

V&V Reference Report

L2 ASCDS Version : 8.4.4

Observation 8094 - L2 Version 2
Chandra X-Ray Center

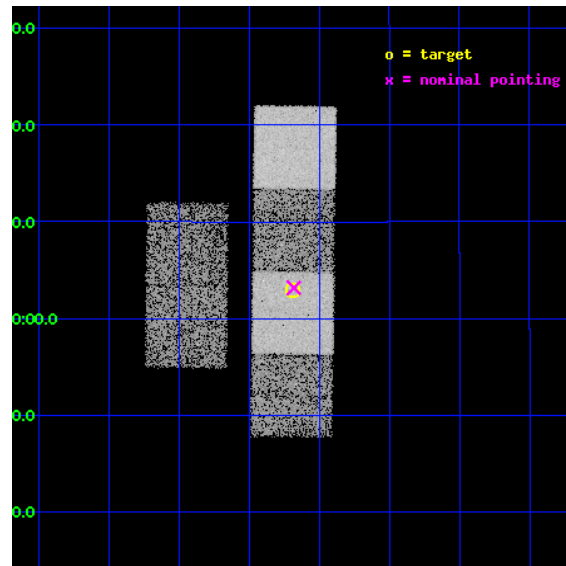
L2 Processing Date : May 10 2012

Contents

1	Front	2
2	OBI	3
2.1	OBI	3
2.1.1	Images	3
2.1.2	Bias	3
2.1.3	Parameters	4
2.1.4	Events	4
2.2	Compared Parameters	5
2.3	Aspect	6
2.4	Star Slots	9
2.4.1	Slot 3	9
2.4.2	Slot 4	10
2.4.3	Slot 5	11
2.4.4	Slot 6	12
2.4.5	Slot 7	13
2.5	FID Slots	14
2.5.1	Slot 0	14
2.5.2	Slot 1	15
2.5.3	Slot 2	16
A	Summary	17
A.1	Status	17
A.2	Comments	17

1 Front

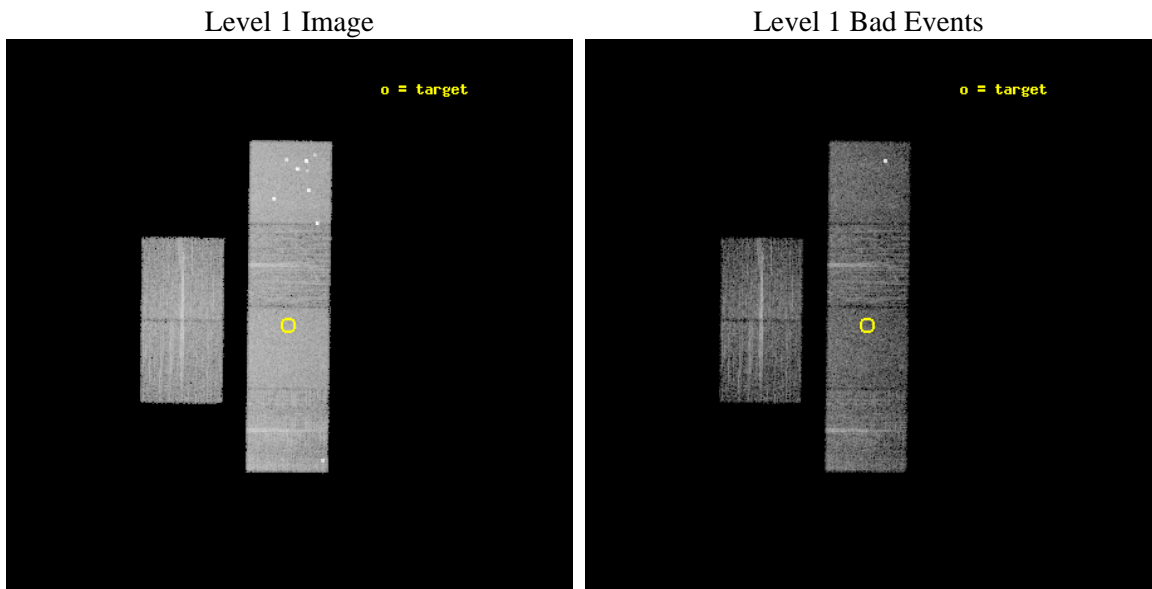
seq_num	900635	Sequence number
obs_id	8094	Observation id
title	The Duty Cycle of Supermassive Black Holes: X-raying Virgo	Proposa
observer	Prof Tommaso Treu	Principal investigator
object	1545	Source name
dtcycle	0	
cycle	P	events from which exps? Prim/Second/Both
ra_targ	188.547917	Observer's specified target RA [deg]
dec_targ	12.048861	Observer's specified target Dec [deg]
ra_nom	188.54525185023	Nominal RA [deg]
dec_nom	12.0529538673	Nominal Dec [deg]
roll_nom	90.688212509297	Nominal Roll [deg]
revision	2	Processing version of data
ontime	5158.3292691112	Sum of GTIs [s]
livetime	5093.0113979327	Livetime [s]
ontime2	5158.3703091145	Sum of GTIs [s]
ontime3	5158.2061491013	Sum of GTIs [s]
ontime5	5158.2882291079	Sum of GTIs [s]
ontime6	5158.2471891046	Sum of GTIs [s]
ontime7	5158.3292691112	Sum of GTIs [s]
ontime8	5151.6830485463	Sum of GTIs [s]
l2events	86514	Number of level 2 events



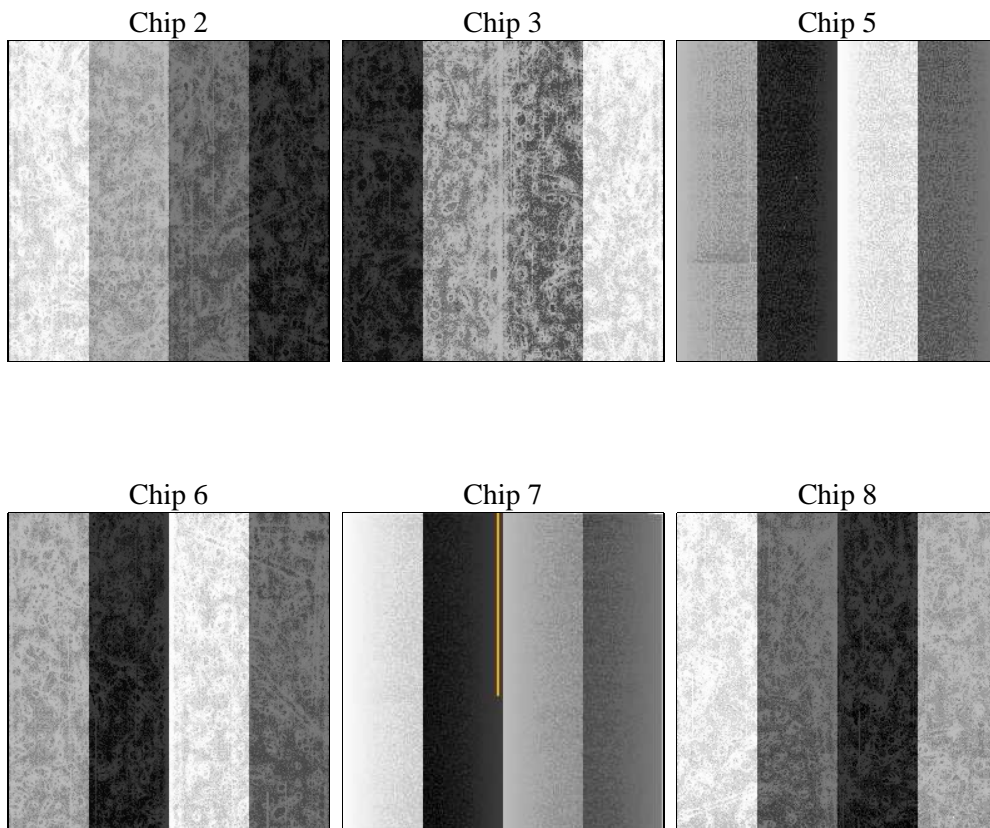
2 OBI

2.1 OBI

2.1.1 Images



2.1.2 Bias



2.1.3 Parameters

obi_num	1	Obi number	sched_exp_time	5400.000000	[s] Scheduled observation exposure time
ascdsver	8.4.4	Processing system revision	ontime	5158.3292691112	Sum of GTIs [s]
caldbver	4.4.9	 	ontime2	5158.3703091145	Sum of GTIs [s]
date	2012-05-10T08:36:01	Date and time of file creation	ontime3	5158.2061491013	Sum of GTIs [s]
revision	2	Processing version of data	ontime5	5158.2882291079	Sum of GTIs [s]
			ontime6	5158.2471891046	Sum of GTIs [s]
			ontime7	5158.3292691112	Sum of GTIs [s]
			ontime8	5151.6830485463	Sum of GTIs [s]
			l1events	379851	Number of level 1 events

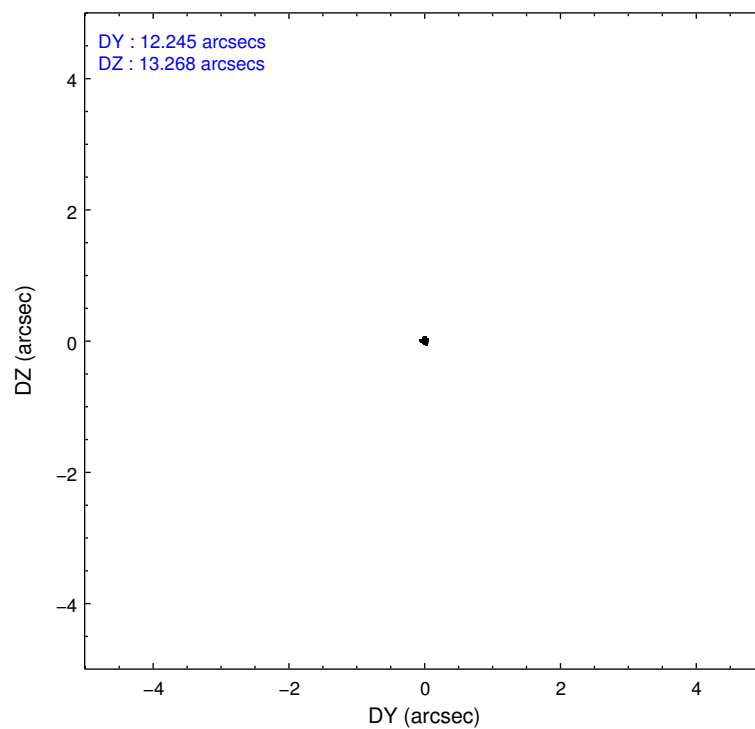
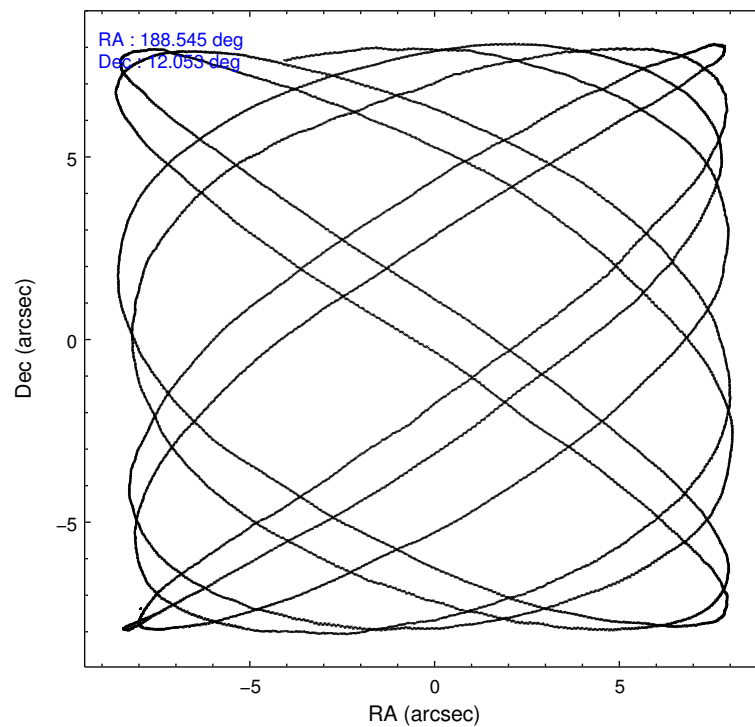
2.1.4 Events

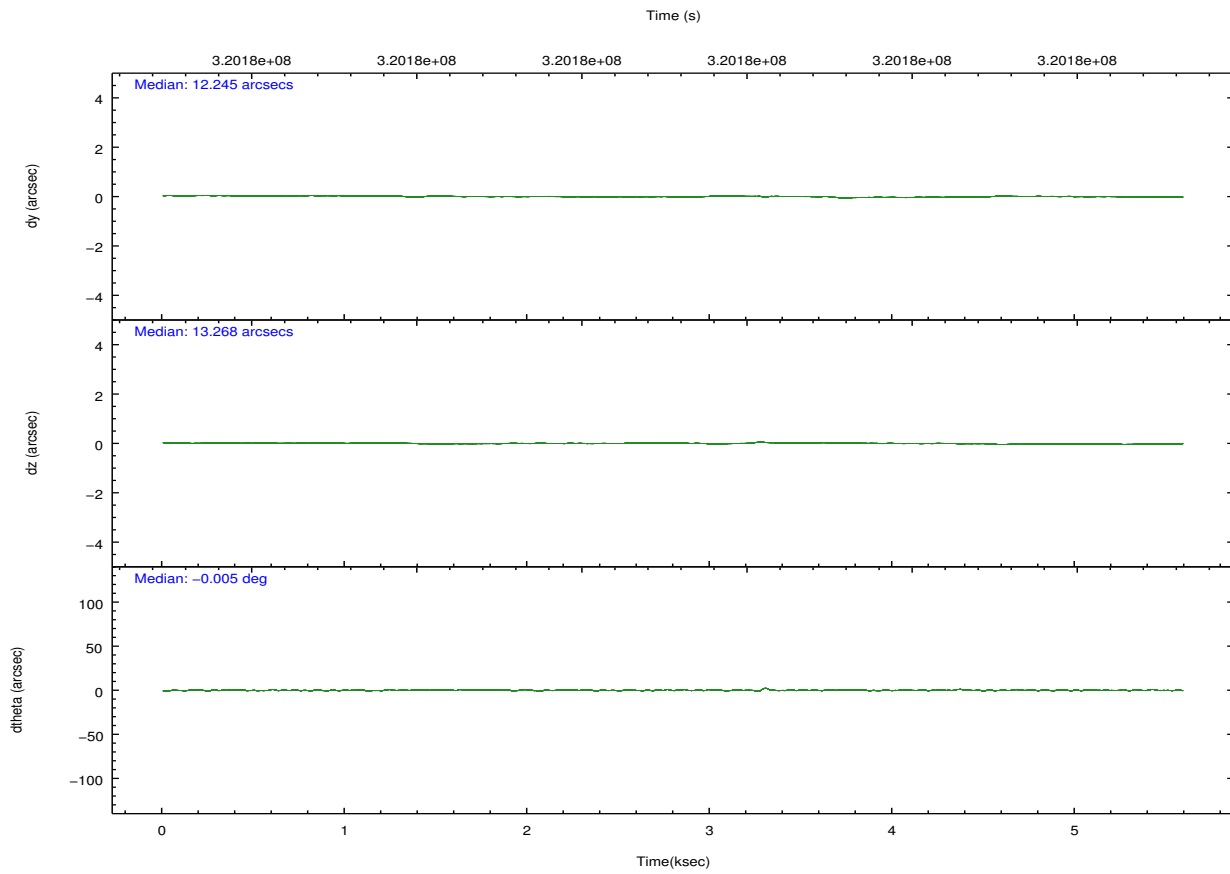
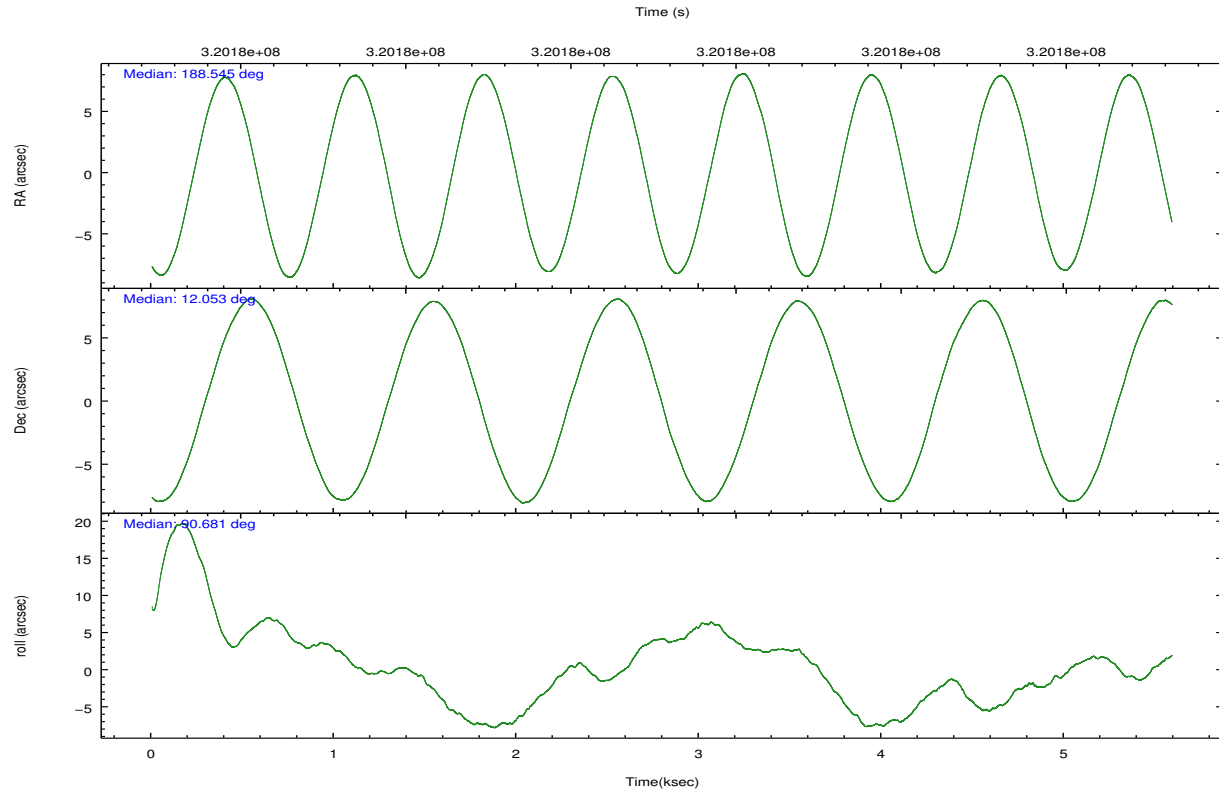
	ccd 2	ccd 3	ccd 5	ccd 6	ccd 7	ccd 8		ccd 2	ccd 3	ccd 5	ccd 6	ccd 7	ccd 8
level 1 events	52530	49473	86284	54048	70152	67364	grade 0 events	2731	2877	7583	3167	2811	5956
rejected events	46545	43211	43719	46875	40372	51426		5%	5%	8%	5%	4%	8%
rejected %	88%	87%	50%	86%	57%	76%	grade 1 events	44	34	123	34	81	81
								0%	0%	0%	0%	0%	0%
							grade 2 events	1232	1189	11890	1497	6063	3271
								2%	2%	13%	2%	8%	4%
							grade 3 events	570	563	1470	599	2506	1658
								1%	1%	1%	1%	3%	2%
							grade 4 events	507	567	1228	593	2475	1496
								0%	1%	1%	1%	3%	2%
							grade 5 events	2018	2245	5253	2373	6365	3088
								3%	4%	6%	4%	9%	4%
							grade 6 events	949	1070	20417	1321	15952	3581
								1%	2%	23%	2%	22%	5%
							grade 7 events	44479	40928	38320	44464	33899	48233
								84%	82%	44%	82%	48%	71%

2.2 Compared Parameters

Parameter	Planned	Actual	Parameter	Planned	Actual
Instrument	ACIS	ACIS	Obspar format version number	7	7
Detector	ACIS-235678	ACIS-235678	Obspar file type	PREDICTED	ACTUAL
Grating	NONE	NONE	Obspar update status	NONE	UPDATED
Data mode	FAINT	FAINT	CCD I0 on	N	N
Observation mode	POINTING	POINTING	CCD I1 on	N	N
[deg] Pointing RA	188.559860	188.5452518502298	CCD I2 on	O1	Y
[deg] Pointing Dec	12.029639	12.05295386729979	CCD I3 on	O2	Y
[deg] Pointing Roll	90.528545	90.68821250929719	CCD S0 on	N	N
[mm] SIM focus pos	-0.684267	-0.6828225247311905	CCD S1 on	O3	Y
[mm] SIM defocus	0	0.001444936568705701	CCD S2 on	Y	Y
[mm] SIM translation stage pos	-190.132523	-190.1400660498719	CCD S3 on	Y	Y
[mm] SIM translation stage offset	0	0.00754346686406393	CCD S4 on	O4	Y
[s] Observation start time (MET)	320178947.184000	320178547.75317	CCD S5 on	N	N
Observation start date	2008-02-23T18:34:42	2008-02-23T18:29:07	Number of optional ACIS chips dropped	0	0
[s] Observation end time (MET)	320184347.184000	320184645.47846	On-chip summing requested	N	N
Observation end date	2008-02-23T20:04:42	2008-02-23T20:10:45	Subarray requested	NONE	NONE
Read mode	TIMED	TIMED	Alternating exposures requested	N	N
			[s] Primary exposure time	0.000000	3.2

2.3 Aspect



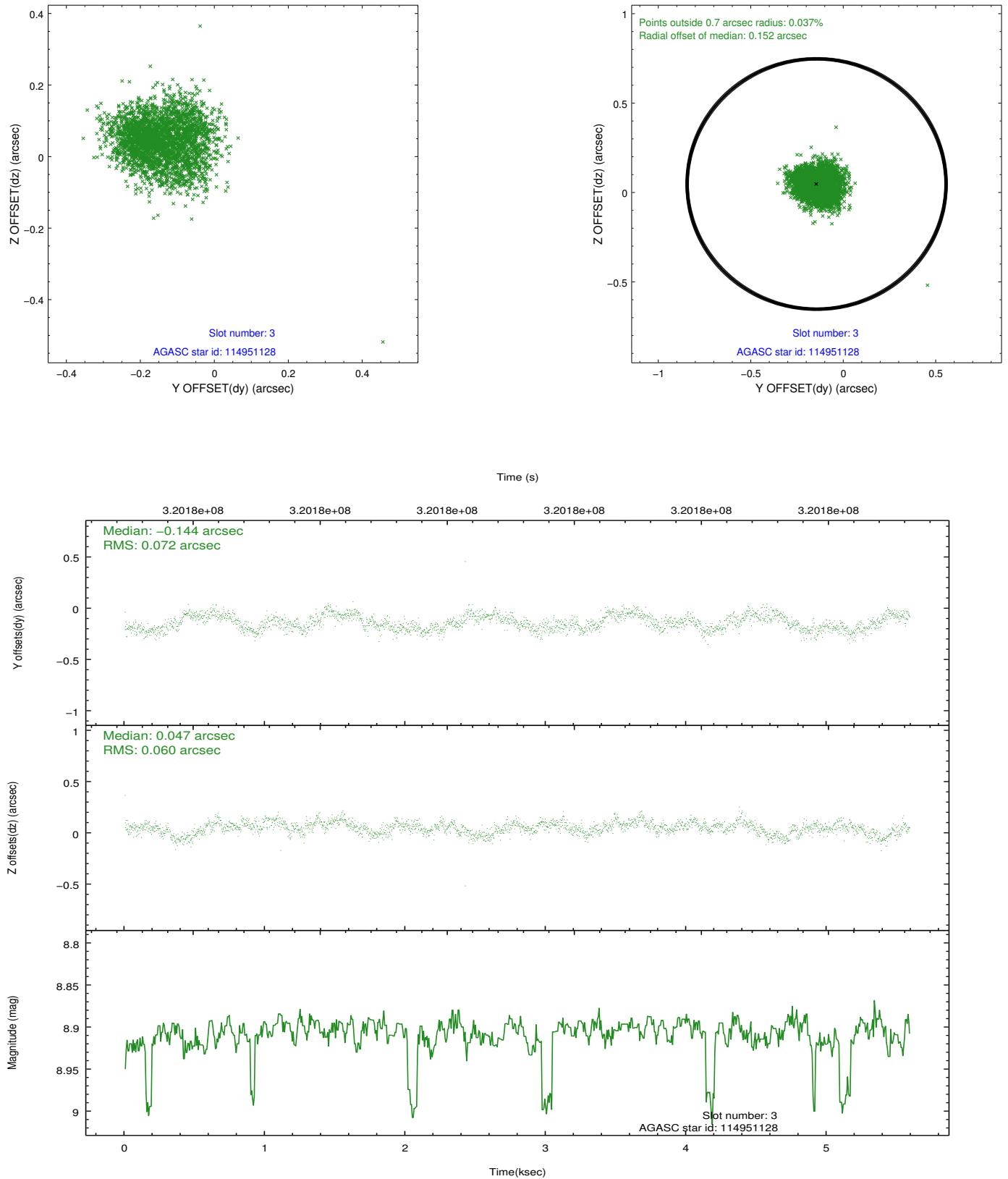


Slot Statistics

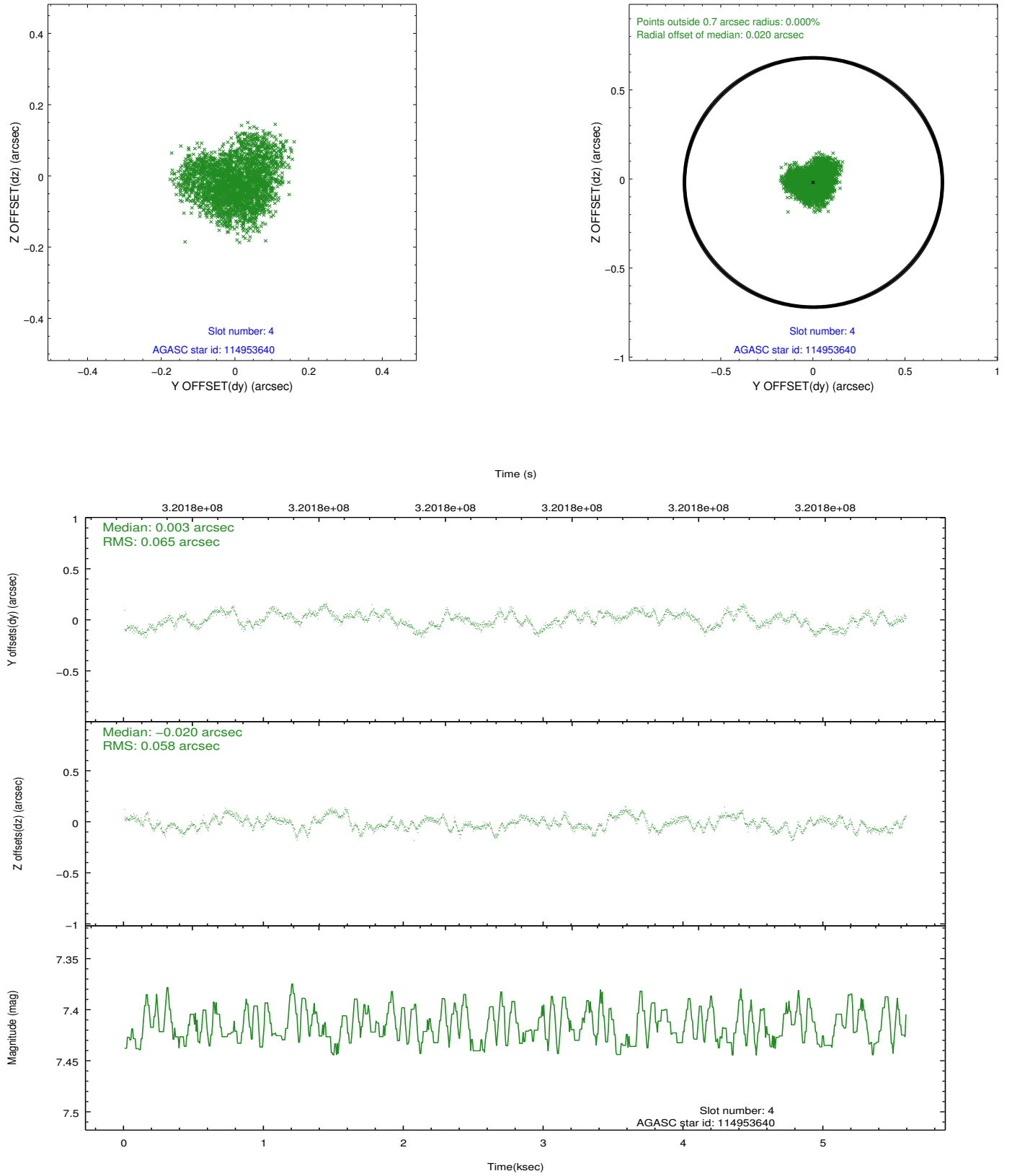
slot	status	id	mag	n_pts	med_dy	med_dz	dr1	dr2	ra	dec	mean_y	mean_z
0	FID	ACIS-S-1	7.20	1363	0.071	-0.034	0.007	0.012	0.000000	0.000000	930.94	-1730.27
1	FID	ACIS-S-4	7.20	1363	0.077	-0.006	0.006	0.011	0.000000	0.000000	2148.97	172.79
2	FID	ACIS-S-5	7.24	1363	-0.175	0.053	0.006	0.011	0.000000	0.000000	-1816.78	167.70
3	GUIDE	114951128	8.91	2702	-0.144	0.047	0.100	0.153	188.719863	12.459246	1541.15	-576.51
4	GUIDE	114953640	7.42	2727	0.003	-0.020	0.096	0.143	188.794711	11.547726	-1741.15	-812.55
5	GUIDE	114955056	8.33	2727	-0.107	0.024	0.099	0.159	187.914001	12.127854	376.56	2269.71
6	GUIDE	115085768	9.94	2725	0.189	0.235	0.153	0.256	189.167689	11.938344	-345.11	-2136.62
7	GUIDE	115350352	10.35	2723	0.069	-0.273	0.238	0.383	188.532519	12.585067	2000.63	76.92

2.4 Star Slots

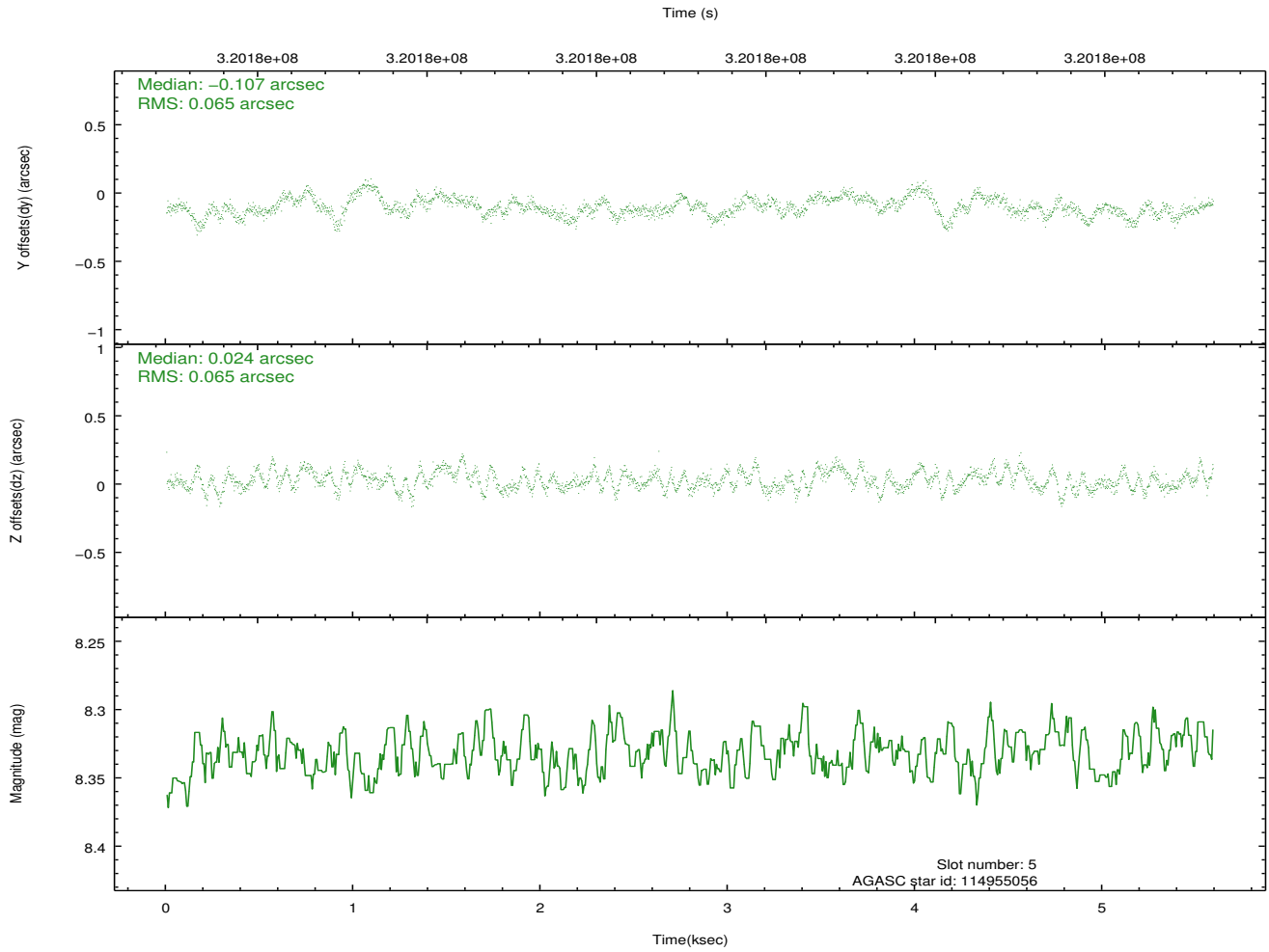
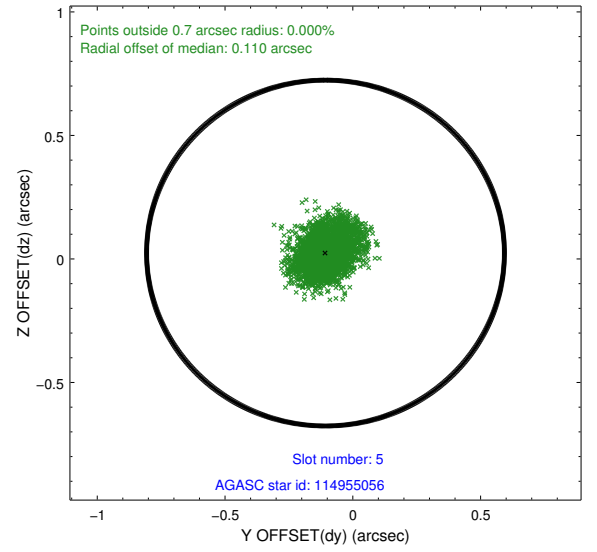
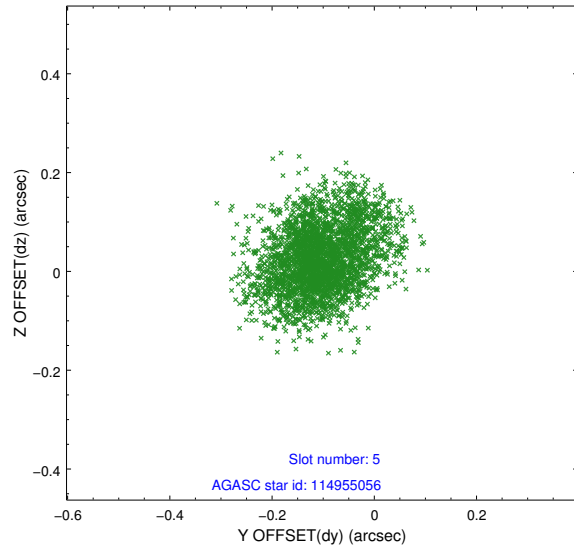
2.4.1 Slot 3



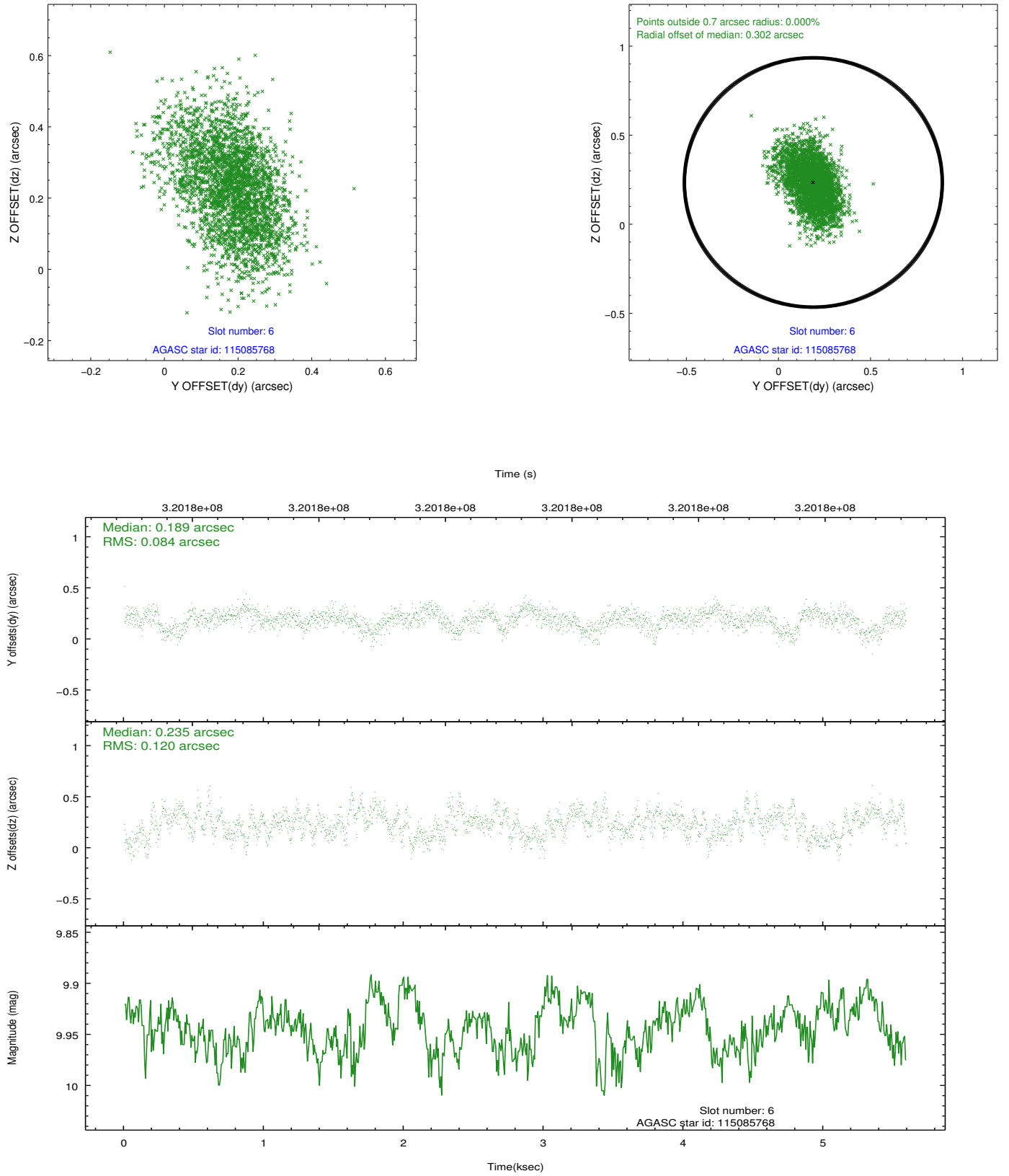
2.4.2 Slot 4



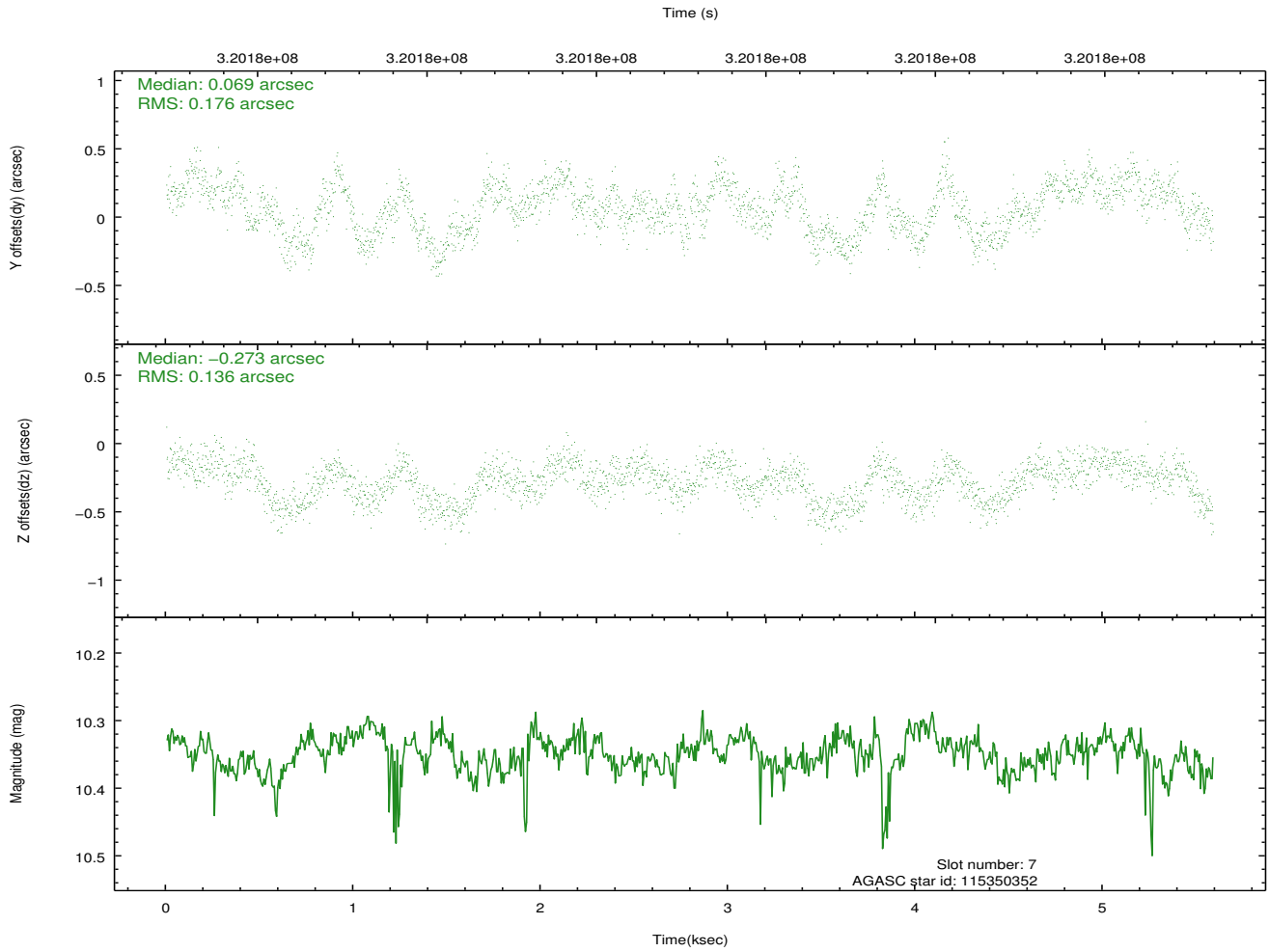
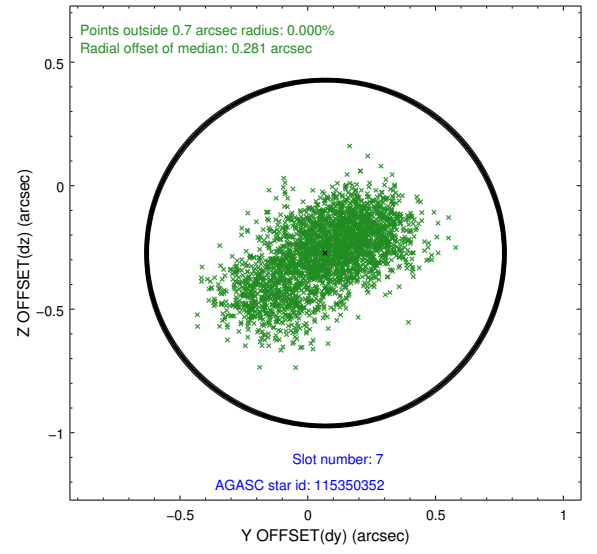
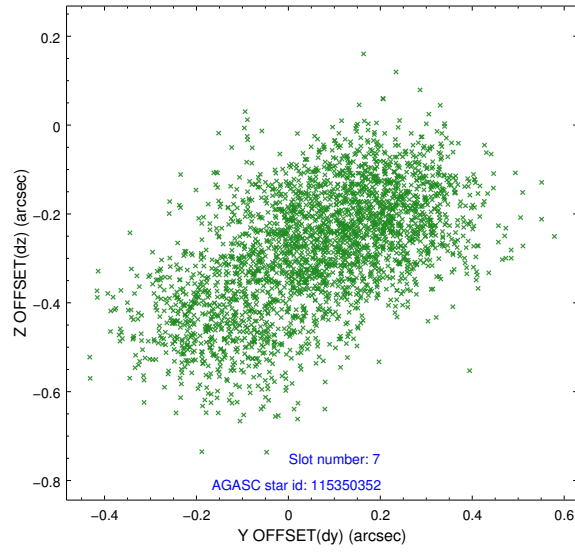
2.4.3 Slot 5



2.4.4 Slot 6

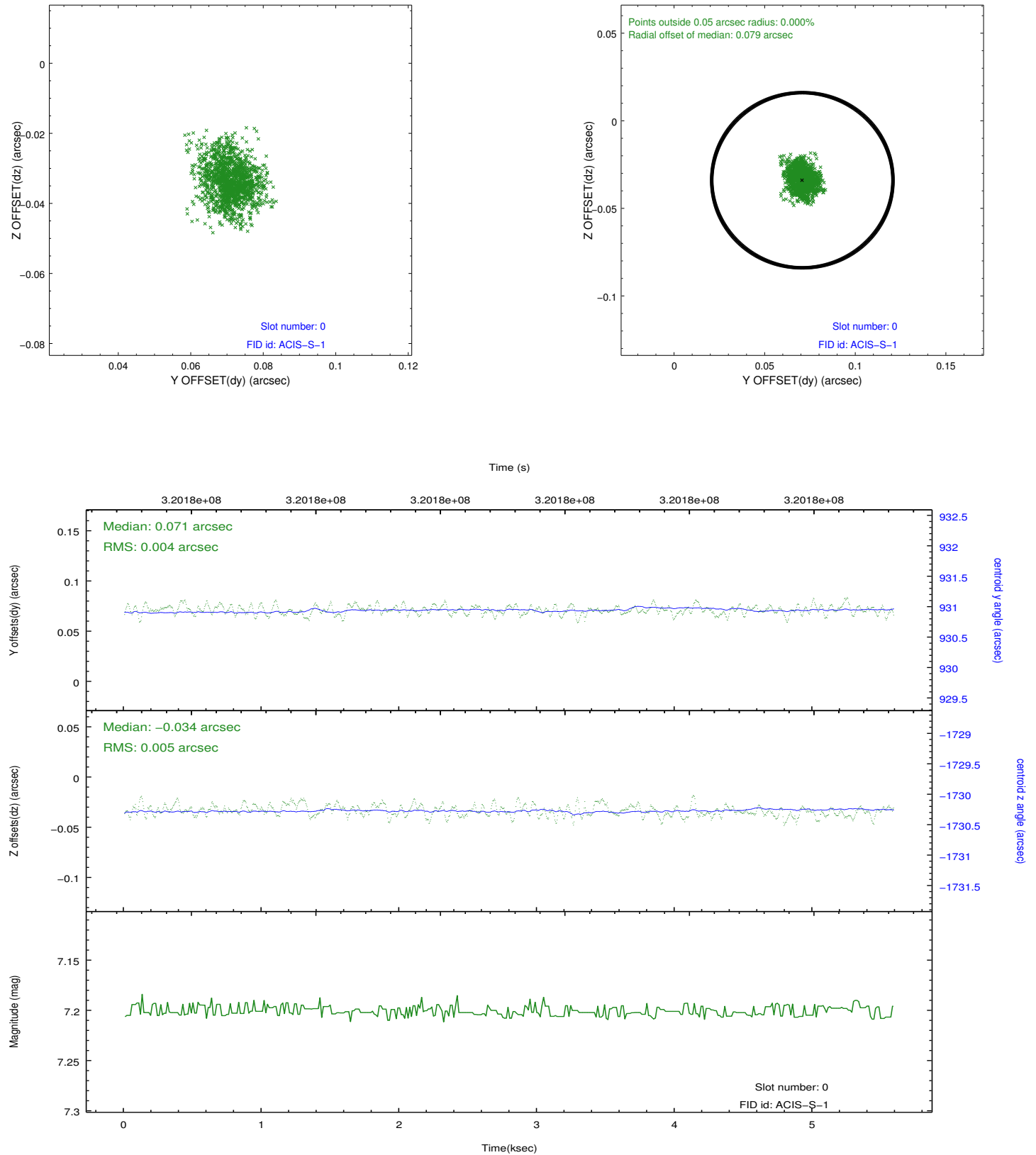


2.4.5 Slot 7

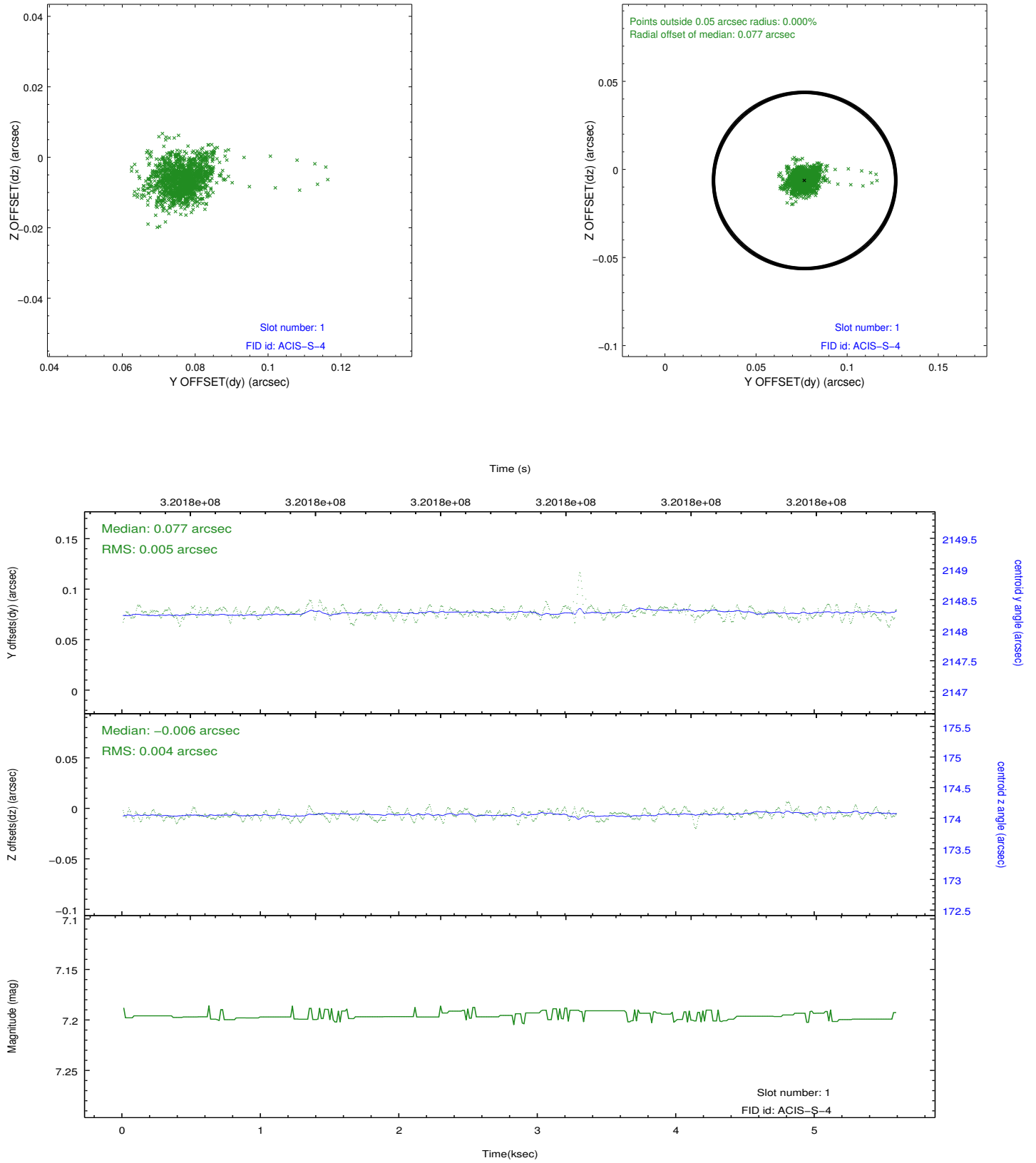


2.5 FID Slots

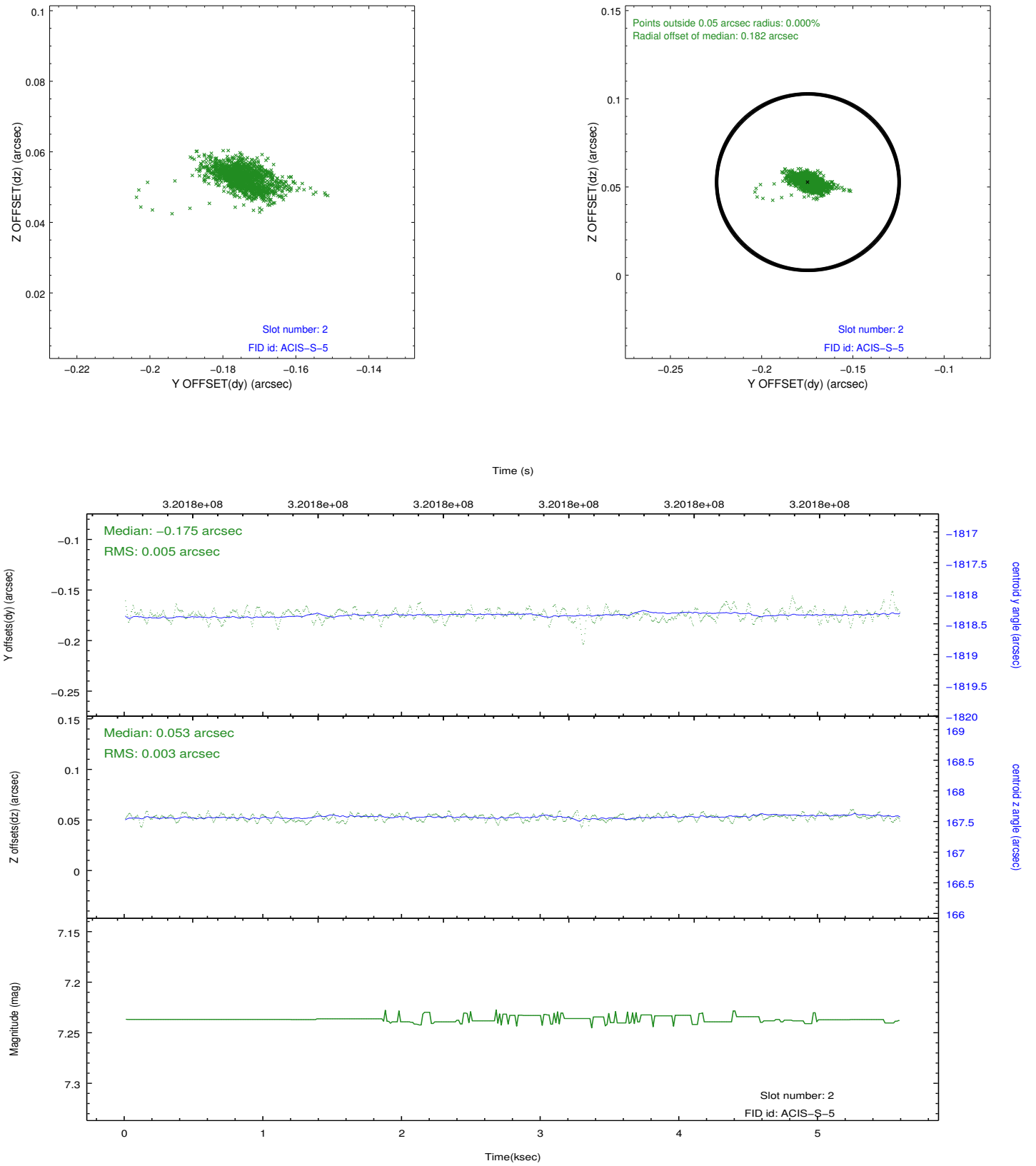
2.5.1 Slot 0



2.5.2 Slot 1



2.5.3 Slot 2



A Summary

A.1 Status

V&V Scientist	Jen Lauer
V&V Date (YYYY-MM-DD)	2012.05.13
V&V Edition	1
V&V Disposition and Status	OK
V&V Charge Time	5.15839998

A.2 Comments

Joint Proposal: Spitzer