

V&V Reference Report

L2 ASCDS Version : 7.6.10

Observation 794 - L2 Version 001
Chandra X-Ray Center

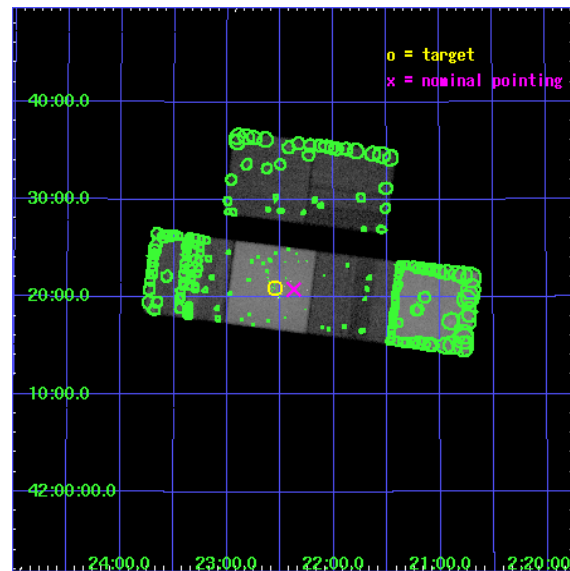
L2 Processing Date : Jun 14 2007

Contents

1	Front	2
2	OBI	3
2.1	OBI	3
2.1.1	Images	3
2.1.2	Bias	3
2.1.3	Parameters	4
2.1.4	Events	4
2.2	Compared Parameters	5
2.3	Aspect	6
2.4	Star Slots	9
2.4.1	Slot 3	9
2.4.2	Slot 4	10
2.4.3	Slot 5	11
2.4.4	Slot 6	12
2.4.5	Slot 7	13
2.5	FID Slots	14
2.5.1	Slot 0	14
2.5.2	Slot 1	15
2.5.3	Slot 2	16
3	Point Sources	17
A	Summary	18
A.1	Status	18
A.2	Comments	18

1 Front

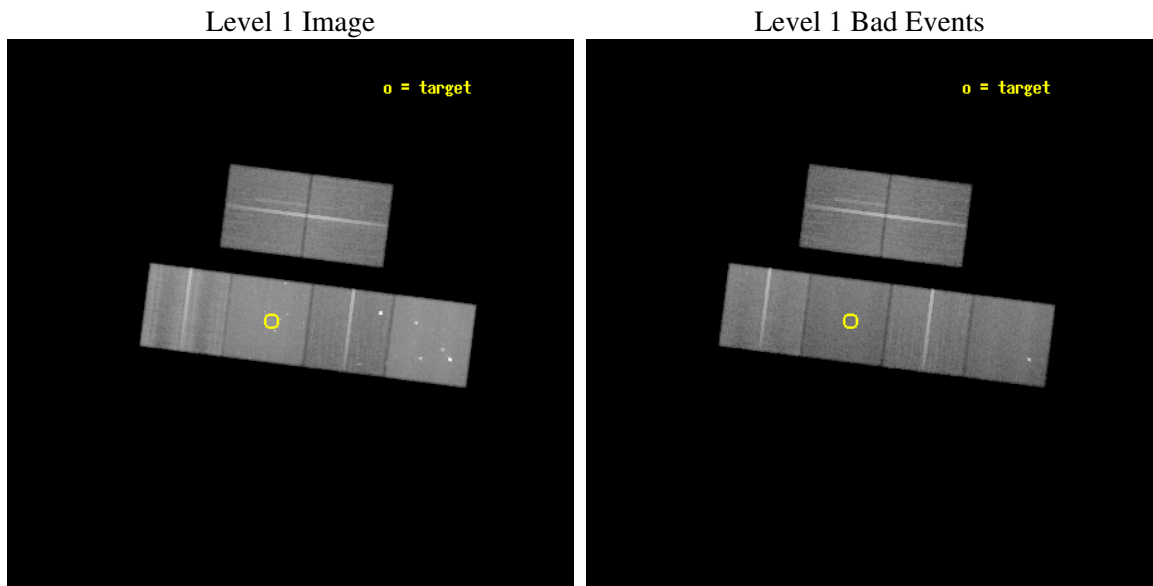
seq_num	600097
obs_id	794
title	GALACTIC FOUNTAINS AND SUPERNOVAE IN NGC 891
observer	Dr. Joel Bregman
object	NGC 891
dtcycle	0
cycle	P
ra_targ	35.639167
dec_targ	42.349167
ra_nom	35.593603064715
dec_nom	42.346791832474
roll_nom	187.18732330302
revision	2
ontime	51555.159077778
livetime	50902.336610746
ontime2	51542.195146903
ontime3	51555.15906778
ontime5	51555.159097686
ontime6	51551.918067619
ontime7	51555.159077778
ontime8	51558.400048018
l2events	655050



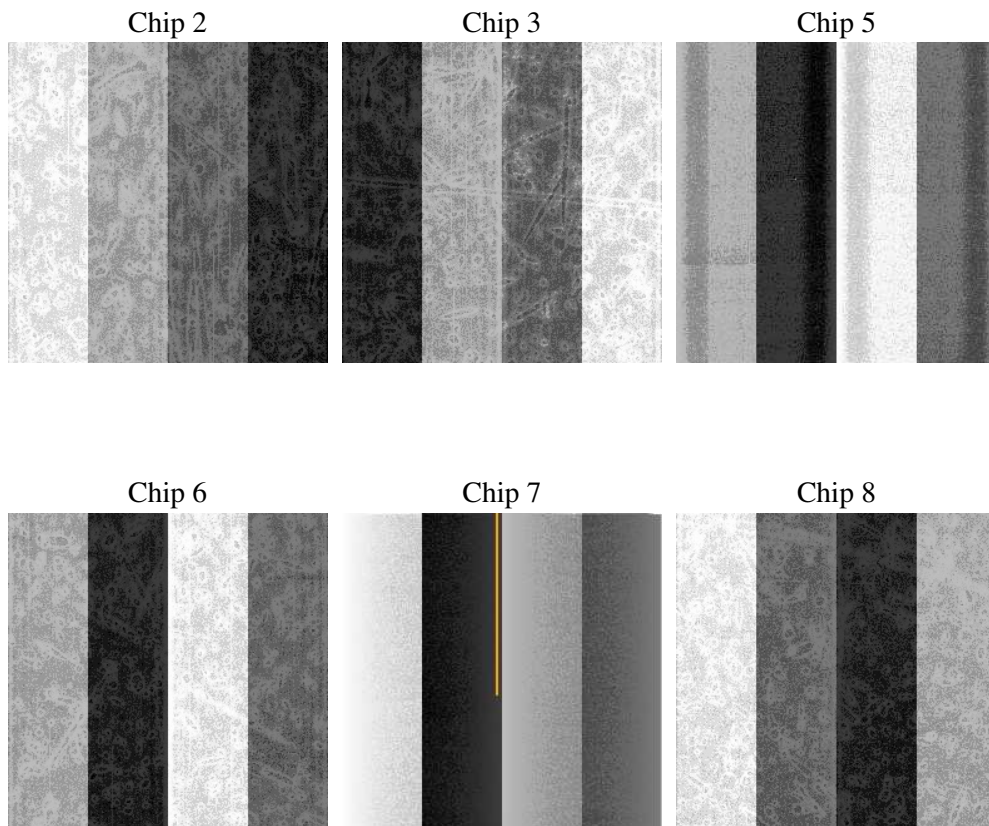
2 OBI

2.1 OBI

2.1.1 Images



2.1.2 Bias



2.1.3 Parameters

obi_num	0
ascsver	7.6.10
caldsver	3.4.0
date	2007-06-14T11:35:53
revision	2

sched_exp_time	51607.464000
ontime	51555.159077778
ontime2	51542.195146903
ontime3	51555.15906778
ontime5	51555.159097686
ontime6	51551.918067619
ontime7	51555.159077778
ontime8	51558.400048018
l1events	2433990

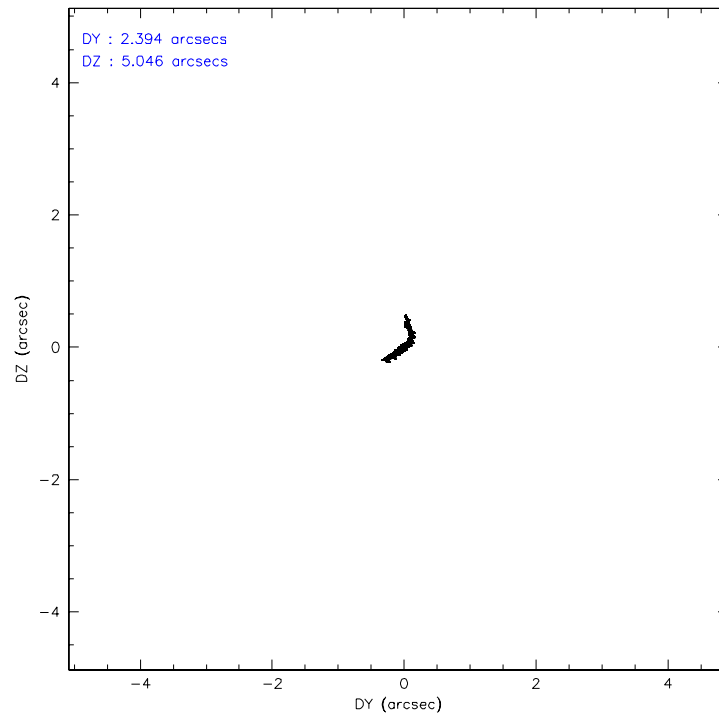
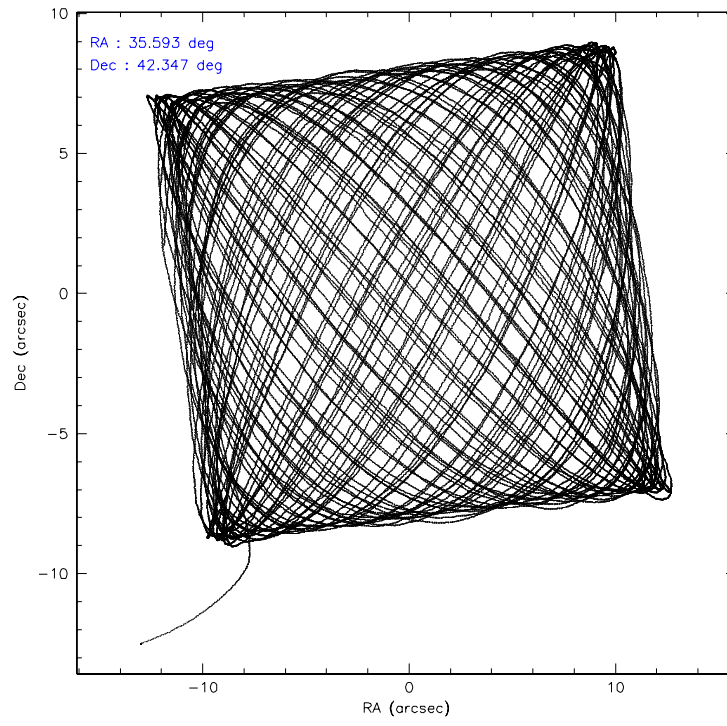
2.1.4 Events

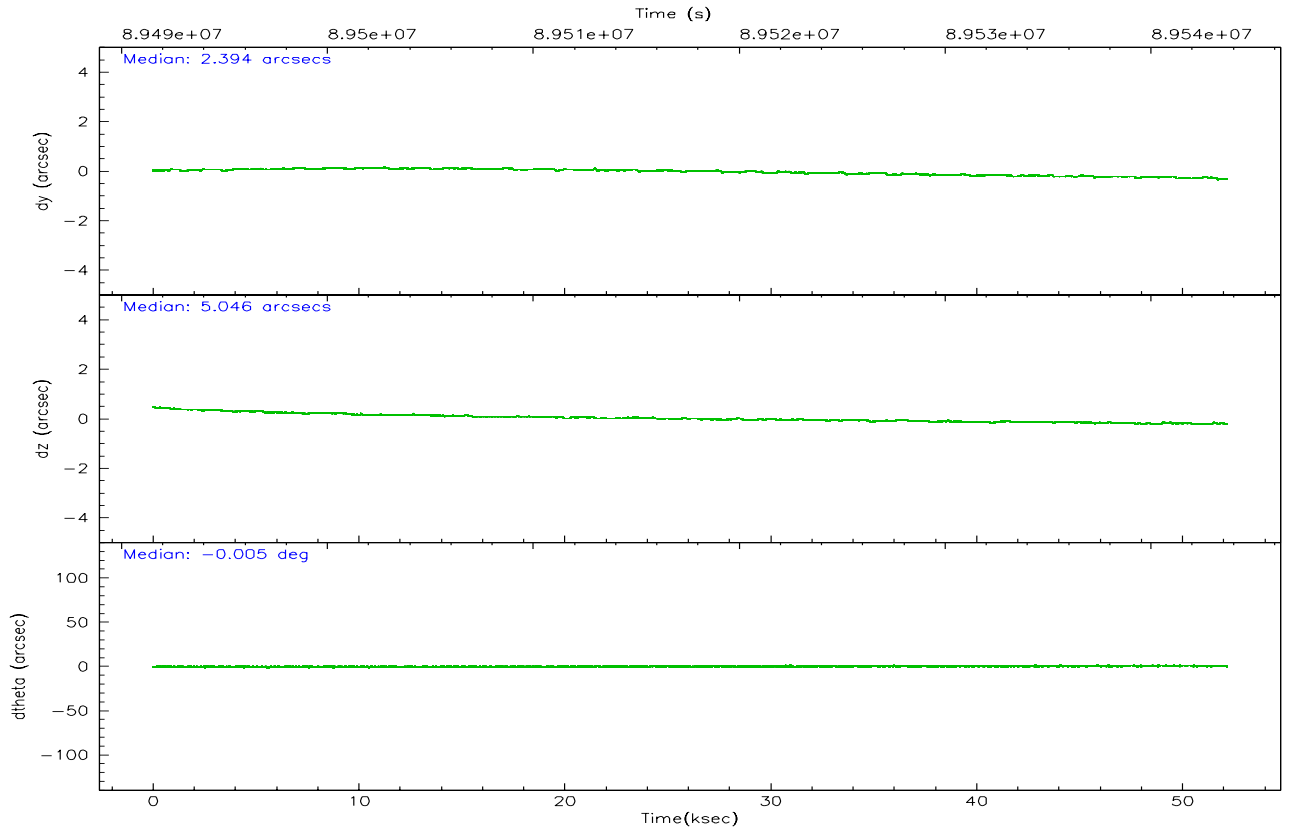
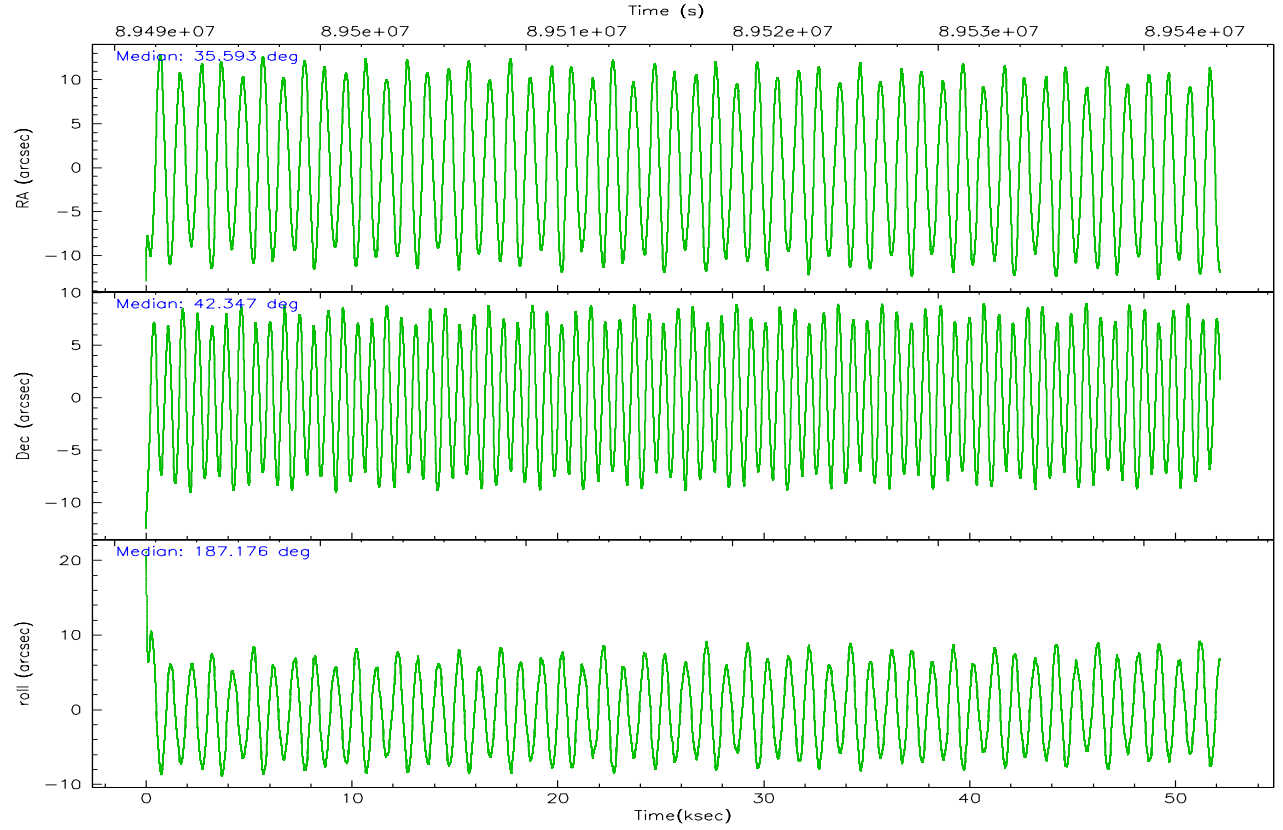
	ccd 2	ccd 3	ccd 5	ccd 6	ccd 7	ccd 8		ccd 2	ccd 3	ccd 5	ccd 6	ccd 7	ccd 8
level 1 events	335487	319584	498175	349269	455781	475694	grade 0 events	19881	19964	42359	35278	28463	56682
rejected events	289320	272616	236181	285817	223734	318682		5%	6%	8%	10%	6%	11%
rejected %	86%	85%	47%	81%	49%	66%	grade 1 events	169	169	3458	205	419	433
								0%	0%	0%	0%	0%	0%
							grade 2 events	11061	11625	74270	11664	46694	26445
								3%	3%	14%	3%	10%	5%
							grade 3 events	3235	3415	13480	3667	21055	23197
								0%	1%	2%	1%	4%	4%
							grade 4 events	3671	3583	13195	3829	20834	20563
								1%	1%	2%	1%	4%	4%
							grade 5 events	10434	11200	33462	12525	36971	16557
								3%	3%	6%	3%	8%	3%
							grade 6 events	8327	8387	118732	9031	115034	30167
								2%	2%	23%	2%	25%	6%
							grade 7 events	278709	261241	199219	273070	186311	301650
								83%	81%	39%	78%	40%	63%

2.2 Compared Parameters

Parameter	Planned	Actual	Parameter	Planned	Actual
Instrument	ACIS	ACIS	Obspar format version number	6	6
Detector	ACIS-235678	ACIS-235678	Obspar file type	PREDICTED	ACTUAL
Grating	NONE	NONE	Obspar update status	NONE	UPDATED
Data mode	VFAINT	VFAINT	Number of optional ACIS chips dropped	0	0
Observation mode	POINTING	POINTING	On-chip summing requested	N	N
Pointing RA	35.622930	35.59360306471461	Subarray requested	NONE	NONE
Pointing Dec	42.363485	42.34679183247398	Alternating exposures requested	N	N
Pointing Roll	187.010938	187.1873233030156	Primary exposure time	3.200000	3.2
SIM focus pos (mm)	-0.684267	-0.6828225247311905			
SIM defocus (mm)	0	0.001444936568705701			
SIM translation stage pos (mm)	-190.132523	-190.1425803651734			
SIM translation stage offset (mm)	0	0.01005778216563158			
Observation start time	89492091.184000	89490940.87776799			
Observation start date	2000-11-01T18:53:47	2000-11-01T18:35:40			
Observation end time	89543698.184000	89544013.329772			
Observation end date	2000-11-02T09:13:54	2000-11-02T09:20:13			
Read mode	TIMED	TIMED			

2.3 Aspect



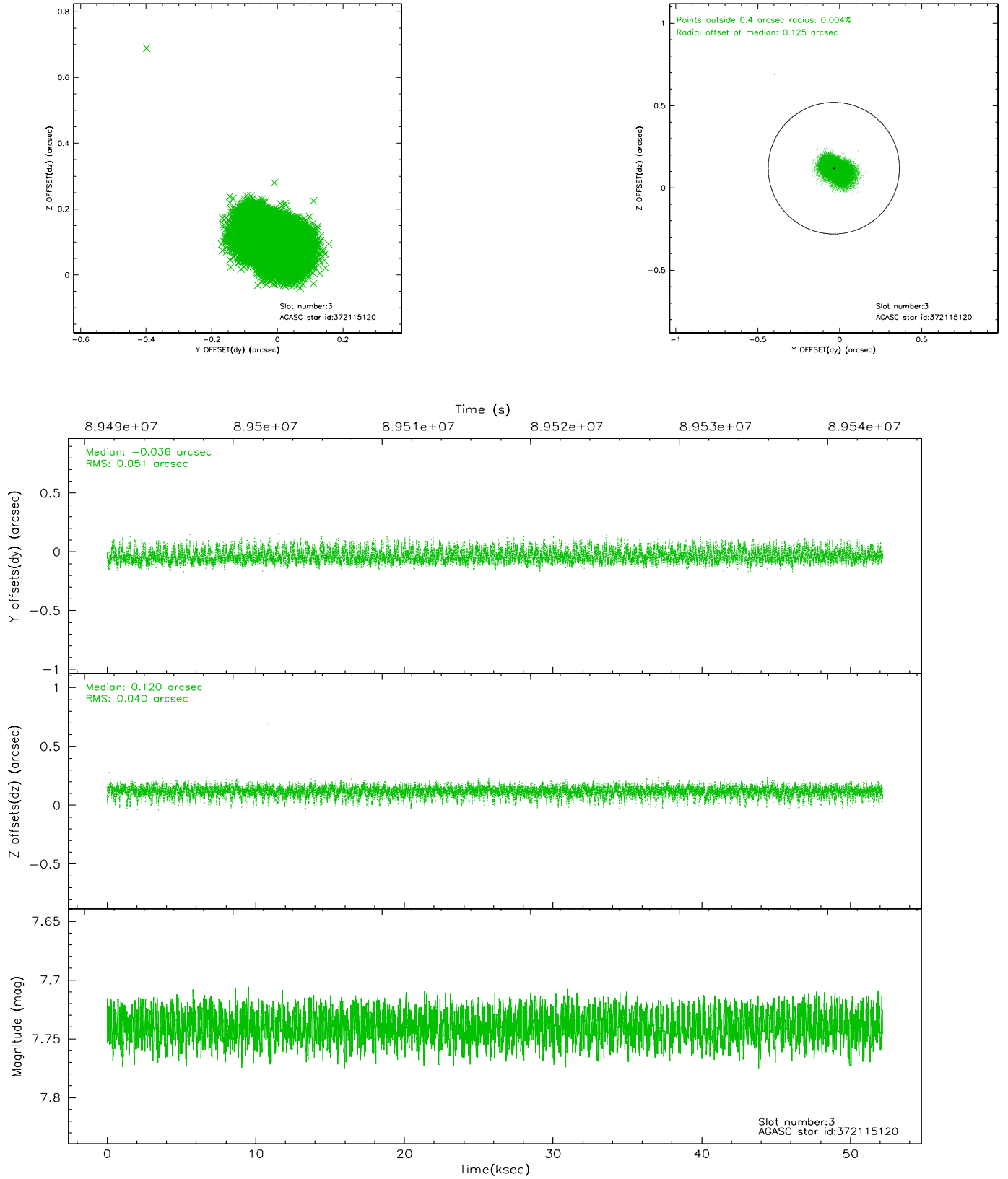


Slot Statistics

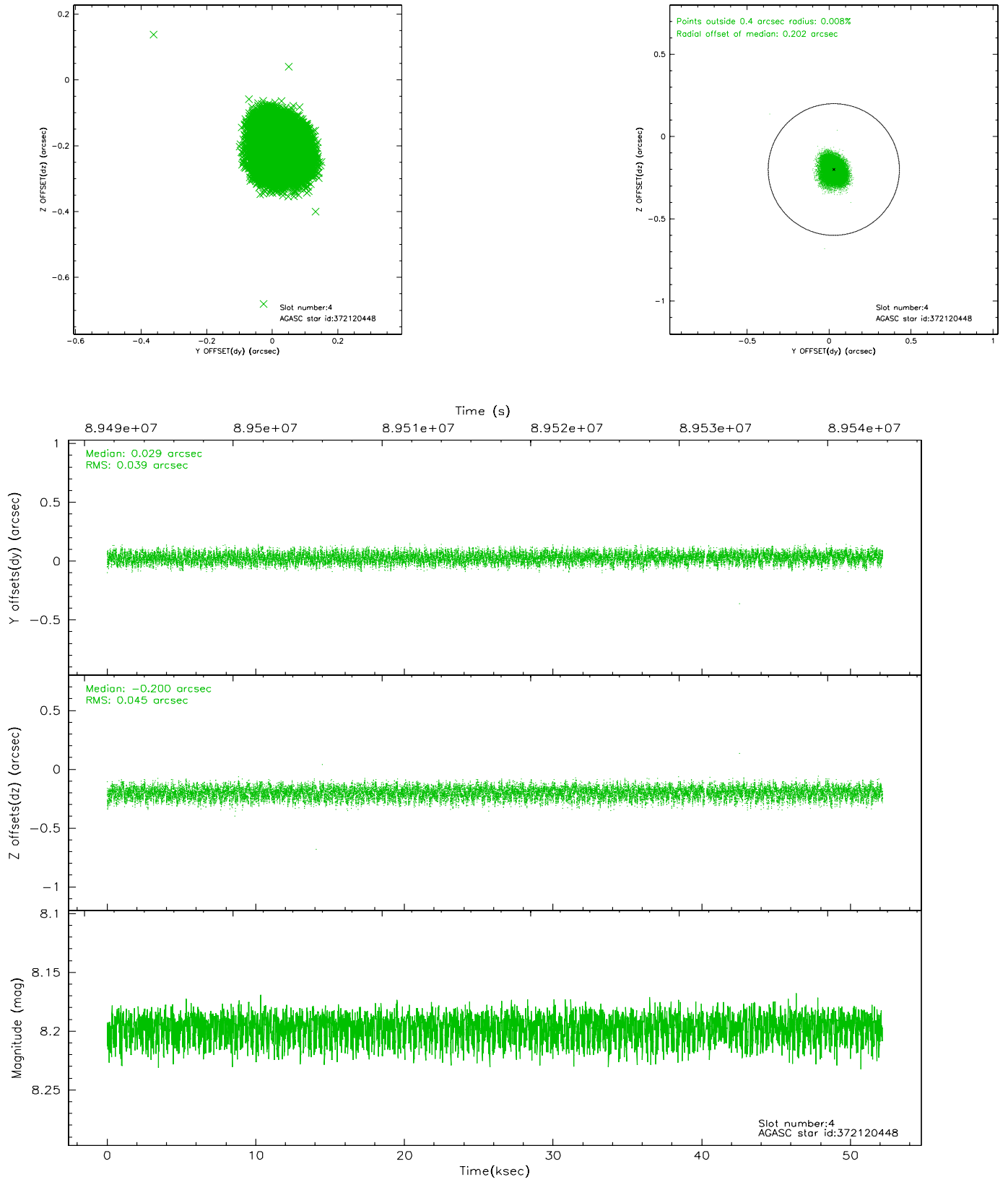
slot	status	id	mag	n_pts	med_dy	med_dz	dr1	dr2	ra	dec	mean_y	mean_z
0	FID	ACIS-S-2	7.11	12724	-0.032	0.011	0.007	0.012	0.000000	0.000000	-754.98	-1726.14
1	FID	ACIS-S-4	7.20	12724	-0.038	0.013	0.006	0.011	0.000000	0.000000	2158.26	182.42
2	FID	ACIS-S-5	7.24	12722	0.040	-0.015	0.006	0.011	0.000000	0.000000	-1807.82	175.96
3	GUIDE	372115120	7.74	25446	-0.036	0.120	0.066	0.115	35.261123	42.943957	691.29	-2191.21
4	GUIDE	372120448	8.20	25382	0.029	-0.200	0.064	0.101	35.866153	41.742261	-376.15	2299.17
5	GUIDE	372125032	8.72	25443	-0.014	0.009	0.063	0.102	35.265346	42.773671	757.53	-1581.52
6	GUIDE	372116224	8.89	25436	0.030	0.108	0.100	0.157	35.797927	43.014954	-743.21	-2271.09
7	GUIDE	372125688	8.90	25440	-0.012	-0.037	0.087	0.135	35.571507	41.884148	346.89	1696.80

2.4 Star Slots

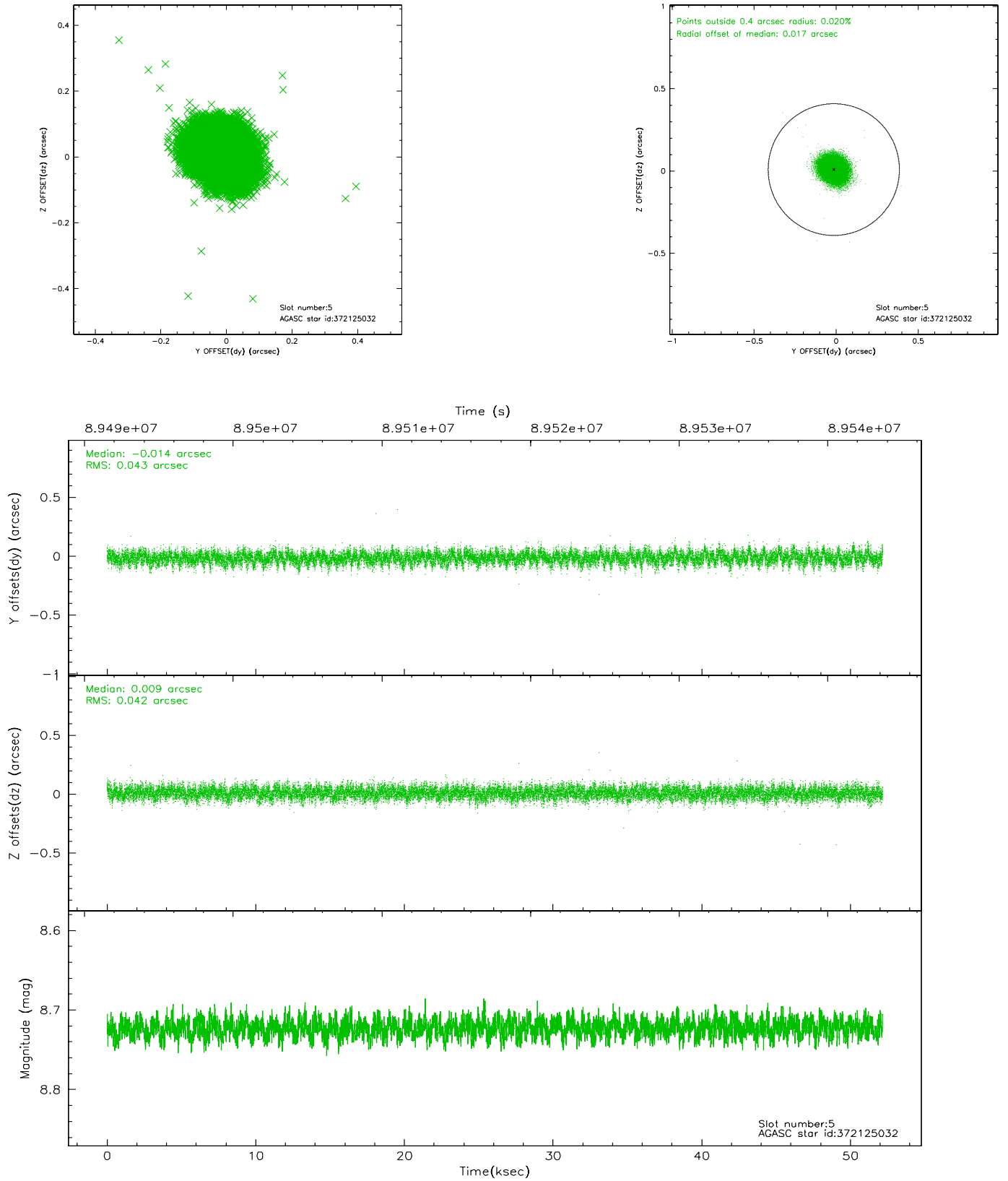
2.4.1 Slot 3



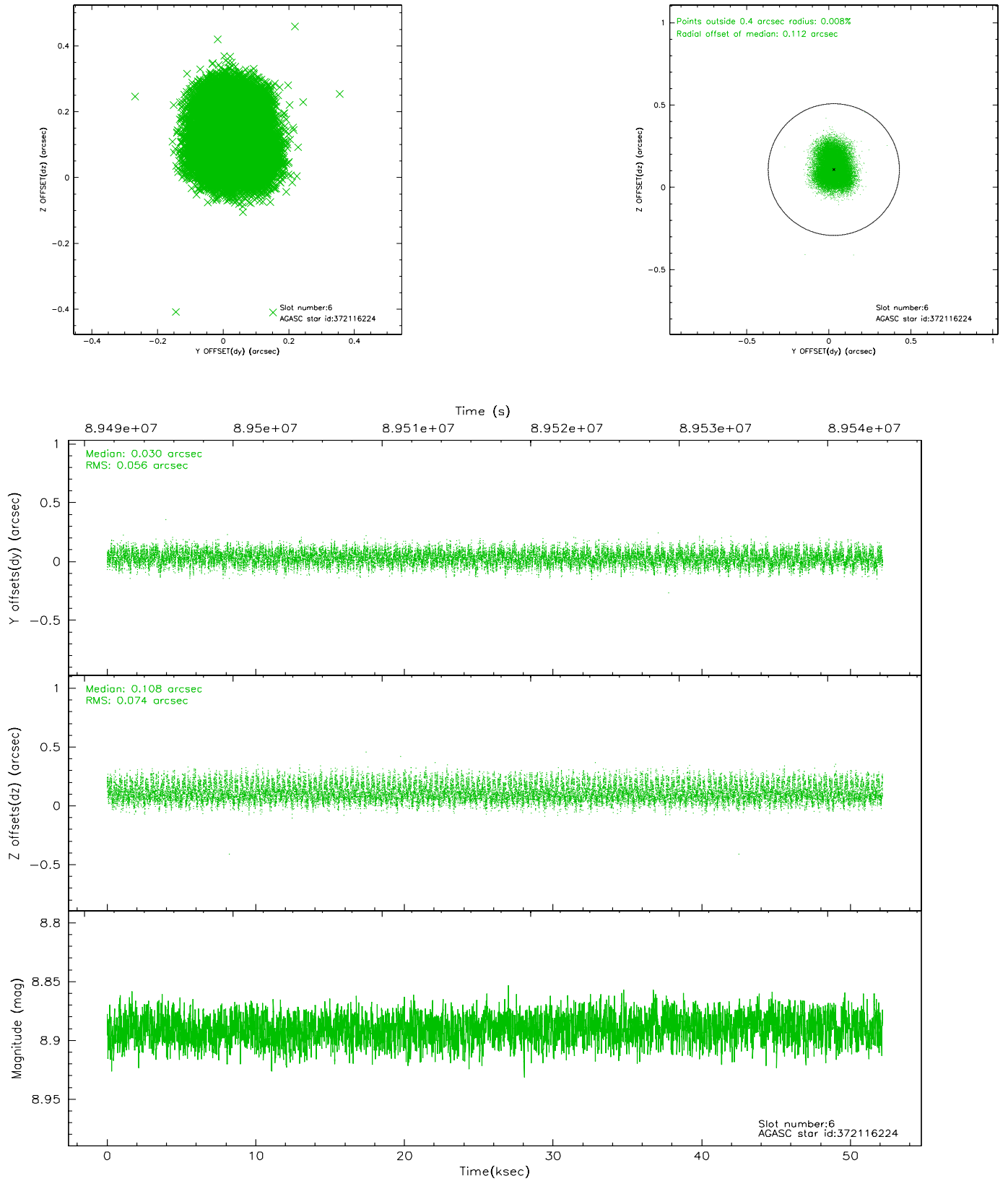
2.4.2 Slot 4



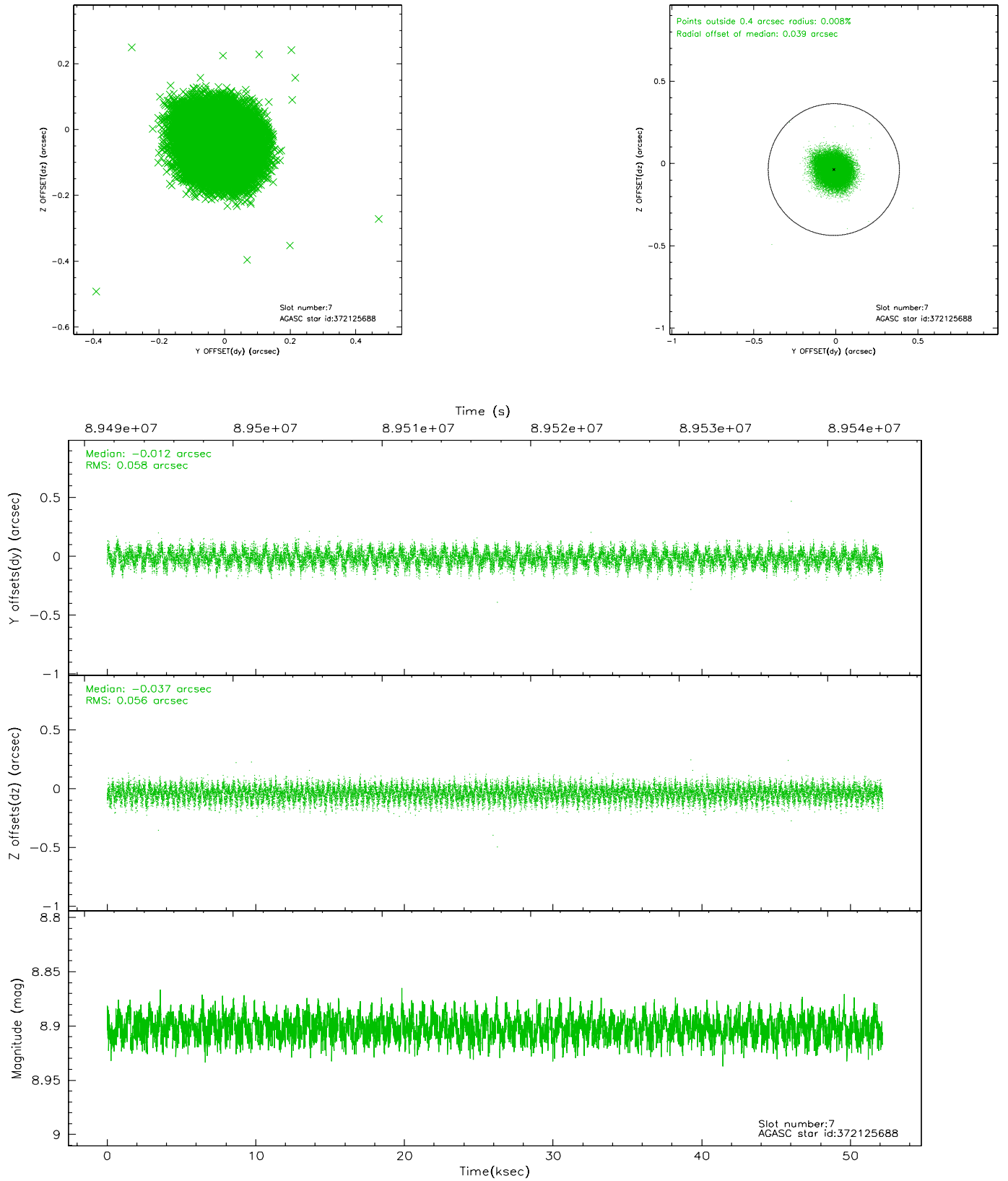
2.4.3 Slot 5



2.4.4 Slot 6

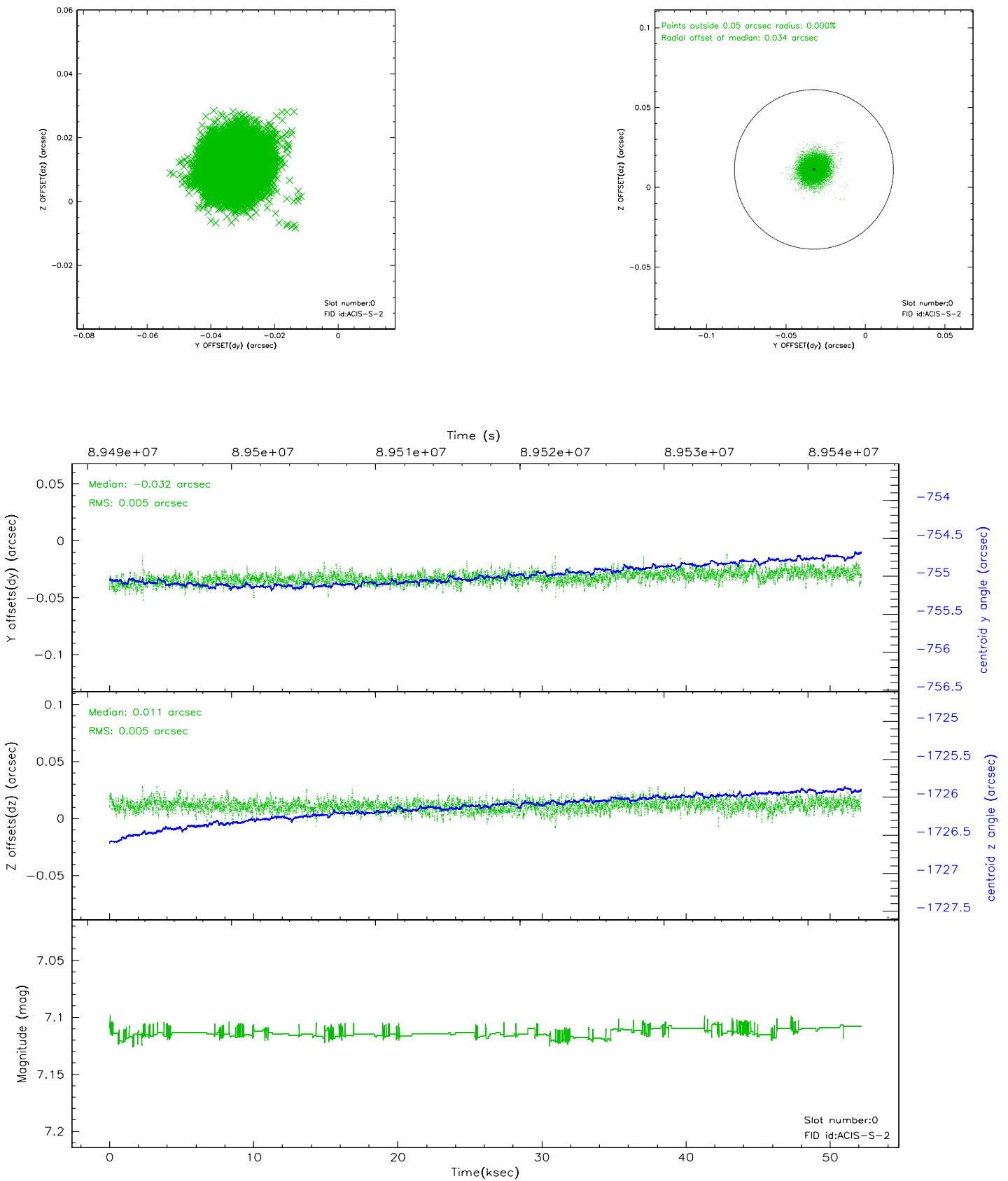


2.4.5 Slot 7

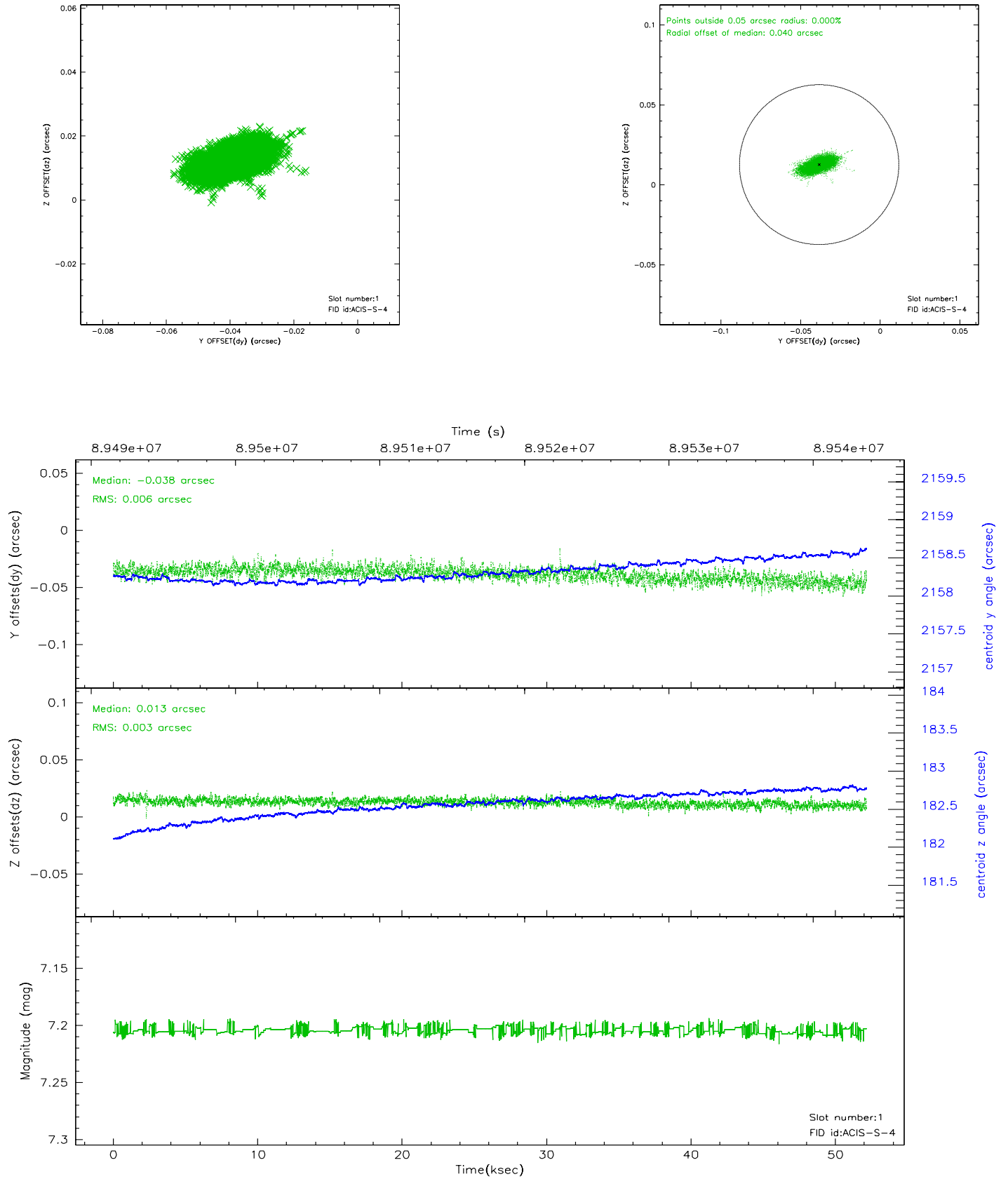


2.5 FID Slots

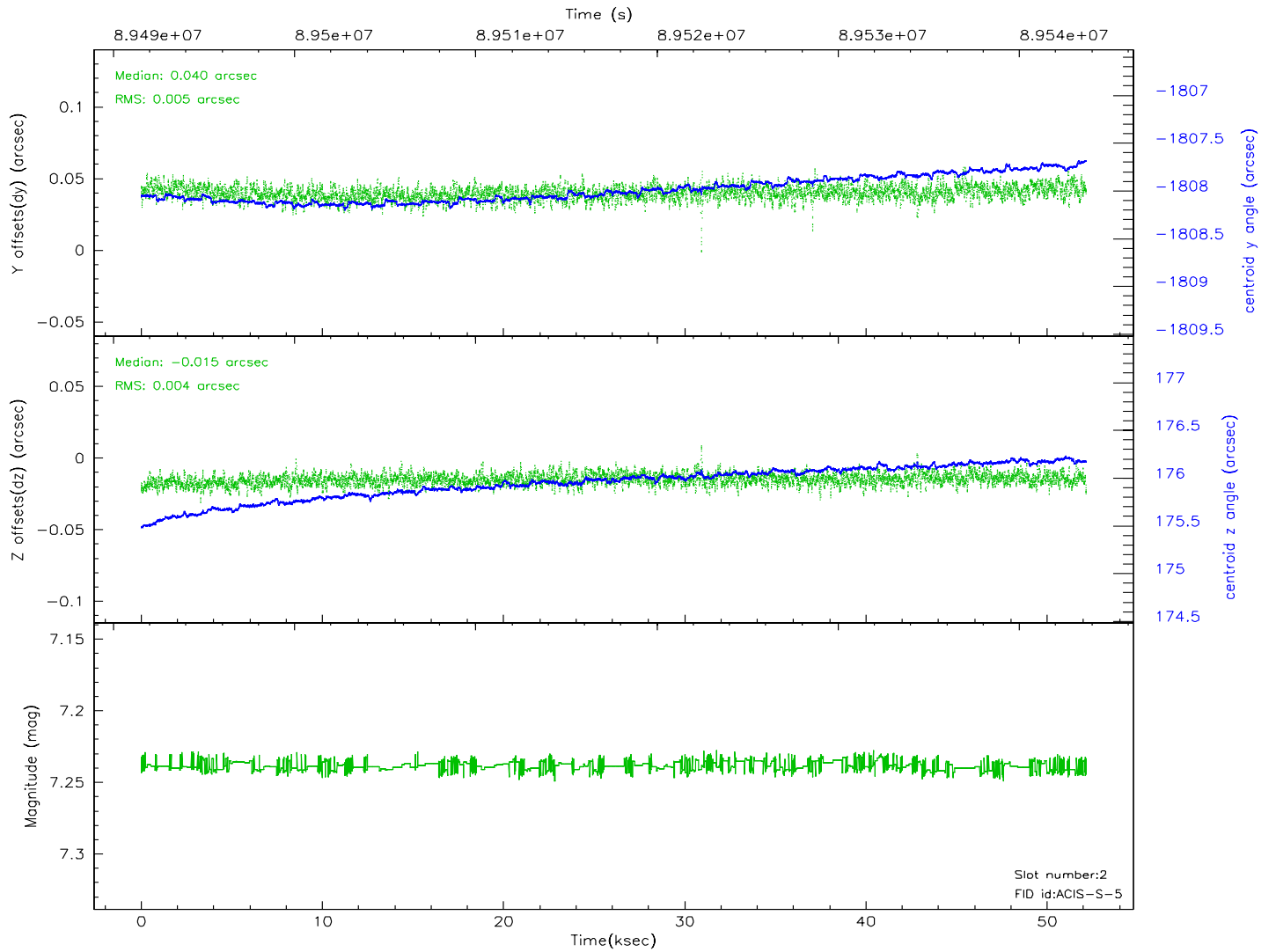
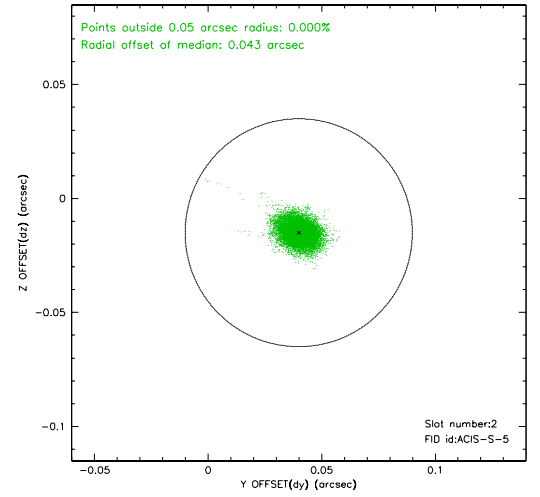
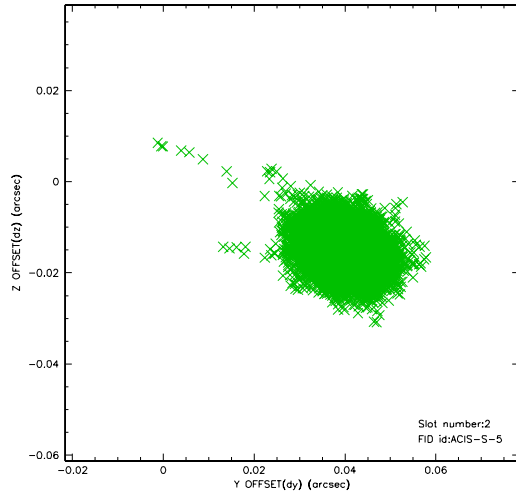
2.5.1 Slot 0



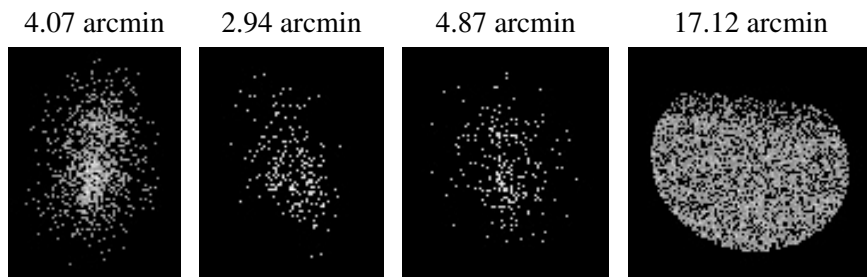
2.5.2 Slot 1



2.5.3 Slot 2



3 Point Sources



A Summary

A.1 Status

V&V Scientist	Jen Lauer
V&V Date (YYYY-MM-DD)	2007.06.14
V&V Edition	1
V&V Disposition and Status	OK
V&V Charge Time	51.558

A.2 Comments

Roll constraint met.