

V&V Reference Report

L2 ASCDS Version : 8.4.3.1

Observation 7404 - L2 Version 2
Chandra X-Ray Center

L2 Processing Date : Apr 9 2012

Contents

1	Front	2
2	OBI	3
2.1	OBI	3
2.1.1	Images	3
2.1.2	Bias	3
2.1.3	Parameters	4
2.1.4	Events	4
2.2	Compared Parameters	5
2.3	Aspect	6
2.4	Star Slots	9
2.4.1	Slot 3	9
2.4.2	Slot 4	10
2.4.3	Slot 5	11
2.4.4	Slot 6	12
2.4.5	Slot 7	13
2.5	FID Slots	14
2.5.1	Slot 0	14
2.5.2	Slot 1	15
2.5.3	Slot 2	16
A	Summary	17
A.1	Status	17
A.2	Comments	17

1 Front

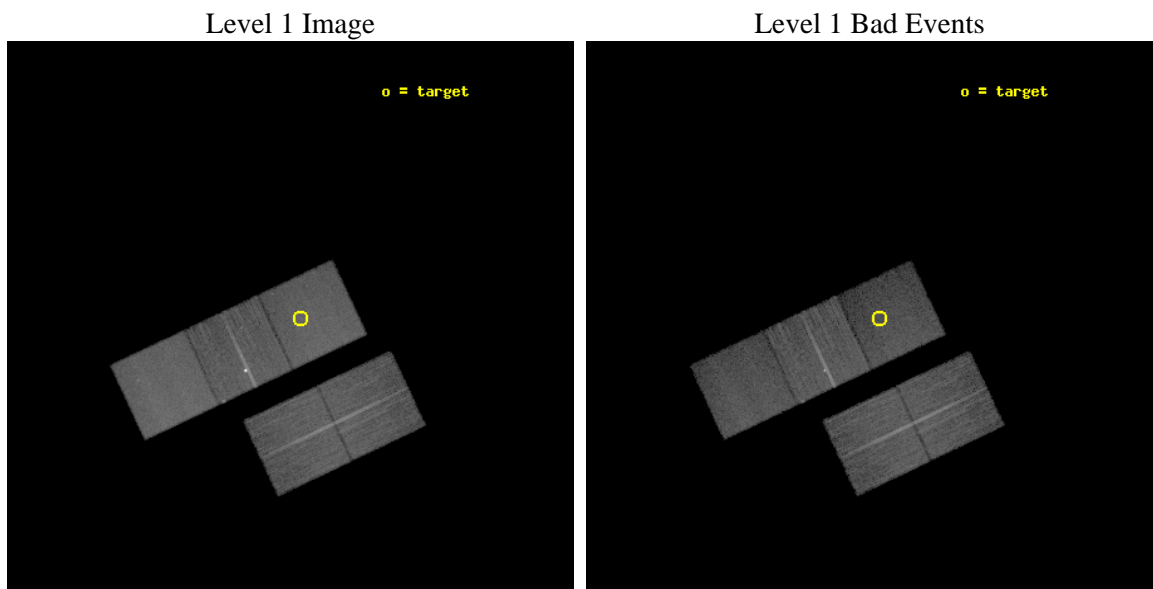
seq_num	800608	Sequence number
obs_id	7404	Observation id
title	MEASURING THE PHYSICAL PROPERTIES OF THE MOST DISTANT X-RAY MASSIVE GALAXY CLUSTER AT $z=1.4$	Proposal title
observer	Dr. Christopher Mullis	Principal investigator
object	XMMU J2235.3-2557	Source name
dtcycle	0	
cycle	P	events from which exps? Prim/Second/Both
ra_targ	338.835833	Observer's specified target RA [deg]
dec_targ	-25.961667	Observer's specified target Dec [deg]
ra_nom	338.85587288791	Nominal RA [deg]
dec_nom	-25.97204835561	Nominal Dec [deg]
roll_nom	334.78014224042	Nominal Roll [deg]
revision	2	Processing version of data
ontime	15186.900116801	Sum of GTIs [s]
livetime	14988.472086342	Livetime [s]
ontime2	15183.759136438	Sum of GTIs [s]
ontime3	15186.900116801	Sum of GTIs [s]
ontime5	15186.900116801	Sum of GTIs [s]
ontime6	15186.900116801	Sum of GTIs [s]
ontime7	15186.900116801	Sum of GTIs [s]
l2events	177300	Number of level 2 events



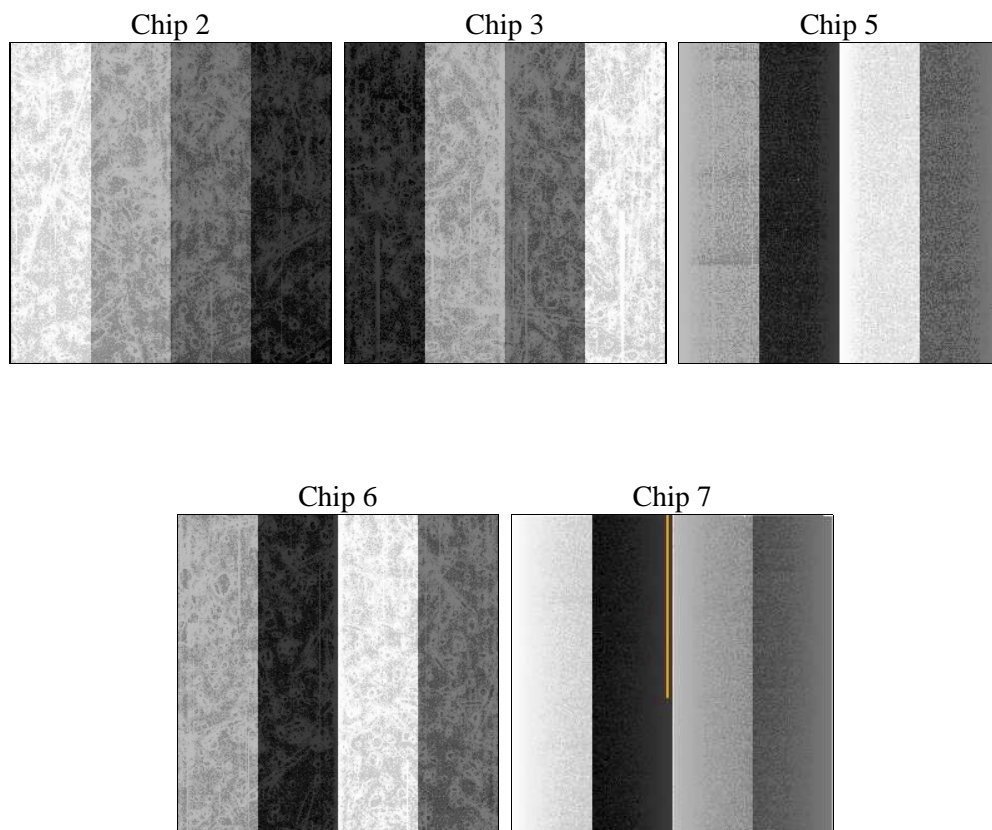
2 OBI

2.1 OBI

2.1.1 Images



2.1.2 Bias



2.1.3 Parameters

obi_num	0	Obi number	sched_exp_time	15000.000000	[s] Scheduled observation exposure time
ascdsver	8.4.3.1	Processing system revision	ontime	15186.900116801	Sum of GTIs [s]
caldbver	4.4.9	 	ontime2	15183.759136438	Sum of GTIs [s]
date	2012-04-09T15:45:15	Date and time of file creation	ontime3	15186.900116801	Sum of GTIs [s]
revision	2	Processing version of data	ontime5	15186.900116801	Sum of GTIs [s]
			ontime6	15186.900116801	Sum of GTIs [s]
			ontime7	15186.900116801	Sum of GTIs [s]
			l1events	712915	Number of level 1 events

2.1.4 Events

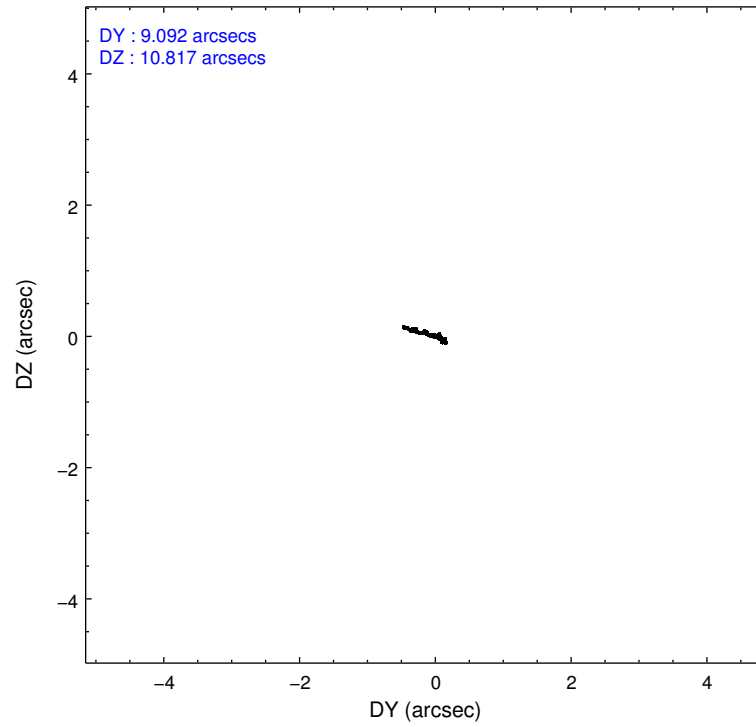
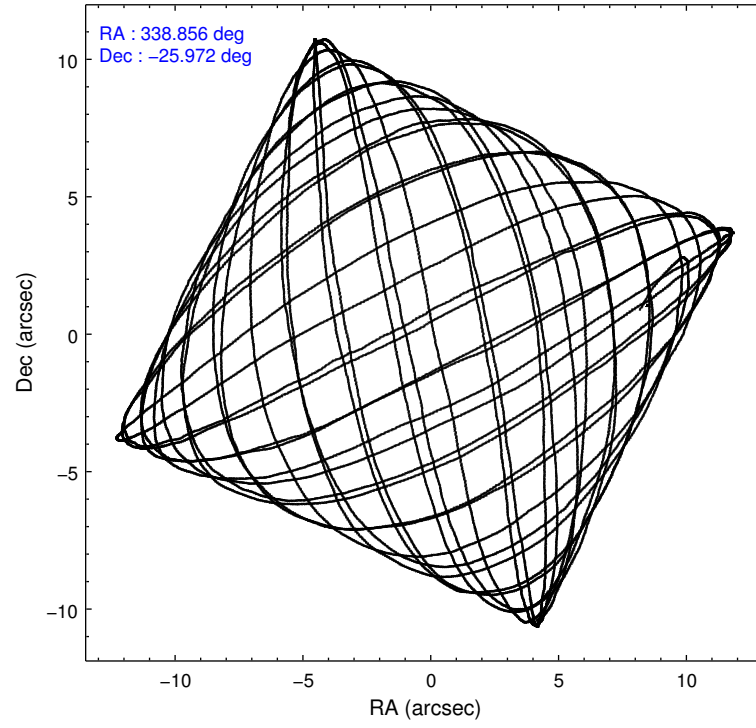
	ccd 2	ccd 3	ccd 5	ccd 6	ccd 7
level 1 events	131770	125893	167159	148816	139277
rejected events	120959	115218	91916	117694	81232
rejected %	91%	91%	54%	79%	58%

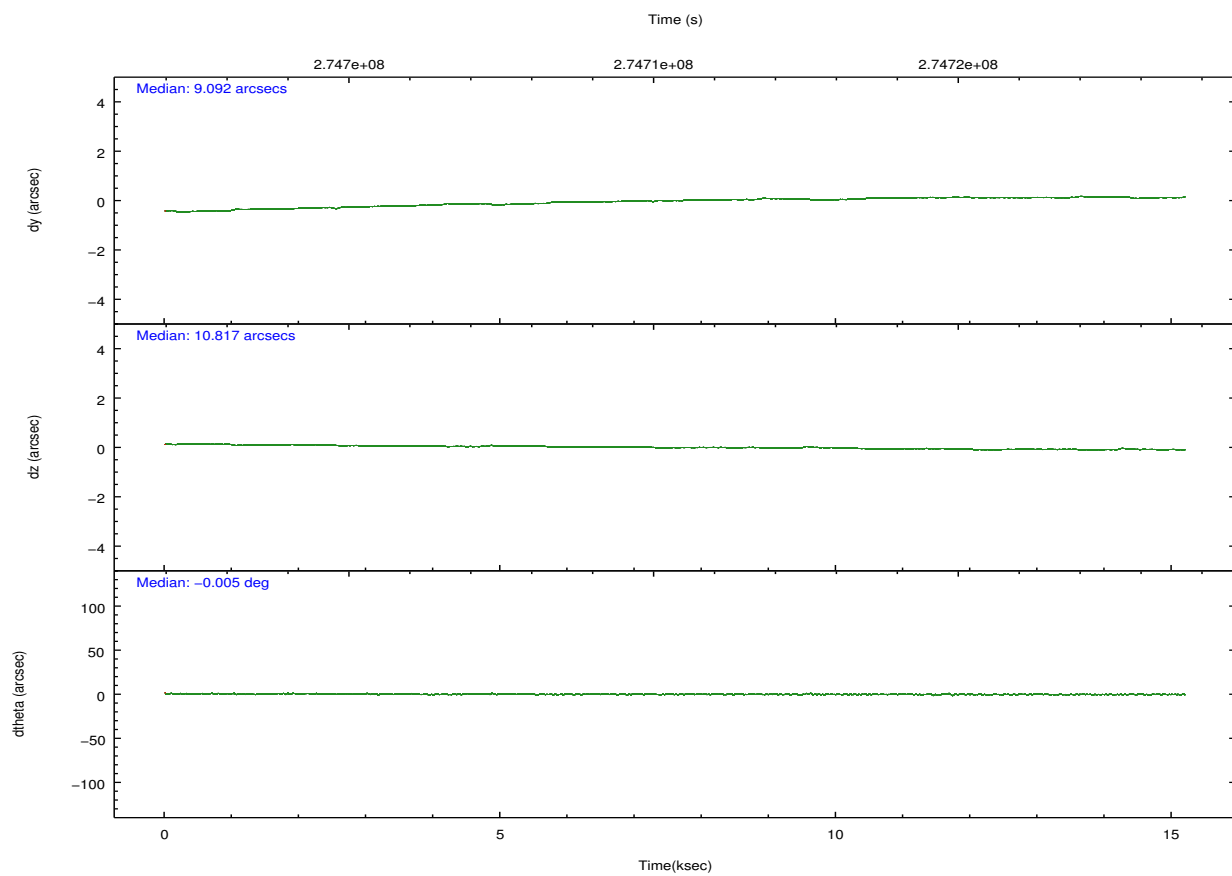
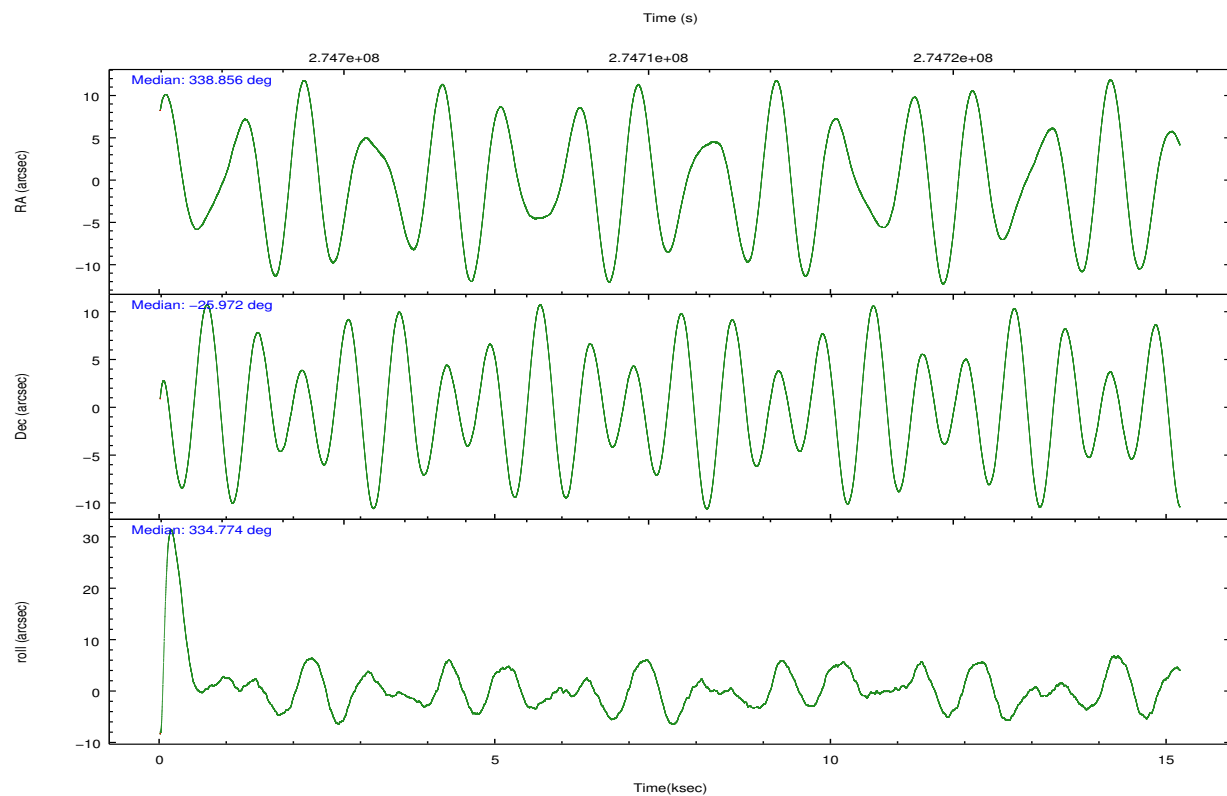
	ccd 2	ccd 3	ccd 5	ccd 6	ccd 7
grade 0 events	4161	4119	5319	18973	5566
	3%	3%	3%	12%	3%
grade 1 events	75	55	169	684	118
	0%	0%	0%	0%	0%
grade 2 events	2772	2438	24717	5394	12721
	2%	1%	14%	3%	9%
grade 3 events	1251	1372	3603	2185	5863
	0%	1%	2%	1%	4%
grade 4 events	1395	1272	3411	2124	5767
	1%	1%	2%	1%	4%
grade 5 events	3837	4951	13418	5358	14795
	2%	3%	8%	3%	10%
grade 6 events	2114	2328	44356	3582	32891
	1%	1%	26%	2%	23%
grade 7 events	116165	109358	72166	110516	61556
	88%	86%	43%	74%	44%

2.2 Compared Parameters

Parameter	Planned	Actual	Parameter	Planned	Actual
Instrument	ACIS	ACIS	Obspar format version number	7	7
Detector	ACIS-23567	ACIS-23567	Obspar file type	PREDICTED	ACTUAL
Grating	NONE	NONE	Obspar update status	NONE	UPDATED
Data mode	VFAINT	VFAINT	Number of optional ACIS chips dropped	0	0
Observation mode	POINTING	POINTING	On-chip summing requested	N	N
[deg] Pointing RA	338.825686	338.8558728879096	Subarray requested	NONE	NONE
[deg] Pointing Dec	-25.974686	-25.97204835560973	Alternating exposures requested	N	N
[deg] Pointing Roll	334.610330	334.780142240421	[s] Primary exposure time	0.000000	3.1
[mm] SIM focus pos	-0.684267	-0.6828225247311905			
[mm] SIM defocus	0	0.001444936568705701			
[mm] SIM translation stage pos	-190.132523	-190.1425803651734			
[mm] SIM translation stage offset	0	0.01005778216563158			
[s] Observation start time (MET)	274702959.184000	274701347.62881			
Observation start date	2006-09-15T10:21:34	2006-09-15T09:55:47			
[s] Observation end time (MET)	274717959.184000	274719295.89216			
Observation end date	2006-09-15T14:31:34	2006-09-15T14:54:55			
Read mode	TIMED	TIMED			

2.3 Aspect



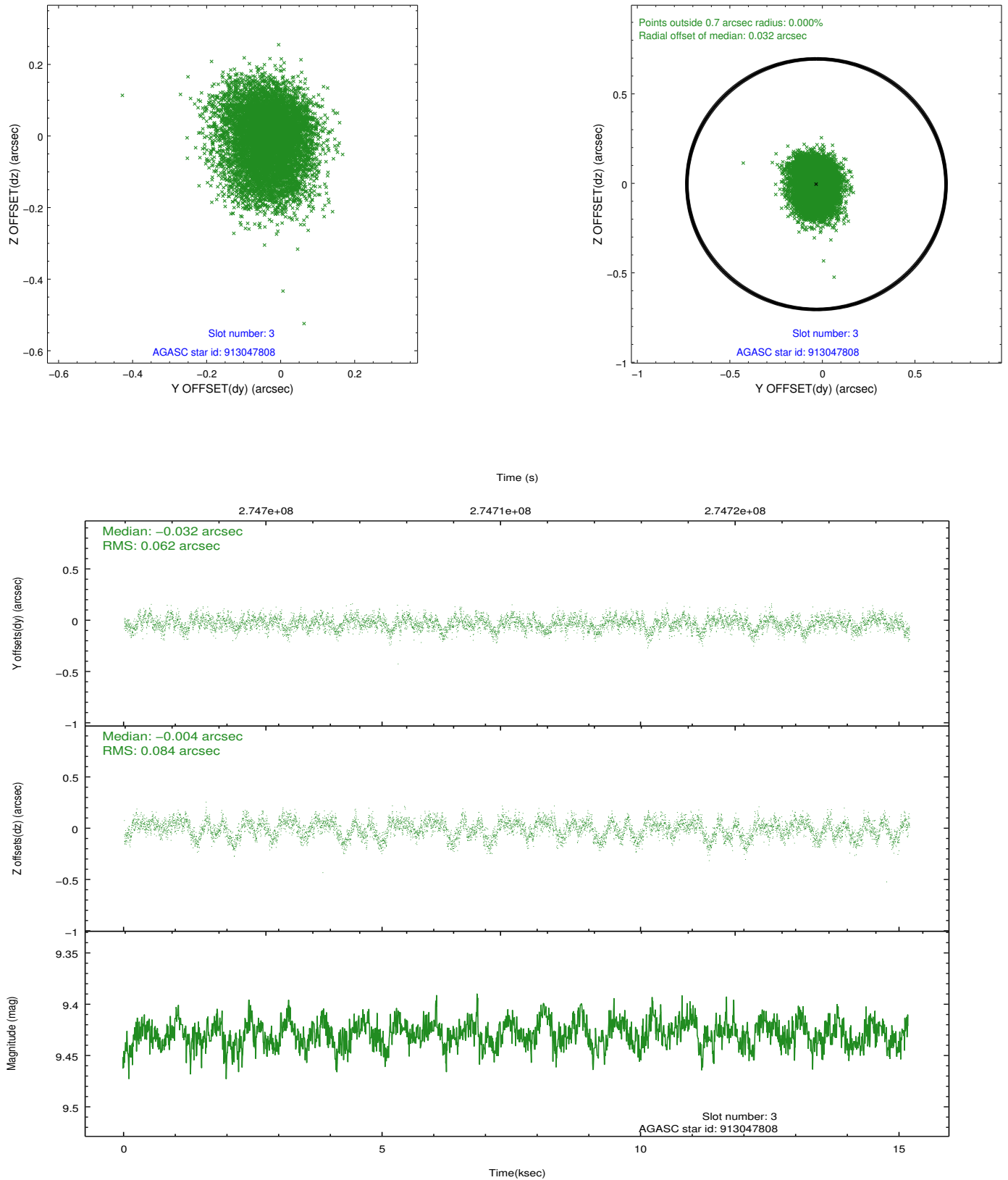


Slot Statistics

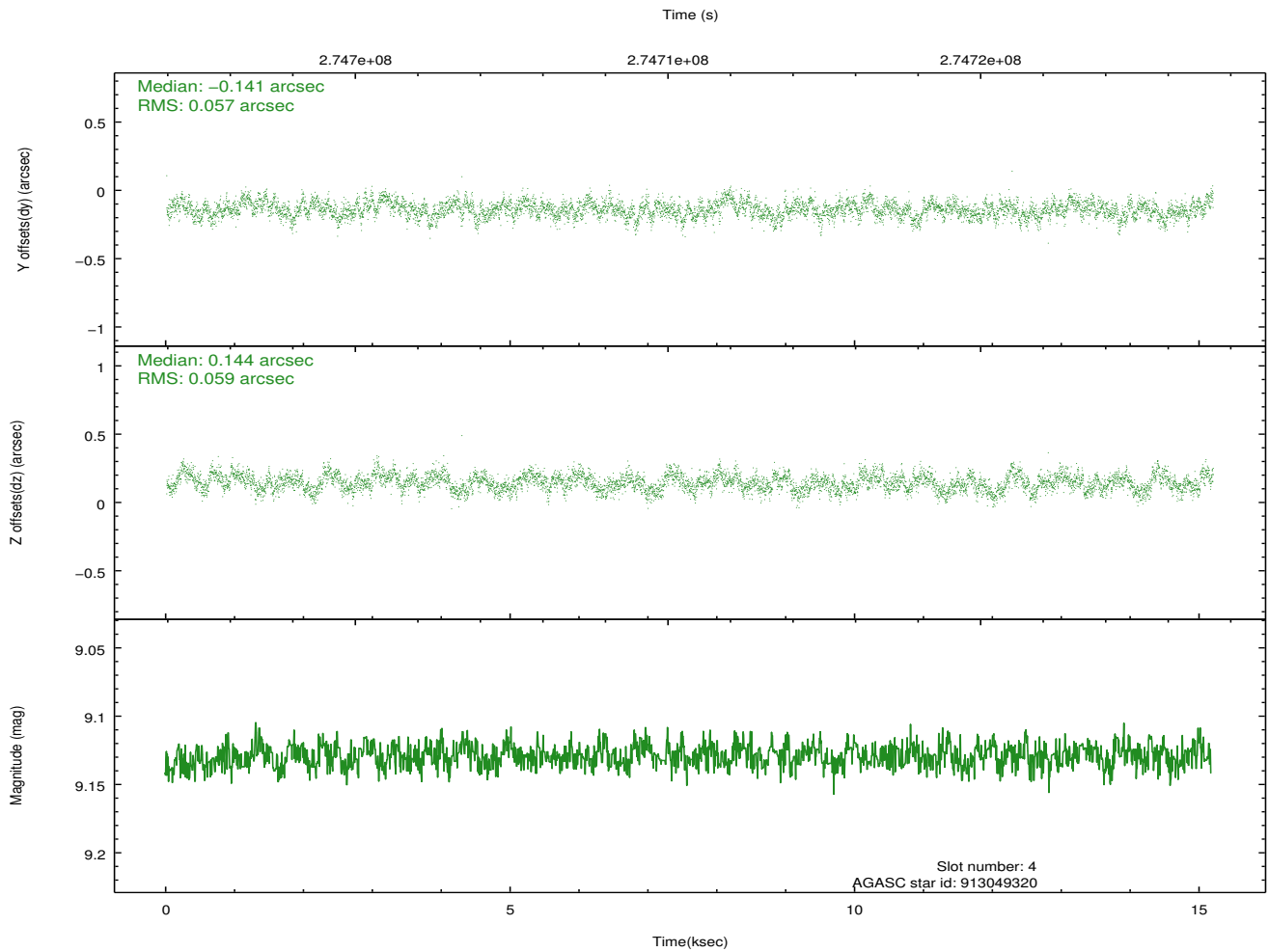
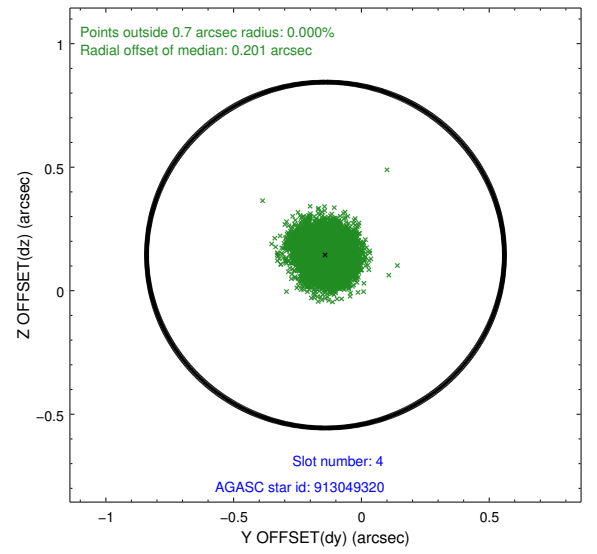
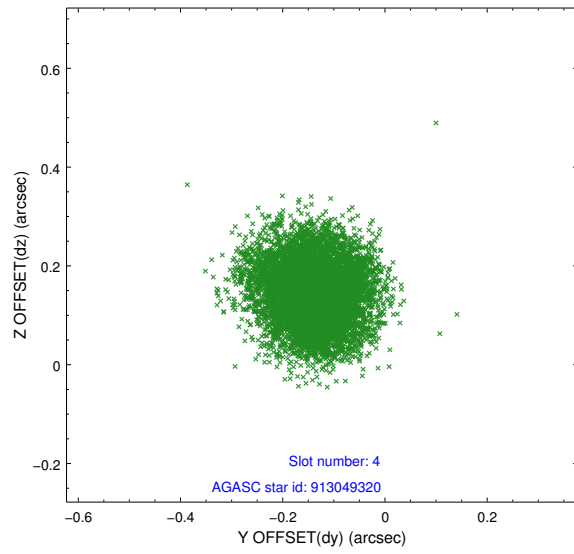
slot	status	id	mag	n_pts	med_dy	med_dz	dr1	dr2	ra	dec	mean_y	mean_z
0	FID	ACIS-S-2	7.11	3706	-0.046	-0.021	0.007	0.012	0.000000	0.000000	-761.84	-1732.08
1	FID	ACIS-S-4	7.21	3706	0.158	0.028	0.009	0.016	0.000000	0.000000	2151.46	176.22
2	FID	ACIS-S-5	7.23	3706	-0.144	0.002	0.007	0.013	0.000000	0.000000	-1814.45	170.11
3	GUIDE	913047808	9.43	7403	-0.032	-0.004	0.111	0.178	338.934868	-25.449672	-489.68	1859.60
4	GUIDE	913049320	9.13	7405	-0.141	0.144	0.089	0.140	338.191374	-25.848811	-2048.37	-476.05
5	GUIDE	913049392	10.34	7391	-0.130	-0.121	0.172	0.280	338.305127	-26.229898	-1123.29	-1554.04
6	GUIDE	913050576	9.76	7404	-0.070	-0.129	0.132	0.209	339.398805	-25.857774	1498.61	1172.74
7	GUIDE	913055744	9.69	7405	0.373	0.113	0.172	0.262	339.034663	-26.334108	1165.09	-879.82

2.4 Star Slots

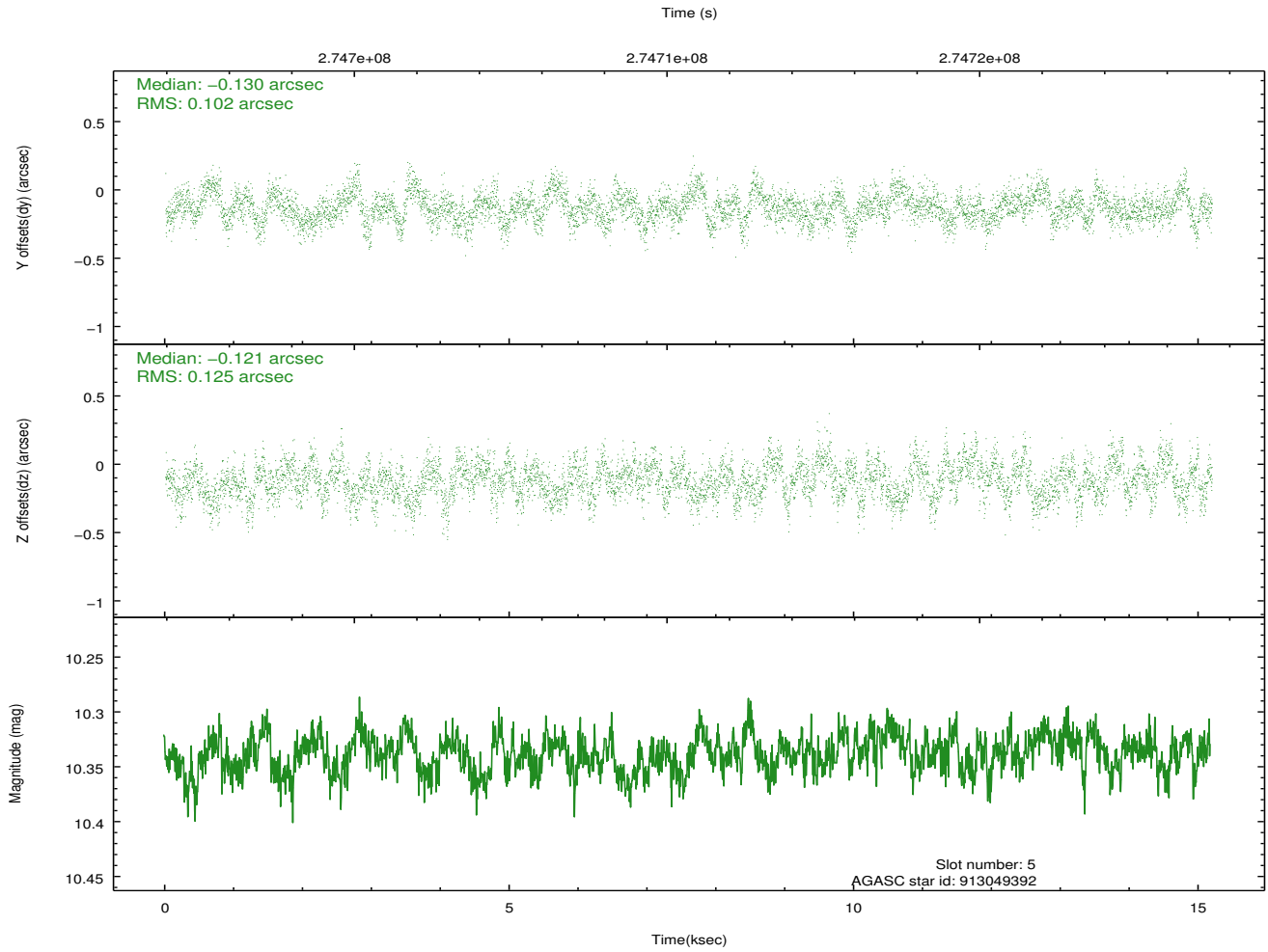
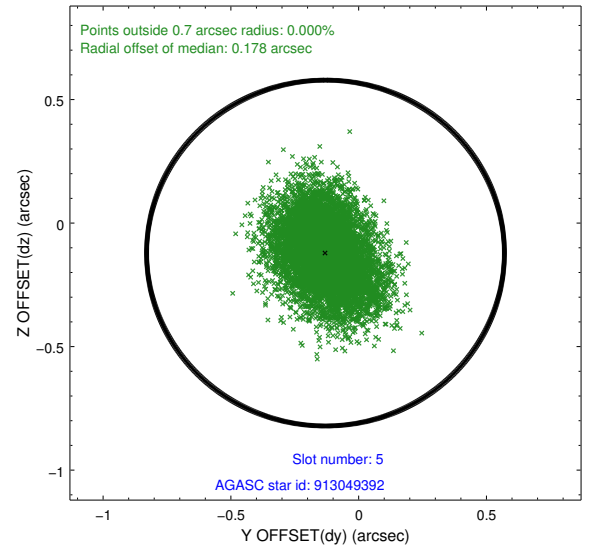
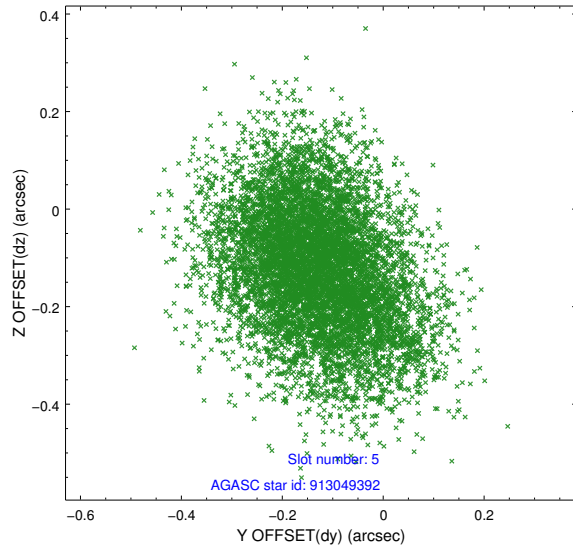
2.4.1 Slot 3



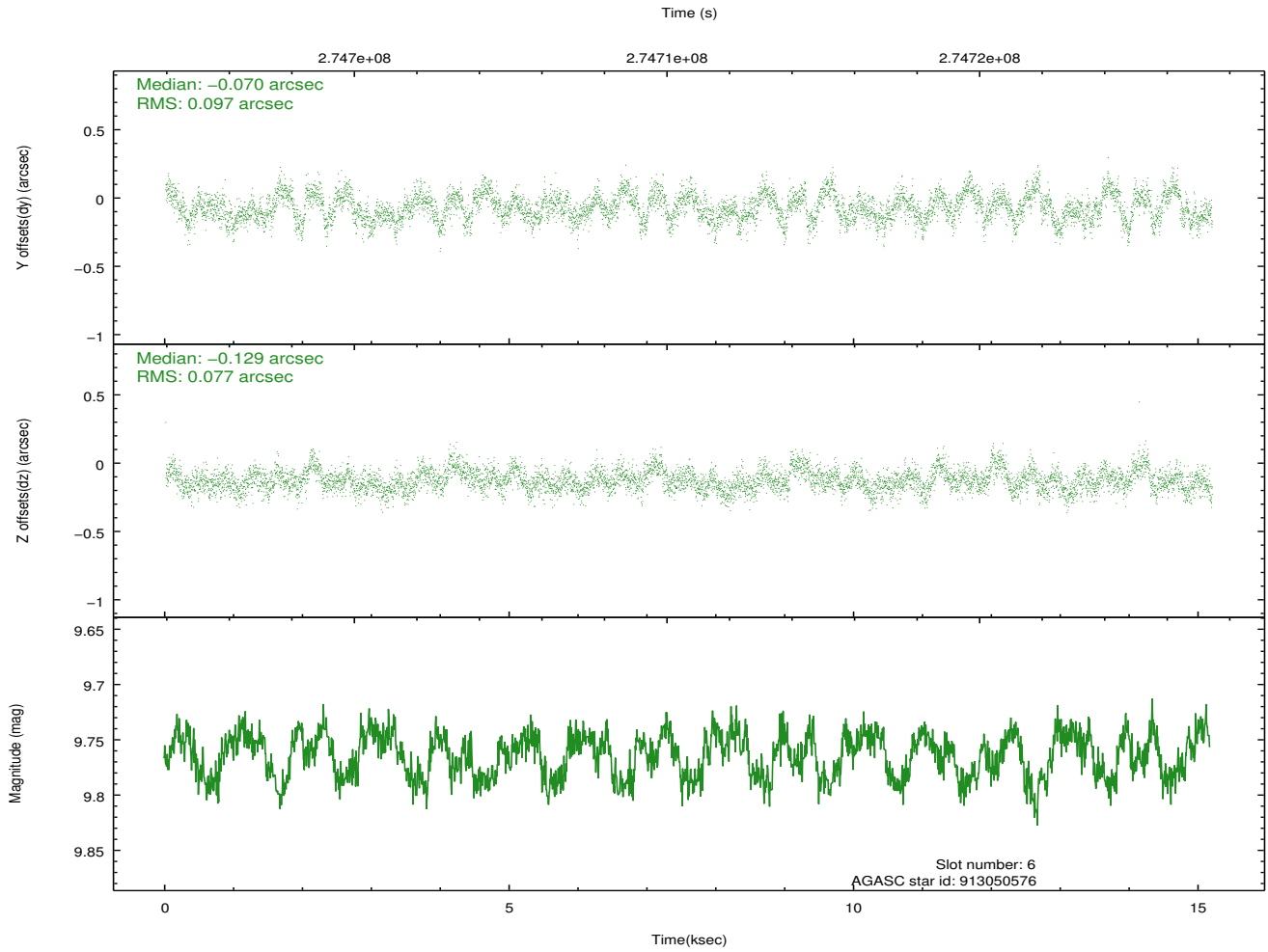
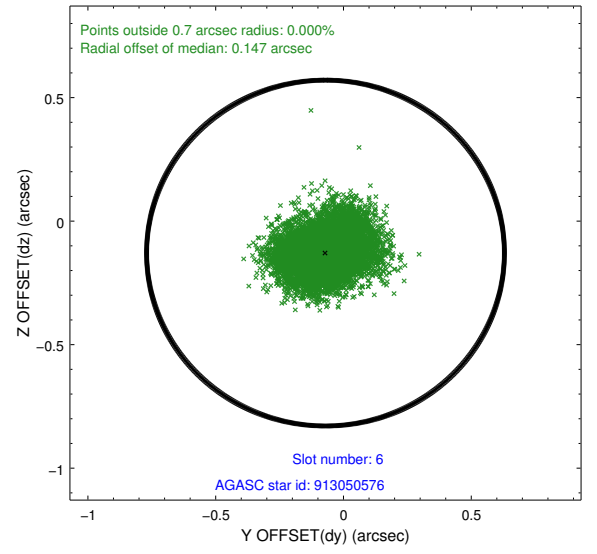
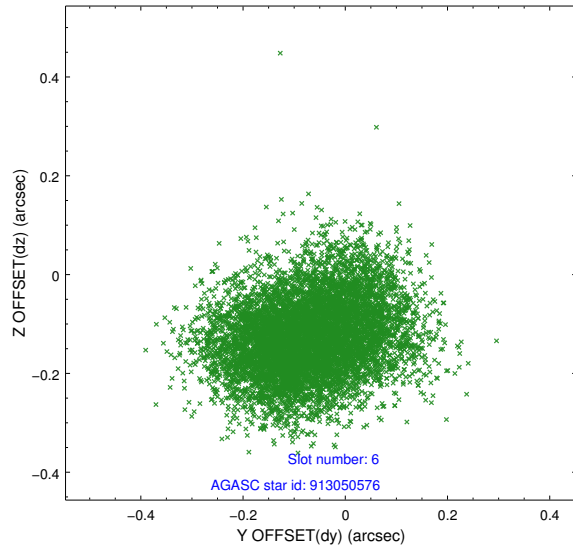
2.4.2 Slot 4



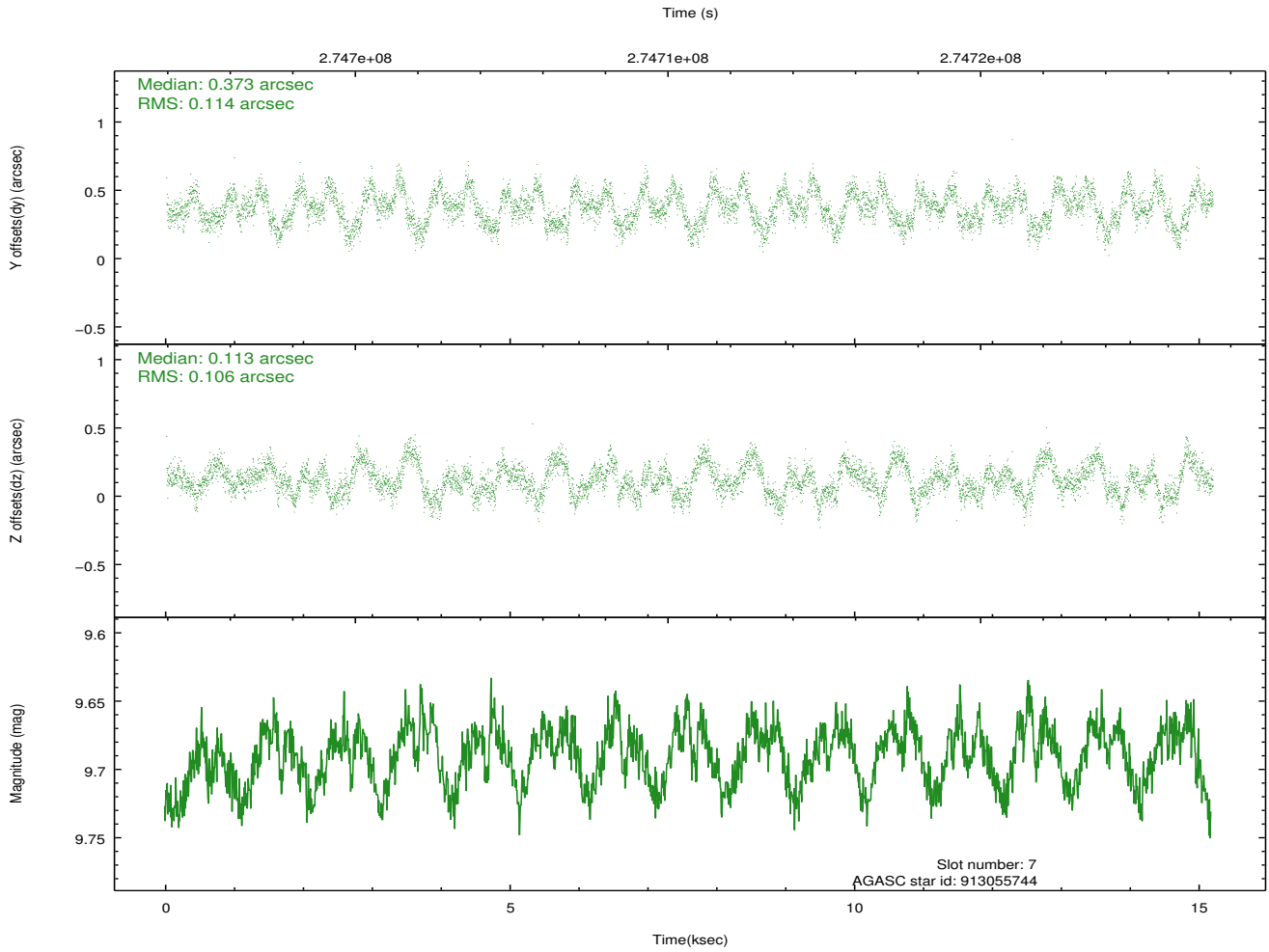
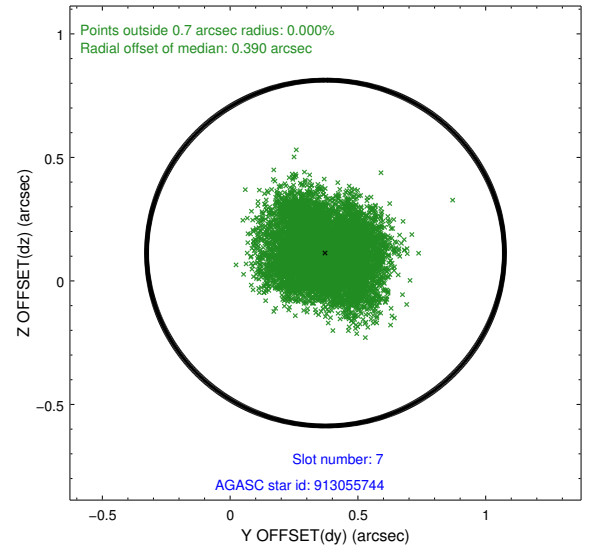
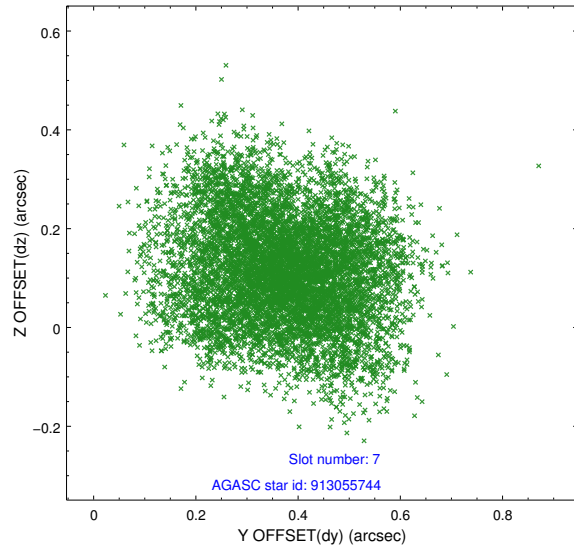
2.4.3 Slot 5



2.4.4 Slot 6

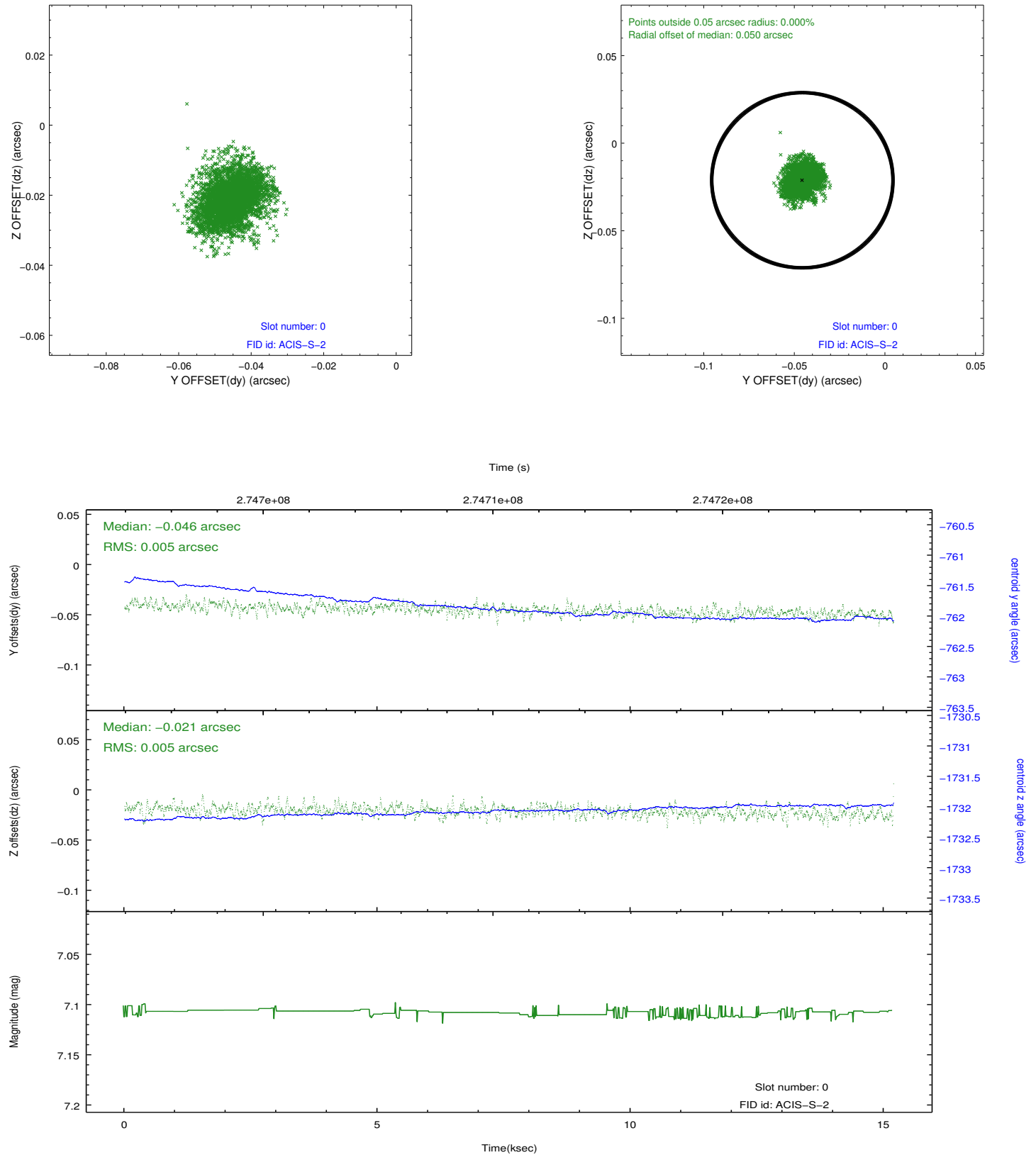


2.4.5 Slot 7

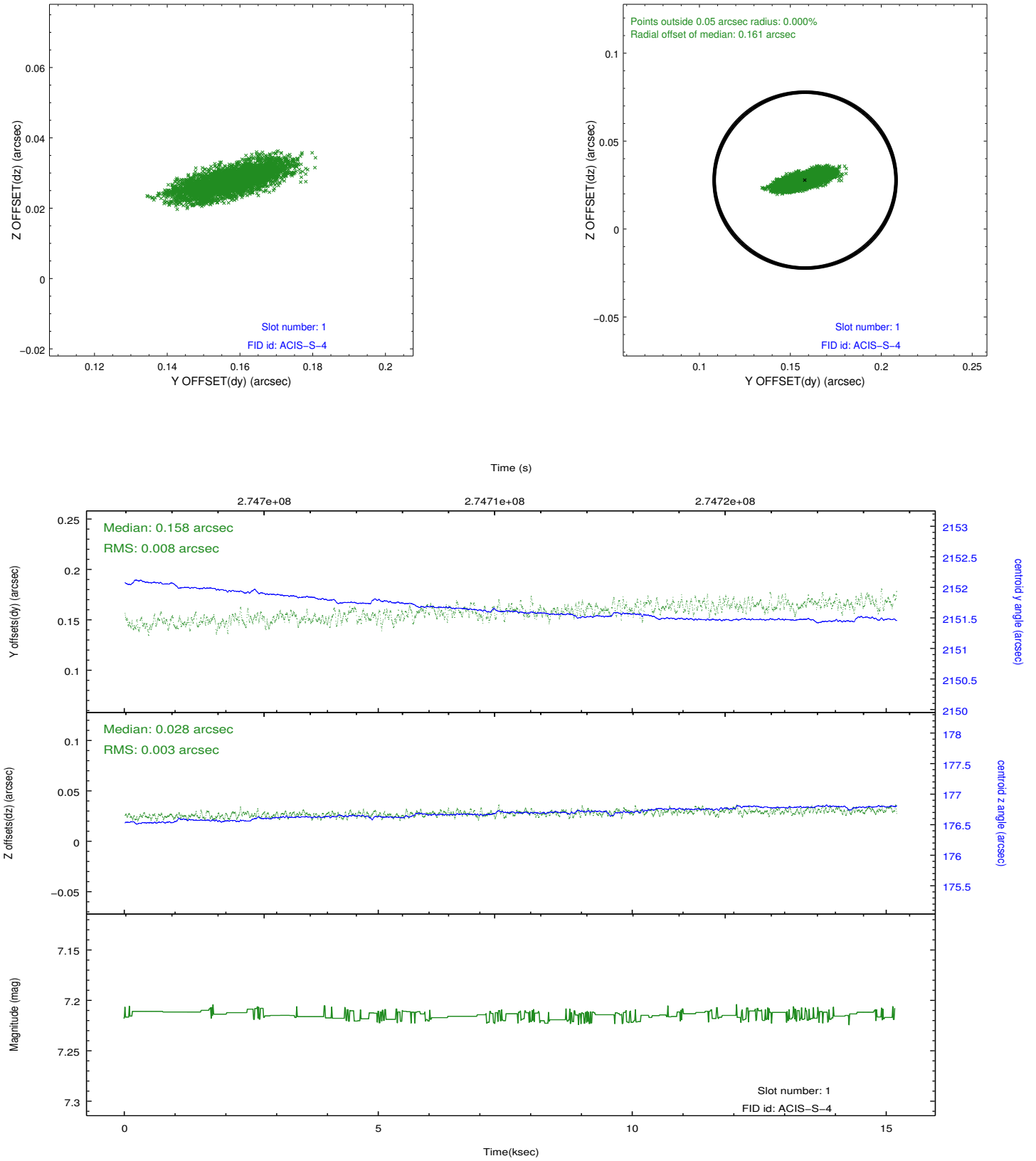


2.5 FID Slots

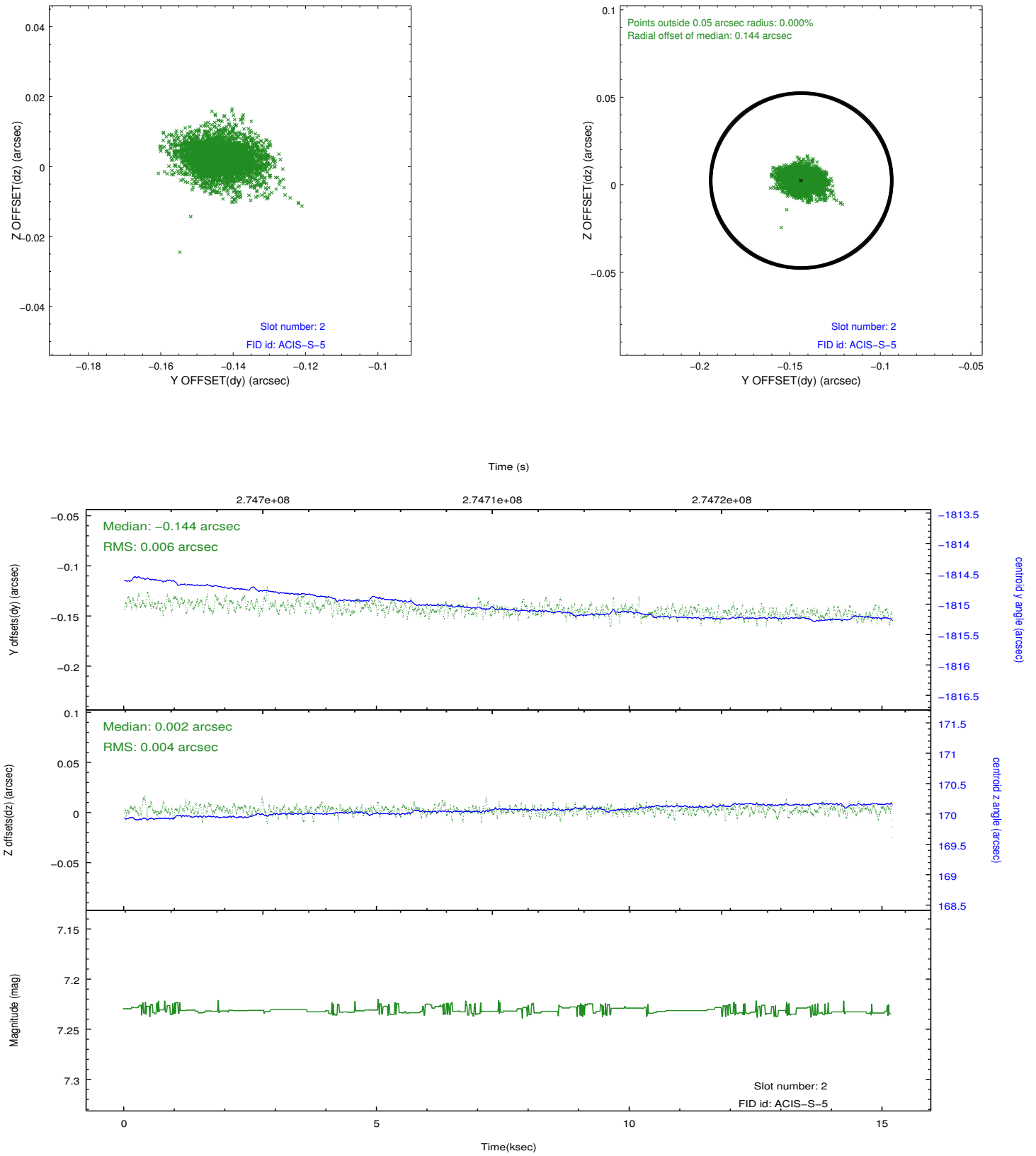
2.5.1 Slot 0



2.5.2 Slot 1



2.5.3 Slot 2



A Summary

A.1 Status

V&V Scientist	Jen Lauer
V&V Date (YYYY-MM-DD)	2012.04.09
V&V Edition	1
V&V Disposition and Status	OK
V&V Charge Time	15.1869001

A.2 Comments