

V&V Reference Report

L2 ASCDS Version : 8.4.3.1

Observation 7004 - L2 Version 2
Chandra X-Ray Center

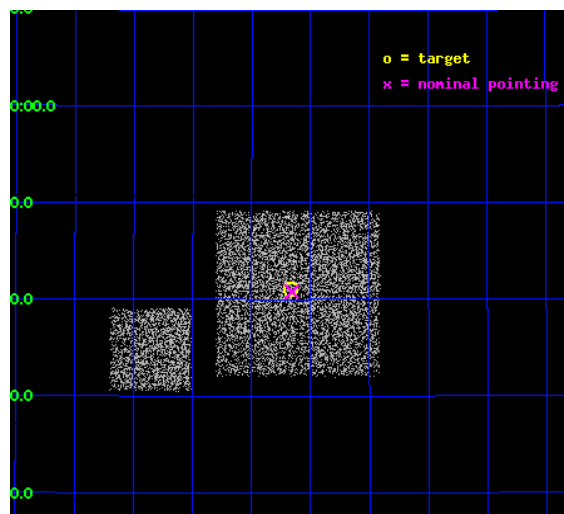
L2 Processing Date : Apr 7 2012

Contents

1	Front	2
2	OBI	3
2.1	OBI	3
2.1.1	Images	3
2.1.2	Bias	3
2.1.3	Parameters	4
2.1.4	Events	4
2.2	Compared Parameters	5
2.3	Aspect	6
2.4	Star Slots	9
2.4.1	Slot 3	9
2.4.2	Slot 4	10
2.4.3	Slot 5	11
2.4.4	Slot 6	12
2.4.5	Slot 7	13
2.5	FID Slots	14
2.5.1	Slot 0	14
2.5.2	Slot 1	15
2.5.3	Slot 2	16
A	Summary	17
A.1	Status	17
A.2	Comments	17

1 Front

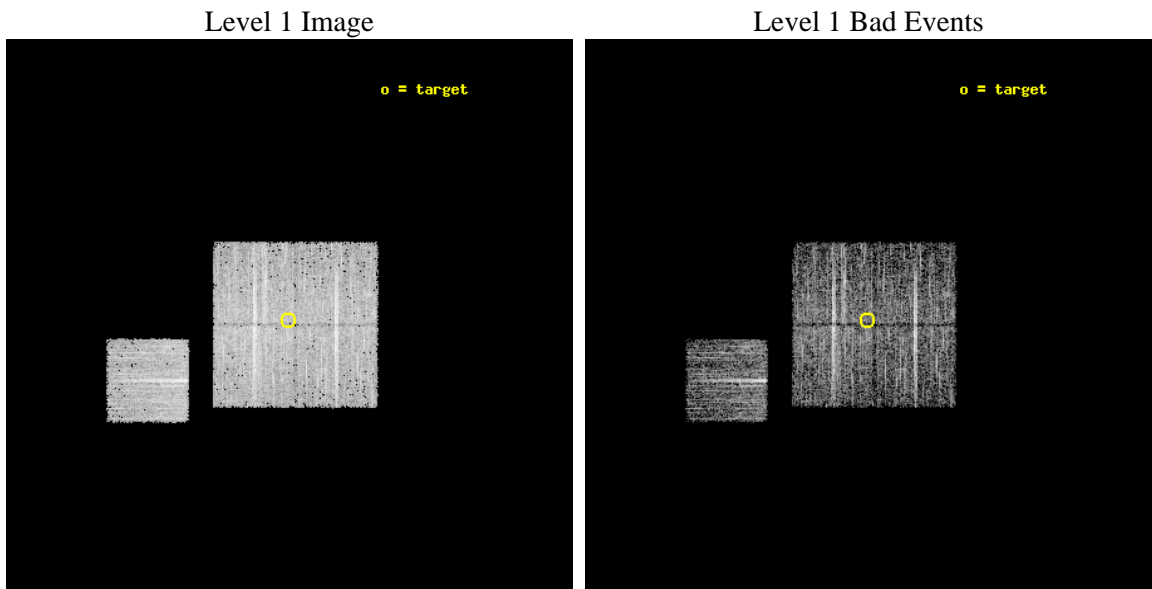
seq_num	900420	Sequence number
obs_id	7004	Observation id
title	Chandra Large Scale Survey of the NOAO Bootes Deep Field (A)	Propo
observer	Dr Stephen Murray	Principal investigator
object	Bootes2 26	Source name
dtcycle	0	
cycle	P	events from which exps? Prim/Second/Both
ra_targ	218.66691	Observer's specified target RA [deg]
dec_targ	34.683956	Observer's specified target Dec [deg]
ra_nom	218.66471775673	Nominal RA [deg]
dec_nom	34.6797372359	Nominal Dec [deg]
roll_nom	270.20991931332	Nominal Roll [deg]
revision	2	Processing version of data
ontime	4473.2590641379	Sum of GTIs [s]
livetime	4414.8126412996	Livetime [s]
ontime0	4473.2590640783	Sum of GTIs [s]
ontime1	4476.4000344276	Sum of GTIs [s]
ontime2	4473.2590640187	Sum of GTIs [s]
ontime3	4473.2590641379	Sum of GTIs [s]
ontime6	4476.4000344276	Sum of GTIs [s]
l2events	12483	Number of level 2 events



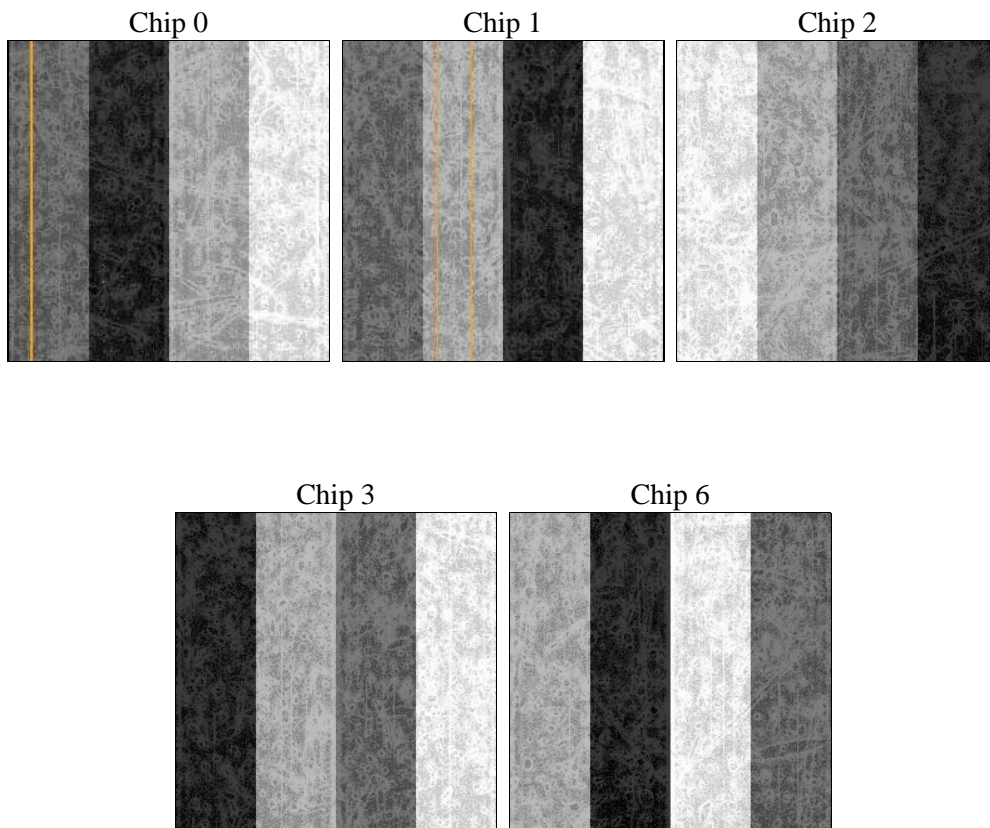
2 OBI

2.1 OBI

2.1.1 Images



2.1.2 Bias



2.1.3 Parameters

obi_num	0	Obi number	sched_exp_time	4700.000000	[s] Scheduled observation exposure time
ascdsver	8.4.3.1	Processing system revision	ontime	4473.2590641379	Sum of GTIs [s]
caldsver	4.4.9	 	ontime0	4473.2590640783	Sum of GTIs [s]
date	2012-04-07T09:06:09	Date and time of file creation	ontime1	4476.4000344276	Sum of GTIs [s]
revision	2	Processing version of data	ontime2	4473.2590640187	Sum of GTIs [s]
			ontime3	4473.2590641379	Sum of GTIs [s]
			ontime6	4476.4000344276	Sum of GTIs [s]
			l1events	159215	Number of level 1 events

2.1.4 Events

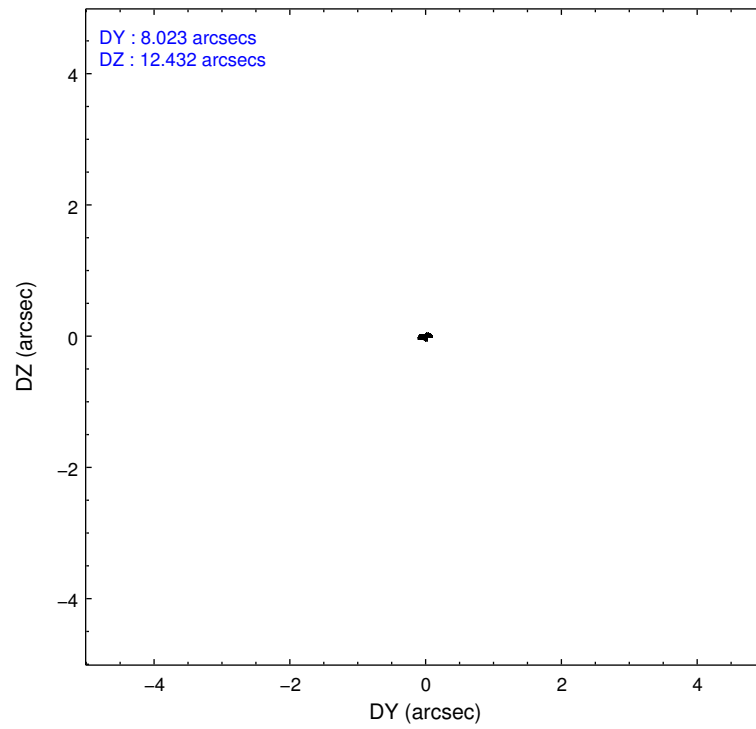
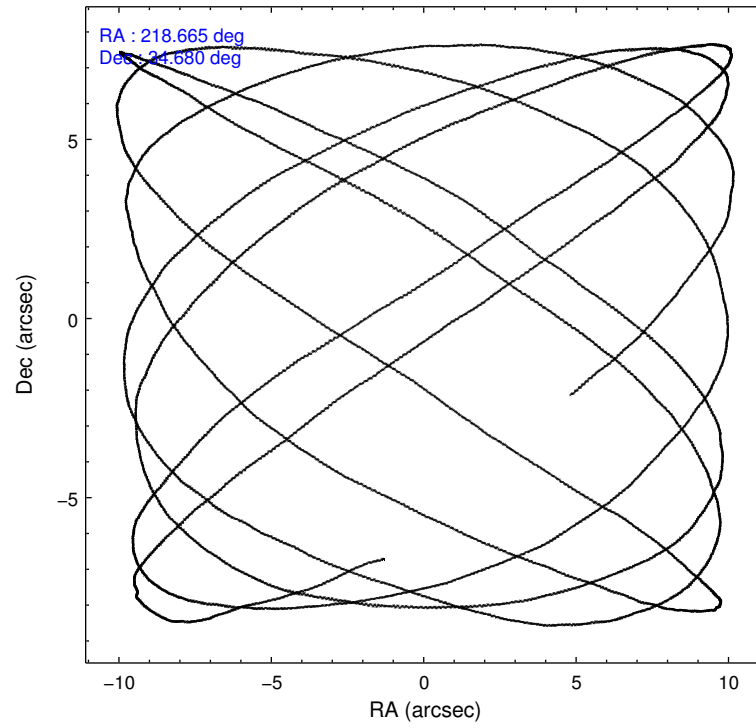
	ccd 0	ccd 1	ccd 2	ccd 3	ccd 6
level 1 events	29991	29788	34086	33158	32192
rejected events	26910	26524	31127	30173	29150
rejected %	89%	89%	91%	90%	90%

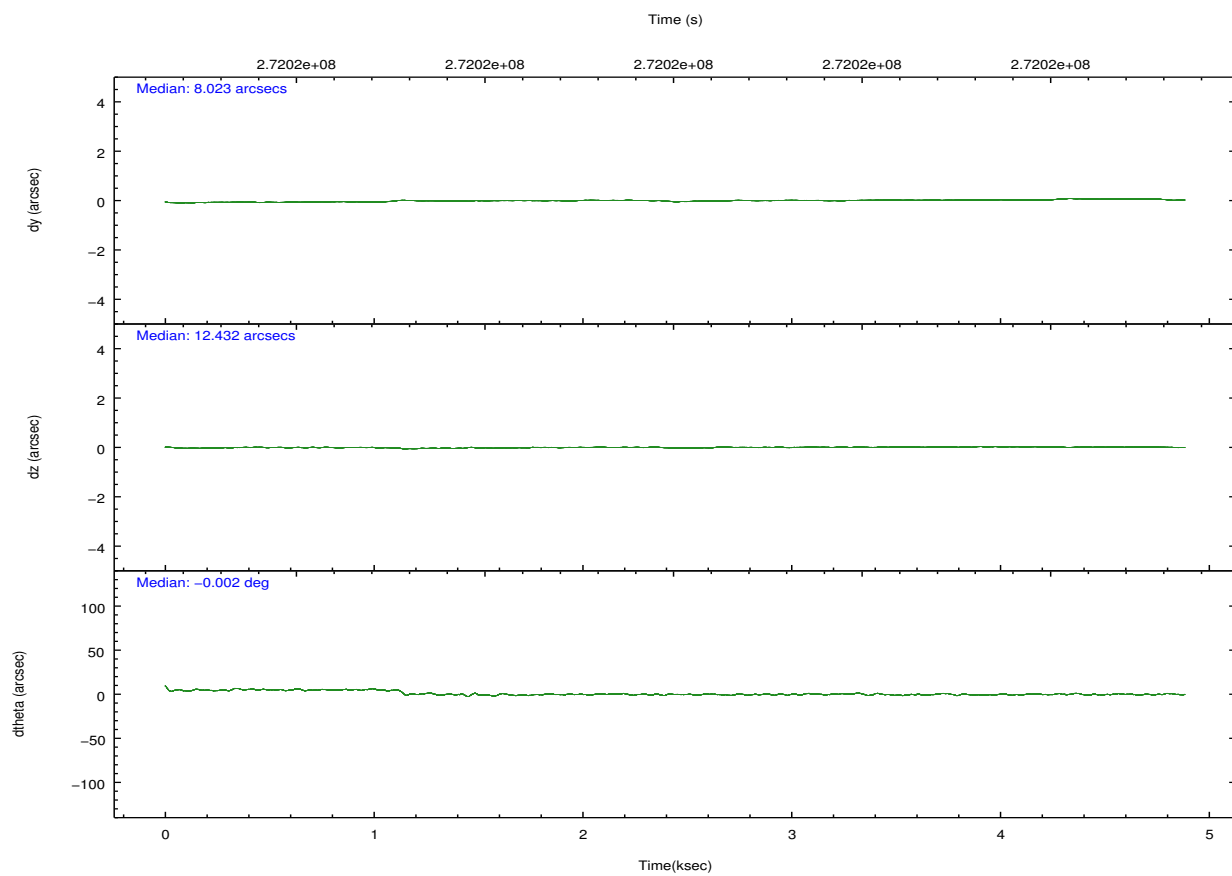
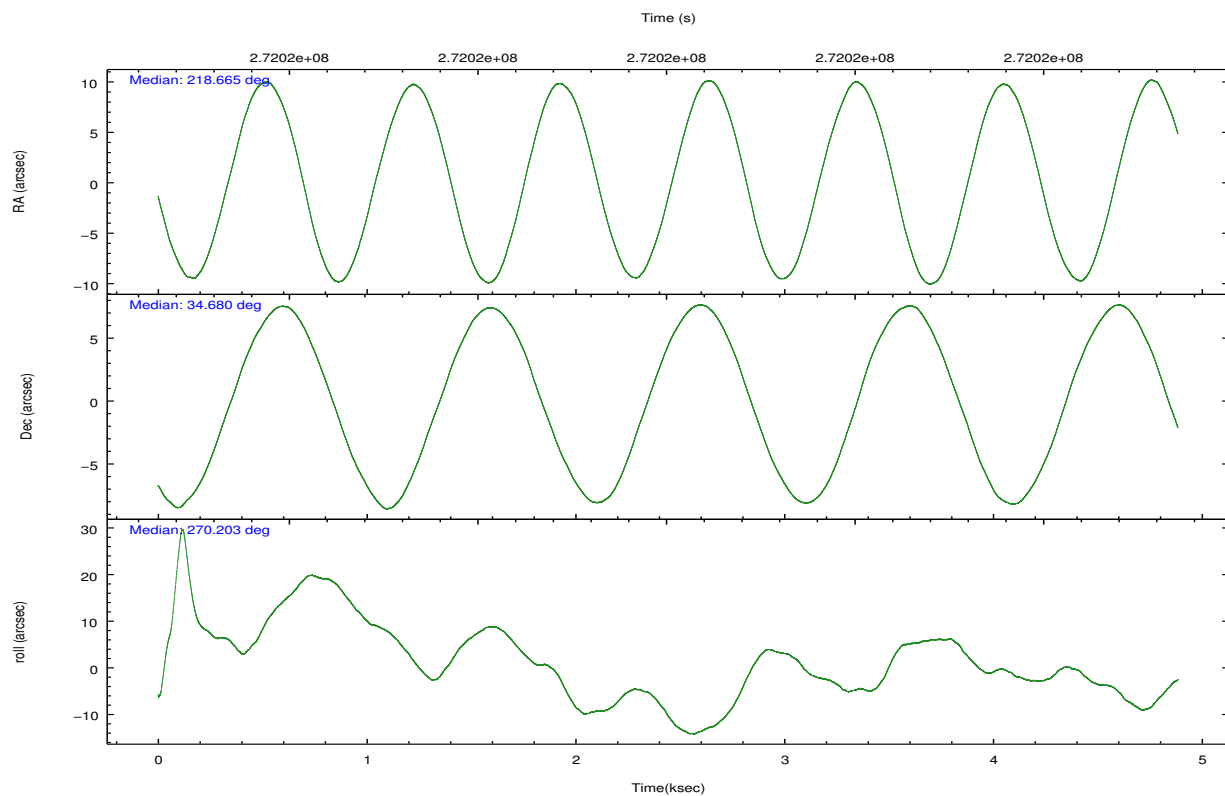
	ccd 0	ccd 1	ccd 2	ccd 3	ccd 6
grade 0 events	1090	1172	1114	1101	1043
	3%	3%	3%	3%	3%
grade 1 events	16	15	23	19	15
	0%	0%	0%	0%	0%
grade 2 events	728	690	731	628	710
	2%	2%	2%	1%	2%
grade 3 events	379	383	287	364	341
	1%	1%	0%	1%	1%
grade 4 events	347	376	322	341	346
	1%	1%	0%	1%	1%
grade 5 events	892	999	877	1072	1019
	2%	3%	2%	3%	3%
grade 6 events	541	646	510	559	609
	1%	2%	1%	1%	1%
grade 7 events	25998	25507	30222	29074	28109
	86%	85%	88%	87%	87%

2.2 Compared Parameters

Parameter	Planned	Actual	Parameter	Planned	Actual
Instrument	ACIS	ACIS	Obspar format version number	7	7
Detector	ACIS-01236	ACIS-01236	Obspar file type	PREDICTED	ACTUAL
Grating	NONE	NONE	Obspar update status	NONE	UPDATED
Data mode	VFAINT	VFAINT	Number of optional ACIS chips dropped	0	0
Observation mode	POINTING	POINTING	On-chip summing requested	N	N
[deg] Pointing RA	218.647847	218.6647177567341	Subarray requested	NONE	NONE
[deg] Pointing Dec	34.703331	34.67973723589963	Alternating exposures requested	N	N
[deg] Pointing Roll	270.010849	270.2099193133226	[s] Primary exposure time	0.000000	3.1
[mm] SIM focus pos	-0.782348	-0.7809083437167272			
[mm] SIM defocus	0	0.001439871863259334			
[mm] SIM translation stage pos	-233.592463	-233.5874344608287			
[mm] SIM translation stage offset	0	-0.005018542100998502			
[s] Observation start time (MET)	272018743.184000	272018367.97773			
Observation start date	2006-08-15T08:44:38	2006-08-15T08:39:27			
[s] Observation end time (MET)	272023443.184000	272023577.54048			
Observation end date	2006-08-15T10:02:58	2006-08-15T10:06:17			
Read mode	TIMED	TIMED			

2.3 Aspect



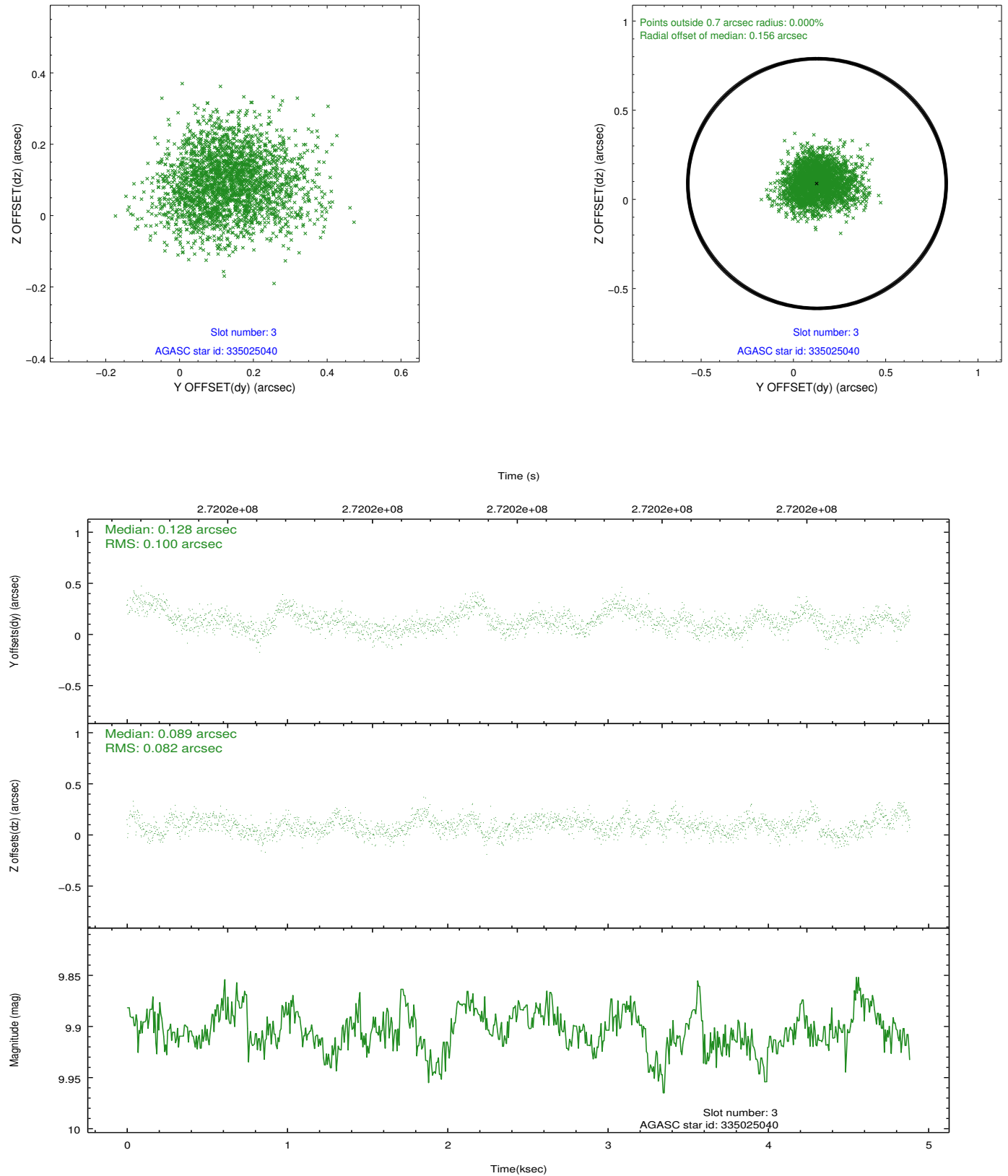


Slot Statistics

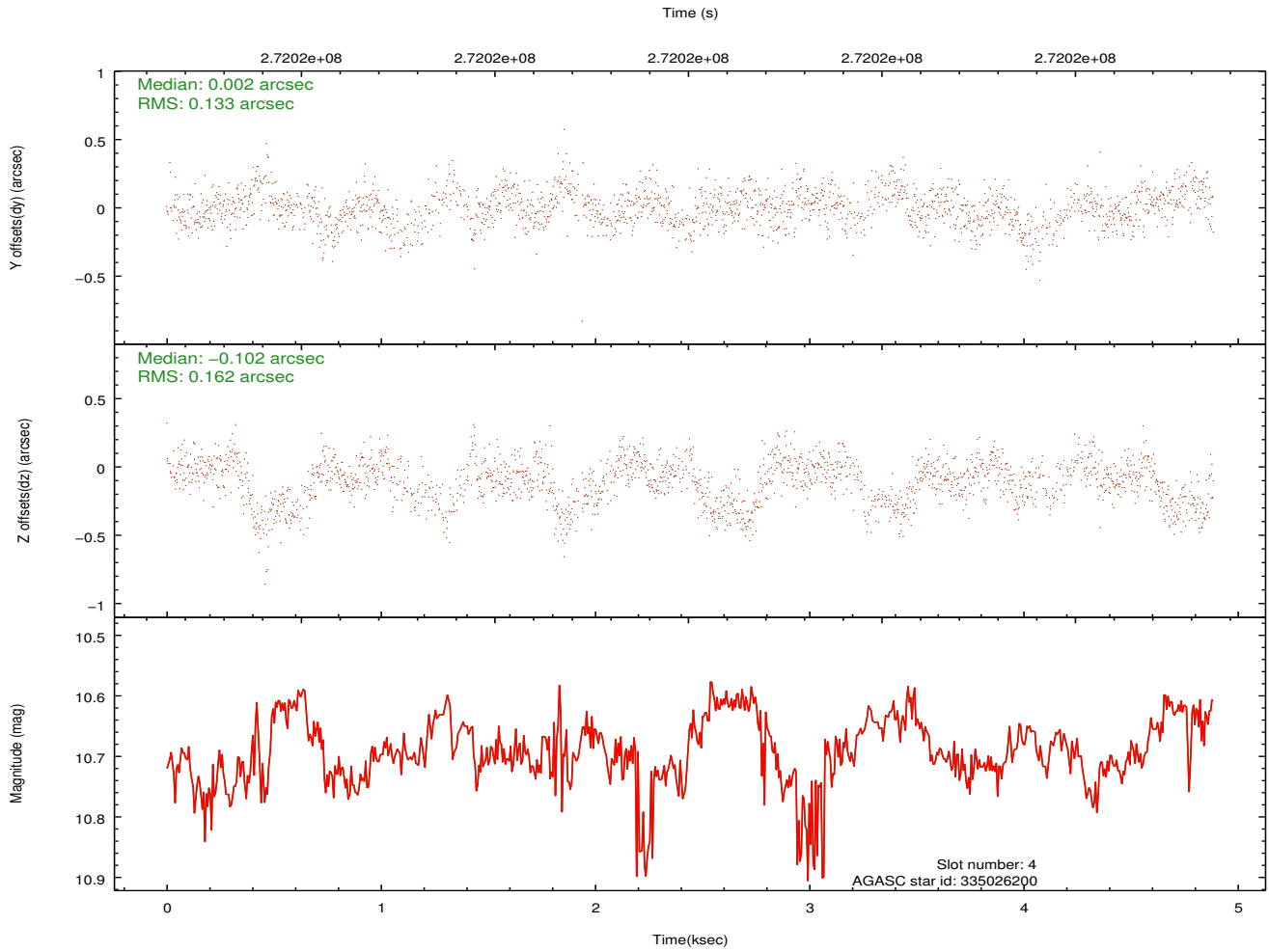
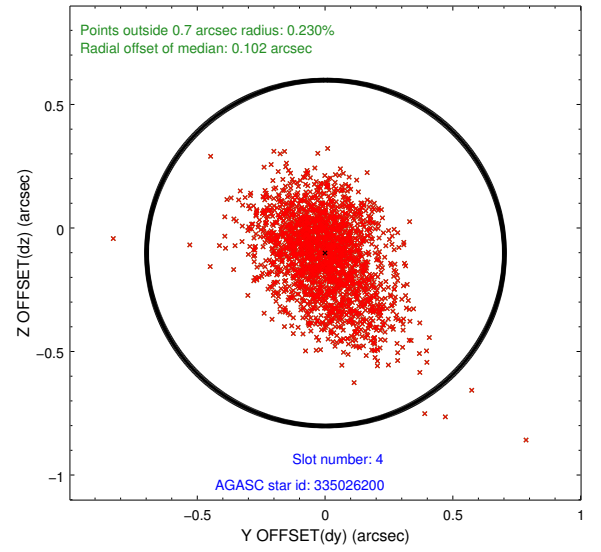
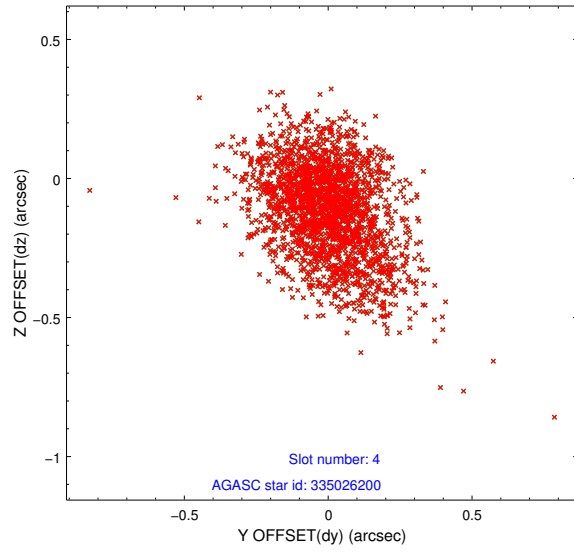
slot	status	id	mag	n_pts	med_dy	med_dz	dr1	dr2	ra	dec	mean_y	mean_z
0	FID	ACIS-I-2	7.14	1191	-0.102	-0.116	0.016	0.063	0.000000	0.000000	-762.64	-842.43
1	FID	ACIS-I-4	7.18	1192	0.207	0.092	0.012	0.030	0.000000	0.000000	2151.16	1063.30
2	FID	ACIS-I-5	7.22	1192	-0.209	0.092	0.013	0.034	0.000000	0.000000	-1814.97	1062.58
3	GUIDE	335025040	9.90	2375	0.128	0.089	0.137	0.224	218.601670	34.305240	1433.45	-137.19
4	BAD	335026200	10.70	2174	0.002	-0.102	0.220	0.364	218.096425	34.160577	1950.50	-1642.62
5	GUIDE	335152968	9.77	2380	-0.033	0.034	0.150	0.253	219.446087	34.867883	-600.35	2357.39
6	GUIDE	335153056	10.16	2378	-0.002	-0.167	0.208	0.310	219.264627	34.869152	-602.47	1822.76
7	GUIDE	335414336	8.96	2382	-0.085	0.149	0.098	0.155	218.979022	35.090910	-1396.95	976.71

2.4 Star Slots

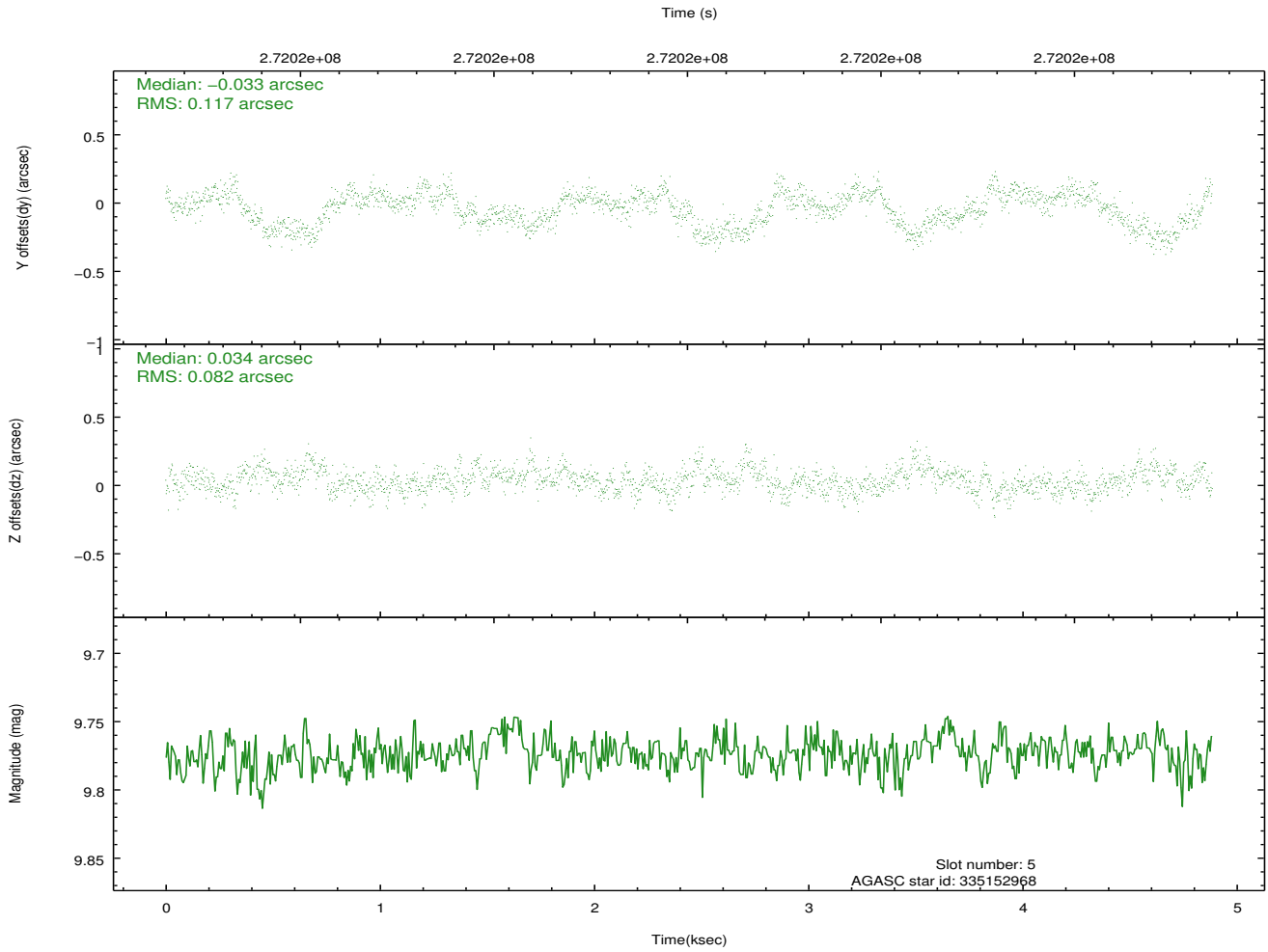
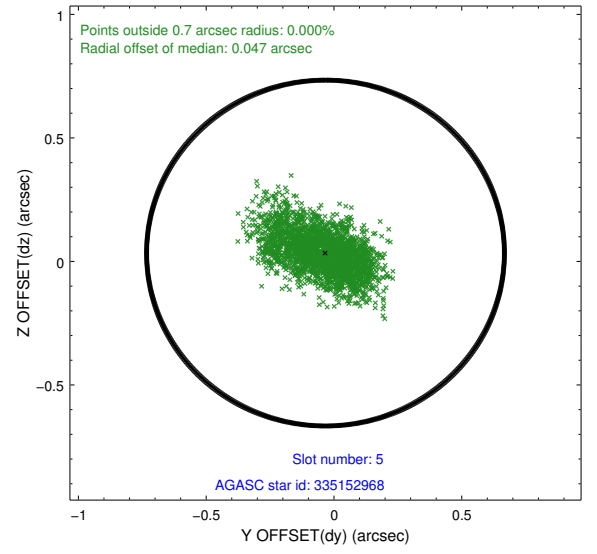
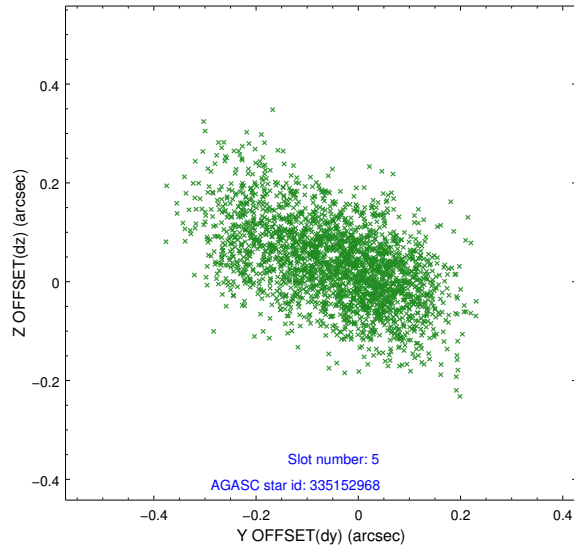
2.4.1 Slot 3



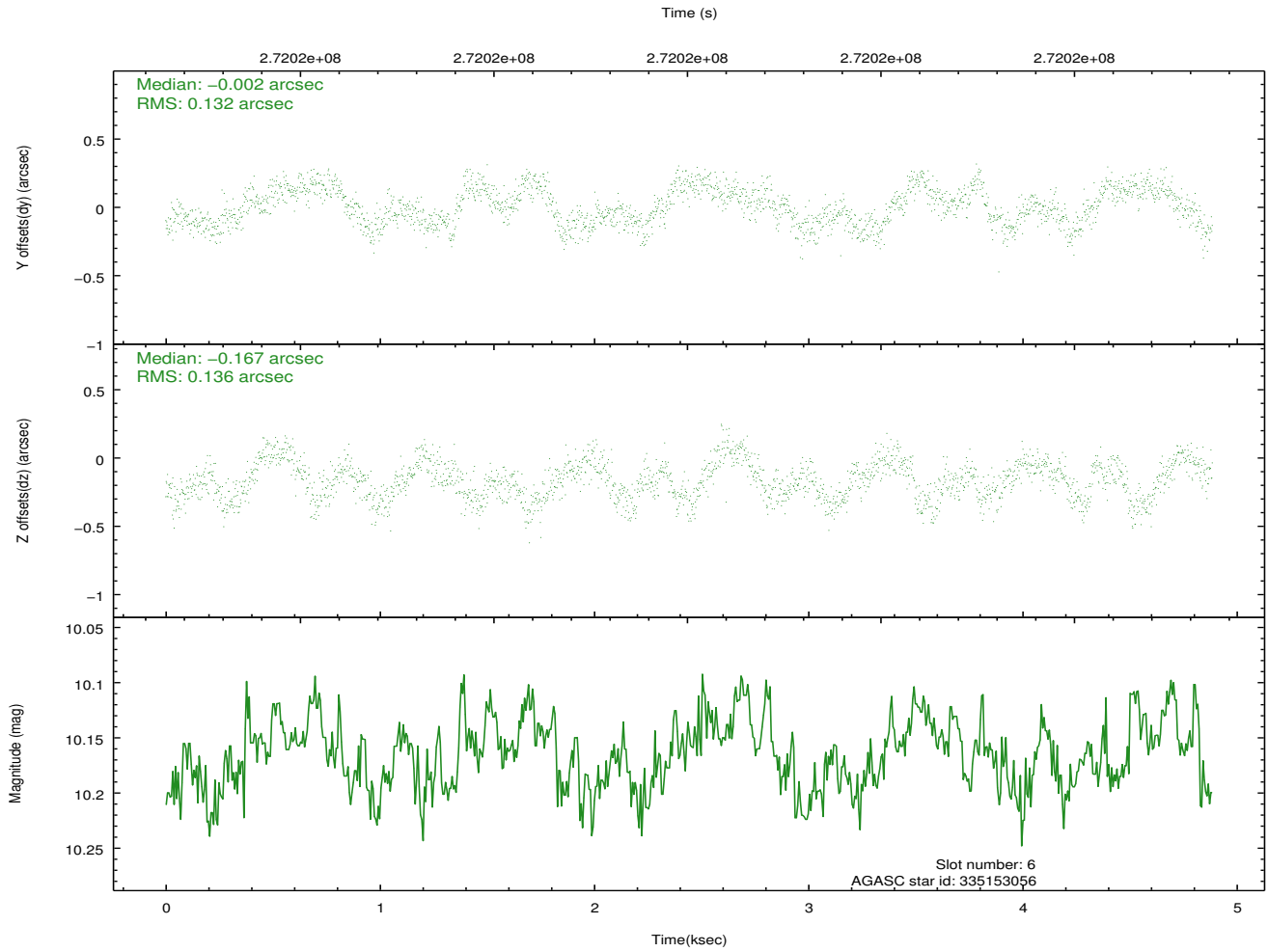
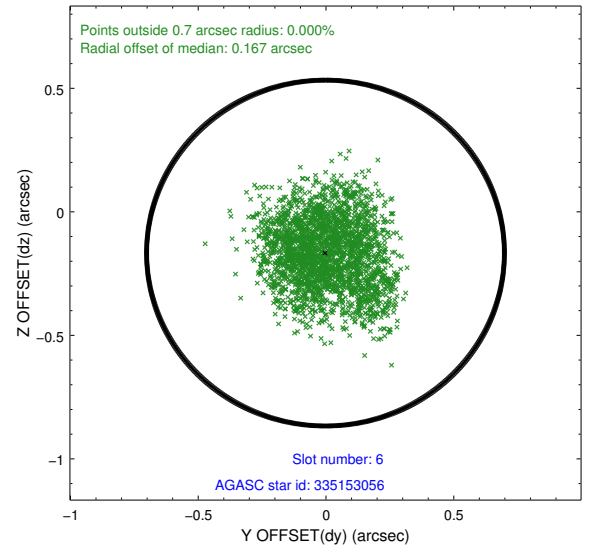
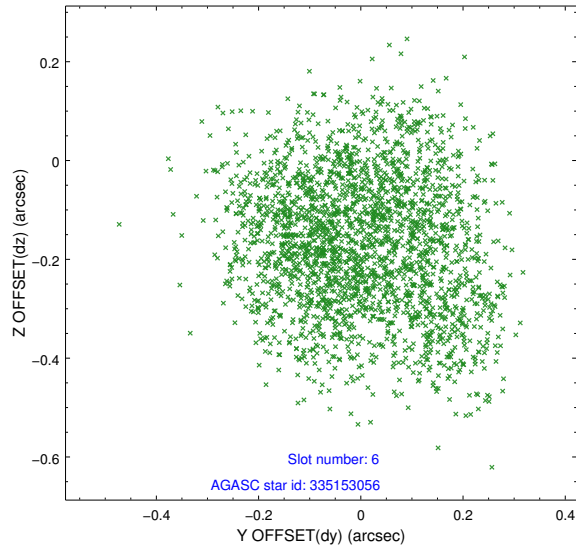
2.4.2 Slot 4



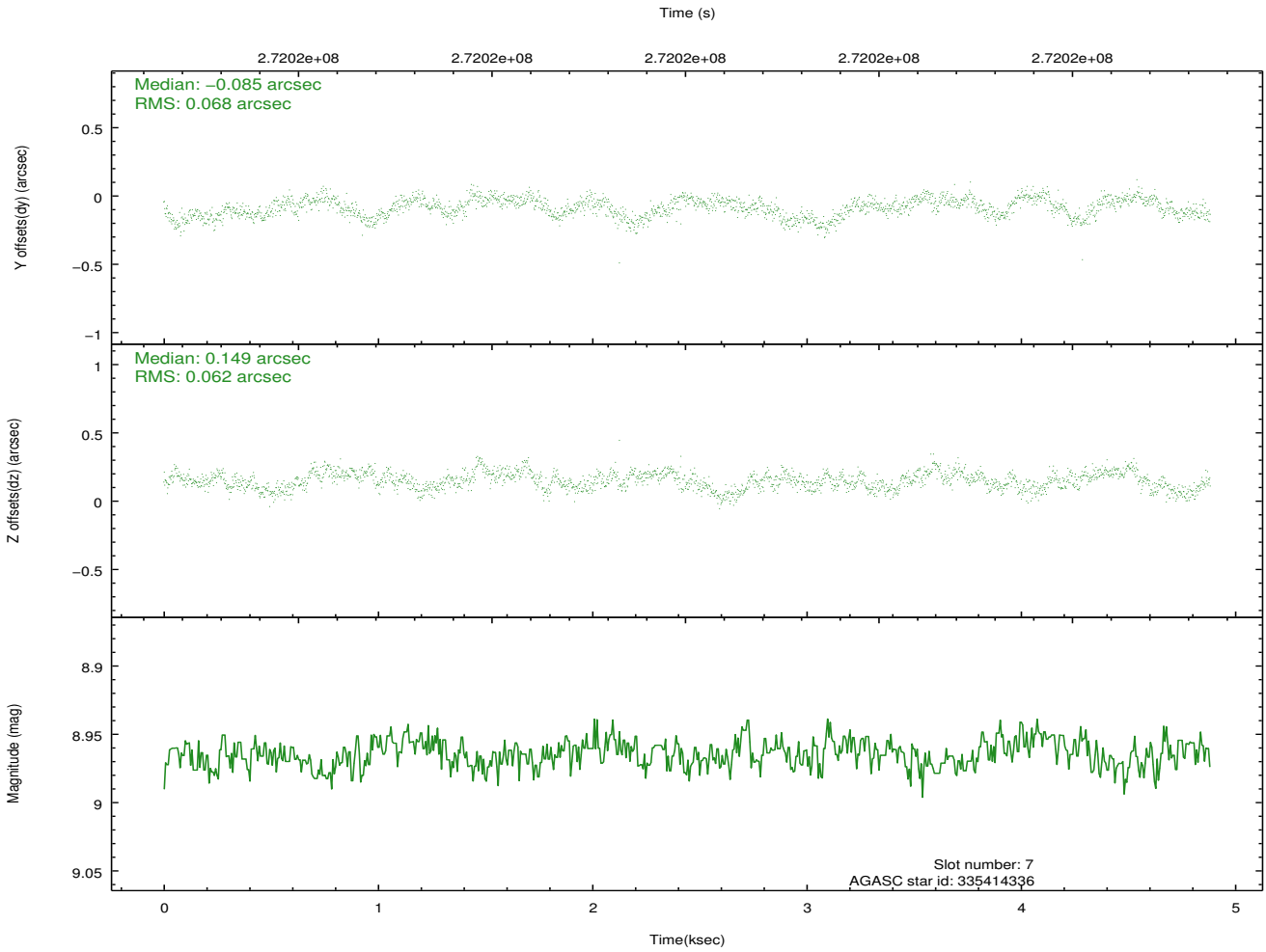
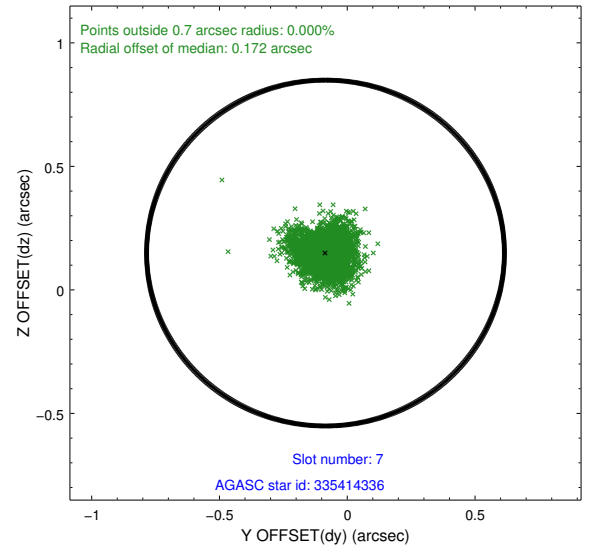
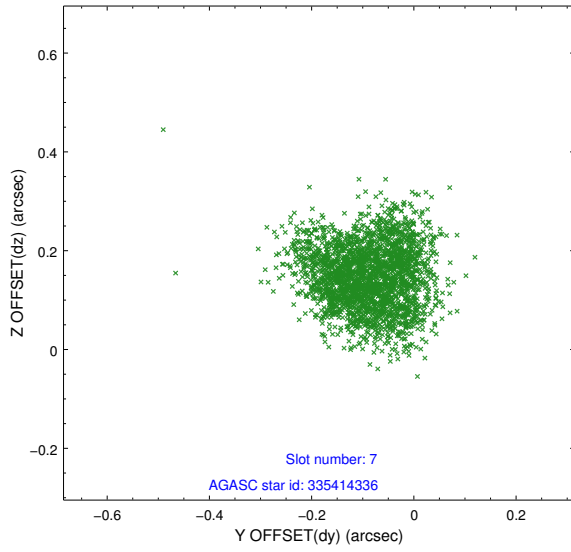
2.4.3 Slot 5



2.4.4 Slot 6

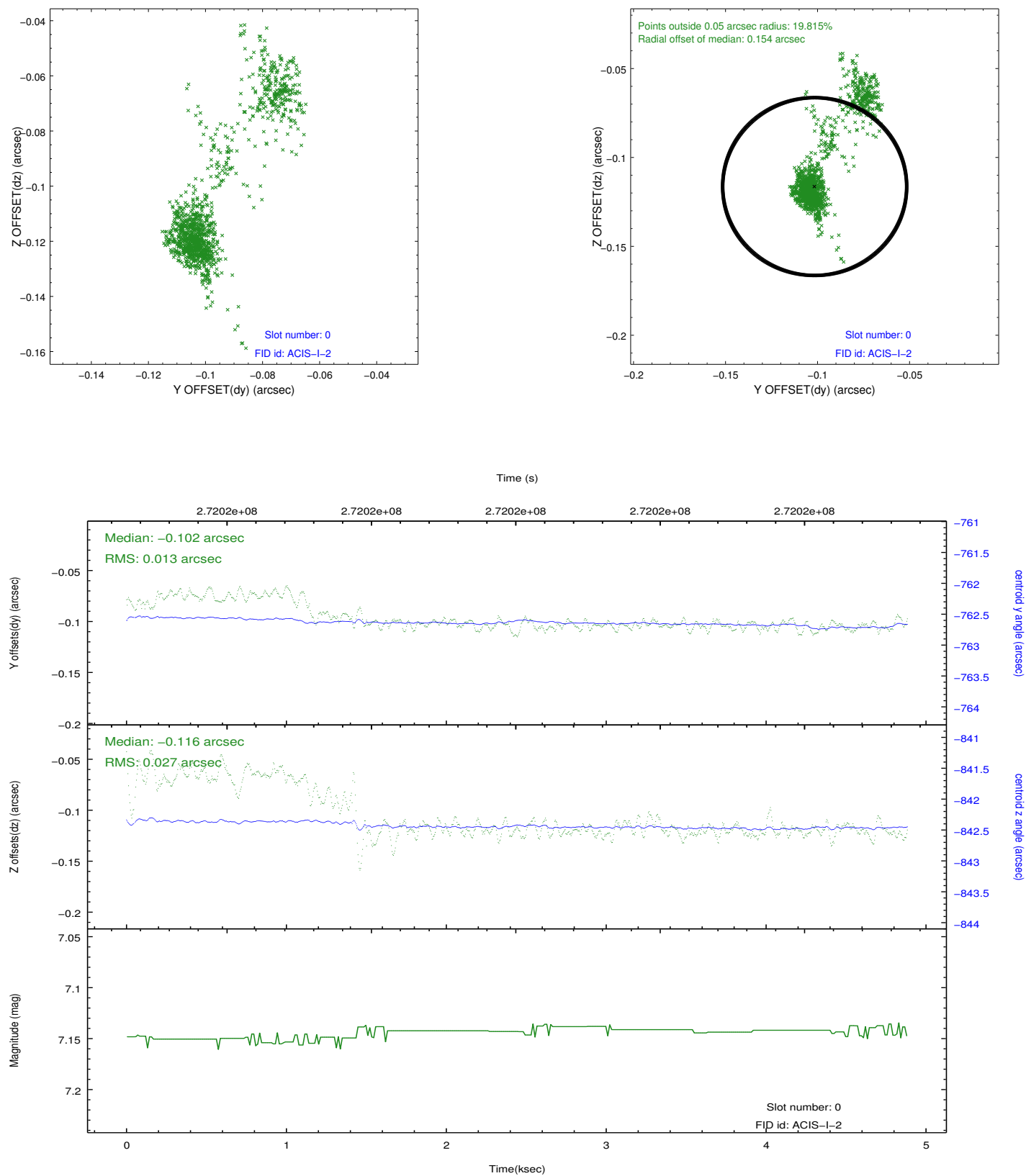


2.4.5 Slot 7

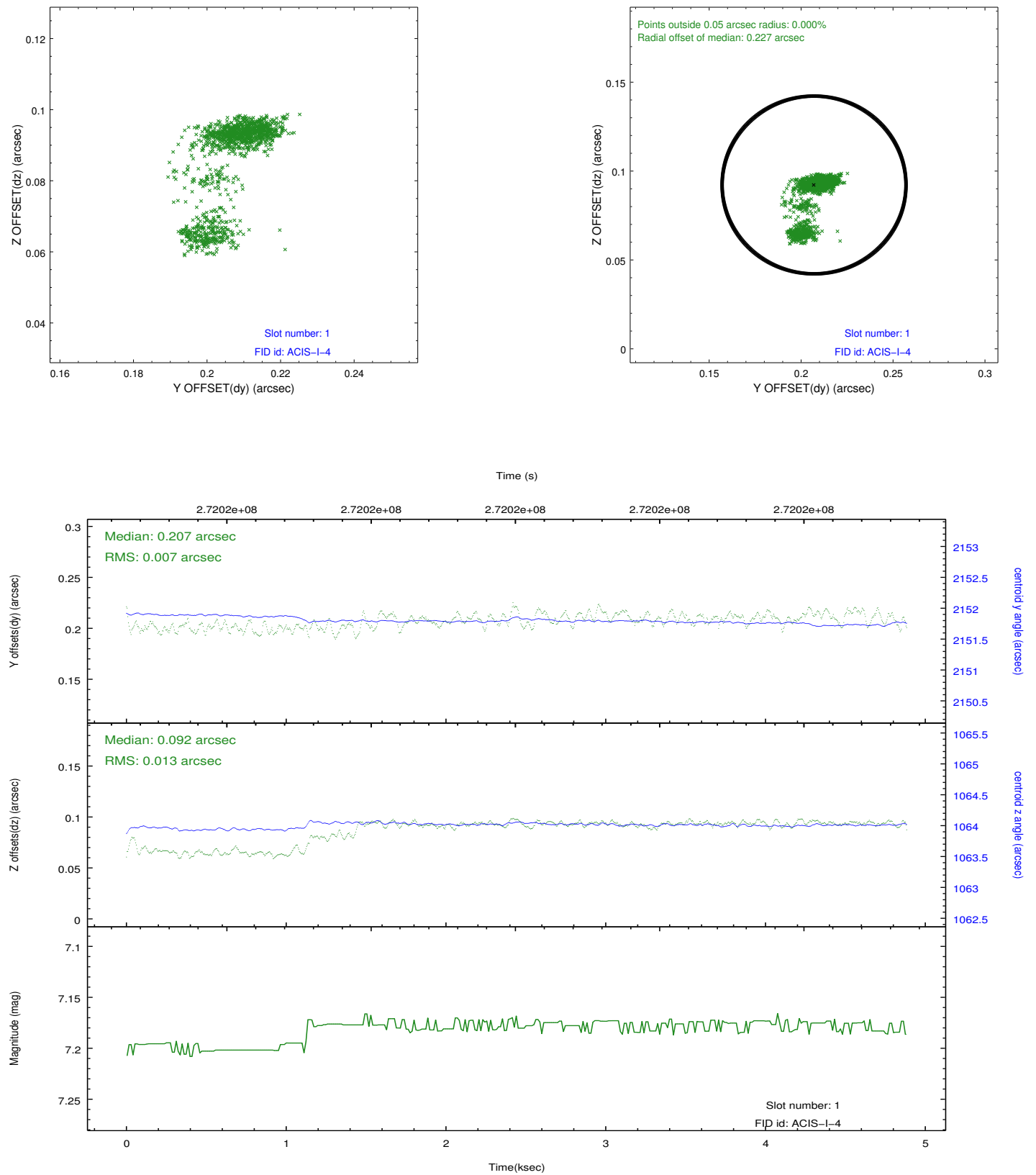


2.5 FID Slots

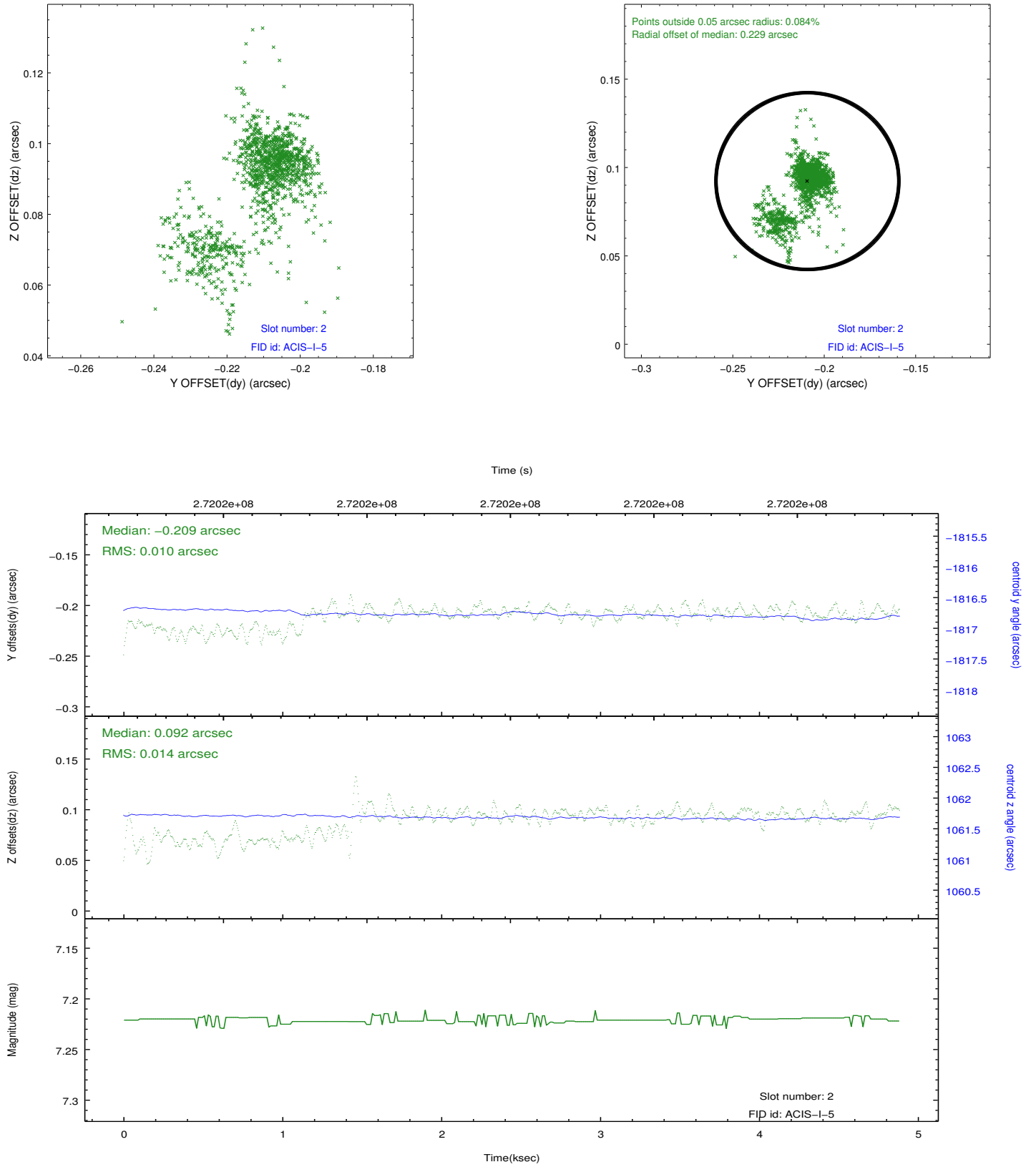
2.5.1 Slot 0



2.5.2 Slot 1



2.5.3 Slot 2



A Summary

A.1 Status

V&V Scientist	Jen Lauer
V&V Date (YYYY-MM-DD)	2012.04.08
V&V Edition	1
V&V Disposition and Status	OK
V&V Charge Time	4.47325906

A.2 Comments