

# V&V Reference Report

## L2 ASCDS Version : 7.6.7.1

Observation 6994 - L2 Version 002  
Chandra X-Ray Center

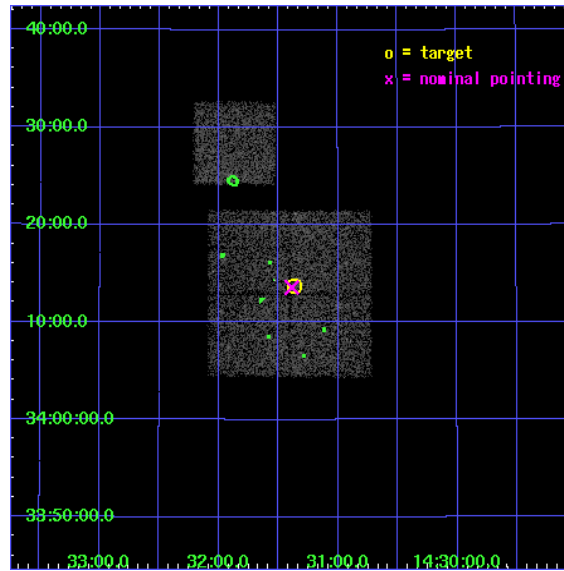
L2 Processing Date : Apr 4 2006

## Contents

<b>1</b>	<b>Front</b>	<b>2</b>
<b>2</b>	<b>OBI</b>	<b>3</b>
2.1	OBI . . . . .	3
2.1.1	Images . . . . .	3
2.1.2	Bias . . . . .	3
2.1.3	Parameters . . . . .	4
2.1.4	Events . . . . .	4
2.2	Compared Parameters . . . . .	5
2.3	Aspect . . . . .	6
2.4	Star Slots . . . . .	9
2.4.1	Slot 3 . . . . .	9
2.4.2	Slot 4 . . . . .	10
2.4.3	Slot 5 . . . . .	11
2.4.4	Slot 6 . . . . .	12
2.4.5	Slot 7 . . . . .	13
2.5	FID Slots . . . . .	14
2.5.1	Slot 0 . . . . .	14
2.5.2	Slot 1 . . . . .	15
2.5.3	Slot 2 . . . . .	16
<b>3</b>	<b>Point Sources</b>	<b>17</b>
<b>A</b>	<b>Summary</b>	<b>18</b>
A.1	Status . . . . .	18
A.2	Comments . . . . .	18

# 1 Front

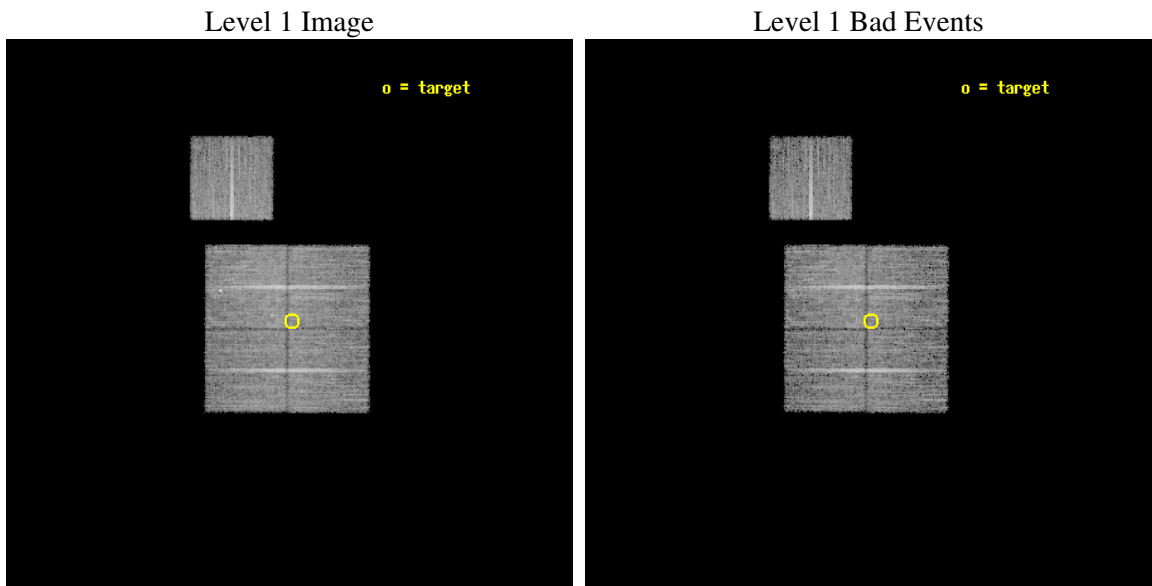
seq_num	900410
obs_id	6994
title	Chandra Large Scale Survey of the NOAO Bootes Deep Field (A)
observer	Dr. Stephen Murray
object	Bootes2 16
dtcycle	0
cycle	P
ra_targ	217.841792
dec_targ	34.228083
ra_nom	217.84689644447
dec_nom	34.226289210942
roll_nom	0.20578829177962
revision	2
ontime	10050.199980676
livetime	9918.8867190791
ontime0	10043.918020278
ontime1	10050.199980676
ontime2	10050.199980676
ontime3	10050.199980676
ontime6	10050.199980676
l2events	25513



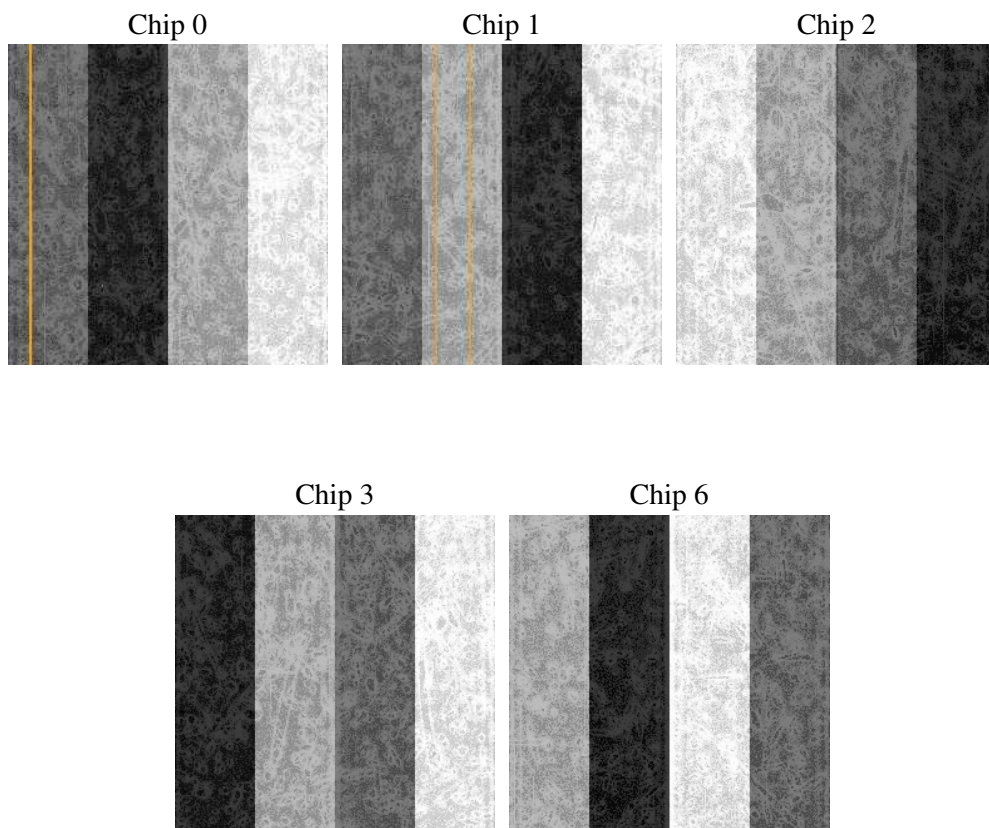
## 2 OBI

### 2.1 OBI

#### 2.1.1 Images



#### 2.1.2 Bias



### 2.1.3 Parameters

obi_num	0
ascdsver	7.6.7.1
caldsver	3.2.1
date	2006-04-04T12:41:24
revision	2

sched_exp_time	10000.000000
ontime	10054.345713973
ontime0	10048.063753575
ontime1	10054.345713973
ontime2	10054.345713973
ontime3	10054.345713973
ontime6	10054.345713973
l1events	314040

### 2.1.4 Events

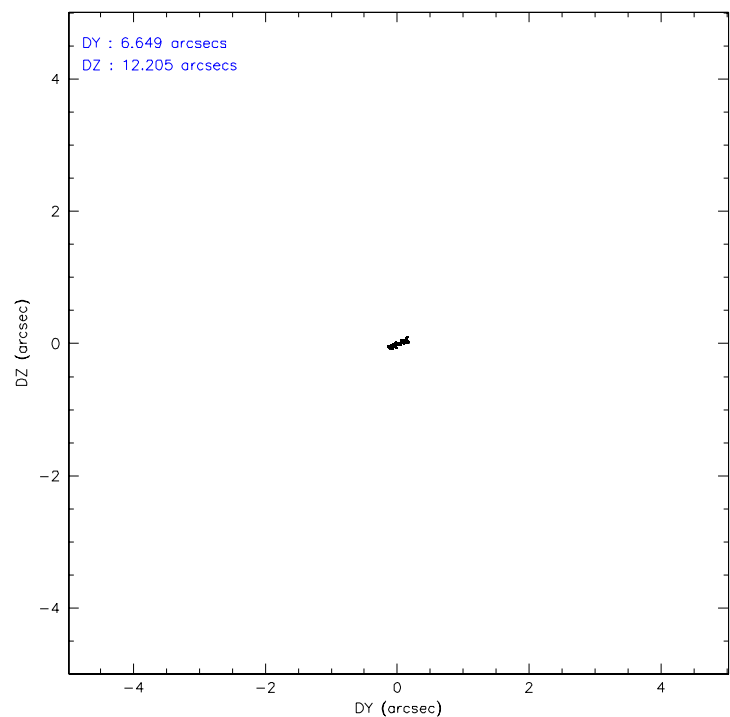
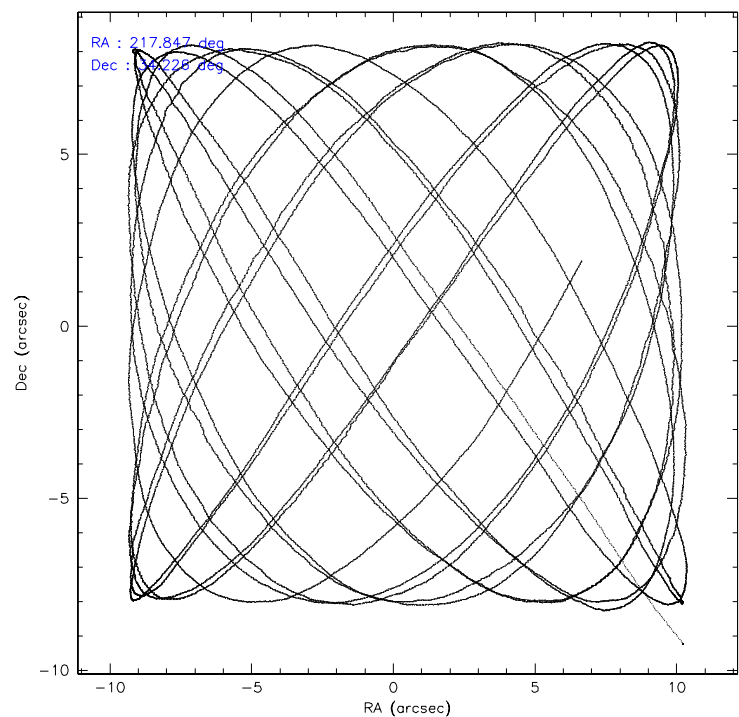
	ccd 0	ccd 1	ccd 2	ccd 3	ccd 6
level 1 events	57598	59373	71324	62489	63256
rejected events	51529	52842	64853	56905	56825
rejected %	89%	89%	90%	91%	89%

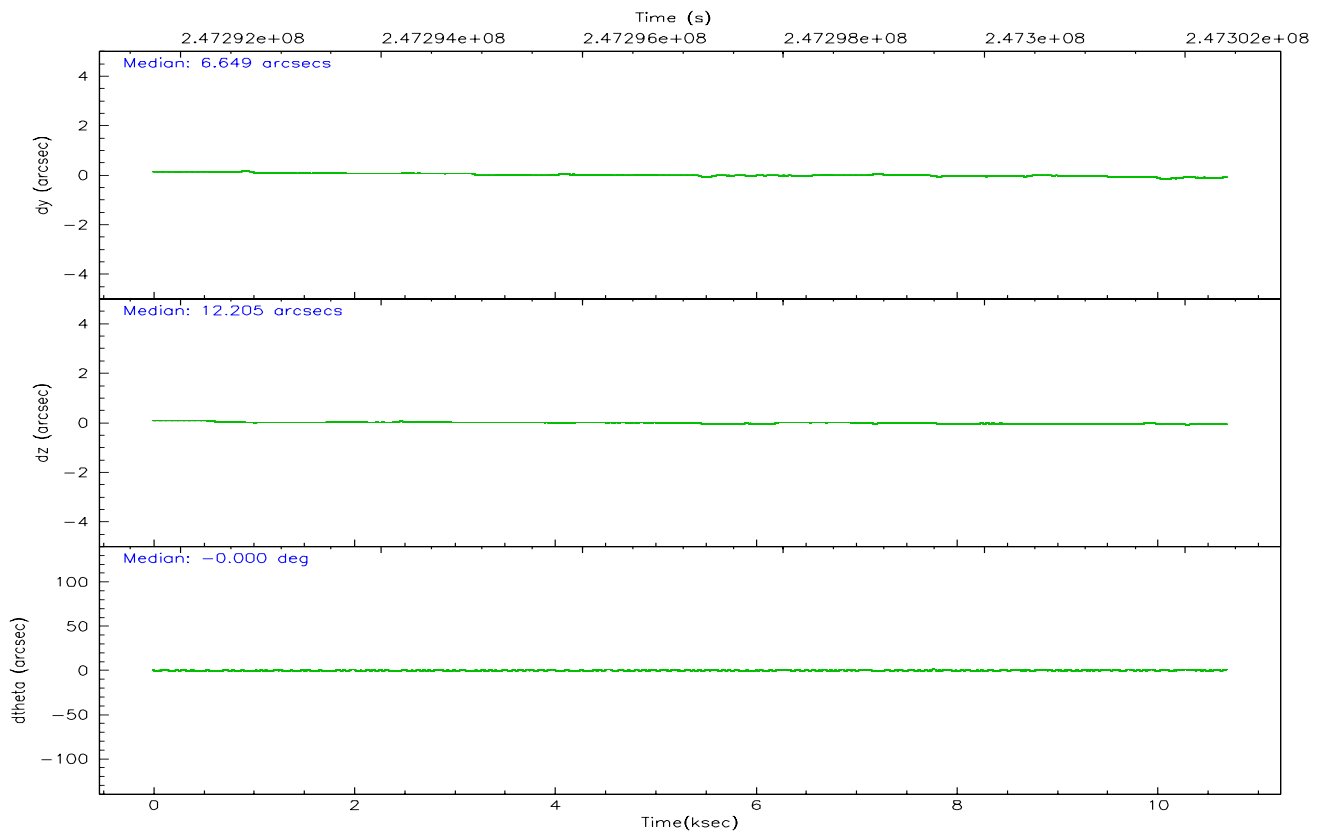
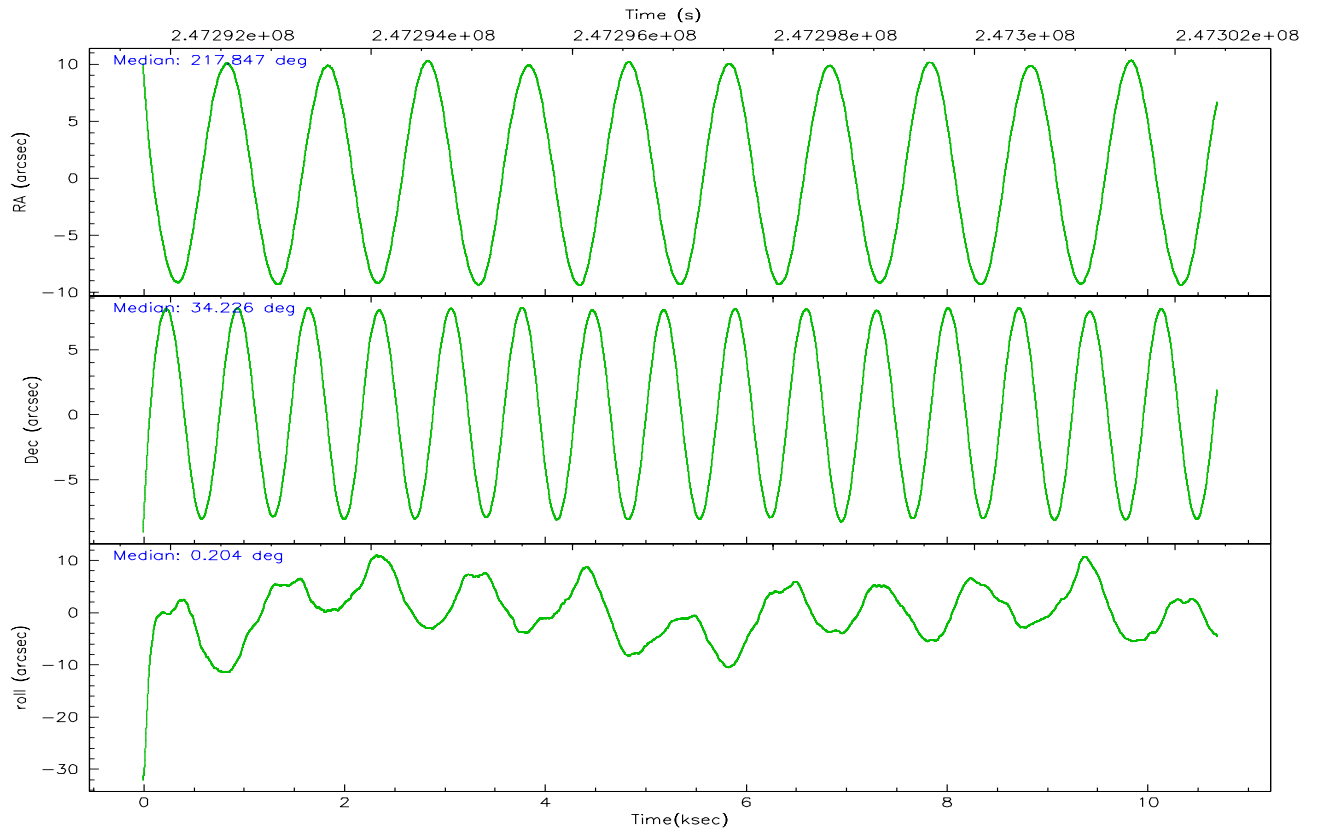
	ccd 0	ccd 1	ccd 2	ccd 3	ccd 6
grade 0 events	2175	2304	2703	2027	2365
	3%	3%	3%	3%	3%
grade 1 events	28	25	34	41	26
	0%	0%	0%	0%	0%
grade 2 events	1430	1415	1456	1207	1345
	2%	2%	2%	1%	2%
grade 3 events	685	807	643	640	682
	1%	1%	0%	1%	1%
grade 4 events	690	756	668	645	727
	1%	1%	0%	1%	1%
grade 5 events	1728	2016	1679	2199	2054
	3%	3%	2%	3%	3%
grade 6 events	1091	1252	1004	1071	1315
	1%	2%	1%	1%	2%
grade 7 events	49771	50798	63137	54659	54742
	86%	85%	88%	87%	86%

## 2.2 Compared Parameters

Parameter	Planned	Actual	Parameter	Planned	Actual
Instrument	ACIS	ACIS	Obspar format version number	6	6
Detector	ACIS-01236	ACIS-01236	Obspar file type	PREDICTED	ACTUAL
Grating	NONE	NONE	Obspar update status	NONE	UPDATED
Data mode	VFAINT	VFAINT	On-chip summing requested	N	N
Observation mode	POINTING	POINTING	Subarray requested	NONE	NONE
Pointing RA	217.818426	217.846896444469	Alternating exposures requested	N	N
Pointing Dec	34.212421	34.22628921094164	Primary exposure time	0.000000	3.1
Pointing Roll	0.013144	0.205788291779621			
SIM focus pos (mm)	-0.782348	-0.7809083437167272			
SIM defocus (mm)	0	0.001439871863259334			
SIM translation stage pos (mm)	-233.592463	-233.5874344608287			
SIM translation stage offset (mm)	0	-0.005018542100998502			
Observation start time	247292418.184000	247291233.5145			
Observation start date	2005-11-02T04:19:14	2005-11-02T04:00:33			
Observation end time	247302418.184000	247303487.39007			
Observation end date	2005-11-02T07:05:54	2005-11-02T07:24:47			
Read mode	TIMED	TIMED			

### 2.3 Aspect



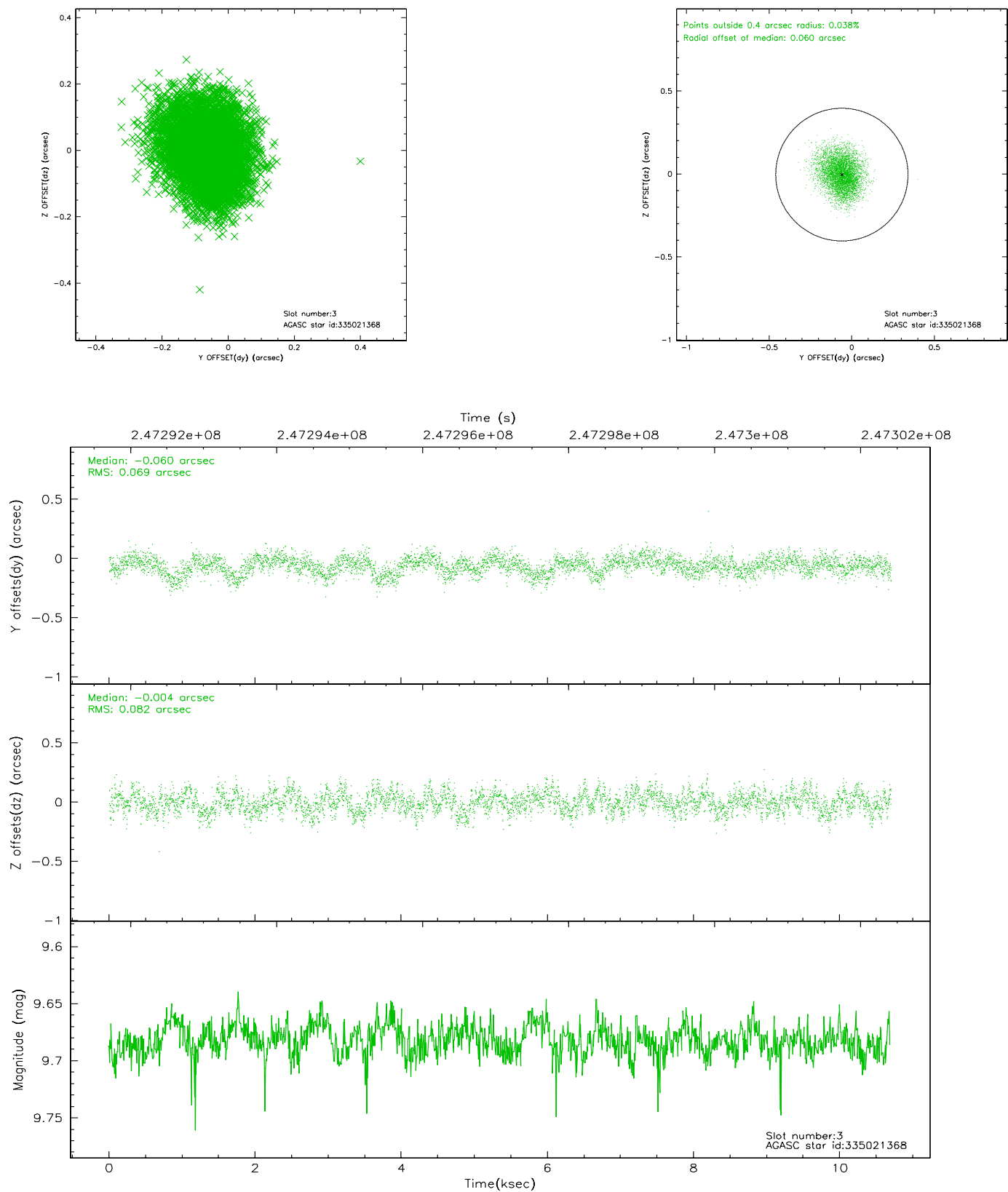


### Slot Statistics

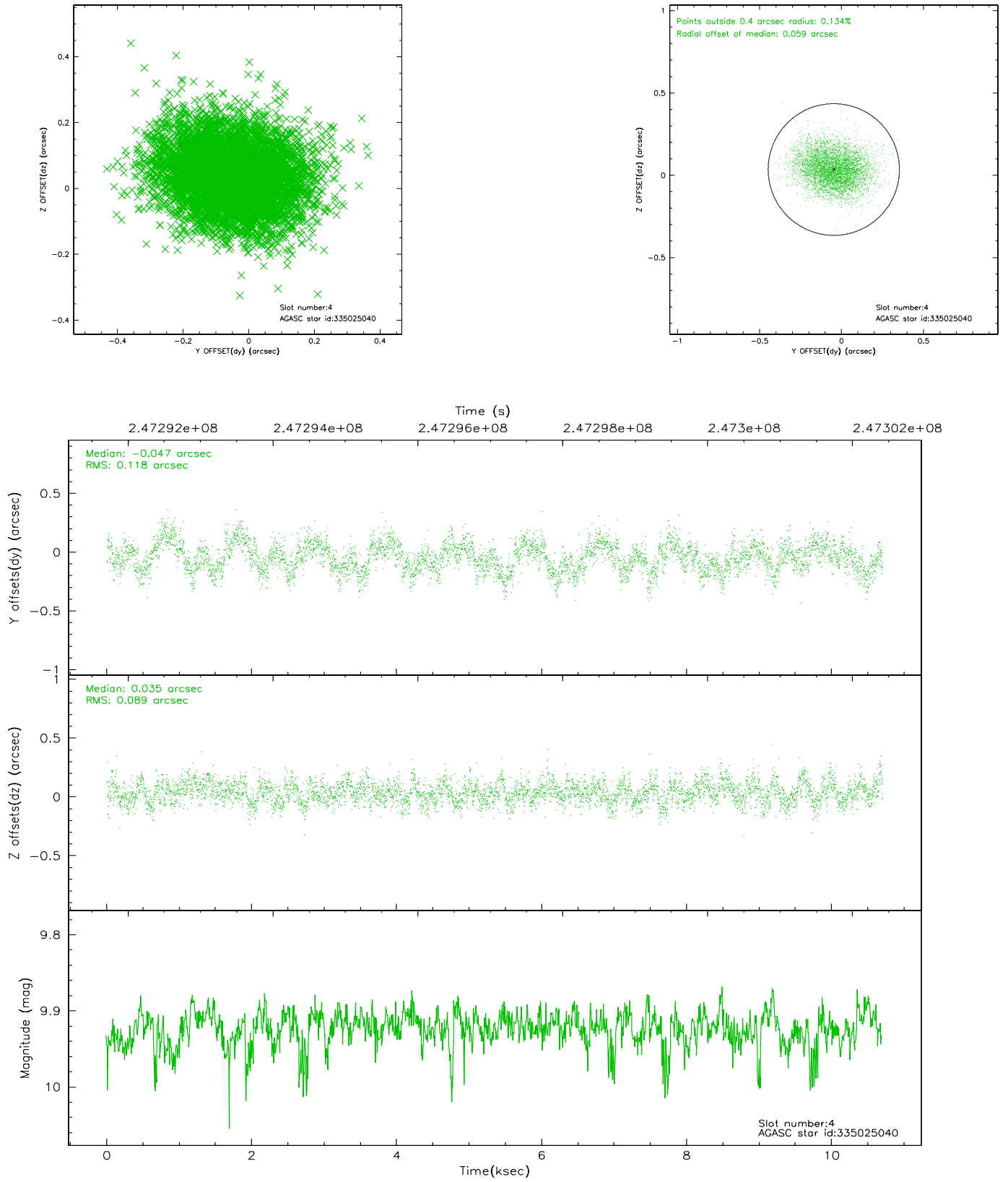
slot	status	id	mag	n_pts	med_dy	med_dz	dr1	dr2	ra	dec	mean_y	mean_z
0	FID	ACIS-I-1	7.24	2610	0.026	0.020	0.006	0.010	0.000000	0.000000	933.03	-835.74
1	FID	ACIS-I-5	7.22	2610	-0.128	0.059	0.006	0.010	0.000000	0.000000	-1814.91	1061.62
2	FID	ACIS-I-6	7.25	2610	0.011	-0.009	0.007	0.011	0.000000	0.000000	398.10	1706.55
3	GUIDE	335021368	9.68	5213	-0.060	-0.004	0.114	0.183	217.529643	33.934817	-862.24	-997.80
4	GUIDE	335025040	9.92	5215	-0.047	0.035	0.157	0.253	218.601670	34.305240	2329.60	342.68
5	GUIDE	335025848	9.73	5210	0.174	0.147	0.125	0.196	217.530531	33.778292	-860.61	-1561.09
6	GUIDE	335028336	9.46	5183	0.143	-0.123	0.109	0.184	217.189840	34.665629	-1860.35	1637.51
7	GUIDE	335028696	9.14	5210	-0.207	-0.058	0.089	0.141	217.260519	33.844112	-1668.42	-1320.61

## 2.4 Star Slots

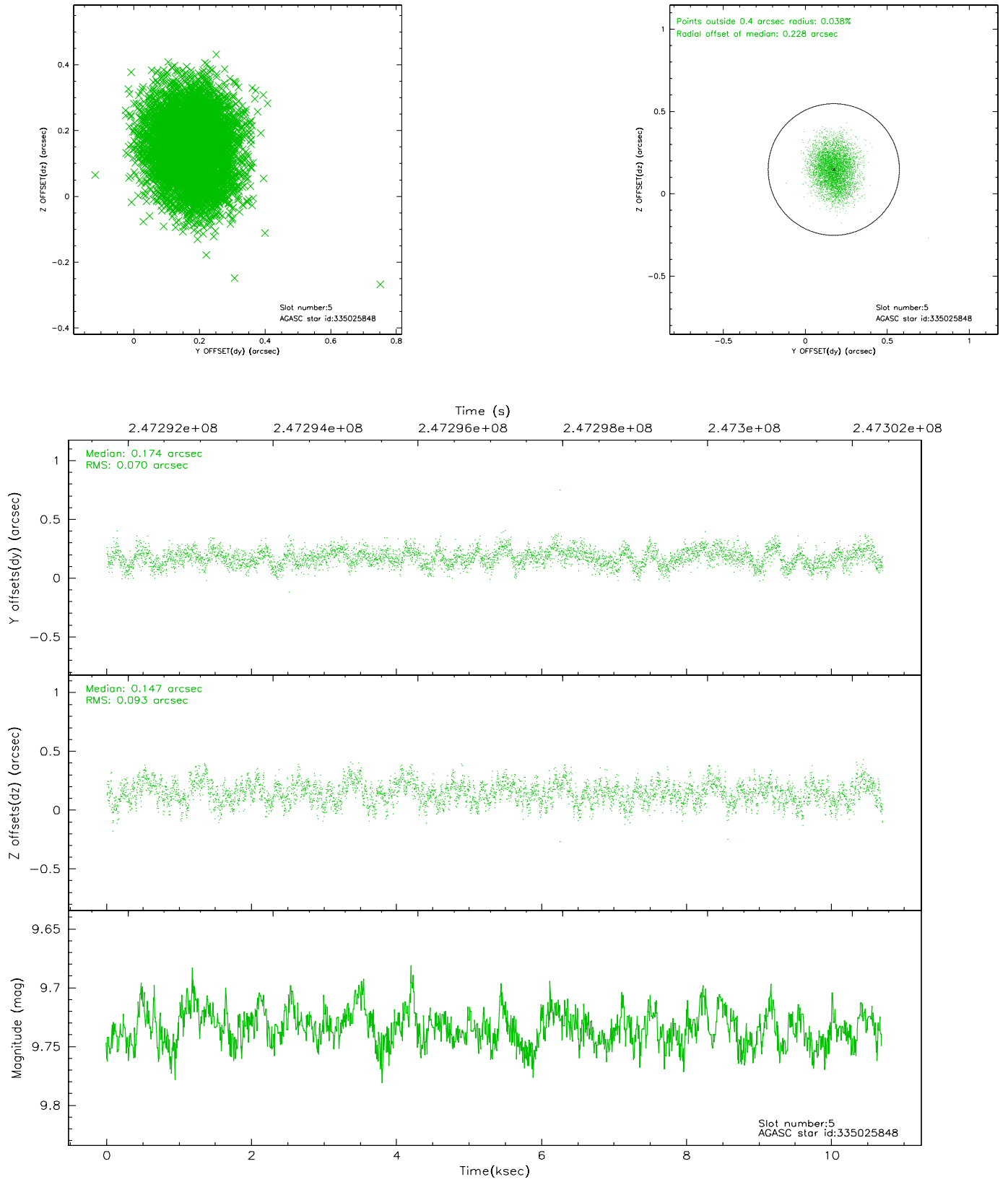
### 2.4.1 Slot 3



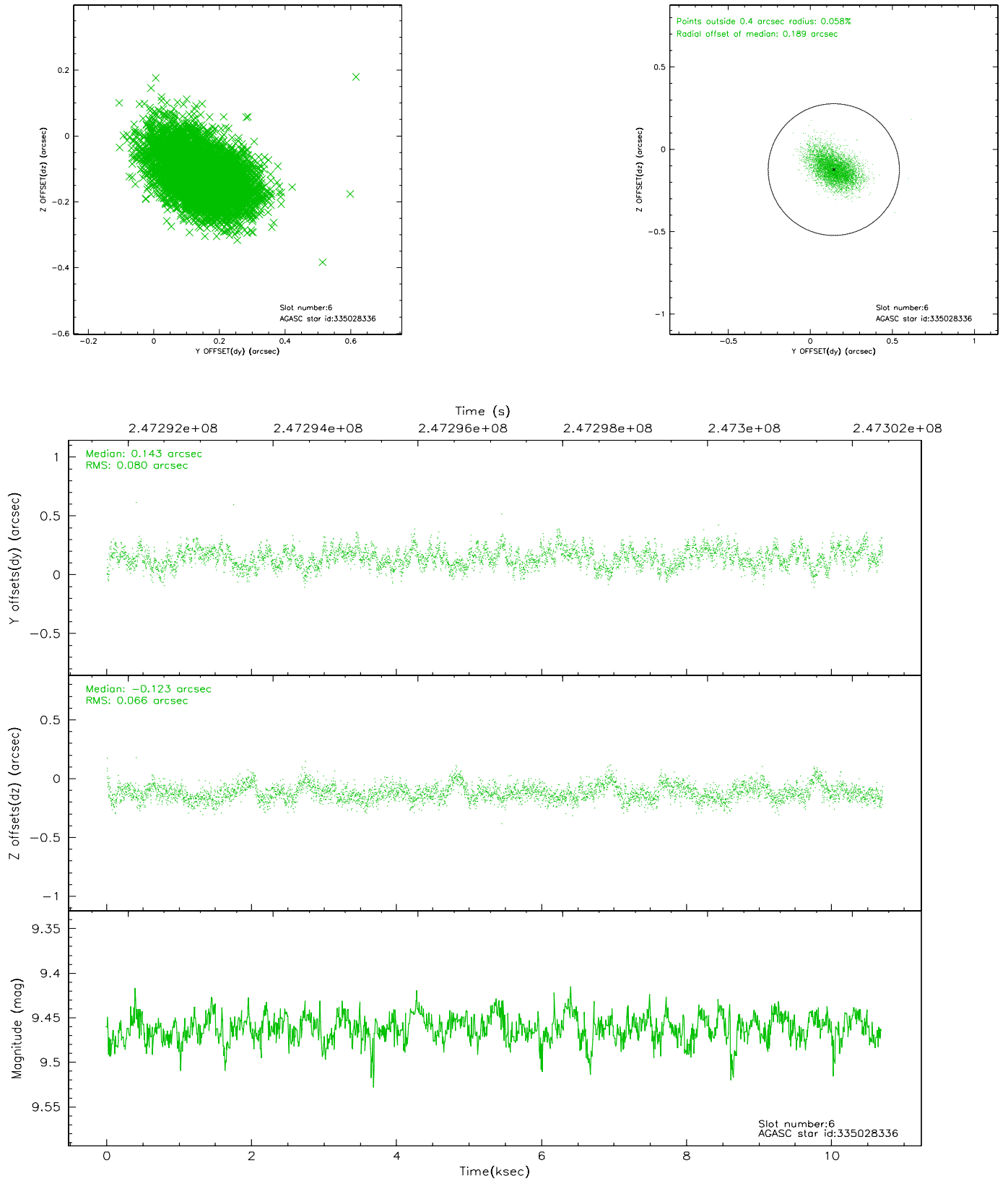
## 2.4.2 Slot 4



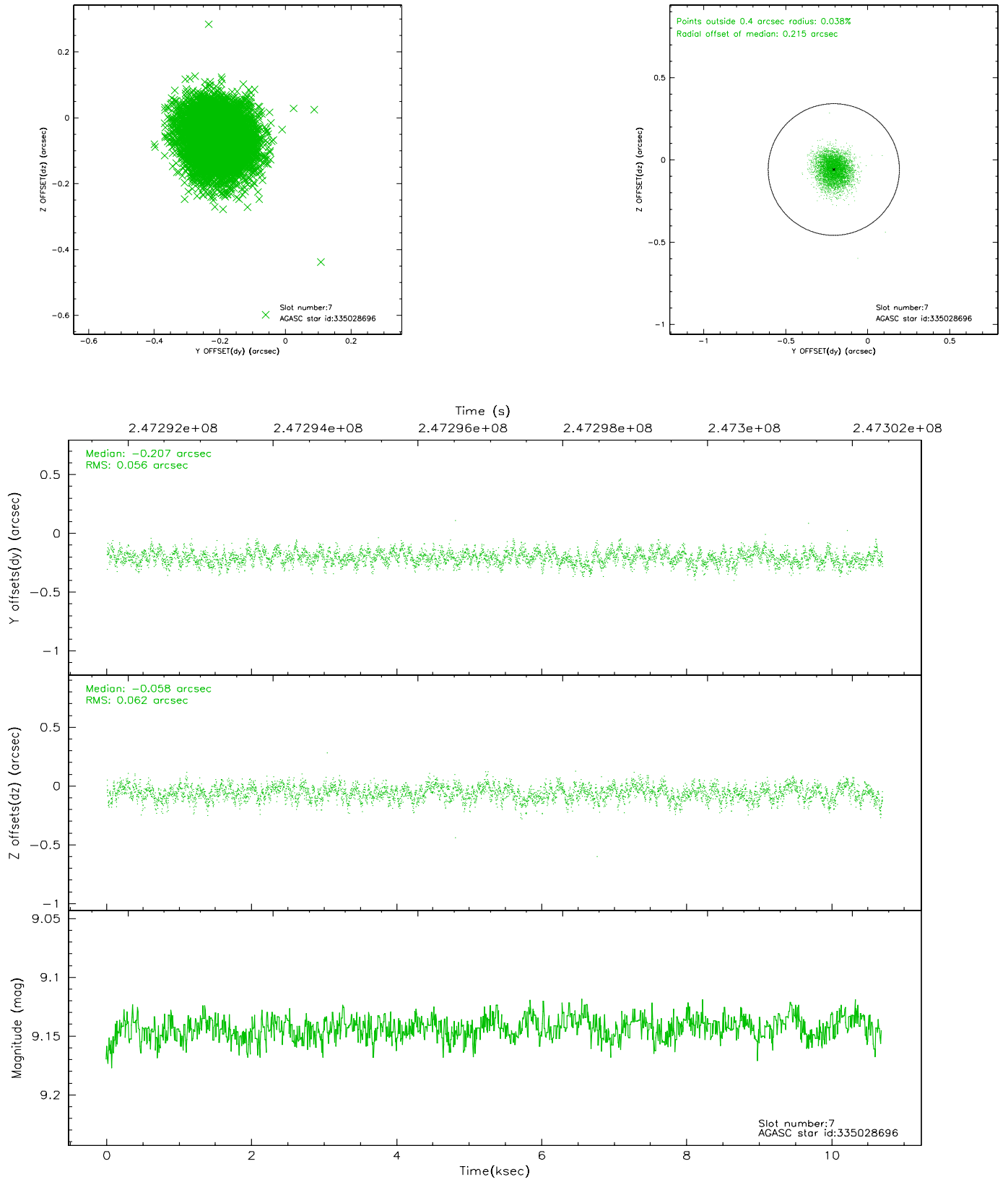
### 2.4.3 Slot 5



## 2.4.4 Slot 6

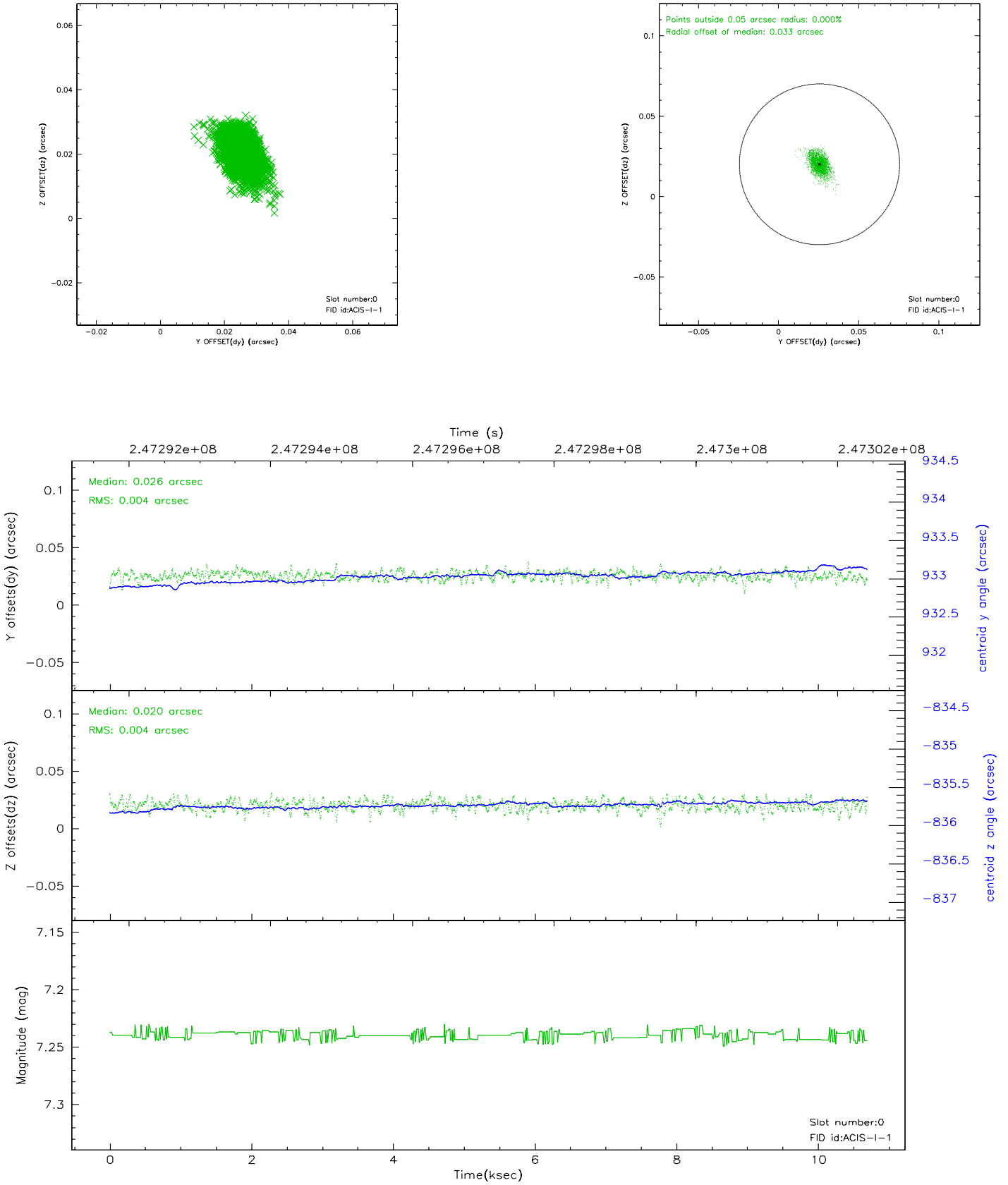


## 2.4.5 Slot 7

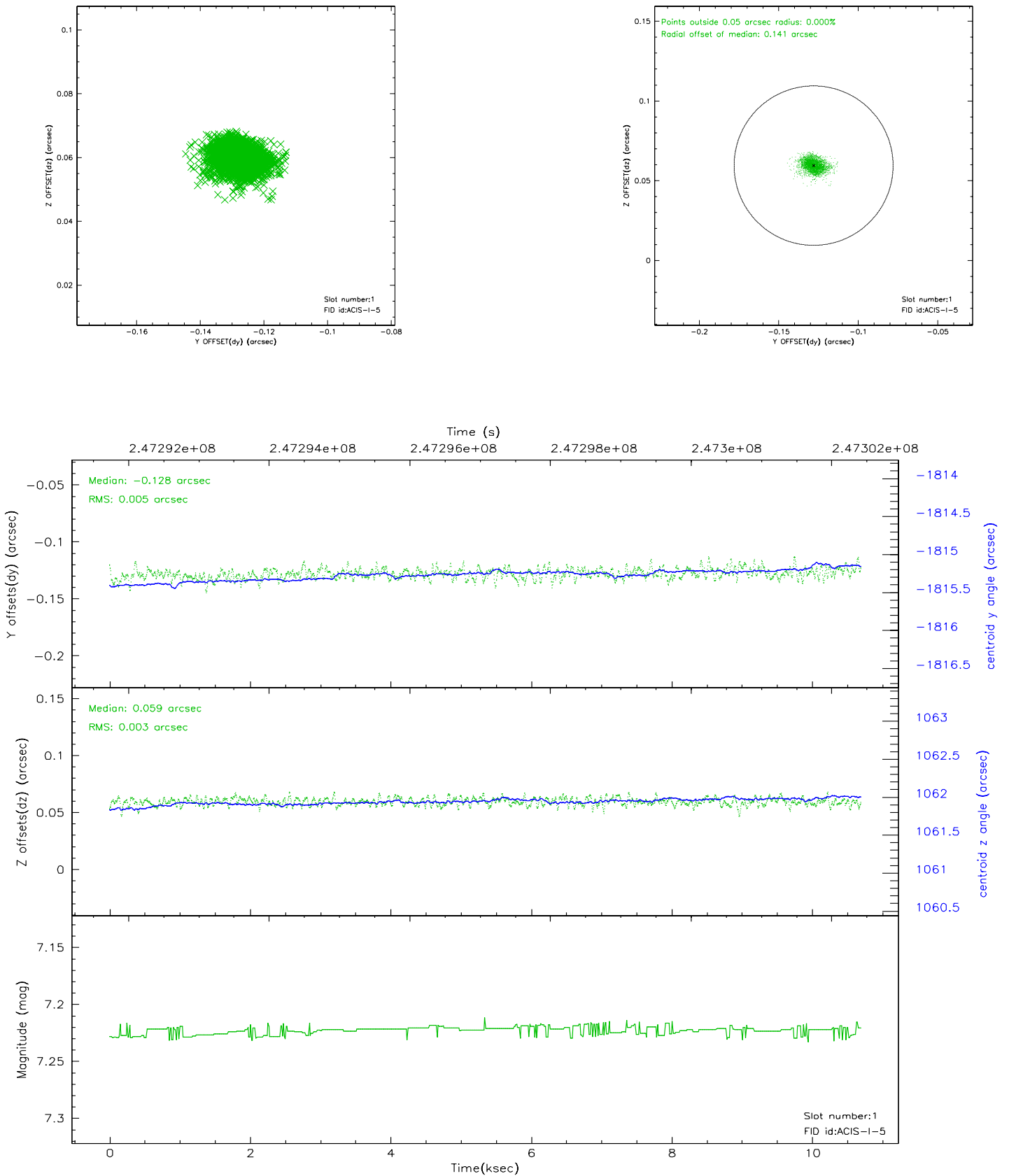


## 2.5 FID Slots

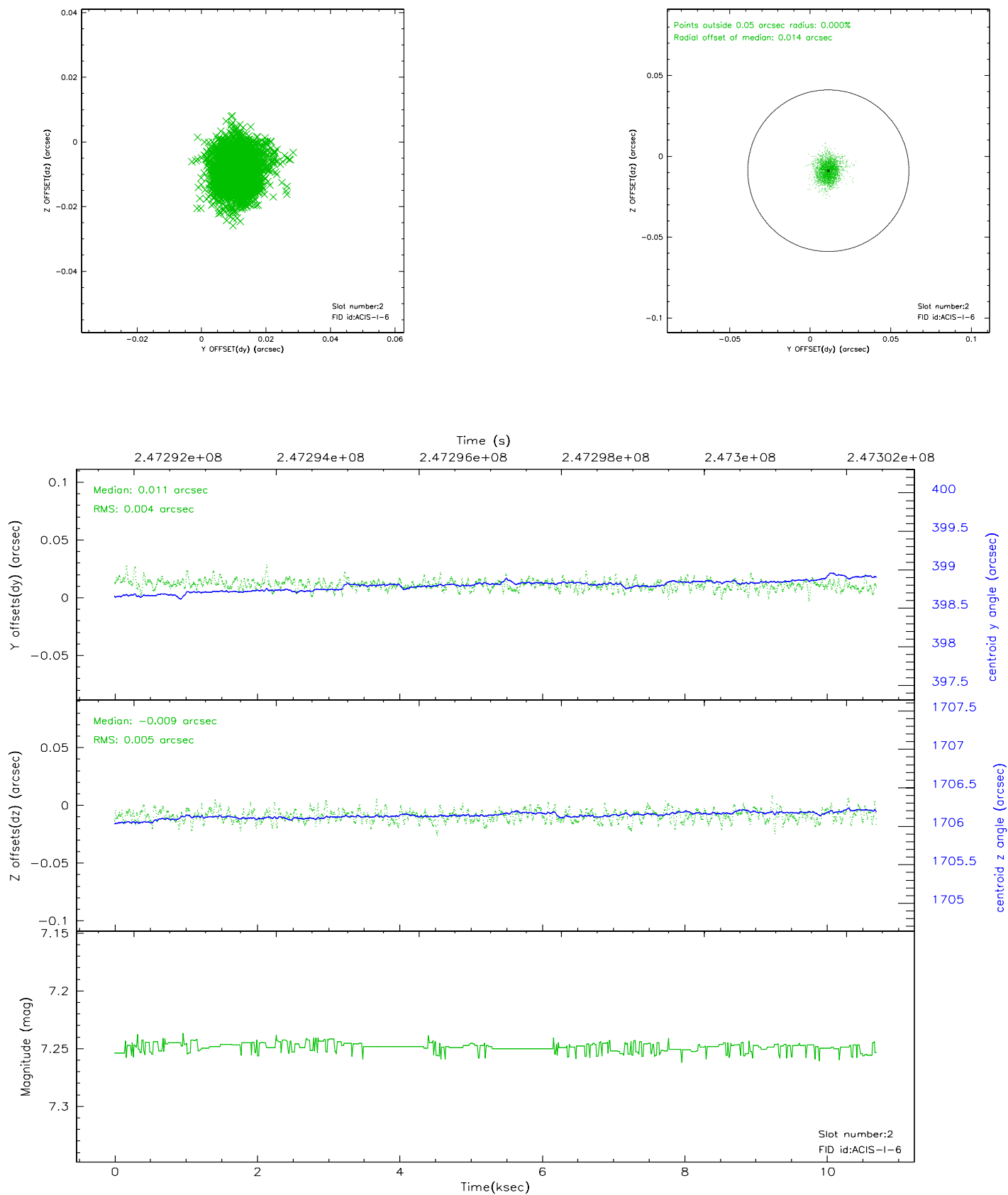
### 2.5.1 Slot 0



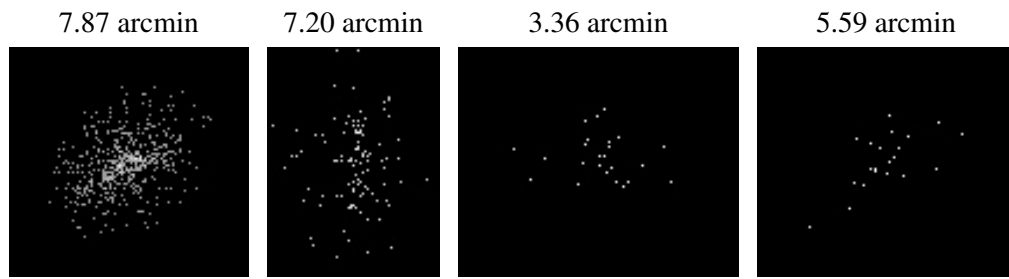
## 2.5.2 Slot 1



### 2.5.3 Slot 2



### 3 Point Sources



## A Summary

### A.1 Status

V&V Scientist	Jen Lauer
V&V Date (YYYY-MM-DD)	2006.04.04
V&V Edition	1
V&V Disposition and Status	OK
V&V Charge Time	10.05019

### A.2 Comments