

V&V Reference Report

L2 ASCDS Version : 8.4.3.1

Observation 6784 - L2 Version 2
Chandra X-Ray Center

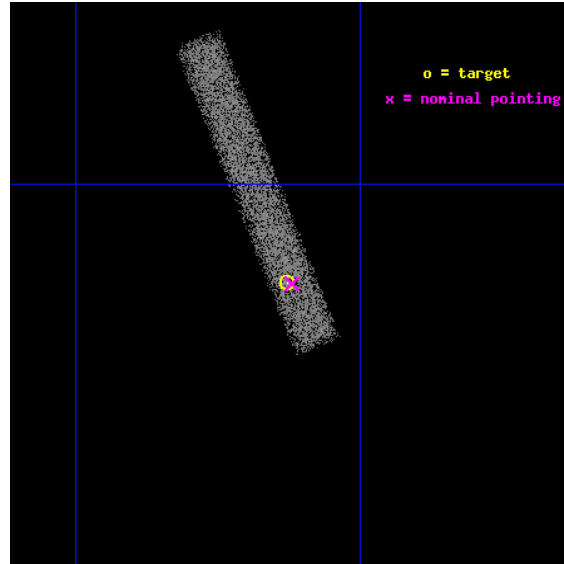
L2 Processing Date : Apr 4 2012

Contents

1	Front	2
2	OBI	3
2.1	OBI	3
2.1.1	Images	3
2.1.2	Bias	3
2.1.3	Parameters	4
2.1.4	Events	4
2.2	Compared Parameters	5
2.3	Aspect	6
2.4	Star Slots	9
2.4.1	Slot 3	9
2.4.2	Slot 4	10
2.4.3	Slot 5	11
2.4.4	Slot 6	12
2.4.5	Slot 7	13
2.5	FID Slots	14
2.5.1	Slot 0	14
2.5.2	Slot 1	15
2.5.3	Slot 2	16
A	Summary	17
A.1	Status	17
A.2	Comments	17

1 Front

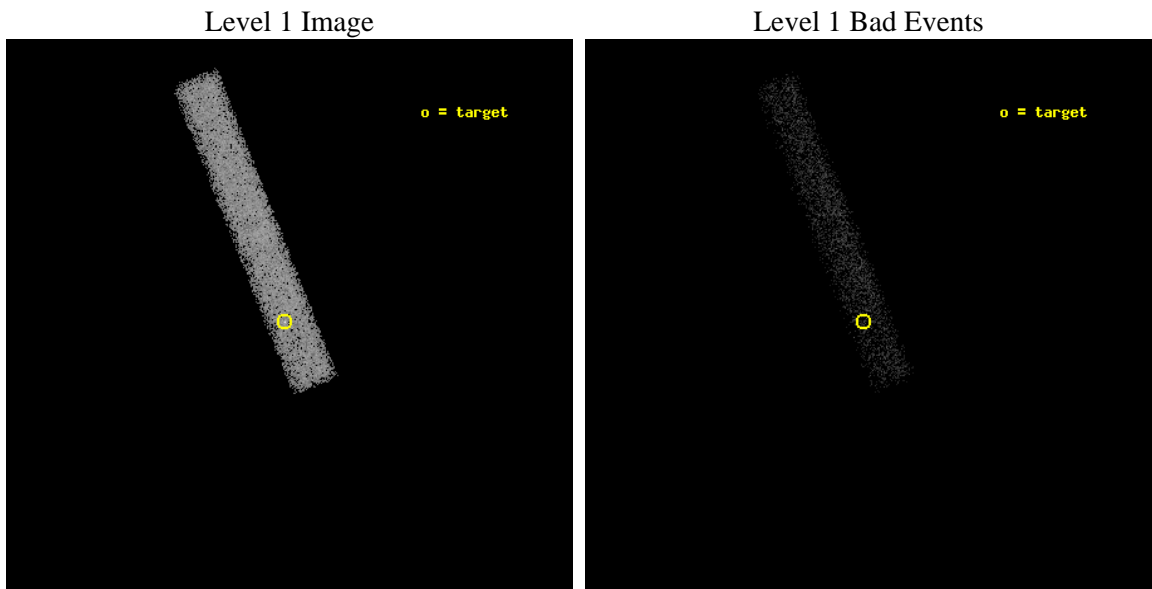
seq_num	701202	Sequence number
obs_id	6784	Observation id
title	Active Galactic Nuclei in nearby galaxies: a new view of the origin of the radio-loud radio-quiet dichotomy?	Proposal title
observer	Dr. Alessandro Capetti	Principal investigator
object	UGC7311	Source name
dtcycle	0	
cycle	P	events from which exps? Prim/Second/Both
ra_targ	184.282083	Observer's specified target RA [deg]
dec_targ	7.624444	Observer's specified target Dec [deg]
ra_nom	184.28006156316	Nominal RA [deg]
dec_nom	7.6238998179866	Nominal Dec [deg]
roll_nom	248.31442289603	Nominal Roll [deg]
revision	2	Processing version of data
ontime	15075.576621979	Sum of GTIs [s]
livetime	13672.752241955	Livetime [s]
ontime7	15075.576621979	Sum of GTIs [s]
l2events	12270	Number of level 2 events



2 OBI

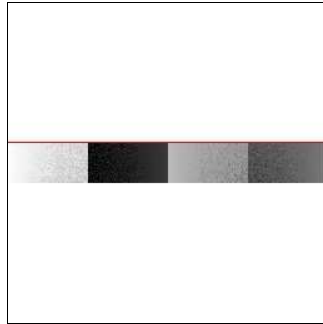
2.1 OBI

2.1.1 Images



2.1.2 Bias

Chip 7



2.1.3 Parameters

obi_num	0	Obi number	sched_exp_time	15065.680000	[s] Scheduled observation exposure time
ascdsver	8.4.3.1	Processing system revision	ontime	15075.576621979	Sum of GTIs [s]
caldsver	4.4.9	 	ontime7	15075.576621979	Sum of GTIs [s]
date	2012-04-04T19:57:58	Date and time of file creation	l1events	25821	Number of level 1 events
revision	2	Processing version of data			

2.1.4 Events

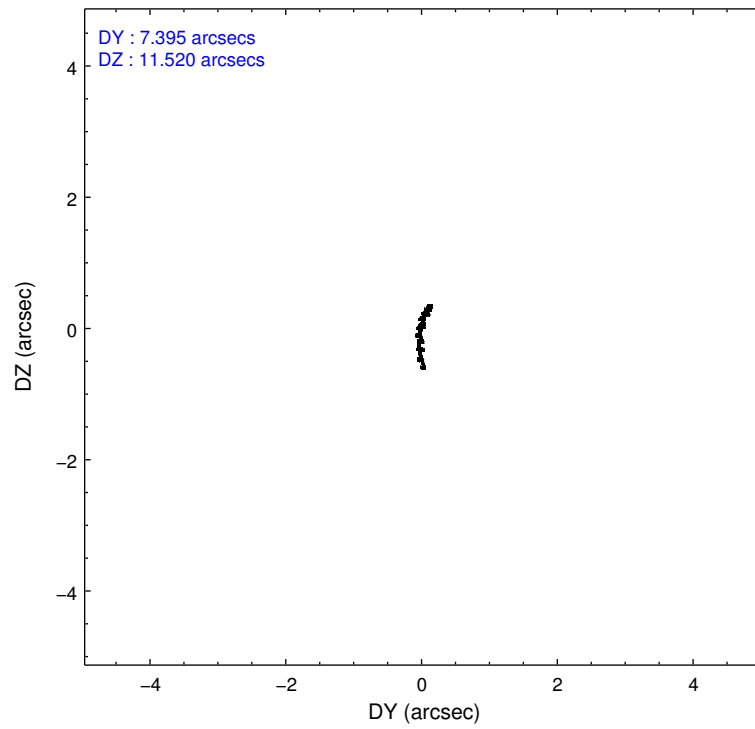
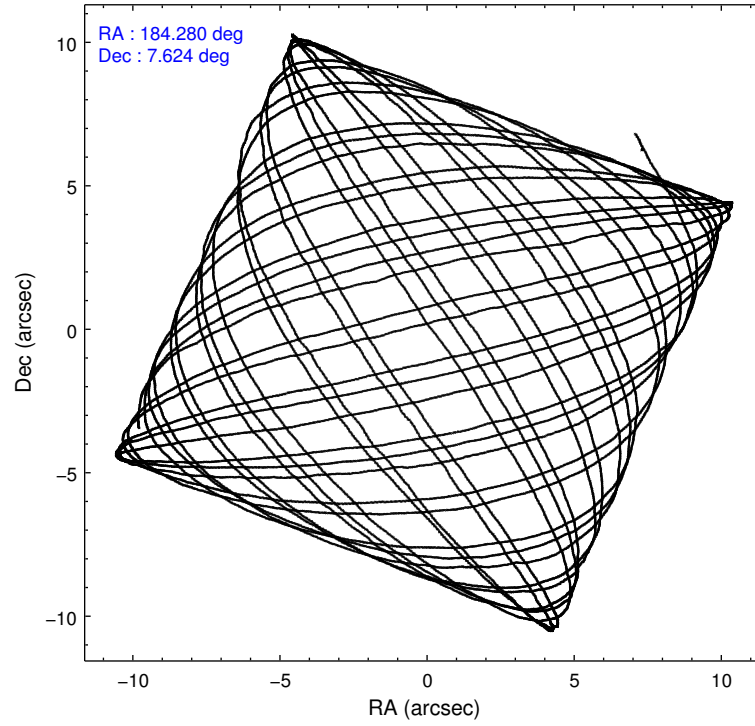
	ccd 7
level 1 events	25821
rejected events	13033
rejected %	50%

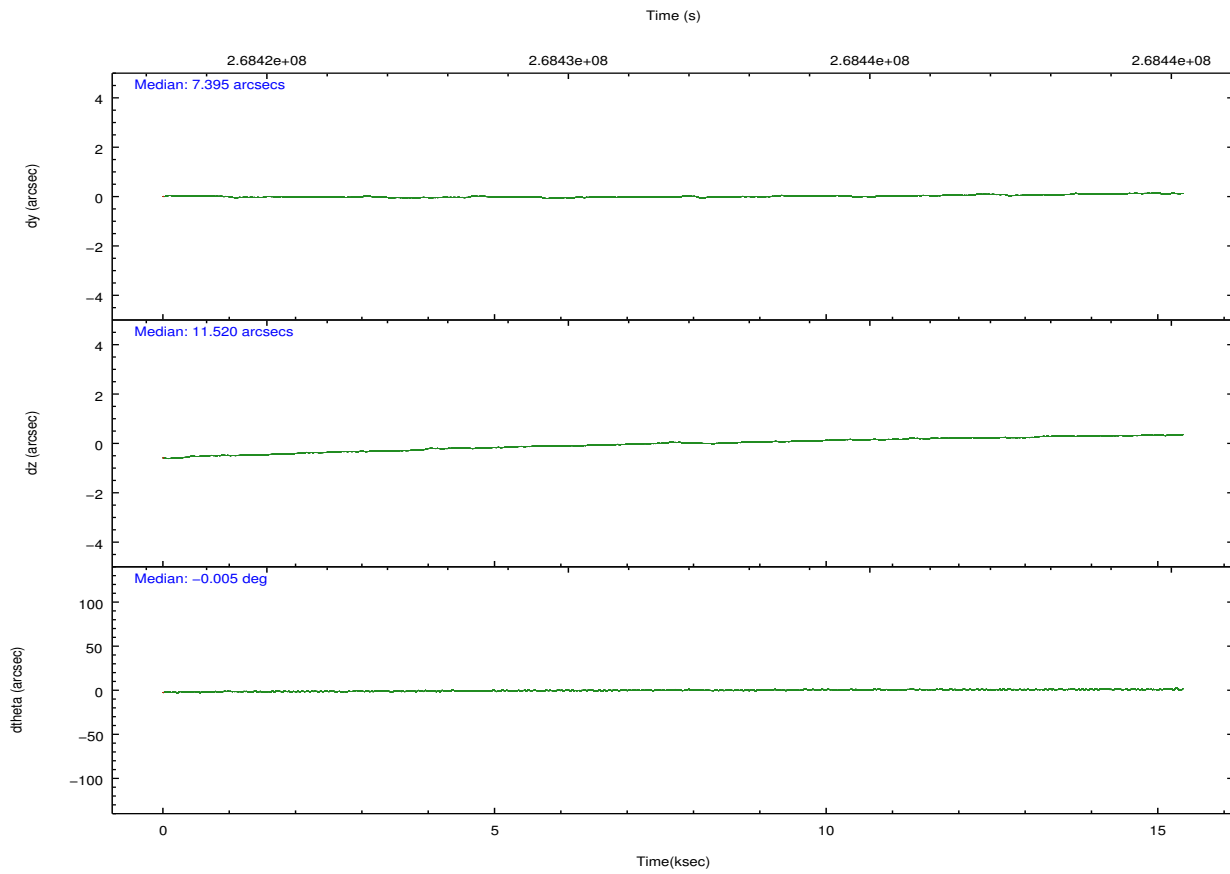
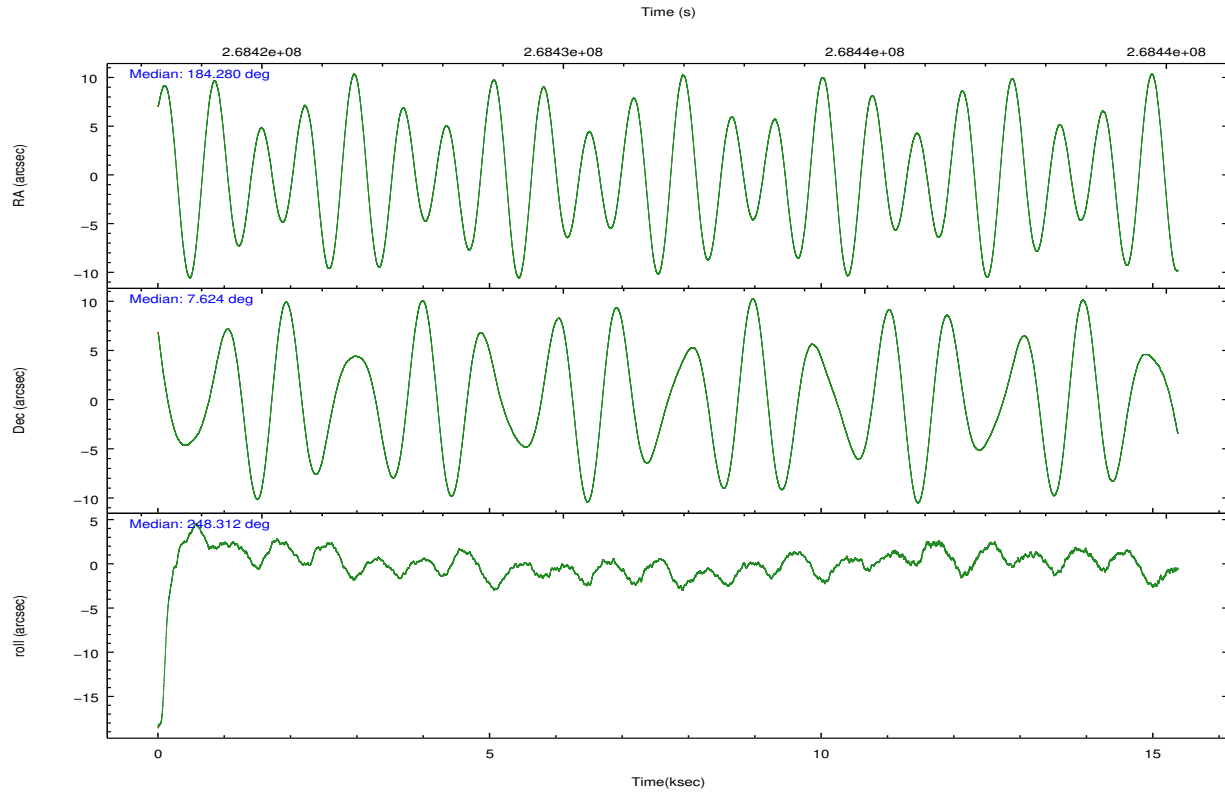
	ccd 7
grade 0 events	1316
	5%
grade 1 events	29
	0%
grade 2 events	2327
	9%
grade 3 events	1565
	6%
grade 4 events	1489
	5%
grade 5 events	2287
	8%
grade 6 events	6092
	23%
grade 7 events	10716
	41%

2.2 Compared Parameters

Parameter	Planned	Actual	Parameter	Planned	Actual
Instrument	ACIS	ACIS	Obspar format version number	7	7
Detector	ACIS-7	ACIS-7	Obspar file type	PREDICTED	ACTUAL
Grating	NONE	NONE	Obspar update status	NONE	UPDATED
Data mode	VFAINT	VFAINT	Number of optional ACIS chips dropped	0	0
Observation mode	POINTING	POINTING	On-chip summing requested	N	N
[deg] Pointing RA	184.275712	184.2800615631562	Subarray requested	CUSTOM	1/8
[deg] Pointing Dec	7.650796	7.623899817986615	Subarray start row	449	449
[deg] Pointing Roll	248.158369	248.3144228960326	Subarray row count	128	128
[mm] SIM focus pos	-0.684267	-0.6828225247311905	Alternating exposures requested	N	N
[mm] SIM defocus	0	0.001444936568705701	[s] Primary exposure time	0.000000	0.4
[mm] SIM translation stage pos	-190.132523	-190.1400660498719			
[mm] SIM translation stage offset	0	0.00754346686406393			
[s] Observation start time (MET)	268424362.184000	268423764.55926			
Observation start date	2006-07-04T18:18:17	2006-07-04T18:09:24			
[s] Observation end time (MET)	268439428.184000	268439642.835			
Observation end date	2006-07-04T22:29:23	2006-07-04T22:34:02			
Read mode	TIMED	TIMED			

2.3 Aspect



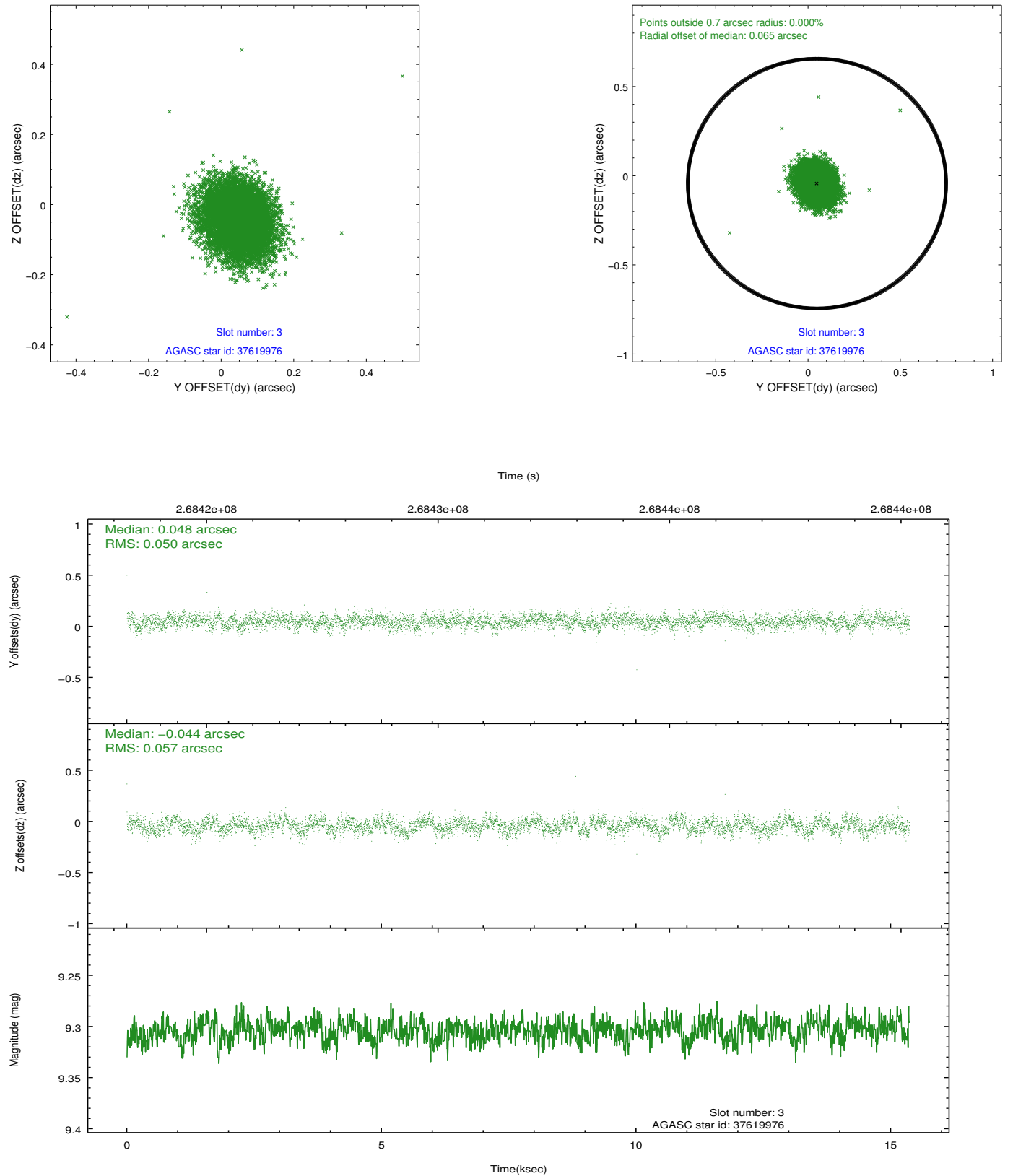


Slot Statistics

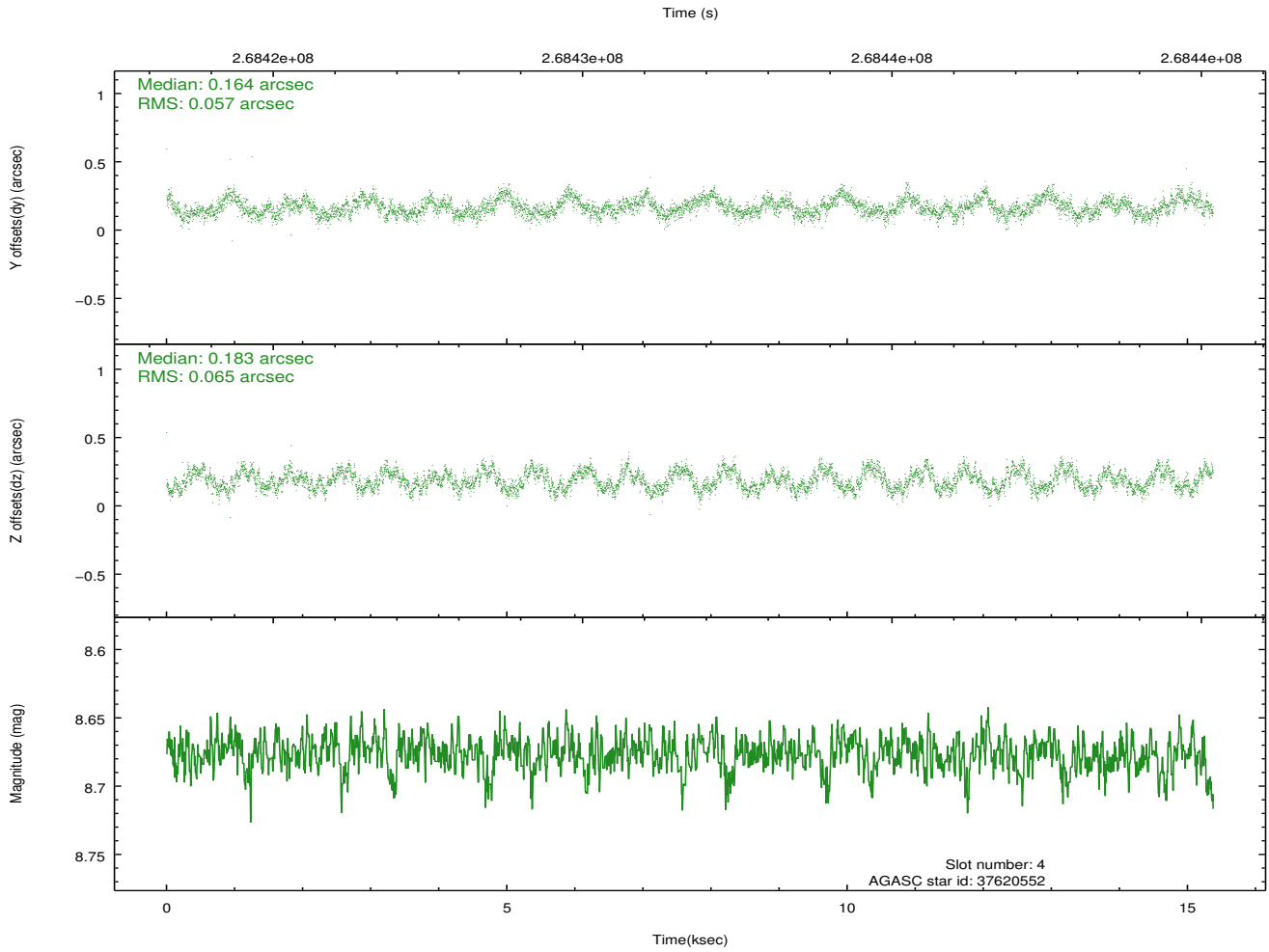
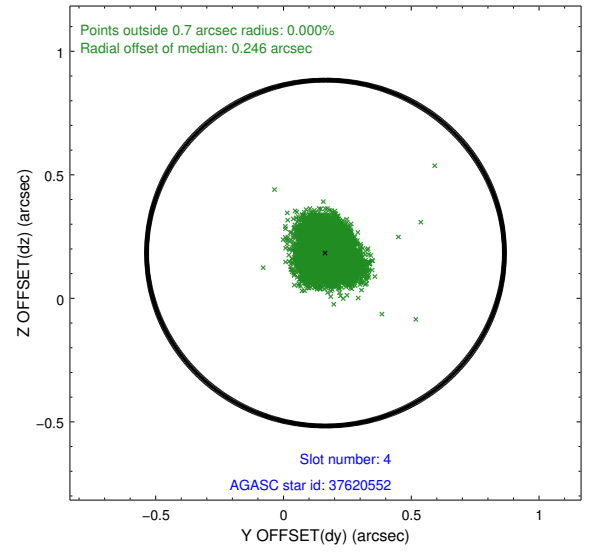
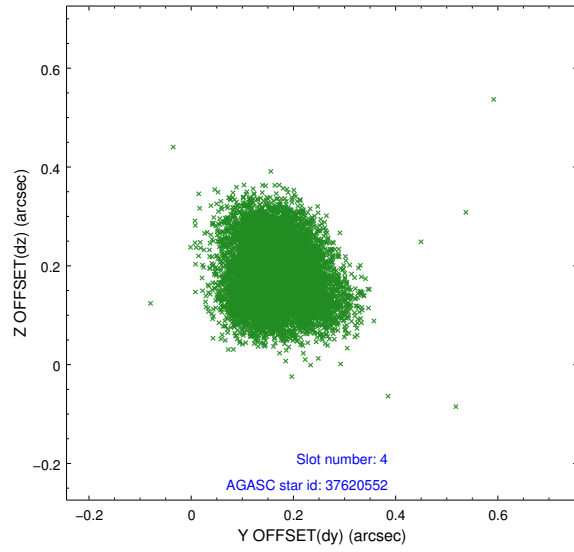
slot	status	id	mag	n_pts	med_dy	med_dz	dr1	dr2	ra	dec	mean_y	mean_z
0	FID	ACIS-S-2	7.10	3751	-0.035	-0.021	0.011	0.016	0.000000	0.000000	-760.19	-1732.79
1	FID	ACIS-S-4	7.21	3751	0.093	0.023	0.007	0.011	0.000000	0.000000	2153.07	175.46
2	FID	ACIS-S-5	7.24	3750	-0.089	0.007	0.010	0.018	0.000000	0.000000	-1812.73	169.41
3	GUIDE	37619976	9.30	7496	0.048	-0.044	0.080	0.128	183.960561	7.445990	1103.13	-769.87
4	GUIDE	37620552	8.68	7493	0.164	0.183	0.094	0.142	184.111141	7.355457	1206.31	-150.09
5	GUIDE	114425864	8.27	7500	-0.232	-0.189	0.079	0.127	183.869106	8.243060	-1440.30	-2138.30
6	GUIDE	114426224	8.86	7496	0.149	0.046	0.082	0.133	184.430539	7.663672	-248.19	495.42
7	GUIDE	114434360	10.20	7486	-0.127	0.002	0.178	0.290	184.397734	7.520288	274.55	579.12

2.4 Star Slots

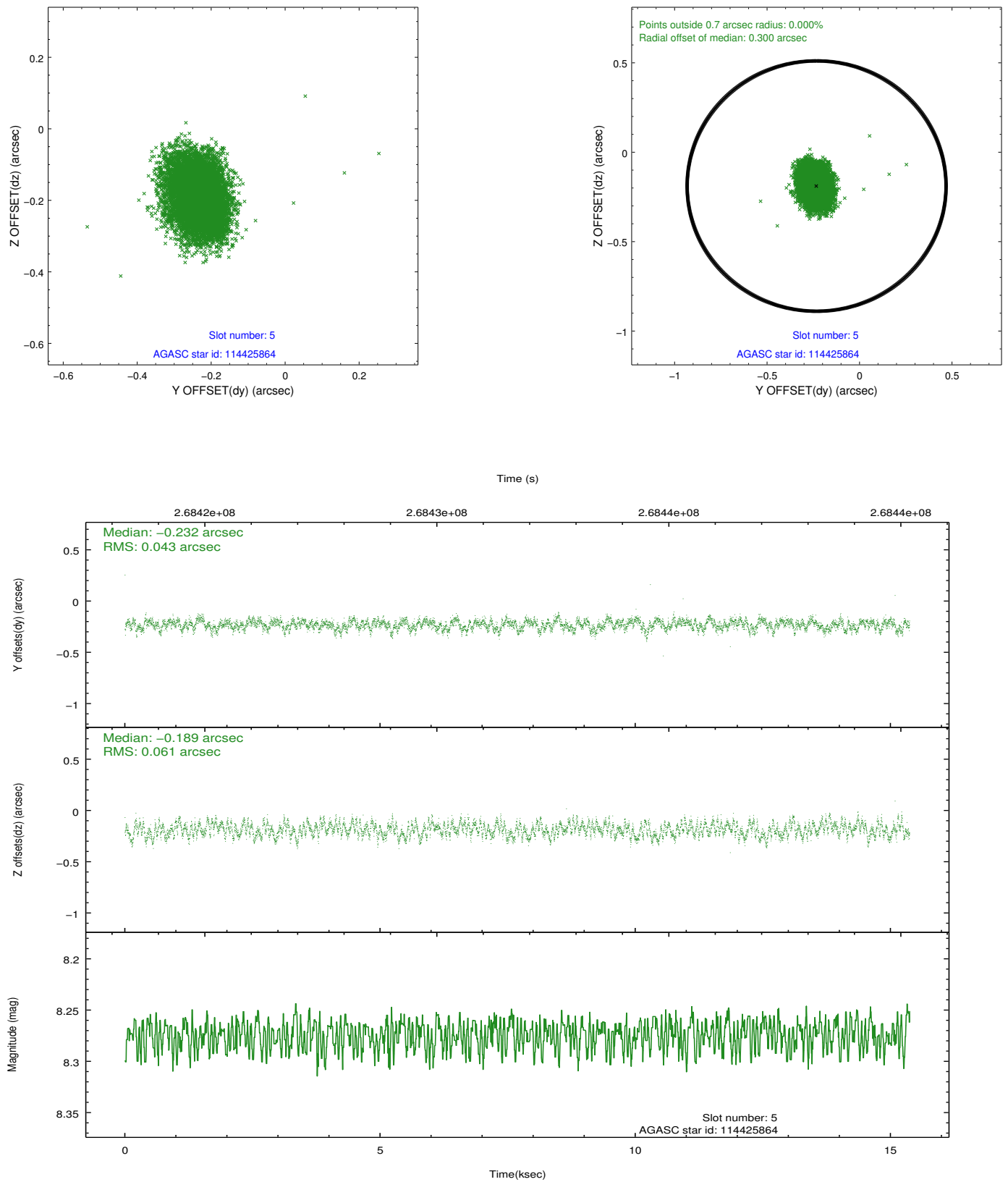
2.4.1 Slot 3



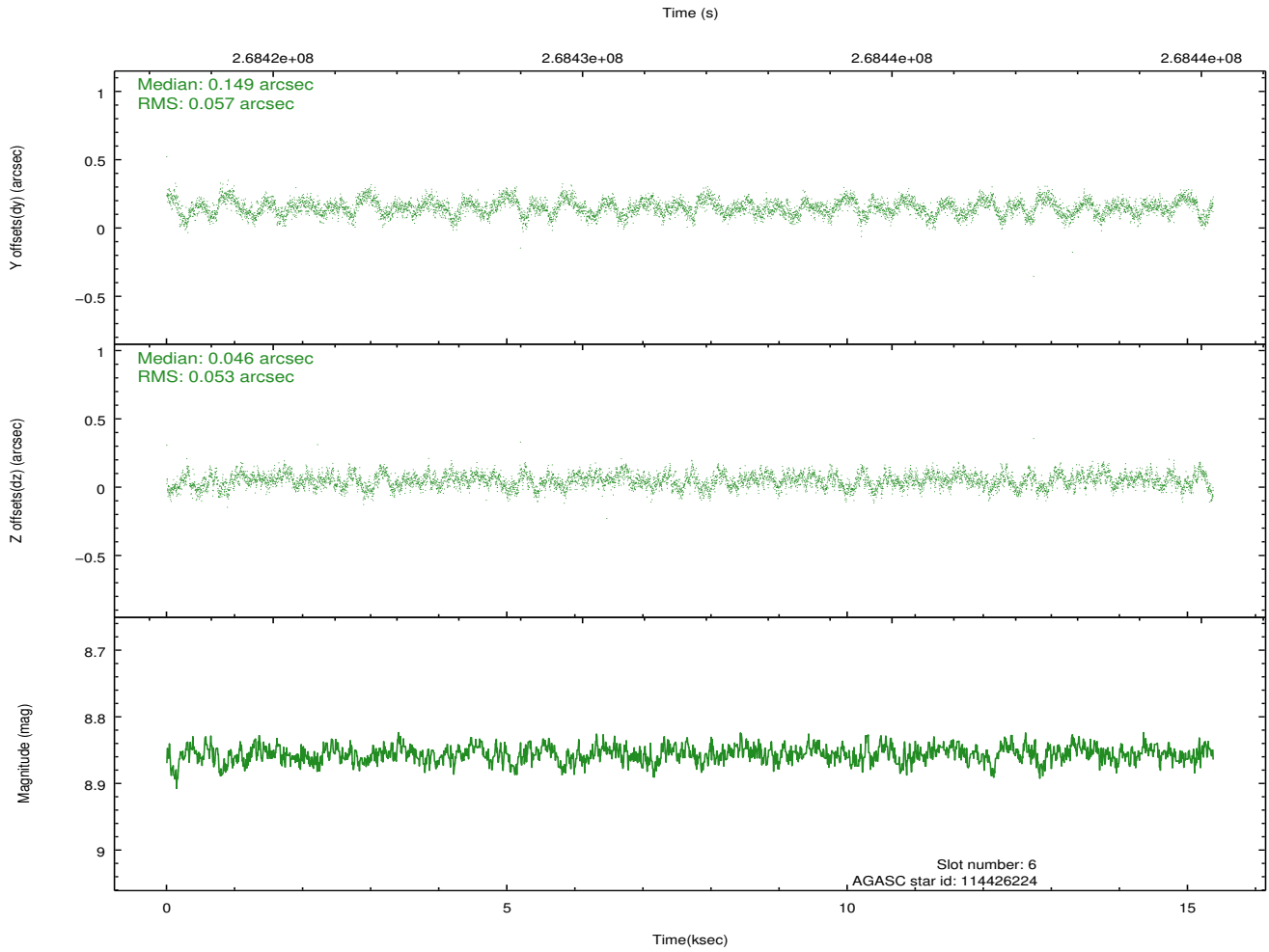
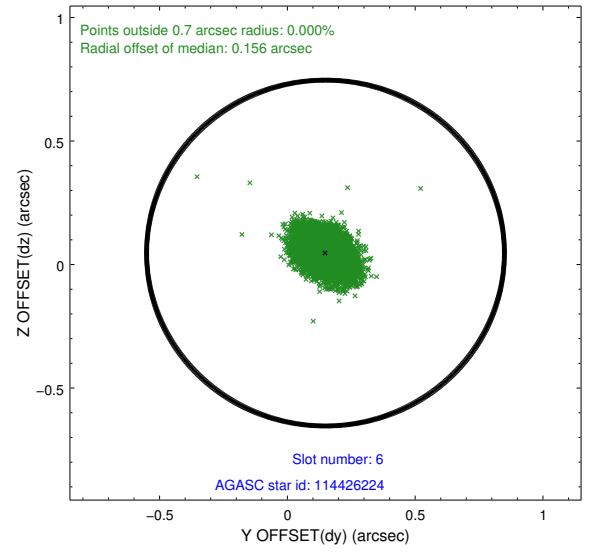
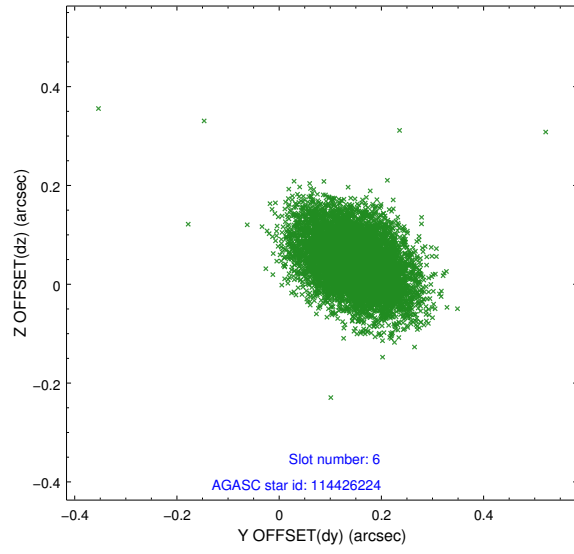
2.4.2 Slot 4



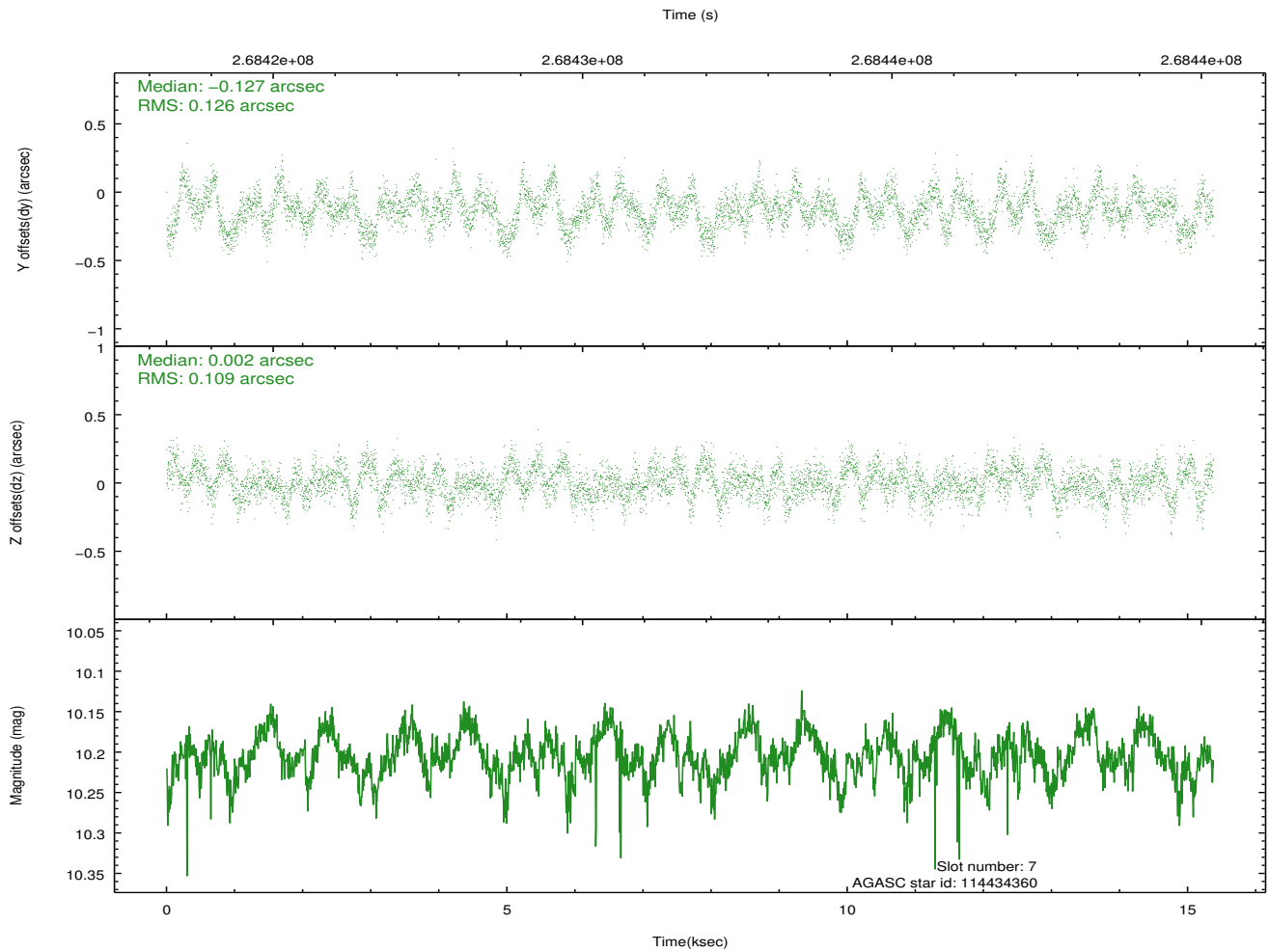
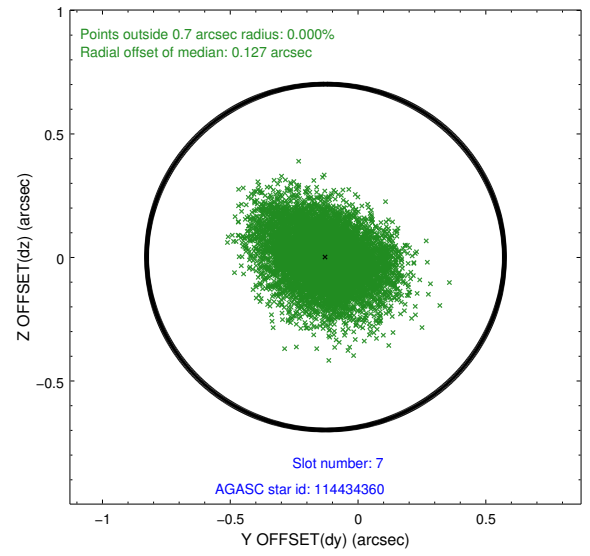
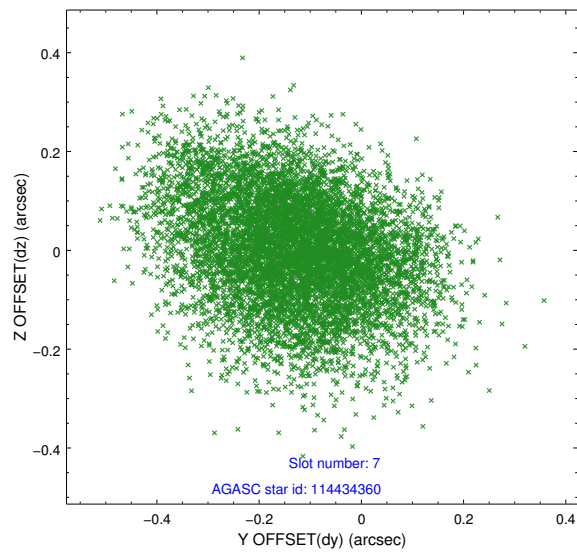
2.4.3 Slot 5



2.4.4 Slot 6

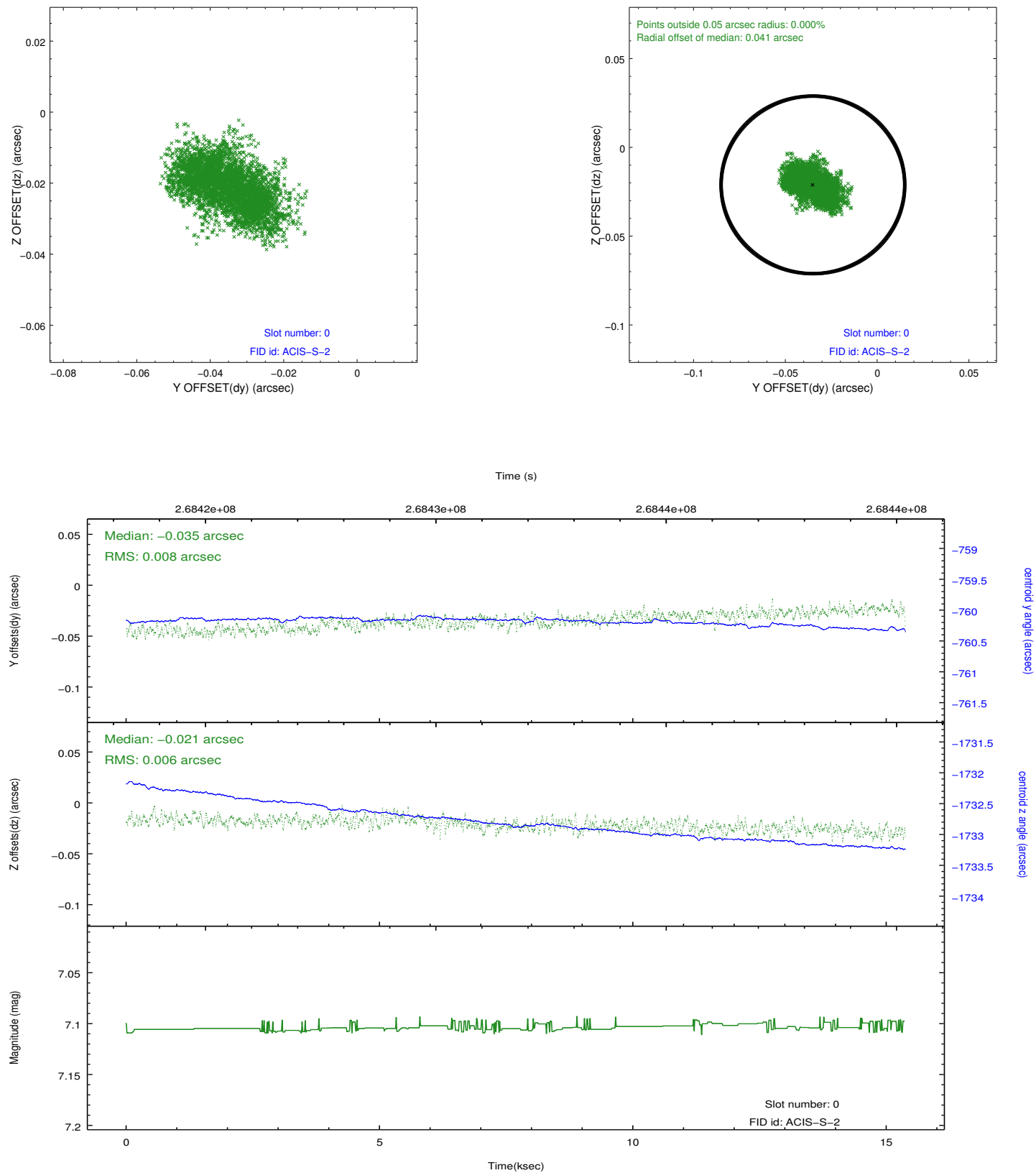


2.4.5 Slot 7

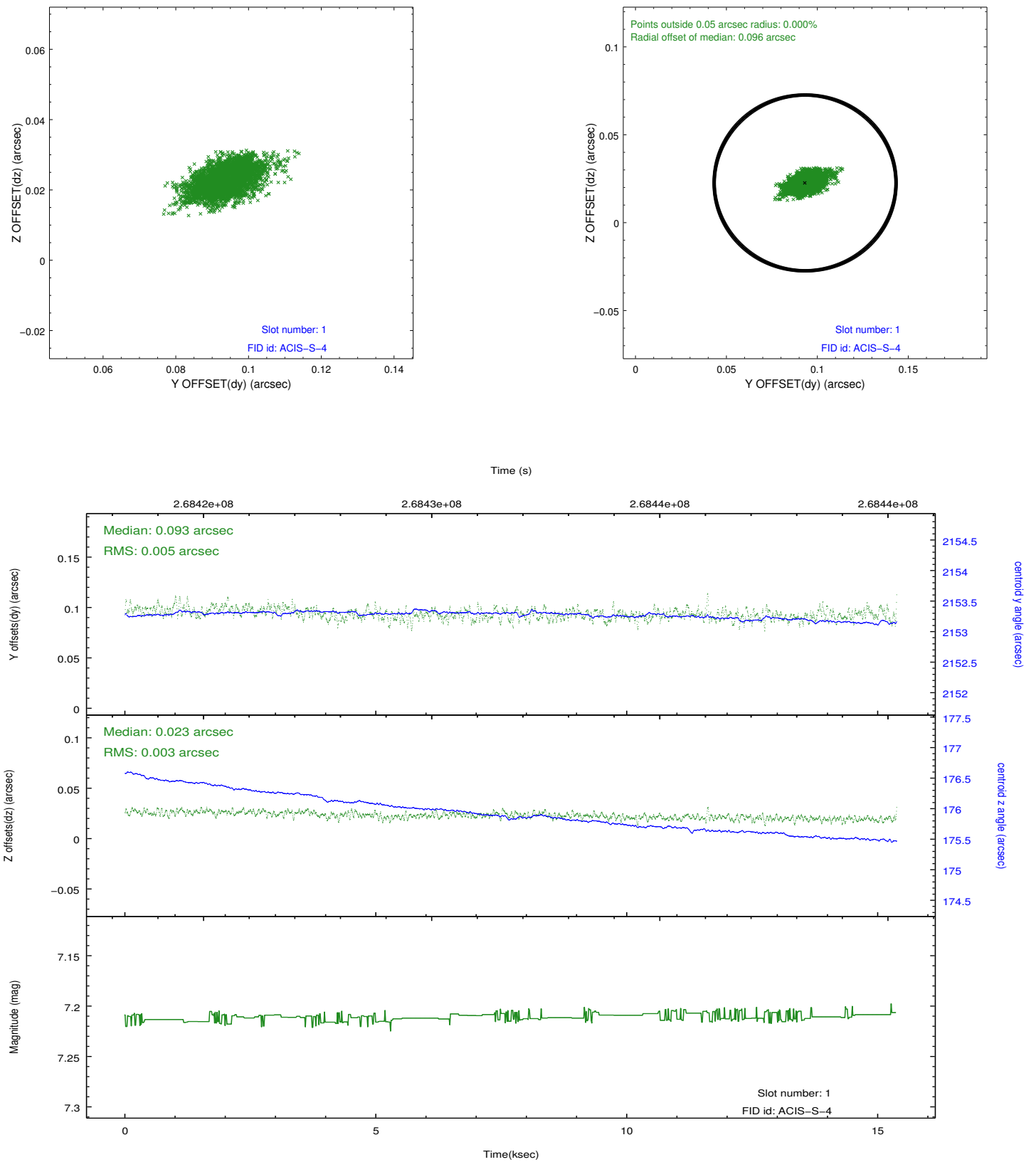


2.5 FID Slots

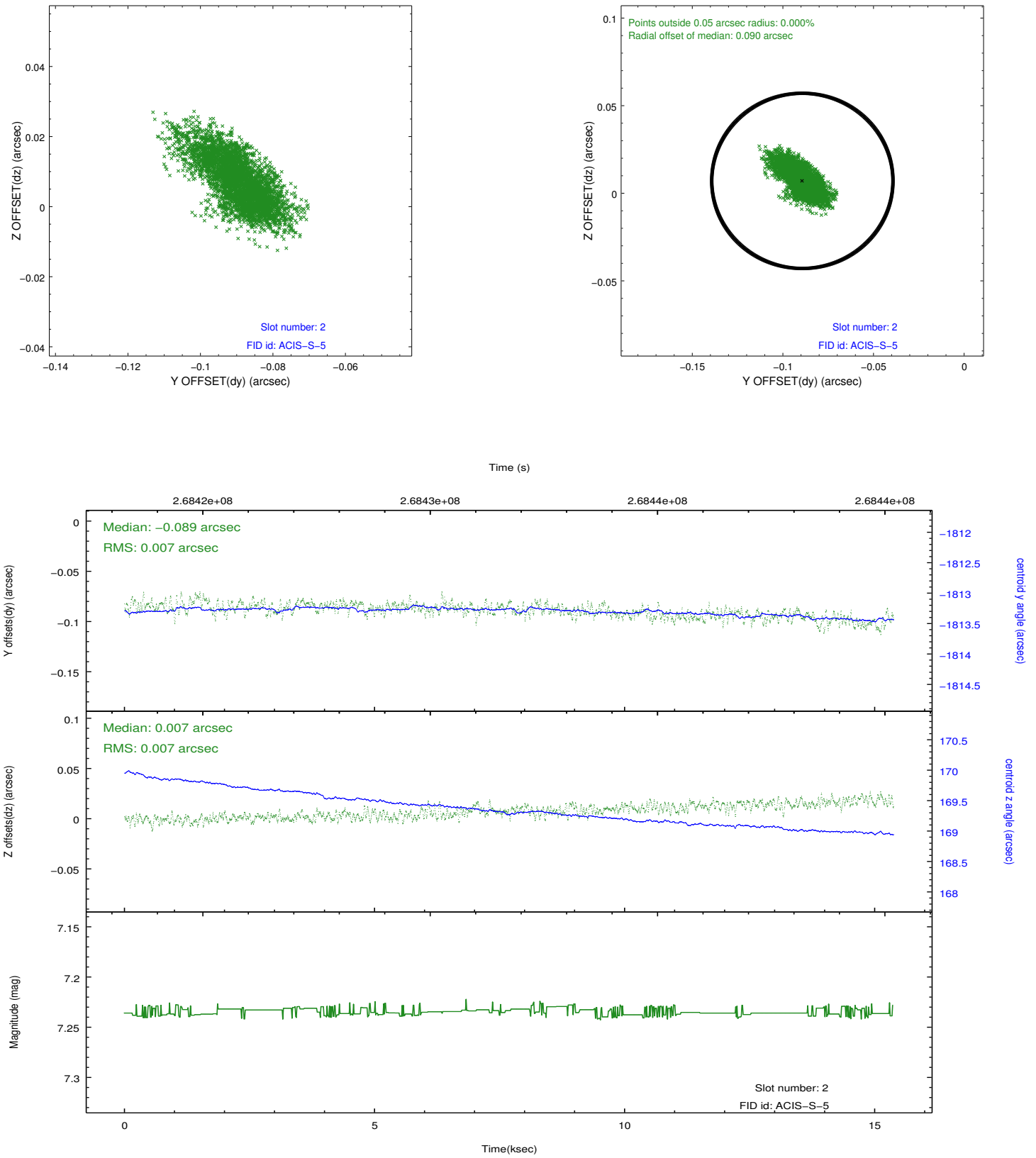
2.5.1 Slot 0



2.5.2 Slot 1



2.5.3 Slot 2



A Summary

A.1 Status

V&V Scientist	Beth Sundheim
V&V Date (YYYY-MM-DD)	2012.04.05
V&V Edition	1
V&V Disposition and Status	OK
V&V Charge Time	15.0755999

A.2 Comments