

V&V Reference Report

L2 ASCDS Version : 8.4.3.1

Observation 6514 - L2 Version 3
Chandra X-Ray Center

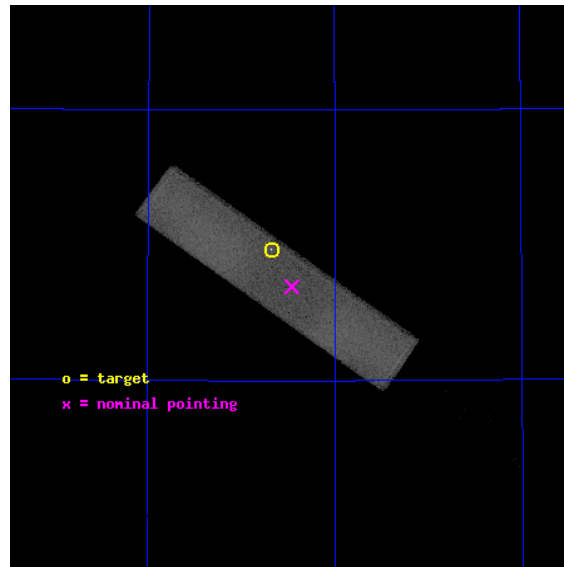
L2 Processing Date : Aug 11 2012

Contents

1	Front	2
2	OBI	3
2.1	OBI	3
2.1.1	Images	3
2.1.2	Parameters	4
2.1.3	Events	4
2.2	Compared Parameters	5
2.3	Aspect	6
2.4	Star Slots	9
2.4.1	Slot 3	9
2.4.2	Slot 4	10
2.4.3	Slot 5	11
2.4.4	Slot 6	12
2.4.5	Slot 7	13
2.5	FID Slots	14
2.5.1	Slot 0	14
2.5.2	Slot 1	15
2.5.3	Slot 2	16
A	Summary	17
A.1	Status	17
A.2	Comments	17

1 Front

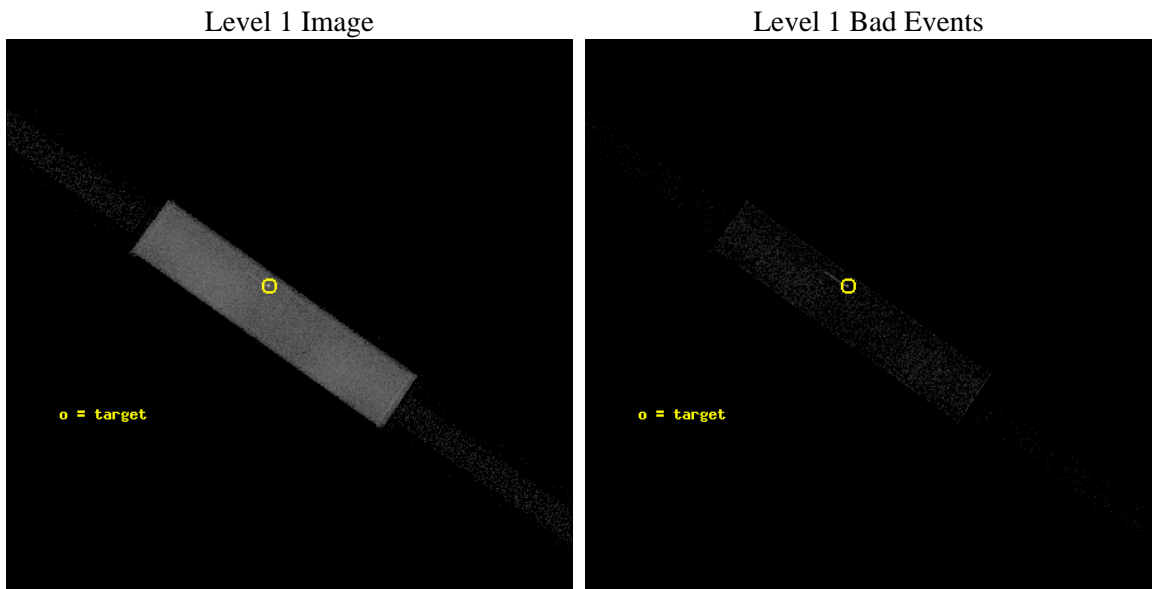
seq_num	290607	Sequence number
obs_id	6514	Observation id
title	AO7B Calibration Observations to Monitor the Spatial Variations in the HRC-S Gain	Proposal title
observer	Dr. CXC Calibration	Principal investigator
object	ArLac	Source name
ra_targ	332.17	Observer's specified target RA [deg]
dec_targ	45.742306	Observer's specified target Dec [deg]
ra_nom	332.11487693848	Nominal RA [deg]
dec_nom	45.673378029231	Nominal Dec [deg]
roll_nom	215.06304024496	Nominal Roll [deg]
revision	3	Processing version of data
ontime	1149.2813040614	[s]
livetime	1133.4047191363	Ontime multiplied by DTCOR
l2events	109156	Number of level 2 events



2 OBI

2.1 OBI

2.1.1 Images



2.1.2 Parameters

obi_num	0	Obi number	sched_exp_time	1000.000000	[s] Scheduled observation exposure time
ascdsver	8.4.5	Processing system revision	ontime	1149.2813040614	[s]
caldsver	4.5.1.1	 	l1events	161216	Number of level 1 events
date	2012-08-11T14:56:24	Date and time of file creation			
revision	3	Processing version of data			

2.1.3 Events

Level 1 Events

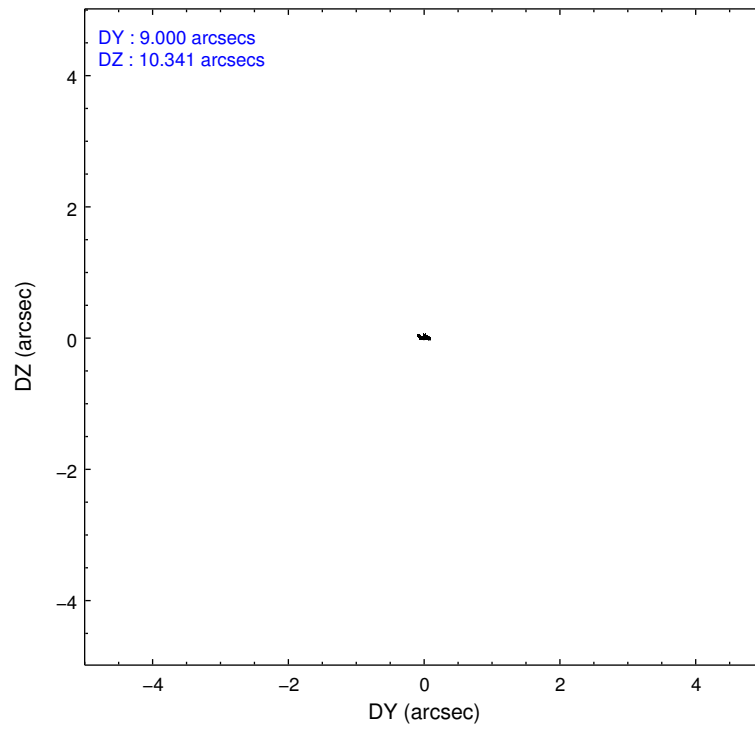
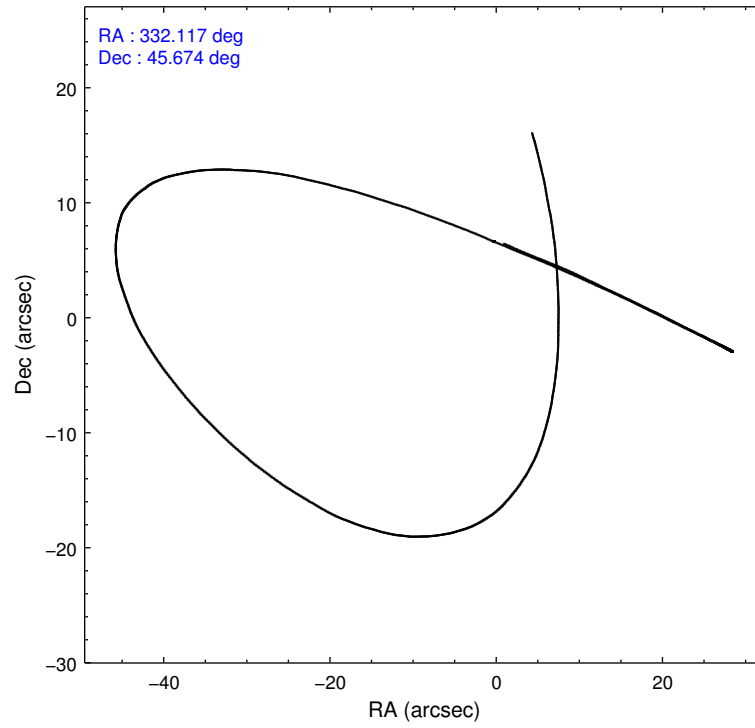
	segment 1	segment 2	segment 3
level 1 events	1942	157448	1826
rejected events	1942	34535	1813
rejected %	100%	21%	99%

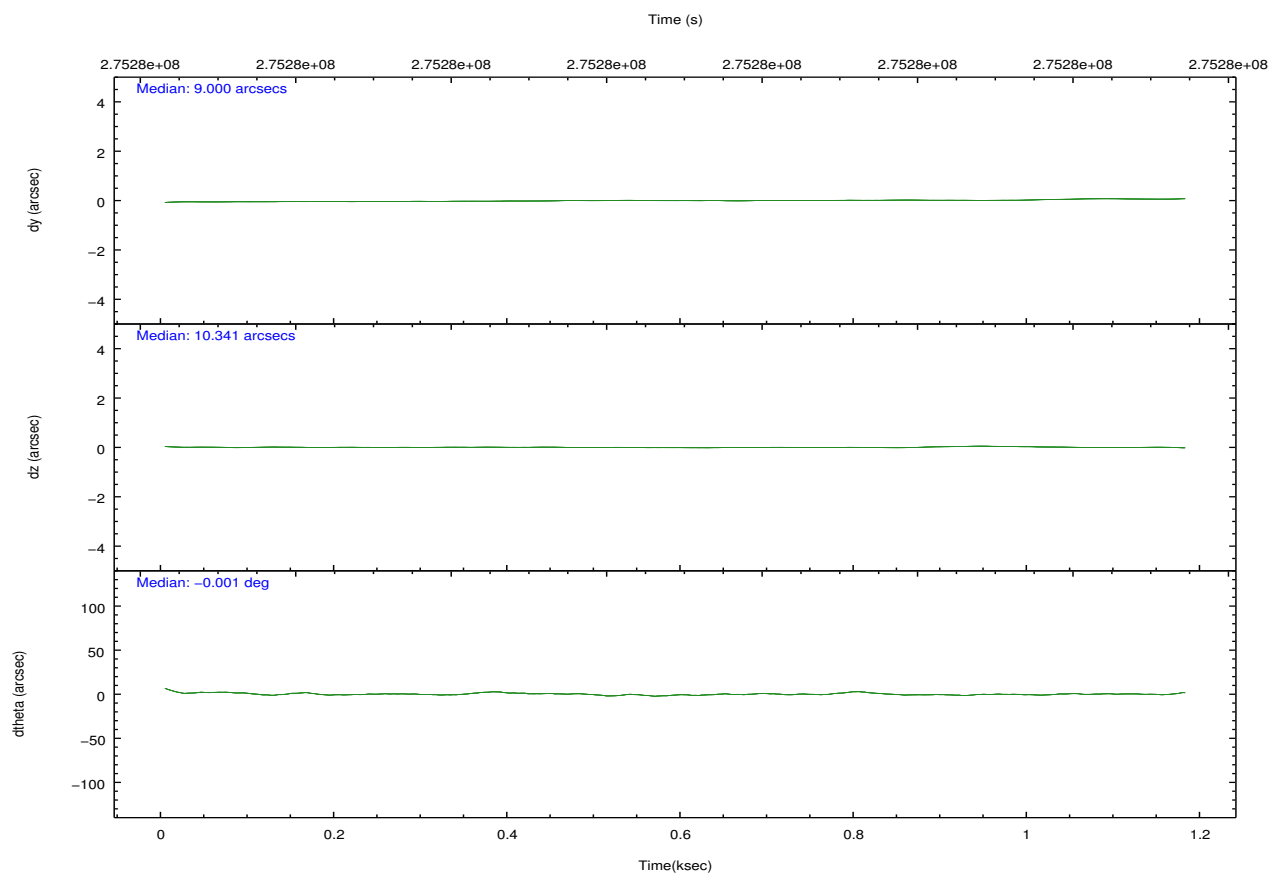
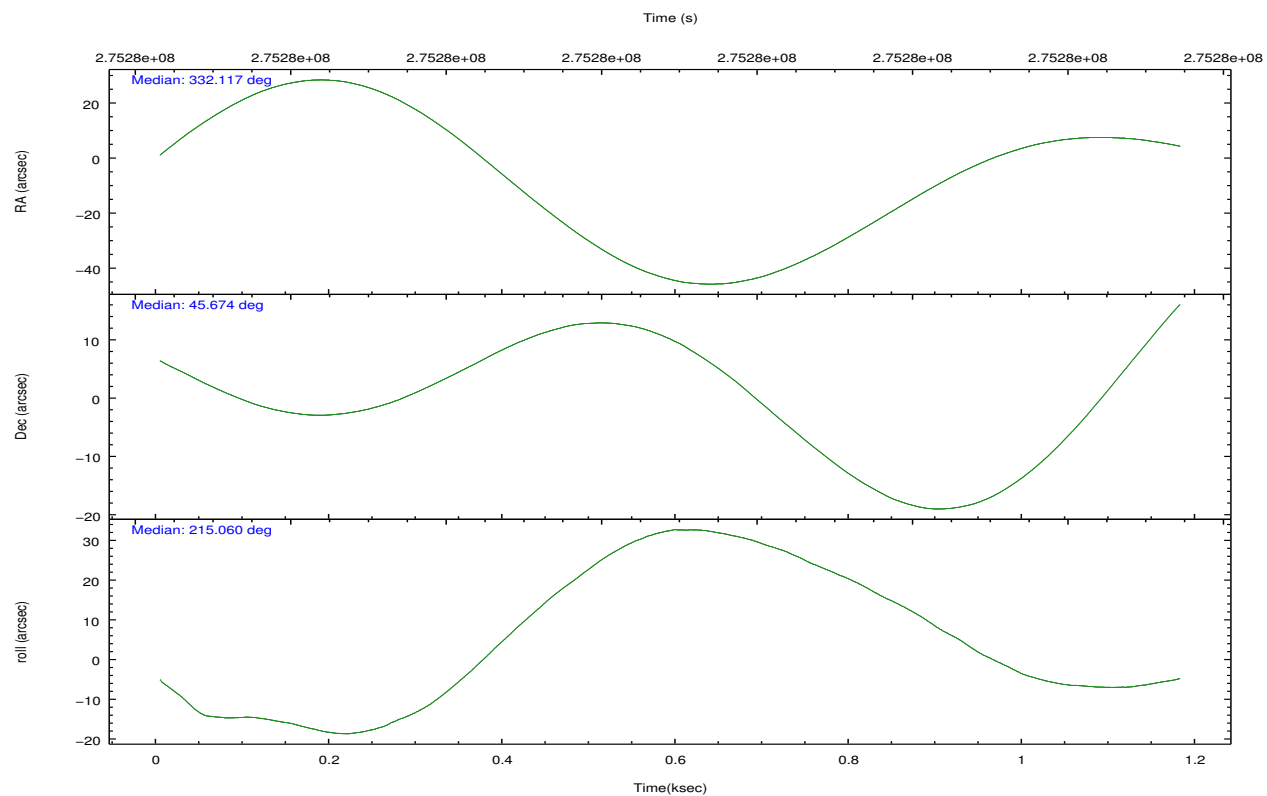
2.2 Compared Parameters

Parameter	Planned	Actual
Instrument	HRC	HRC
Detector	HRC-S	HRC-S
Grating	NONE	NONE
Data mode	OBSERVING	OBSERVING
Observation mode	POINTING	POINTING
[deg] Pointing RA	332.128948	332.1148769384808
[deg] Pointing Dec	45.700694	45.67337802923075
[deg] Pointing Roll	214.985630	215.0630402449648
[mm] SIM focus pos	-1.533336	-1.526339935833849
[mm] SIM defocus	7.710433287538843e-07	0.006996703570447904
[mm] SIM translation stage pos	250.455976	250.466033080201
[mm] SIM translation stage offset	0	-0.01005468664627074
[s] Observation start time (MET)	275279480.184000	275279104.28098
Observation start date	2006-09-22T02:30:15	2006-09-22T02:25:04
[s] Observation end time (MET)	275280480.184000	275280614.10605
Observation end date	2006-09-22T02:46:55	2006-09-22T02:50:14

Parameter	Planned	Actual
Obspar format version number	7	7
Obspar file type	PREDICTED	ACTUAL
Obspar update status	NONE	UPDATED

2.3 Aspect



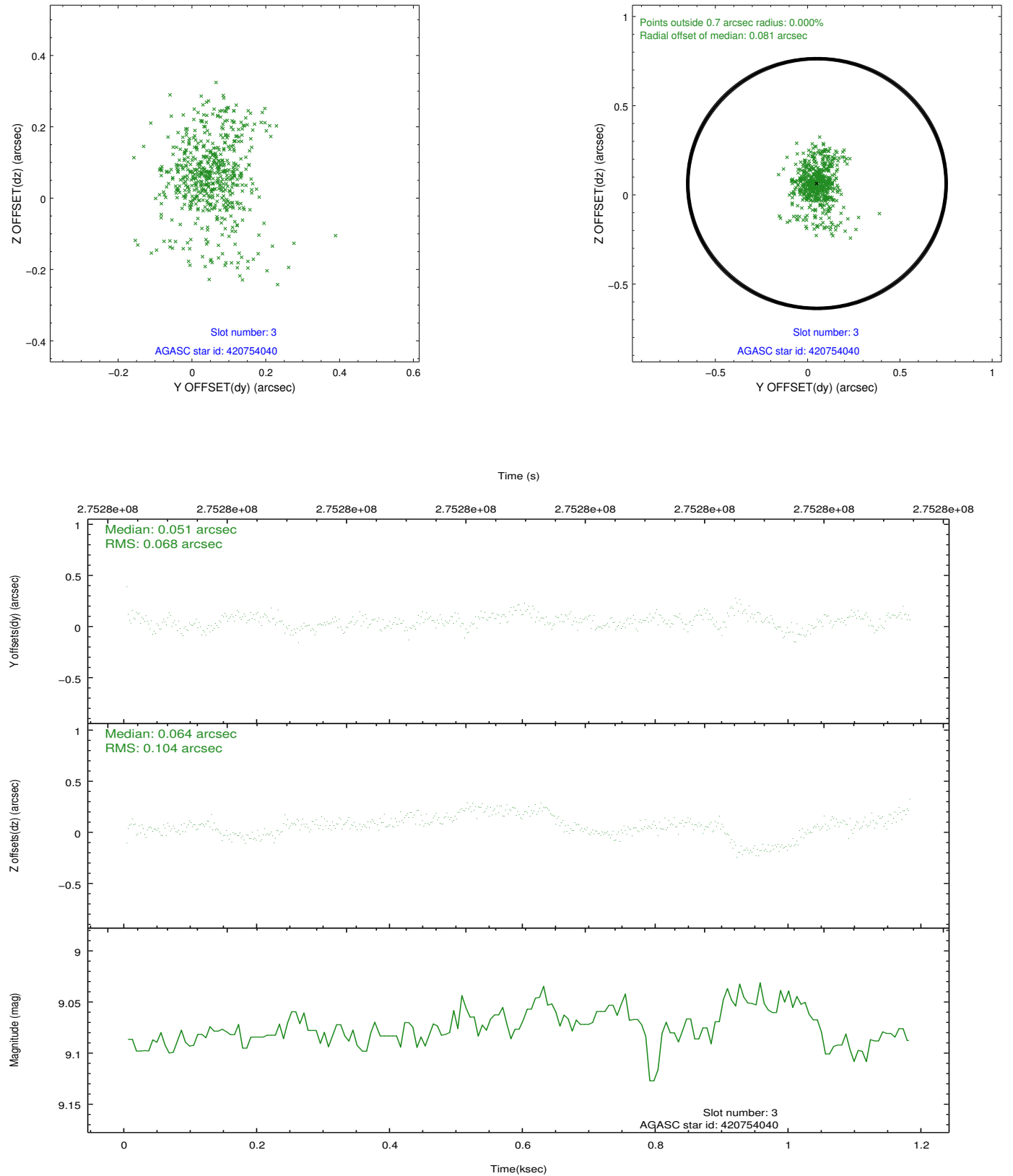


Slot Statistics

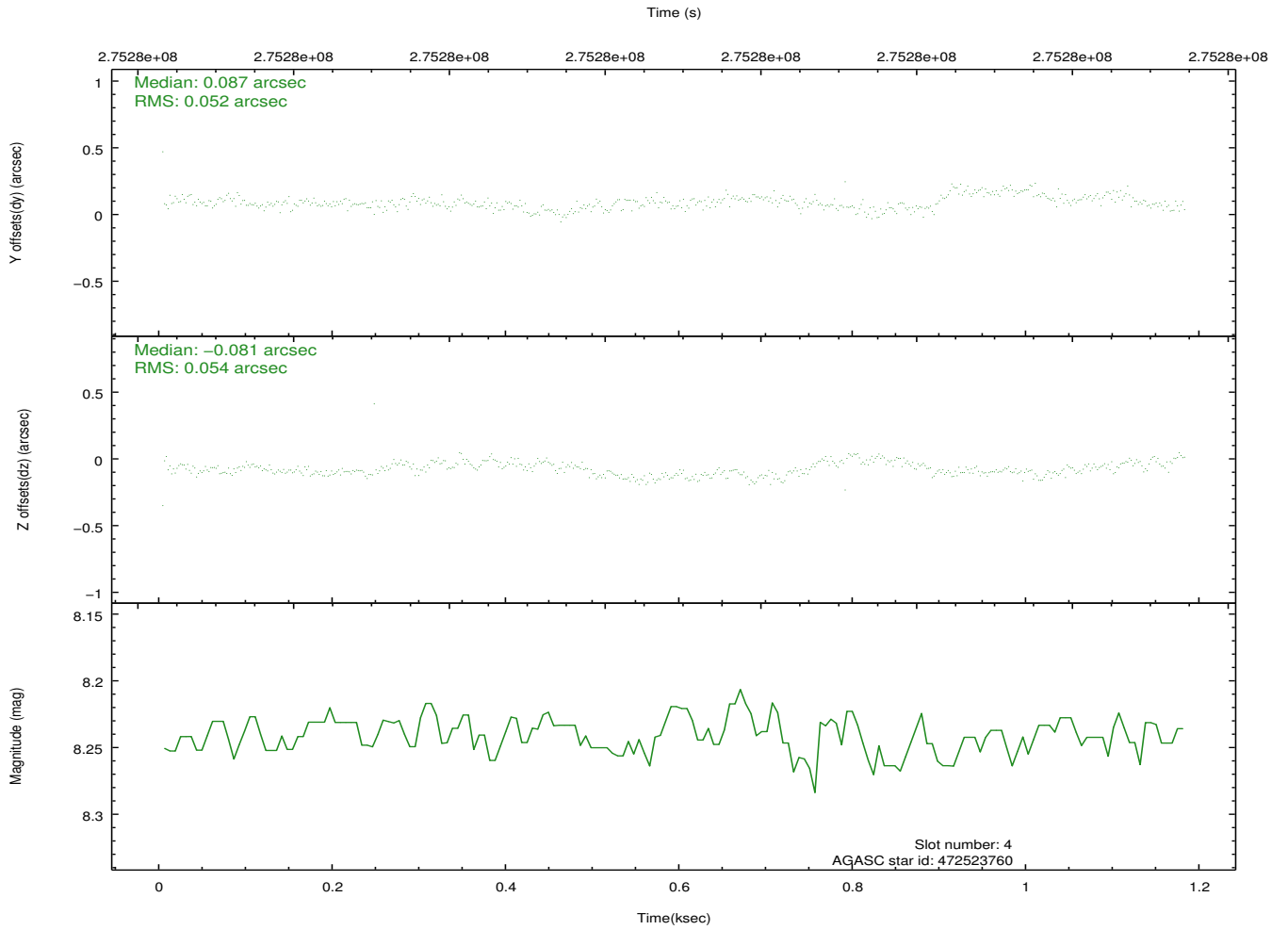
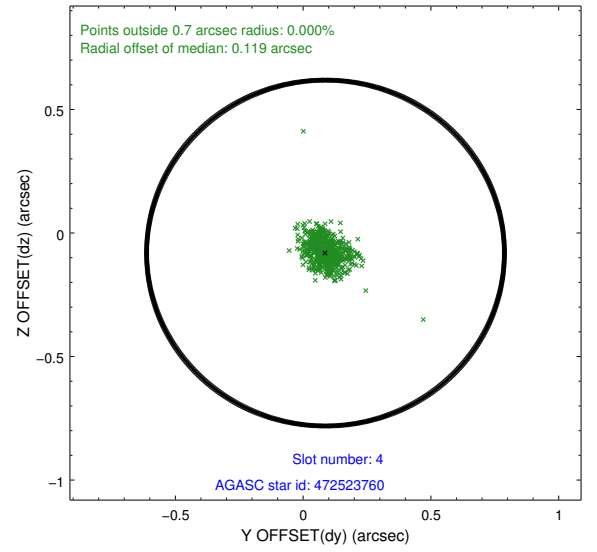
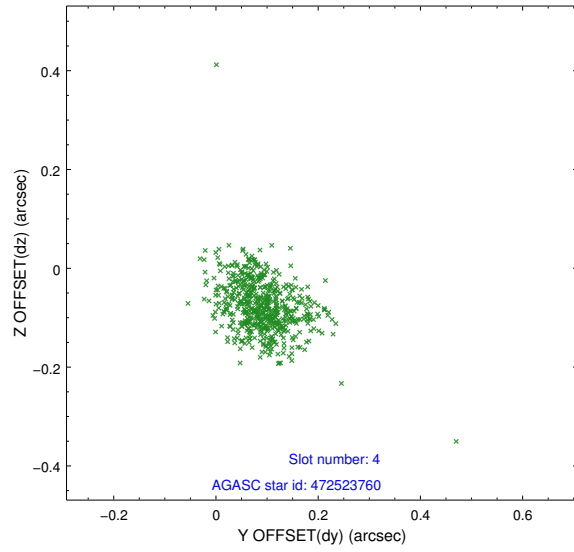
slot	status	id	mag	n_pts	med_dy	med_dz	dr1	dr2	ra	dec	mean_y	mean_z
0	FID	HRC-S-2	7.05	288	0.150	-0.151	0.011	0.020	0.000000	0.000000	1236.47	-451.72
1	FID	HRC-S-3	7.07	288	0.047	-0.092	0.006	0.013	0.000000	0.000000	-1161.68	569.02
2	FID	HRC-S-4	7.02	288	0.209	-0.052	0.012	0.025	0.000000	0.000000	1231.11	575.08
3	GUIDE	420754040	9.08	574	0.051	0.064	0.121	0.244	331.917939	44.882543	2130.01	2100.29
4	GUIDE	472523760	8.24	576	0.087	-0.081	0.074	0.122	331.645363	45.403260	1618.52	172.99
5	GUIDE	472525528	6.64	576	-0.194	0.008	0.072	0.121	331.551102	45.248694	2133.87	485.45
6	GUIDE	472655152	9.43	576	0.068	-0.103	0.101	0.162	332.504239	45.862991	-1101.92	55.68
7	GUIDE	472533912	9.15	572	-0.015	0.112	0.138	0.205	331.791136	46.368695	-692.78	-2456.69

2.4 Star Slots

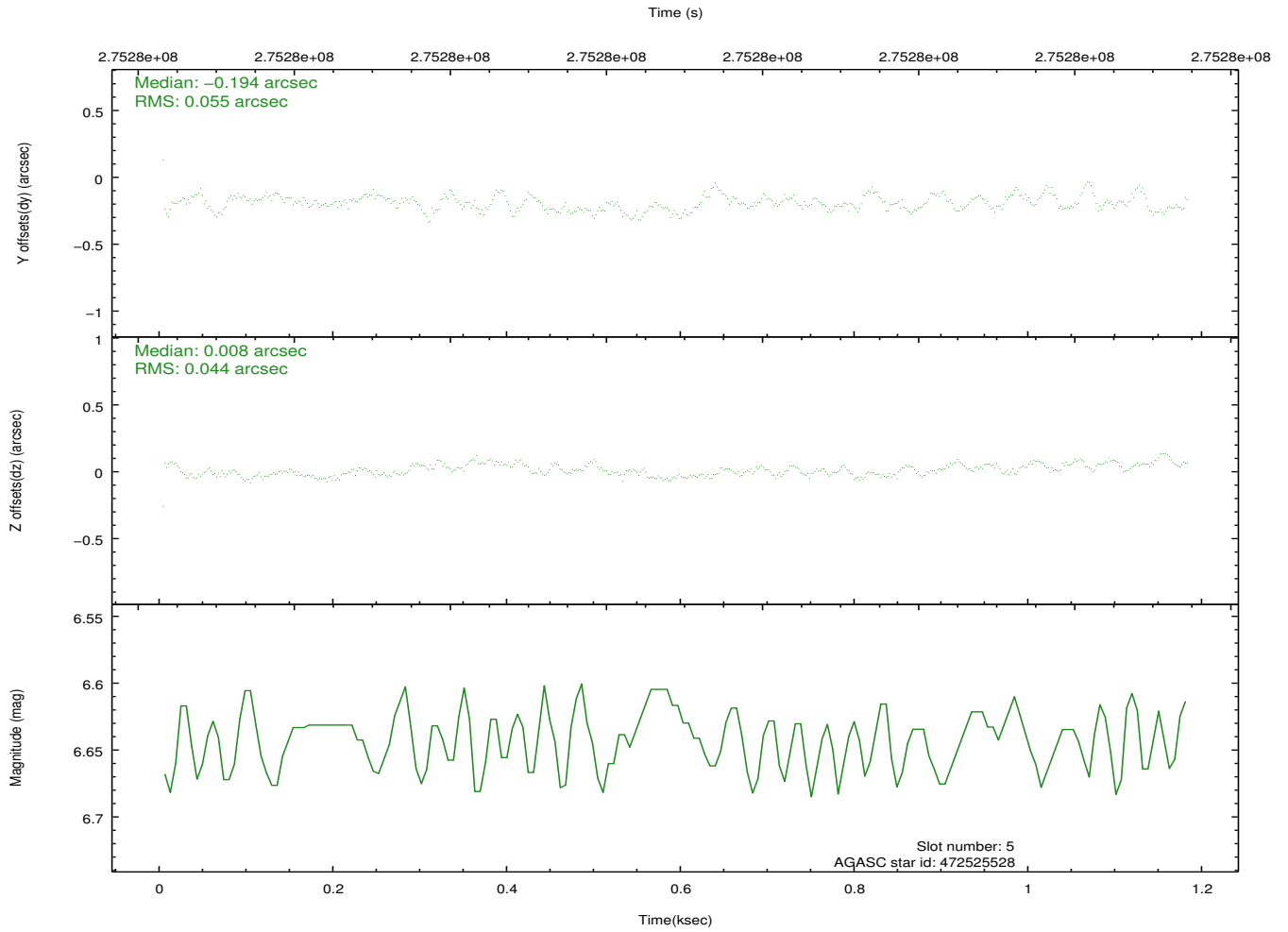
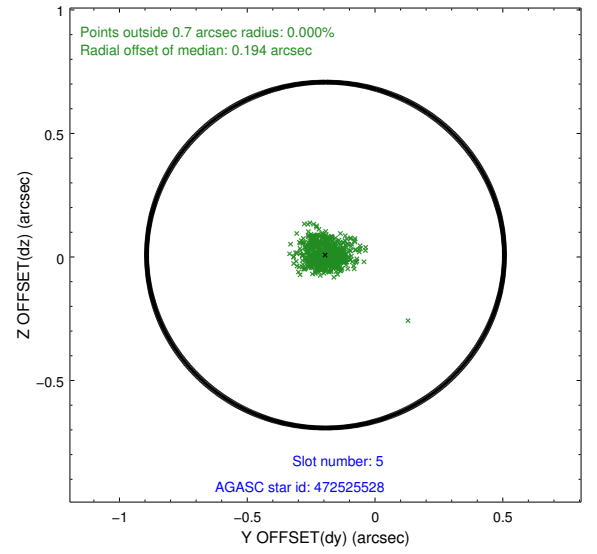
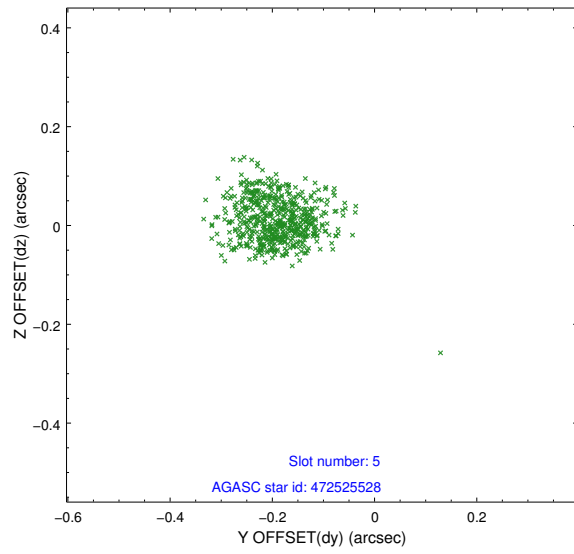
2.4.1 Slot 3



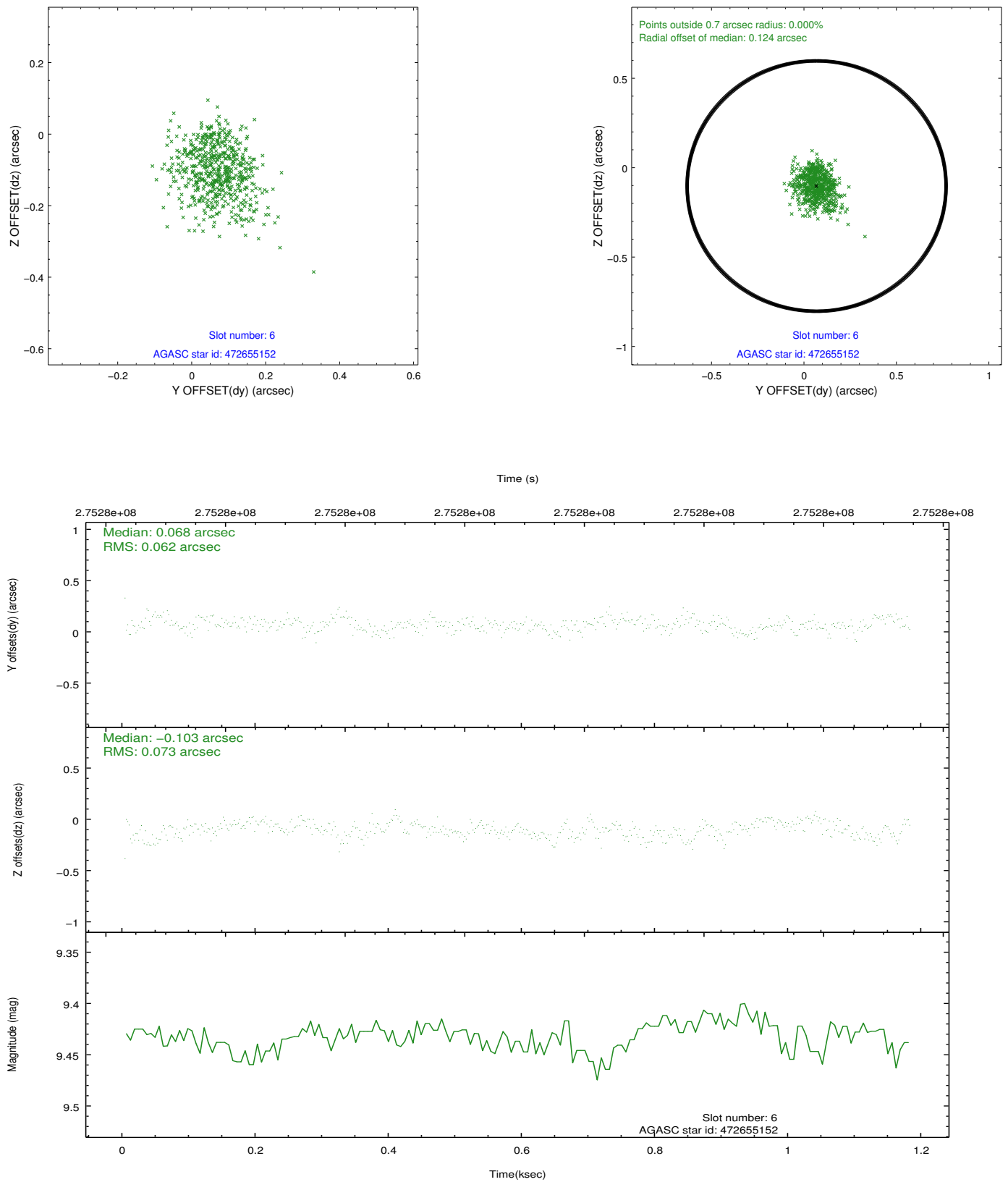
2.4.2 Slot 4



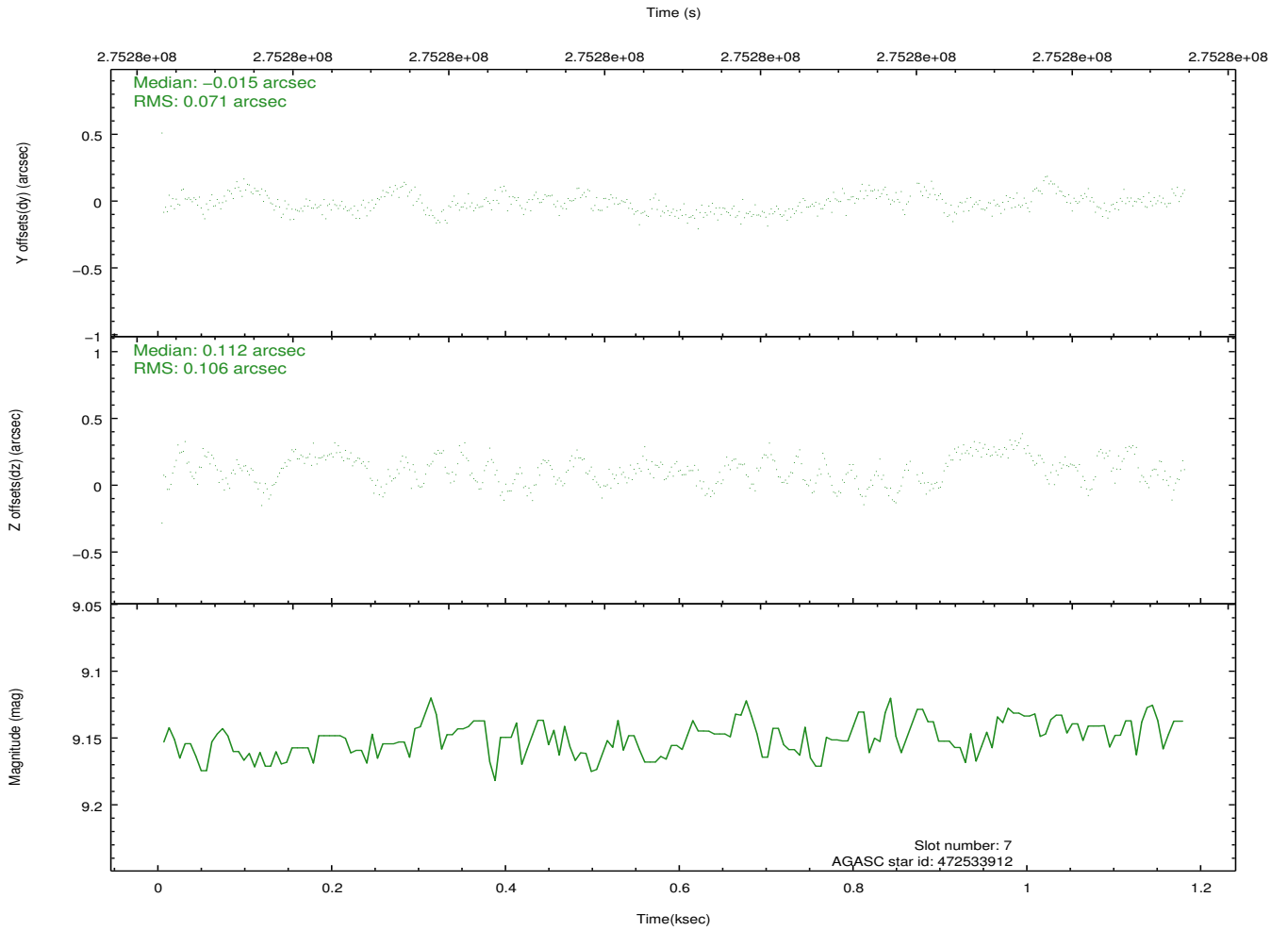
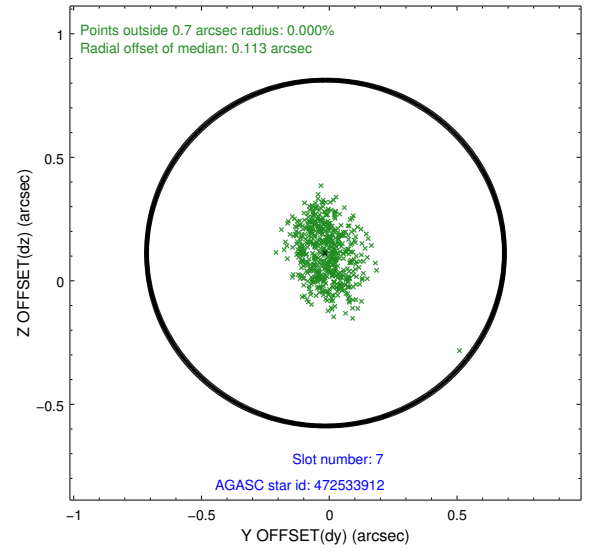
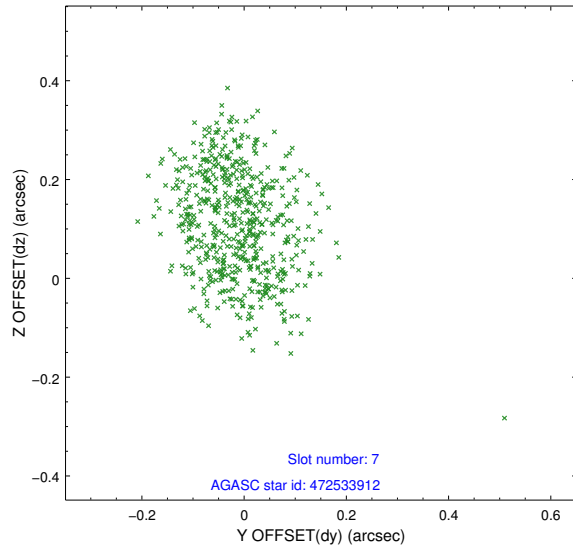
2.4.3 Slot 5



2.4.4 Slot 6

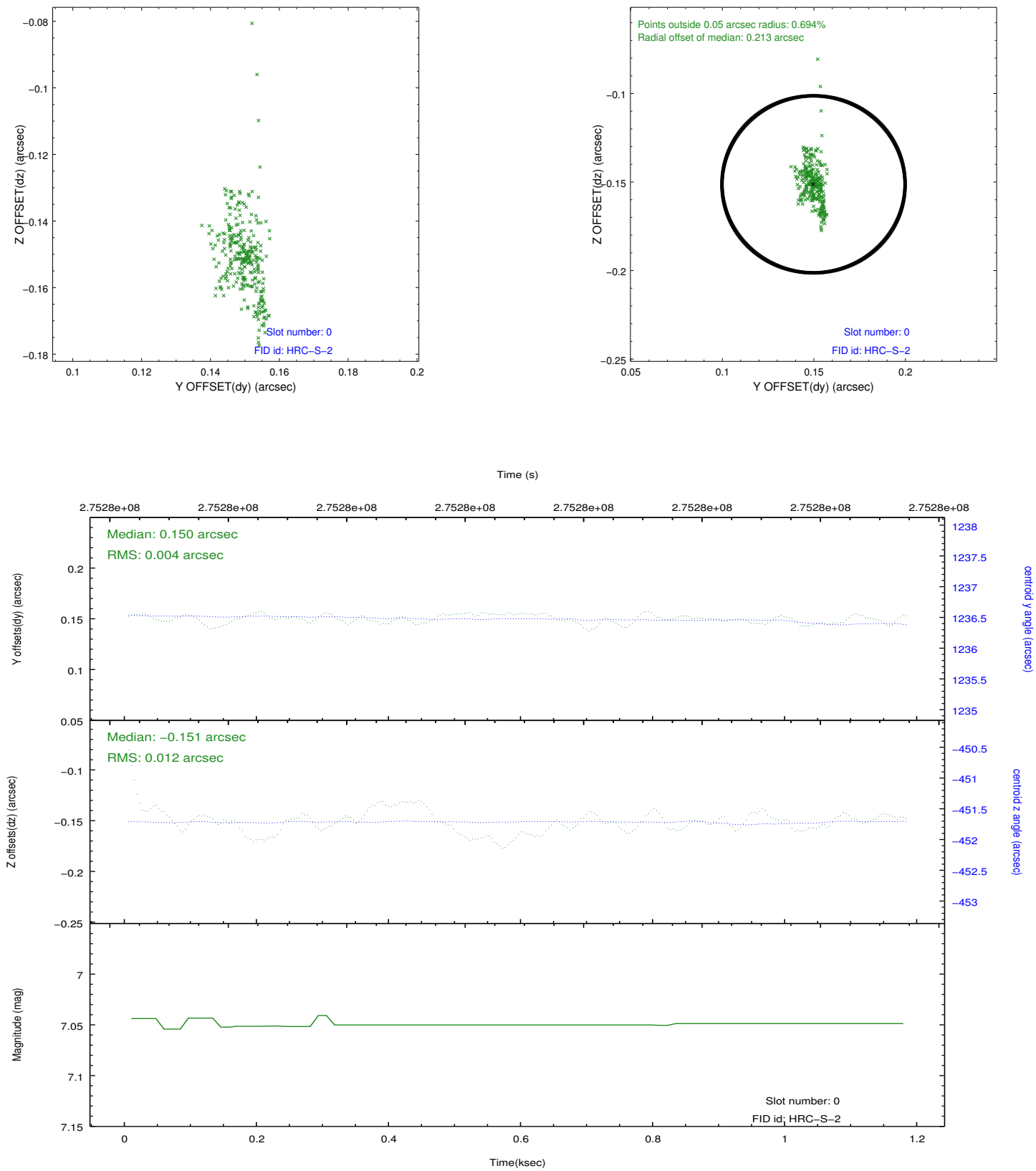


2.4.5 Slot 7

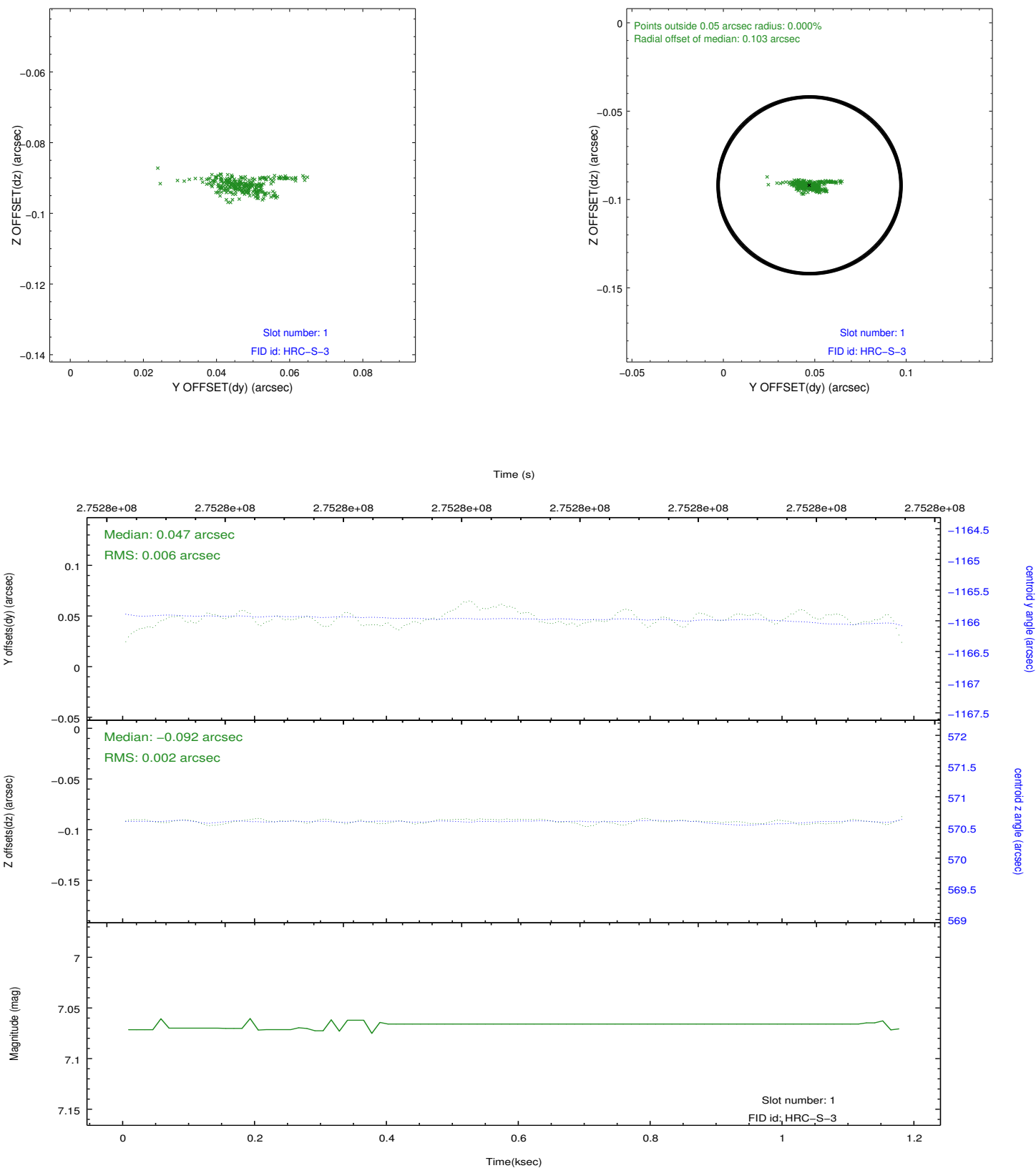


2.5 FID Slots

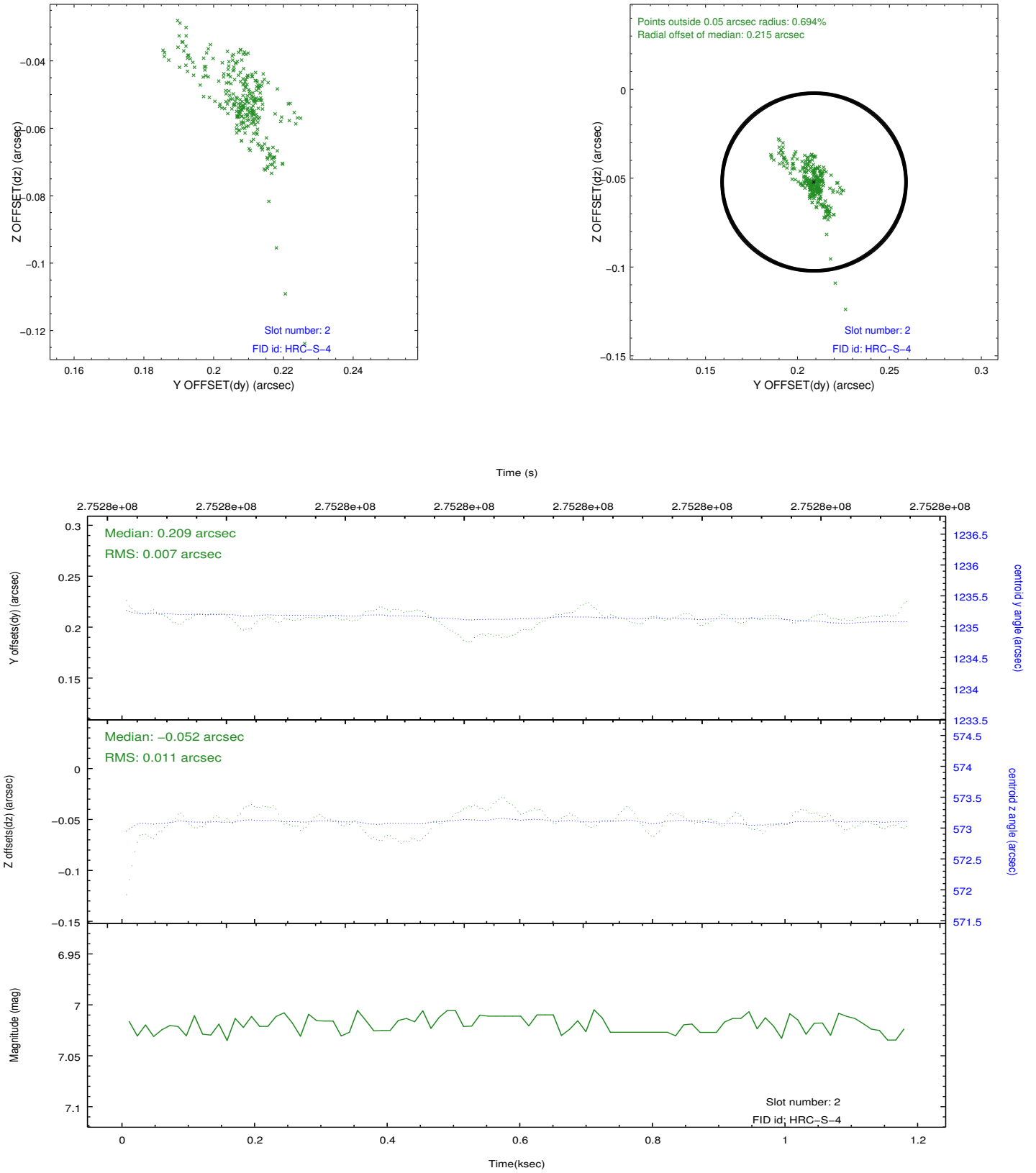
2.5.1 Slot 0



2.5.2 Slot 1



2.5.3 Slot 2



A Summary

A.1 Status

V&V Scientist	Jen Lauer
V&V Date (YYYY-MM-DD)	2012.08.14
V&V Edition	1
V&V Disposition and Status	OK
V&V Charge Time	1.1492813

A.2 Comments