

V&V Reference Report

L2 ASCDS Version : 8.1.2

Observation 62224 - L2 Version 4
Chandra X-Ray Center

L2 Processing Date : Dec 2 2009

Contents

1	Front	2
2	OBI	3
2.1	OBI	3
2.1.1	Images	3
2.1.2	Bias	3
2.1.3	Parameters	4
2.1.4	Events	4
2.2	Compared Parameters	5
2.3	Star Slots	6
2.4	FID Slots	6
A	Summary	7
A.1	Status	7
A.2	Comments	7

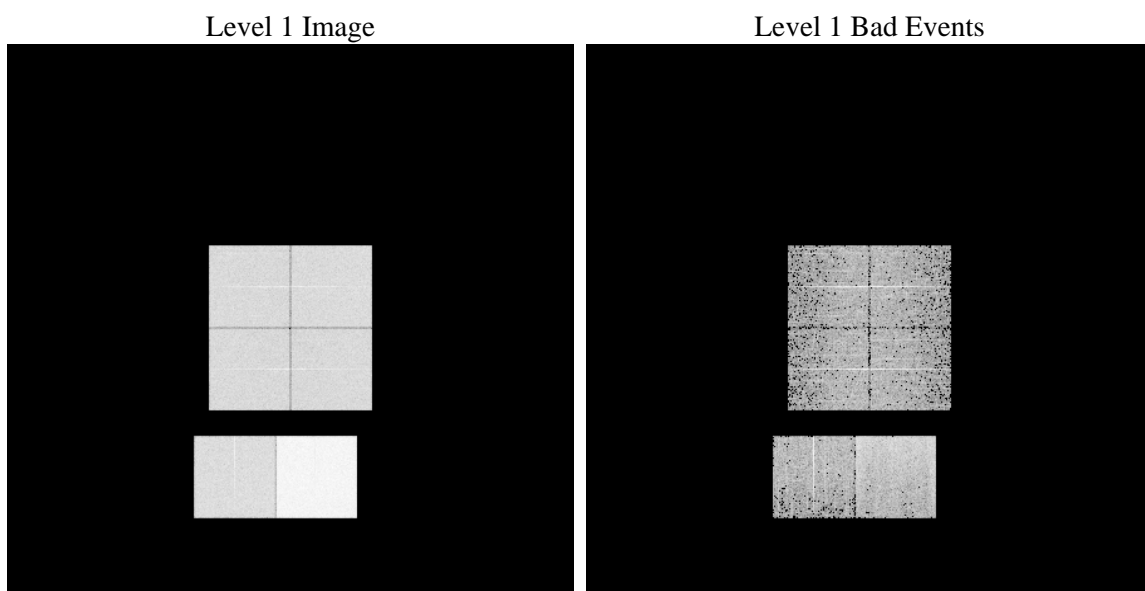
1 Front

seq_num	 	Sequence number
obs_id	62224	Observation id
title	ACIS-012367 diagnostics	Proposal title
observer	CHANDRA engineering request/realtime commanding	Principal investig
object	 	Source name
dtcycle	0	
cycle	P	events from which exps? Prim/Second/Both
ra_targ	0.0	Observer's specified target RA
dec_targ	0.0	Observer's specified target Dec
ra_nom	63.660640870093	Nominal RA
dec_nom	5.5666685150794	Nominal Dec
roll_nom	293.16228363331	Nominal Roll
revision	4	Processing version of data
ontime	3581.3267863542	Sum of GTIs [s]
livetime	3535.9778701693	Livetime [s]
ontime0	1396.8870159537	Sum of GTIs [s]
ontime1	1461.4579149857	Sum of GTIs [s]
ontime2	1367.7174963132	Sum of GTIs [s]
ontime3	1364.350044243	Sum of GTIs [s]
ontime6	1516.4736148268	Sum of GTIs [s]
ontime7	3581.3267863542	Sum of GTIs [s]
l2events	918736	Number of level 2 events

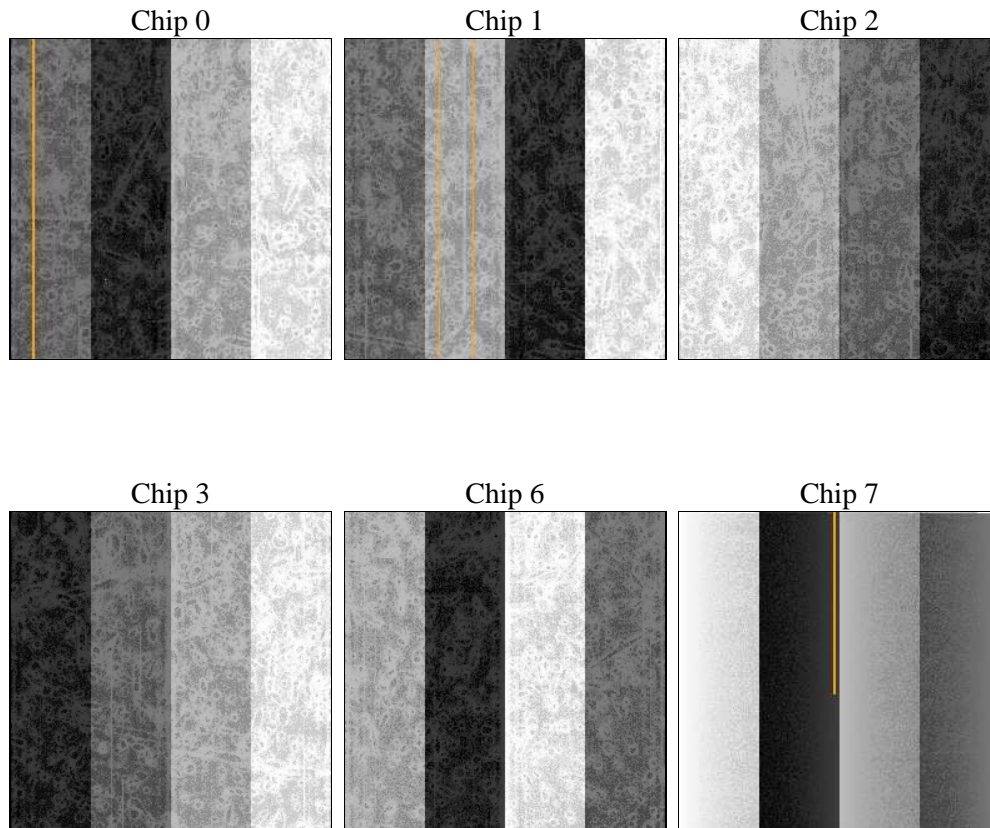
2 OBI

2.1 OBI

2.1.1 Images



2.1.2 Bias



2.1.3 Parameters

obi_num	0	Obi number		
ascdsver	8.1.2	ASCDS version number	sched_exp_time	0.0
caldsver	4.1.4	 		Scheduled observation exposure time
date	2009-12-02T20:54:07	Date and time of file creation	ontime	3581.3267863542
revision	2	Processing version of data	ontime0	1396.8870159537
			ontime1	1461.4579149857
			ontime2	1367.7174963132
			ontime3	1364.350044243
			ontime6	1516.4736148268
			ontime7	3581.3267863542
			l1events	1060388
				Sum of GTIs [s]
				Sum of GTIs [s]
				Sum of GTIs [s]
				Sum of GTIs [s]
				Sum of GTIs [s]
				Sum of GTIs [s]
				Sum of GTIs [s]
				Number of level 1 events

2.1.4 Events

	ccd 0	ccd 1	ccd 2	ccd 3	ccd 6	ccd 7		ccd 0	ccd 1	ccd 2	ccd 3	ccd 6	ccd 7
level 1 events	136710	142441	134458	134587	154127	358065	grade 0 events	42983	44909	35983	37659	36491	58288
rejected events	18105	18317	19384	18979	22408	34906		31%	31%	26%	27%	23%	16%
rejected %	13%	12%	14%	14%	14%	9%	grade 1 events	168	184	129	173	129	133
								0%	0%	0%	0%	0%	0%
							grade 2 events	45648	47771	50875	49715	61844	91208
								33%	33%	37%	36%	40%	25%
							grade 3 events	4575	4707	3784	3912	3732	27609
								3%	3%	2%	2%	2%	7%
							grade 4 events	4537	4756	3653	3863	3764	25055
								3%	3%	2%	2%	2%	6%
							grade 5 events	1148	1196	1130	1167	1248	5142
								0%	0%	0%	0%	0%	1%
							grade 6 events	20862	21981	20779	20459	25888	120999
								15%	15%	15%	15%	16%	33%
							grade 7 events	16789	16937	18125	17639	21031	29631
								12%	11%	13%	13%	13%	8%

2.2 Compared Parameters

Parameter	Planned	Actual	Parameter	Planned	Actual
Instrument	ACIS	ACIS	Obspar format version number	6	6
Detector	ACIS-012367	ACIS-012367	Obspar file type	PREDICTED	ACTUAL
Grating	NONE	NONE	Obspar update status	NONE	UPDATED
Data mode	FAINT	FAINT	On-chip summing requested	N	N
Observation mode	SECONDARY	SECONDARY	Subarray requested	NONE	NONE
Pointing RA	0	63.66064087009313	Alternating exposures requested	N	N
Pointing Dec	0	5.566668515079408	Primary exposure time	0.000000	3.2
Pointing Roll	0.0	293.1622836333124			
SIM focus pos (mm)	-0.782348	-0.6828225247311905			
SIM defocus (mm)	0	0.8505141146731063			
SIM translation stage pos (mm)	-233.592463	250.466033080201			
SIM translation stage offset (mm)	0	-0.01005468664627074			
Observation start time	64236626.271	64236625.502652			
Observation start date	2000-01-14T11:30:26	2000-01-14T11:30:25			
Observation end time	64243926.322	64243925.552917			
Observation end date	2000-01-14T13:32:06	2000-01-14T13:32:05			
Read mode	TIMED	TIMED			

2.3 Star Slots

2.4 FID Slots

A Summary

A.1 Status

V&V Scientist	Beth Sundheim
V&V Date (YYYY-MM-DD)	2010.02.01
V&V Edition	1
V&V Disposition and Status	OK
V&V Charge Time	3.5813267863542

A.2 Comments

The focal plane temperature is approximately -110C during this observation. This reprocessing of the data applies no CTI correction because none is available for this temperature at present.

The ACIS CTI correction has not been calibrated at this temperature, because it was early in the mission, and ACIS had not yet been lowered to the standard -119.7 C. Both front and back illuminated chips are affected. However a T_GAIN correction has been applied to the BI chips (ACIS-5 and ACIS-7) data included here.