

V&V Reference Report

L2 ASCDS Version : 8.4.5

Observation 61984 - L2 Version 4
Chandra X-Ray Center

L2 Processing Date : Aug 30 2012

Contents

1	Front	2
2	OBI	3
2.1	OBI	3
2.1.1	Images	3
2.1.2	Bias	3
2.1.3	Parameters	4
2.1.4	Events	4
2.2	Compared Parameters	5
2.3	Star Slots	6
2.4	FID Slots	6
A	Summary	7
A.1	Status	7
A.2	Comments	7

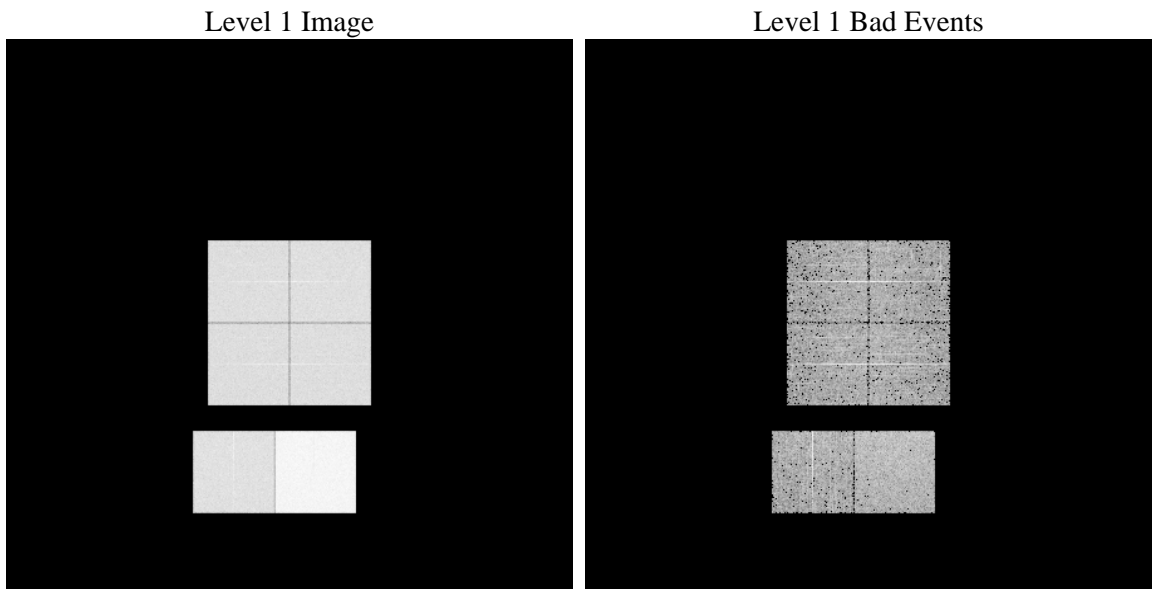
1 Front

seq_num	 	Sequence number
obs_id	61984	Observation id
title	ACIS-012367 diagnostics	Proposal title
observer	CHANDRA engineering request/realtime commanding	Principal investig
object	 	Source name
dtcycle	0	
cycle	P	events from which exps? Prim/Second/Both
ra_targ	0.0	Observer's specified target RA [deg]
dec_targ	0.0	Observer's specified target Dec [deg]
ra_nom	171.13838669158	Nominal RA [deg]
dec_nom	-47.917680355868	Nominal Dec [deg]
roll_nom	221.93270950456	Nominal Roll [deg]
revision	4	Processing version of data
ontime	5523.5088692904	Sum of GTIs [s]
livetime	5453.5668741297	Livetime [s]
ontime0	2457.481825605	Sum of GTIs [s]
ontime1	2518.2857799679	Sum of GTIs [s]
ontime2	2330.9992756695	Sum of GTIs [s]
ontime3	2363.5737956911	Sum of GTIs [s]
ontime6	2537.7321994603	Sum of GTIs [s]
ontime7	5523.5088692904	Sum of GTIs [s]
l2events	1368220	Number of level 2 events

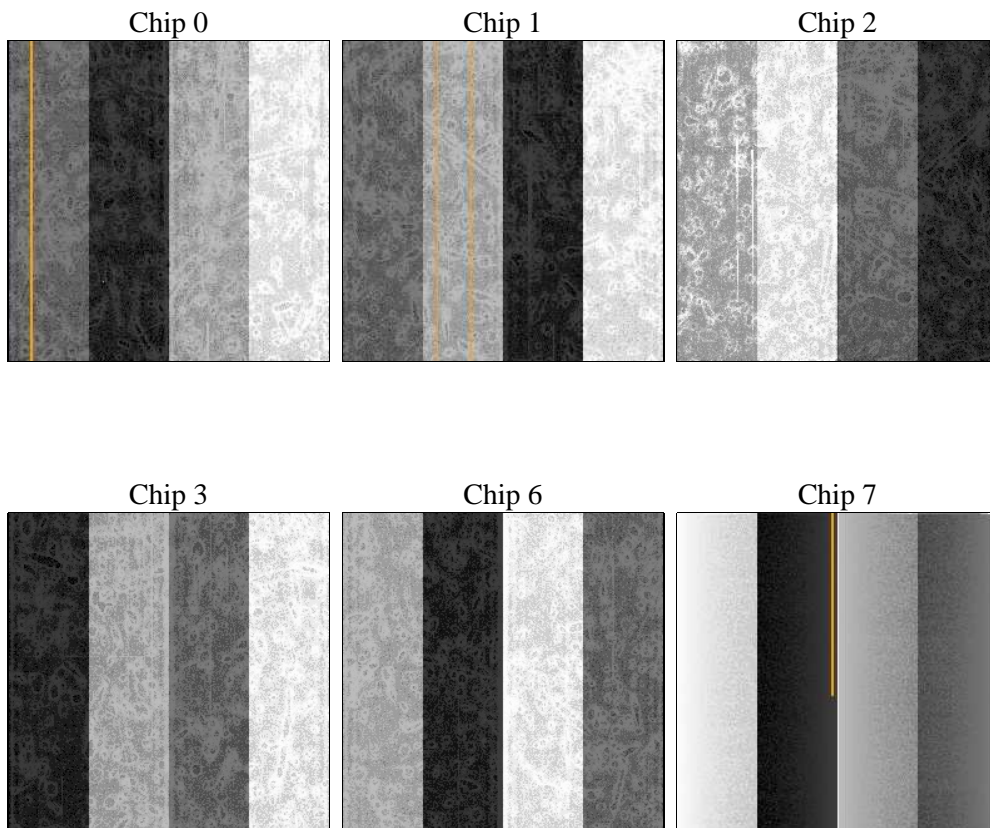
2 OBI

2.1 OBI

2.1.1 Images



2.1.2 Bias



2.1.3 Parameters

obi_num	0	Obi number	sched_exp_time	0.0	[s] Scheduled observation exposure time
ascdsver	8.4.5	Processing system revision	ontime	5523.5088692904	Sum of GTIs [s]
caldbver	4.5.1.1	 	ontime0	2457.481825605	Sum of GTIs [s]
date	2012-08-30T23:07:47	Date and time of file creation	ontime1	2518.2857799679	Sum of GTIs [s]
revision	4	Processing version of data	ontime2	2330.9992756695	Sum of GTIs [s]
			ontime3	2363.5737956911	Sum of GTIs [s]
			ontime6	2537.7321994603	Sum of GTIs [s]
			ontime7	5523.5088692904	Sum of GTIs [s]
			l1events	1554026	Number of level 1 events

2.1.4 Events

	ccd 0	ccd 1	ccd 2	ccd 3	ccd 6	ccd 7		ccd 0	ccd 1	ccd 2	ccd 3	ccd 6	ccd 7
level 1 events	212258	218936	206192	209398	231463	475779	grade 0 events	106877	110937	104415	106645	115606	116018
rejected events	19031	19268	19558	20309	21348	28571		50%	50%	50%	50%	49%	24%
rejected %	8%	8%	9%	9%	9%	6%	grade 1 events	486	578	550	538	559	315
								0%	0%	0%	0%	0%	0%
							grade 2 events	34423	35167	32892	33242	36330	99393
								16%	16%	15%	15%	15%	20%
							grade 3 events	12375	12712	11754	11674	12937	45776
								5%	5%	5%	5%	5%	9%
							grade 4 events	12174	12684	11732	12109	12904	45929
								5%	5%	5%	5%	5%	9%
							grade 5 events	1448	1441	1330	1423	1625	6102
								0%	0%	0%	0%	0%	1%
							grade 6 events	28102	28982	26648	26523	33409	141964
								13%	13%	12%	12%	14%	29%
							grade 7 events	16373	16435	16871	17244	18093	20282
								7%	7%	8%	8%	7%	4%

2.2 Compared Parameters

Parameter	Planned	Actual
Instrument	ACIS	ACIS
Detector	ACIS-012367	ACIS-012367
Grating	NONE	NONE
Data mode	FAINT	FAINT
Observation mode	SECONDARY	SECONDARY
[deg] Pointing RA	0	171.1383866915803
[deg] Pointing Dec	0	-47.91768035586755
[deg] Pointing Roll	0.0	221.9327095045629
[mm] SIM focus pos	-0.782348	-0.7809083437167272
[mm] SIM defocus	0	0.7524282956875696
[mm] SIM translation stage pos	-233.592463	250.466033080201
[mm] SIM translation stage offset	0	-0.01005468664627074
[s] Observation start time (MET)	81135508.79473899	81135508.026273
Observation start date	2000-07-28T01:38:29	2000-07-28T01:38:28
[s] Observation end time (MET)	81146019.14512999	81146018.376664
Observation end date	2000-07-28T04:33:39	2000-07-28T04:33:38
Read mode	TIMED	TIMED

Parameter	Planned	Actual
Obspar format version number	7	7
Obspar file type	PREDICTED	ACTUAL
Obspar update status	NONE	UPDATED
On-chip summing requested	N	N
Subarray requested	NONE	NONE
Alternating exposures requested	N	N
[s] Primary exposure time	3.2	3.2

2.3 Star Slots

2.4 FID Slots

A Summary

A.1 Status

V&V Scientist	Beth Sundheim
V&V Date (YYYY-MM-DD)	2012.09.05
V&V Edition	1
V&V Disposition and Status	OK
V&V Charge Time	5.5235088692904

A.2 Comments