

V&V Reference Report

L2 ASCDS Version : 8.4.5

Observation 61644 - L2 Version 3
Chandra X-Ray Center

L2 Processing Date : Sep 18 2012

Contents

1	Front	2
2	OBI	3
2.1	OBI	3
2.1.1	Images	3
2.1.2	Bias	3
2.1.3	Parameters	4
2.1.4	Events	4
2.2	Compared Parameters	5
2.3	Star Slots	6
2.4	FID Slots	6
A	Summary	7
A.1	Status	7
A.2	Comments	7

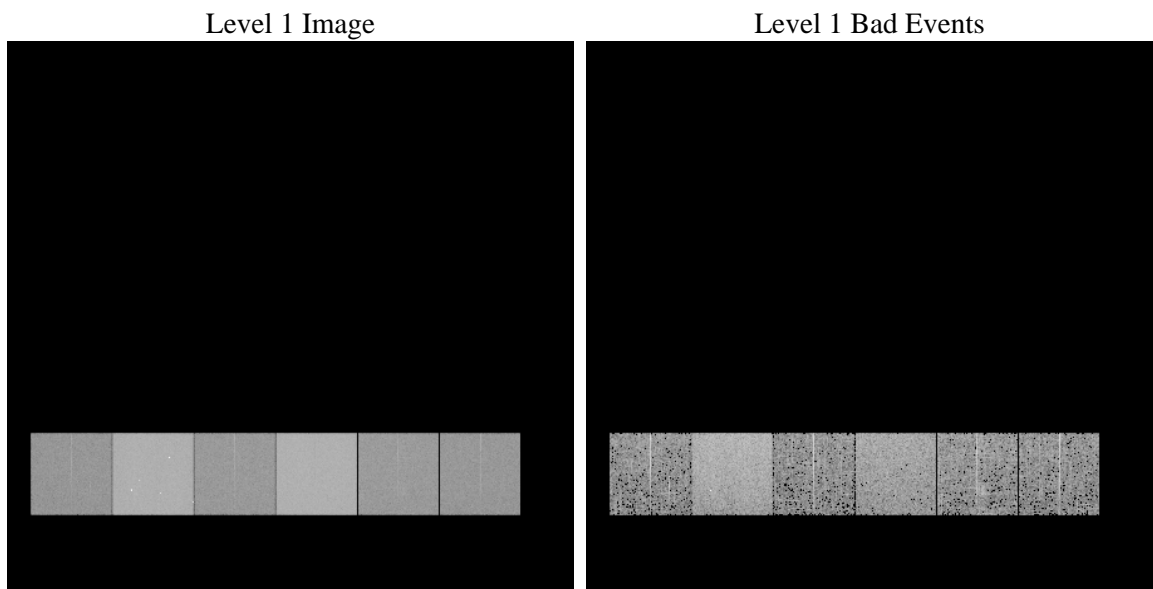
1 Front

seq_num	 	Sequence number
obs_id	61644	Observation id
title	ACIS-456789 diagnostics	Proposal title
observer	CHANDRA engineering request/realtime commanding	Principal investig
object	 	Source name
dtcycle	0	
cycle	P	events from which exps? Prim/Second/Both
ra_targ	0.0	Observer's specified target RA [deg]
dec_targ	0.0	Observer's specified target Dec [deg]
ra_nom	279.98066176484	Nominal RA [deg]
dec_nom	-19.977790913177	Nominal Dec [deg]
roll_nom	96.5452119738	Nominal Roll [deg]
revision	3	Processing version of data
ontime	5269.5326362401	Sum of GTIs [s]
livetime	5202.8066410684	Livetime [s]
ontime4	2116.3970110118	Sum of GTIs [s]
ontime5	5638.9606656283	Sum of GTIs [s]
ontime6	2255.3198571056	Sum of GTIs [s]
ontime7	5269.5326362401	Sum of GTIs [s]
ontime8	2310.3353473246	Sum of GTIs [s]
ontime9	2174.7358305305	Sum of GTIs [s]
l2events	1233778	Number of level 2 events

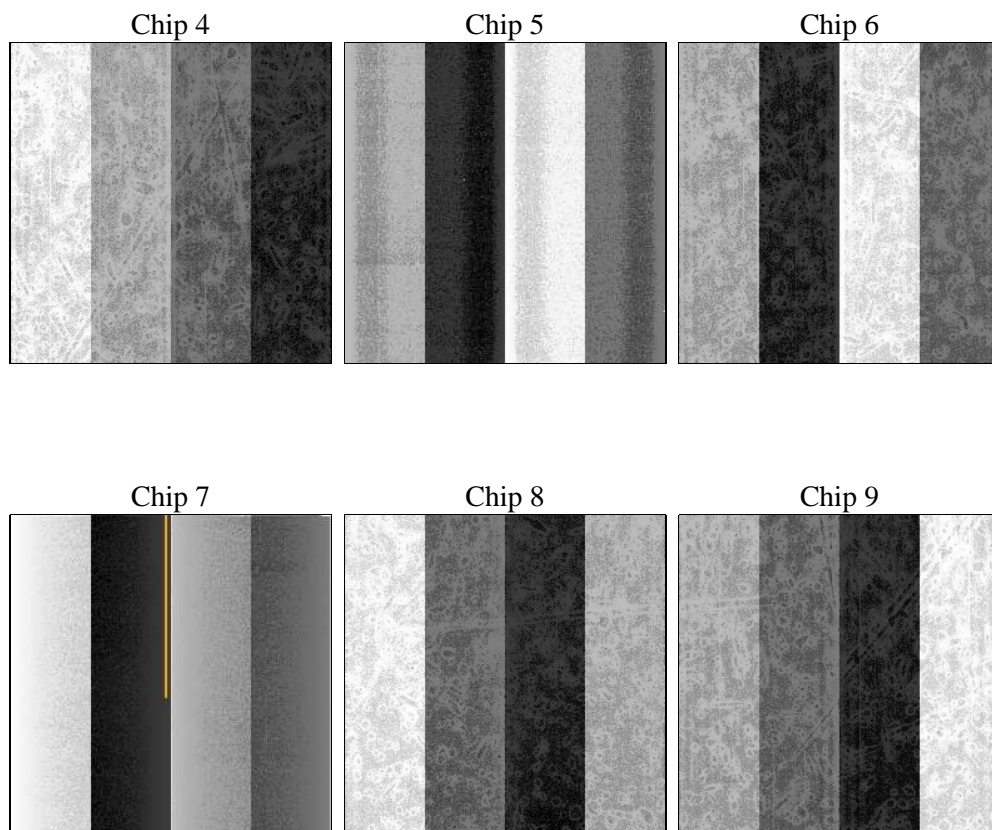
2 OBI

2.1 OBI

2.1.1 Images



2.1.2 Bias



2.1.3 Parameters

obi_num	0	Obi number	sched_exp_time	0.0	[s] Scheduled observation exposure time
ascdsver	8.4.5	Processing system revision	ontime	5269.5326362401	Sum of GTIs [s]
caldsver	4.5.1.1	 	ontime4	2116.3970110118	Sum of GTIs [s]
date	2012-09-18T22:36:52	Date and time of file creation	ontime5	5638.9606656283	Sum of GTIs [s]
revision	3	Processing version of data	ontime6	2255.3198571056	Sum of GTIs [s]
			ontime7	5269.5326362401	Sum of GTIs [s]
			ontime8	2310.3353473246	Sum of GTIs [s]
			ontime9	2174.7358305305	Sum of GTIs [s]
			l1events	1430852	Number of level 1 events

2.1.4 Events

	ccd 4	ccd 5	ccd 6	ccd 7	ccd 8	ccd 9		ccd 4	ccd 5	ccd 6	ccd 7	ccd 8	ccd 9
level 1 events	153662	377251	173376	384700	180392	161471	grade 0 events	76609	88963	85116	92331	88268	78549
rejected events	17906	38927	17621	27339	20127	17830		49%	23%	49%	24%	48%	48%
rejected %	11%	10%	10%	7%	11%	11%	grade 1 events	407	246	432	234	421	418
								0%	0%	0%	0%	0%	0%
							grade 2 events	24127	115590	27202	79613	27957	25455
								15%	30%	15%	20%	15%	15%
							grade 3 events	8465	23315	9485	36357	10102	8926
								5%	6%	5%	9%	5%	5%
							grade 4 events	8408	22890	9699	36231	10248	8839
								5%	6%	5%	9%	5%	5%
							grade 5 events	1156	7538	1379	5860	1537	1401
								0%	1%	0%	1%	0%	0%
							grade 6 events	18147	87566	24253	112829	23690	21872
								11%	23%	13%	29%	13%	13%
							grade 7 events	16343	31143	15810	21245	18169	16011
								10%	8%	9%	5%	10%	9%

2.2 Compared Parameters

Parameter	Planned	Actual	Parameter	Planned	Actual
Instrument	ACIS	ACIS	Obspar format version number	7	7
Detector	ACIS-456789	ACIS-456789	Obspar file type	PREDICTED	ACTUAL
Grating	NONE	NONE	Obspar update status	NONE	UPDATED
Data mode	FAINT	FAINT	On-chip summing requested	N	N
Observation mode	SECONDARY	SECONDARY	Subarray requested	NONE	NONE
[deg] Pointing RA	0	279.9806617648372	Alternating exposures requested	N	N
[deg] Pointing Dec	0	-19.97779091317711	[s] Primary exposure time	0.000000	3.2
[deg] Pointing Roll	0.0	96.54521197379998			
[mm] SIM focus pos	-0.684267	-0.6828225247311905			
[mm] SIM defocus	0	0.8505141146731063			
[mm] SIM translation stage pos	-190.132523	250.466033080201			
[mm] SIM translation stage offset	0	-0.01005468664627074			
[s] Observation start time (MET)	105765519.685	105765518.91629			
Observation start date	2001-05-09T03:18:40	2001-05-09T03:18:38			
[s] Observation end time (MET)	105777290.785	105777290.01675			
Observation end date	2001-05-09T06:34:51	2001-05-09T06:34:50			
Read mode	TIMED	TIMED			

2.3 Star Slots

2.4 FID Slots

A Summary

A.1 Status

V&V Scientist	Beth Sundheim
V&V Date (YYYY-MM-DD)	2012.09.20
V&V Edition	1
V&V Disposition and Status	OK
V&V Charge Time	5.2695326362401

A.2 Comments