

# V&V Reference Report

## L2 ASCDS Version : 8.4.5

Observation 61384 - L2 Version 3  
Chandra X-Ray Center

L2 Processing Date : Sep 29 2012

## Contents

<b>1</b>	<b>Front</b>	<b>2</b>
<b>2</b>	<b>OBI</b>	<b>3</b>
2.1	OBI . . . . .	3
2.1.1	Images . . . . .	3
2.1.2	Bias . . . . .	3
2.1.3	Parameters . . . . .	4
2.1.4	Events . . . . .	4
2.2	Compared Parameters . . . . .	5
2.3	Star Slots . . . . .	6
2.4	FID Slots . . . . .	6
<b>A</b>	<b>Summary</b>	<b>7</b>
A.1	Status . . . . .	7
A.2	Comments . . . . .	7

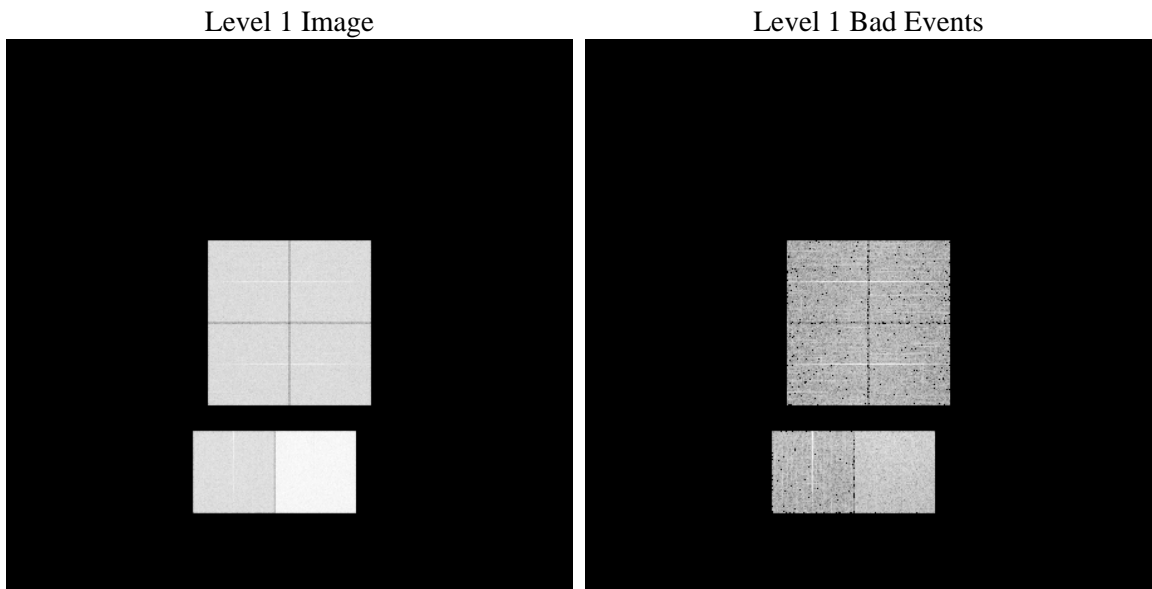
# 1 Front

seq_num	&#160	Sequence number
obs_id	61384	Observation id
title	ACIS-012367 diagnostics	Proposal title
observer	CHANDRA engineering request/realtime commanding	Principal investig
object	&#160	Source name
dtcycle	0	&#160
cycle	P	events from which exps? Prim/Second/Both
ra_targ	0.0	Observer's specified target RA [deg]
dec_targ	0.0	Observer's specified target Dec [deg]
ra_nom	142.96451802077	Nominal RA [deg]
dec_nom	56.020666234805	Nominal Dec [deg]
roll_nom	101.02736432727	Nominal Roll [deg]
revision	3	Processing version of data
ontime	8117.3759409189	Sum of GTIs [s]
livetime	8014.588839058	Livetime [s]
ontime0	3098.0920647234	Sum of GTIs [s]
ontime1	3148.9542139769	Sum of GTIs [s]
ontime2	2999.8669326156	Sum of GTIs [s]
ontime3	3058.2054432184	Sum of GTIs [s]
ontime6	3282.9539361149	Sum of GTIs [s]
ontime7	8117.3759409189	Sum of GTIs [s]
l2events	1306710	Number of level 2 events

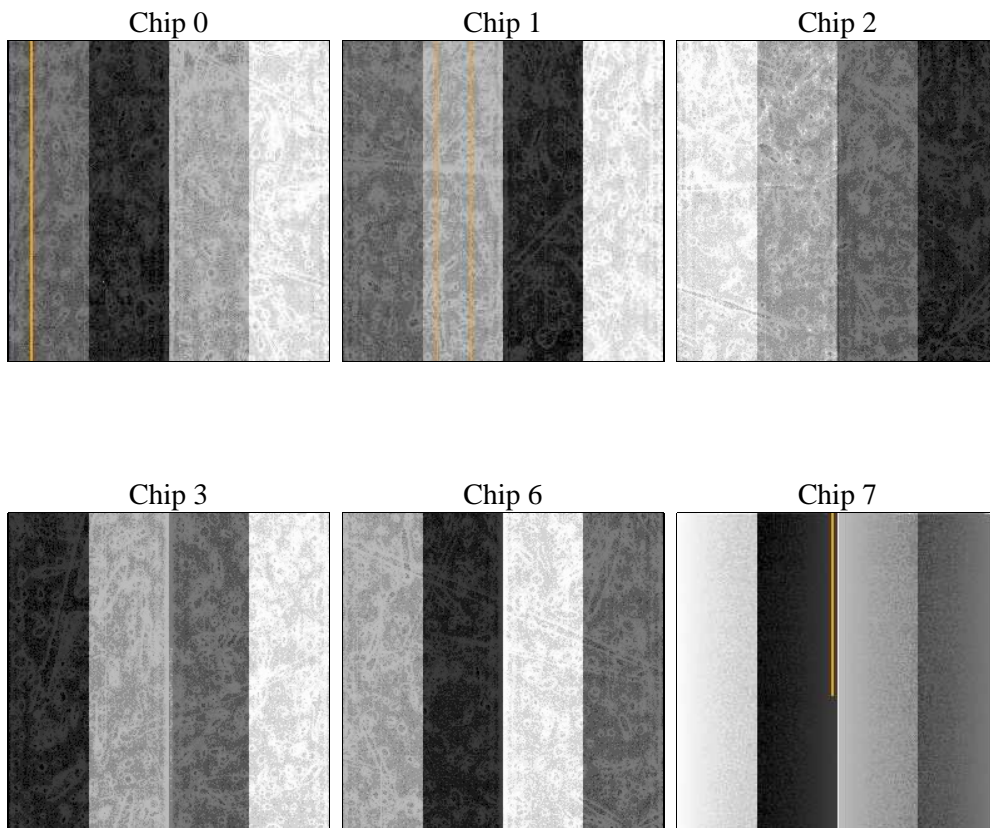
## 2 OBI

### 2.1 OBI

#### 2.1.1 Images



#### 2.1.2 Bias



### 2.1.3 Parameters

obi_num	0	Obi number	sched_exp_time	0.0	[s] Scheduled observation exposure time
ascdsver	8.4.5	Processing system revision	ontime	8117.3759409189	Sum of GTIs [s]
caldsver	4.5.2	&#160	ontime0	3098.0920647234	Sum of GTIs [s]
date	2012-09-29T05:57:06	Date and time of file creation	ontime1	3148.9542139769	Sum of GTIs [s]
revision	3	Processing version of data	ontime2	2999.8669326156	Sum of GTIs [s]
			ontime3	3058.2054432184	Sum of GTIs [s]
			ontime6	3282.9539361149	Sum of GTIs [s]
			ontime7	8117.3759409189	Sum of GTIs [s]
			l1events	1542955	Number of level 1 events

### 2.1.4 Events

	ccd 0	ccd 1	ccd 2	ccd 3	ccd 6	ccd 7		ccd 0	ccd 1	ccd 2	ccd 3	ccd 6	ccd 7
level 1 events	197789	202458	195573	198853	222574	525708	grade 0 events	96041	98166	95227	97707	107005	121942
rejected events	24570	26042	25754	25318	29028	50692		48%	48%	48%	49%	48%	23%
rejected %	12%	12%	13%	12%	13%	9%	grade 1 events	523	487	518	540	537	326
								0%	0%	0%	0%	0%	0%
							grade 2 events	30807	31636	30324	31025	33744	105698
								15%	15%	15%	15%	15%	20%
							grade 3 events	11026	11283	10793	11157	12183	48412
								5%	5%	5%	5%	5%	9%
							grade 4 events	11250	11504	10654	11041	12116	48453
								5%	5%	5%	5%	5%	9%
							grade 5 events	1613	1697	1566	1712	1919	9283
								0%	0%	0%	0%	0%	1%
							grade 6 events	25963	25789	24630	24231	31139	155886
								13%	12%	12%	12%	13%	29%
							grade 7 events	20566	21896	21861	21440	23931	35708
								10%	10%	11%	10%	10%	6%

## 2.2 Compared Parameters

Parameter	Planned	Actual	Parameter	Planned	Actual
Instrument	ACIS	ACIS	Obspar format version number	7	7
Detector	ACIS-012367	ACIS-012367	Obspar file type	PREDICTED	ACTUAL
Grating	NONE	NONE	Obspar update status	NONE	UPDATED
Data mode	FAINT	FAINT	On-chip summing requested	N	N
Observation mode	SECONDARY	SECONDARY	Subarray requested	NONE	NONE
[deg] Pointing RA	0	142.964518020767	Alternating exposures requested	N	N
[deg] Pointing Dec	0	56.02066623480545	[s] Primary exposure time	3.2	3.2
[deg] Pointing Roll	0.0	101.0273643272747			
[mm] SIM focus pos	-0.782348	-0.6828225247311905			
[mm] SIM defocus	0	0.8505141146731063			
[mm] SIM translation stage pos	-233.592463	250.466033080201			
[mm] SIM translation stage offset	0	-0.01005468664627074			
[s] Observation start time (MET)	124766673.184095	124766672.41565			
Observation start date	2001-12-15T01:24:33	2001-12-15T01:24:32			
[s] Observation end time (MET)	124787982.934947	124787982.1665			
Observation end date	2001-12-15T07:19:43	2001-12-15T07:19:42			
Read mode	TIMED	TIMED			

## 2.3 Star Slots

## 2.4 FID Slots

## A Summary

### A.1 Status

V&V Scientist	Beth Sundheim
V&V Date (YYYY-MM-DD)	2012.10.01
V&V Edition	1
V&V Disposition and Status	OK
V&V Charge Time	8.1173759409189

### A.2 Comments