

# V&V Reference Report

## L2 ASCDS Version : 8.5

Observation 6134 - L2 Version 4  
Chandra X-Ray Center

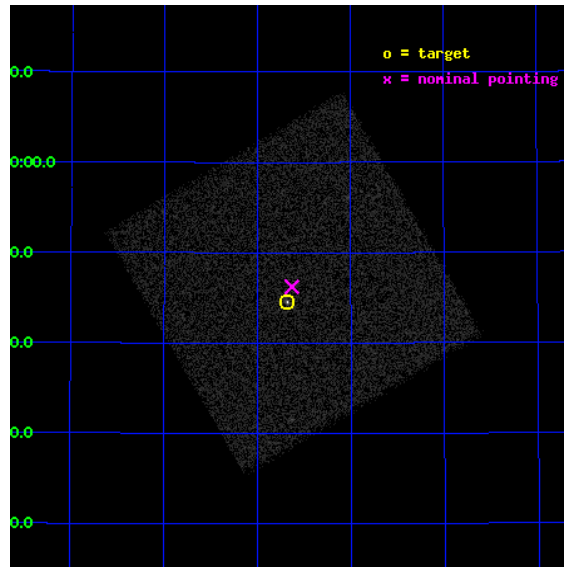
L2 Processing Date : Dec 12 2012

## Contents

<b>1</b>	<b>Front</b>	<b>2</b>
<b>2</b>	<b>OBI</b>	<b>3</b>
2.1	OBI . . . . .	3
2.1.1	Images . . . . .	3
2.1.2	Parameters . . . . .	4
2.1.3	Events . . . . .	4
2.2	Compared Parameters . . . . .	5
2.3	Aspect . . . . .	6
2.4	Star Slots . . . . .	9
2.4.1	Slot 3 . . . . .	9
2.4.2	Slot 4 . . . . .	10
2.4.3	Slot 5 . . . . .	11
2.4.4	Slot 6 . . . . .	12
2.4.5	Slot 7 . . . . .	13
2.5	FID Slots . . . . .	14
2.5.1	Slot 0 . . . . .	14
2.5.2	Slot 1 . . . . .	15
2.5.3	Slot 2 . . . . .	16
<b>A</b>	<b>Summary</b>	<b>17</b>
A.1	Status . . . . .	17
A.2	Comments . . . . .	17

# 1 Front

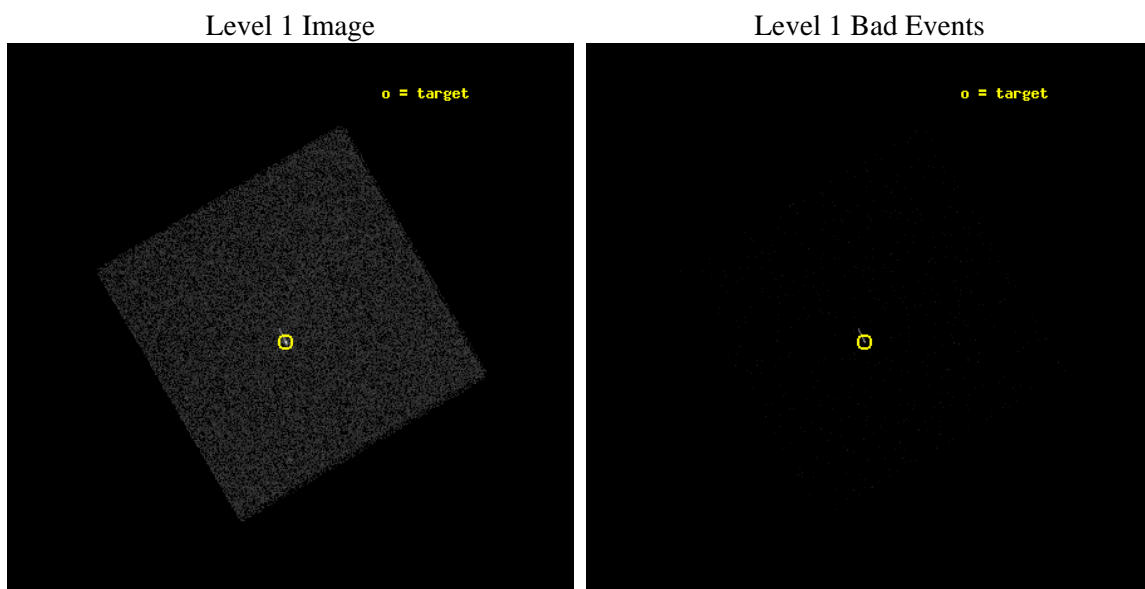
seq_num	290535	Sequence number
obs_id	6134	Observation id
title	AO5 Calibration Observations to Monitor the Spatial Variations in the HRC-I Gain	Proposal title
observer	Dr. CXC Calibration	Principal investigator
object	ArLac	Source name
ra_targ	332.17	Observer's specified target RA [deg]
dec_targ	45.742306	Observer's specified target Dec [deg]
ra_nom	332.15777762439	Nominal RA [deg]
dec_nom	45.770519649616	Nominal Dec [deg]
roll_nom	284.70167843448	Nominal Roll [deg]
revision	4	Processing version of data
ontime	1079.3250485361	[s]
livetime	1071.5378938372	Ontime multiplied by DTCOR
l2events	44115	Number of level 2 events



## 2 OBI

### 2.1 OBI

#### 2.1.1 Images



### 2.1.2 Parameters

obi_num	0	Obi number	sched_exp_time	900.000000	[s] Scheduled observation exposure time
ascdsver	8.5	Processing system revision	ontime	1079.3250485361	[s]
caldsver	4.5.4	&#160	l1events	82763	Number of level 1 events
date	2012-12-11T23:52:10	Date and time of file creation			
revision	4	Processing version of data			

### 2.1.3 Events

#### Level 1 Events

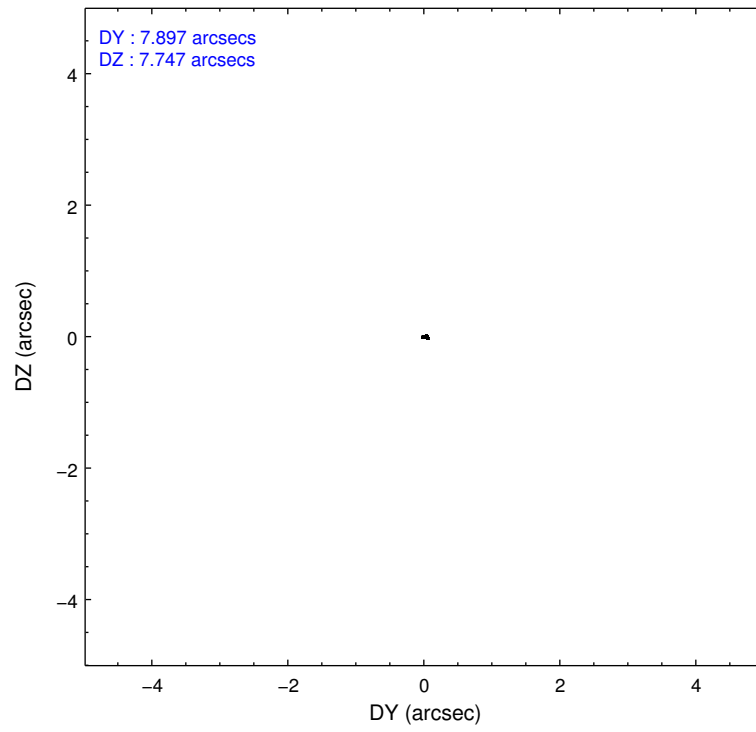
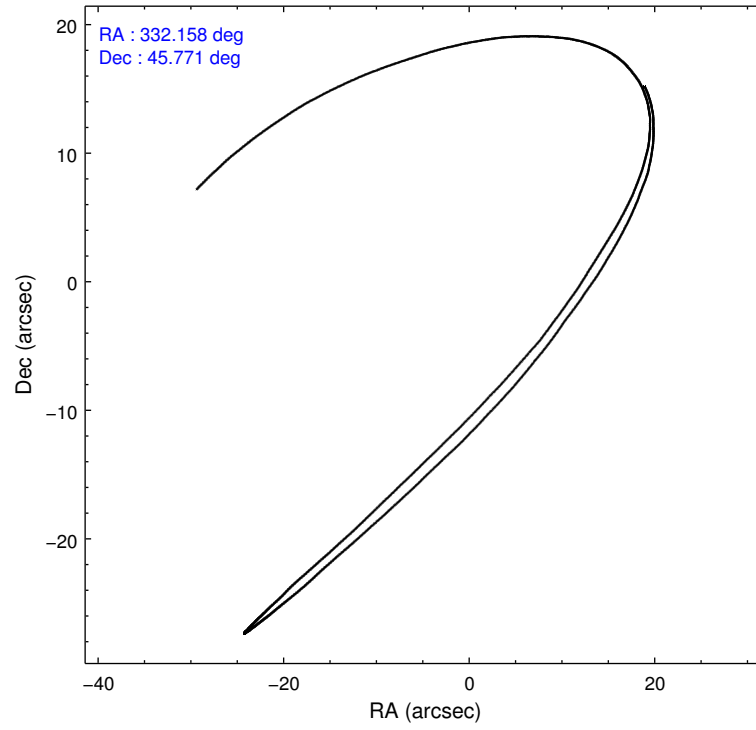
	<b>segment 0</b>
level 1 events	82763
rejected events	19480
rejected %	23%

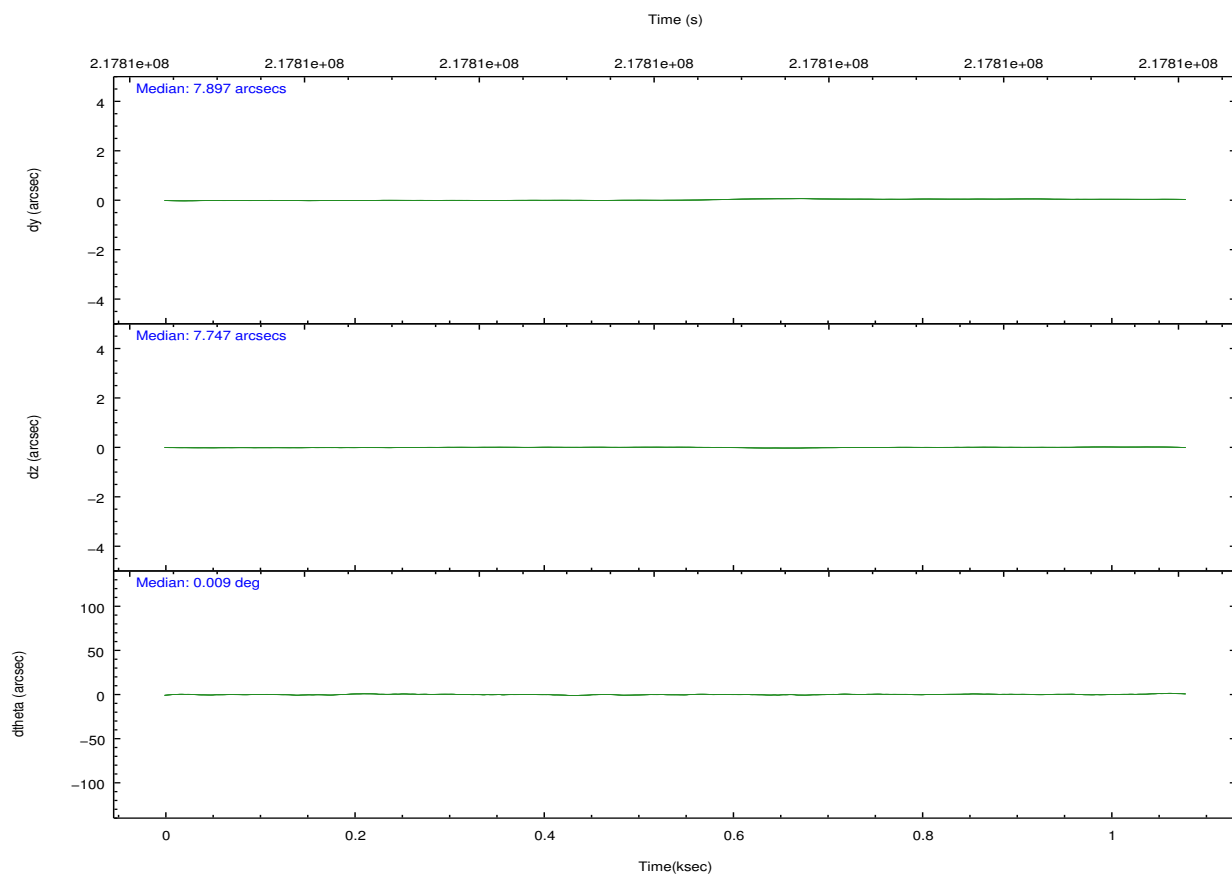
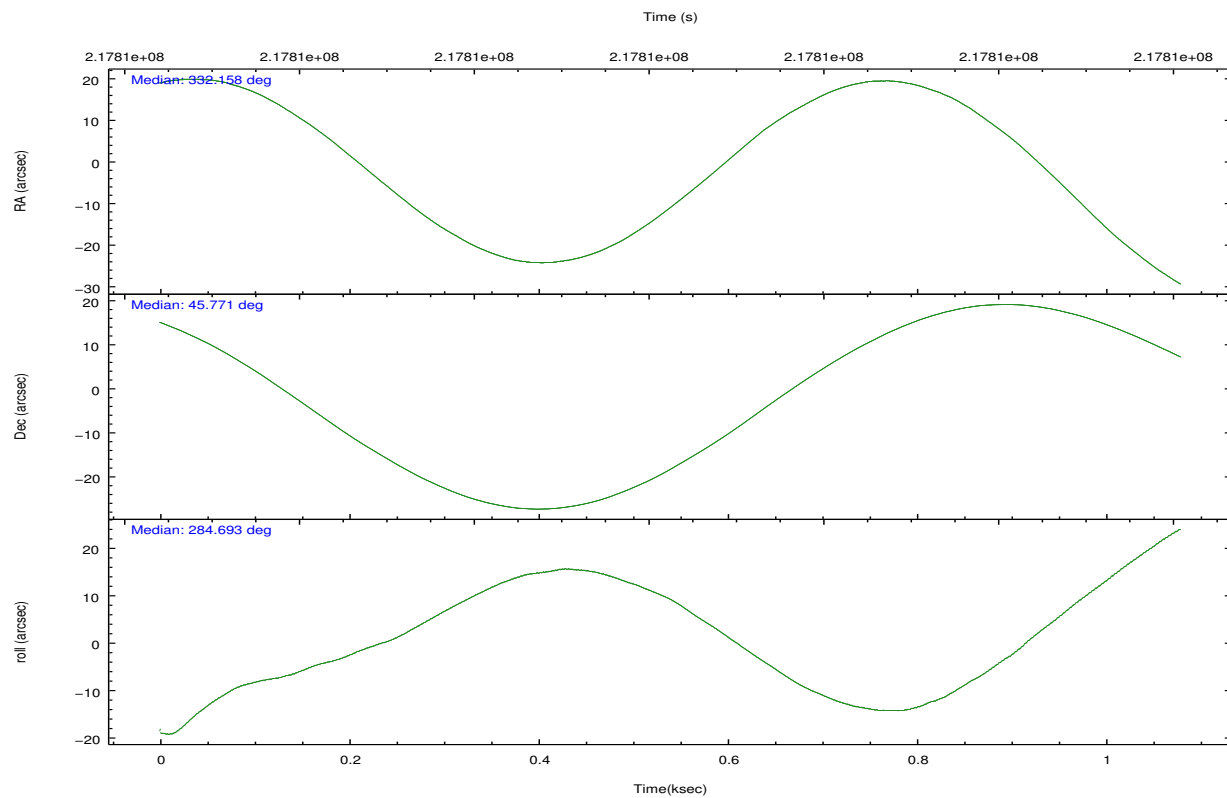
## 2.2 Compared Parameters

Parameter	Planned	Actual
Instrument	HRC	HRC
Detector	HRC-I	HRC-I
Grating	NONE	NONE
Data mode	OBSERVING	OBSERVING
Observation mode	POINTING	POINTING
[deg] Pointing RA	332.129001	332.1577776243864
[deg] Pointing Dec	45.789230	45.77051964961596
[deg] Pointing Roll	284.817820	284.7016784344821
[mm] SIM focus pos	-1.040293	-1.038866356238299
[mm] SIM defocus	0	0.001426264420575141
[mm] SIM translation stage pos	126.985494	126.9854943052878
[mm] SIM translation stage offset	0	-5.413686238853188e-06
[s] Observation start time (MET)	217805667.184000	217805291.3841
Observation start date	2004-11-25T21:33:23	2004-11-25T21:28:11
[s] Observation end time (MET)	217806567.184000	217806700.75916
Observation end date	2004-11-25T21:48:23	2004-11-25T21:51:40

Parameter	Planned	Actual
Obspar format version number	7	7
Obspar file type	PREDICTED	ACTUAL
Obspar update status	NONE	UPDATED

## 2.3 Aspect





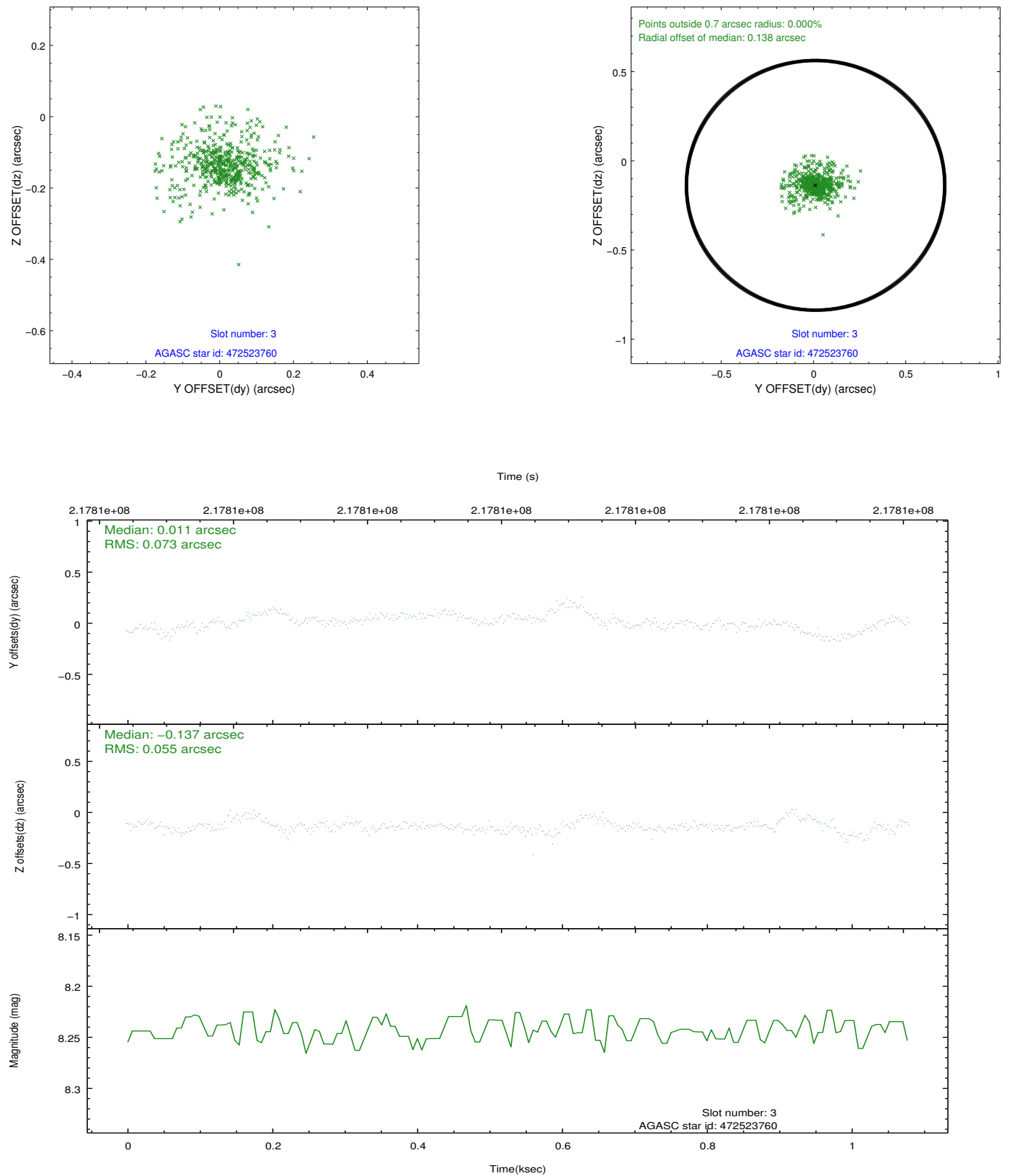
### Slot Statistics

slot	status	id	mag	n_pts	med_dy	med_dz	dr1	dr2	ra	dec	mean_y	mean_z
0	FID	HRC-I-1	7.00	264	-0.004	0.037	0.007	0.016	0.000000	0.000000	-763.54	-1295.62
1	FID	HRC-I-2	7.04	264	0.154	-0.125	0.006	0.011	0.000000	0.000000	846.36	-1302.27
2	FID	HRC-I-3	7.09	264	-0.031	-0.001	0.006	0.020	0.000000	0.000000	-1188.82	1003.98
3	GUIDE	472523760	8.24	528	0.011	-0.137	0.090	0.171	331.645363	45.403260	1027.52	-1538.13
4	GUIDE	472527720	7.02	528	0.180	-0.033	0.122	0.214	331.460205	45.112509	1916.49	-2268.48
5	GUIDE	472533912	9.16	528	-0.127	0.124	0.097	0.168	331.791136	46.368695	-2229.35	-283.80
6	GUIDE	472655152	9.44	527	0.033	0.022	0.199	0.838	332.504239	45.862991	-22.40	975.49
7	GUIDE	472659832	9.46	525	-0.050	0.063	0.157	0.249	332.780399	46.098139	-665.83	1857.98

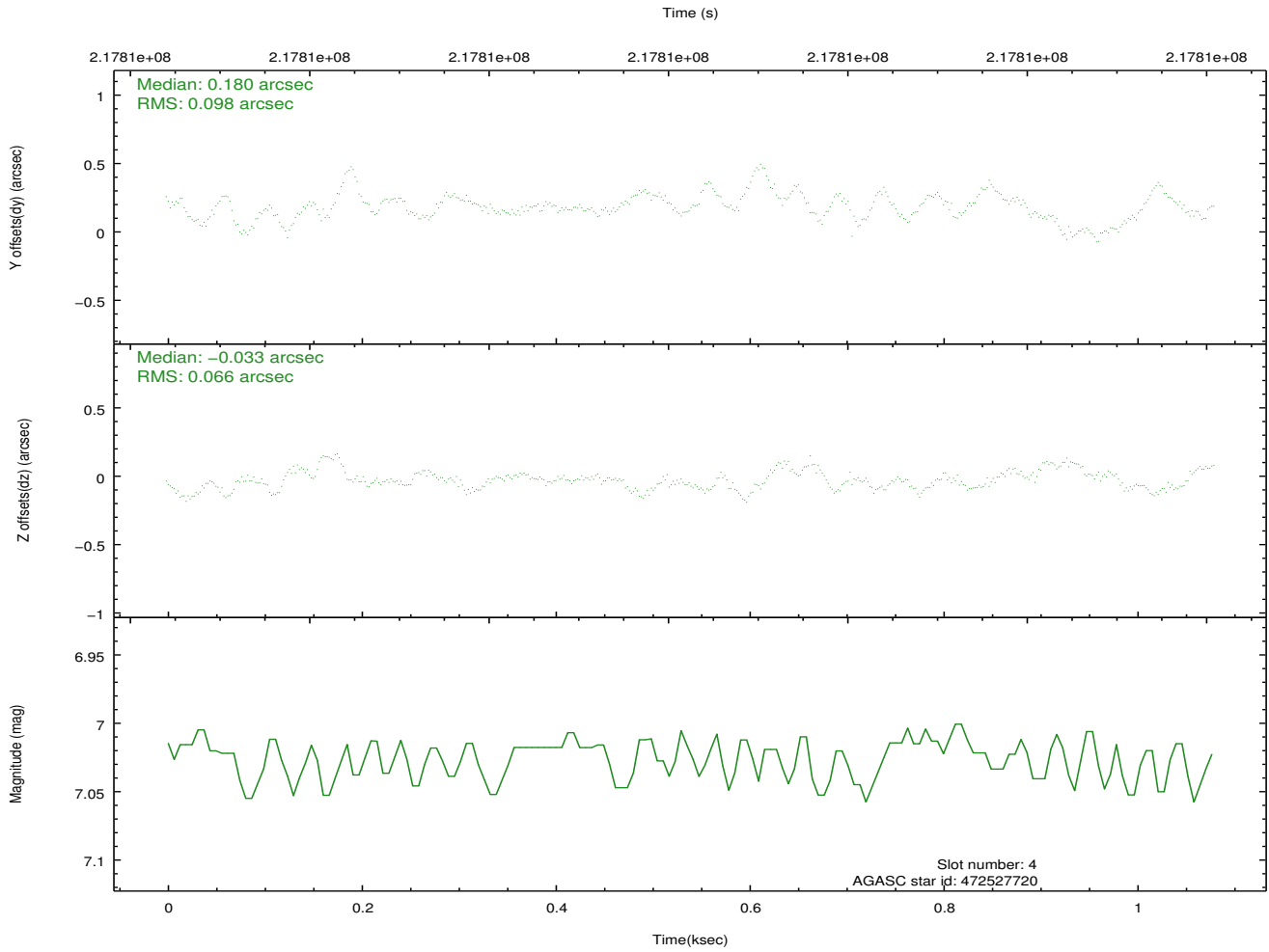
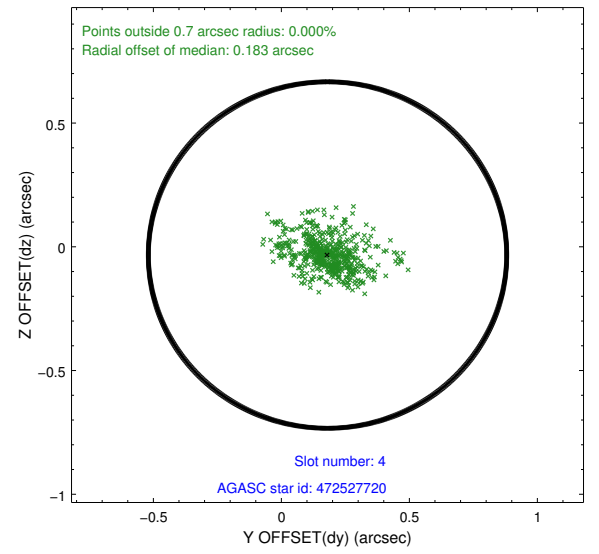
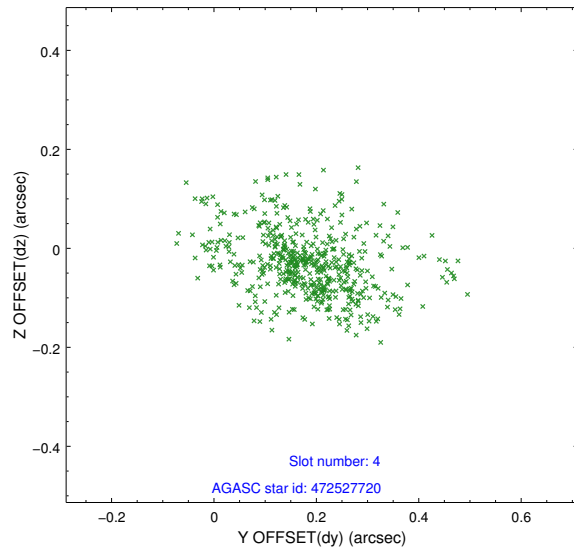


## 2.4 Star Slots

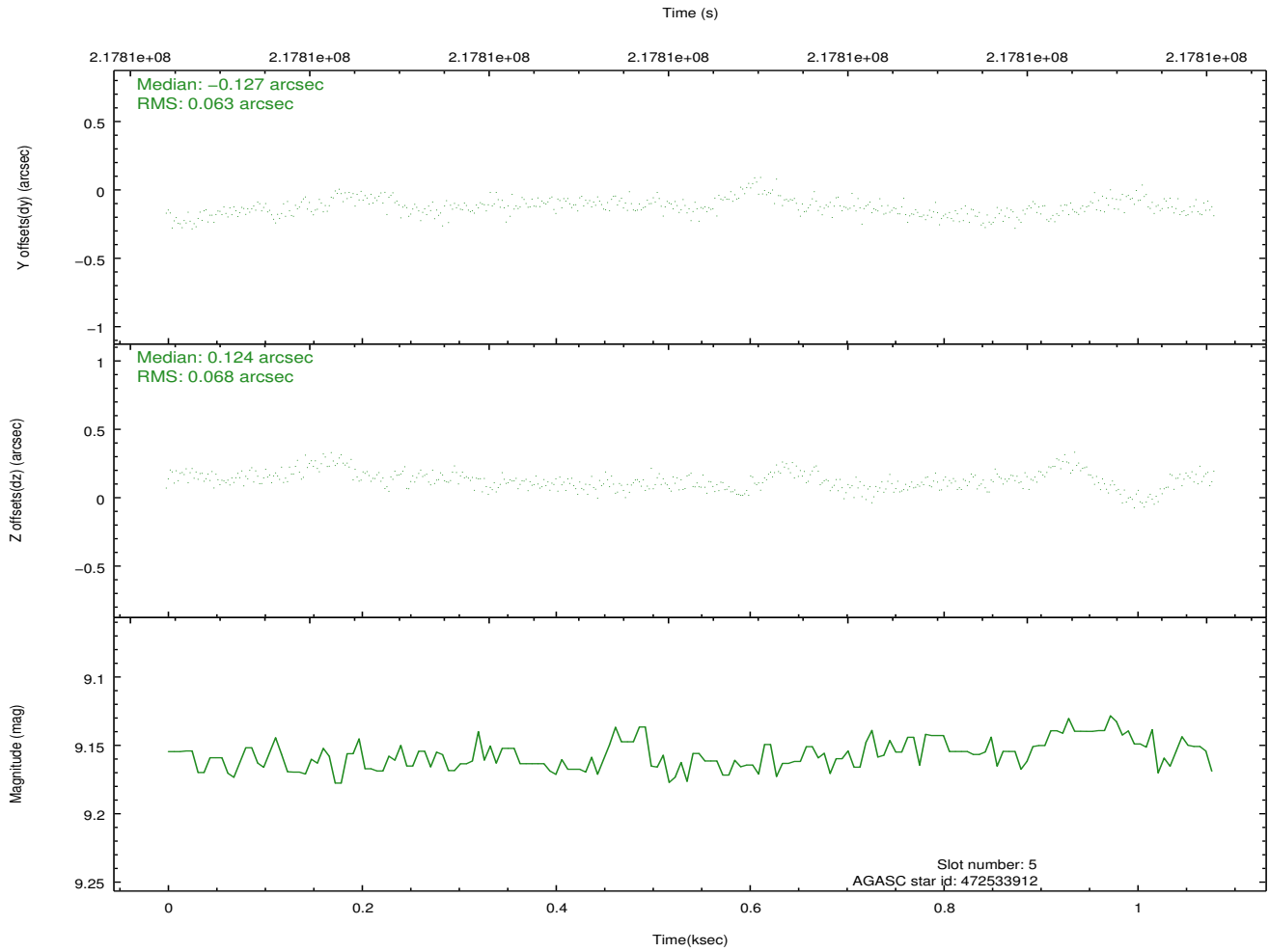
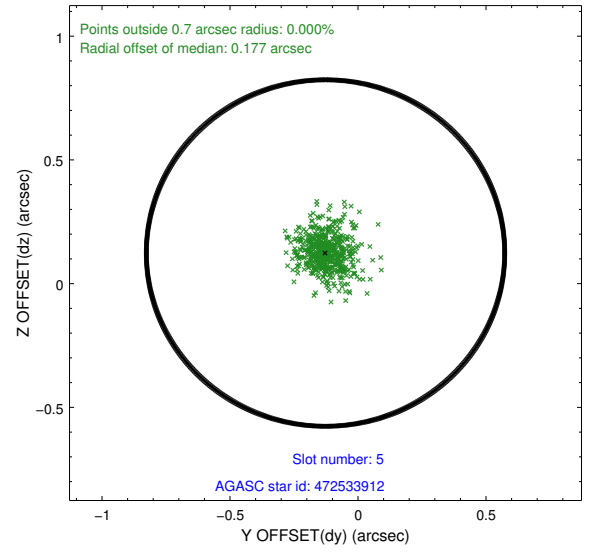
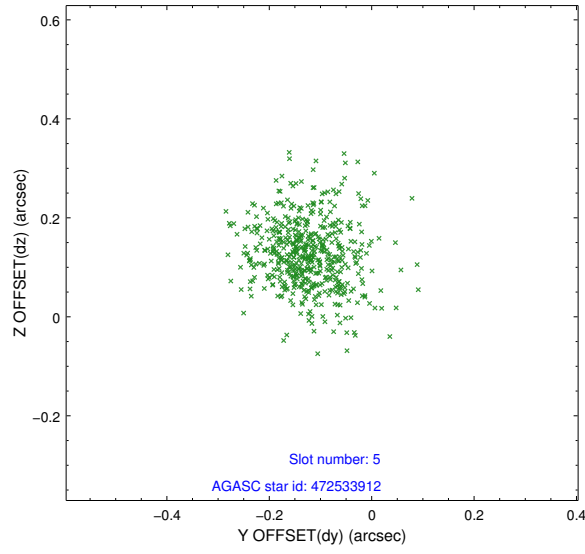
### 2.4.1 Slot 3



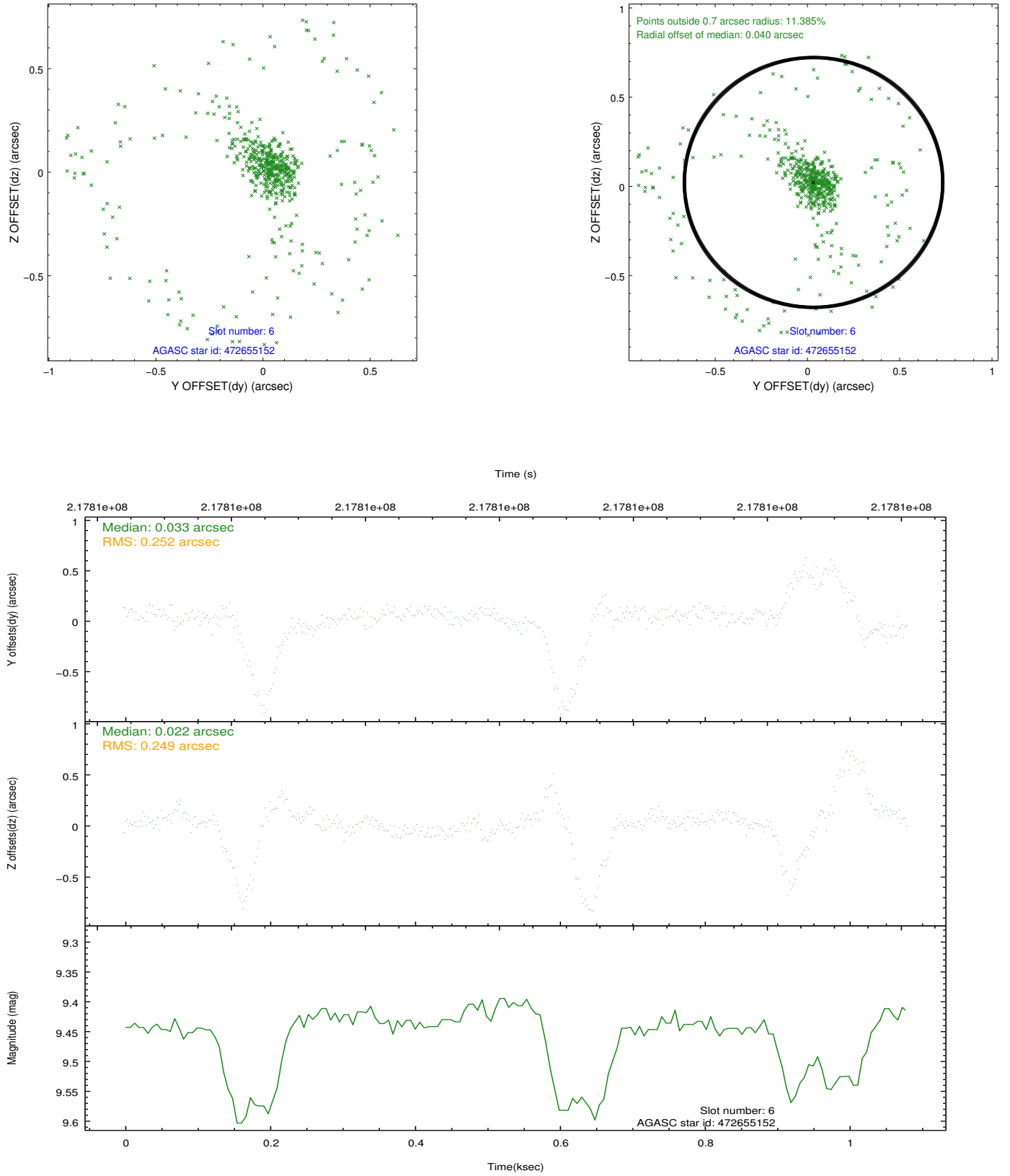
## 2.4.2 Slot 4



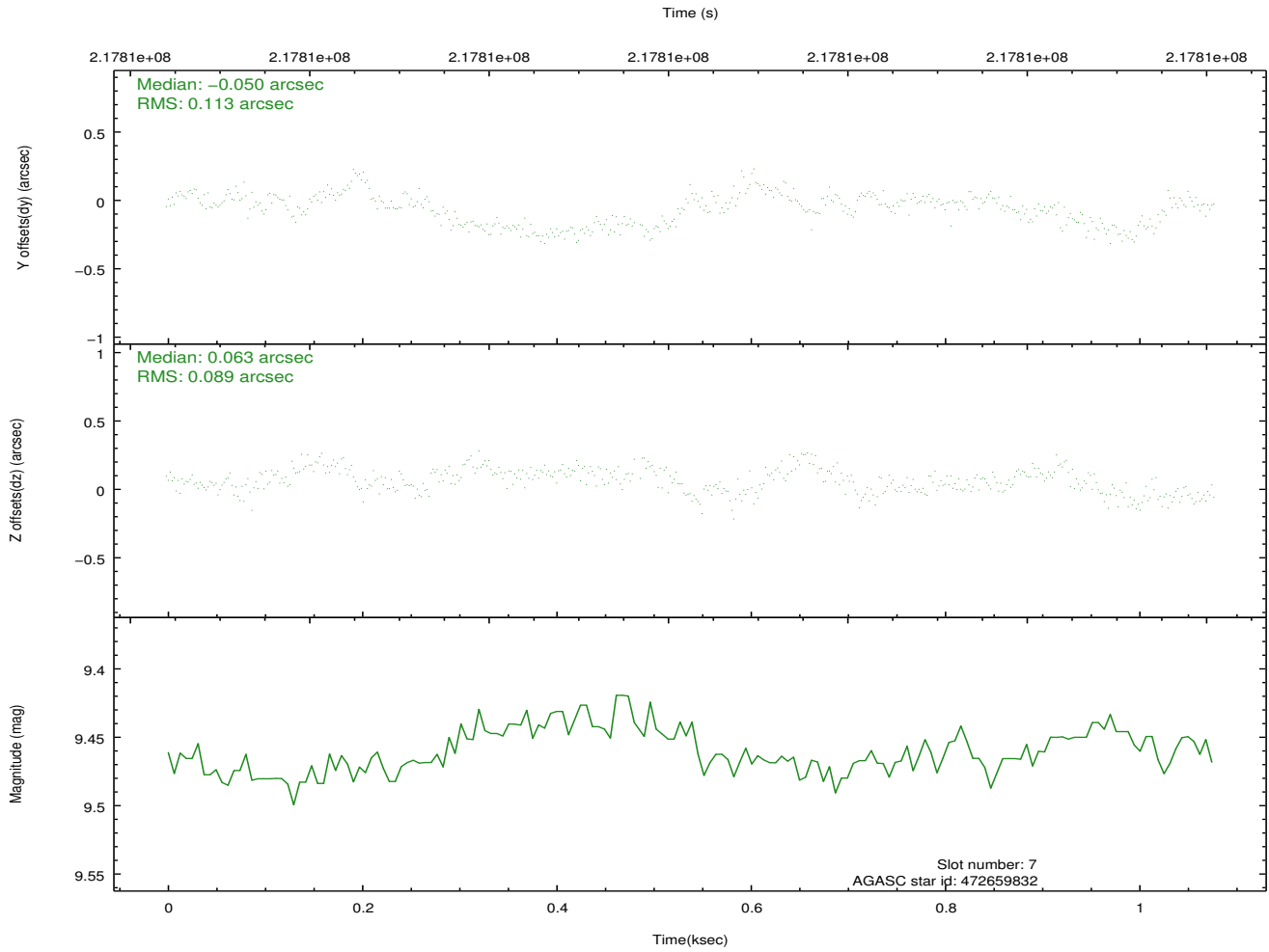
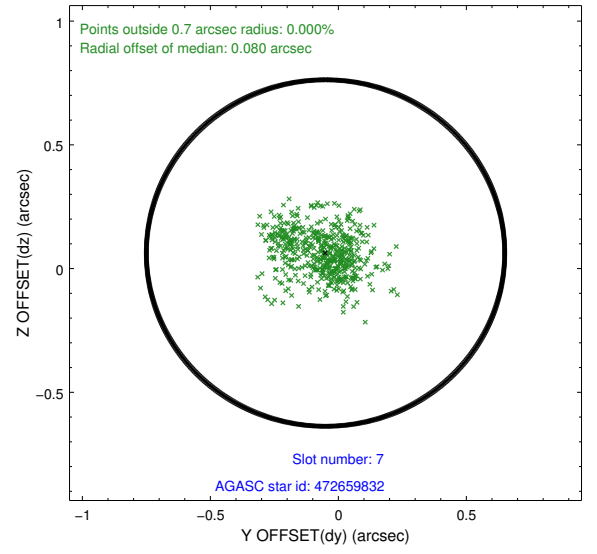
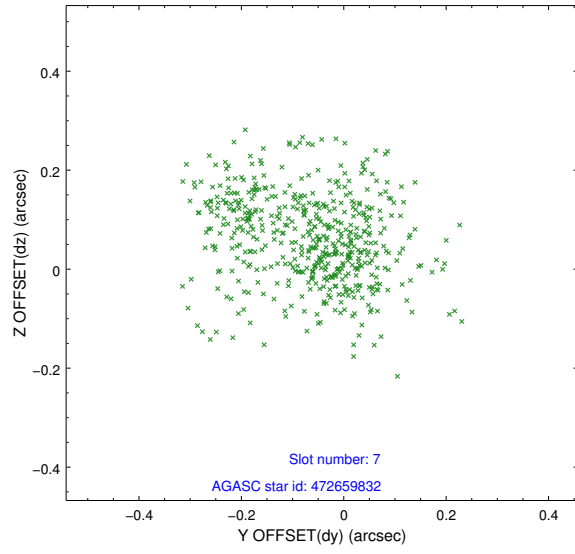
### 2.4.3 Slot 5



## 2.4.4 Slot 6

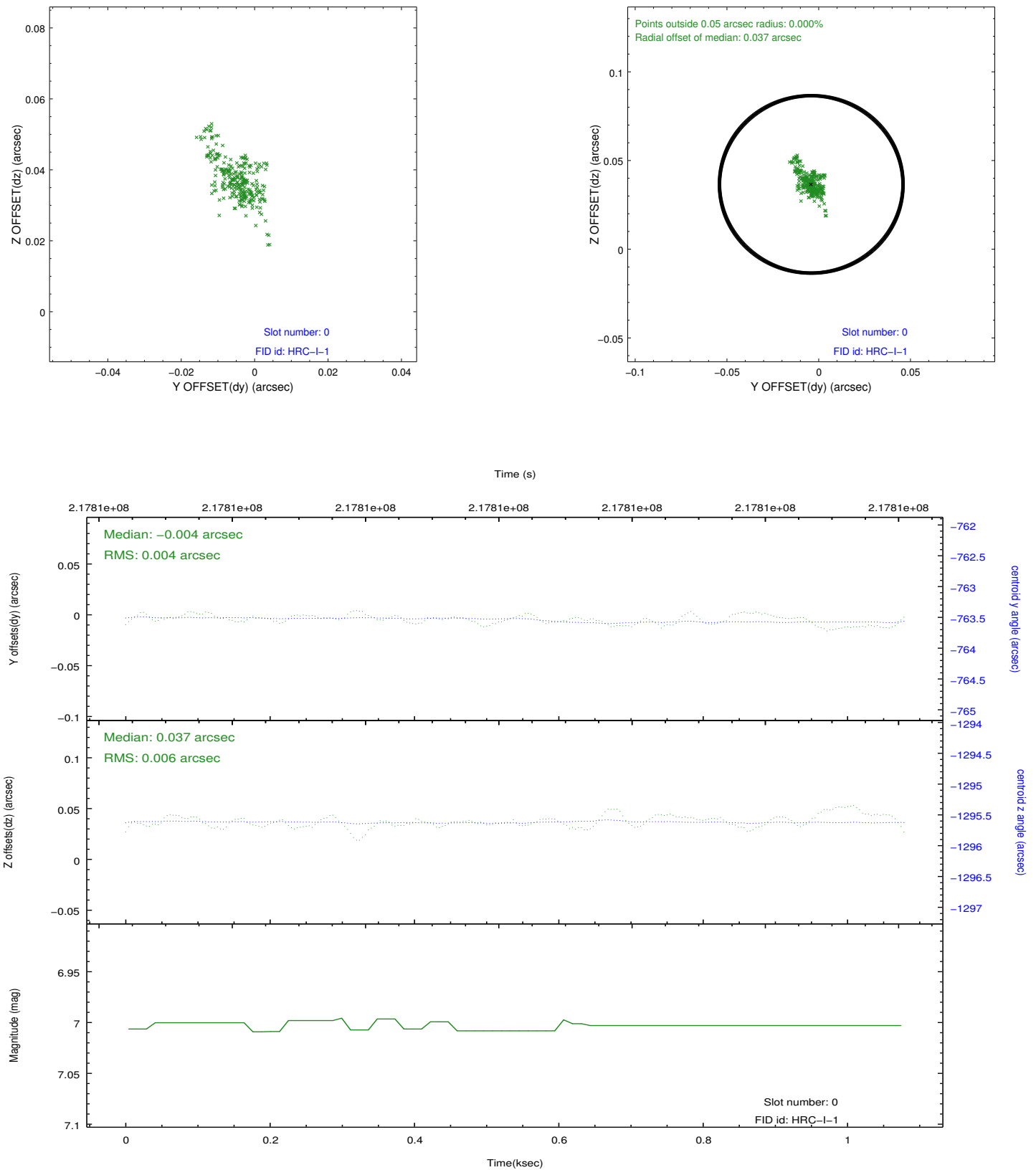


### 2.4.5 Slot 7

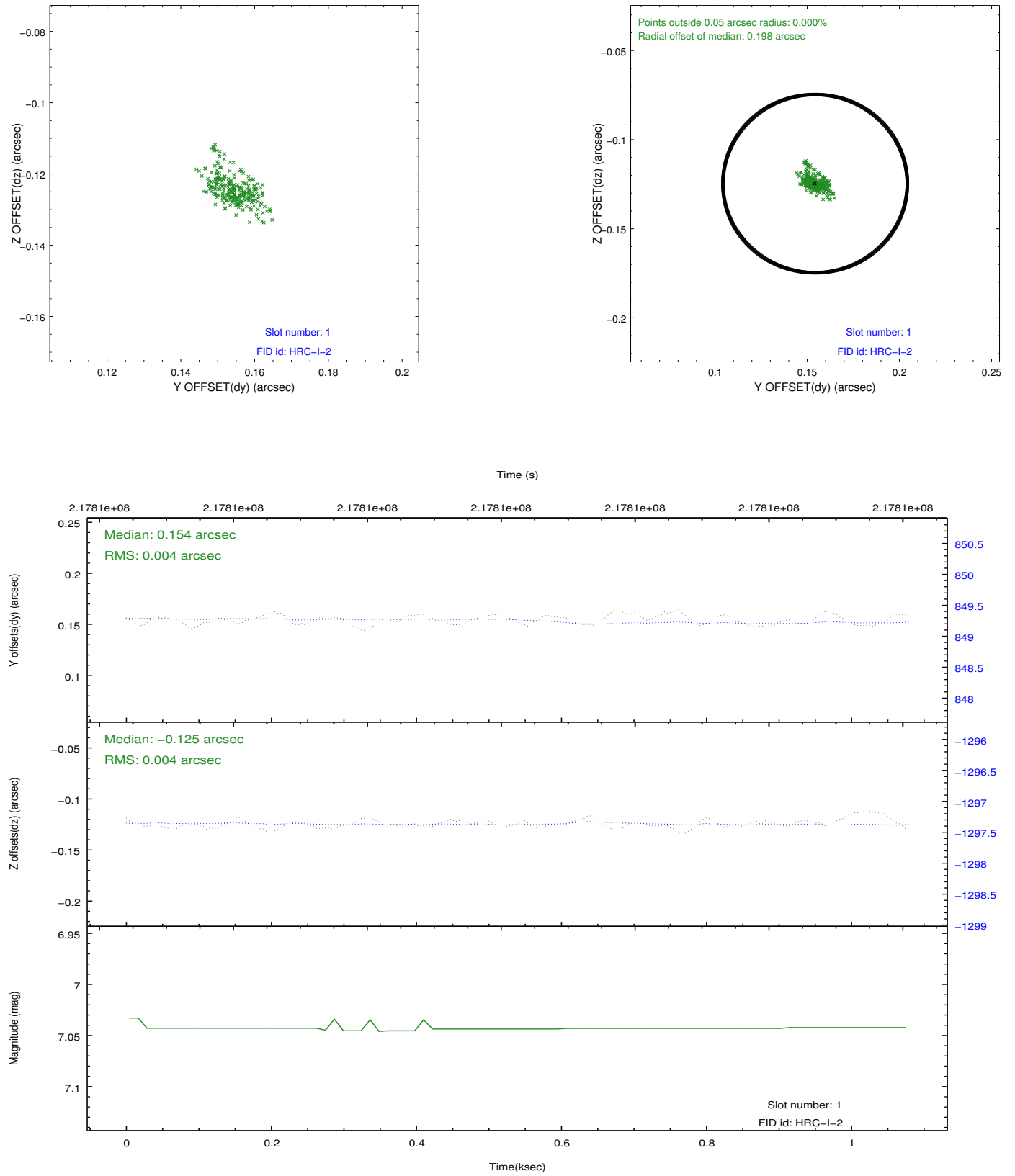


## 2.5 FID Slots

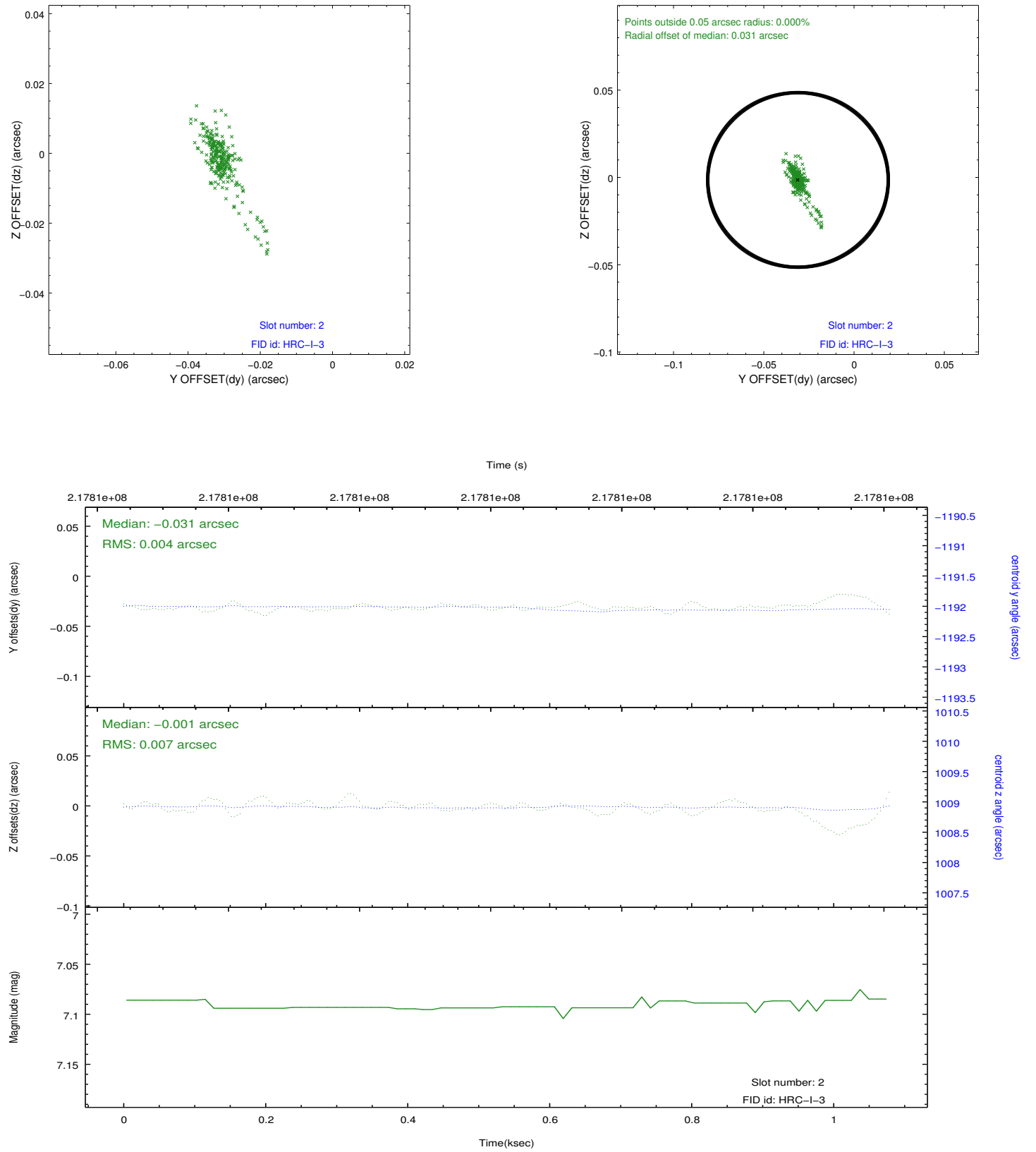
### 2.5.1 Slot 0



## 2.5.2 Slot 1



### 2.5.3 Slot 2





## A Summary

### A.1 Status

V&V Scientist	Jen Lauer
V&V Date (YYYY-MM-DD)	2013.01.02
V&V Edition	1
V&V Disposition and Status	OK
V&V Charge Time	1.07958129

### A.2 Comments