

V&V Reference Report

L2 ASCDS Version : 8.4.5

Observation 60354 - L2 Version 3
Chandra X-Ray Center

L2 Processing Date : Nov 12 2012

Contents

1	Front	2
2	OBI	3
2.1	OBI	3
2.1.1	Images	3
2.1.2	Bias	3
2.1.3	Parameters	4
2.1.4	Events	4
2.2	Compared Parameters	5
2.3	Star Slots	6
2.4	FID Slots	6
A	Summary	7
A.1	Status	7
A.2	Comments	7

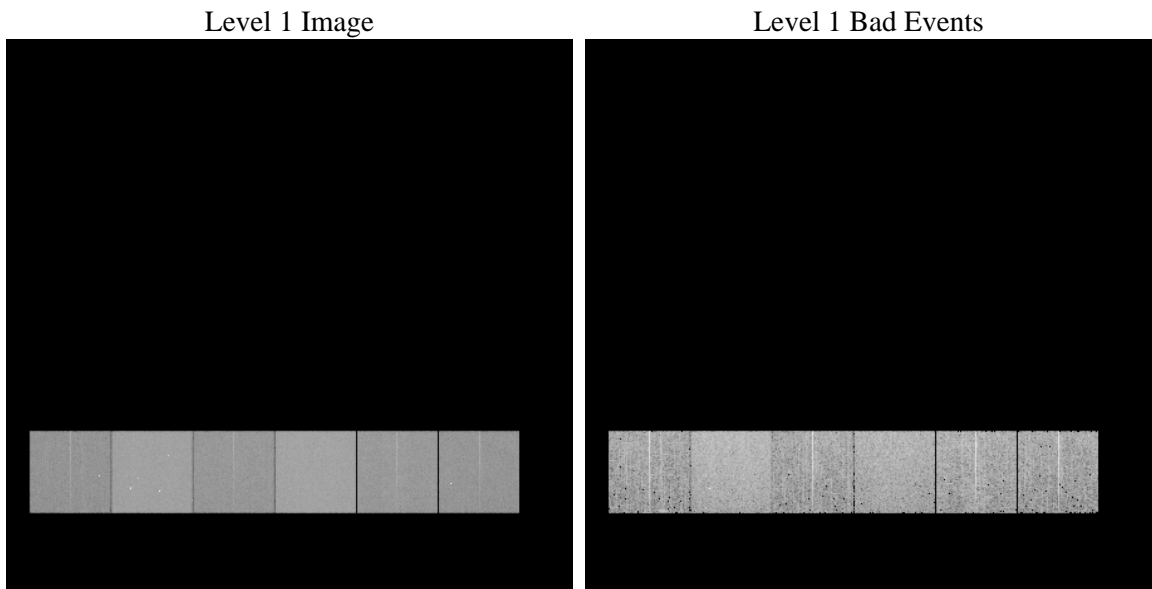
1 Front

seq_num	 	Sequence number
obs_id	60354	Observation id
title	ACIS-456789 diagnostics	Proposal title
observer	CHANDRA engineering request/realtime commanding	Principal investig
object	 	Source name
dtcycle	0	
cycle	P	events from which exps? Prim/Second/Both
ra_targ	0.0	Observer's specified target RA [deg]
dec_targ	0.0	Observer's specified target Dec [deg]
ra_nom	158.02720806155	Nominal RA [deg]
dec_nom	-5.9906535716405	Nominal Dec [deg]
roll_nom	346.15720088595	Nominal Roll [deg]
revision	3	Processing version of data
ontime	7798.2534146905	Sum of GTIs [s]
livetime	7699.5072344092	Livetime [s]
ontime4	4647.8918711841	Sum of GTIs [s]
ontime5	7798.2123746872	Sum of GTIs [s]
ontime6	5082.2265375853	Sum of GTIs [s]
ontime7	7798.2534146905	Sum of GTIs [s]
ontime8	5234.4701933265	Sum of GTIs [s]
ontime9	4891.130636245	Sum of GTIs [s]
l2events	1113909	Number of level 2 events

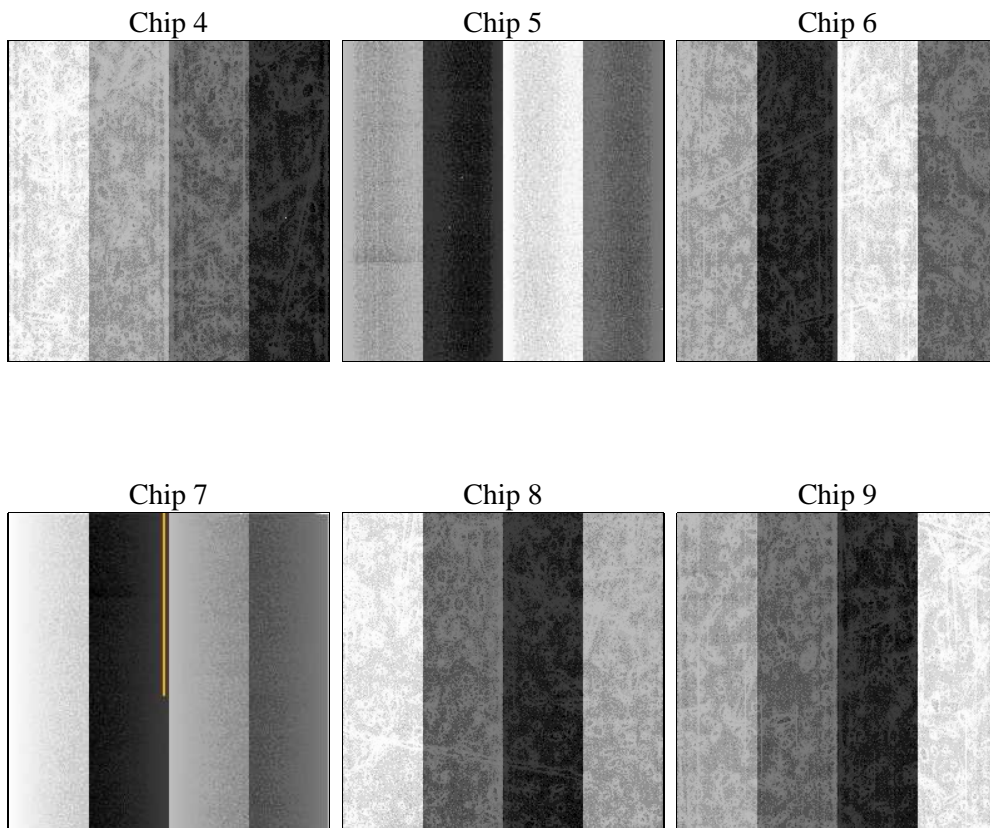
2 OBI

2.1 OBI

2.1.1 Images



2.1.2 Bias



2.1.3 Parameters

obi_num	0	Obi number	sched_exp_time	0.0	[s] Scheduled observation exposure time
ascdsver	8.4.5	Processing system revision	ontime	7798.2534146905	Sum of GTIs [s]
caldbver	4.5.2	 	ontime4	4647.8918711841	Sum of GTIs [s]
date	2012-11-12T17:21:18	Date and time of file creation	ontime5	7798.2123746872	Sum of GTIs [s]
revision	3	Processing version of data	ontime6	5082.2265375853	Sum of GTIs [s]
			ontime7	7798.2534146905	Sum of GTIs [s]
			ontime8	5234.4701933265	Sum of GTIs [s]
			ontime9	4891.130636245	Sum of GTIs [s]
			l1events	1416026	Number of level 1 events

2.1.4 Events

	ccd 4	ccd 5	ccd 6	ccd 7	ccd 8	ccd 9		ccd 4	ccd 5	ccd 6	ccd 7	ccd 8	ccd 9
level 1 events	181957	295048	208252	314053	222217	194499	grade 0 events	86615	57546	94414	67046	99874	89484
rejected events	34132	50701	35157	42573	40044	33968		47%	19%	45%	21%	44%	46%
rejected %	18%	17%	16%	13%	18%	17%	grade 1 events	598	369	481	207	517	447
								0%	0%	0%	0%	0%	0%
							grade 2 events	22996	87153	29840	60055	31714	27167
								12%	29%	14%	19%	14%	13%
							grade 3 events	9987	14909	10545	27394	12005	10051
								5%	5%	5%	8%	5%	5%
							grade 4 events	9656	14596	10988	26797	11675	10165
								5%	4%	5%	8%	5%	5%
							grade 5 events	2052	8309	2390	7801	2835	2392
								1%	2%	1%	2%	1%	1%
							grade 6 events	18673	70254	27427	90305	27004	23763
								10%	23%	13%	28%	12%	12%
							grade 7 events	31380	41912	32167	34448	36593	31030
								17%	14%	15%	10%	16%	15%

2.2 Compared Parameters

Parameter	Planned	Actual
Instrument	ACIS	ACIS
Detector	ACIS-456789	ACIS-456789
Grating	NONE	NONE
Data mode	FAINT	FAINT
Observation mode	SECONDARY	SECONDARY
[deg] Pointing RA	0	158.0272080615462
[deg] Pointing Dec	0	-5.990653571640539
[deg] Pointing Roll	0.0	346.157200885948
[mm] SIM focus pos	-0.684267	-0.6828225247311905
[mm] SIM defocus	0	0.8505141146731063
[mm] SIM translation stage pos	-190.132523	250.4635187648994
[mm] SIM translation stage offset	0	-0.007540371344731511
[s] Observation start time (MET)	194415895.80844	194415894.78373
Observation start date	2004-02-29T04:24:56	2004-02-29T04:24:54
[s] Observation end time (MET)	194431471.709122	194431470.68442
Observation end date	2004-02-29T08:44:32	2004-02-29T08:44:30
Read mode	TIMED	TIMED

Parameter	Planned	Actual
Obspar format version number	7	7
Obspar file type	PREDICTED	ACTUAL
Obspar update status	NONE	UPDATED
On-chip summing requested	N	N
Subarray requested	NONE	NONE
Alternating exposures requested	N	N
[s] Primary exposure time	0.000000	3.2

2.3 Star Slots

2.4 FID Slots

A Summary

A.1 Status

V&V Scientist	Beth Sundheim
V&V Date (YYYY-MM-DD)	2012.12.20
V&V Edition	1
V&V Disposition and Status	OK
V&V Charge Time	7.7982534146905

A.2 Comments