

V&V Reference Report

L2 ASCDS Version : 7.6.7.2

Observation 60144 - L2 Version 001
Chandra X-Ray Center

L2 Processing Date : Apr 29 2006

Contents

1	Front	2
2	OBI	3
2.1	OBI	3
2.1.1	Images	3
2.1.2	Bias	3
2.1.3	Parameters	4
2.1.4	Events	4
2.2	Compared Parameters	5
2.3	Aspect	6
2.4	Star Slots	8
2.5	FID Slots	8
A	Summary	9
A.1	Status	9
A.2	Comments	9

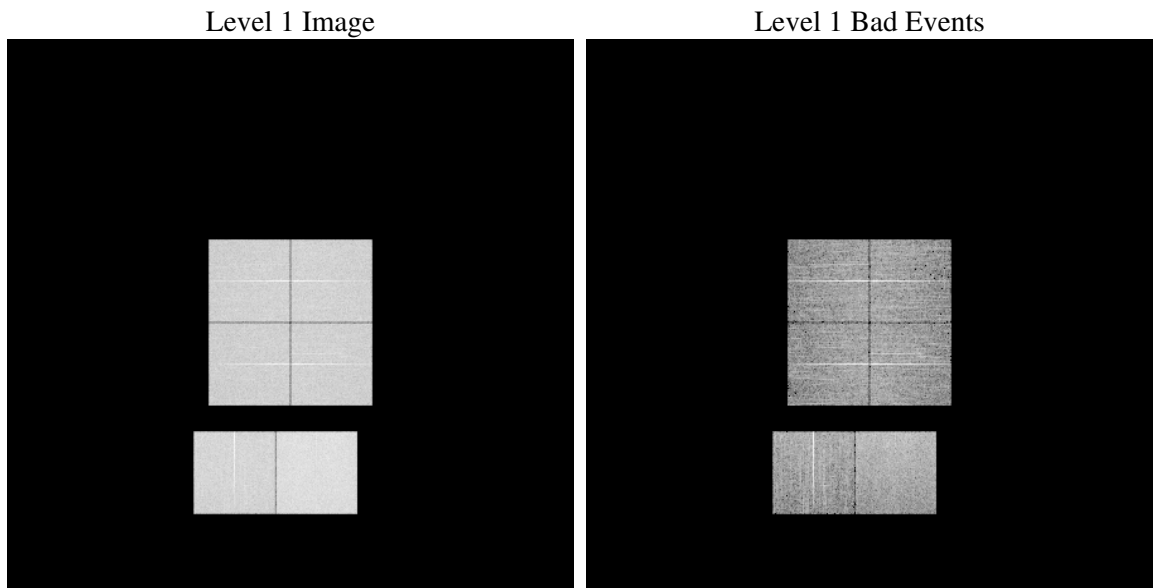
1 Front

seq_num	
obs_id	60144
title	ACIS-012367 diagnostics
observer	CHANDRA engineering request/realtime commanding
object	
dtcycle	0
cycle	P
ra_targ	0.0
dec_targ	0.0
ra_nom	273.99608185749
dec_nom	-14.026565774347
roll_nom	235.15708327179
revision	2
ontime	8278.1100601256
livetime	8173.2876460648
ontime0	6314.1230770946
ontime1	6440.5617490411
ontime2	6019.2764320672
ontime3	6122.8237603605
ontime6	6745.2953447402
ontime7	8278.1100601256
l2events	1134429

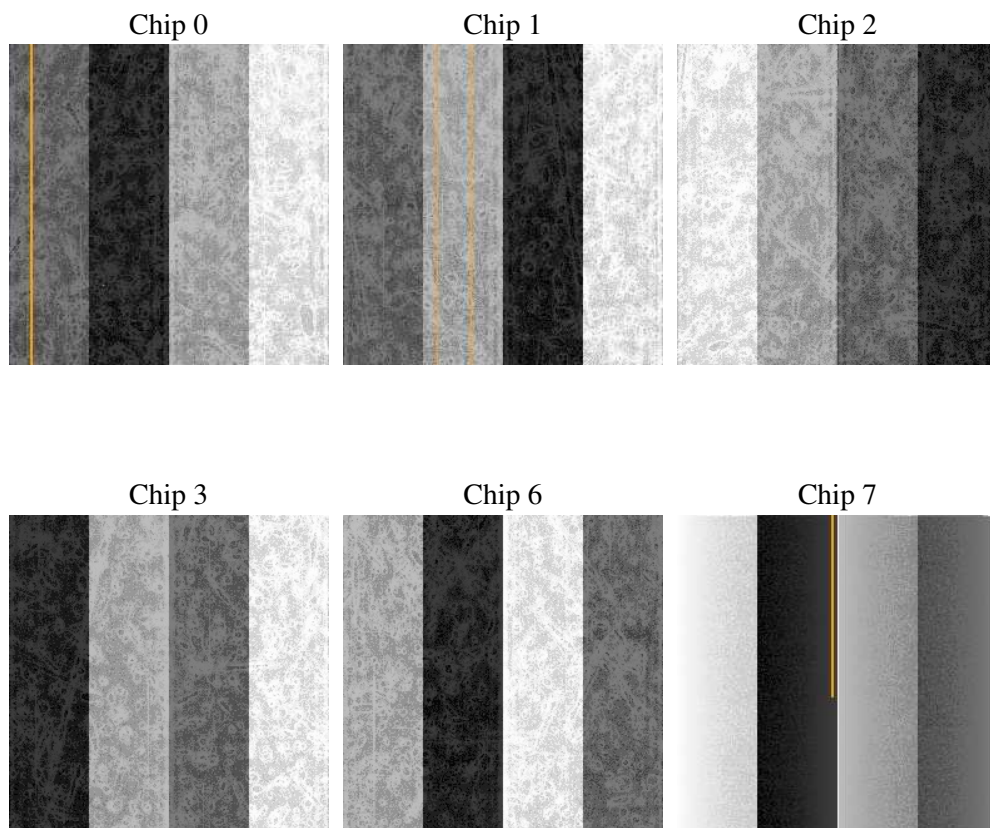
2 OBI

2.1 OBI

2.1.1 Images



2.1.2 Bias



2.1.3 Parameters

obi_num	1
ascdsver	7.6.7.2
caldbver	3.2.1
date	2006-04-29T22:20:43
revision	2

sched_exp_time	0.0
ontime	8280.7646970749
ontime0	6316.7366740406
ontime1	6443.1343059838
ontime2	6021.8079490066
ontime3	6125.5194373131
ontime6	6747.7858217061
ontime7	8280.7646970749
l1events	1499206

2.1.4 Events

	ccd 0	ccd 1	ccd 2	ccd 3	ccd 6	ccd 7
level 1 events	230542	236558	223280	230390	258549	319887
rejected events	46554	47980	45950	49091	53173	65363
rejected %	20%	20%	20%	21%	20%	20%

	ccd 0	ccd 1	ccd 2	ccd 3	ccd 6	ccd 7
grade 0 events	102035	102490	99885	102096	110923	40707
	44%	43%	44%	44%	42%	12%
grade 1 events	611	486	593	623	536	130
	0%	0%	0%	0%	0%	0%
grade 2 events	31874	34172	29267	30340	36290	79574
	13%	14%	13%	13%	14%	24%
grade 3 events	11810	11967	11443	11794	12371	17208
	5%	5%	5%	5%	4%	5%
grade 4 events	11714	11762	11689	11966	12550	16881
	5%	4%	5%	5%	4%	5%
grade 5 events	2858	3030	2580	3000	3319	7463
	1%	1%	1%	1%	1%	2%
grade 6 events	26653	28283	25143	25199	33340	100248
	11%	11%	11%	10%	12%	31%
grade 7 events	42987	44368	42680	45372	49220	57676
	18%	18%	19%	19%	19%	18%

2.2 Compared Parameters

Parameter	Planned	Actual	Parameter	Planned	Actual
Instrument	ACIS	ACIS	Obspar format version number	6	6
Detector	ACIS-012367	ACIS-012367	Obspar file type	PREDICTED	ACTUAL
Grating	NONE	NONE	Obspar update status	NONE	UPDATED
Data mode	FAINT	FAINT	On-chip summing requested	N	N
Observation mode	SECONDARY	SECONDARY	Subarray requested	NONE	NONE
Pointing RA	0	273.9960818574877	Alternating exposures requested	N	N
Pointing Dec	0	-14.02656577434681	Primary exposure time	3.2	3.2
Pointing Roll	0.0	235.1570832717933			
SIM focus pos (mm)	-0.782348	-0.6828225247311905			
SIM defocus (mm)	0	0.8505141146731063			
SIM translation stage pos (mm)	-233.592463	250.466033080201			
SIM translation stage offset (mm)	0	-0.01005468664627074			
Observation start time	205652200.504163	205652199.47915			
Observation start date	2004-07-08T05:36:41	2004-07-08T05:36:39			
Observation end time	205671117.905003	205671116.87999			
Observation end date	2004-07-08T10:51:58	2004-07-08T10:51:56			
Read mode	TIMED	TIMED			

2.3 Aspect

2.4 Star Slots

2.5 FID Slots

A Summary

A.1 Status

V&V Scientist	Jen Lauer
V&V Date (YYYY-MM-DD)	2006.04.30
V&V Edition	1
V&V Disposition and Status	OK
V&V Charge Time	8.27811006

A.2 Comments

The ACIS focal plane temperature was above calibration limits for the entire observation.