

V&V Reference Report

L2 ASCDS Version : 7.6.7.2

Observation 60124 - L2 Version _e1
Chandra X-Ray Center

L2 Processing Date : Apr 28 2006

Contents

1	Front	2
2	OBI Primary	3
2.1	OBI	3
2.1.1	Images	3
2.1.2	Bias	3
2.1.3	Parameters	4
2.1.4	Events	4
2.2	Compared Parameters	5
2.3	Aspect	6
2.4	Star Slots	8
2.5	FID Slots	8
3	OBI Secondary	8
3.1	OBI	8
3.1.1	Images	8
3.1.2	Bias	8
3.1.3	Parameters	9
3.1.4	Events	9
A	Summary	10
A.1	Status	10
A.2	Comments	10

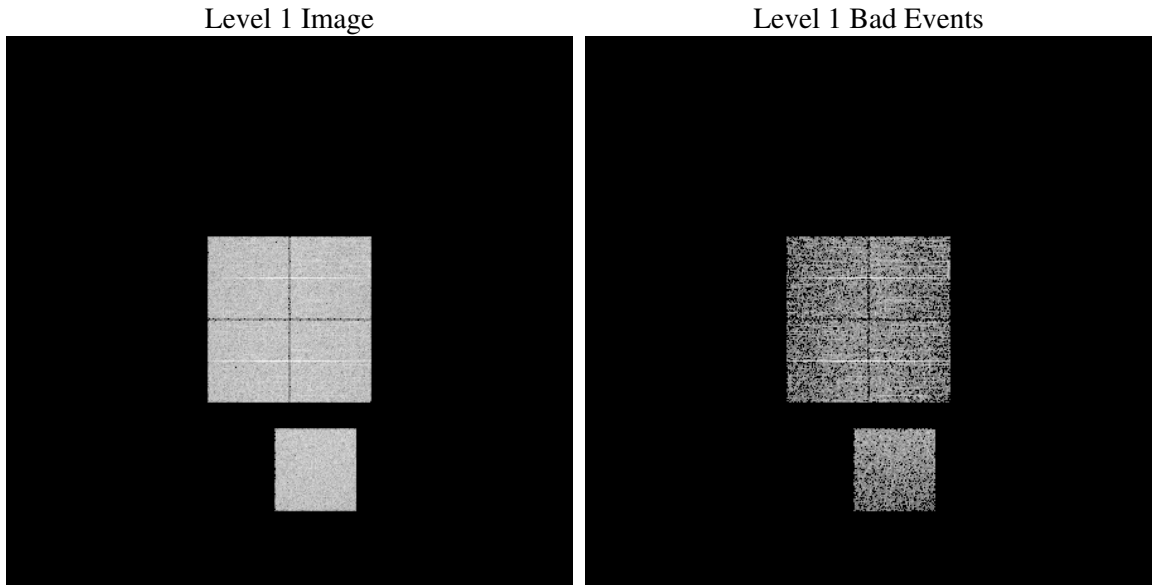
1 Front

seq_num	
obs_id	60124
title	ACIS-01237 diagnostics
observer	CHANDRA engineering request/realtime commanding
object	
dtcycle	0
cycle	P
ra_targ	0.0
dec_targ	0.0
ra_nom	221.005707364
dec_nom	25.97207594568
roll_nom	247.19877590628
revision	2
ontime	3690.1526042819
livetime	1185.2129454638
ontime0	3690.1526042819
ontime1	3690.1526241899
ontime2	3690.1526042819
ontime3	3690.1526241899
ontime7	3690.1526042819
l2events	177811

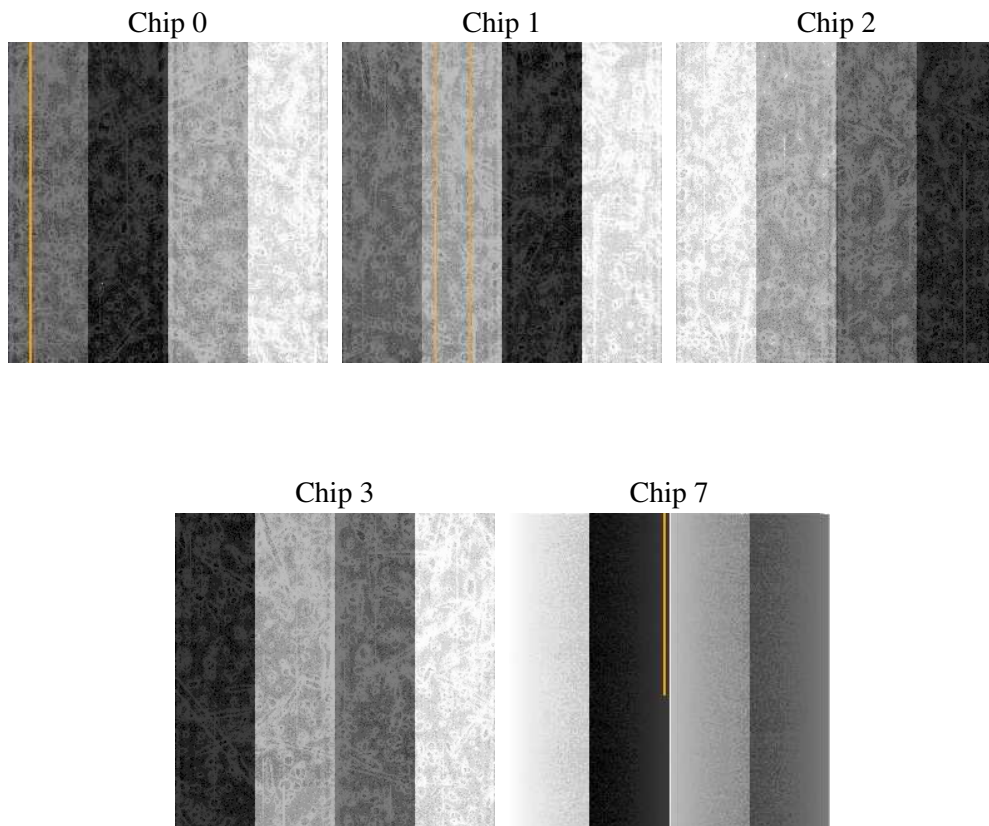
2 OBI Primary

2.1 OBI

2.1.1 Images



2.1.2 Bias



2.1.3 Parameters

obi_num	0
ascdsver	7.6.7.2
caldbver	3.2.1
date	2006-04-28T09:37:36
revision	2

sched_exp_time	0.0
ontime	3694.1598517001
ontime0	3694.1598517001
ontime1	3694.1598517001
ontime2	3694.1598517001
ontime3	3694.1598517001
ontime7	3694.1598517001
llevents	248451

2.1.4 Events

	ccd 0	ccd 1	ccd 2	ccd 3	ccd 7
level 1 events	48045	49794	49836	50642	50134
rejected events	11131	12886	12369	13243	11519
rejected %	23%	25%	24%	26%	22%

	ccd 0	ccd 1	ccd 2	ccd 3	ccd 7
grade 0 events	20222	20183	20957	20948	7022
	42%	40%	42%	41%	14%
grade 1 events	77	80	100	90	22
	0%	0%	0%	0%	0%
grade 2 events	6504	6519	6287	6409	11652
	13%	13%	12%	12%	23%
grade 3 events	2393	2462	2475	2468	2871
	4%	4%	4%	4%	5%
grade 4 events	2476	2379	2506	2495	2773
	5%	4%	5%	4%	5%
grade 5 events	631	653	631	694	1311
	1%	1%	1%	1%	2%
grade 6 events	5319	5365	5242	5079	14297
	11%	10%	10%	10%	28%
grade 7 events	10423	12153	11638	12459	10186
	21%	24%	23%	24%	20%

2.2 Compared Parameters

Parameter	Planned	Actual	Parameter	Planned	Actual
Instrument	ACIS	ACIS	Obspar format version number	6	6
Detector	ACIS-01237	ACIS-01237	Obspar file type	PREDICTED	ACTUAL
Grating	NONE	NONE	Obspar update status	NONE	UPDATED
Data mode	FAINT	FAINT	On-chip summing requested	N	N
Observation mode	SECONDARY	SECONDARY	Subarray requested	NONE	NONE
Pointing RA	0	221.0057073640005	Alternating exposures requested	Y	Y
Pointing Dec	0	25.97207594568012	Primary exposure time	1.5	1.5
Pointing Roll	0.0	247.1987759062783	Secondary exposure time	3.2	3.2
SIM focus pos (mm)	-0.782348	-0.6828225247311905	Duty cycle	1	1
SIM defocus (mm)	0	0.8505141146731063			
SIM translation stage pos (mm)	-233.592463	250.466033080201			
SIM translation stage offset (mm)	0	-0.01005468664627074			
Observation start time	206749565.552889	206749564.52787			
Observation start date	2004-07-20T22:26:06	2004-07-20T22:26:04			
Observation end time	206767611.703692	206767610.67867			
Observation end date	2004-07-21T03:26:52	2004-07-21T03:26:50			
Read mode	TIMED	TIMED			

2.3 Aspect

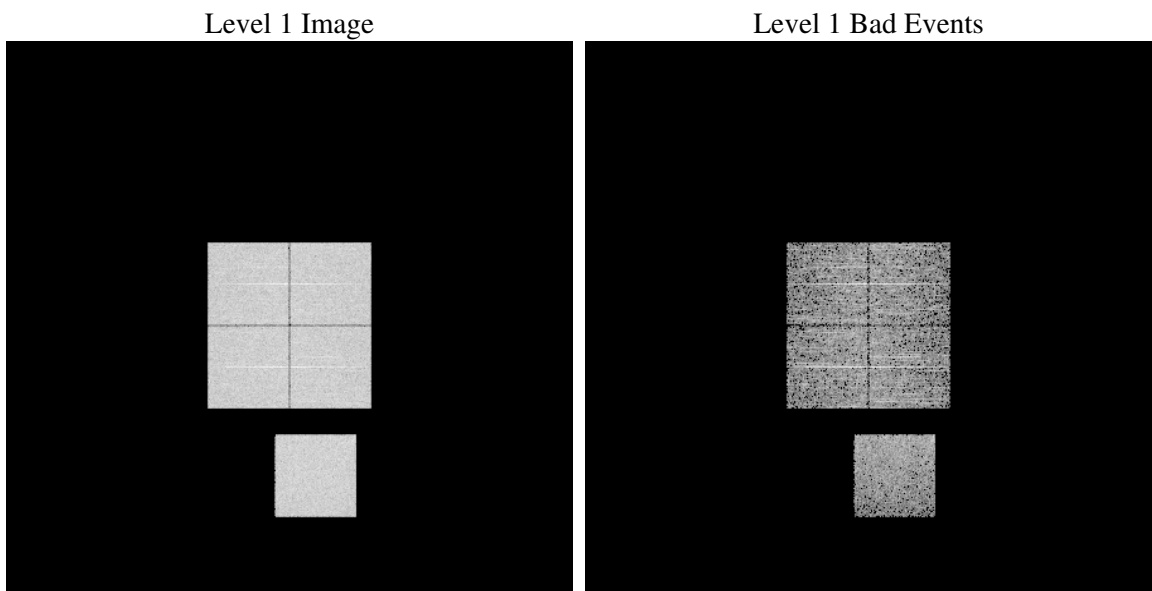
2.4 Star Slots

2.5 FID Slots

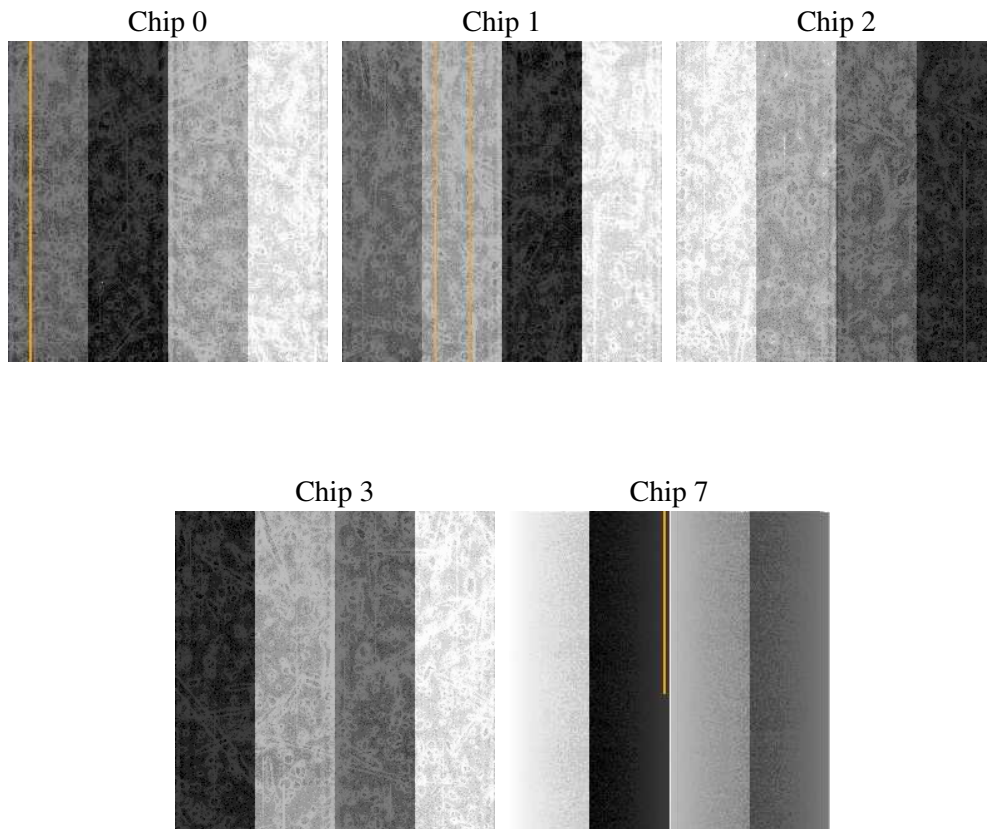
3 OBI Secondary

3.1 OBI

3.1.1 Images



3.1.2 Bias



3.1.3 Parameters

obi_num	0
ascdsver	7.6.7.2
caldsver	3.2.1
date	2006-04-28T09:41:06
revision	2

sched_exp_time	0.0
ontime	2566.903673172
ontime0	2566.903673172
ontime1	2566.903673172
ontime2	2563.6626331806
ontime3	2566.903673172
ontime7	2566.903673172
l1events	475851

3.1.4 Events

	ccd 0	ccd 1	ccd 2	ccd 3	ccd 7
level 1 events	93593	93338	95115	95183	98622
rejected events	17327	17362	18522	18703	18037
rejected %	18%	18%	19%	19%	18%

	ccd 0	ccd 1	ccd 2	ccd 3	ccd 7
grade 0 events	41680	41588	42775	42595	14049
	44%	44%	44%	44%	14%
grade 1 events	254	190	297	275	41
	0%	0%	0%	0%	0%
grade 2 events	13400	13274	12900	13026	24310
	14%	14%	13%	13%	24%
grade 3 events	4968	4900	5024	5068	5821
	5%	5%	5%	5%	5%
grade 4 events	5047	4910	5061	5116	5784
	5%	5%	5%	5%	5%
grade 5 events	1110	1140	1159	1185	2169
	1%	1%	1%	1%	2%
grade 6 events	11263	11410	10940	10768	30738
	12%	12%	11%	11%	31%
grade 7 events	15871	15926	16959	17150	15710
	16%	17%	17%	18%	15%

A Summary

A.1 Status

V&V Scientist	Jen Lauer
V&V Date (YYYY-MM-DD)	2006.04.28
V&V Edition	1
V&V Disposition and Status	OK
V&V Charge Time	6.25406704

A.2 Comments