

# V&V Reference Report

## L2 ASCDS Version : 8.4.3

Observation 59224 - L2 Version 2  
Chandra X-Ray Center

L2 Processing Date : Mar 21 2012

## Contents

<b>1</b>	<b>Front</b>	<b>2</b>
<b>2</b>	<b>OBI</b>	<b>3</b>
2.1	OBI . . . . .	3
2.1.1	Images . . . . .	3
2.1.2	Bias . . . . .	3
2.1.3	Parameters . . . . .	4
2.1.4	Events . . . . .	4
2.2	Compared Parameters . . . . .	5
2.3	Star Slots . . . . .	6
2.4	FID Slots . . . . .	6
<b>A</b>	<b>Summary</b>	<b>7</b>
A.1	Status . . . . .	7
A.2	Comments . . . . .	7

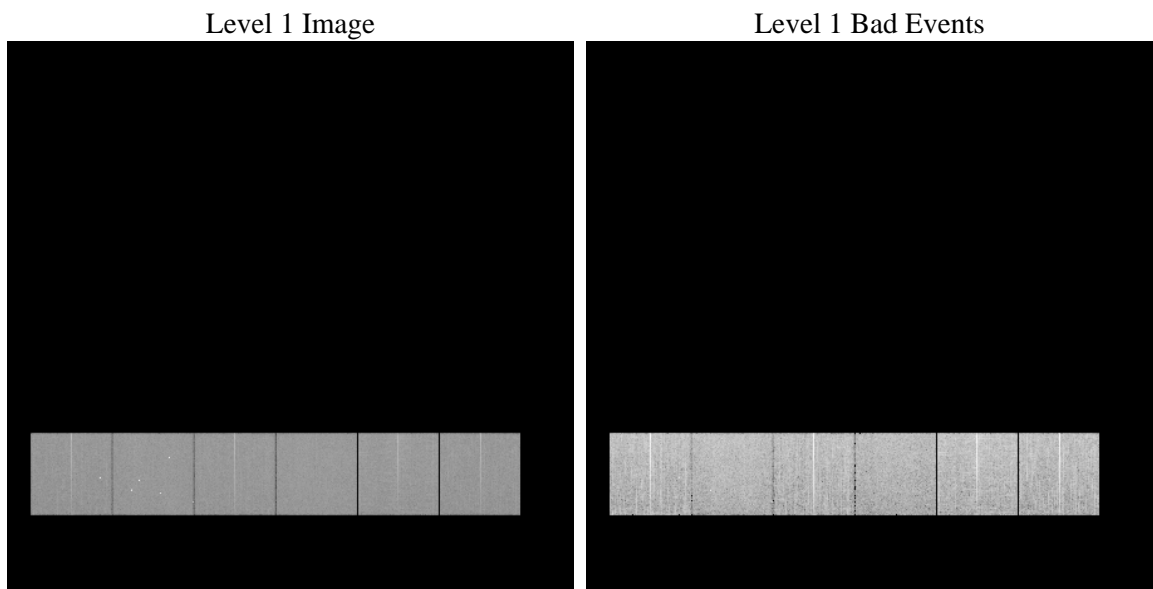
# 1 Front

seq_num	&#160	Sequence number
obs_id	59224	Observation id
title	ACIS-456789 diagnostics	Proposal title
observer	CHANDRA engineering request/realtime commanding	Principal investig
object	&#160	Source name
dtcycle	0	&#160
cycle	P	events from which exps? Prim/Second/Both
ra_targ	0.0	Observer's specified target RA [deg]
dec_targ	0.0	Observer's specified target Dec [deg]
ra_nom	81.527466088232	Nominal RA [deg]
dec_nom	-3.9917486353294	Nominal Dec [deg]
roll_nom	343.88905939415	Nominal Roll [deg]
revision	2	Processing version of data
ontime	8278.3999691606	Sum of GTIs [s]
livetime	8173.573884097	Livetime [s]
ontime4	8155.1716825962	Sum of GTIs [s]
ontime5	8278.3999691606	Sum of GTIs [s]
ontime6	8278.3700939119	Sum of GTIs [s]
ontime7	8278.3999691606	Sum of GTIs [s]
ontime8	8278.2880139351	Sum of GTIs [s]
ontime9	8249.2310966849	Sum of GTIs [s]
l2events	1016181	Number of level 2 events

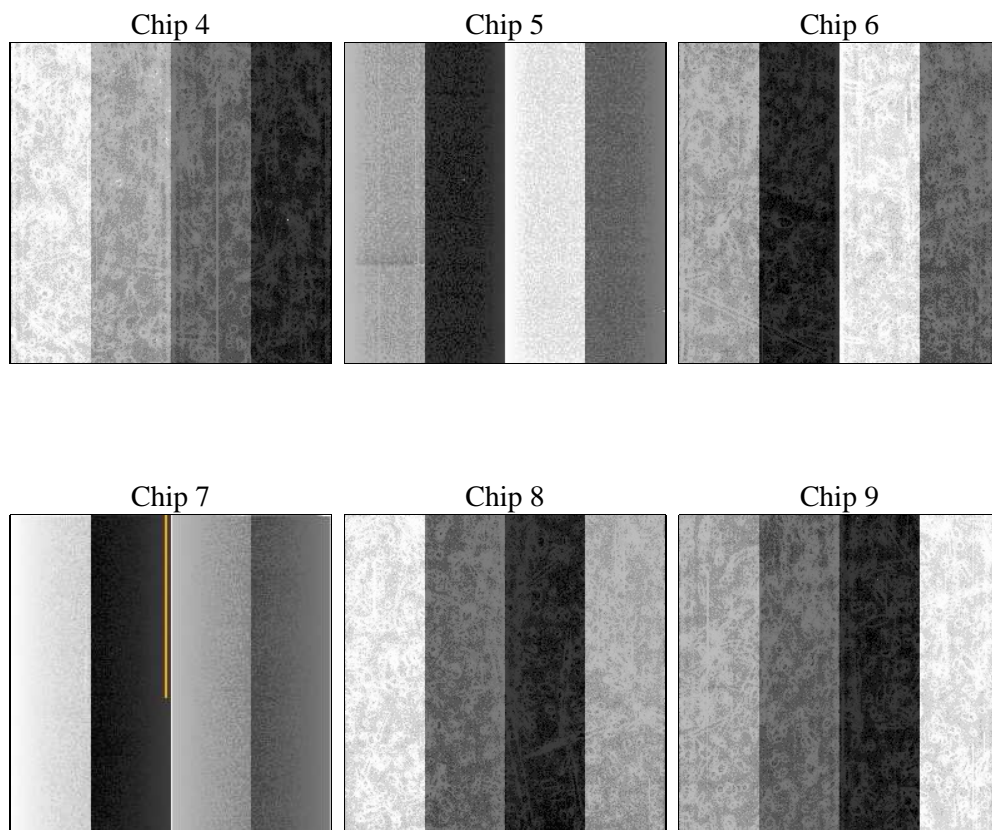
## 2 OBI

### 2.1 OBI

#### 2.1.1 Images



#### 2.1.2 Bias



### 2.1.3 Parameters

obi_num	0	Obi number	sched_exp_time	0.0	[s] Scheduled observation exposure time
ascdsver	8.4.3	Processing system revision	ontime	8278.3999691606	Sum of GTIs [s]
caldsver	4.4.8	&#160	ontime4	8155.1716825962	Sum of GTIs [s]
date	2012-03-21T03:41:55	Date and time of file creation	ontime5	8278.3999691606	Sum of GTIs [s]
revision	2	Processing version of data	ontime6	8278.3700939119	Sum of GTIs [s]
			ontime7	8278.3999691606	Sum of GTIs [s]
			ontime8	8278.2880139351	Sum of GTIs [s]
			ontime9	8249.2310966849	Sum of GTIs [s]
			l1events	1479750	Number of level 1 events

### 2.1.4 Events

	ccd 4	ccd 5	ccd 6	ccd 7	ccd 8	ccd 9		ccd 4	ccd 5	ccd 6	ccd 7	ccd 8	ccd 9
level 1 events	234882	248160	245171	251875	260315	239347	grade 0 events	97015	41061	96967	45453	100955	94253
rejected events	68687	60988	65431	53948	72036	67399		41%	16%	39%	18%	38%	39%
rejected %	29%	24%	26%	21%	27%	28%	grade 1 events	793	224	520	160	588	607
								0%	0%	0%	0%	0%	0%
							grade 2 events	26099	66310	31457	43080	33256	29763
								11%	26%	12%	17%	12%	12%
							grade 3 events	11234	10290	11370	19506	12661	11026
								4%	4%	4%	7%	4%	4%
							grade 4 events	10871	10320	11194	19316	12611	11088
								4%	4%	4%	7%	4%	4%
							grade 5 events	3728	9213	3922	9235	4830	4387
								1%	3%	1%	3%	1%	1%
							grade 6 events	21034	59275	28806	70649	28874	25887
								8%	23%	11%	28%	11%	10%
							grade 7 events	64108	51467	60935	44476	66540	62336
								27%	20%	24%	17%	25%	26%

## 2.2 Compared Parameters

Parameter	Planned	Actual
Instrument	ACIS	ACIS
Detector	ACIS-456789	ACIS-456789
Grating	NONE	NONE
Data mode	FAINT	FAINT
Observation mode	SECONDARY	SECONDARY
[deg] Pointing RA	0	81.52746608823239
[deg] Pointing Dec	0	-3.991748635329425
[deg] Pointing Roll	0.0	343.8890593941451
[mm] SIM focus pos	-0.684267	-1.526339935833849
[mm] SIM defocus	0	0.006996703570447904
[mm] SIM translation stage pos	-190.132523	250.466033080201
[mm] SIM translation stage offset	0	-0.01005468664627074
[s] Observation start time (MET)	251569865.587196	251569864.5622
Observation start date	2005-12-21T16:31:06	2005-12-21T16:31:04
[s] Observation end time (MET)	251593895.688308	251593894.66331
Observation end date	2005-12-21T23:11:36	2005-12-21T23:11:34
Read mode	TIMED	TIMED

Parameter	Planned	Actual
Obspar format version number	7	7
Obspar file type	PREDICTED	ACTUAL
Obspar update status	NONE	UPDATED
On-chip summing requested	N	N
Subarray requested	NONE	NONE
Alternating exposures requested	N	N
[s] Primary exposure time	3.2	3.2

## **2.3 Star Slots**

## **2.4 FID Slots**

## A Summary

### A.1 Status

V&V Scientist	Jen Lauer
V&V Date (YYYY-MM-DD)	2012.03.21
V&V Edition	1
V&V Disposition and Status	OK
V&V Charge Time	8.2783999691606

### A.2 Comments