

V&V Reference Report

L2 ASCDS Version : 8.4.3.1

Observation 5884 - L2 Version 2
Chandra X-Ray Center

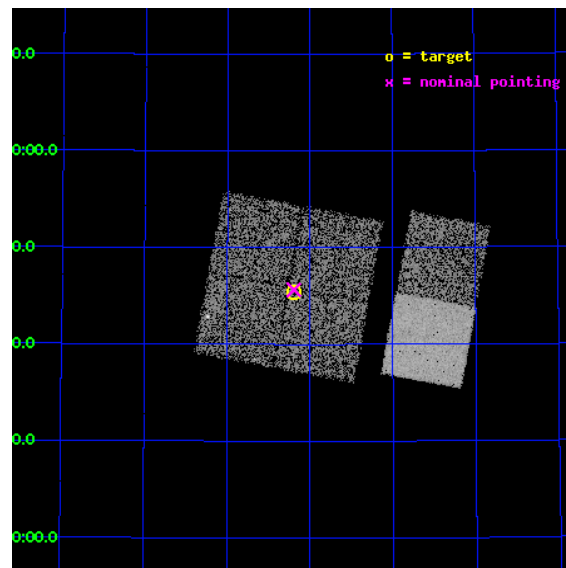
L2 Processing Date : Mar 27 2012

Contents

1	Front	2
2	OBI	3
2.1	OBI	3
2.1.1	Images	3
2.1.2	Bias	3
2.1.3	Parameters	4
2.1.4	Events	4
2.2	Compared Parameters	5
2.3	Aspect	6
2.4	Star Slots	9
2.4.1	Slot 3	9
2.4.2	Slot 4	10
2.4.3	Slot 5	11
2.4.4	Slot 6	12
2.4.5	Slot 7	13
2.5	FID Slots	14
2.5.1	Slot 0	14
2.5.2	Slot 1	15
2.5.3	Slot 2	16
A	Summary	17
A.1	Status	17
A.2	Comments	17

1 Front

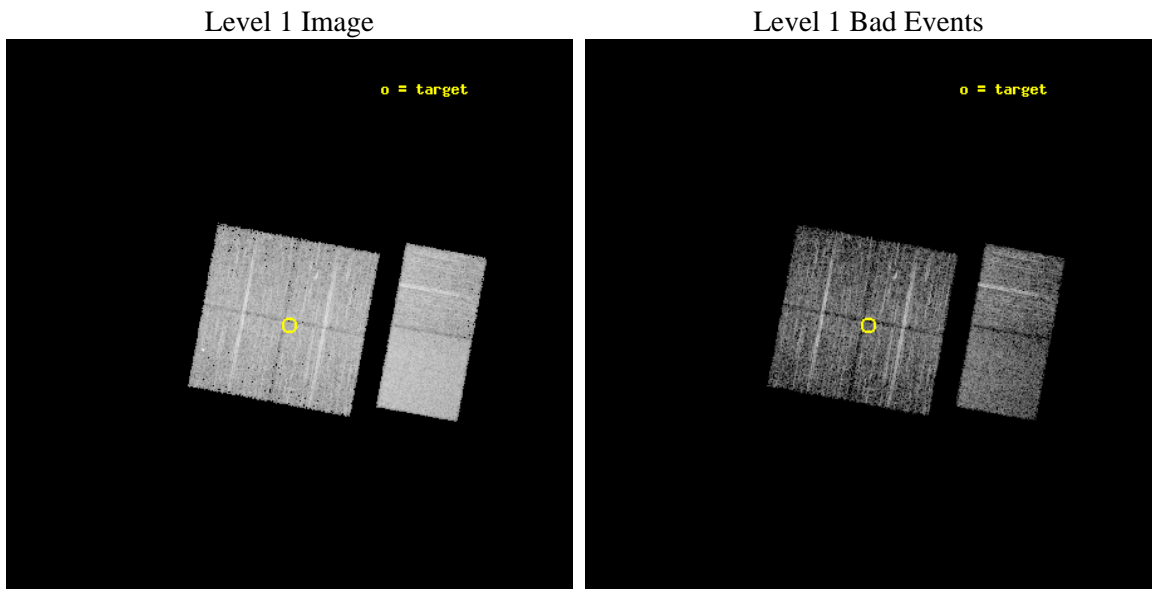
seq_num	900384	Sequence number
obs_id	5884	Observation id
title	The Spectral Energy Distributions of AGN: A Shallow Survey of the ELAIS-N1 Field	Proposal title
observer	Prof Kirpal Nandra	Principal investigator
object	N1_30	Source name
dtcycle	0	
cycle	P	events from which exps? Prim/Second/Both
ra_targ	243.297083	Observer's specified target RA [deg]
dec_targ	54.756194	Observer's specified target Dec [deg]
ra_nom	243.29877165933	Nominal RA [deg]
dec_nom	54.760713216945	Nominal Dec [deg]
roll_nom	100.49611169853	Nominal Roll [deg]
revision	2	Processing version of data
ontime	4659.1999826431	Sum of GTIs [s]
livetime	4600.2023870295	Livetime [s]
ontime0	4655.9590123594	Sum of GTIs [s]
ontime1	4659.1999826431	Sum of GTIs [s]
ontime2	4655.9590123296	Sum of GTIs [s]
ontime3	4659.1999826431	Sum of GTIs [s]
ontime6	4659.1999826431	Sum of GTIs [s]
ontime7	4659.1999826431	Sum of GTIs [s]
l2events	43850	Number of level 2 events



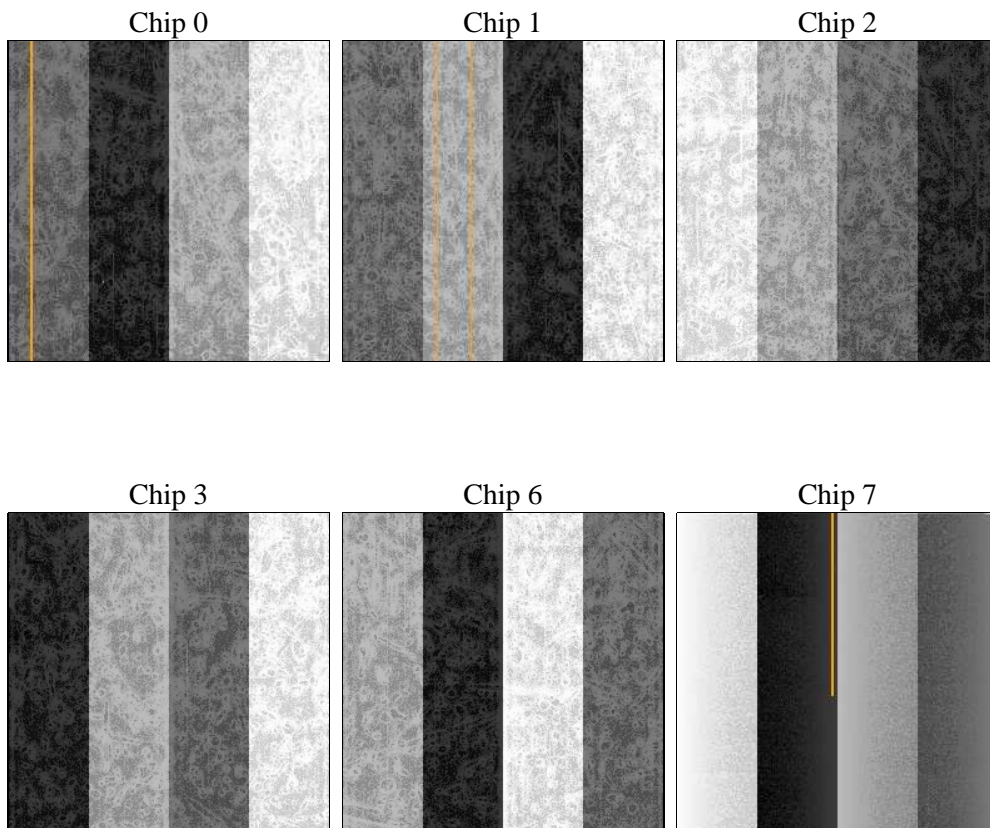
2 OBI

2.1 OBI

2.1.1 Images



2.1.2 Bias



2.1.3 Parameters

obi_num	0	Obi number	sched_exp_time	4900.000000	[s] Scheduled observation exposure time
ascdsver	8.4.3	Processing system revision	ontime	4659.1999826431	Sum of GTIs [s]
caldsver	4.4.8	 	ontime0	4655.9590123594	Sum of GTIs [s]
date	2012-03-27T05:20:37	Date and time of file creation	ontime1	4659.1999826431	Sum of GTIs [s]
revision	2	Processing version of data	ontime2	4655.9590123296	Sum of GTIs [s]
			ontime3	4659.1999826431	Sum of GTIs [s]
			ontime6	4659.1999826431	Sum of GTIs [s]
			ontime7	4659.1999826431	Sum of GTIs [s]
			l1events	256035	Number of level 1 events

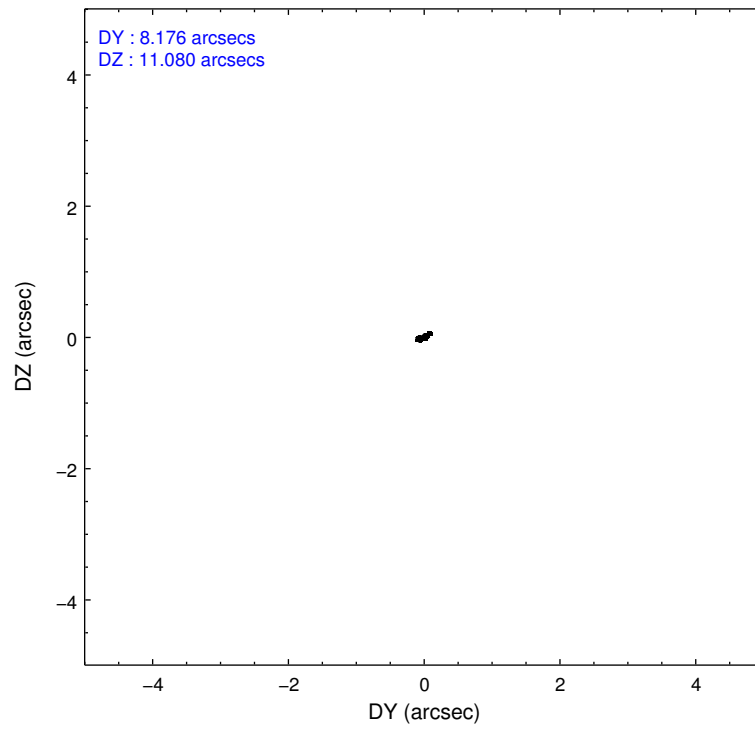
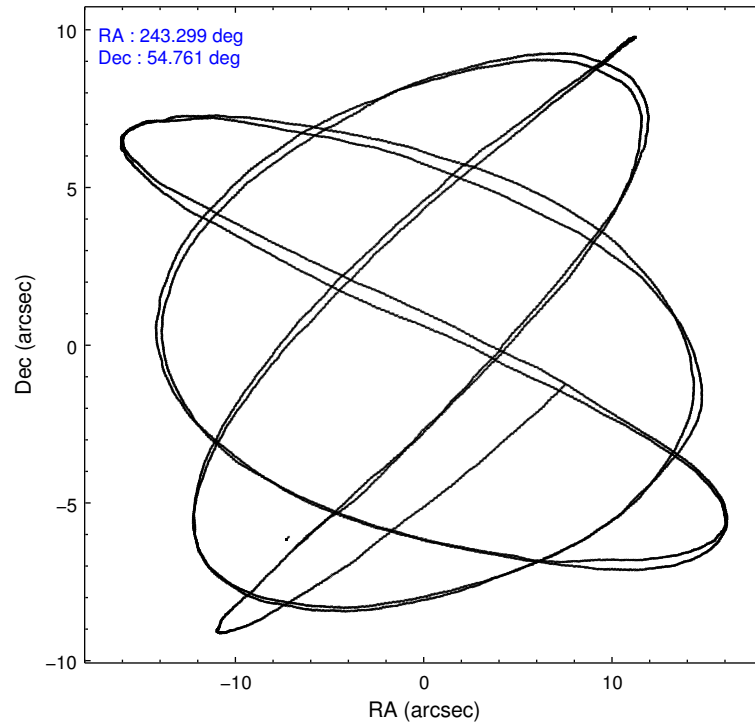
2.1.4 Events

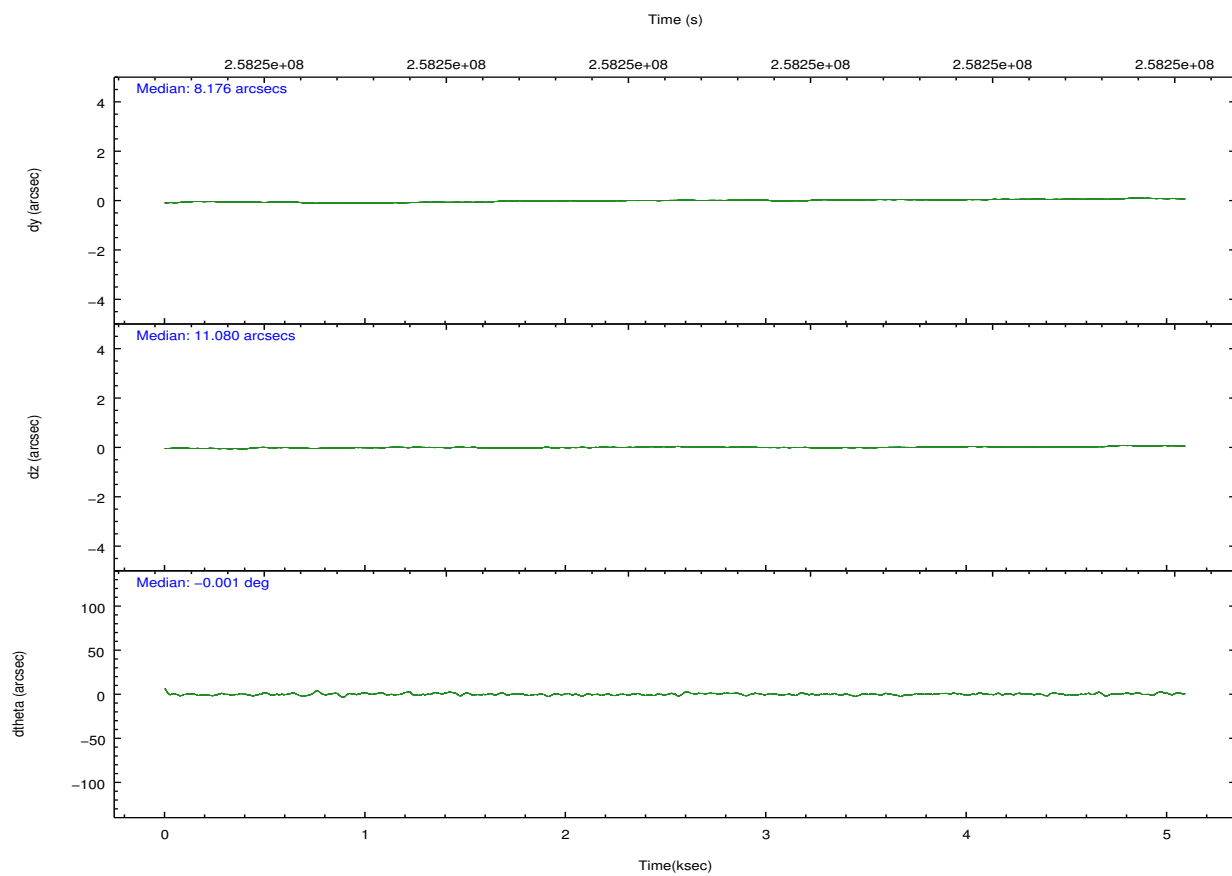
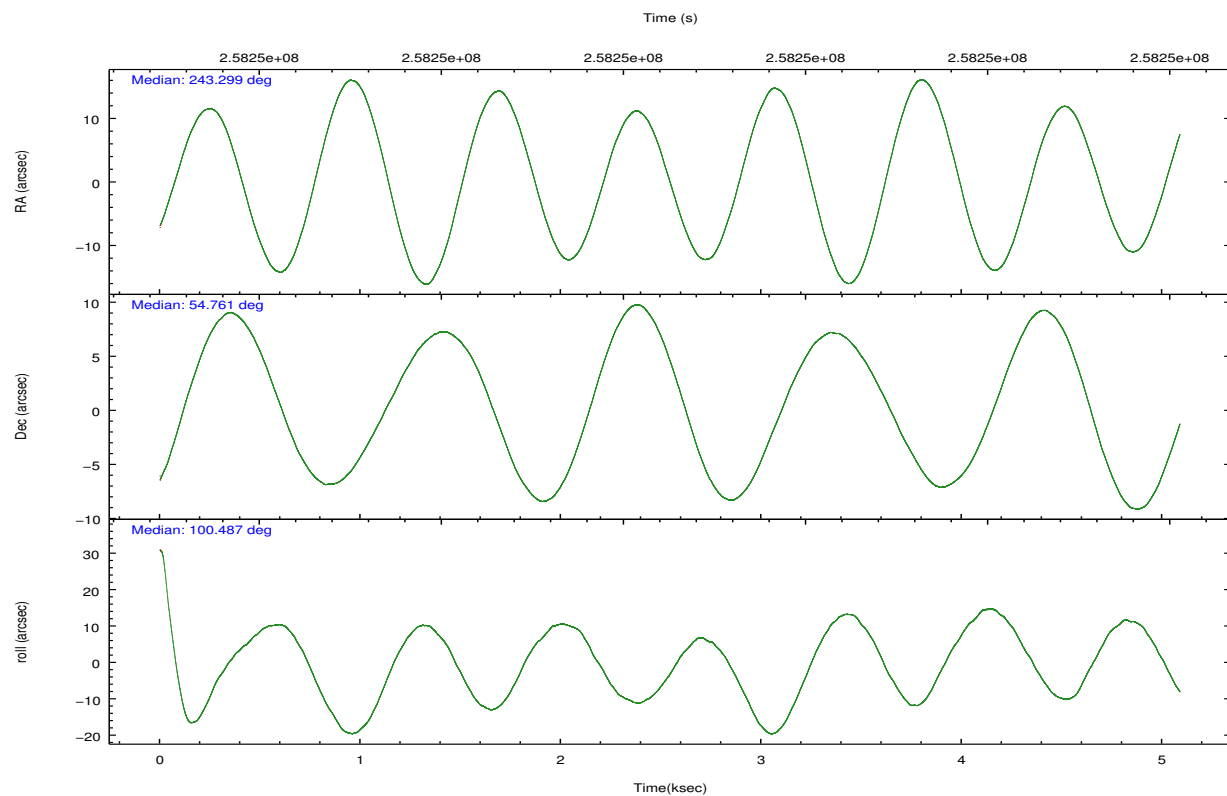
	ccd 0	ccd 1	ccd 2	ccd 3	ccd 6	ccd 7		ccd 0	ccd 1	ccd 2	ccd 3	ccd 6	ccd 7
level 1 events	37039	38979	41839	39471	43474	55233	grade 0 events	2116	2373	2184	2050	1834	1937
rejected events	32133	33435	36927	34720	38552	32418		5%	6%	5%	5%	4%	3%
rejected %	86%	85%	88%	87%	88%	58%	grade 1 events	31	30	27	23	20	59
								0%	0%	0%	0%	0%	0%
							grade 2 events	1037	1188	1042	969	1081	4498
								2%	3%	2%	2%	2%	8%
							grade 3 events	481	506	420	441	522	2106
								1%	1%	1%	1%	1%	3%
							grade 4 events	406	505	483	459	480	2022
								1%	1%	1%	1%	1%	3%
							grade 5 events	1629	1742	1542	1853	1978	5300
								4%	4%	3%	4%	4%	9%
							grade 6 events	873	976	786	837	1009	12268
								2%	2%	1%	2%	2%	22%
							grade 7 events	30466	31659	35355	32839	36550	27043
								82%	81%	84%	83%	84%	48%

2.2 Compared Parameters

Parameter	Planned	Actual	Parameter	Planned	Actual
Instrument	ACIS	ACIS	Obspar format version number	7	7
Detector	ACIS-012367	ACIS-012367	Obspar file type	PREDICTED	ACTUAL
Grating	NONE	NONE	Obspar update status	NONE	UPDATED
Data mode	VFAINT	VFAINT	Number of optional ACIS chips dropped	0	0
Observation mode	POINTING	POINTING	On-chip summing requested	N	N
[deg] Pointing RA	243.329765	243.2987716593264	Subarray requested	NONE	NONE
[deg] Pointing Dec	54.739971	54.76071321694455	Alternating exposures requested	N	N
[deg] Pointing Roll	100.262006	100.4961116985315	[s] Primary exposure time	0.000000	3.2
[mm] SIM focus pos	-0.782348	-0.7809083437167272			
[mm] SIM defocus	0	0.001439871863259334			
[mm] SIM translation stage pos	-233.592463	-233.5874344608287			
[mm] SIM translation stage offset	0	-0.005018542100998502			
[s] Observation start time (MET)	258245903.184000	258245527.4094			
Observation start date	2006-03-08T22:57:18	2006-03-08T22:52:07			
[s] Observation end time (MET)	258250803.184000	258252254.99722			
Observation end date	2006-03-09T00:18:58	2006-03-09T00:44:14			
Read mode	TIMED	TIMED			

2.3 Aspect



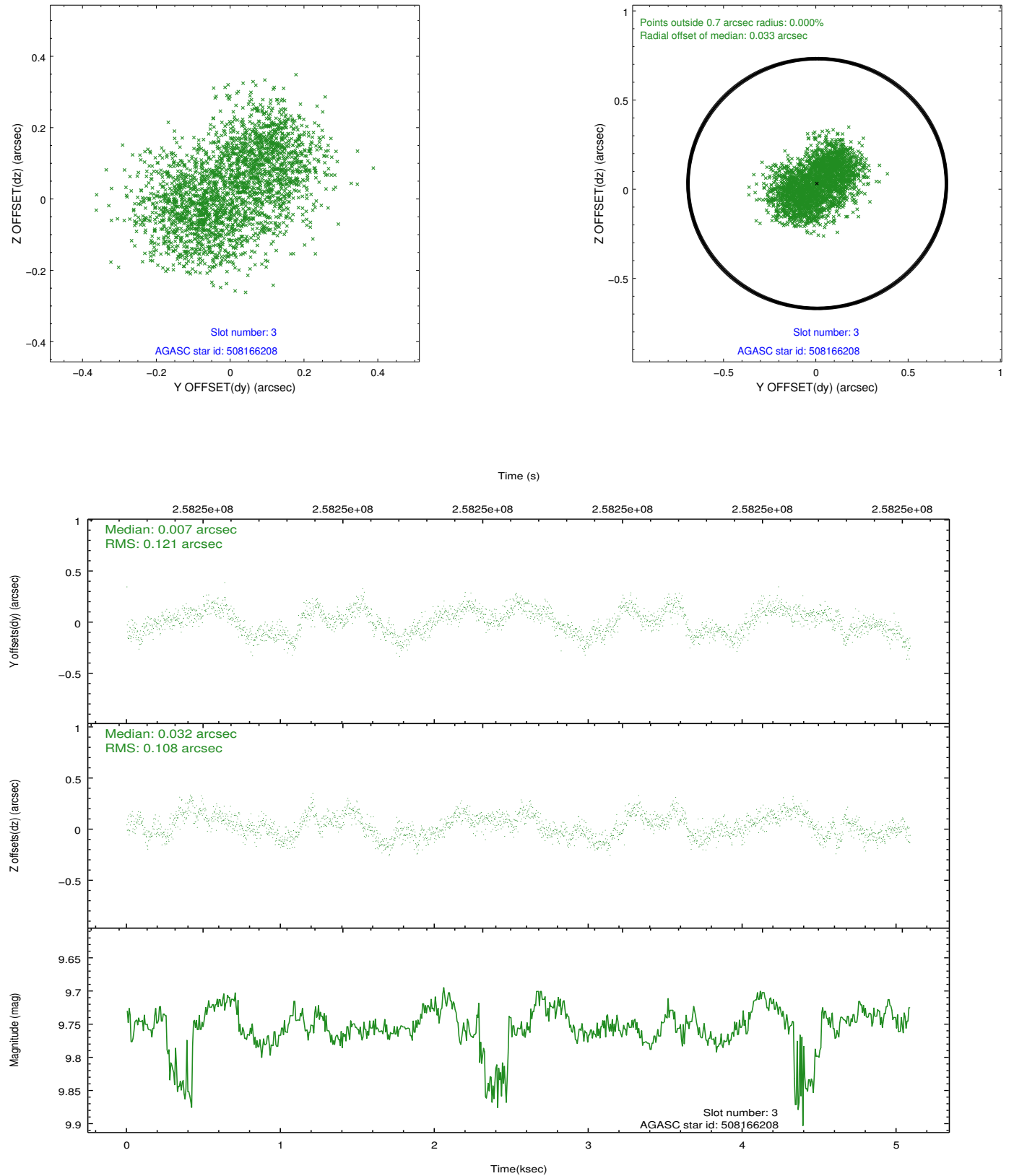


Slot Statistics

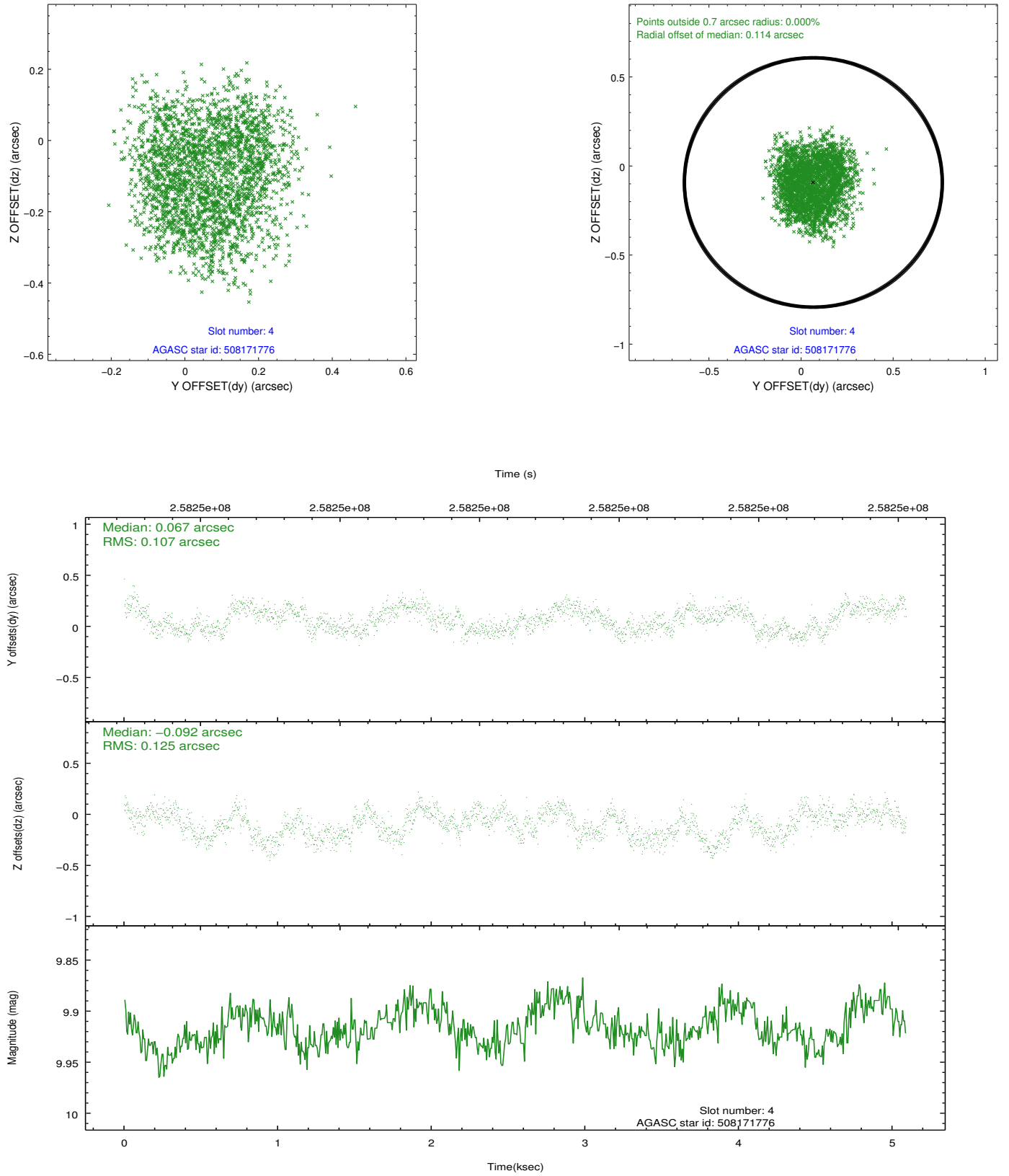
slot	status	id	mag	n_pts	med_dy	med_dz	dr1	dr2	ra	dec	mean_y	mean_z
0	FID	ACIS-I-1	7.24	1242	-0.046	0.017	0.009	0.017	0.000000	0.000000	931.42	-834.58
1	FID	ACIS-I-2	7.14	1242	-0.160	-0.069	0.007	0.012	0.000000	0.000000	-762.12	-841.67
2	FID	ACIS-I-4	7.17	1242	0.107	0.119	0.006	0.012	0.000000	0.000000	2150.95	1064.70
3	GUIDE	508166208	9.75	2478	0.007	0.032	0.177	0.264	243.617118	54.978511	740.86	-737.15
4	GUIDE	508171776	9.92	2473	0.067	-0.092	0.179	0.265	242.594500	54.477463	-647.48	1679.93
5	GUIDE	508182712	9.72	2482	0.046	0.093	0.165	0.256	244.438652	54.663250	-664.58	-2225.08
6	GUIDE	508183040	9.44	2483	0.038	-0.102	0.136	0.217	243.957509	54.419234	-1364.27	-1090.28
7	GUIDE	508576792	9.03	2482	-0.164	0.075	0.113	0.173	244.272390	55.269176	1540.39	-2244.02

2.4 Star Slots

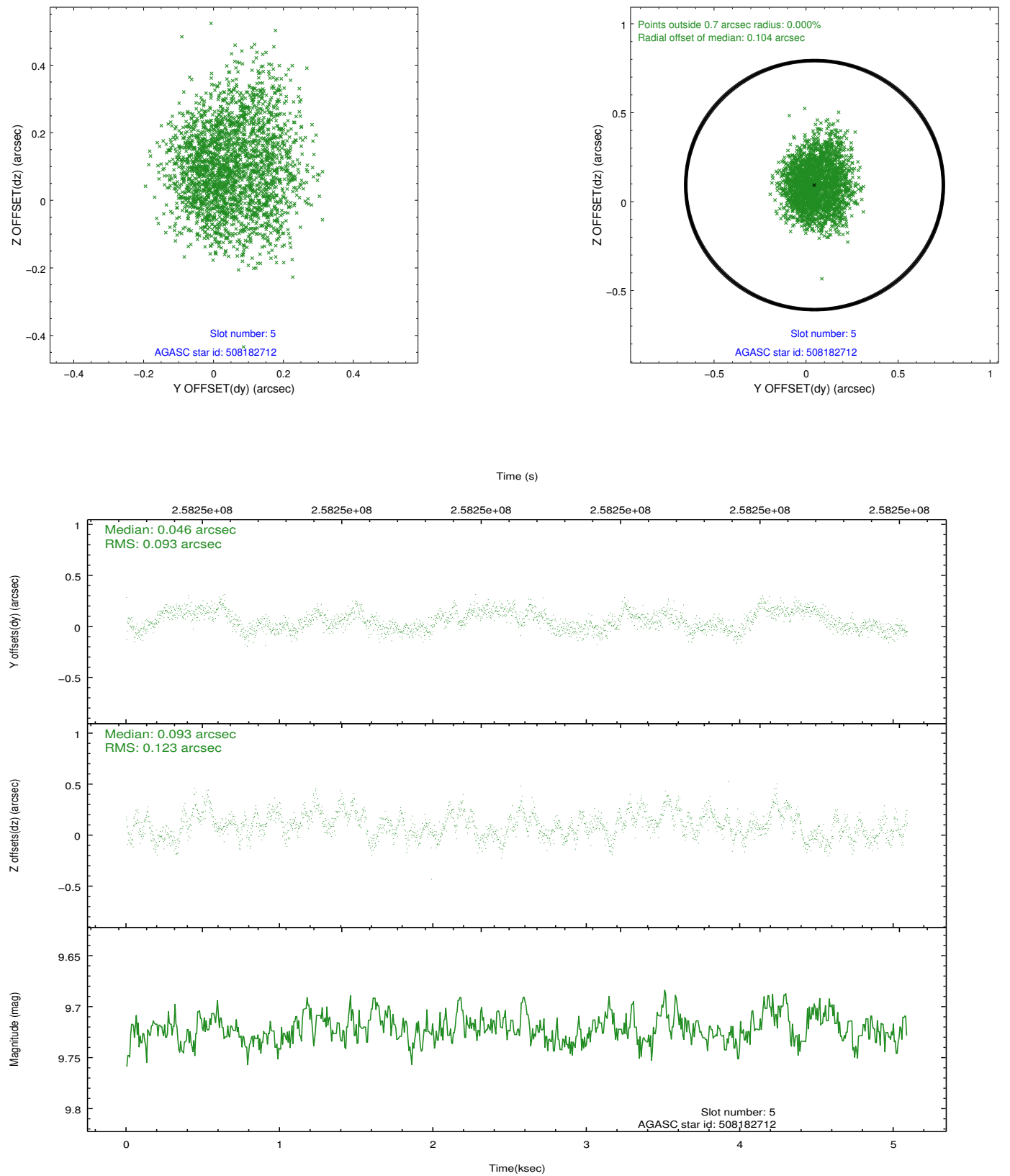
2.4.1 Slot 3



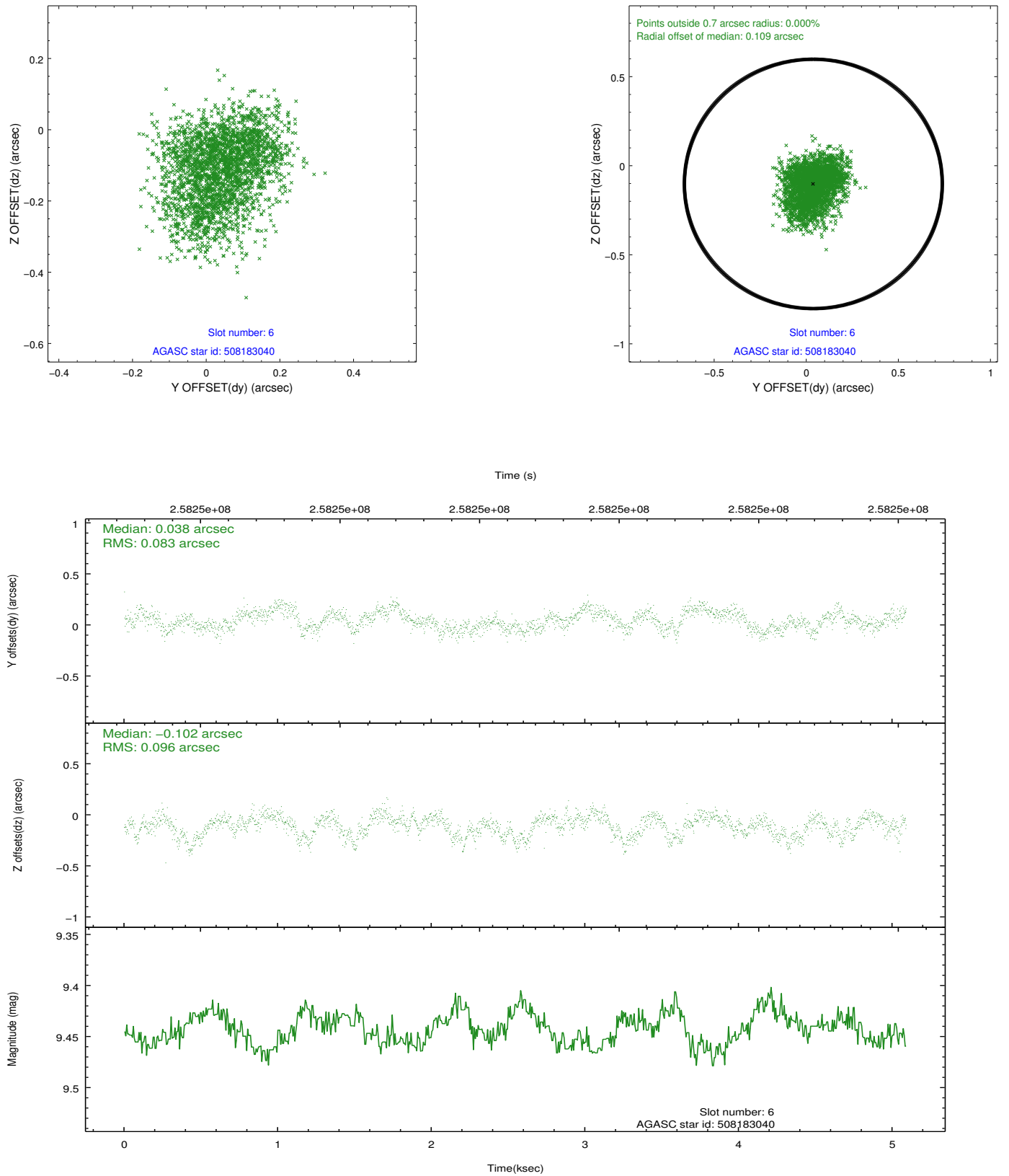
2.4.2 Slot 4



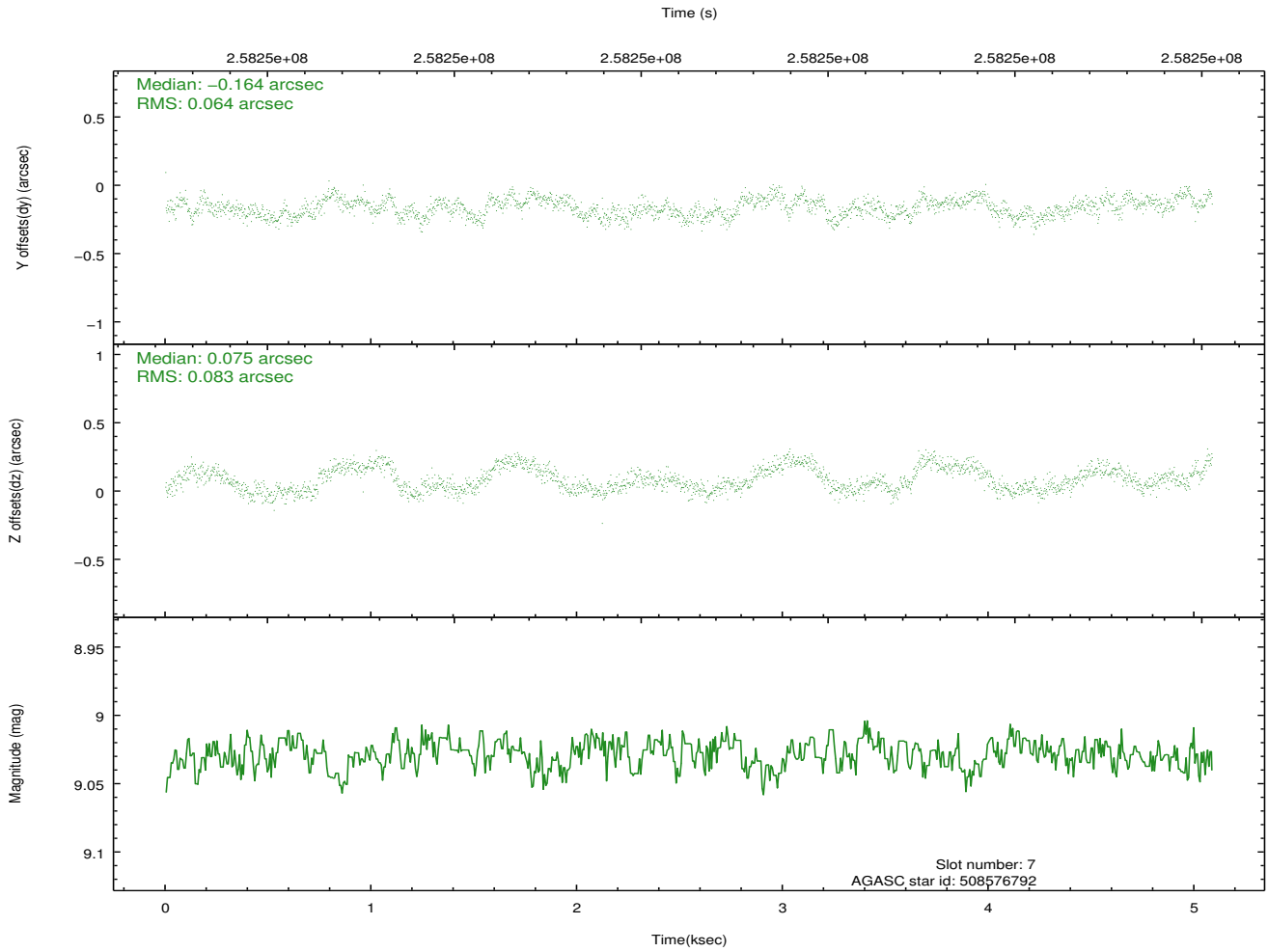
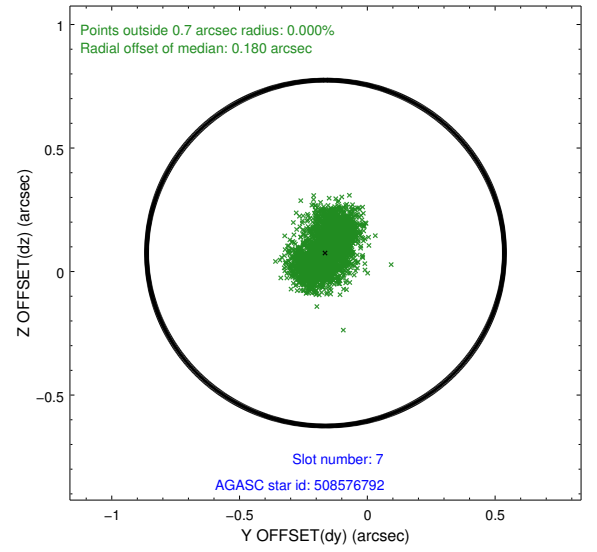
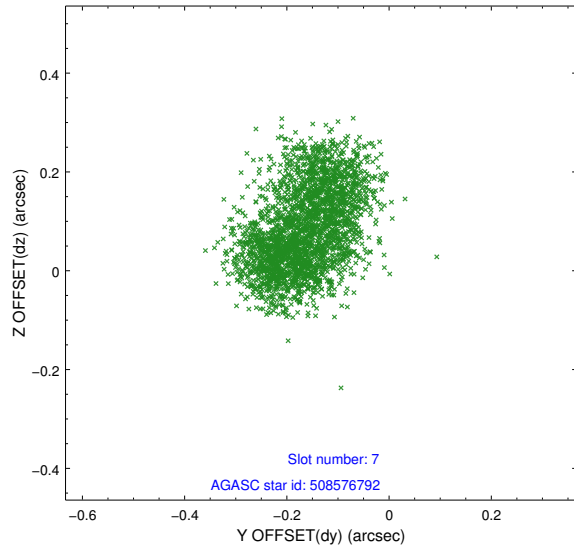
2.4.3 Slot 5



2.4.4 Slot 6

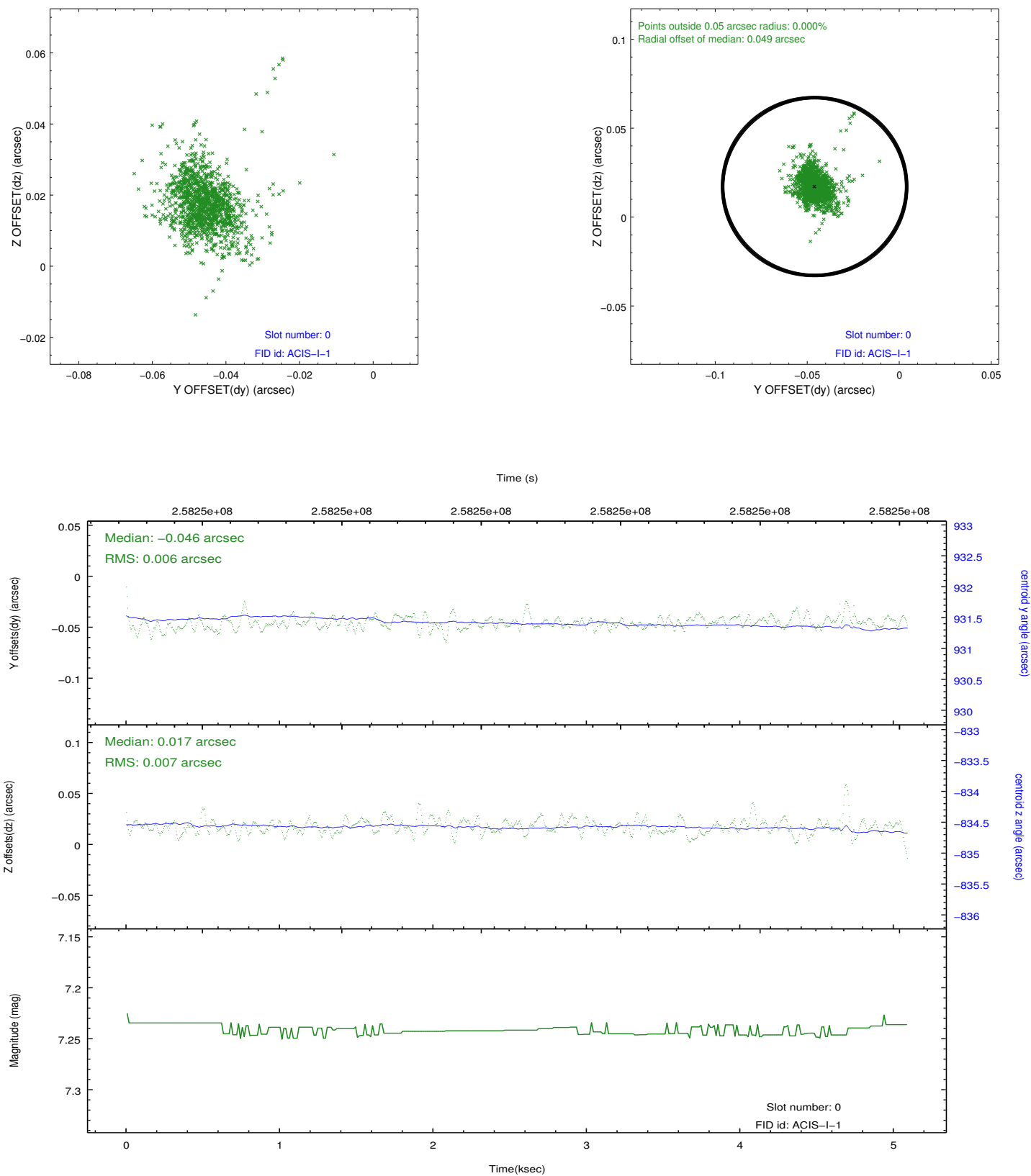


2.4.5 Slot 7

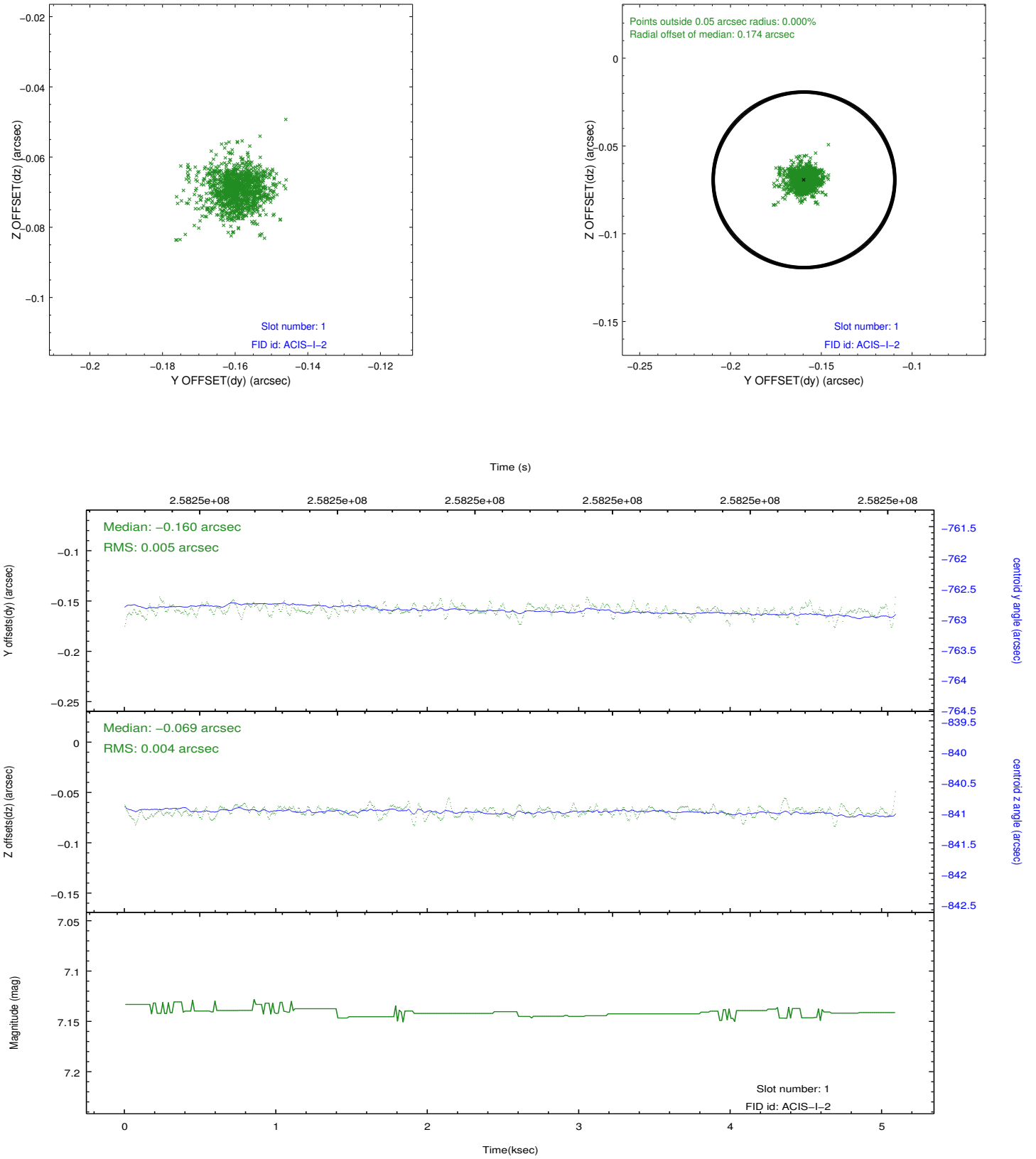


2.5 FID Slots

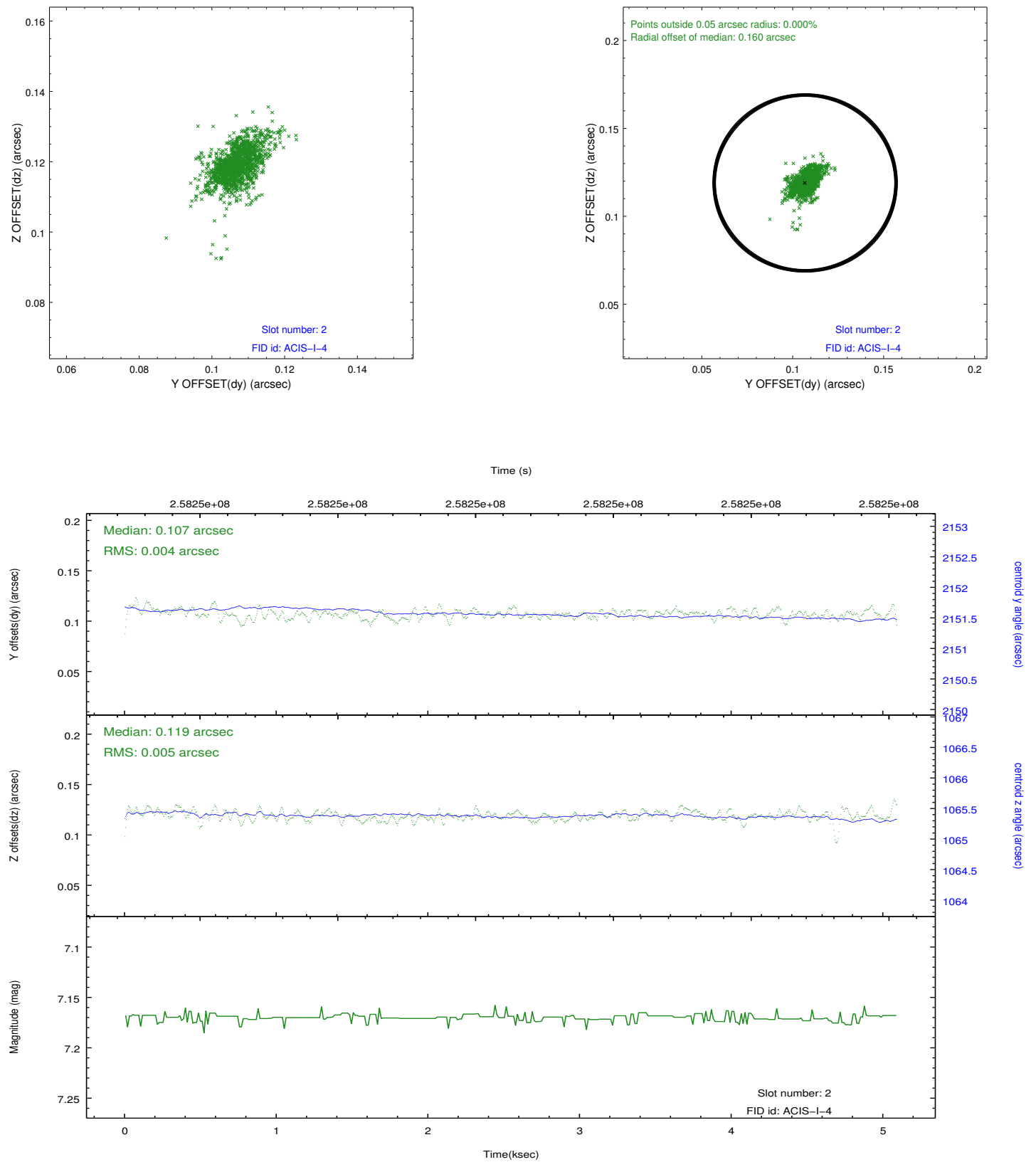
2.5.1 Slot 0



2.5.2 Slot 1



2.5.3 Slot 2



A Summary

A.1 Status

V&V Scientist	Beth Sundheim
V&V Date (YYYY-MM-DD)	2012.03.28
V&V Edition	1
V&V Disposition and Status	OK
V&V Charge Time	4.65919998

A.2 Comments

Joint proposal with NOAO.