

# V&V Reference Report

## L2 ASCDS Version : 8.4.4

Observation 58424 - L2 Version 2  
Chandra X-Ray Center

L2 Processing Date : Apr 23 2012

## Contents

<b>1</b>	<b>Front</b>	<b>2</b>
<b>2</b>	<b>OBI</b>	<b>3</b>
2.1	OBI . . . . .	3
2.1.1	Images . . . . .	3
2.1.2	Bias . . . . .	3
2.1.3	Parameters . . . . .	4
2.1.4	Events . . . . .	4
2.2	Compared Parameters . . . . .	5
2.3	Star Slots . . . . .	6
2.4	FID Slots . . . . .	6
<b>A</b>	<b>Summary</b>	<b>7</b>
A.1	Status . . . . .	7
A.2	Comments . . . . .	7

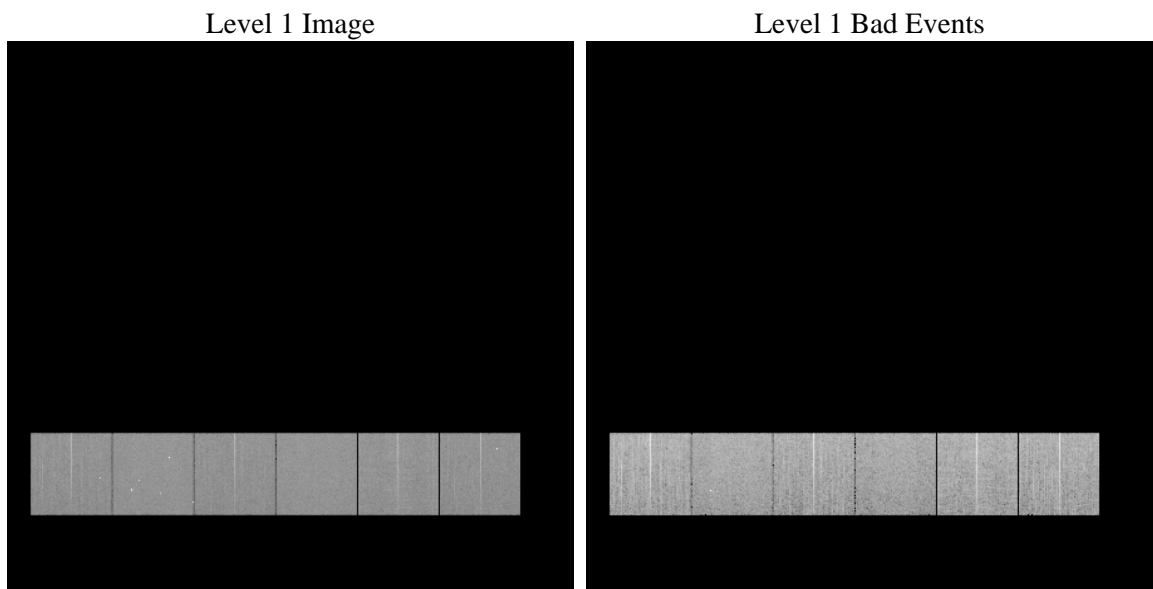
# 1 Front

seq_num	&#160	Sequence number
obs_id	58424	Observation id
title	ACIS-456789 diagnostics	Proposal title
observer	CHANDRA engineering request/realtime commanding	Principal investig
object	&#160	Source name
dtcycle	0	&#160
cycle	P	events from which exps? Prim/Second/Both
ra_targ	0.0	Observer's specified target RA [deg]
dec_targ	0.0	Observer's specified target Dec [deg]
ra_nom	216.97725931129	Nominal RA [deg]
dec_nom	0.1971583648993	Nominal Dec [deg]
roll_nom	157.48818634235	Nominal Roll [deg]
revision	2	Processing version of data
ontime	7794.1602259278	Sum of GTIs [s]
livetime	7695.4658760673	Livetime [s]
ontime4	7794.0371059179	Sum of GTIs [s]
ontime5	7794.1191859245	Sum of GTIs [s]
ontime6	7794.0781459212	Sum of GTIs [s]
ontime7	7794.1602259278	Sum of GTIs [s]
ontime8	7793.9960659146	Sum of GTIs [s]
ontime9	7794.2012659311	Sum of GTIs [s]
l2events	728592	Number of level 2 events

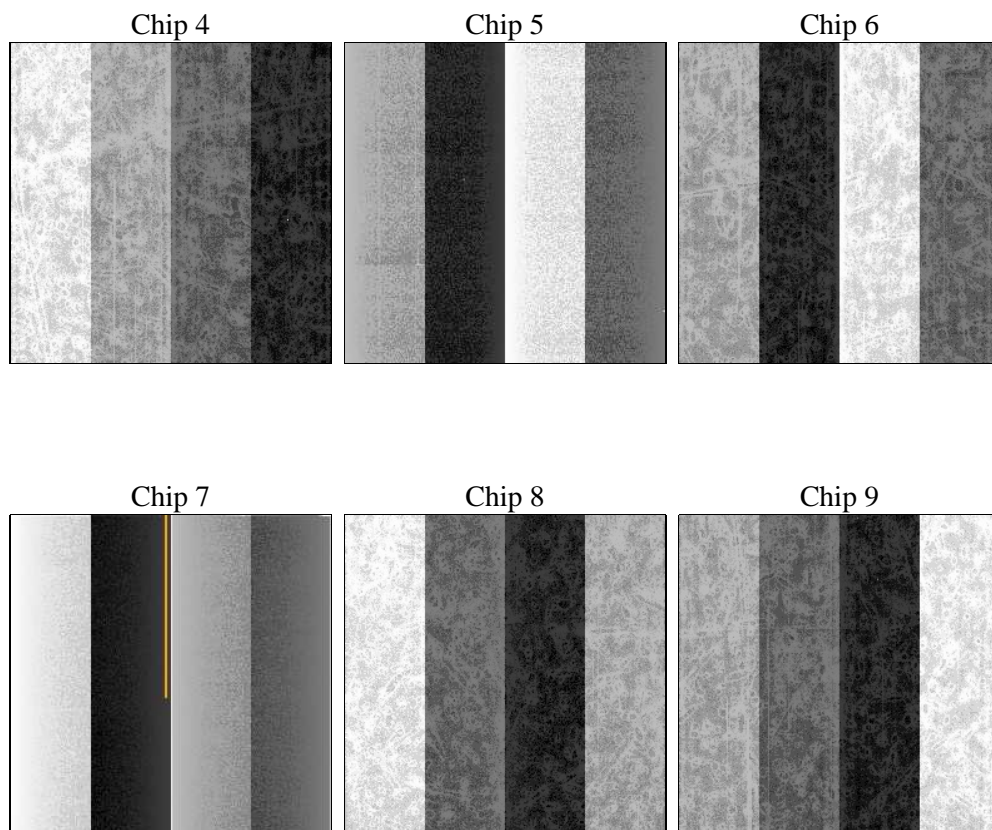
## 2 OBI

### 2.1 OBI

#### 2.1.1 Images



#### 2.1.2 Bias



### 2.1.3 Parameters

obi_num	0	Obi number	sched_exp_time	0.0	[s] Scheduled observation exposure time
ascdsver	8.4.4	Processing system revision	ontime	7794.1602259278	Sum of GTIs [s]
caldsver	4.4.9	&#160	ontime4	7794.0371059179	Sum of GTIs [s]
date	2012-04-23T21:51:38	Date and time of file creation	ontime5	7794.1191859245	Sum of GTIs [s]
revision	2	Processing version of data	ontime6	7794.0781459212	Sum of GTIs [s]
			ontime7	7794.1602259278	Sum of GTIs [s]
			ontime8	7793.9960659146	Sum of GTIs [s]
			ontime9	7794.2012659311	Sum of GTIs [s]
			l1events	1205970	Number of level 1 events

### 2.1.4 Events

	ccd 4	ccd 5	ccd 6	ccd 7	ccd 8	ccd 9		ccd 4	ccd 5	ccd 6	ccd 7	ccd 8	ccd 9
level 1 events	193962	211464	191077	208799	207649	193019	grade 0 events	67292	29127	65809	32074	68948	66154
rejected events	77540	64355	67923	59105	74168	72529		34%	13%	34%	15%	33%	34%
rejected %	39%	30%	35%	28%	35%	37%	grade 1 events	621	215	391	161	443	539
								0%	0%	0%	0%	0%	0%
							grade 2 events	18422	51205	21988	32283	24306	20496
								9%	24%	11%	15%	11%	10%
							grade 3 events	7884	7698	7757	14691	9124	7732
								4%	3%	4%	7%	4%	4%
							grade 4 events	7817	8086	7782	14465	9305	7785
								4%	3%	4%	6%	4%	4%
							grade 5 events	3835	9319	4057	10076	5006	4500
								1%	4%	2%	4%	2%	2%
							grade 6 events	15007	50993	19818	56181	21798	18323
								7%	24%	10%	26%	10%	9%
							grade 7 events	73084	54821	63475	48868	68719	67490
								37%	25%	33%	23%	33%	34%

## 2.2 Compared Parameters

Parameter	Planned	Actual	Parameter	Planned	Actual
Instrument	ACIS	ACIS	Obspar format version number	7	7
Detector	ACIS-456789	ACIS-456789	Obspar file type	PREDICTED	ACTUAL
Grating	NONE	NONE	Obspar update status	NONE	UPDATED
Data mode	FAINT	FAINT	On-chip summing requested	N	N
Observation mode	SECONDARY	SECONDARY	Subarray requested	NONE	NONE
[deg] Pointing RA	0	216.9772593112921	Alternating exposures requested	N	N
[deg] Pointing Dec	0	0.1971583648993028	[s] Primary exposure time	3.2	3.2
[deg] Pointing Roll	0.0	157.4881863423494			
[mm] SIM focus pos	-0.684267	-0.7809083437167272			
[mm] SIM defocus	0	0.7524282956875696			
[mm] SIM translation stage pos	-190.132523	250.466033080201			
[mm] SIM translation stage offset	0	-0.01005468664627074			
[s] Observation start time (MET)	293794082.470709	293794081.44572			
Observation start date	2007-04-24T09:28:02	2007-04-24T09:28:01			
[s] Observation end time (MET)	293823762.372125	293823761.34713			
Observation end date	2007-04-24T17:42:42	2007-04-24T17:42:41			
Read mode	TIMED	TIMED			

## **2.3 Star Slots**

## **2.4 FID Slots**

## A Summary

### A.1 Status

V&V Scientist	Jen Lauer
V&V Date (YYYY-MM-DD)	2012.04.24
V&V Edition	1
V&V Disposition and Status	OK
V&V Charge Time	7.7941602259278

### A.2 Comments