

V&V Reference Report

L2 ASCDS Version : 8.4.4

Observation 57664 - L2 Version 2
Chandra X-Ray Center

L2 Processing Date : May 19 2012

Contents

1	Front	2
2	OBI	3
2.1	OBI	3
2.1.1	Images	3
2.1.2	Bias	3
2.1.3	Parameters	4
2.1.4	Events	4
2.2	Compared Parameters	5
2.3	Star Slots	6
2.4	FID Slots	6
A	Summary	7
A.1	Status	7
A.2	Comments	7

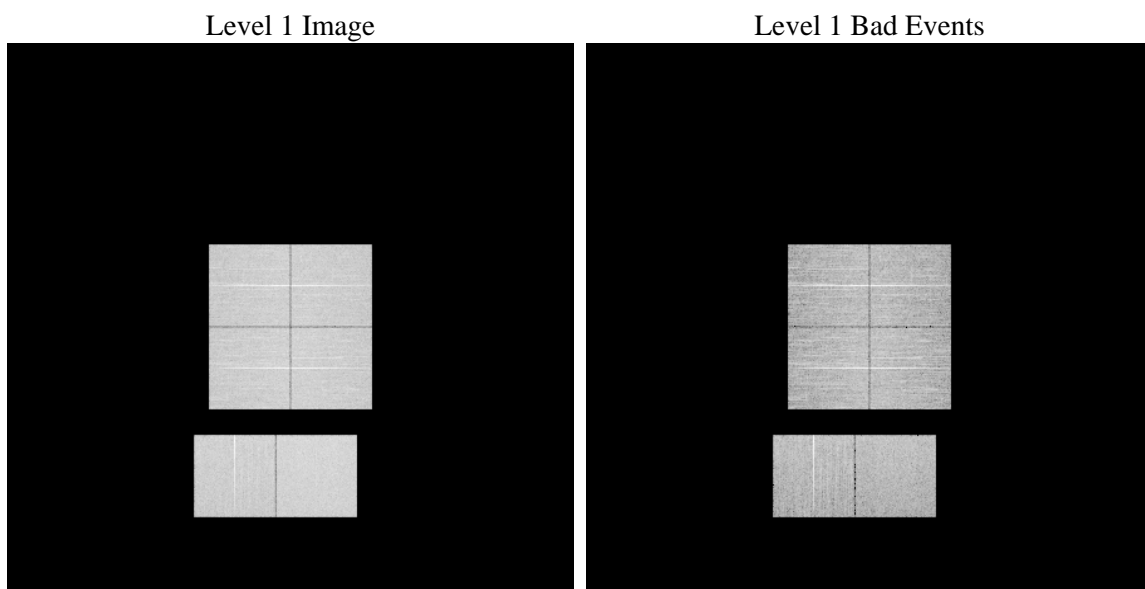
1 Front

seq_num	 	Sequence number
obs_id	57664	Observation id
title	ACIS-012367 diagnostics	Proposal title
observer	CHANDRA engineering request/realtime commanding	Principal investig
object	 	Source name
dtcycle	0	
cycle	P	events from which exps? Prim/Second/Both
ra_targ	0.0	Observer's specified target RA [deg]
dec_targ	0.0	Observer's specified target Dec [deg]
ra_nom	330.01768851436	Nominal RA [deg]
dec_nom	-47.968765346158	Nominal Dec [deg]
roll_nom	30.854947252655	Nominal Roll [deg]
revision	2	Processing version of data
ontime	8182.3999695778	Sum of GTIs [s]
livetime	8078.7894943132	Livetime [s]
ontime0	8182.3999695778	Sum of GTIs [s]
ontime1	8182.3999695778	Sum of GTIs [s]
ontime2	8182.3999695778	Sum of GTIs [s]
ontime3	8182.3999695778	Sum of GTIs [s]
ontime6	8182.3999695778	Sum of GTIs [s]
ontime7	8182.3999695778	Sum of GTIs [s]
l2events	565719	Number of level 2 events

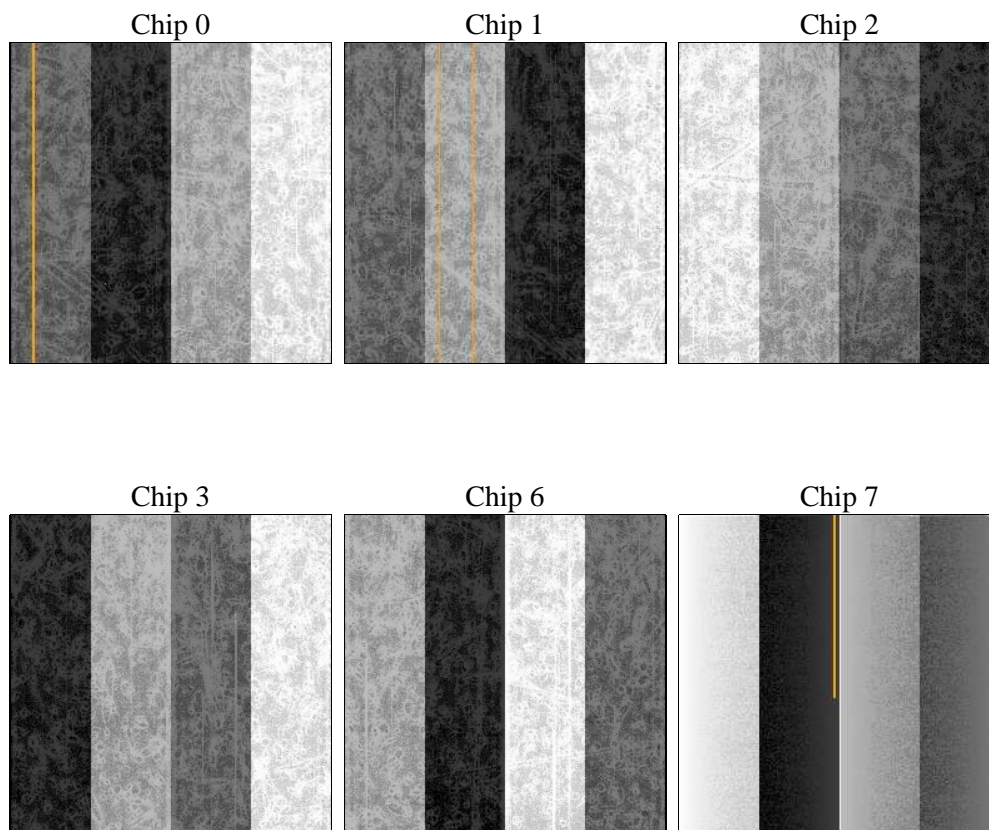
2 OBI

2.1 OBI

2.1.1 Images



2.1.2 Bias



2.1.3 Parameters

obi_num	0	Obi number	sched_exp_time	0.0	[s] Scheduled observation exposure time
ascdsver	8.4.4	Processing system revision	ontime	8182.3999695778	Sum of GTIs [s]
caldsver	4.4.9	 	ontime0	8182.3999695778	Sum of GTIs [s]
date	2012-05-19T02:55:54	Date and time of file creation	ontime1	8182.3999695778	Sum of GTIs [s]
revision	2	Processing version of data	ontime2	8182.3999695778	Sum of GTIs [s]
			ontime3	8182.3999695778	Sum of GTIs [s]
			ontime6	8182.3999695778	Sum of GTIs [s]
			ontime7	8182.3999695778	Sum of GTIs [s]
			l1events	1033570	Number of level 1 events

2.1.4 Events

	ccd 0	ccd 1	ccd 2	ccd 3	ccd 6	ccd 7		ccd 0	ccd 1	ccd 2	ccd 3	ccd 6	ccd 7
level 1 events	164449	163120	169553	170199	169830	196419	grade 0 events	50017	49980	51701	52442	51686	25576
rejected events	72183	69793	76396	76453	72978	68289		30%	30%	30%	30%	30%	13%
rejected %	43%	42%	45%	44%	42%	34%	grade 1 events	338	344	421	434	368	164
								0%	0%	0%	0%	0%	0%
							grade 2 events	16758	17429	16212	16205	17320	27868
								10%	10%	9%	9%	10%	14%
							grade 3 events	6181	6135	6394	6314	6437	12197
								3%	3%	3%	3%	3%	6%
							grade 4 events	6150	6328	6396	6370	6210	12010
								3%	3%	3%	3%	3%	6%
							grade 5 events	4053	4114	3659	4222	4290	10753
								2%	2%	2%	2%	2%	5%
							grade 6 events	14205	14544	13490	13504	16301	51937
								8%	8%	7%	7%	9%	26%
							grade 7 events	66747	64246	71280	70708	67218	55914
								40%	39%	42%	41%	39%	28%

2.2 Compared Parameters

Parameter	Planned	Actual	Parameter	Planned	Actual
Instrument	ACIS	ACIS	Obspar format version number	7	7
Detector	ACIS-012367	ACIS-012367	Obspar file type	PREDICTED	ACTUAL
Grating	NONE	NONE	Obspar update status	NONE	UPDATED
Data mode	FAINT	FAINT	On-chip summing requested	N	N
Observation mode	SECONDARY	SECONDARY	Subarray requested	NONE	NONE
[deg] Pointing RA	0	330.0176885143644	Alternating exposures requested	N	N
[deg] Pointing Dec	0	-47.96876534615838	[s] Primary exposure time	3.2	3.2
[deg] Pointing Roll	0.0	30.85494725265453			
[mm] SIM focus pos	-1.429586	-0.7809083437167272			
[mm] SIM defocus	0.1037507710433287	0.7524282956875696			
[mm] SIM translation stage pos	250.455976	250.466033080201			
[mm] SIM translation stage offset	0	-0.01005468664627074			
[s] Observation start time (MET)	334052964.31748	334052963.29247			
Observation start date	2008-08-02T08:29:24	2008-08-02T08:29:23			
[s] Observation end time (MET)	334065877.268113	334065876.2431			
Observation end date	2008-08-02T12:04:37	2008-08-02T12:04:36			
Read mode	TIMED	TIMED			

2.3 Star Slots

2.4 FID Slots

A Summary

A.1 Status

V&V Scientist	Beth Sundheim
V&V Date (YYYY-MM-DD)	2012.05.27
V&V Edition	1
V&V Disposition and Status	OK
V&V Charge Time	8.1823999695778

A.2 Comments