

V&V Reference Report

L2 ASCDS Version : 8.5.1.1

Observation 5764 - L2 Version 3
Chandra X-Ray Center

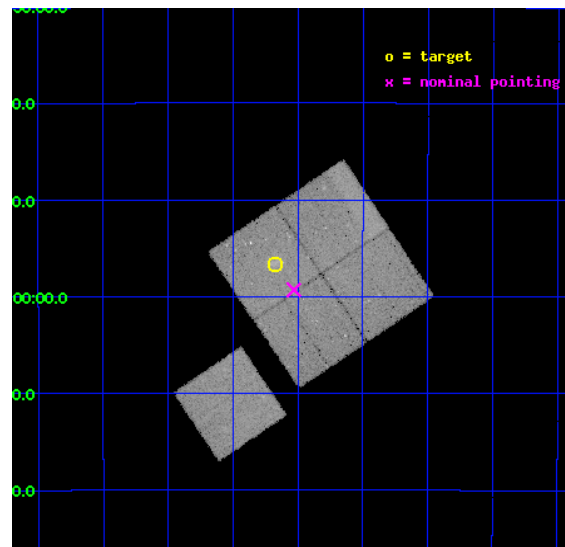
L2 Processing Date : Dec 21 2012

Contents

1	Front	2
2	OBI	3
2.1	OBI	3
2.1.1	Images	3
2.1.2	Bias	3
2.1.3	Parameters	4
2.1.4	Events	4
2.2	Compared Parameters	5
2.3	Aspect	6
2.4	Star Slots	9
2.4.1	Slot 3	9
2.4.2	Slot 4	10
2.4.3	Slot 5	11
2.4.4	Slot 6	12
2.4.5	Slot 7	13
2.5	FID Slots	14
2.5.1	Slot 0	14
2.5.2	Slot 1	15
2.5.3	Slot 2	16
A	Summary	17
A.1	Status	17
A.2	Comments	17

1 Front

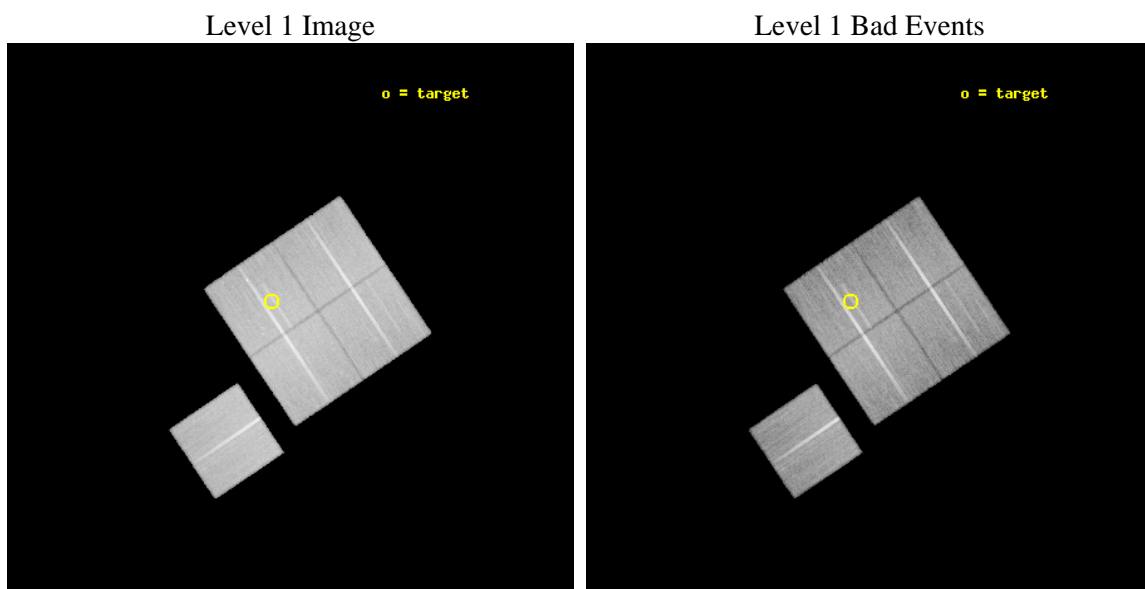
seq_num	800477	Sequence number
obs_id	5764	Observation id
title	DARK ENERGY WITH X-RAY CLUSTERS: CHANDRA OBSERVATIONS OF 41 HIGH-REDSHIFT CLUSTERS FROM THE 400 deg^2 ROSAT PSPC SURVEY	Proposal titl
observer	Dr. Alexey Vikhlinin	Principal investigator
object	cl0333-2456	Source name
dtcycle	0	
cycle	P	events from which exps? Prim/Second/Both
ra_targ	53.292917	Observer's specified target RA [deg]
dec_targ	-24.944444	Observer's specified target Dec [deg]
ra_nom	53.257656151295	Nominal RA [deg]
dec_nom	-24.988368939088	Nominal Dec [deg]
roll_nom	236.04666946508	Nominal Roll [deg]
revision	3	Processing version of data
ontime	44171.817914784	Sum of GTIs [s]
livetime	43594.680594908	Livetime [s]
ontime0	44174.958944738	Sum of GTIs [s]
ontime1	44178.099915028	Sum of GTIs [s]
ontime2	44171.817994535	Sum of GTIs [s]
ontime3	44171.817914784	Sum of GTIs [s]
ontime6	44174.95892489	Sum of GTIs [s]
l2events	160628	Number of level 2 events



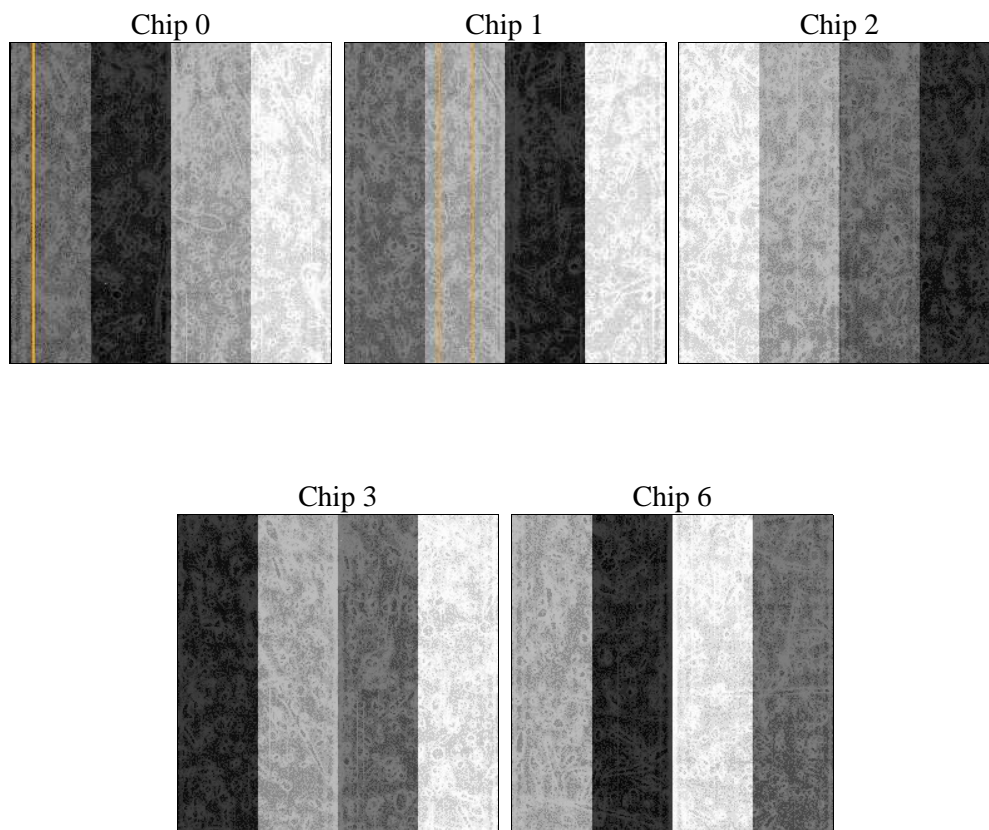
2 OBI

2.1 OBI

2.1.1 Images



2.1.2 Bias



2.1.3 Parameters

obi_num	0	Obi number	sched_exp_time	44000.000000	[s] Scheduled observation exposure time
ascdsver	8.5.1.1	Processing system revision	ontime	44171.817914784	Sum of GTIs [s]
caldsver	4.5.5	 	ontime0	44174.958944738	Sum of GTIs [s]
date	2012-12-21T18:24:40	Date and time of file creation	ontime1	44178.099915028	Sum of GTIs [s]
revision	3	Processing version of data	ontime2	44171.817994535	Sum of GTIs [s]
			ontime3	44171.817914784	Sum of GTIs [s]
			ontime6	44174.95892489	Sum of GTIs [s]
			l1events	1420138	Number of level 1 events

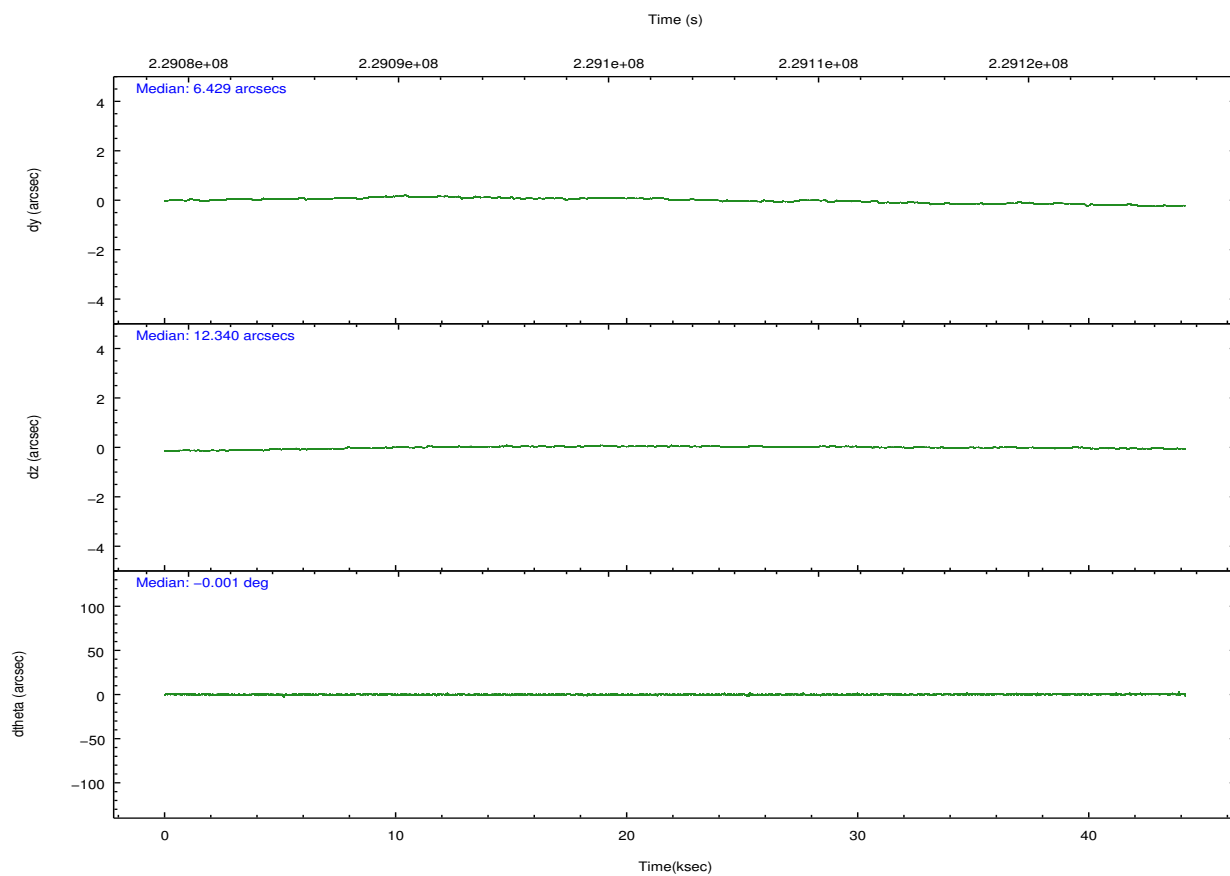
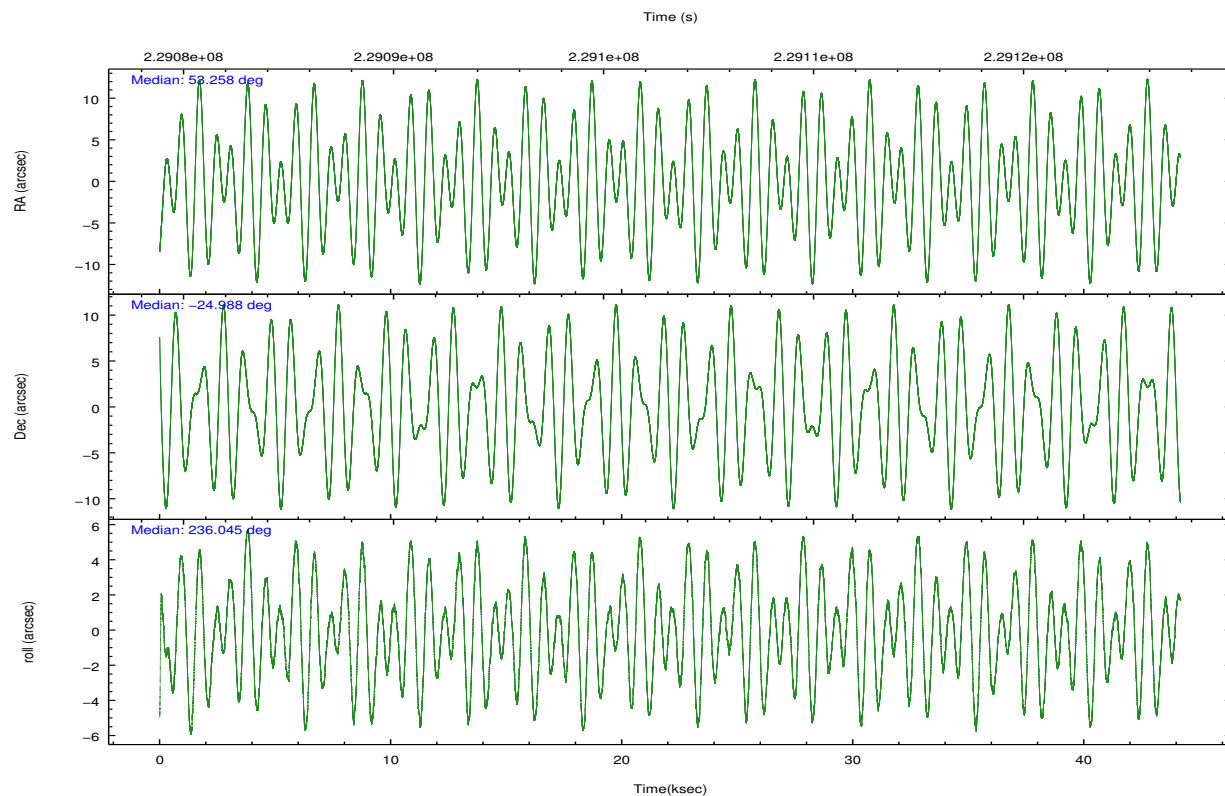
2.1.4 Events

	ccd 0	ccd 1	ccd 2	ccd 3	ccd 6		ccd 0	ccd 1	ccd 2	ccd 3	ccd 6
level 1 events	266898	268827	301615	288329	294469	grade 0 events	14788	17965	15231	16912	16288
rejected events	231102	228212	266160	251156	256241		5%	6%	5%	5%	5%
rejected %	86%	84%	88%	87%	87%	grade 1 events	175	146	209	193	153
							0%	0%	0%	0%	0%
						grade 2 events	7774	8158	7646	7210	7523
							2%	3%	2%	2%	2%
						grade 3 events	3678	3874	3468	3552	3719
							1%	1%	1%	1%	1%
						grade 4 events	3464	3883	3370	3519	3651
							1%	1%	1%	1%	1%
						grade 5 events	10081	10686	9639	11302	10993
							3%	3%	3%	3%	3%
						grade 6 events	6598	7354	6197	6438	7629
							2%	2%	2%	2%	2%
						grade 7 events	220340	216761	255855	239203	244513
							82%	80%	84%	82%	83%

2.2 Compared Parameters

Parameter	Planned	Actual	Parameter	Planned	Actual
Instrument	ACIS	ACIS	Obspar format version number	7	7
Detector	ACIS-01236	ACIS-01236	Obspar file type	PREDICTED	ACTUAL
Grating	NONE	NONE	Obspar update status	NONE	UPDATED
Data mode	VFAINT	VFAINT	Number of optional ACIS chips dropped	0	0
Observation mode	POINTING	POINTING	On-chip summing requested	N	N
[deg] Pointing RA	53.259631	53.25765615129497	Subarray requested	NONE	NONE
[deg] Pointing Dec	-24.961026	-24.98836893908753	Alternating exposures requested	N	N
[deg] Pointing Roll	235.838819	236.0466694650807	[s] Primary exposure time	0.000000	3.1
[mm] SIM focus pos	-0.782348	-0.7809083437167272			
[mm] SIM defocus	0	0.001439871863259334			
[mm] SIM translation stage pos	-225.840463	-225.8433433320239			
[mm] SIM translation stage offset	-7.752	-7.749109670905796			
[s] Observation start time (MET)	229081258.184000	229079897.78099			
Observation start date	2005-04-05T09:39:54	2005-04-05T09:18:17			
[s] Observation end time (MET)	229125258.184000	229126307.7331			
Observation end date	2005-04-05T21:53:14	2005-04-05T22:11:47			
Read mode	TIMED	TIMED			

2.3 Aspect

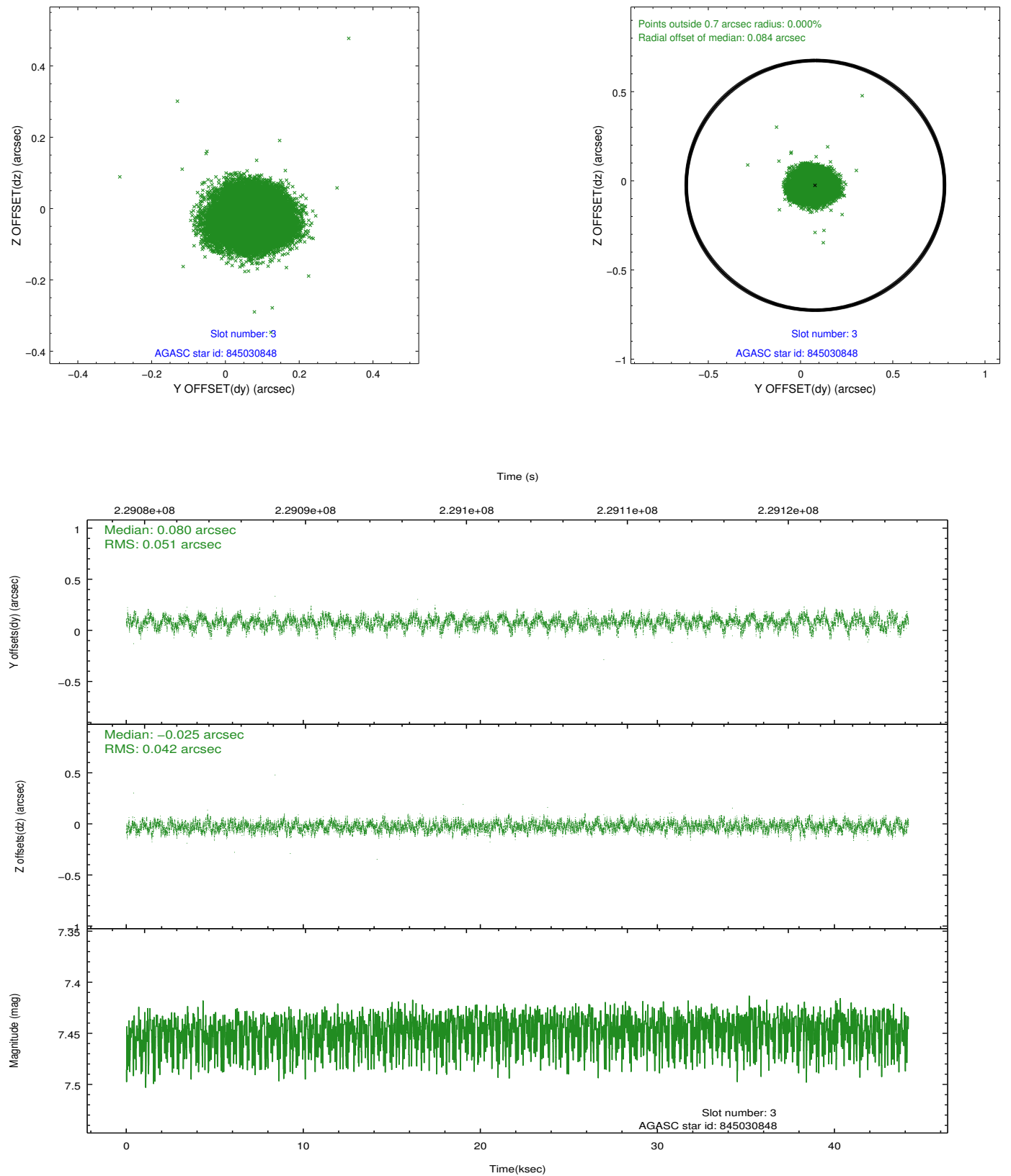


Slot Statistics

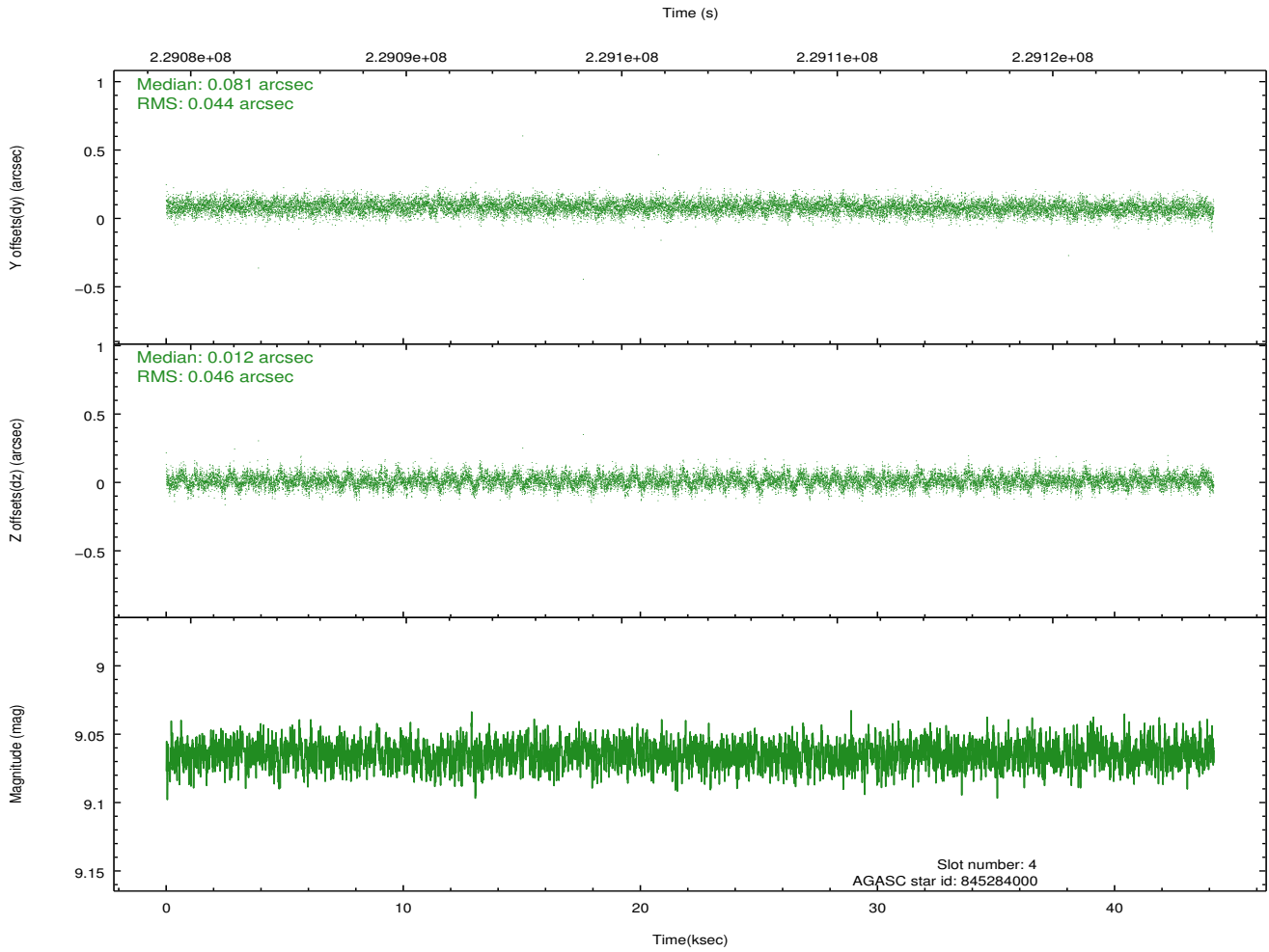
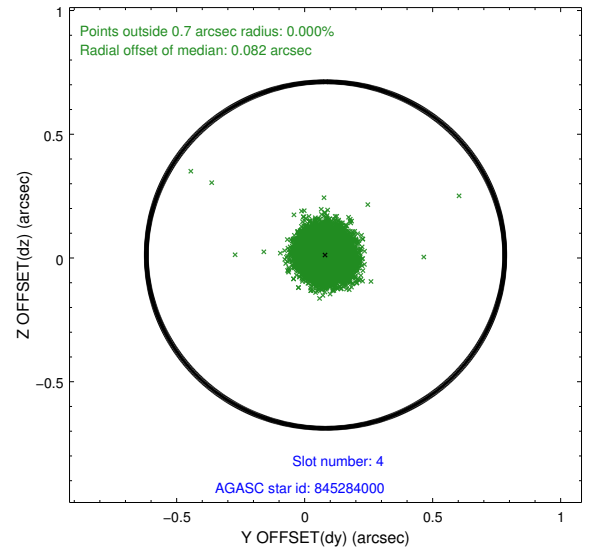
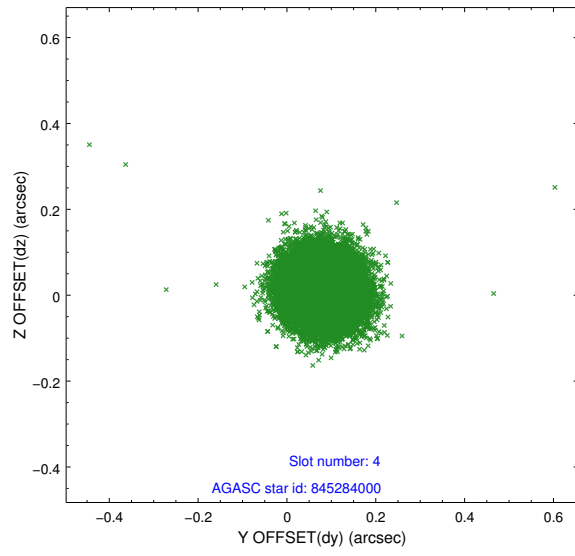
slot	status	id	mag	n_pts	med_dy	med_dz	dr1	dr2	ra	dec	mean_y	mean_z
0	FID	ACIS-I-1	7.23	10775	0.123	-0.088	0.007	0.012	0.000000	0.000000	933.24	-995.05
1	FID	ACIS-I-5	7.22	10777	-0.224	0.117	0.007	0.011	0.000000	0.000000	-1815.18	902.68
2	FID	ACIS-I-6	7.25	10775	0.010	0.042	0.007	0.012	0.000000	0.000000	398.72	1547.08
3	GUIDE	845030848	7.45	21553	0.080	-0.025	0.071	0.112	53.109937	-24.616416	-751.10	-1101.67
4	GUIDE	845284000	9.06	21538	0.081	0.012	0.067	0.109	52.995169	-25.542854	2216.43	466.22
5	GUIDE	845024432	8.27	21544	0.063	0.058	0.051	0.085	53.880799	-24.561353	-2328.60	877.89
6	GUIDE	845027080	9.01	21543	0.047	-0.011	0.092	0.151	54.123172	-24.962599	-1570.04	2340.51
7	GUIDE	845421488	6.21	21552	-0.265	-0.037	0.052	0.080	53.111135	-25.658502	2348.31	1011.79

2.4 Star Slots

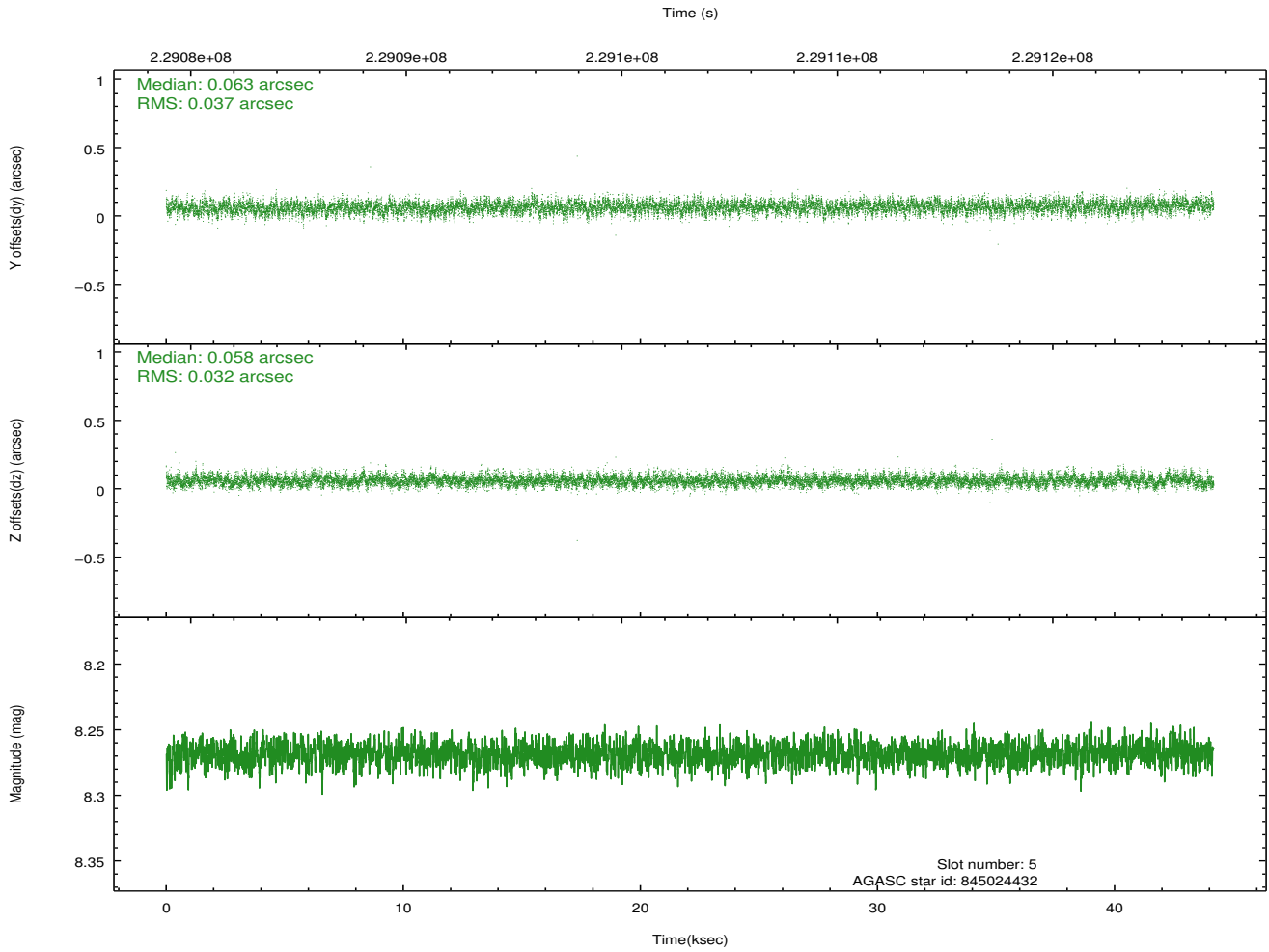
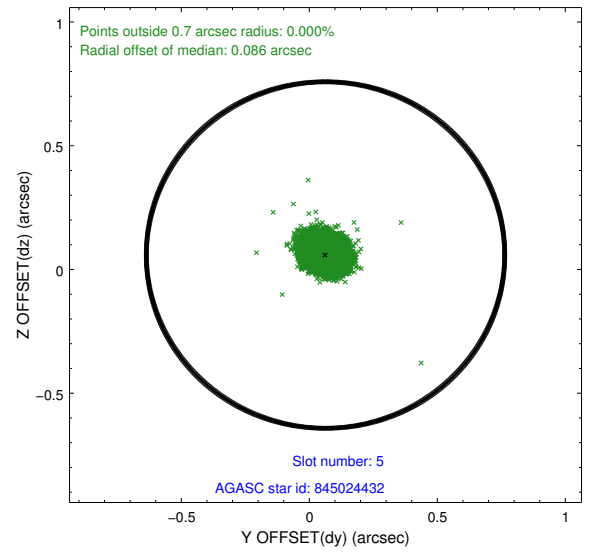
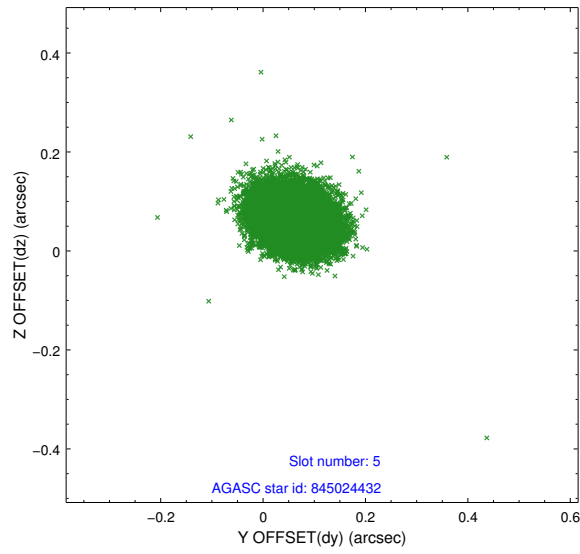
2.4.1 Slot 3



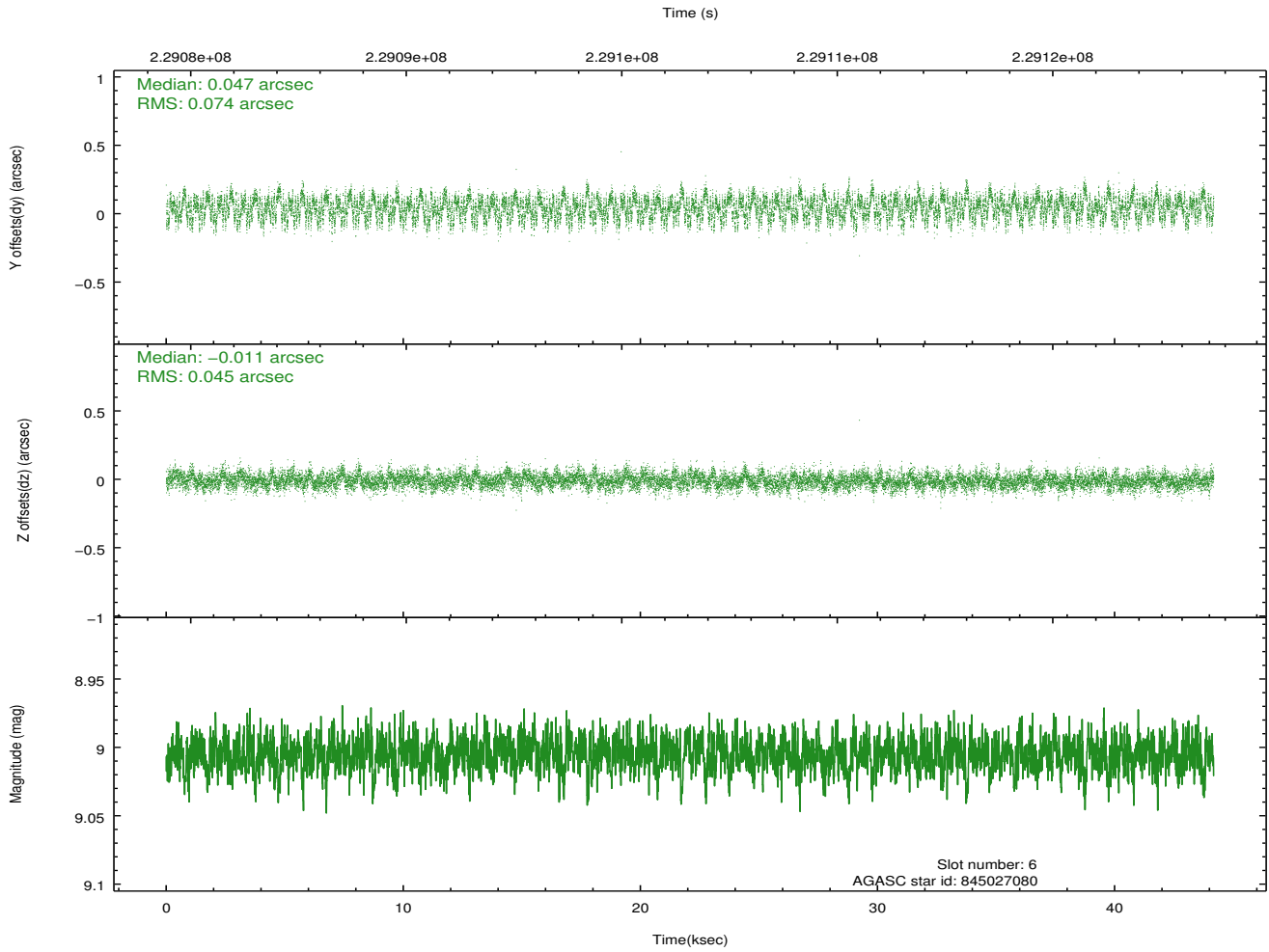
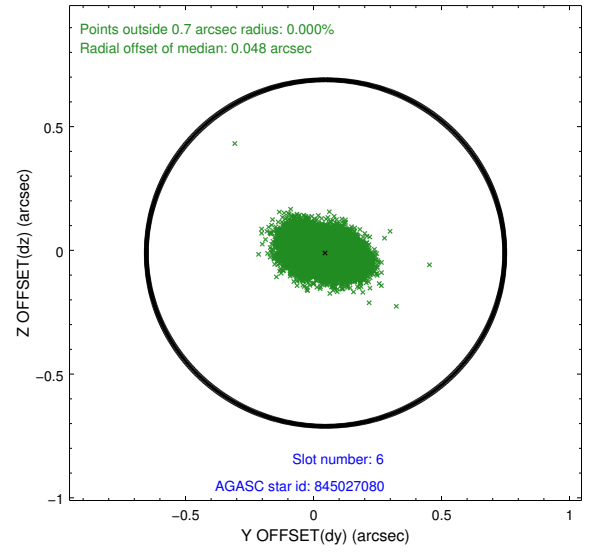
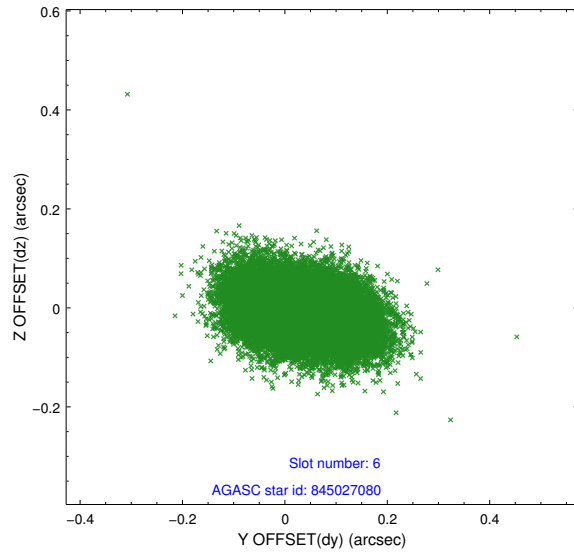
2.4.2 Slot 4



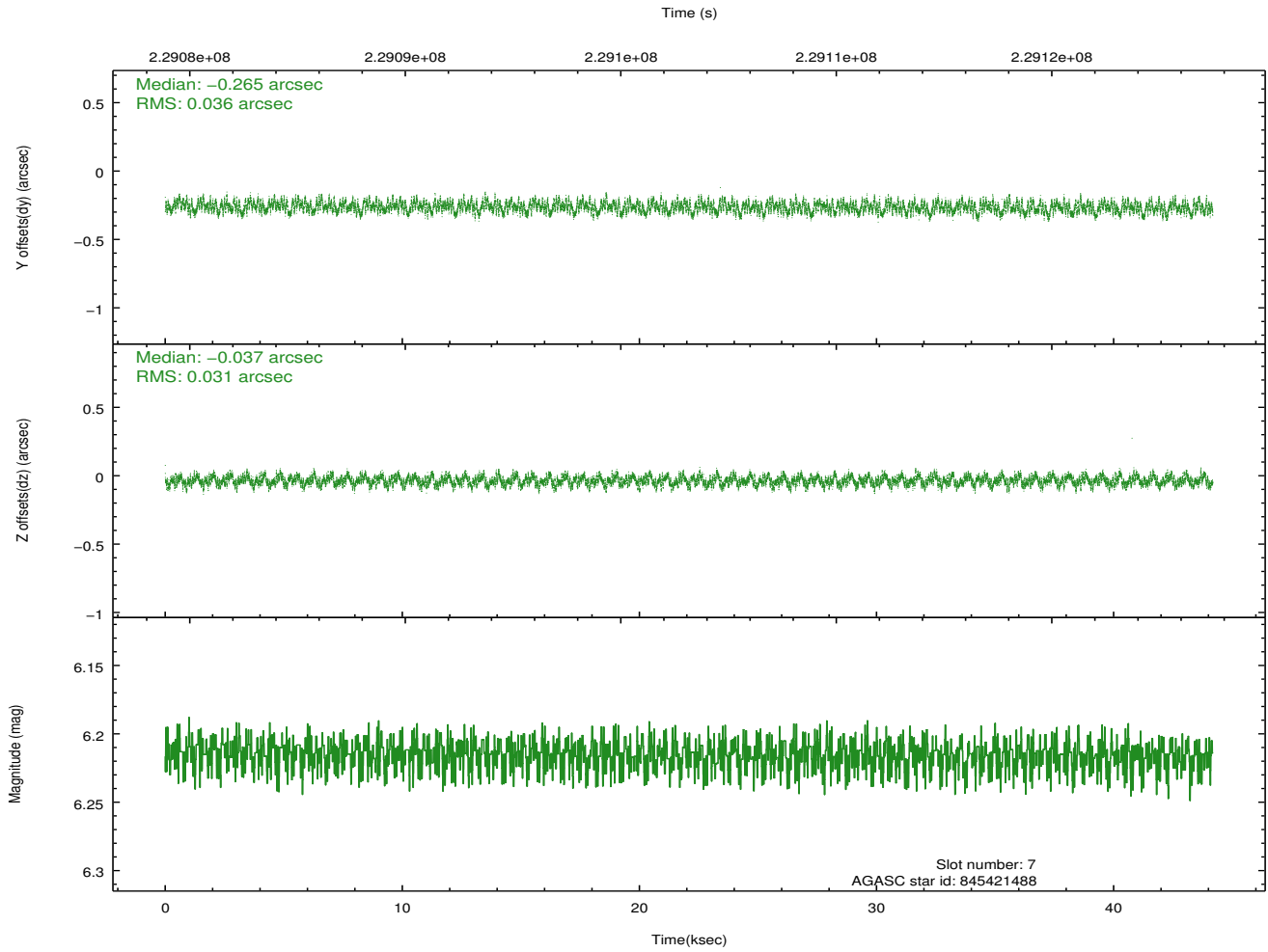
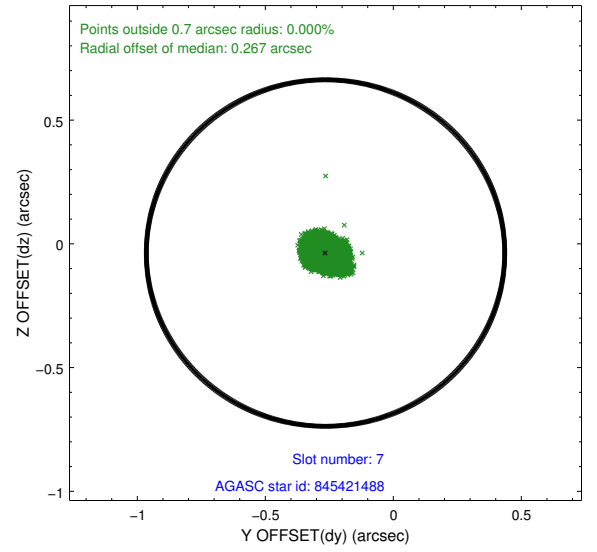
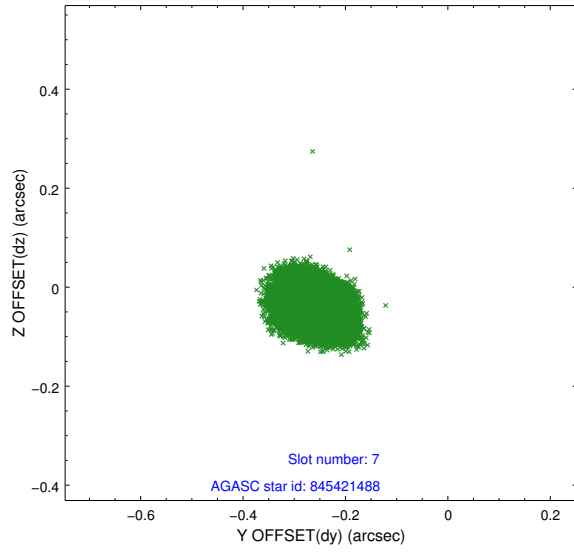
2.4.3 Slot 5



2.4.4 Slot 6

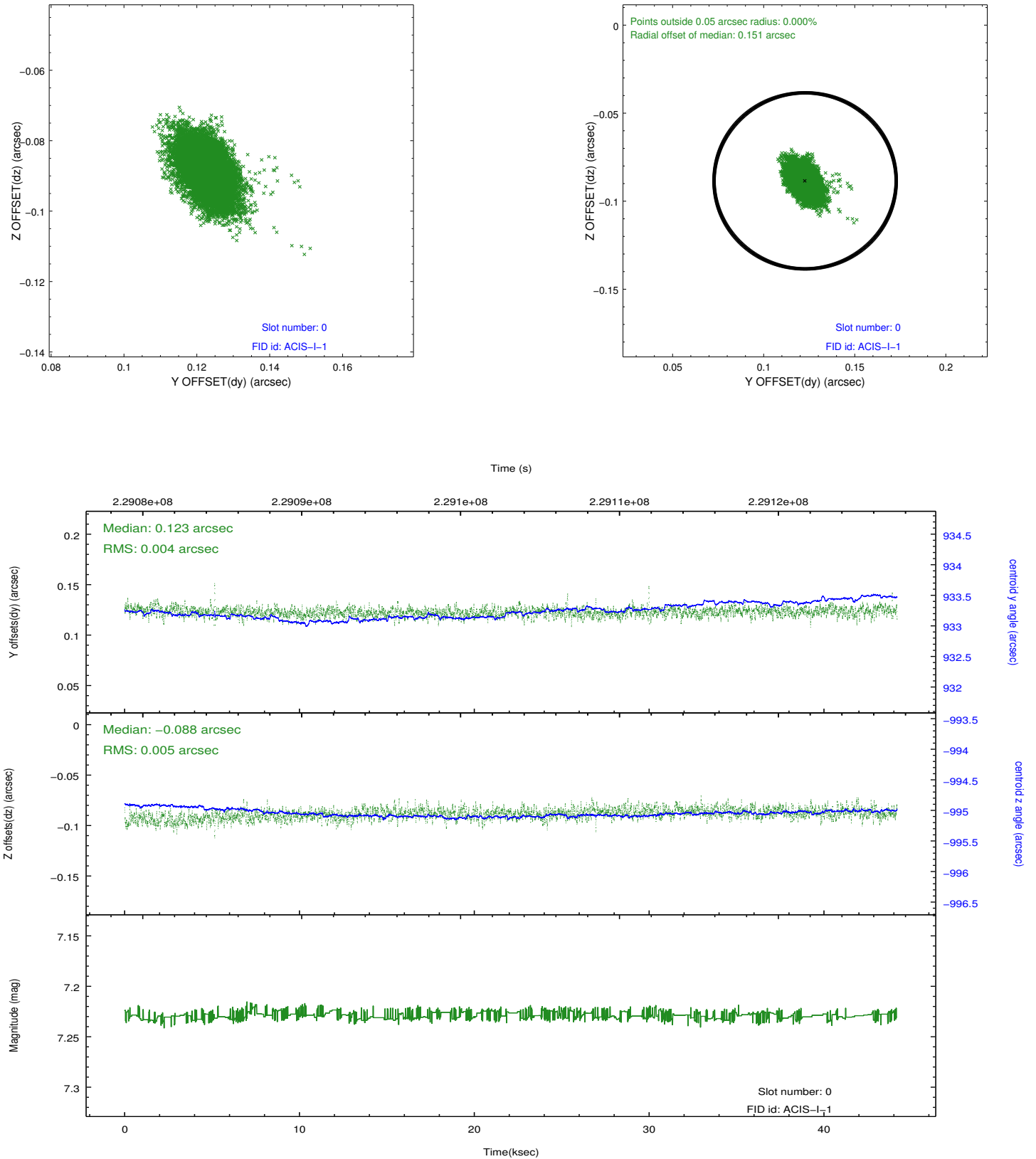


2.4.5 Slot 7

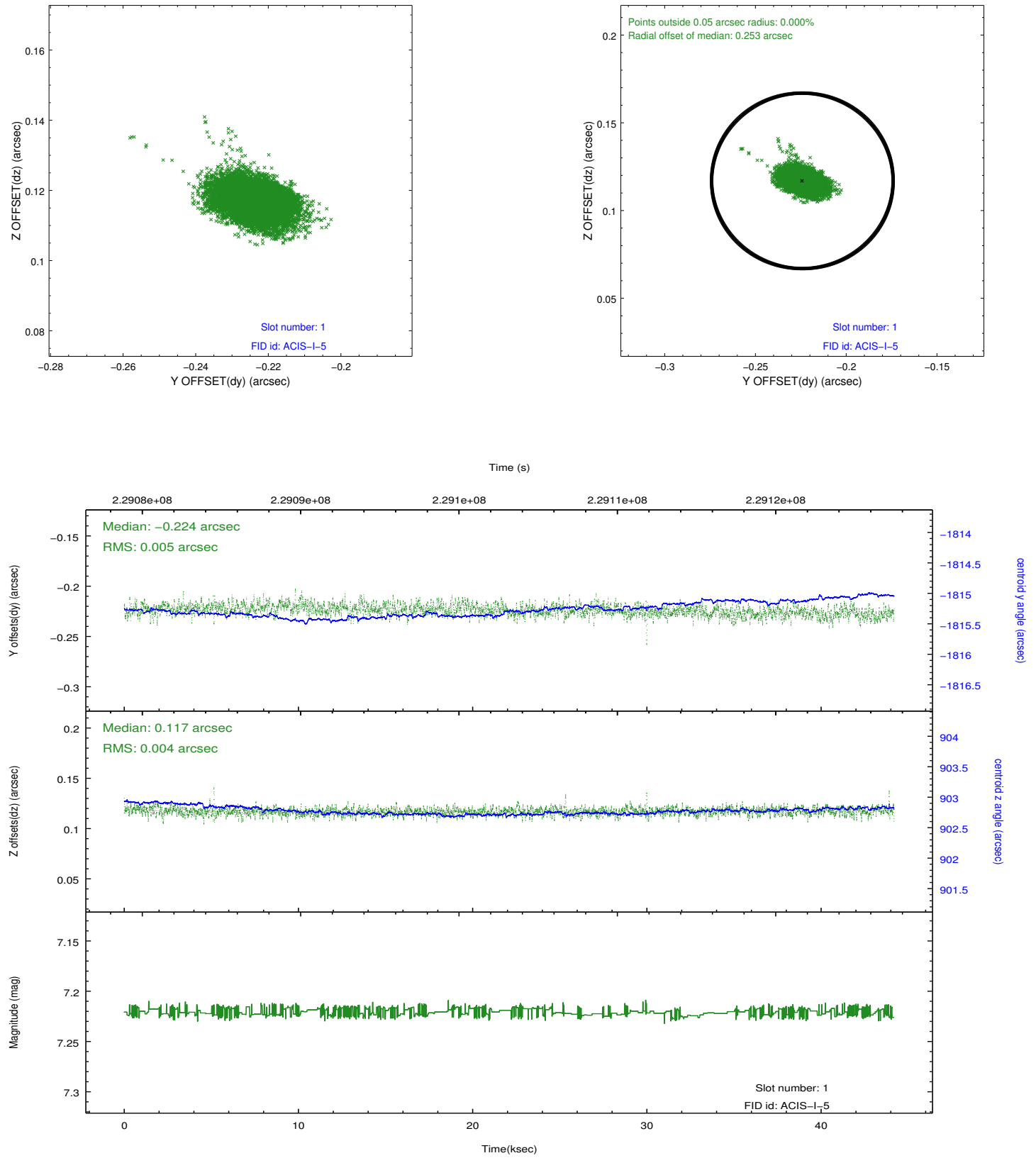


2.5 FID Slots

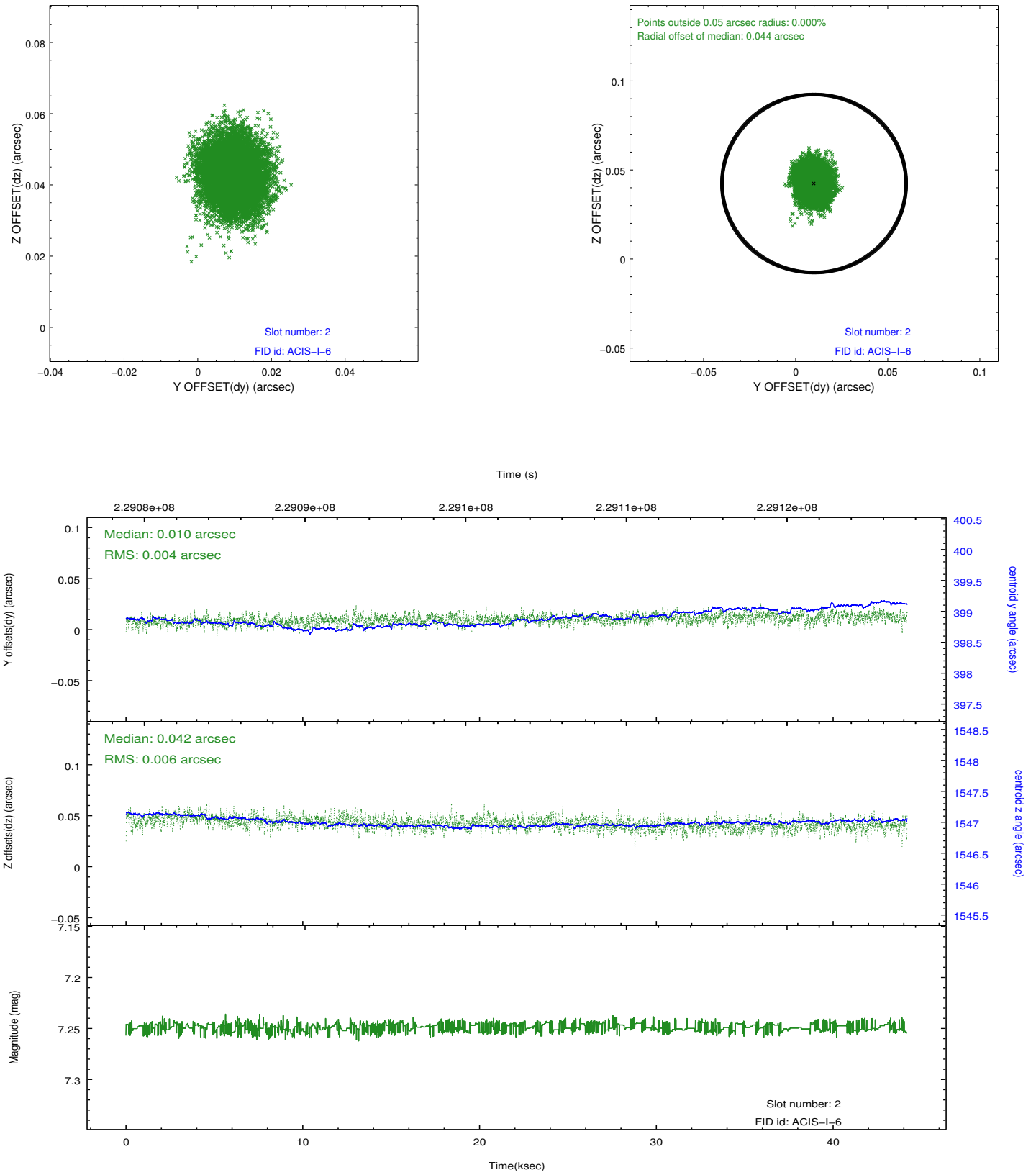
2.5.1 Slot 0



2.5.2 Slot 1



2.5.3 Slot 2



A Summary

A.1 Status

V&V Scientist	Jen Lauer
V&V Date (YYYY-MM-DD)	2013.01.15
V&V Edition	1
V&V Disposition and Status	OK
V&V Charge Time	44.17181

A.2 Comments