

V&V Reference Report

L2 ASCDS Version : 8.4.4

Observation 57394 - L2 Version 2
Chandra X-Ray Center

L2 Processing Date : May 28 2012

Contents

1	Front	2
2	OBI	3
2.1	OBI	3
2.1.1	Images	3
2.1.2	Bias	3
2.1.3	Parameters	4
2.1.4	Events	4
2.2	Compared Parameters	5
2.3	Star Slots	6
2.4	FID Slots	6
A	Summary	7
A.1	Status	7
A.2	Comments	7

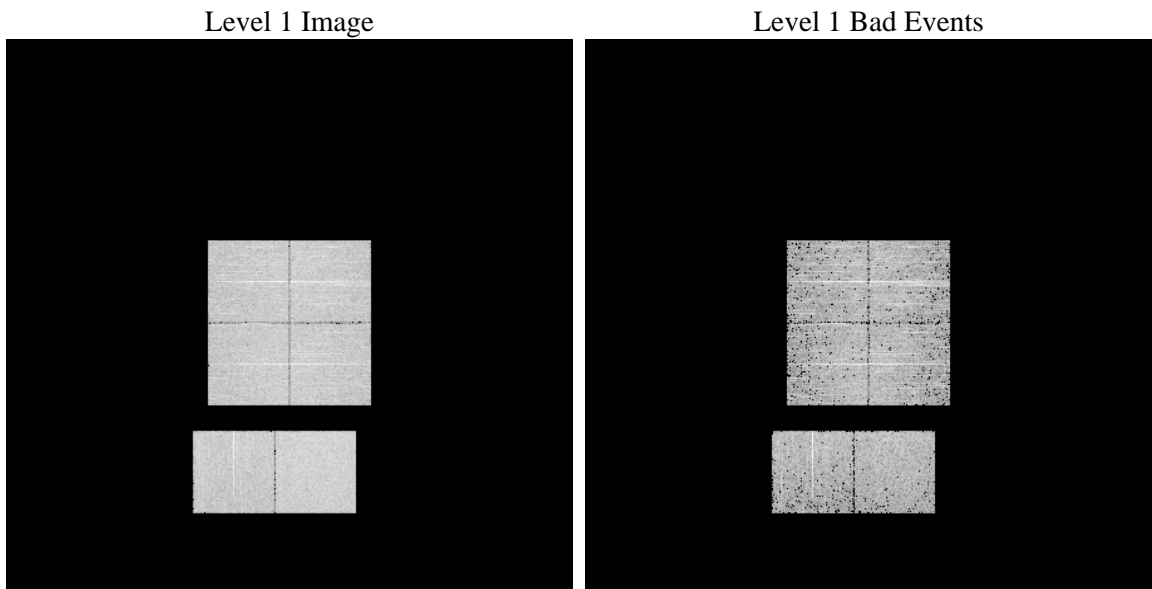
1 Front

seq_num	 	Sequence number
obs_id	57394	Observation id
title	ACIS-012367 diagnostics	Proposal title
observer	CHANDRA engineering request/realtime commanding	Principal investig
object	 	Source name
dtcycle	0	
cycle	P	events from which exps? Prim/Second/Both
ra_targ	0.0	Observer's specified target RA [deg]
dec_targ	0.0	Observer's specified target Dec [deg]
ra_nom	103.02795276877	Nominal RA [deg]
dec_nom	-0.99330541771625	Nominal Dec [deg]
roll_nom	340.52643540256	Nominal Roll [deg]
revision	2	Processing version of data
ontime	2793.5999896526	Sum of GTIs [s]
livetime	2758.2257444797	Livetime [s]
ontime0	2793.5999896526	Sum of GTIs [s]
ontime1	2790.3590293527	Sum of GTIs [s]
ontime2	2793.5999896526	Sum of GTIs [s]
ontime3	2792.9419404864	Sum of GTIs [s]
ontime6	2793.5999896526	Sum of GTIs [s]
ontime7	2793.5999896526	Sum of GTIs [s]
l2events	197537	Number of level 2 events

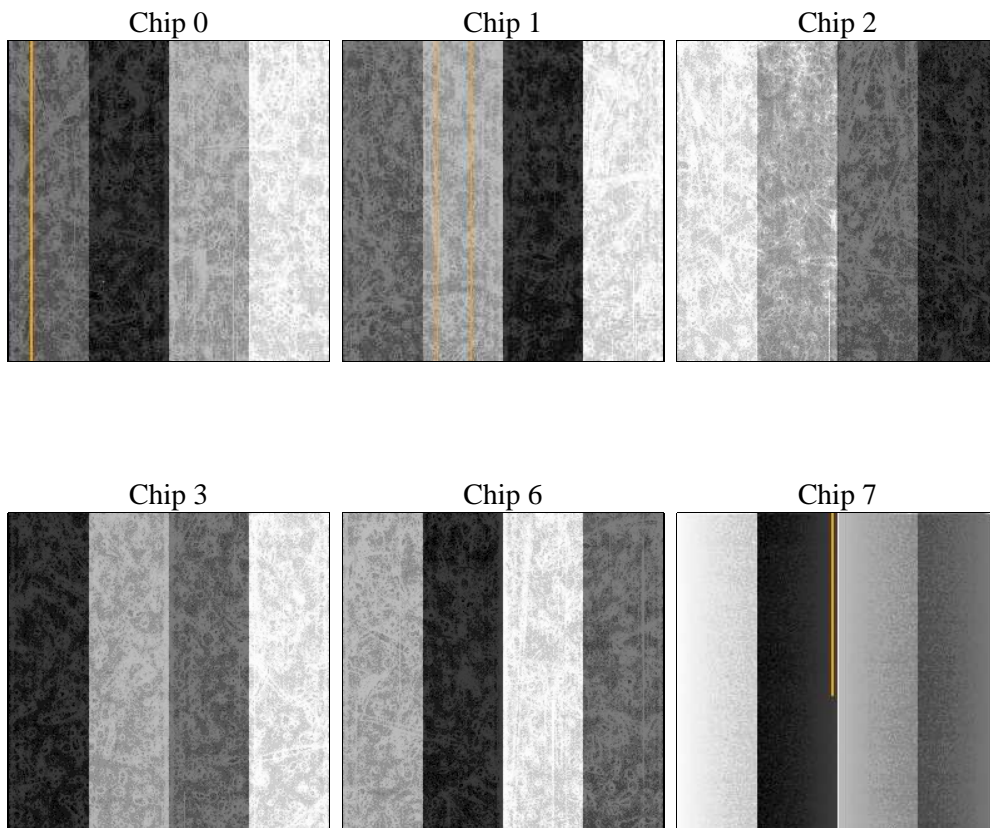
2 OBI

2.1 OBI

2.1.1 Images



2.1.2 Bias



2.1.3 Parameters

obi_num	0	Obi number	sched_exp_time	0.0	[s] Scheduled observation exposure time
ascdsver	8.4.4	Processing system revision	ontime	2793.5999896526	Sum of GTIs [s]
caldsver	4.4.9	 	ontime0	2793.5999896526	Sum of GTIs [s]
date	2012-05-28T16:08:59	Date and time of file creation	ontime1	2790.3590293527	Sum of GTIs [s]
revision	2	Processing version of data	ontime2	2793.5999896526	Sum of GTIs [s]
			ontime3	2792.9419404864	Sum of GTIs [s]
			ontime6	2793.5999896526	Sum of GTIs [s]
			ontime7	2793.5999896526	Sum of GTIs [s]
			l1events	356527	Number of level 1 events

2.1.4 Events

	ccd 0	ccd 1	ccd 2	ccd 3	ccd 6	ccd 7		ccd 0	ccd 1	ccd 2	ccd 3	ccd 6	ccd 7
level 1 events	56551	59063	57193	57858	57778	68084	grade 0 events	17003	16872	17406	17535	17632	9067
rejected events	24404	26304	24924	25388	23653	23313		30%	28%	30%	30%	30%	13%
rejected %	43%	44%	43%	43%	40%	34%	grade 1 events	136	125	147	161	105	66
								0%	0%	0%	0%	0%	0%
							grade 2 events	5793	6110	5541	5697	5939	9639
								10%	10%	9%	9%	10%	14%
							grade 3 events	2121	2156	2187	2157	2224	4121
								3%	3%	3%	3%	3%	6%
							grade 4 events	2024	2100	2171	2162	2149	4089
								3%	3%	3%	3%	3%	6%
							grade 5 events	1418	1511	1334	1439	1437	3844
								2%	2%	2%	2%	2%	5%
							grade 6 events	5243	5561	5005	4919	6222	17914
								9%	9%	8%	8%	10%	26%
							grade 7 events	22813	24628	23402	23788	22070	19344
								40%	41%	40%	41%	38%	28%

2.2 Compared Parameters

Parameter	Planned	Actual	Parameter	Planned	Actual
Instrument	ACIS	ACIS	Obspar format version number	7	7
Detector	ACIS-012367	ACIS-012367	Obspar file type	PREDICTED	ACTUAL
Grating	NONE	NONE	Obspar update status	NONE	UPDATED
Data mode	FAINT	FAINT	Number of optional ACIS chips dropped	0	0
Observation mode	SECONDARY	SECONDARY	On-chip summing requested	N	N
[deg] Pointing RA	0	103.027952768773	Subarray requested	NONE	NONE
[deg] Pointing Dec	0	-0.9933054177162471	Alternating exposures requested	N	N
[deg] Pointing Roll	0.0	340.5264354025553	[s] Primary exposure time	3.2	3.2
[mm] SIM focus pos	-1.429586	-0.6828225247311905			
[mm] SIM defocus	0.1037507710433287	0.8505141146731063			
[mm] SIM translation stage pos	250.455976	250.466033080201			
[mm] SIM translation stage offset	0	-0.01005468664627074			
[s] Observation start time (MET)	347948577.661907	347948576.63691			
Observation start date	2009-01-10T04:22:58	2009-01-10T04:22:56			
[s] Observation end time (MET)	347958159.362381	347958158.33738			
Observation end date	2009-01-10T07:02:39	2009-01-10T07:02:38			
Read mode	TIMED	TIMED			

2.3 Star Slots

2.4 FID Slots

A Summary

A.1 Status

V&V Scientist	Jen Lauer
V&V Date (YYYY-MM-DD)	2012.06.04
V&V Edition	1
V&V Disposition and Status	OK
V&V Charge Time	2.7935999896526

A.2 Comments