

V&V Reference Report

L2 ASCDS Version : 8.4.5

Observation 56644 - L2 Version 2
Chandra X-Ray Center

L2 Processing Date : Jun 18 2012

Contents

| | | |
|----------|-------------------------------|----------|
| 1 | Front | 2 |
| 2 | OBI | 3 |
| 2.1 | OBI | 3 |
| 2.1.1 | Images | 3 |
| 2.1.2 | Bias | 3 |
| 2.1.3 | Parameters | 4 |
| 2.1.4 | Events | 4 |
| 2.2 | Compared Parameters | 5 |
| 2.3 | Star Slots | 6 |
| 2.4 | FID Slots | 6 |
| A | Summary | 7 |
| A.1 | Status | 7 |
| A.2 | Comments | 7 |

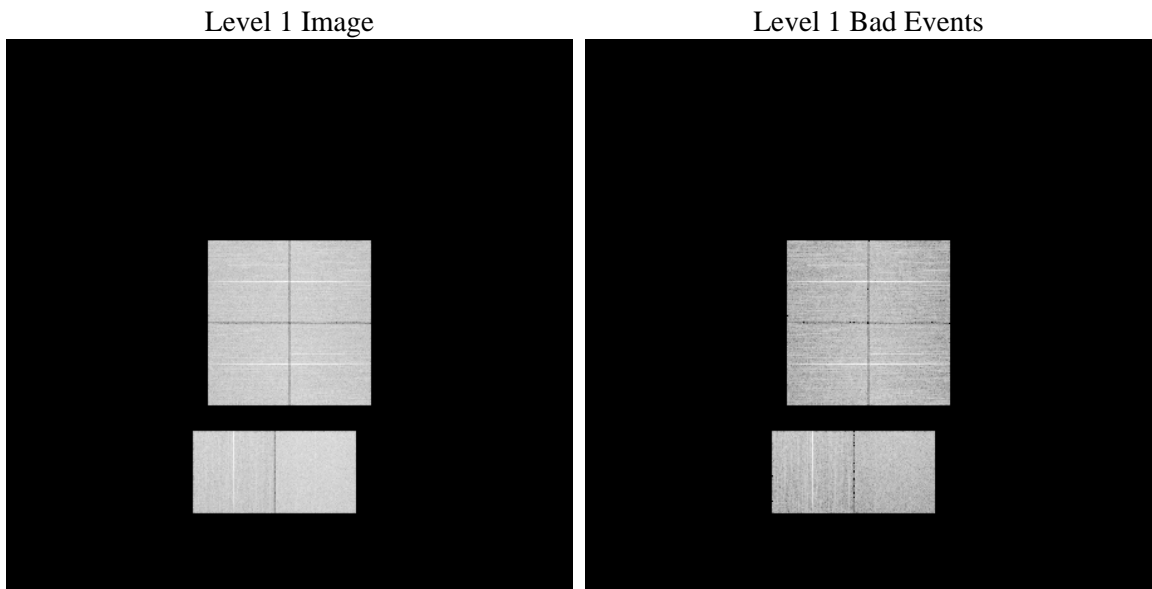
1 Front

| | | |
|----------|---|---|
| seq_num | | Sequence number |
| obs_id | 56644 | Observation id |
| title | ACIS-012367 diagnostics | Proposal title |
| observer | CHANDRA engineering request/realtime commanding | Principal investig |
| object | | Source name |
| dtcycle | 0 | |
| cycle | P | events from which exps? Prim/Second/Both |
| ra_targ | 0.0 | Observer's specified target RA [deg] |
| dec_targ | 0.0 | Observer's specified target Dec [deg] |
| ra_nom | 59.968298685367 | Nominal RA [deg] |
| dec_nom | 44.982085886008 | Nominal Dec [deg] |
| roll_nom | 185.63500249249 | Nominal Roll [deg] |
| revision | 2 | Processing version of data |
| ontime | 8242.8306092024 | Sum of GTIs [s] |
| livetime | 8138.4549247919 | Livetime [s] |
| ontime0 | 8142.3584089279 | Sum of GTIs [s] |
| ontime1 | 8145.5994092226 | Sum of GTIs [s] |
| ontime2 | 8139.1173291802 | Sum of GTIs [s] |
| ontime3 | 8142.3583692312 | Sum of GTIs [s] |
| ontime6 | 8139.1190057993 | Sum of GTIs [s] |
| ontime7 | 8242.8306092024 | Sum of GTIs [s] |
| l2events | 435502 | Number of level 2 events |

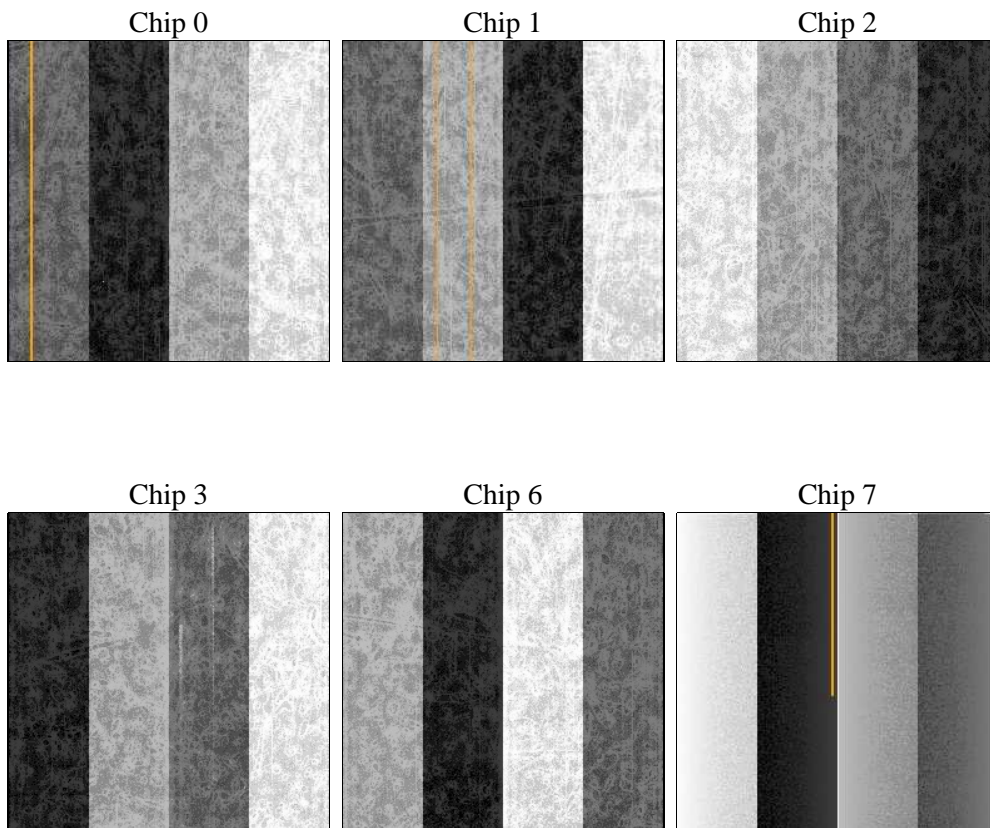
2 OBI

2.1 OBI

2.1.1 Images



2.1.2 Bias



2.1.3 Parameters

| | | | | | |
|----------|---------------------|--------------------------------|----------------|-----------------|---|
| obi_num | 1 | Obi number | sched_exp_time | 0.0 | [s] Scheduled observation exposure time |
| ascdsver | 8.4.5 | Processing system revision | ontime | 8242.8306092024 | Sum of GTIs [s] |
| caldsver | 4.4.10 | | ontime0 | 8142.3584089279 | Sum of GTIs [s] |
| date | 2012-06-17T06:46:01 | Date and time of file creation | ontime1 | 8145.5994092226 | Sum of GTIs [s] |
| revision | 2 | Processing version of data | ontime2 | 8139.1173291802 | Sum of GTIs [s] |
| | | | ontime3 | 8142.3583692312 | Sum of GTIs [s] |
| | | | ontime6 | 8139.1190057993 | Sum of GTIs [s] |
| | | | ontime7 | 8242.8306092024 | Sum of GTIs [s] |
| | | | l1events | 903854 | Number of level 1 events |

2.1.4 Events

| | ccd 0 | ccd 1 | ccd 2 | ccd 3 | ccd 6 | ccd 7 | | ccd 0 | ccd 1 | ccd 2 | ccd 3 | ccd 6 | ccd 7 |
|-----------------|--------|--------|--------|--------|--------|--------|----------------|-------|-------|-------|-------|-------|-------|
| level 1 events | 140171 | 141466 | 144013 | 148498 | 148256 | 181450 | grade 0 events | 37011 | 36542 | 38172 | 38060 | 37373 | 19672 |
| rejected events | 70453 | 71409 | 73512 | 78159 | 76249 | 72023 | | 26% | 25% | 26% | 25% | 25% | 10% |
| rejected % | 50% | 50% | 51% | 52% | 51% | 39% | grade 1 events | 292 | 234 | 299 | 307 | 255 | 157 |
| | | | | | | | | 0% | 0% | 0% | 0% | 0% | 0% |
| | | | | | | | grade 2 events | 12635 | 13311 | 12400 | 12379 | 12979 | 23559 |
| | | | | | | | | 9% | 9% | 8% | 8% | 8% | 12% |
| | | | | | | | grade 3 events | 4688 | 4738 | 4741 | 4731 | 4776 | 10121 |
| | | | | | | | | 3% | 3% | 3% | 3% | 3% | 5% |
| | | | | | | | grade 4 events | 4829 | 4636 | 4854 | 4873 | 4699 | 9977 |
| | | | | | | | | 3% | 3% | 3% | 3% | 3% | 5% |
| | | | | | | | grade 5 events | 4096 | 4208 | 3994 | 4533 | 4311 | 11759 |
| | | | | | | | | 2% | 2% | 2% | 3% | 2% | 6% |
| | | | | | | | grade 6 events | 10580 | 10864 | 10357 | 10330 | 12211 | 46141 |
| | | | | | | | | 7% | 7% | 7% | 6% | 8% | 25% |
| | | | | | | | grade 7 events | 66040 | 66933 | 69196 | 73285 | 71652 | 60064 |
| | | | | | | | | 47% | 47% | 48% | 49% | 48% | 33% |

2.2 Compared Parameters

| Parameter | Planned | Actual | Parameter | Planned | Actual |
|-----------------------------------|---------------------|----------------------|---------------------------------------|-----------|---------|
| Instrument | ACIS | ACIS | Obspar format version number | 7 | 7 |
| Detector | ACIS-012367 | ACIS-012367 | Obspar file type | PREDICTED | ACTUAL |
| Grating | NONE | NONE | Obspar update status | NONE | UPDATED |
| Data mode | FAINT | FAINT | Number of optional ACIS chips dropped | 0 | 0 |
| Observation mode | SECONDARY | SECONDARY | On-chip summing requested | N | N |
| [deg] Pointing RA | 0 | 59.96829868536708 | Subarray requested | NONE | NONE |
| [deg] Pointing Dec | 0 | 44.9820858860076 | Alternating exposures requested | N | N |
| [deg] Pointing Roll | 0.0 | 185.6350024924913 | [s] Primary exposure time | 3.2 | 3.2 |
| [mm] SIM focus pos | -1.429586 | -0.6828225247311905 | | | |
| [mm] SIM defocus | 0.1037507710433287 | 0.8505141146731063 | | | |
| [mm] SIM translation stage pos | 250.455976 | 250.466033080201 | | | |
| [mm] SIM translation stage offset | 0 | -0.01005468664627074 | | | |
| [s] Observation start time (MET) | 375635522.344911 | 375635521.31991 | | | |
| Observation start date | 2009-11-26T15:12:02 | 2009-11-26T15:12:01 | | | |
| [s] Observation end time (MET) | 375645776.445428 | 375645775.42042 | | | |
| Observation end date | 2009-11-26T18:02:56 | 2009-11-26T18:02:55 | | | |
| Read mode | TIMED | TIMED | | | |

2.3 Star Slots

2.4 FID Slots

A Summary

A.1 Status

| | |
|----------------------------|-----------------|
| V&V Scientist | Beth Sundheim |
| V&V Date (YYYY-MM-DD) | 2012.06.21 |
| V&V Edition | 1 |
| V&V Disposition and Status | OK |
| V&V Charge Time | 8.2428306092024 |

A.2 Comments