

V&V Reference Report

L2 ASCDS Version : 8.4.5

Observation 56594 - L2 Version 2
Chandra X-Ray Center

L2 Processing Date : Jun 18 2012

Contents

| | | |
|----------|-------------------------------|----------|
| 1 | Front | 2 |
| 2 | OBI | 3 |
| 2.1 | OBI | 3 |
| 2.1.1 | Images | 3 |
| 2.1.2 | Bias | 3 |
| 2.1.3 | Parameters | 4 |
| 2.1.4 | Events | 4 |
| 2.2 | Compared Parameters | 5 |
| 2.3 | Star Slots | 6 |
| 2.4 | FID Slots | 6 |
| A | Summary | 7 |
| A.1 | Status | 7 |
| A.2 | Comments | 7 |

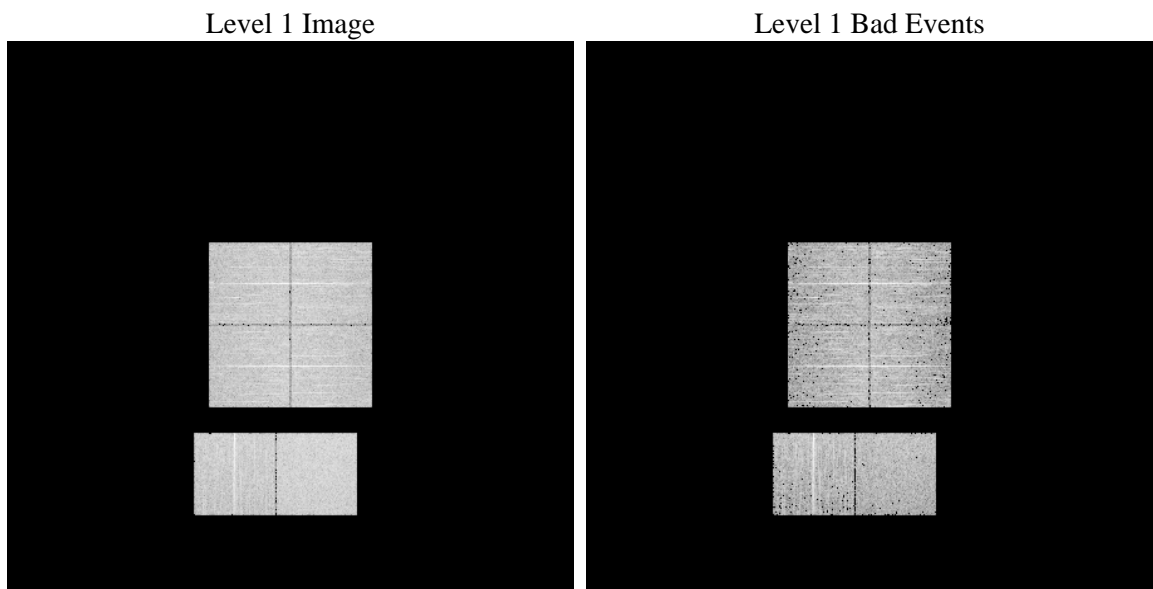
1 Front

| | | |
|----------|---|---|
| seq_num | | Sequence number |
| obs_id | 56594 | Observation id |
| title | ACIS-012367 diagnostics | Proposal title |
| observer | CHANDRA engineering request/realtime commanding | Principal investig |
| object | | Source name |
| dtcycle | 0 | |
| cycle | P | events from which exps? Prim/Second/Both |
| ra_targ | 0.0 | Observer's specified target RA [deg] |
| dec_targ | 0.0 | Observer's specified target Dec [deg] |
| ra_nom | 84.966734191334 | Nominal RA [deg] |
| dec_nom | -1.0077428888855 | Nominal Dec [deg] |
| roll_nom | 6.6908510135425 | Nominal Roll [deg] |
| revision | 2 | Processing version of data |
| ontime | 3272.1692200899 | Sum of GTIs [s] |
| livetime | 3230.7350431614 | Livetime [s] |
| ontime0 | 3272.2102402449 | Sum of GTIs [s] |
| ontime1 | 3273.5999878645 | Sum of GTIs [s] |
| ontime2 | 3273.5999878645 | Sum of GTIs [s] |
| ontime3 | 3272.1281602383 | Sum of GTIs [s] |
| ontime6 | 3273.5999878645 | Sum of GTIs [s] |
| ontime7 | 3272.1692200899 | Sum of GTIs [s] |
| l2events | 178922 | Number of level 2 events |

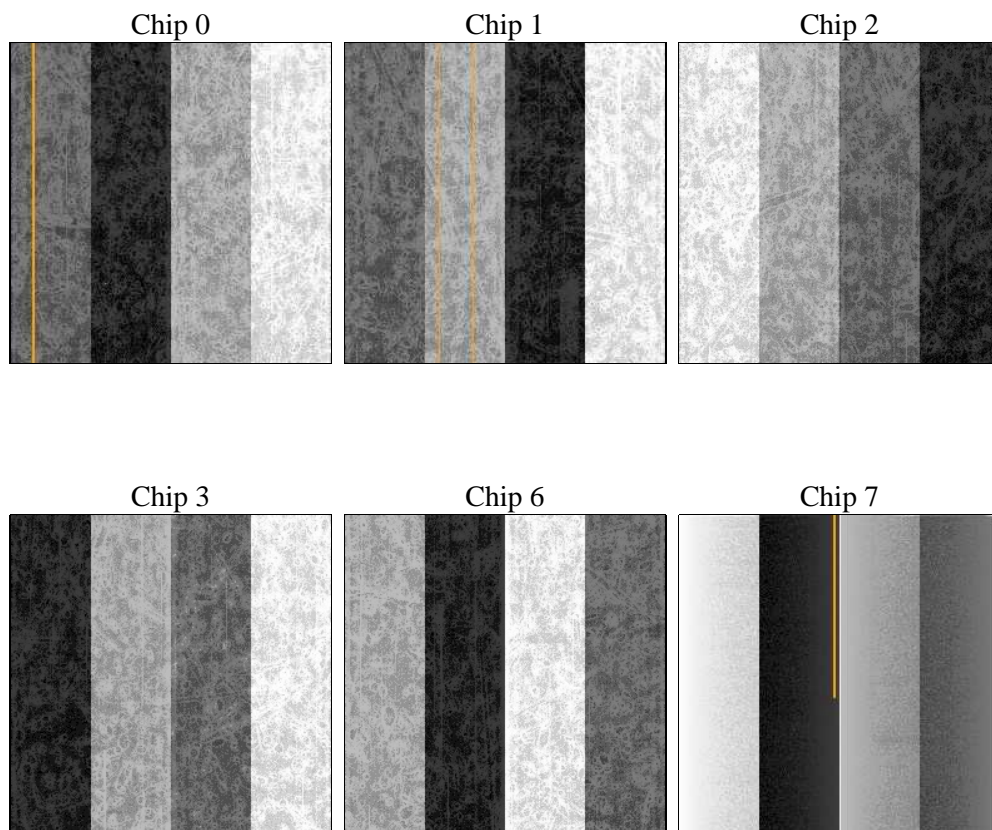
2 OBI

2.1 OBI

2.1.1 Images



2.1.2 Bias



2.1.3 Parameters

| | | | | | |
|----------|---------------------|--------------------------------|----------------|-----------------|---|
| obi_num | 0 | Obi number | sched_exp_time | 0.0 | [s] Scheduled observation exposure time |
| ascdsver | 8.4.5 | Processing system revision | ontime | 3272.1692200899 | Sum of GTIs [s] |
| caldsver | 4.4.10 | | ontime0 | 3272.2102402449 | Sum of GTIs [s] |
| date | 2012-06-18T07:16:24 | Date and time of file creation | ontime1 | 3273.5999878645 | Sum of GTIs [s] |
| revision | 2 | Processing version of data | ontime2 | 3273.5999878645 | Sum of GTIs [s] |
| | | | ontime3 | 3272.1281602383 | Sum of GTIs [s] |
| | | | ontime6 | 3273.5999878645 | Sum of GTIs [s] |
| | | | ontime7 | 3272.1692200899 | Sum of GTIs [s] |
| | | | l1events | 371149 | Number of level 1 events |

2.1.4 Events

| | ccd 0 | ccd 1 | ccd 2 | ccd 3 | ccd 6 | ccd 7 | | ccd 0 | ccd 1 | ccd 2 | ccd 3 | ccd 6 | ccd 7 |
|-----------------|-------|-------|-------|-------|-------|-------|----------------|-------|-------|-------|-------|-------|-------|
| level 1 events | 58242 | 58872 | 58364 | 60094 | 62286 | 73291 | grade 0 events | 15095 | 14842 | 15322 | 15504 | 15623 | 8148 |
| rejected events | 29657 | 30152 | 29919 | 31270 | 32252 | 28919 | | 25% | 25% | 26% | 25% | 25% | 11% |
| rejected % | 50% | 51% | 51% | 52% | 51% | 39% | grade 1 events | 119 | 122 | 127 | 120 | 104 | 62 |
| | | | | | | | | 0% | 0% | 0% | 0% | 0% | 0% |
| | | | | | | | grade 2 events | 5255 | 5512 | 4922 | 5095 | 5388 | 9549 |
| | | | | | | | | 9% | 9% | 8% | 8% | 8% | 13% |
| | | | | | | | grade 3 events | 1941 | 1925 | 1940 | 2013 | 2023 | 4044 |
| | | | | | | | | 3% | 3% | 3% | 3% | 3% | 5% |
| | | | | | | | grade 4 events | 1900 | 1868 | 1976 | 1925 | 1883 | 4019 |
| | | | | | | | | 3% | 3% | 3% | 3% | 3% | 5% |
| | | | | | | | grade 5 events | 1618 | 1767 | 1588 | 1883 | 1842 | 4620 |
| | | | | | | | | 2% | 3% | 2% | 3% | 2% | 6% |
| | | | | | | | grade 6 events | 4394 | 4602 | 4306 | 4287 | 5141 | 18612 |
| | | | | | | | | 7% | 7% | 7% | 7% | 8% | 25% |
| | | | | | | | grade 7 events | 27920 | 28234 | 28183 | 29267 | 30282 | 24237 |
| | | | | | | | | 47% | 47% | 48% | 48% | 48% | 33% |

2.2 Compared Parameters

| Parameter | Planned | Actual | Parameter | Planned | Actual |
|-----------------------------------|---------------------|----------------------|---------------------------------------|-----------|---------|
| Instrument | ACIS | ACIS | Obspar format version number | 7 | 7 |
| Detector | ACIS-012367 | ACIS-012367 | Obspar file type | PREDICTED | ACTUAL |
| Grating | NONE | NONE | Obspar update status | NONE | UPDATED |
| Data mode | FAINT | FAINT | Number of optional ACIS chips dropped | 0 | 0 |
| Observation mode | SECONDARY | SECONDARY | On-chip summing requested | N | N |
| [deg] Pointing RA | 0 | 84.96673419133361 | Subarray requested | NONE | NONE |
| [deg] Pointing Dec | 0 | -1.007742888885499 | Alternating exposures requested | N | N |
| [deg] Pointing Roll | 0.0 | 6.690851013542452 | [s] Primary exposure time | 3.2 | 3.2 |
| [mm] SIM focus pos | -1.429586 | -0.6828225247311905 | | | |
| [mm] SIM defocus | 0.1037507710433287 | 0.8505141146731063 | | | |
| [mm] SIM translation stage pos | 250.455976 | 250.466033080201 | | | |
| [mm] SIM translation stage offset | 0 | -0.01005468664627074 | | | |
| [s] Observation start time (MET) | 377196365.773621 | 377196364.74866 | | | |
| Observation start date | 2009-12-14T16:46:06 | 2009-12-14T16:46:04 | | | |
| [s] Observation end time (MET) | 377201328.823872 | 377201327.79891 | | | |
| Observation end date | 2009-12-14T18:08:49 | 2009-12-14T18:08:47 | | | |
| Read mode | TIMED | TIMED | | | |

2.3 Star Slots

2.4 FID Slots

A Summary

A.1 Status

| | |
|----------------------------|-----------------|
| V&V Scientist | Beth Sundheim |
| V&V Date (YYYY-MM-DD) | 2012.06.21 |
| V&V Edition | 1 |
| V&V Disposition and Status | OK |
| V&V Charge Time | 3.2721692200899 |

A.2 Comments