

V&V Reference Report

L2 ASCDS Version : 8.4.5

Observation 56534 - L2 Version 2
Chandra X-Ray Center

L2 Processing Date : Jun 19 2012

Contents

1	Front	2
2	OBI	3
2.1	OBI	3
2.1.1	Images	3
2.1.2	Bias	3
2.1.3	Parameters	4
2.1.4	Events	4
2.2	Compared Parameters	5
2.3	Star Slots	6
2.4	FID Slots	6
A	Summary	7
A.1	Status	7
A.2	Comments	7

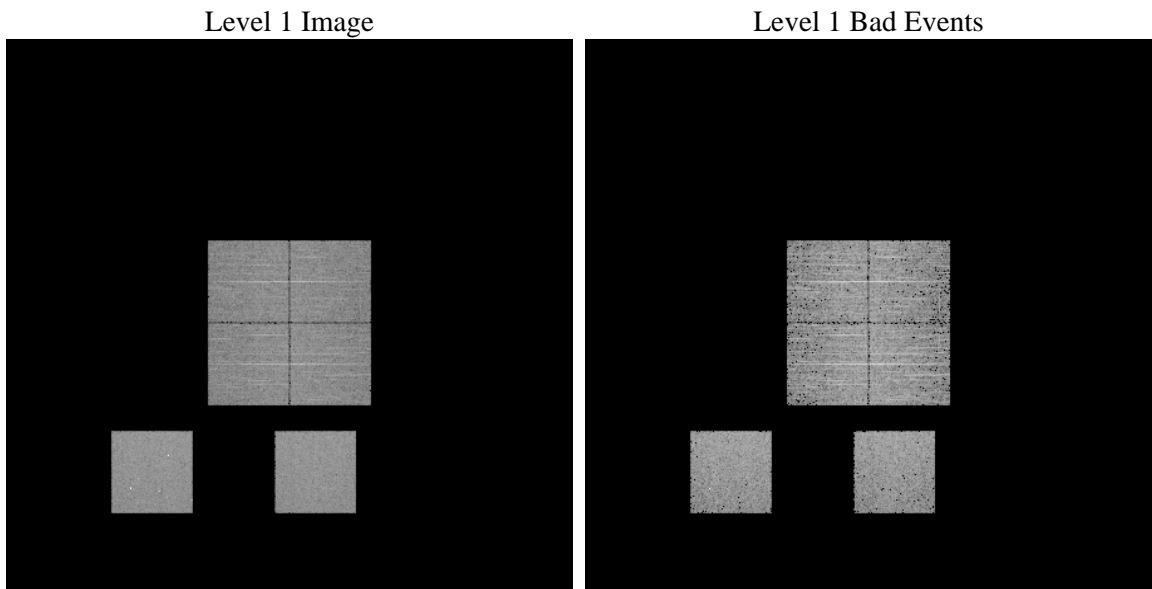
1 Front

seq_num	 	Sequence number
obs_id	56534	Observation id
title	ACIS-012357 diagnostics	Proposal title
observer	CHANDRA engineering request/realtime commanding	Principal investig
object	 	Source name
dtcycle	0	
cycle	P	events from which exps? Prim/Second/Both
ra_targ	0.0	Observer's specified target RA [deg]
dec_targ	0.0	Observer's specified target Dec [deg]
ra_nom	92.008151455912	Nominal RA [deg]
dec_nom	4.973434886063	Nominal Dec [deg]
roll_nom	314.23511460325	Nominal Roll [deg]
revision	2	Processing version of data
ontime	3276.3721452951	Sum of GTIs [s]
livetime	3234.884748397	Livetime [s]
ontime0	3276.3311052918	Sum of GTIs [s]
ontime1	3276.2900652885	Sum of GTIs [s]
ontime2	3276.2490252852	Sum of GTIs [s]
ontime3	3276.4131852984	Sum of GTIs [s]
ontime5	3276.2079852819	Sum of GTIs [s]
ontime7	3276.3721452951	Sum of GTIs [s]
l2events	186753	Number of level 2 events

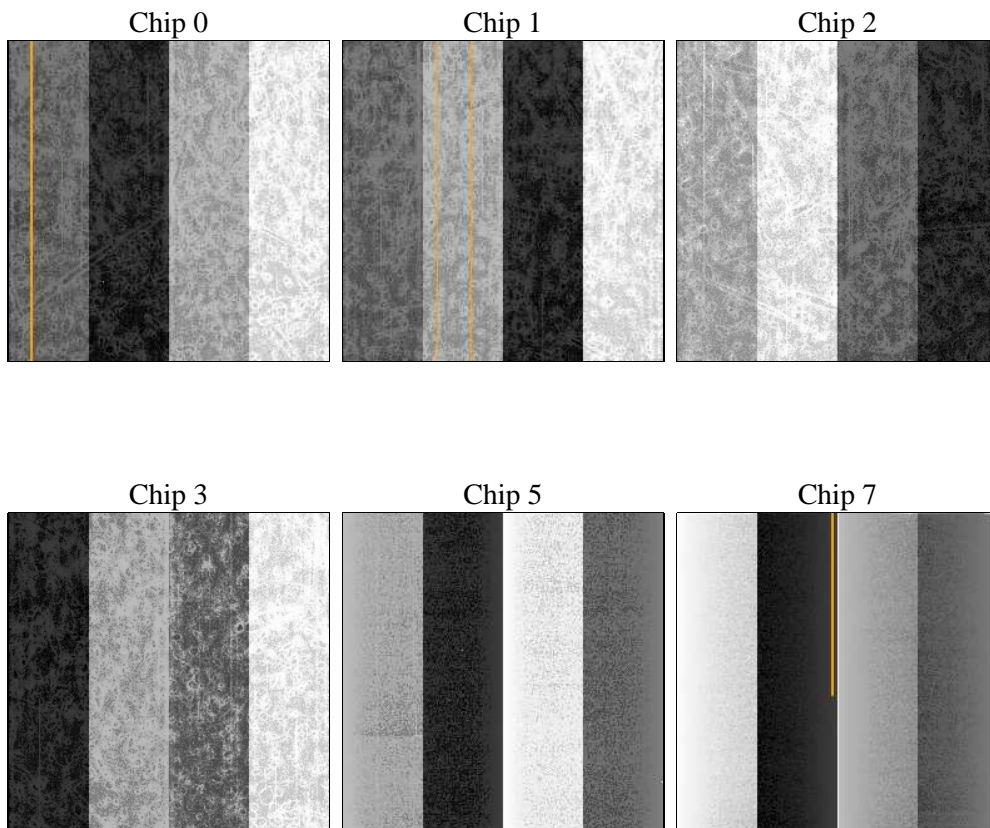
2 OBI

2.1 OBI

2.1.1 Images



2.1.2 Bias



2.1.3 Parameters

obi_num	0	Obi number	sched_exp_time	0.0	[s] Scheduled observation exposure time
ascdsver	8.4.5	Processing system revision	ontime	3276.3721452951	Sum of GTIs [s]
caldsver	4.4.10	 	ontime0	3276.3311052918	Sum of GTIs [s]
date	2012-06-19T10:18:18	Date and time of file creation	ontime1	3276.2900652885	Sum of GTIs [s]
revision	2	Processing version of data	ontime2	3276.2490252852	Sum of GTIs [s]
			ontime3	3276.4131852984	Sum of GTIs [s]
			ontime5	3276.2079852819	Sum of GTIs [s]
			ontime7	3276.3721452951	Sum of GTIs [s]
			l1events	375219	Number of level 1 events

2.1.4 Events

	ccd 0	ccd 1	ccd 2	ccd 3	ccd 5	ccd 7		ccd 0	ccd 1	ccd 2	ccd 3	ccd 5	ccd 7
level 1 events	55884	54741	58342	59222	75181	71849	grade 0 events	14233	14156	14737	14865	7114	7566
rejected events	28720	27537	30965	31771	29879	28738		25%	25%	25%	25%	9%	10%
rejected %	51%	50%	53%	53%	39%	39%	grade 1 events	125	90	121	128	103	72
								0%	0%	0%	0%	0%	0%
							grade 2 events	5042	5142	4812	4821	15748	9367
								9%	9%	8%	8%	20%	13%
							grade 3 events	1899	1857	1862	1931	2066	4083
								3%	3%	3%	3%	2%	5%
							grade 4 events	1782	1808	1870	1864	2104	3965
								3%	3%	3%	3%	2%	5%
							grade 5 events	1670	1667	1609	1858	4223	4572
								2%	3%	2%	3%	5%	6%
							grade 6 events	4208	4241	4096	3970	18270	18130
								7%	7%	7%	6%	24%	25%
							grade 7 events	26925	25780	29235	29785	25553	24094
								48%	47%	50%	50%	33%	33%

2.2 Compared Parameters

Parameter	Planned	Actual	Parameter	Planned	Actual
Instrument	ACIS	ACIS	Obspar format version number	7	7
Detector	ACIS-012357	ACIS-012357	Obspar file type	PREDICTED	ACTUAL
Grating	NONE	NONE	Obspar update status	NONE	UPDATED
Data mode	FAINT	FAINT	Number of optional ACIS chips dropped	0	0
Observation mode	SECONDARY	SECONDARY	On-chip summing requested	N	N
[deg] Pointing RA	0	92.00815145591231	Subarray requested	NONE	NONE
[deg] Pointing Dec	0	4.973434886062995	Alternating exposures requested	N	N
[deg] Pointing Roll	0.0	314.235114603251	[s] Primary exposure time	3.2	3.2
[mm] SIM focus pos	-1.429586	-0.6828225247311905			
[mm] SIM defocus	0.1037507710433287	0.8505141146731063			
[mm] SIM translation stage pos	250.455976	250.466033080201			
[mm] SIM translation stage offset	0	-0.01005468664627074			
[s] Observation start time (MET)	379481213.889151	379481212.86414			
Observation start date	2010-01-10T03:26:54	2010-01-10T03:26:52			
[s] Observation end time (MET)	379487093.289448	379487092.26444			
Observation end date	2010-01-10T05:04:53	2010-01-10T05:04:52			
Read mode	TIMED	TIMED			

2.3 Star Slots

2.4 FID Slots

A Summary

A.1 Status

V&V Scientist	Jen Lauer
V&V Date (YYYY-MM-DD)	2012.06.25
V&V Edition	1
V&V Disposition and Status	OK
V&V Charge Time	3.2763721452951

A.2 Comments