

V&V Reference Report

L2 ASCDS Version : 8.4.5

Observation 56484 - L2 Version 2
Chandra X-Ray Center

L2 Processing Date : Jun 20 2012

Contents

1	Front	2
2	OBI	3
2.1	OBI	3
2.1.1	Images	3
2.1.2	Bias	3
2.1.3	Parameters	4
2.1.4	Events	4
2.2	Compared Parameters	5
2.3	Star Slots	6
2.4	FID Slots	6
A	Summary	7
A.1	Status	7
A.2	Comments	7

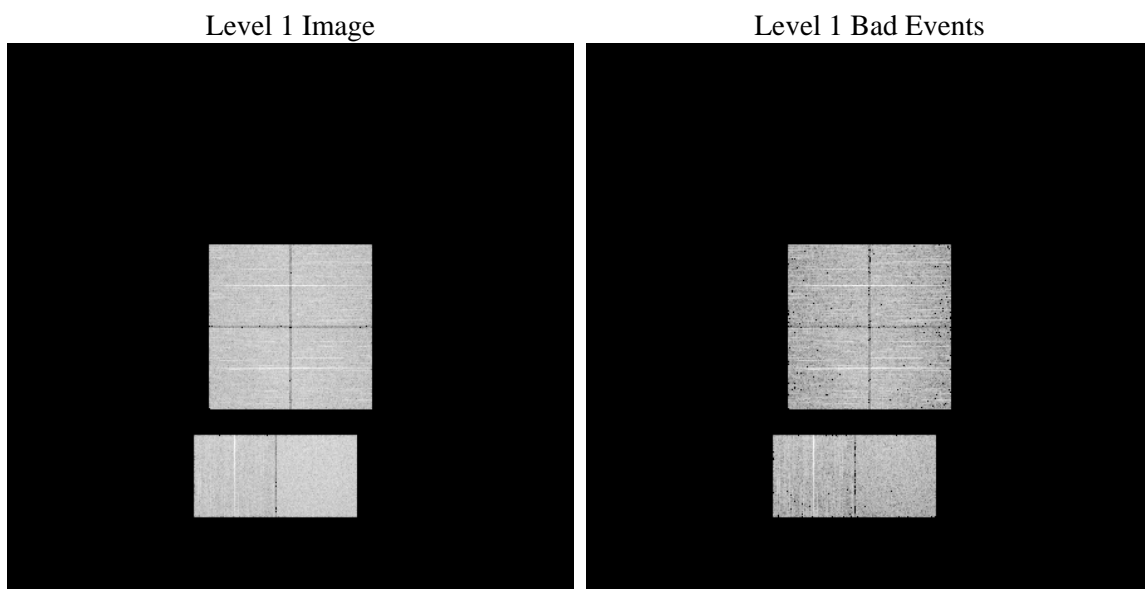
1 Front

seq_num	 	Sequence number
obs_id	56484	Observation id
title	ACIS-012367 diagnostics	Proposal title
observer	CHANDRA engineering request/realtime commanding	Principal investig
object	 	Source name
dtcycle	0	
cycle	P	events from which exps? Prim/Second/Both
ra_targ	0.0	Observer's specified target RA [deg]
dec_targ	0.0	Observer's specified target Dec [deg]
ra_nom	129.96546801084	Nominal RA [deg]
dec_nom	43.985708085067	Nominal Dec [deg]
roll_nom	176.97627649831	Nominal Roll [deg]
revision	2	Processing version of data
ontime	3945.5999853611	Sum of GTIs [s]
livetime	3895.6384225914	Livetime [s]
ontime0	3945.5999853611	Sum of GTIs [s]
ontime1	3945.5999853611	Sum of GTIs [s]
ontime2	3945.5999853611	Sum of GTIs [s]
ontime3	3945.5999853611	Sum of GTIs [s]
ontime6	3945.5999853611	Sum of GTIs [s]
ontime7	3945.5999853611	Sum of GTIs [s]
l2events	201788	Number of level 2 events

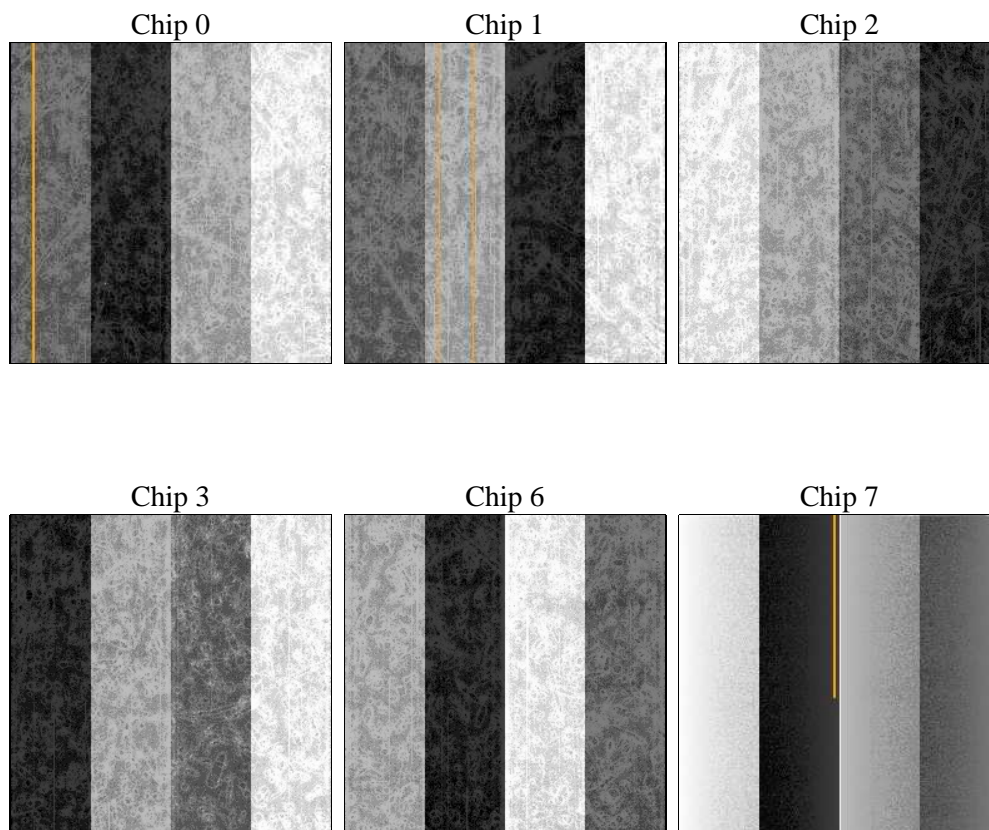
2 OBI

2.1 OBI

2.1.1 Images



2.1.2 Bias



2.1.3 Parameters

obi_num	0	Obi number	sched_exp_time	0.0	[s] Scheduled observation exposure time
ascdsver	8.4.5	Processing system revision	ontime	3945.5999853611	Sum of GTIs [s]
caldsver	4.4.10	 	ontime0	3945.5999853611	Sum of GTIs [s]
date	2012-06-20T13:19:01	Date and time of file creation	ontime1	3945.5999853611	Sum of GTIs [s]
revision	2	Processing version of data	ontime2	3945.5999853611	Sum of GTIs [s]
			ontime3	3945.5999853611	Sum of GTIs [s]
			ontime6	3945.5999853611	Sum of GTIs [s]
			ontime7	3945.5999853611	Sum of GTIs [s]
			l1events	433787	Number of level 1 events

2.1.4 Events

	ccd 0	ccd 1	ccd 2	ccd 3	ccd 6	ccd 7		ccd 0	ccd 1	ccd 2	ccd 3	ccd 6	ccd 7
level 1 events	67356	68696	70035	69963	71017	86720	grade 0 events	17266	17105	17711	17905	17493	9035
rejected events	35316	36147	37732	37438	37661	35933		25%	24%	25%	25%	24%	10%
rejected %	52%	52%	53%	53%	53%	41%	grade 1 events	127	126	141	154	121	71
								0%	0%	0%	0%	0%	0%
							grade 2 events	5932	6387	5809	5816	6093	11133
								8%	9%	8%	8%	8%	12%
							grade 3 events	2249	2185	2180	2267	2301	4788
								3%	3%	3%	3%	3%	5%
							grade 4 events	2242	2224	2296	2333	2240	4572
								3%	3%	3%	3%	3%	5%
							grade 5 events	2088	2105	2013	2185	2057	5498
								3%	3%	2%	3%	2%	6%
							grade 6 events	4867	5181	4839	4711	5756	22100
								7%	7%	6%	6%	8%	25%
							grade 7 events	32585	33383	35046	34592	34956	29523
								48%	48%	50%	49%	49%	34%

2.2 Compared Parameters

Parameter	Planned	Actual	Parameter	Planned	Actual
Instrument	ACIS	ACIS	Obspar format version number	7	7
Detector	ACIS-012367	ACIS-012367	Obspar file type	PREDICTED	ACTUAL
Grating	NONE	NONE	Obspar update status	NONE	UPDATED
Data mode	FAINT	FAINT	Number of optional ACIS chips dropped	0	0
Observation mode	SECONDARY	SECONDARY	On-chip summing requested	N	N
[deg] Pointing RA	0	129.9654680108399	Subarray requested	NONE	NONE
[deg] Pointing Dec	0	43.98570808506697	Alternating exposures requested	N	N
[deg] Pointing Roll	0.0	176.9762764983141	[s] Primary exposure time	3.2	3.2
[mm] SIM focus pos	-1.429586	-0.7809083437167272			
[mm] SIM defocus	0.1037507710433287	0.7524282956875696			
[mm] SIM translation stage pos	250.455976	250.466033080201			
[mm] SIM translation stage offset	0	-0.01005468664627074			
[s] Observation start time (MET)	380888061.310353	380888060.28535			
Observation start date	2010-01-26T10:14:21	2010-01-26T10:14:20			
[s] Observation end time (MET)	380895547.910727	380895546.88573			
Observation end date	2010-01-26T12:19:08	2010-01-26T12:19:06			
Read mode	TIMED	TIMED			

2.3 Star Slots

2.4 FID Slots

A Summary

A.1 Status

V&V Scientist	Jen Lauer
V&V Date (YYYY-MM-DD)	2012.06.26
V&V Edition	1
V&V Disposition and Status	OK
V&V Charge Time	3.9455999853611

A.2 Comments