

# V&V Reference Report

## L2 ASCDS Version : 8.5.1

Observation 5624 - L2 Version 3  
Chandra X-Ray Center

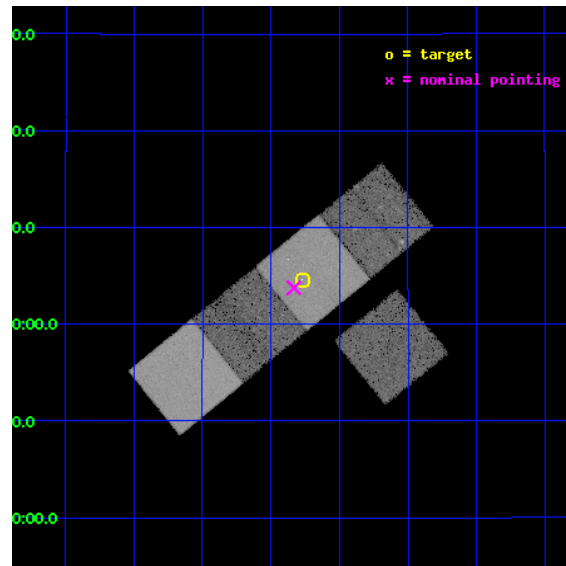
L2 Processing Date : Dec 16 2012

## Contents

<b>1</b>	<b>Front</b>	<b>2</b>
<b>2</b>	<b>OBI</b>	<b>3</b>
2.1	OBI . . . . .	3
2.1.1	Images . . . . .	3
2.1.2	Bias . . . . .	3
2.1.3	Parameters . . . . .	4
2.1.4	Events . . . . .	4
2.2	Compared Parameters . . . . .	5
2.3	Aspect . . . . .	6
2.4	Star Slots . . . . .	9
2.4.1	Slot 3 . . . . .	9
2.4.2	Slot 4 . . . . .	10
2.4.3	Slot 5 . . . . .	11
2.4.4	Slot 6 . . . . .	12
2.4.5	Slot 7 . . . . .	13
2.5	FID Slots . . . . .	14
2.5.1	Slot 0 . . . . .	14
2.5.2	Slot 1 . . . . .	15
2.5.3	Slot 2 . . . . .	16
<b>A</b>	<b>Summary</b>	<b>17</b>
A.1	Status . . . . .	17
A.2	Comments . . . . .	17

# 1 Front

seq_num	701047	Sequence number
obs_id	5624	Observation id
title	Extended inverse Compton emission from distant powerful radio galaxies	Proposal title
observer	Professor Andrew Fabian	Principal investigator
object	3C 432	Source name
dtcycle	0	&#160
cycle	P	events from which exps? Prim/Second/Both
ra_targ	320.6925	Observer's specified target RA [deg]
dec_targ	17.077222	Observer's specified target Dec [deg]
ra_nom	320.70817145769	Nominal RA [deg]
dec_nom	17.062834397179	Nominal Dec [deg]
roll_nom	320.91194188451	Nominal Roll [deg]
revision	3	Processing version of data
ontime	20038.399961442	Sum of GTIs [s]
livetime	19776.58351389	Livetime [s]
ontime3	20035.137186378	Sum of GTIs [s]
ontime5	20038.360256553	Sum of GTIs [s]
ontime6	20035.178246319	Sum of GTIs [s]
ontime7	20038.399961442	Sum of GTIs [s]
ontime8	20028.814225882	Sum of GTIs [s]
l2events	218636	Number of level 2 events

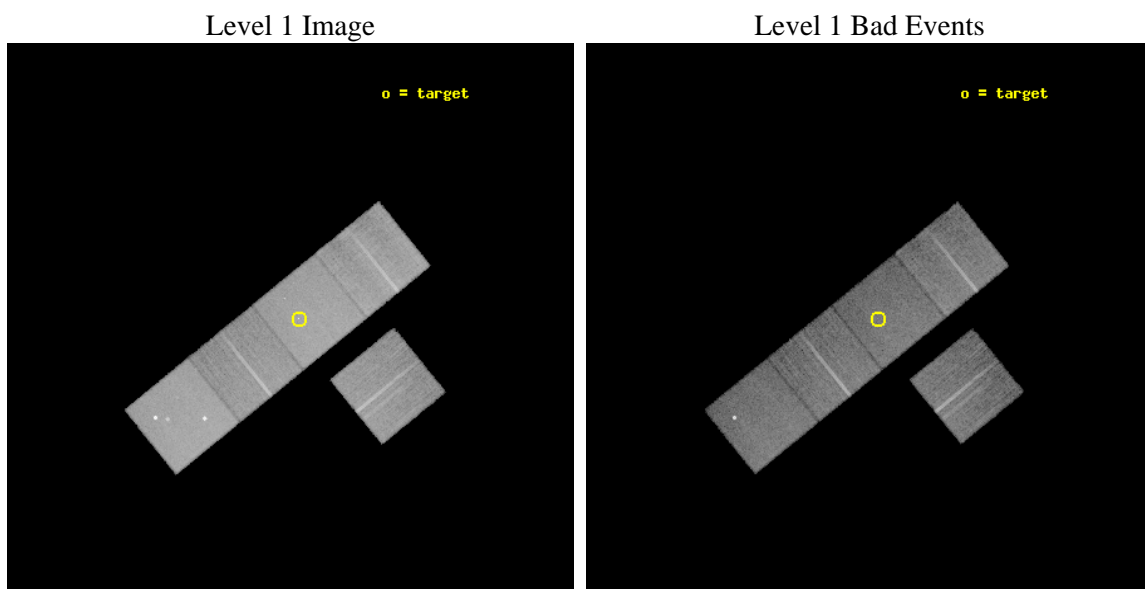




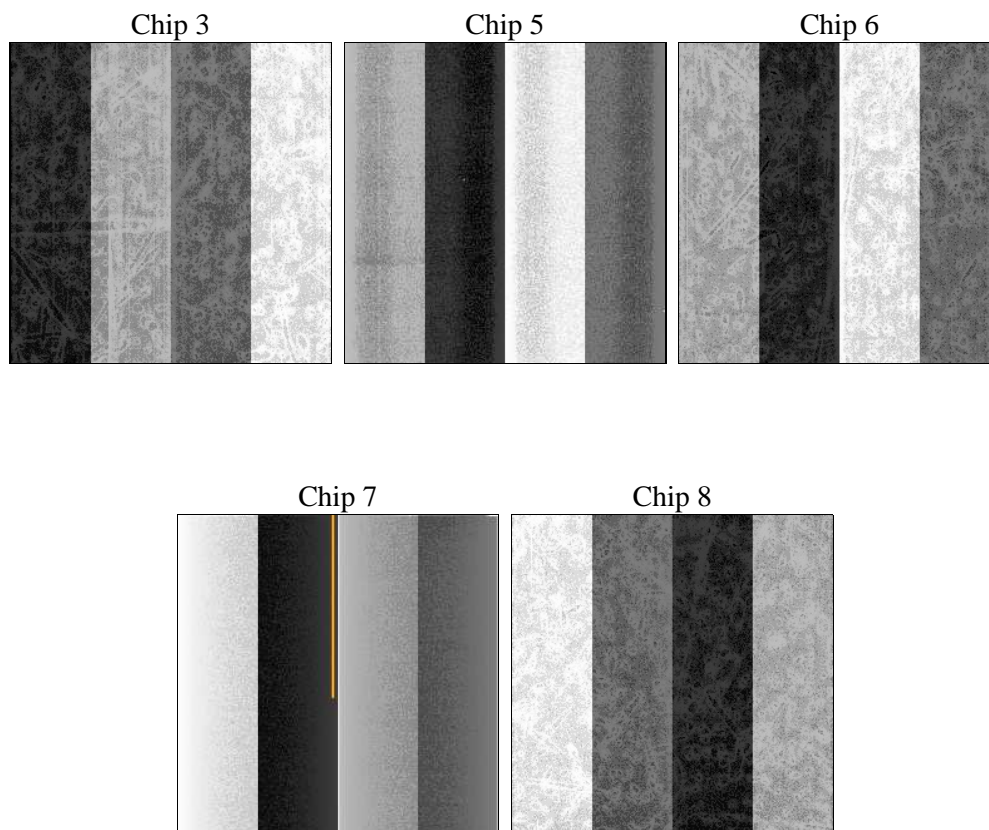
## 2 OBI

### 2.1 OBI

#### 2.1.1 Images



#### 2.1.2 Bias



### 2.1.3 Parameters

obi_num	0	Obi number	sched_exp_time	20000.000000	[s] Scheduled observation exposure time
ascdsver	8.5.1	Processing system revision	ontime	20038.399961442	Sum of GTIs [s]
caldsver	4.5.5	&#160	ontime3	20035.137186378	Sum of GTIs [s]
date	2012-12-15T21:23:54	Date and time of file creation	ontime5	20038.360256553	Sum of GTIs [s]
revision	3	Processing version of data	ontime6	20035.178246319	Sum of GTIs [s]
			ontime7	20038.399961442	Sum of GTIs [s]
			ontime8	20028.814225882	Sum of GTIs [s]
			l1events	864796	Number of level 1 events

### 2.1.4 Events

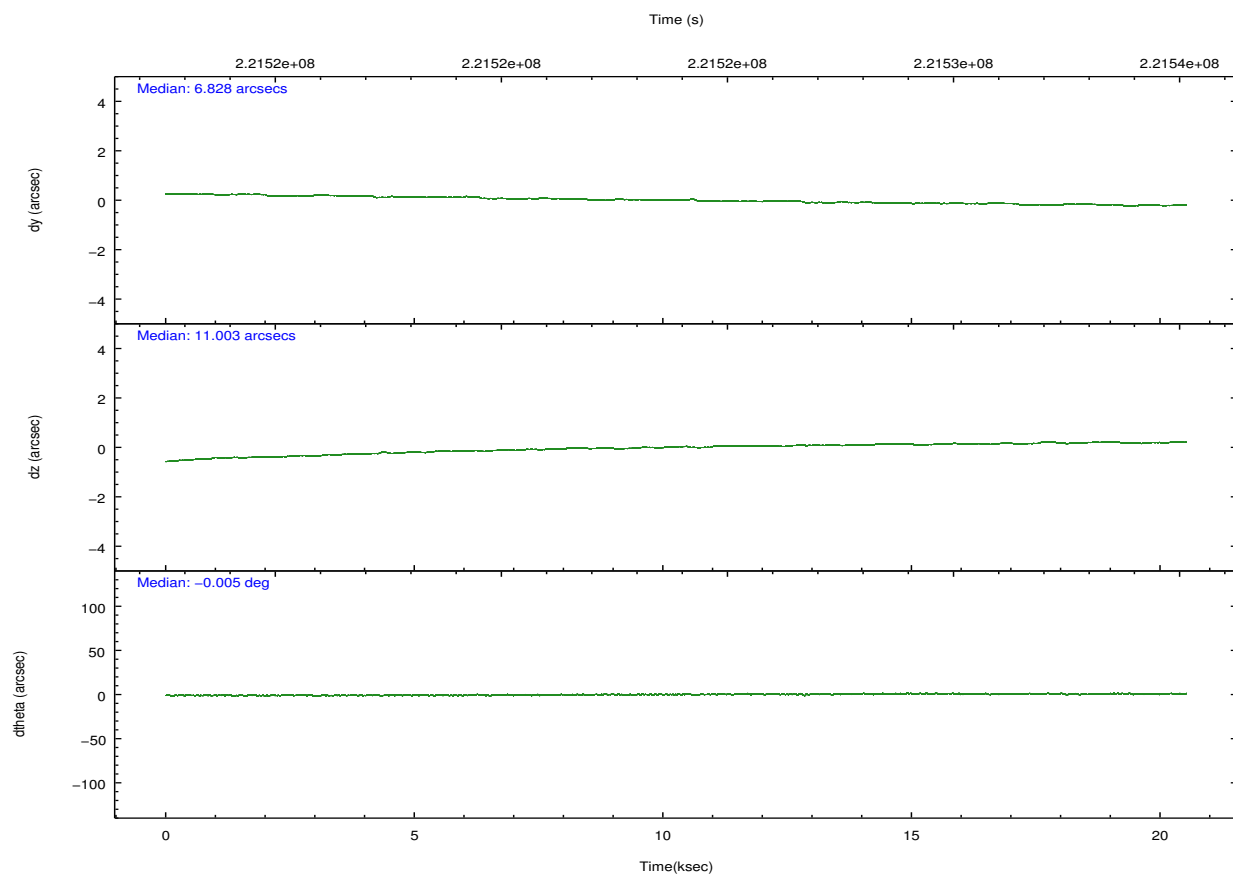
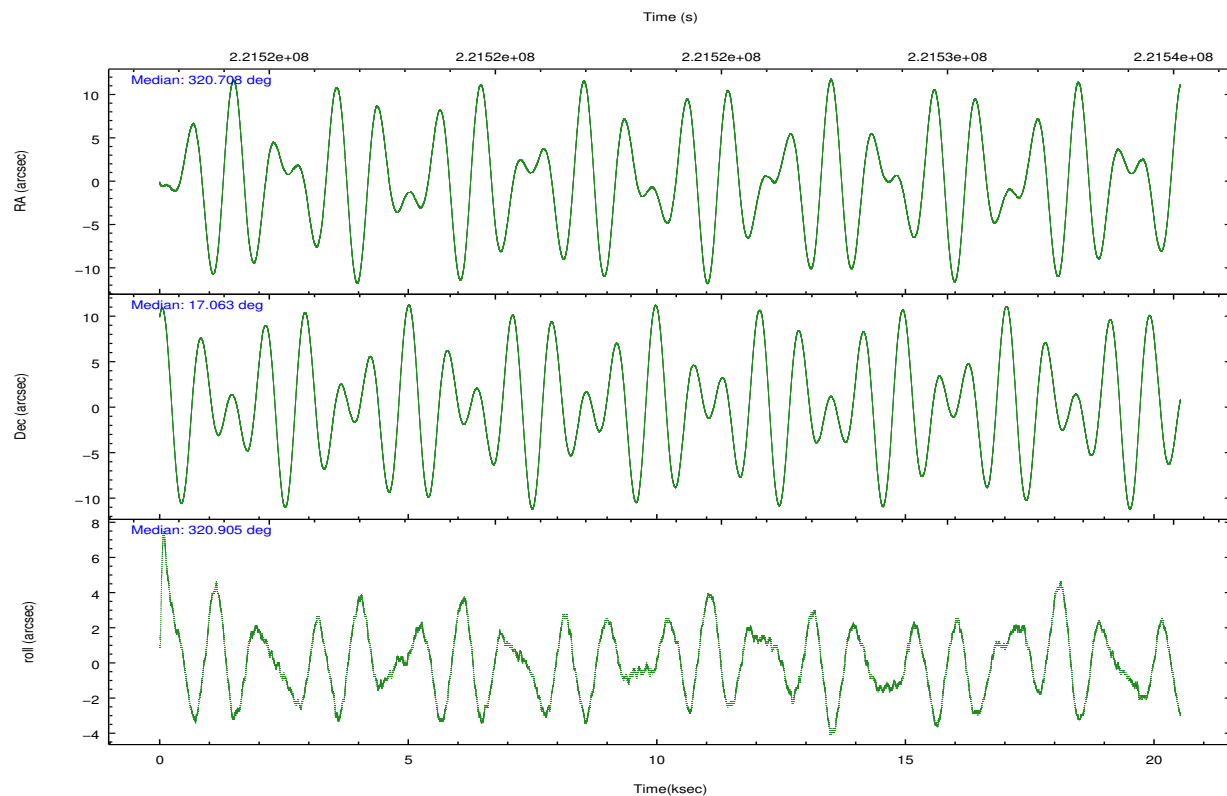
	ccd 3	ccd 5	ccd 6	ccd 7	ccd 8
level 1 events	138020	217937	140511	189949	178379
rejected events	120956	116287	122540	109296	137741
rejected %	87%	53%	87%	57%	77%

	ccd 3	ccd 5	ccd 6	ccd 7	ccd 8
grade 0 events	7527	13385	7353	8062	13756
	5%	6%	5%	4%	7%
grade 1 events	87	1077	80	196	118
	0%	0%	0%	0%	0%
grade 2 events	3406	29655	3777	16202	8672
	2%	13%	2%	8%	4%
grade 3 events	1606	4473	1699	7222	4189
	1%	2%	1%	3%	2%
grade 4 events	1607	3779	1662	7127	3924
	1%	1%	1%	3%	2%
grade 5 events	6245	16761	6520	18100	8513
	4%	7%	4%	9%	4%
grade 6 events	2919	50375	3485	42046	10101
	2%	23%	2%	22%	5%
grade 7 events	114623	98432	115935	90994	129106
	83%	45%	82%	47%	72%

## 2.2 Compared Parameters

Parameter	Planned	Actual	Parameter	Planned	Actual
Instrument	ACIS	ACIS	Obspar format version number	7	7
Detector	ACIS-35678	ACIS-35678	Obspar file type	PREDICTED	ACTUAL
Grating	NONE	NONE	Obspar update status	NONE	UPDATED
Data mode	VFAINT	VFAINT	Number of optional ACIS chips dropped	0	0
Observation mode	POINTING	POINTING	On-chip summing requested	N	N
[deg] Pointing RA	320.679977	320.708171457692	Subarray requested	NONE	NONE
[deg] Pointing Dec	17.066773	17.06283439717876	Alternating exposures requested	N	N
[deg] Pointing Roll	320.763588	320.9119418845109	[s] Primary exposure time	0.000000	3.1
[mm] SIM focus pos	-0.684267	-0.6828225247311905			
[mm] SIM defocus	0	0.001444936568705701			
[mm] SIM translation stage pos	-190.132523	-190.1400660498719			
[mm] SIM translation stage offset	0	0.00754346686406393			
[s] Observation start time (MET)	221514132.184000	221513028.15102			
Observation start date	2005-01-07T19:41:08	2005-01-07T19:23:48			
[s] Observation end time (MET)	221534132.184000	221535095.88951			
Observation end date	2005-01-08T01:14:28	2005-01-08T01:31:35			
Read mode	TIMED	TIMED			

## 2.3 Aspect

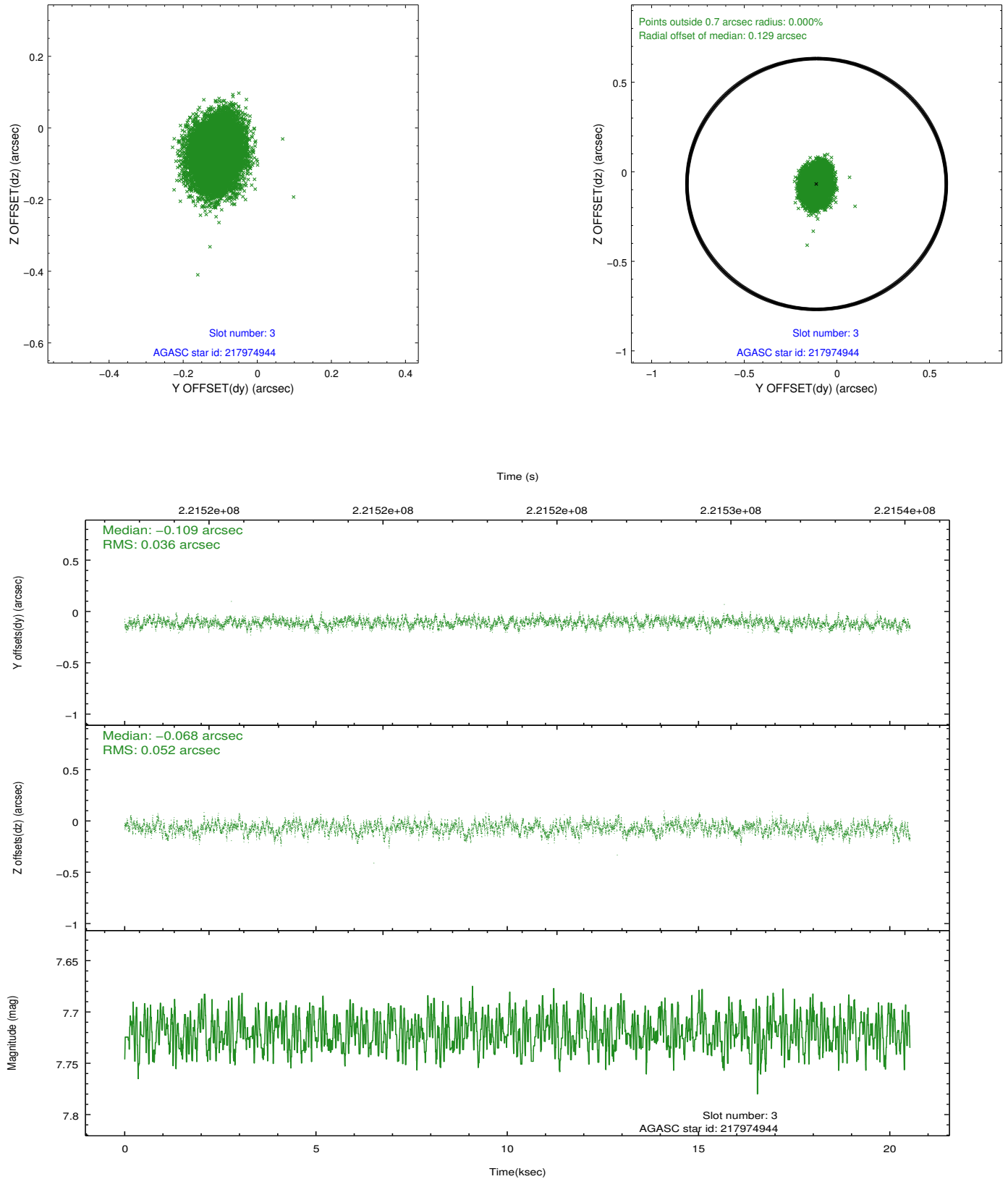


### Slot Statistics

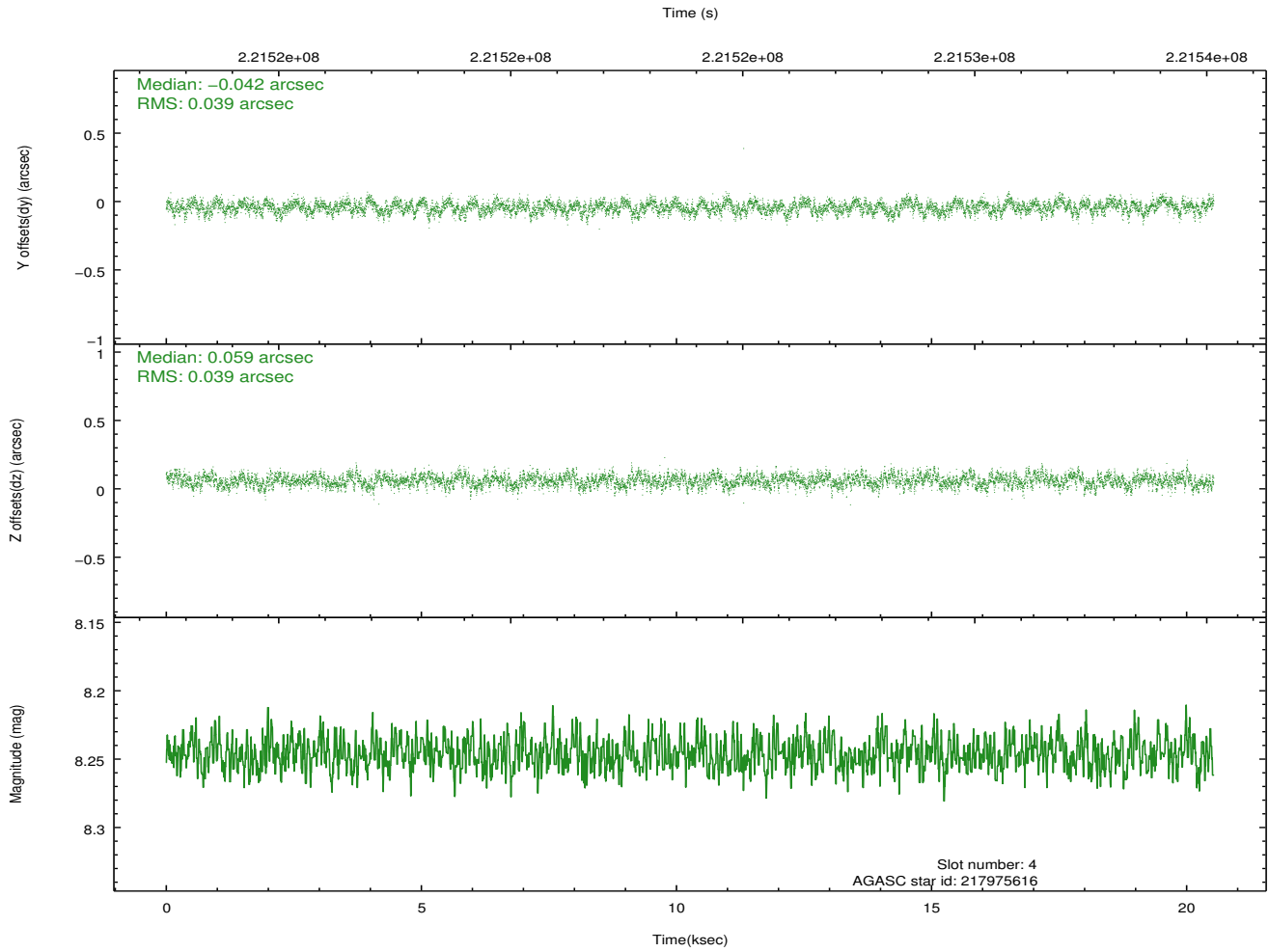
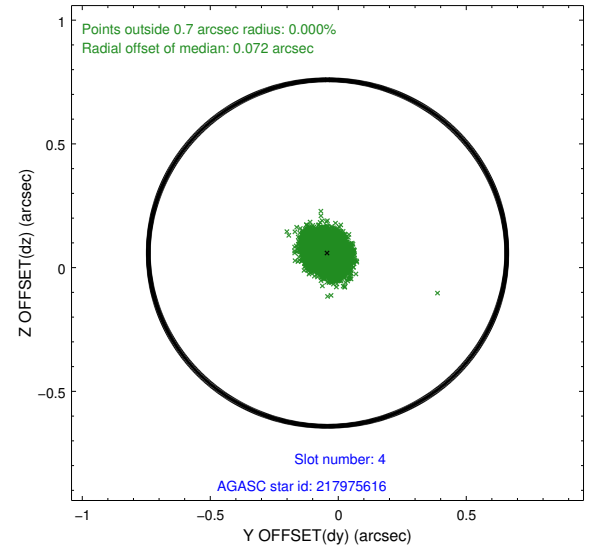
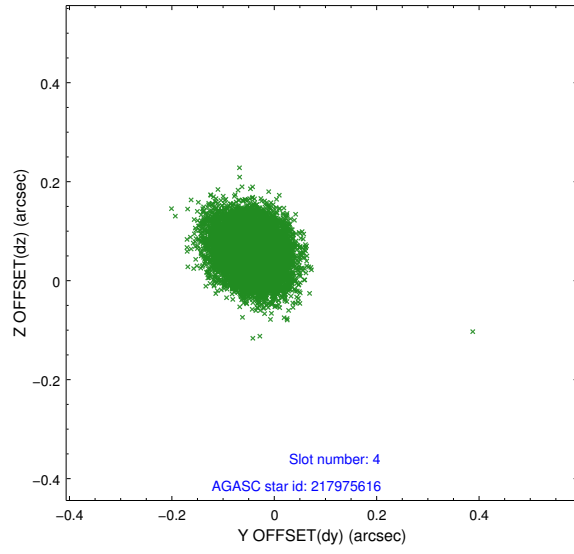
slot	status	id	mag	n_pts	med_dy	med_dz	dr1	dr2	ra	dec	mean_y	mean_z
0	FID	ACIS-S-1	7.18	5008	0.000	-0.067	0.014	0.025	0.000000	0.000000	936.45	-1727.93
1	FID	ACIS-S-4	7.20	5006	0.049	0.051	0.012	0.019	0.000000	0.000000	2154.00	176.17
2	FID	ACIS-S-5	7.23	5008	-0.075	0.029	0.011	0.020	0.000000	0.000000	-1812.27	169.94
3	GUIDE	217974944	7.72	10017	-0.109	-0.068	0.067	0.110	320.083386	16.811544	-1013.06	-2009.48
4	GUIDE	217975616	8.25	10016	-0.042	0.059	0.058	0.095	320.656647	16.556245	1100.56	-1474.37
5	GUIDE	217977208	8.83	10014	0.082	-0.047	0.107	0.161	320.809762	16.301355	2091.00	-1850.40
6	GUIDE	218502840	9.05	10009	0.090	0.049	0.087	0.143	320.360025	16.964228	-619.52	-982.24
7	GUIDE	218498128	9.19	9996	-0.025	0.006	0.118	0.174	321.244715	17.445513	638.13	2285.08

## 2.4 Star Slots

### 2.4.1 Slot 3

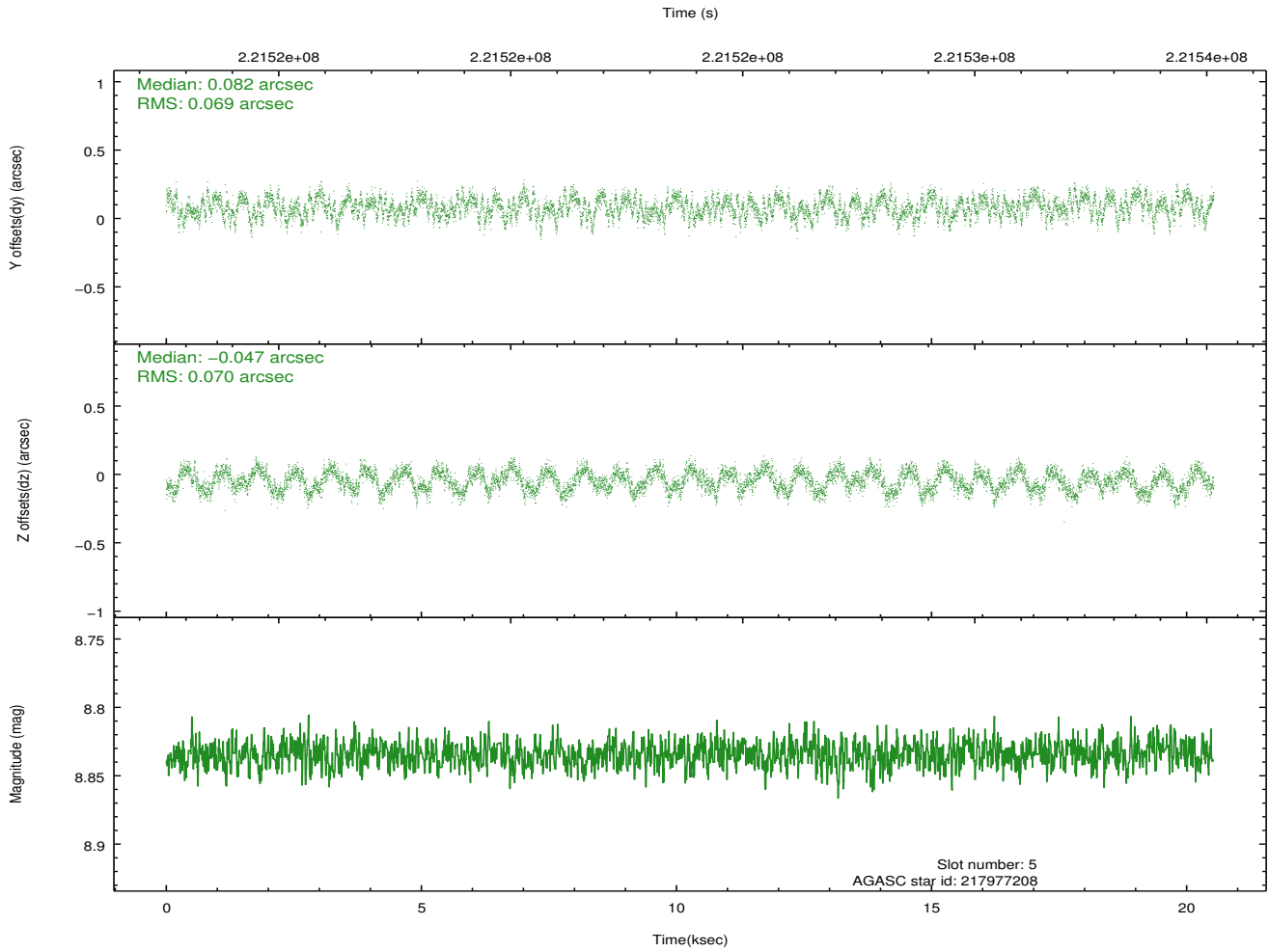
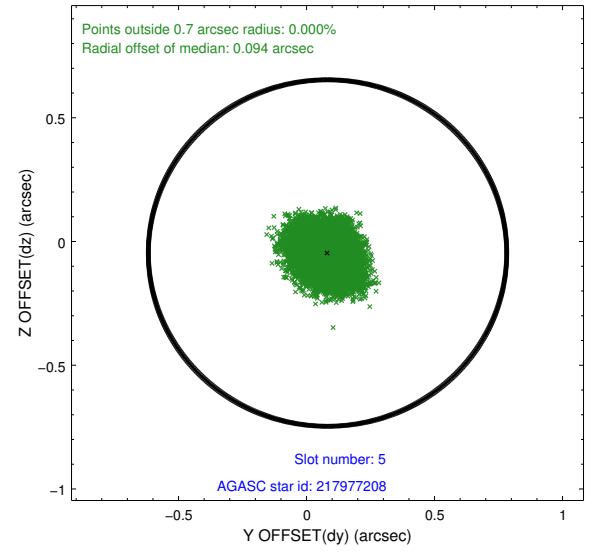
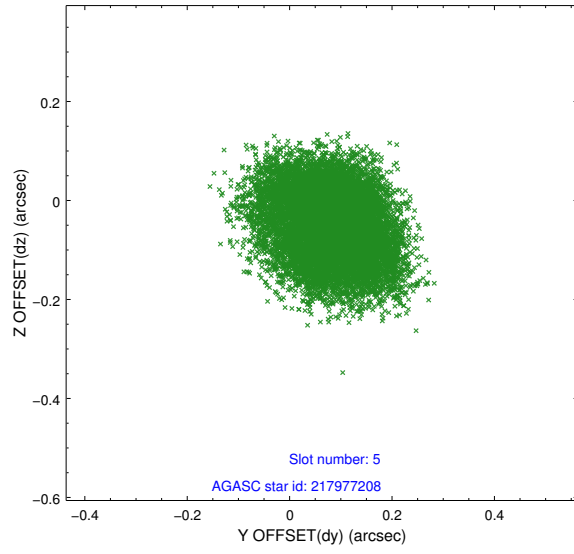


## 2.4.2 Slot 4

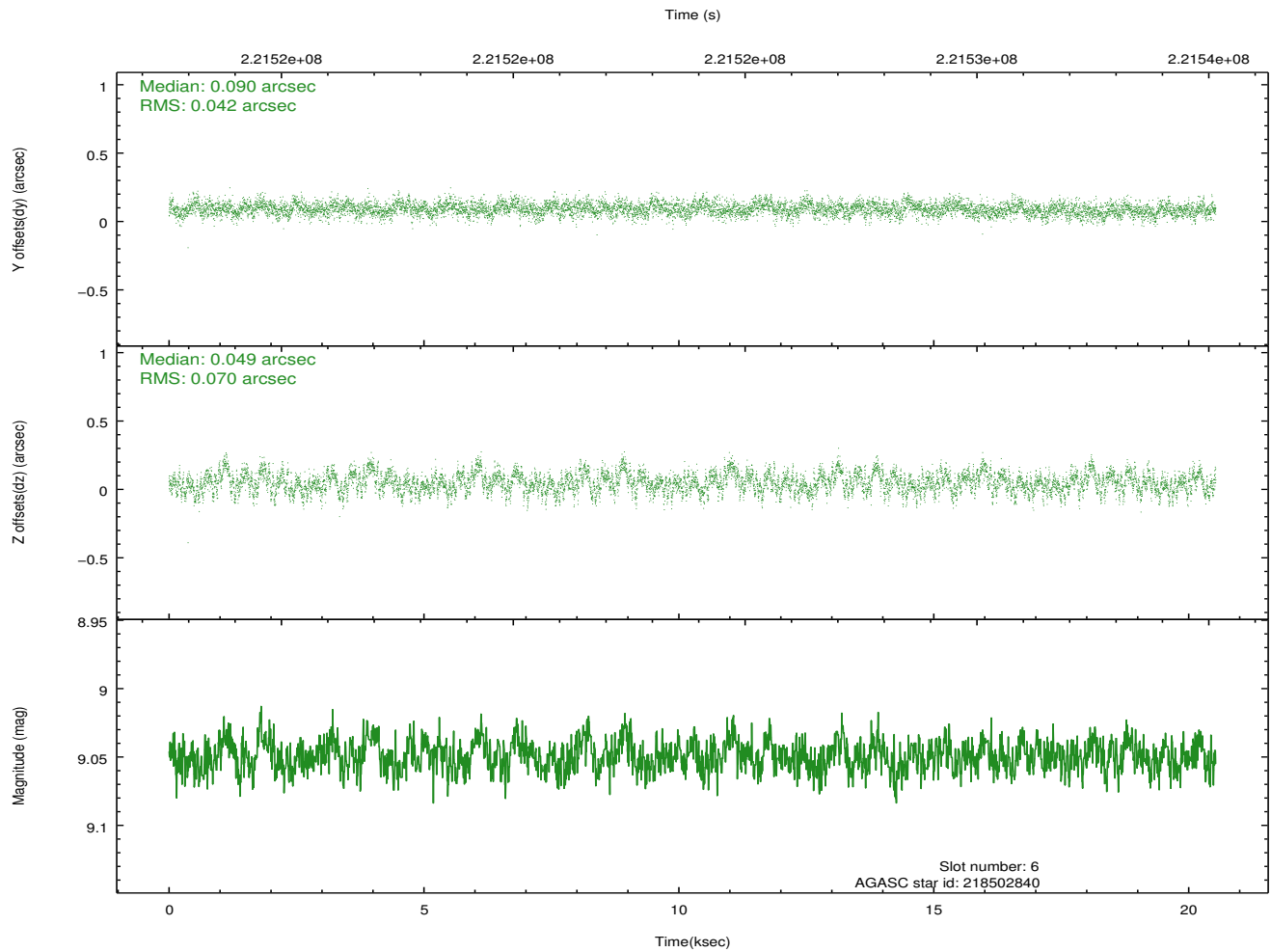
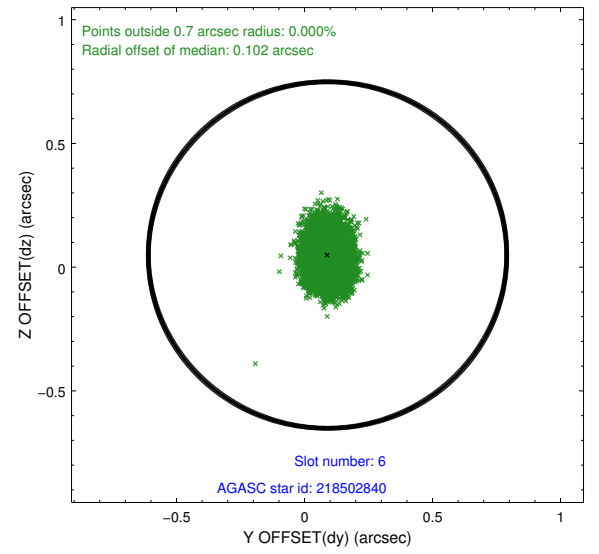
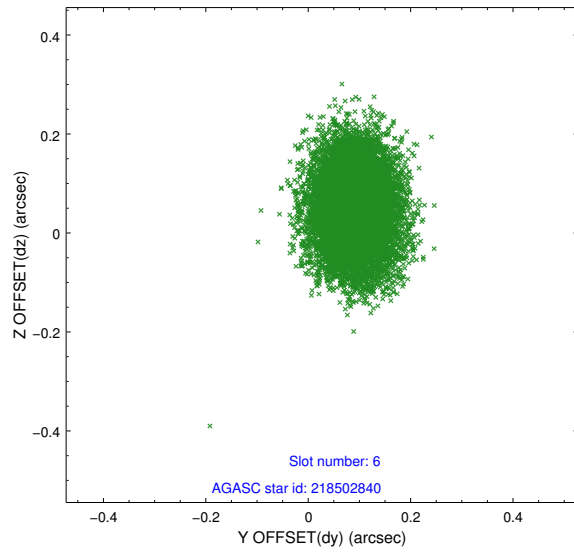




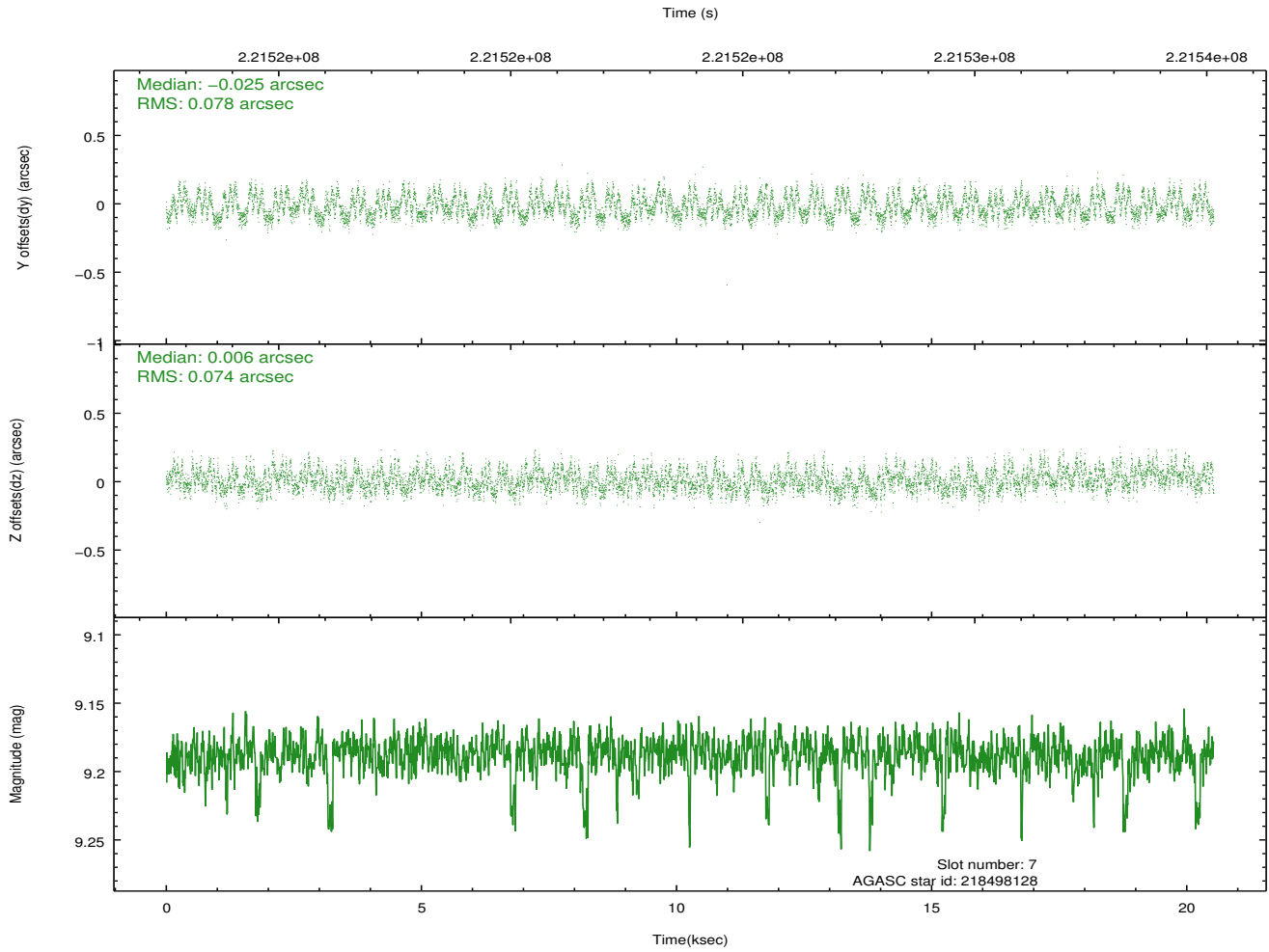
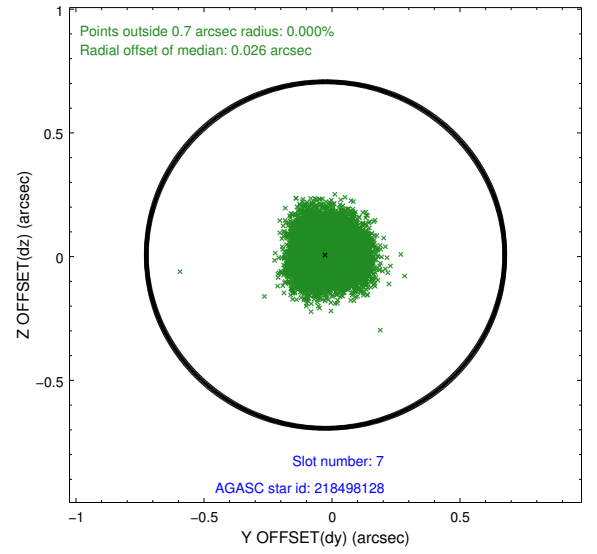
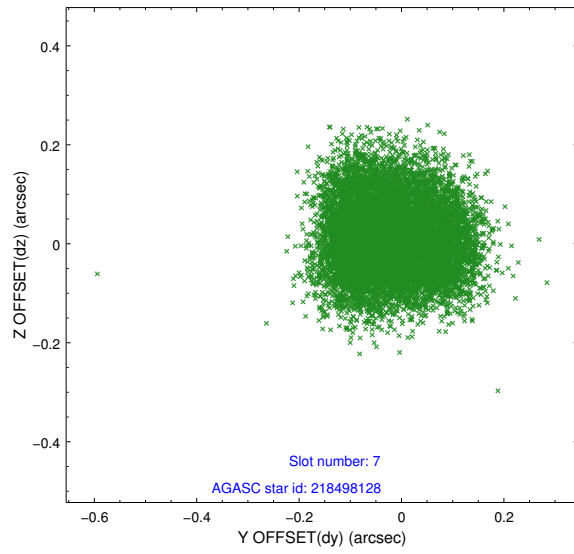
### 2.4.3 Slot 5



## 2.4.4 Slot 6

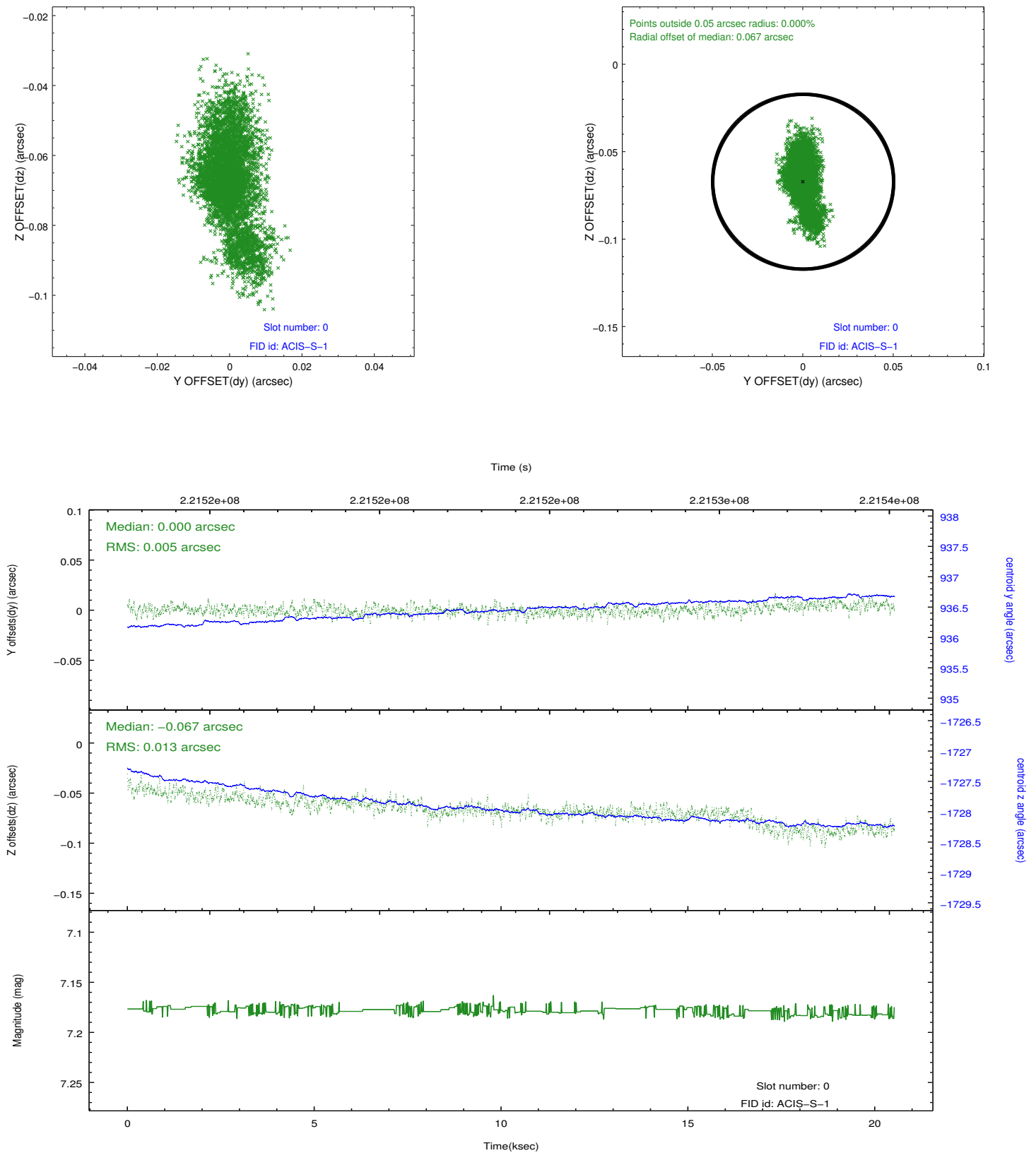


## 2.4.5 Slot 7

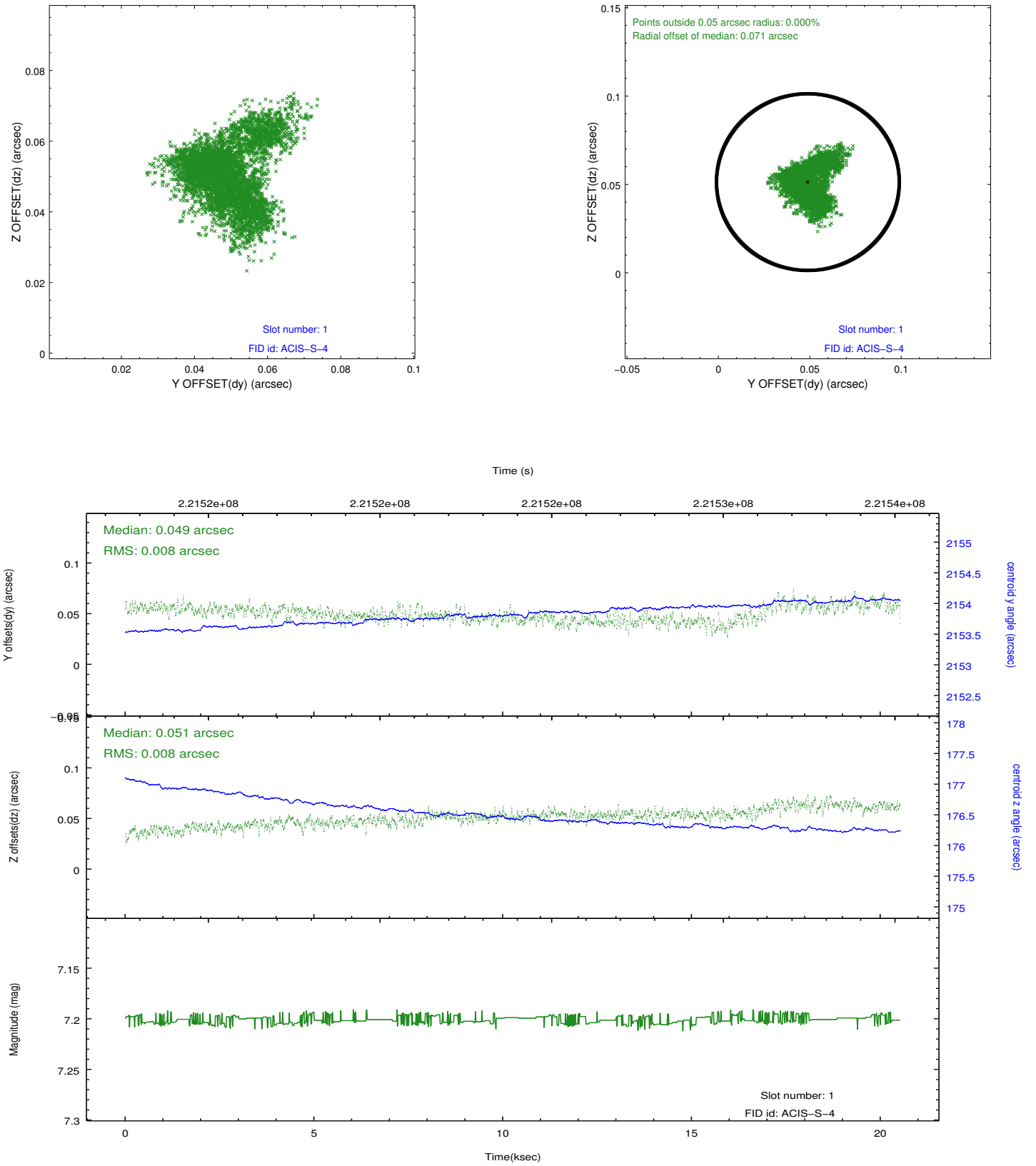


## 2.5 FID Slots

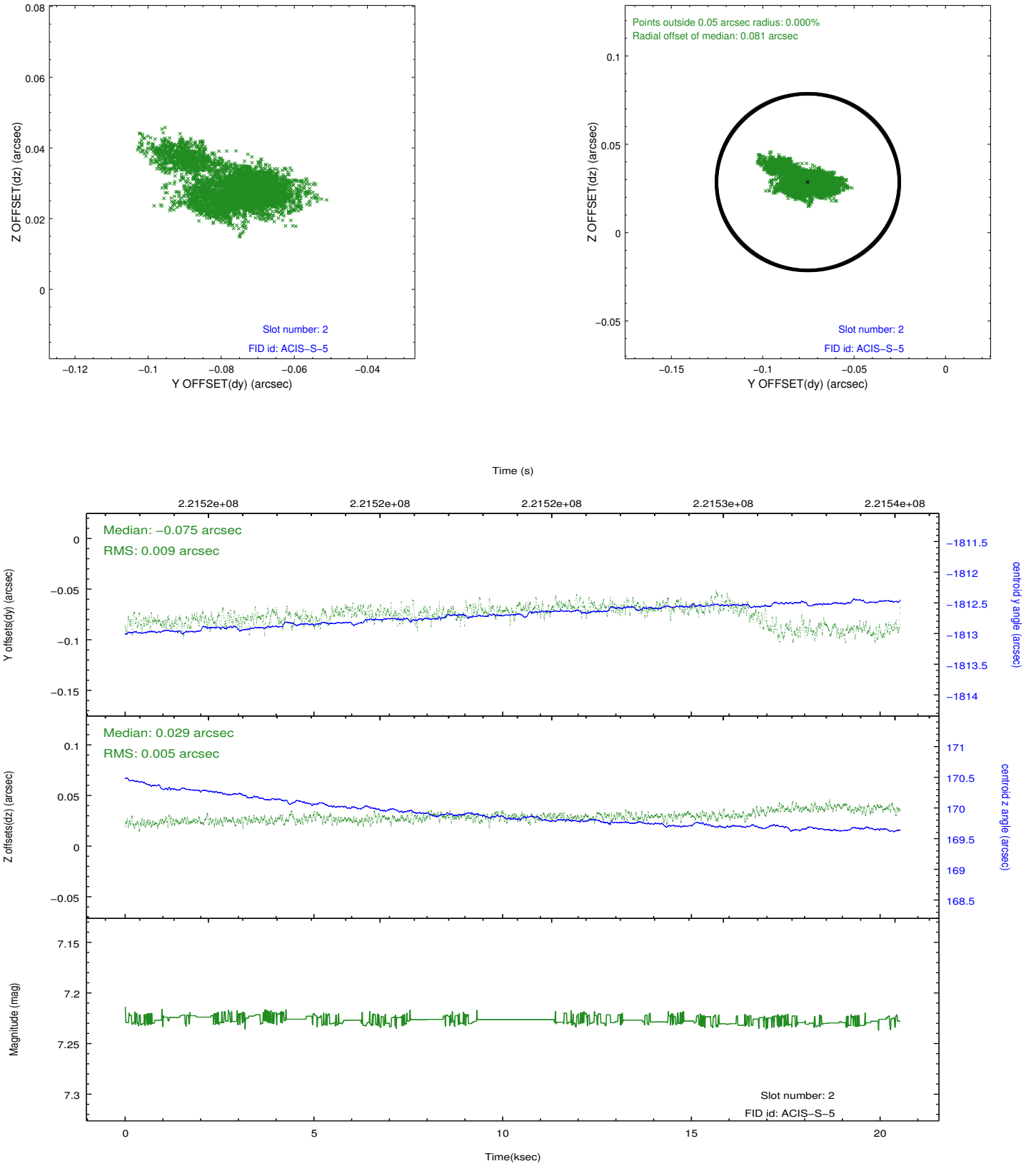
### 2.5.1 Slot 0



## 2.5.2 Slot 1



### 2.5.3 Slot 2



## A Summary

### A.1 Status

V&V Scientist	Jen Lauer
V&V Date (YYYY-MM-DD)	2013.01.09
V&V Edition	1
V&V Disposition and Status	OK
V&V Charge Time	20.03839

### A.2 Comments