

V&V Reference Report

L2 ASCDS Version : 8.4.3

Observation 55334 - L2 Version 2
Chandra X-Ray Center

L2 Processing Date : Feb 12 2012

Contents

1	Front	2
2	OBI	3
2.1	OBI	3
2.1.1	Images	3
2.1.2	Bias	3
2.1.3	Parameters	4
2.1.4	Events	4
2.2	Compared Parameters	5
2.3	Star Slots	6
2.4	FID Slots	6
A	Summary	7
A.1	Status	7
A.2	Comments	7

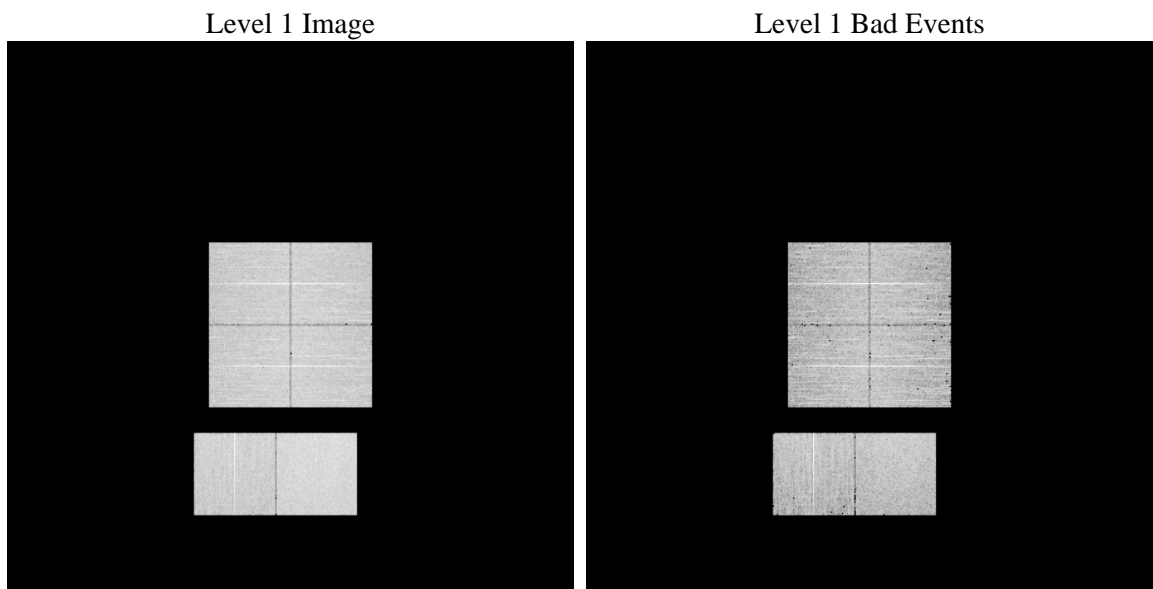
1 Front

seq_num	 	Sequence number
obs_id	55334	Observation id
title	ACIS-012367 diagnostics	Proposal title
observer	CHANDRA engineering request/realtime commanding	Principal investig
object	 	Source name
dtcycle	0	
cycle	P	events from which exps? Prim/Second/Both
ra_targ	0.0	Observer's specified target RA [deg]
dec_targ	0.0	Observer's specified target Dec [deg]
ra_nom	234.00596360345	Nominal RA [deg]
dec_nom	-14.028139232925	Nominal Dec [deg]
roll_nom	248.84253178009	Nominal Roll [deg]
revision	2	Processing version of data
ontime	8289.5577679276	Sum of GTIs [s]
livetime	8184.5903960977	Livetime [s]
ontime0	8291.1999691725	Sum of GTIs [s]
ontime1	8291.1999691725	Sum of GTIs [s]
ontime2	8291.1999691725	Sum of GTIs [s]
ontime3	8289.5167179704	Sum of GTIs [s]
ontime6	8291.1999691725	Sum of GTIs [s]
ontime7	8289.5577679276	Sum of GTIs [s]
l2events	307075	Number of level 2 events

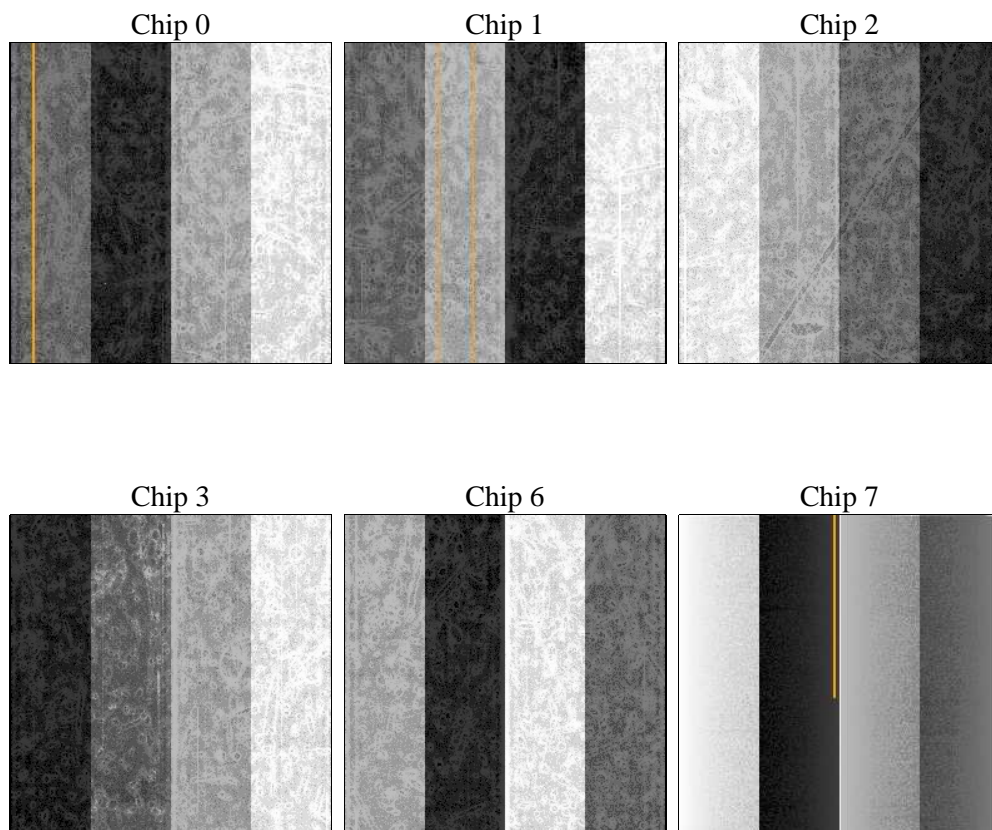
2 OBI

2.1 OBI

2.1.1 Images



2.1.2 Bias



2.1.3 Parameters

obi_num	0	Obi number	sched_exp_time	0.0	[s] Scheduled observation exposure time
ascdsver	8.4.3	Processing system revision	ontime	8289.5577679276	Sum of GTIs [s]
caldsver	4.4.7	 	ontime0	8291.1999691725	Sum of GTIs [s]
date	2012-02-12T15:21:03	Date and time of file creation	ontime1	8291.1999691725	Sum of GTIs [s]
revision	2	Processing version of data	ontime2	8291.1999691725	Sum of GTIs [s]
			ontime3	8289.5167179704	Sum of GTIs [s]
			ontime6	8291.1999691725	Sum of GTIs [s]
			ontime7	8289.5577679276	Sum of GTIs [s]
			l1events	635391	Number of level 1 events

2.1.4 Events

	ccd 0	ccd 1	ccd 2	ccd 3	ccd 6	ccd 7		ccd 0	ccd 1	ccd 2	ccd 3	ccd 6	ccd 7
level 1 events	97097	98706	100555	102612	103352	133069	grade 0 events	25618	25472	26379	26694	26245	13100
rejected events	48371	49583	51422	52859	52384	56093		26%	25%	26%	26%	25%	9%
rejected %	49%	50%	51%	51%	50%	42%	grade 1 events	141	136	176	202	146	114
								0%	0%	0%	0%	0%	0%
							grade 2 events	9033	9218	8689	8777	9348	16747
								9%	9%	8%	8%	9%	12%
							grade 3 events	3274	3257	3311	3478	3390	6881
								3%	3%	3%	3%	3%	5%
							grade 4 events	3304	3309	3477	3448	3370	6843
								3%	3%	3%	3%	3%	5%
							grade 5 events	3263	3362	3072	3587	3453	8845
								3%	3%	3%	3%	3%	6%
							grade 6 events	7518	7881	7290	7356	8635	33405
								7%	7%	7%	7%	8%	25%
							grade 7 events	44946	46071	48161	49070	48765	47134
								46%	46%	47%	47%	47%	35%

2.2 Compared Parameters

Parameter	Planned	Actual	Parameter	Planned	Actual
Instrument	ACIS	ACIS	Obspar format version number	7	7
Detector	ACIS-012367	ACIS-012367	Obspar file type	PREDICTED	ACTUAL
Grating	NONE	NONE	Obspar update status	NONE	UPDATED
Data mode	FAINT	FAINT	Number of optional ACIS chips dropped	0	0
Observation mode	SECONDARY	SECONDARY	On-chip summing requested	N	N
[deg] Pointing RA	0	234.0059636034471	Subarray requested	NONE	NONE
[deg] Pointing Dec	0	-14.0281392329252	Alternating exposures requested	N	N
[deg] Pointing Roll	0.0	248.8425317800933	[s] Primary exposure time	3.2	3.2
[mm] SIM focus pos	-1.429586	-1.428180813131781			
[mm] SIM defocus	0.1037507710433287	0.1051558262725154			
[mm] SIM translation stage pos	250.455976	250.466033080201			
[mm] SIM translation stage offset	0	-0.01005468664627074			
[s] Observation start time (MET)	424980267.174865	424980266.14986			
Observation start date	2011-06-20T18:04:27	2011-06-20T18:04:26			
[s] Observation end time (MET)	424989078.075323	424989077.05032			
Observation end date	2011-06-20T20:31:18	2011-06-20T20:31:17			
Read mode	TIMED	TIMED			

2.3 Star Slots

2.4 FID Slots

A Summary

A.1 Status

V&V Scientist	Beth Sundheim
V&V Date (YYYY-MM-DD)	2012.02.14
V&V Edition	1
V&V Disposition and Status	OK
V&V Charge Time	8.2895577679276

A.2 Comments