

V&V Reference Report

L2 ASCDS Version : 8.4.3

Observation 55074 - L2 Version 2
Chandra X-Ray Center

L2 Processing Date : Feb 26 2012

Contents

1	Front	2
2	OBI	3
2.1	OBI	3
2.1.1	Images	3
2.1.2	Bias	3
2.1.3	Parameters	4
2.1.4	Events	4
2.2	Compared Parameters	5
2.3	Star Slots	6
2.4	FID Slots	6
A	Summary	7
A.1	Status	7
A.2	Comments	7

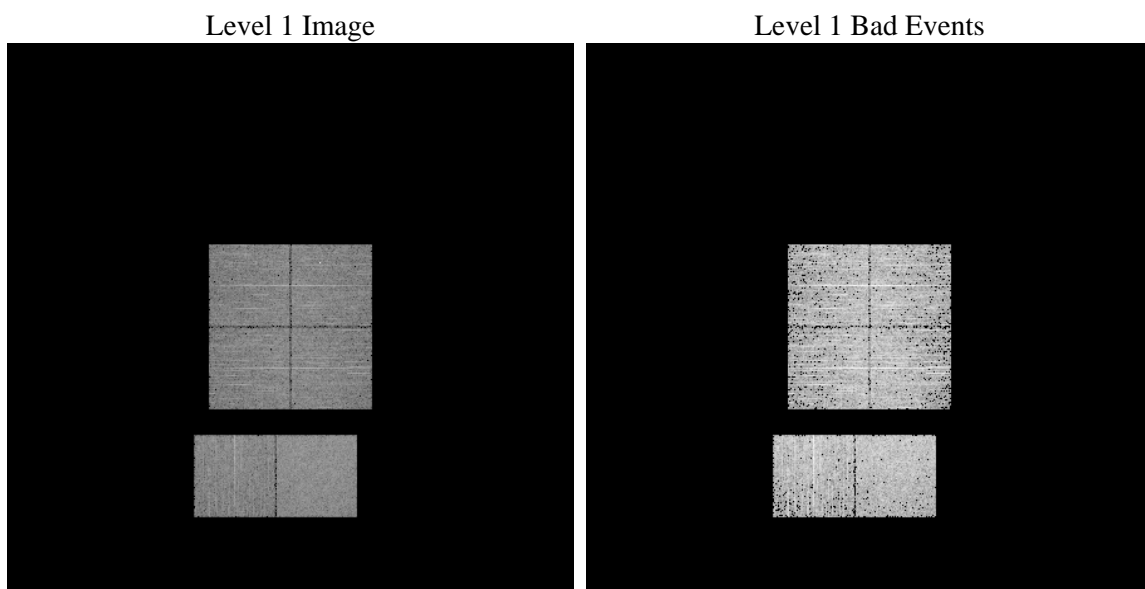
1 Front

seq_num	 	Sequence number
obs_id	55074	Observation id
title	ACIS-012367 diagnostics	Proposal title
observer	CHANDRA engineering request/realtime commanding	Principal investig
object	 	Source name
dtcycle	0	
cycle	P	events from which exps? Prim/Second/Both
ra_targ	0.0	Observer's specified target RA [deg]
dec_targ	0.0	Observer's specified target Dec [deg]
ra_nom	69.995904712902	Nominal RA [deg]
dec_nom	5.0285526173841	Nominal Dec [deg]
roll_nom	65.468813168188	Nominal Roll [deg]
revision	2	Processing version of data
ontime	3254.399987936	Sum of GTIs [s]
livetime	3213.1908157244	Livetime [s]
ontime0	3254.399987936	Sum of GTIs [s]
ontime1	3254.399987936	Sum of GTIs [s]
ontime2	3254.399987936	Sum of GTIs [s]
ontime3	3254.399987936	Sum of GTIs [s]
ontime6	3254.399987936	Sum of GTIs [s]
ontime7	3254.399987936	Sum of GTIs [s]
l2events	112523	Number of level 2 events

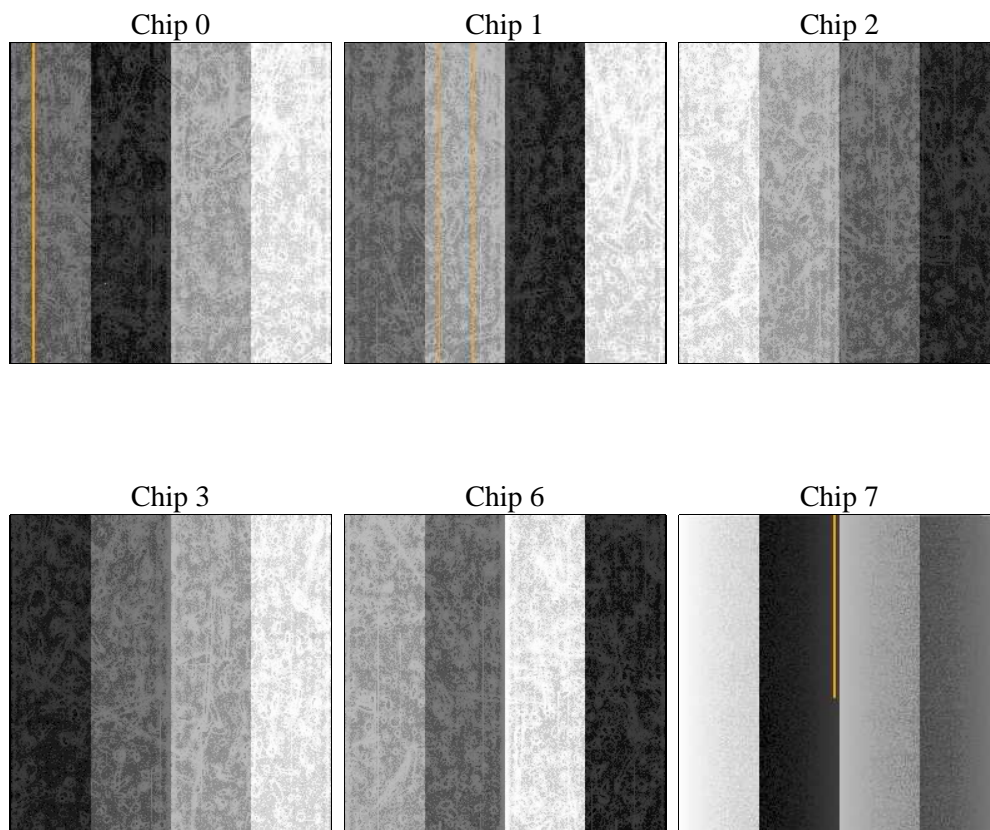
2 OBI

2.1 OBI

2.1.1 Images



2.1.2 Bias



2.1.3 Parameters

obi_num	0	Obi number	sched_exp_time	0.0	[s] Scheduled observation exposure time
ascdsver	8.4.3	Processing system revision	ontime	3254.399987936	Sum of GTIs [s]
caldsver	4.4.8	 	ontime0	3254.399987936	Sum of GTIs [s]
date	2012-02-26T05:57:04	Date and time of file creation	ontime1	3254.399987936	Sum of GTIs [s]
revision	2	Processing version of data	ontime2	3254.399987936	Sum of GTIs [s]
			ontime3	3254.399987936	Sum of GTIs [s]
			ontime6	3254.399987936	Sum of GTIs [s]
			ontime7	3254.399987936	Sum of GTIs [s]
			l1events	254879	Number of level 1 events

2.1.4 Events

	ccd 0	ccd 1	ccd 2	ccd 3	ccd 6	ccd 7		ccd 0	ccd 1	ccd 2	ccd 3	ccd 6	ccd 7
level 1 events	38879	40715	40057	41014	41754	52460	grade 0 events	9480	9920	9684	9738	9626	4623
rejected events	21207	21801	22187	23132	23119	23574		24%	24%	24%	23%	23%	8%
rejected %	54%	53%	55%	56%	55%	44%	grade 1 events	59	52	68	52	54	44
								0%	0%	0%	0%	0%	0%
							grade 2 events	3300	3746	3150	3109	3594	6537
								8%	9%	7%	7%	8%	12%
							grade 3 events	1221	1186	1275	1204	1191	2548
								3%	2%	3%	2%	2%	4%
							grade 4 events	1163	1244	1261	1291	1178	2506
								2%	3%	3%	3%	2%	4%
							grade 5 events	1327	1368	1271	1412	1425	3482
								3%	3%	3%	3%	3%	6%
							grade 6 events	2683	3024	2680	2734	3252	12992
								6%	7%	6%	6%	7%	24%
							grade 7 events	19646	20175	20668	21474	21434	19728
								50%	49%	51%	52%	51%	37%

2.2 Compared Parameters

Parameter	Planned	Actual	Parameter	Planned	Actual
Instrument	ACIS	ACIS	Obspar format version number	7	7
Detector	ACIS-012367	ACIS-012367	Obspar file type	PREDICTED	ACTUAL
Grating	NONE	NONE	Obspar update status	NONE	UPDATED
Data mode	FAINT	FAINT	Number of optional ACIS chips dropped	0	0
Observation mode	SECONDARY	SECONDARY	On-chip summing requested	N	N
[deg] Pointing RA	0	69.99590471290205	Subarray requested	NONE	NONE
[deg] Pointing Dec	0	5.028552617384094	Alternating exposures requested	N	N
[deg] Pointing Roll	0.0	65.46881316818819	[s] Primary exposure time	3.2	3.2
[mm] SIM focus pos	-1.429586	-1.428180813131781			
[mm] SIM defocus	0.1037507710433287	0.1051558262725154			
[mm] SIM translation stage pos	250.455976	250.466033080201			
[mm] SIM translation stage offset	0	-0.01005468664627074			
[s] Observation start time (MET)	437061761.822876	437061760.79787			
Observation start date	2011-11-07T14:02:42	2011-11-07T14:02:40			
[s] Observation end time (MET)	437065472.323071	437065471.29807			
Observation end date	2011-11-07T15:04:32	2011-11-07T15:04:31			
Read mode	TIMED	TIMED			

2.3 Star Slots

2.4 FID Slots

A Summary

A.1 Status

V&V Scientist	Beth Sundheim
V&V Date (YYYY-MM-DD)	2012.02.27
V&V Edition	1
V&V Disposition and Status	OK
V&V Charge Time	3.254399987936

A.2 Comments