

V&V Reference Report

L2 ASCDS Version : 8.4.3

Observation 55064 - L2 Version 2
Chandra X-Ray Center

L2 Processing Date : Feb 26 2012

Contents

| | | |
|----------|-------------------------------|----------|
| 1 | Front | 2 |
| 2 | OBI | 3 |
| 2.1 | OBI | 3 |
| 2.1.1 | Images | 3 |
| 2.1.2 | Bias | 3 |
| 2.1.3 | Parameters | 4 |
| 2.1.4 | Events | 4 |
| 2.2 | Compared Parameters | 5 |
| 2.3 | Star Slots | 6 |
| 2.4 | FID Slots | 6 |
| A | Summary | 7 |
| A.1 | Status | 7 |
| A.2 | Comments | 7 |

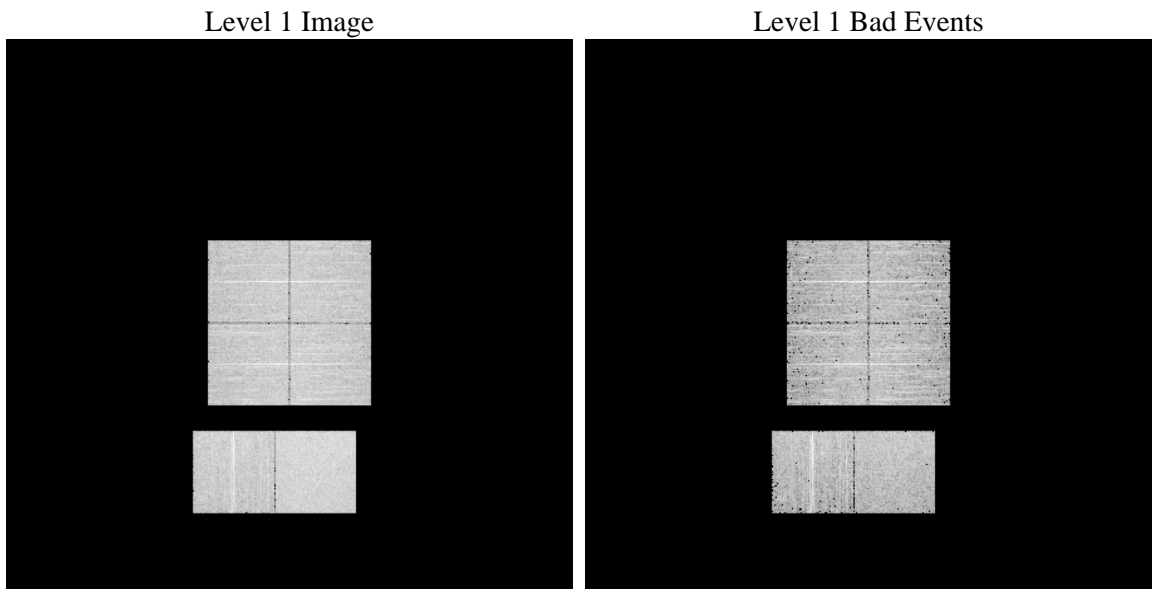
1 Front

| | | |
|----------|---|---|
| seq_num | | Sequence number |
| obs_id | 55064 | Observation id |
| title | ACIS-012367 diagnostics | Proposal title |
| observer | CHANDRA engineering request/realtime commanding | Principal investig |
| object | | Source name |
| dtcycle | 0 | |
| cycle | P | events from which exps? Prim/Second/Both |
| ra_targ | 0.0 | Observer's specified target RA [deg] |
| dec_targ | 0.0 | Observer's specified target Dec [deg] |
| ra_nom | 27.688953206808 | Nominal RA [deg] |
| dec_nom | 38.972646378524 | Nominal Dec [deg] |
| roll_nom | 219.63416764121 | Nominal Roll [deg] |
| revision | 2 | Processing version of data |
| ontime | 5425.8146321774 | Sum of GTIs [s] |
| livetime | 5357.1097002714 | Livetime [s] |
| ontime0 | 5425.7735921741 | Sum of GTIs [s] |
| ontime1 | 5425.7325521708 | Sum of GTIs [s] |
| ontime2 | 5425.6915121675 | Sum of GTIs [s] |
| ontime3 | 5425.8556721807 | Sum of GTIs [s] |
| ontime6 | 5425.6504721642 | Sum of GTIs [s] |
| ontime7 | 5425.8146321774 | Sum of GTIs [s] |
| l2events | 183469 | Number of level 2 events |

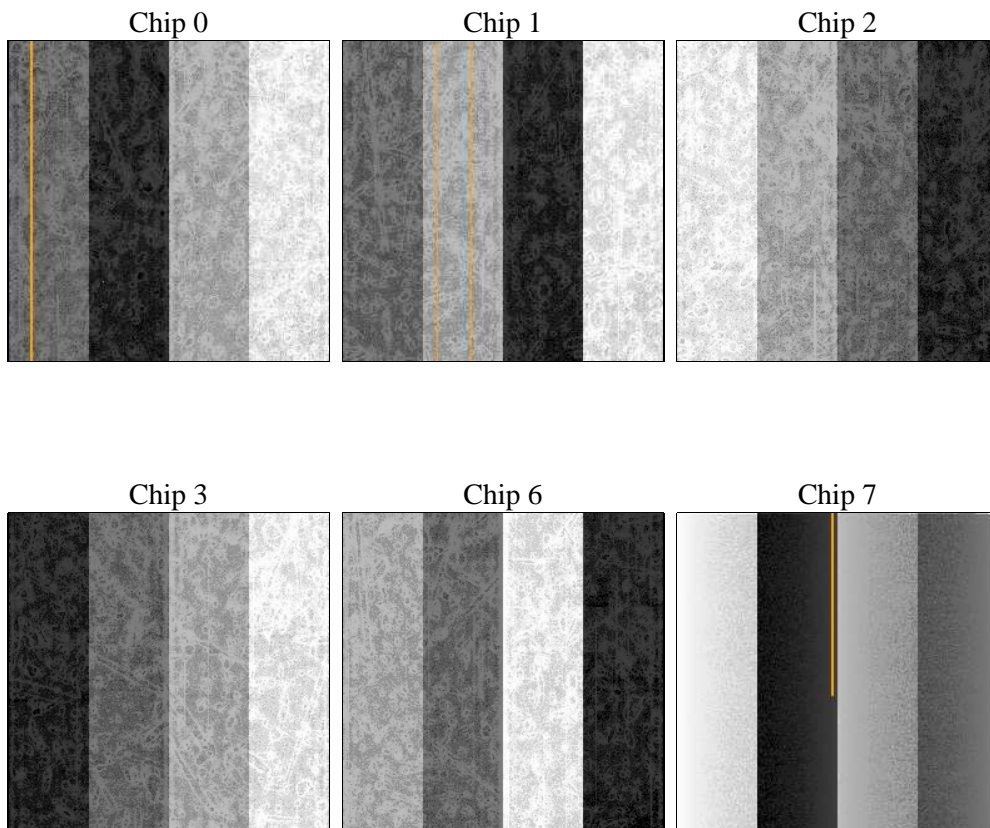
2 OBI

2.1 OBI

2.1.1 Images



2.1.2 Bias



2.1.3 Parameters

| | | | | | |
|----------|---------------------|--------------------------------|----------------|-----------------|---|
| obi_num | 0 | Obi number | sched_exp_time | 0.0 | [s] Scheduled observation exposure time |
| ascdsver | 8.4.3 | Processing system revision | ontime | 5425.8146321774 | Sum of GTIs [s] |
| caldsver | 4.4.8 | | ontime0 | 5425.7735921741 | Sum of GTIs [s] |
| date | 2012-02-26T06:44:50 | Date and time of file creation | ontime1 | 5425.7325521708 | Sum of GTIs [s] |
| revision | 2 | Processing version of data | ontime2 | 5425.6915121675 | Sum of GTIs [s] |
| | | | ontime3 | 5425.8556721807 | Sum of GTIs [s] |
| | | | ontime6 | 5425.6504721642 | Sum of GTIs [s] |
| | | | ontime7 | 5425.8146321774 | Sum of GTIs [s] |
| | | | l1events | 417375 | Number of level 1 events |

2.1.4 Events

| | ccd 0 | ccd 1 | ccd 2 | ccd 3 | ccd 6 | ccd 7 | | ccd 0 | ccd 1 | ccd 2 | ccd 3 | ccd 6 | ccd 7 |
|-----------------|-------|-------|-------|-------|-------|-------|----------------|-------|-------|-------|-------|-------|-------|
| level 1 events | 63205 | 64531 | 65769 | 67998 | 69452 | 86420 | grade 0 events | 15131 | 14124 | 15920 | 15536 | 14694 | 7426 |
| rejected events | 34134 | 35351 | 36603 | 38831 | 39292 | 38913 | | 23% | 21% | 24% | 22% | 21% | 8% |
| rejected % | 54% | 54% | 55% | 57% | 56% | 45% | grade 1 events | 87 | 52 | 109 | 101 | 68 | 58 |
| | | | | | | | | 0% | 0% | 0% | 0% | 0% | 0% |
| | | | | | | | grade 2 events | 5387 | 6463 | 4883 | 5090 | 6424 | 10541 |
| | | | | | | | | 8% | 10% | 7% | 7% | 9% | 12% |
| | | | | | | | grade 3 events | 1996 | 1840 | 1992 | 2093 | 1816 | 3940 |
| | | | | | | | | 3% | 2% | 3% | 3% | 2% | 4% |
| | | | | | | | grade 4 events | 1919 | 1834 | 2033 | 2010 | 1903 | 3906 |
| | | | | | | | | 3% | 2% | 3% | 2% | 2% | 4% |
| | | | | | | | grade 5 events | 2152 | 1994 | 2123 | 2324 | 2121 | 5690 |
| | | | | | | | | 3% | 3% | 3% | 3% | 3% | 6% |
| | | | | | | | grade 6 events | 4659 | 4943 | 4356 | 4455 | 5338 | 21715 |
| | | | | | | | | 7% | 7% | 6% | 6% | 7% | 25% |
| | | | | | | | grade 7 events | 31874 | 33281 | 34353 | 36389 | 37088 | 33144 |
| | | | | | | | | 50% | 51% | 52% | 53% | 53% | 38% |

2.2 Compared Parameters

| Parameter | Planned | Actual |
|-----------------------------------|---------------------|----------------------|
| Instrument | ACIS | ACIS |
| Detector | ACIS-012367 | ACIS-012367 |
| Grating | NONE | NONE |
| Data mode | FAINT | FAINT |
| Observation mode | SECONDARY | SECONDARY |
| [deg] Pointing RA | 0 | 27.68895320680756 |
| [deg] Pointing Dec | 0 | 38.97264637852381 |
| [deg] Pointing Roll | 0.0 | 219.6341676412139 |
| [mm] SIM focus pos | -1.429586 | -1.428180813131781 |
| [mm] SIM defocus | 0.1037507710433287 | 0.1051558262725154 |
| [mm] SIM translation stage pos | 250.455976 | 250.466033080201 |
| [mm] SIM translation stage offset | 0 | -0.01005468664627074 |
| [s] Observation start time (MET) | 437318585.836401 | 437318584.8114 |
| Observation start date | 2011-11-10T13:23:06 | 2011-11-10T13:23:04 |
| [s] Observation end time (MET) | 437325906.386787 | 437325905.36179 |
| Observation end date | 2011-11-10T15:25:06 | 2011-11-10T15:25:05 |
| Read mode | TIMED | TIMED |

| Parameter | Planned | Actual |
|---------------------------------------|-----------|---------|
| Obspar format version number | 7 | 7 |
| Obspar file type | PREDICTED | ACTUAL |
| Obspar update status | NONE | UPDATED |
| Number of optional ACIS chips dropped | 0 | 0 |
| On-chip summing requested | N | N |
| Subarray requested | NONE | NONE |
| Alternating exposures requested | N | N |
| [s] Primary exposure time | 3.2 | 3.2 |

2.3 Star Slots

2.4 FID Slots

A Summary

A.1 Status

| | |
|----------------------------|-----------------|
| V&V Scientist | Jen Lauer |
| V&V Date (YYYY-MM-DD) | 2012.02.28 |
| V&V Edition | 1 |
| V&V Disposition and Status | OK |
| V&V Charge Time | 5.4258146321774 |

A.2 Comments