

# V&V Reference Report

## L2 ASCDS Version : 7.6.7.1

Observation 5444 - L2 Version 004  
Chandra X-Ray Center

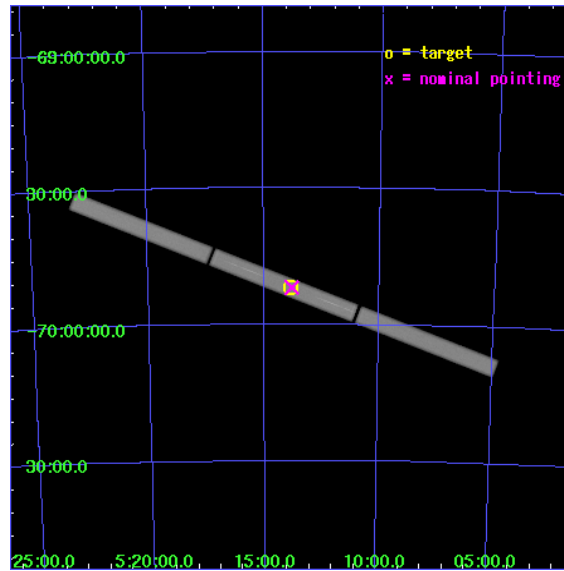
L2 Processing Date : Mar 22 2006

## Contents

<b>1</b>	<b>Front</b>	<b>2</b>
<b>2</b>	<b>OBI</b>	<b>3</b>
2.1	OBI . . . . .	3
2.1.1	Images . . . . .	3
2.1.2	Parameters . . . . .	4
2.1.3	Events . . . . .	4
2.2	Compared Parameters . . . . .	5
2.3	Aspect . . . . .	6
2.4	Star Slots . . . . .	9
2.4.1	Slot 3 . . . . .	9
2.4.2	Slot 4 . . . . .	10
2.4.3	Slot 5 . . . . .	11
2.4.4	Slot 6 . . . . .	12
2.4.5	Slot 7 . . . . .	13
2.5	FID Slots . . . . .	14
2.5.1	Slot 0 . . . . .	14
2.5.2	Slot 1 . . . . .	15
<b>3</b>	<b>Gratings</b>	<b>16</b>
3.1	LETG Arm . . . . .	16
<b>A</b>	<b>Summary</b>	<b>18</b>
A.1	Status . . . . .	18
A.2	Comments . . . . .	18

# 1 Front

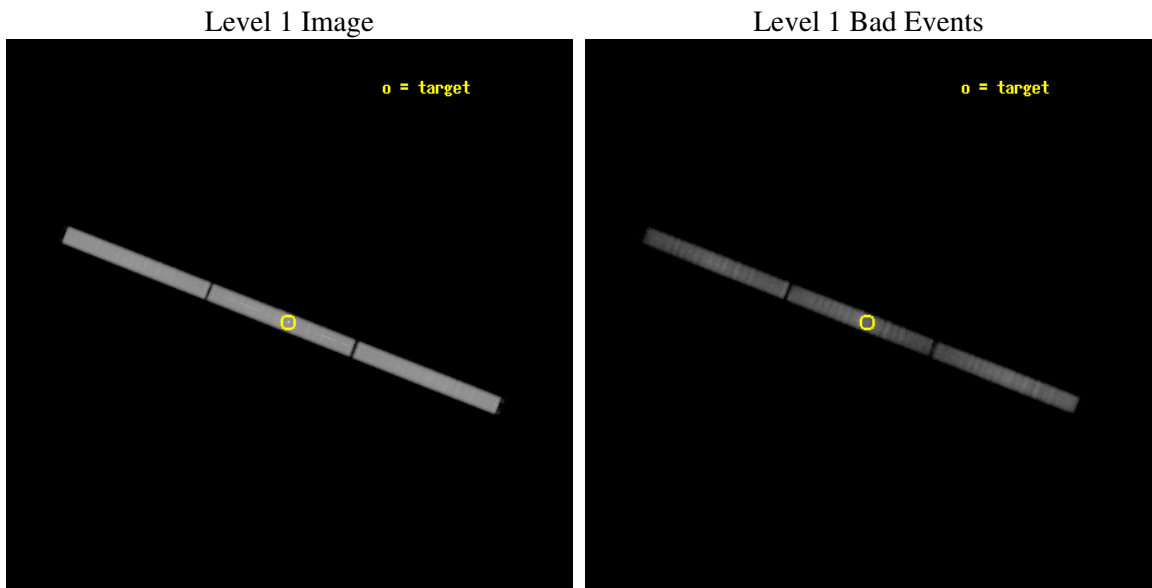
seq_num	300160
obs_id	5444
title	Testing Accretion Scenarios at the Eddington Limit
observer	Dr. Vadim Burwitz
object	RXJ0513.9-6951
ra_targ	78.461667
dec_targ	-69.863056
ra_nom	78.448823916789
dec_nom	-69.864615326551
roll_nom	201.26549308038
revision	4
ontime	25160.93239665
livetime	25002.209324784
l2events	1384230



## 2 OBI

### 2.1 OBI

#### 2.1.1 Images



### 2.1.2 Parameters

obi_num	2
ascdsver	7.6.7.1
caldsver	3.2.1
date	2006-03-22T20:32:11
revision	4

sched_exp_time	25000.000000
ontime	25161.957396716
l1events	2026974

### 2.1.3 Events

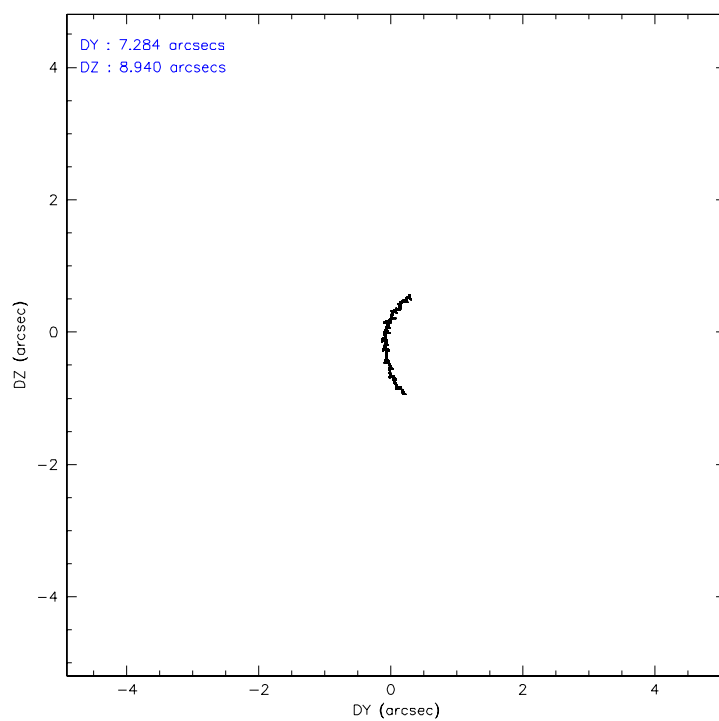
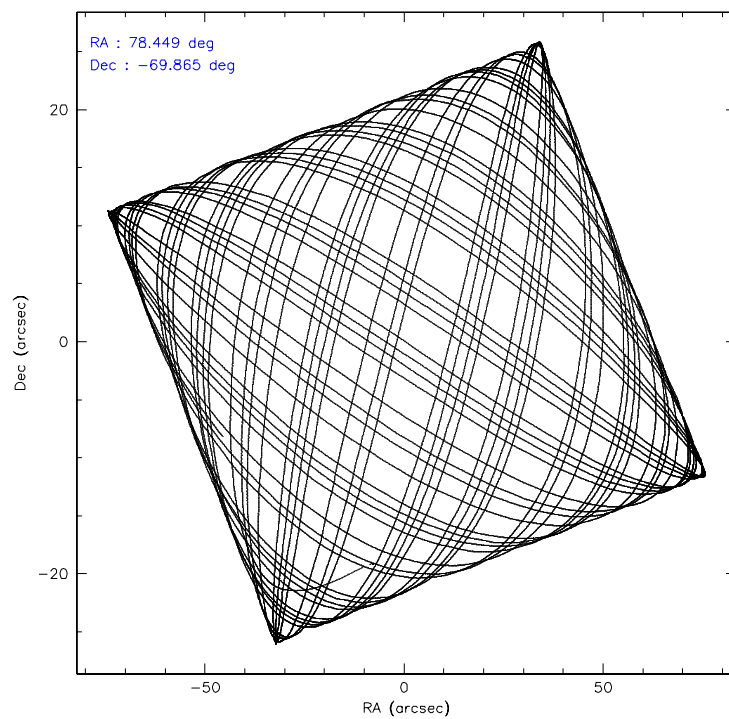
Level 1 Events

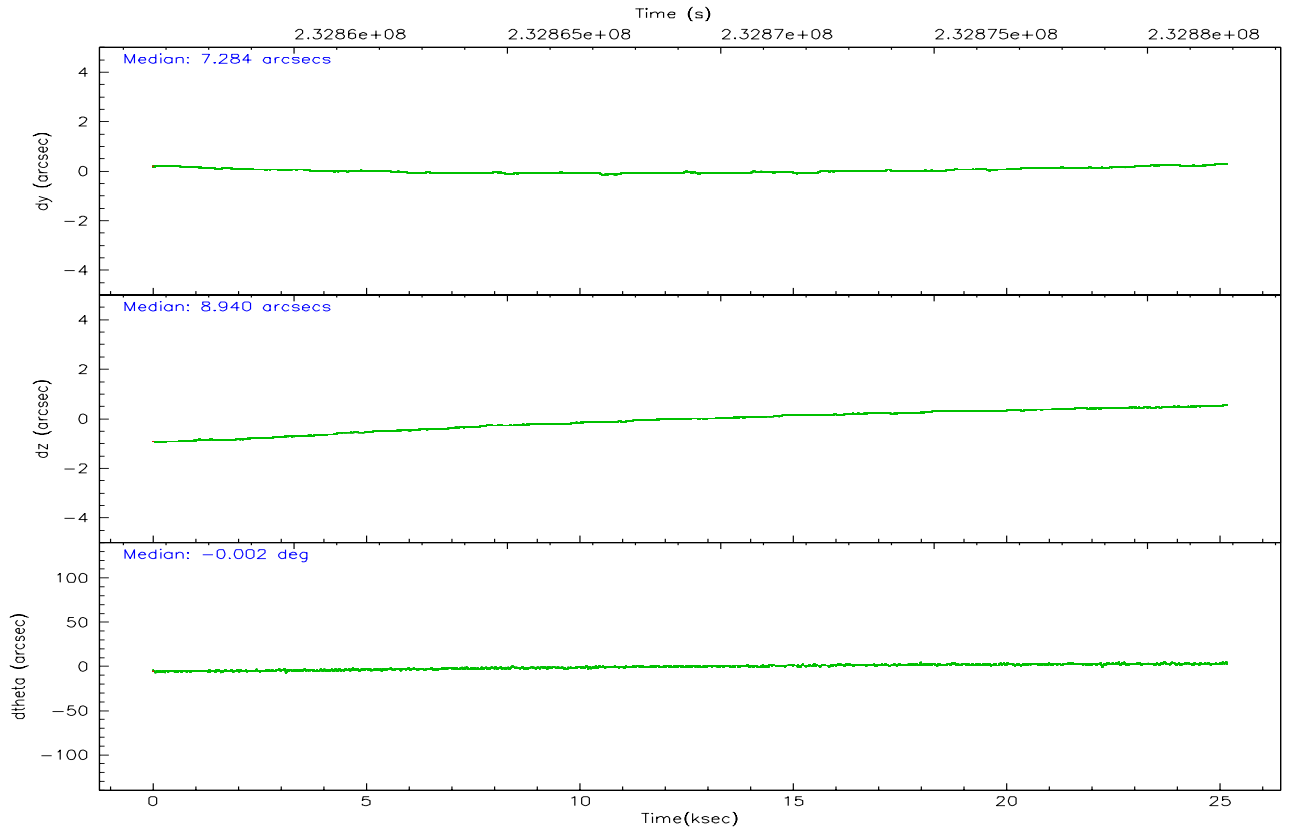
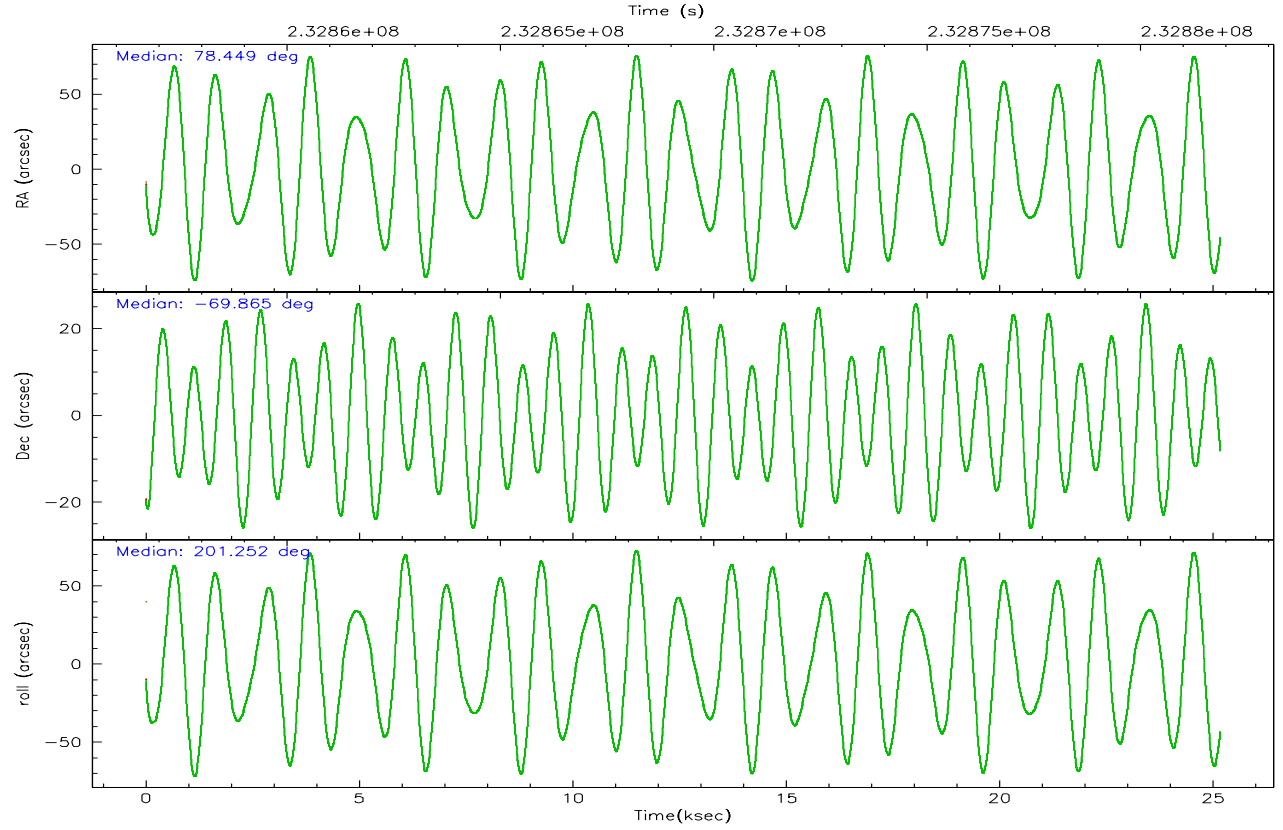
	<b>segment 1</b>	<b>segment 2</b>	<b>segment 3</b>
level 1 events	684982	672304	669688
rejected events	143511	154291	169312
rejected %	20%	22%	25%

## 2.2 Compared Parameters

Parameter	Planned	Actual	Parameter	Planned	Actual
Instrument	HRC	HRC	Obspar format version number	6	6
Detector	HRC-S	HRC-S	Obspar file type	PREDICTED	ACTUAL
Grating	LETG	LETG	Obspar update status	NONE	UPDATED
Data mode	OBSERVING	OBSERVING			
Observation mode	POINTING	POINTING			
Pointing RA	78.497523	78.44882391678914			
Pointing Dec	-69.841460	-69.86461532655149			
Pointing Roll	201.243881	201.2654930803824			
SIM focus pos (mm)	-1.429586	-1.428180813131781			
SIM defocus (mm)	0.1037507710433287	0.1051558262725154			
SIM translation stage pos (mm)	250.455976	250.466033080201			
SIM translation stage offset (mm)	0	-0.01005468664627074			
Observation start time	232856872.184000	232855859.57778			
Observation start date	2005-05-19T02:26:48	2005-05-19T02:10:59			
Observation end time	232881872.184000	232882604.904			
Observation end date	2005-05-19T09:23:28	2005-05-19T09:36:44			

## 2.3 Aspect





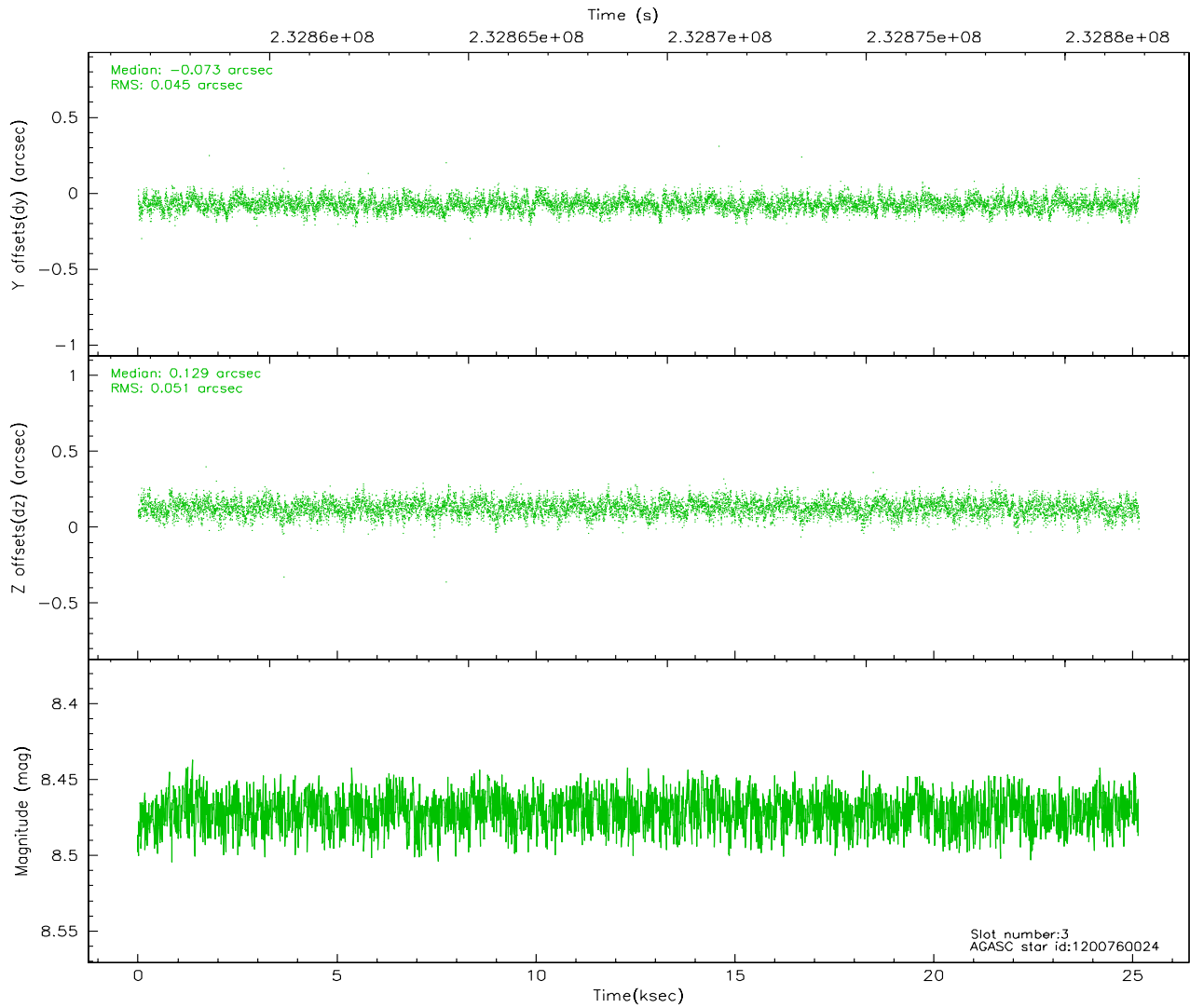
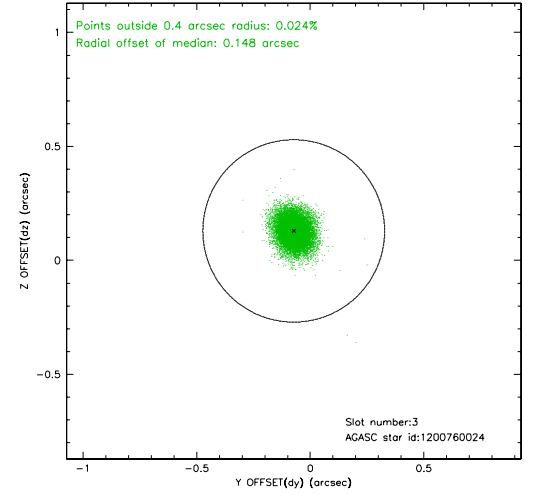
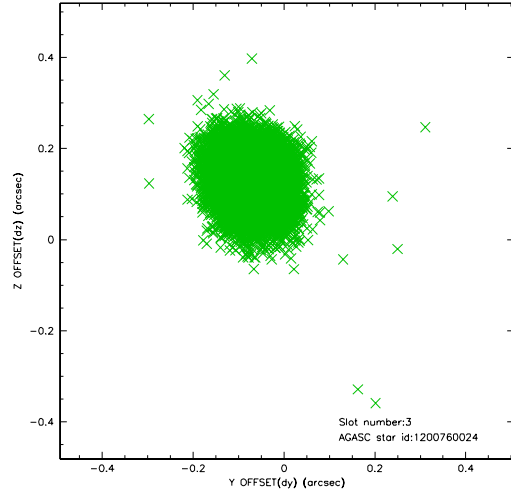
### Slot Statistics

slot	status	id	mag	n_pts	med_dy	med_dz	dr1	dr2	ra	dec	mean_y	mean_z
0	FID	HRC-S-2	7.04	6138	0.185	-0.121	0.009	0.015	0.000000	0.000000	1238.25	-450.14
1	FID	HRC-S-3	7.05	6137	0.081	-0.077	0.009	0.015	0.000000	0.000000	-1164.03	572.05
2	OMITTED		0.00	0	0.000	0.000	0.000	0.000	0.000000	0.000000	0.00	0.00
3	GUIDE	1200760024	8.47	12274	-0.073	0.129	0.071	0.116	77.625244	-69.320410	357.36	-2142.26
4	GUIDE	1201280984	7.01	12274	-0.034	0.170	0.061	0.096	77.867422	-69.546090	355.55	-1274.20
5	GUIDE	1201409432	9.04	12270	0.018	-0.216	0.080	0.131	79.317334	-70.259796	-381.09	1770.89
6	GUIDE	1201280072	8.53	12272	0.065	0.057	0.065	0.108	77.357470	-69.714246	1165.26	-929.59
7	GUIDE	1201411776	8.87	12265	0.029	-0.140	0.101	0.160	79.010603	-70.456328	226.79	2289.30

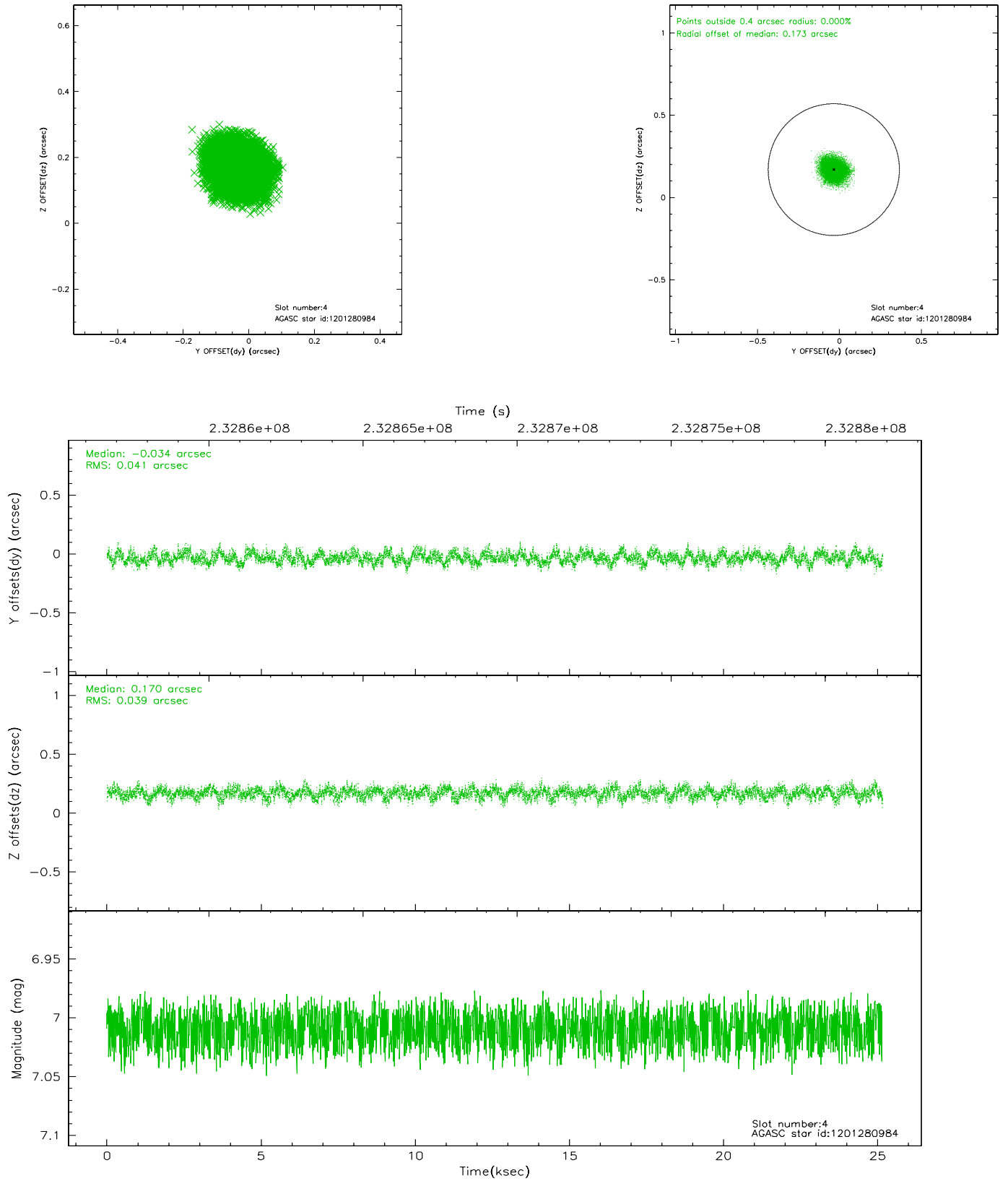


## 2.4 Star Slots

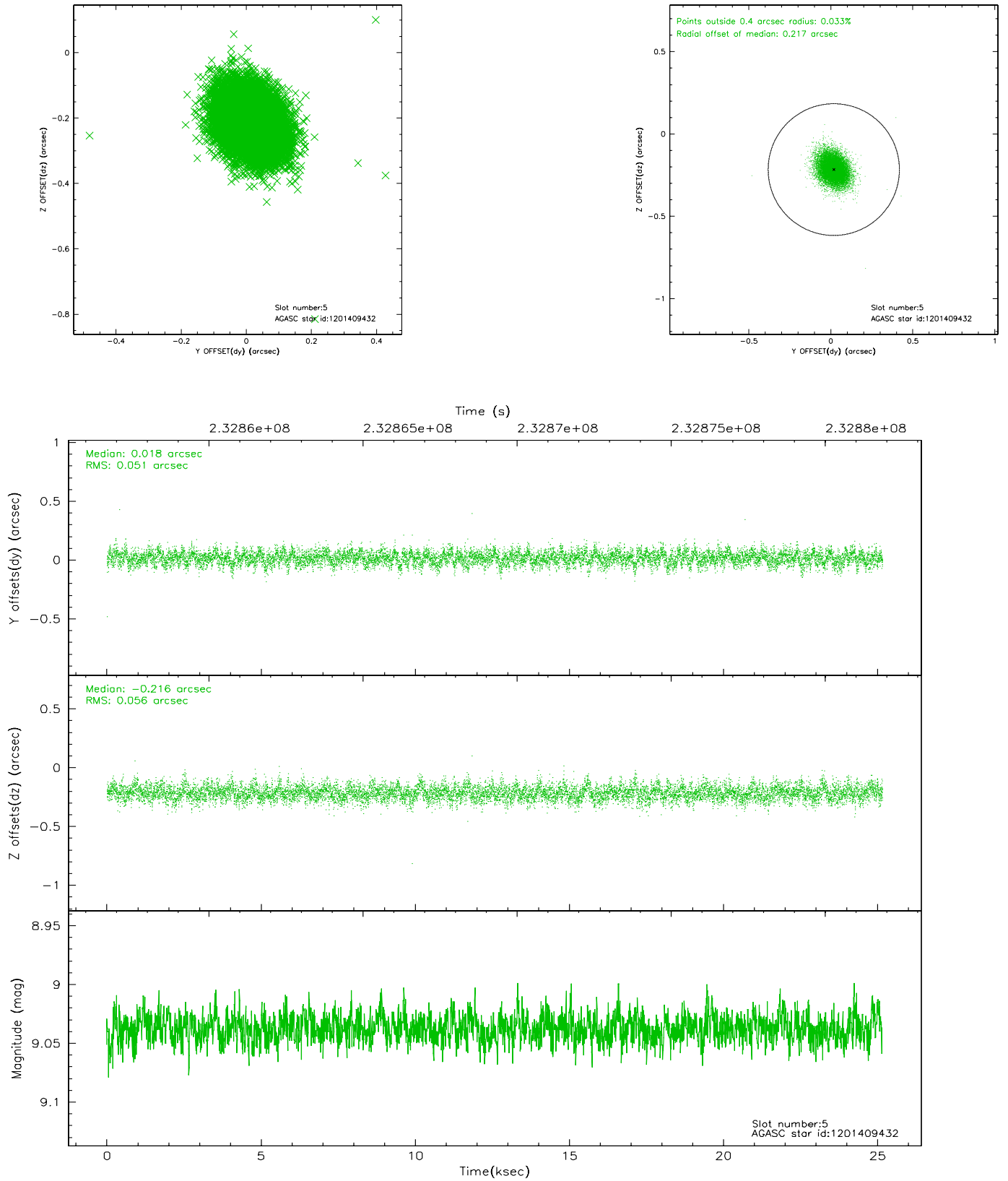
### 2.4.1 Slot 3



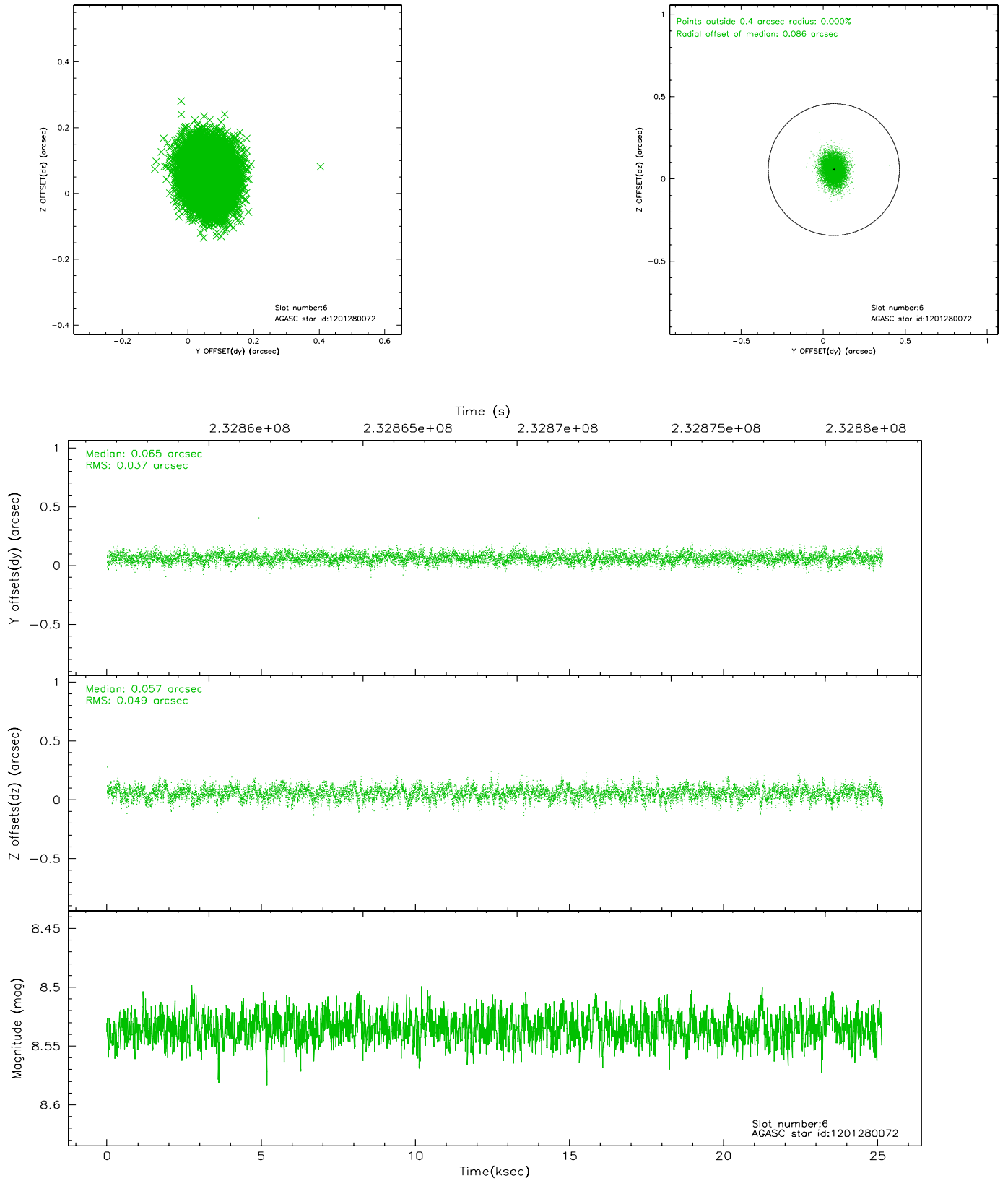
## 2.4.2 Slot 4



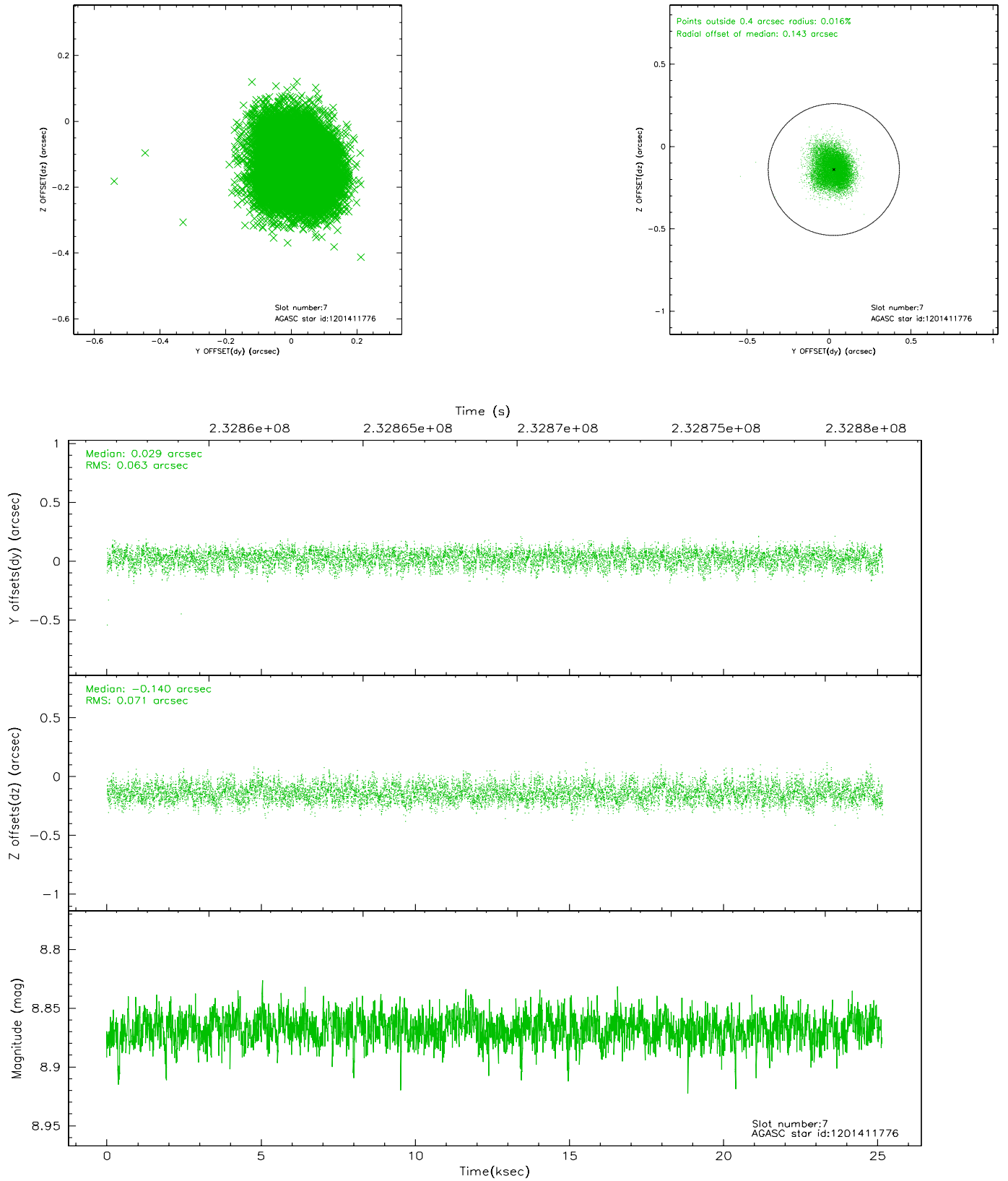
### 2.4.3 Slot 5



## 2.4.4 Slot 6

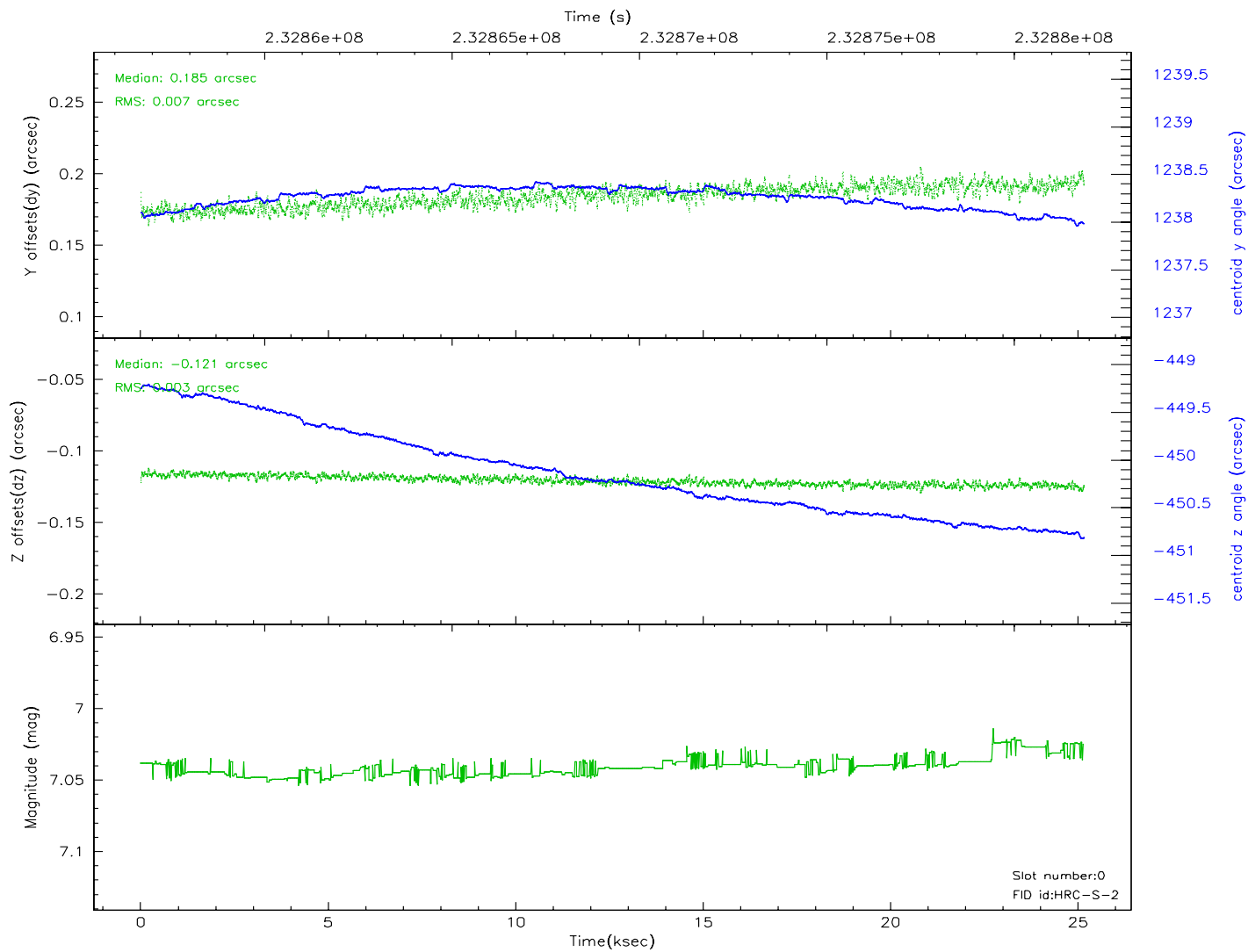
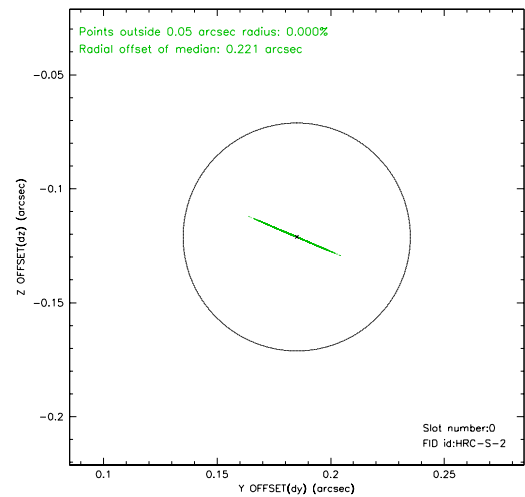
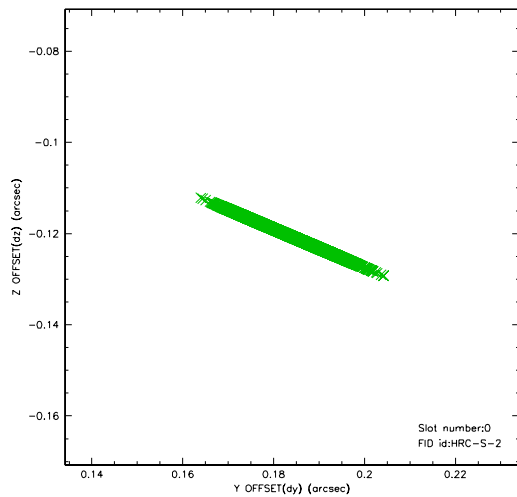


## 2.4.5 Slot 7

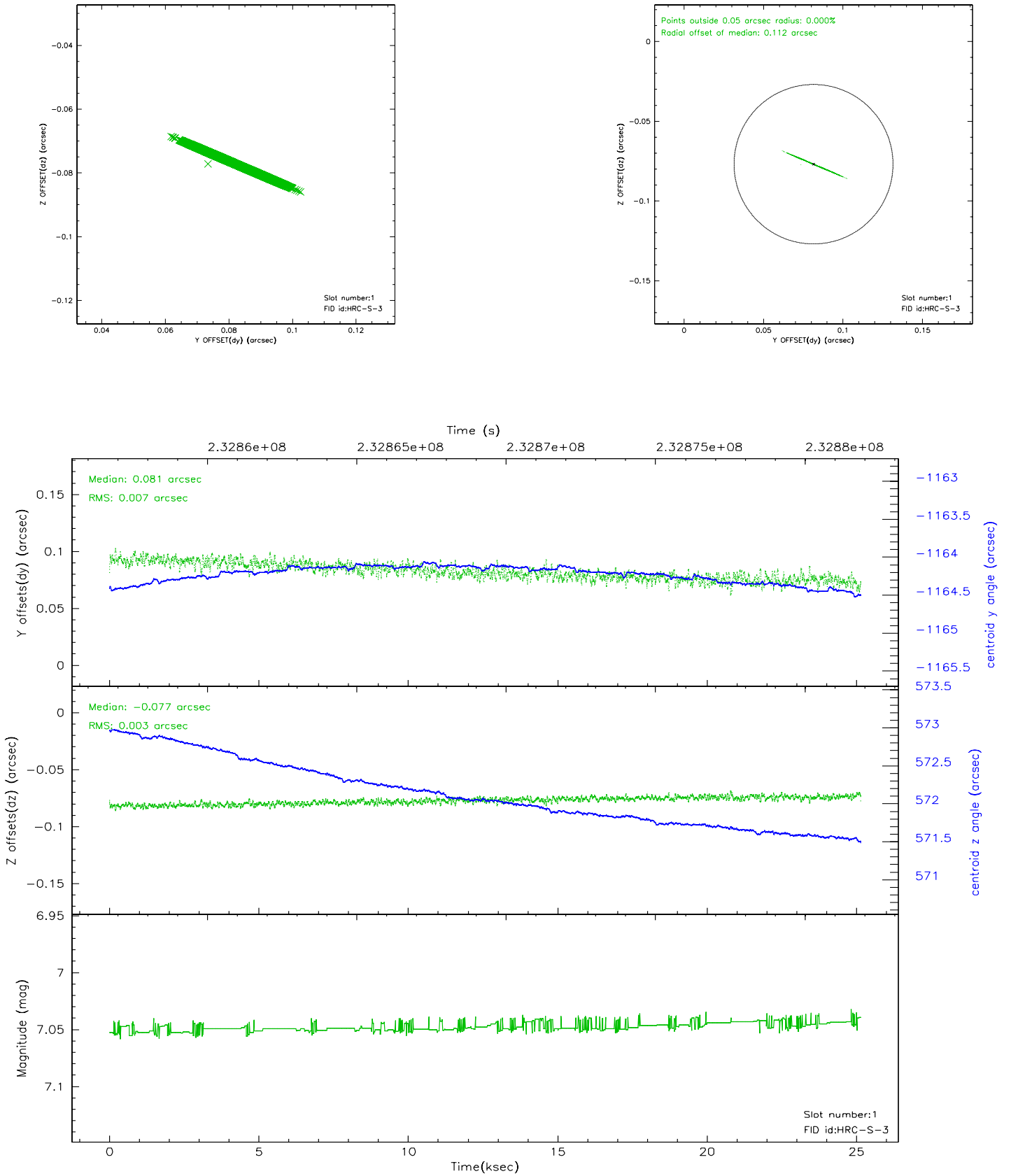


## 2.5 FID Slots

### 2.5.1 Slot 0

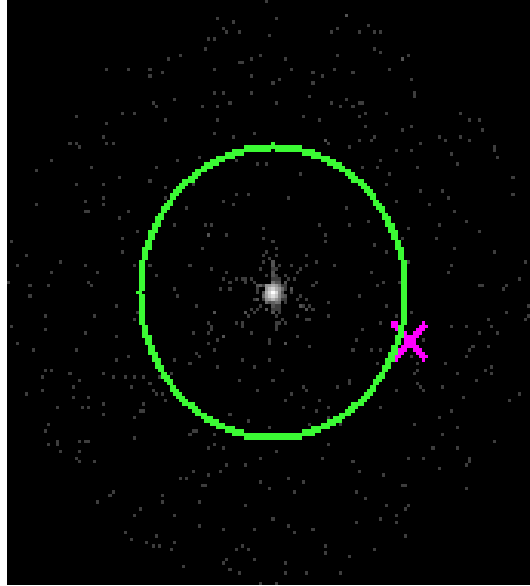


## 2.5.2 Slot 1



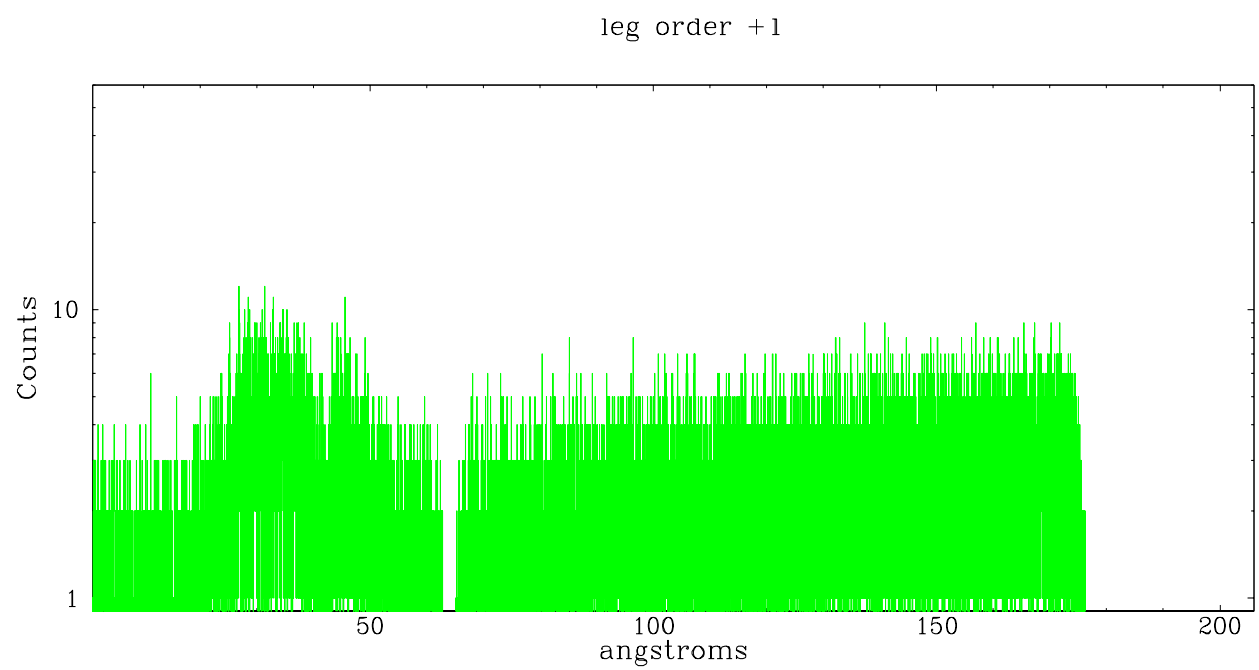
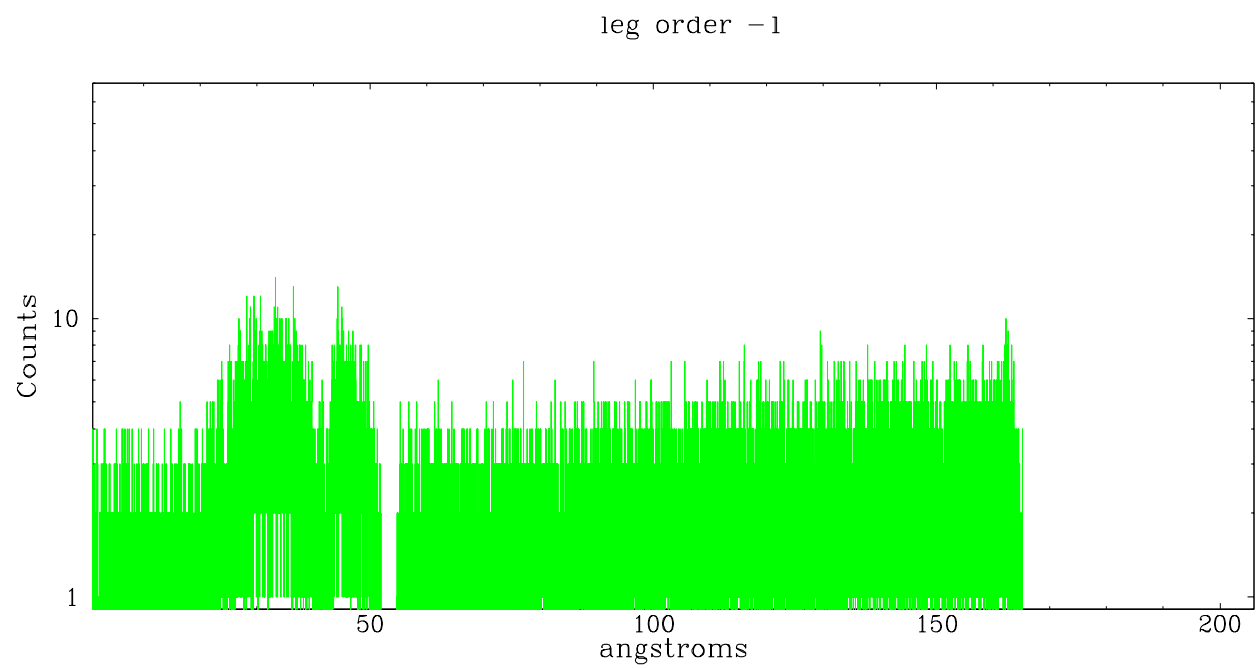
## 3 Gratings

### 3.1 LETG Arm



LETG Zero Order





## A Summary

### A.1 Status

V&V Scientist	Beth Sundheim
V&V Date (YYYY-MM-DD)	2006.03.29
V&V Edition	1
V&V Disposition and Status	OK
V&V Charge Time	25.16093

### A.2 Comments