

# V&V Reference Report

## L2 ASCDS Version : 8.4.5

Observation 54424 - L2 Version 2  
Chandra X-Ray Center

L2 Processing Date : Aug 15 2012

## Contents

<b>1</b>	<b>Front</b>	<b>2</b>
<b>2</b>	<b>OBI</b>	<b>3</b>
2.1	OBI . . . . .	3
2.1.1	Images . . . . .	3
2.1.2	Bias . . . . .	3
2.1.3	Parameters . . . . .	4
2.1.4	Events . . . . .	4
2.2	Compared Parameters . . . . .	5
2.3	Star Slots . . . . .	6
2.4	FID Slots . . . . .	6
<b>A</b>	<b>Summary</b>	<b>7</b>
A.1	Status . . . . .	7
A.2	Comments . . . . .	7

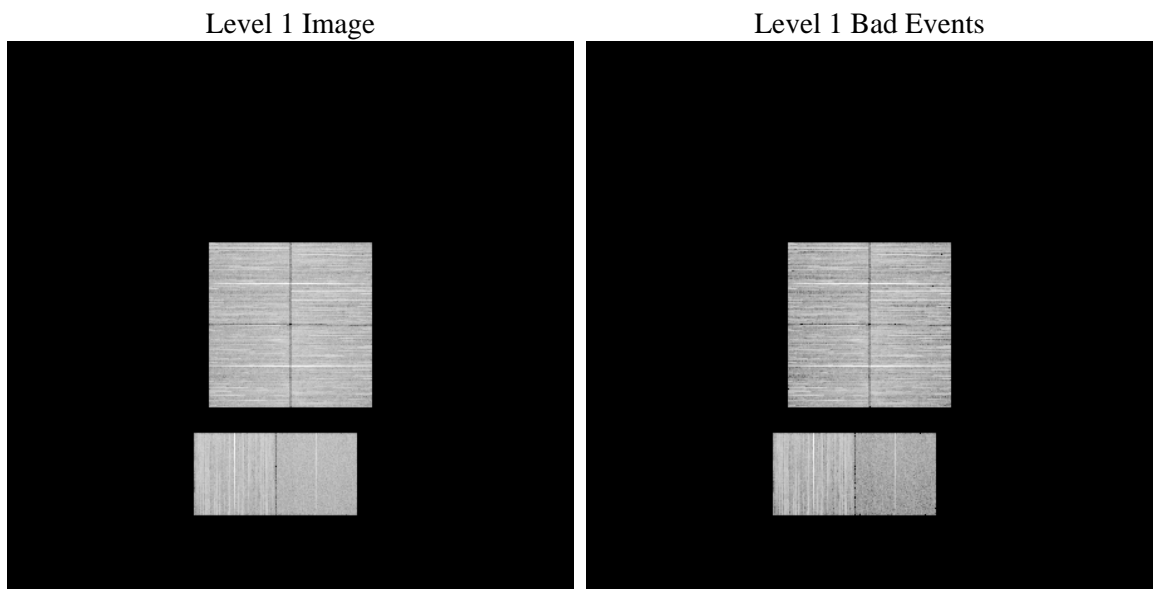
# 1 Front

seq_num	&#160	Sequence number
obs_id	54424	Observation id
title	ACIS-012367 diagnostics	Proposal title
observer	CHANDRA engineering request/realtime commanding	Principal investig
object	&#160	Source name
dtcycle	0	&#160
cycle	P	events from which exps? Prim/Second/Both
ra_targ	0.0	Observer's specified target RA [deg]
dec_targ	0.0	Observer's specified target Dec [deg]
ra_nom	338.97203317514	Nominal RA [deg]
dec_nom	3.0064639581852	Nominal Dec [deg]
roll_nom	134.06272479297	Nominal Roll [deg]
revision	2	Processing version of data
ontime	8287.9999691844	Sum of GTIs [s]
livetime	8183.0523231401	Livetime [s]
ontime0	8287.9999691844	Sum of GTIs [s]
ontime1	8287.9999691844	Sum of GTIs [s]
ontime2	8287.9999691844	Sum of GTIs [s]
ontime3	8287.9999691844	Sum of GTIs [s]
ontime6	8287.9999691844	Sum of GTIs [s]
ontime7	8287.9999691844	Sum of GTIs [s]
l2events	246022	Number of level 2 events

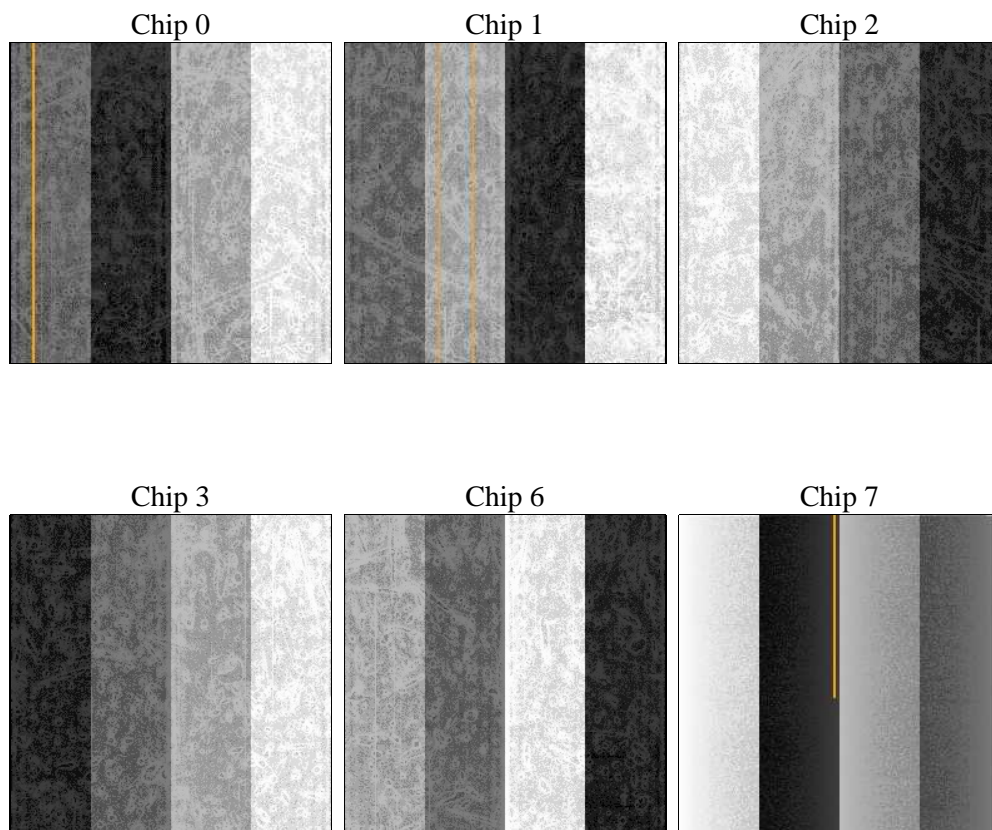
## 2 OBI

### 2.1 OBI

#### 2.1.1 Images



#### 2.1.2 Bias



### 2.1.3 Parameters

obi_num	0	Obi number	sched_exp_time	0.0	[s] Scheduled observation exposure time
ascdsver	8.4.5	Processing system revision	ontime	8287.9999691844	Sum of GTIs [s]
caldsver	4.5.1.1	&#160	ontime0	8287.9999691844	Sum of GTIs [s]
date	2012-08-15T13:27:10	Date and time of file creation	ontime1	8287.9999691844	Sum of GTIs [s]
revision	2	Processing version of data	ontime2	8287.9999691844	Sum of GTIs [s]
			ontime3	8287.9999691844	Sum of GTIs [s]
			ontime6	8287.9999691844	Sum of GTIs [s]
			ontime7	8287.9999691844	Sum of GTIs [s]
			l1events	959206	Number of level 1 events

### 2.1.4 Events

	ccd 0	ccd 1	ccd 2	ccd 3	ccd 6	ccd 7		ccd 0	ccd 1	ccd 2	ccd 3	ccd 6	ccd 7
level 1 events	160429	175664	153700	166555	171080	131778	grade 0 events	19844	18695	20552	20529	19748	10021
rejected events	121935	137033	115152	127154	130671	67291		12%	10%	13%	12%	11%	7%
rejected %	76%	78%	74%	76%	76%	51%	grade 1 events	109	91	115	115	80	63
								0%	0%	0%	0%	0%	0%
							grade 2 events	7627	8522	7255	7563	8630	15801
								4%	4%	4%	4%	5%	11%
							grade 3 events	2481	2498	2597	2652	2501	5342
								1%	1%	1%	1%	1%	4%
							grade 4 events	2523	2470	2504	2688	2528	5200
								1%	1%	1%	1%	1%	3%
							grade 5 events	2980	2850	2740	3283	3024	7509
								1%	1%	1%	1%	1%	5%
							grade 6 events	6019	6464	5661	5969	7021	28123
								3%	3%	3%	3%	4%	21%
							grade 7 events	118846	134074	112276	123756	127548	59719
								74%	76%	73%	74%	74%	45%

## 2.2 Compared Parameters

Parameter	Planned	Actual
Instrument	ACIS	ACIS
Detector	ACIS-012367	ACIS-012367
Grating	NONE	NONE
Data mode	FAINT	FAINT
Observation mode	SECONDARY	SECONDARY
[deg] Pointing RA	0	338.9720331751373
[deg] Pointing Dec	0	3.006463958185178
[deg] Pointing Roll	0.0	134.0627247929715
[mm] SIM focus pos	-1.429586	-1.428180813131781
[mm] SIM defocus	0.1037507710433287	0.1051558262725154
[mm] SIM translation stage pos	250.455976	250.466033080201
[mm] SIM translation stage offset	0	-0.01005468664627074
[s] Observation start time (MET)	460824214.05439	460824213.02939
Observation start date	2012-08-08T14:43:34	2012-08-08T14:43:33
[s] Observation end time (MET)	460838428.75515	460838427.73015
Observation end date	2012-08-08T18:40:29	2012-08-08T18:40:27
Read mode	TIMED	TIMED

Parameter	Planned	Actual
Obspar format version number	7	7
Obspar file type	PREDICTED	ACTUAL
Obspar update status	NONE	UPDATED
Number of optional ACIS chips dropped	0	0
On-chip summing requested	N	N
Subarray requested	NONE	NONE
Alternating exposures requested	N	N
[s] Primary exposure time	3.2	3.2

## **2.3 Star Slots**

## **2.4 FID Slots**

## A Summary

### A.1 Status

V&V Scientist	Jen Lauer
V&V Date (YYYY-MM-DD)	2012.08.22
V&V Edition	1
V&V Disposition and Status	OK
V&V Charge Time	8.2879999691844

### A.2 Comments