

V&V Reference Report

L2 ASCDS Version : 7.6.7.2

Observation 5364 - L2 Version 001
Chandra X-Ray Center

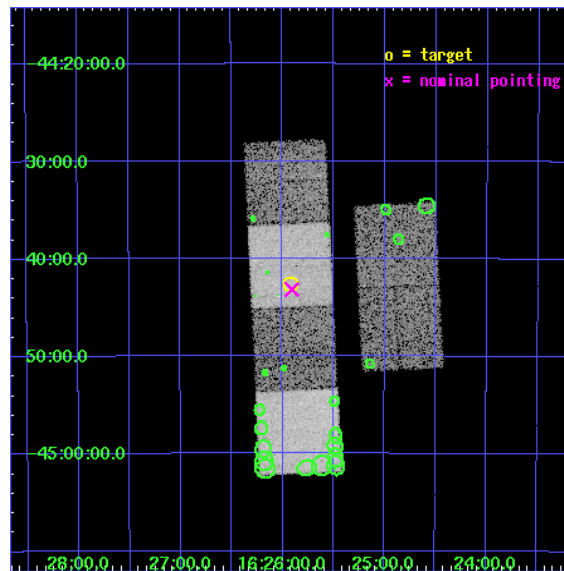
L2 Processing Date : Apr 24 2006

Contents

1	Front	2
2	OBI	3
2.1	OBI	3
2.1.1	Images	3
2.1.2	Bias	3
2.1.3	Parameters	4
2.1.4	Events	4
2.2	Compared Parameters	5
2.3	Aspect	6
2.4	Star Slots	9
2.4.1	Slot 3	9
2.4.2	Slot 4	10
2.4.3	Slot 5	11
2.4.4	Slot 6	12
2.4.5	Slot 7	13
2.5	FID Slots	14
2.5.1	Slot 0	14
2.5.2	Slot 1	15
2.5.3	Slot 2	16
3	Point Sources	17
A	Summary	18
A.1	Status	18
A.2	Comments	18

1 Front

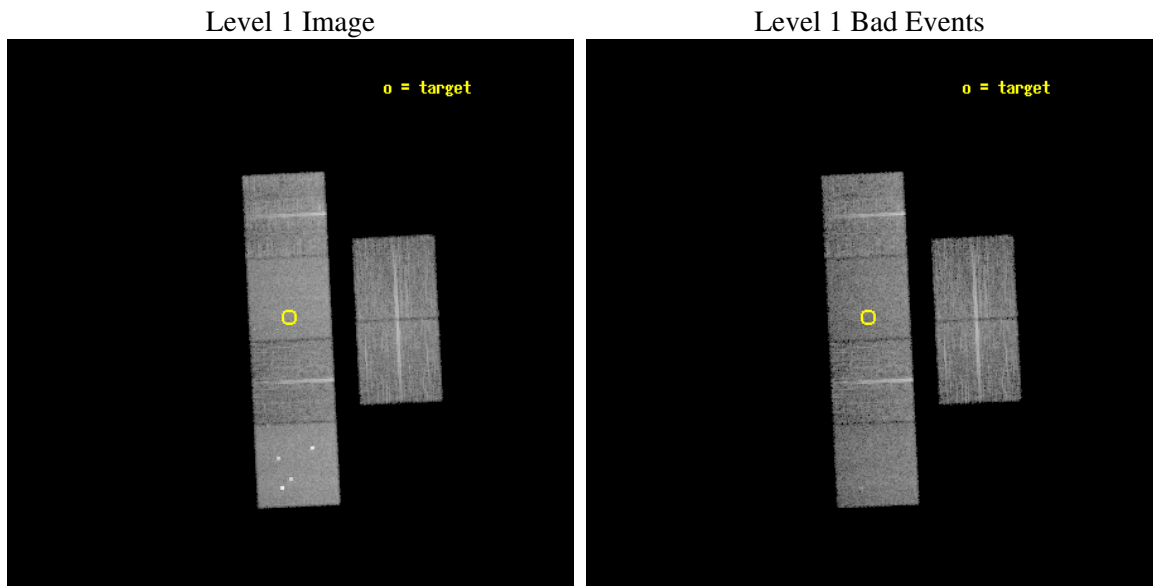
seq_num	500507
obs_id	5364
title	Observations of an extremely X-ray rich GRB detected by Integral
observer	Dr Chryssa Kouveliotou
object	GRB 040812
dtcycle	0
cycle	P
ra_targ	246.48
dec_targ	-44.71
ra_nom	246.47695782838
dec_nom	-44.719388908412
roll_nom	267.18815856667
revision	2
ontime	10175.999962091
livetime	10047.14532332
ontime2	10175.999962091
ontime3	10166.277061075
ontime5	10175.999962091
ontime6	10175.999962091
ontime7	10175.999962091
ontime8	10169.517981619
l2events	114843



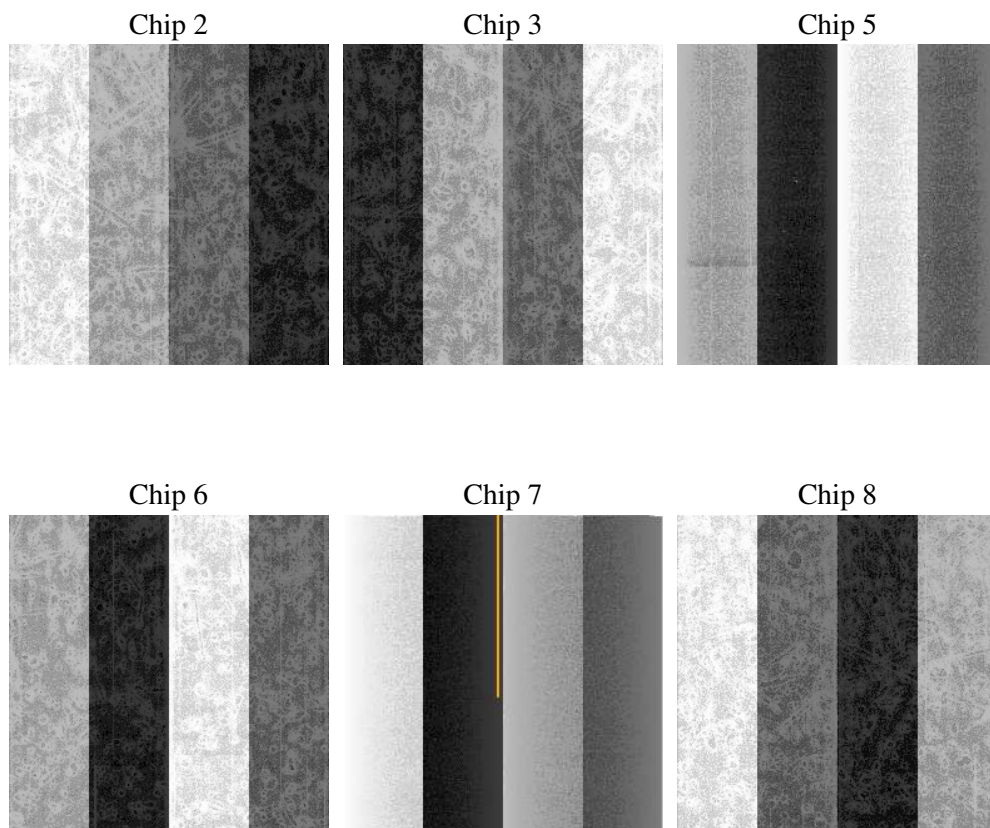
2 OBI

2.1 OBI

2.1.1 Images



2.1.2 Bias



2.1.3 Parameters

obi_num	0
ascdsver	7.6.7.2
caldbver	3.2.1
date	2006-04-25T00:24:38
revision	2

sched_exp_time	10000.000000
ontime	10617.540042579
ontime2	10617.540042579
ontime3	10611.058161646
ontime5	10620.781062663
ontime6	10620.781062663
ontime7	10617.540042579
ontime8	10614.29908219
l1events	553294

2.1.4 Events

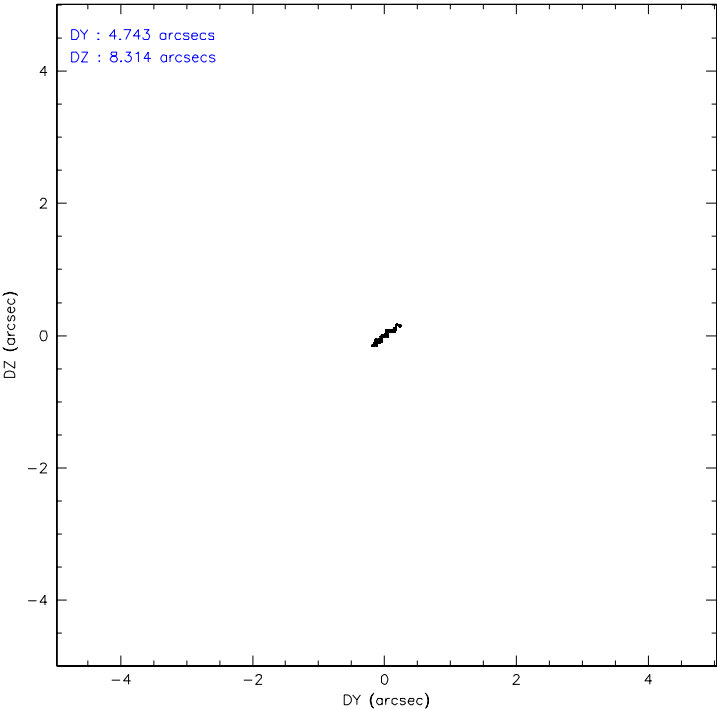
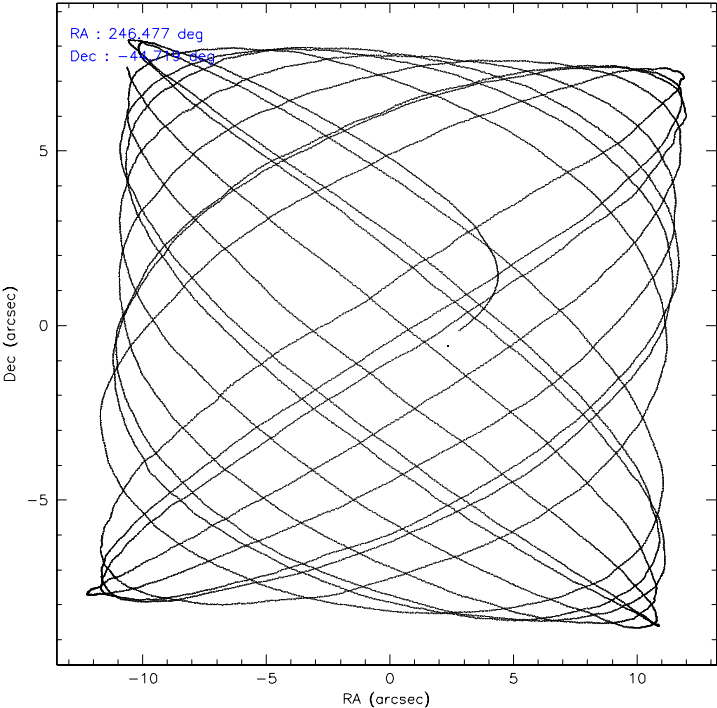
	ccd 2	ccd 3	ccd 5	ccd 6	ccd 7	ccd 8
level 1 events	81225	76766	117898	76474	104884	96047
rejected events	72178	67926	65026	67498	66958	76065
rejected %	88%	88%	55%	88%	63%	79%

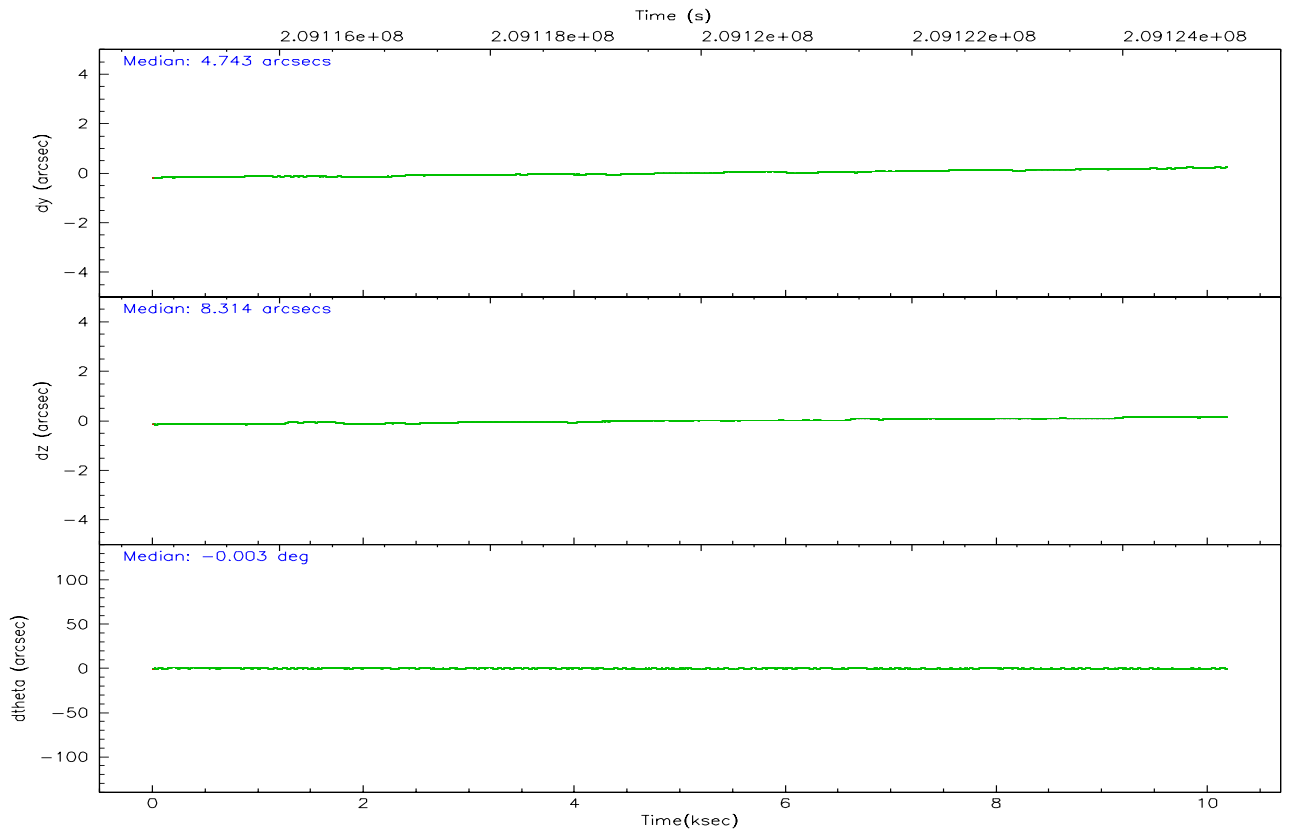
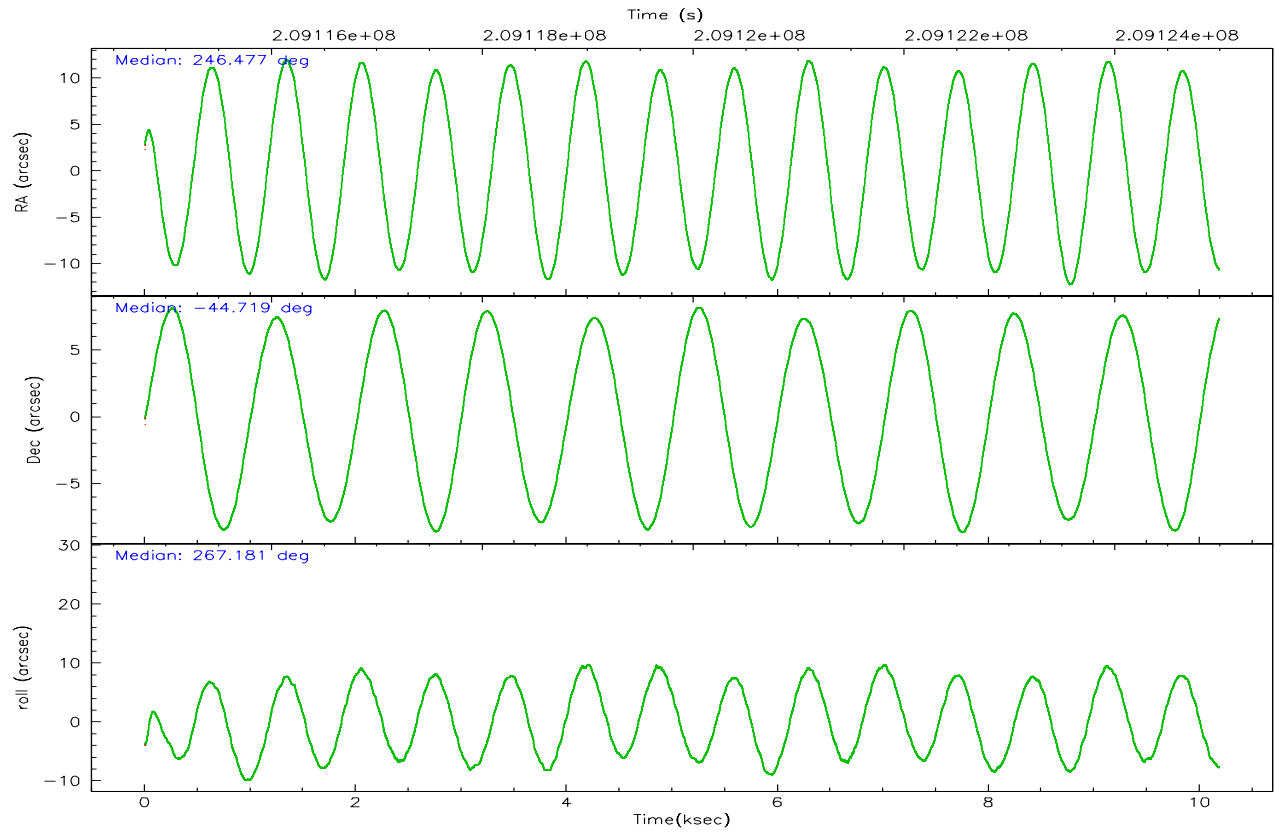
	ccd 2	ccd 3	ccd 5	ccd 6	ccd 7	ccd 8
grade 0 events	4204	4191	7226	3784	2196	6763
	5%	5%	6%	4%	2%	7%
grade 1 events	46	29	200	35	44	67
	0%	0%	0%	0%	0%	0%
grade 2 events	1896	1745	17016	1977	9961	4608
	2%	2%	14%	2%	9%	4%
grade 3 events	837	863	1138	845	2016	2188
	1%	1%	0%	1%	1%	2%
grade 4 events	873	868	1099	855	1851	2100
	1%	1%	0%	1%	1%	2%
grade 5 events	3050	3229	5319	3473	6838	4532
	3%	4%	4%	4%	6%	4%
grade 6 events	1623	1579	28640	1895	23467	5280
	1%	2%	24%	2%	22%	5%
grade 7 events	68696	64262	57260	63610	58511	70509
	84%	83%	48%	83%	55%	73%

2.2 Compared Parameters

Parameter	Planned	Actual	Parameter	Planned	Actual
Instrument	ACIS	ACIS	Obspar format version number	6	6
Detector	ACIS-235678	ACIS-235678	Obspar file type	PREDICTED	ACTUAL
Grating	NONE	NONE	Obspar update status	NONE	UPDATED
Data mode	FAINT	FAINT	On-chip summing requested	N	N
Observation mode	POINTING	POINTING	Subarray requested	NONE	NONE
Pointing RA	246.458992	246.4769578283849	Alternating exposures requested	N	N
Pointing Dec	-44.695375	-44.71938890841176	Primary exposure time	0.000000	3.2
Pointing Roll	267.018899	267.188158566666			
SIM focus pos (mm)	-0.684267	-0.6828225247311905			
SIM defocus (mm)	0	0.001444936568705701			
SIM translation stage pos (mm)	-190.132523	-190.1400660498719			
SIM translation stage offset (mm)	0	0.00754346686406393			
Observation start time	209114992.184000	209113702.53298			
Observation start date	2004-08-17T07:28:48	2004-08-17T07:08:22			
Observation end time	209124992.184000	209125831.35852			
Observation end date	2004-08-17T10:15:28	2004-08-17T10:30:31			
Read mode	TIMED	TIMED			

2.3 Aspect



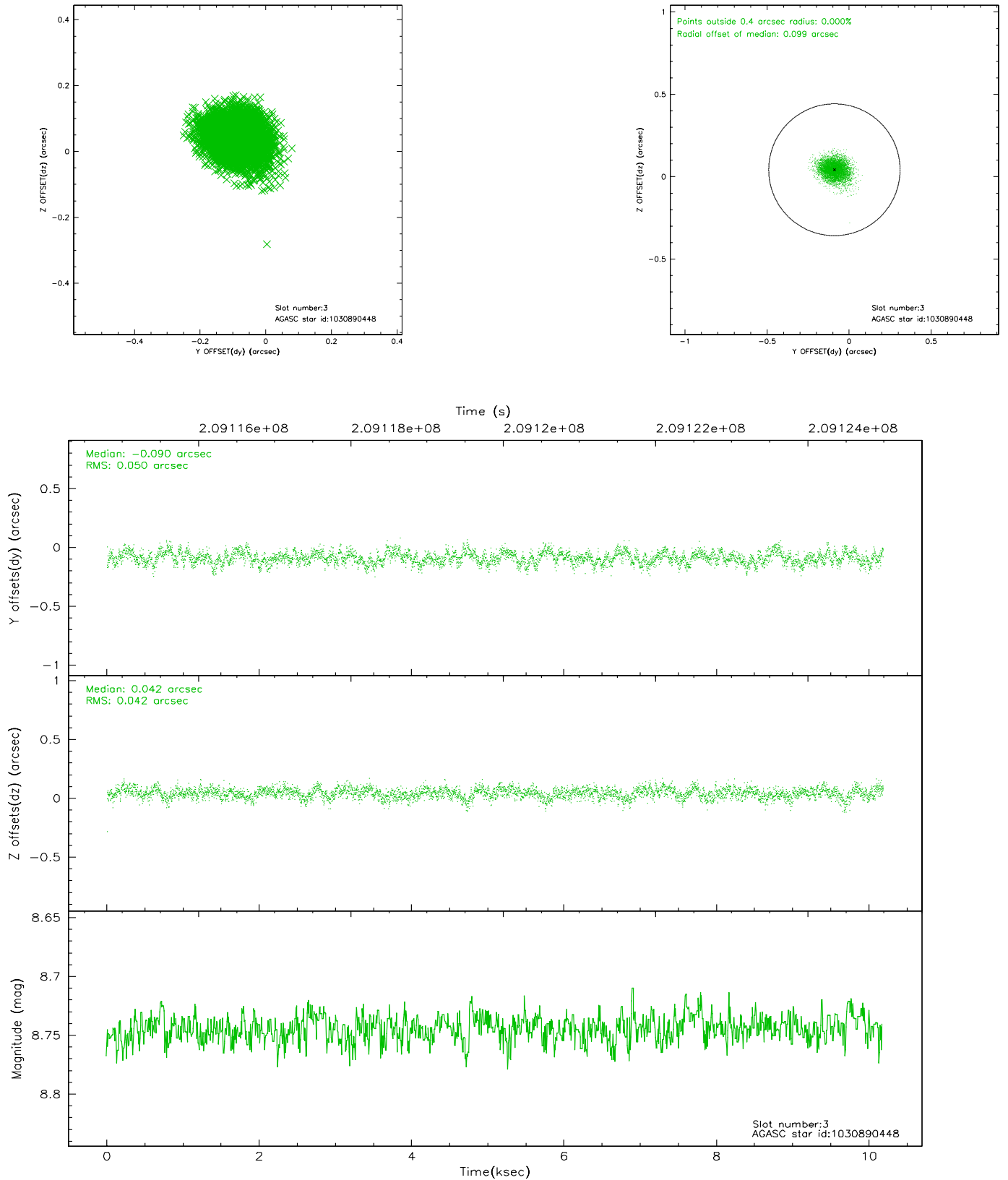


Slot Statistics

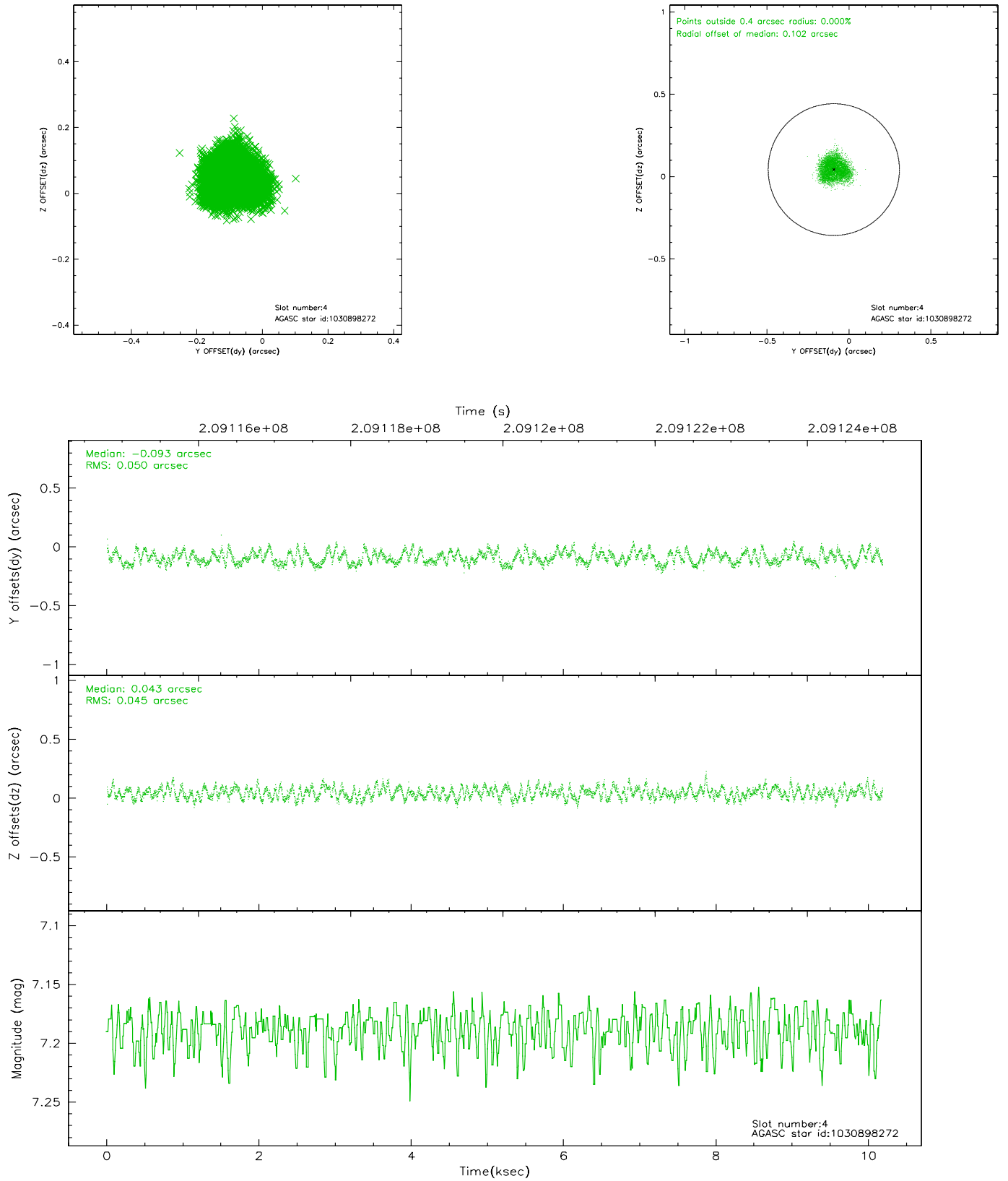
slot	status	id	mag	n_pts	med_dy	med_dz	dr1	dr2	ra	dec	mean_y	mean_z
0	FID	ACIS-S-2	7.11	2485	-0.030	-0.036	0.008	0.013	0.000000	0.000000	-757.49	-1729.54
1	FID	ACIS-S-4	7.20	2485	0.072	0.024	0.006	0.011	0.000000	0.000000	2155.68	178.44
2	FID	ACIS-S-5	7.23	2484	-0.073	0.020	0.006	0.010	0.000000	0.000000	-1809.69	172.73
3	GUIDE	1030890448	8.74	4965	-0.090	0.042	0.069	0.113	246.960720	-44.309948	-1448.88	1218.60
4	GUIDE	1030898272	7.19	4969	-0.093	0.043	0.073	0.108	247.207863	-44.812617	330.50	1932.62
5	GUIDE	1089478400	7.90	4966	0.129	-0.089	0.064	0.101	246.169044	-45.180500	1784.24	-643.41
6	GUIDE	1089481136	8.06	4968	0.059	0.045	0.060	0.098	247.200676	-45.033759	1127.50	1948.17
7	GUIDE	1089502312	6.72	4968	-0.012	-0.037	0.064	0.097	246.225648	-45.349496	2383.84	-466.37

2.4 Star Slots

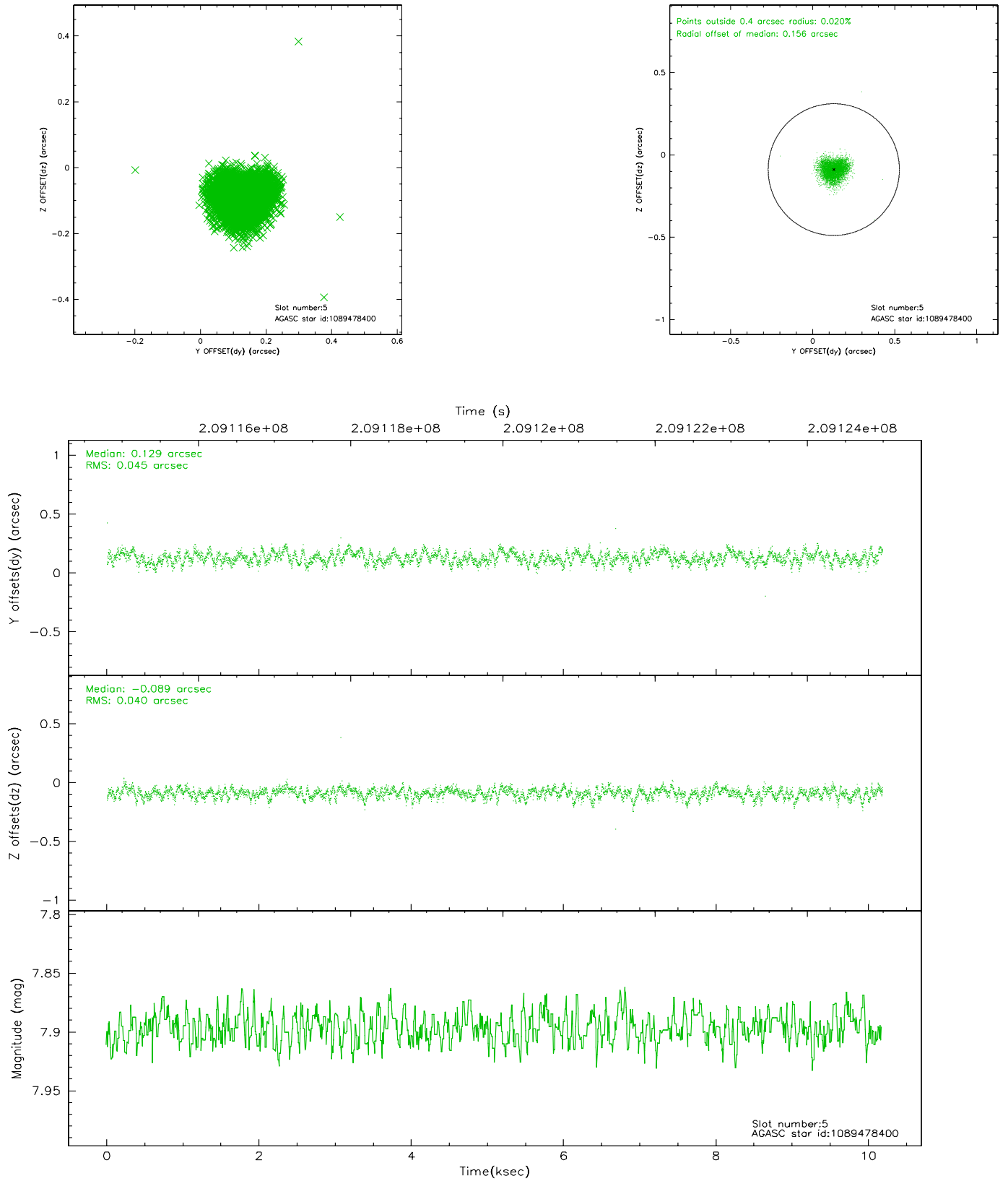
2.4.1 Slot 3



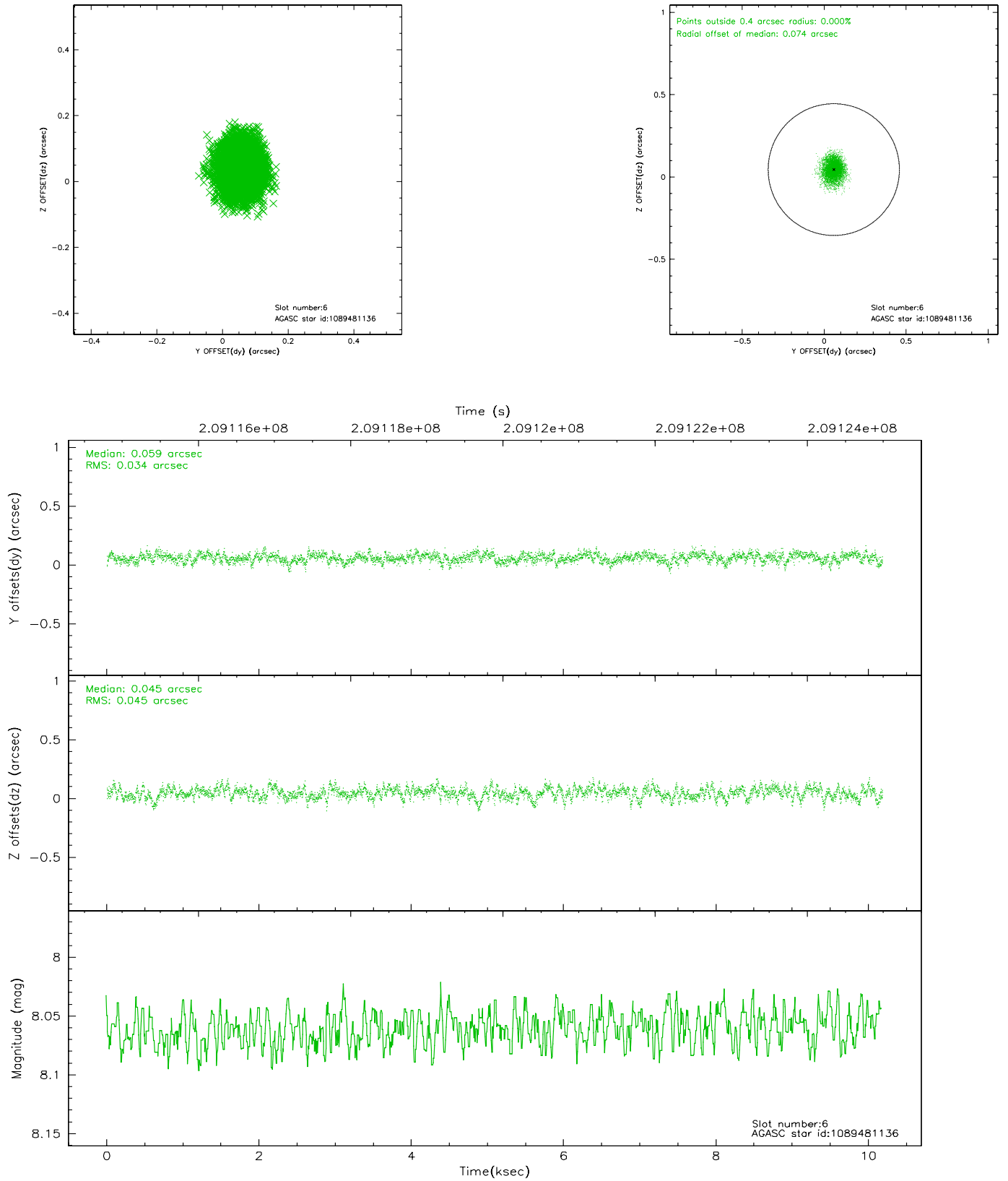
2.4.2 Slot 4



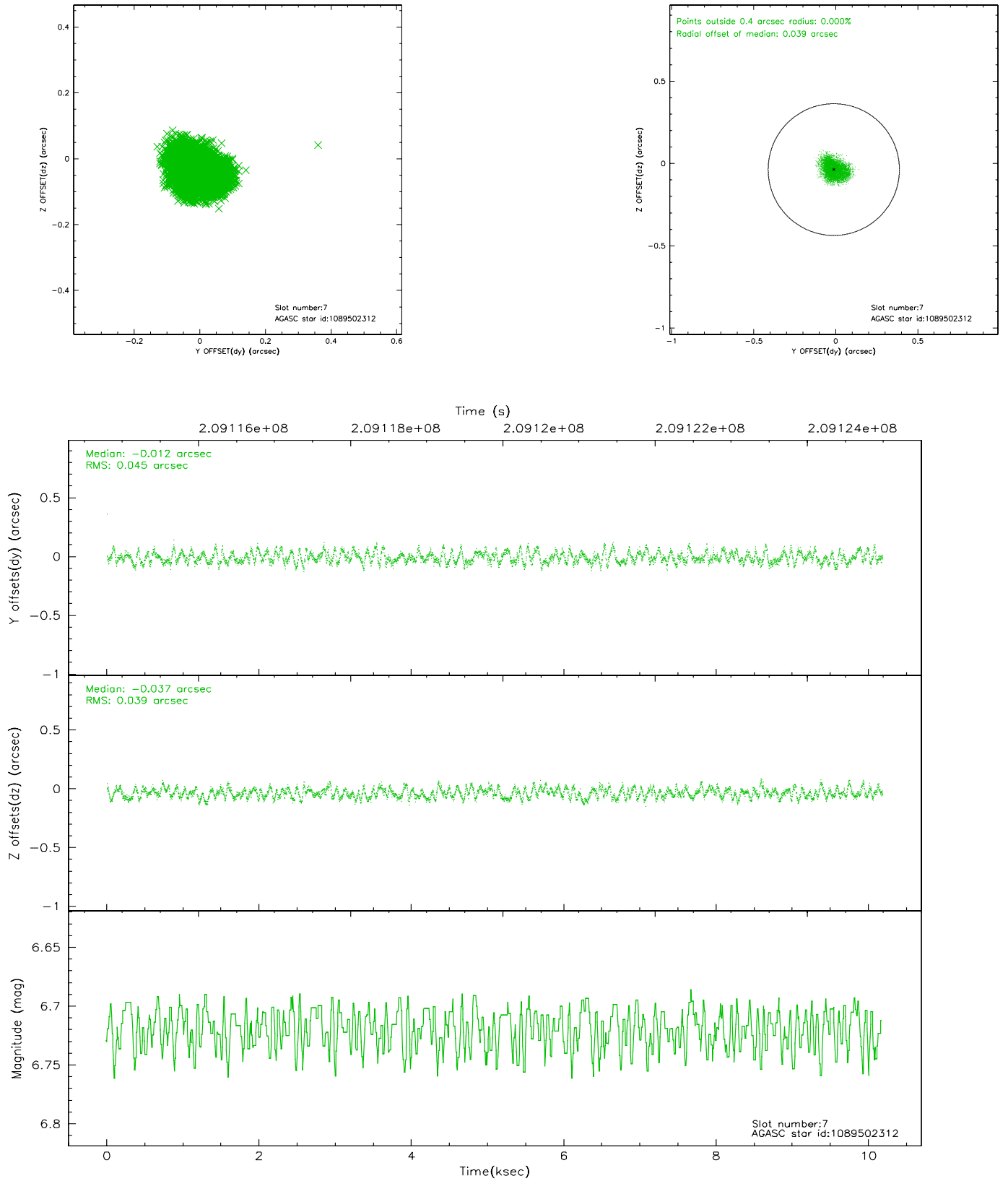
2.4.3 Slot 5



2.4.4 Slot 6

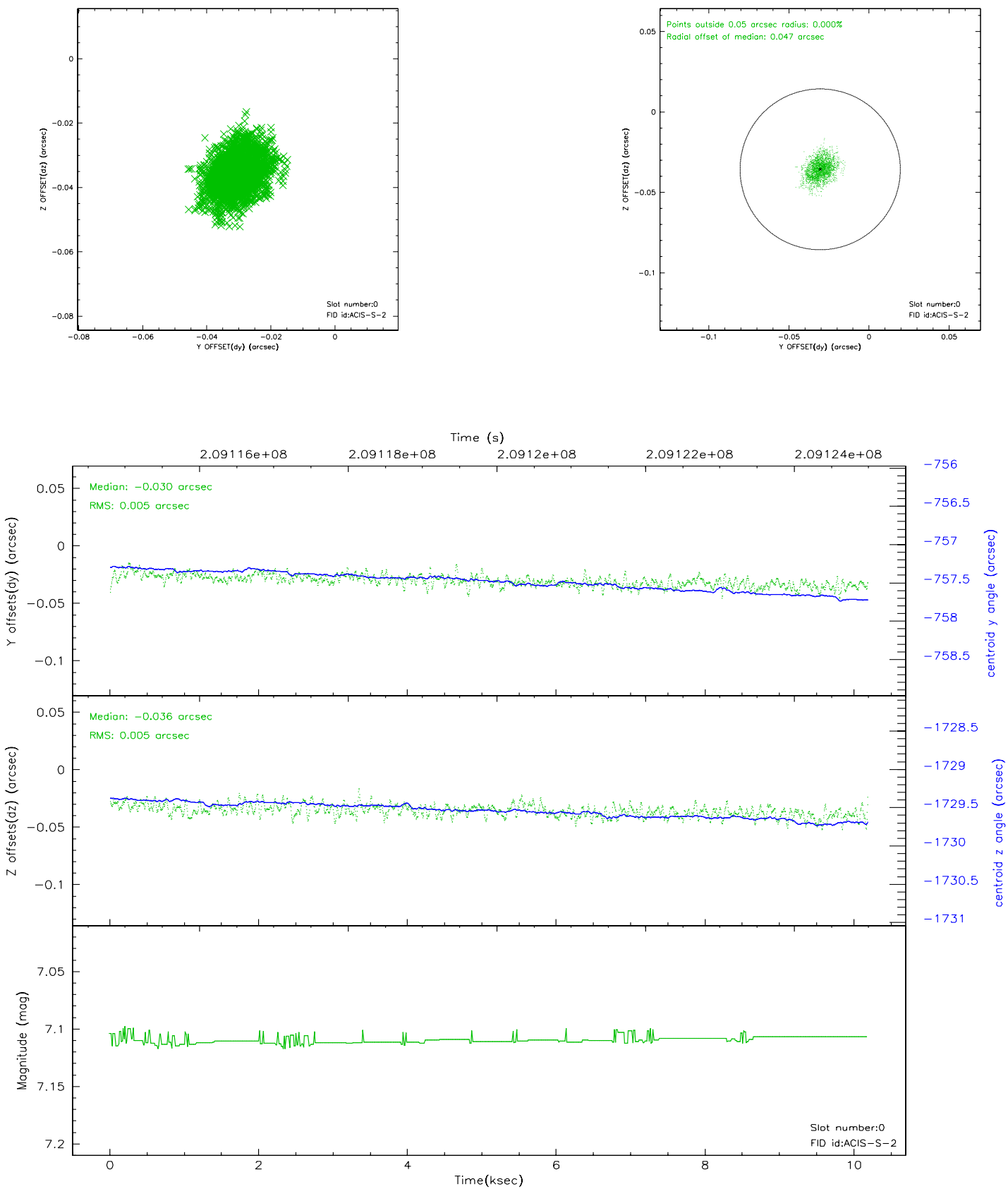


2.4.5 Slot 7

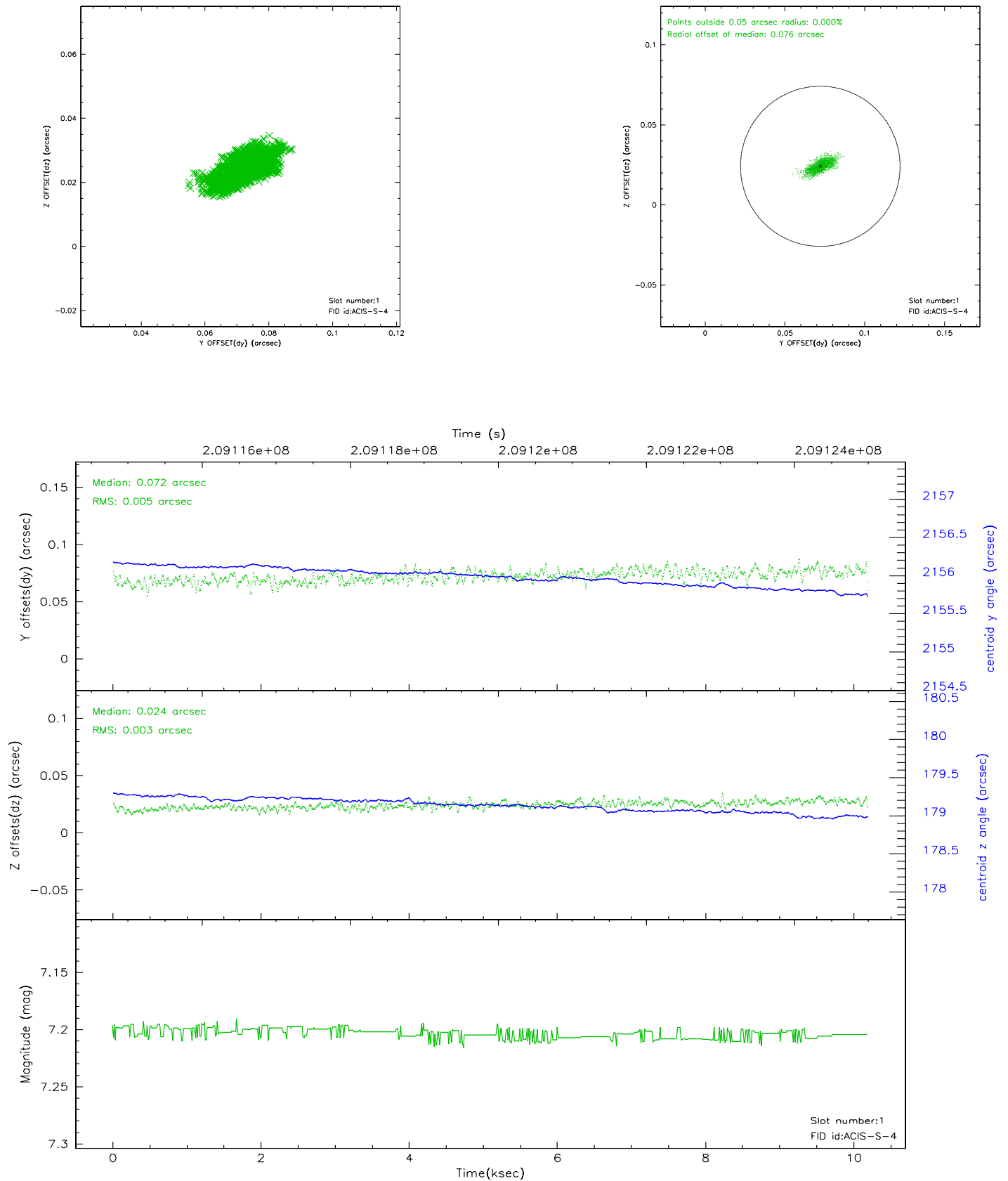


2.5 FID Slots

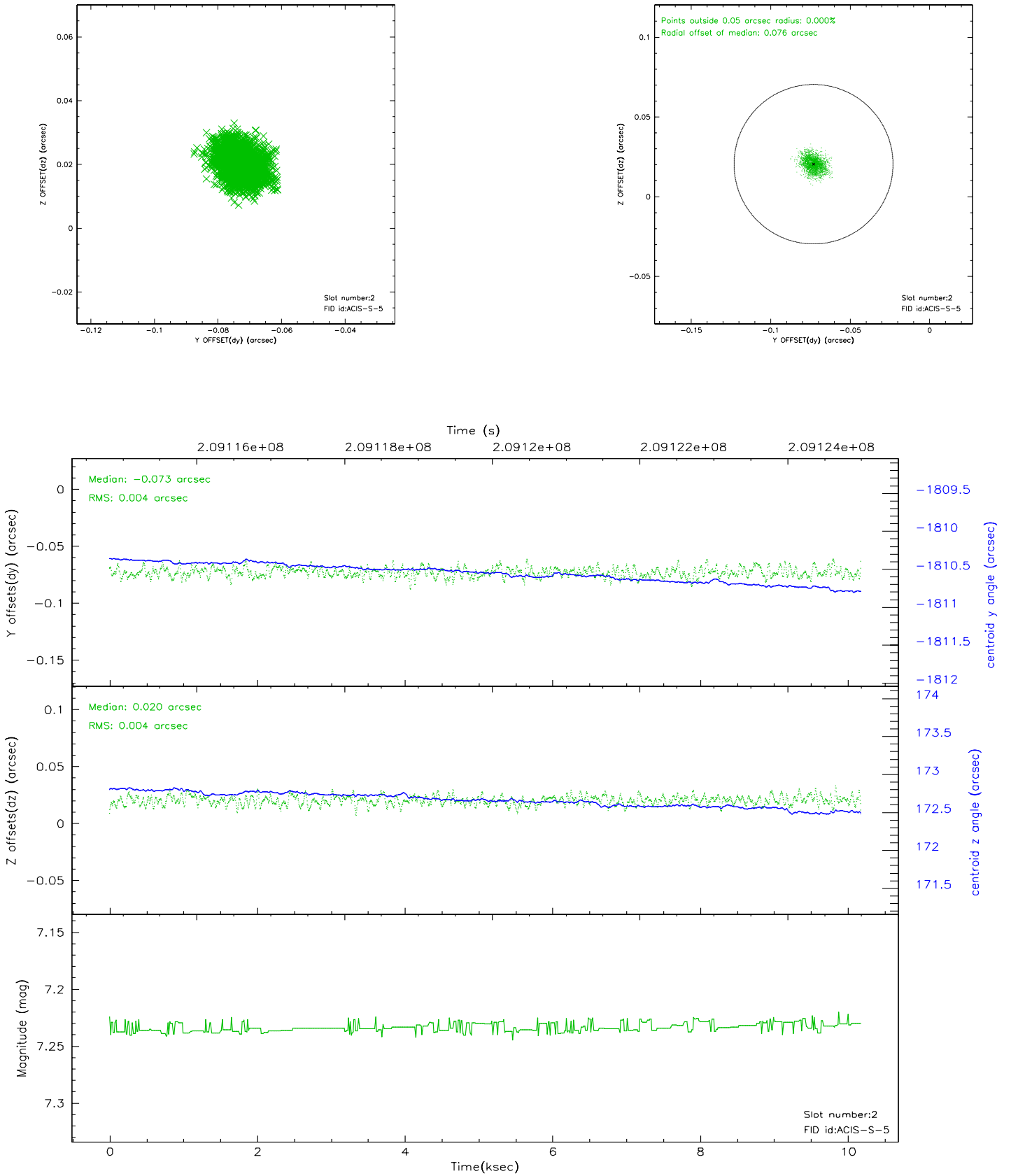
2.5.1 Slot 0



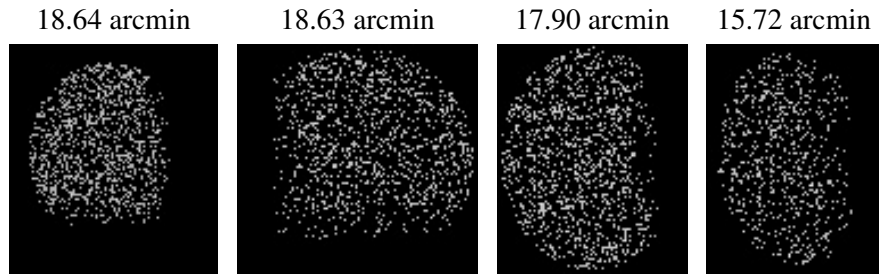
2.5.2 Slot 1



2.5.3 Slot 2



3 Point Sources



A Summary

A.1 Status

V&V Scientist	Jen Lauer
V&V Date (YYYY-MM-DD)	2006.04.25
V&V Edition	1
V&V Disposition and Status	OK
V&V Charge Time	10.175

A.2 Comments