

V&V Reference Report

L2 ASCDS Version : 8.4.5

Observation 534 - L2 Version 3
Chandra X-Ray Center

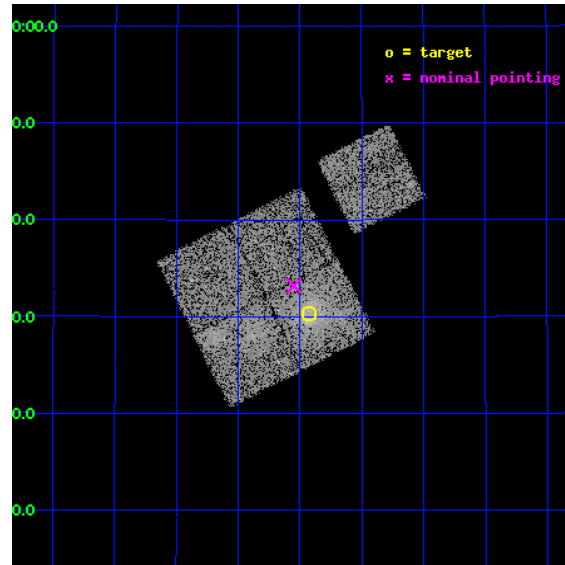
L2 Processing Date : Sep 5 2012

Contents

1	Front	2
2	OBI	3
2.1	OBI	3
2.1.1	Images	3
2.1.2	Bias	3
2.1.3	Parameters	4
2.1.4	Events	4
2.2	Compared Parameters	5
2.3	Aspect	6
2.4	Star Slots	9
2.4.1	Slot 3	9
2.4.2	Slot 4	10
2.4.3	Slot 5	11
2.4.4	Slot 6	12
2.4.5	Slot 7	13
2.5	FID Slots	14
2.5.1	Slot 0	14
2.5.2	Slot 1	15
2.5.3	Slot 2	16
A	Summary	17
A.1	Status	17
A.2	Comments	17

1 Front

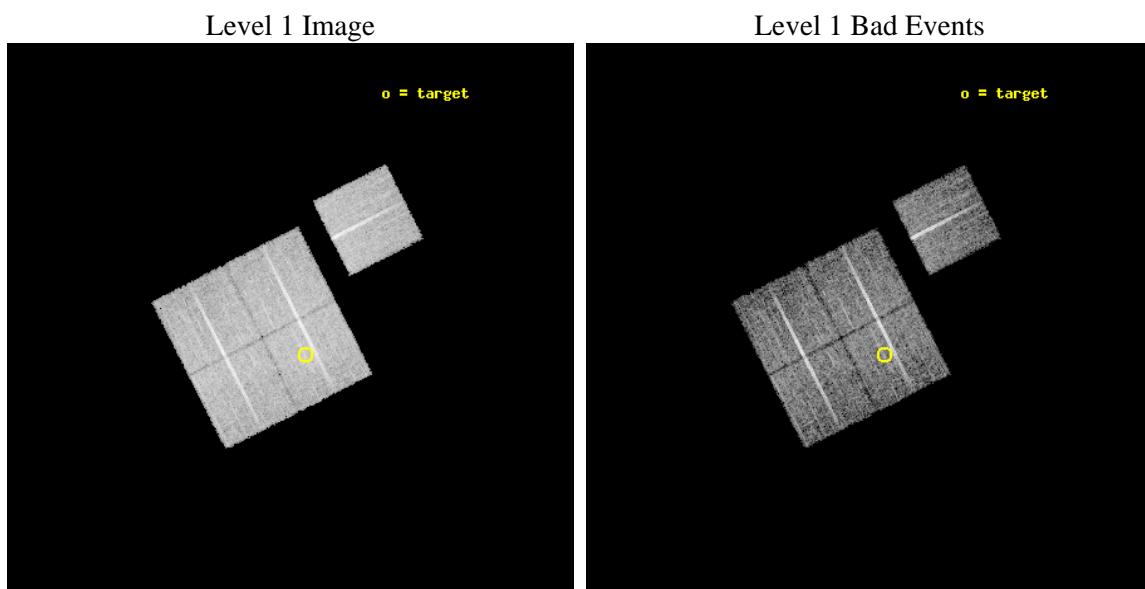
seq_num	800042	Sequence number
obs_id	534	Observation id
title	DETERMINATION OF H0/Q0	Proposal title
observer	DR. LEON VANSPEYBROECK	Principal investigator
object	A781	Source name
dtcycle	0	
cycle	P	events from which exps? Prim/Second/Both
ra_targ	140.106879	Observer's specified target RA [deg]
dec_targ	30.505486	Observer's specified target Dec [deg]
ra_nom	140.13768412682	Nominal RA [deg]
dec_nom	30.553051923985	Nominal Dec [deg]
roll_nom	62.999925307838	Nominal Roll [deg]
revision	3	Processing version of data
ontime	10069.697428495	Sum of GTIs [s]
livetime	9942.1888564112	Livetime [s]
ontime0	10072.81530866	Sum of GTIs [s]
ontime1	10072.856348649	Sum of GTIs [s]
ontime2	10072.897388652	Sum of GTIs [s]
ontime3	10069.697428495	Sum of GTIs [s]
ontime6	10072.774268657	Sum of GTIs [s]
l2events	34845	Number of level 2 events



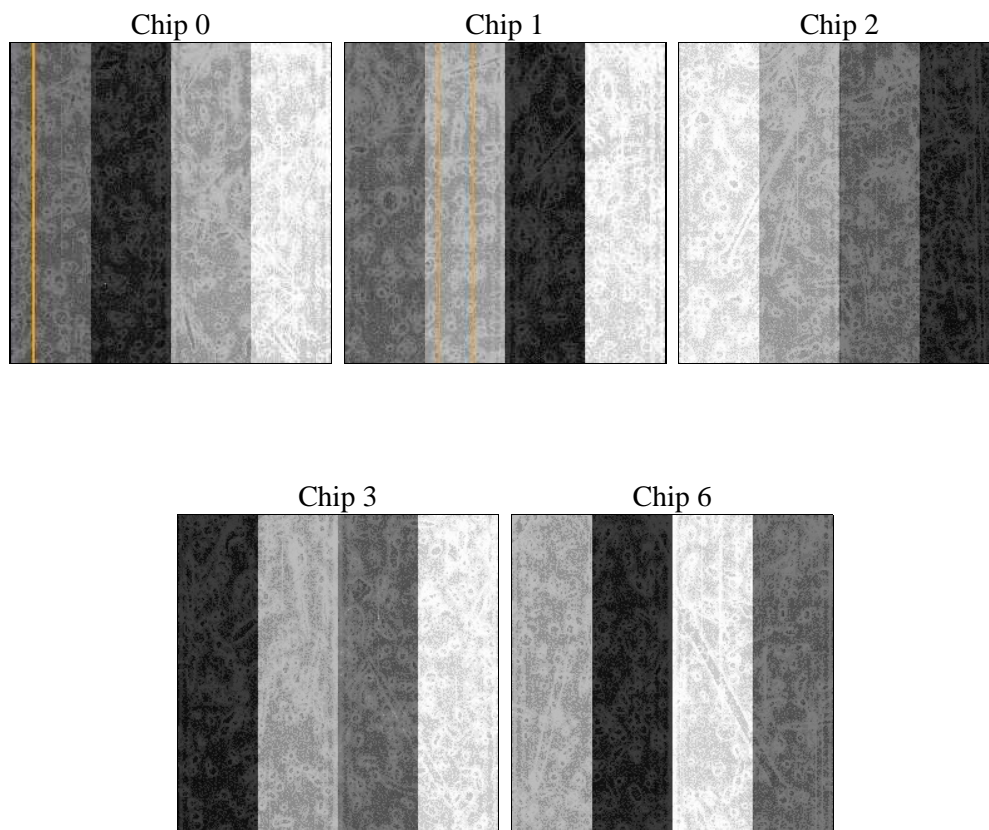
2 OBI

2.1 OBI

2.1.1 Images



2.1.2 Bias



2.1.3 Parameters

obi_num	0	Obi number	sched_exp_time	10300.000000	[s] Scheduled observation exposure time
ascdsver	8.4.5	Processing system revision	ontime	10069.697428495	Sum of GTIs [s]
caldsver	4.5.1.1	 	ontime0	10072.81530866	Sum of GTIs [s]
date	2012-09-05T15:06:42	Date and time of file creation	ontime1	10072.856348649	Sum of GTIs [s]
revision	3	Processing version of data	ontime2	10072.897388652	Sum of GTIs [s]
			ontime3	10069.697428495	Sum of GTIs [s]
			ontime6	10072.774268657	Sum of GTIs [s]
			l1events	294896	Number of level 1 events

2.1.4 Events

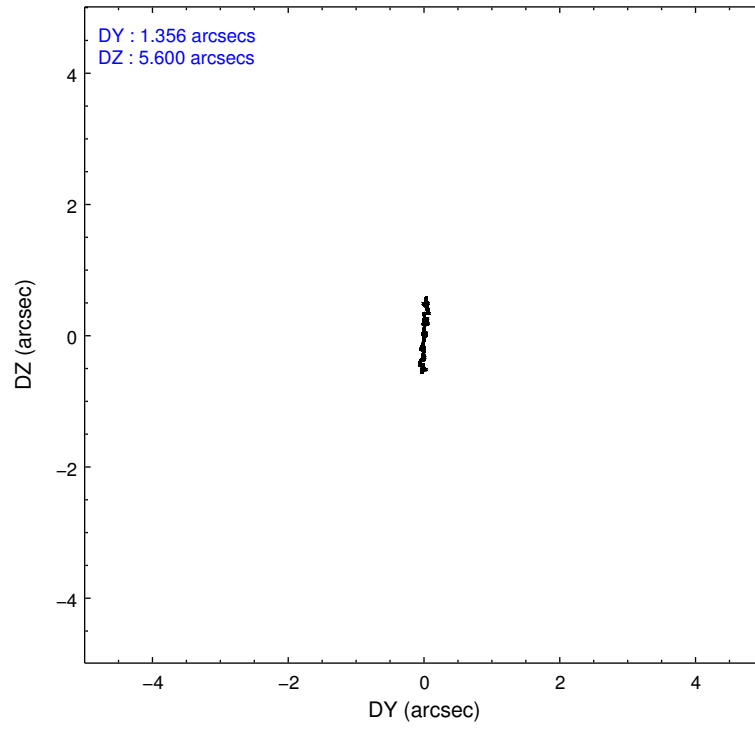
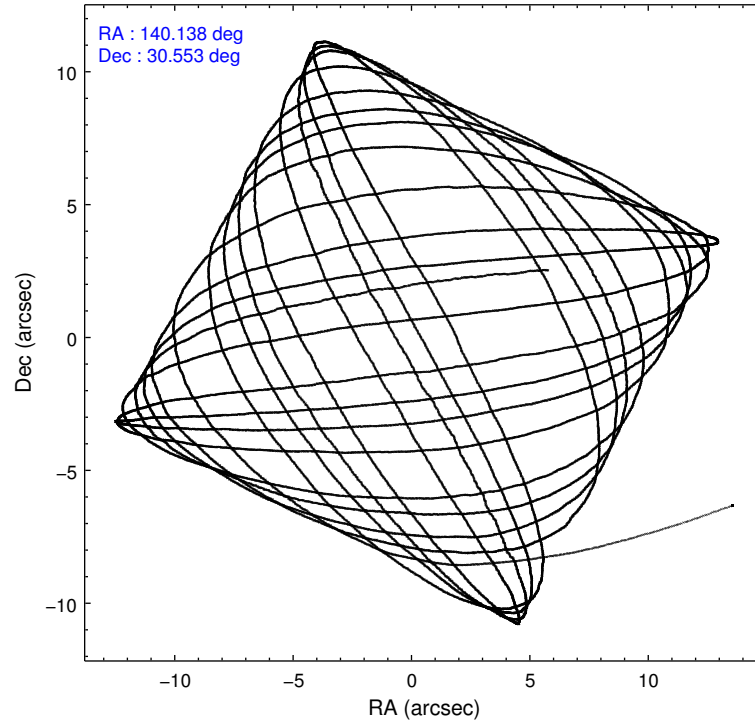
	ccd 0	ccd 1	ccd 2	ccd 3	ccd 6
level 1 events	55921	57702	58910	63617	58746
rejected events	48737	49002	51982	53308	51900
rejected %	87%	84%	88%	83%	88%

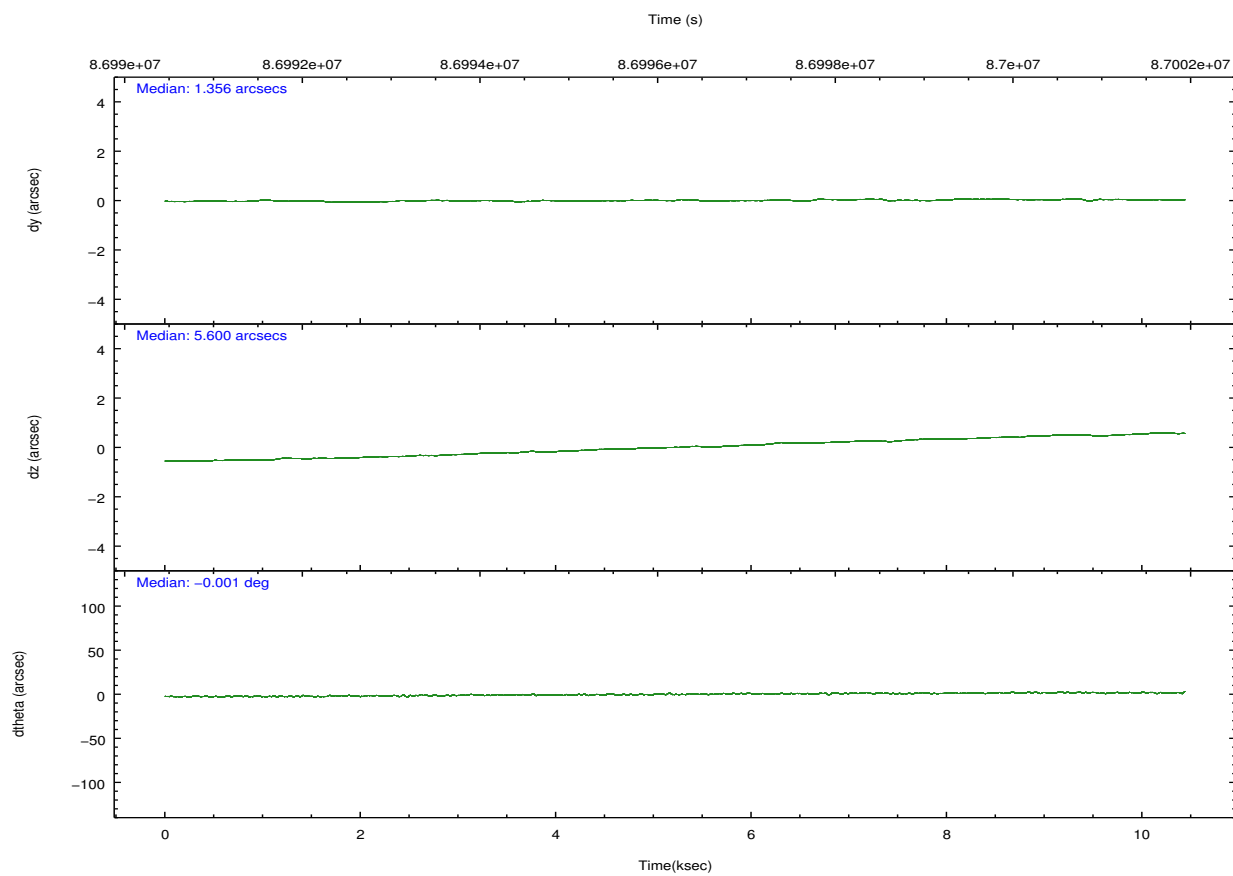
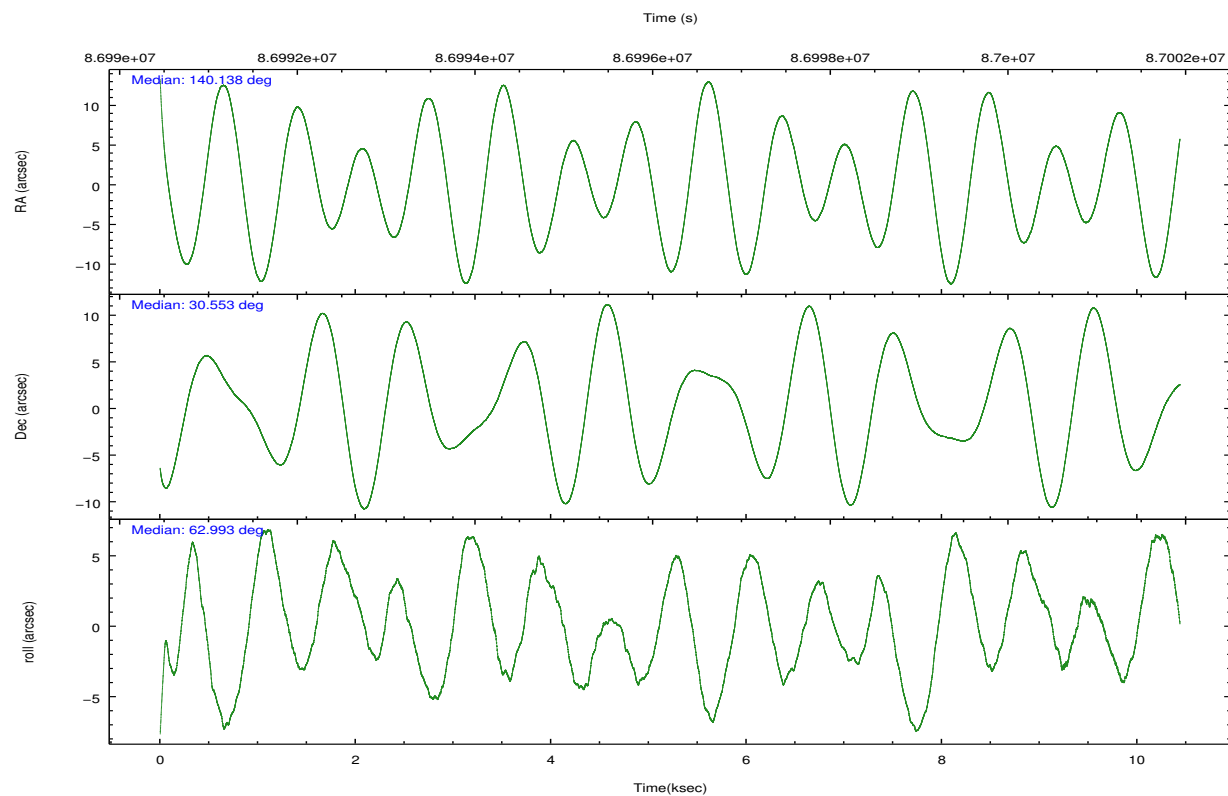
	ccd 0	ccd 1	ccd 2	ccd 3	ccd 6
grade 0 events	3155	4130	3069	5846	2841
	5%	7%	5%	9%	4%
grade 1 events	36	24	34	30	22
	0%	0%	0%	0%	0%
grade 2 events	1439	1676	1355	1676	1334
	2%	2%	2%	2%	2%
grade 3 events	715	763	631	756	679
	1%	1%	1%	1%	1%
grade 4 events	668	767	713	739	693
	1%	1%	1%	1%	1%
grade 5 events	2045	2322	2009	2217	2440
	3%	4%	3%	3%	4%
grade 6 events	1208	1366	1160	1299	1299
	2%	2%	1%	2%	2%
grade 7 events	46655	46654	49939	51054	49438
	83%	80%	84%	80%	84%

2.2 Compared Parameters

Parameter	Planned	Actual	Parameter	Planned	Actual
Instrument	ACIS	ACIS	Obspar format version number	7	7
Detector	ACIS-01236	ACIS-01236	Obspar file type	PREDICTED	ACTUAL
Grating	NONE	NONE	Obspar update status	NONE	UPDATED
Data mode	VFAINT	VFAINT	Number of optional ACIS chips dropped	0	0
Observation mode	POINTING	POINTING	On-chip summing requested	N	N
[deg] Pointing RA	140.139322	140.1376841268227	Subarray requested	NONE	NONE
[deg] Pointing Dec	30.525601	30.55305192398517	Alternating exposures requested	N	N
[deg] Pointing Roll	62.790413	62.9999253078382	[s] Primary exposure time	0.000000	3.2
[mm] SIM focus pos	-0.782348	-0.7809083437167272			
[mm] SIM defocus	0	0.001439871863259334			
[mm] SIM translation stage pos	-225.840463	-225.848371962627			
[mm] SIM translation stage offset	-7.752	-7.744081040302689			
[s] Observation start time (MET)	86991117.184000	86989967.43329			
Observation start date	2000-10-03T20:10:53	2000-10-03T19:52:47			
[s] Observation end time (MET)	87001417.184000	87001961.47124299			
Observation end date	2000-10-03T23:02:33	2000-10-03T23:12:41			
Read mode	TIMED	TIMED			

2.3 Aspect



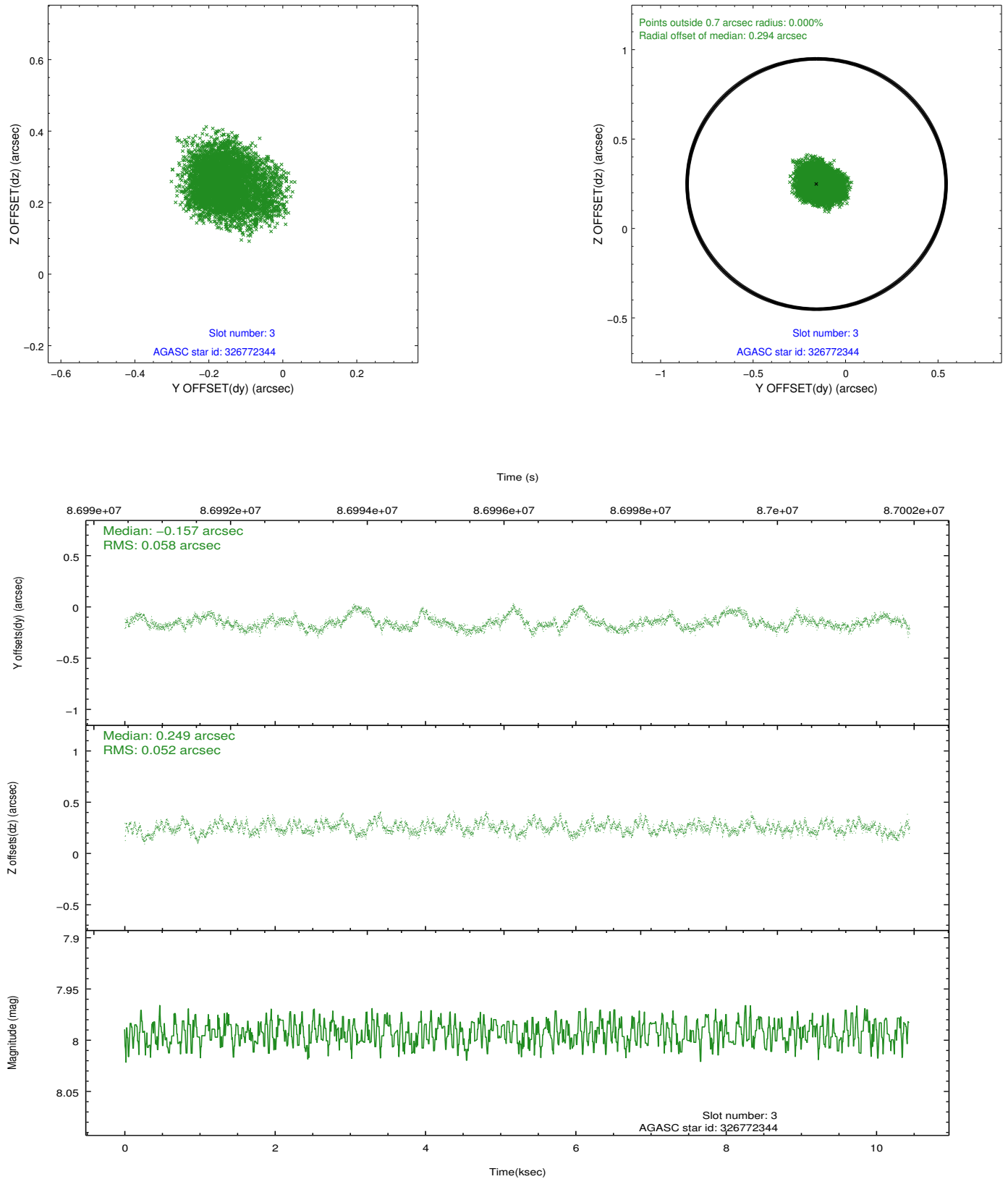


Slot Statistics

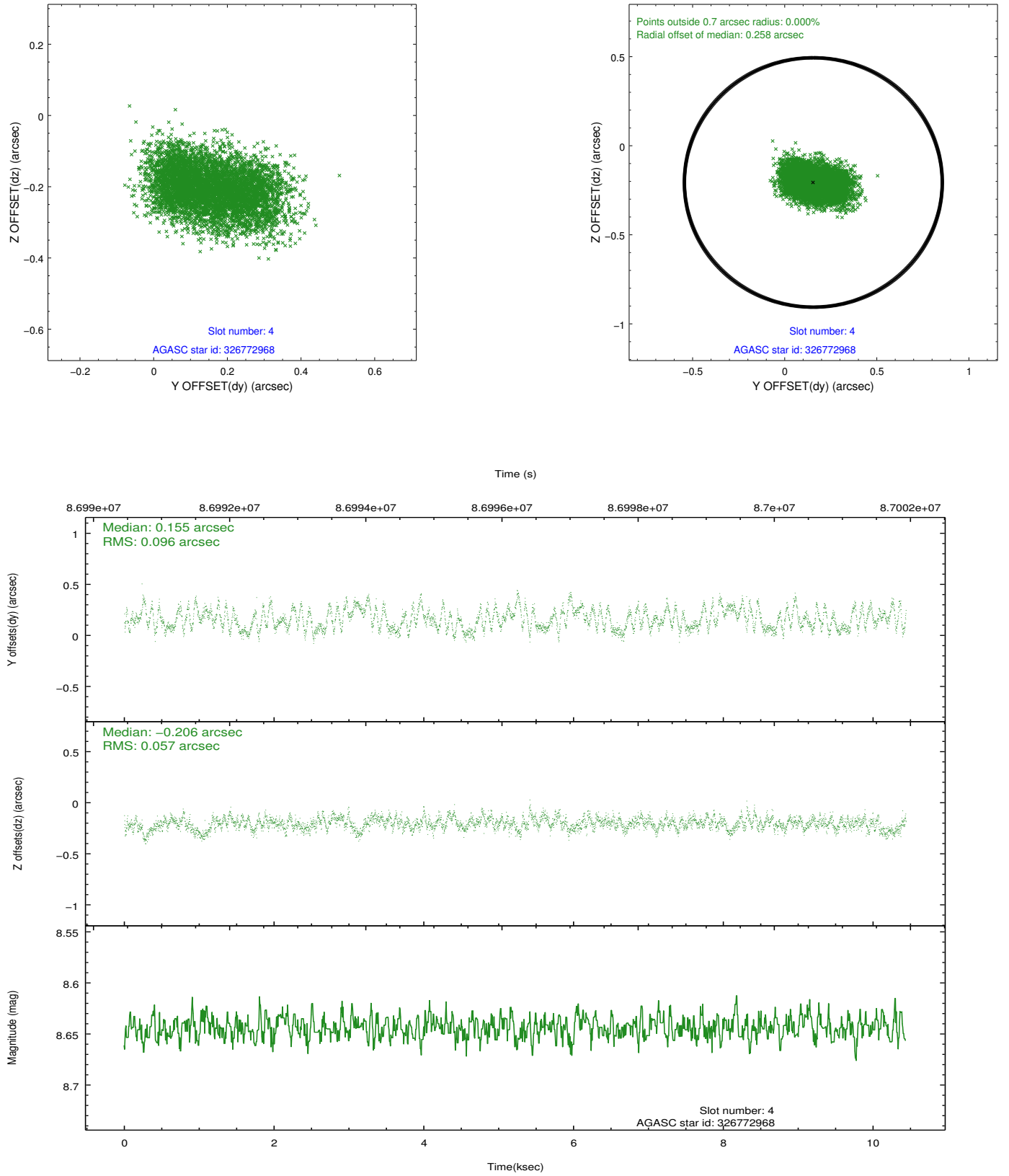
slot	status	id	mag	n_pts	med_dy	med_dz	dr1	dr2	ra	dec	mean_y	mean_z
0	FID	ACIS-I-1	7.23	2545	0.072	-0.040	0.012	0.019	0.000000	0.000000	938.40	-987.98
1	FID	ACIS-I-5	7.23	2544	-0.162	0.088	0.011	0.016	0.000000	0.000000	-1809.65	909.35
2	FID	ACIS-I-6	7.26	2546	-0.002	0.022	0.012	0.019	0.000000	0.000000	403.35	1554.34
3	GUIDE	326772344	7.99	5091	-0.157	0.249	0.084	0.135	140.750494	30.197118	-177.85	-2228.86
4	GUIDE	326772968	8.64	5090	0.155	-0.206	0.121	0.188	139.254366	30.374631	-1731.13	2200.46
5	GUIDE	326771040	9.75	5088	0.000	-0.124	0.152	0.250	139.718646	30.528838	-584.84	1167.27
6	GUIDE	326769456	9.76	5088	-0.012	-0.077	0.202	0.284	139.990989	30.956642	1170.25	1117.74
7	GUIDE	326901592	9.96	5086	0.004	0.172	0.150	0.242	141.124812	30.730345	2062.03	-2367.90

2.4 Star Slots

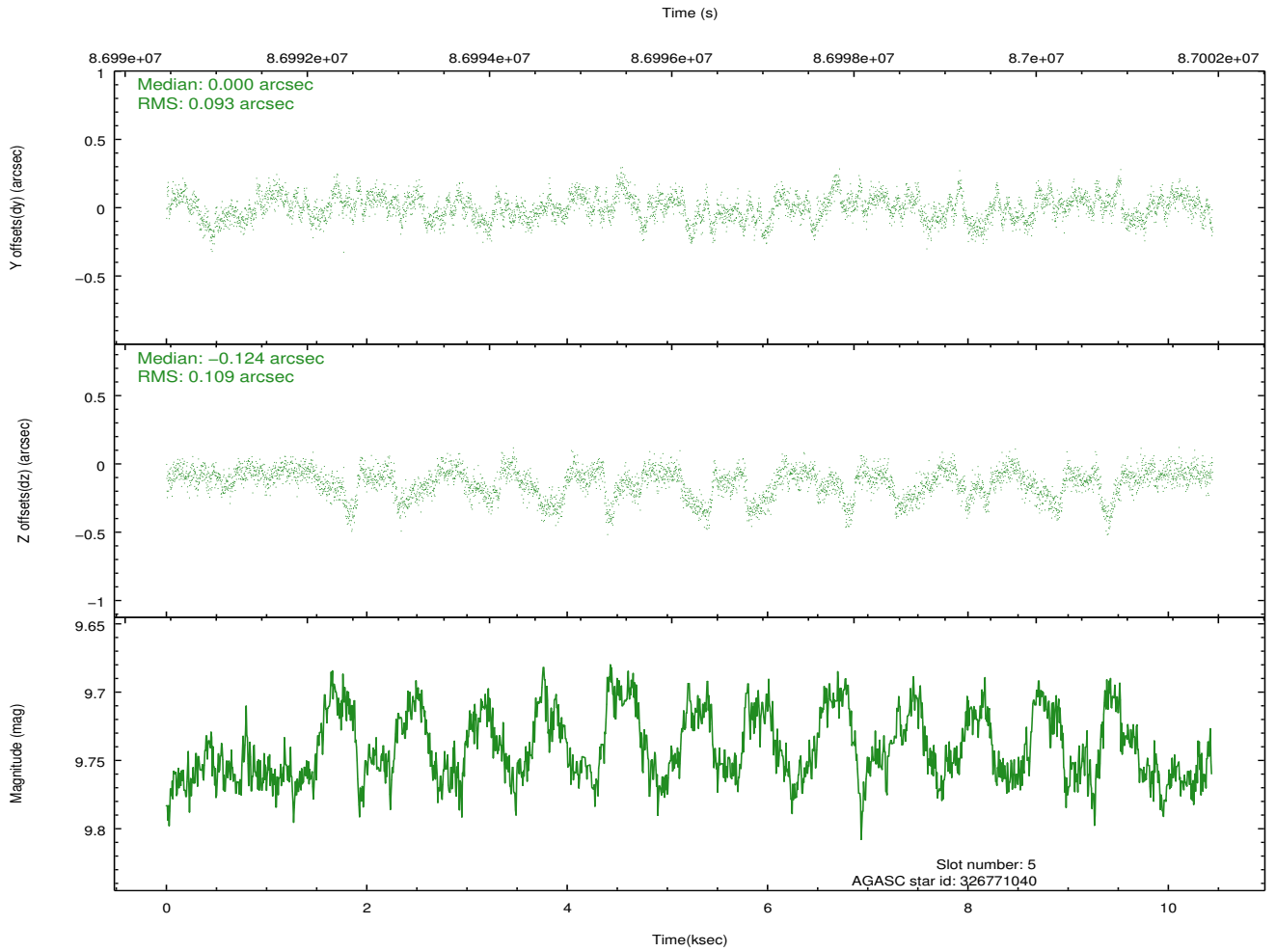
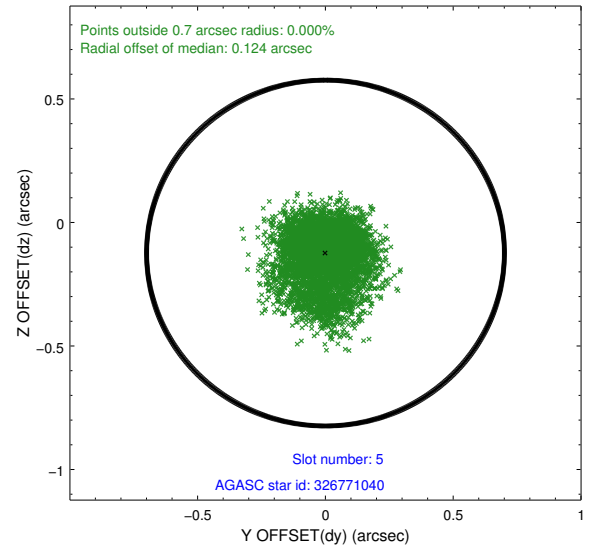
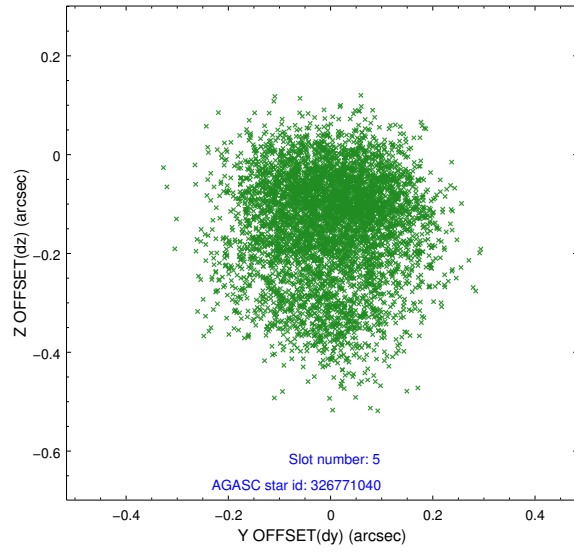
2.4.1 Slot 3



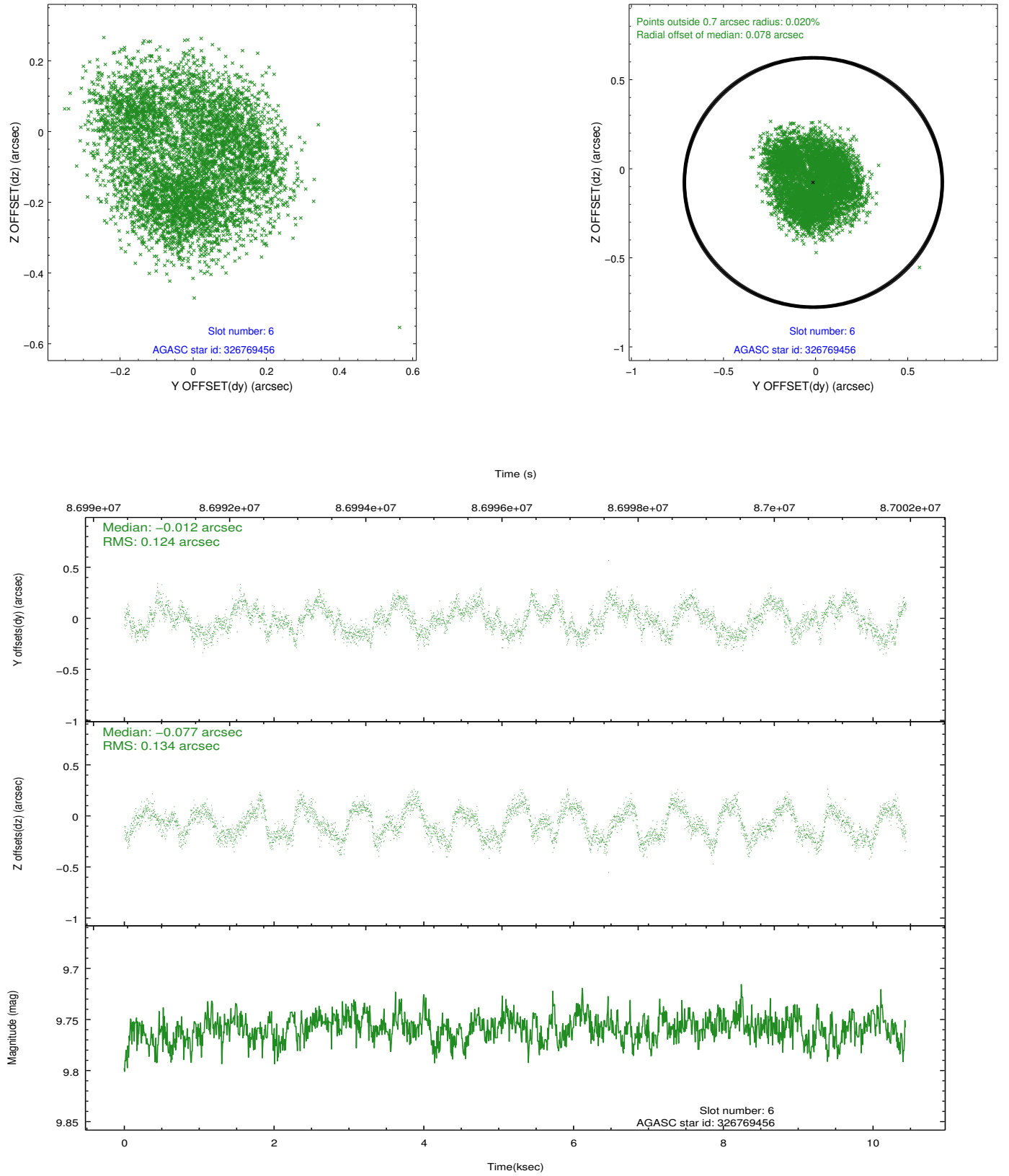
2.4.2 Slot 4



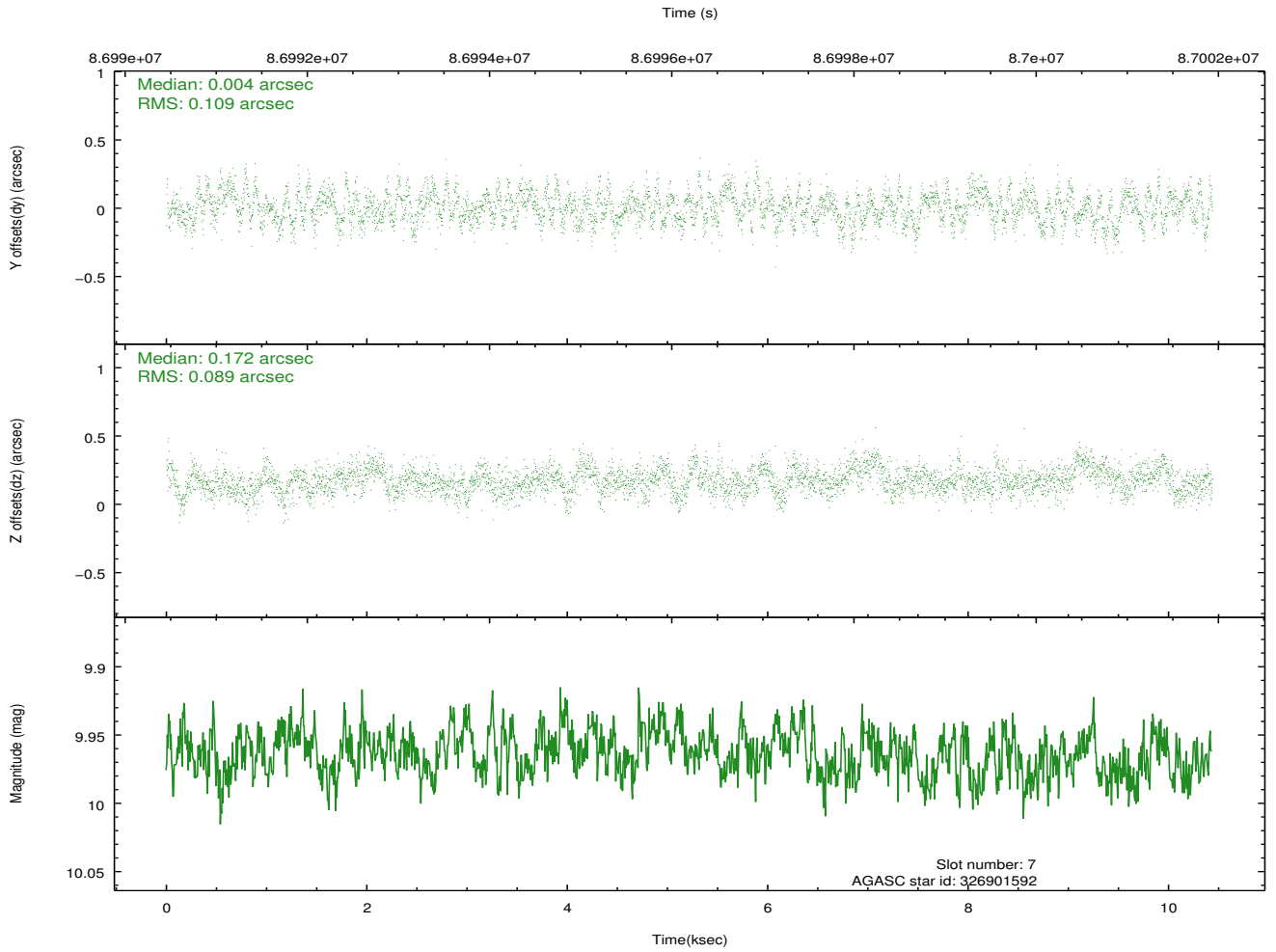
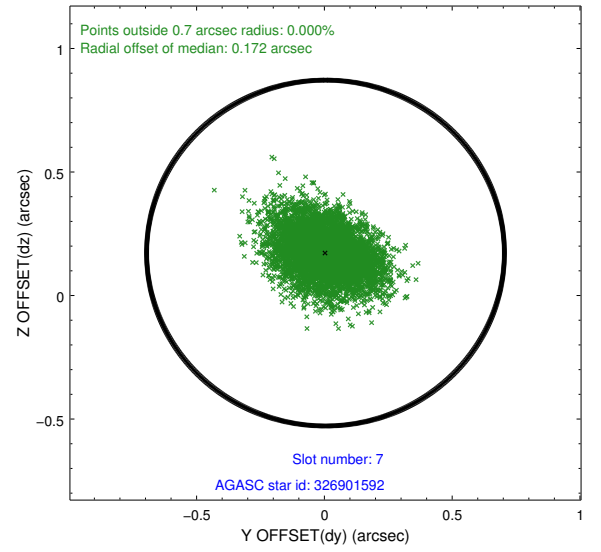
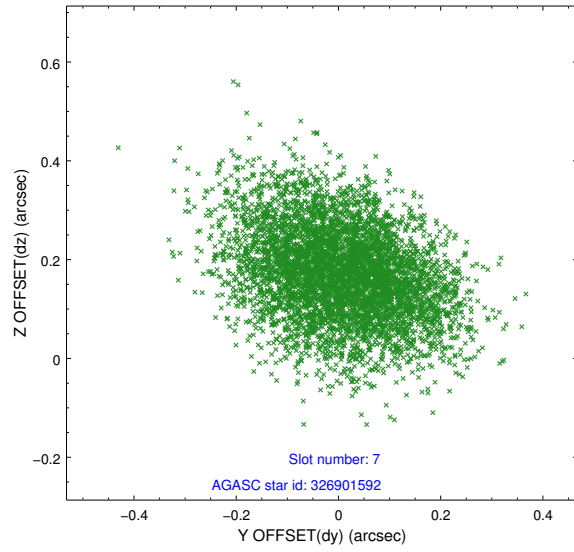
2.4.3 Slot 5



2.4.4 Slot 6

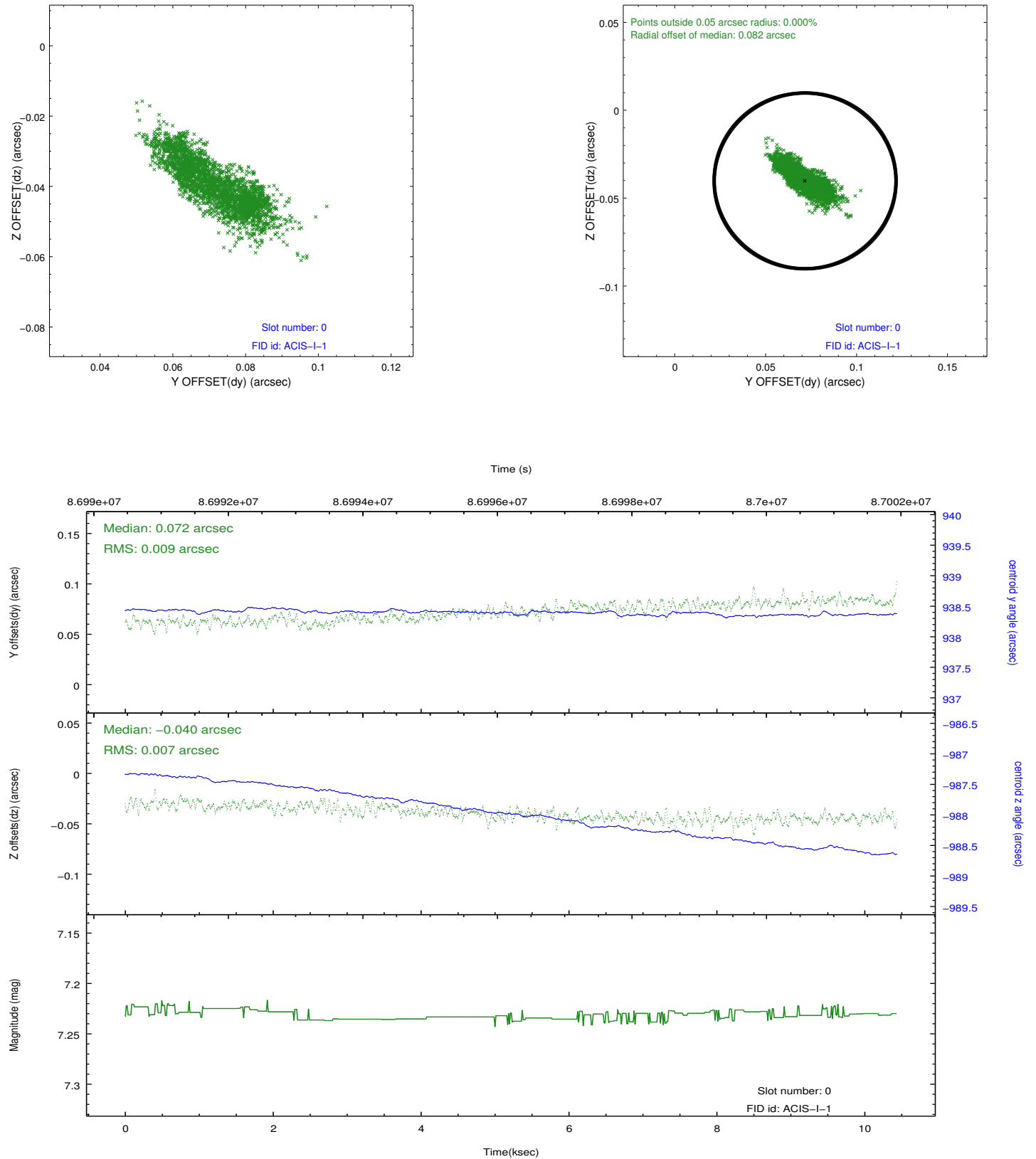


2.4.5 Slot 7

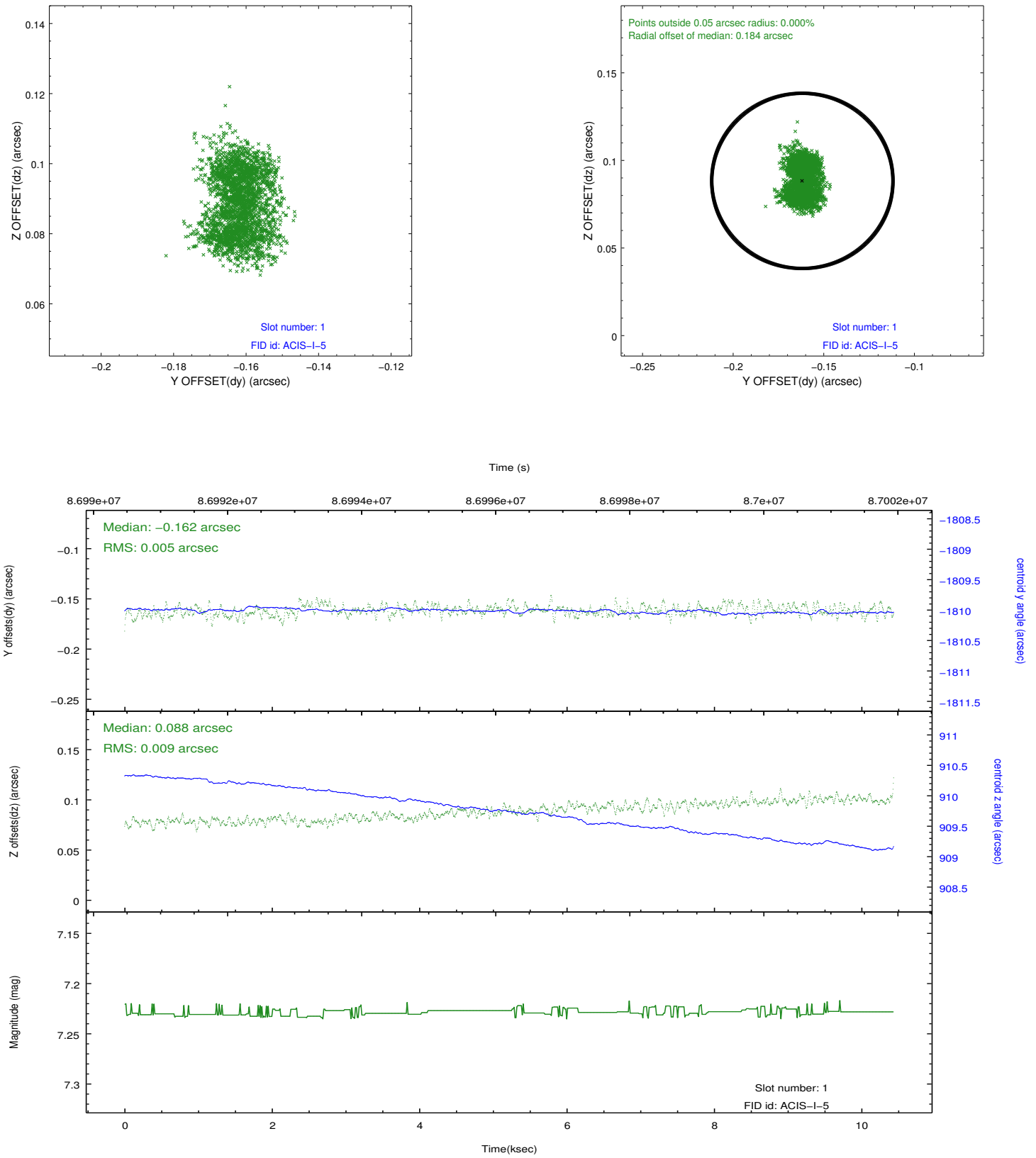


2.5 FID Slots

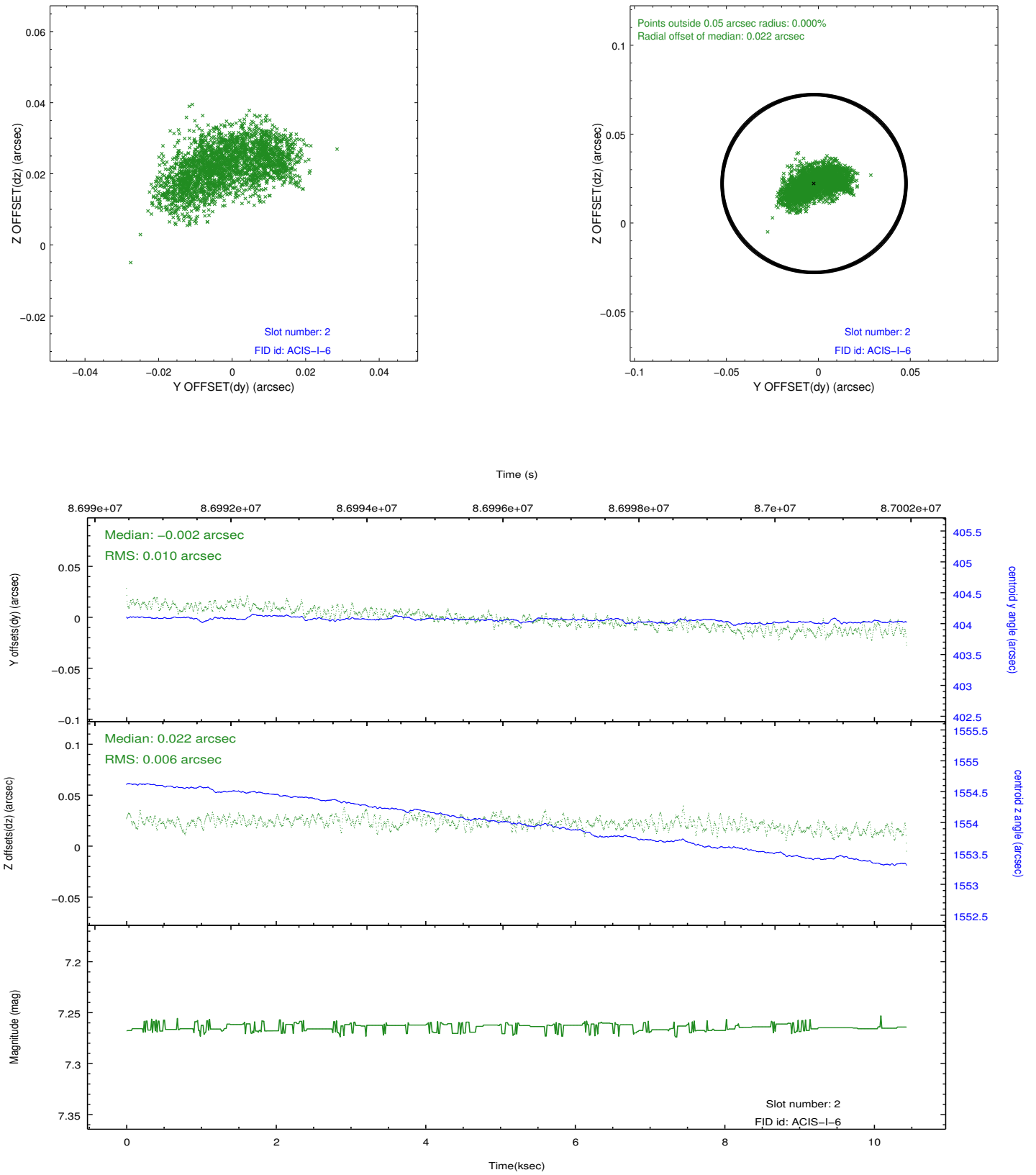
2.5.1 Slot 0



2.5.2 Slot 1



2.5.3 Slot 2



A Summary

A.1 Status

V&V Scientist	Jen Lauer
V&V Date (YYYY-MM-DD)	2012.09.13
V&V Edition	1
V&V Disposition and Status	OK
V&V Charge Time	10.07

A.2 Comments