

V&V Reference Report

L2 ASCDS Version : 7.6.10

Observation 524 - L2 Version 001
Chandra X-Ray Center

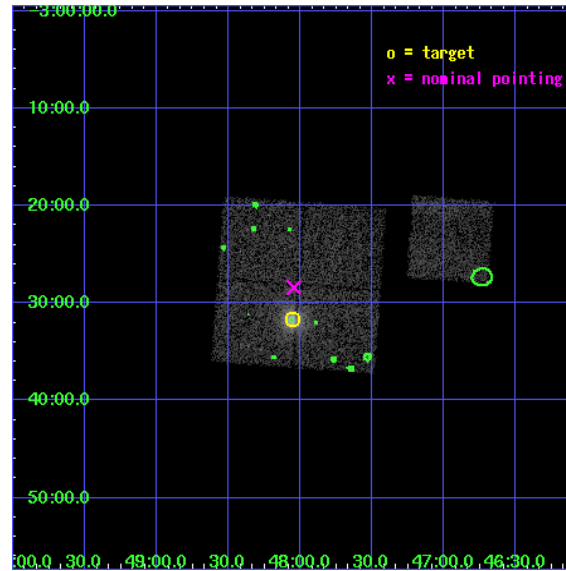
L2 Processing Date : Jun 6 2007

Contents

1	Front	2
2	OBI	3
2.1	OBI	3
2.1.1	Images	3
2.1.2	Bias	3
2.1.3	Parameters	4
2.1.4	Events	4
2.2	Compared Parameters	5
2.3	Aspect	6
2.4	Star Slots	9
2.4.1	Slot 3	9
2.4.2	Slot 4	10
2.4.3	Slot 5	11
2.4.4	Slot 6	12
2.4.5	Slot 7	13
2.5	FID Slots	14
2.5.1	Slot 0	14
2.5.2	Slot 1	15
2.5.3	Slot 2	16
3	Point Sources	17
A	Summary	18
A.1	Status	18
A.2	Comments	18

1 Front

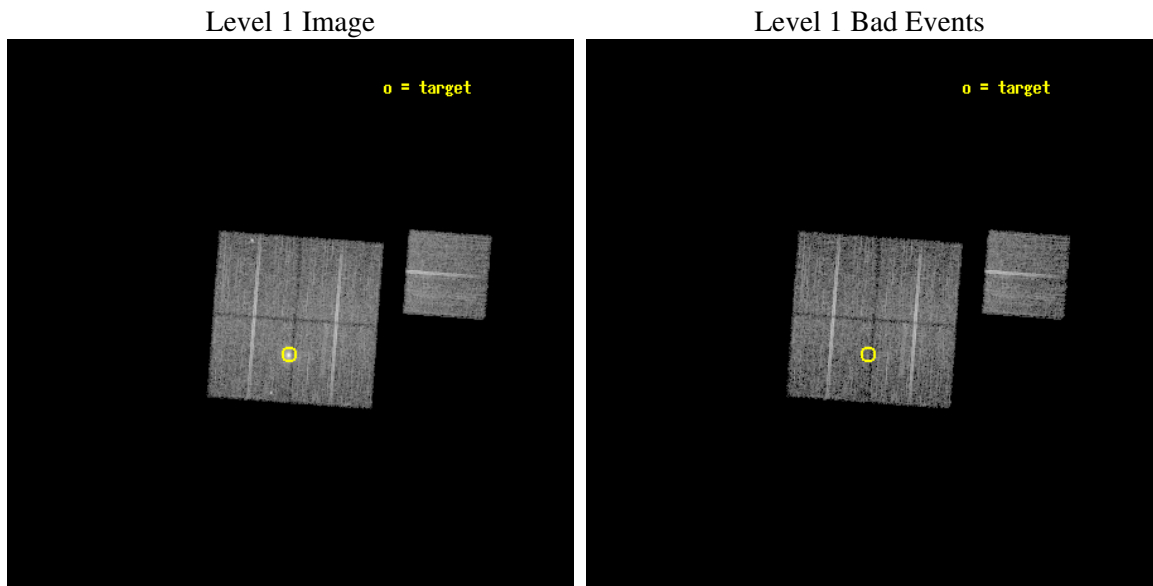
seq_num	800032
obs_id	524
title	DETERMINATION OF H0/Q0
observer	DR. LEON VANSPEYBROECK
object	A383
dtcycle	0
cycle	P
ra_targ	42.01325
dec_targ	-3.527847
ra_nom	42.011268030998
dec_nom	-3.4733839073768
roll_nom	94.257555669775
revision	2
ontime	10089.600009397
livetime	9961.8394188499
ontime0	10089.600009397
ontime1	10089.600009397
ontime2	10086.35901922
ontime3	10089.600009397
ontime6	10089.600009397
l2events	36877



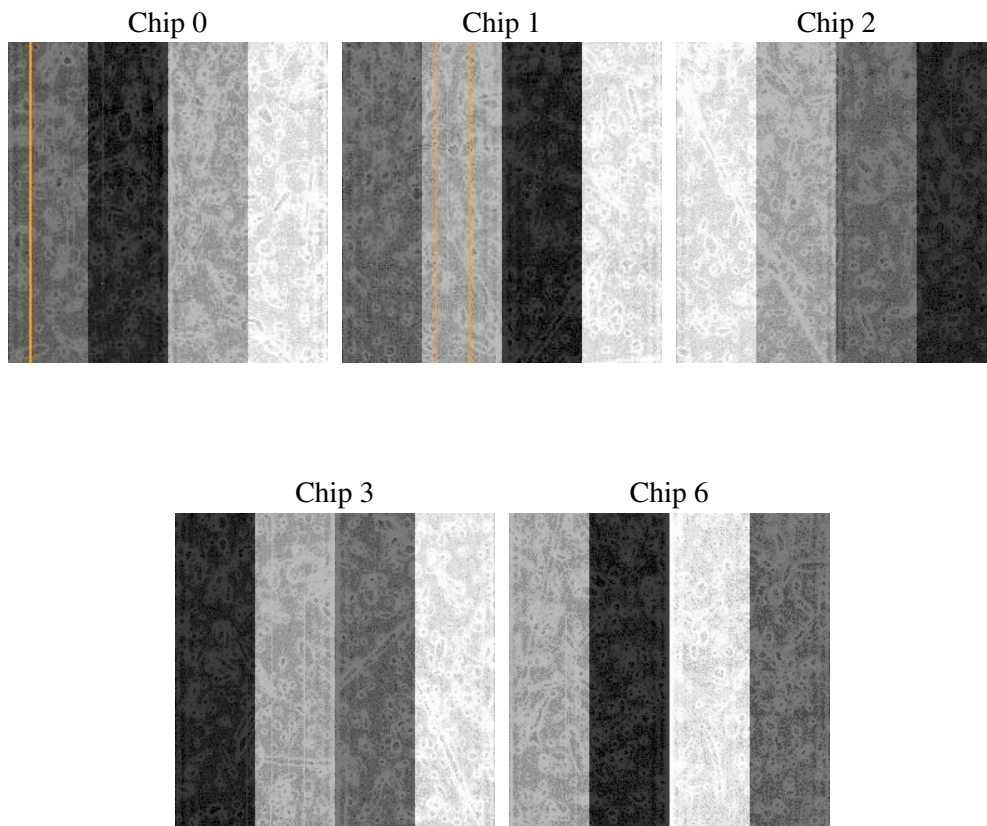
2 OBI

2.1 OBI

2.1.1 Images



2.1.2 Bias



2.1.3 Parameters

obi_num	0
ascdsver	7.6.10
caldsver	3.4.0
date	2007-06-06T21:12:41
revision	2

sched_exp_time	10000.000000
ontime	10089.600009397
ontime0	10089.600009397
ontime1	10089.600009397
ontime2	10086.35901922
ontime3	10089.600009397
ontime6	10089.600009397
l1events	298225

2.1.4 Events

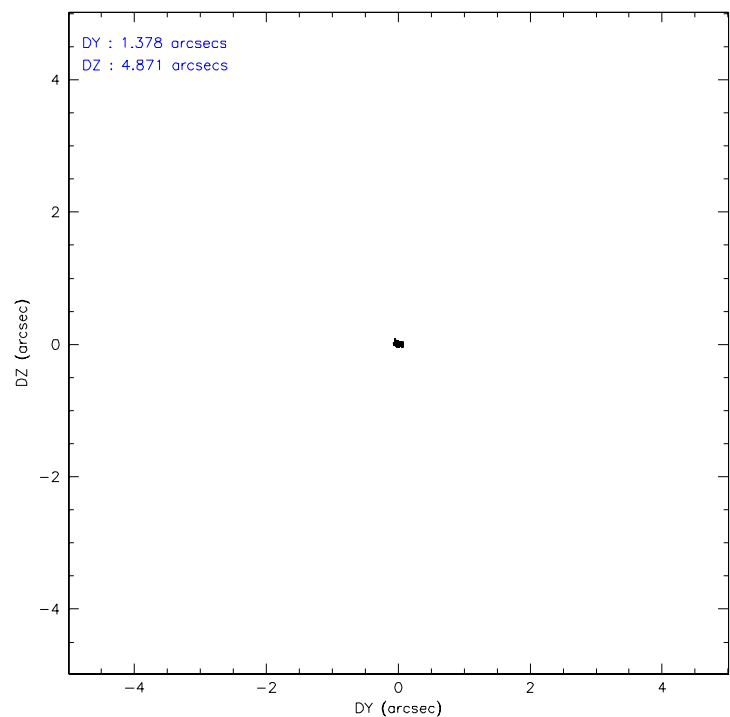
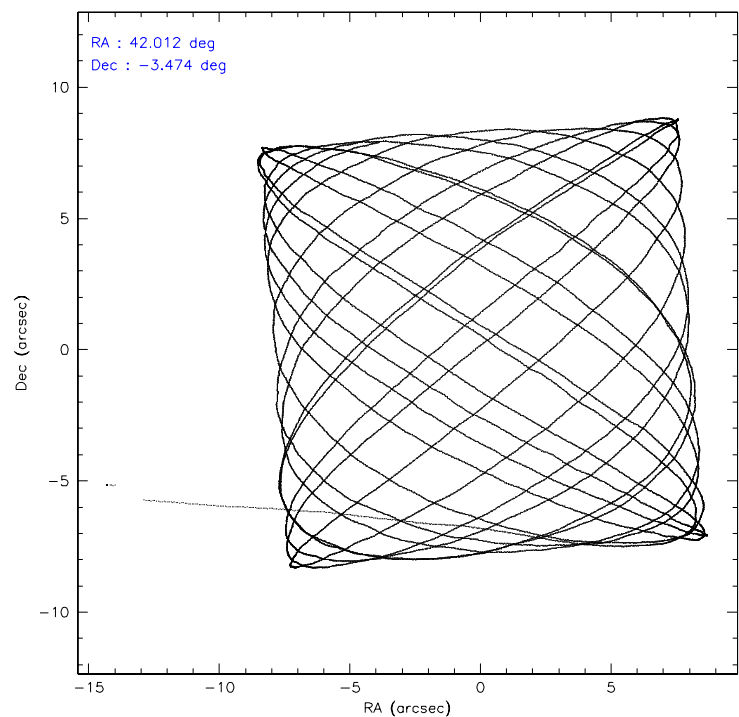
	ccd 0	ccd 1	ccd 2	ccd 3	ccd 6
level 1 events	57001	61696	59544	59384	60600
rejected events	49445	47940	52892	51460	54079
rejected %	86%	77%	88%	86%	89%

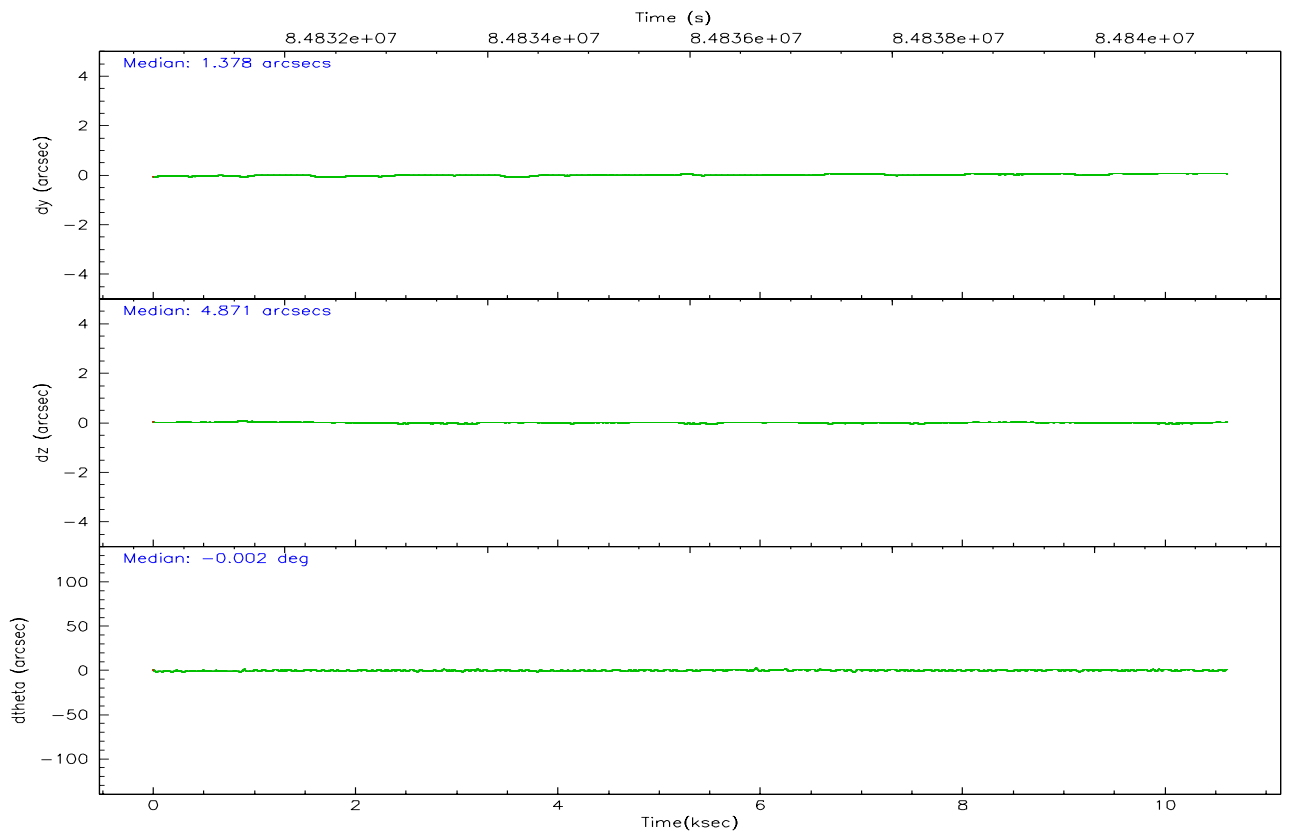
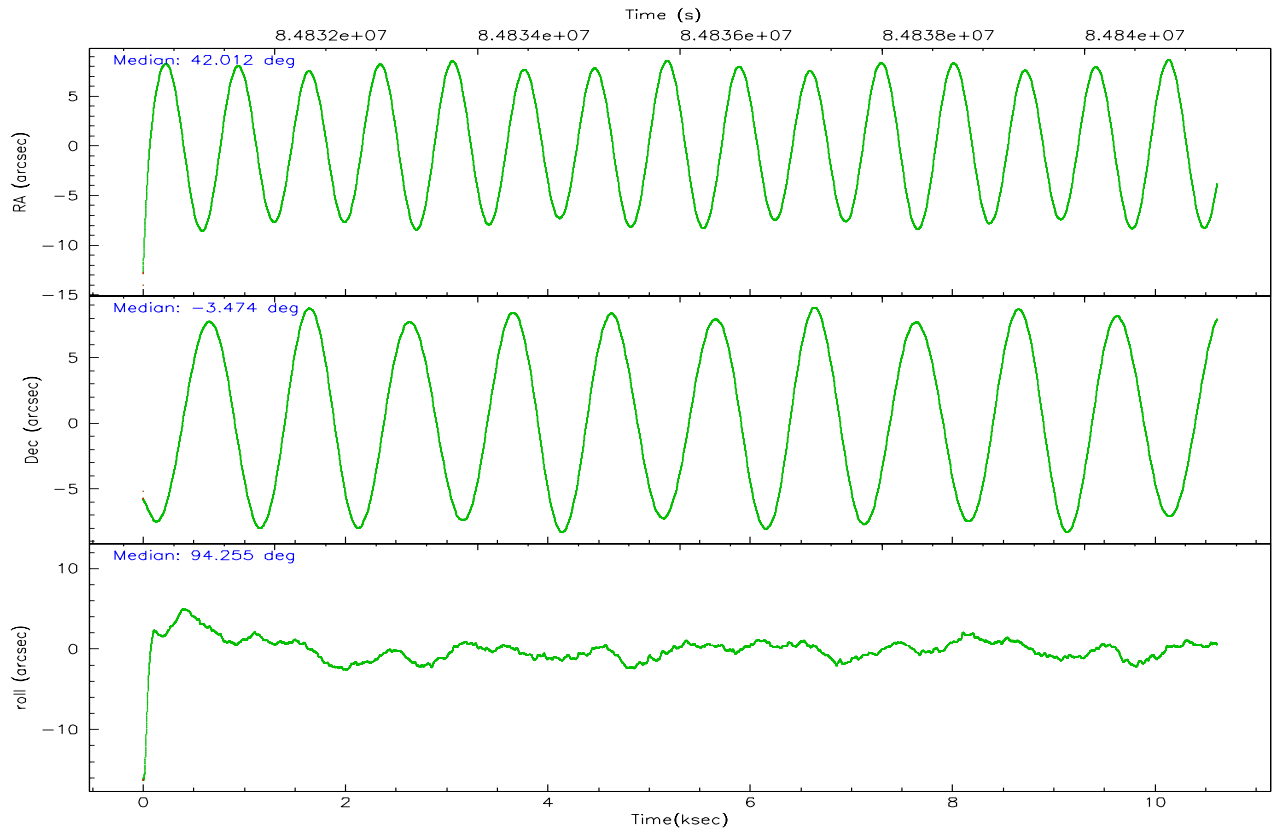
	ccd 0	ccd 1	ccd 2	ccd 3	ccd 6
grade 0 events	3444	8401	2935	4093	2555
	6%	13%	4%	6%	4%
grade 1 events	41	51	21	33	16
	0%	0%	0%	0%	0%
grade 2 events	1512	1994	1385	1414	1326
	2%	3%	2%	2%	2%
grade 3 events	671	952	668	624	681
	1%	1%	1%	1%	1%
grade 4 events	647	910	631	626	658
	1%	1%	1%	1%	1%
grade 5 events	2032	2221	1913	2116	2420
	3%	3%	3%	3%	3%
grade 6 events	1284	1503	1038	1169	1304
	2%	2%	1%	1%	2%
grade 7 events	47370	45664	50953	49309	51640
	83%	74%	85%	83%	85%

2.2 Compared Parameters

Parameter	Planned	Actual	Parameter	Planned	Actual
Instrument	ACIS	ACIS	Obspar format version number	6	6
Detector	ACIS-01236	ACIS-01236	Obspar file type	PREDICTED	ACTUAL
Grating	NONE	NONE	Obspar update status	NONE	UPDATED
Data mode	VFAINT	VFAINT	Number of optional ACIS chips dropped	0	0
Observation mode	POINTING	POINTING	On-chip summing requested	N	N
Pointing RA	42.026741	42.01126803099849	Subarray requested	NONE	NONE
Pointing Dec	-3.496154	-3.473383907376783	Alternating exposures requested	N	N
Pointing Roll	94.049836	94.25755566977523	Primary exposure time	3.200000	3.2
SIM focus pos (mm)	-0.782348	-0.7809083437167272			
SIM defocus (mm)	0	0.001439871863259334			
SIM translation stage pos (mm)	-236.532463	-236.5241547330508			
SIM translation stage offset (mm)	2.94	2.931701730121091			
Observation start time	84831312.184000	84830142.189503			
Observation start date	2000-09-08T20:14:08	2000-09-08T19:55:42			
Observation end time	84841312.184000	84841755.952439			
Observation end date	2000-09-08T23:00:48	2000-09-08T23:09:15			
Read mode	TIMED	TIMED			

2.3 Aspect



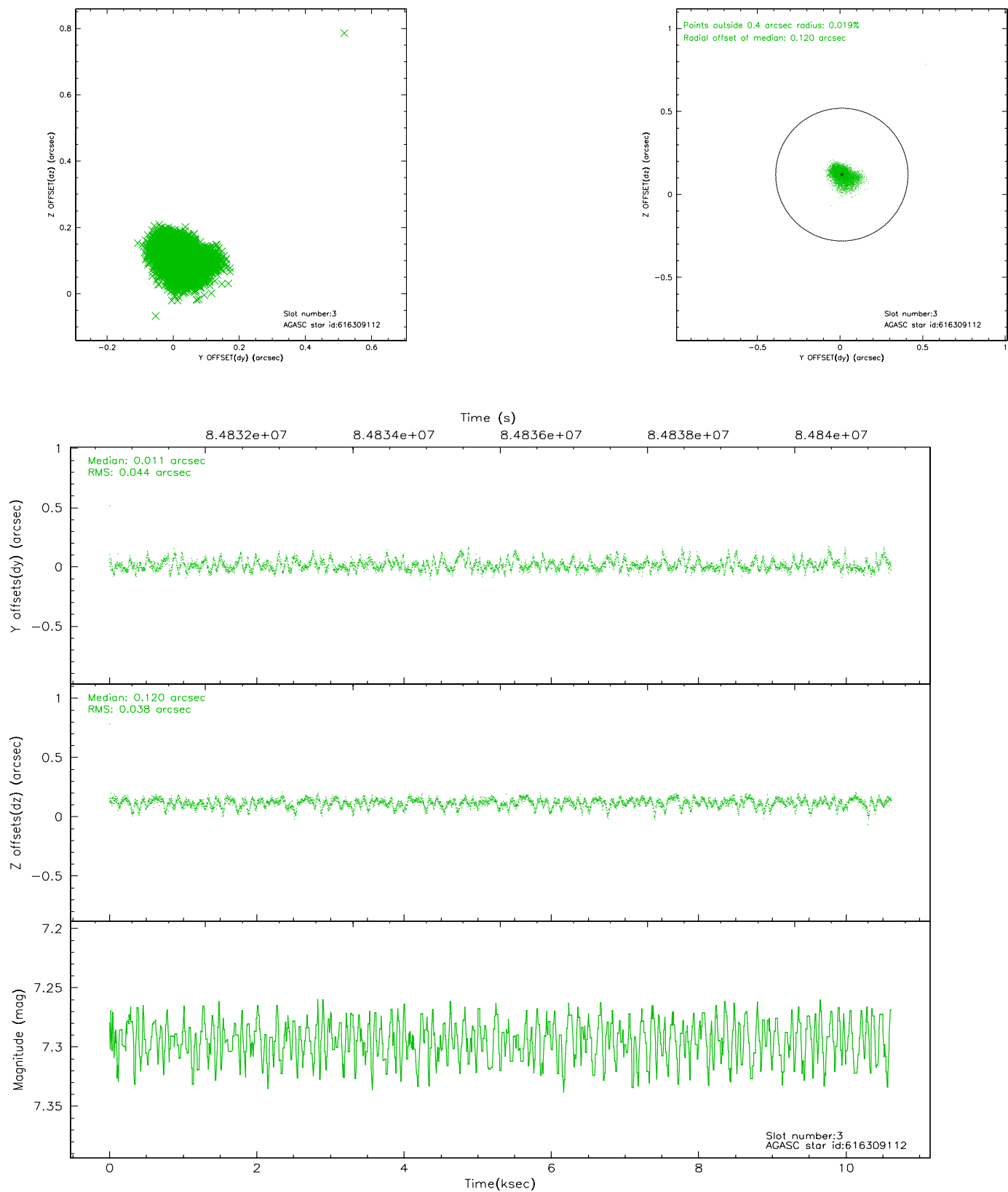


Slot Statistics

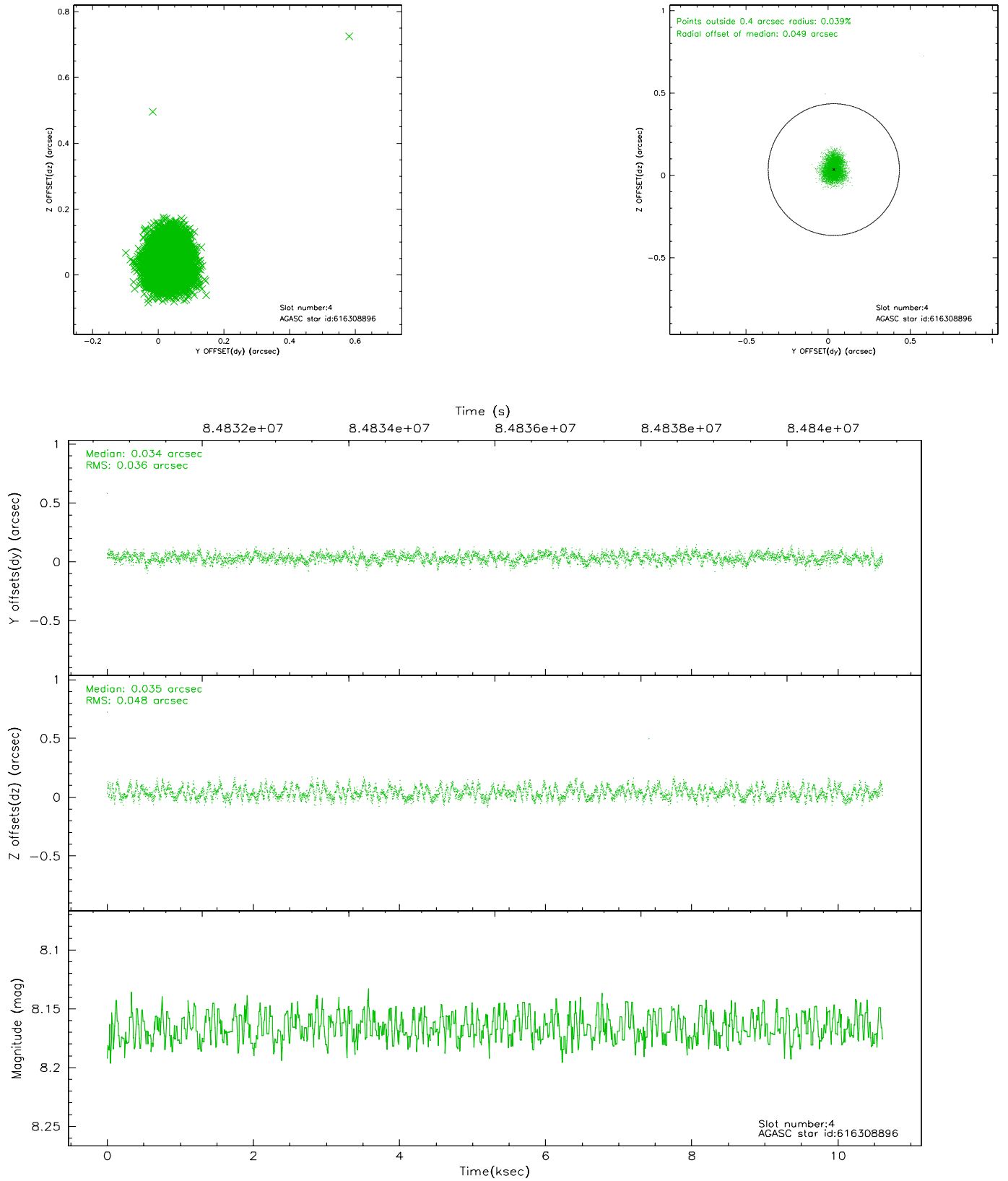
slot	status	id	mag	n_pts	med_dy	med_dz	dr1	dr2	ra	dec	mean_y	mean_z
0	FID	ACIS-I-2	7.14	2590	-0.001	0.003	0.008	0.014	0.000000	0.000000	-755.51	-774.63
1	FID	ACIS-I-4	7.21	2590	-0.057	0.011	0.006	0.010	0.000000	0.000000	2158.29	1131.34
2	FID	ACIS-I-5	7.23	2590	-0.042	0.055	0.008	0.014	0.000000	0.000000	-1808.89	1130.18
3	GUIDE	616309112	7.29	5180	0.011	0.120	0.059	0.103	42.055014	-3.619210	-448.38	-69.15
4	GUIDE	616308896	8.17	5180	0.034	0.035	0.063	0.096	42.427748	-3.548145	-288.07	-1423.19
5	GUIDE	616309048	8.81	5179	-0.113	-0.107	0.063	0.101	41.784403	-3.226459	1030.37	800.78
6	GUIDE	616302872	8.25	5177	-0.107	-0.083	0.050	0.080	41.855710	-3.296822	759.90	563.41
7	GUIDE	616306616	8.90	5179	0.168	0.038	0.062	0.099	42.263219	-4.097260	-2217.70	-693.36

2.4 Star Slots

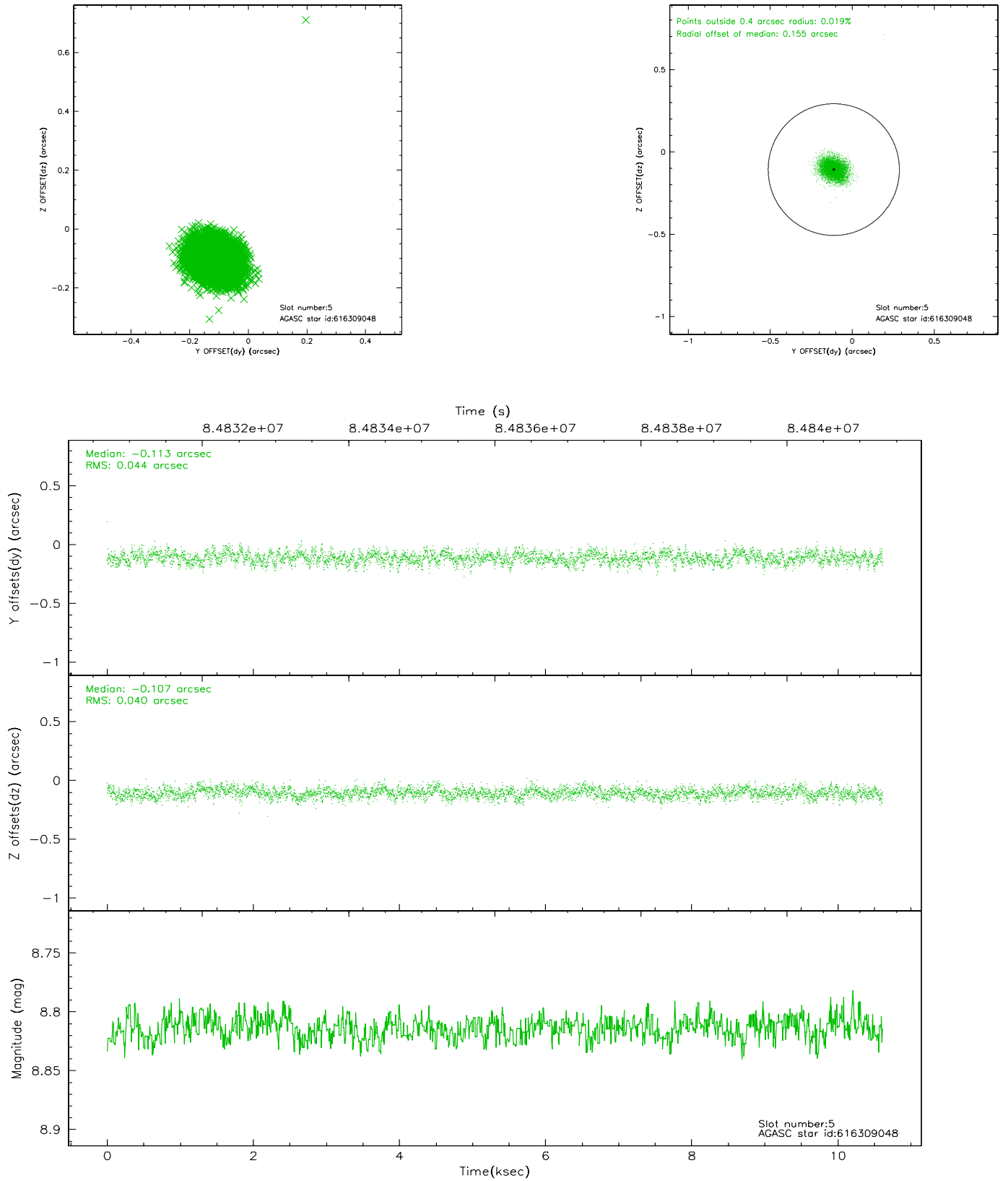
2.4.1 Slot 3



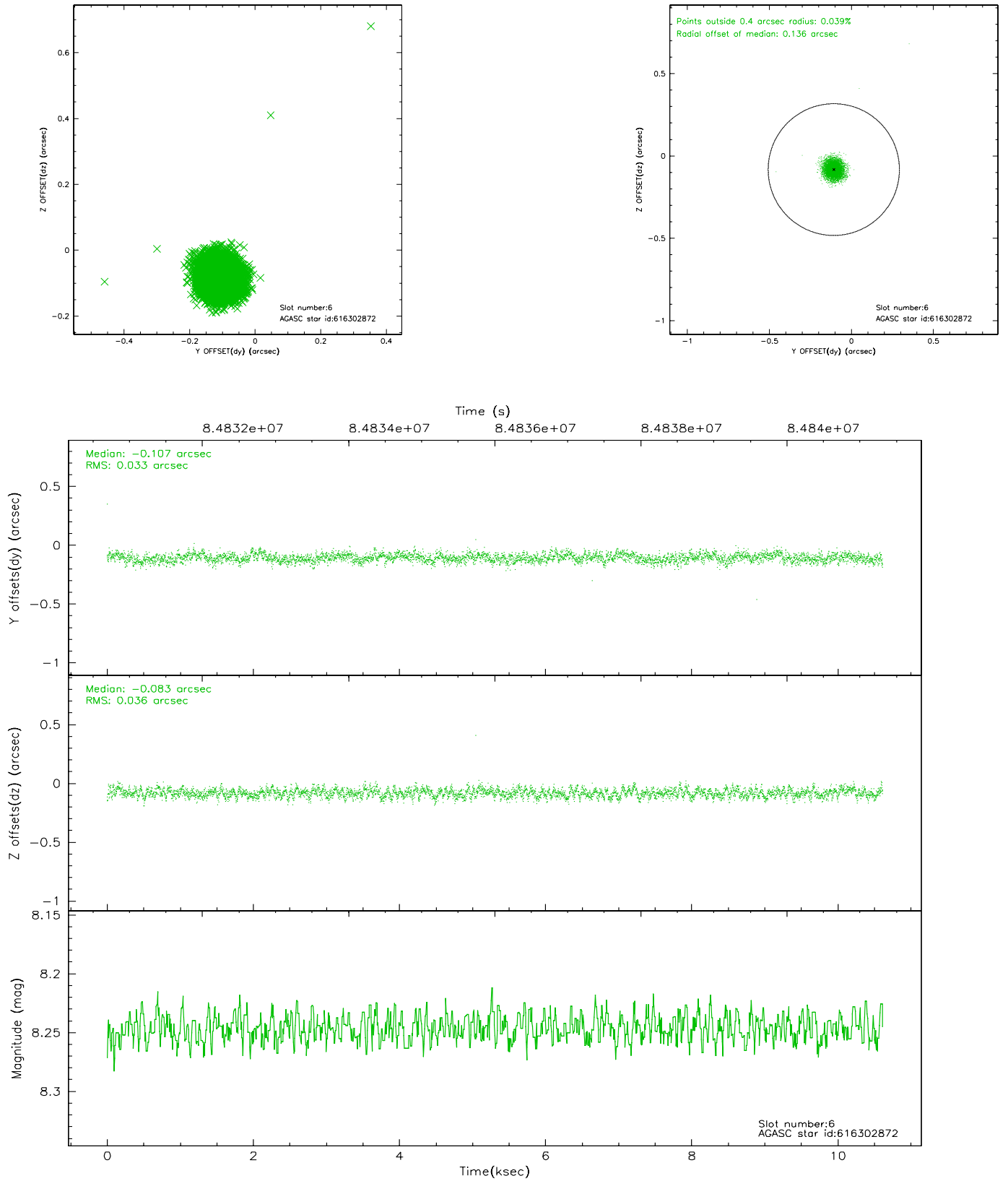
2.4.2 Slot 4



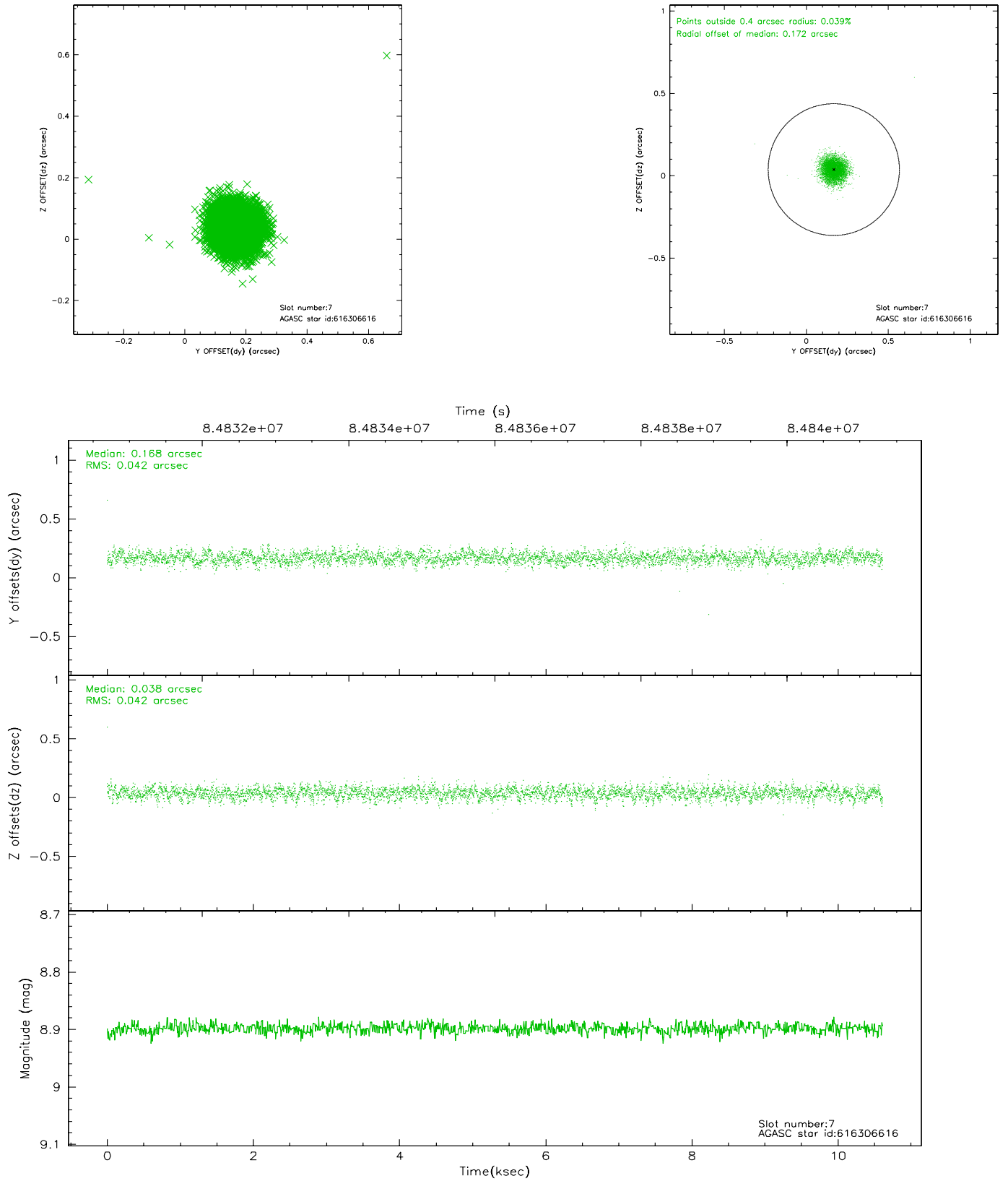
2.4.3 Slot 5



2.4.4 Slot 6

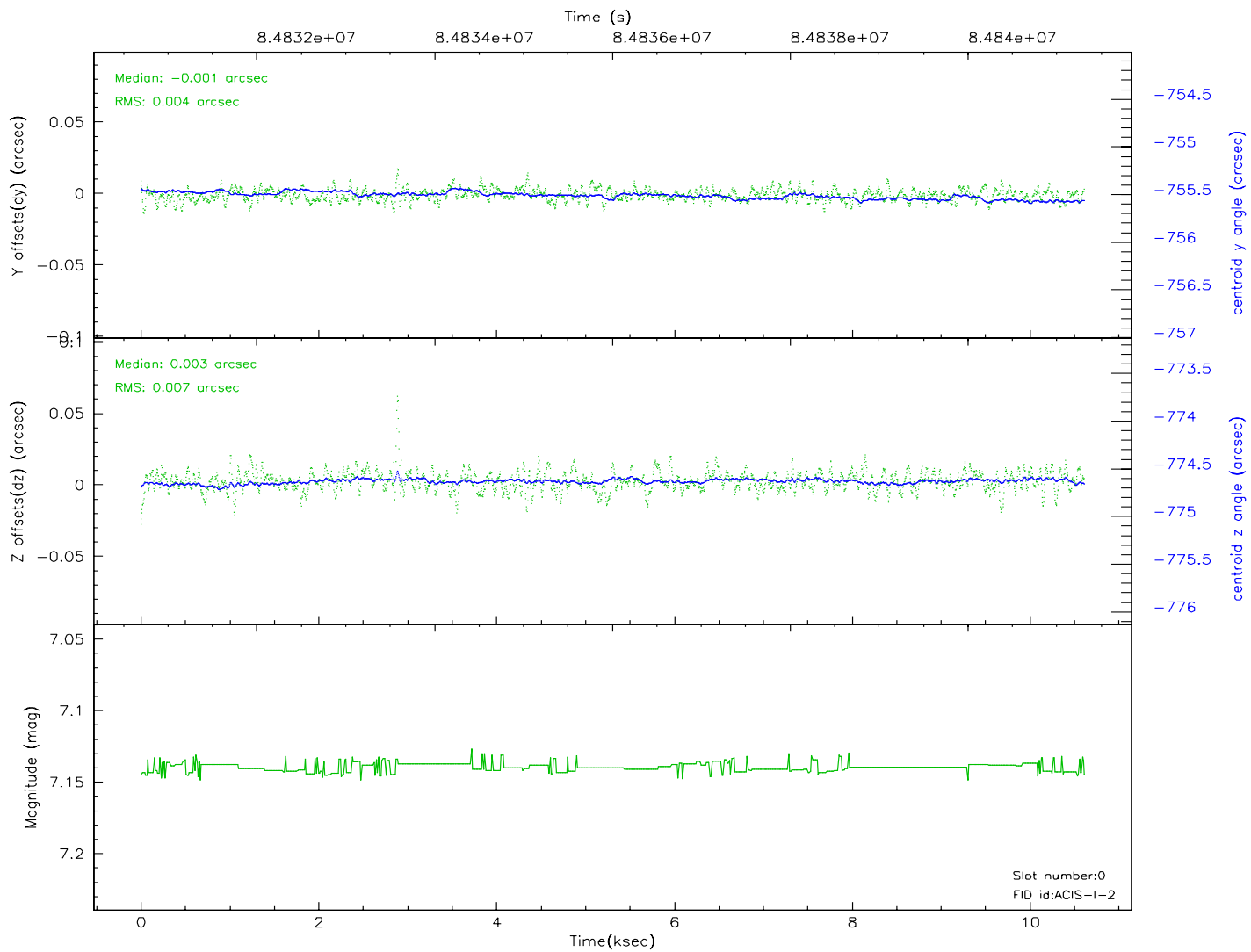
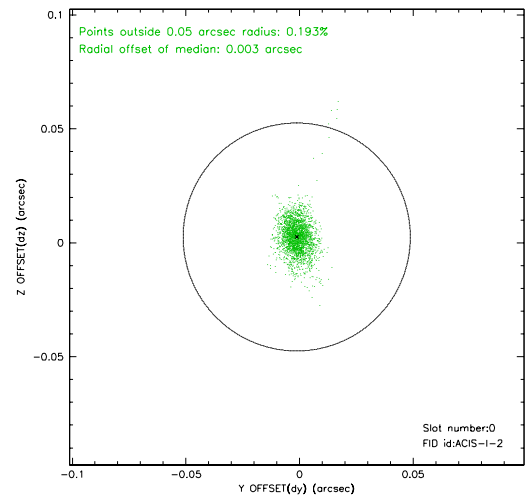
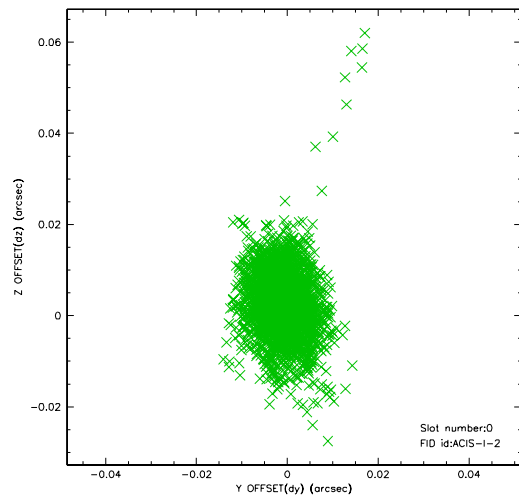


2.4.5 Slot 7

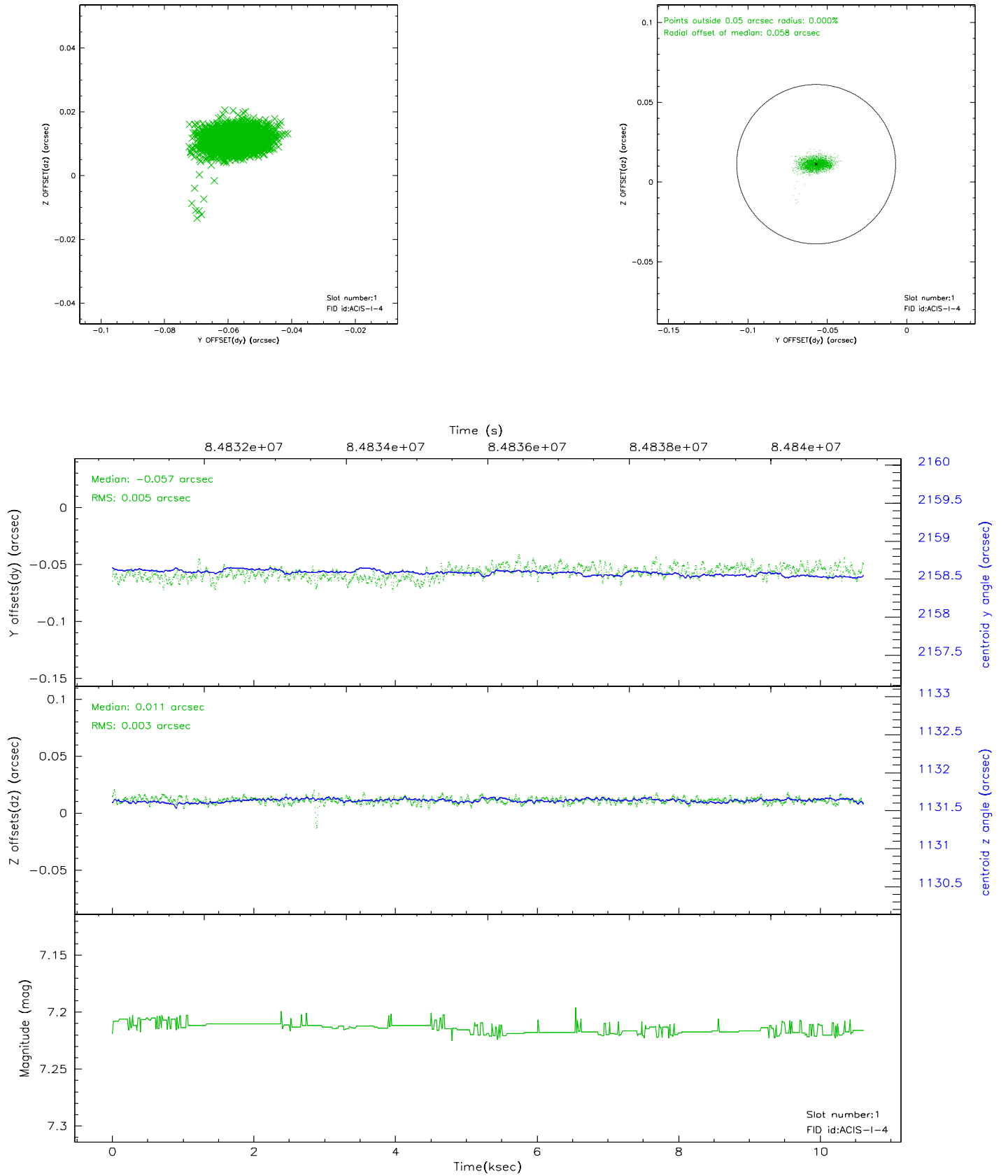


2.5 FID Slots

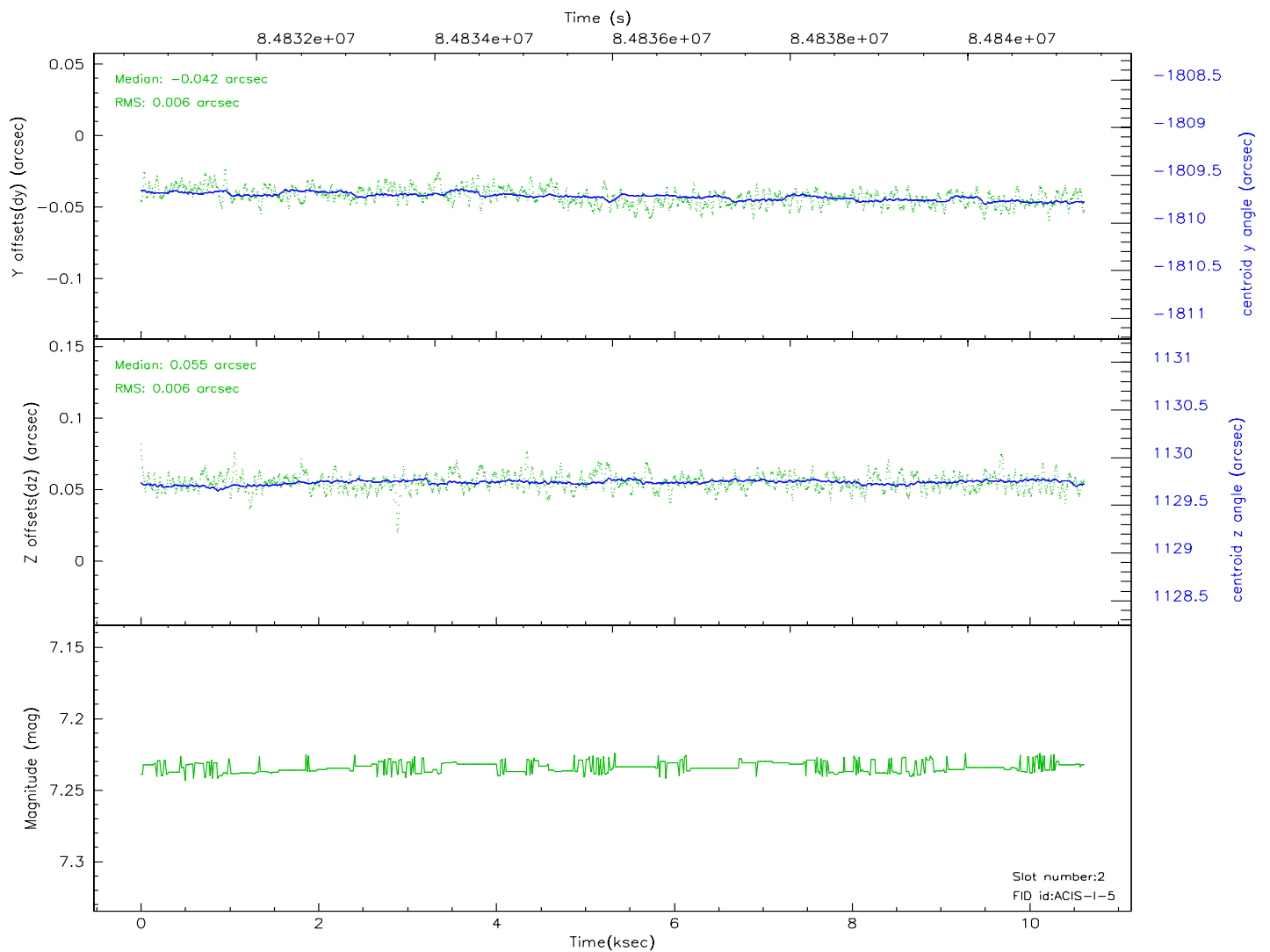
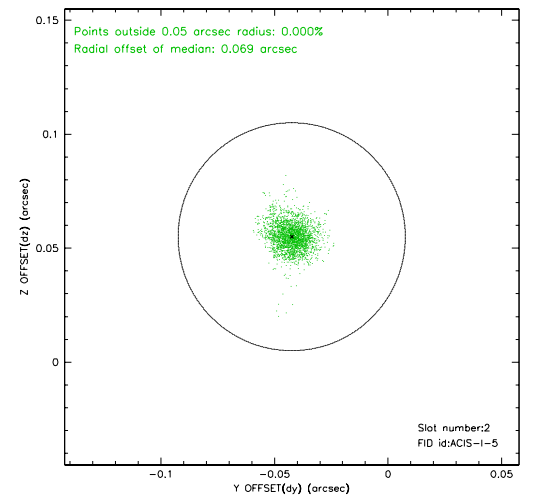
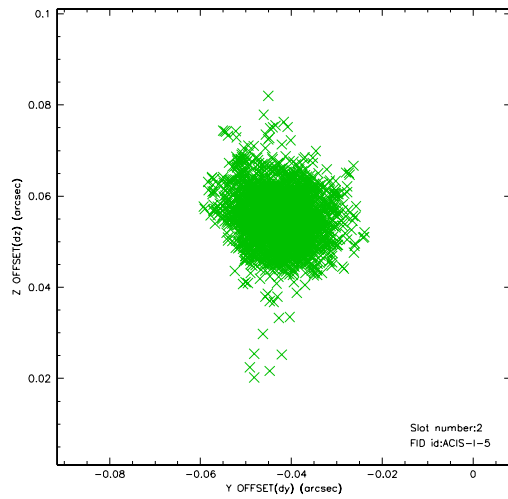
2.5.1 Slot 0



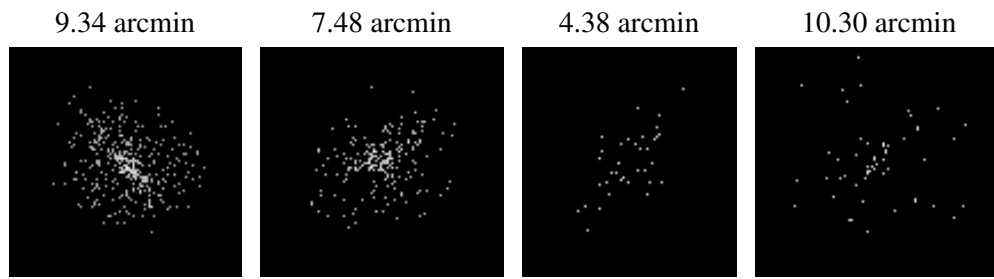
2.5.2 Slot 1



2.5.3 Slot 2



3 Point Sources



A Summary

A.1 Status

V&V Scientist	Jen Lauer
V&V Date (YYYY-MM-DD)	2007.06.07
V&V Edition	1
V&V Disposition and Status	OK
V&V Charge Time	10.092

A.2 Comments