

V&V Reference Report

L2 ASCDS Version : 7.6.7.2

Observation 4704 - L2 Version 001
Chandra X-Ray Center

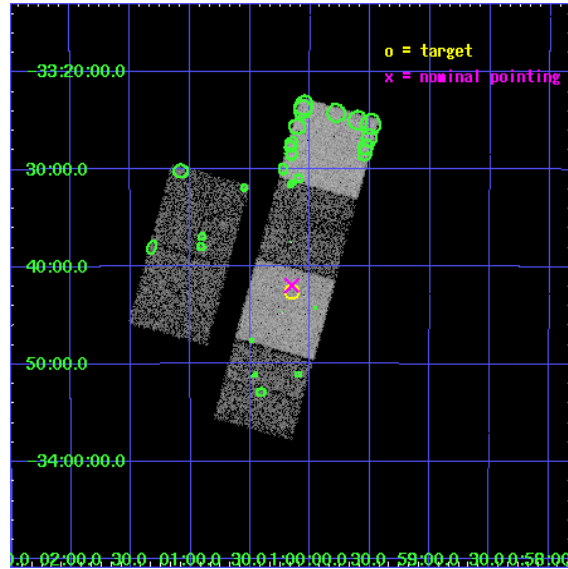
L2 Processing Date : Apr 29 2006

Contents

1	Front	2
2	OBI	3
2.1	OBI	3
2.1.1	Images	3
2.1.2	Bias	3
2.1.3	Parameters	4
2.1.4	Events	4
2.2	Compared Parameters	5
2.3	Aspect	6
2.4	Star Slots	9
2.4.1	Slot 3	9
2.4.2	Slot 4	10
2.4.3	Slot 5	11
2.4.4	Slot 6	12
2.4.5	Slot 7	13
2.5	FID Slots	14
2.5.1	Slot 0	14
2.5.2	Slot 1	15
2.5.3	Slot 2	16
3	Point Sources	17
A	Summary	18
A.1	Status	18
A.2	Comments	18

1 Front

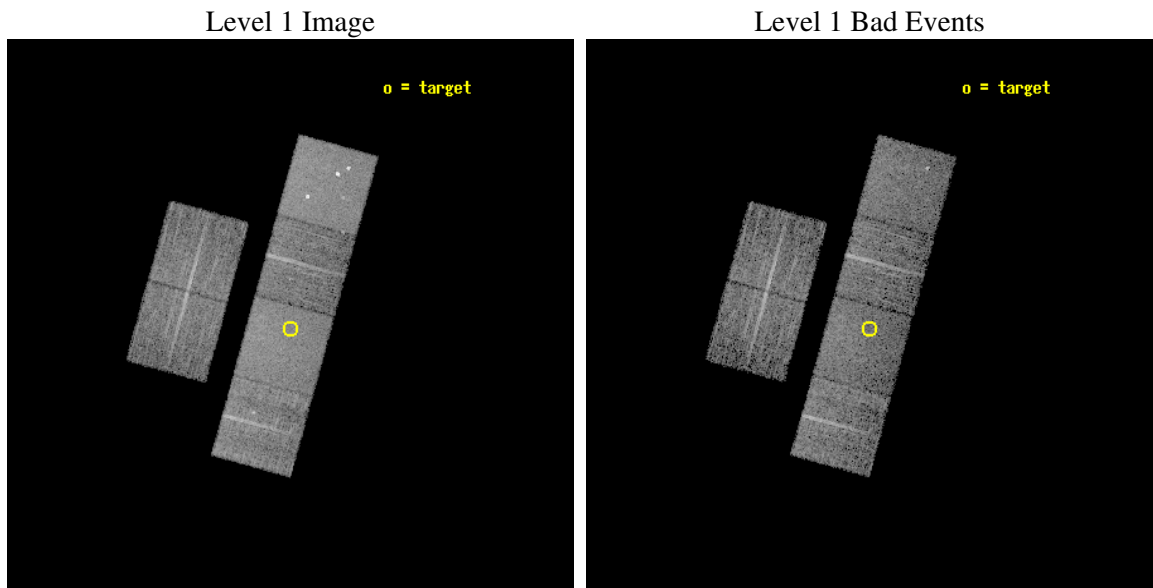
seq_num	600359
obs_id	4704
title	Using the Sculptor Dwarf Spheroidal Galaxy to Constrain X-ray Binary Production in Population II
observer	Dr. Thomas Maccarone
object	SCULPTOR DWARF SPHEROIDAL
dtcycle	0
cycle	P
ra_targ	15.039167
dec_targ	-33.708889
ra_nom	15.038033811677
dec_nom	-33.699239281042
roll_nom	105.43388357286
revision	2
ontime	5990.399977684
livetime	5914.5459261808
ontime2	5990.399977684
ontime3	5990.399977684
ontime5	5990.399977684
ontime6	5987.1590074003
ontime7	5990.399977684
ontime8	5990.399977684
l2events	68932



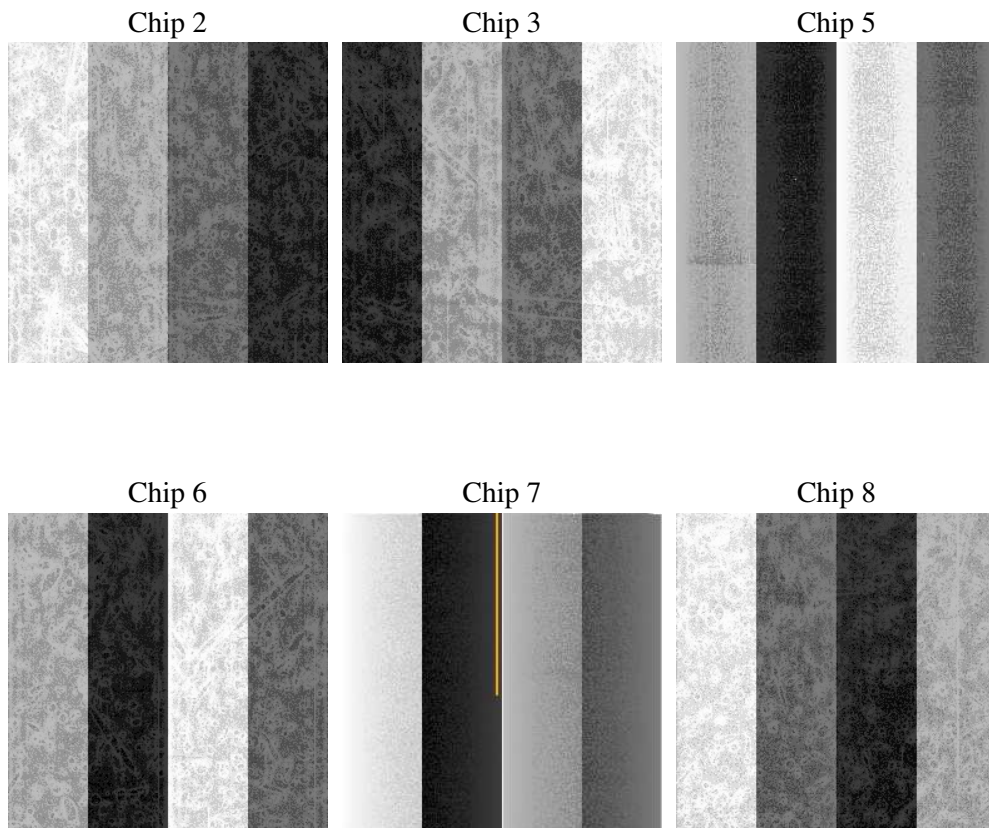
2 OBI

2.1 OBI

2.1.1 Images



2.1.2 Bias



2.1.3 Parameters

obi_num	1
ascdsver	7.6.7.2
caldbver	3.2.1
date	2006-04-29T16:54:53
revision	2

sched_exp_time	6000.000000
ontime	5995.852956295
ontime2	5995.8529264033
ontime3	5995.852956295
ontime5	5995.852956295
ontime6	5992.6119860113
ontime7	5995.852956295
ontime8	5995.852956295
l1events	316692

2.1.4 Events

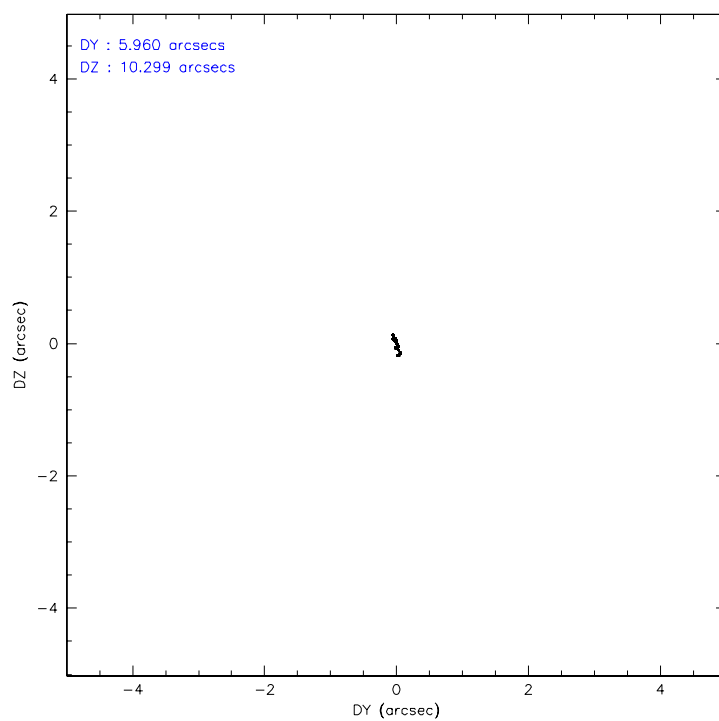
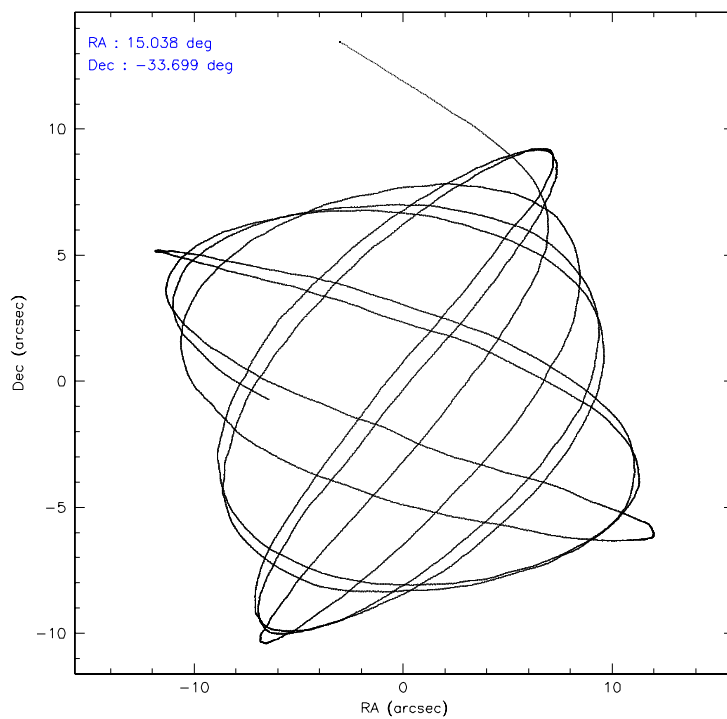
	ccd 2	ccd 3	ccd 5	ccd 6	ccd 7	ccd 8
level 1 events	44802	42836	69180	44186	60057	55631
rejected events	39562	37537	37201	38877	37262	43365
rejected %	88%	87%	53%	87%	62%	77%

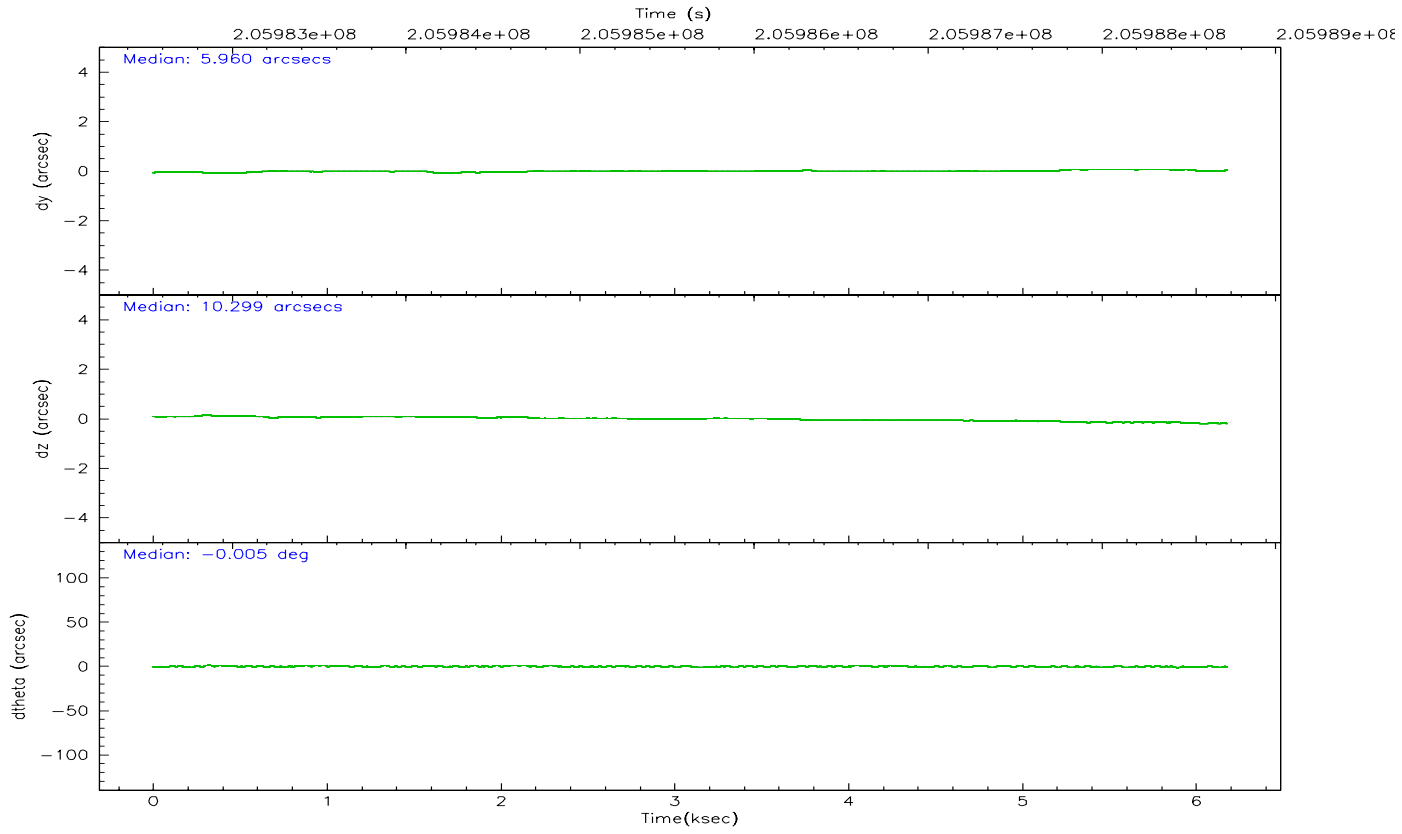
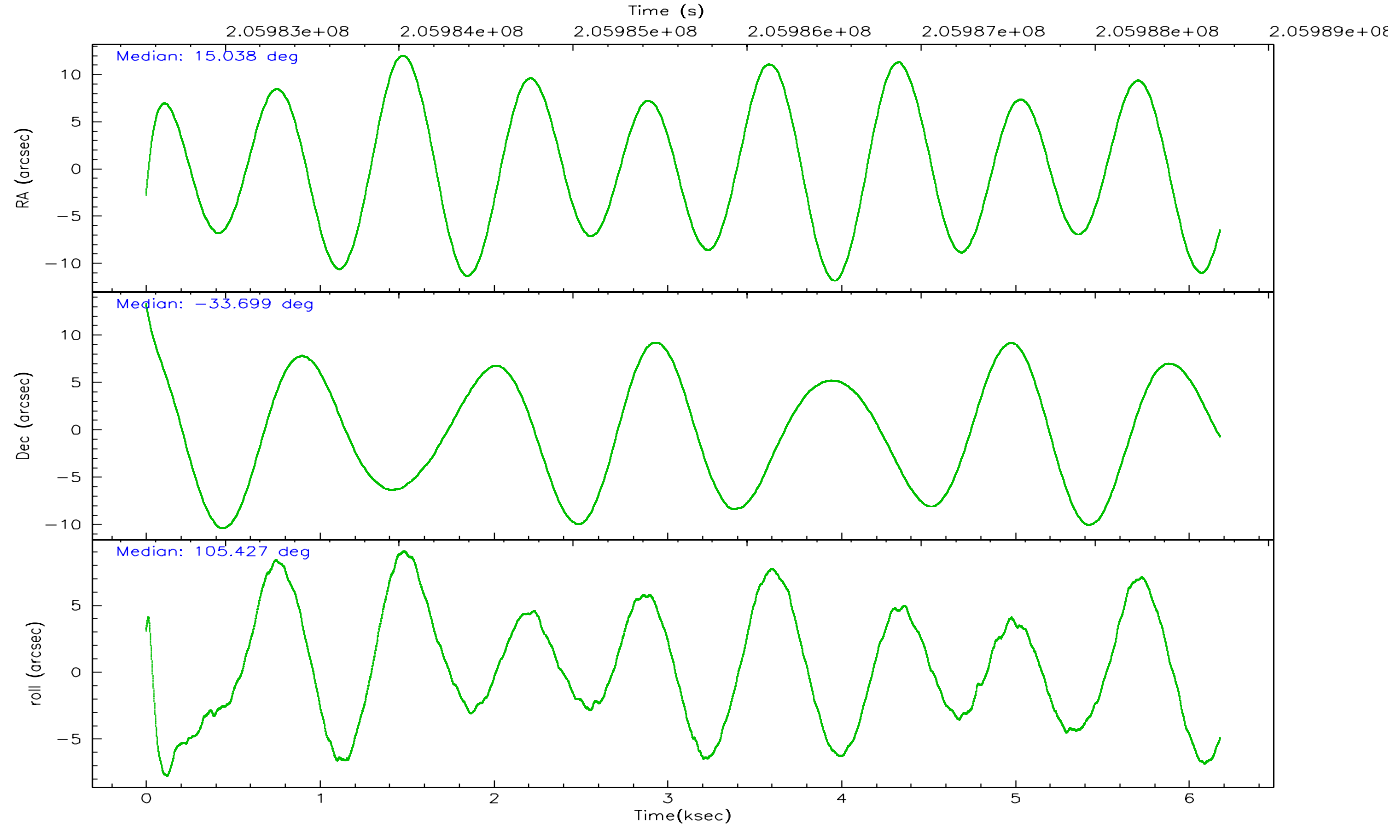
	ccd 2	ccd 3	ccd 5	ccd 6	ccd 7	ccd 8
grade 0 events	2399	2369	4783	2100	1252	3903
	5%	5%	6%	4%	2%	7%
grade 1 events	33	34	52	21	45	38
	0%	0%	0%	0%	0%	0%
grade 2 events	1057	992	9346	1101	5647	2650
	2%	2%	13%	2%	9%	4%
grade 3 events	451	472	636	524	1088	1380
	1%	1%	0%	1%	1%	2%
grade 4 events	469	530	563	520	1071	1209
	1%	1%	0%	1%	1%	2%
grade 5 events	1763	1889	3283	2044	3938	2554
	3%	4%	4%	4%	6%	4%
grade 6 events	870	939	16679	1068	13766	3135
	1%	2%	24%	2%	22%	5%
grade 7 events	37760	35611	33838	36808	33250	40762
	84%	83%	48%	83%	55%	73%

2.2 Compared Parameters

Parameter	Planned	Actual	Parameter	Planned	Actual
Instrument	ACIS	ACIS	Obspar format version number	6	6
Detector	ACIS-235678	ACIS-235678	Obspar file type	PREDICTED	ACTUAL
Grating	NONE	NONE	Obspar update status	NONE	UPDATED
Data mode	VFAINT	VFAINT	On-chip summing requested	N	N
Observation mode	POINTING	POINTING	Subarray requested	NONE	NONE
Pointing RA	15.061715	15.03803381167713	Alternating exposures requested	N	N
Pointing Dec	-33.718107	-33.69923928104183	Primary exposure time	0.000000	3.2
Pointing Roll	105.290355	105.4338835728558			
SIM focus pos (mm)	-0.684267	-0.6828225247311905			
SIM defocus (mm)	0	0.001444936568705701			
SIM translation stage pos (mm)	-190.132523	-190.1425803651734			
SIM translation stage offset (mm)	0	0.01005778216563158			
Observation start time	205982722.184000	205981745.70627			
Observation start date	2004-07-12T01:24:18	2004-07-12T01:09:05			
Observation end time	205988722.184000	205990232.19415			
Observation end date	2004-07-12T03:04:18	2004-07-12T03:30:32			
Read mode	TIMED	TIMED			

2.3 Aspect



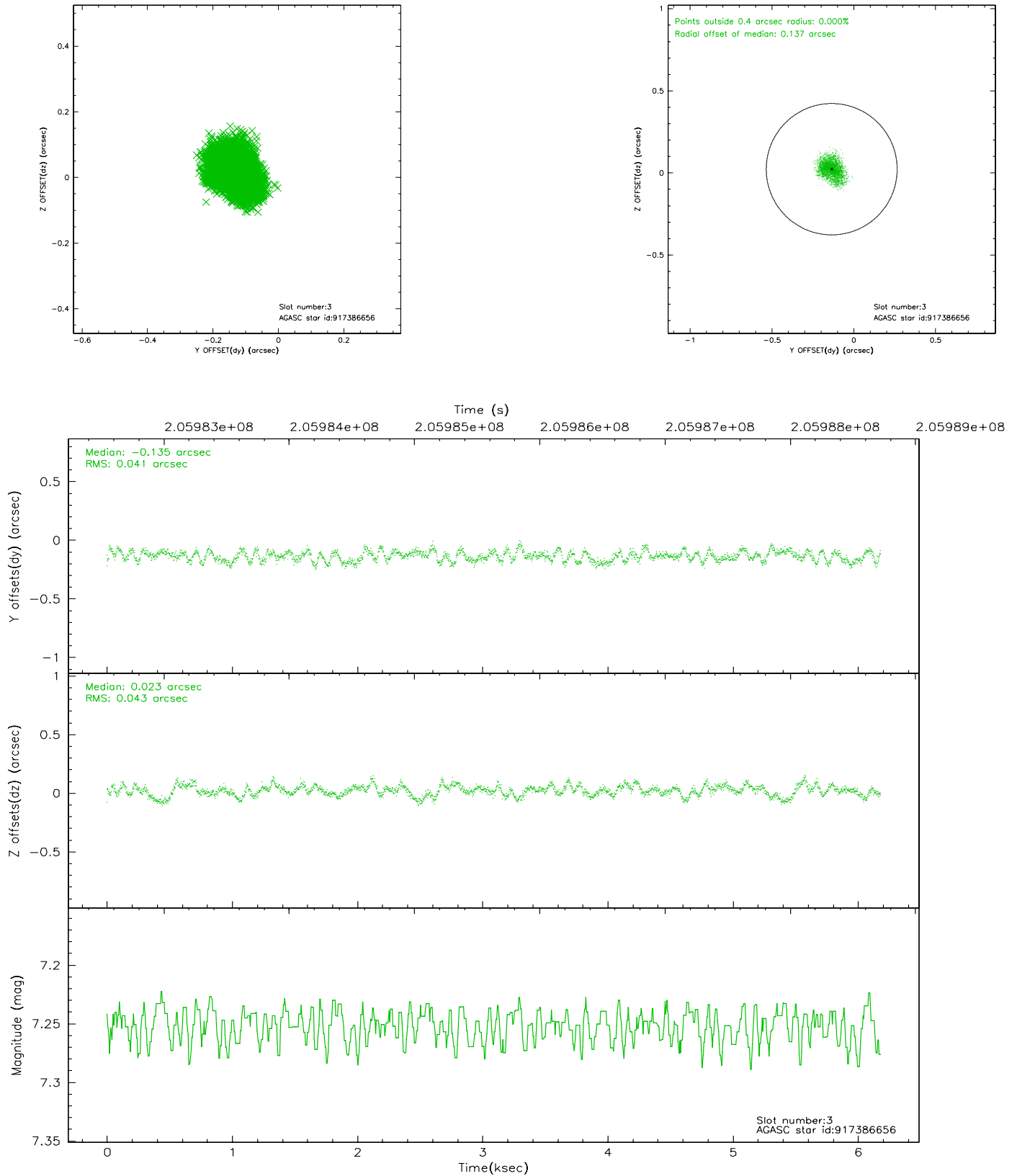


Slot Statistics

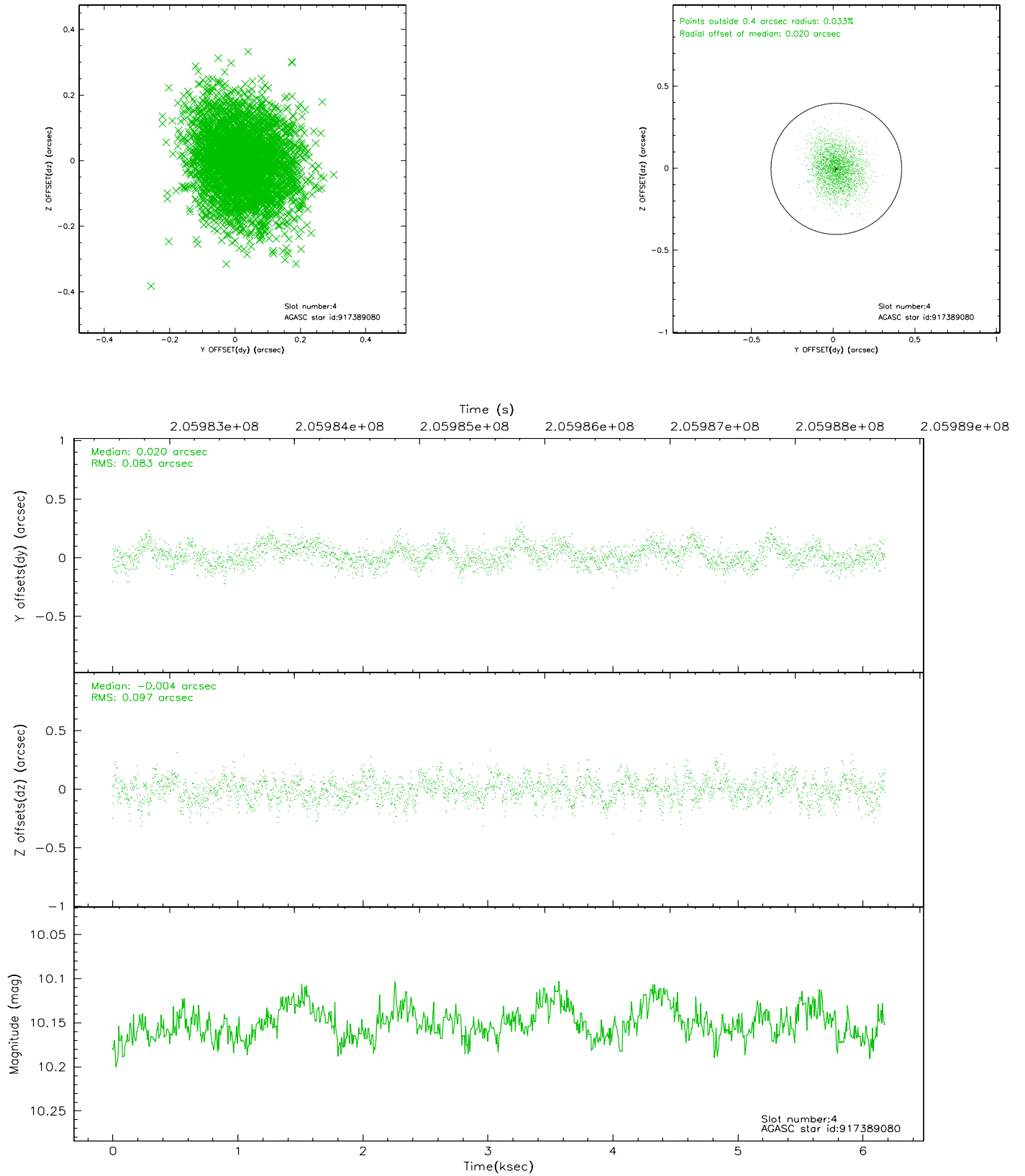
slot	status	id	mag	n_pts	med_dy	med_dz	dr1	dr2	ra	dec	mean_y	mean_z
0	FID	ACIS-S-1	7.18	1508	-0.008	-0.004	0.007	0.012	0.000000	0.000000	937.33	-1727.13
1	FID	ACIS-S-5	7.23	1508	-0.036	-0.007	0.006	0.010	0.000000	0.000000	-1811.14	169.46
2	FID	ACIS-S-6	7.35	1508	0.022	0.023	0.007	0.014	0.000000	0.000000	401.91	814.51
3	GUIDE	917386656	7.25	3016	-0.135	0.023	0.065	0.102	15.342124	-33.359890	1020.55	-1152.78
4	GUIDE	917389080	10.15	3012	0.020	-0.004	0.137	0.221	15.722484	-33.662555	-334.71	-1961.08
5	GUIDE	917389288	9.56	3010	-0.103	0.138	0.109	0.178	15.394706	-33.185862	1582.03	-1472.70
6	GUIDE	917639416	10.01	3015	0.017	0.088	0.129	0.203	15.947780	-34.008495	-1715.91	-2272.37
7	GUIDE	917651048	9.64	3013	0.209	-0.242	0.122	0.196	14.655628	-34.424089	-2136.49	1833.13

2.4 Star Slots

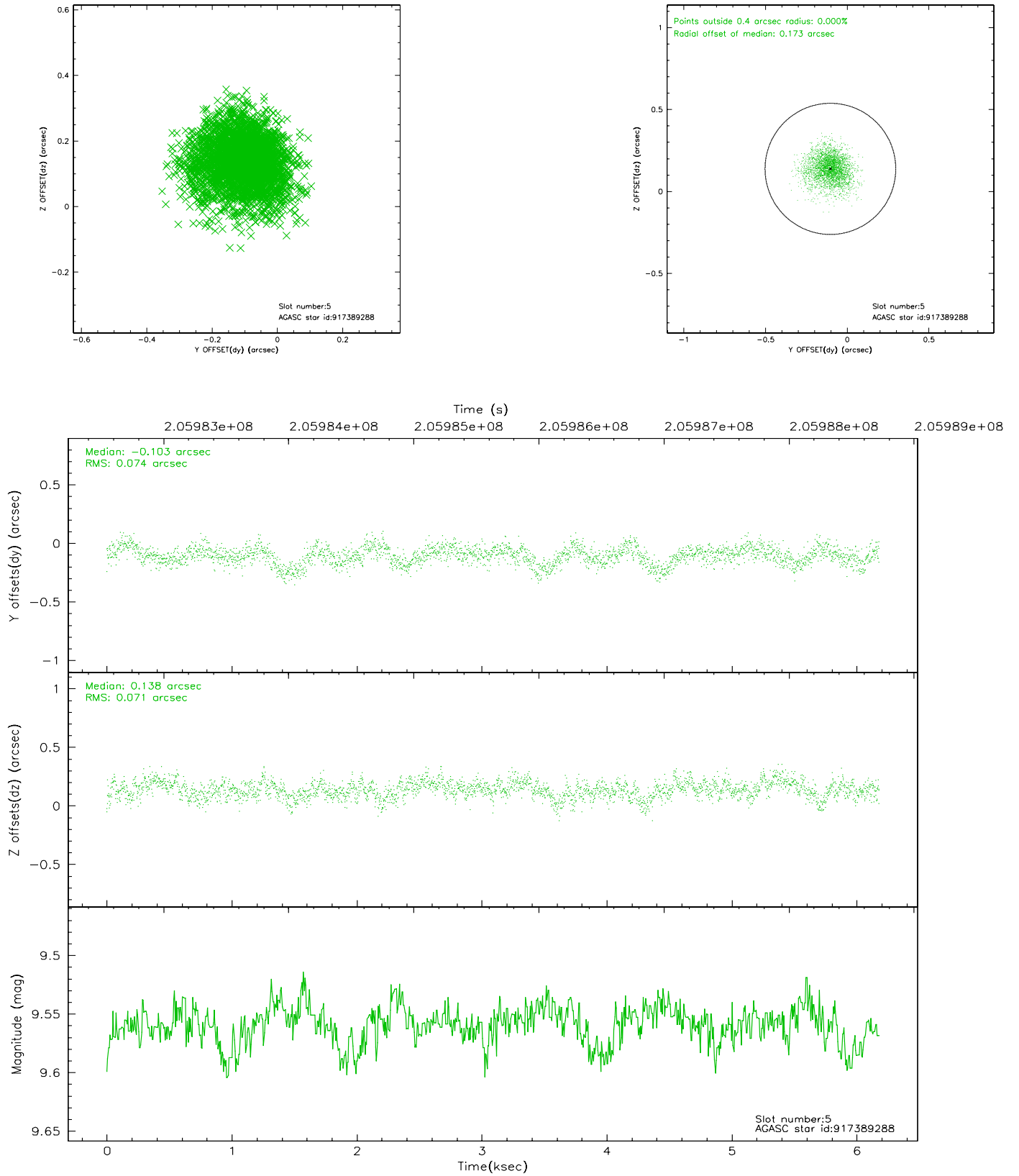
2.4.1 Slot 3



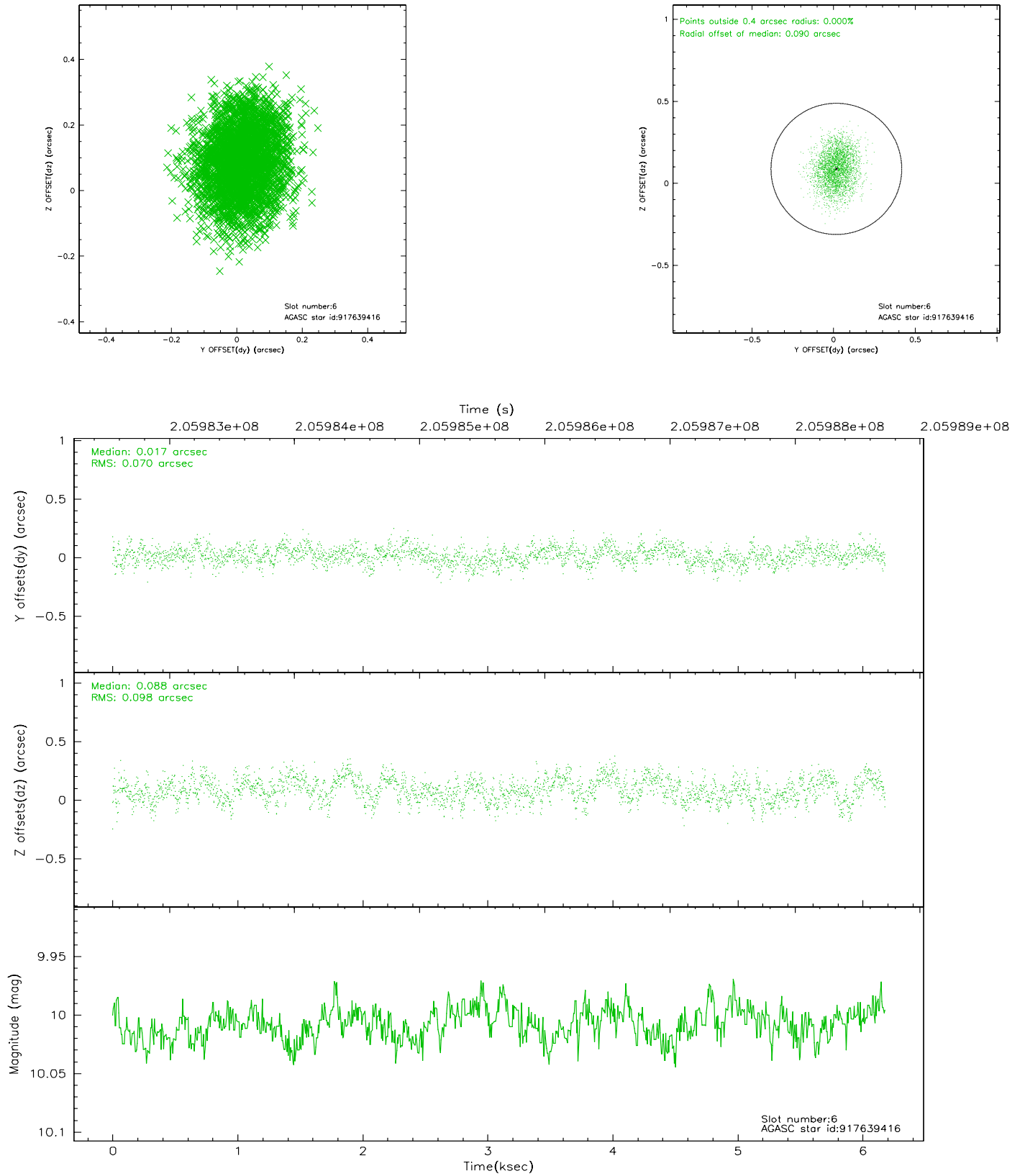
2.4.2 Slot 4



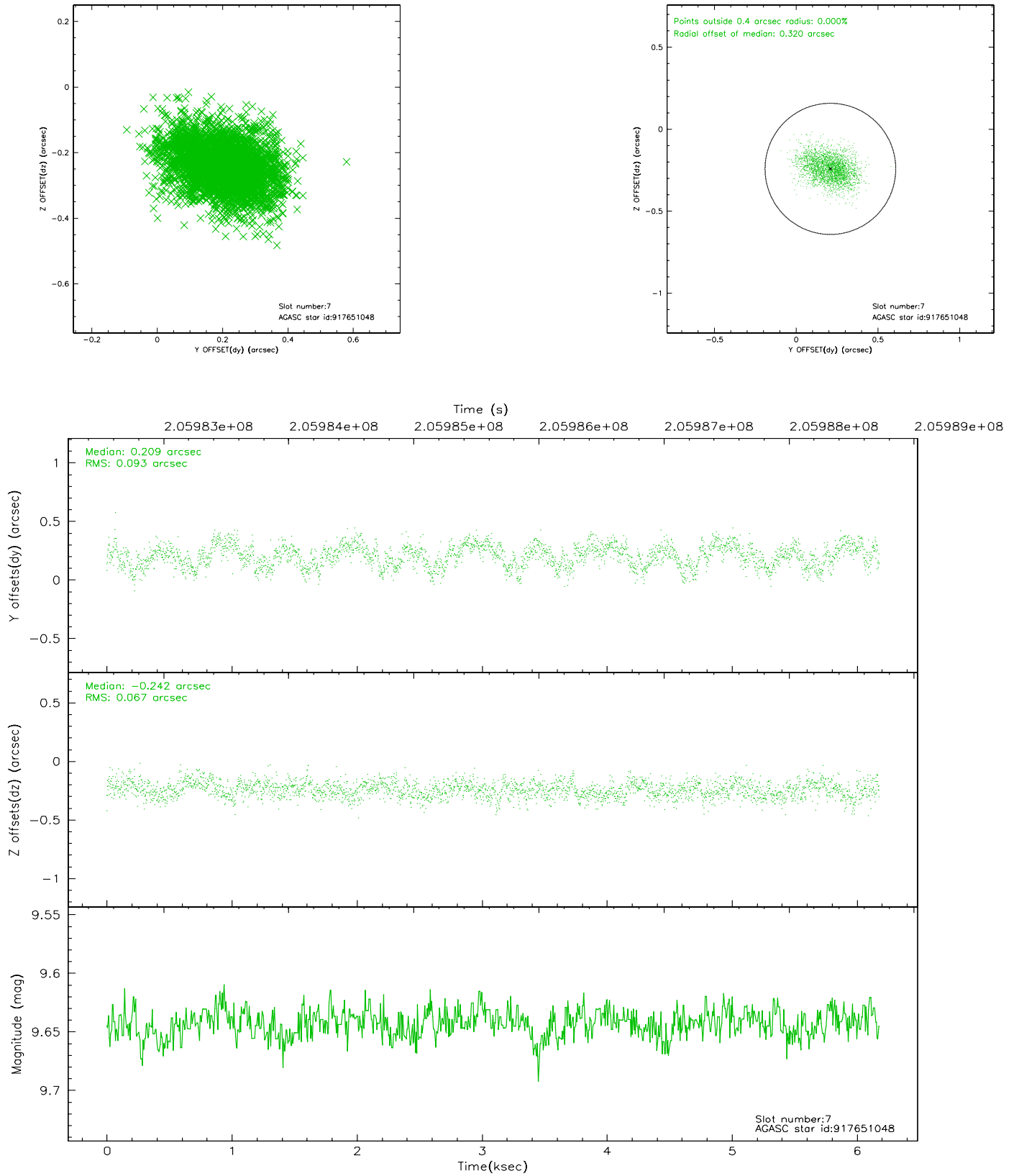
2.4.3 Slot 5



2.4.4 Slot 6

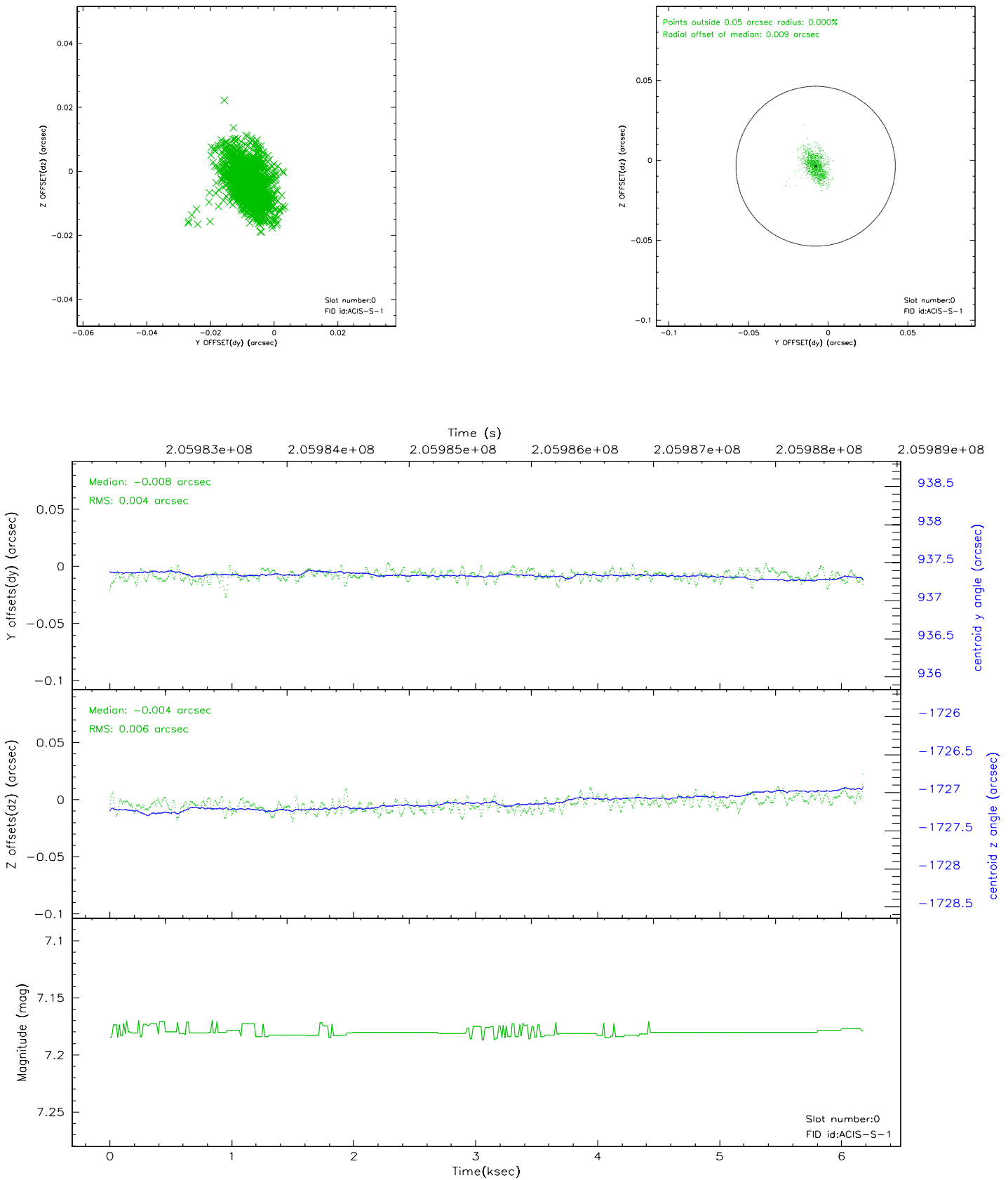


2.4.5 Slot 7

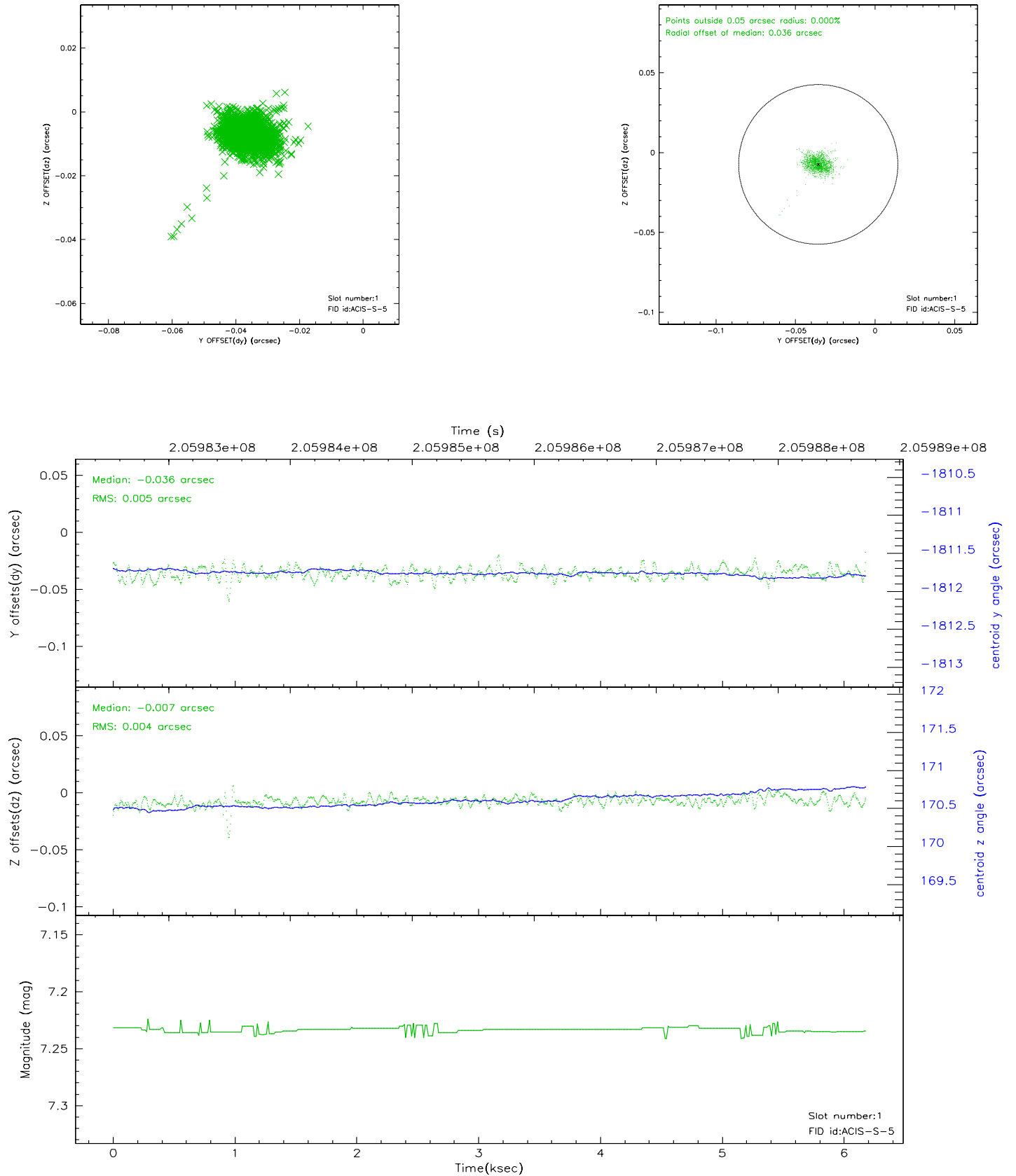


2.5 FID Slots

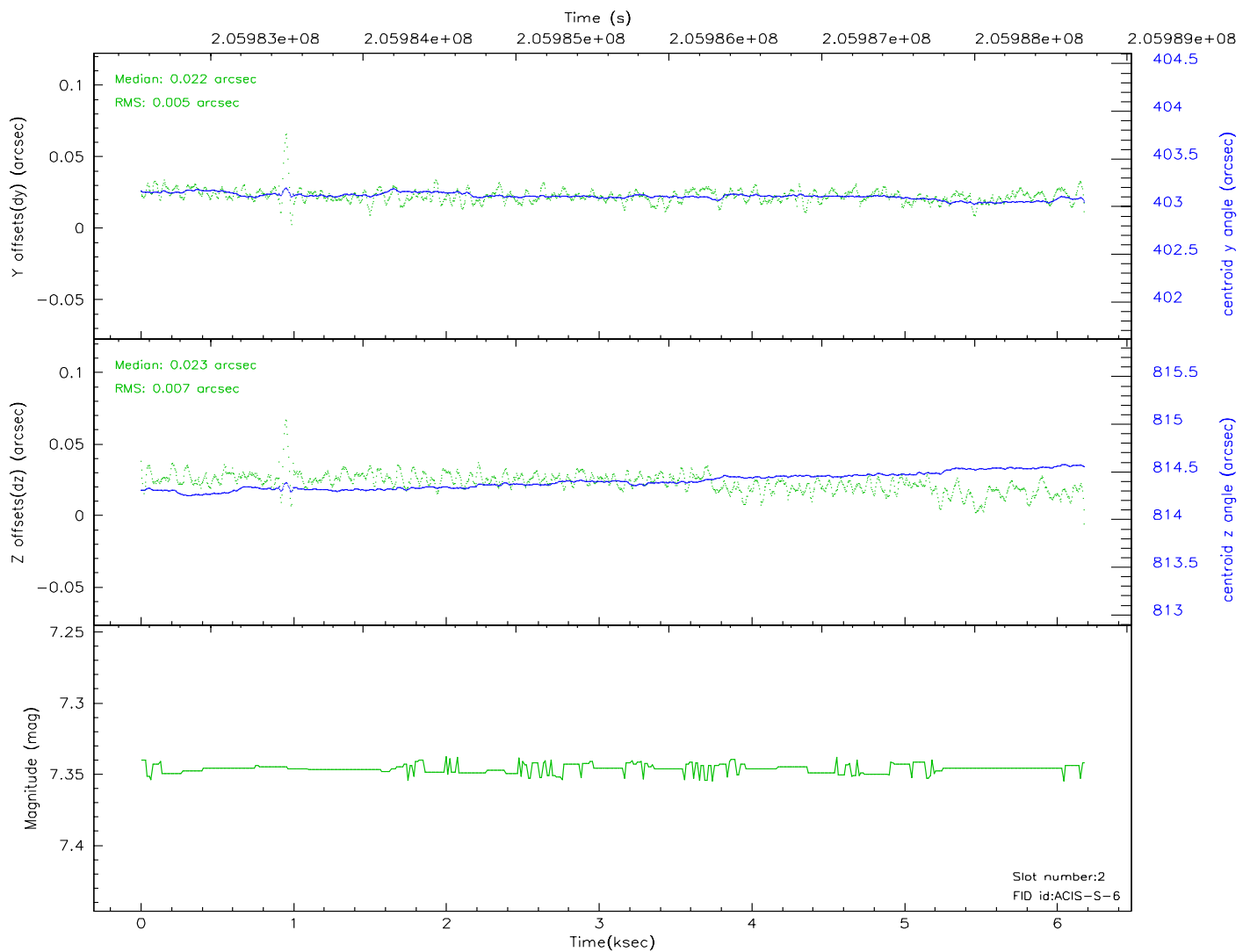
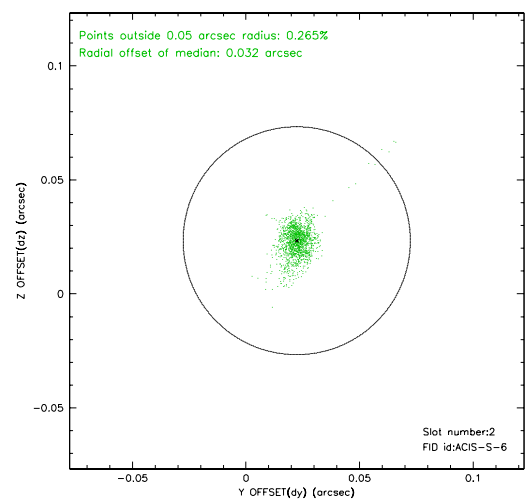
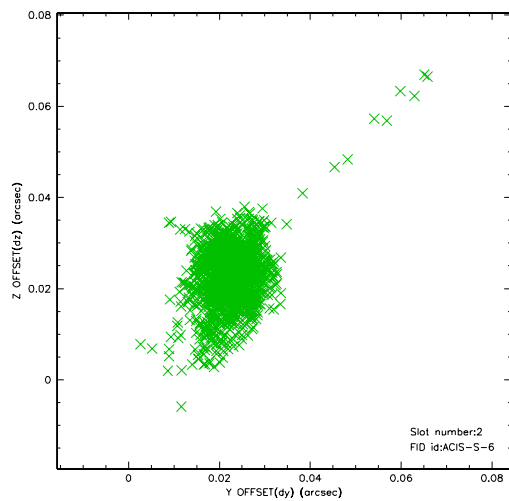
2.5.1 Slot 0



2.5.2 Slot 1



2.5.3 Slot 2



3 Point Sources

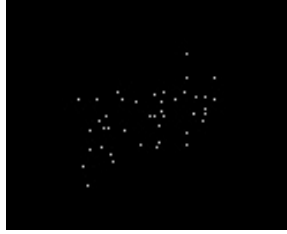
9.98 arcmin



18.49 arcmin



2.92 arcmin



16.44 arcmin



A Summary

A.1 Status

V&V Scientist	Jen Lauer
V&V Date (YYYY-MM-DD)	2006.04.30
V&V Edition	1
V&V Disposition and Status	OK
V&V Charge Time	5.99

A.2 Comments

Monitor constraint met.