

# V&V Reference Report

## L2 ASCDS Version : 7.6.7.2

Observation 4674 - L2 Version 001  
Chandra X-Ray Center

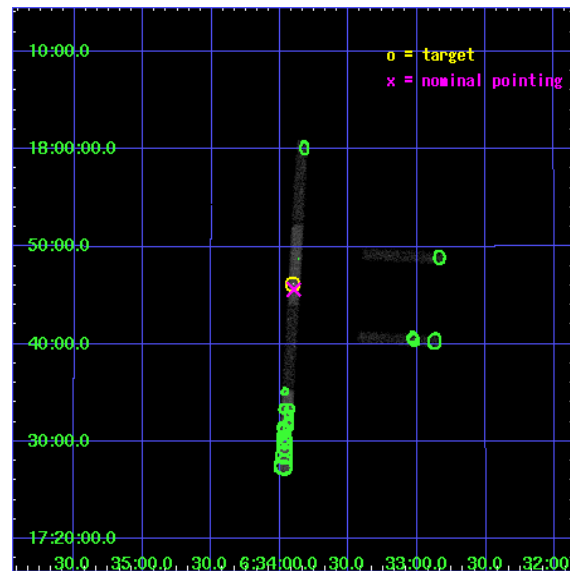
L2 Processing Date : Jun 4 2006

## Contents

<b>1</b>	<b>Front</b>	<b>2</b>
<b>2</b>	<b>OBI</b>	<b>3</b>
2.1	OBI . . . . .	3
2.1.1	Images . . . . .	3
2.1.2	Bias . . . . .	3
2.1.3	Parameters . . . . .	4
2.1.4	Events . . . . .	4
2.2	Compared Parameters . . . . .	5
2.3	Aspect . . . . .	6
2.4	Star Slots . . . . .	9
2.4.1	Slot 3 . . . . .	9
2.4.2	Slot 4 . . . . .	10
2.4.3	Slot 5 . . . . .	11
2.4.4	Slot 6 . . . . .	12
2.4.5	Slot 7 . . . . .	13
2.5	FID Slots . . . . .	14
2.5.1	Slot 0 . . . . .	14
2.5.2	Slot 1 . . . . .	15
2.5.3	Slot 2 . . . . .	16
<b>3</b>	<b>Point Sources</b>	<b>17</b>
<b>A</b>	<b>Summary</b>	<b>18</b>
A.1	Status . . . . .	18
A.2	Comments . . . . .	18

# 1 Front

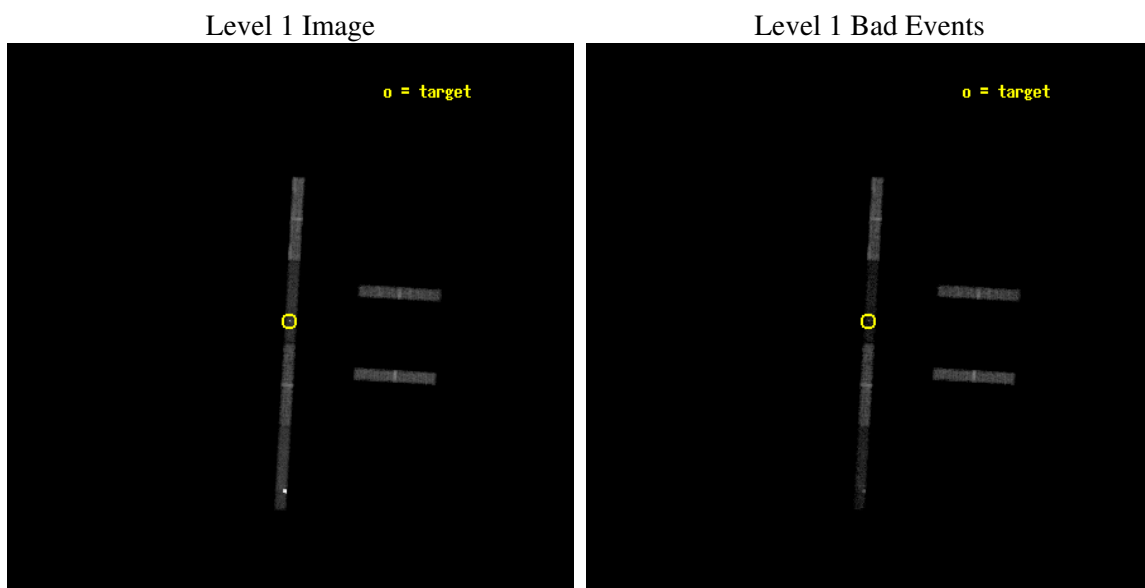
seq_num	500493
obs_id	4674
title	The Geminga Pulsar and its Pulsar Wind Nebula
observer	Dr. Divas Sanwal
object	Geminga
dtcycle	0
cycle	P
ra_targ	98.475833
dec_targ	17.77
ra_nom	98.474640793274
dec_nom	17.760431040971
roll_nom	273.26246733207
revision	2
ontime	19898.199661136
livetime	18796.205012948
ontime2	19898.199661136
ontime3	19898.199661136
ontime5	19898.199661136
ontime6	19898.199661136
ontime7	19898.199661136
ontime8	19897.458621144
l2events	14386



## 2 OBI

### 2.1 OBI

#### 2.1.1 Images



#### 2.1.2 Bias

Chip 2

Chip 3

Chip 5



Chip 6

Chip 7

Chip 8



### 2.1.3 Parameters

obi_num	0
ascdsver	7.6.7.2
caldsver	3.2.2
date	2006-06-04T13:14:25
revision	2

sched_exp_time	19738.000000
ontime	20642.221462607
ontime2	20642.221482515
ontime3	20642.221462607
ontime5	20642.221482515
ontime6	20642.221462607
ontime7	20642.221462607
ontime8	20641.480422616
l1events	120903

### 2.1.4 Events

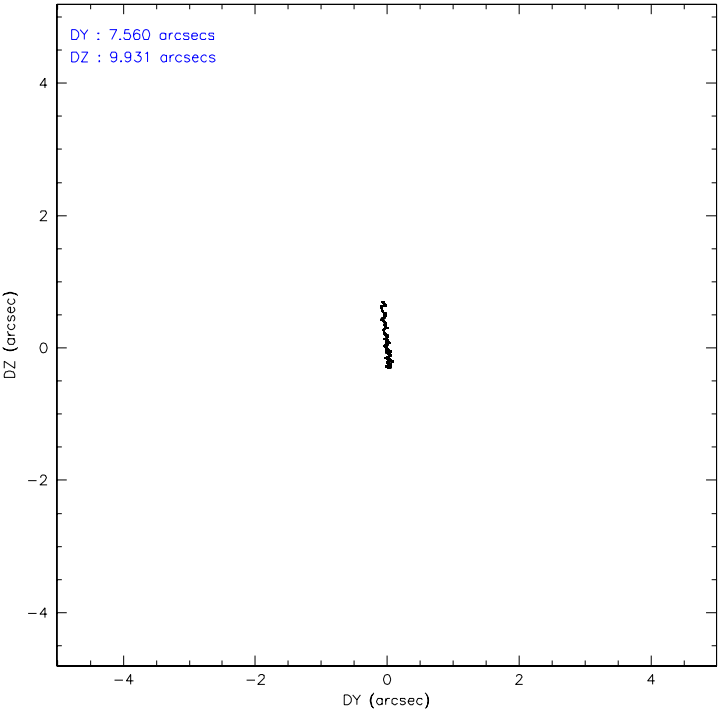
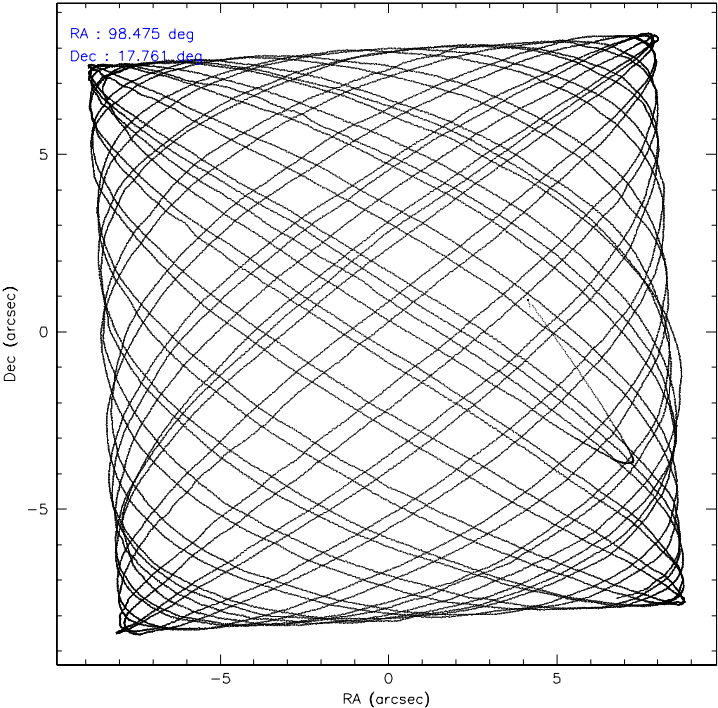
	ccd 2	ccd 3	ccd 5	ccd 6	ccd 7	ccd 8
level 1 events	18872	16142	36442	16671	9290	23486
rejected events	17521	14907	6086	15220	3962	19705
rejected %	92%	92%	16%	91%	42%	83%

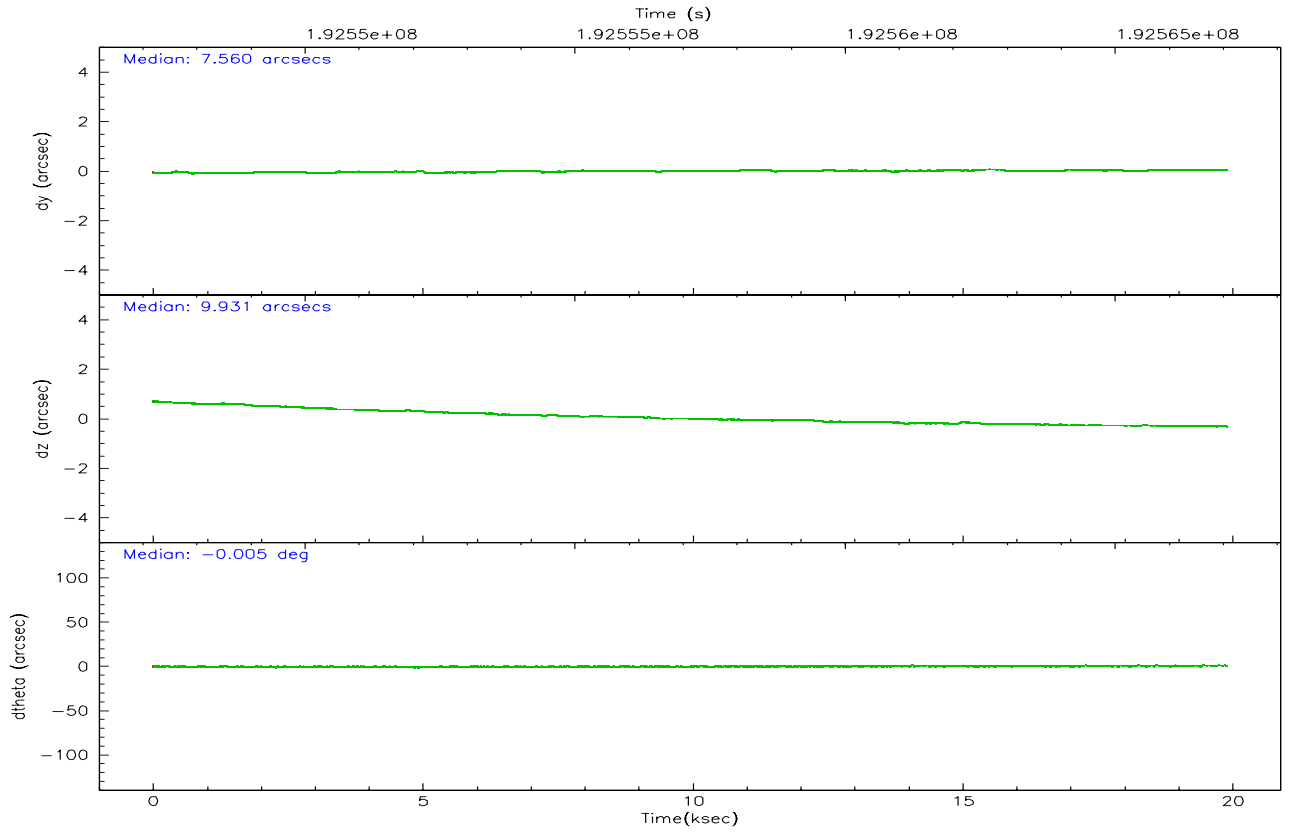
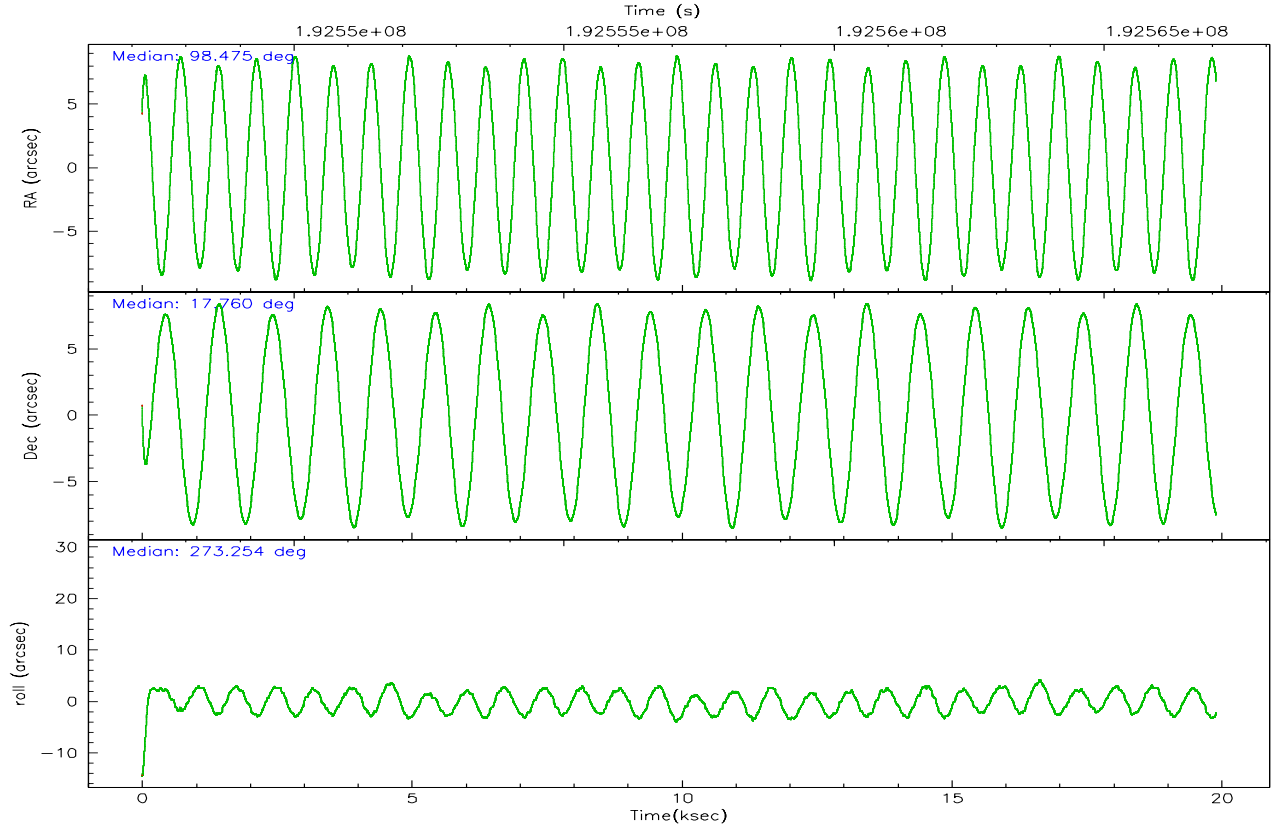
	ccd 2	ccd 3	ccd 5	ccd 6	ccd 7	ccd 8
grade 0 events	382	356	14088	446	863	520
	2%	2%	38%	2%	9%	2%
grade 1 events	3	1	113	6	22	3
	0%	0%	0%	0%	0%	0%
grade 2 events	255	199	8830	228	1464	827
	1%	1%	24%	1%	15%	3%
grade 3 events	289	285	202	308	541	479
	1%	1%	0%	1%	5%	2%
grade 4 events	298	266	3435	331	448	441
	1%	1%	9%	1%	4%	1%
grade 5 events	242	248	742	257	808	451
	1%	1%	2%	1%	8%	1%
grade 6 events	181	167	4944	198	2176	1630
	0%	1%	13%	1%	23%	6%
grade 7 events	17222	14620	4088	14897	2968	19135
	91%	90%	11%	89%	31%	81%

## 2.2 Compared Parameters

Parameter	Planned	Actual	Parameter	Planned	Actual
Instrument	ACIS	ACIS	Obspar format version number	6	6
Detector	ACIS-235678	ACIS-235678	Obspar file type	PREDICTED	ACTUAL
Grating	NONE	NONE	Obspar update status	NONE	UPDATED
Data mode	FAINT	FAINT	On-chip summing requested	N	N
Observation mode	POINTING	POINTING	Subarray requested	1/8	1/8
Pointing RA	98.458618	98.47464079327418	Subarray start row	0	449
Pointing Dec	17.782967	17.76043104097085	Subarray row count	1024	128
Pointing Roll	273.110735	273.2624673320722	Alternating exposures requested	N	N
SIM focus pos (mm)	-0.684267	-0.6828225247311905	Primary exposure time	0.000000	0.7
SIM defocus (mm)	0	0.001444936568705701			
SIM translation stage pos (mm)	-190.132523	-190.1425803651734			
SIM translation stage offset (mm)	0	0.01005778216563158			
Observation start time	192547340.184000	192546183.48942			
Observation start date	2004-02-07T13:21:16	2004-02-07T13:03:03			
Observation end time	192567078.184000	192568816.00291			
Observation end date	2004-02-07T18:50:14	2004-02-07T19:20:16			
Read mode	TIMED	TIMED			

2.3 Aspect





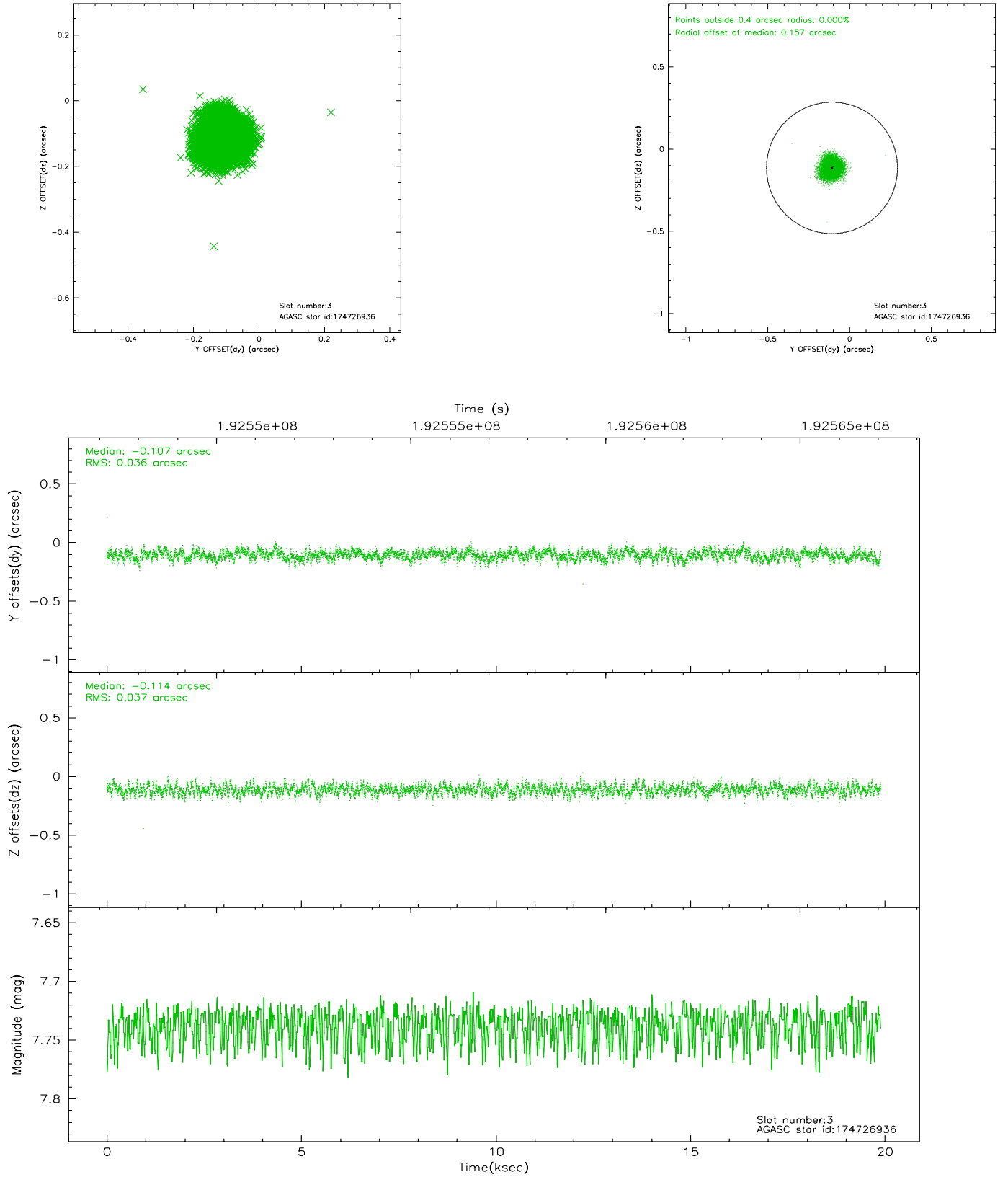
### Slot Statistics

slot	status	id	mag	n_pts	med_dy	med_dz	dr1	dr2	ra	dec	mean_y	mean_z
0	FID	ACIS-S-2	7.11	4854	-0.026	0.004	0.010	0.016	0.000000	0.000000	-760.31	-1731.21
1	FID	ACIS-S-4	7.20	4854	0.033	0.012	0.006	0.011	0.000000	0.000000	2152.90	177.15
2	FID	ACIS-S-5	7.24	4854	-0.037	-0.007	0.010	0.016	0.000000	0.000000	-1812.96	170.94
3	GUIDE	174726936	7.74	9708	-0.107	-0.114	0.055	0.086	98.009571	17.665063	338.89	-1561.02
4	GUIDE	174730168	8.12	9707	-0.175	0.110	0.064	0.100	98.803227	18.065078	-950.64	1232.87
5	GUIDE	174731792	7.94	9706	0.091	0.128	0.051	0.084	98.964622	17.200033	2187.73	1624.46
6	GUIDE	174591824	8.23	9706	0.165	-0.127	0.077	0.125	97.924040	17.082315	2417.24	-1973.36
7	GUIDE	174731032	8.87	9704	0.025	0.002	0.075	0.120	99.169475	17.388789	1545.16	2361.84

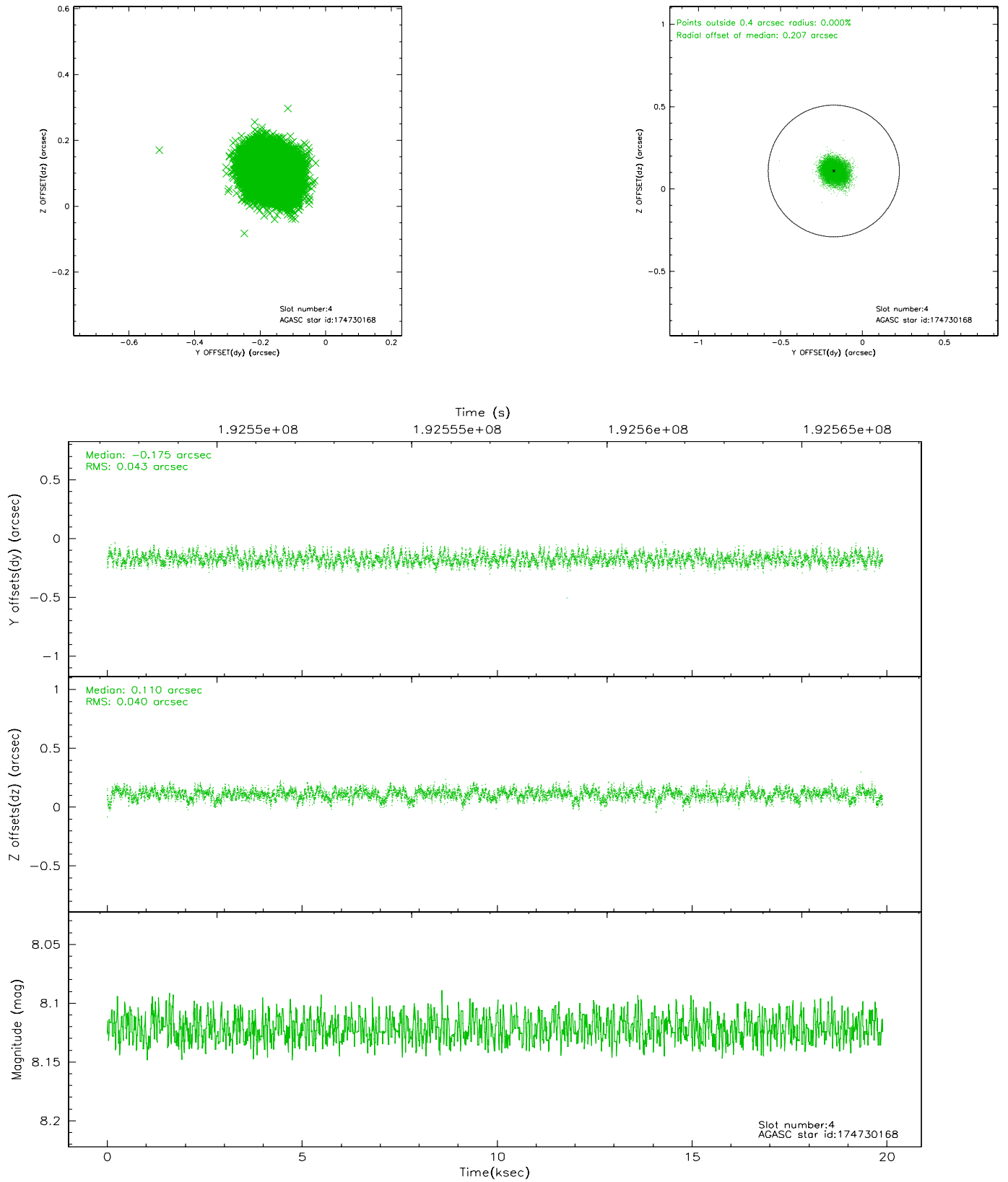


## 2.4 Star Slots

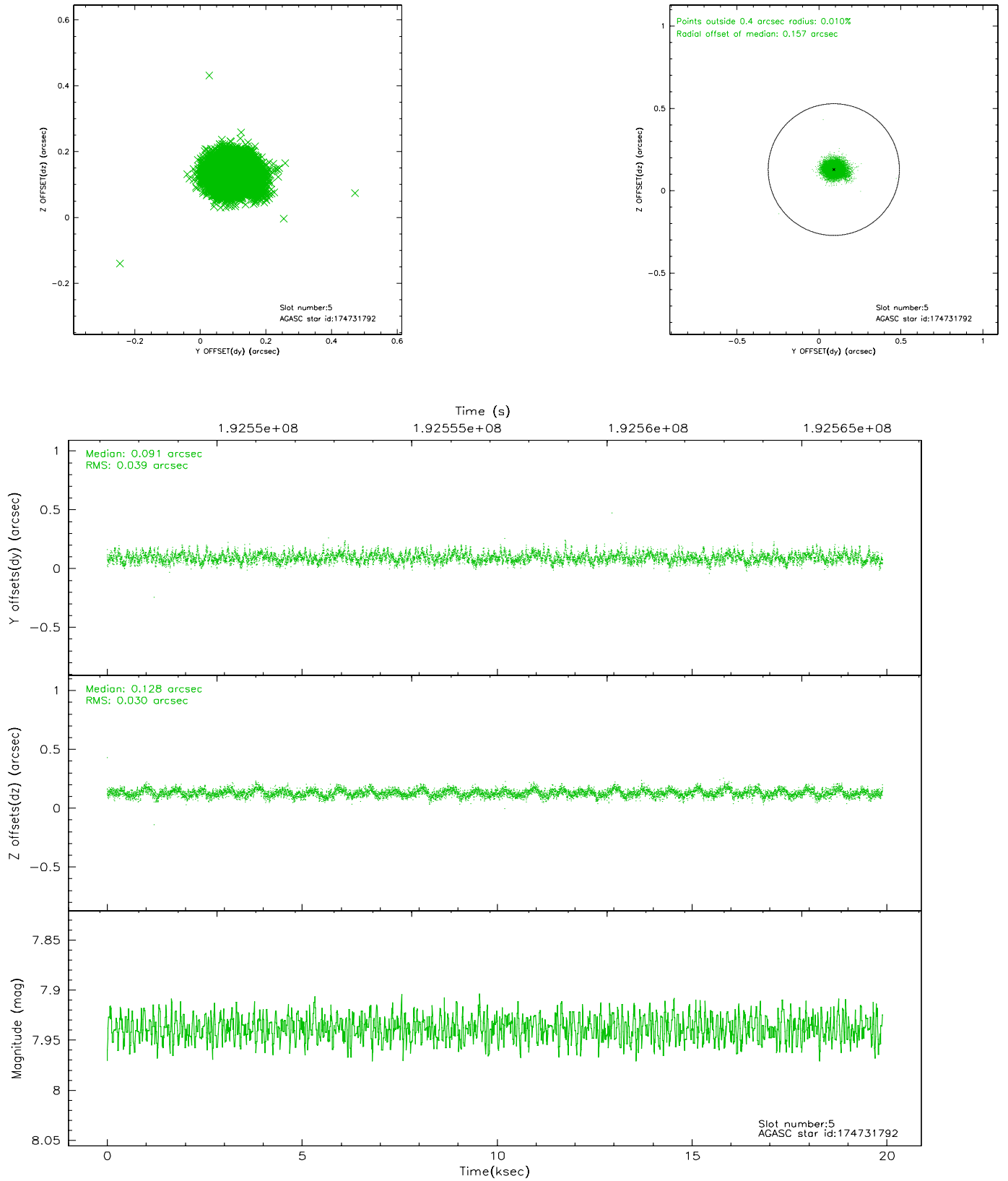
### 2.4.1 Slot 3



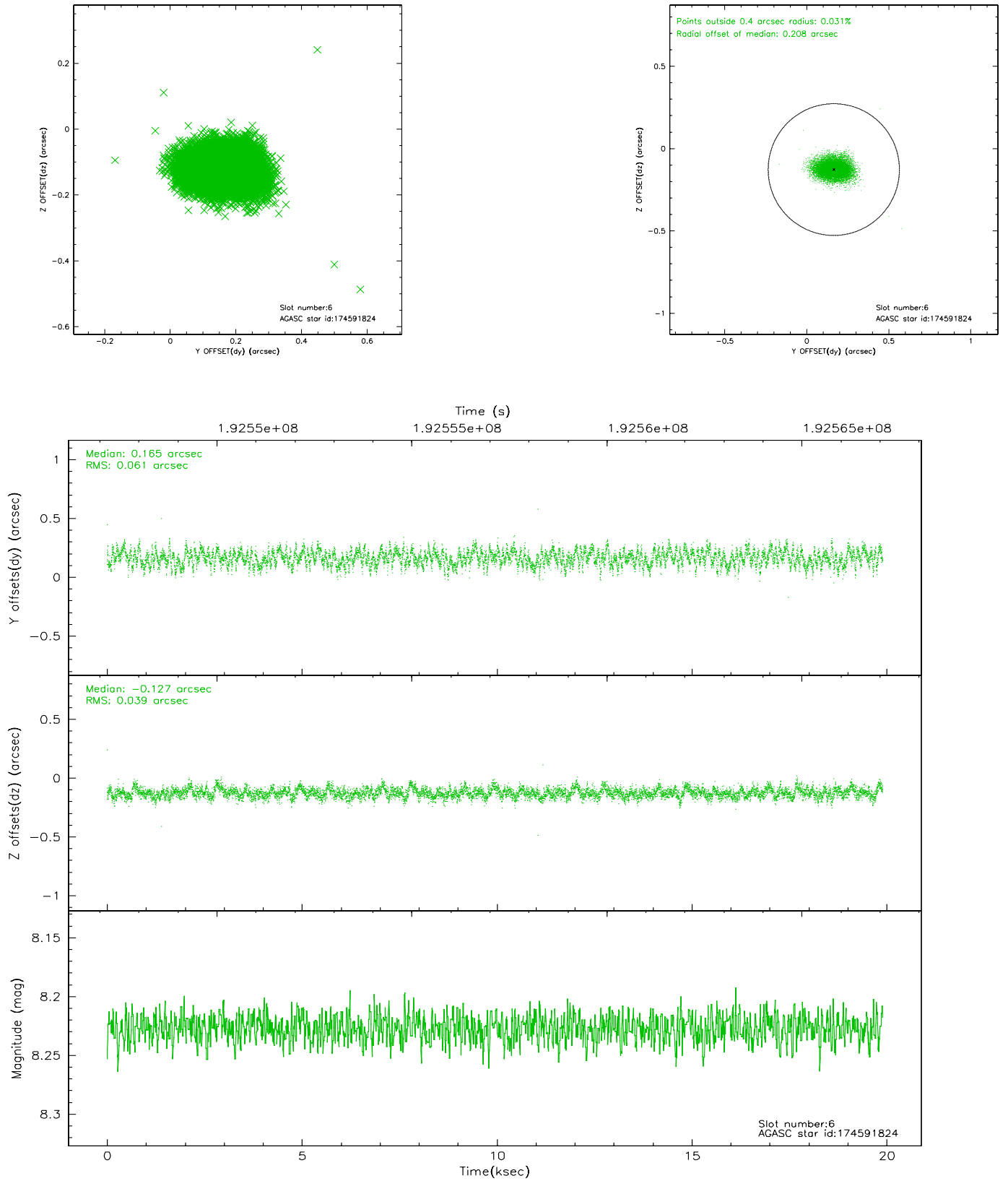
## 2.4.2 Slot 4



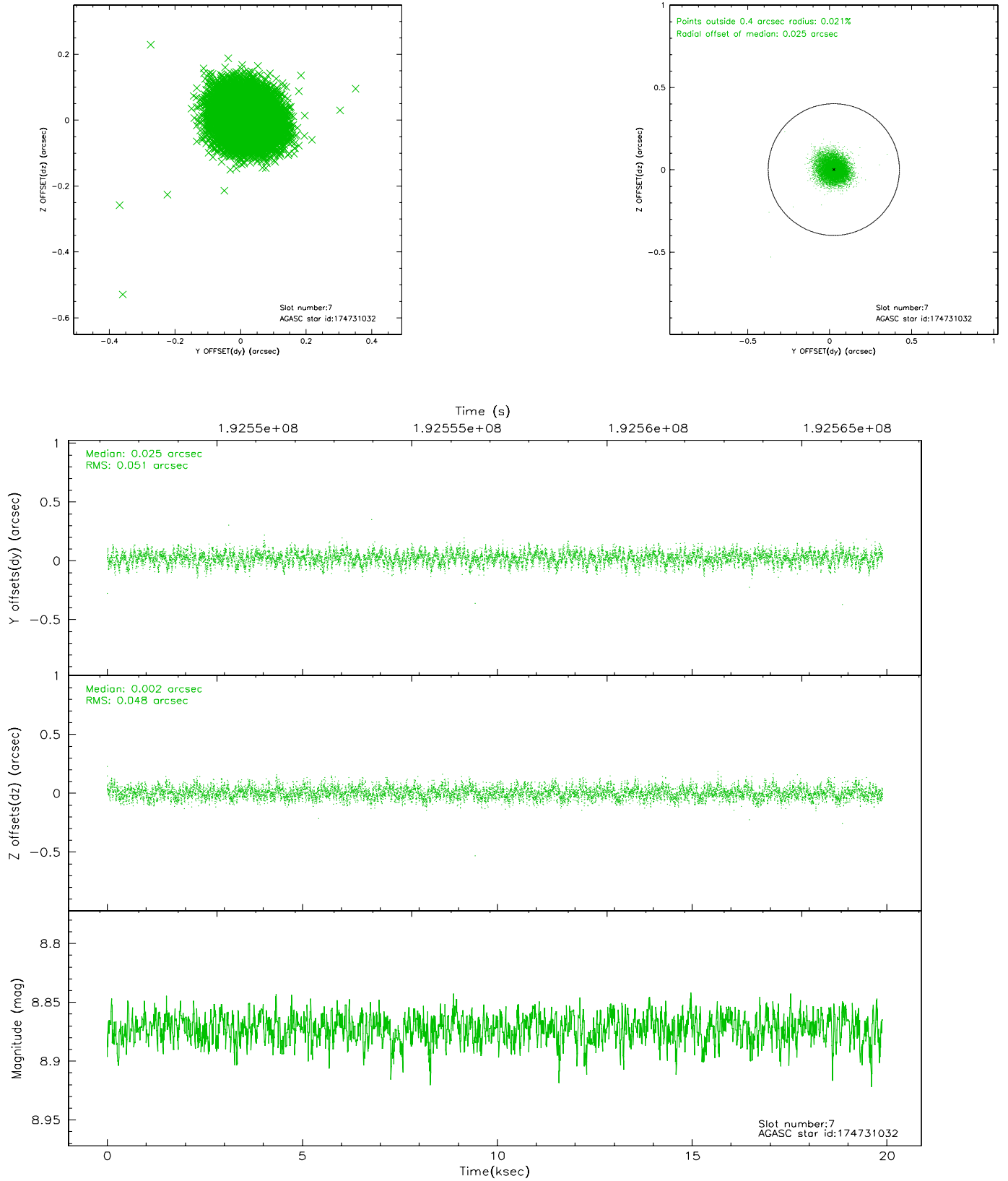
### 2.4.3 Slot 5



## 2.4.4 Slot 6

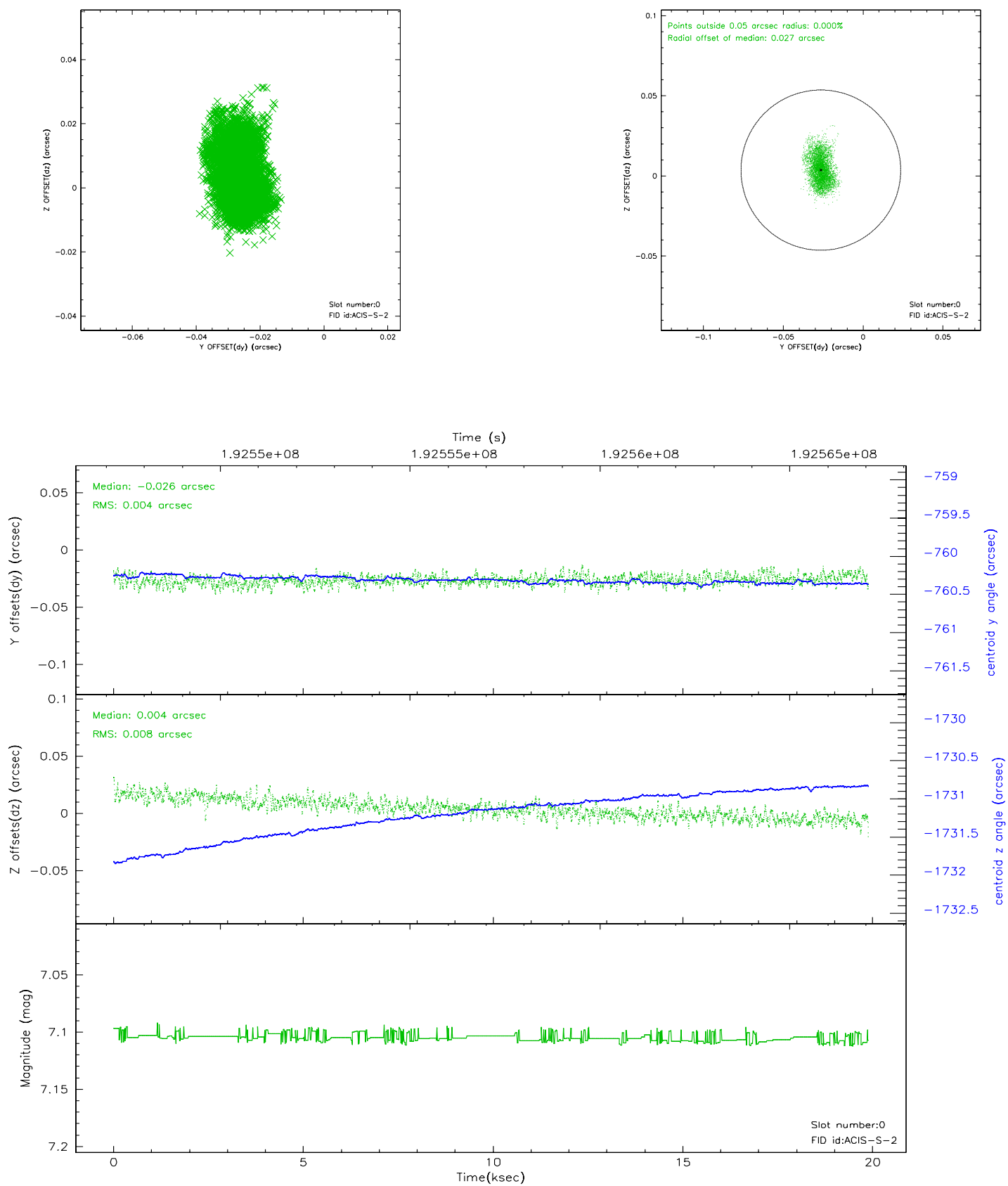


## 2.4.5 Slot 7

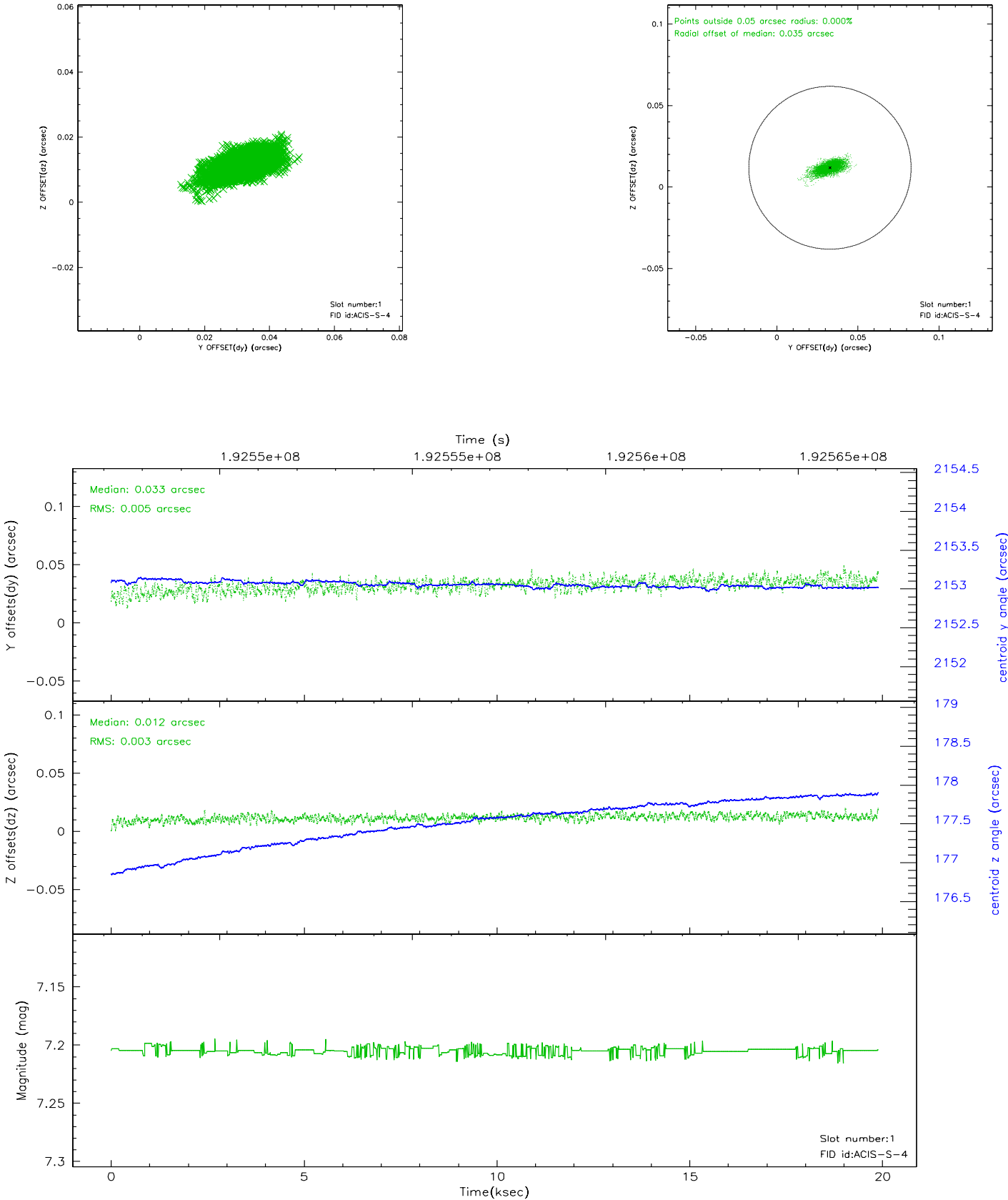


## 2.5 FID Slots

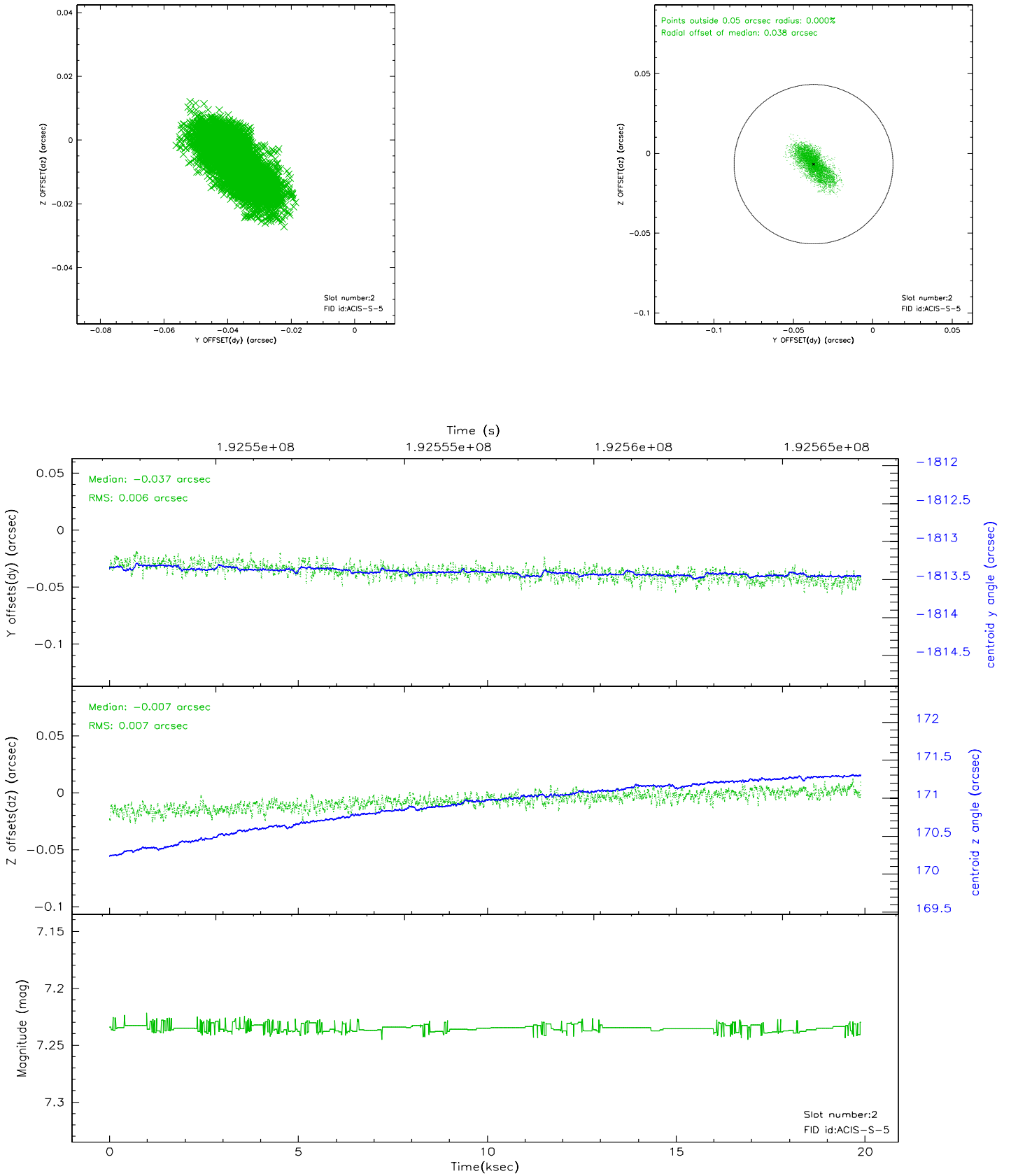
### 2.5.1 Slot 0



2.5.2 Slot 1

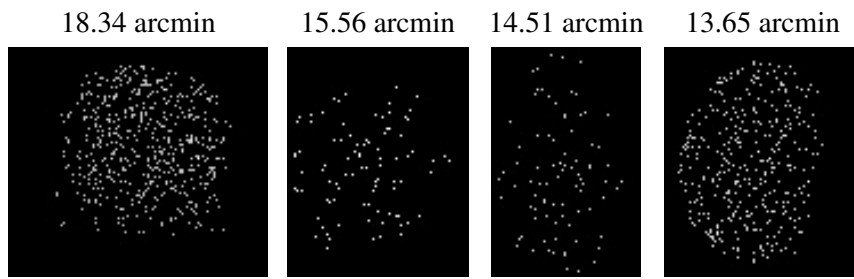


### 2.5.3 Slot 2





### 3 Point Sources



## A Summary

### A.1 Status

V&V Scientist	Beth Sundheim
V&V Date (YYYY-MM-DD)	2006.06.05
V&V Edition	1
V&V Disposition and Status	OK
V&V Charge Time	19.898

### A.2 Comments