

V&V Reference Report

L2 ASCDS Version : 7.6.8

Observation 4244 - L2 Version 001
Chandra X-Ray Center

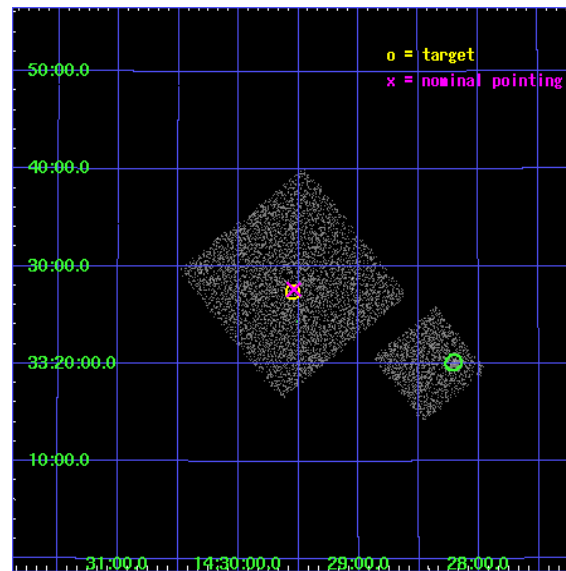
L2 Processing Date : Jul 30 2006

Contents

1	Front	2
2	OBI	3
2.1	OBI	3
2.1.1	Images	3
2.1.2	Bias	3
2.1.3	Parameters	4
2.1.4	Events	4
2.2	Compared Parameters	5
2.3	Aspect	6
2.4	Star Slots	9
2.4.1	Slot 3	9
2.4.2	Slot 4	10
2.4.3	Slot 5	11
2.4.4	Slot 6	12
2.4.5	Slot 7	13
2.5	FID Slots	14
2.5.1	Slot 0	14
2.5.2	Slot 1	15
2.5.3	Slot 2	16
3	Point Sources	17
A	Summary	18
A.1	Status	18
A.2	Comments	18

1 Front

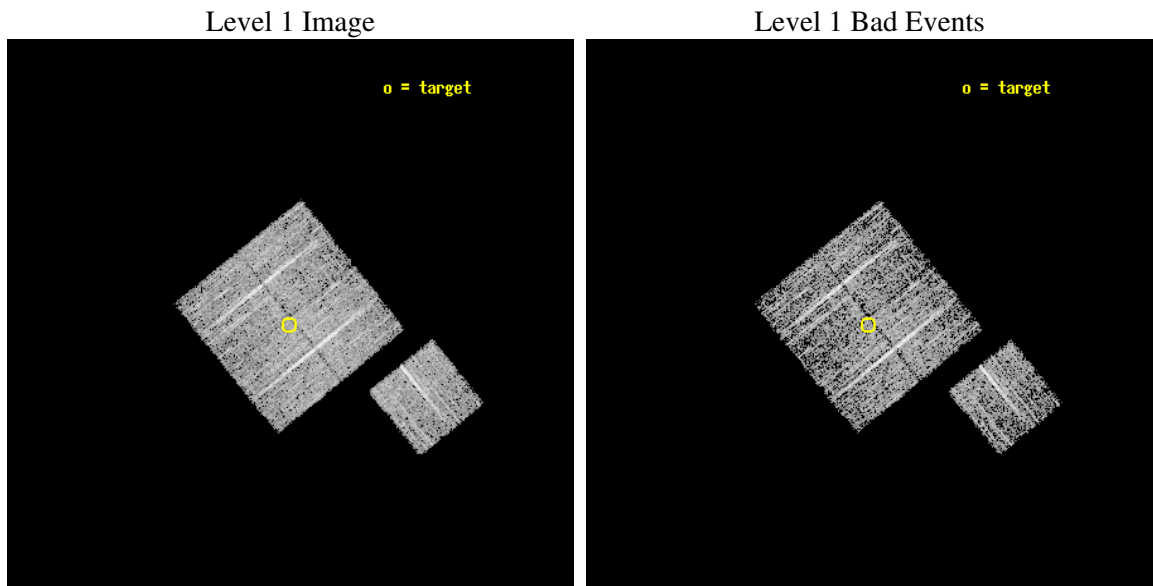
seq_num	900287
obs_id	4244
title	A CHANDRA WIDE-FIELD SURVEY TO MAP THE COSMIC WEB AND INVESTIGATE THE EVOLUTION OF NUCLEAR ACCRETION
observer	Dr. Christine Jones
object	SD17
dtcycle	0
cycle	P
ra_targ	217.38708
dec_targ	33.456918
ra_nom	217.38445672939
dec_nom	33.460989138418
roll_nom	141.01013999677
revision	2
ontime	4578.6999911964
livetime	4518.8759050215
ontime0	4578.6999911964
ontime1	4578.6999911964
ontime2	4578.6999911964
ontime3	4578.6999911964
ontime6	4578.6999911964
l2events	9132



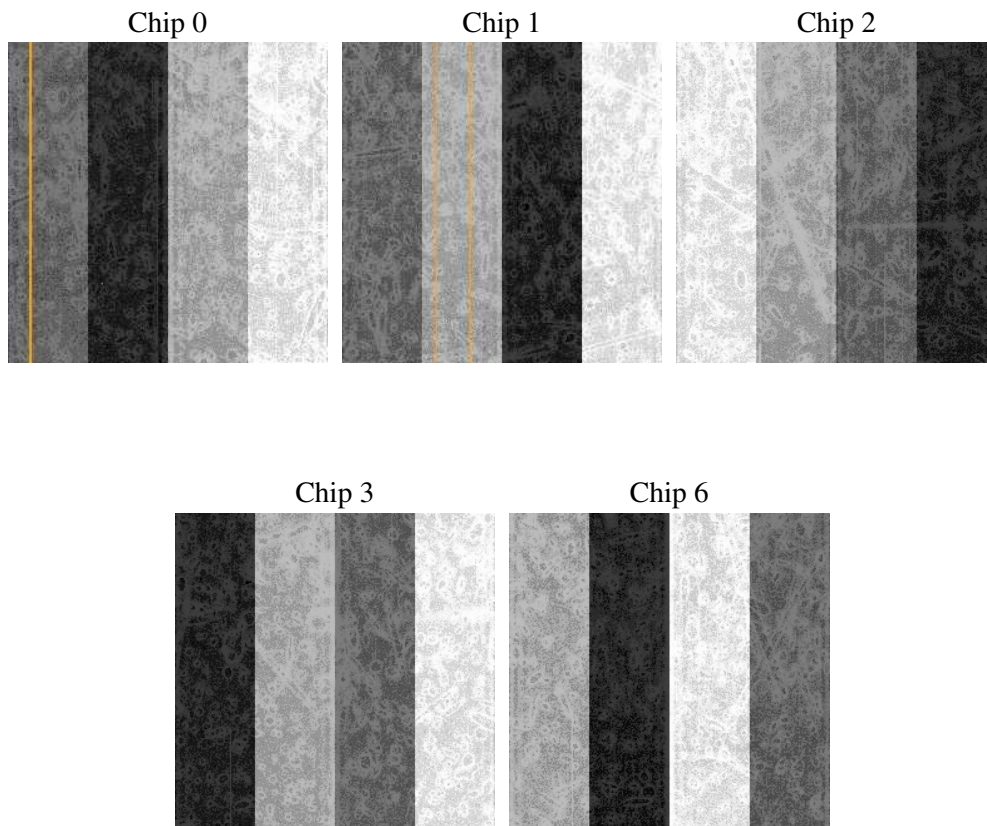
2 OBI

2.1 OBI

2.1.1 Images



2.1.2 Bias



2.1.3 Parameters

obi_num	1
ascdsver	7.6.8
caldbver	3.2.2
date	2006-07-30T07:46:21
revision	2

sched_exp_time	4800.000000
ontime	4582.7260534167
ontime0	4582.7260534465
ontime1	4582.7260733247
ontime2	4582.7260733247
ontime3	4582.7260534167
ontime6	4582.7260733247
l1events	116436

2.1.4 Events

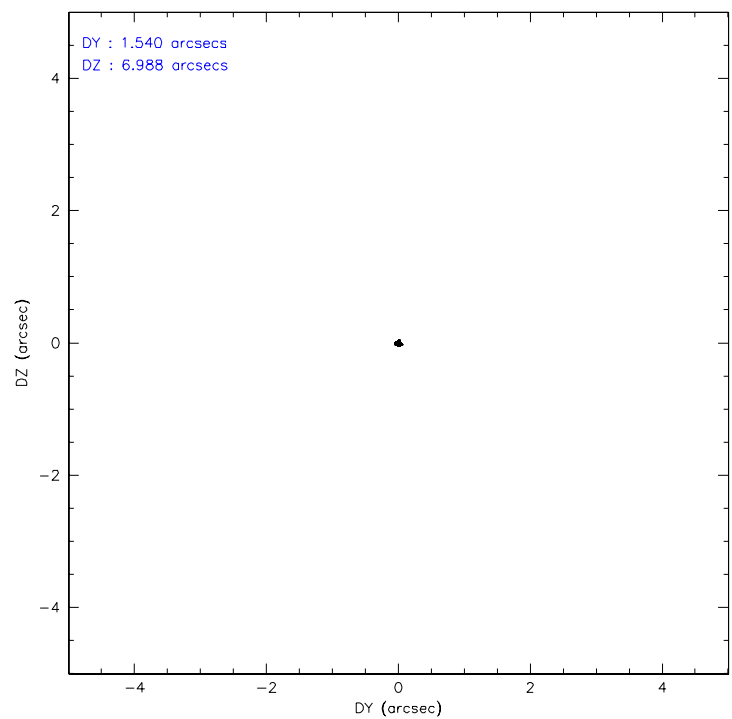
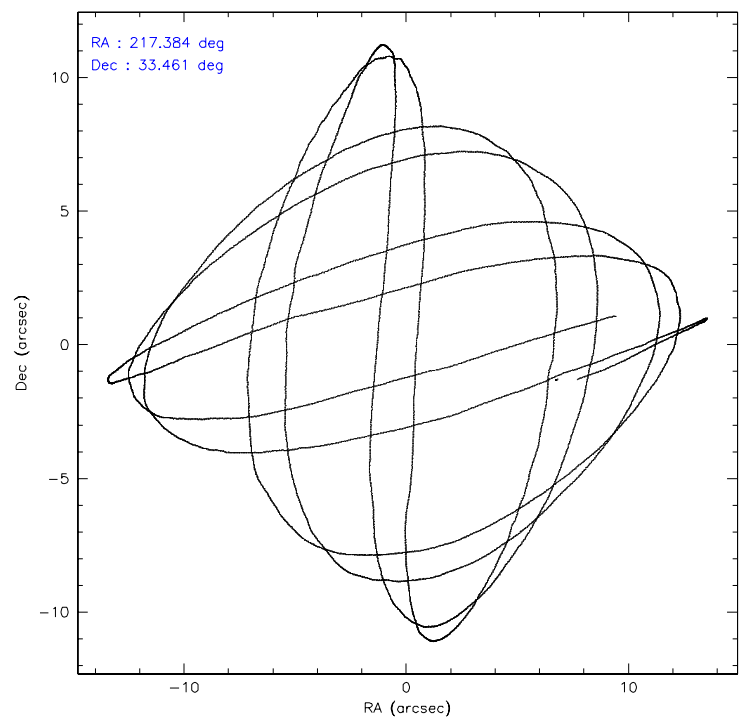
	ccd 0	ccd 1	ccd 2	ccd 3	ccd 6
level 1 events	22589	22559	24851	23785	22652
rejected events	20376	20211	22568	21687	20383
rejected %	90%	89%	90%	91%	89%

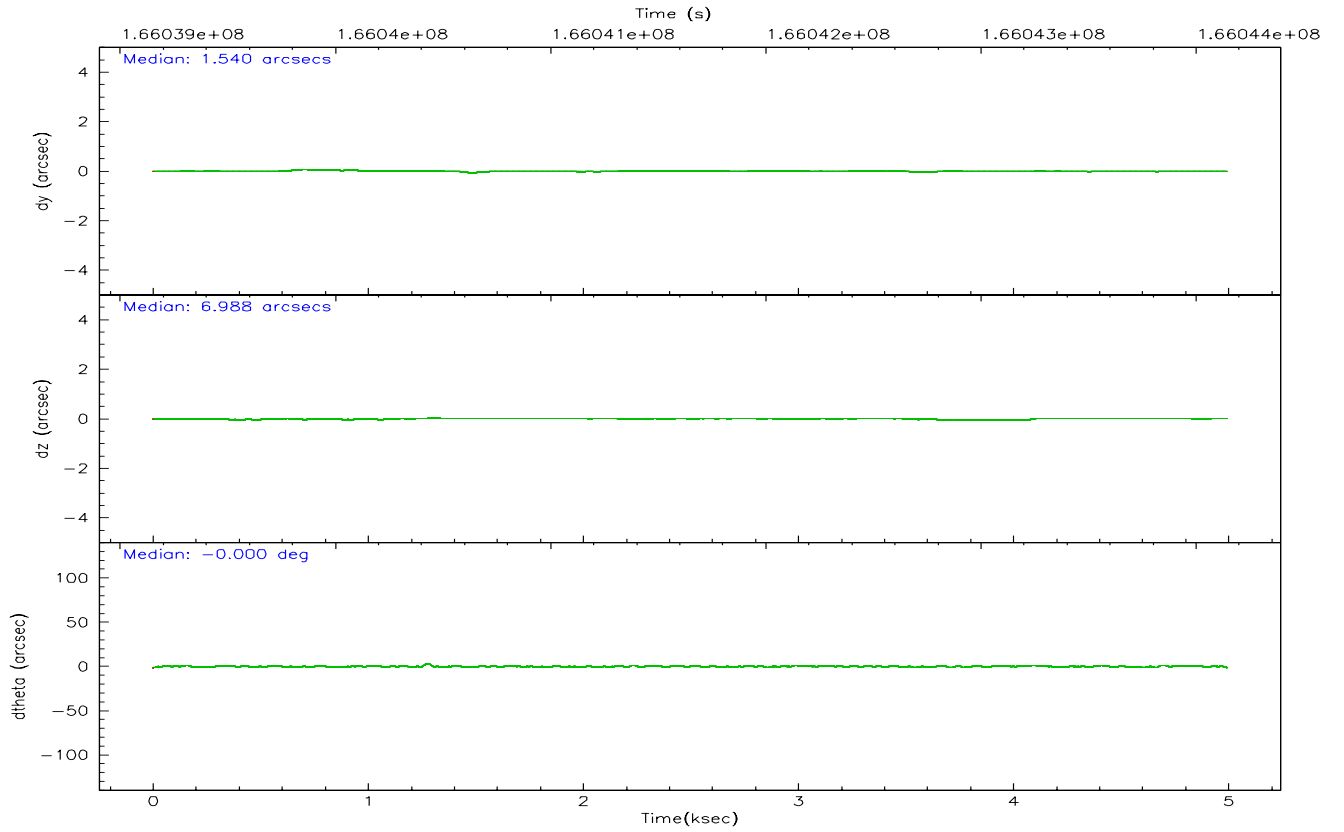
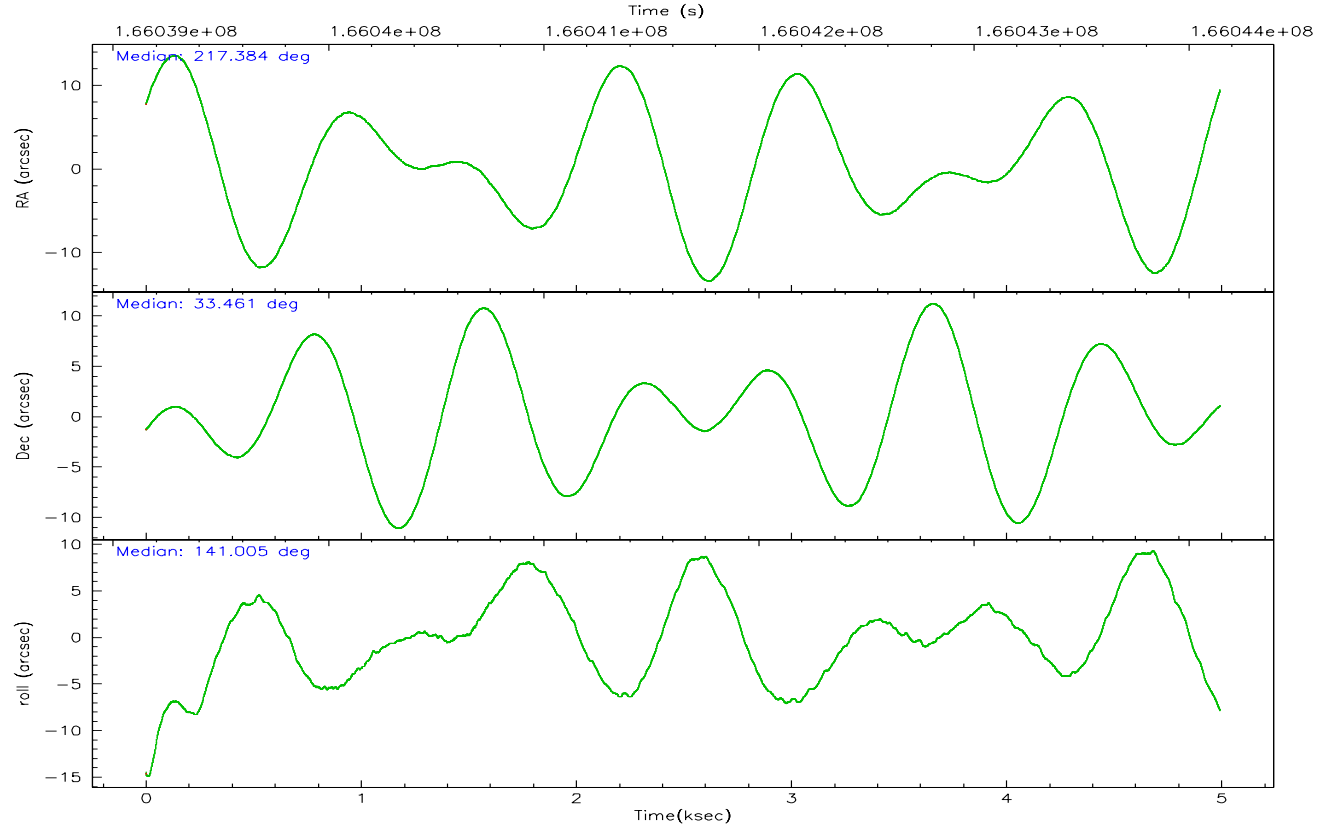
	ccd 0	ccd 1	ccd 2	ccd 3	ccd 6
grade 0 events	722	822	880	759	832
	3%	3%	3%	3%	3%
grade 1 events	12	11	8	17	5
	0%	0%	0%	0%	0%
grade 2 events	572	493	533	450	478
	2%	2%	2%	1%	2%
grade 3 events	268	286	251	271	261
	1%	1%	1%	1%	1%
grade 4 events	254	274	245	264	280
	1%	1%	0%	1%	1%
grade 5 events	664	739	634	765	719
	2%	3%	2%	3%	3%
grade 6 events	401	474	375	355	420
	1%	2%	1%	1%	1%
grade 7 events	19696	19460	21925	20904	19657
	87%	86%	88%	87%	86%

2.2 Compared Parameters

Parameter	Planned	Actual	Parameter	Planned	Actual
Instrument	ACIS	ACIS	Obspar format version number	6	6
Detector	ACIS-01236	ACIS-01236	Obspar file type	PREDICTED	ACTUAL
Grating	NONE	NONE	Obspar update status	NONE	UPDATED
Data mode	VFAINT	VFAINT	On-chip summing requested	N	N
Observation mode	POINTING	POINTING	Subarray requested	NONE	NONE
Pointing RA	217.416910	217.3844567293915	Alternating exposures requested	N	N
Pointing Dec	33.456844	33.46098913841816	Primary exposure time	0.000000	3.1
Pointing Roll	140.783560	141.0101399967696			
SIM focus pos (mm)	-0.782348	-0.7809083437167272			
SIM defocus (mm)	0	0.001439871863259334			
SIM translation stage pos (mm)	-233.592463	-233.5874344608287			
SIM translation stage offset (mm)	0	-0.005018542100998502			
Observation start time	166039345.184000	166038969.4648			
Observation start date	2003-04-06T18:01:21	2003-04-06T17:56:09			
Observation end time	166044145.184000	166044279.47752			
Observation end date	2003-04-06T19:21:21	2003-04-06T19:24:39			
Read mode	TIMED	TIMED			

2.3 Aspect



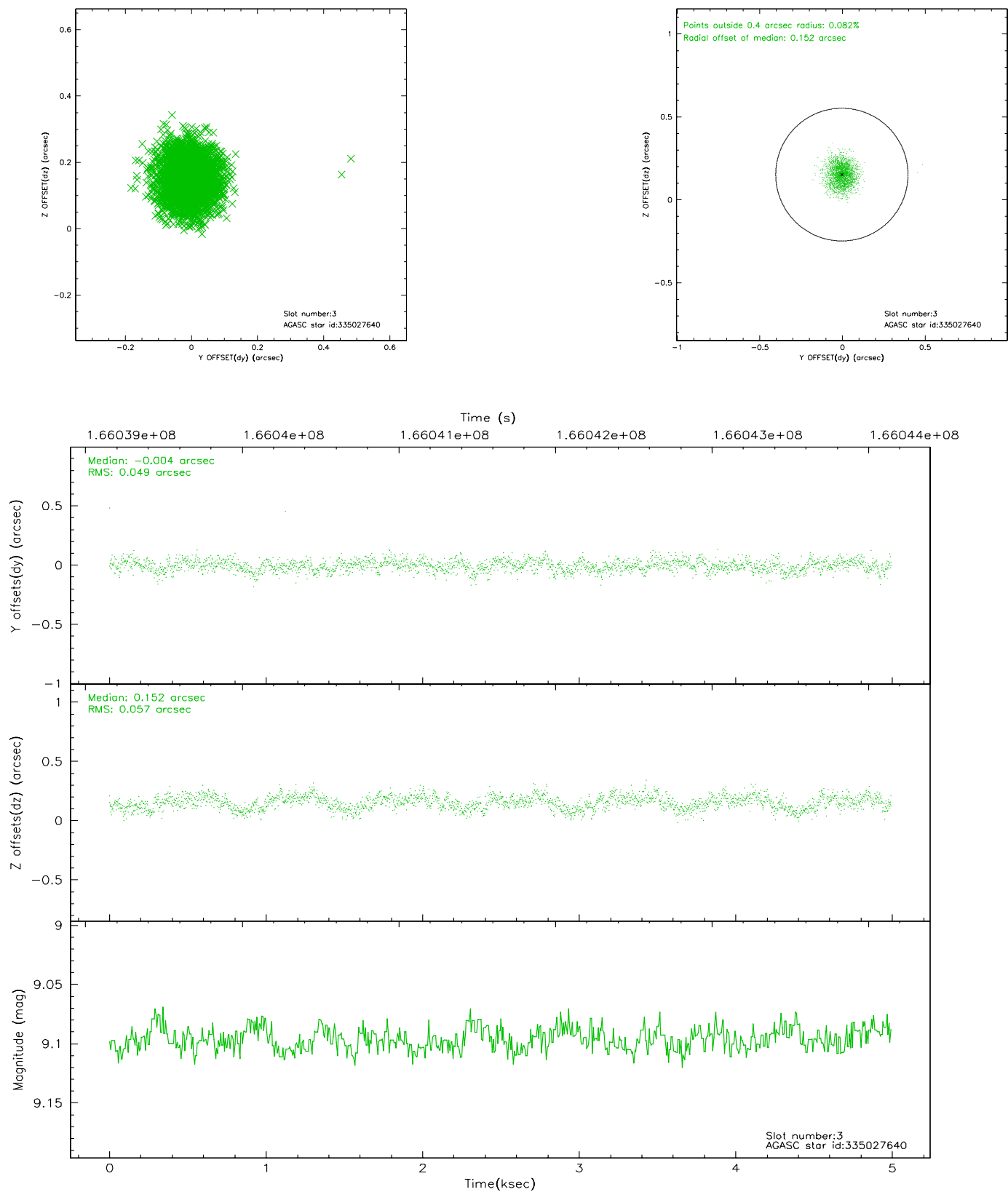


Slot Statistics

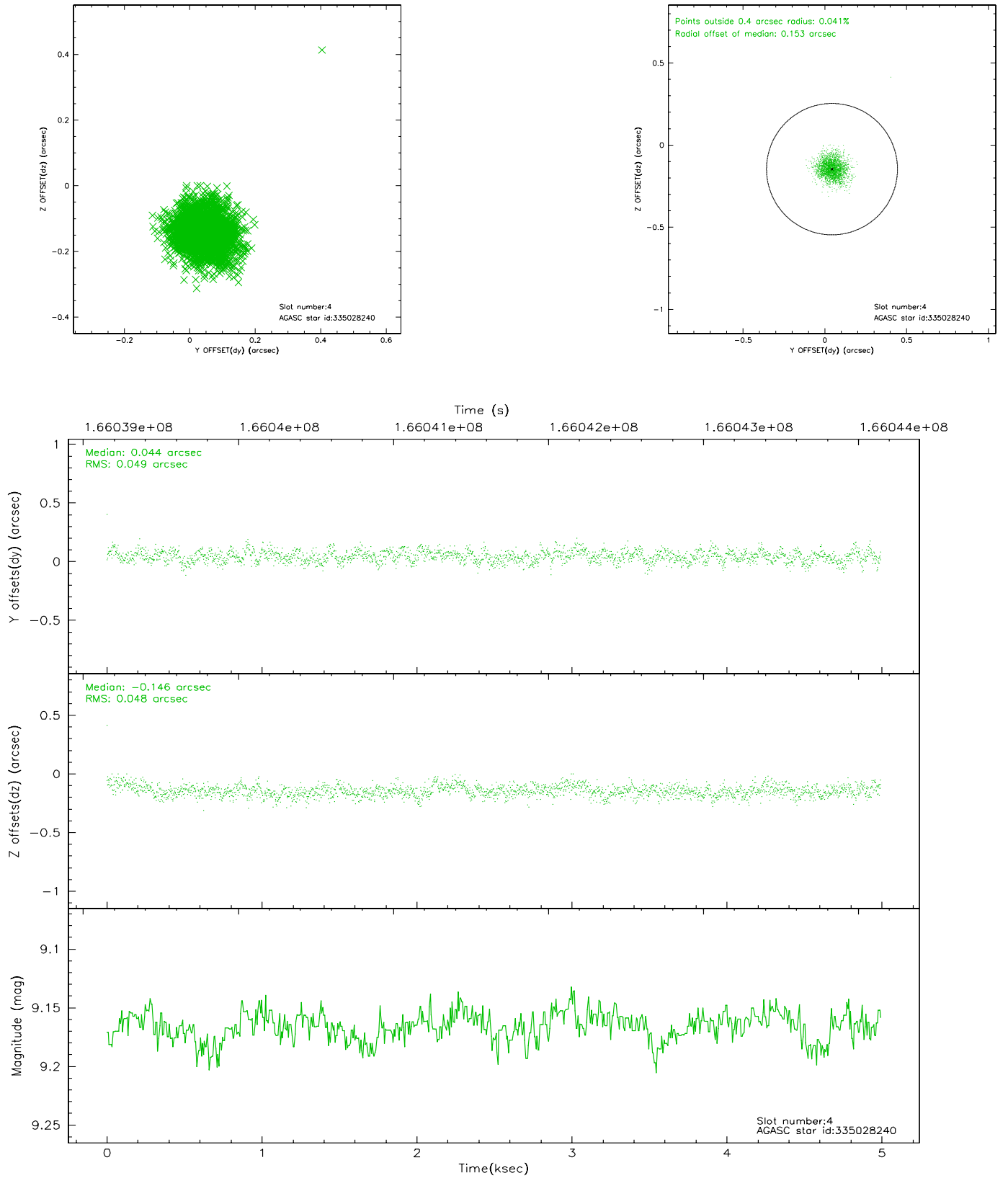
slot	status	id	mag	n_pts	med_dy	med_dz	dr1	dr2	ra	dec	mean_y	mean_z
0	FID	ACIS-I-1	7.25	1219	-0.011	0.038	0.006	0.011	0.000000	0.000000	938.26	-830.36
1	FID	ACIS-I-5	7.24	1219	-0.047	0.046	0.006	0.010	0.000000	0.000000	-1809.15	1066.60
2	FID	ACIS-I-6	7.26	1219	-0.034	-0.013	0.007	0.010	0.000000	0.000000	402.53	1712.37
3	GUIDE	335027640	9.10	2436	-0.004	0.152	0.079	0.127	218.092211	33.193770	-2170.61	-557.51
4	GUIDE	335028240	9.17	2437	0.044	-0.146	0.072	0.117	216.746851	33.385009	1400.51	1468.72
5	GUIDE	335028696	9.16	2437	0.106	0.165	0.069	0.113	217.260519	33.844112	1244.86	-783.78
6	GUIDE	335029384	8.49	2437	-0.031	-0.084	0.053	0.085	217.848061	33.088477	-1843.81	202.76
7	GUIDE	335029808	9.07	2436	-0.114	-0.086	0.081	0.127	216.789548	33.180488	838.27	1961.71

2.4 Star Slots

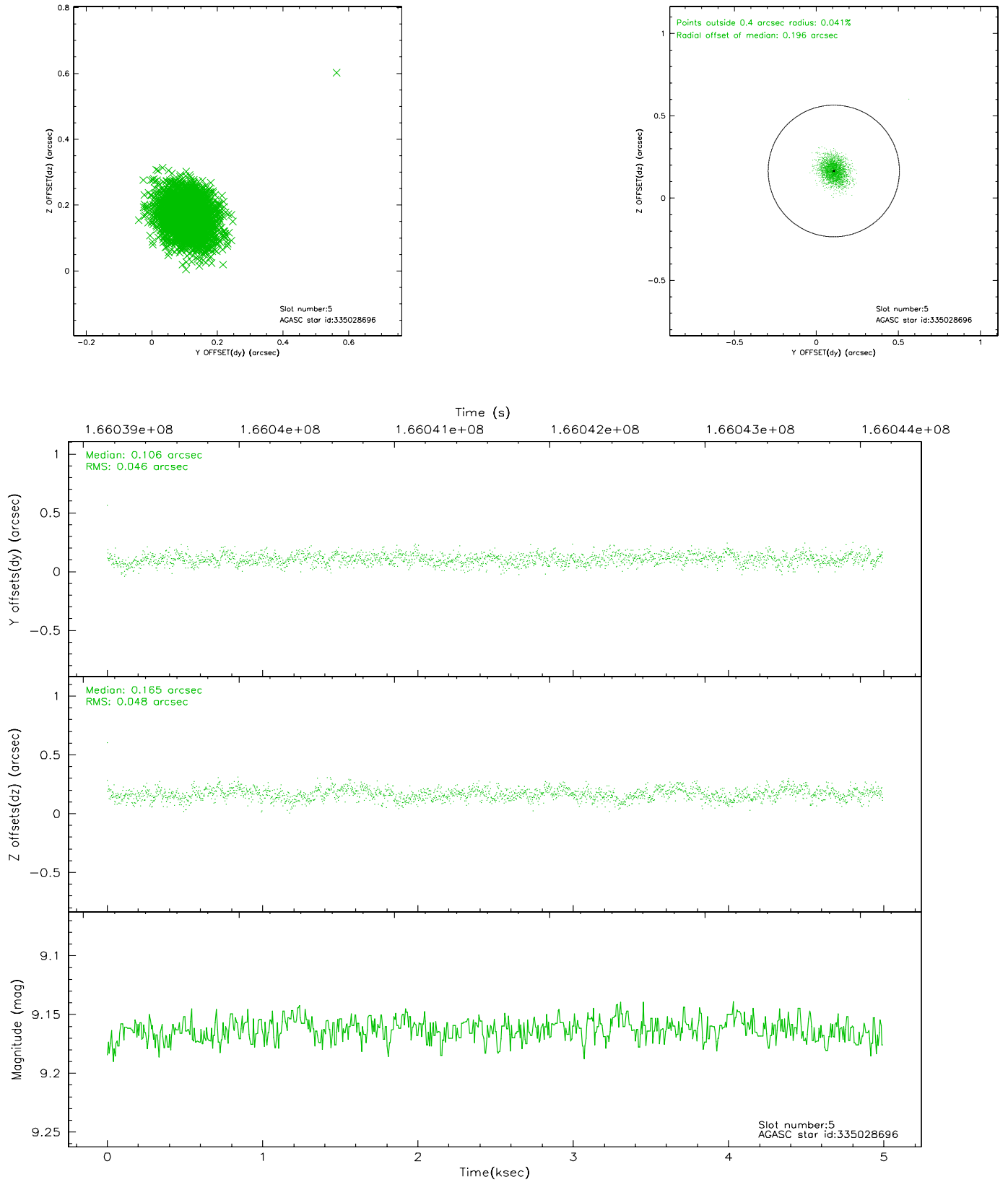
2.4.1 Slot 3



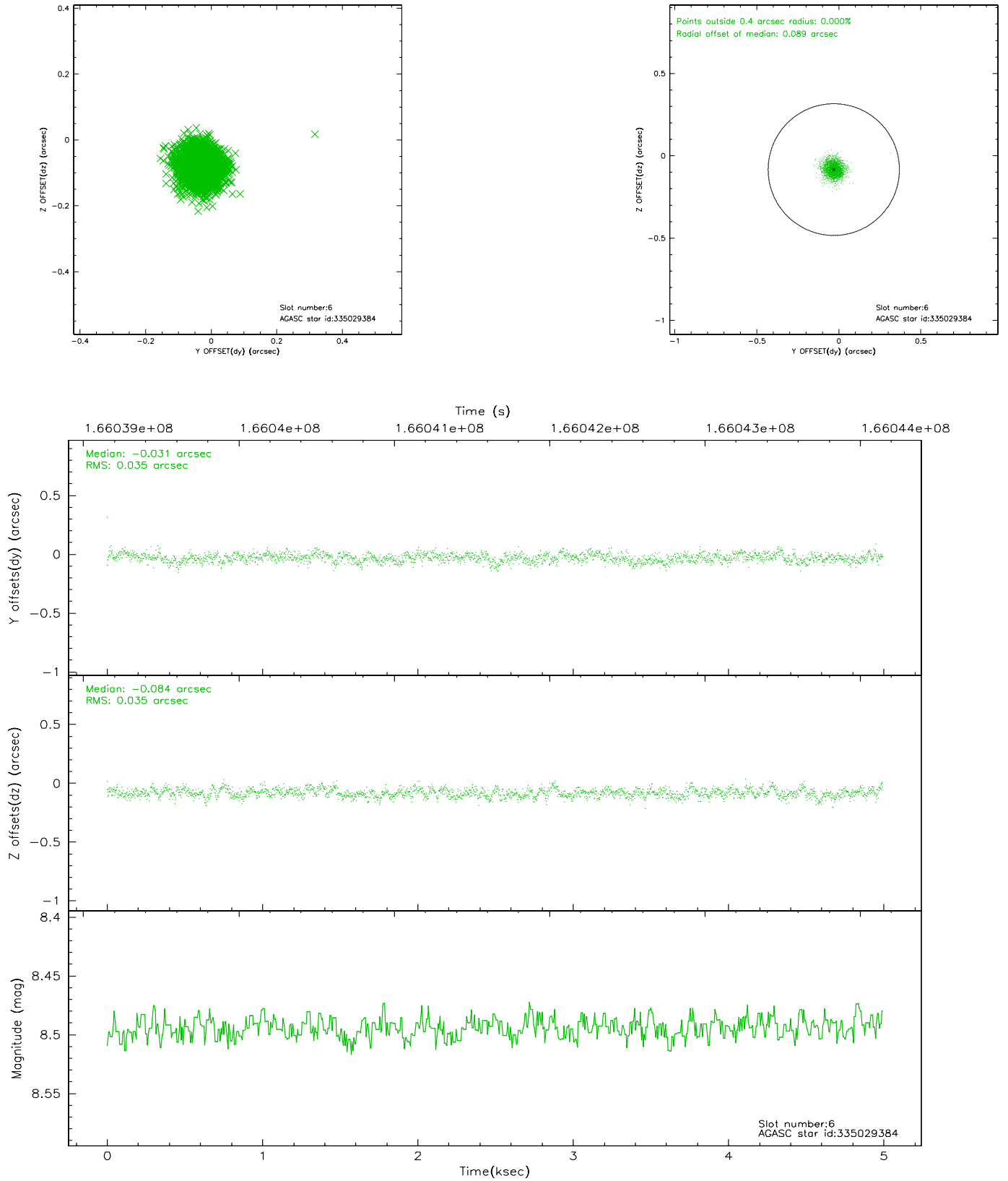
2.4.2 Slot 4



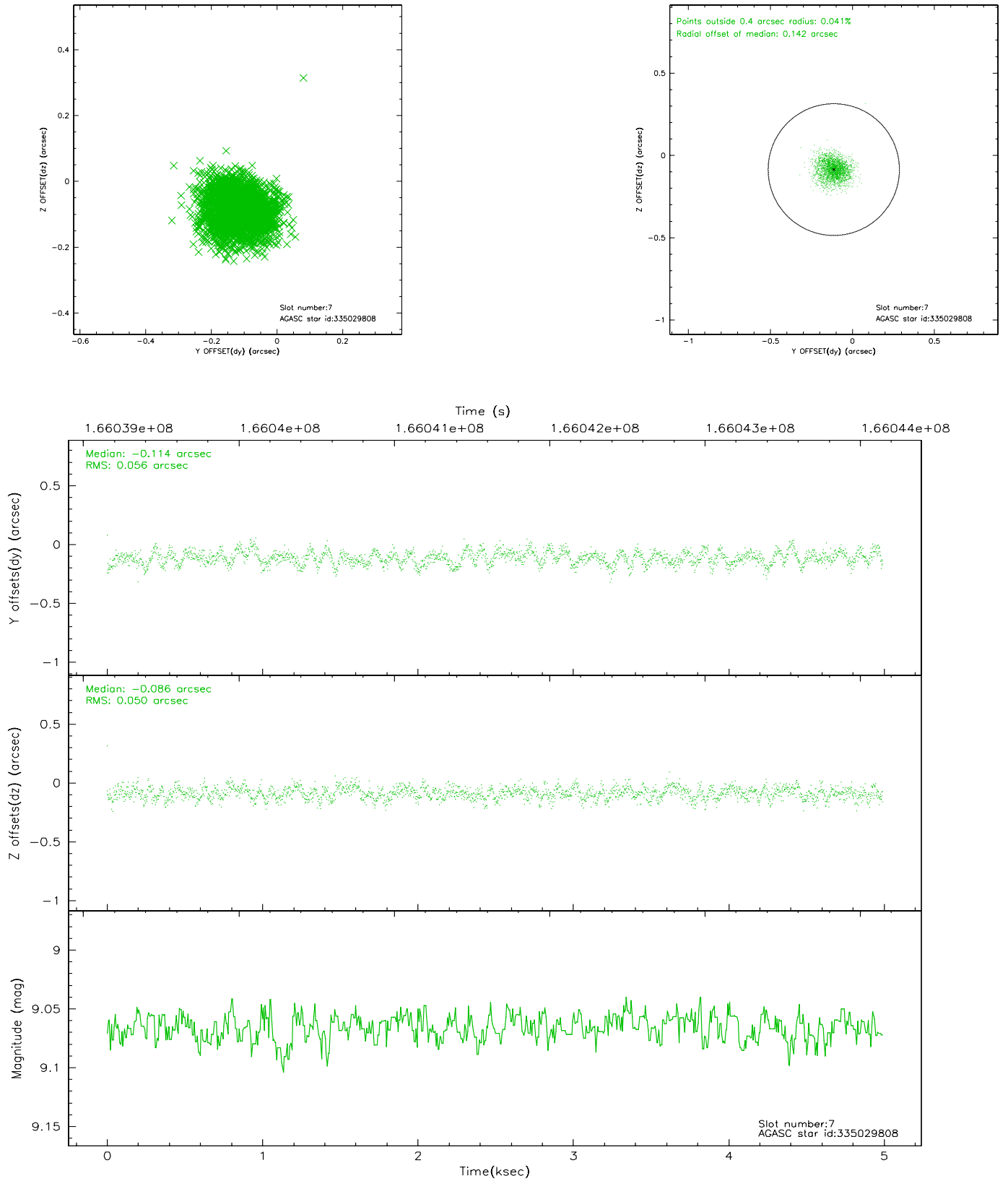
2.4.3 Slot 5



2.4.4 Slot 6

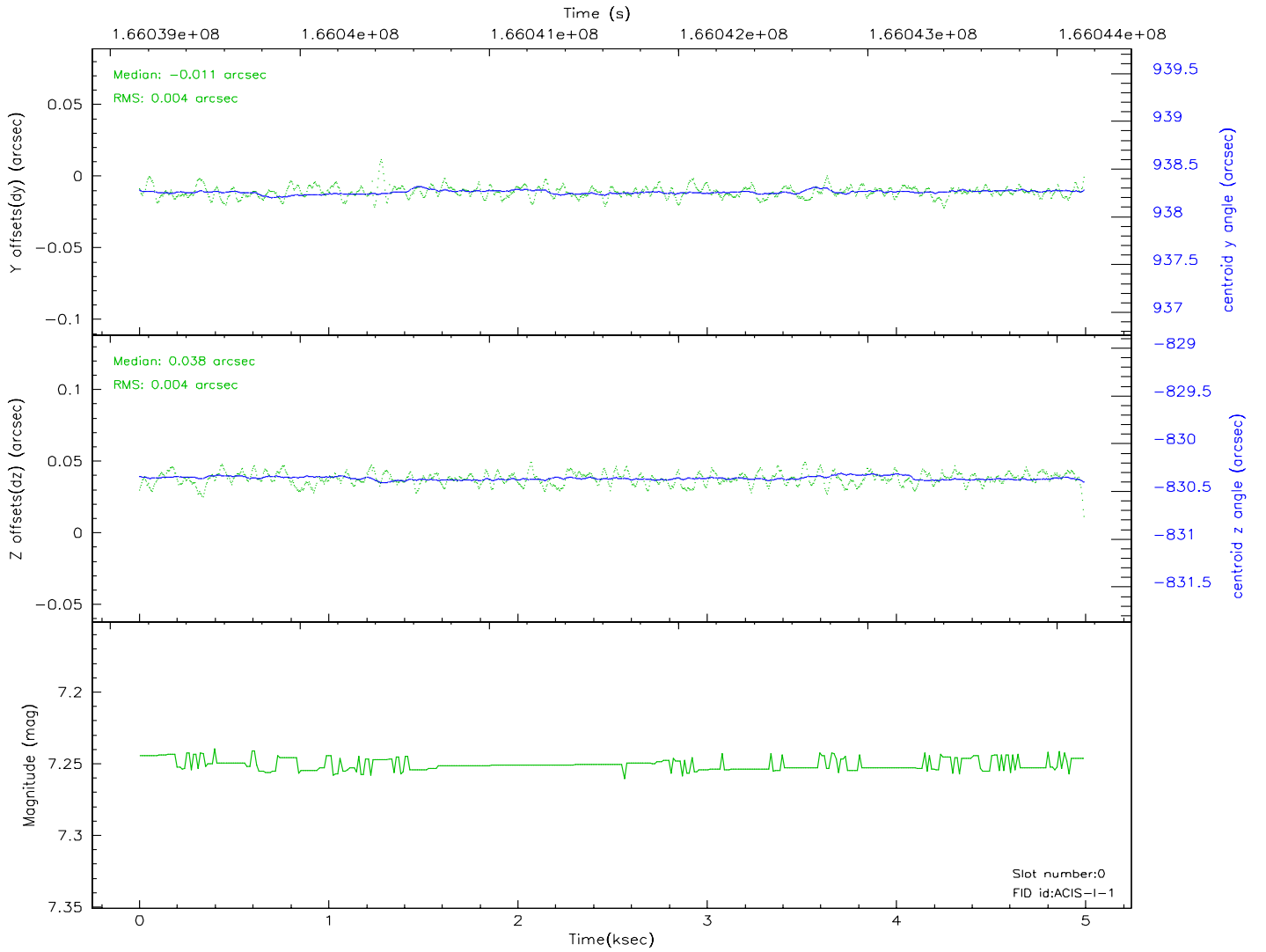
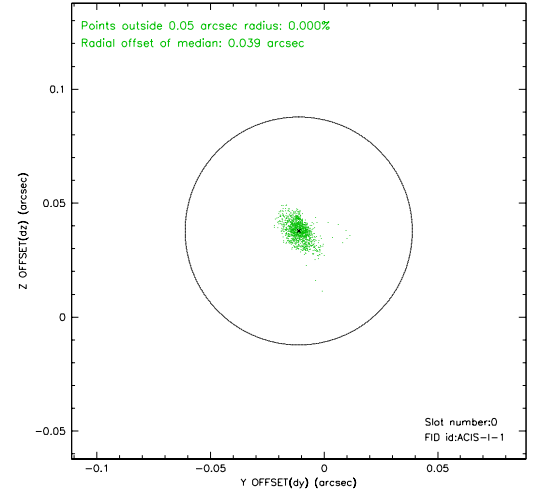
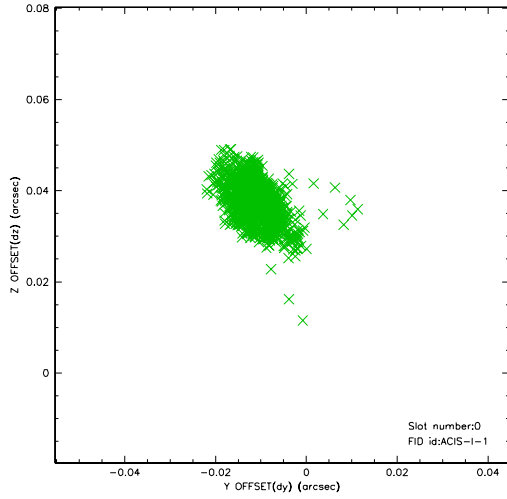


2.4.5 Slot 7

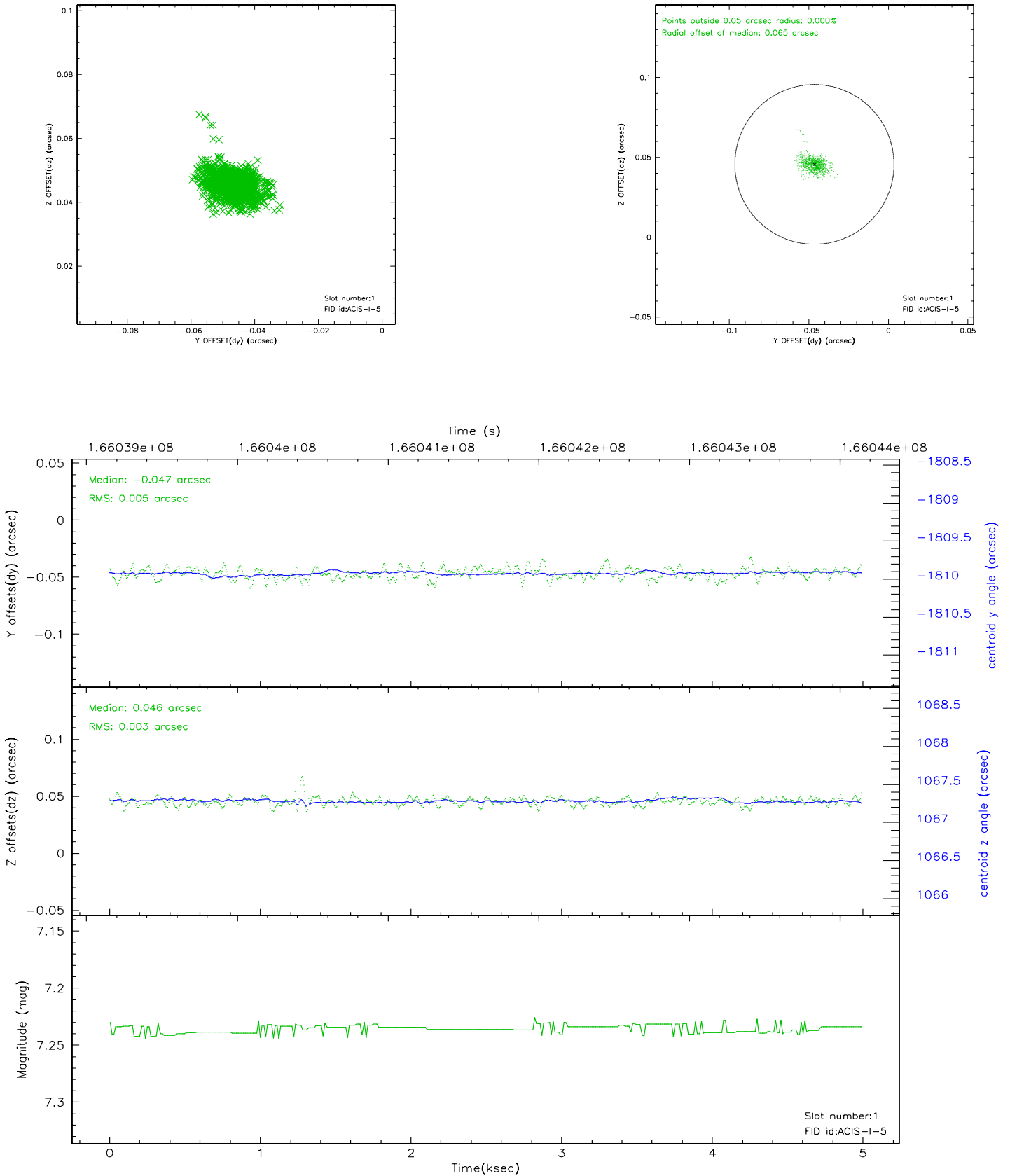


2.5 FID Slots

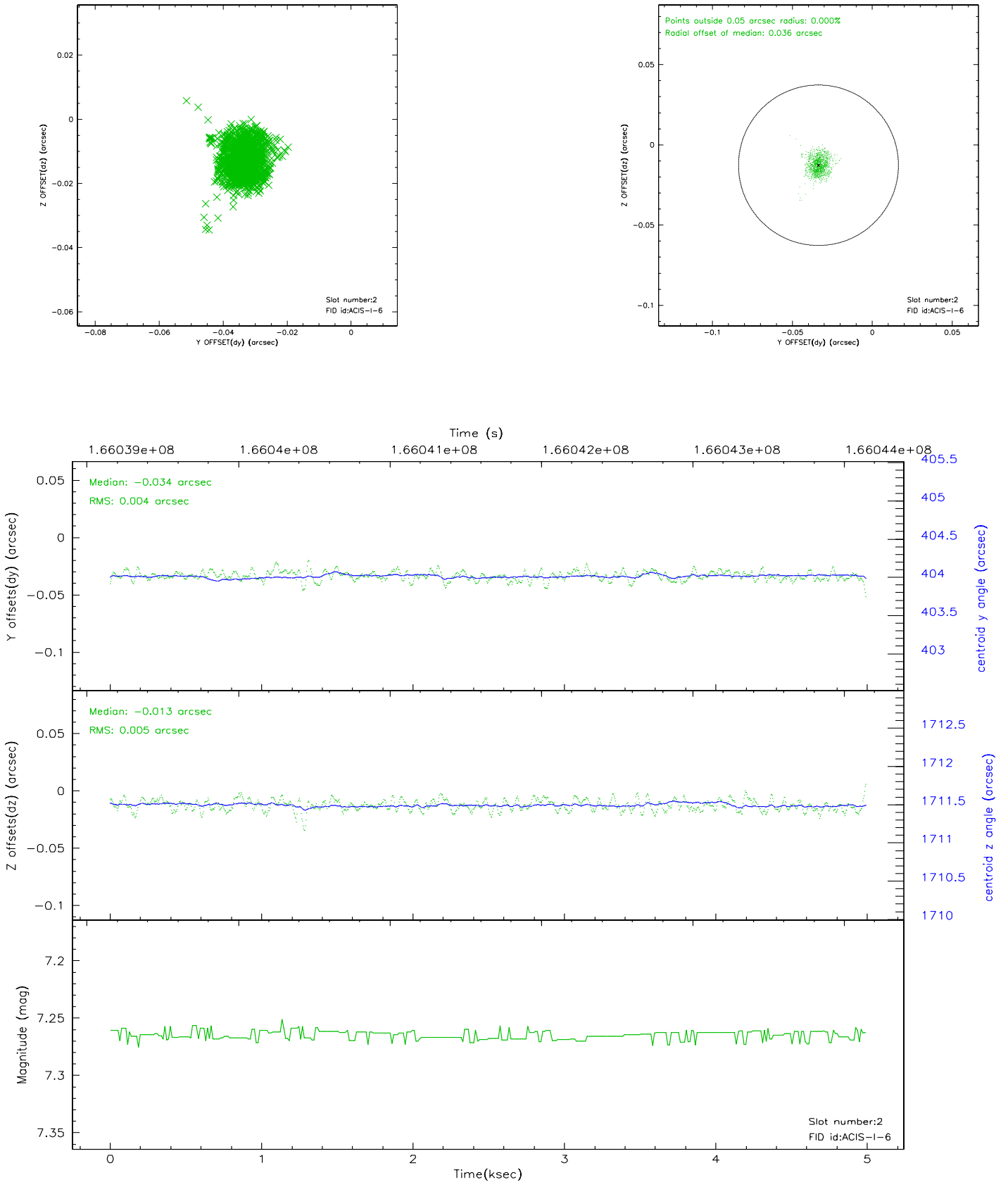
2.5.1 Slot 0



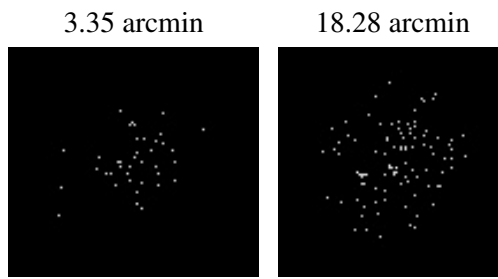
2.5.2 Slot 1



2.5.3 Slot 2



3 Point Sources



A Summary

A.1 Status

V&V Scientist	Jen Lauer
V&V Date (YYYY-MM-DD)	2006.07.30
V&V Edition	1
V&V Disposition and Status	OK
V&V Charge Time	4.578

A.2 Comments