

# V&V Reference Report

## L2 ASCDS Version : 7.6.8

Observation 4224 - L2 Version 001  
Chandra X-Ray Center

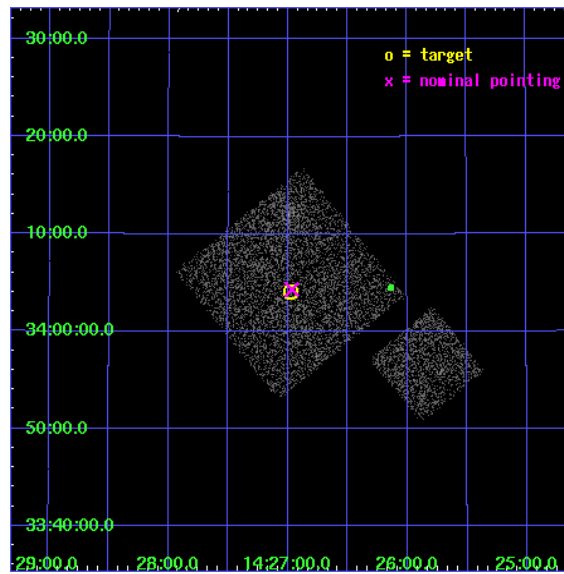
L2 Processing Date : Jul 29 2006

## Contents

<b>1</b>	<b>Front</b>	<b>2</b>
<b>2</b>	<b>OBI</b>	<b>3</b>
2.1	OBI . . . . .	3
2.1.1	Images . . . . .	3
2.1.2	Bias . . . . .	3
2.1.3	Parameters . . . . .	4
2.1.4	Events . . . . .	4
2.2	Compared Parameters . . . . .	5
2.3	Aspect . . . . .	6
2.4	Star Slots . . . . .	9
2.4.1	Slot 3 . . . . .	9
2.4.2	Slot 4 . . . . .	10
2.4.3	Slot 5 . . . . .	11
2.4.4	Slot 6 . . . . .	12
2.4.5	Slot 7 . . . . .	13
2.5	FID Slots . . . . .	14
2.5.1	Slot 0 . . . . .	14
2.5.2	Slot 1 . . . . .	15
2.5.3	Slot 2 . . . . .	16
<b>3</b>	<b>Point Sources</b>	<b>17</b>
<b>A</b>	<b>Summary</b>	<b>18</b>
A.1	Status . . . . .	18
A.2	Comments . . . . .	18

# 1 Front

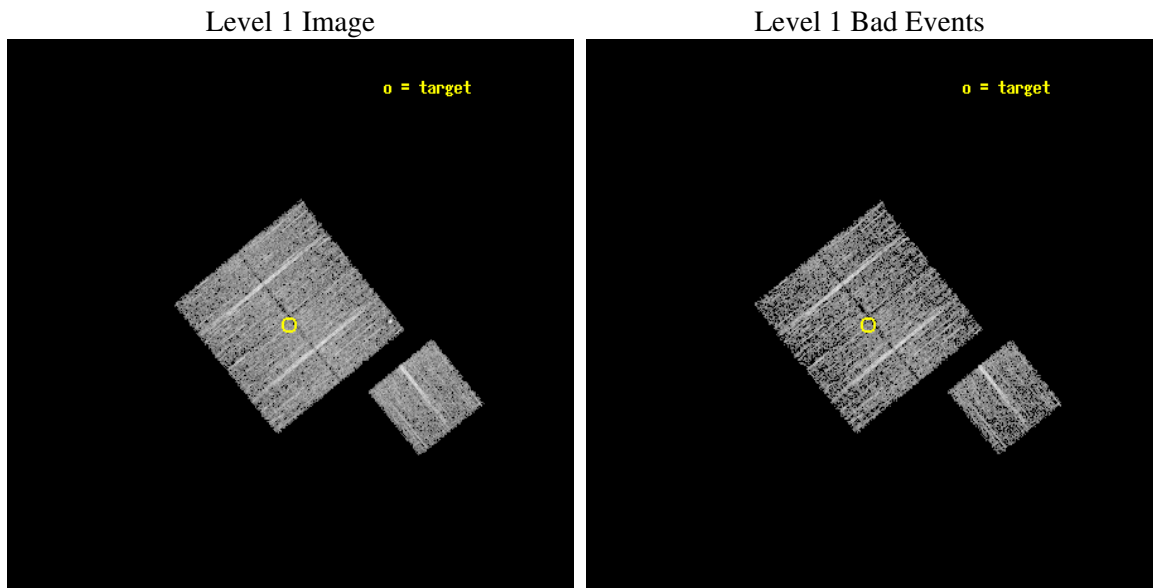
seq_num	900267
obs_id	4224
title	A CHANDRA WIDE-FIELD SURVEY TO MAP THE COSMIC WEB AND INVESTIGATE THE EVOLUTION OF NUCLEAR ACCRETION
observer	Dr. Christine Jones
object	SS35
dtcycle	0
cycle	P
ra_targ	216.744263
dec_targ	34.068
ra_nom	216.74163766898
dec_nom	34.07213152978
roll_nom	141.01016230801
revision	2
ontime	4777.0999908149
livetime	4714.6836625851
ontime0	4777.0999908149
ontime1	4777.0999908149
ontime2	4777.0999908149
ontime3	4777.0999908149
ontime6	4773.959010601
l2events	10021



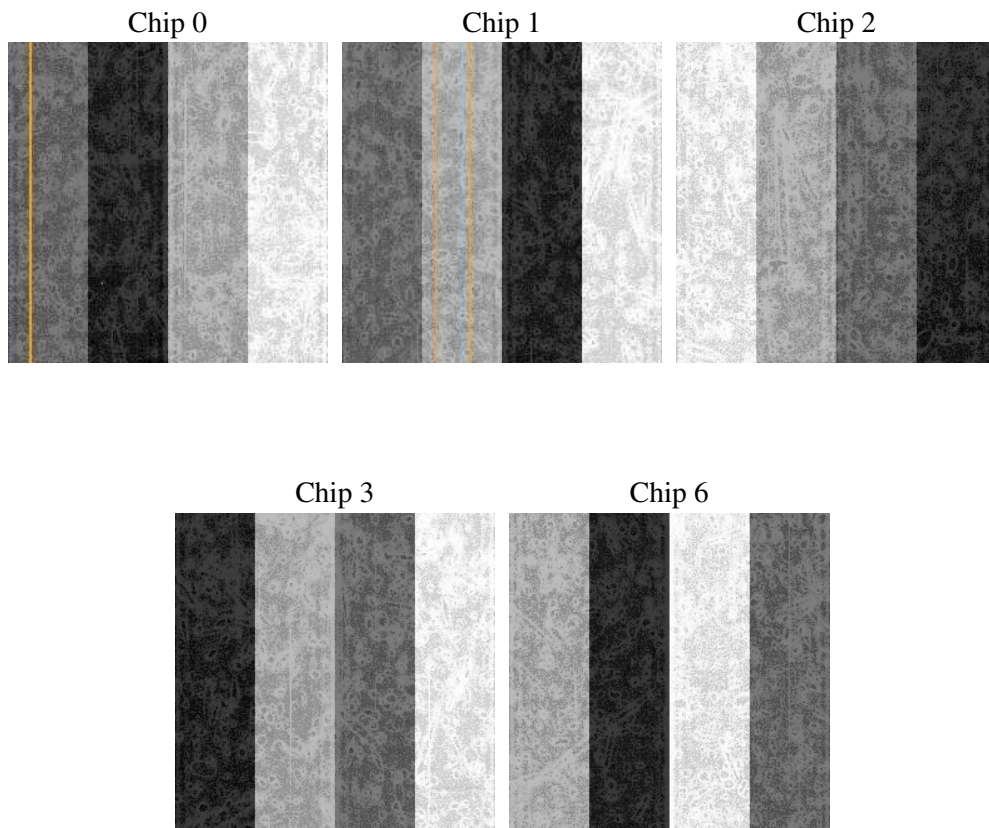
## 2 OBI

### 2.1 OBI

#### 2.1.1 Images



#### 2.1.2 Bias



### 2.1.3 Parameters

obi_num	0
ascdsver	7.6.8
caldsver	3.2.2
date	2006-07-29T16:48:32
revision	2

sched_exp_time	5000.000000
ontime	4780.6214814484
ontime0	4780.6214814484
ontime1	4780.6214814484
ontime2	4780.6214814484
ontime3	4780.6214814484
ontime6	4777.4805211723
l1events	123055

### 2.1.4 Events

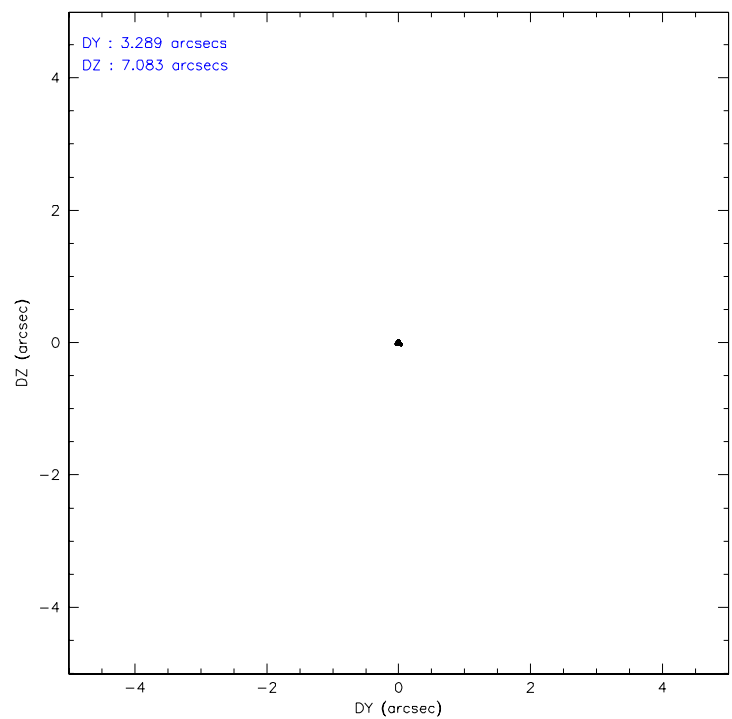
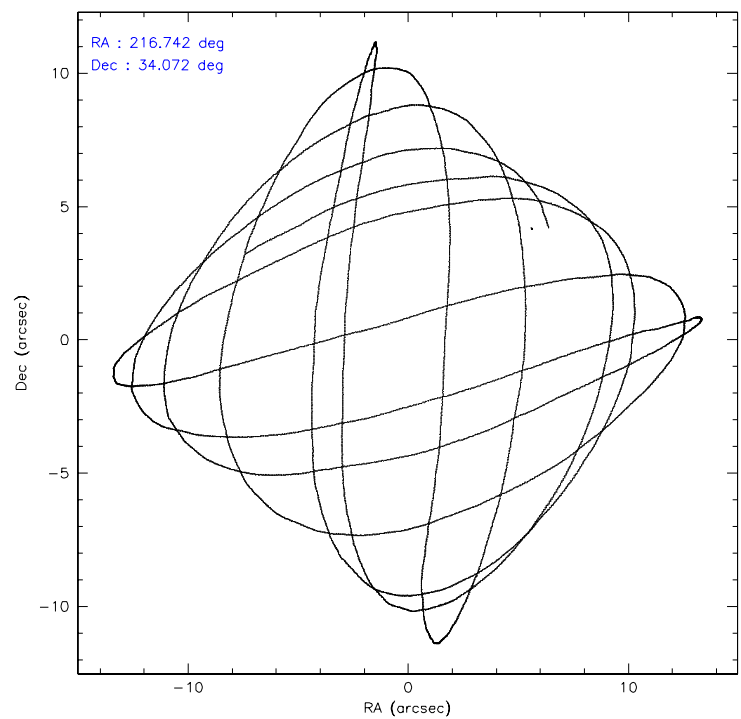
	ccd 0	ccd 1	ccd 2	ccd 3	ccd 6
level 1 events	23641	23486	26596	24832	24500
rejected events	20988	21097	24045	22733	22096
rejected %	88%	89%	90%	91%	90%

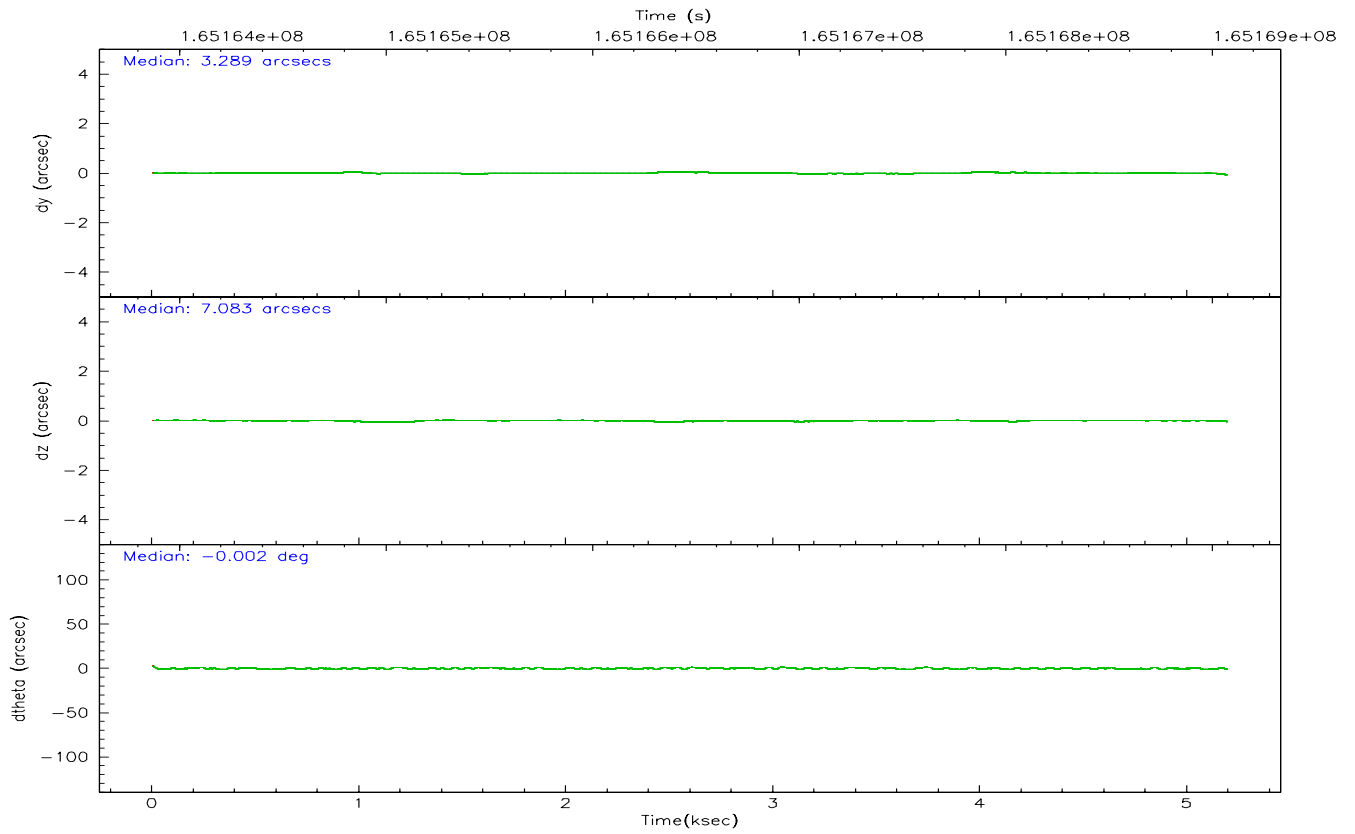
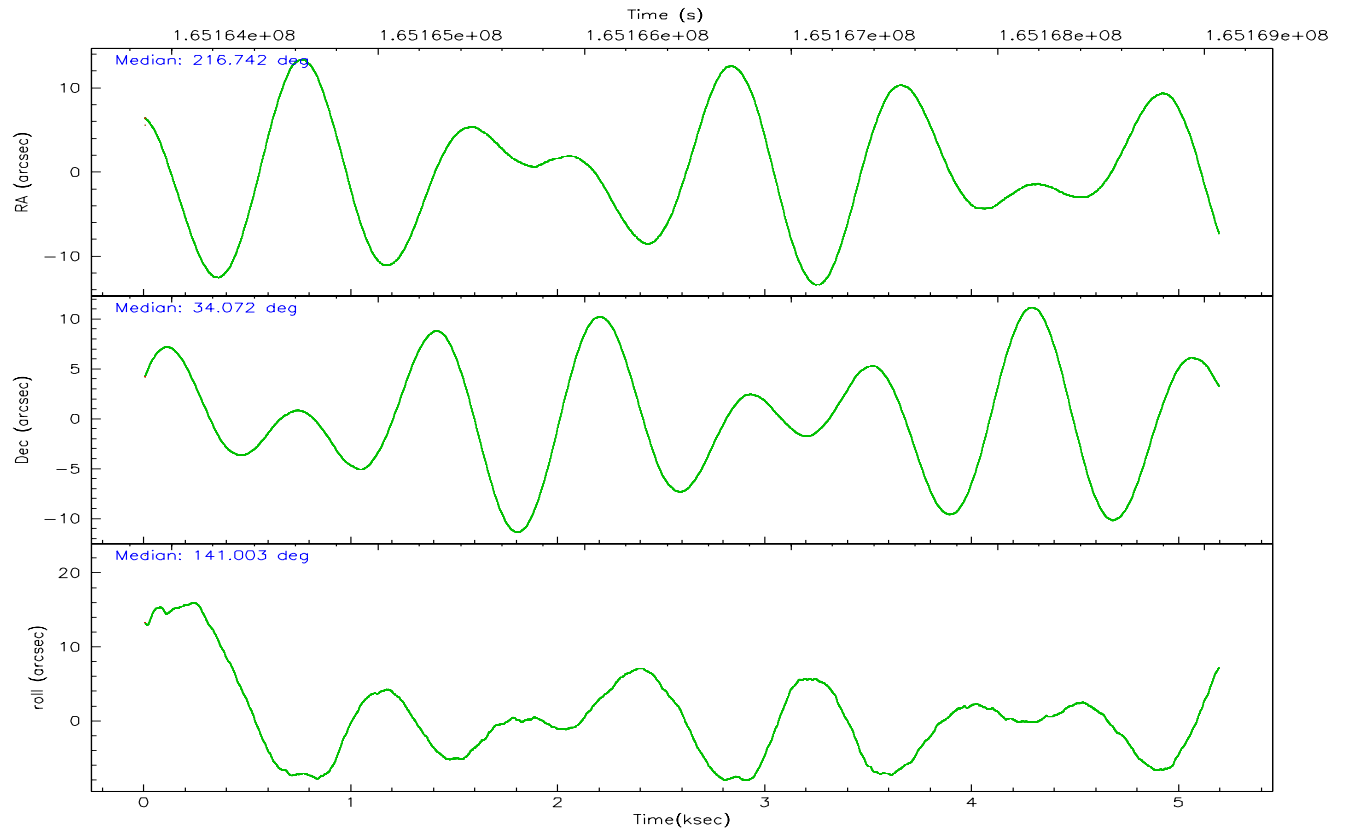
	ccd 0	ccd 1	ccd 2	ccd 3	ccd 6
grade 0 events	1130	839	1073	760	860
	4%	3%	4%	3%	3%
grade 1 events	13	10	13	13	13
	0%	0%	0%	0%	0%
grade 2 events	548	504	560	453	508
	2%	2%	2%	1%	2%
grade 3 events	269	285	255	271	287
	1%	1%	0%	1%	1%
grade 4 events	247	275	252	256	272
	1%	1%	0%	1%	1%
grade 5 events	701	750	676	797	788
	2%	3%	2%	3%	3%
grade 6 events	460	487	412	359	480
	1%	2%	1%	1%	1%
grade 7 events	20273	20336	23355	21923	21292
	85%	86%	87%	88%	86%

## 2.2 Compared Parameters

Parameter	Planned	Actual	Parameter	Planned	Actual
Instrument	ACIS	ACIS	Obspar format version number	6	6
Detector	ACIS-01236	ACIS-01236	Obspar file type	PREDICTED	ACTUAL
Grating	NONE	NONE	Obspar update status	NONE	UPDATED
Data mode	VFAINT	VFAINT	On-chip summing requested	N	N
Observation mode	POINTING	POINTING	Subarray requested	NONE	NONE
Pointing RA	216.774299	216.7416376689789	Alternating exposures requested	N	N
Pointing Dec	34.067926	34.07213152977951	Primary exposure time	0.000000	3.1
Pointing Roll	140.783174	141.010162308014			
SIM focus pos (mm)	-0.782348	-0.7809083437167272			
SIM defocus (mm)	0	0.001439871863259334			
SIM translation stage pos (mm)	-233.592463	-233.5874344608287			
SIM translation stage offset (mm)	0	-0.005018542100998502			
Observation start time	165164069.184000	165163693.74038			
Observation start date	2003-03-27T14:53:25	2003-03-27T14:48:13			
Observation end time	165169069.184000	165169204.14061			
Observation end date	2003-03-27T16:16:45	2003-03-27T16:20:04			
Read mode	TIMED	TIMED			

## 2.3 Aspect



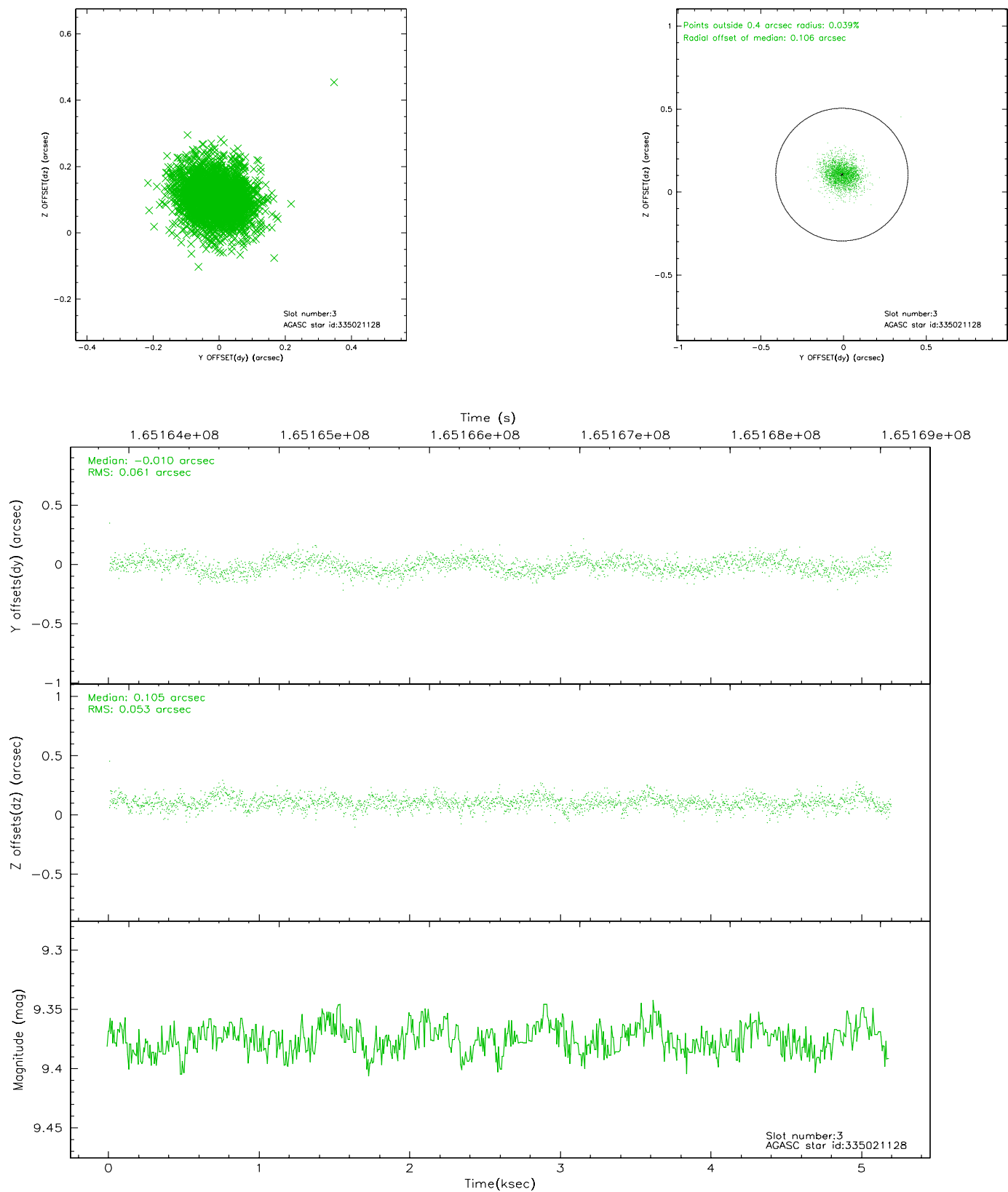


### Slot Statistics

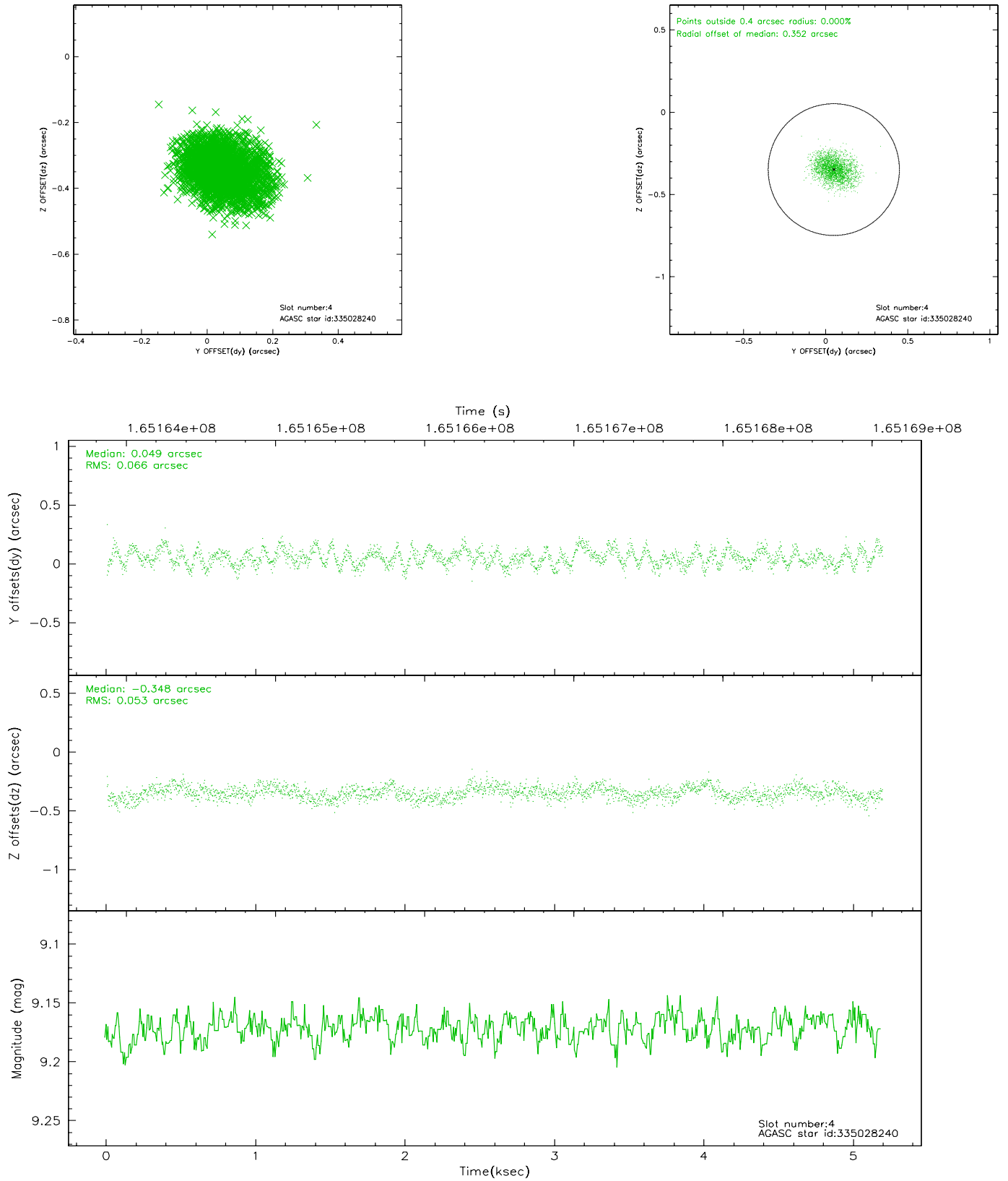
slot	status	id	mag	n_pts	med_dy	med_dz	dr1	dr2	ra	dec	mean_y	mean_z
0	FID	ACIS-I-2	7.17	1267	-0.044	-0.054	0.008	0.014	0.000000	0.000000	-757.72	-836.90
1	FID	ACIS-I-4	7.19	1267	0.034	0.047	0.005	0.009	0.000000	0.000000	2155.88	1068.80
2	FID	ACIS-I-5	7.24	1267	-0.091	0.075	0.008	0.013	0.000000	0.000000	-1810.10	1067.99
3	GUIDE	335021128	9.38	2532	-0.010	0.105	0.085	0.142	216.159551	34.422539	2225.14	161.68
4	GUIDE	335028240	9.17	2533	0.049	-0.348	0.092	0.145	216.746851	33.385009	-1489.43	1956.92
5	GUIDE	335028696	9.22	2531	0.176	0.179	0.067	0.112	217.260519	33.844112	-1633.79	-296.44
6	GUIDE	335030384	8.85	2529	-0.080	0.052	0.096	0.151	216.806407	34.722197	1415.32	-1884.46
7	GUIDE	335028336	9.48	2532	-0.138	0.013	0.095	0.157	217.189840	34.665629	409.67	-2447.23

## 2.4 Star Slots

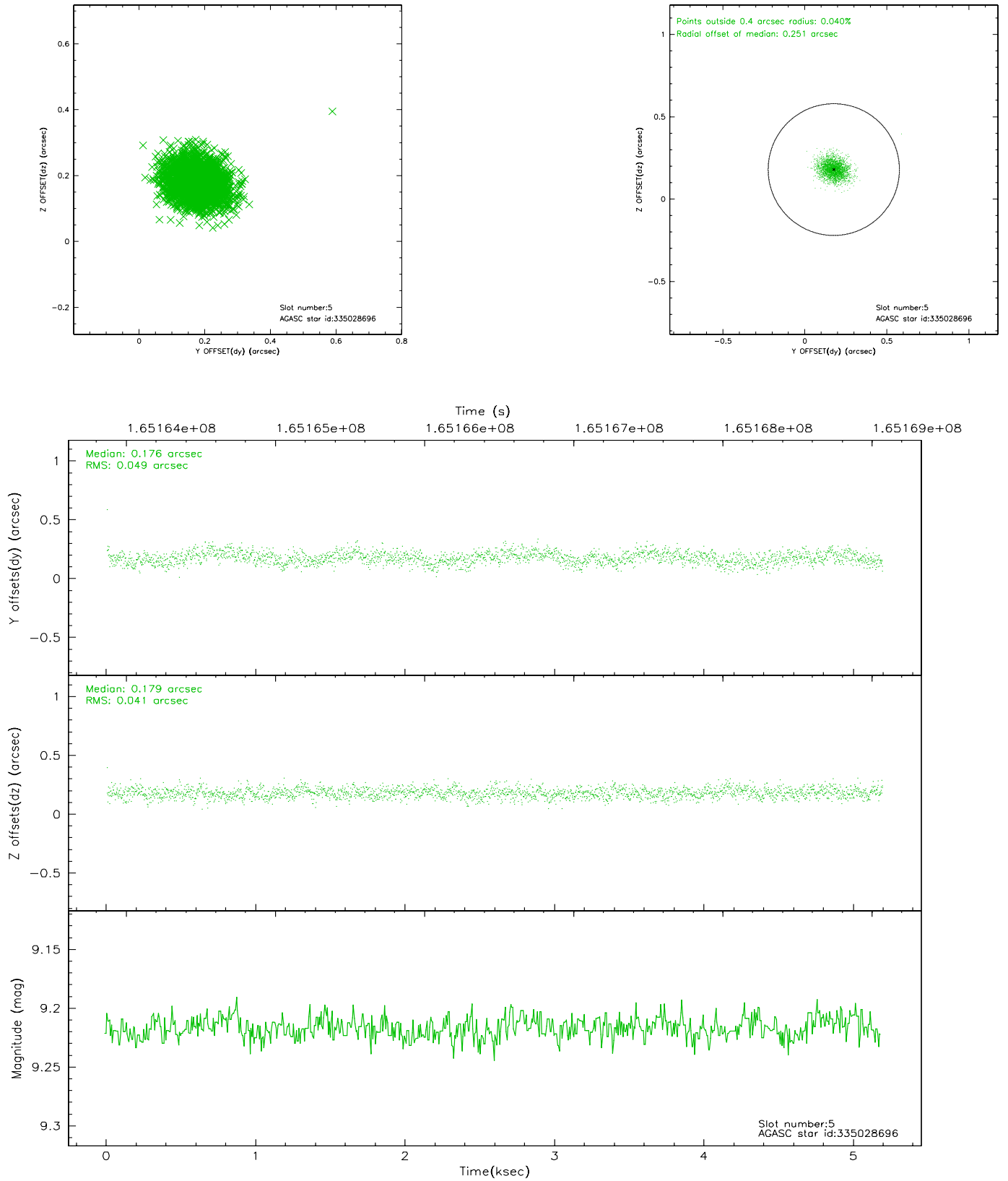
### 2.4.1 Slot 3



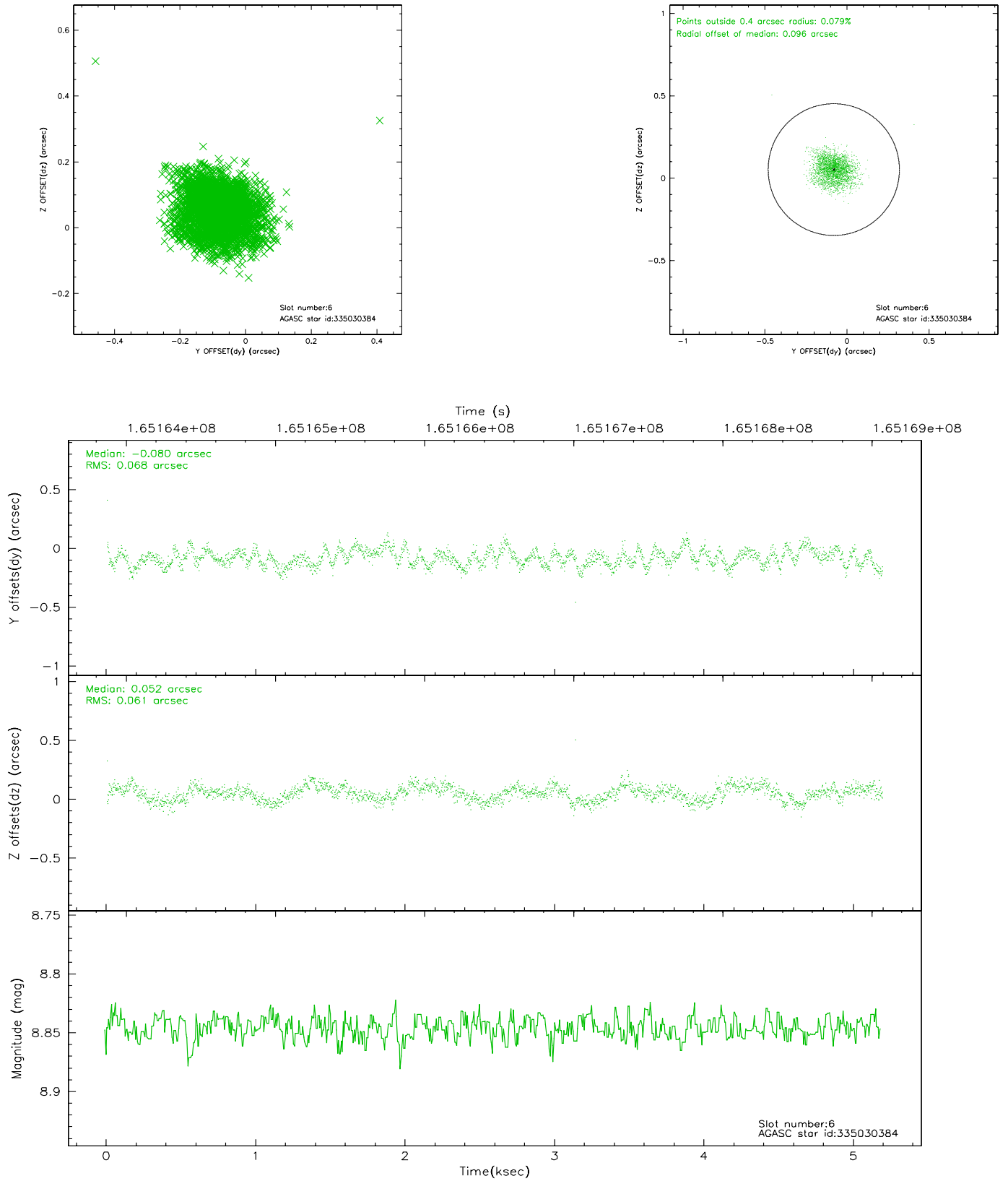
## 2.4.2 Slot 4



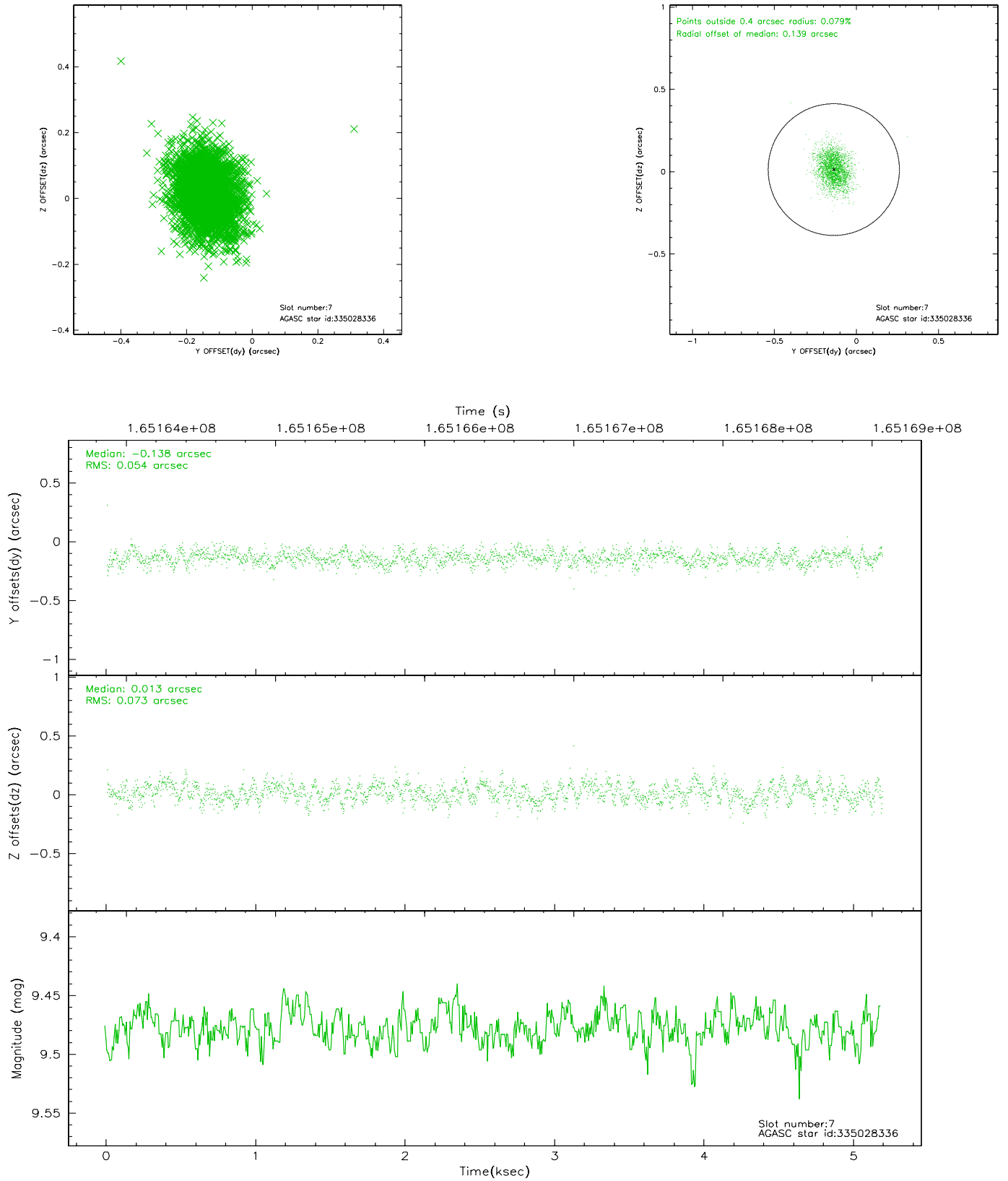
### 2.4.3 Slot 5



## 2.4.4 Slot 6

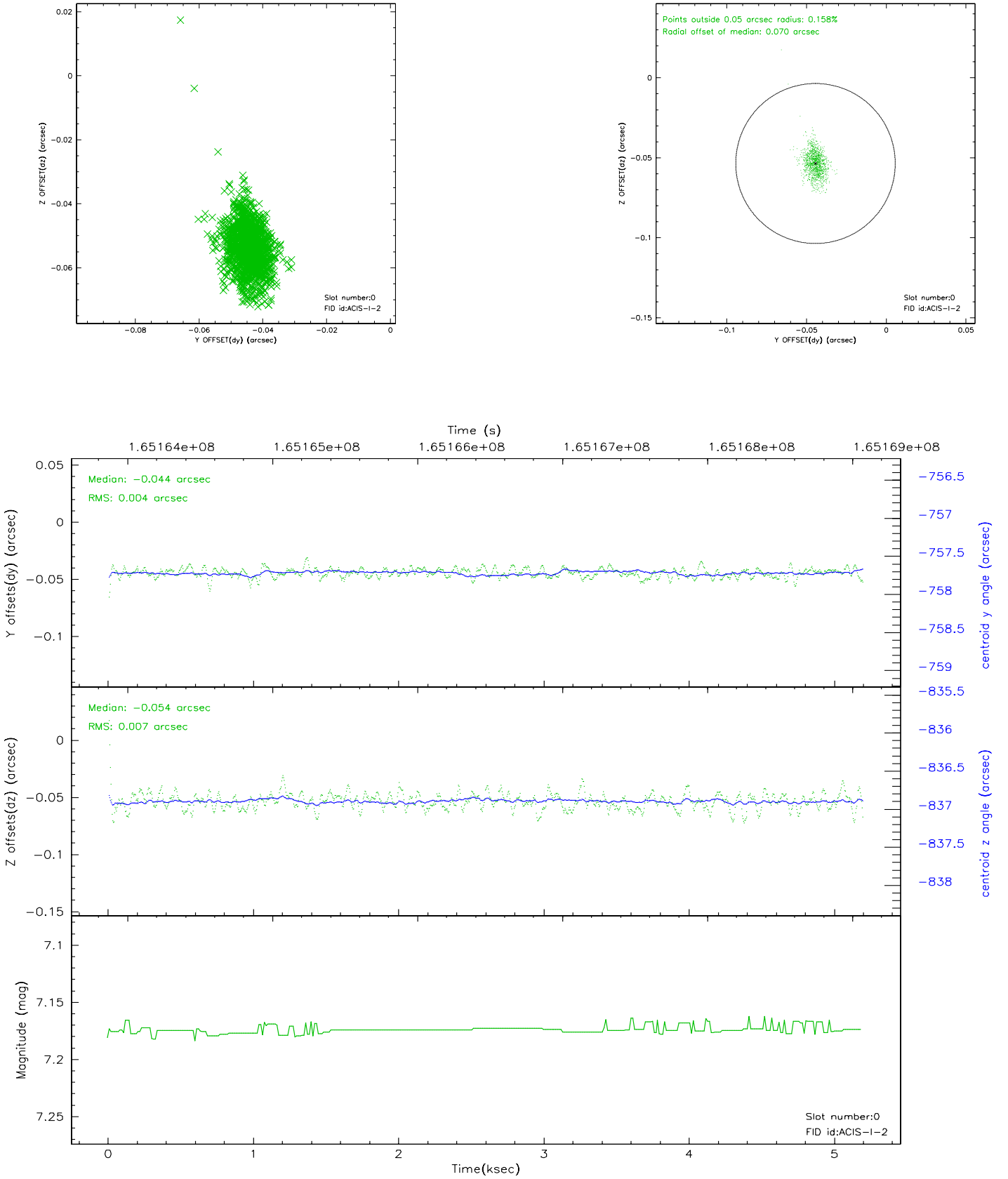


## 2.4.5 Slot 7

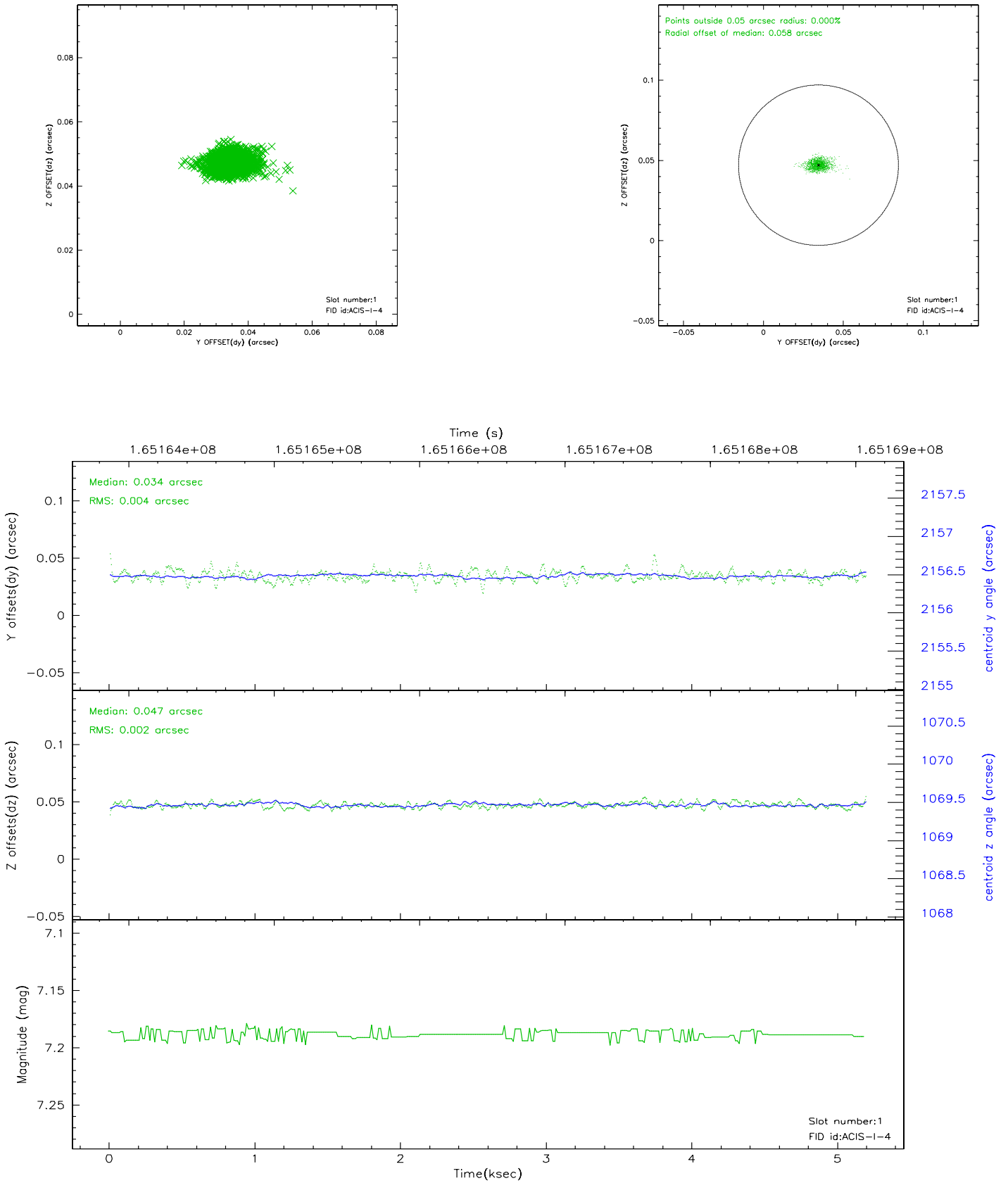


## 2.5 FID Slots

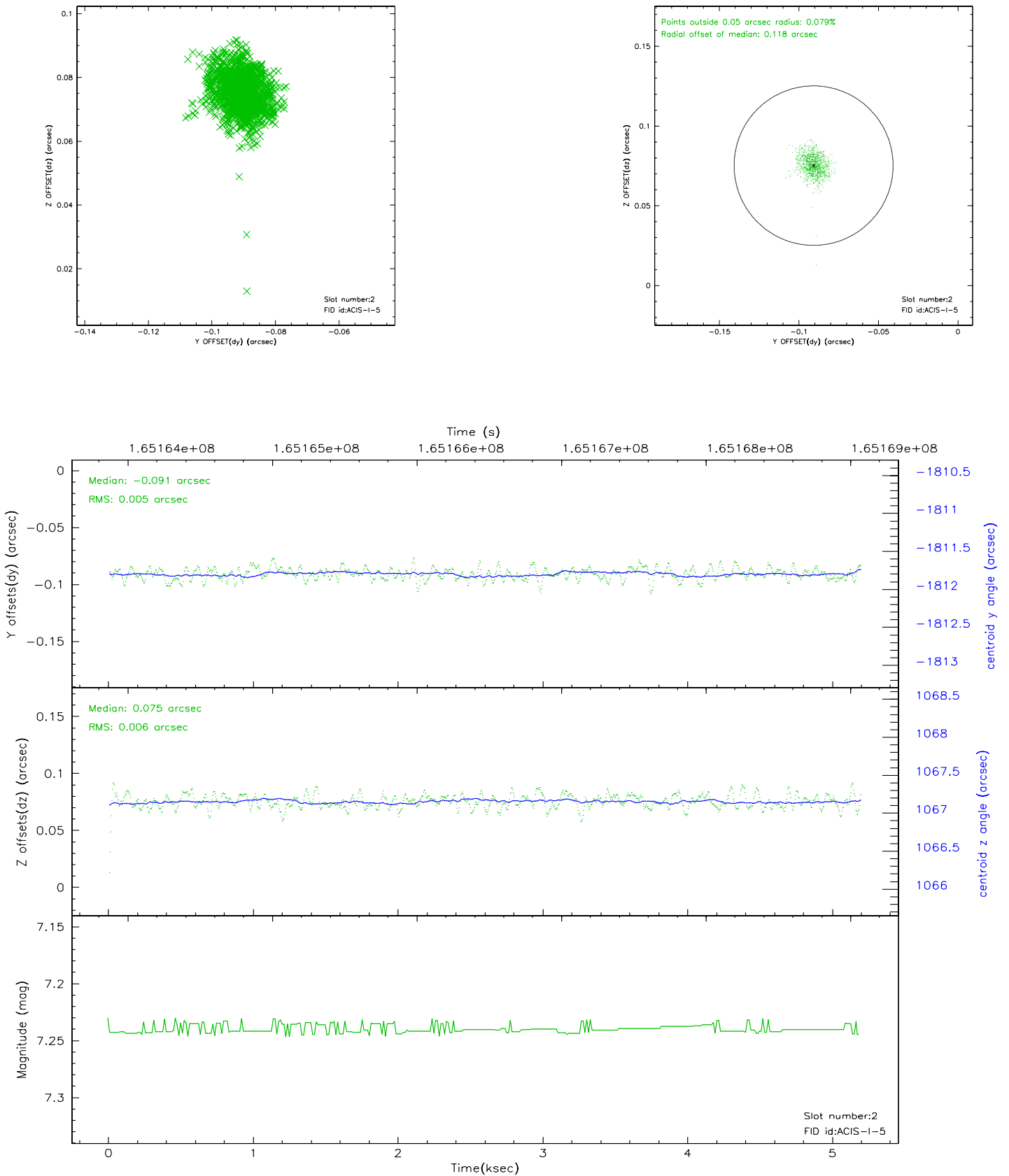
### 2.5.1 Slot 0



## 2.5.2 Slot 1

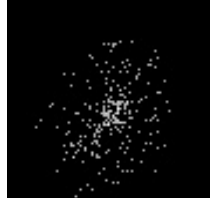


### 2.5.3 Slot 2



### 3 Point Sources

10.40 arcmin



## A Summary

### A.1 Status

V&V Scientist	Jen Lauer
V&V Date (YYYY-MM-DD)	2006.07.30
V&V Edition	1
V&V Disposition and Status	OK
V&V Charge Time	4.777

### A.2 Comments