

# V&V Reference Report

## L2 ASCDS Version : 8.4.5

Observation 4144 - L2 Version 3  
Chandra X-Ray Center

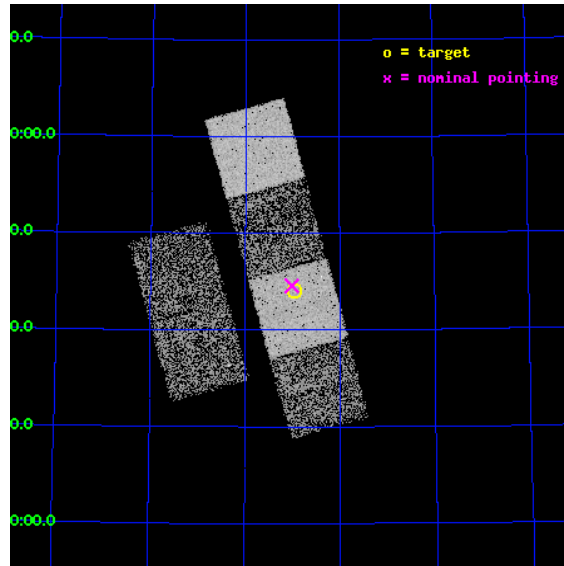
L2 Processing Date : Oct 26 2012

## Contents

<b>1</b>	<b>Front</b>	<b>2</b>
<b>2</b>	<b>OBI</b>	<b>3</b>
2.1	OBI . . . . .	3
2.1.1	Images . . . . .	3
2.1.2	Bias . . . . .	3
2.1.3	Parameters . . . . .	4
2.1.4	Events . . . . .	4
2.2	Compared Parameters . . . . .	5
2.3	Aspect . . . . .	6
2.4	Star Slots . . . . .	9
2.4.1	Slot 3 . . . . .	9
2.4.2	Slot 4 . . . . .	10
2.4.3	Slot 5 . . . . .	11
2.4.4	Slot 6 . . . . .	12
2.4.5	Slot 7 . . . . .	13
2.5	FID Slots . . . . .	14
2.5.1	Slot 0 . . . . .	14
2.5.2	Slot 1 . . . . .	15
2.5.3	Slot 2 . . . . .	16
<b>A</b>	<b>Summary</b>	<b>17</b>
A.1	Status . . . . .	17
A.2	Comments . . . . .	17

# 1 Front

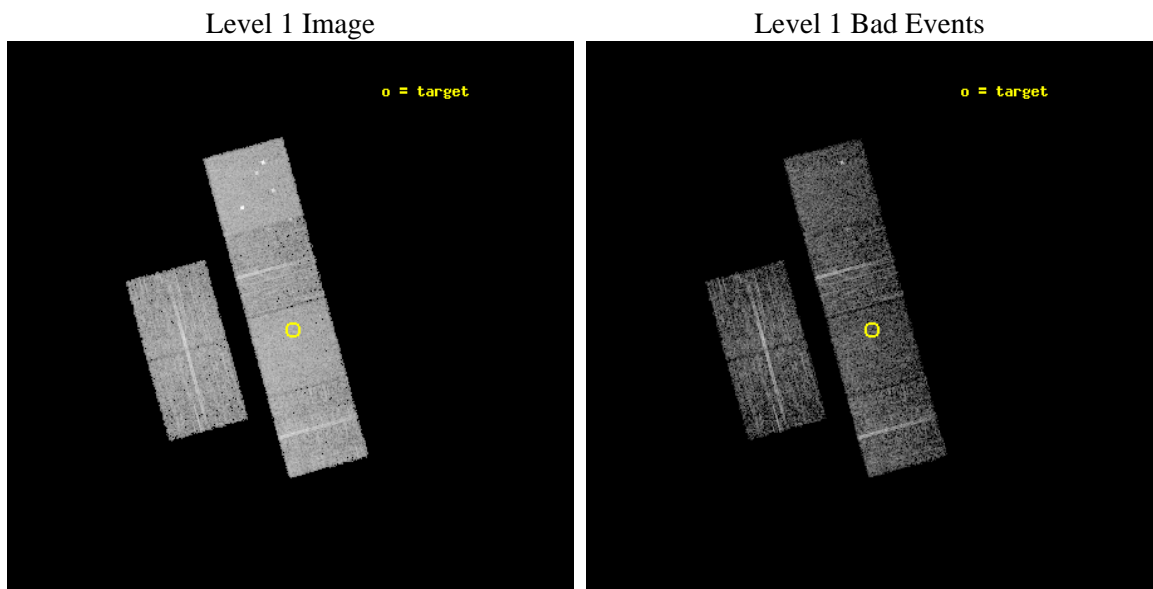
seq_num	700823	Sequence number
obs_id	4144	Observation id
title	OBSCURED HIGH REDSHIFT RADIO GALAXIES	Proposal title
observer	Wil van Bruegel	Principal investigator
object	J2044+7044	Source name
dtcycle	0	&#160
cycle	P	events from which exps? Prim/Second/Both
ra_targ	311.240833	Observer's specified target RA [deg]
dec_targ	70.734389	Observer's specified target Dec [deg]
ra_nom	311.2532394475	Nominal RA [deg]
dec_nom	70.743102669806	Nominal Dec [deg]
roll_nom	74.759372026994	Nominal Roll [deg]
revision	3	Processing version of data
ontime	5061.2238436937	Sum of GTIs [s]
livetime	4997.1355798818	Livetime [s]
ontime2	5061.264883697	Sum of GTIs [s]
ontime3	5061.1007236838	Sum of GTIs [s]
ontime5	5061.1828036904	Sum of GTIs [s]
ontime6	5061.1417636871	Sum of GTIs [s]
ontime7	5061.2238436937	Sum of GTIs [s]
ontime8	5061.0596837103	Sum of GTIs [s]
l2events	48021	Number of level 2 events



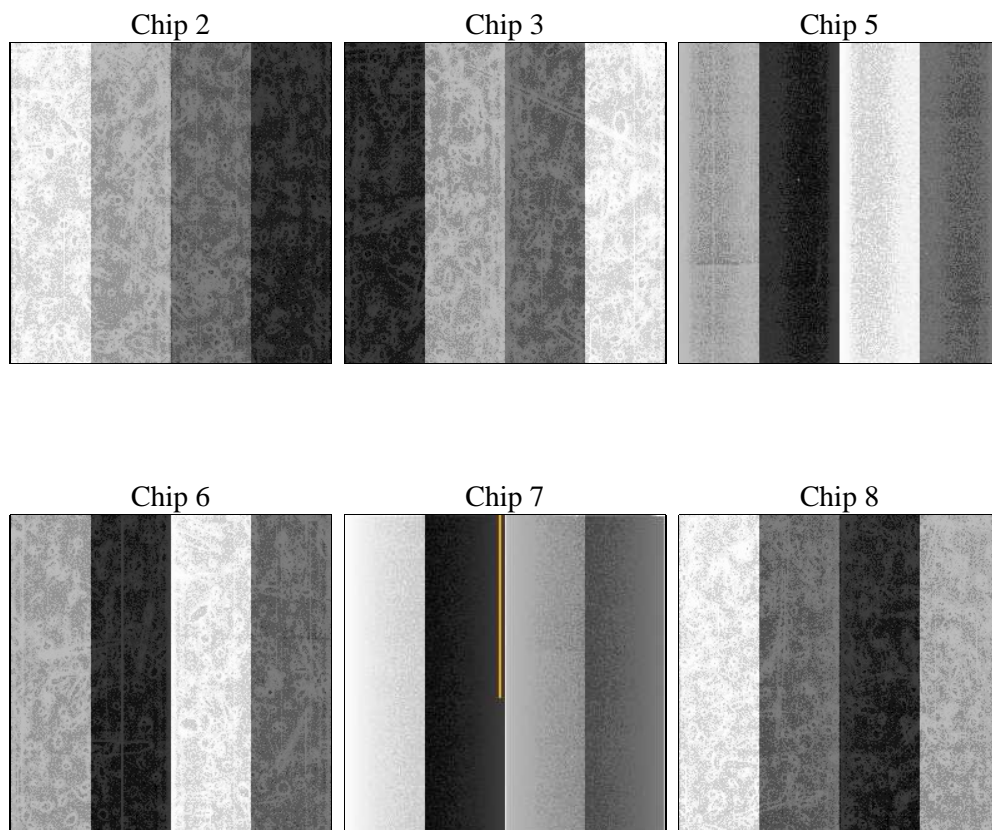
## 2 OBI

### 2.1 OBI

#### 2.1.1 Images



#### 2.1.2 Bias



### 2.1.3 Parameters

obi_num	0	Obi number	sched_exp_time	5100.000000	[s] Scheduled observation exposure time
ascdsver	8.4.5	Processing system revision	ontime	5061.2238436937	Sum of GTIs [s]
caldbver	4.5.2	&#160	ontime2	5061.264883697	Sum of GTIs [s]
date	2012-10-26T13:17:44	Date and time of file creation	ontime3	5061.1007236838	Sum of GTIs [s]
revision	3	Processing version of data	ontime5	5061.1828036904	Sum of GTIs [s]
			ontime6	5061.1417636871	Sum of GTIs [s]
			ontime7	5061.2238436937	Sum of GTIs [s]
			ontime8	5061.0596837103	Sum of GTIs [s]
			l1events	218538	Number of level 1 events

### 2.1.4 Events

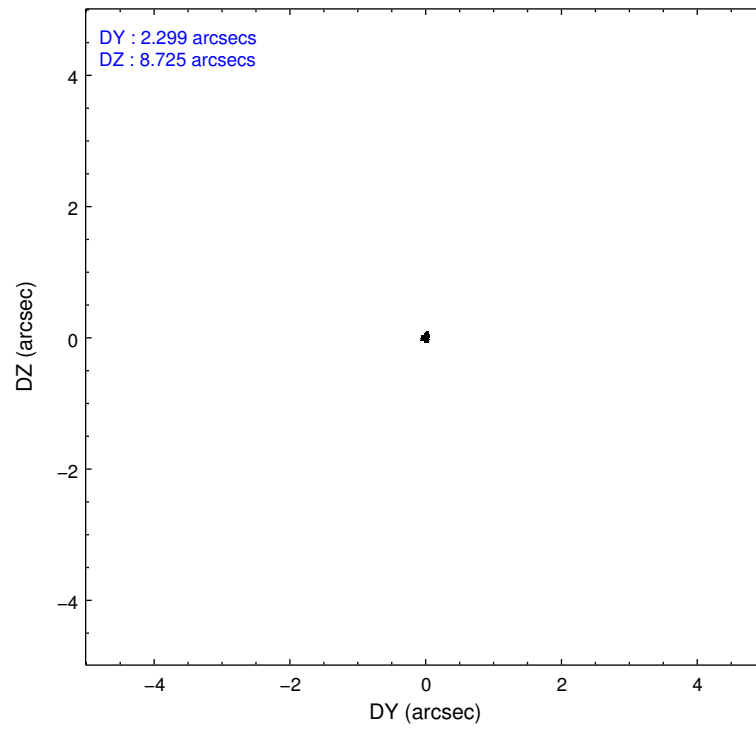
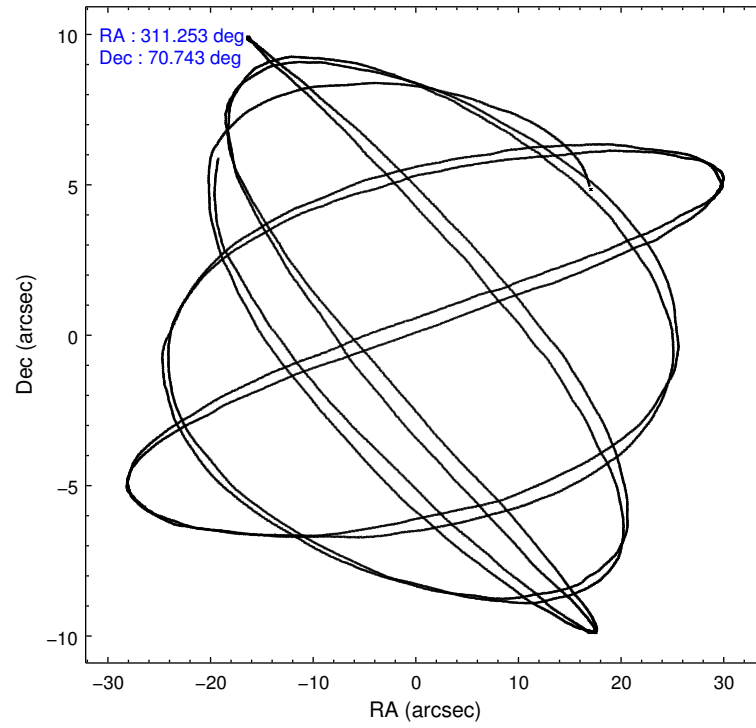
	ccd 2	ccd 3	ccd 5	ccd 6	ccd 7	ccd 8		ccd 2	ccd 3	ccd 5	ccd 6	ccd 7	ccd 8
level 1 events	31942	30150	46955	30819	40775	37897	grade 0 events	1515	1634	3209	1403	1479	2643
rejected events	28433	26500	25234	27263	24093	29902		4%	5%	6%	4%	3%	6%
rejected %	89%	87%	53%	88%	59%	78%	grade 1 events	19	17	68	11	37	30
								0%	0%	0%	0%	0%	0%
							grade 2 events	729	714	6176	748	3403	1680
								2%	2%	13%	2%	8%	4%
							grade 3 events	349	348	841	381	1504	815
								1%	1%	1%	1%	3%	2%
							grade 4 events	328	346	802	357	1464	819
								1%	1%	1%	1%	3%	2%
							grade 5 events	1212	1410	3384	1409	3925	1804
								3%	4%	7%	4%	9%	4%
							grade 6 events	589	611	10709	669	8846	2042
								1%	2%	22%	2%	21%	5%
							grade 7 events	27201	25070	21766	25841	20117	28064
								85%	83%	46%	83%	49%	74%

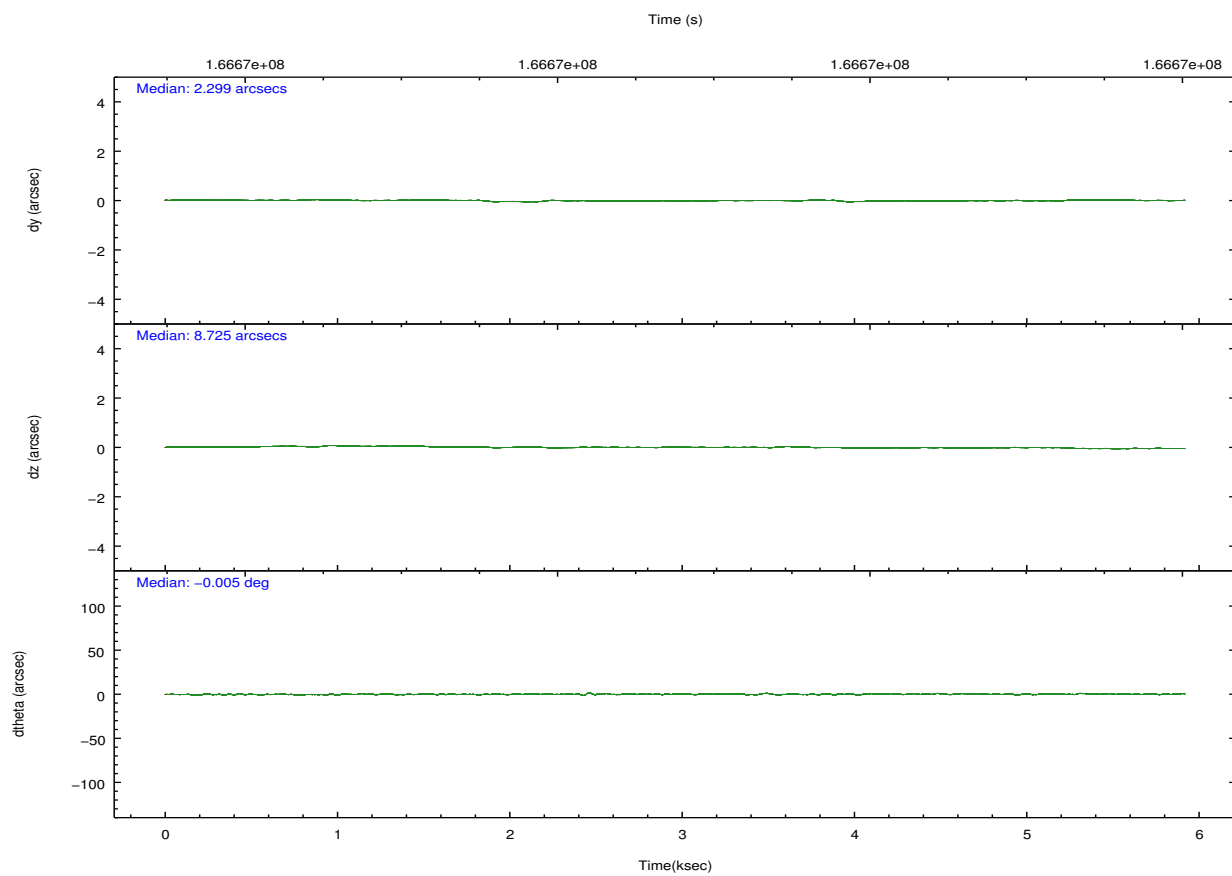
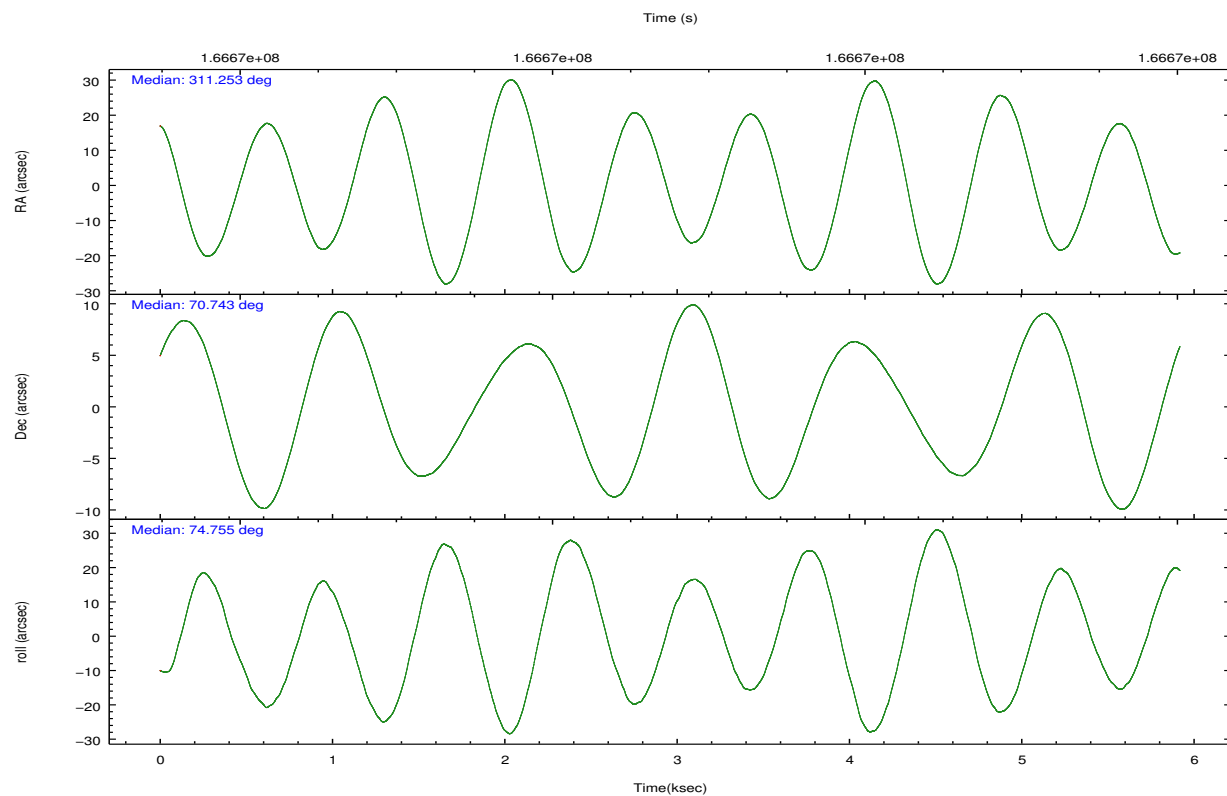


## 2.2 Compared Parameters

Parameter	Planned	Actual	Parameter	Planned	Actual
Instrument	ACIS	ACIS	Obspar format version number	7	7
Detector	ACIS-235678	ACIS-235678	Obspar file type	PREDICTED	ACTUAL
Grating	NONE	NONE	Obspar update status	NONE	UPDATED
Data mode	FAINT	FAINT	Number of optional ACIS chips dropped	0	0
Observation mode	POINTING	POINTING	On-chip summing requested	N	N
[deg] Pointing RA	311.275467	311.2532394475037	Subarray requested	NONE	NONE
[deg] Pointing Dec	70.716888	70.74310266980595	Alternating exposures requested	N	N
[deg] Pointing Roll	74.581772	74.75937202699447	[s] Primary exposure time	0.000000	3.2
[mm] SIM focus pos	-0.684267	-0.6828225247311905			
[mm] SIM defocus	0	0.001444936568705701			
[mm] SIM translation stage pos	-190.132523	-190.1400660498719			
[mm] SIM translation stage offset	0	0.00754346686406393			
[s] Observation start time (MET)	166668611.184000	166667336.00383			
Observation start date	2003-04-14T00:49:07	2003-04-14T00:28:56			
[s] Observation end time (MET)	166673711.184000	166674489.99163			
Observation end date	2003-04-14T02:14:07	2003-04-14T02:28:09			
Read mode	TIMED	TIMED			

## 2.3 Aspect



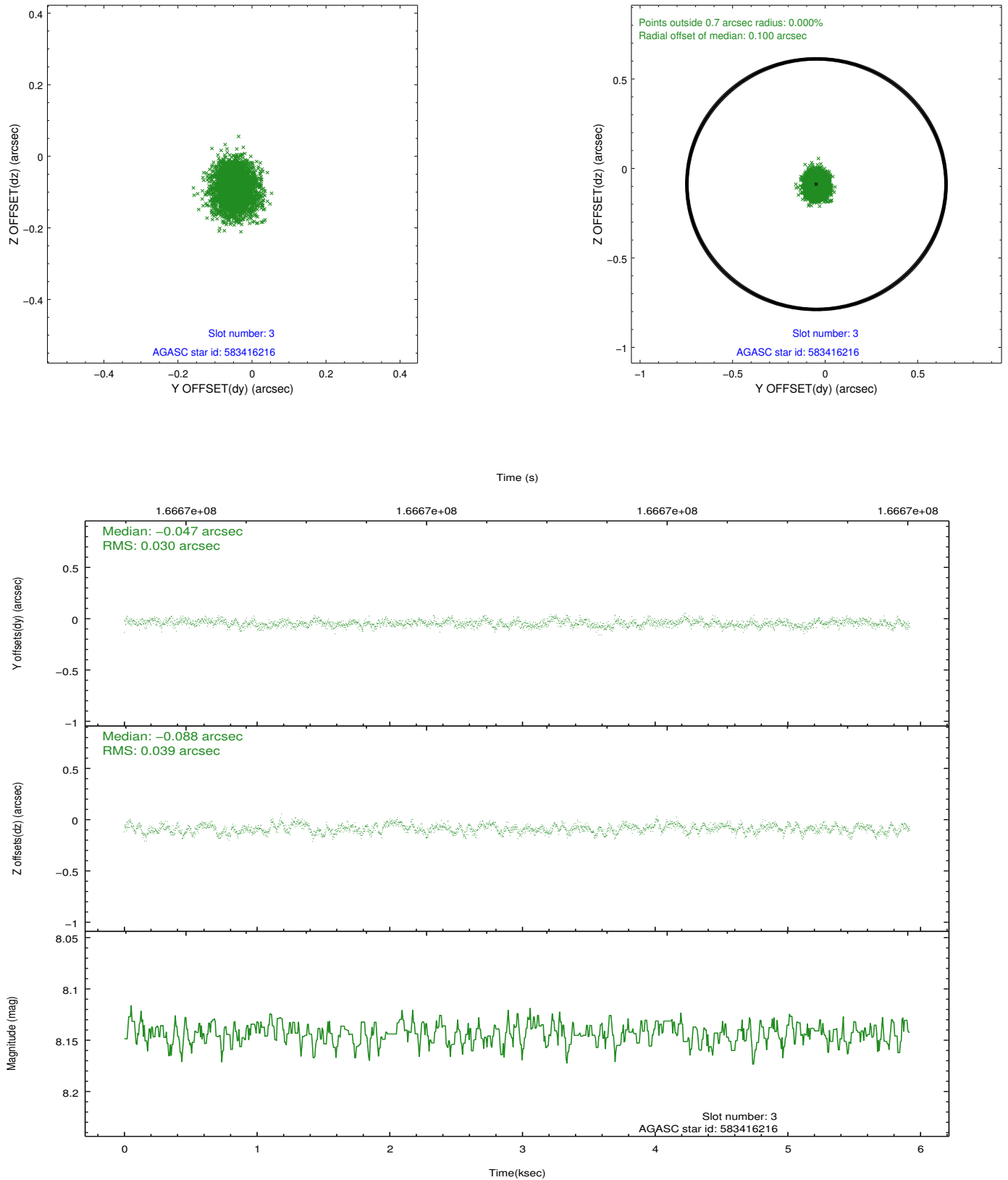


### Slot Statistics

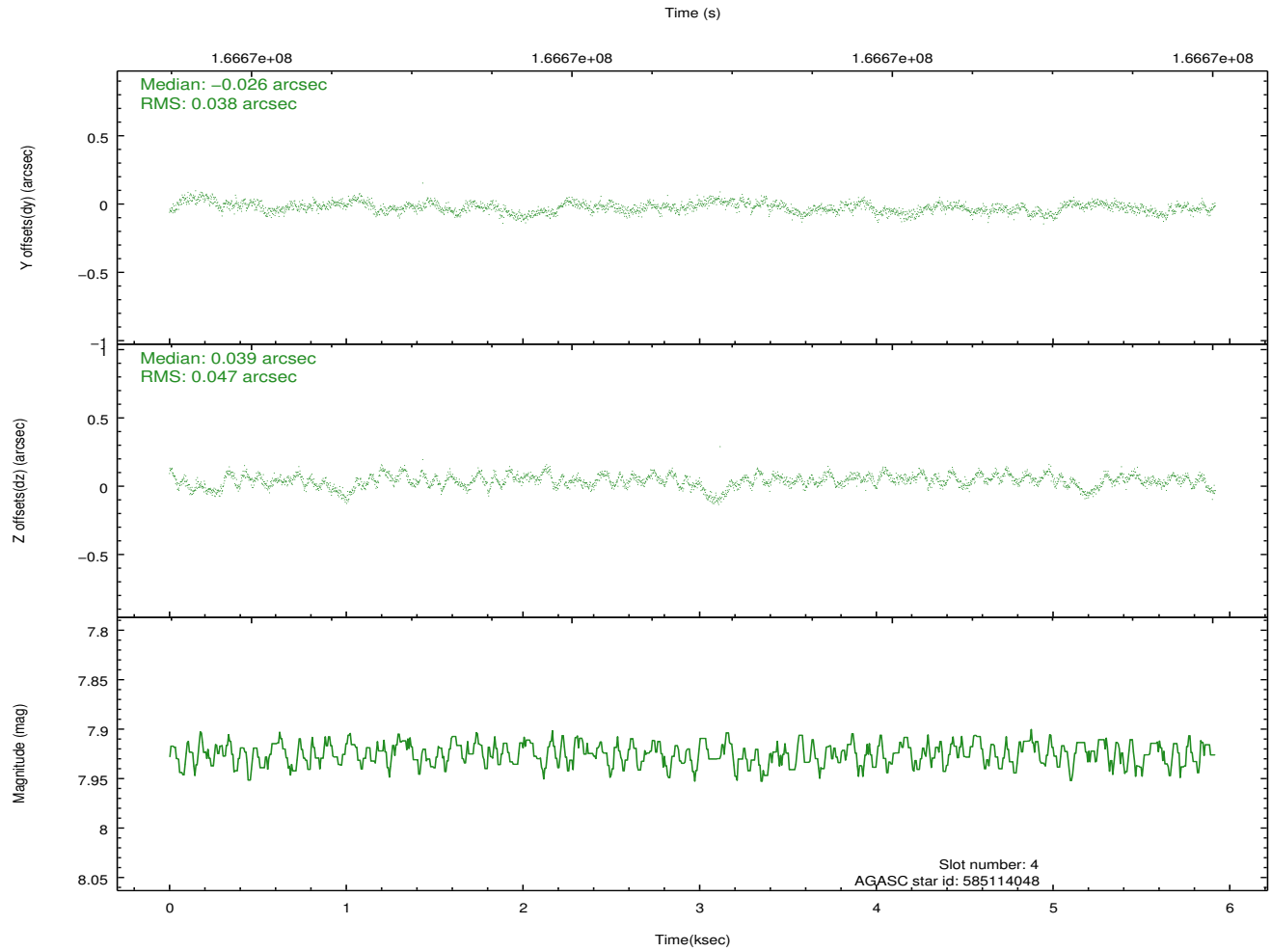
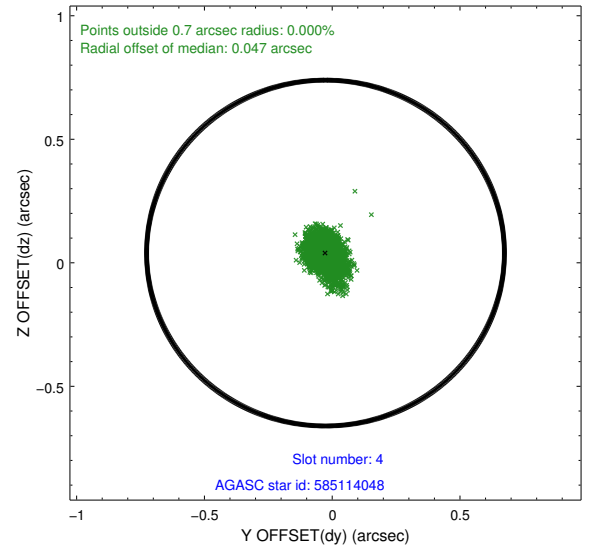
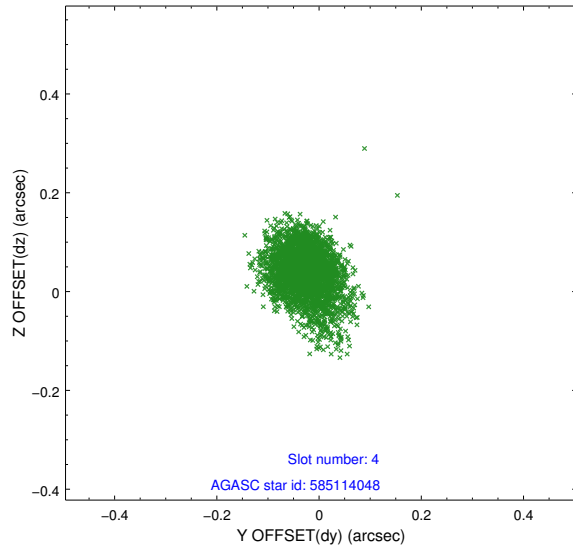
slot	status	id	mag	n_pts	med_dy	med_dz	dr1	dr2	ra	dec	mean_y	mean_z
0	FID	ACIS-S-1	7.19	1443	0.029	0.023	0.007	0.012	0.000000	0.000000	941.13	-1725.55
1	FID	ACIS-S-4	7.20	1443	-0.039	-0.026	0.006	0.010	0.000000	0.000000	2159.04	177.52
2	FID	ACIS-S-5	7.24	1443	-0.016	0.015	0.006	0.010	0.000000	0.000000	-1806.49	172.31
3	GUIDE	583416216	8.14	2886	-0.047	-0.088	0.053	0.085	311.039238	70.909039	593.64	452.08
4	GUIDE	585114048	7.93	2886	-0.026	0.039	0.063	0.106	312.198935	70.722795	320.84	-1050.03
5	GUIDE	585126256	9.98	2884	0.070	0.094	0.113	0.189	312.345364	70.278330	-1164.76	-1670.08
6	GUIDE	583409224	9.93	2884	-0.091	-0.123	0.126	0.198	309.667164	71.054621	696.04	2141.10
7	GUIDE	583935128	9.63	2884	0.098	0.080	0.104	0.172	309.719422	71.408471	1947.95	2390.53

## 2.4 Star Slots

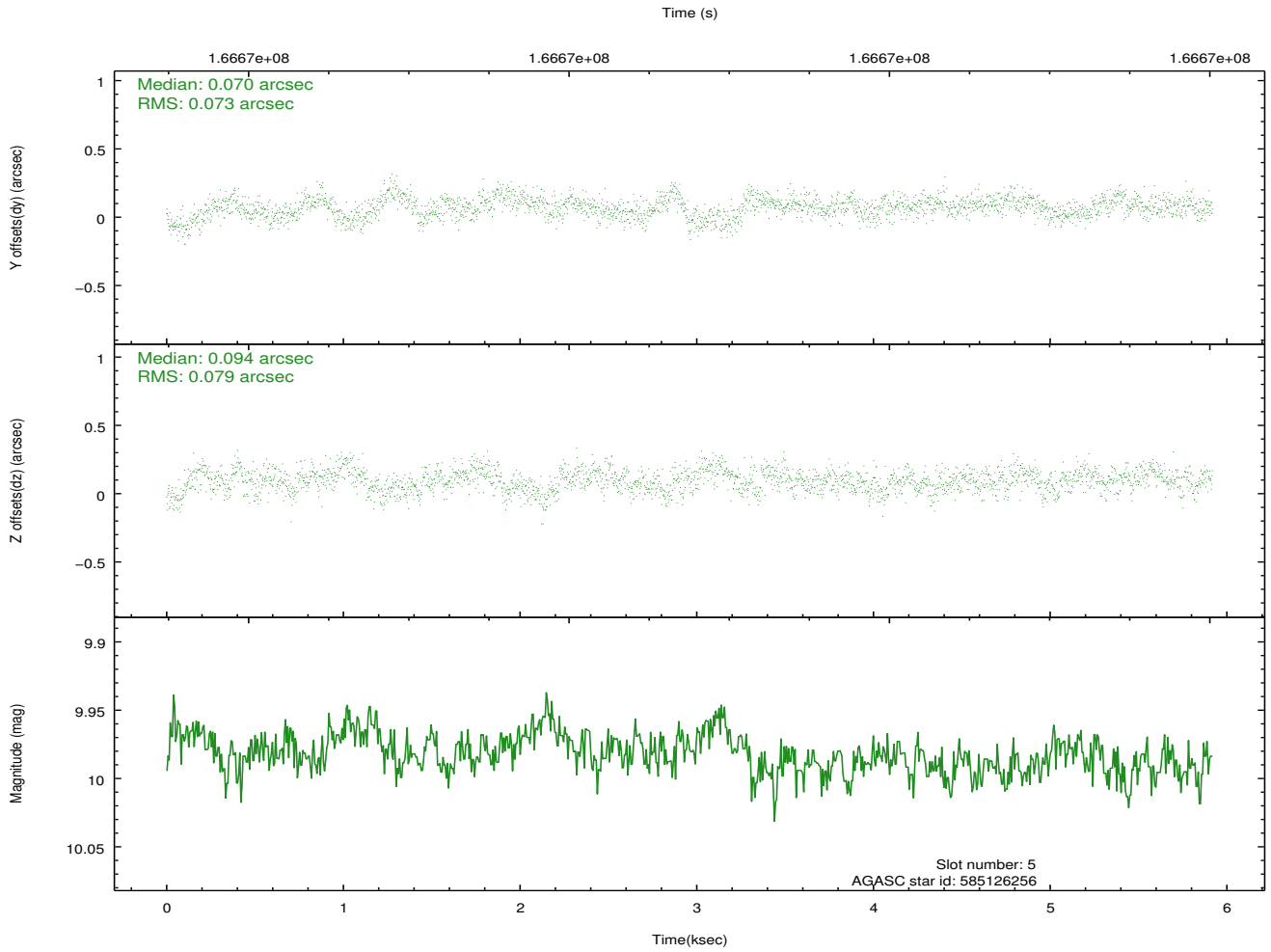
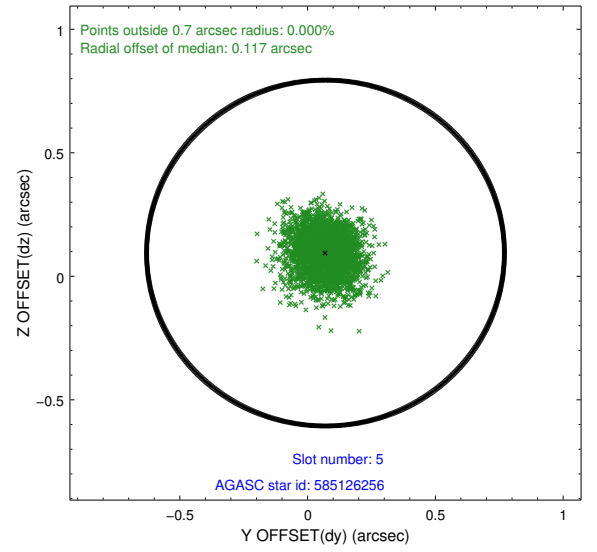
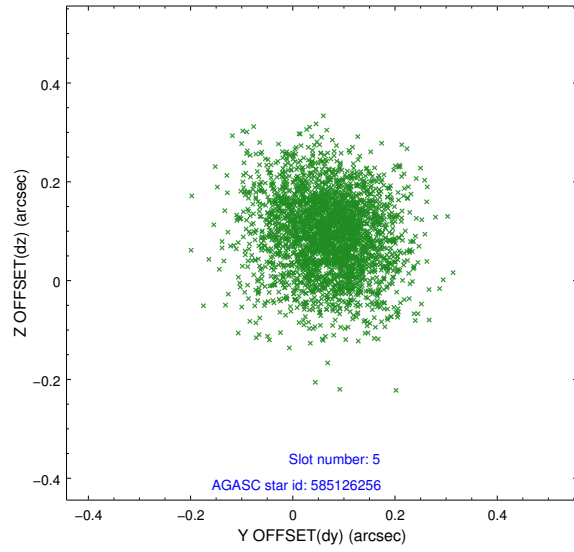
### 2.4.1 Slot 3



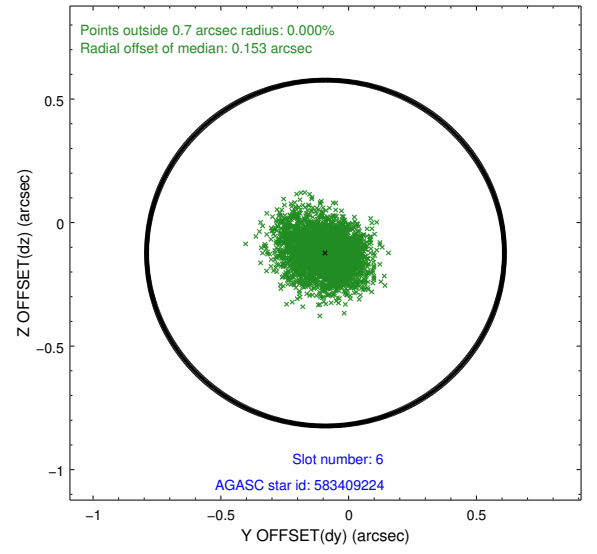
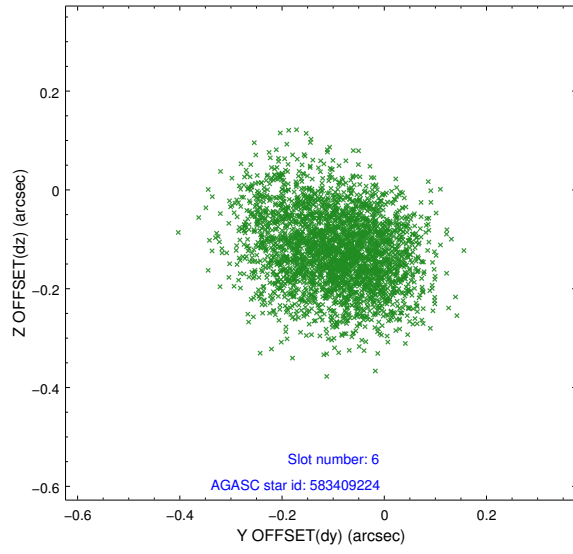
## 2.4.2 Slot 4



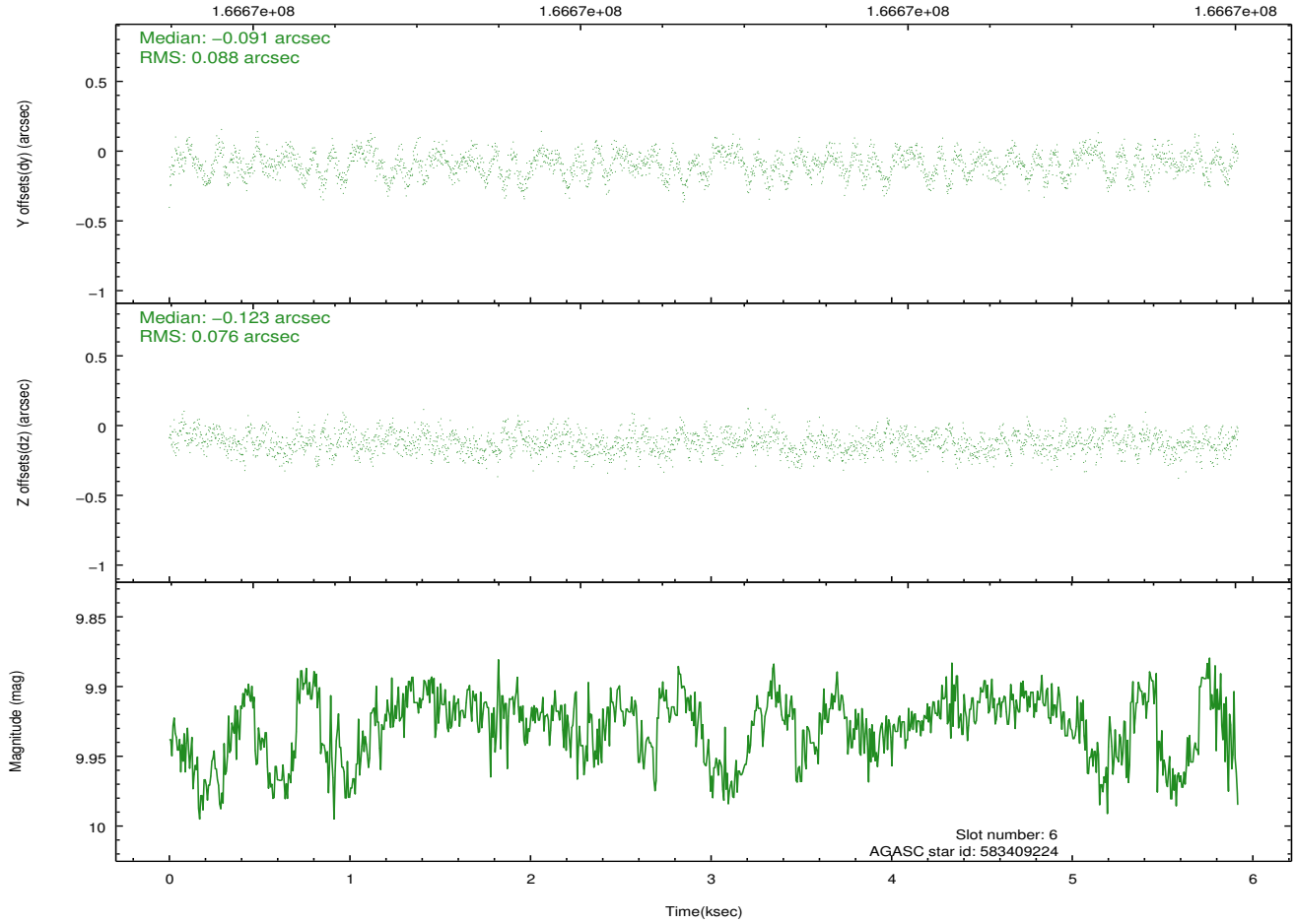
### 2.4.3 Slot 5



## 2.4.4 Slot 6

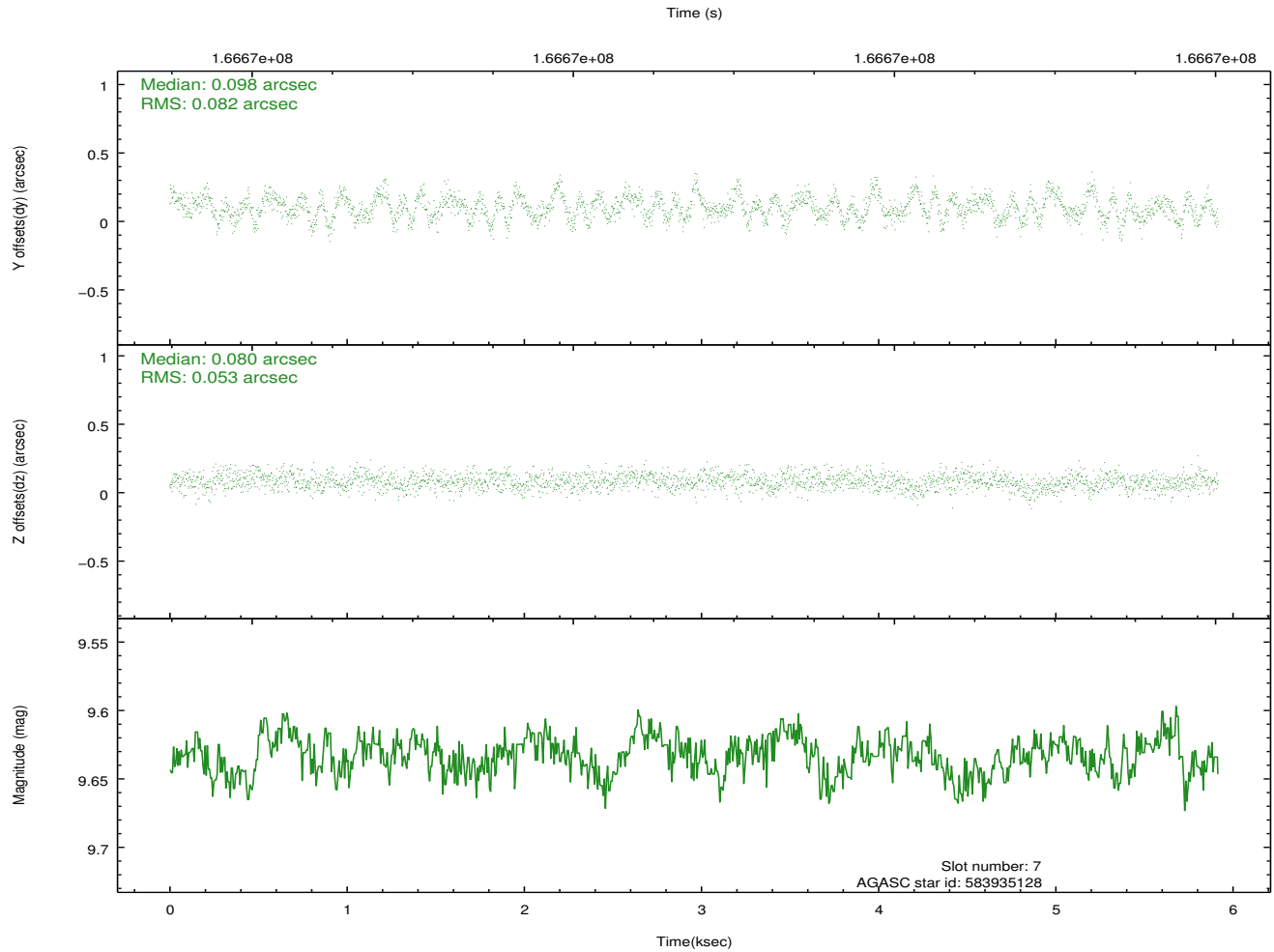
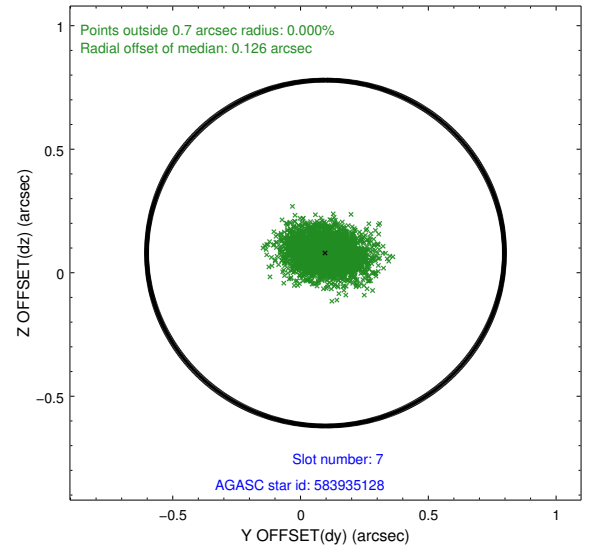
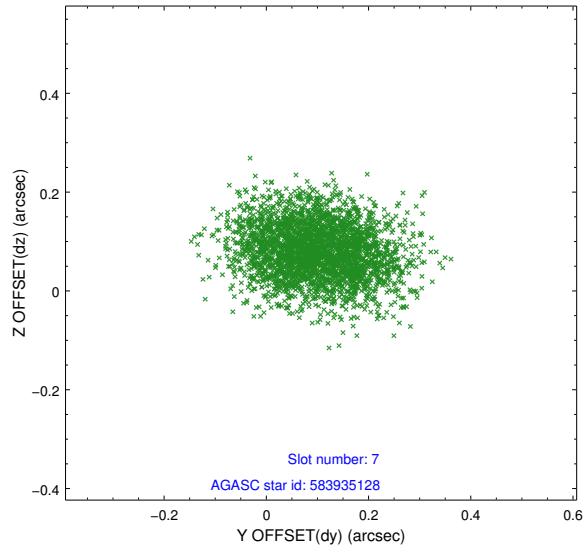


Time (s)



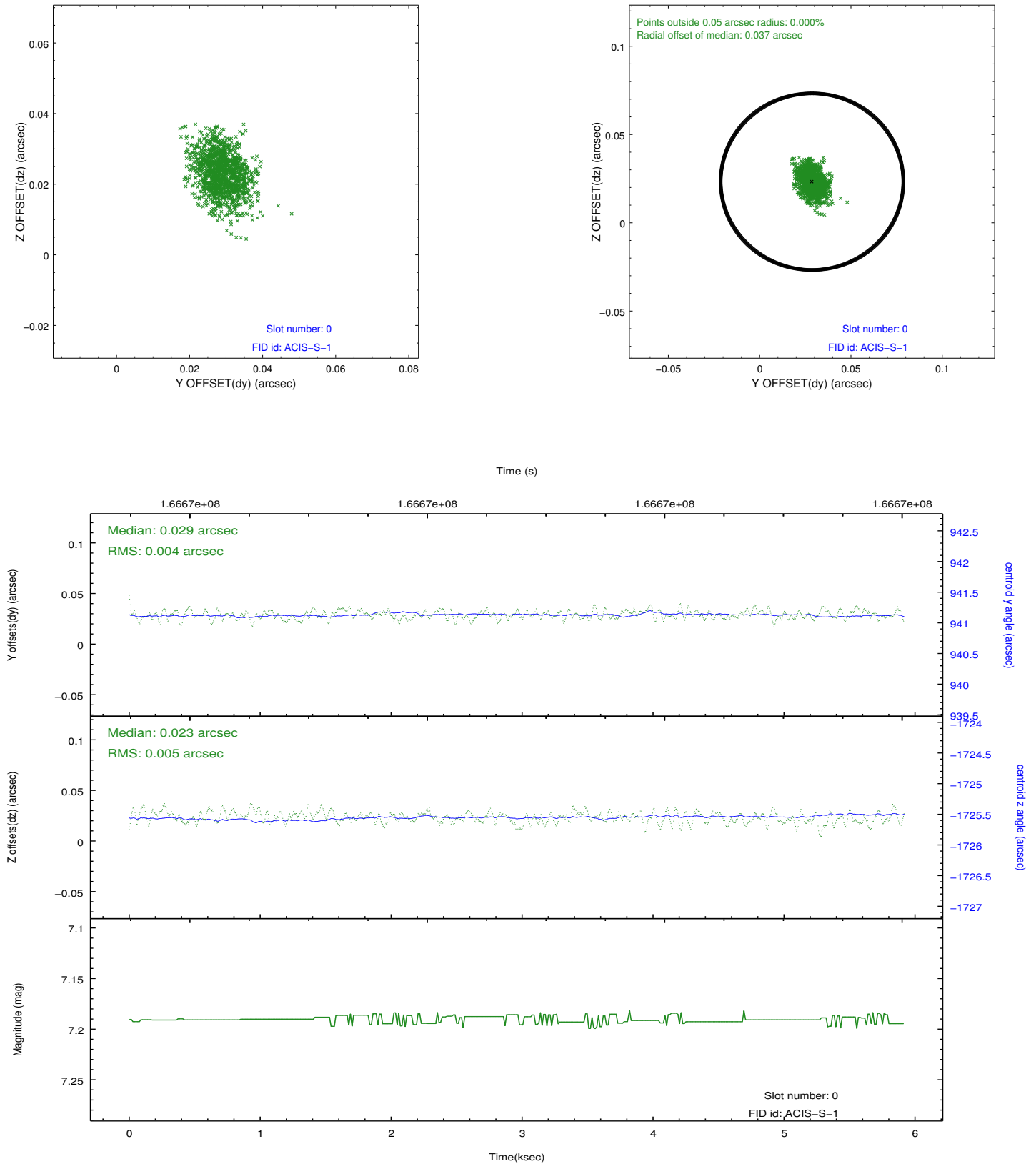


## 2.4.5 Slot 7

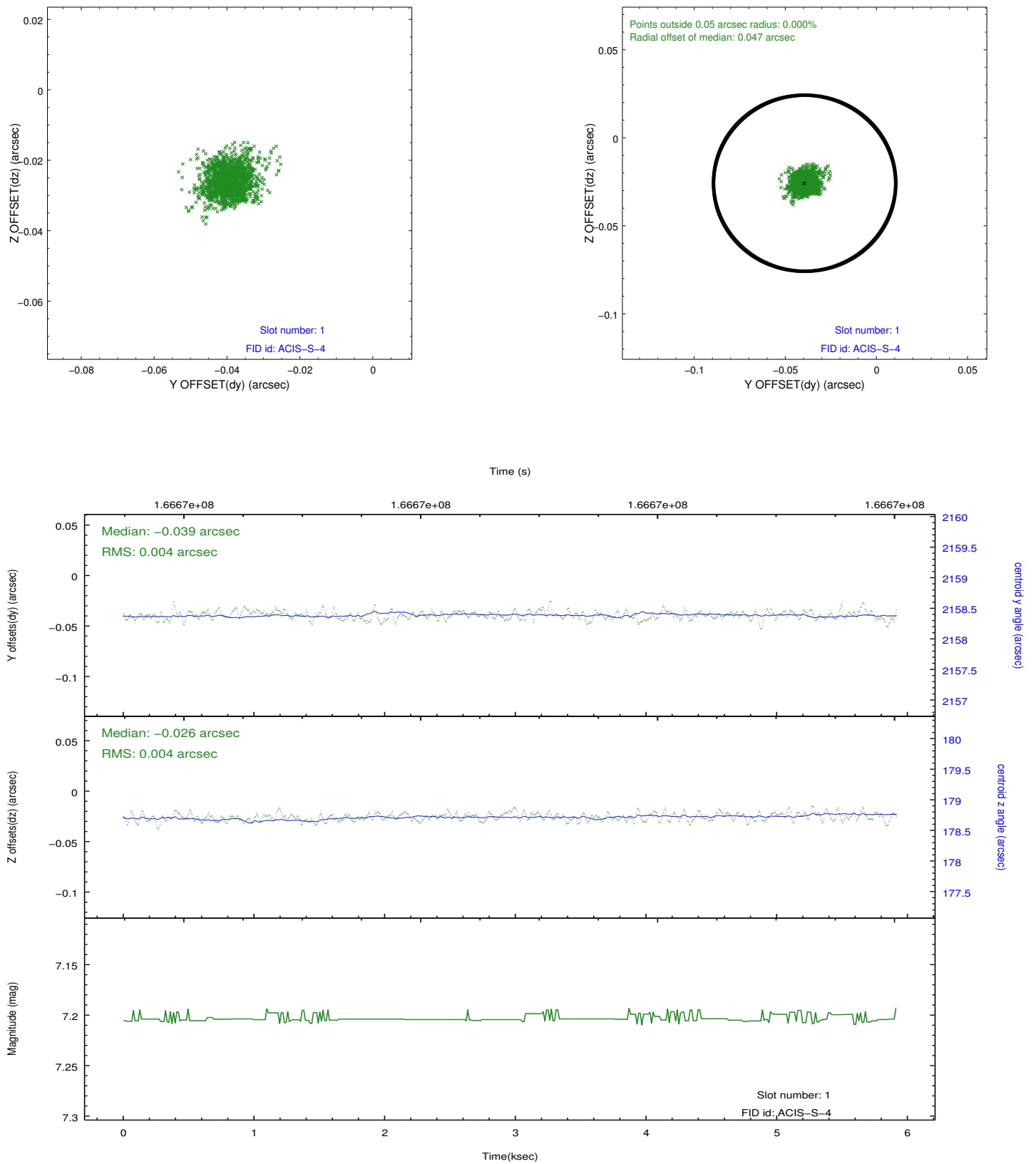


## 2.5 FID Slots

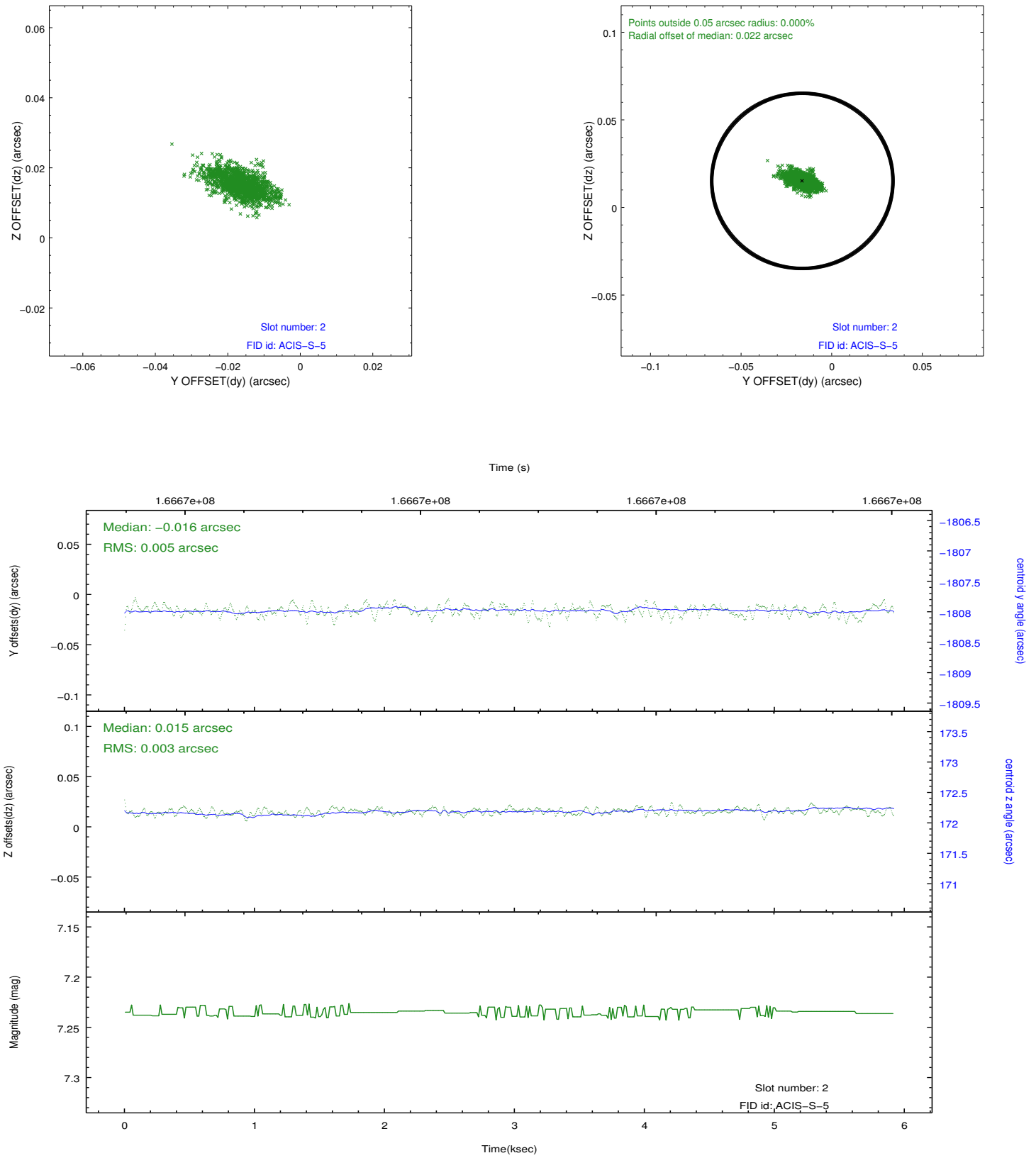
### 2.5.1 Slot 0



## 2.5.2 Slot 1



### 2.5.3 Slot 2



## A Summary

### A.1 Status

V&V Scientist	Jen Lauer
V&V Date (YYYY-MM-DD)	2012.11.14
V&V Edition	1
V&V Disposition and Status	OK
V&V Charge Time	5.062

### A.2 Comments