

# V&V Reference Report

## L2 ASCDS Version : 7.6.8.1

Observation 4144 - L2 Version 001  
Chandra X-Ray Center

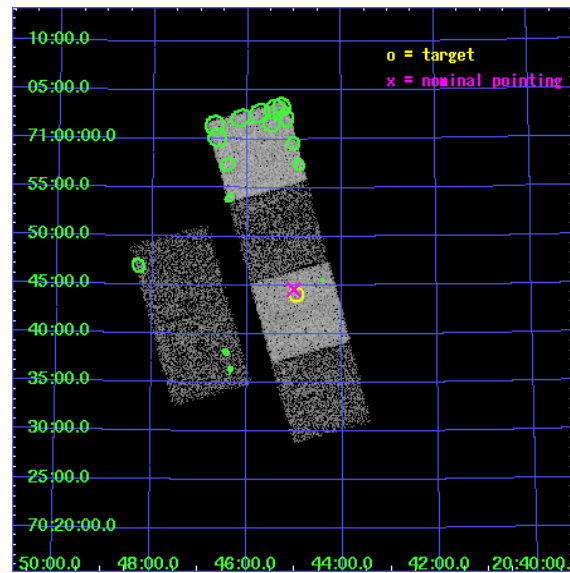
L2 Processing Date : Aug 4 2006

## Contents

<b>1</b>	<b>Front</b>	<b>2</b>
<b>2</b>	<b>OBI</b>	<b>3</b>
2.1	OBI . . . . .	3
2.1.1	Images . . . . .	3
2.1.2	Bias . . . . .	3
2.1.3	Parameters . . . . .	4
2.1.4	Events . . . . .	4
2.2	Compared Parameters . . . . .	5
2.3	Aspect . . . . .	6
2.4	Star Slots . . . . .	9
2.4.1	Slot 3 . . . . .	9
2.4.2	Slot 4 . . . . .	10
2.4.3	Slot 5 . . . . .	11
2.4.4	Slot 6 . . . . .	12
2.4.5	Slot 7 . . . . .	13
2.5	FID Slots . . . . .	14
2.5.1	Slot 0 . . . . .	14
2.5.2	Slot 1 . . . . .	15
2.5.3	Slot 2 . . . . .	16
<b>3</b>	<b>Point Sources</b>	<b>17</b>
<b>A</b>	<b>Summary</b>	<b>18</b>
A.1	Status . . . . .	18
A.2	Comments . . . . .	18

# 1 Front

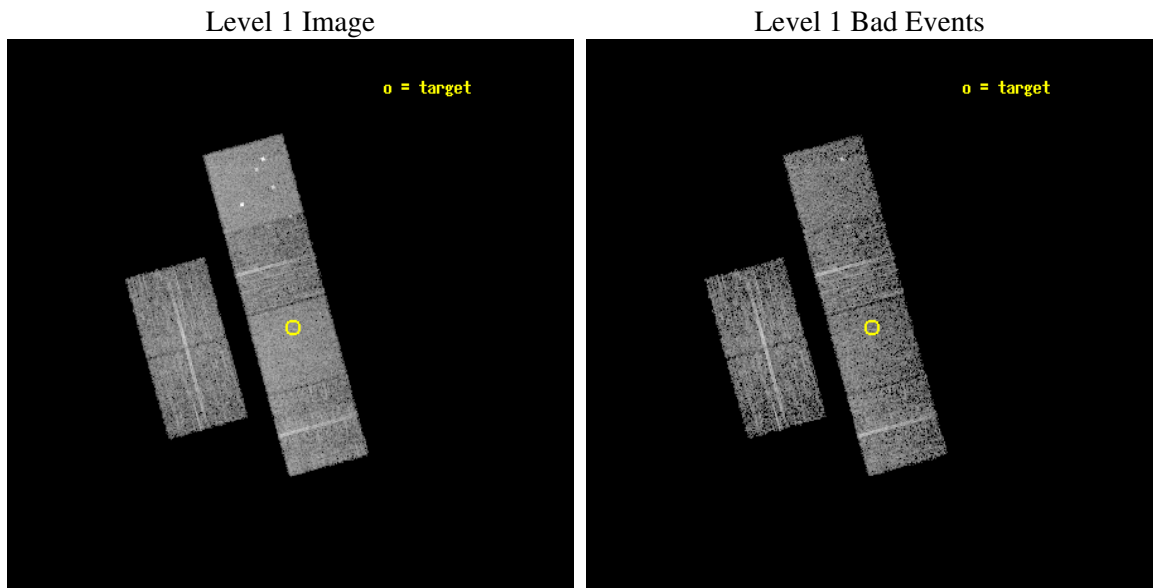
seq_num	700823
obs_id	4144
title	OBSCURED HIGH REDSHIFT RADIO GALAXIES
observer	Wil van Bruegel
object	J2044+7044
dtcycle	0
cycle	P
ra_targ	311.240833
dec_targ	70.734389
ra_nom	311.2532394475
dec_nom	70.743102669806
roll_nom	74.759372026994
revision	2
ontime	5062.3999811411
livetime	4998.2968243686
ontime2	5062.3999811411
ontime3	5062.3999811411
ontime5	5062.3999811411
ontime6	5062.3999811411
ontime7	5062.3999811411
ontime8	5062.3999811411
l2events	46152



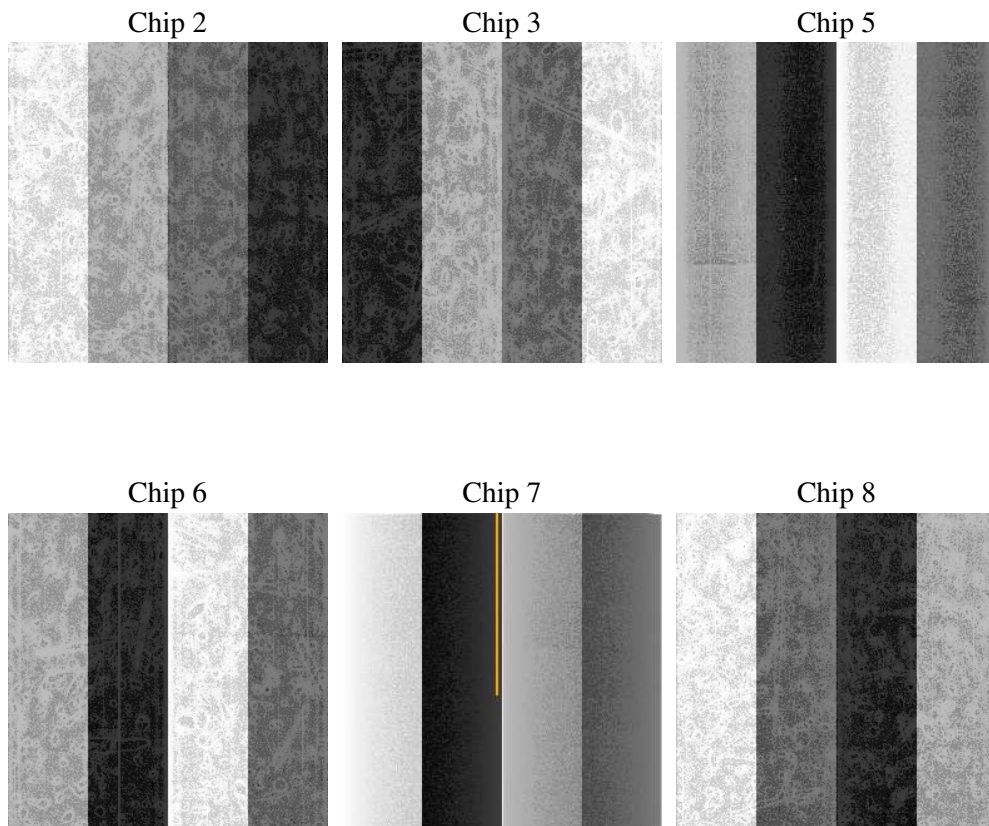
## 2 OBI

### 2.1 OBI

#### 2.1.1 Images



#### 2.1.2 Bias



### 2.1.3 Parameters

obi_num	0
ascdsver	7.6.8.1
caldsver	3.2.2
date	2006-08-04T17:12:25
revision	2

sched_exp_time	5100.000000
ontime	5065.6830141842
ontime2	5065.6830141842
ontime3	5065.6830141842
ontime5	5065.6830141842
ontime6	5065.6830141842
ontime7	5065.6830141842
ontime8	5065.6830141842
l1events	218538

### 2.1.4 Events

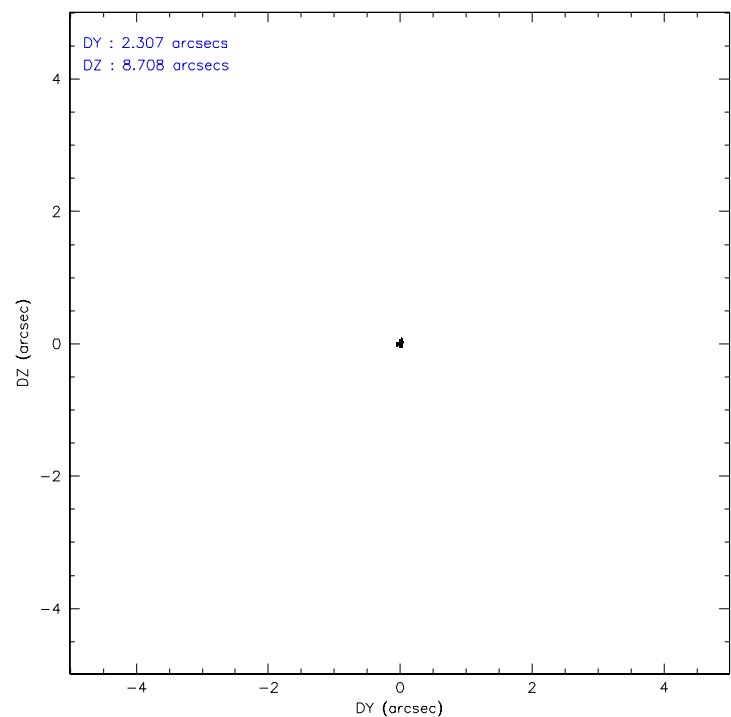
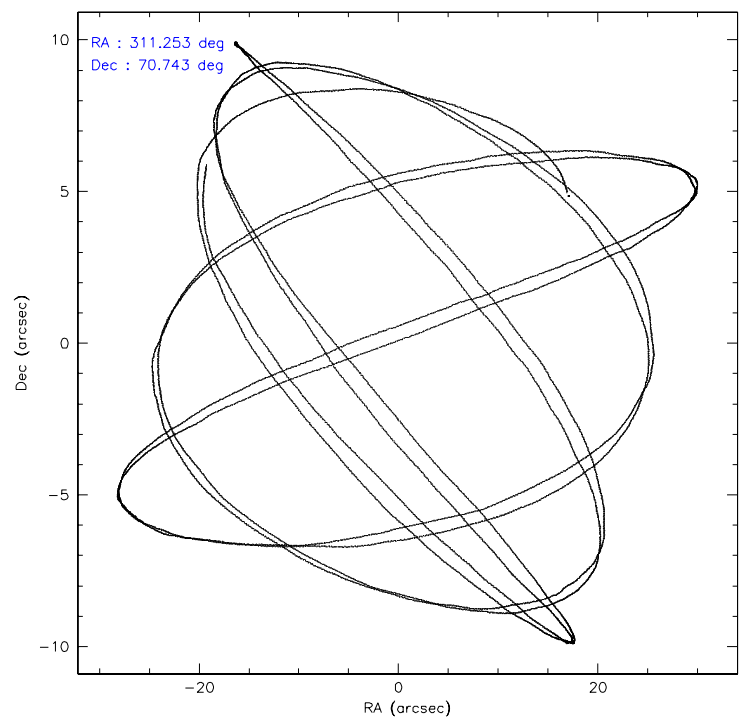
	ccd 2	ccd 3	ccd 5	ccd 6	ccd 7	ccd 8
level 1 events	31942	30150	46955	30819	40775	37897
rejected events	28433	26501	25911	27263	25322	29902
rejected %	89%	87%	55%	88%	62%	78%

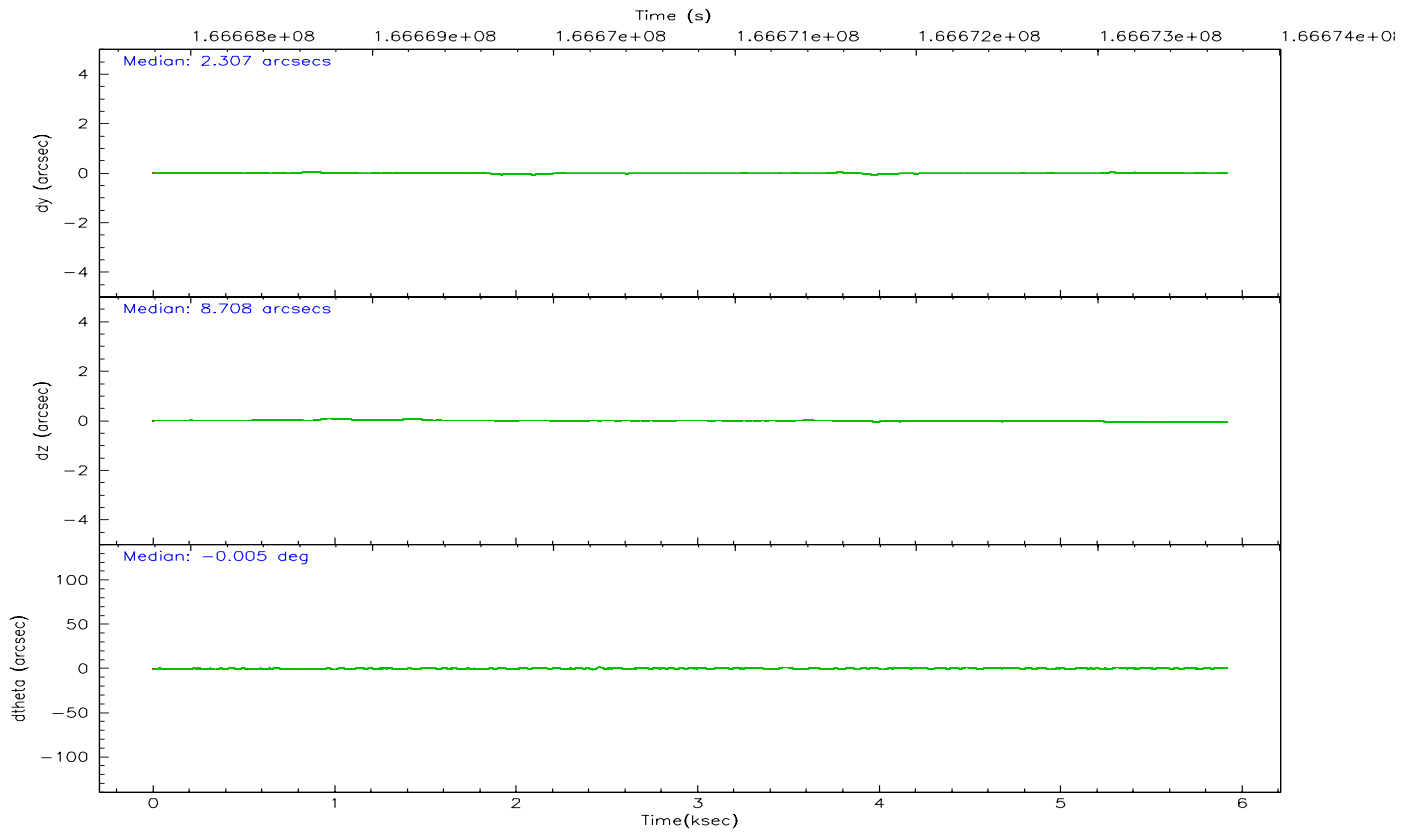
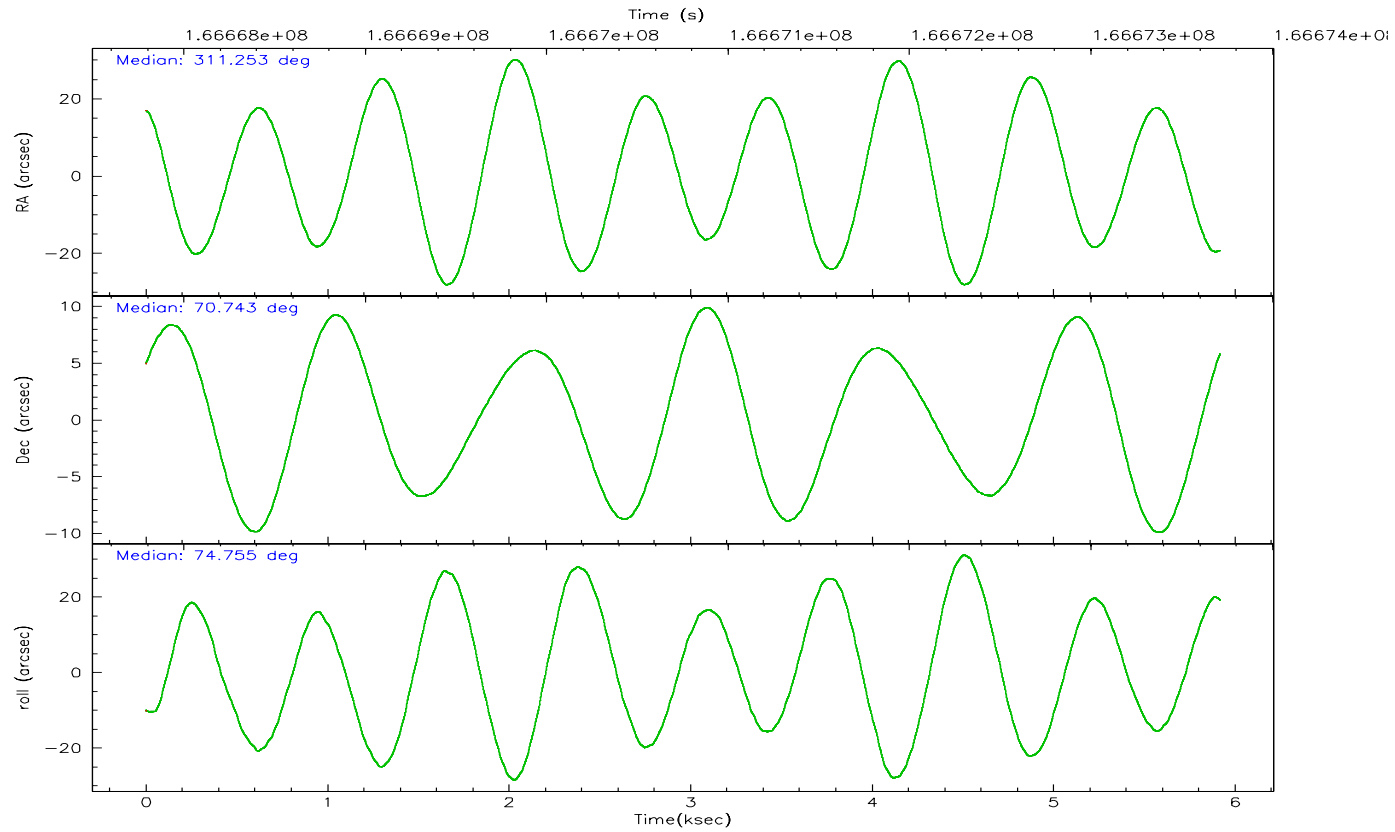
	ccd 2	ccd 3	ccd 5	ccd 6	ccd 7	ccd 8
grade 0 events	1515	1634	2709	1403	887	2643
	4%	5%	5%	4%	2%	6%
grade 1 events	19	17	51	11	24	30
	0%	0%	0%	0%	0%	0%
grade 2 events	729	714	6258	748	3858	1680
	2%	2%	13%	2%	9%	4%
grade 3 events	349	348	435	381	824	815
	1%	1%	0%	1%	2%	2%
grade 4 events	328	346	441	357	713	819
	1%	1%	0%	1%	1%	2%
grade 5 events	1212	1411	2183	1409	2768	1804
	3%	4%	4%	4%	6%	4%
grade 6 events	589	610	11217	669	9185	2042
	1%	2%	23%	2%	22%	5%
grade 7 events	27201	25070	23661	25841	22516	28064
	85%	83%	50%	83%	55%	74%

## 2.2 Compared Parameters

Parameter	Planned	Actual	Parameter	Planned	Actual
Instrument	ACIS	ACIS	Obspar format version number	6	6
Detector	ACIS-235678	ACIS-235678	Obspar file type	PREDICTED	ACTUAL
Grating	NONE	NONE	Obspar update status	NONE	UPDATED
Data mode	FAINT	FAINT	On-chip summing requested	N	N
Observation mode	POINTING	POINTING	Subarray requested	NONE	NONE
Pointing RA	311.275467	311.2532394475037	Alternating exposures requested	N	N
Pointing Dec	70.716888	70.74310266980596	Primary exposure time	0.000000	3.2
Pointing Roll	74.581772	74.75937202699441			
SIM focus pos (mm)	-0.684267	-0.6828225247311905			
SIM defocus (mm)	0	0.001444936568705701			
SIM translation stage pos (mm)	-190.132523	-190.1400660498719			
SIM translation stage offset (mm)	0	0.00754346686406393			
Observation start time	166668611.184000	166667336.00383			
Observation start date	2003-04-14T00:49:07	2003-04-14T00:28:56			
Observation end time	166673711.184000	166674489.99163			
Observation end date	2003-04-14T02:14:07	2003-04-14T02:28:09			
Read mode	TIMED	TIMED			

2.3 Aspect





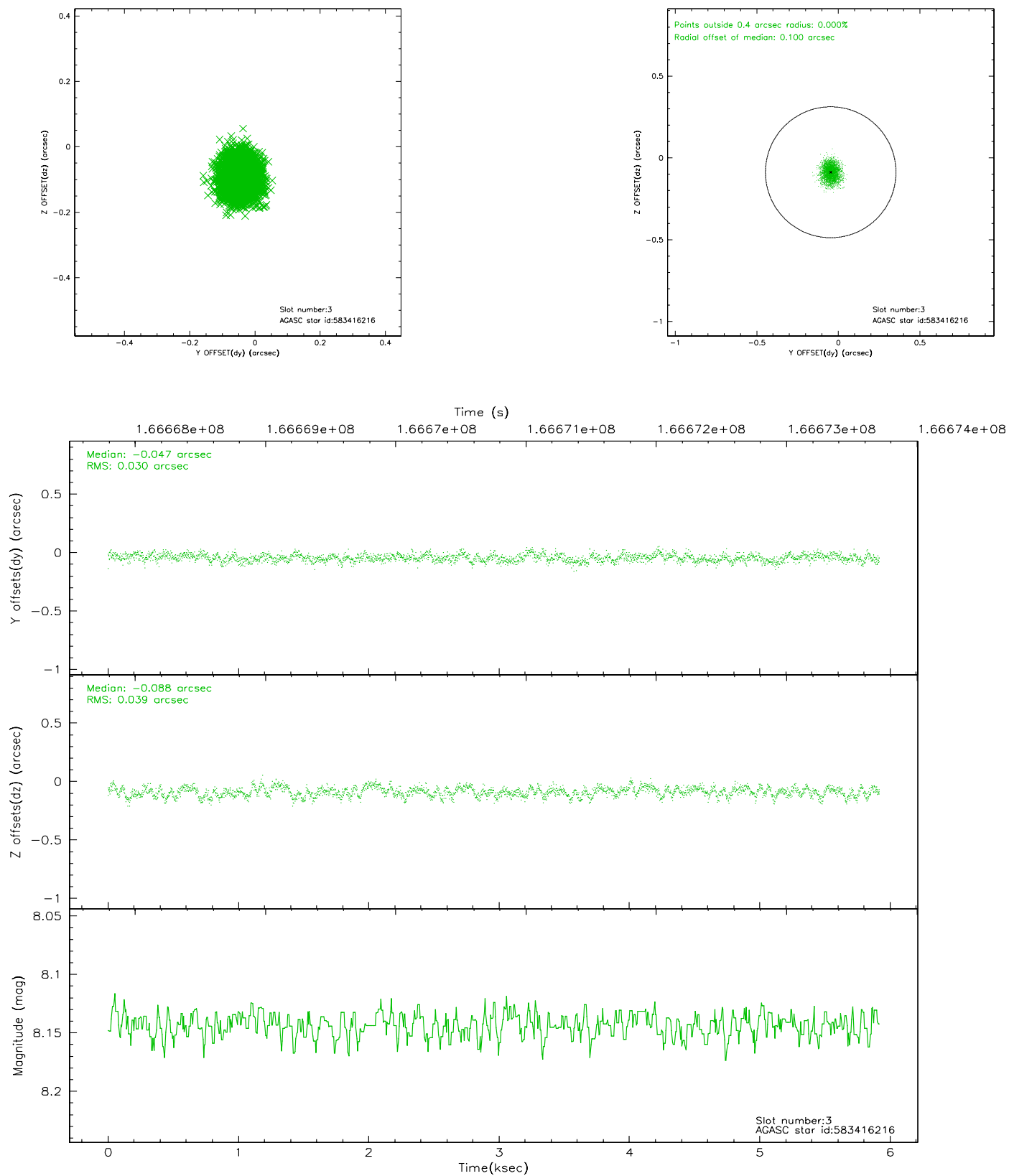
### Slot Statistics

slot	status	id	mag	n_pts	med_dy	med_dz	dr1	dr2	ra	dec	mean_y	mean_z
0	FID	ACIS-S-1	7.19	1443	0.019	0.046	0.007	0.011	0.000000	0.000000	941.11	-1725.51
1	FID	ACIS-S-4	7.20	1443	-0.071	-0.037	0.005	0.009	0.000000	0.000000	2159.00	177.52
2	FID	ACIS-S-5	7.24	1443	0.025	0.003	0.006	0.009	0.000000	0.000000	-1806.45	172.31
3	GUIDE	583416216	8.14	2886	-0.047	-0.088	0.053	0.085	311.039238	70.909039	593.64	452.08
4	GUIDE	585114048	7.93	2886	-0.026	0.039	0.063	0.106	312.198935	70.722795	320.84	-1050.03
5	GUIDE	585126256	9.98	2884	0.070	0.094	0.113	0.189	312.345364	70.278330	-1164.76	-1670.08
6	GUIDE	583409224	9.93	2884	-0.091	-0.123	0.126	0.198	309.667164	71.054621	696.04	2141.10
7	GUIDE	583935128	9.63	2884	0.098	0.080	0.104	0.172	309.719422	71.408471	1947.95	2390.53

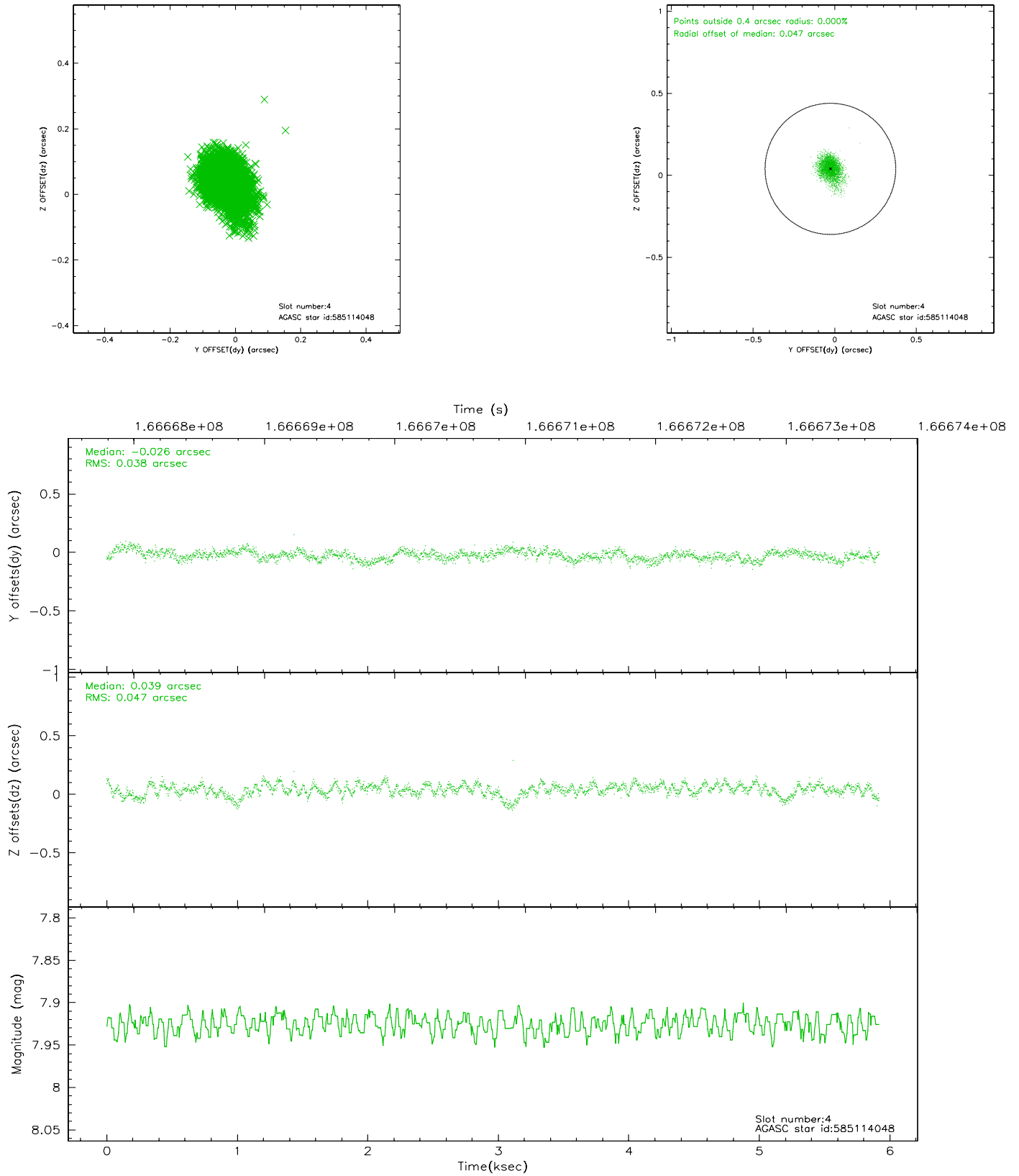


## 2.4 Star Slots

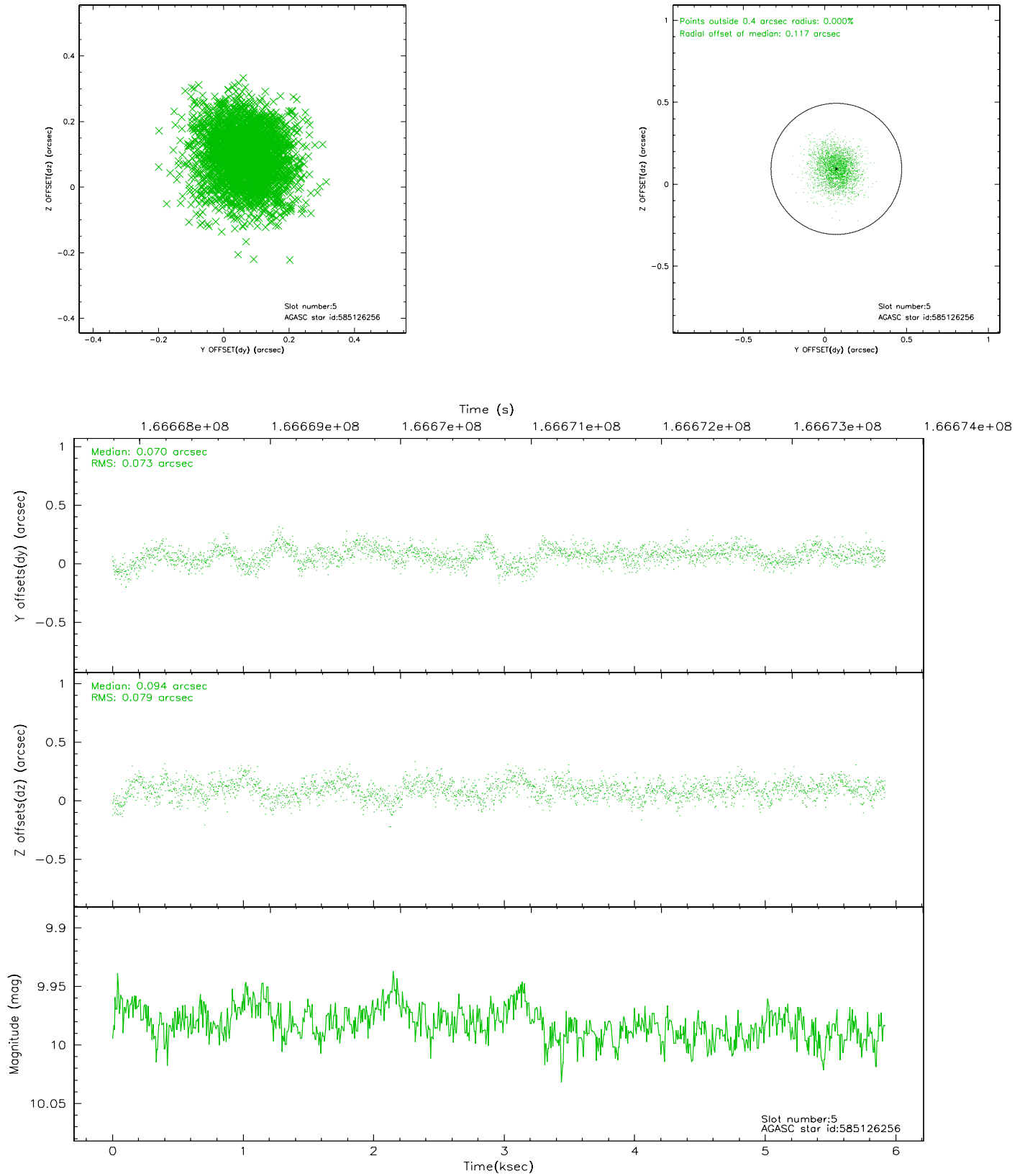
### 2.4.1 Slot 3



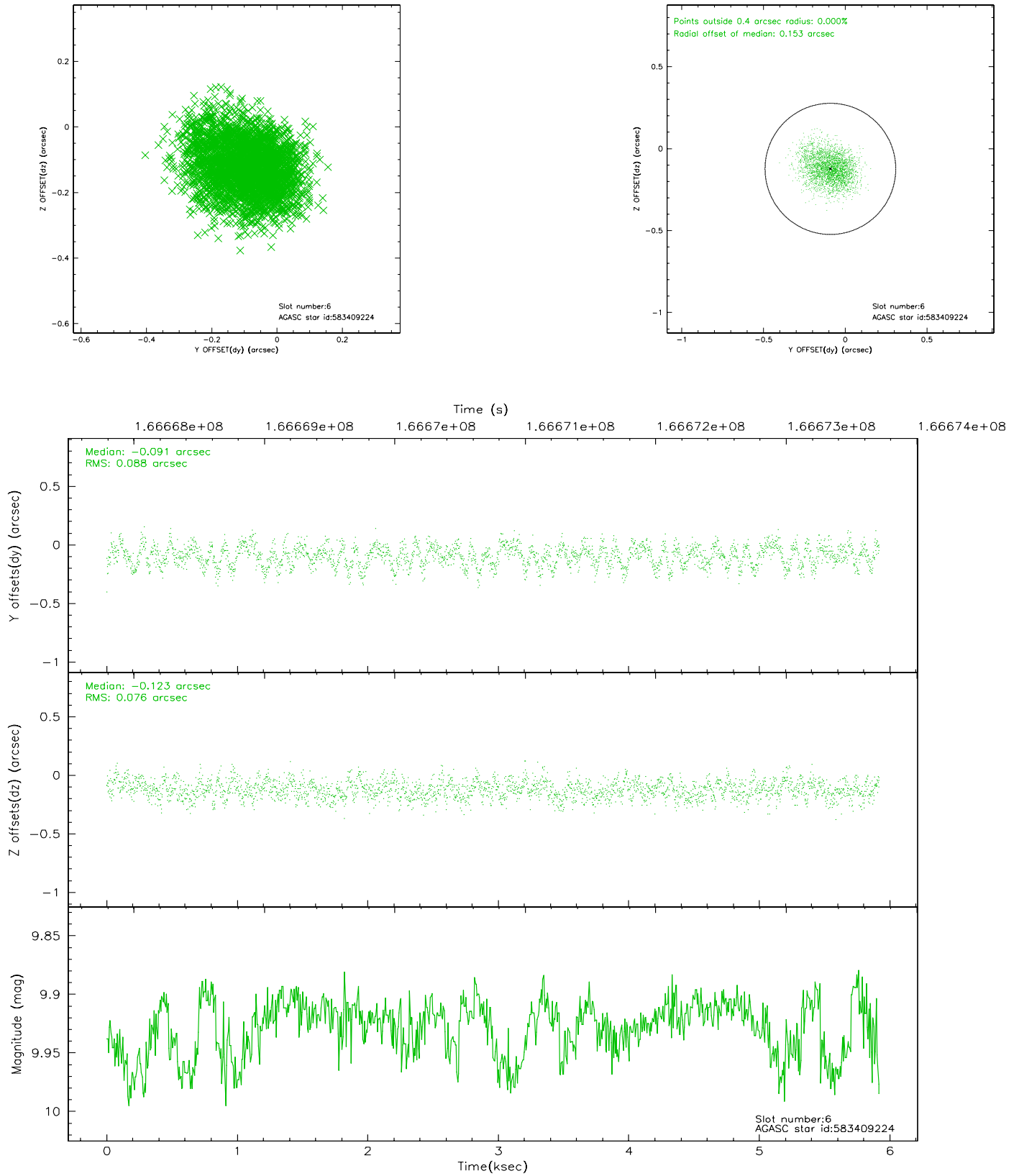
## 2.4.2 Slot 4



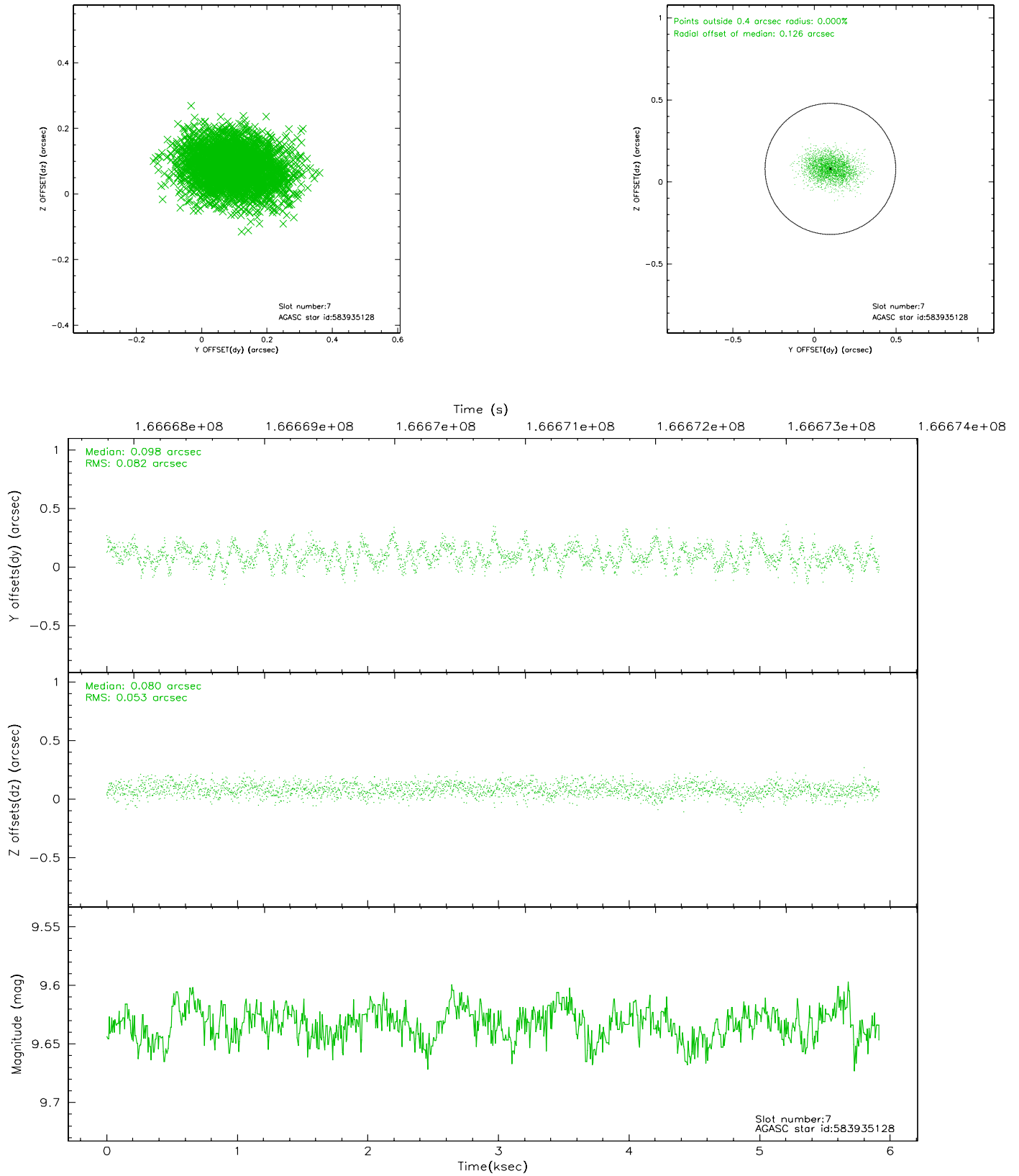
### 2.4.3 Slot 5



## 2.4.4 Slot 6

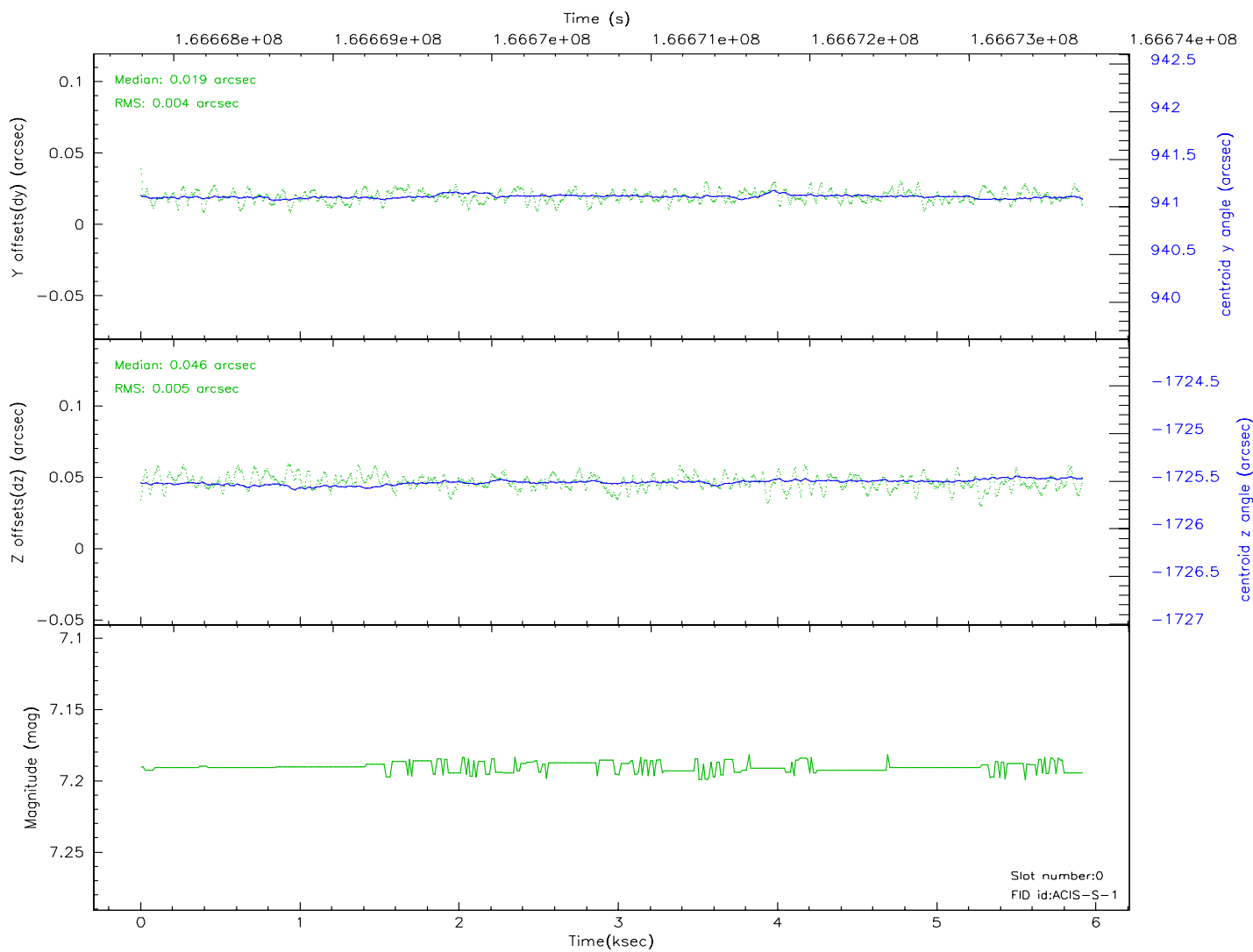
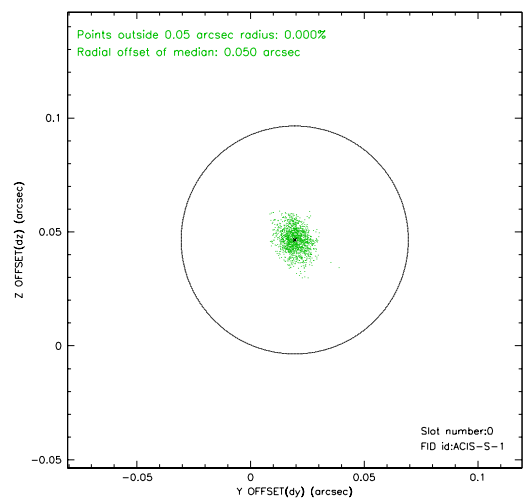
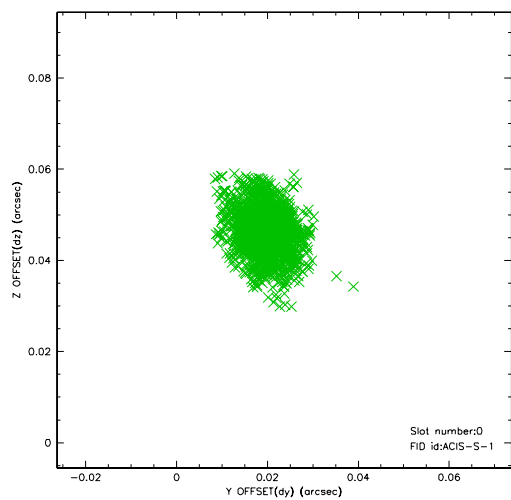


## 2.4.5 Slot 7

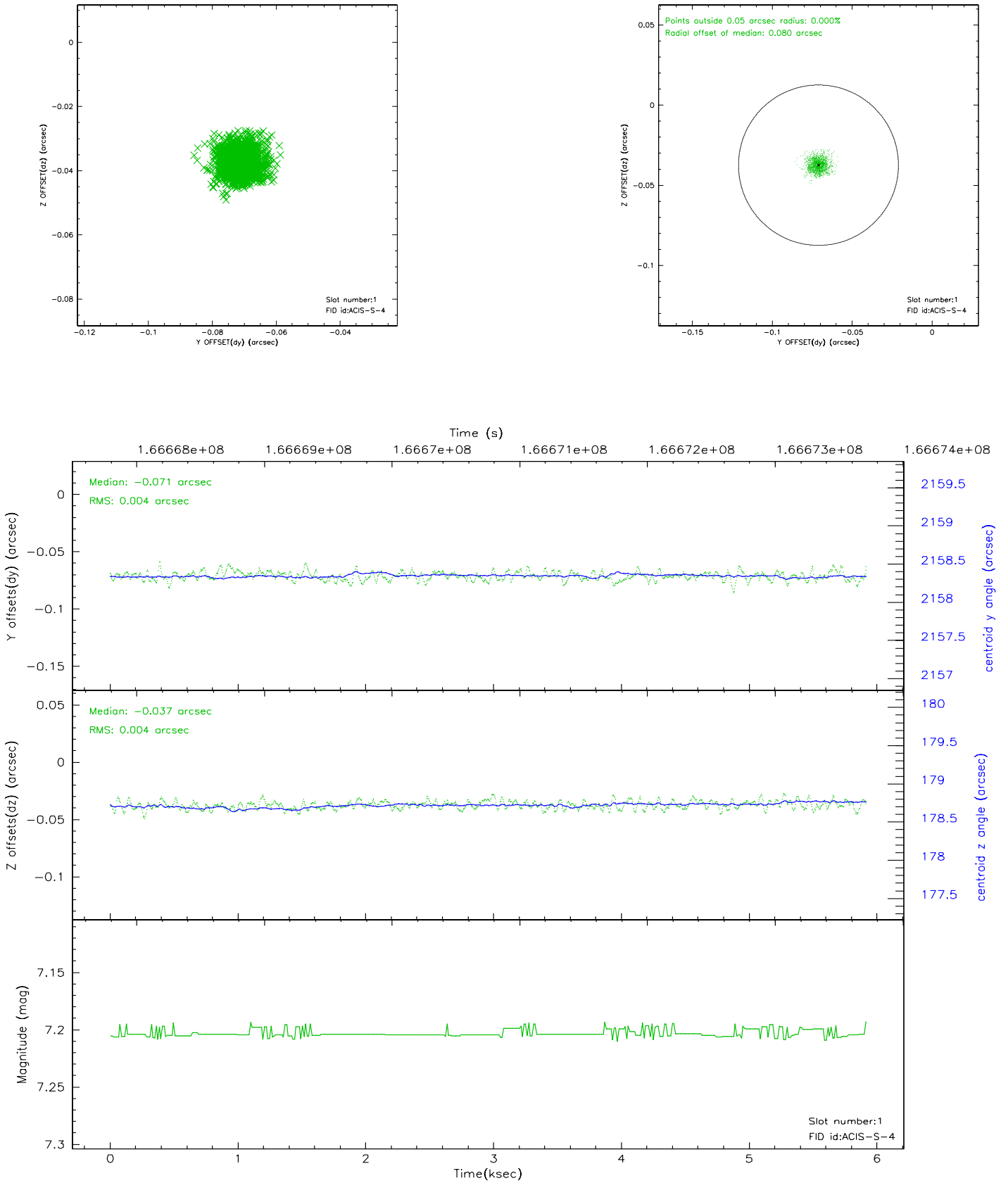


## 2.5 FID Slots

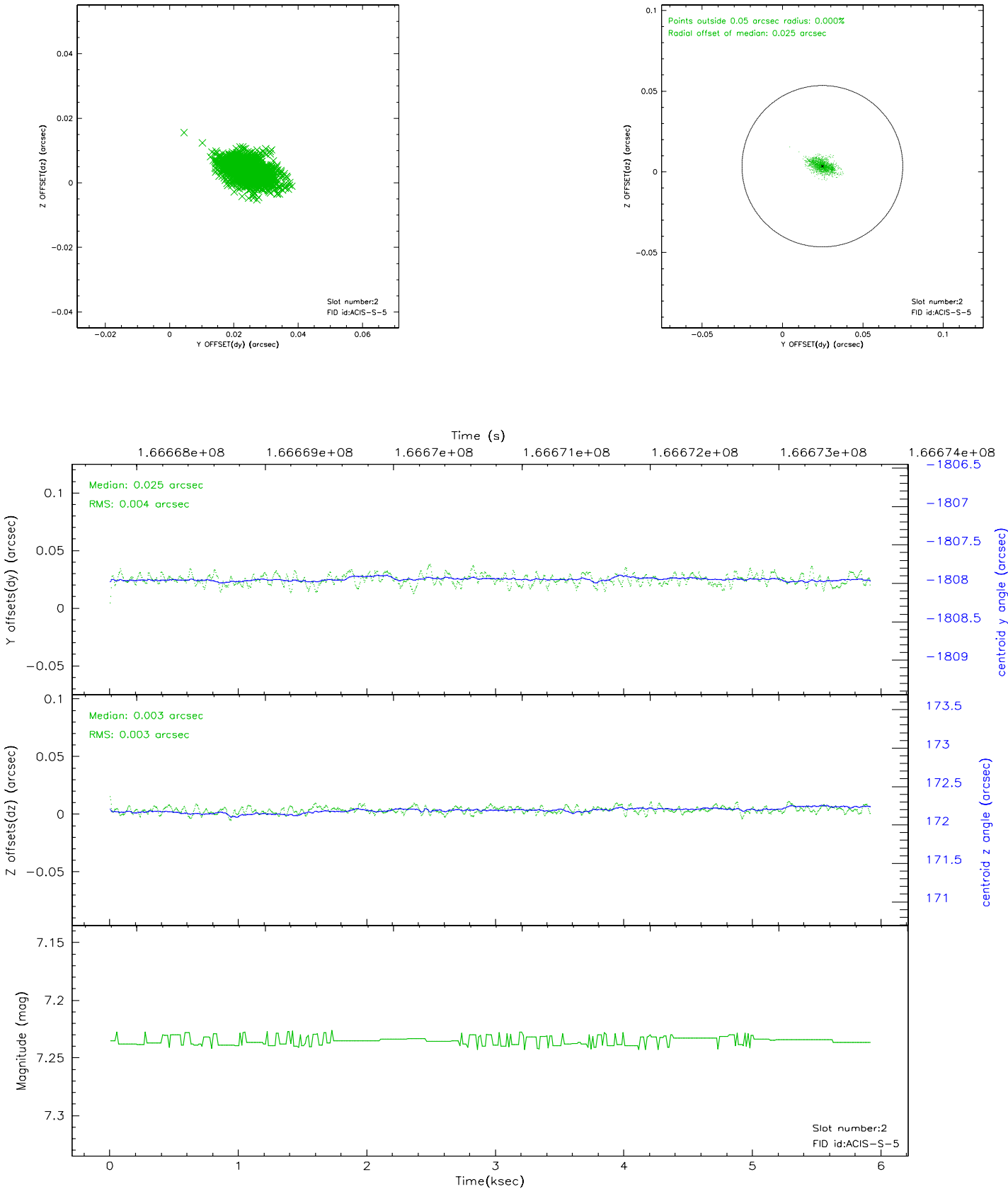
### 2.5.1 Slot 0



## 2.5.2 Slot 1

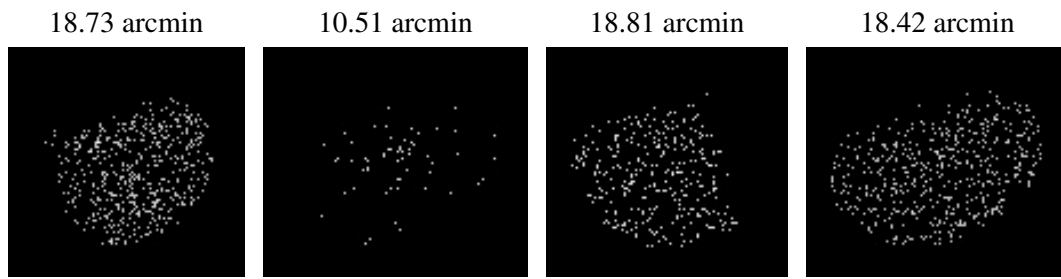


2.5.3 Slot 2





### 3 Point Sources



## A Summary

### A.1 Status

V&V Scientist	Beth Sundheim
V&V Date (YYYY-MM-DD)	2006.08.04
V&V Edition	1
V&V Disposition and Status	OK
V&V Charge Time	5.062

### A.2 Comments