

# V&V Reference Report

## L2 ASCDS Version : 7.6.8.1

Observation 4064 - L2 Version 001  
Chandra X-Ray Center

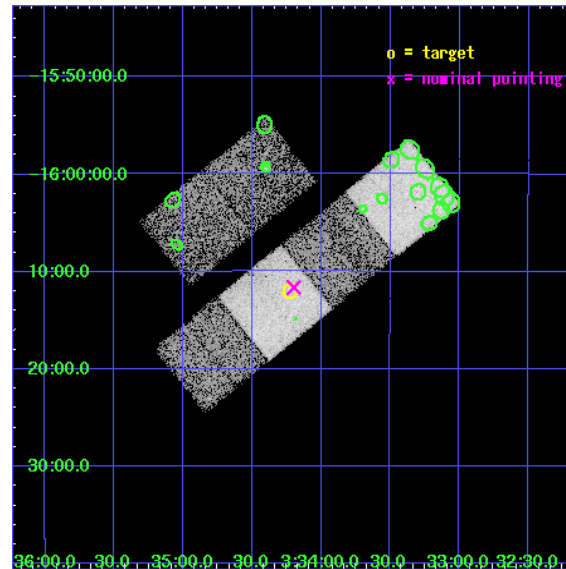
L2 Processing Date : Aug 7 2006

## Contents

<b>1</b>	<b>Front</b>	<b>2</b>
<b>2</b>	<b>OBI</b>	<b>3</b>
2.1	OBI . . . . .	3
2.1.1	Images . . . . .	3
2.1.2	Bias . . . . .	3
2.1.3	Parameters . . . . .	4
2.1.4	Events . . . . .	4
2.2	Compared Parameters . . . . .	5
2.3	Aspect . . . . .	6
2.4	Star Slots . . . . .	9
2.4.1	Slot 3 . . . . .	9
2.4.2	Slot 4 . . . . .	10
2.4.3	Slot 5 . . . . .	11
2.4.4	Slot 6 . . . . .	12
2.4.5	Slot 7 . . . . .	13
2.5	FID Slots . . . . .	14
2.5.1	Slot 0 . . . . .	14
2.5.2	Slot 1 . . . . .	15
2.5.3	Slot 2 . . . . .	16
<b>3</b>	<b>Point Sources</b>	<b>17</b>
<b>A</b>	<b>Summary</b>	<b>18</b>
A.1	Status . . . . .	18
A.2	Comments . . . . .	18

# 1 Front

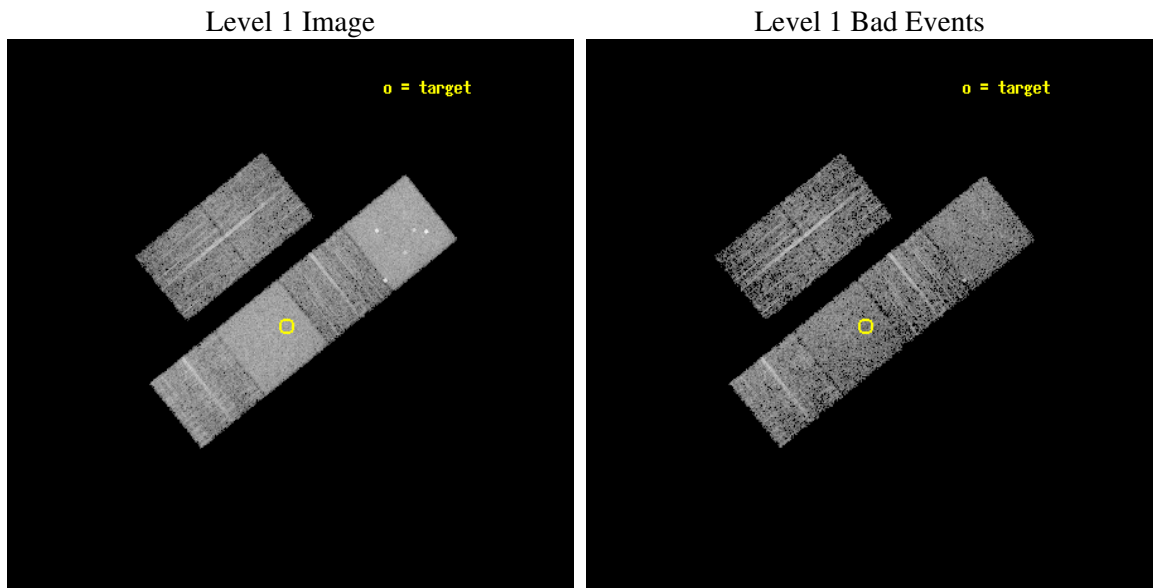
seq_num	700743
obs_id	4064
title	A CHANDRA SURVEY OF THE MOST LUMINOUS QUASARS AT $Z > 4$
observer	Dr. Cristian Vignali
object	BR 0331-1622
dtcycle	0
cycle	P
ra_targ	53.555833
dec_targ	-16.201333
ra_nom	53.549297552068
dec_nom	-16.194073738687
roll_nom	141.10191122043
revision	2
ontime	4729.5999823809
livetime	4669.7109395808
ontime2	4726.3590221107
ontime3	4729.5999823809
ontime5	4729.5999823809
ontime6	4726.358992219
ontime7	4729.5999823809
ontime8	4726.3590120971
l2events	87203



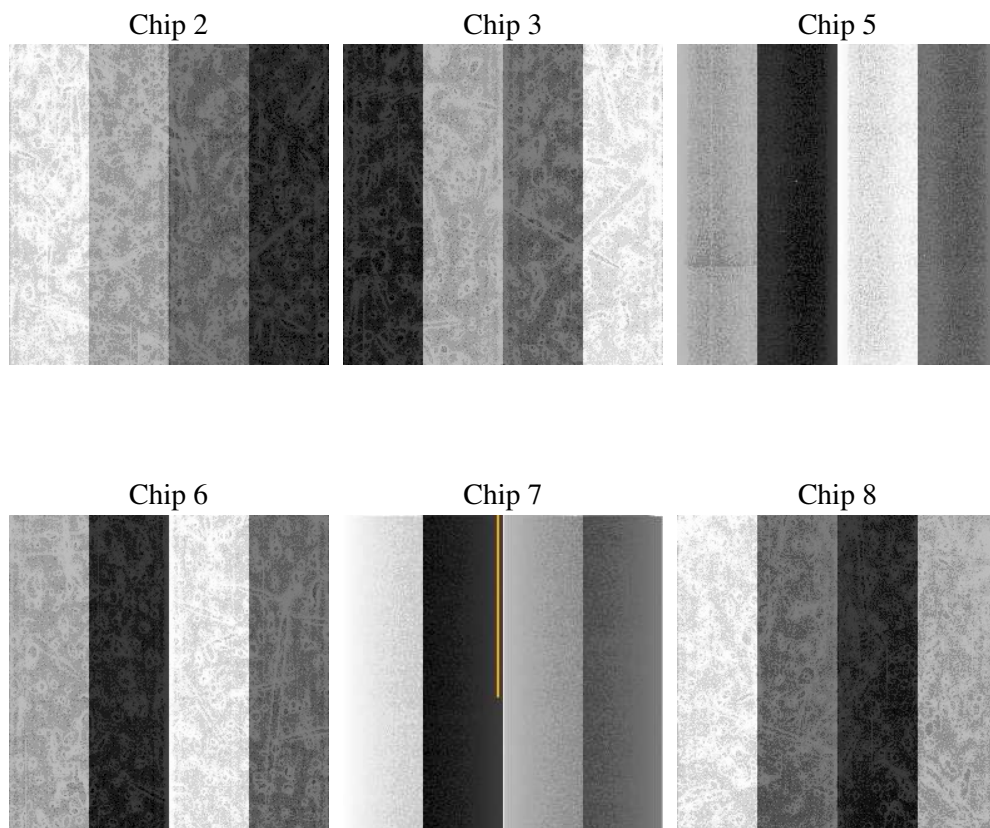
## 2 OBI

### 2.1 OBI

#### 2.1.1 Images



#### 2.1.2 Bias



### 2.1.3 Parameters

obi_num	0
ascdsver	7.6.8.1
caldsver	3.2.2
date	2006-08-07T03:09:33
revision	2

sched_exp_time	4976.000000
ontime	4735.1001710594
ontime2	4731.8592107892
ontime3	4735.1001710594
ontime5	4735.1001909971
ontime6	4731.8591808975
ontime7	4735.1001710594
ontime8	4731.8591011167
l1events	255778

### 2.1.4 Events

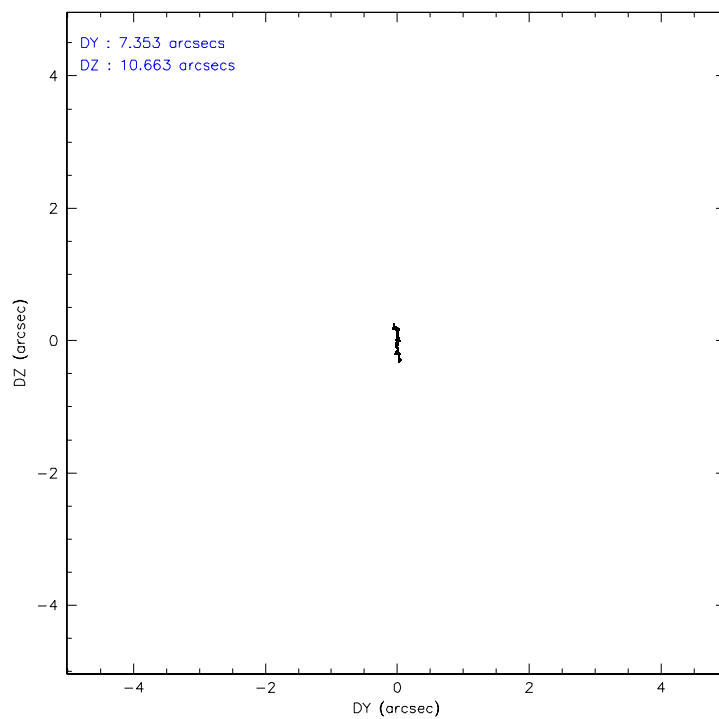
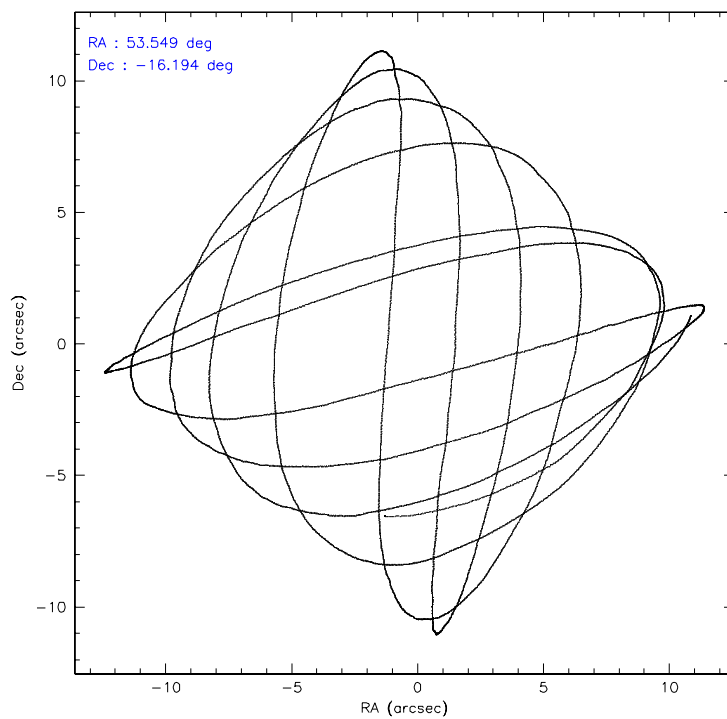
	ccd 2	ccd 3	ccd 5	ccd 6	ccd 7	ccd 8
level 1 events	30688	28805	63733	33525	56999	42028
rejected events	25295	23710	26411	27070	25364	30956
rejected %	82%	82%	41%	80%	44%	73%

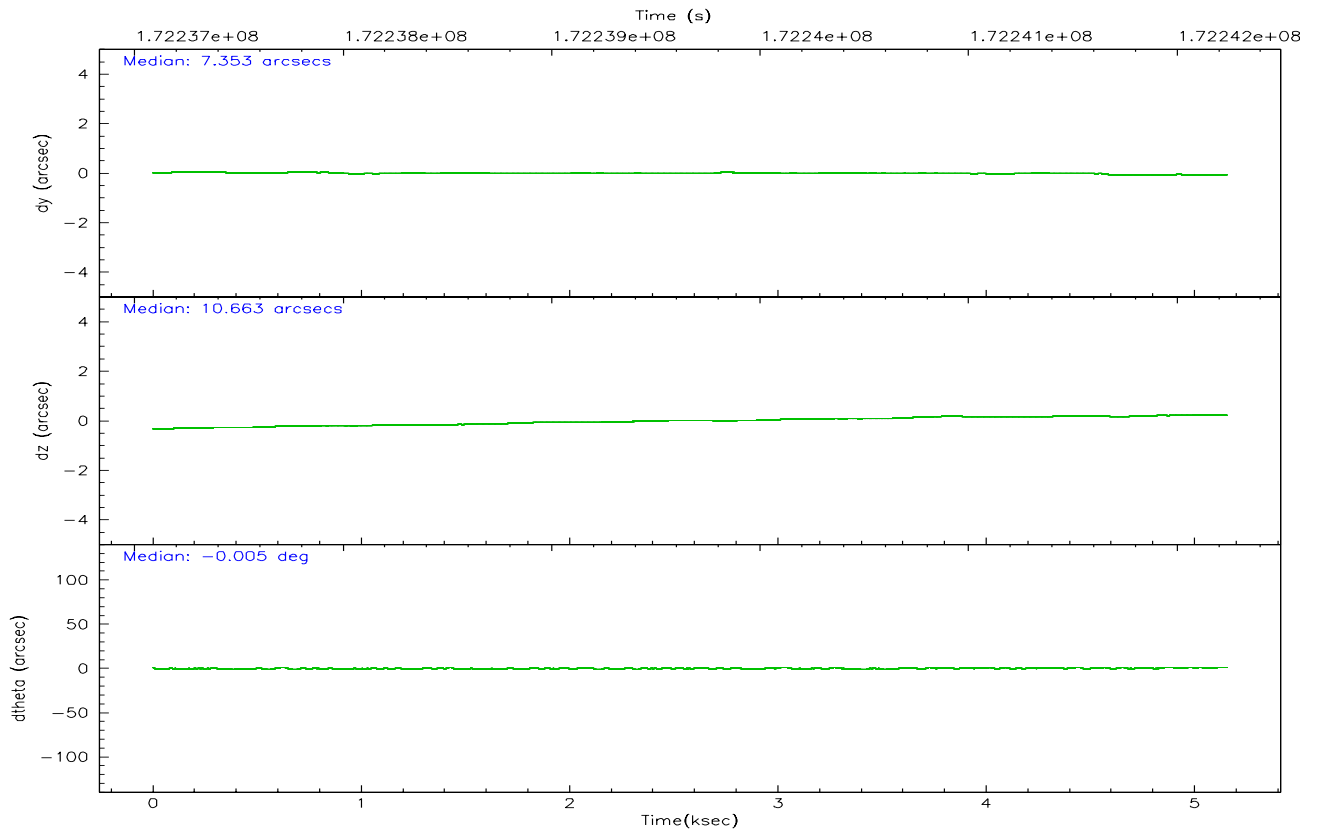
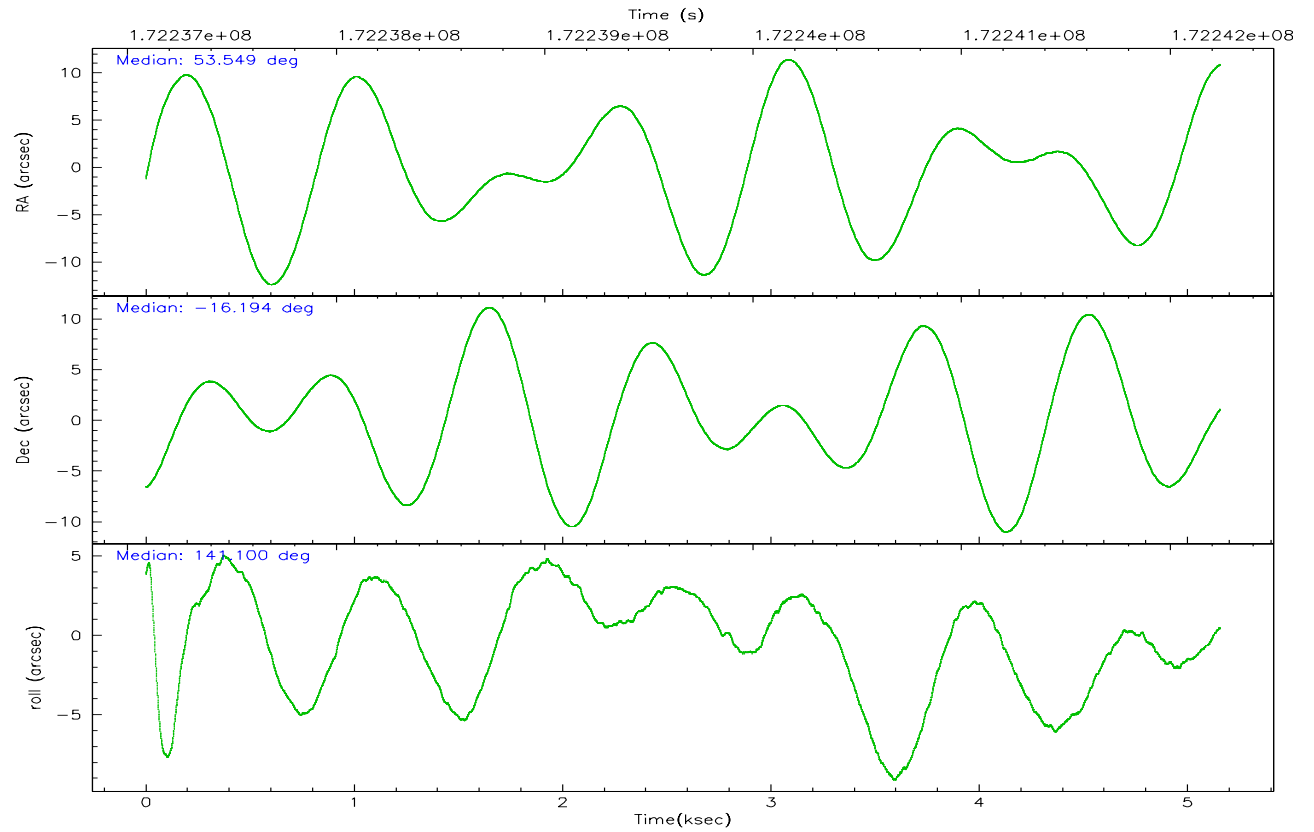
	ccd 2	ccd 3	ccd 5	ccd 6	ccd 7	ccd 8
grade 0 events	3058	2895	4919	3751	2660	5074
	9%	10%	7%	11%	4%	12%
grade 1 events	31	29	155	17	40	28
	0%	0%	0%	0%	0%	0%
grade 2 events	959	885	11535	1164	6936	2056
	3%	3%	18%	3%	12%	4%
grade 3 events	384	370	1146	393	1799	938
	1%	1%	1%	1%	3%	2%
grade 4 events	382	334	1163	383	1746	919
	1%	1%	1%	1%	3%	2%
grade 5 events	1142	1204	2269	1310	2658	1654
	3%	4%	3%	3%	4%	3%
grade 6 events	614	615	18583	772	18522	2100
	2%	2%	29%	2%	32%	4%
grade 7 events	24118	22473	23963	25735	22638	29259
	78%	78%	37%	76%	39%	69%

## 2.2 Compared Parameters

Parameter	Planned	Actual	Parameter	Planned	Actual
Instrument	ACIS	ACIS	Obspar format version number	6	6
Detector	ACIS-235678	ACIS-235678	Obspar file type	PREDICTED	ACTUAL
Grating	NONE	NONE	Obspar update status	NONE	UPDATED
Data mode	FAINT	FAINT	On-chip summing requested	N	N
Observation mode	POINTING	POINTING	Subarray requested	NONE	NONE
Pointing RA	53.577295	53.54929755206787	Alternating exposures requested	N	N
Pointing Dec	-16.197882	-16.19407373868687	Primary exposure time	0.000000	3.2
Pointing Roll	140.953066	141.1019112204332			
SIM focus pos (mm)	-0.684267	-0.6828225247311905			
SIM defocus (mm)	0	0.001444936568705701			
SIM translation stage pos (mm)	-190.132523	-190.1400660498719			
SIM translation stage offset (mm)	0	0.00754346686406393			
Observation start time	172237270.184000	172236629.15222			
Observation start date	2003-06-17T11:40:06	2003-06-17T11:30:29			
Observation end time	172242246.184000	172242785.81498			
Observation end date	2003-06-17T13:03:02	2003-06-17T13:13:05			
Read mode	TIMED	TIMED			

## 2.3 Aspect





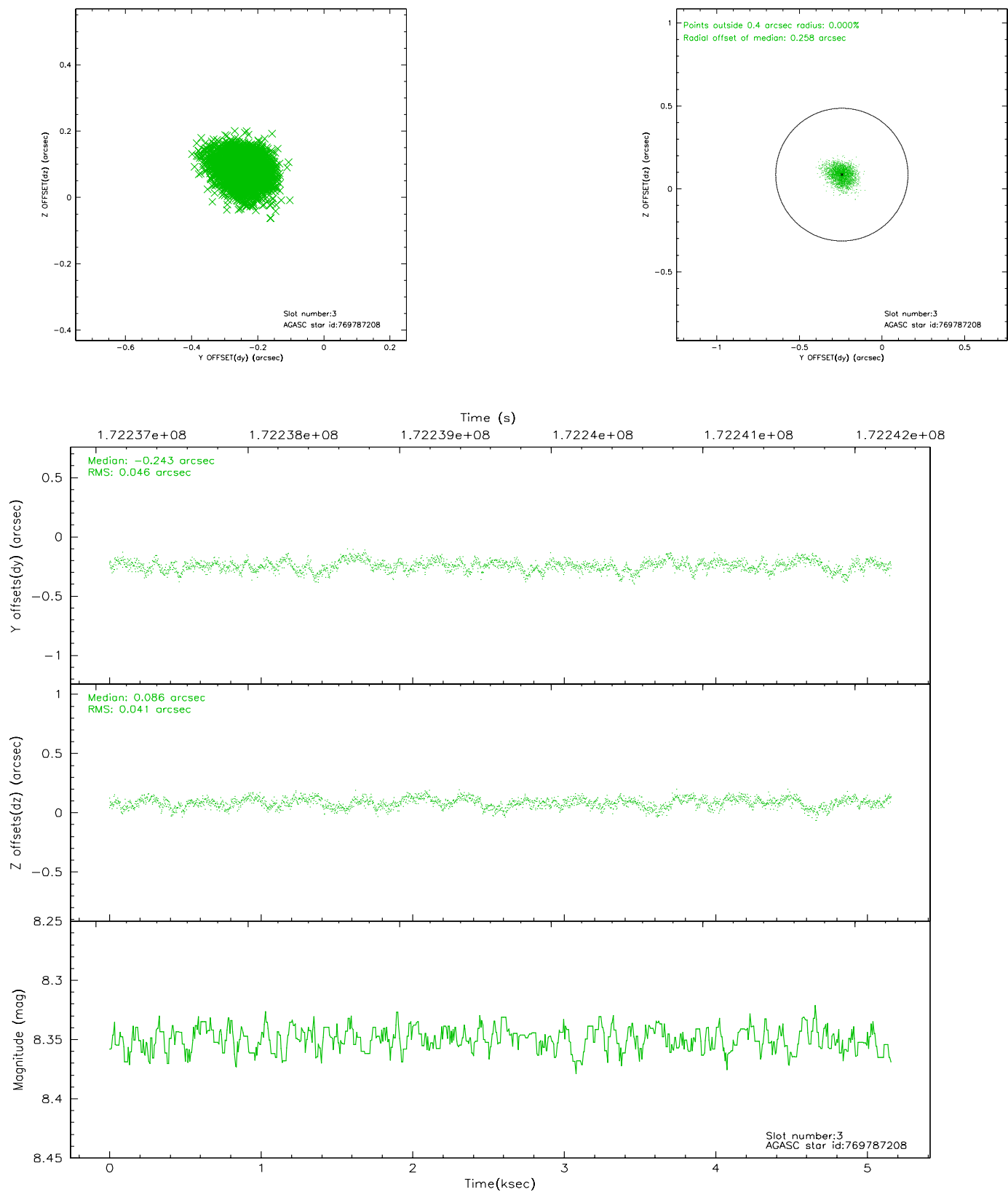
### Slot Statistics

slot	status	id	mag	n_pts	med_dy	med_dz	dr1	dr2	ra	dec	mean_y	mean_z
0	FID	ACIS-S-2	7.35	1258	-0.027	0.015	0.006	0.011	0.000000	0.000000	-760.10	-1731.92
1	FID	ACIS-S-4	7.21	1258	0.002	0.009	0.005	0.010	0.000000	0.000000	2152.63	175.40
2	FID	ACIS-S-5	7.23	1258	-0.006	-0.016	0.006	0.010	0.000000	0.000000	-1811.45	170.31
3	GUIDE	769787208	8.35	2517	-0.243	0.086	0.065	0.106	53.303878	-15.548215	2209.89	-1218.17
4	GUIDE	769917744	10.00	2515	0.037	-0.078	0.126	0.213	53.603600	-15.606723	1270.88	-1710.73
5	GUIDE	769919616	9.50	2511	-0.016	-0.095	0.082	0.132	53.522177	-15.829784	984.19	-909.32
6	GUIDE	769920224	8.83	2513	0.052	0.029	0.070	0.117	53.734932	-16.068446	-129.01	-705.34
7	GUIDE	769918192	10.44	2516	0.168	0.058	0.165	0.275	54.475223	-16.141626	-2287.46	-2108.20

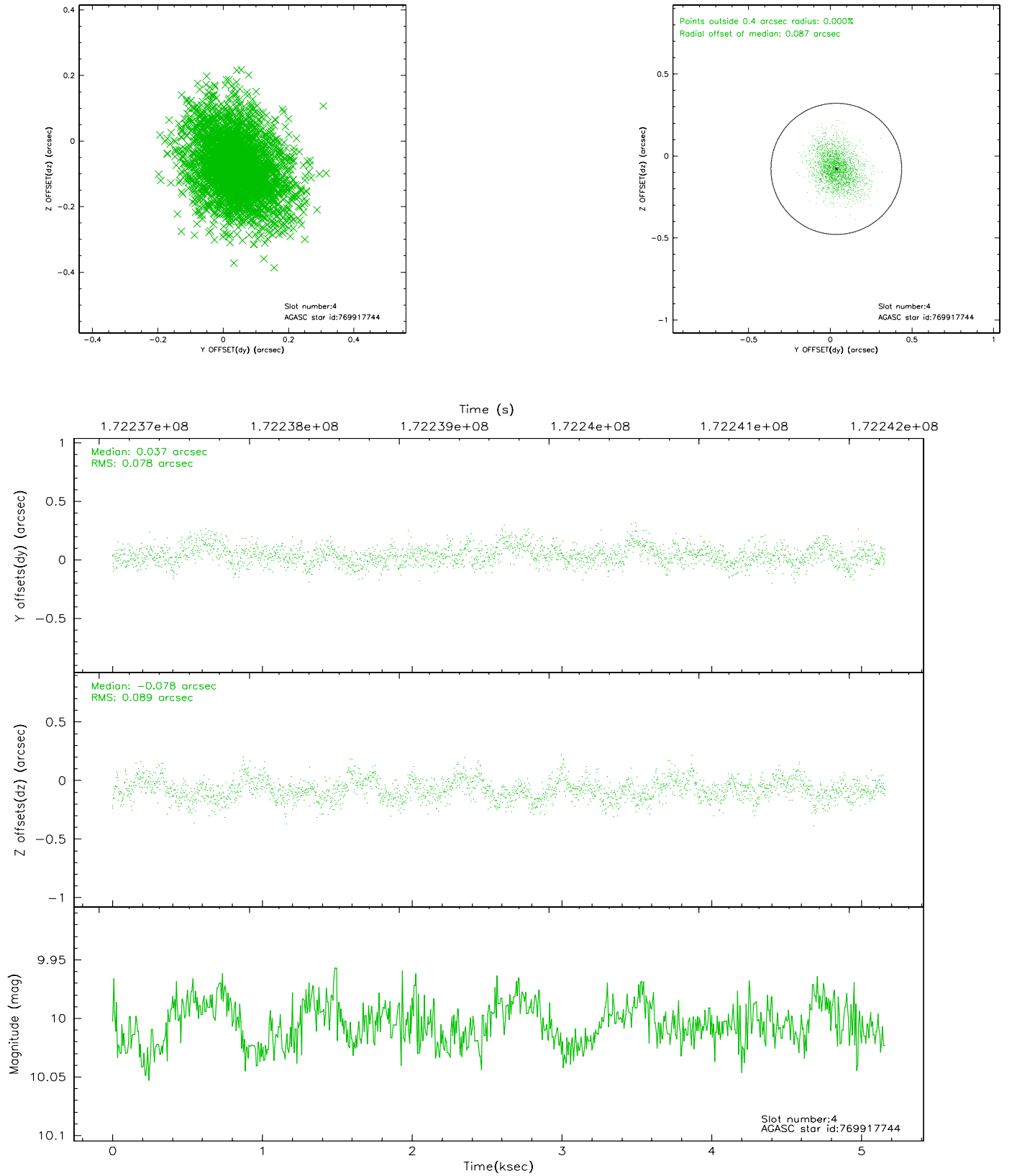


## 2.4 Star Slots

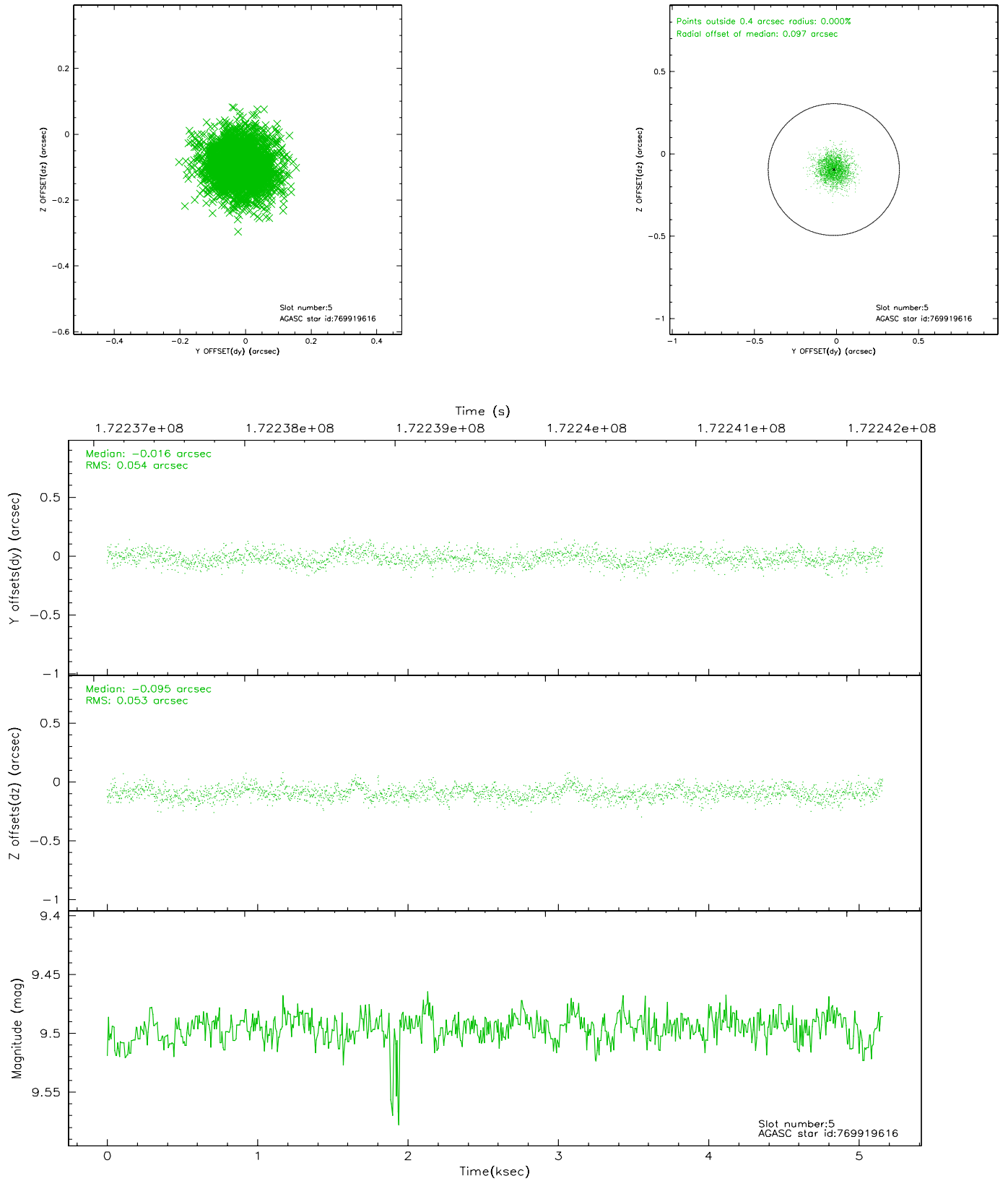
### 2.4.1 Slot 3



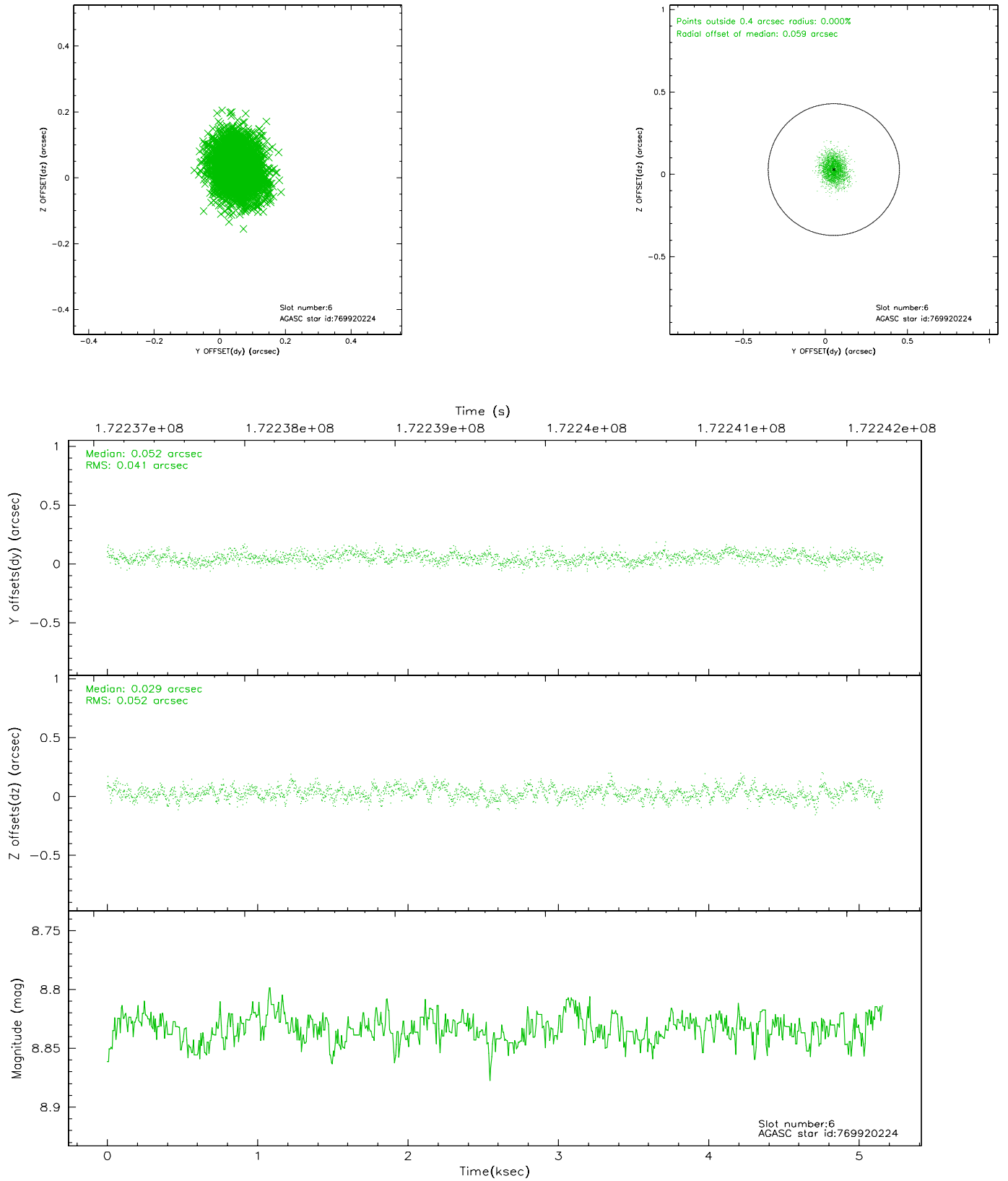
## 2.4.2 Slot 4



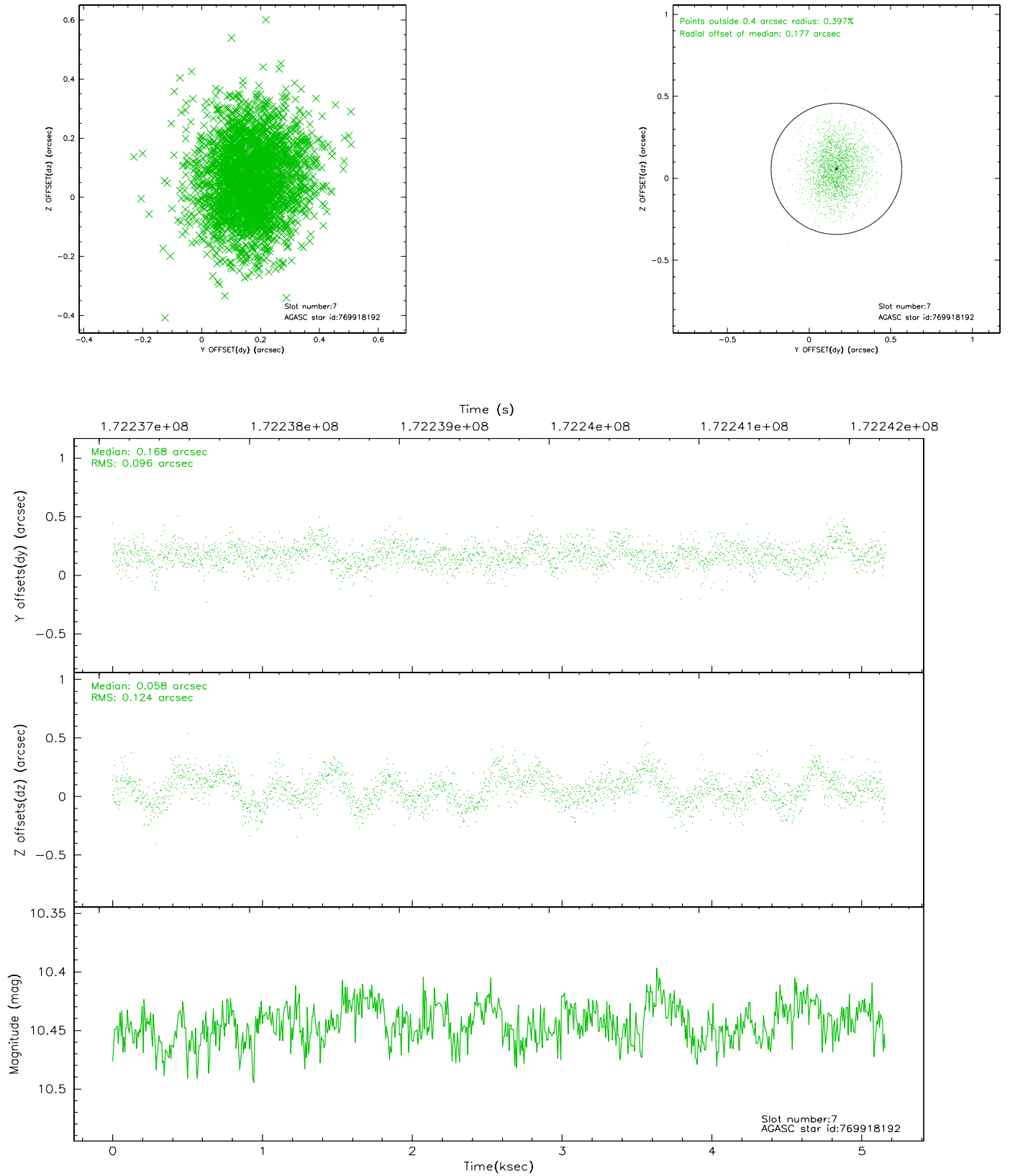
### 2.4.3 Slot 5



## 2.4.4 Slot 6

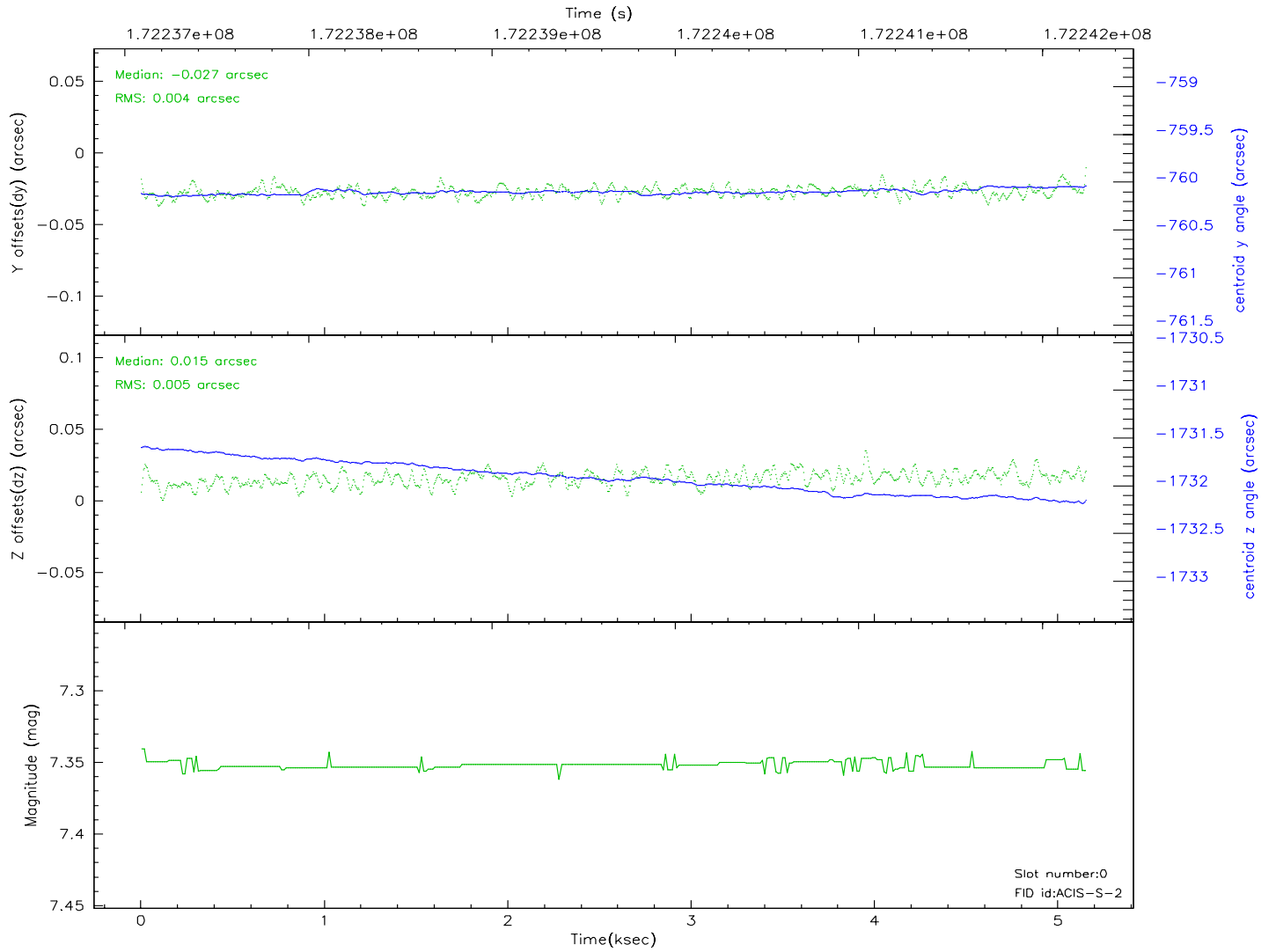
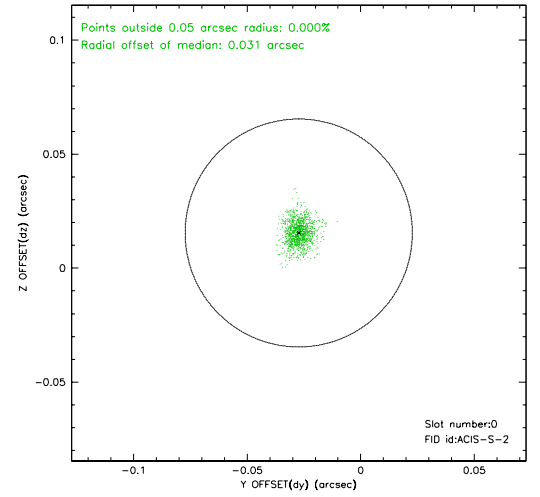
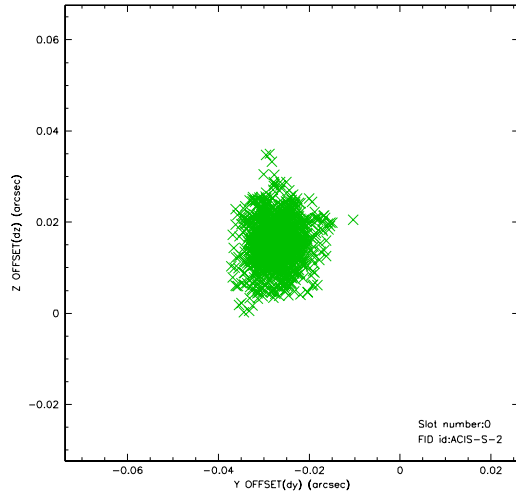


## 2.4.5 Slot 7

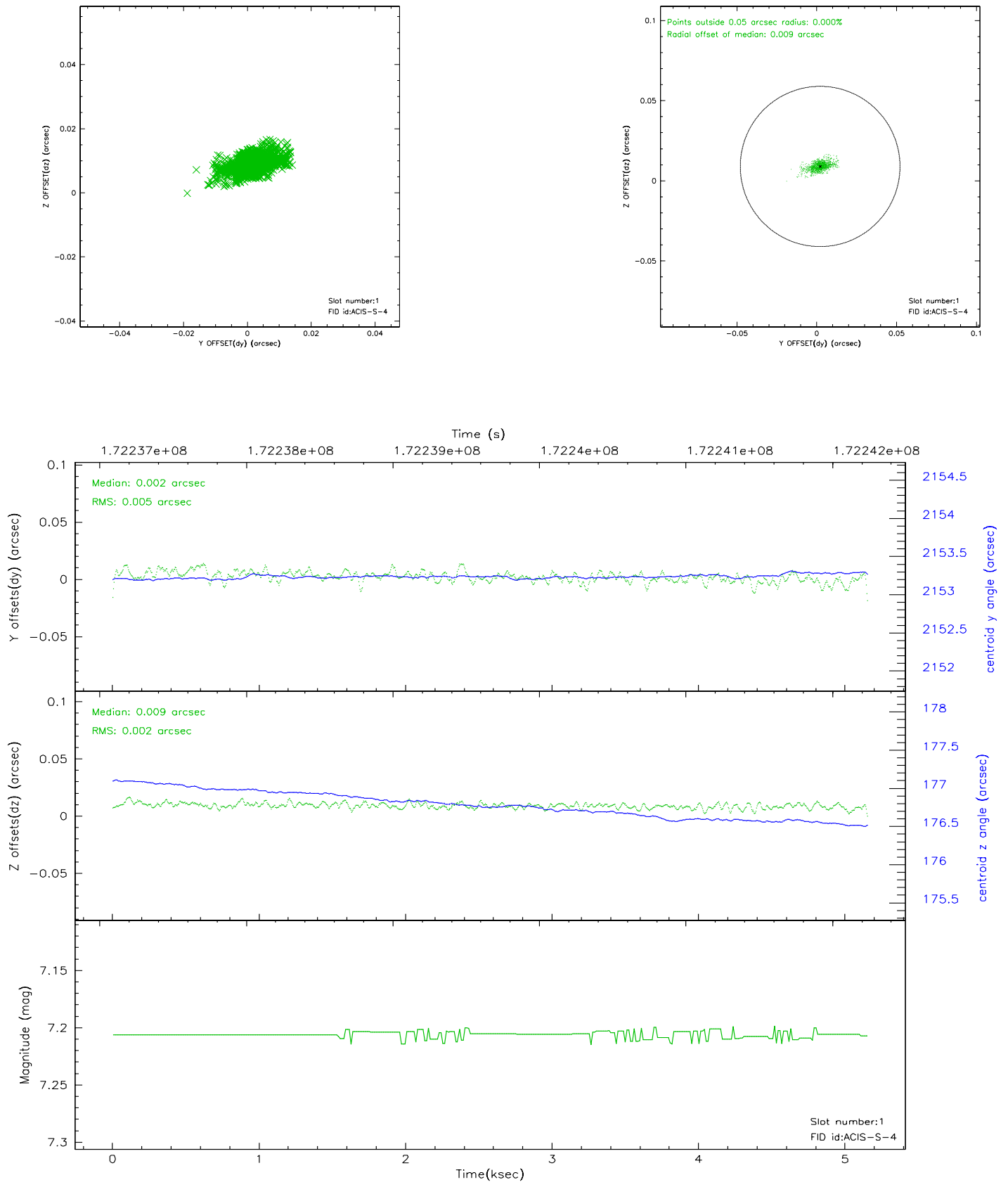


## 2.5 FID Slots

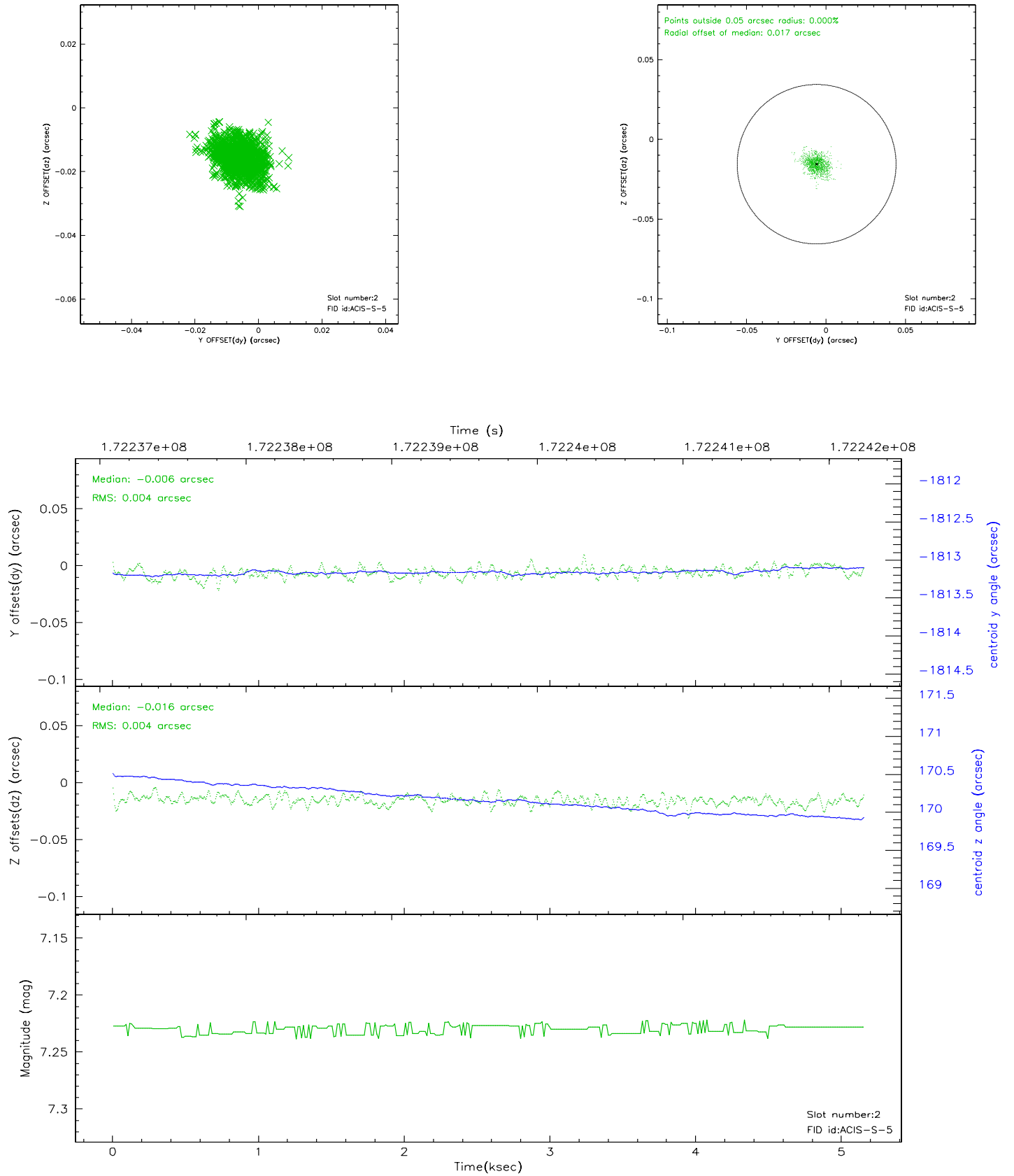
### 2.5.1 Slot 0



## 2.5.2 Slot 1

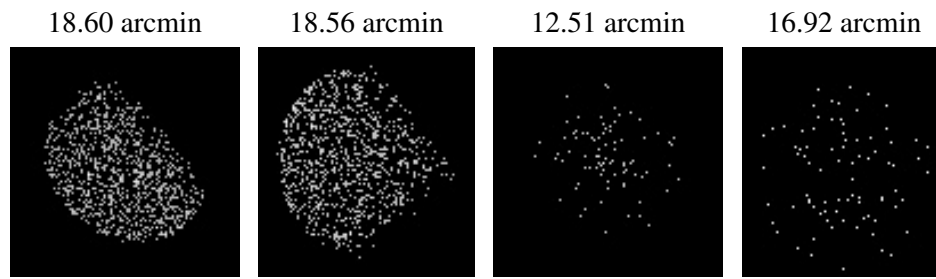


### 2.5.3 Slot 2





### 3 Point Sources



## A Summary

### A.1 Status

V&V Scientist	Beth Sundheim
V&V Date (YYYY-MM-DD)	2006.08.07
V&V Edition	1
V&V Disposition and Status	OK
V&V Charge Time	4.732

### A.2 Comments