

V&V Reference Report

L2 ASCDS Version : 8.1.1

Observation 394 - L2 Version 4

Chandra X-Ray Center

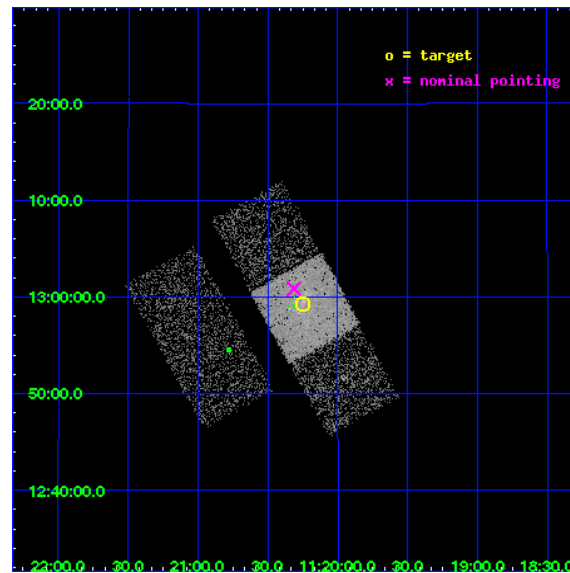
L2 Processing Date : Nov 21 2009

Contents

1	Front	2
2	OBI	3
2.1	OBI	3
2.1.1	Images	3
2.1.2	Bias	3
2.1.3	Parameters	4
2.1.4	Events	4
2.2	Compared Parameters	5
2.3	Aspect	6
2.4	Star Slots	9
2.4.1	Slot 3	9
2.4.2	Slot 4	10
2.4.3	Slot 5	11
2.4.4	Slot 6	12
2.4.5	Slot 7	13
2.5	FID Slots	14
2.5.1	Slot 0	14
2.5.2	Slot 1	15
2.5.3	Slot 2	16
3	Point Sources	17
A	Summary	18
A.1	Status	18
A.2	Comments	18

1 Front

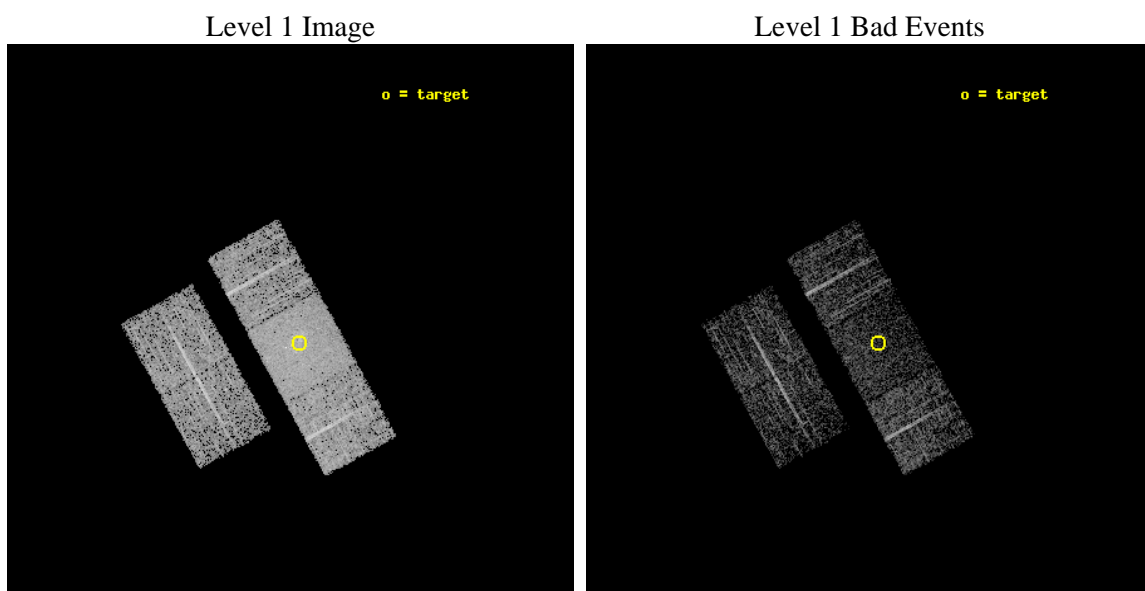
seq_num	700066	Sequence number
obs_id	394	Observation id
title	LOW-LUMINOSITY ACTIVE GALACTIC NUCLEI IN NEARBY GALAXIES	Proposal
observer	Prof Gordon Garmire	Principal investigator
object	NGC 3627	Source name
dtcycle	0	
cycle	P	events from which exps? Prim/Second/Both
ra_targ	170.062083	Observer's specified target RA
dec_targ	12.989167	Observer's specified target Dec
ra_nom	170.07854911927	Nominal RA
dec_nom	13.014127083469	Nominal Dec
roll_nom	61.184754493374	Nominal Roll
revision	4	Processing version of data
ontime	1772.800001651	Sum of GTIs [s]
livetime	1750.3517405781	Livetime [s]
ontime2	1772.800001651	Sum of GTIs [s]
ontime3	1772.7933160961	Sum of GTIs [s]
ontime6	1772.800001651	Sum of GTIs [s]
ontime7	1772.800001651	Sum of GTIs [s]
ontime8	1772.7522960305	Sum of GTIs [s]
l2events	21677	Number of level 2 events



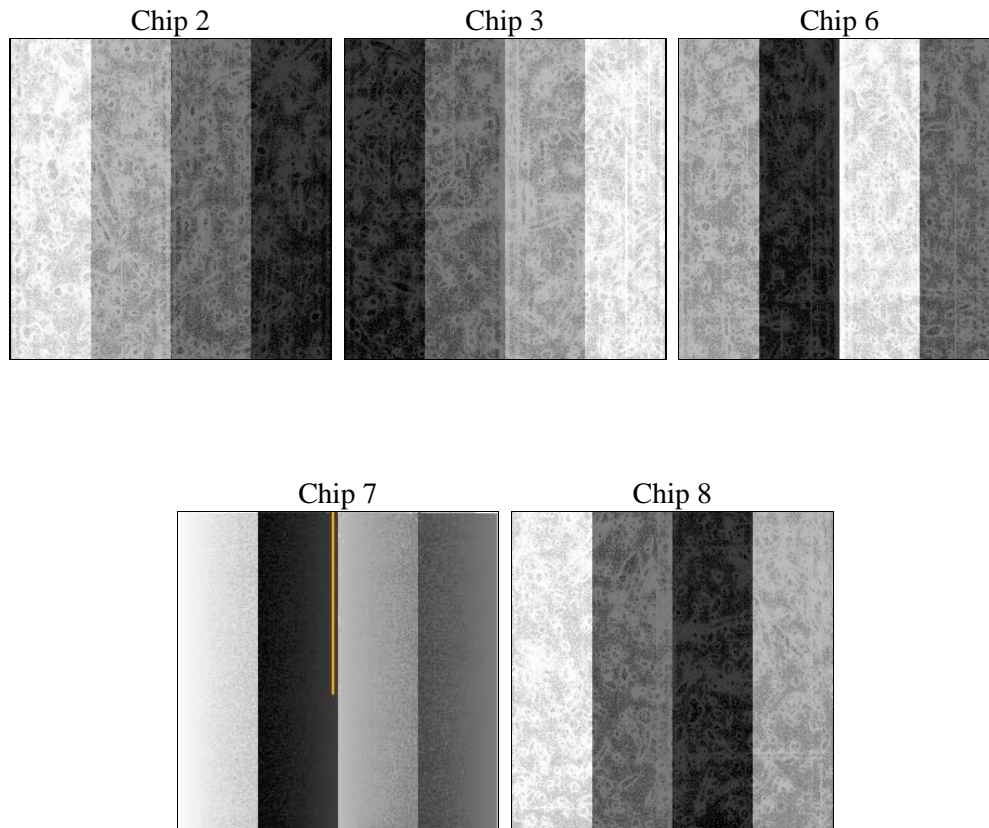
2 OBI

2.1 OBI

2.1.1 Images



2.1.2 Bias



2.1.3 Parameters

obi_num	1	Obi number	sched_exp_time	2000.000000	Scheduled observation exposure time
ascdsver	8.1.1	ASCDS version number	ontime	1772.800001651	Sum of GTIs [s]
caldsver	4.1.4	 	ontime2	1772.800001651	Sum of GTIs [s]
date	2009-11-21T09:44:37	Date and time of file creation	ontime3	1772.7933160961	Sum of GTIs [s]
revision	3	Processing version of data	ontime6	1772.800001651	Sum of GTIs [s]
			ontime7	1772.800001651	Sum of GTIs [s]
			ontime8	1772.7522960305	Sum of GTIs [s]
			l1events	99798	Number of level 1 events

2.1.4 Events

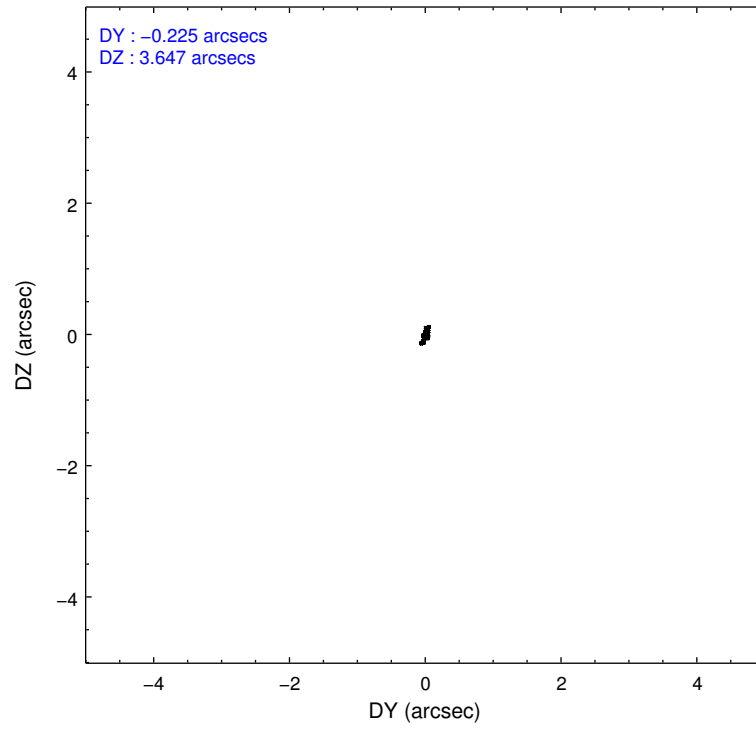
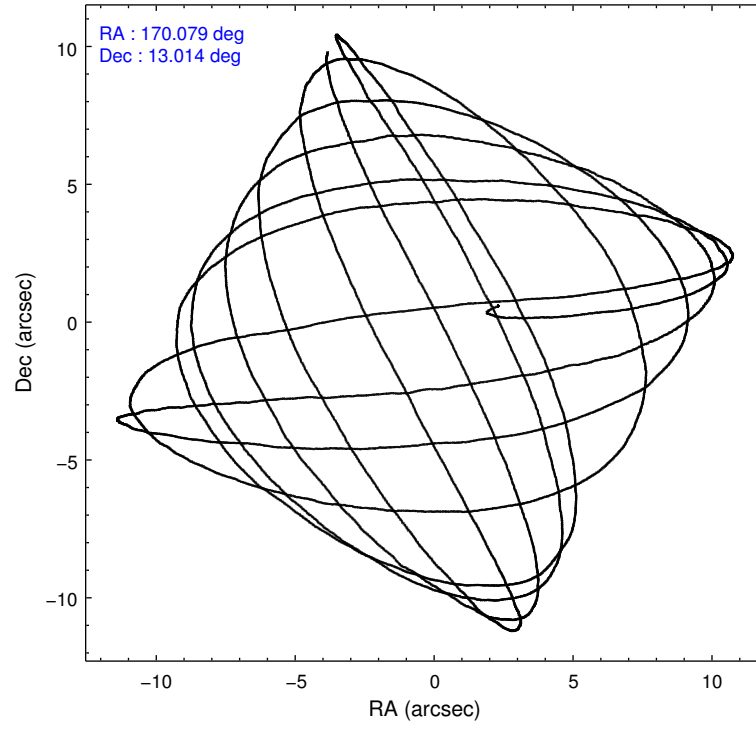
	ccd 2	ccd 3	ccd 6	ccd 7	ccd 8
level 1 events	17105	15679	17460	27162	22392
rejected events	15559	14135	15779	11452	19143
rejected %	90%	90%	90%	42%	85%

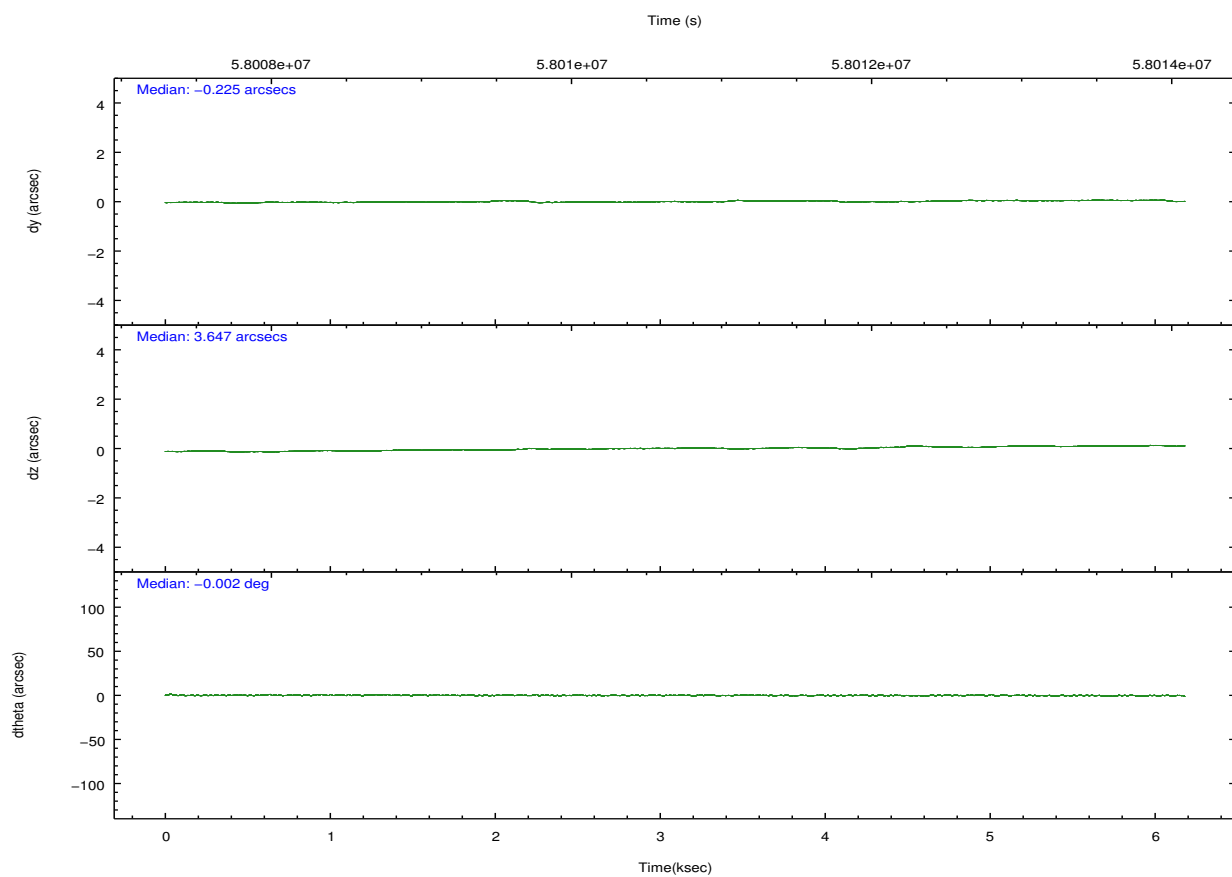
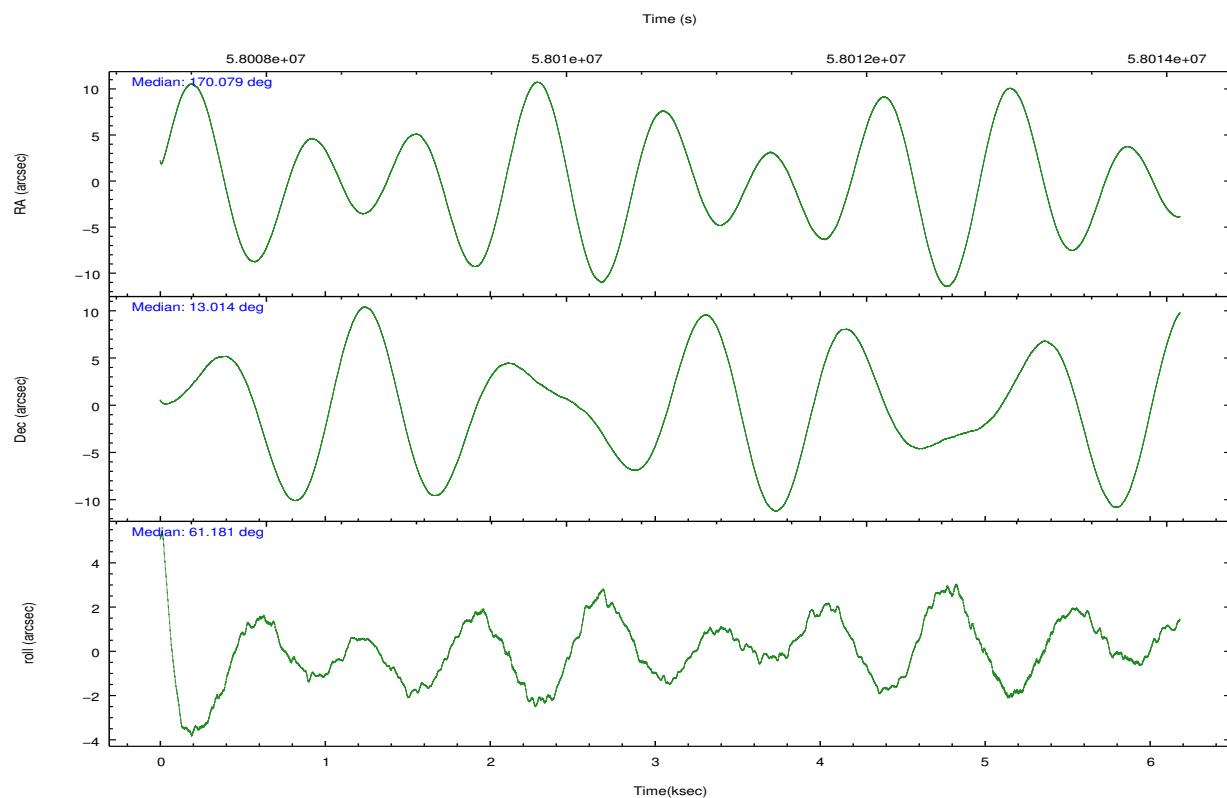
	ccd 2	ccd 3	ccd 6	ccd 7	ccd 8
grade 0 events	364	352	371	2129	719
	2%	2%	2%	7%	3%
grade 1 events	2	3	2	15	8
	0%	0%	0%	0%	0%
grade 2 events	629	639	723	3445	1026
	3%	4%	4%	12%	4%
grade 3 events	94	95	100	1211	285
	0%	0%	0%	4%	1%
grade 4 events	97	89	96	1073	257
	0%	0%	0%	3%	1%
grade 5 events	276	278	352	1120	422
	1%	1%	2%	4%	1%
grade 6 events	364	380	399	7916	980
	2%	2%	2%	29%	4%
grade 7 events	15279	13843	15417	10253	18695
	89%	88%	88%	37%	83%

2.2 Compared Parameters

Parameter	Planned	Actual	Parameter	Planned	Actual
Instrument	ACIS	ACIS	Obspar format version number	6	6
Detector	ACIS-23678	ACIS-23678	Obspar file type	PREDICTED	ACTUAL
Grating	NONE	NONE	Obspar update status	NONE	UPDATED
Data mode	FAINT	FAINT	Number of optional ACIS chips dropped	0	0
Observation mode	POINTING	POINTING	On-chip summing requested	N	N
Pointing RA	170.078966	170.0785491192735	Subarray requested	NONE	NONE
Pointing Dec	12.986537	13.0141270834686	Alternating exposures requested	N	N
Pointing Roll	61.028044	61.18475449337434	Primary exposure time	0.000000	3.2
SIM focus pos (mm)	-0.684267	-0.6828225247311905			
SIM defocus (mm)	0	0.001444936568705701			
SIM translation stage pos (mm)	-190.132523	-190.1400660498719			
SIM translation stage offset (mm)	0	0.00754346686406393			
Observation start time	58008079.184000	58007301.039698			
Observation start date	1999-11-03T09:20:15	1999-11-03T09:08:21			
Observation end time	58010079.184000	58014317.164952			
Observation end date	1999-11-03T09:53:35	1999-11-03T11:05:17			
Read mode	TIMED	TIMED			

2.3 Aspect



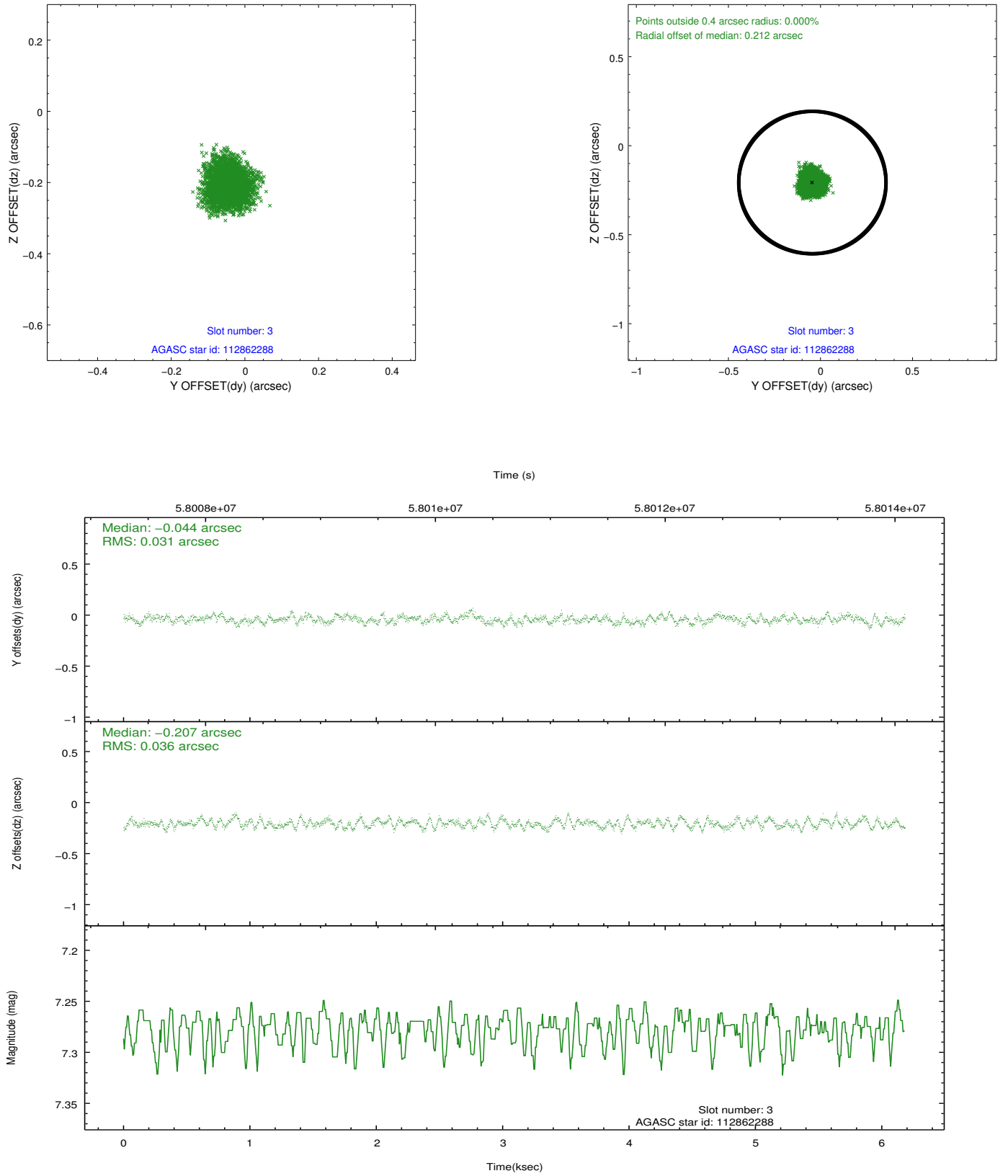


Slot Statistics

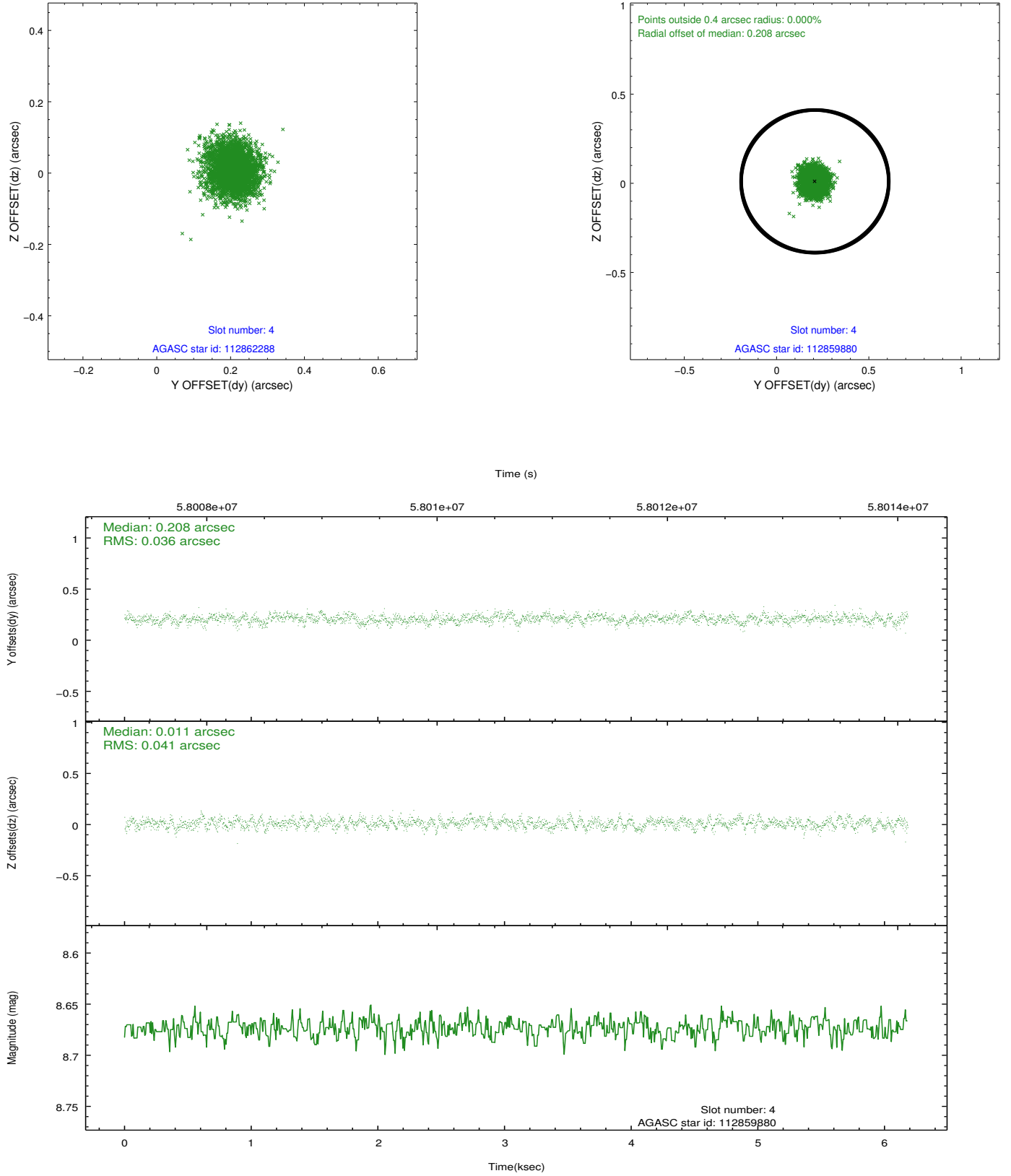
slot	status	id	mag	n_pts	med_dy	med_dz	dr1	dr2	ra	dec	mean_y	mean_z
0	FID	ACIS-S-2	7.11	3017	0.012	-0.011	0.006	0.011	0.000000	0.000000	-752.38	-1724.70
1	FID	ACIS-S-4	7.20	3017	0.039	-0.003	0.006	0.010	0.000000	0.000000	2160.81	183.28
2	FID	ACIS-S-5	7.24	3017	-0.083	0.023	0.006	0.010	0.000000	0.000000	-1804.74	177.57
3	GUIDE	112862288	7.28	3017	-0.044	-0.207	0.051	0.081	169.777560	13.390753	761.03	1629.30
4	GUIDE	112859880	8.67	3016	0.208	0.011	0.057	0.092	170.266867	12.557546	-1031.70	-1324.31
5	GUIDE	112862424	9.44	3016	-0.264	0.088	0.089	0.141	170.459633	13.475243	2183.83	-312.65
6	GUIDE	112857720	9.39	3017	-0.074	-0.151	0.087	0.135	169.841312	13.775016	2080.57	2102.85
7	GUIDE	112460312	9.80	3012	0.171	0.261	0.087	0.142	170.341830	12.224725	-1951.16	-2135.74

2.4 Star Slots

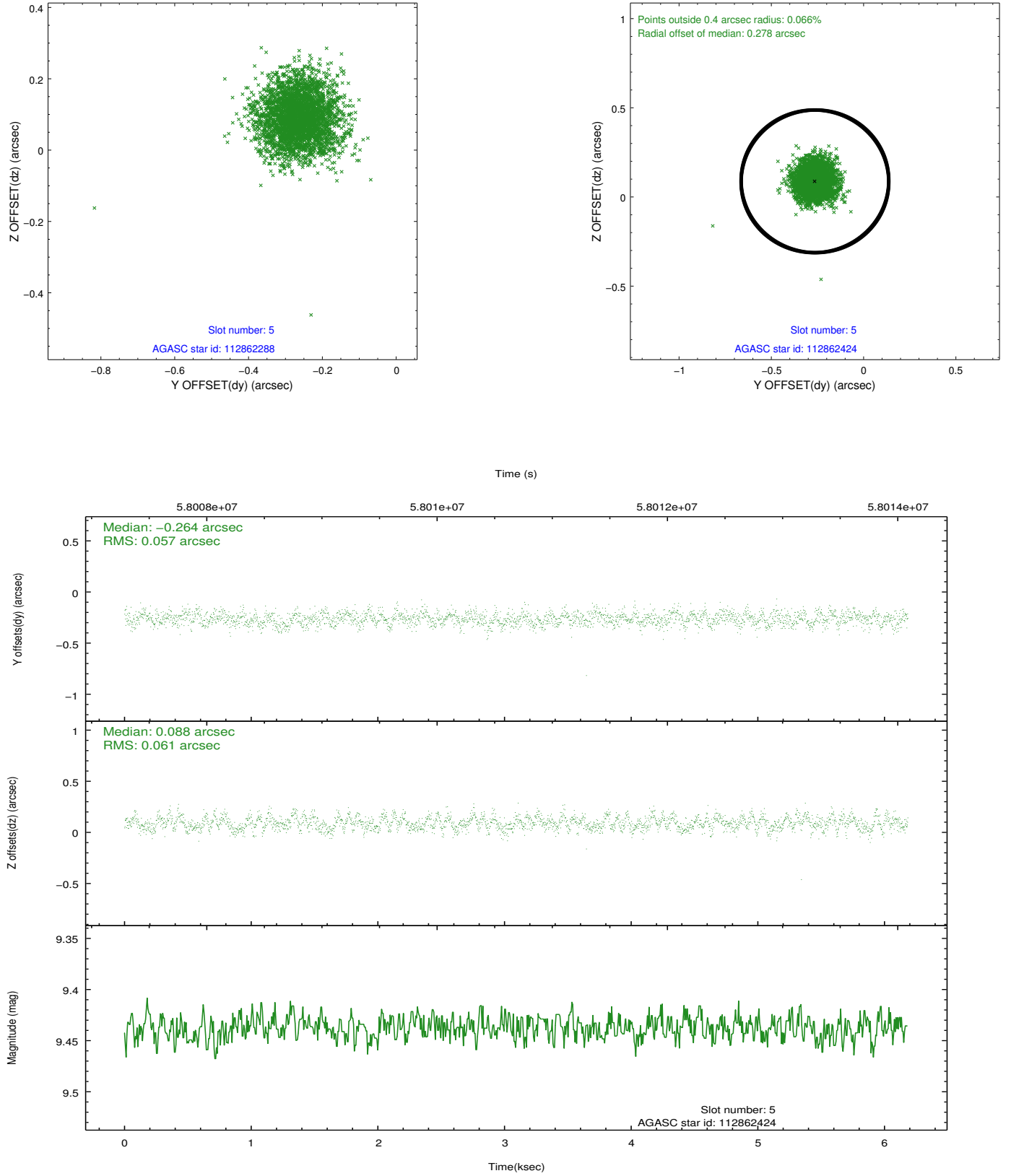
2.4.1 Slot 3



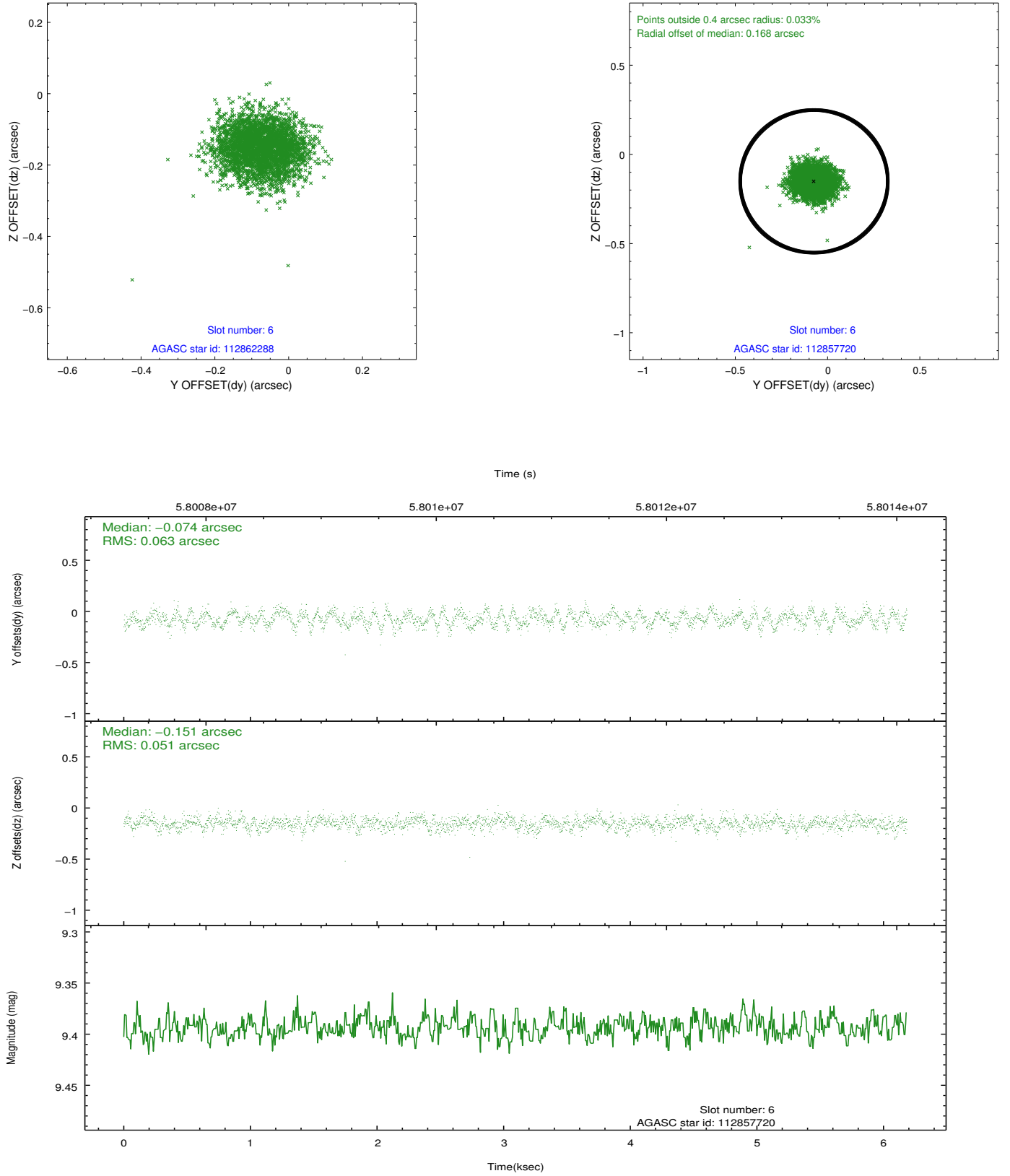
2.4.2 Slot 4



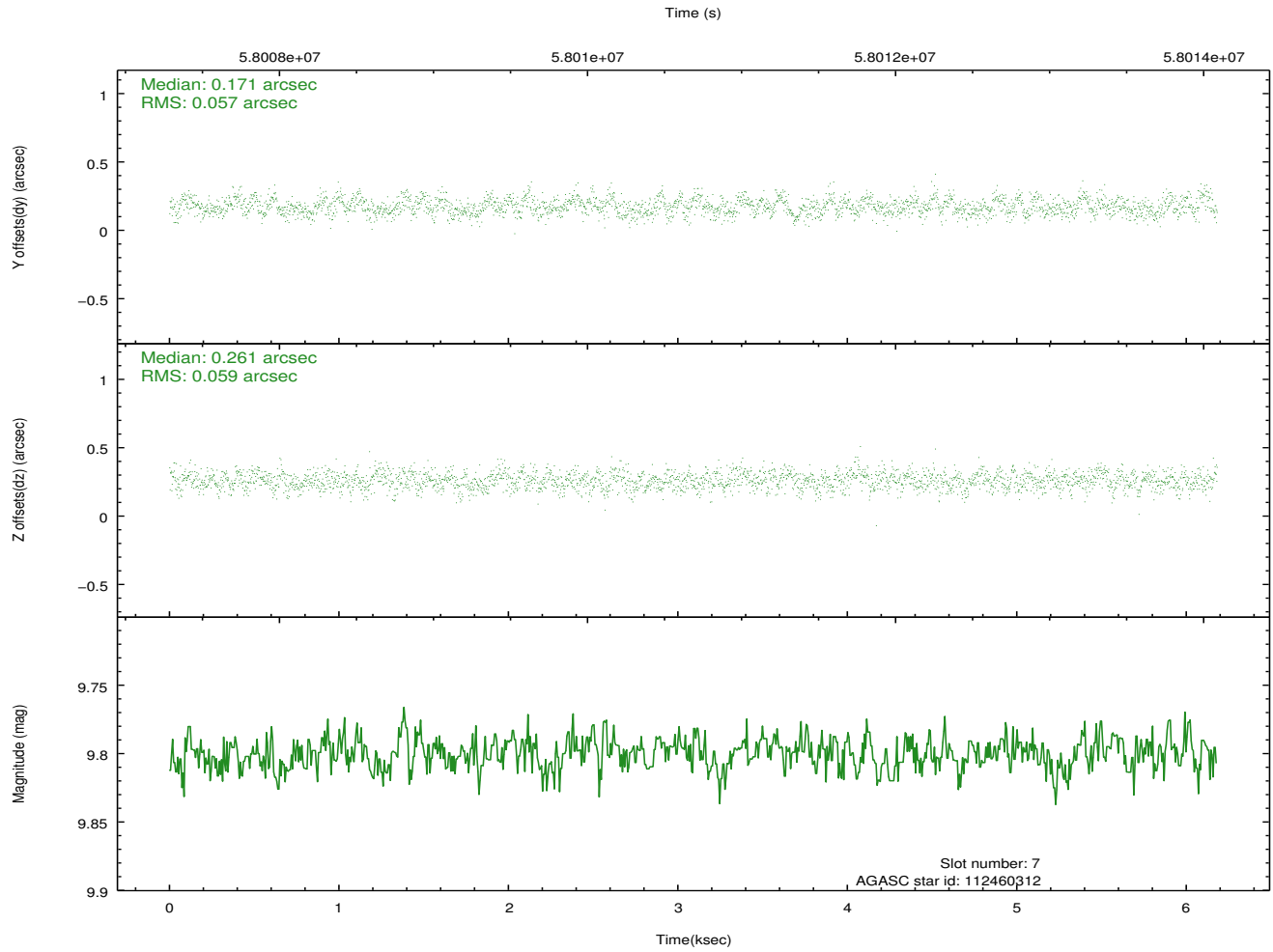
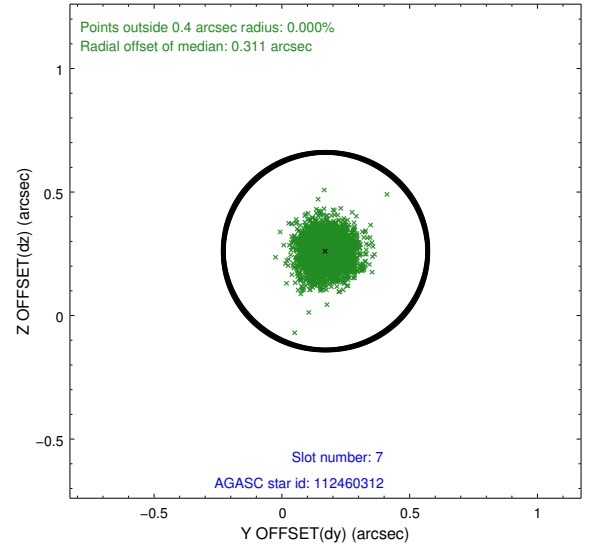
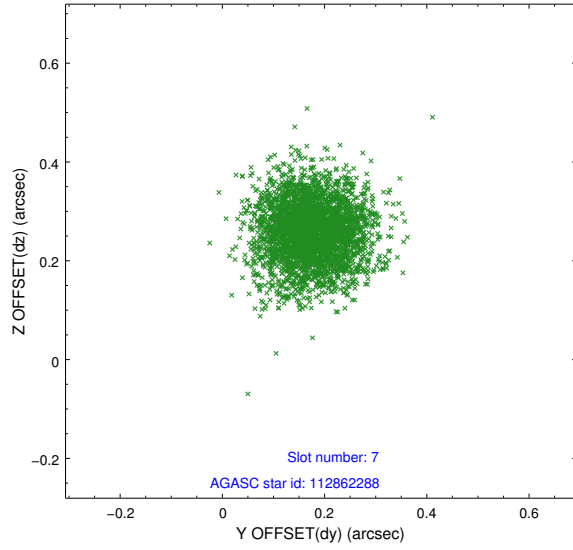
2.4.3 Slot 5



2.4.4 Slot 6

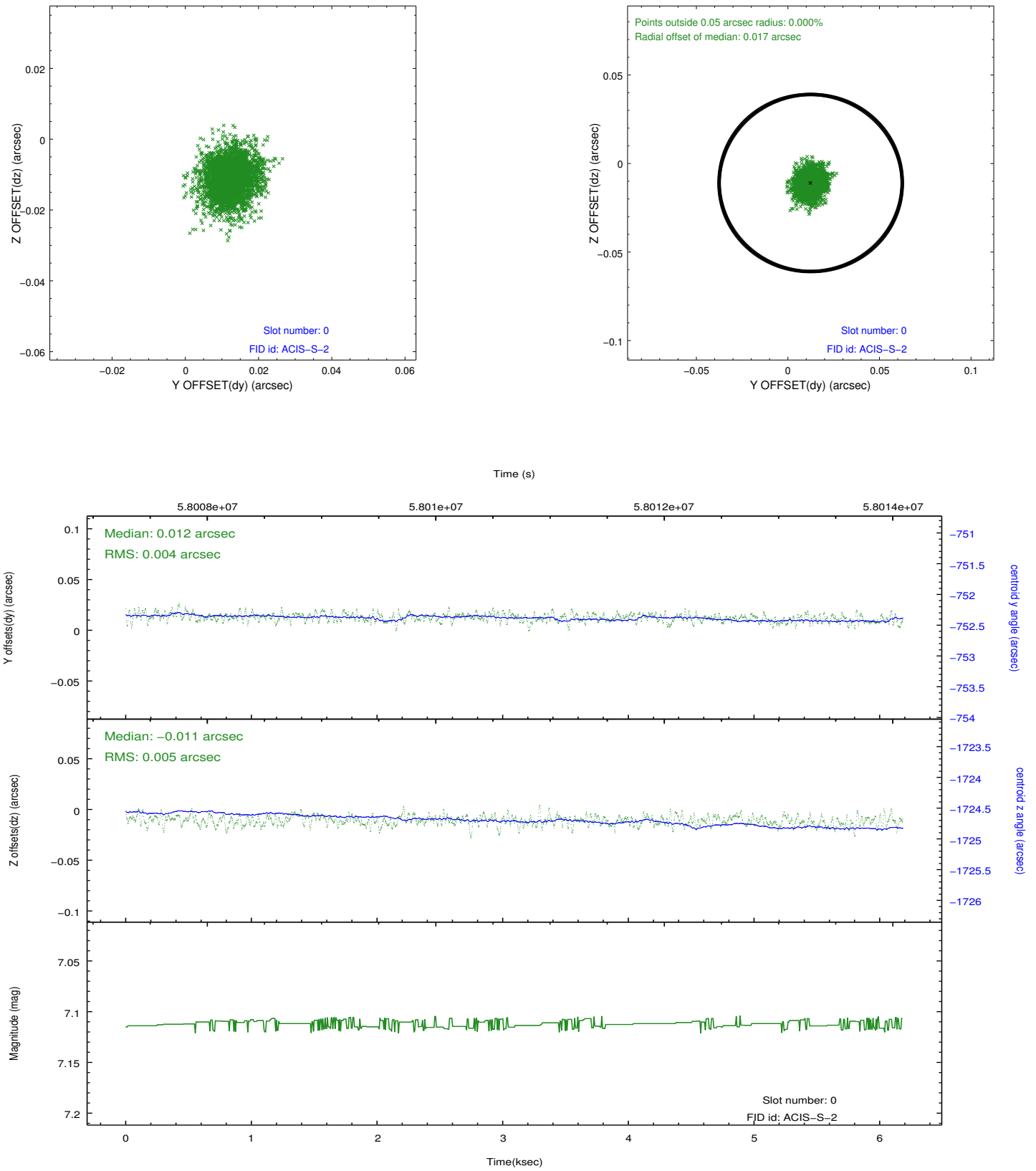


2.4.5 Slot 7

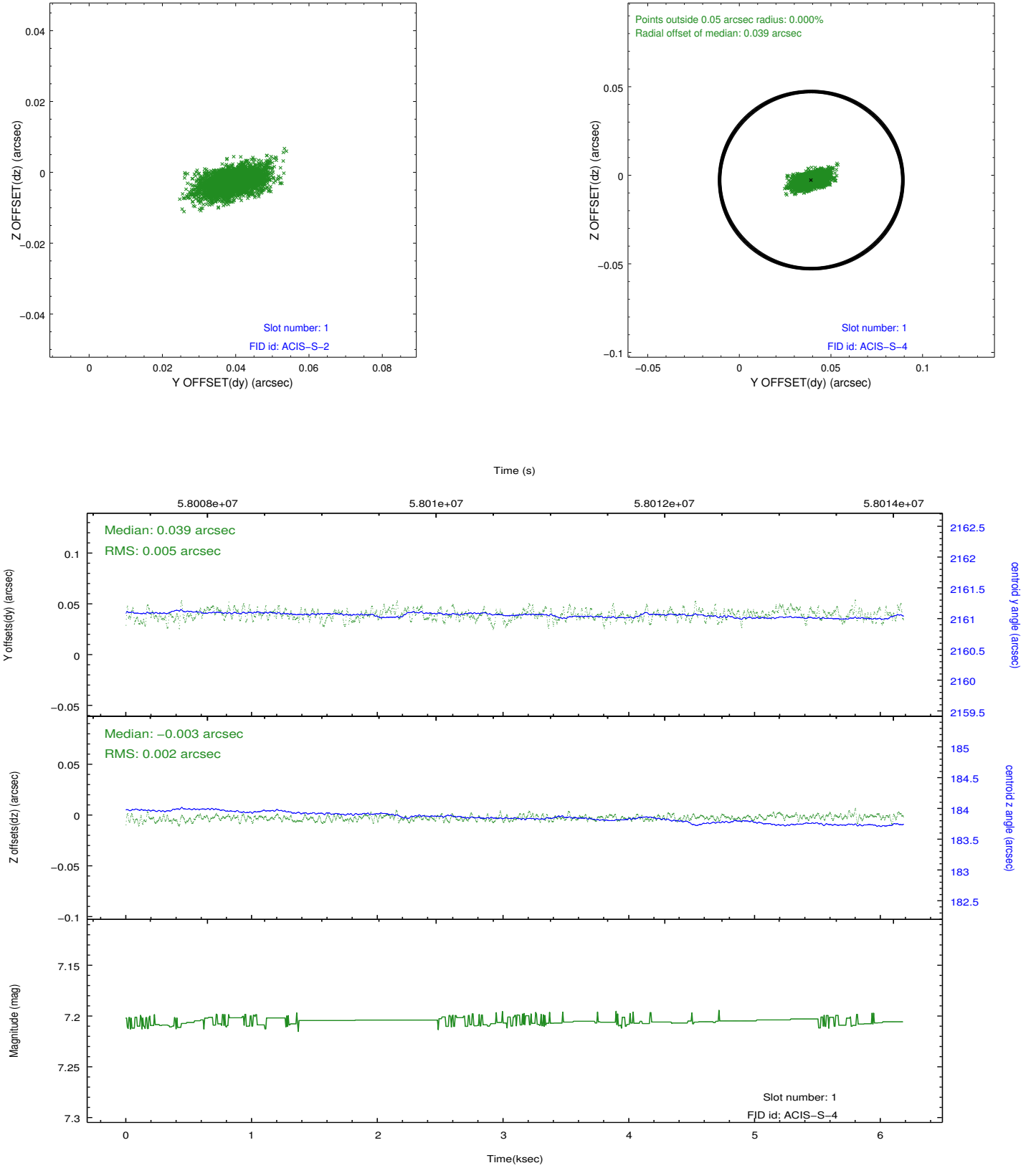


2.5 FID Slots

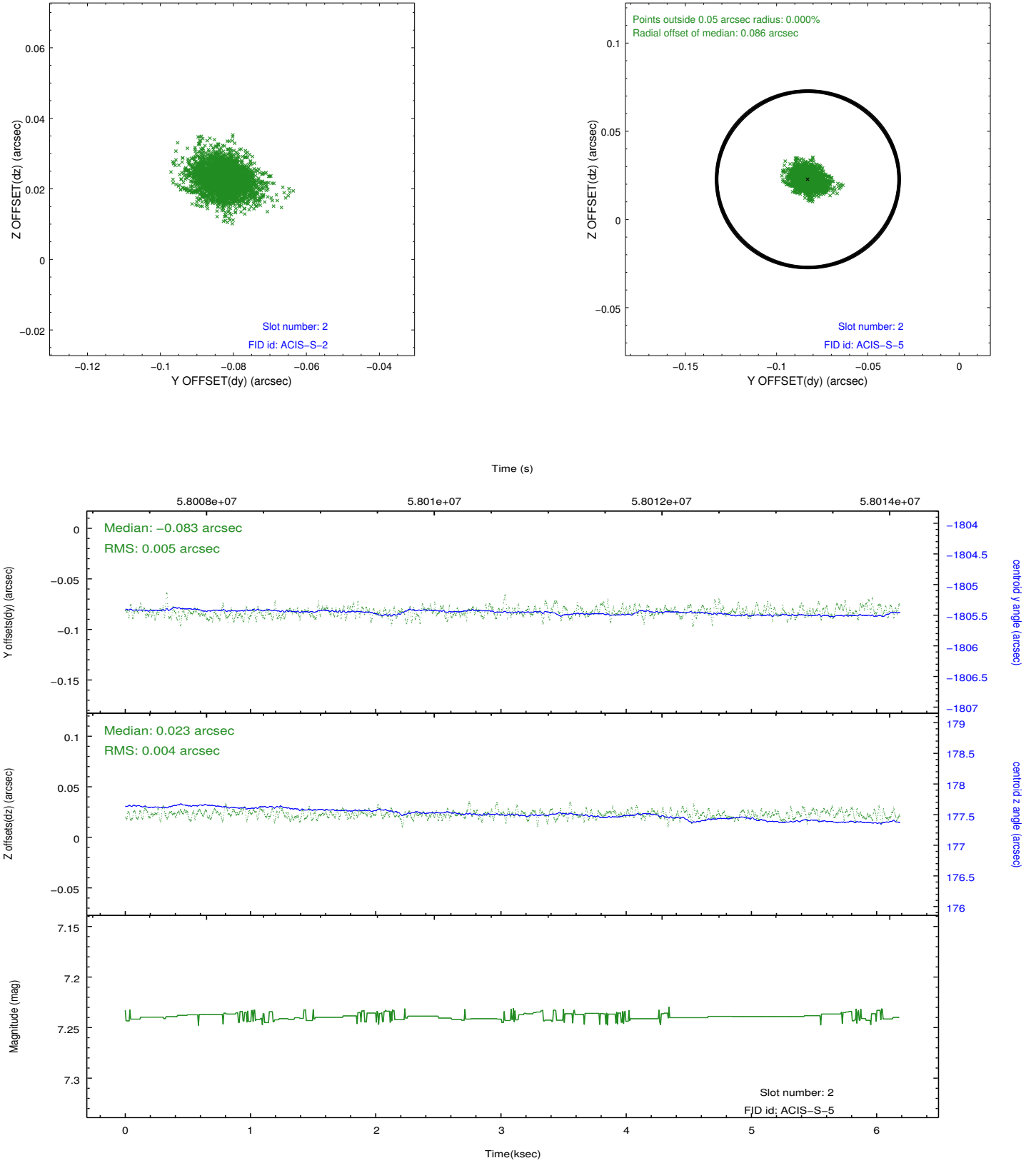
2.5.1 Slot 0



2.5.2 Slot 1



2.5.3 Slot 2



3 Point Sources

9.27 arcmin



A Summary

A.1 Status

V&V Scientist	Joy Nichols
V&V Date (YYYY-MM-DD)	2009.12.04
V&V Edition	1
V&V Disposition and Status	OK
V&V Charge Time	1.776

A.2 Comments

Charge time for this ObsId remains at previous value of 1.776 ksec, although with the current processing the charge time would have been 1.772 sec.=====

Focal plane temperature is warmer than -118.7 C degrees during the entire

observation. This temperature is the upper limit of the verified ACIS calibration for the front-illuminated chips. The focal plane temperature

is warmer than -116.7 degrees C for the entire observation. This temperature is the upper limit of the verified ACIS calibration for the back-illuminated chips.

The ACIS spectral response calibration is less accurate at these warmer temperatures than it is at -119.7 C. Users whose science objectives depend

on the most accurate spectral response (ie: fitting line-rich spectra) may

notice an effect. Users whose science objectives do not depend on the most accurate spectral response should not notice an effect.

This reprocessing

of the data applies no CTI correction because none is available for that temperature.