

V&V Reference Report

L2 ASCDS Version : 7.6.9

Observation 3784 - L2 Version 001
Chandra X-Ray Center

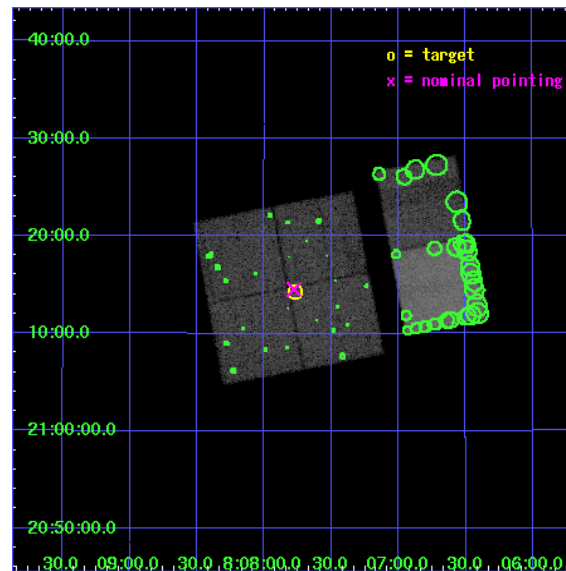
L2 Processing Date : Oct 14 2006

Contents

1	Front	2
2	OBI	3
2.1	OBI	3
2.1.1	Images	3
2.1.2	Bias	3
2.1.3	Parameters	4
2.1.4	Events	4
2.2	Compared Parameters	5
2.3	Aspect	6
2.4	Star Slots	9
2.4.1	Slot 3	9
2.4.2	Slot 4	10
2.4.3	Slot 5	11
2.4.4	Slot 6	12
2.4.5	Slot 7	13
2.5	FID Slots	14
2.5.1	Slot 0	14
2.5.2	Slot 1	15
2.5.3	Slot 2	16
3	Point Sources	17
A	Summary	18
A.1	Status	18
A.2	Comments	18

1 Front

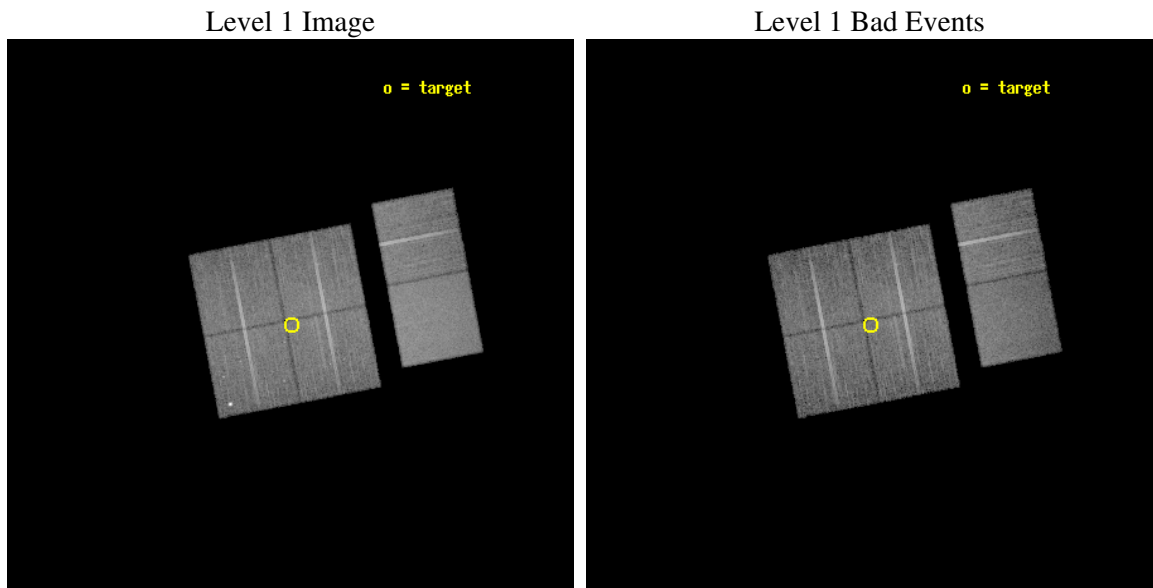
seq_num	400271
obs_id	3784
title	REOLVING THE SHORT GAMMA-RAY BURST MYSTERY
observer	Dr. Kevin Hurley
object	GRB021201
dtcycle	0
cycle	P
ra_targ	121.942083
dec_targ	21.238306
ra_nom	121.94483938459
dec_nom	21.242140339262
roll_nom	79.141383392741
revision	2
ontime	19967.999925613
livetime	19715.153087269
ontime0	19967.999925613
ontime1	19967.999925613
ontime2	19967.999925613
ontime3	19967.999925613
ontime6	19967.999925613
ontime7	19967.999925613
l2events	177590



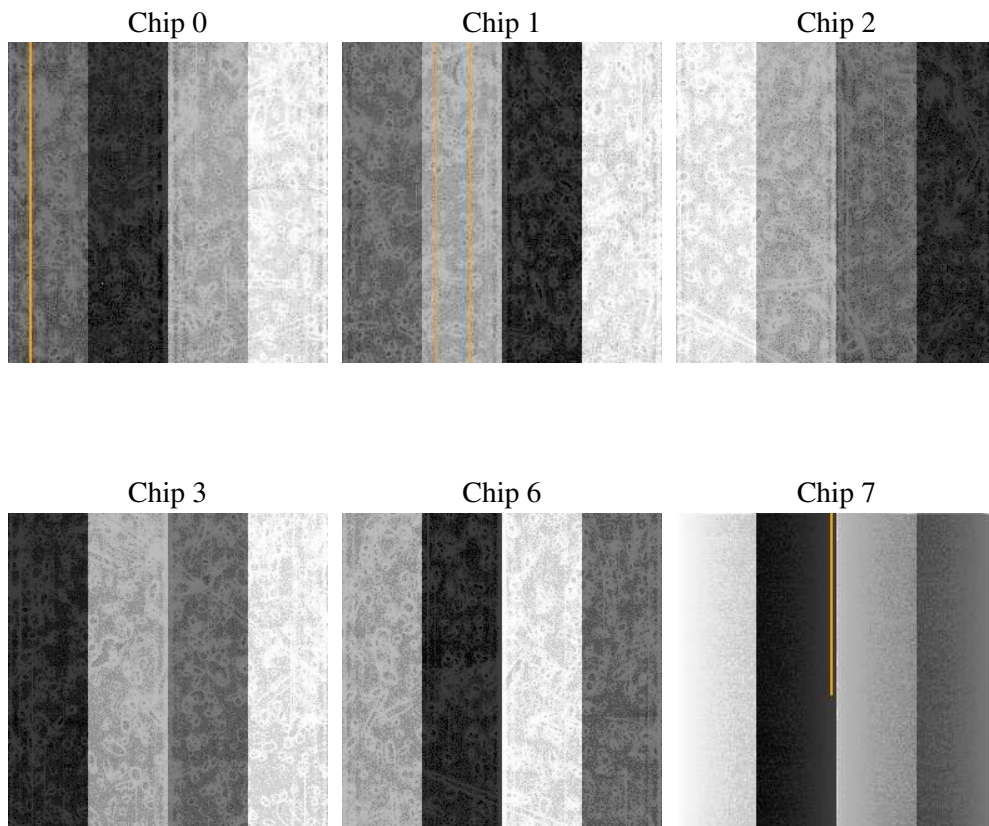
2 OBI

2.1 OBI

2.1.1 Images



2.1.2 Bias



2.1.3 Parameters

obi_num	0
ascdsver	7.6.9
caldsver	3.2.3
date	2006-10-14T21:33:39
revision	2

sched_exp_time	20000.000000
ontime	19971.094123214
ontime0	19971.094123214
ontime1	19971.094123214
ontime2	19971.094123214
ontime3	19971.094123214
ontime6	19971.094123214
ontime7	19971.094143093
l1events	823642

2.1.4 Events

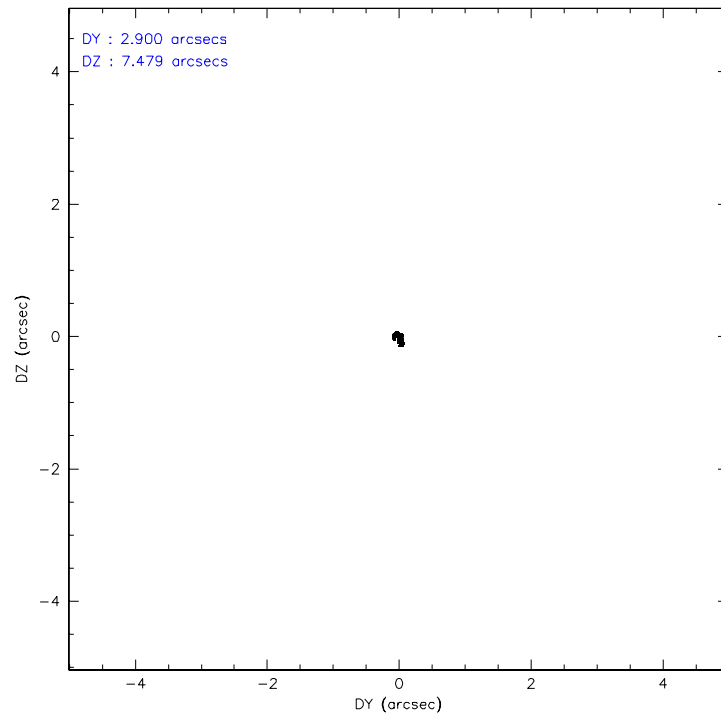
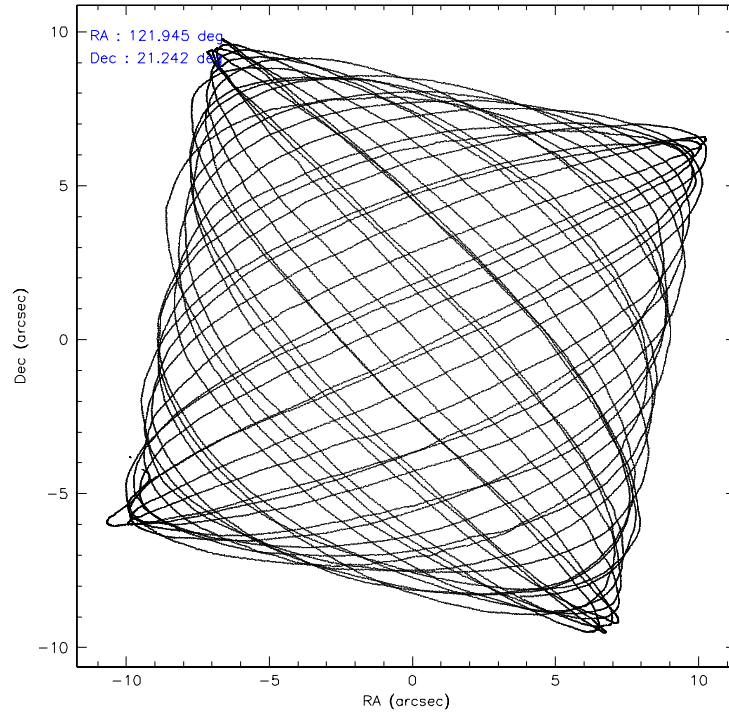
	ccd 0	ccd 1	ccd 2	ccd 3	ccd 6	ccd 7
level 1 events	119159	126684	134884	132220	136487	174208
rejected events	96087	98862	112375	108520	112891	103016
rejected %	80%	78%	83%	82%	82%	59%

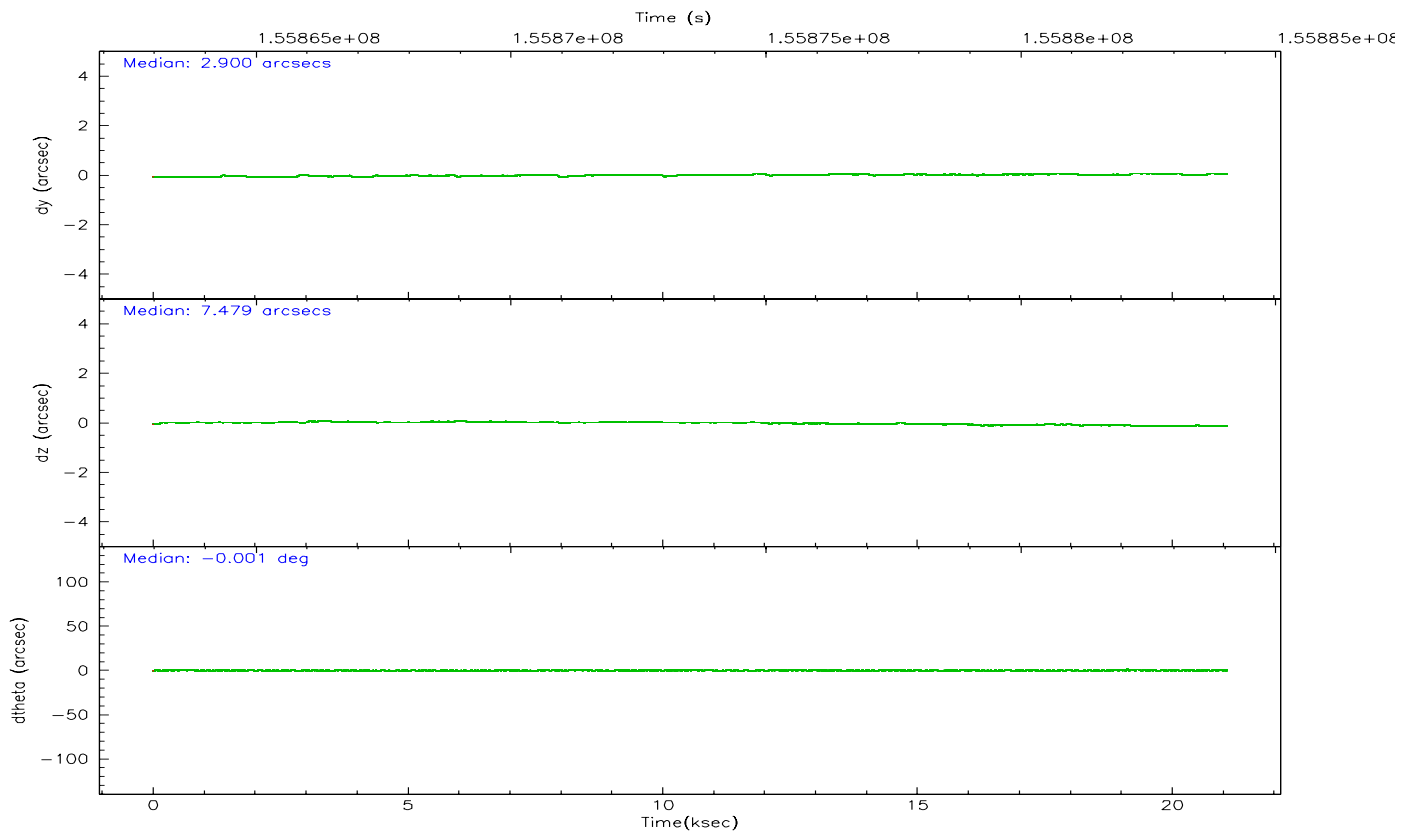
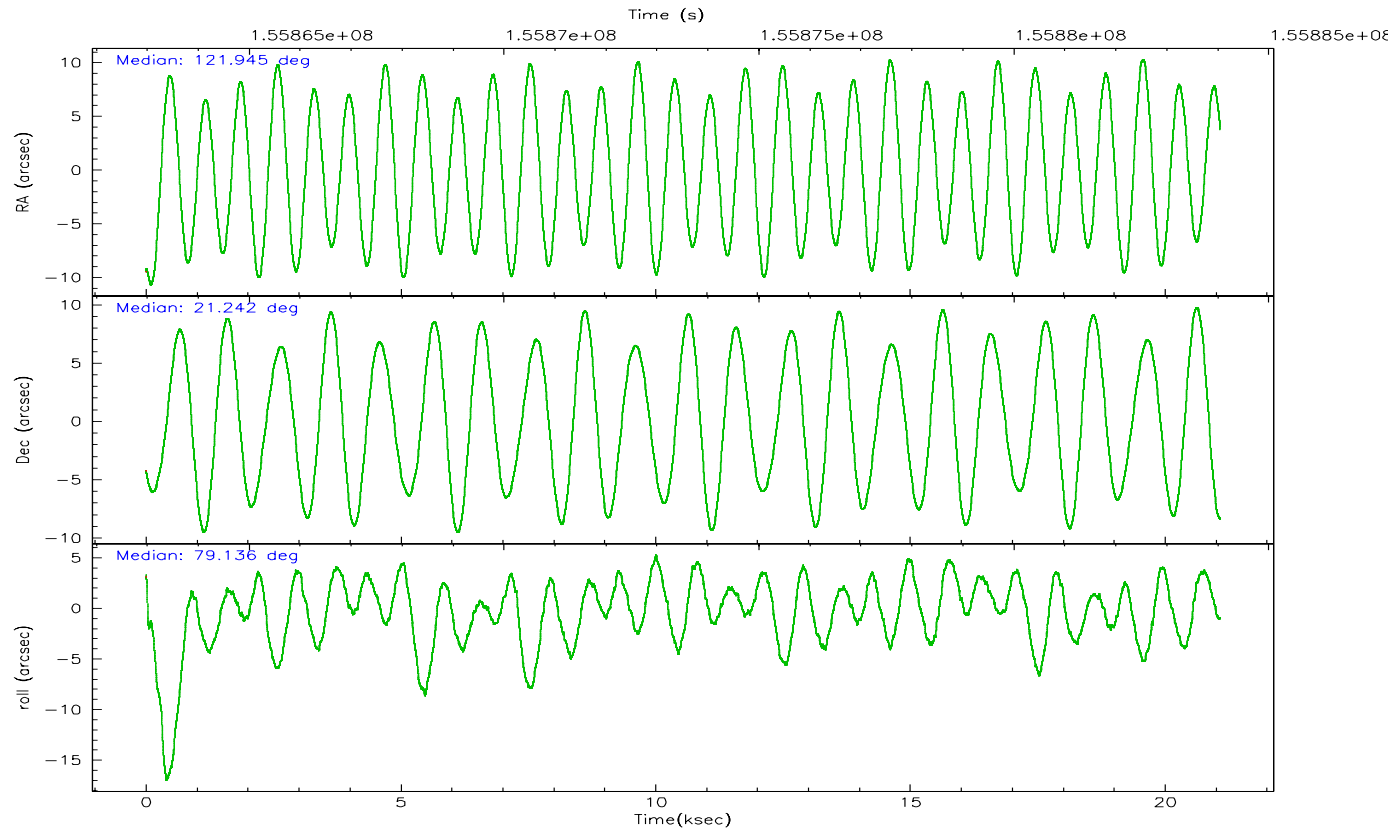
	ccd 0	ccd 1	ccd 2	ccd 3	ccd 6	ccd 7
grade 0 events	12853	16098	12920	13624	12486	4241
	10%	12%	9%	10%	9%	2%
grade 1 events	99	98	118	91	95	94
	0%	0%	0%	0%	0%	0%
grade 2 events	3859	4498	3450	3704	4125	16700
	3%	3%	2%	2%	3%	9%
grade 3 events	1779	1912	1637	1659	1822	3645
	1%	1%	1%	1%	1%	2%
grade 4 events	1672	1905	1647	1762	1727	3507
	1%	1%	1%	1%	1%	2%
grade 5 events	4815	5099	4564	5149	5604	10962
	4%	4%	3%	3%	4%	6%
grade 6 events	2912	3413	2856	2952	3437	43106
	2%	2%	2%	2%	2%	24%
grade 7 events	91170	93661	107692	103279	107191	91953
	76%	73%	79%	78%	78%	52%

2.2 Compared Parameters

Parameter	Planned	Actual	Parameter	Planned	Actual
Instrument	ACIS	ACIS	Obspar format version number	6	6
Detector	ACIS-012367	ACIS-012367	Obspar file type	PREDICTED	ACTUAL
Grating	NONE	NONE	Obspar update status	NONE	UPDATED
Data mode	FAINT	FAINT	Number of optional ACIS chips dropped	0	0
Observation mode	POINTING	POINTING	On-chip summing requested	N	N
Pointing RA	121.954599	121.9448393845925	Subarray requested	NONE	NONE
Pointing Dec	21.216325	21.24214033926231	Alternating exposures requested	N	N
Pointing Roll	78.929154	79.14138339274136	Primary exposure time	0.000000	3.2
SIM focus pos (mm)	-0.782348	-0.7809083437167272			
SIM defocus (mm)	0	0.001439871863259334			
SIM translation stage pos (mm)	-233.592463	-233.5874344608287			
SIM translation stage offset (mm)	0	-0.005018542100998502			
Observation start time	155864056.184000	155862643.47531			
Observation start date	2002-12-09T23:33:12	2002-12-09T23:10:43			
Observation end time	155884056.184000	155884535.42622			
Observation end date	2002-12-10T05:06:32	2002-12-10T05:15:35			
Read mode	TIMED	TIMED			

2.3 Aspect



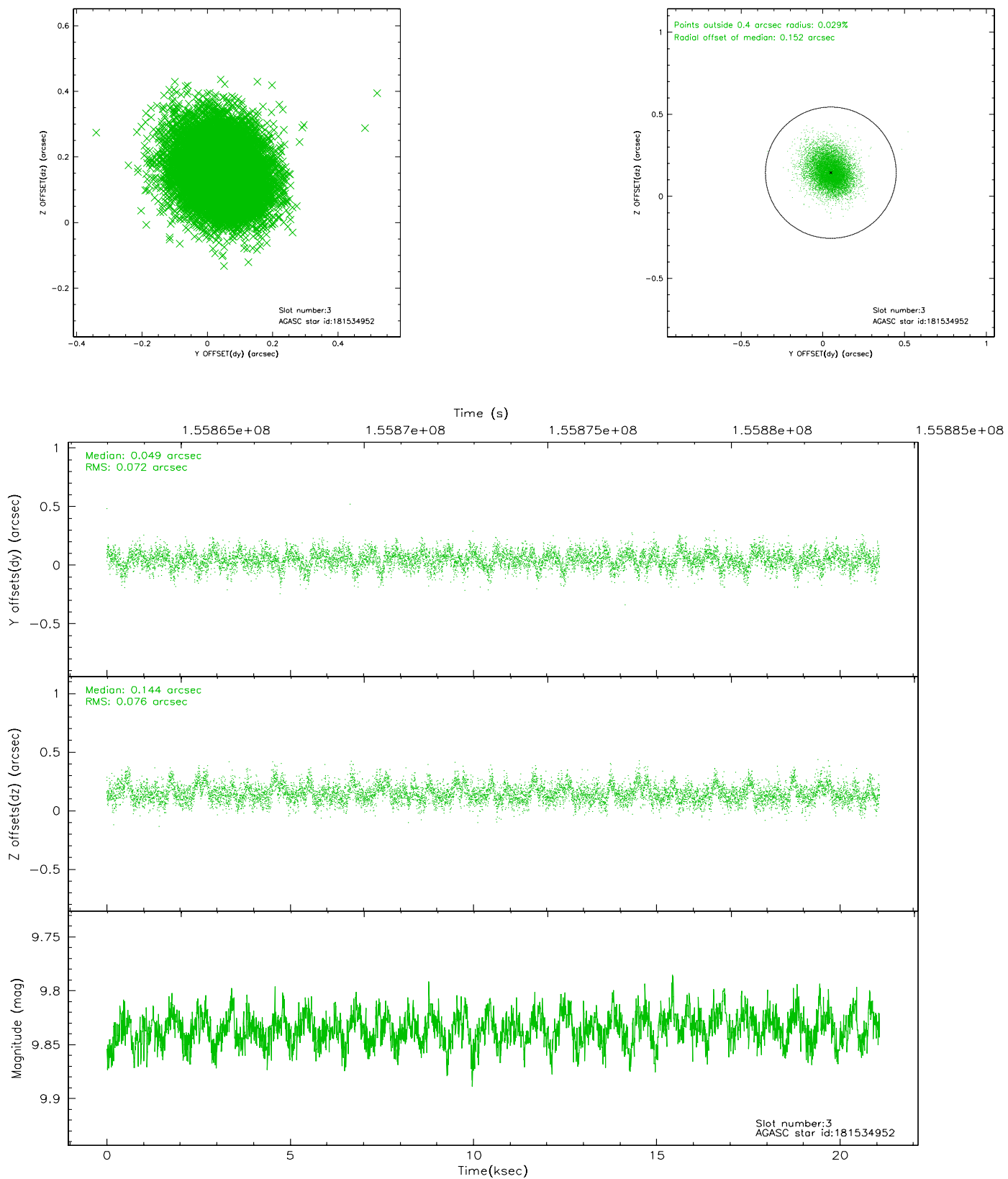


Slot Statistics

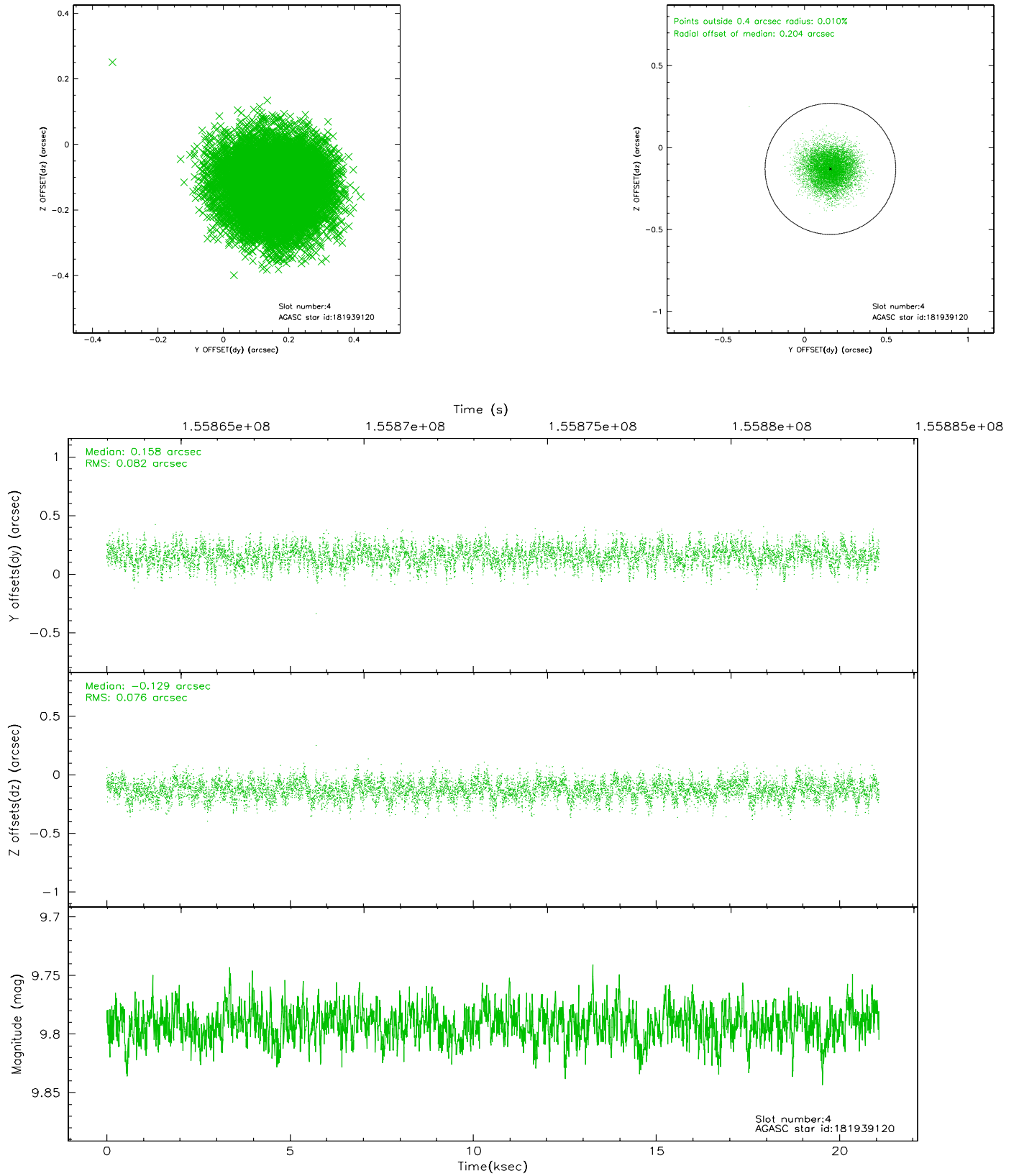
slot	status	id	mag	n_pts	med_dy	med_dz	dr1	dr2	ra	dec	mean_y	mean_z
0	FID	ACIS-I-1	7.25	5141	-0.008	0.046	0.008	0.014	0.000000	0.000000	936.88	-830.83
1	FID	ACIS-I-5	7.24	5141	-0.052	0.049	0.008	0.013	0.000000	0.000000	-1811.15	1066.62
2	FID	ACIS-I-6	7.26	5140	-0.031	-0.025	0.007	0.012	0.000000	0.000000	402.26	1711.20
3	GUIDE	181534952	9.83	10275	0.049	0.144	0.111	0.183	122.257601	20.539153	-2193.81	-1470.84
4	GUIDE	181939120	9.79	10280	0.158	-0.129	0.121	0.190	121.402306	20.783384	-1882.24	1524.92
5	GUIDE	182061696	9.75	10276	-0.084	0.046	0.114	0.185	122.373049	21.367790	807.57	-1271.74
6	GUIDE	181942008	9.34	10280	0.017	-0.165	0.093	0.149	121.454983	20.803759	-1776.40	1364.64
7	GUIDE	182062104	9.73	10266	-0.140	0.098	0.096	0.156	122.204442	21.589629	1481.27	-562.56

2.4 Star Slots

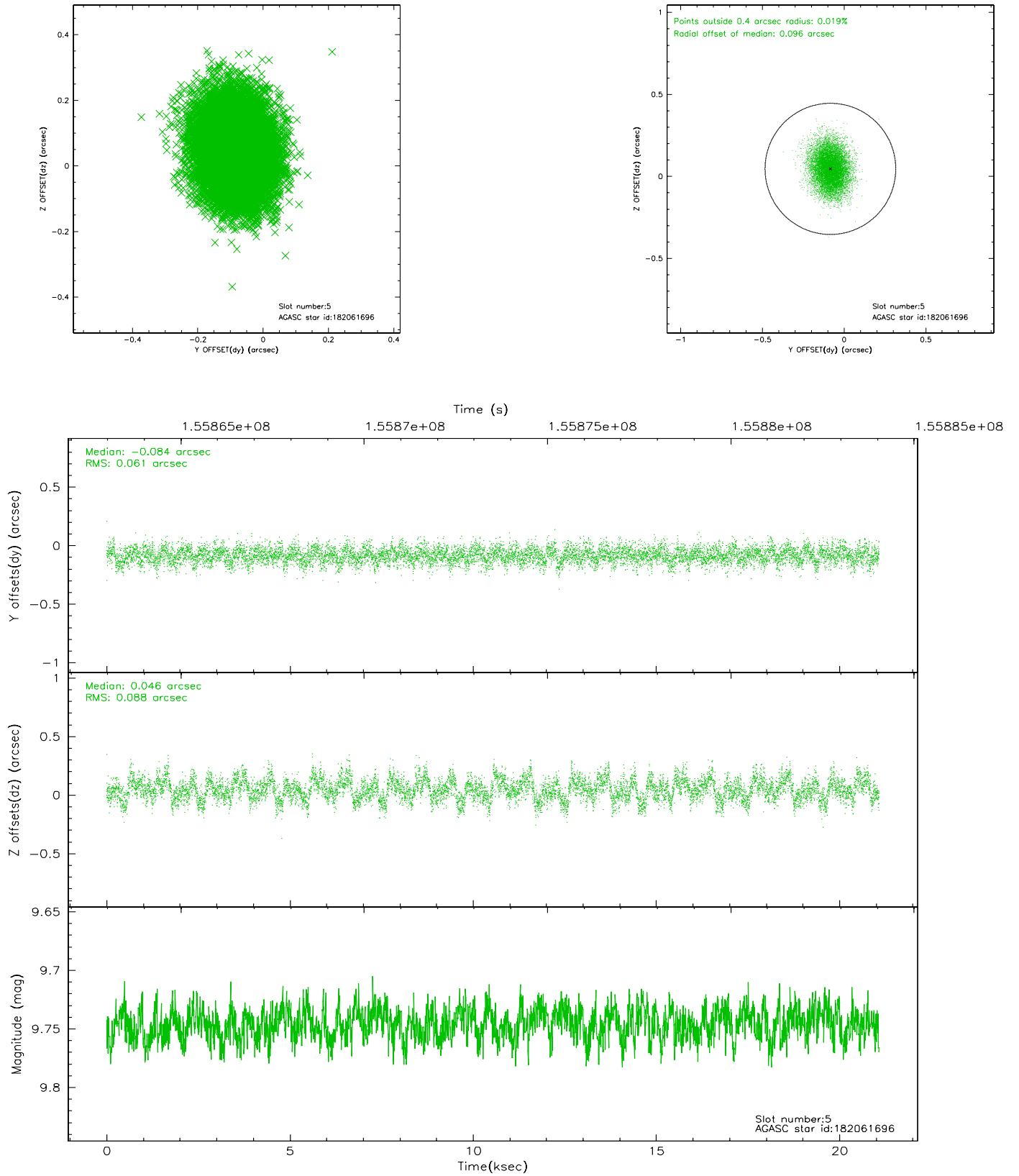
2.4.1 Slot 3



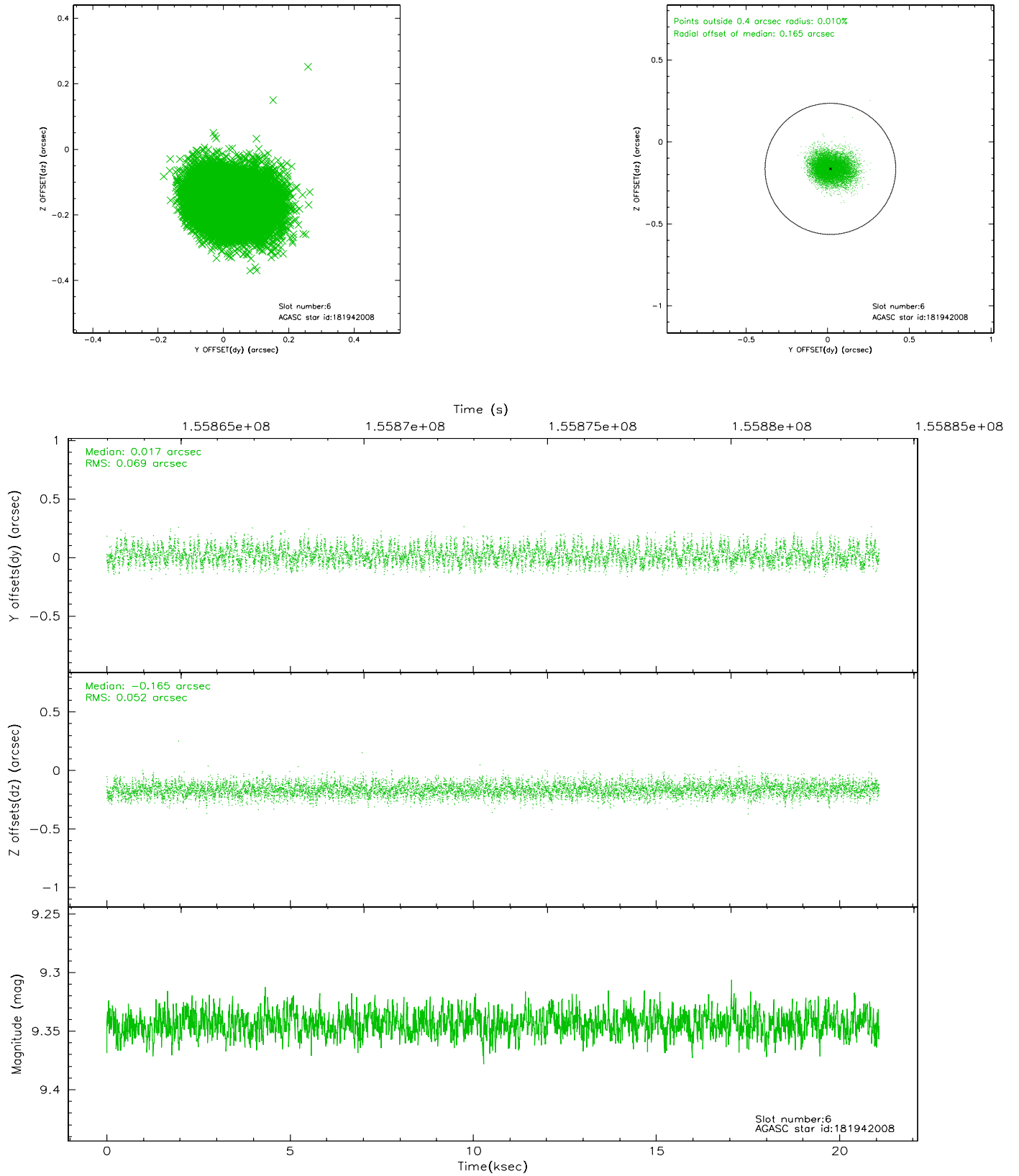
2.4.2 Slot 4



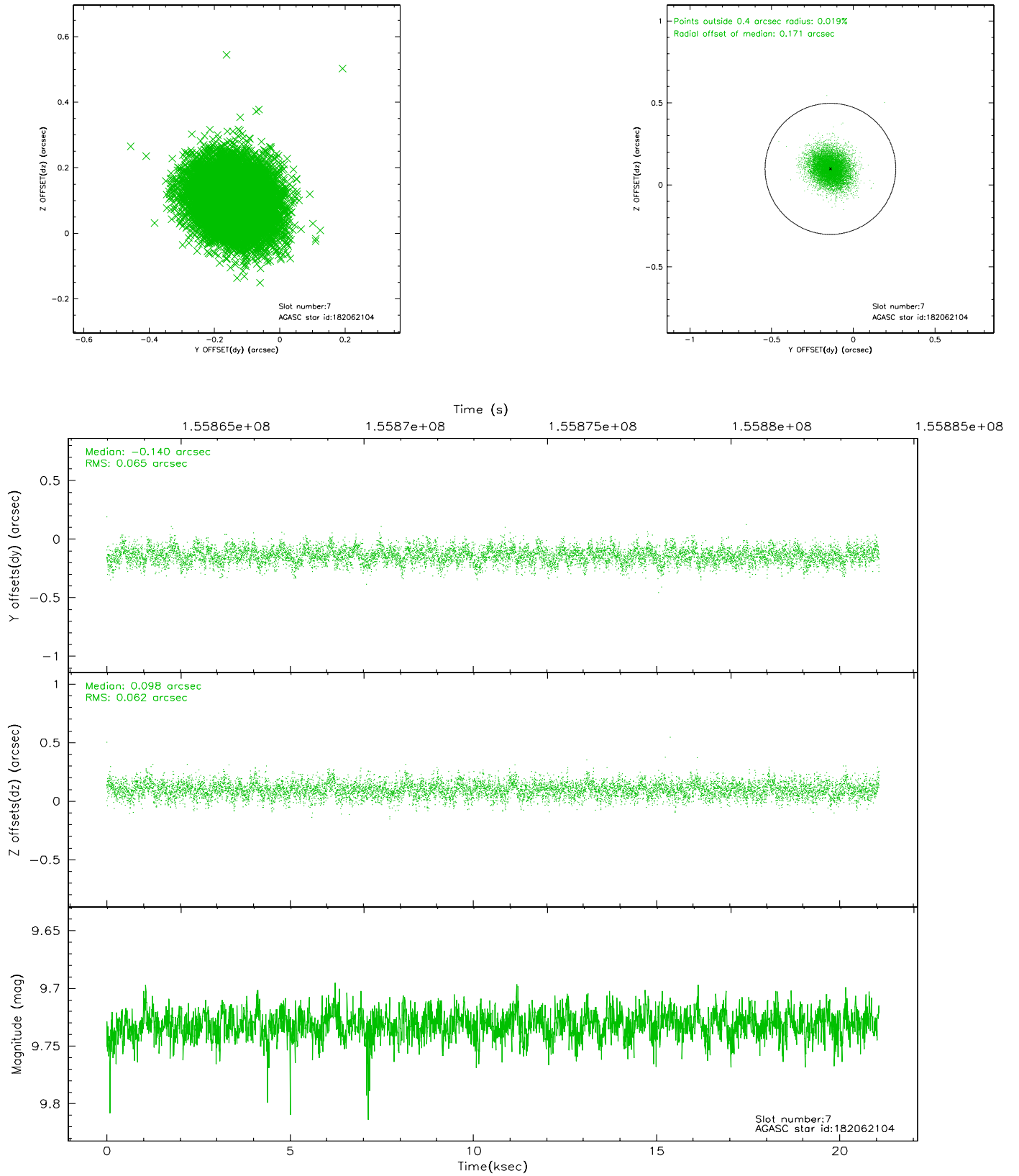
2.4.3 Slot 5



2.4.4 Slot 6

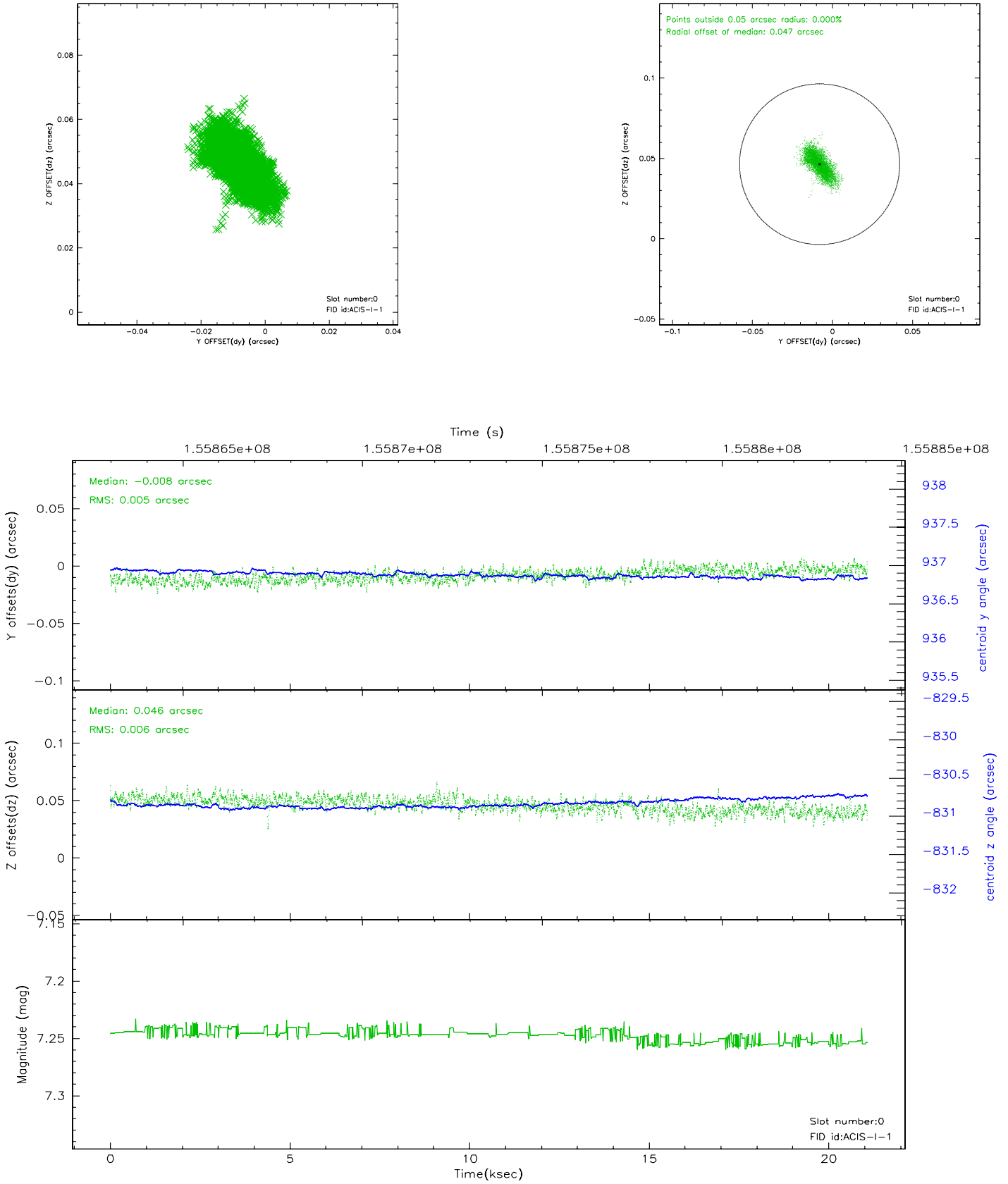


2.4.5 Slot 7

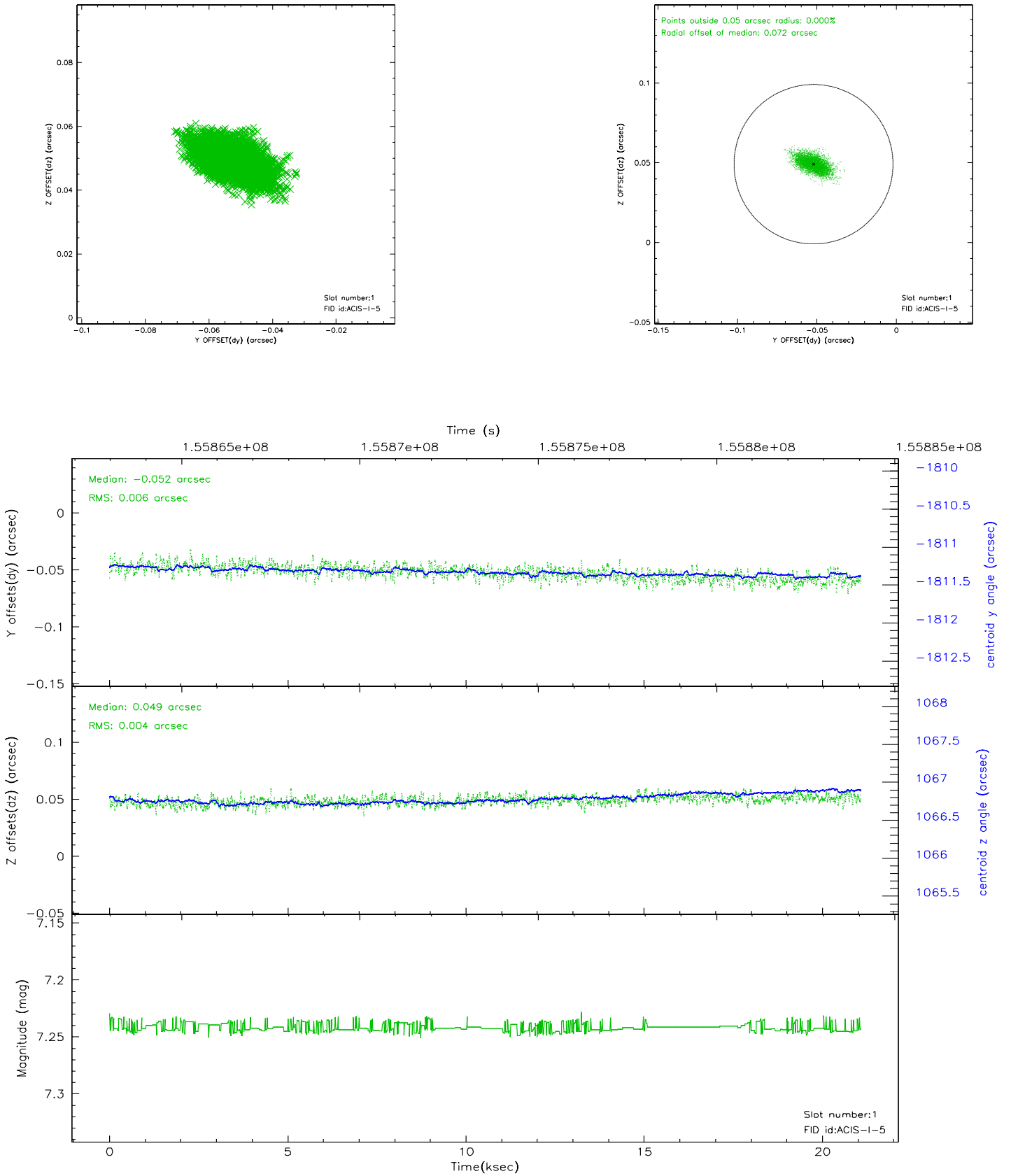


2.5 FID Slots

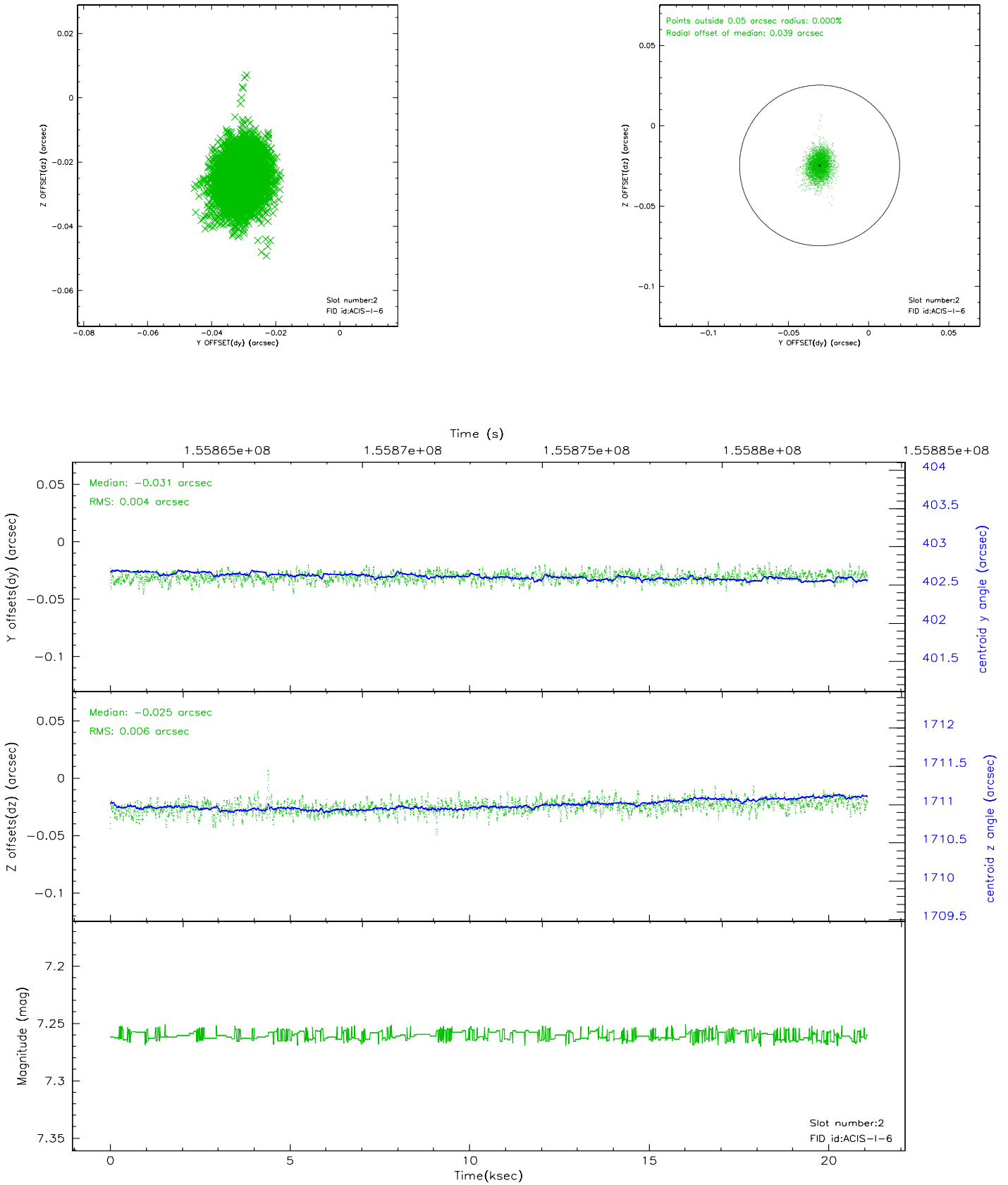
2.5.1 Slot 0



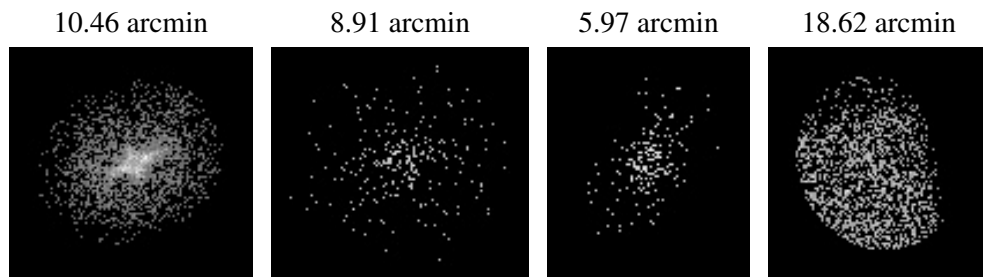
2.5.2 Slot 1



2.5.3 Slot 2



3 Point Sources



A Summary

A.1 Status

V&V Scientist	Beth Sundheim
V&V Date (YYYY-MM-DD)	2006.10.15
V&V Edition	1
V&V Disposition and Status	OK
V&V Charge Time	19.967

A.2 Comments