

V&V Reference Report

L2 ASCDS Version : 7.6.8

Observation 3704 - L2 Version 001
Chandra X-Ray Center

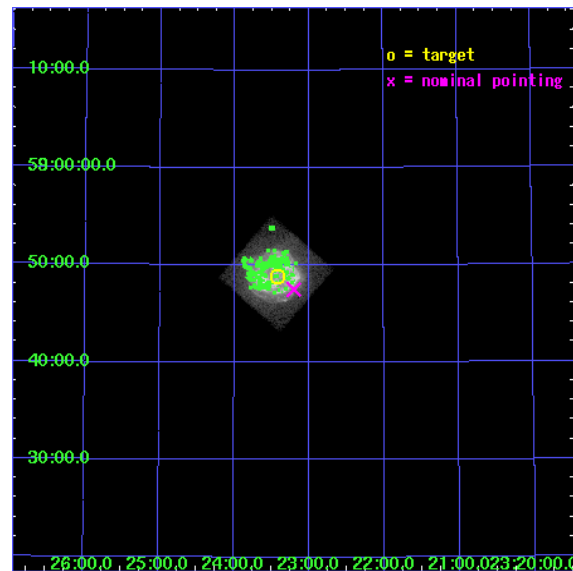
L2 Processing Date : Jun 29 2006

Contents

1	Front	2
2	OBI	3
2.1	OBI	3
2.1.1	Images	3
2.1.2	Bias	3
2.1.3	Parameters	4
2.1.4	Events	4
2.2	Compared Parameters	5
2.3	Aspect	6
2.4	Star Slots	9
2.4.1	Slot 3	9
2.4.2	Slot 4	10
2.4.3	Slot 5	11
2.4.4	Slot 6	12
2.4.5	Slot 7	13
2.5	FID Slots	14
2.5.1	Slot 0	14
2.5.2	Slot 1	15
2.5.3	Slot 2	16
3	Point Sources	17
A	Summary	18
A.1	Status	18
A.2	Comments	18

1 Front

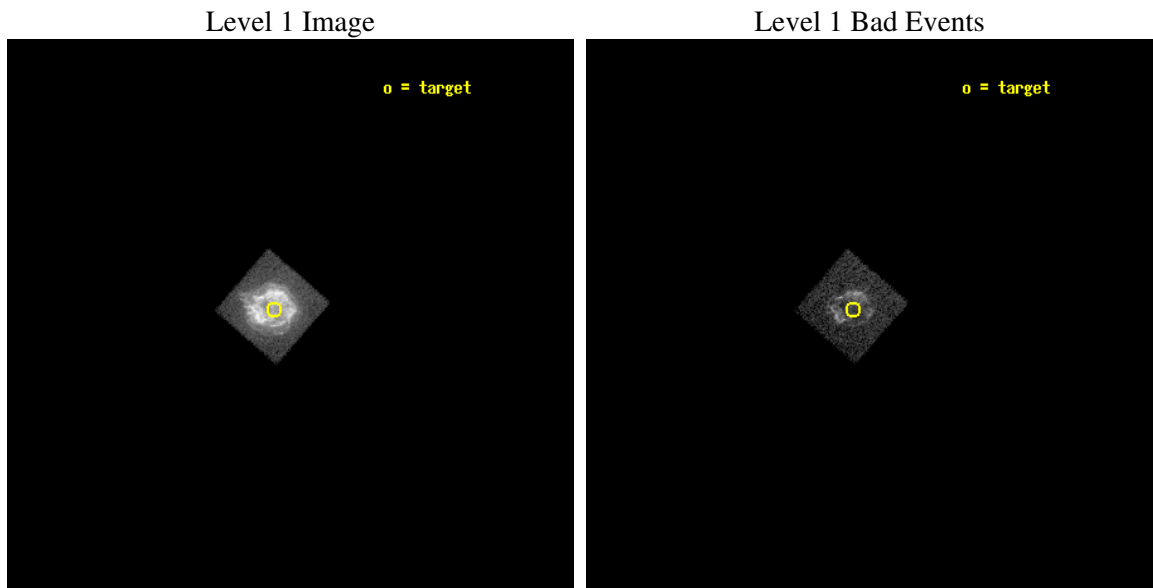
seq_num	590316
obs_id	3704
title	AO4B OBSERVATIONS OF THE STANDARD CANDLES CAS A AND G21.5-09
observer	Dr. CXC Calibration
object	CAS A[S3,-120,-2.0,0,0]
dtcycle	0
cycle	P
ra_targ	350.8575
dec_targ	58.814833
ra_nom	350.8008085743
dec_nom	58.791758716733
roll_nom	220.93560767963
revision	2
ontime	1159.8923072517
livetime	1145.205052454
ontime4	2044.677131474
ontime5	2054.3999923468
ontime6	2054.3999923468
ontime7	1159.8923072517
ontime8	2054.3999923468
ontime9	2054.3999923468
l2events	346044



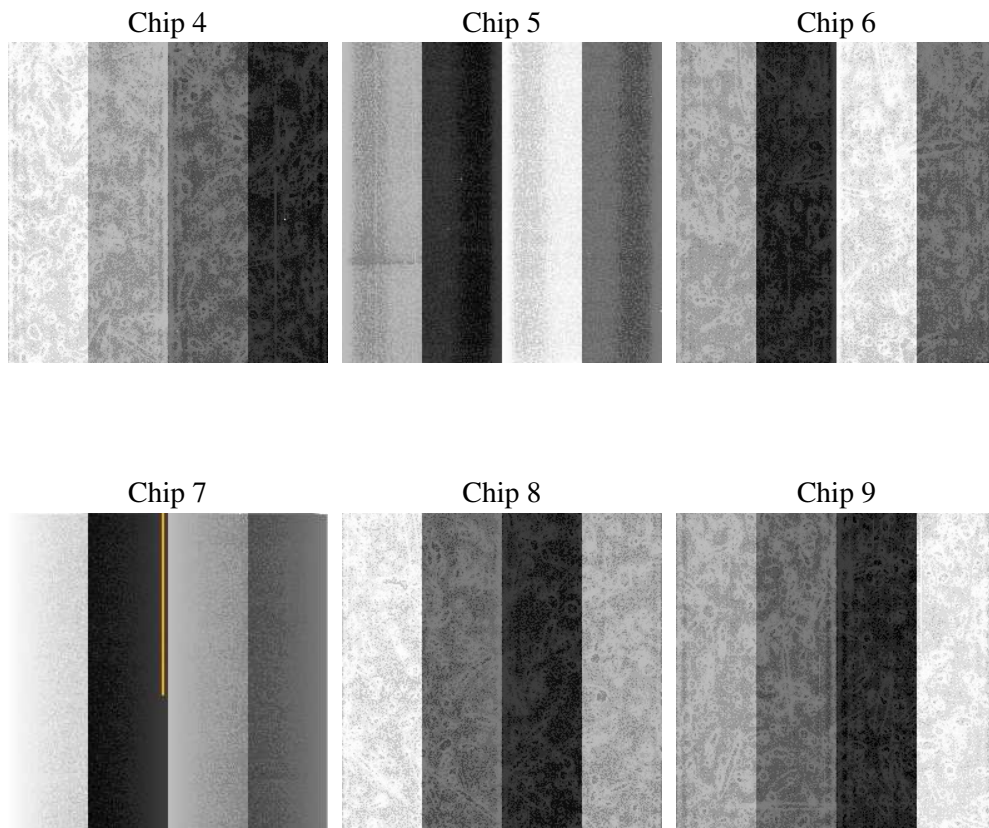
2 OBI

2.1 OBI

2.1.1 Images



2.1.2 Bias



2.1.3 Parameters

obi_num	0
ascdsver	7.6.8
caldsver	3.2.2
date	2006-06-29T10:01:24
revision	2

sched_exp_time	2105.000000
ontime	1163.5291733146
ontime4	2051.5550176501
ontime5	2061.2778785229
ontime6	2061.2778785229
ontime7	1163.5291733146
ontime8	2061.2778785229
ontime9	2061.2778785229
l1events	394347

2.1.4 Events

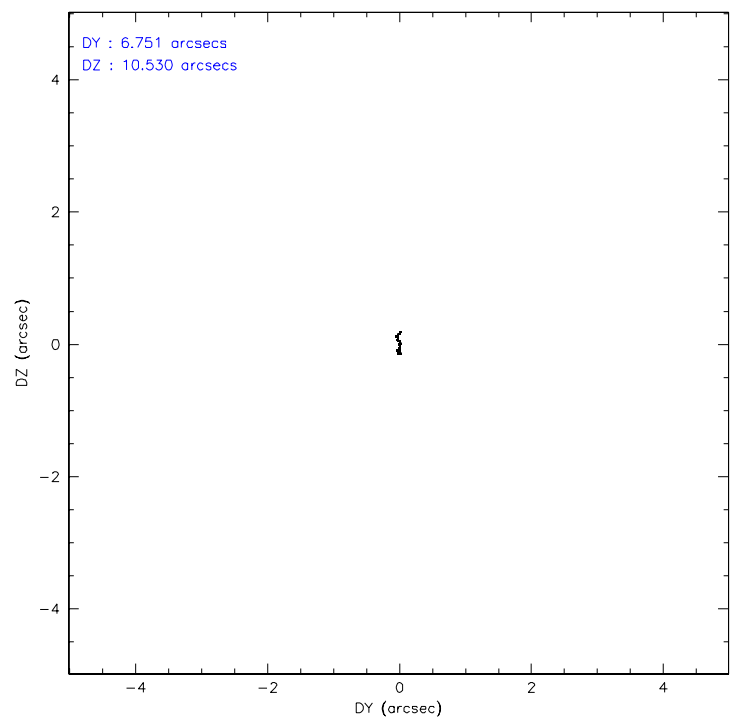
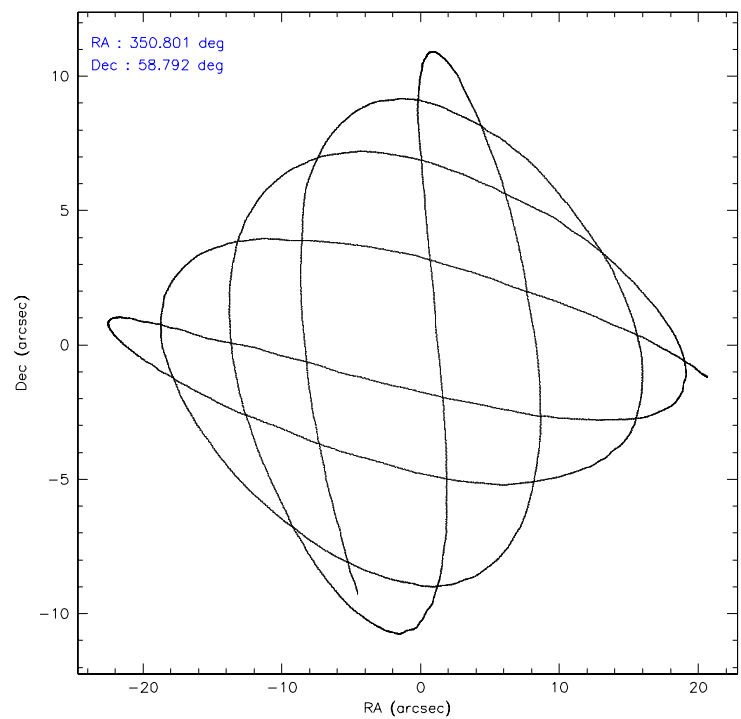
	ccd 4	ccd 5	ccd 6	ccd 7	ccd 8	ccd 9
level 1 events	0	0	0	394347	0	0
rejected events	0	0	0	44509	0	0
rejected %	0%	0%	0%	11%	0%	0%

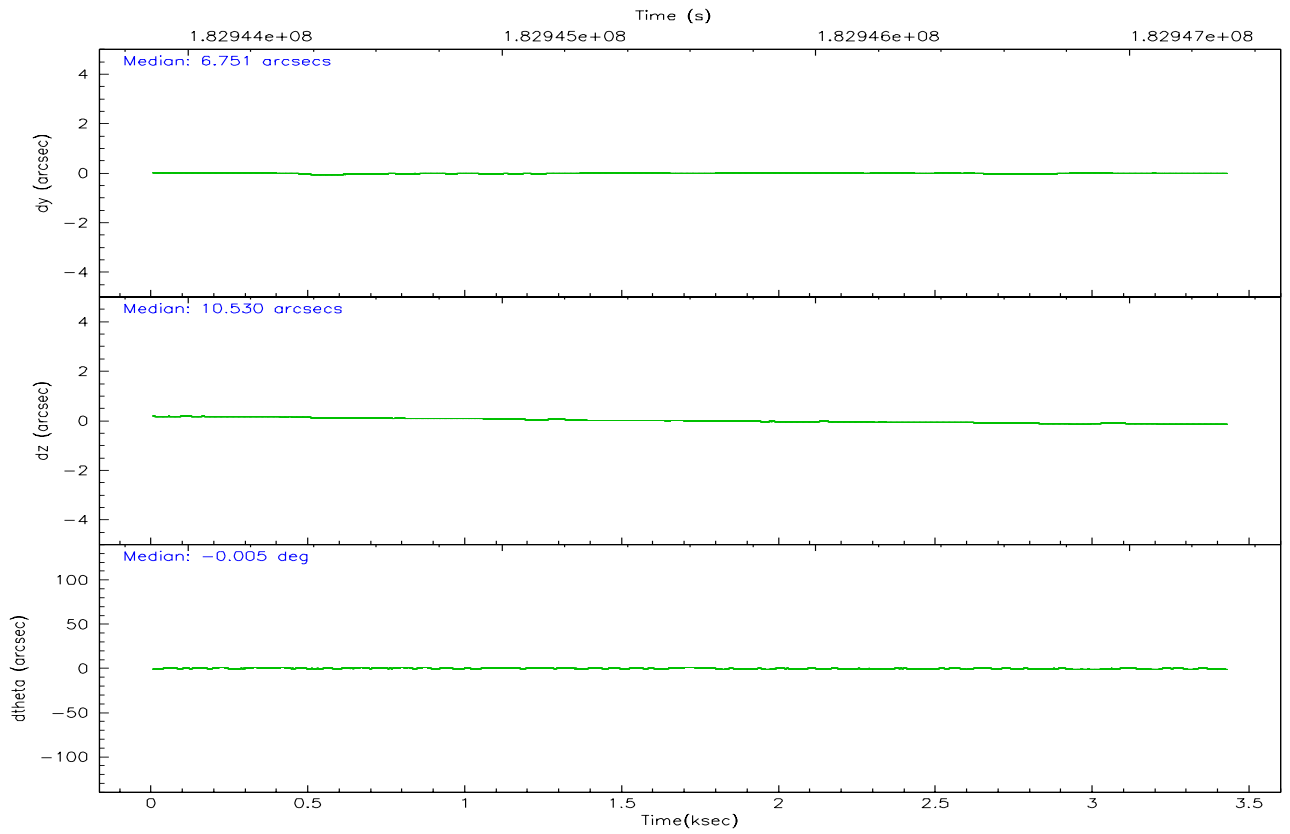
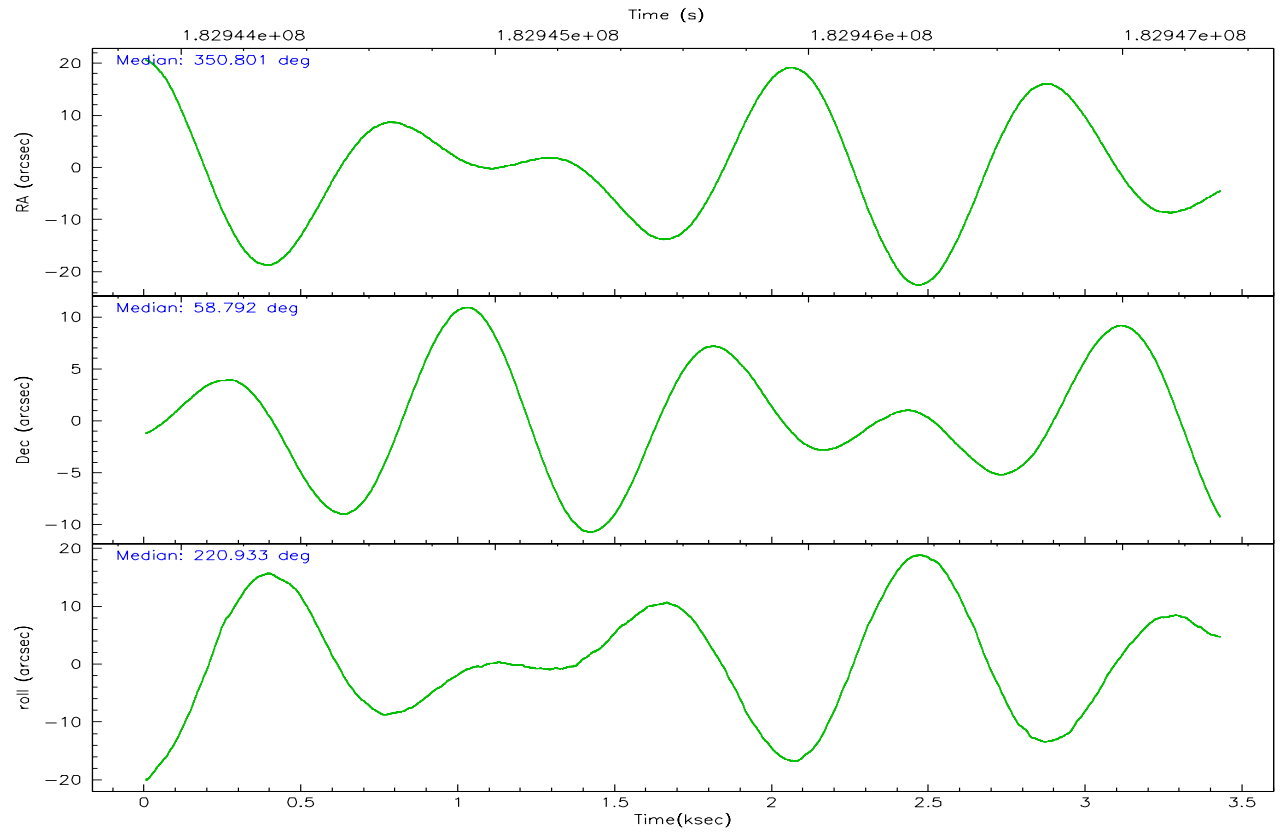
	ccd 4	ccd 5	ccd 6	ccd 7	ccd 8	ccd 9
grade 0 events	0	0	0	81624	0	0
	0%	0%	0%	20%	0%	0%
grade 1 events	0	0	0	1468	0	0
	0%	0%	0%	0%	0%	0%
grade 2 events	0	0	0	101547	0	0
	0%	0%	0%	25%	0%	0%
grade 3 events	0	0	0	38513	0	0
	0%	0%	0%	9%	0%	0%
grade 4 events	0	0	0	37951	0	0
	0%	0%	0%	9%	0%	0%
grade 5 events	0	0	0	6678	0	0
	0%	0%	0%	1%	0%	0%
grade 6 events	0	0	0	92155	0	0
	0%	0%	0%	23%	0%	0%
grade 7 events	0	0	0	34411	0	0
	0%	0%	0%	8%	0%	0%

2.2 Compared Parameters

Parameter	Planned	Actual	Parameter	Planned	Actual
Instrument	ACIS	ACIS	Obspar format version number	6	6
Detector	ACIS-235678	ACIS-456789	Obspar file type	PREDICTED	ACTUAL
Grating	NONE	NONE	Obspar update status	NONE	UPDATED
Data mode	FAINT	FAINT	On-chip summing requested	N	N
Observation mode	POINTING	POINTING	Subarray requested	NONE	NONE
Pointing RA	350.817260	350.8008085743007	Alternating exposures requested	N	N
Pointing Dec	58.817574	58.79175871673336	Primary exposure time	0.000000	3.2
Pointing Roll	220.764897	220.9356076796271			
Window start time	181353664.184000	181353664.184000			
Window stop time	183859264.184000	183859264.184000			
SIM focus pos (mm)	-0.684267	-0.6828225247311905			
SIM defocus (mm)	0	0.001444936568705701			
SIM translation stage pos (mm)	-190.132523	-190.1425803651734			
SIM translation stage offset (mm)	0	0.01005778216563158			
Observation start time	182945214.184000	182943683.25998			
Observation start date	2003-10-19T10:05:50	2003-10-19T09:41:23			
Observation end time	182947319.184000	182947511.12264			
Observation end date	2003-10-19T10:40:55	2003-10-19T10:45:11			
Read mode	TIMED	TIMED			

2.3 Aspect



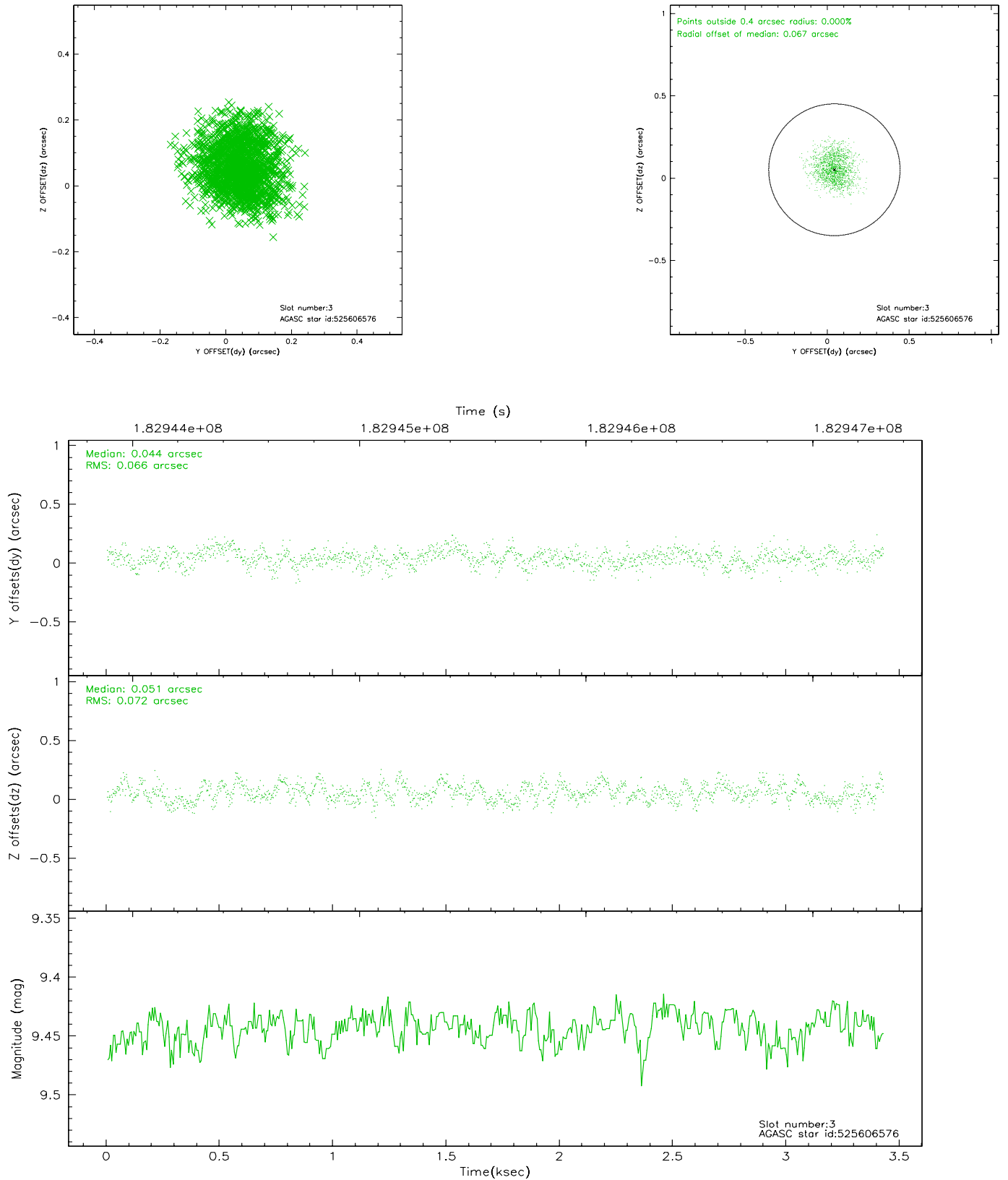


Slot Statistics

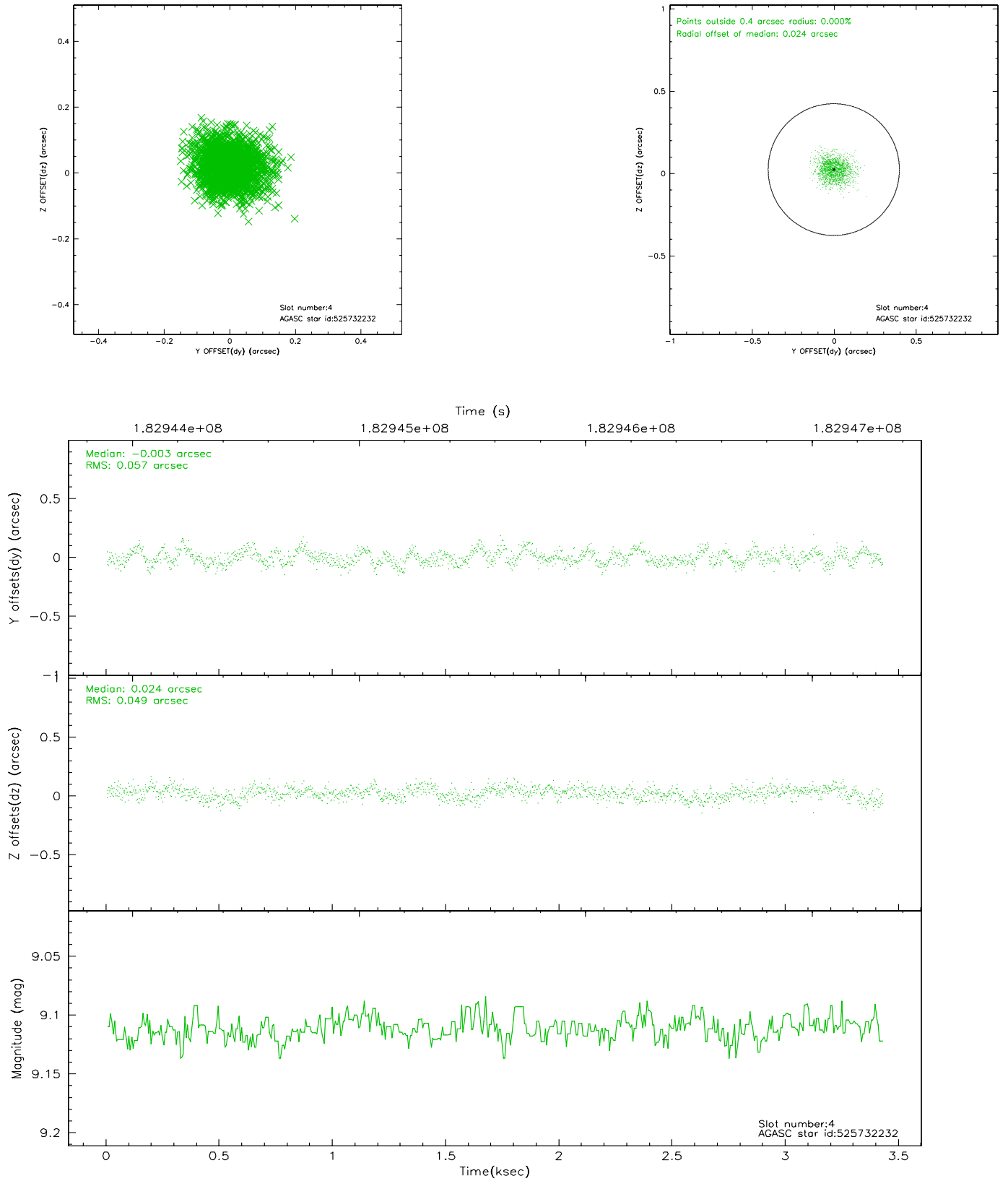
slot	status	id	mag	n_pts	med_dy	med_dz	dr1	dr2	ra	dec	mean_y	mean_z
0	FID	ACIS-S-1	7.17	836	-0.013	-0.021	0.008	0.013	0.000000	0.000000	936.53	-1727.40
1	FID	ACIS-S-4	7.21	836	0.014	0.026	0.007	0.011	0.000000	0.000000	2154.99	174.90
2	FID	ACIS-S-5	7.23	836	-0.027	0.009	0.006	0.009	0.000000	0.000000	-1809.98	170.56
3	GUIDE	525606576	9.44	1672	0.044	0.051	0.105	0.169	349.543555	58.678895	2117.13	-1194.98
4	GUIDE	525732232	9.11	1671	-0.003	0.024	0.079	0.130	351.669550	58.757012	-1067.98	1196.67
5	GUIDE	525735976	8.69	1672	-0.058	-0.034	0.055	0.088	350.142956	58.277622	2231.53	634.96
6	GUIDE	525609504	9.08	1672	-0.109	-0.057	0.074	0.120	349.896632	58.356658	2394.30	112.93
7	GUIDE	525732528	9.36	1670	0.124	0.012	0.080	0.133	351.607241	59.298932	-2234.78	-370.72

2.4 Star Slots

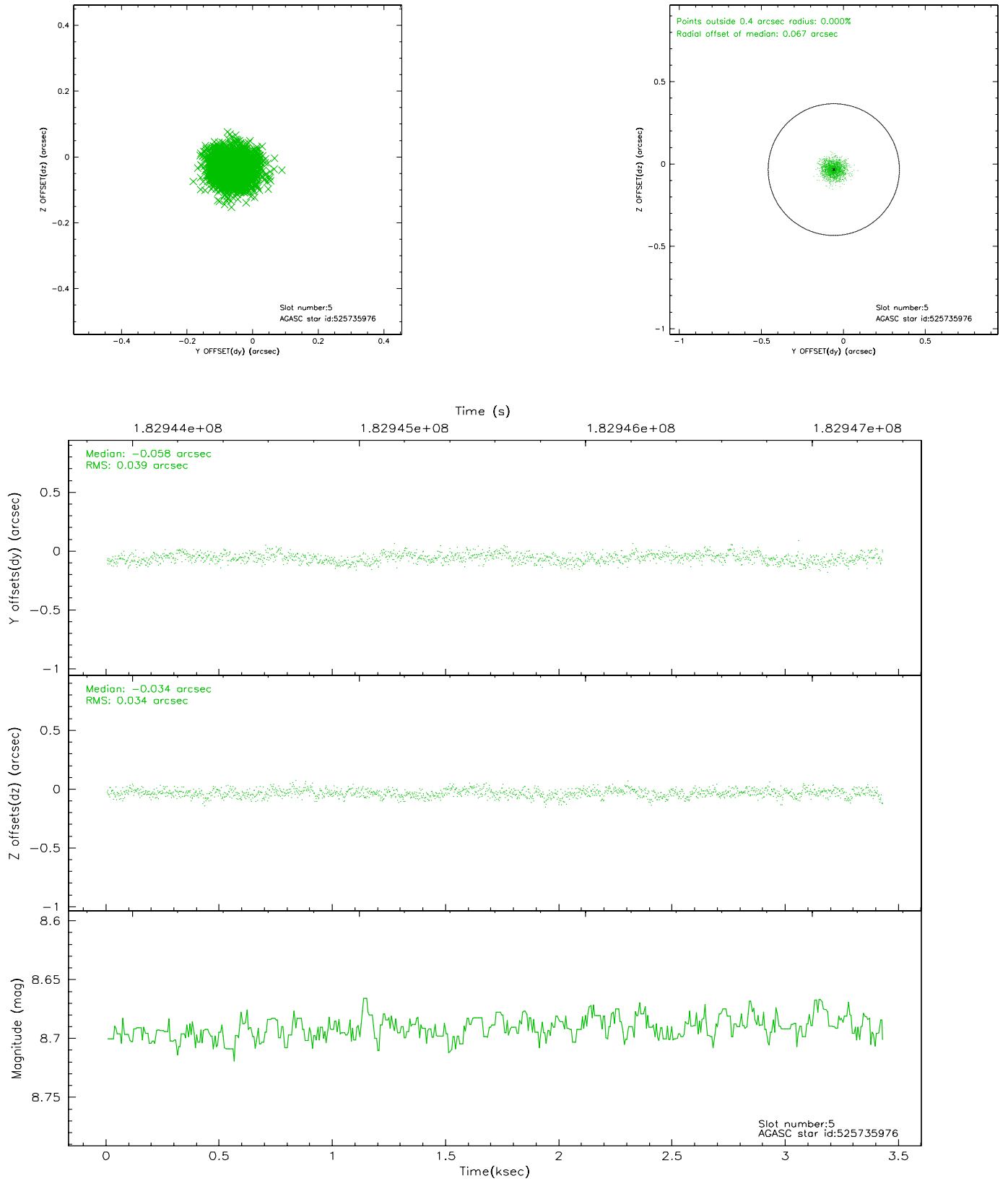
2.4.1 Slot 3



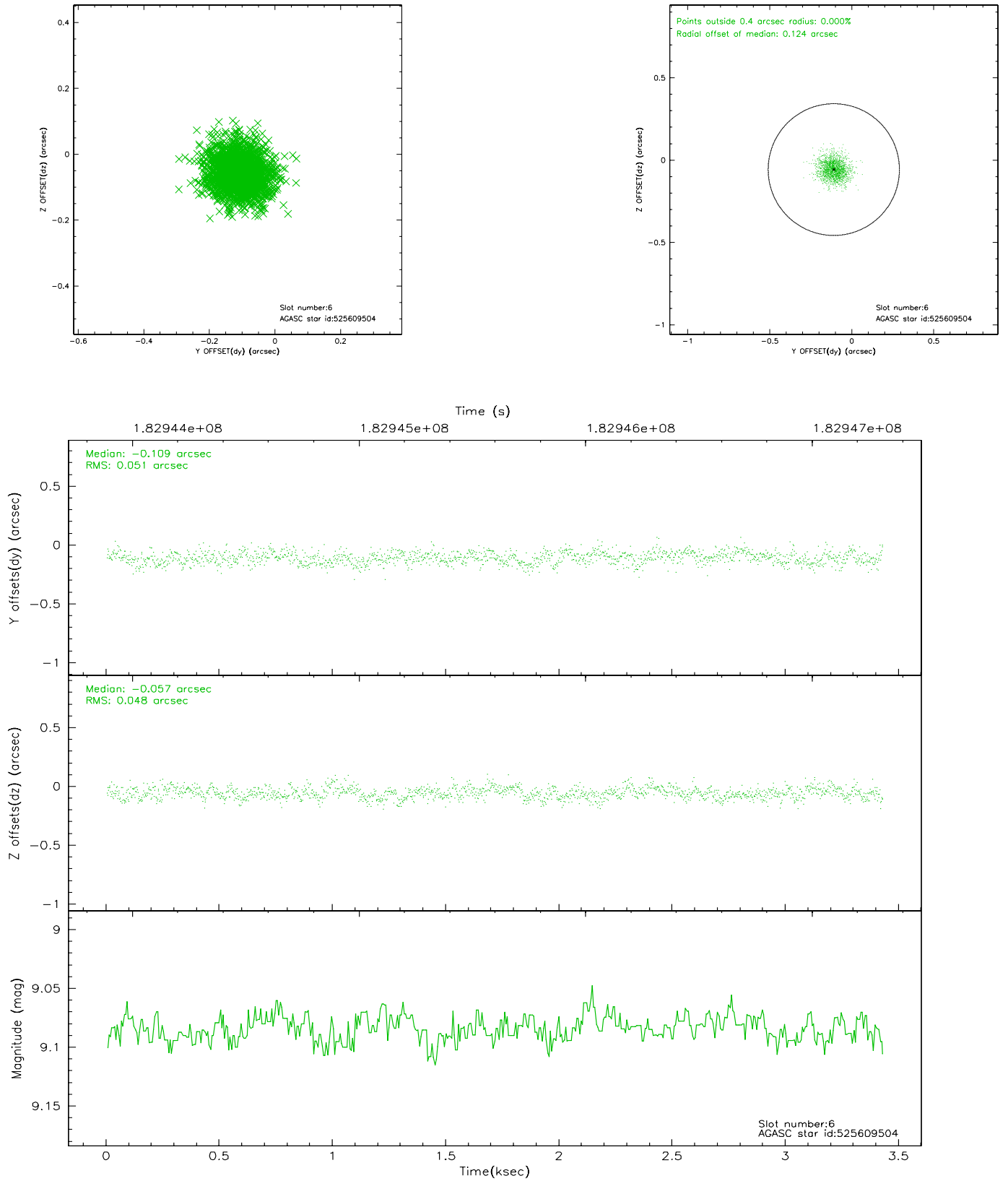
2.4.2 Slot 4



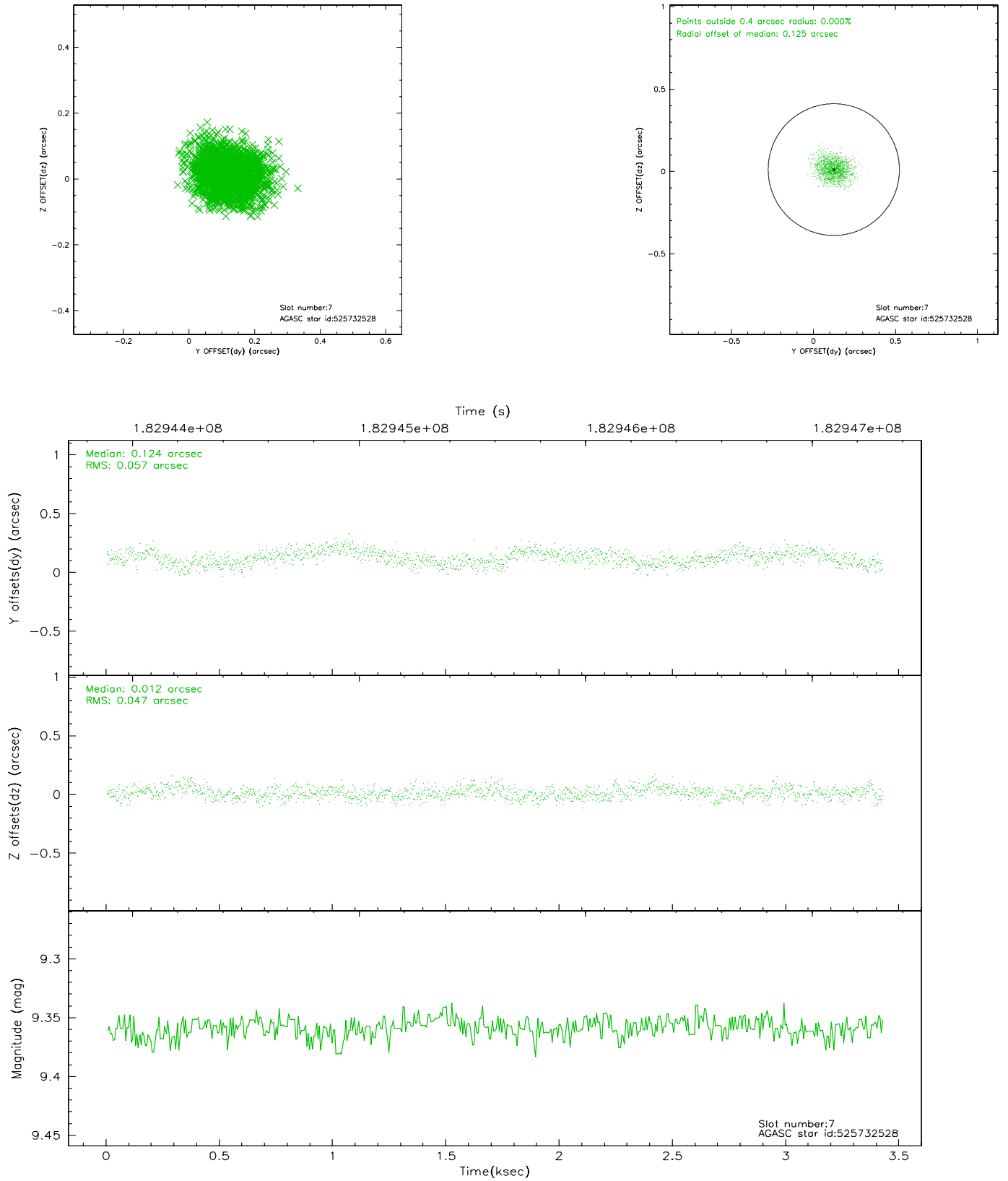
2.4.3 Slot 5



2.4.4 Slot 6

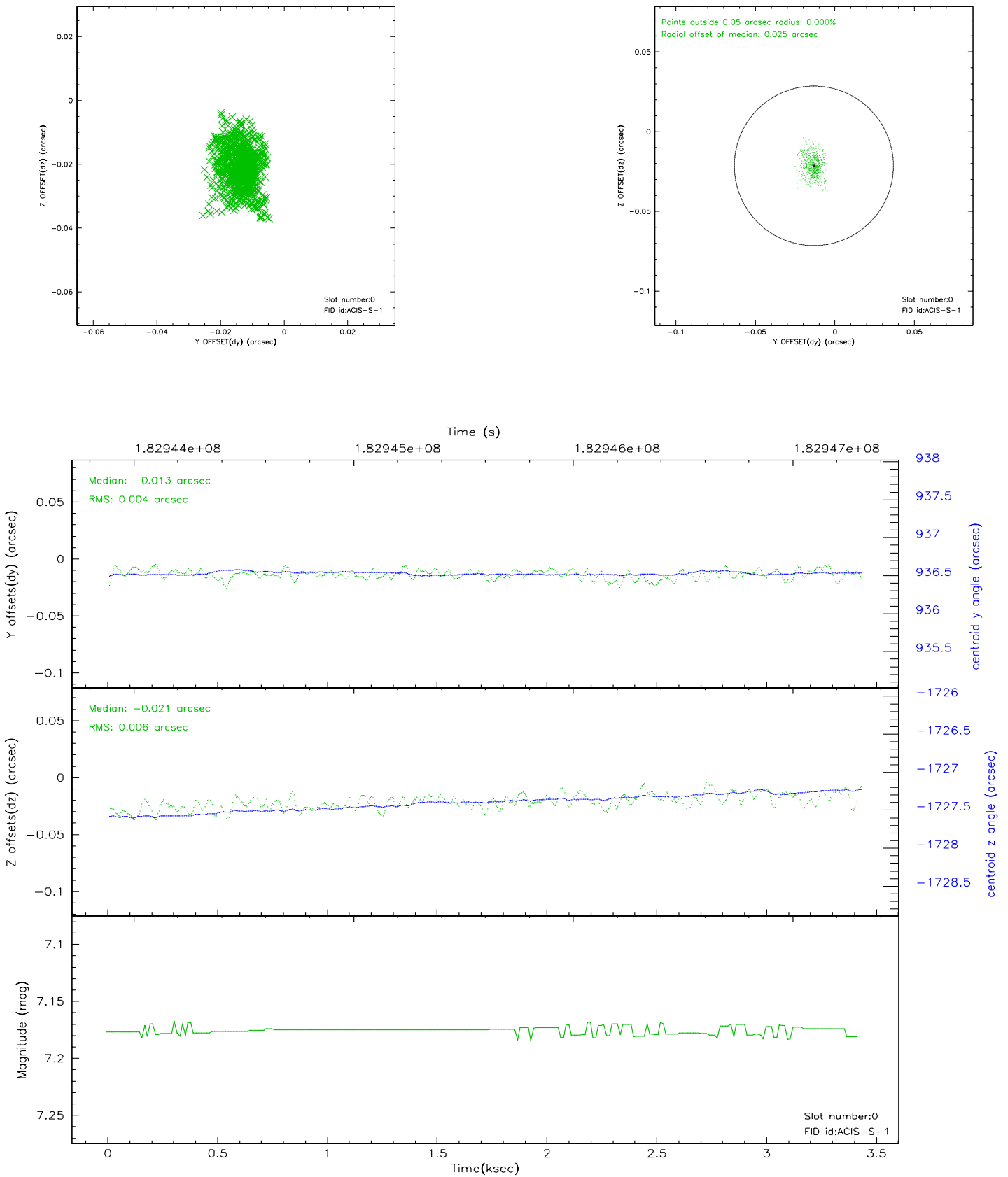


2.4.5 Slot 7

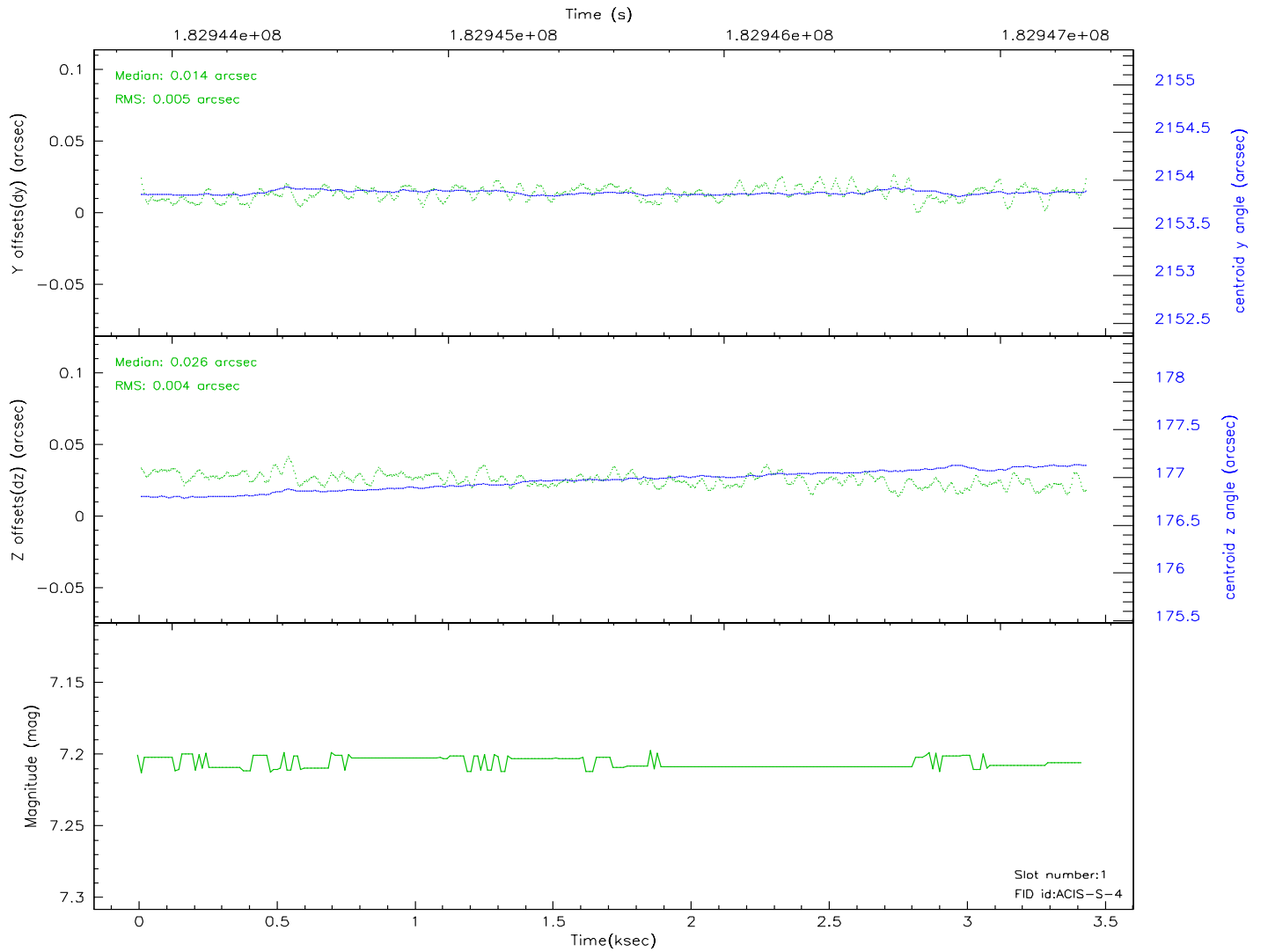
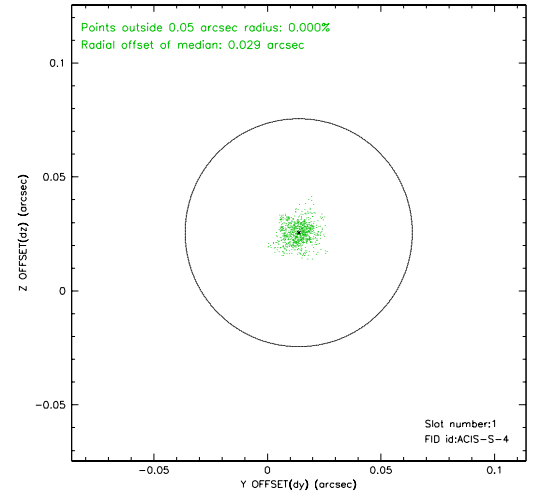
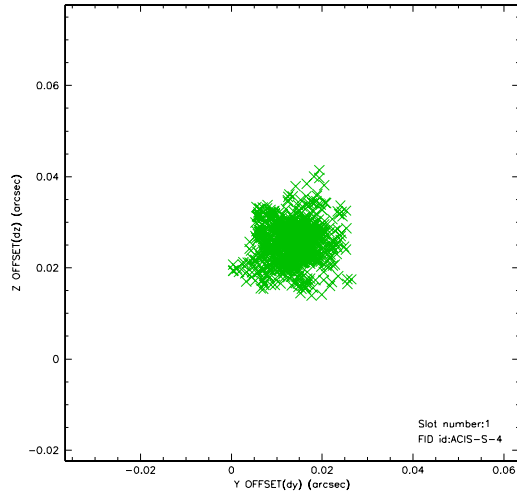


2.5 FID Slots

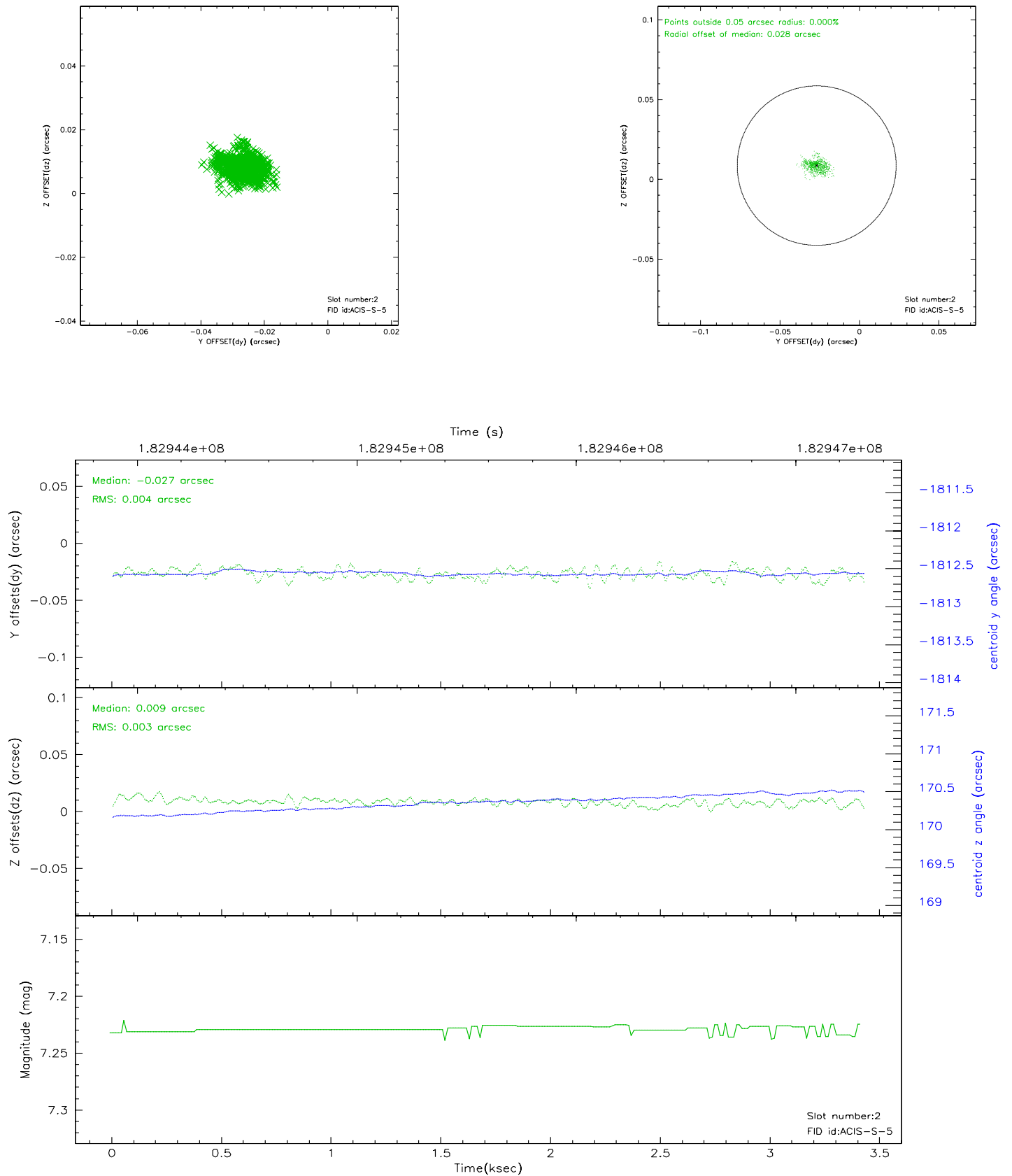
2.5.1 Slot 0



2.5.2 Slot 1



2.5.3 Slot 2



3 Point Sources

A Summary

A.1 Status

V&V Scientist	Joy Nichols
V&V Date (YYYY-MM-DD)	2006.06.29
V&V Edition	1
V&V Disposition and Status	OK
V&V Charge Time	1.163

A.2 Comments

On`time` values for chips other than S3 are fictitious since only S3 read.