

# V&V Reference Report

## L2 ASCDS Version : 7.6.8

Observation 3624 - L2 Version 001  
Chandra X-Ray Center

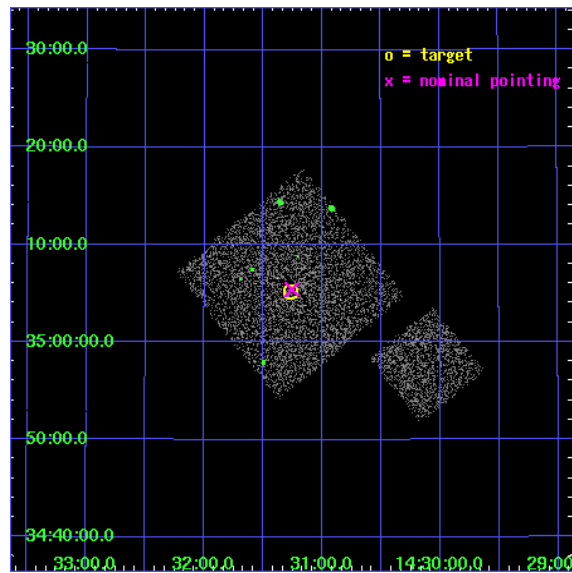
L2 Processing Date : Jul 29 2006

## Contents

<b>1</b>	<b>Front</b>	<b>2</b>
<b>2</b>	<b>OBI</b>	<b>3</b>
2.1	OBI . . . . .	3
2.1.1	Images . . . . .	3
2.1.2	Bias . . . . .	3
2.1.3	Parameters . . . . .	4
2.1.4	Events . . . . .	4
2.2	Compared Parameters . . . . .	5
2.3	Aspect . . . . .	6
2.4	Star Slots . . . . .	9
2.4.1	Slot 3 . . . . .	9
2.4.2	Slot 4 . . . . .	10
2.4.3	Slot 5 . . . . .	11
2.4.4	Slot 6 . . . . .	12
2.4.5	Slot 7 . . . . .	13
2.5	FID Slots . . . . .	14
2.5.1	Slot 0 . . . . .	14
2.5.2	Slot 1 . . . . .	15
2.5.3	Slot 2 . . . . .	16
<b>3</b>	<b>Point Sources</b>	<b>17</b>
<b>A</b>	<b>Summary</b>	<b>18</b>
A.1	Status . . . . .	18
A.2	Comments . . . . .	18

# 1 Front

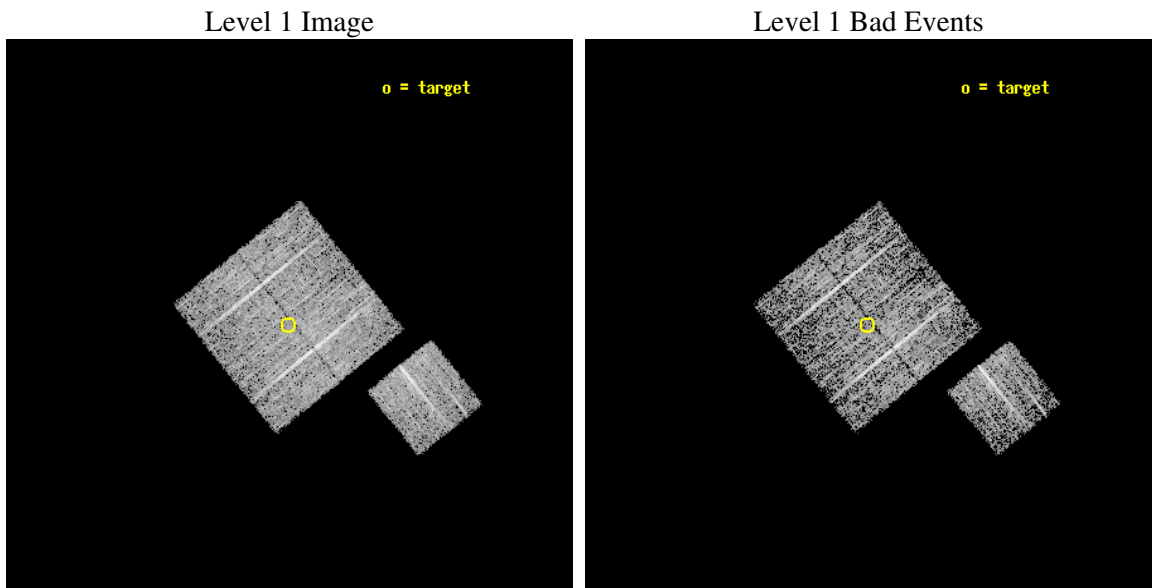
seq_num	900224
obs_id	3624
title	CHANDRA LARGE SCALE SURVEY OF THE NOAO BOOTES DEEP FIELD
observer	Dr. Stephen Murray
object	NOAO FIELD F5
dtcycle	0
cycle	P
ra_targ	217.816997
dec_targ	35.08647
ra_nom	217.81432638463
dec_nom	35.090588820996
roll_nom	141.01023193083
revision	2
ontime	4674.7999910116
livetime	4613.7202875914
ontime0	4674.7999910116
ontime1	4674.7999910116
ontime2	4674.7999910116
ontime3	4674.7999910116
ontime6	4674.7999910116
l2events	9586



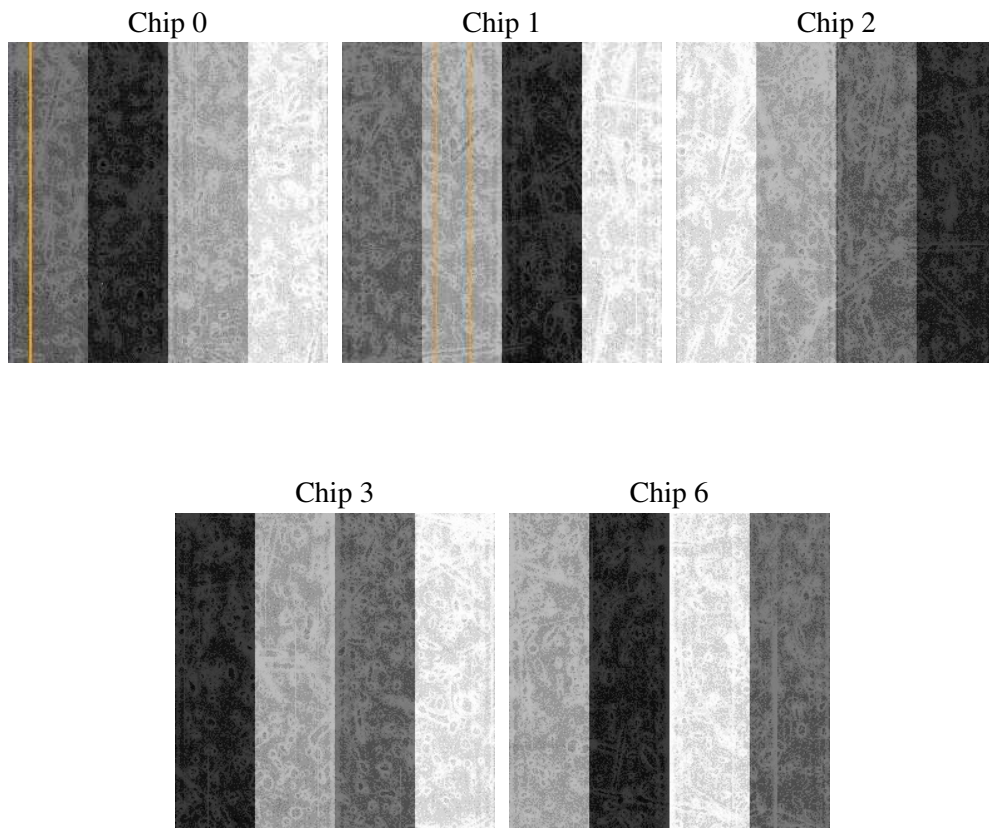
## 2 OBI

### 2.1 OBI

#### 2.1.1 Images



#### 2.1.2 Bias



### 2.1.3 Parameters

obi_num	1
ascdsver	7.6.8
caldbver	3.2.2
date	2006-07-29T20:41:11
revision	2

sched_exp_time	4900.000000
ontime	4680.1048672497
ontime0	4680.1048473418
ontime1	4680.1048473418
ontime2	4680.1048473418
ontime3	4680.1048672497
ontime6	4680.1048672497
llevents	114726

### 2.1.4 Events

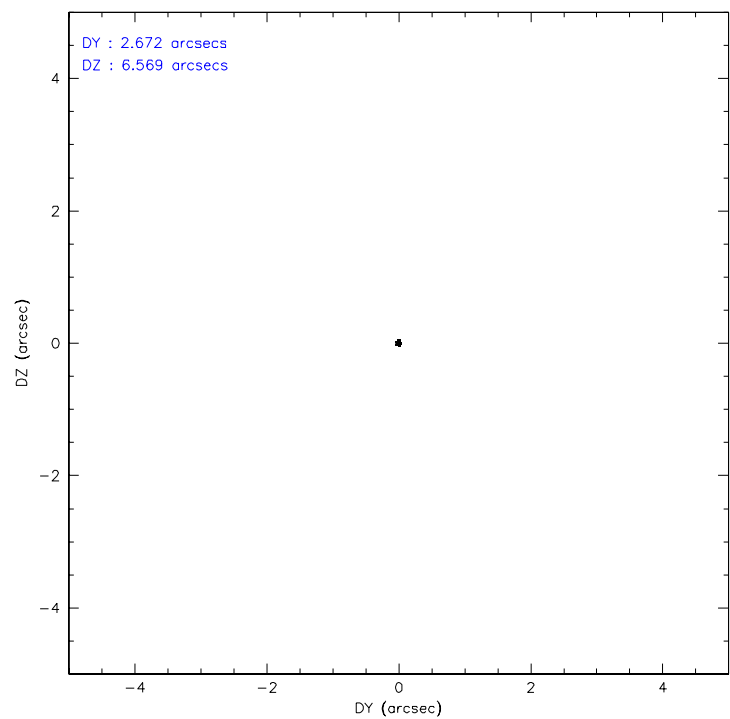
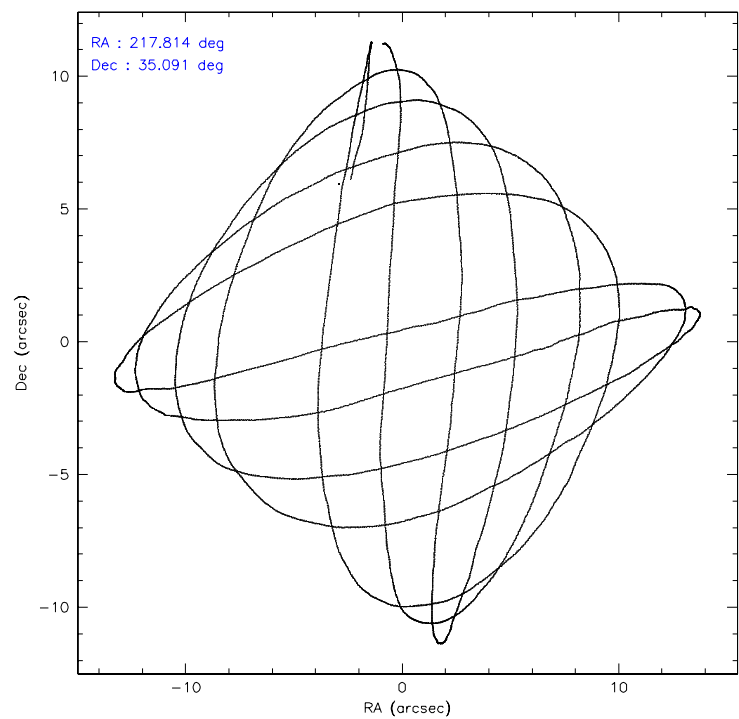
	ccd 0	ccd 1	ccd 2	ccd 3	ccd 6
level 1 events	22246	21429	24890	23205	22956
rejected events	19895	18900	22510	20985	20672
rejected %	89%	88%	90%	90%	90%

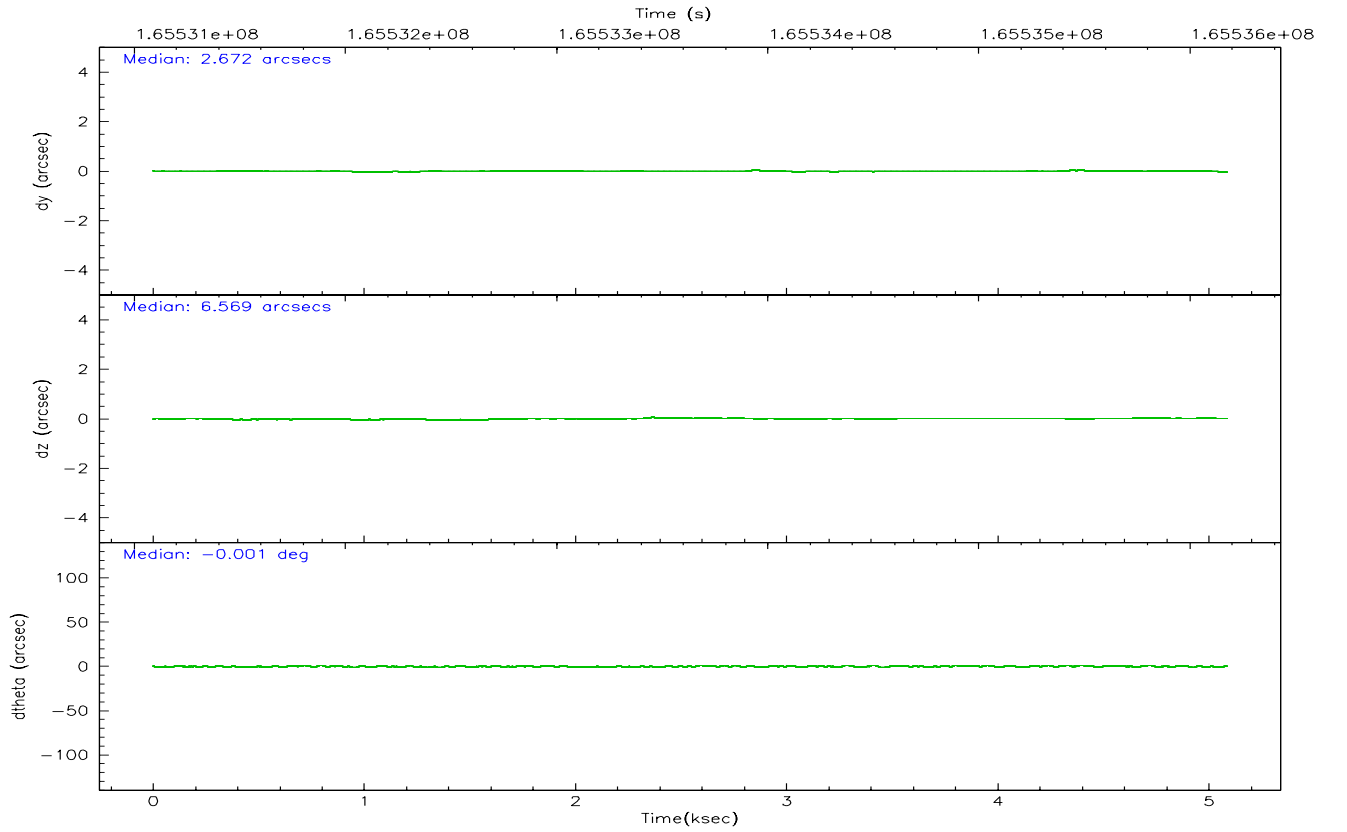
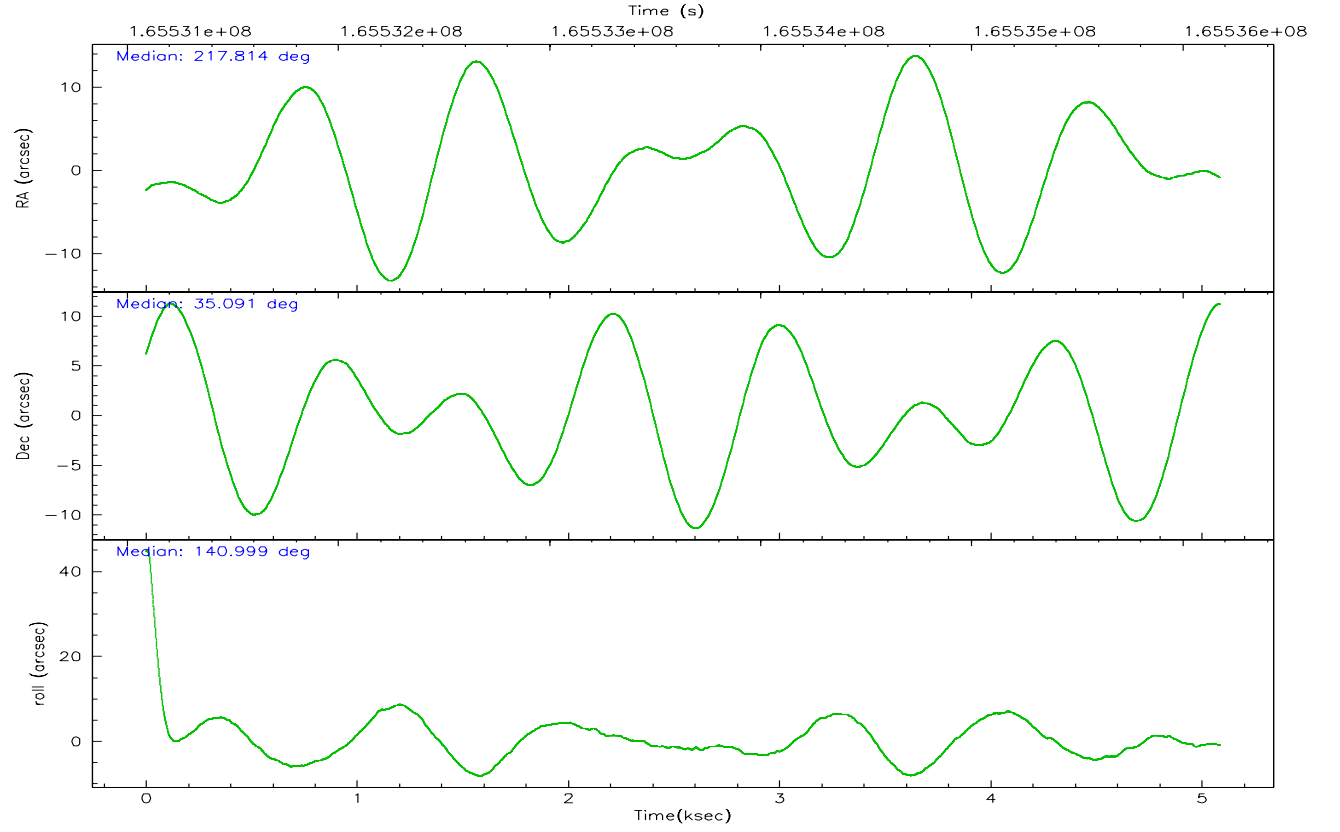
	ccd 0	ccd 1	ccd 2	ccd 3	ccd 6
grade 0 events	868	925	919	815	844
	3%	4%	3%	3%	3%
grade 1 events	11	5	13	14	8
	0%	0%	0%	0%	0%
grade 2 events	566	540	560	461	485
	2%	2%	2%	1%	2%
grade 3 events	251	307	267	243	272
	1%	1%	1%	1%	1%
grade 4 events	230	288	236	287	251
	1%	1%	0%	1%	1%
grade 5 events	623	785	624	754	762
	2%	3%	2%	3%	3%
grade 6 events	437	469	403	414	433
	1%	2%	1%	1%	1%
grade 7 events	19260	18110	21868	20217	19901
	86%	84%	87%	87%	86%

## 2.2 Compared Parameters

Parameter	Planned	Actual	Parameter	Planned	Actual
Instrument	ACIS	ACIS	Obspar format version number	6	6
Detector	ACIS-01236	ACIS-01236	Obspar file type	PREDICTED	ACTUAL
Grating	NONE	NONE	Obspar update status	NONE	UPDATED
Data mode	VFAINT	VFAINT	On-chip summing requested	N	N
Observation mode	POINTING	POINTING	Subarray requested	NONE	NONE
Pointing RA	217.847405	217.8143263846295	Alternating exposures requested	N	N
Pointing Dec	35.086394	35.090588820996	Primary exposure time	0.000000	3.1
Pointing Roll	140.782520	141.0102319308256			
SIM focus pos (mm)	-0.782348	-0.7809083437167272			
SIM defocus (mm)	0	0.001439871863259334			
SIM translation stage pos (mm)	-233.592463	-233.5874344608287			
SIM translation stage offset (mm)	0	-0.005018542100998502			
Observation start time	165531274.184000	165530897.95586			
Observation start date	2003-03-31T20:53:30	2003-03-31T20:48:17			
Observation end time	165536174.184000	165536307.90608			
Observation end date	2003-03-31T22:15:10	2003-03-31T22:18:27			
Read mode	TIMED	TIMED			

## 2.3 Aspect





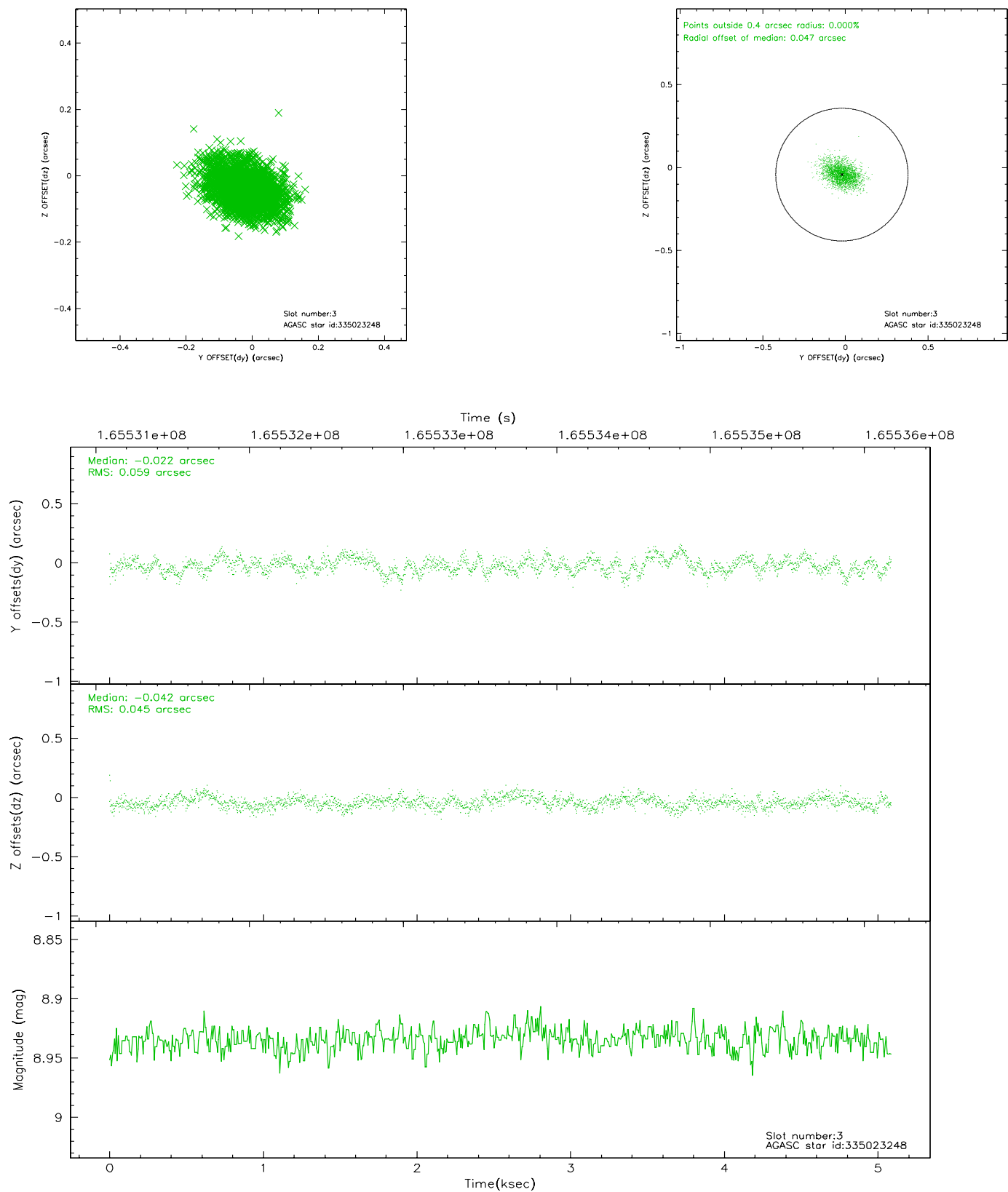
### Slot Statistics

slot	status	id	mag	n_pts	med_dy	med_dz	dr1	dr2	ra	dec	mean_y	mean_z
0	FID	ACIS-I-1	7.25	1241	-0.007	0.021	0.006	0.010	0.000000	0.000000	937.11	-829.95
1	FID	ACIS-I-5	7.24	1241	-0.053	0.044	0.006	0.010	0.000000	0.000000	-1810.34	1067.02
2	FID	ACIS-I-6	7.26	1241	-0.031	0.006	0.007	0.011	0.000000	0.000000	401.38	1712.80
3	GUIDE	335023248	8.93	2481	-0.022	-0.042	0.078	0.131	217.634832	34.944512	163.53	792.03
4	GUIDE	335417968	9.39	2476	0.103	0.006	0.094	0.156	217.358149	35.055285	1048.70	996.43
5	GUIDE	335421696	8.96	2481	-0.109	0.150	0.074	0.116	218.045699	35.772449	1114.04	-2279.16
6	GUIDE	335422272	9.47	2470	0.064	0.094	0.096	0.154	217.586135	35.522660	1587.67	-733.99
7	GUIDE	335028336	9.48	2479	-0.034	-0.211	0.107	0.164	217.189840	34.665629	555.16	2399.47

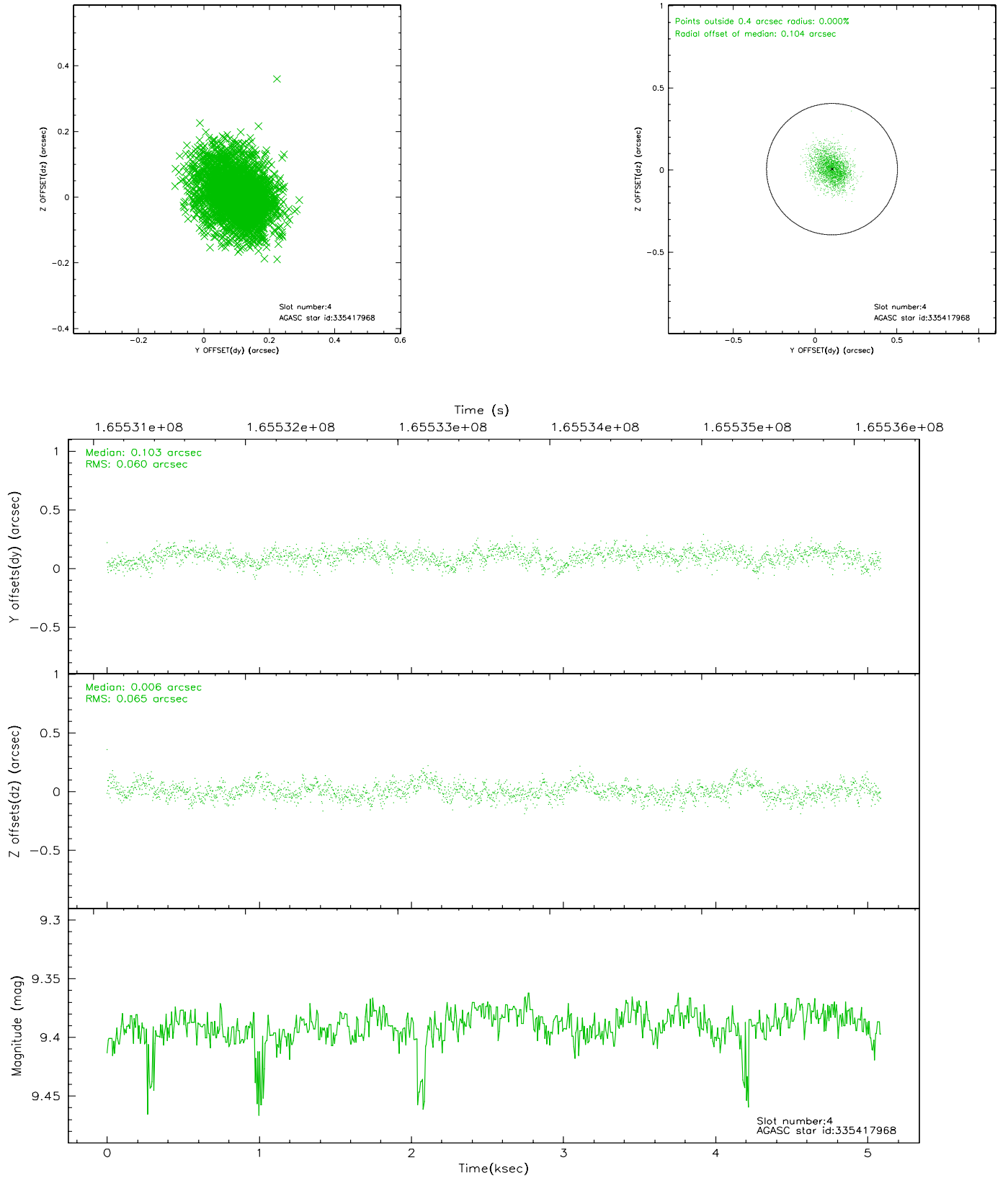


## 2.4 Star Slots

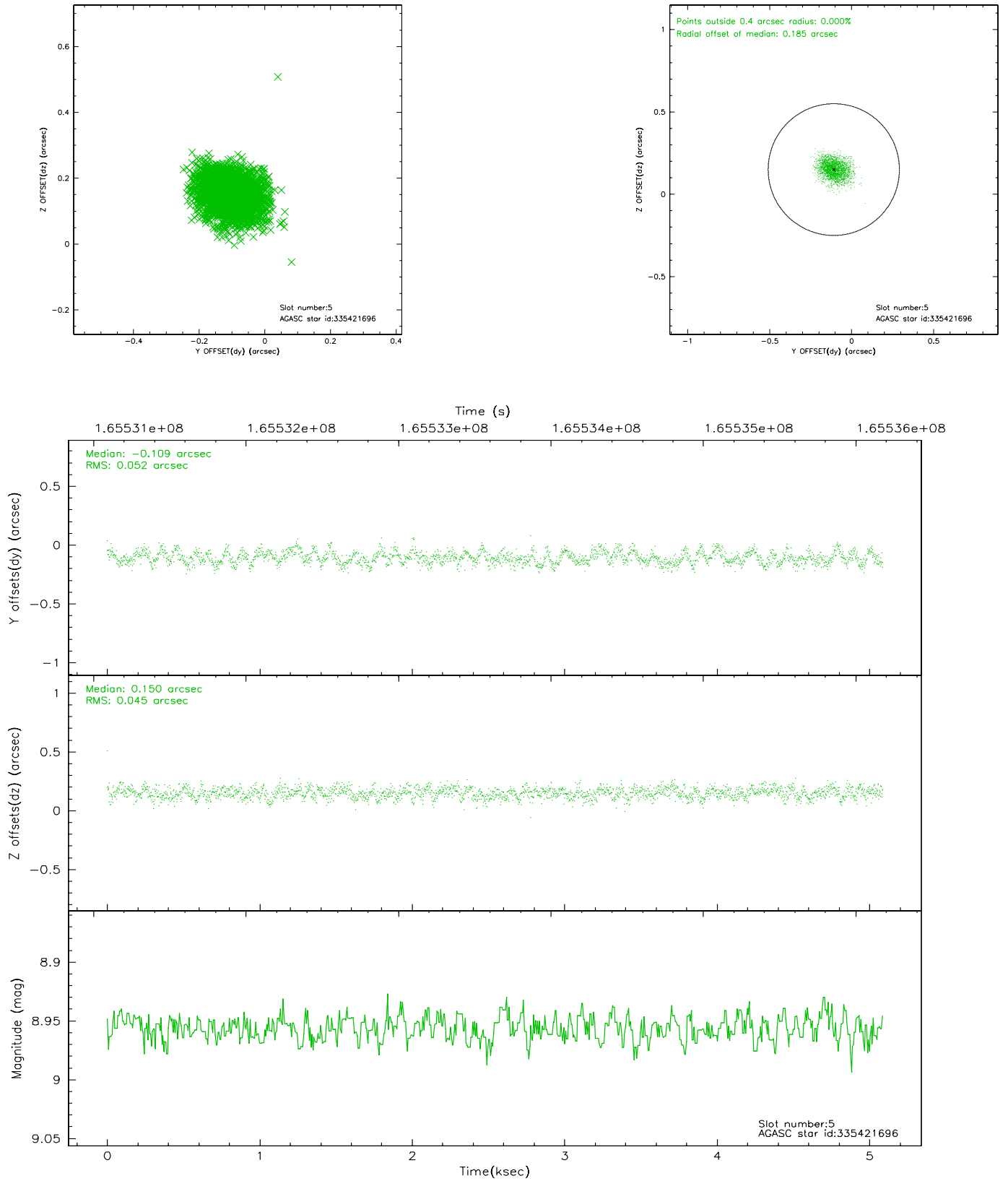
### 2.4.1 Slot 3



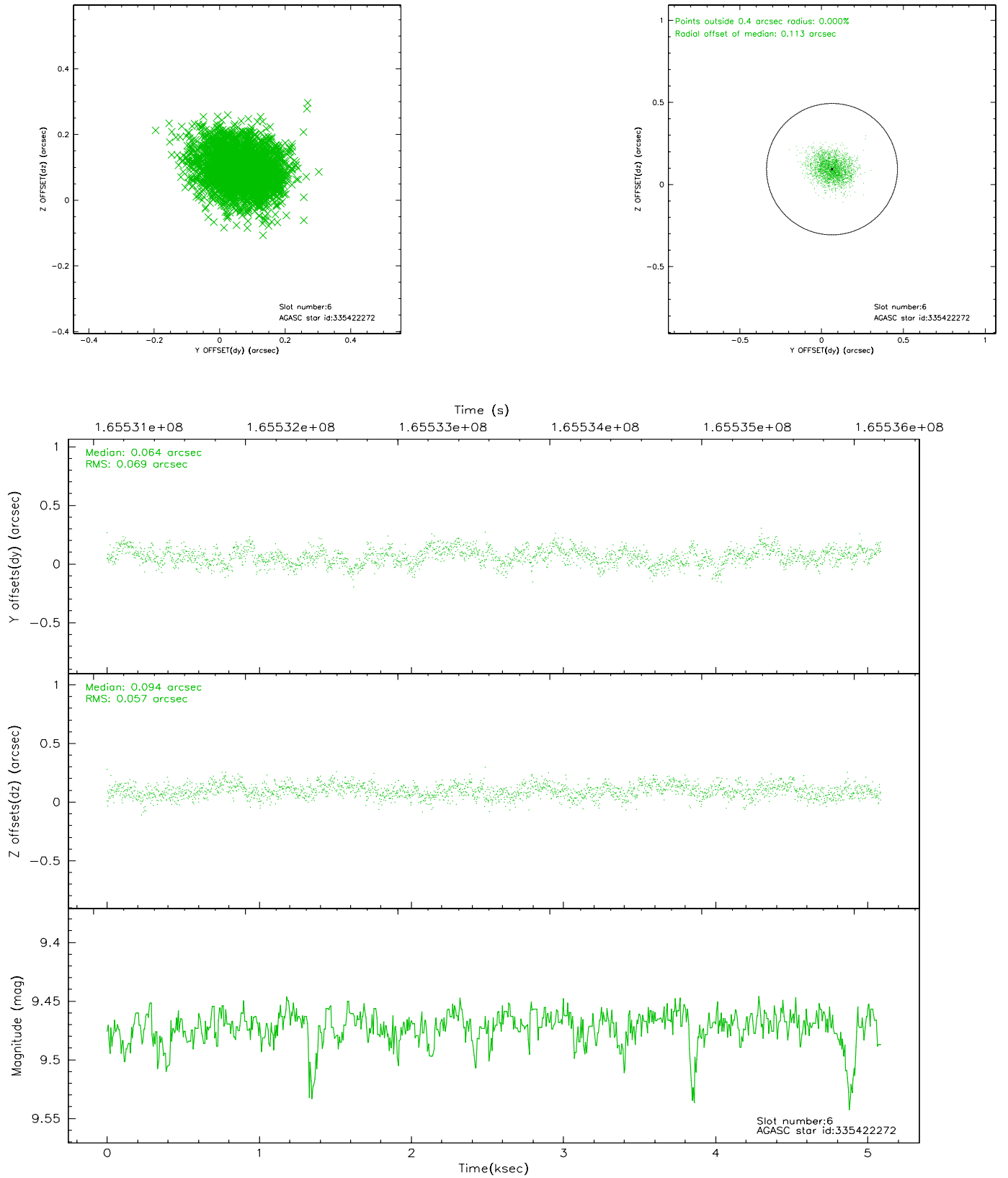
## 2.4.2 Slot 4



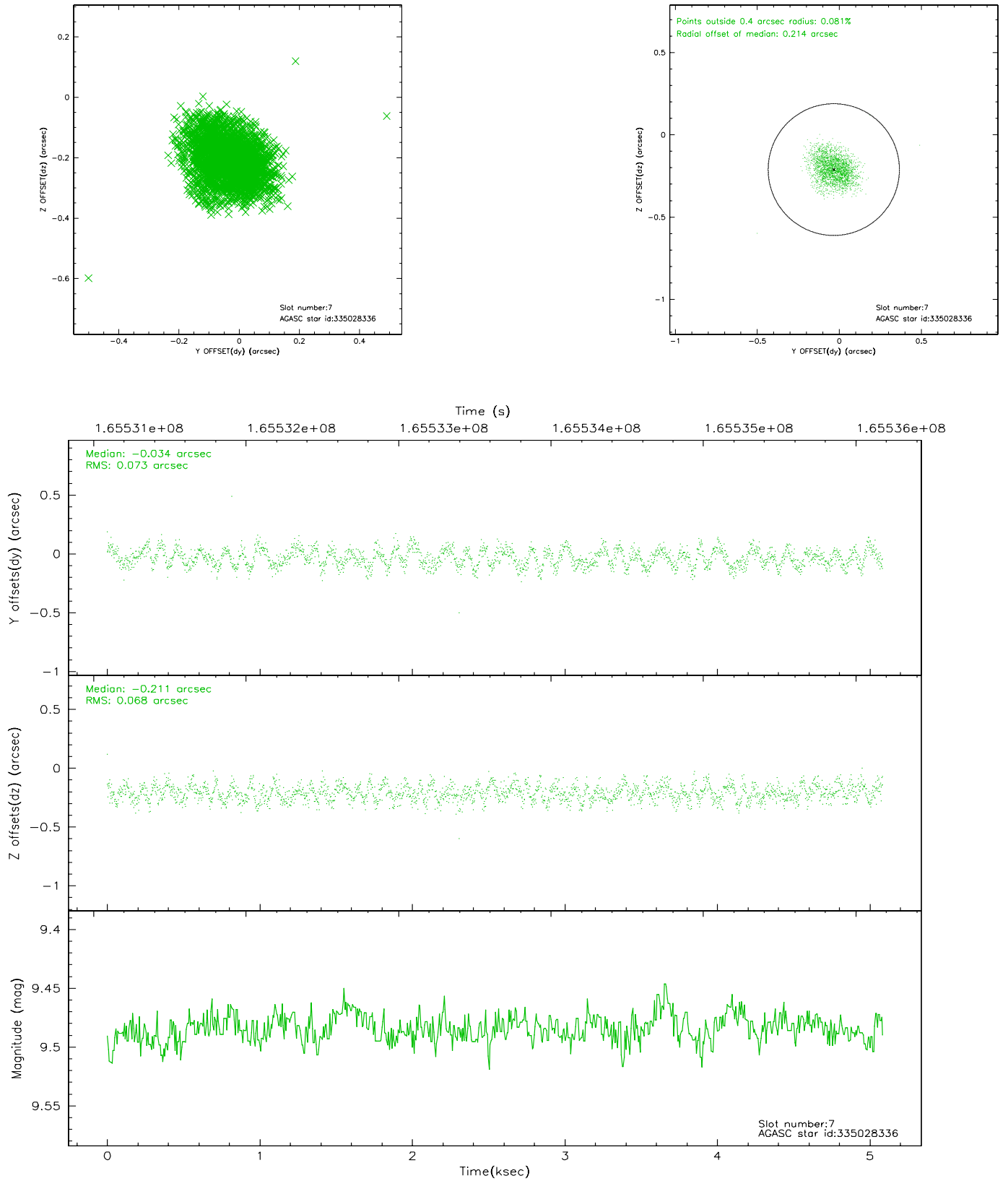
### 2.4.3 Slot 5



## 2.4.4 Slot 6

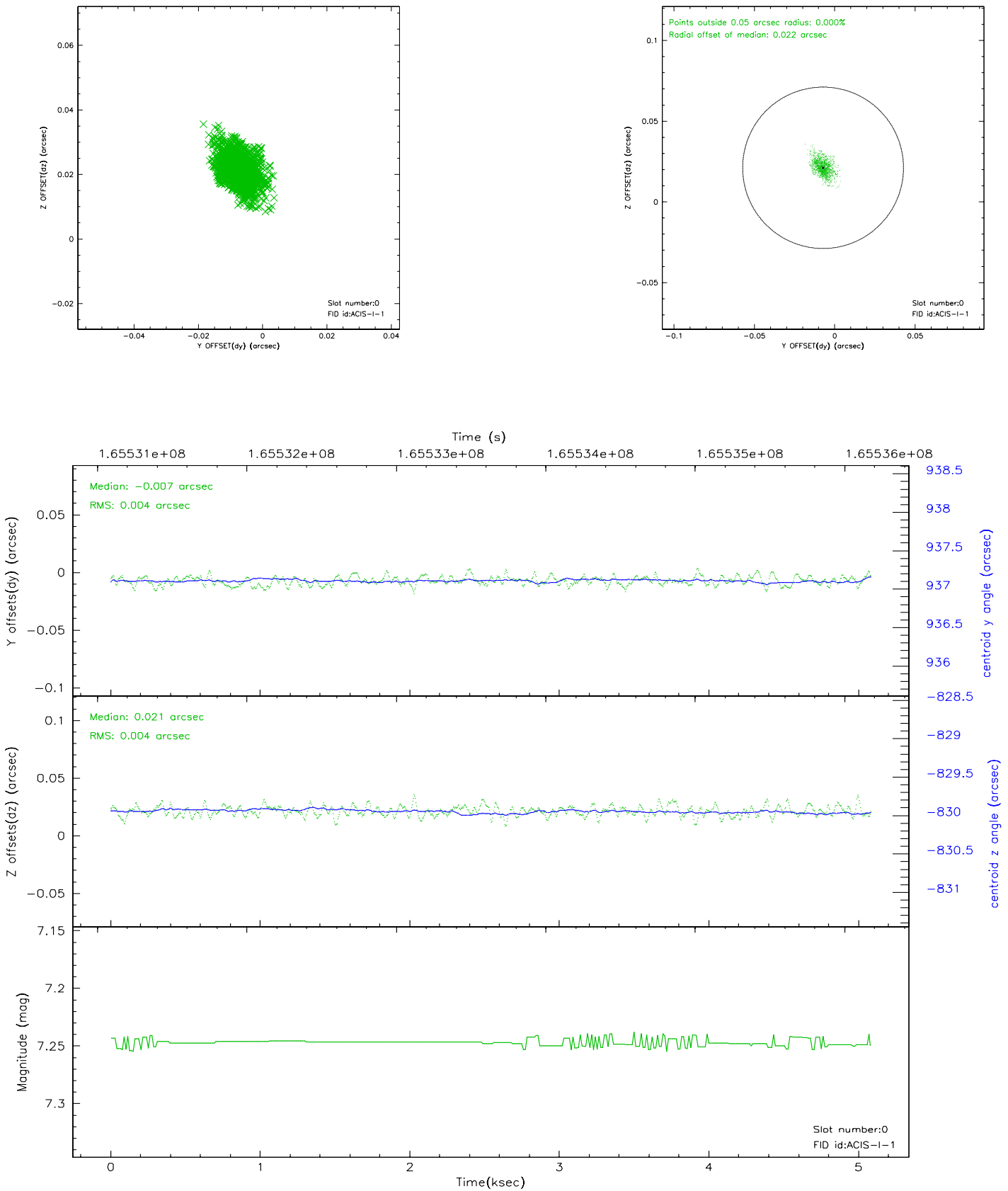


## 2.4.5 Slot 7

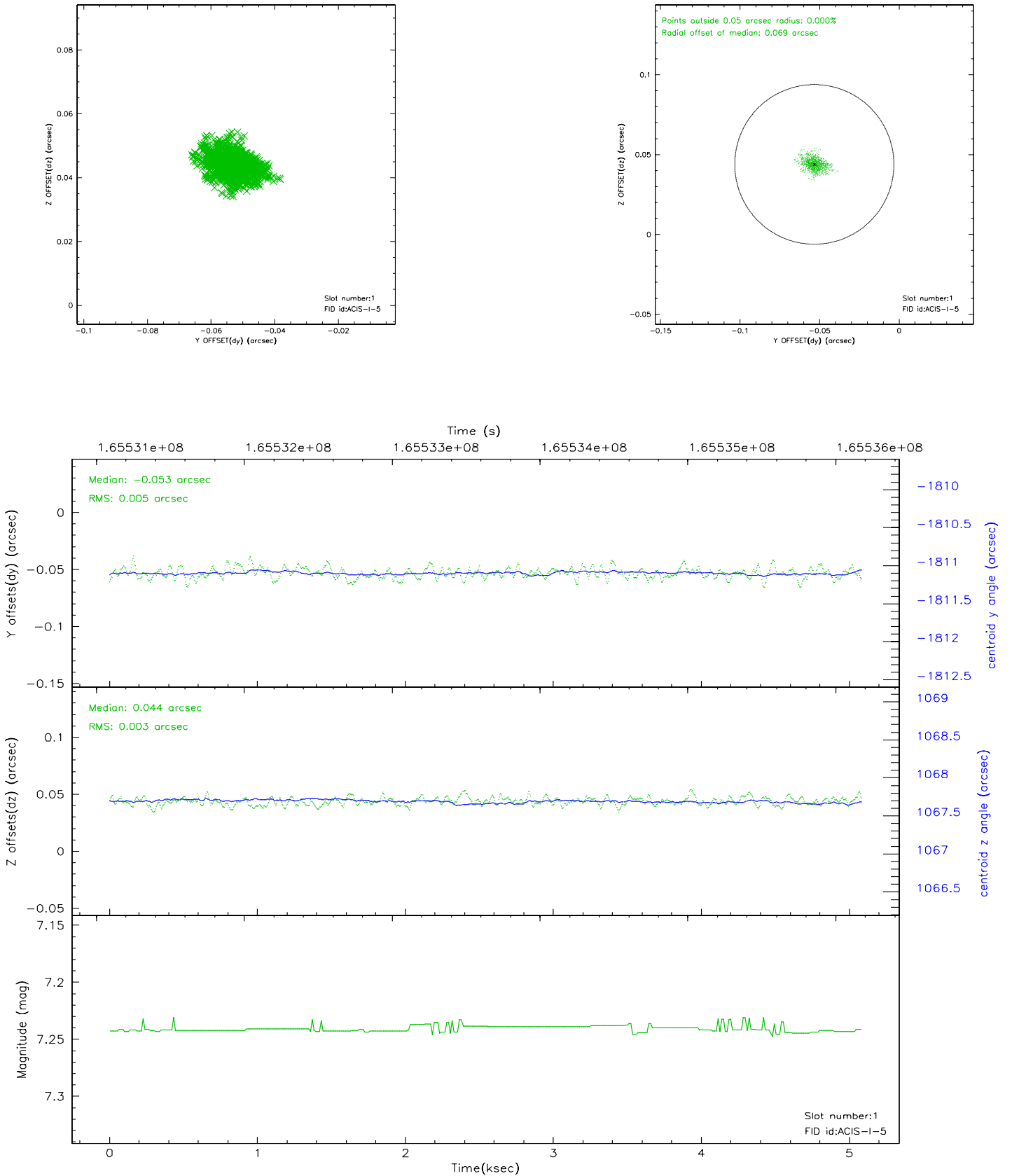


## 2.5 FID Slots

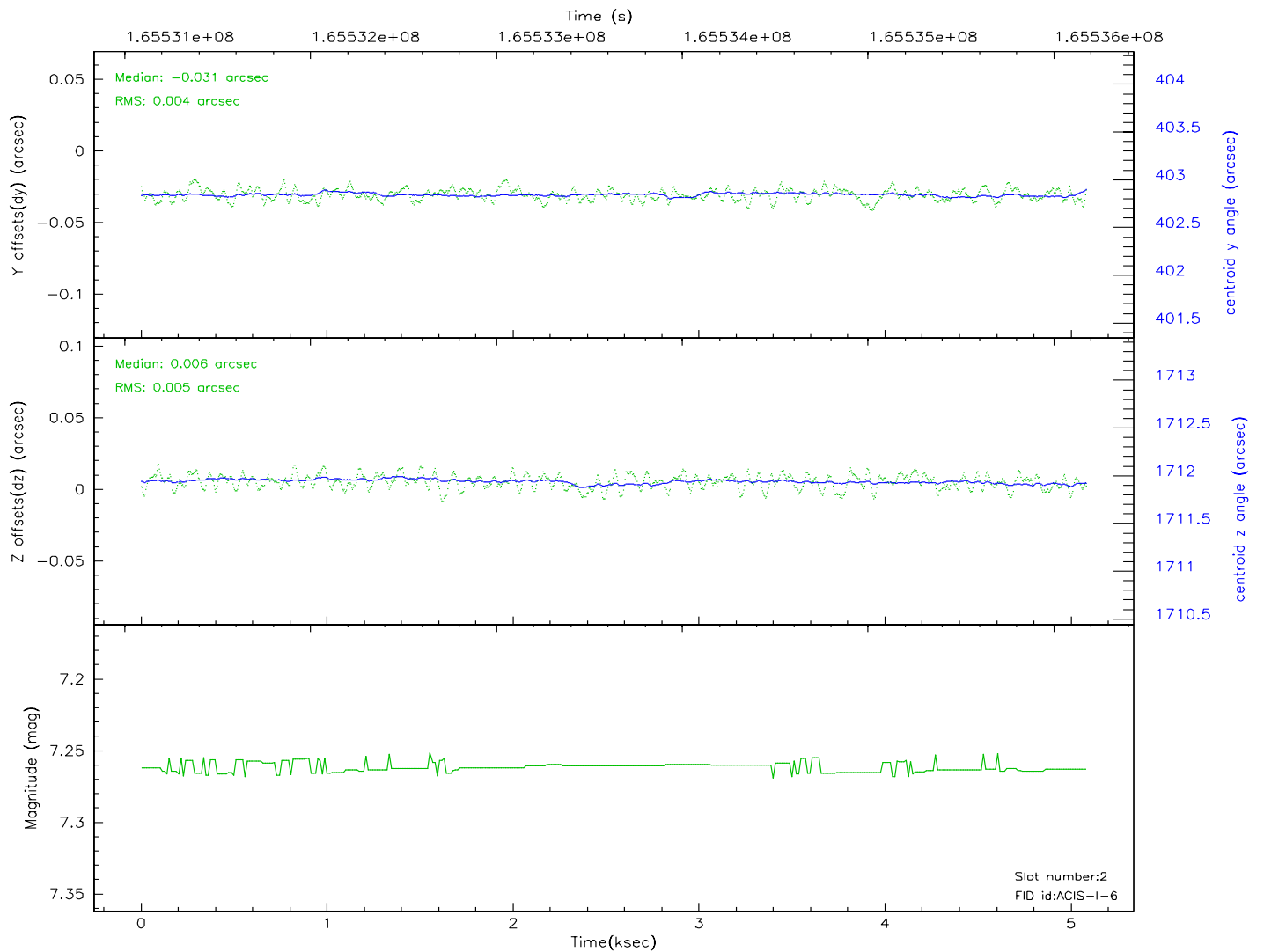
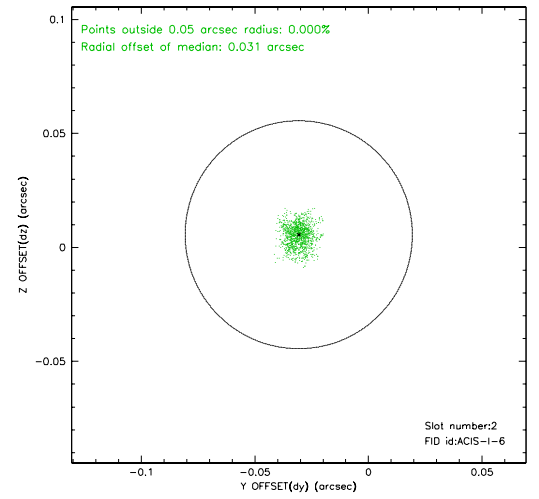
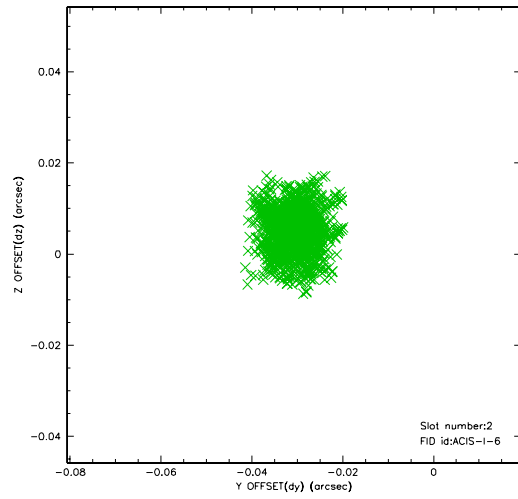
### 2.5.1 Slot 0



## 2.5.2 Slot 1

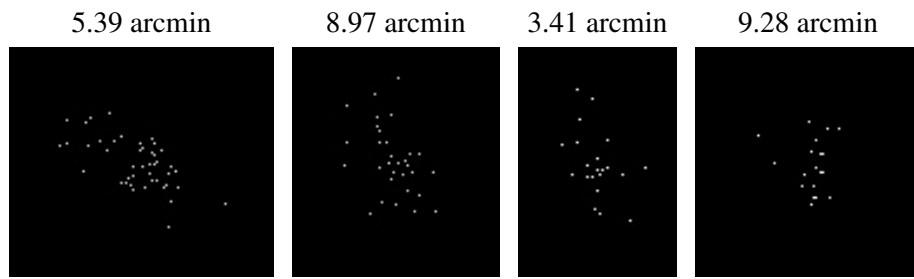


### 2.5.3 Slot 2





### 3 Point Sources



## A Summary

### A.1 Status

V&V Scientist	Jen Lauer
V&V Date (YYYY-MM-DD)	2006.07.30
V&V Edition	1
V&V Disposition and Status	OK
V&V Charge Time	4.675

### A.2 Comments