

V&V Reference Report

L2 ASCDS Version : 7.6.8

Observation 3544 - L2 Version 001
Chandra X-Ray Center

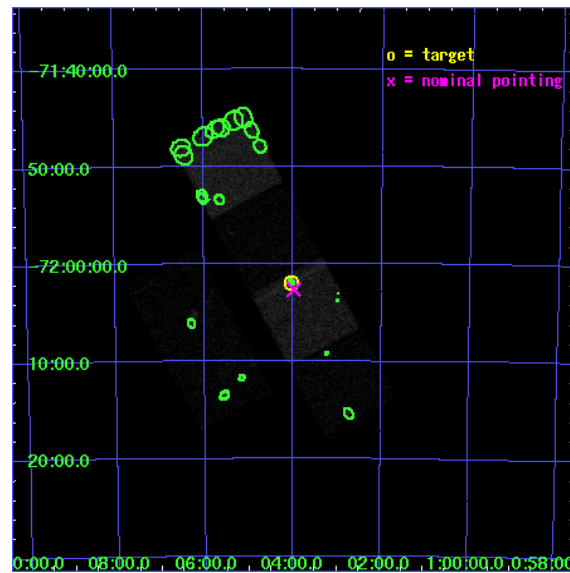
L2 Processing Date : Jul 11 2006

Contents

1	Front	2
2	OBI	3
2.1	OBI	3
2.1.1	Images	3
2.1.2	Bias	3
2.1.3	Parameters	4
2.1.4	Events	4
2.2	Compared Parameters	5
2.3	Aspect	6
2.4	Star Slots	9
2.4.1	Slot 3	9
2.4.2	Slot 4	10
2.4.3	Slot 5	11
2.4.4	Slot 6	12
2.4.5	Slot 7	13
2.5	FID Slots	14
2.5.1	Slot 0	14
2.5.2	Slot 1	15
2.5.3	Slot 2	16
3	Point Sources	17
A	Summary	18
A.1	Status	18
A.2	Comments	18

1 Front

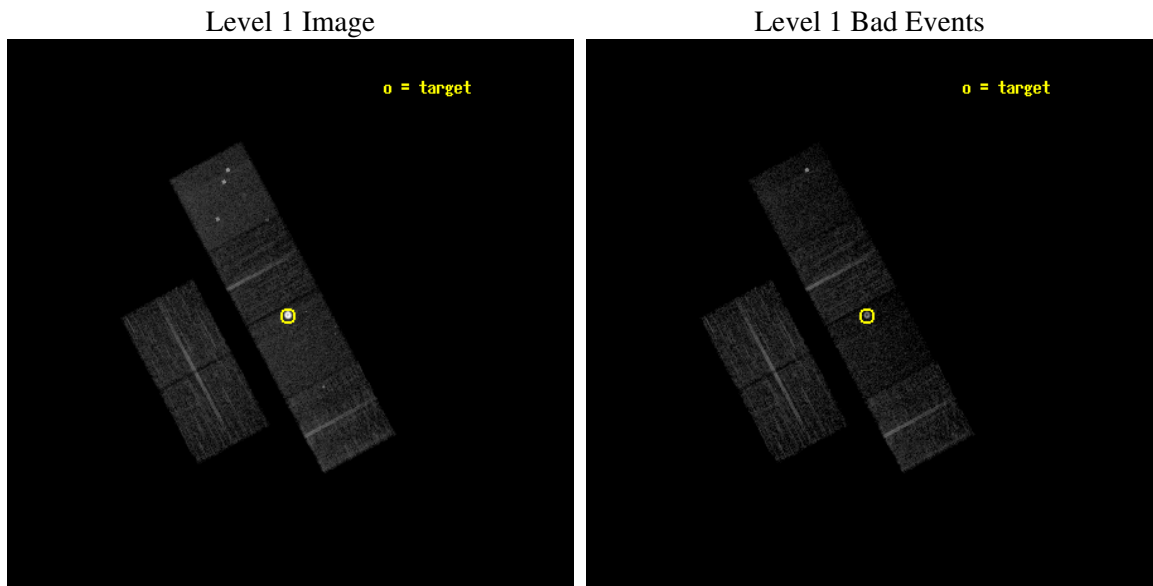
seq_num	590299
obs_id	3544
title	AO4B ACIS-S CALIBRATION OBSERVATIONS OF E0102-72
observer	Dr. CXC Calibration
object	E0102-72[S3,-120,1,0,0]
dtcycle	0
cycle	P
ra_targ	16.01
dec_targ	-72.032028
ra_nom	15.995163447097
dec_nom	-72.044015253648
roll_nom	61.849692566944
revision	2
ontime	7961.5999703407
livetime	7860.7853976163
ontime2	7961.5999703407
ontime3	7961.5999703407
ontime5	7961.5999703407
ontime6	7961.5999703407
ontime7	7961.5999703407
ontime8	7961.5999703407
l2events	109990



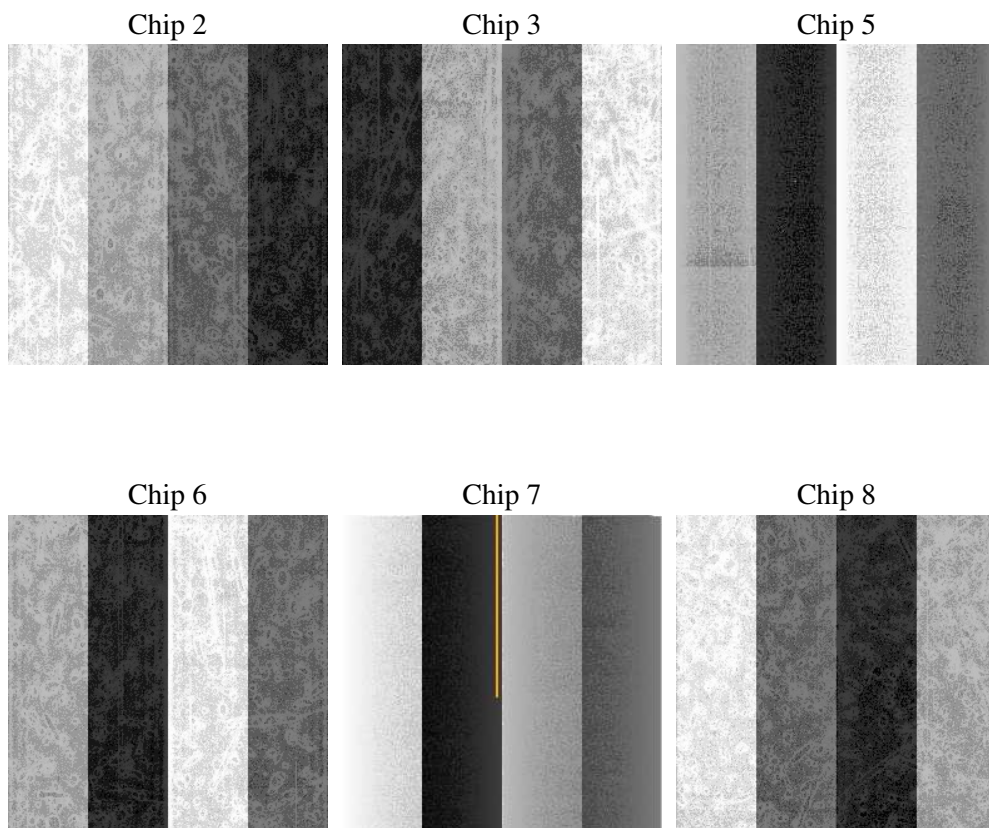
2 OBI

2.1 OBI

2.1.1 Images



2.1.2 Bias



2.1.3 Parameters

obi_num	0
ascdsver	7.6.8
caldbver	3.2.2
date	2006-07-11T03:36:25
revision	2

sched_exp_time	8000.000000
ontime	7966.38776052
ontime2	7966.3877406418
ontime3	7966.3877406418
ontime5	7966.3877406418
ontime6	7966.3877406418
ontime7	7966.38776052
ontime8	7966.3877406418
l1events	309232

2.1.4 Events

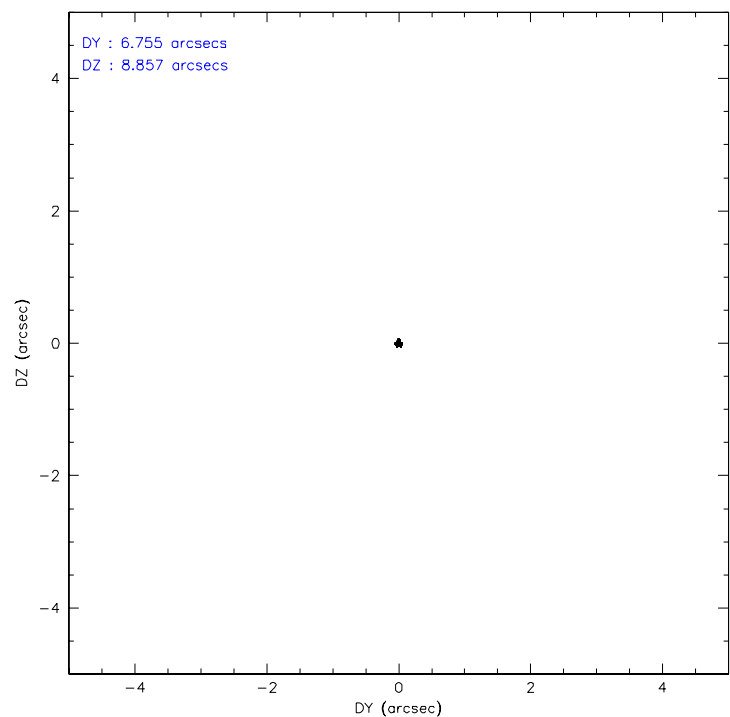
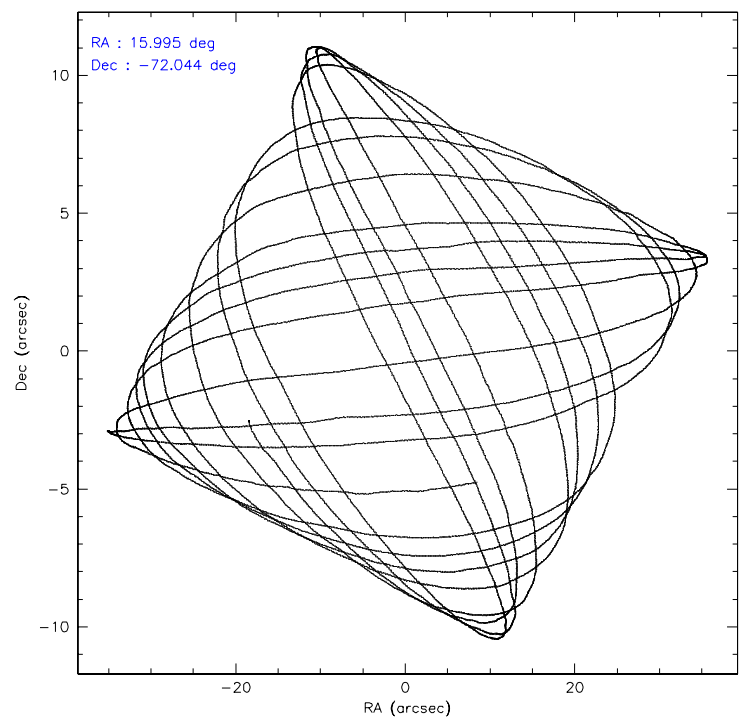
	ccd 2	ccd 3	ccd 5	ccd 6	ccd 7	ccd 8
level 1 events	42858	37851	49507	37462	94976	46578
rejected events	38778	33889	23614	33348	21056	35806
rejected %	90%	89%	47%	89%	22%	76%

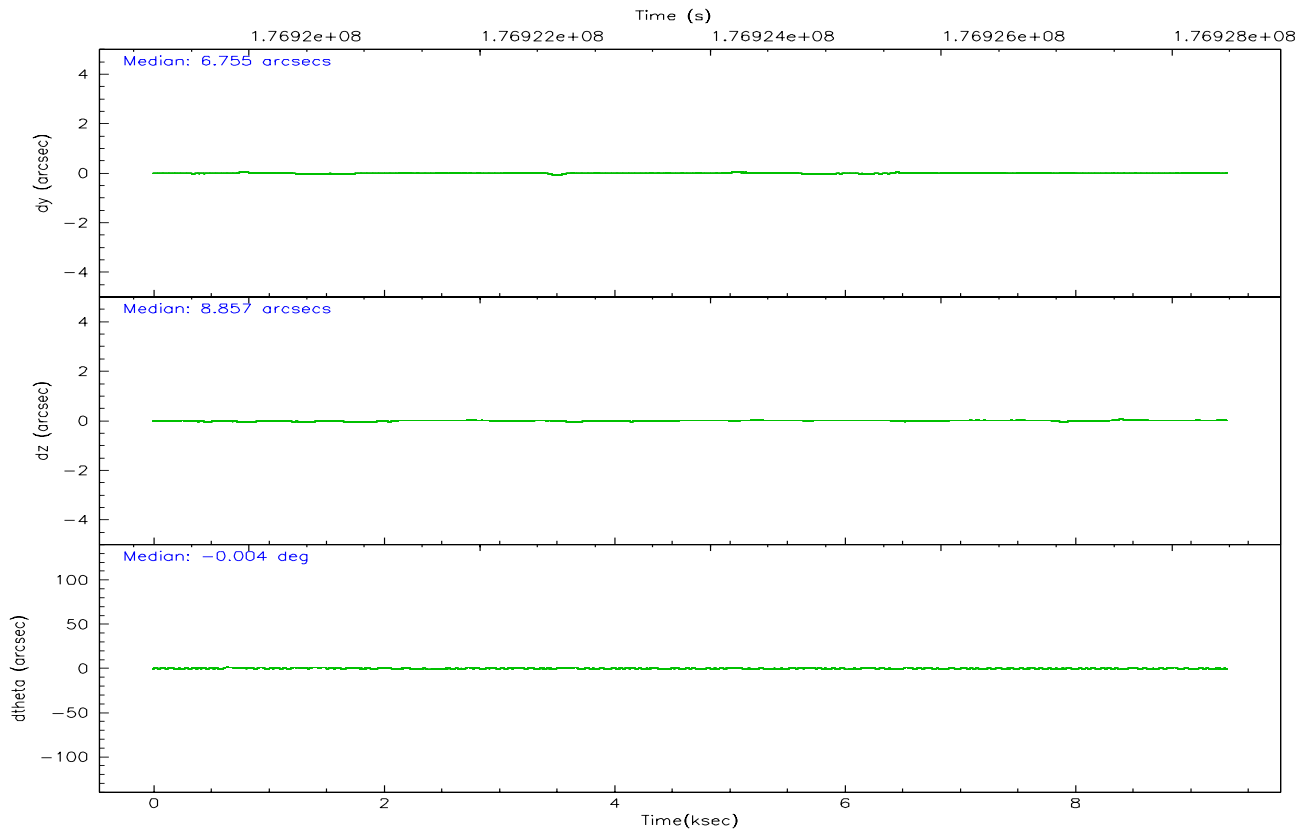
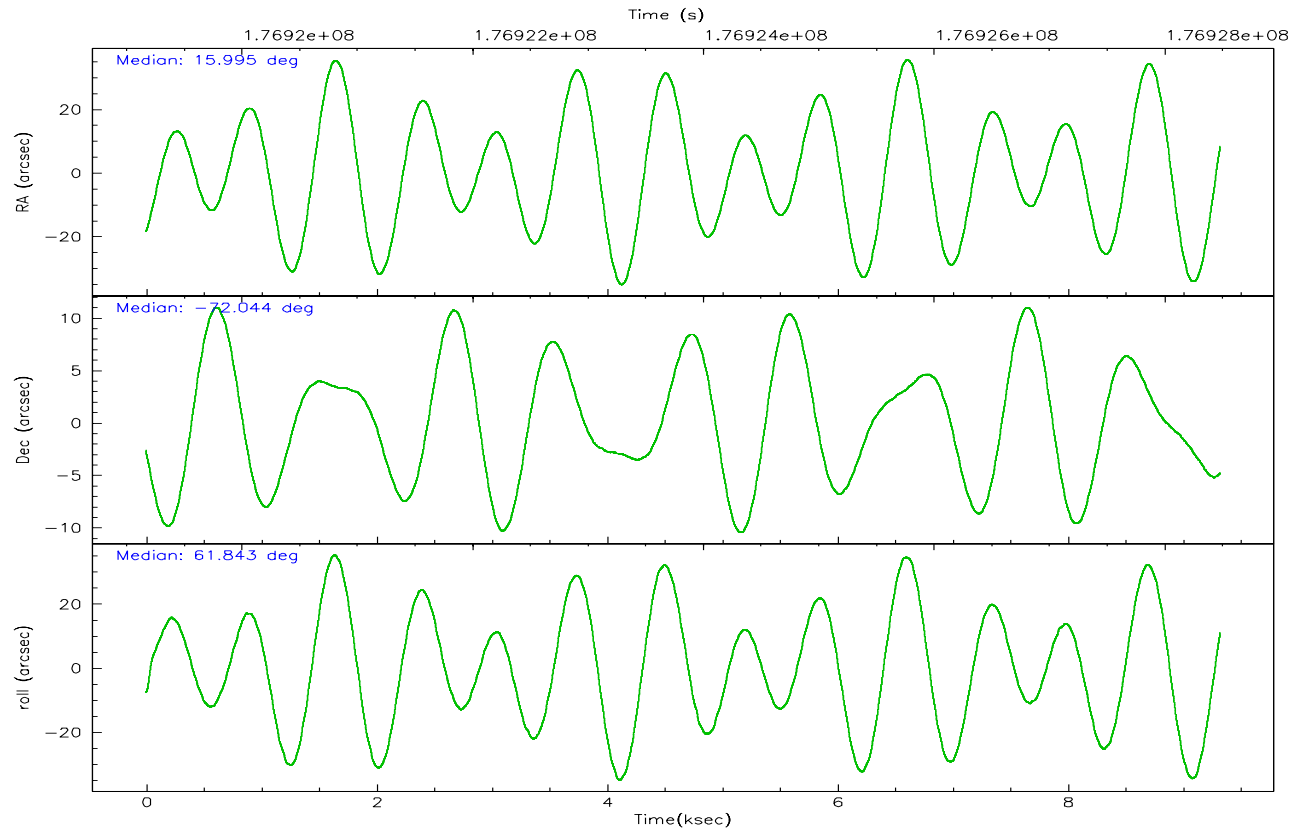
	ccd 2	ccd 3	ccd 5	ccd 6	ccd 7	ccd 8
grade 0 events	1680	1722	3790	1655	17617	3377
	3%	4%	7%	4%	18%	7%
grade 1 events	25	19	287	12	321	31
	0%	0%	0%	0%	0%	0%
grade 2 events	915	749	7776	830	21081	2373
	2%	1%	15%	2%	22%	5%
grade 3 events	426	452	815	438	7839	1160
	0%	1%	1%	1%	8%	2%
grade 4 events	440	418	707	458	7830	1175
	1%	1%	1%	1%	8%	2%
grade 5 events	1137	1220	3206	1367	3934	1899
	2%	3%	6%	3%	4%	4%
grade 6 events	621	627	12826	736	19618	2693
	1%	1%	25%	1%	20%	5%
grade 7 events	37614	32644	20100	31966	16736	33870
	87%	86%	40%	85%	17%	72%

2.2 Compared Parameters

Parameter	Planned	Actual	Parameter	Planned	Actual
Instrument	ACIS	ACIS	Obspar format version number	6	6
Detector	ACIS-235678	ACIS-235678	Obspar file type	PREDICTED	ACTUAL
Grating	NONE	NONE	Obspar update status	NONE	UPDATED
Data mode	VFAINT	VFAINT	On-chip summing requested	N	N
Observation mode	POINTING	POINTING	Subarray requested	NONE	NONE
Pointing RA	15.999375	15.9951634470966	Alternating exposures requested	N	N
Pointing Dec	-72.071147	-72.0440152536485	Primary exposure time	0.000000	3.2
Pointing Roll	61.697073	61.84969256694372			
Window start time	174614464.184000	174614464.184000			
Window stop time	177292864.184000	177292864.184000			
SIM focus pos (mm)	-0.684267	-0.6828225247311905			
SIM defocus (mm)	0	0.001444936568705701			
SIM translation stage pos (mm)	-190.132523	-190.1425803651734			
SIM translation stage offset (mm)	0	0.01005778216563158			
Observation start time	176920485.184000	176918955.42667			
Observation start date	2003-08-10T16:33:41	2003-08-10T16:09:15			
Observation end time	176928485.184000	176929441.17712			
Observation end date	2003-08-10T18:47:01	2003-08-10T19:04:01			
Read mode	TIMED	TIMED			

2.3 Aspect



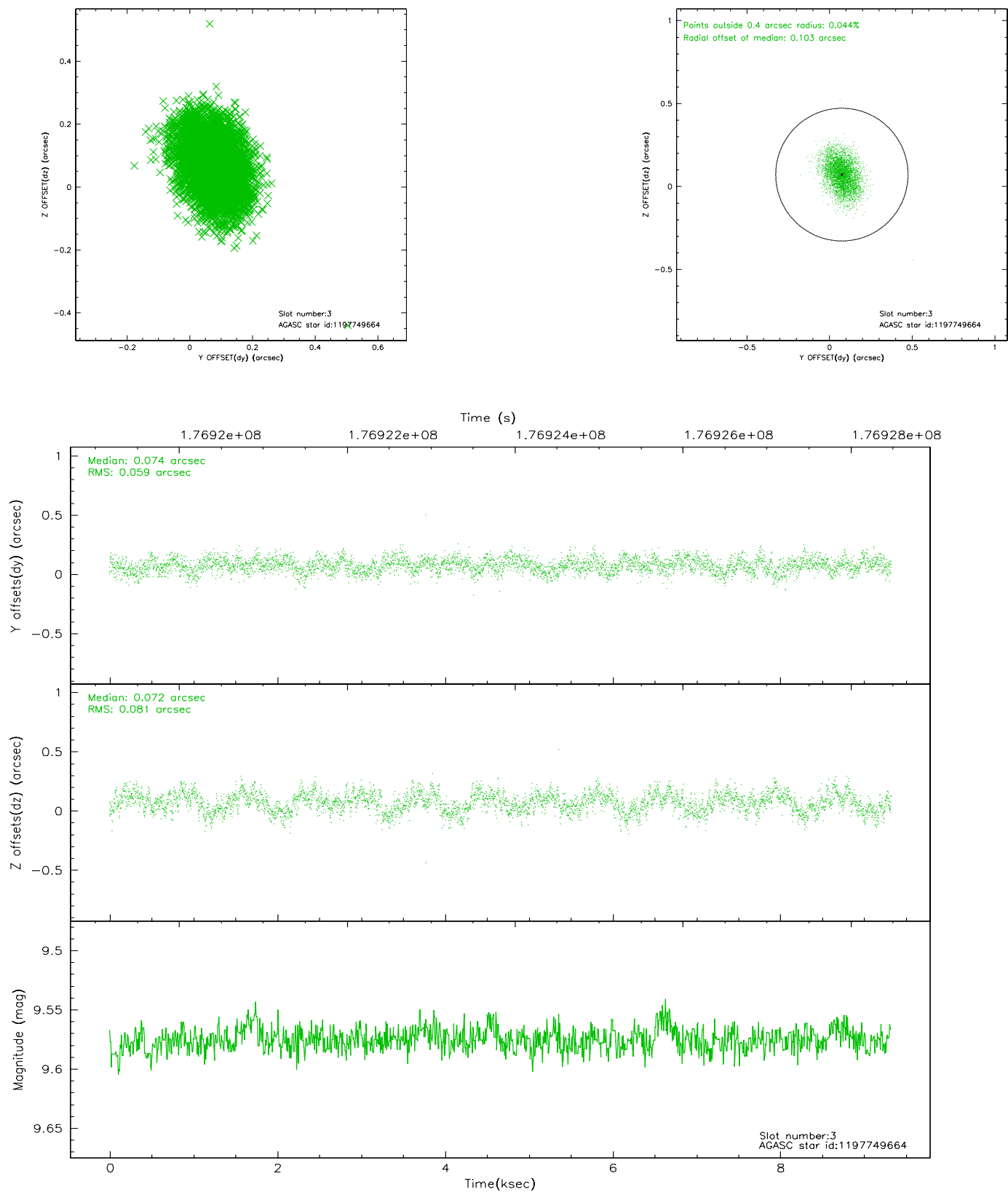


Slot Statistics

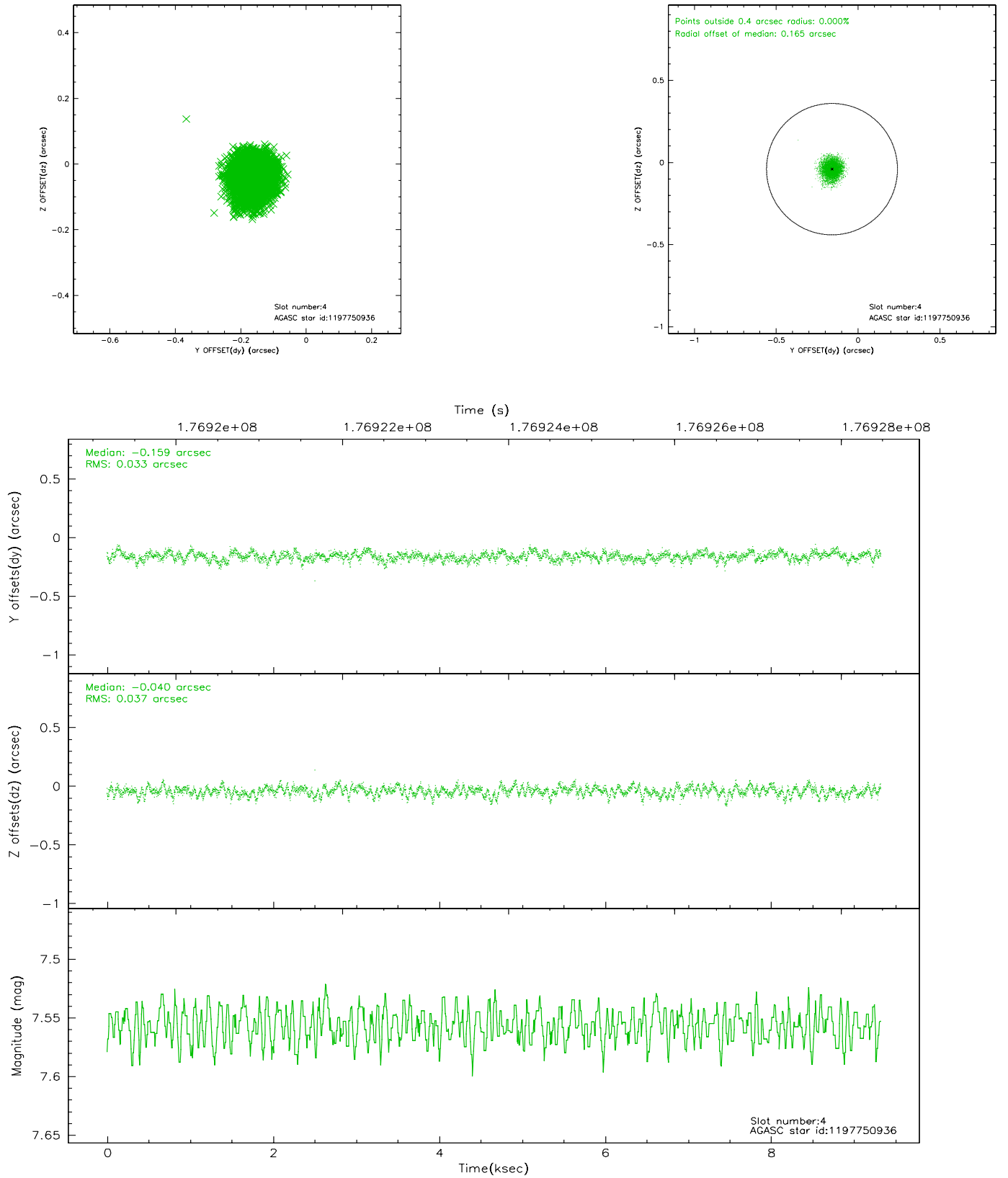
slot	status	id	mag	n_pts	med_dy	med_dz	dr1	dr2	ra	dec	mean_y	mean_z
0	FID	ACIS-S-2	7.09	2275	-0.022	-0.018	0.007	0.011	0.000000	0.000000	-759.52	-1730.04
1	FID	ACIS-S-4	7.20	2275	0.024	0.016	0.005	0.009	0.000000	0.000000	2153.54	177.88
2	FID	ACIS-S-5	7.22	2275	-0.032	0.011	0.006	0.011	0.000000	0.000000	-1811.62	172.21
3	GUIDE	1197749664	9.58	4548	0.074	0.072	0.106	0.172	15.809015	-72.366369	-1033.88	-321.45
4	GUIDE	1197750936	7.56	4549	-0.159	-0.040	0.053	0.085	15.387940	-71.549550	1319.63	1501.86
5	GUIDE	1197884712	8.30	4546	0.047	0.005	0.064	0.100	16.087398	-72.252690	-528.89	-394.78
6	GUIDE	1197885104	9.36	4547	-0.002	0.016	0.096	0.151	17.845067	-72.189368	561.60	-2005.75
7	GUIDE	1197750824	10.09	4545	0.038	-0.044	0.154	0.239	14.791487	-71.393477	1478.30	2371.28

2.4 Star Slots

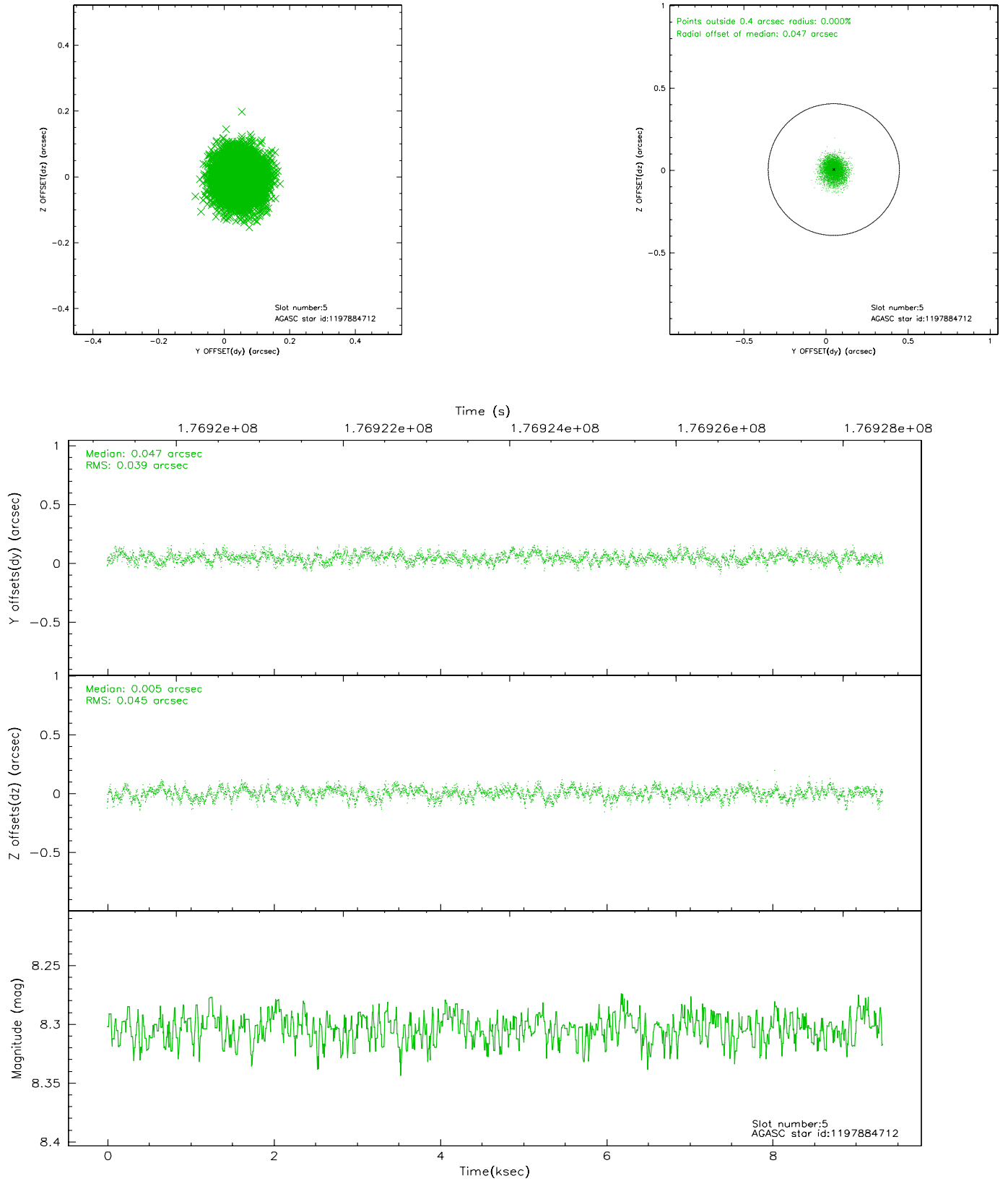
2.4.1 Slot 3



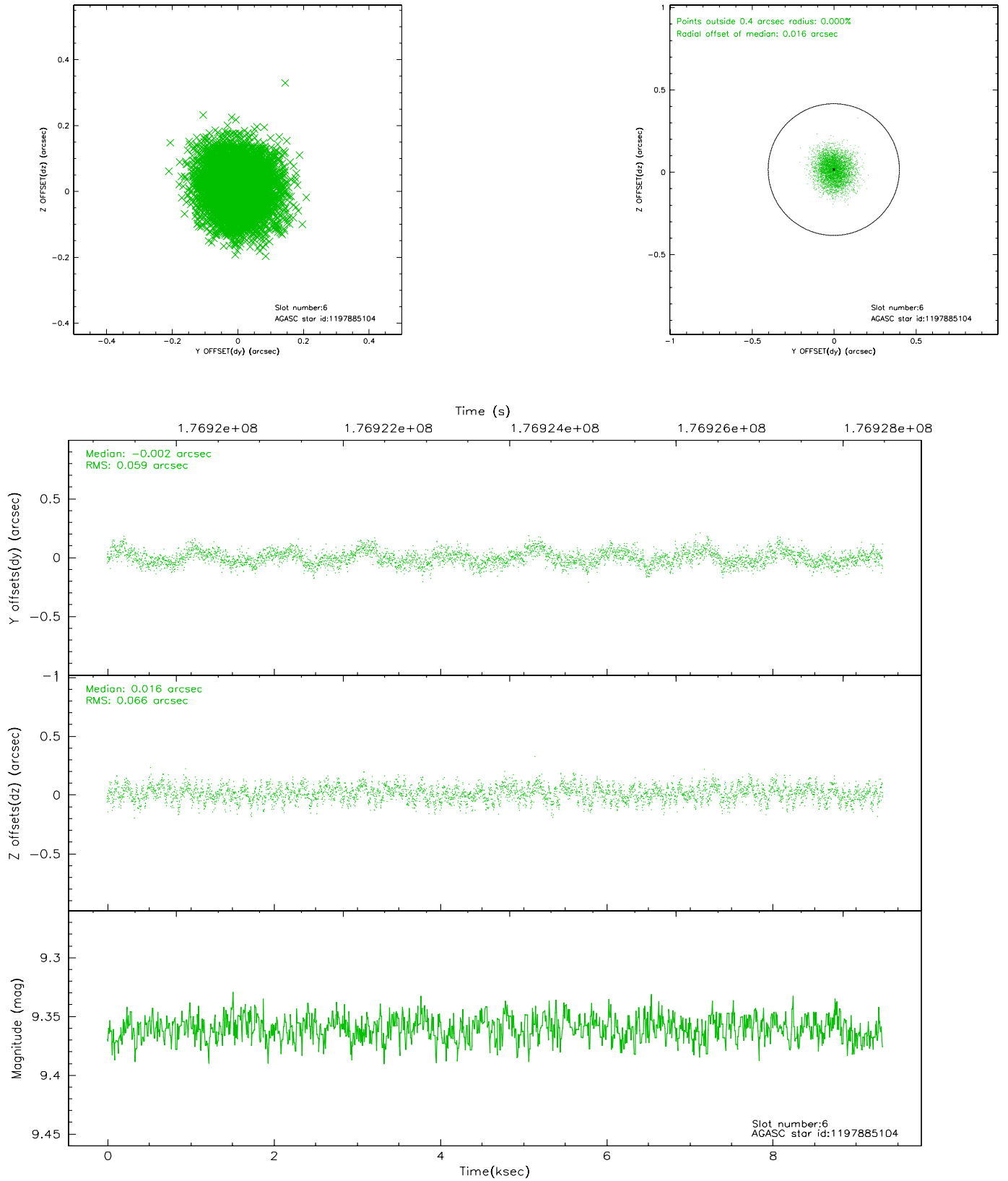
2.4.2 Slot 4



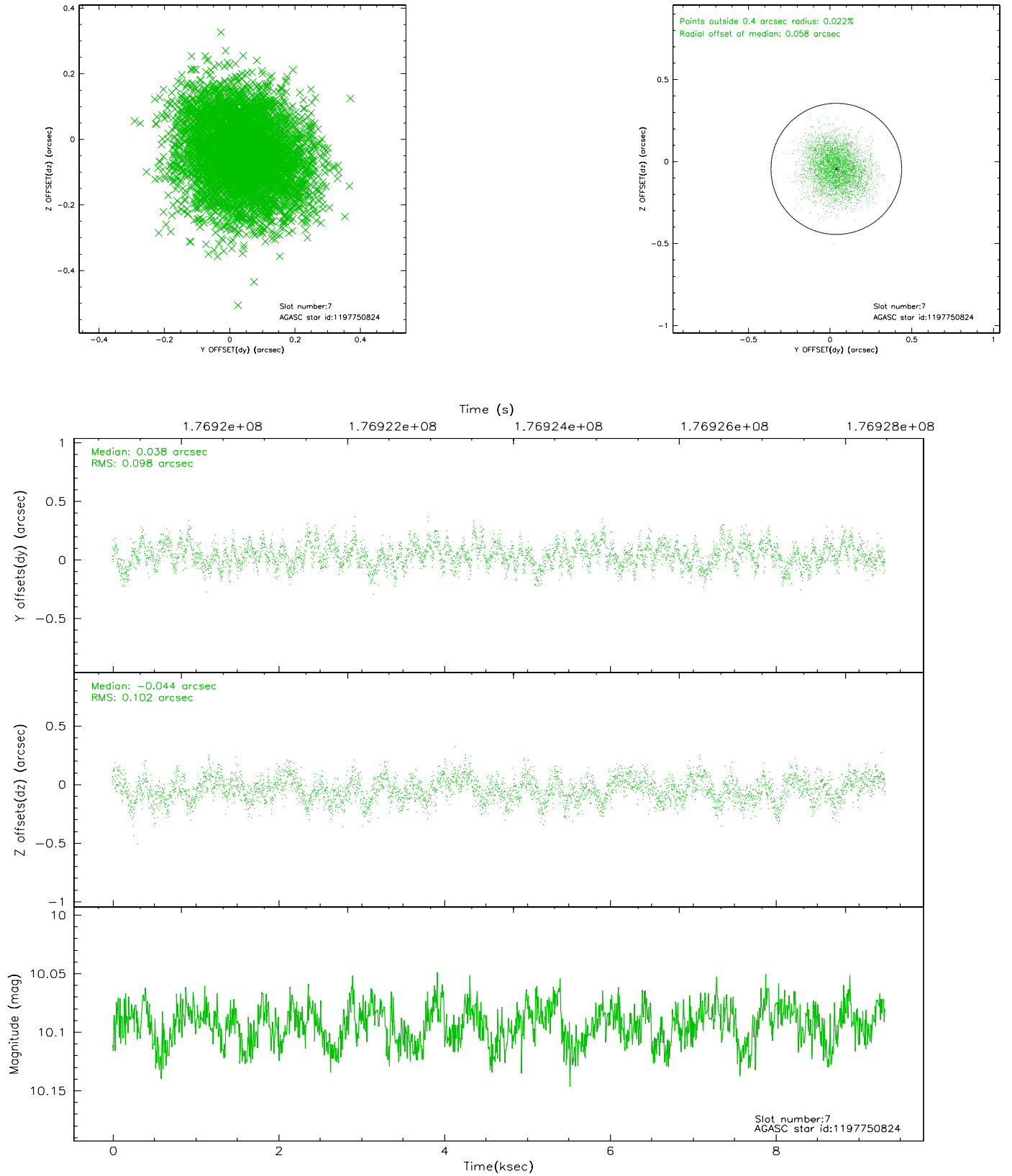
2.4.3 Slot 5



2.4.4 Slot 6

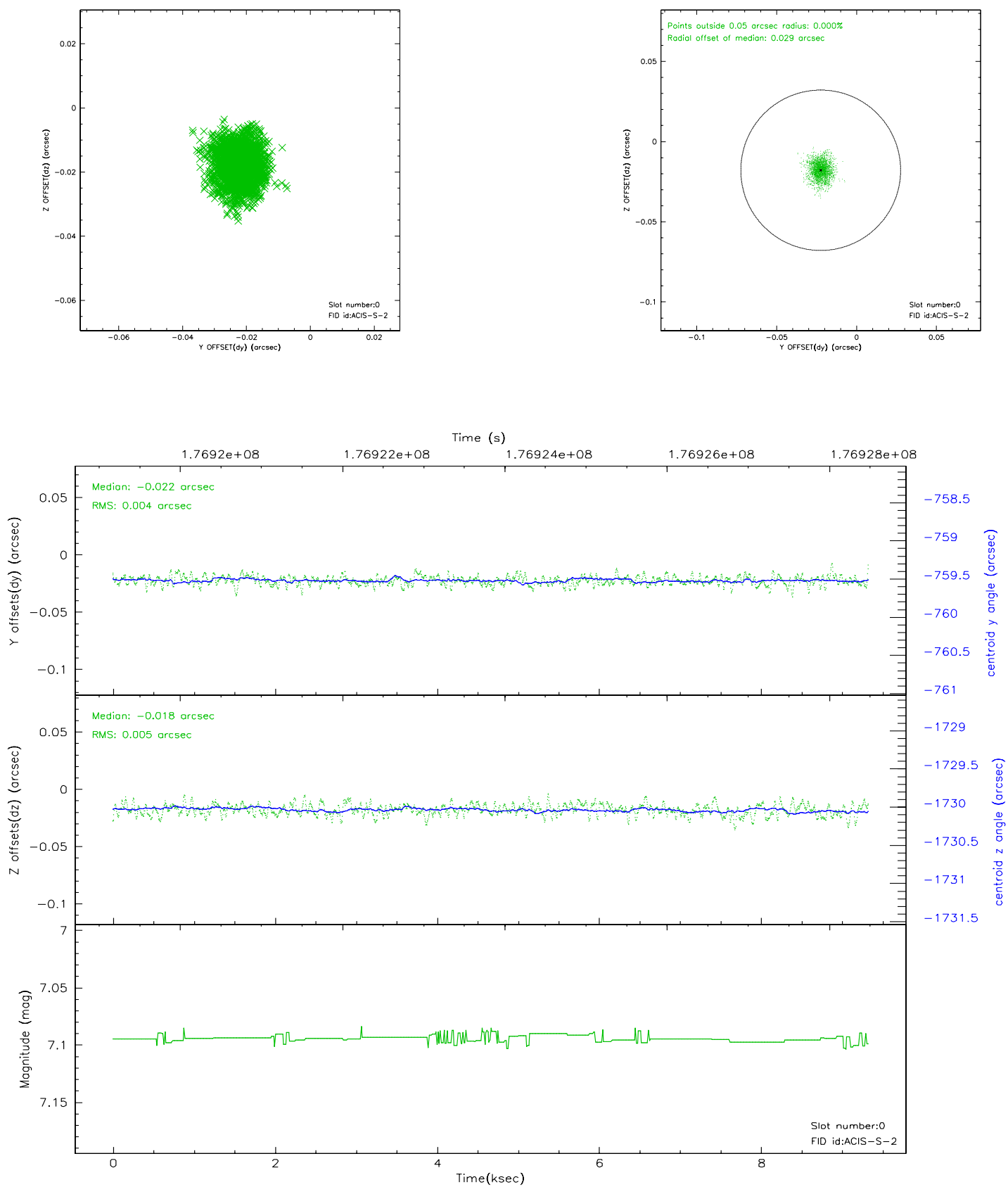


2.4.5 Slot 7

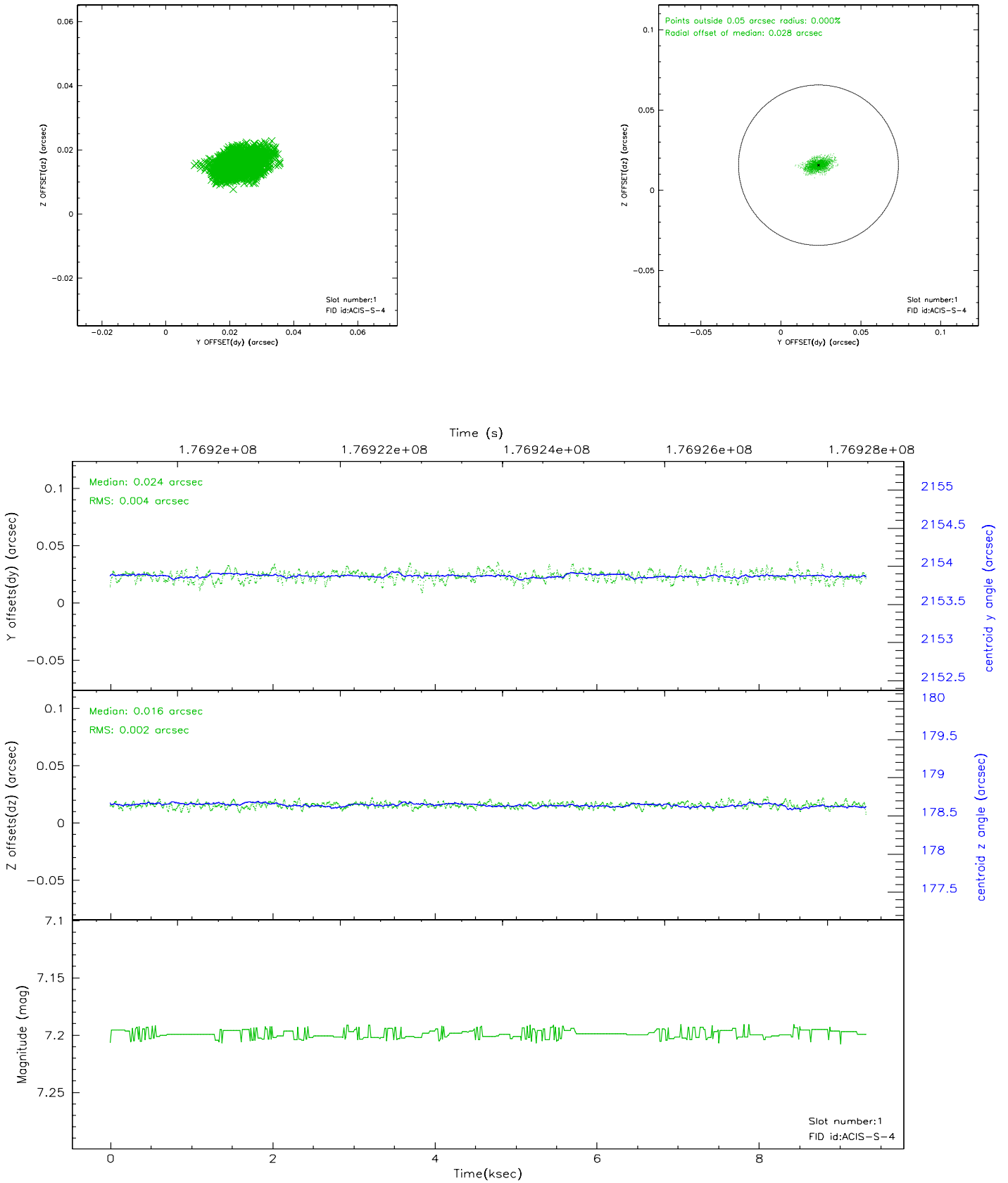


2.5 FID Slots

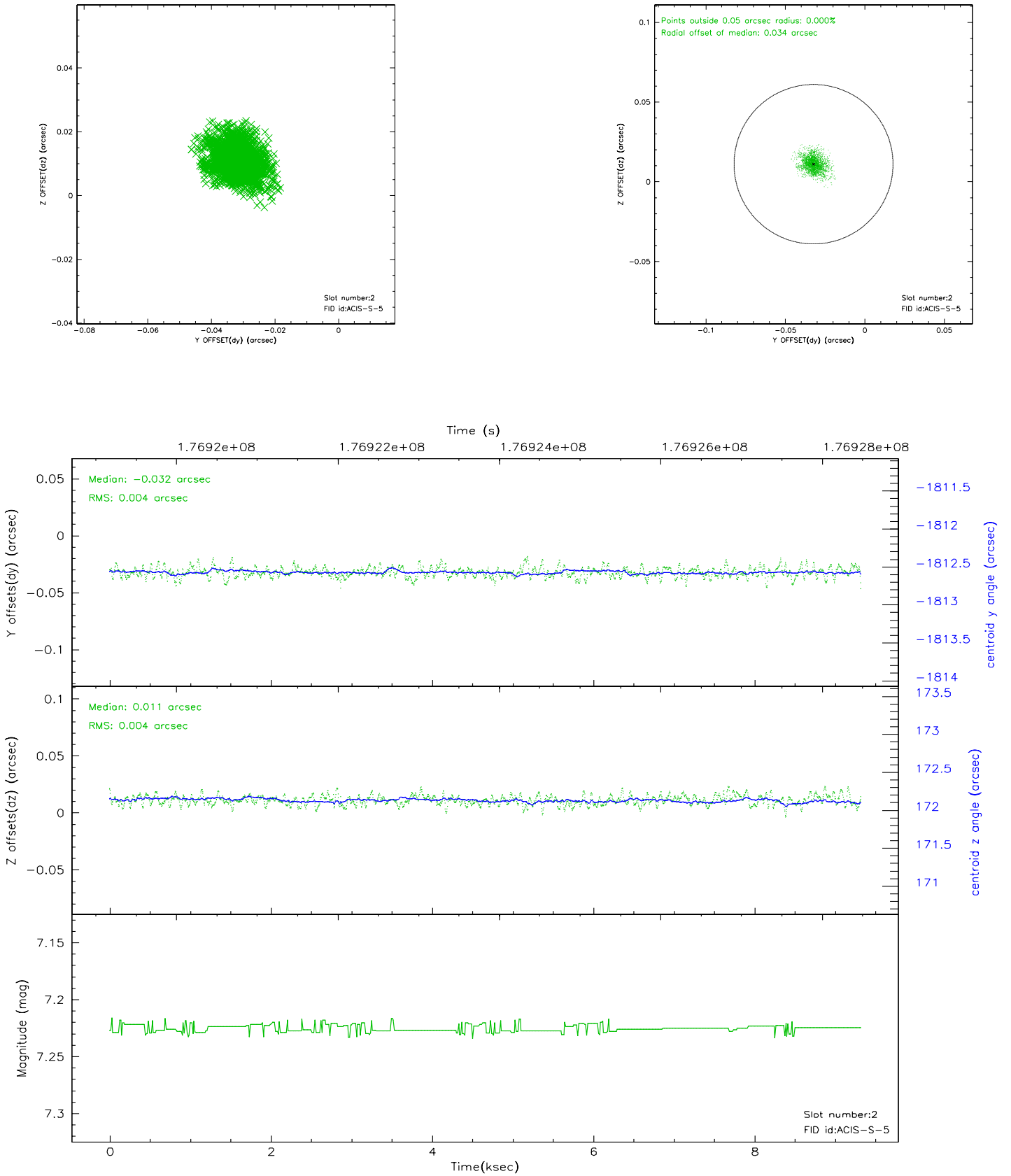
2.5.1 Slot 0



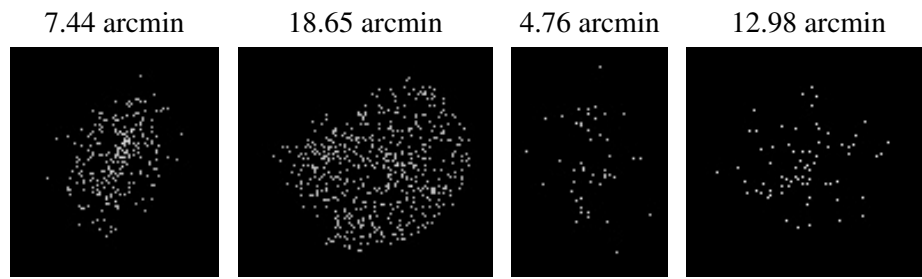
2.5.2 Slot 1



2.5.3 Slot 2



3 Point Sources



A Summary

A.1 Status

V&V Scientist	Beth Sundheim
V&V Date (YYYY-MM-DD)	2006.07.11
V&V Edition	1
V&V Disposition and Status	OK
V&V Charge Time	7.964

A.2 Comments

Window constraint satisfied.