

V&V Reference Report

L2 ASCDS Version : 8.4.5

Observation 3364 - L2 Version 4
Chandra X-Ray Center

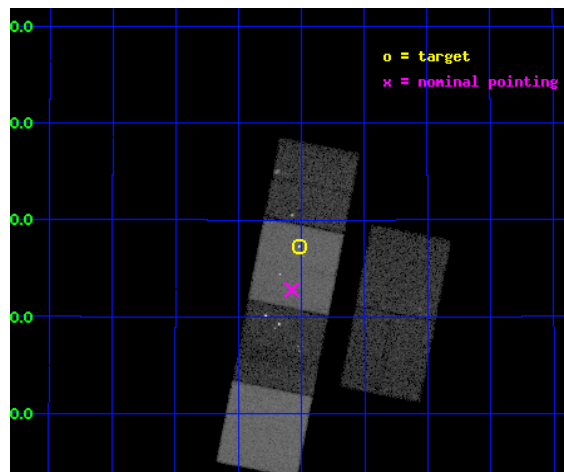
L2 Processing Date : Oct 3 2012

Contents

1	Front	2
2	OBI	3
2.1	OBI	3
2.1.1	Images	3
2.1.2	Bias	3
2.1.3	Parameters	4
2.1.4	Events	4
2.2	Compared Parameters	5
2.3	Aspect	6
2.4	Star Slots	9
2.4.1	Slot 3	9
2.4.2	Slot 4	10
2.4.3	Slot 5	11
2.4.4	Slot 6	12
2.4.5	Slot 7	13
2.5	FID Slots	14
2.5.1	Slot 0	14
2.5.2	Slot 1	15
2.5.3	Slot 2	16
A	Summary	17
A.1	Status	17
A.2	Comments	17

1 Front

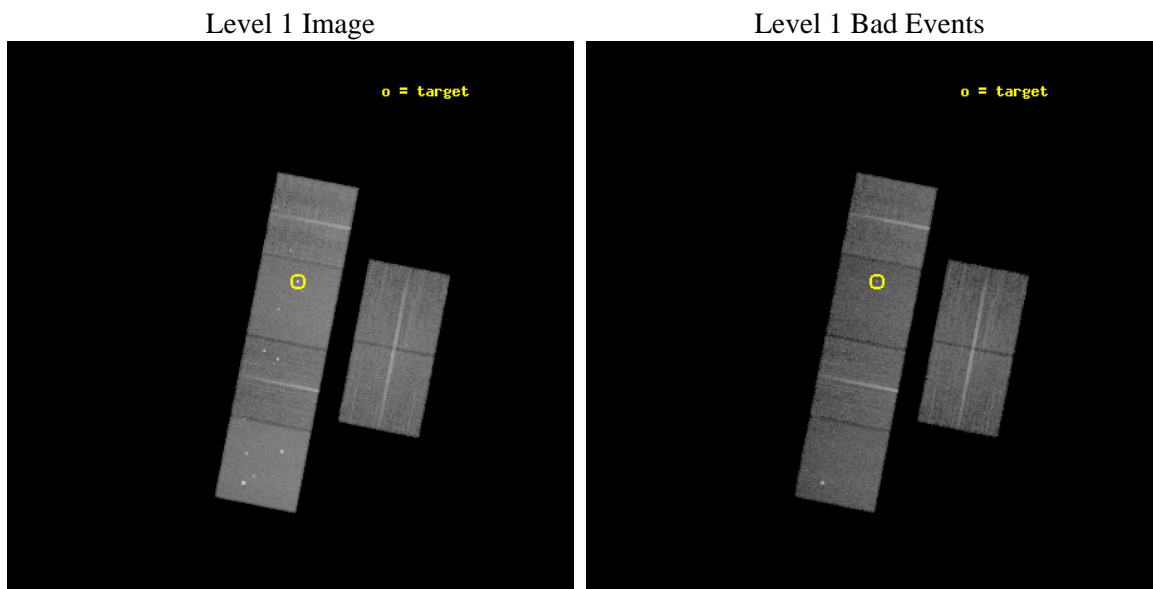
seq_num	200191	Sequence number
obs_id	3364	Observation id
title	ORIGIN OF THE X-RAY EMISSION OF THE PREMAIN SEQUENCE STAR V 410 TAU	
observer	Dr. Peter Predehl	Principal investigator
object	V 410 TAU	Source name
dtcycle	0	
cycle	P	events from which exps? Prim/Second/Both
ra_targ	64.629583	Observer's specified target RA [deg]
dec_targ	28.454444	Observer's specified target Dec [deg]
ra_nom	64.644078717408	Nominal RA [deg]
dec_nom	28.379790990273	Nominal Dec [deg]
roll_nom	281.1166188254	Nominal Roll [deg]
revision	4	Processing version of data
ontime	17960.467940792	Sum of GTIs [s]
livetime	17733.041681231	Livetime [s]
ontime2	17960.508980796	Sum of GTIs [s]
ontime3	17960.344820797	Sum of GTIs [s]
ontime5	17960.426900789	Sum of GTIs [s]
ontime6	17960.385860801	Sum of GTIs [s]
ontime7	17960.467940792	Sum of GTIs [s]
ontime8	17960.303780794	Sum of GTIs [s]
l2events	200381	Number of level 2 events



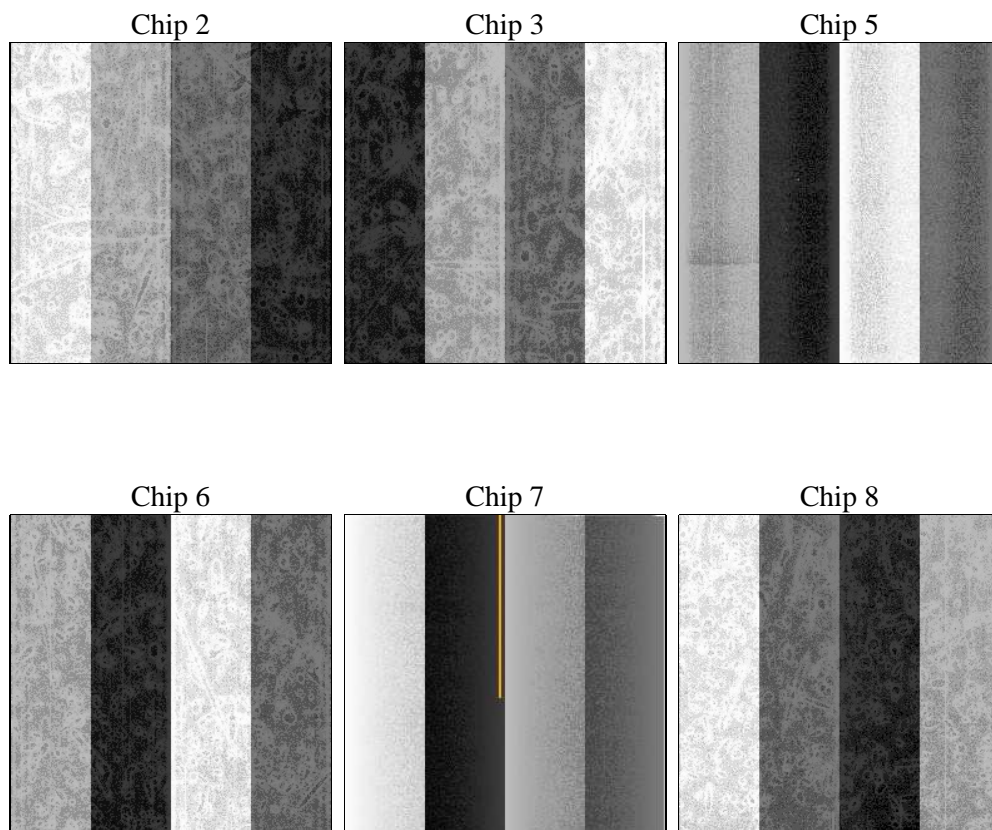
2 OBI

2.1 OBI

2.1.1 Images



2.1.2 Bias



2.1.3 Parameters

obi_num	3	Obi number	sched_exp_time	18000.000000	[s] Scheduled observation exposure time
ascdsver	8.4.5	Processing system revision	ontime	17960.467940792	Sum of GTIs [s]
caldsver	4.5.2	 	ontime2	17960.508980796	Sum of GTIs [s]
date	2012-10-03T03:44:19	Date and time of file creation	ontime3	17960.344820797	Sum of GTIs [s]
revision	4	Processing version of data	ontime5	17960.426900789	Sum of GTIs [s]
			ontime6	17960.385860801	Sum of GTIs [s]
			ontime7	17960.467940792	Sum of GTIs [s]
			ontime8	17960.303780794	Sum of GTIs [s]
			l1events	872734	Number of level 1 events

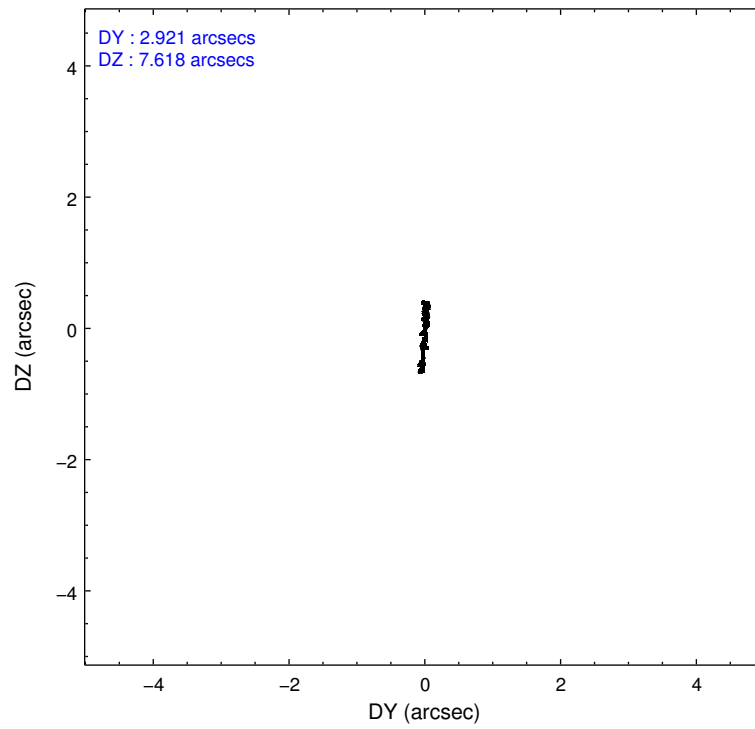
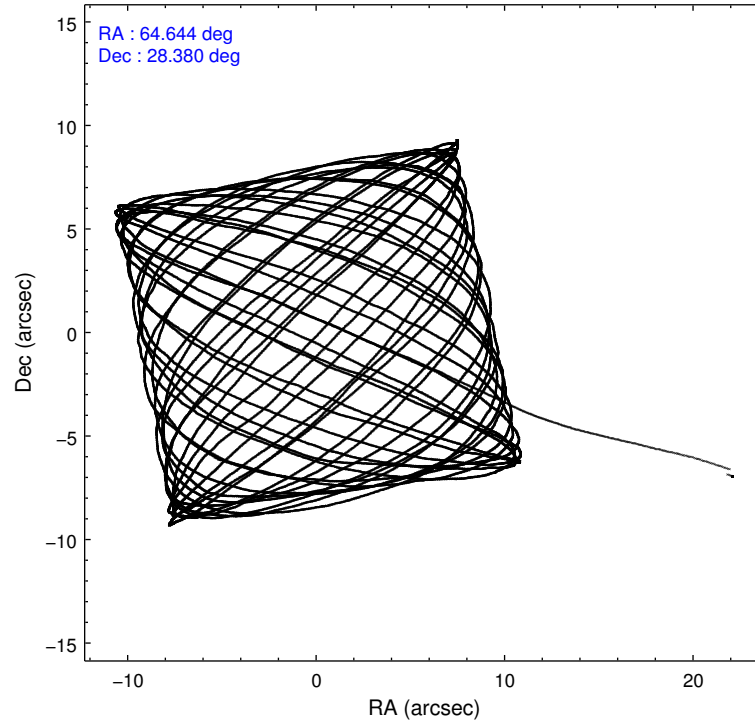
2.1.4 Events

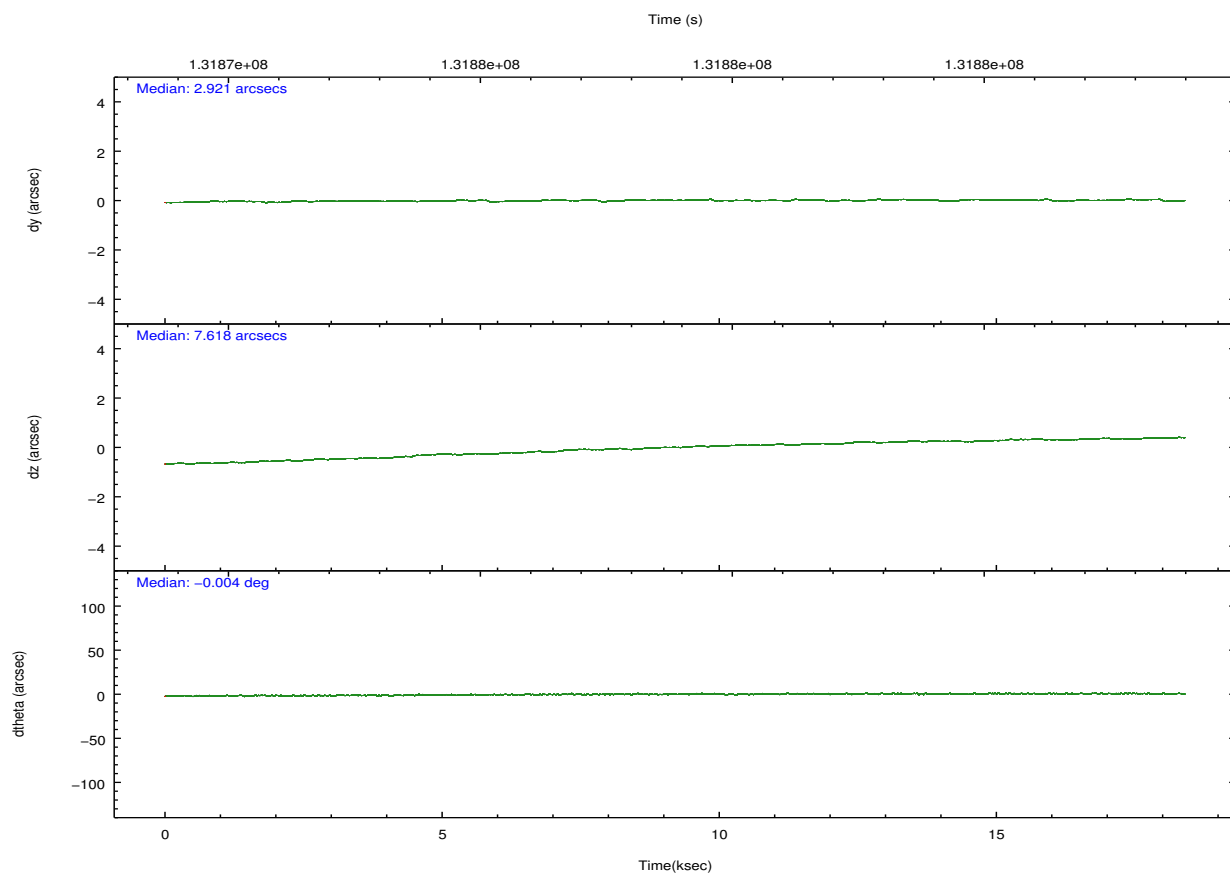
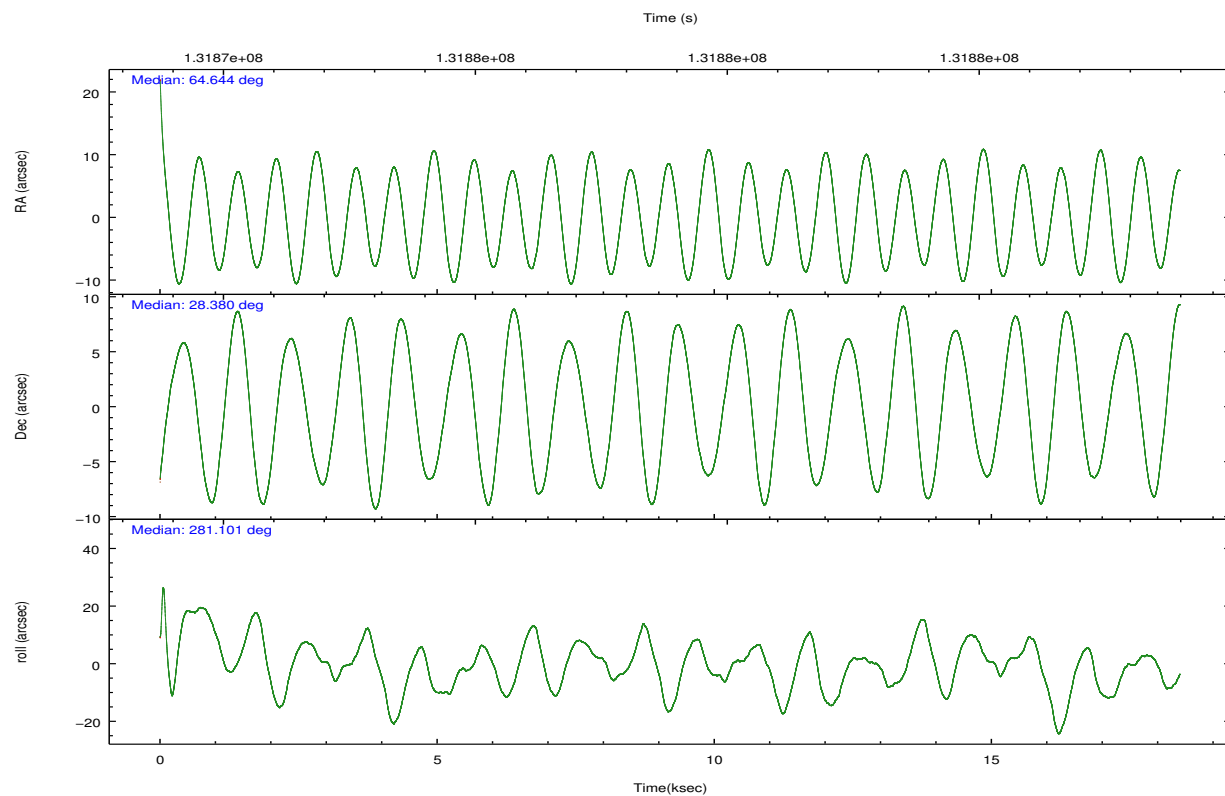
	ccd 2	ccd 3	ccd 5	ccd 6	ccd 7	ccd 8		ccd 2	ccd 3	ccd 5	ccd 6	ccd 7	ccd 8
level 1 events	124595	121383	176089	131081	165612	153974	grade 0 events	5697	5578	10995	10534	8414	10630
rejected events	110875	107935	94884	110752	92651	120474		4%	4%	6%	8%	5%	6%
rejected %	88%	88%	53%	84%	55%	78%	grade 1 events	83	45	1893	203	240	107
								0%	0%	1%	0%	0%	0%
							grade 2 events	3046	2699	22832	3471	14962	7252
								2%	2%	12%	2%	9%	4%
							grade 3 events	1211	1366	3325	1642	6851	3676
								0%	1%	1%	1%	4%	2%
							grade 4 events	1248	1287	3108	1644	6819	3351
								1%	1%	1%	1%	4%	2%
							grade 5 events	4336	4764	12897	5267	15576	6663
								3%	3%	7%	4%	9%	4%
							grade 6 events	2520	2519	40954	3039	35927	8597
								2%	2%	23%	2%	21%	5%
							grade 7 events	106454	103125	80085	105281	76823	113698
								85%	84%	45%	80%	46%	73%

2.2 Compared Parameters

Parameter	Planned	Actual	Parameter	Planned	Actual
Instrument	ACIS	ACIS	Obspar format version number	7	7
Detector	ACIS-235678	ACIS-235678	Obspar file type	PREDICTED	ACTUAL
Grating	NONE	NONE	Obspar update status	NONE	UPDATED
Data mode	FAINT	FAINT	Number of optional ACIS chips dropped	0	0
Observation mode	POINTING	POINTING	On-chip summing requested	N	N
[deg] Pointing RA	64.623416	64.64407871740845	Subarray requested	NONE	NONE
[deg] Pointing Dec	28.400089	28.37979099027349	Alternating exposures requested	N	N
[deg] Pointing Roll	280.969801	281.1166188253987	[s] Primary exposure time	0.000000	3.2
[mm] SIM focus pos	-0.684267	-0.6828225247311905			
[mm] SIM defocus	0	0.001444936568705701			
[mm] SIM translation stage pos	-190.132523	-190.1400660498719			
[mm] SIM translation stage offset	0	0.00754346686406393			
[s] Observation start time (MET)	131870067.184000	131868992.51416			
Observation start date	2002-03-07T06:33:23	2002-03-07T06:16:32			
[s] Observation end time (MET)	131888067.184000	131888724.78996			
Observation end date	2002-03-07T11:33:23	2002-03-07T11:45:24			
Read mode	TIMED	TIMED			

2.3 Aspect



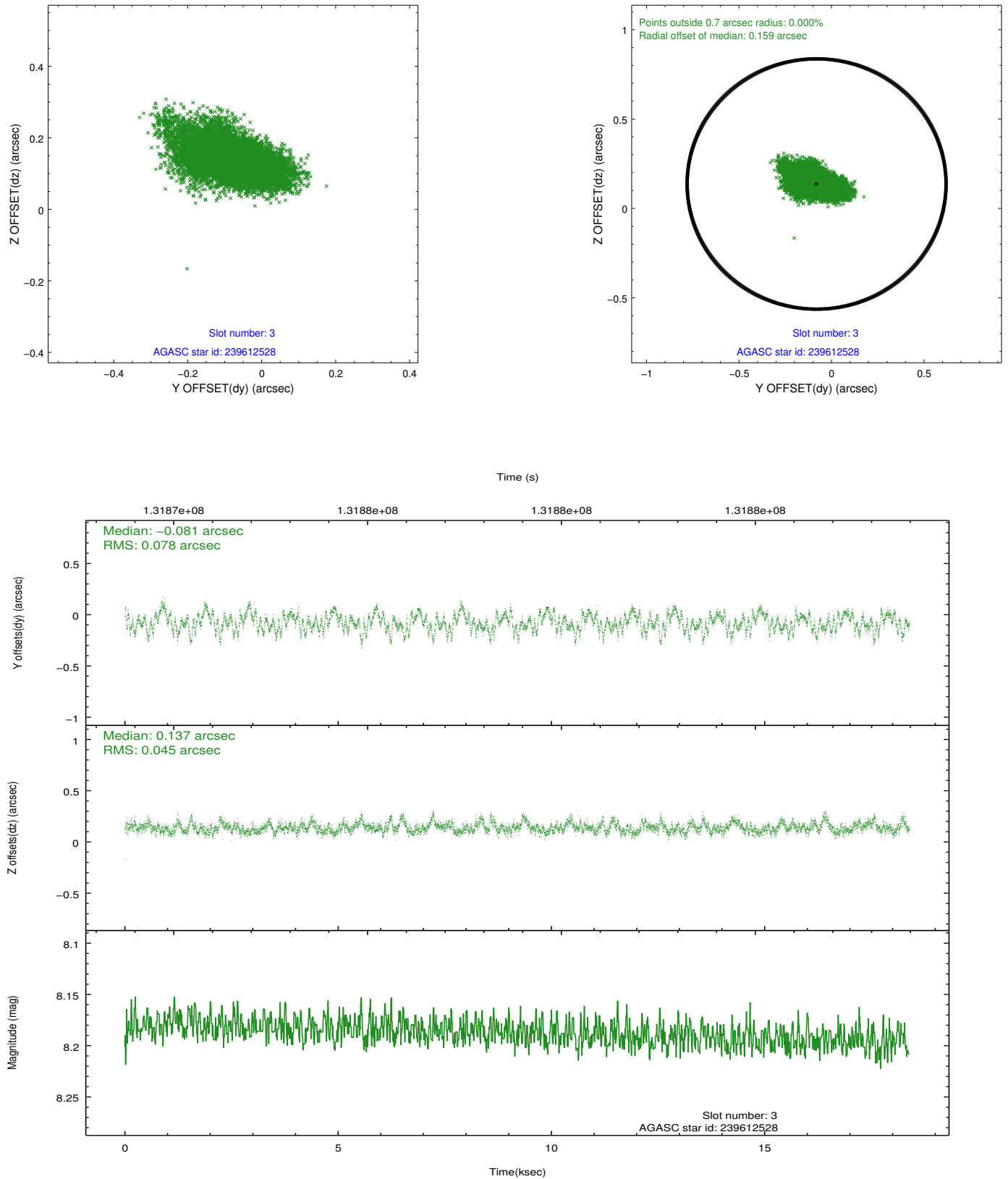


Slot Statistics

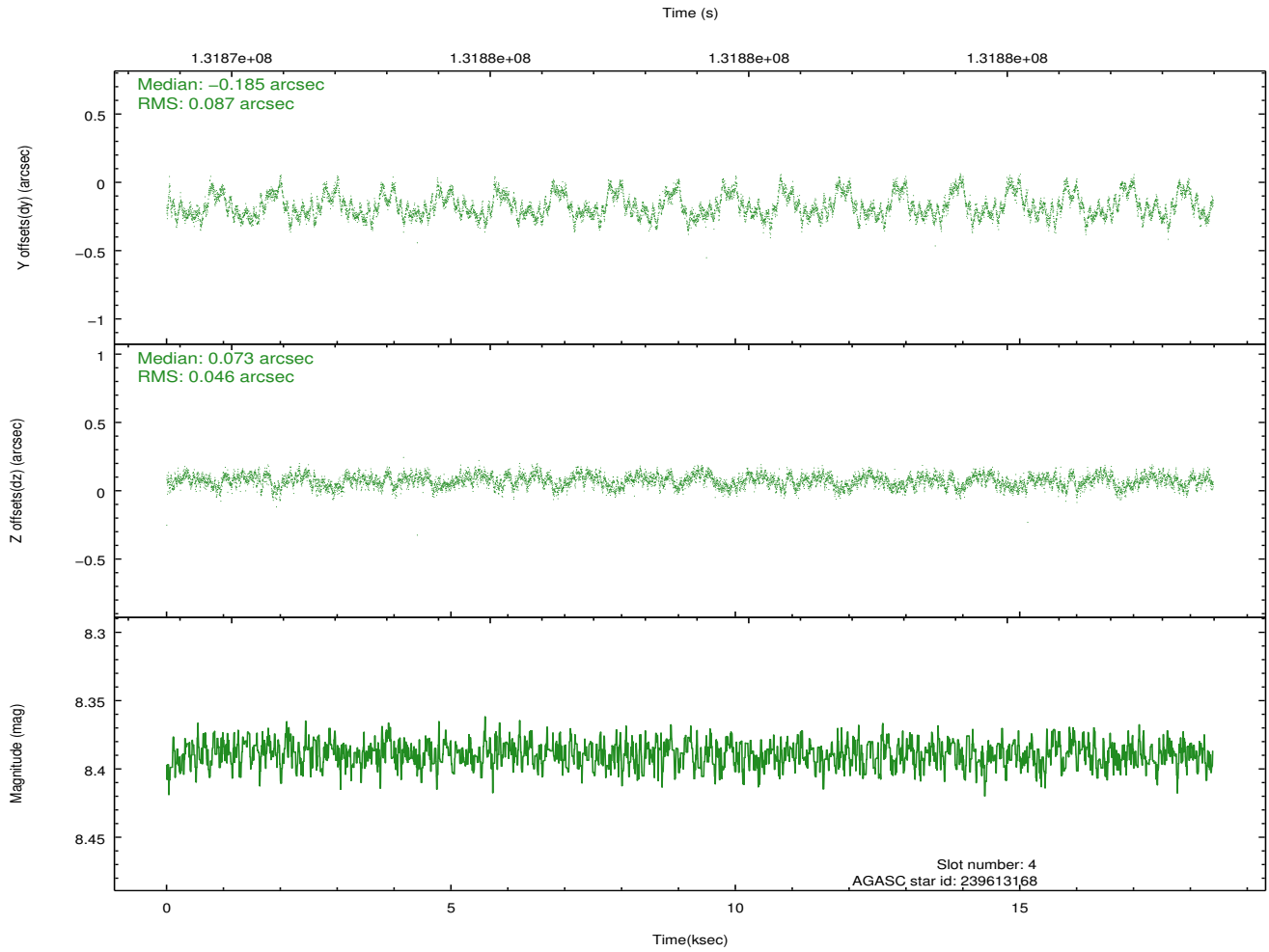
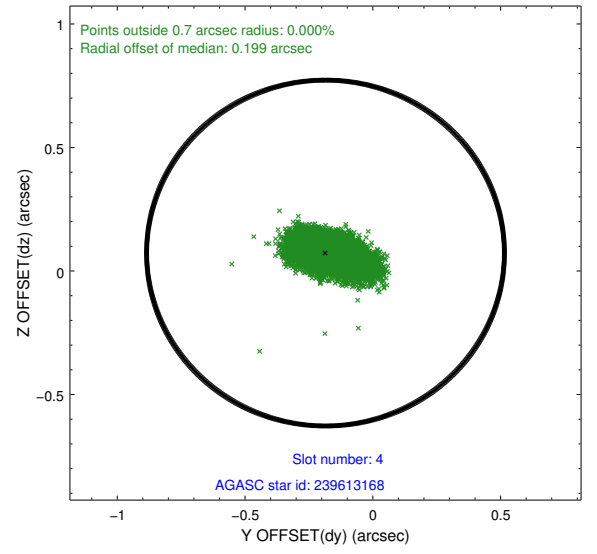
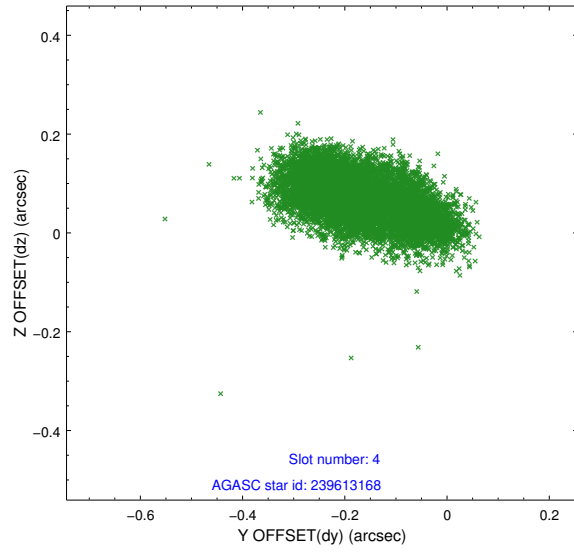
slot	status	id	mag	n_pts	med_dy	med_dz	dr1	dr2	ra	dec	mean_y	mean_z
0	FID	ACIS-S-2	7.11	4488	-0.007	0.001	0.009	0.015	0.000000	0.000000	-755.57	-1728.73
1	FID	ACIS-S-4	7.20	4488	-0.039	0.003	0.006	0.010	0.000000	0.000000	2157.58	179.52
2	FID	ACIS-S-5	7.24	4488	0.016	0.005	0.010	0.017	0.000000	0.000000	-1808.10	173.45
3	GUIDE	239612528	8.19	8976	-0.081	0.137	0.094	0.162	65.157445	28.892017	-1423.35	1989.86
4	GUIDE	239613168	8.39	8976	-0.185	0.073	0.103	0.179	65.055525	28.814853	-1210.44	1622.57
5	GUIDE	238958824	9.77	8945	0.290	-0.138	0.125	0.198	64.737810	27.958818	1628.14	55.43
6	GUIDE	239468608	10.60	8864	0.025	-0.060	0.284	0.459	64.629591	28.454470	-189.12	56.27
7	GUIDE	239602936	8.79	8973	-0.022	-0.012	0.092	0.148	65.403432	28.416154	403.85	2437.09

2.4 Star Slots

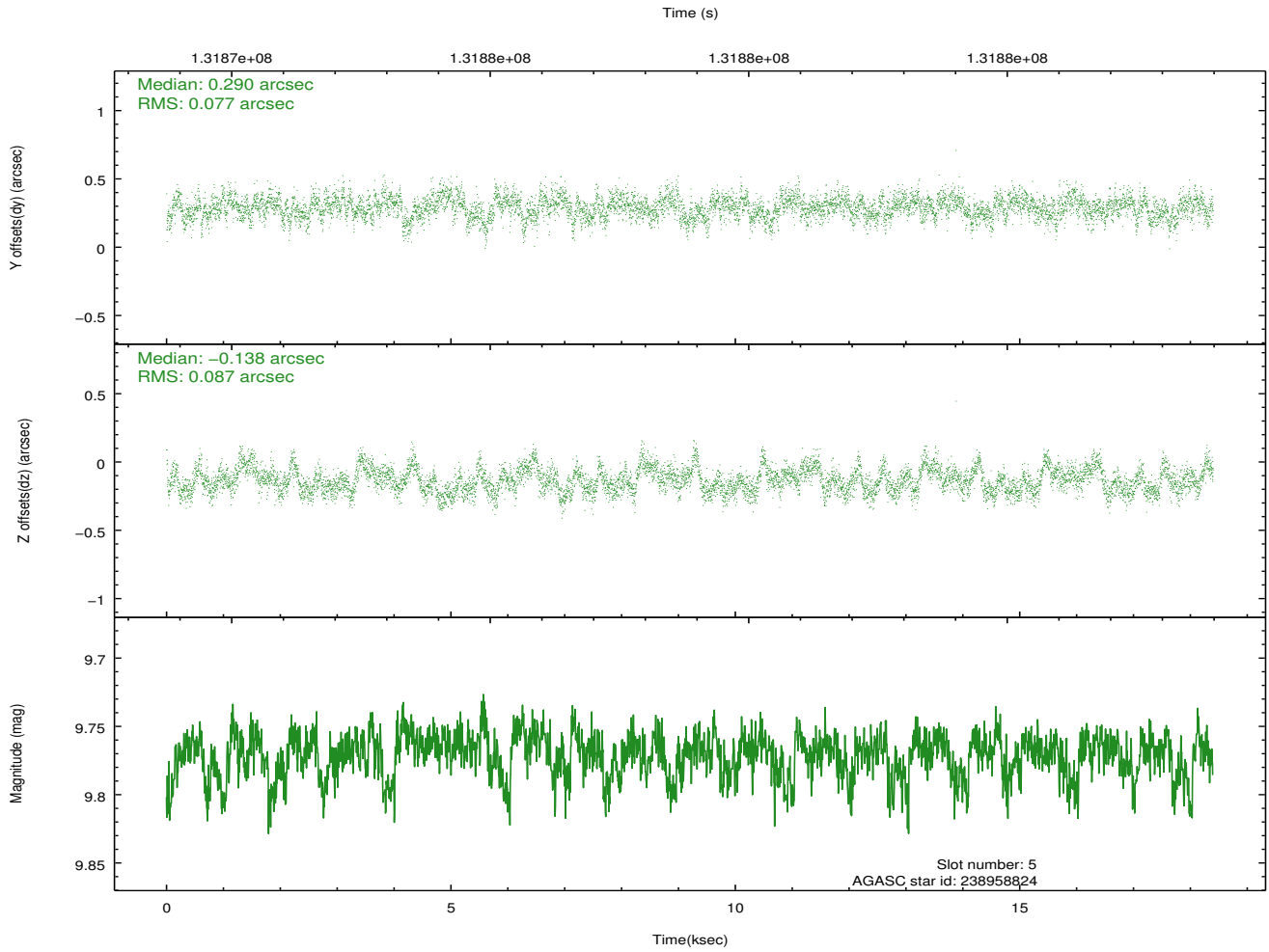
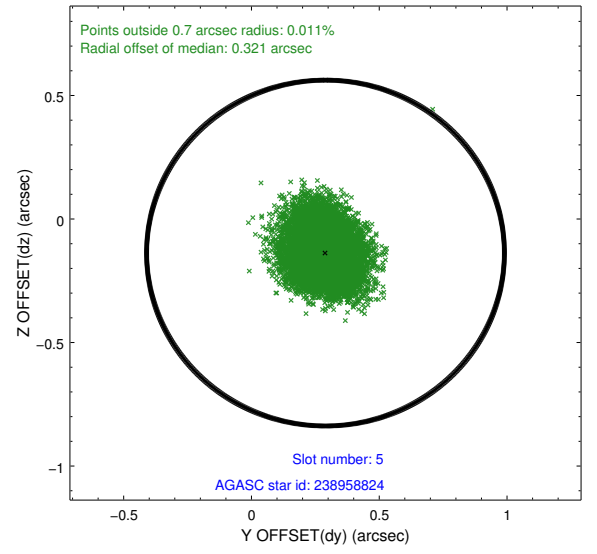
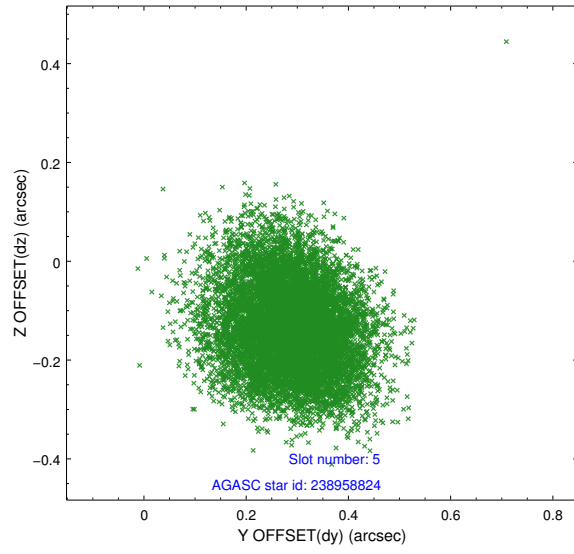
2.4.1 Slot 3



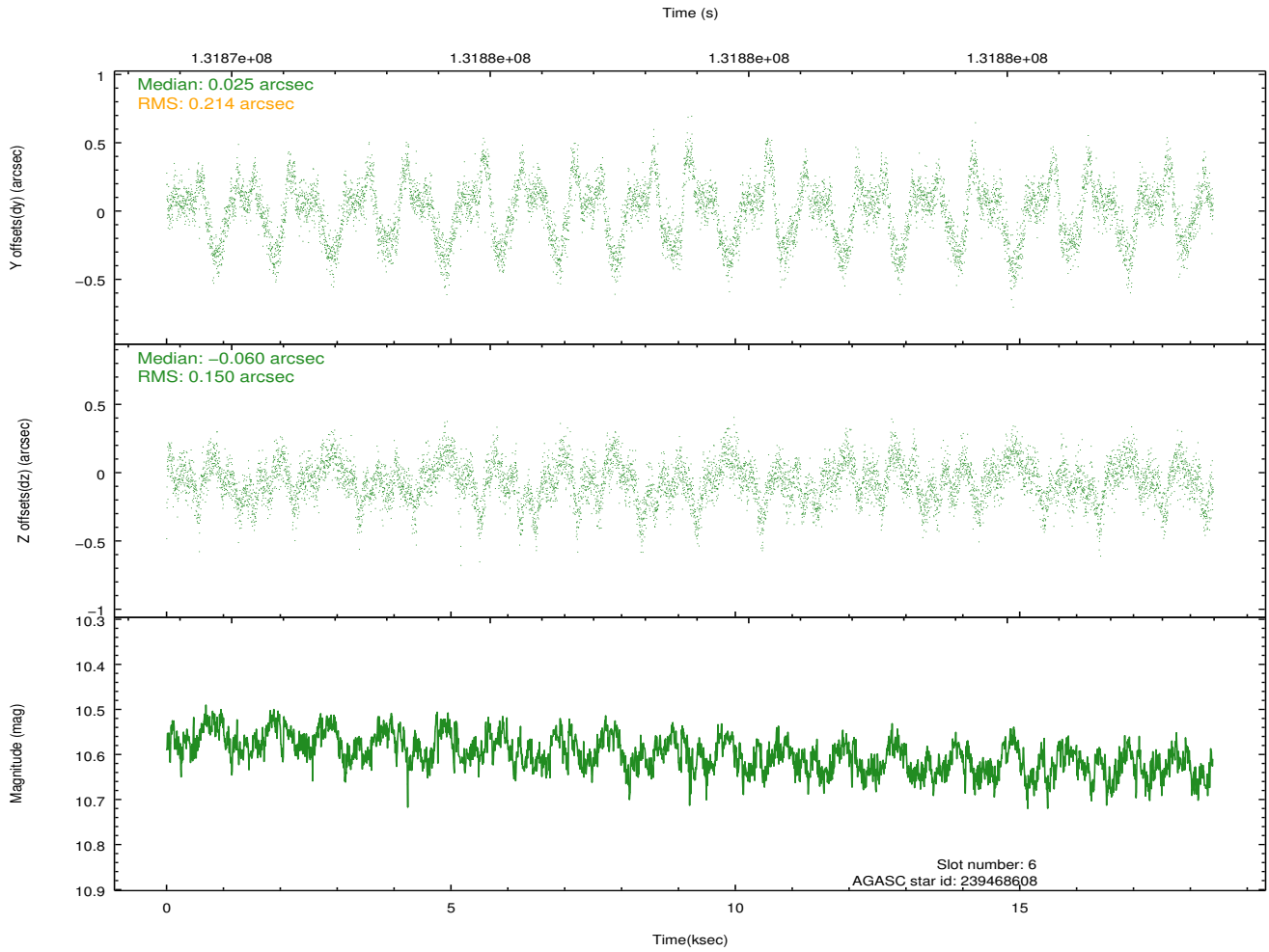
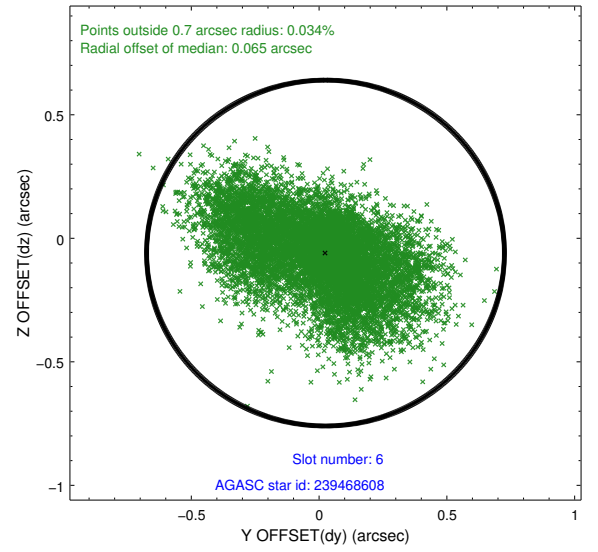
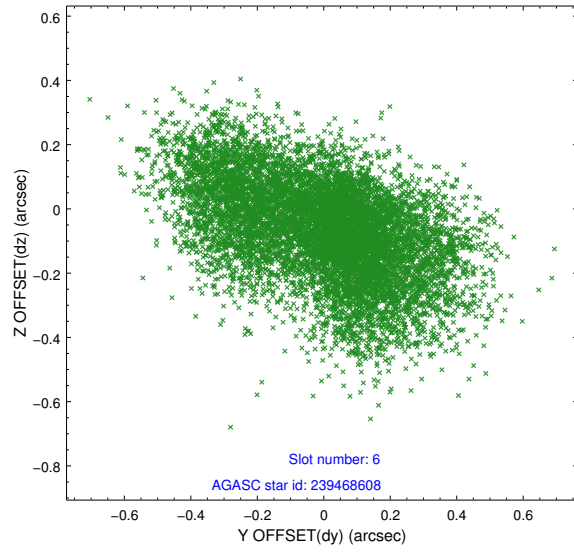
2.4.2 Slot 4



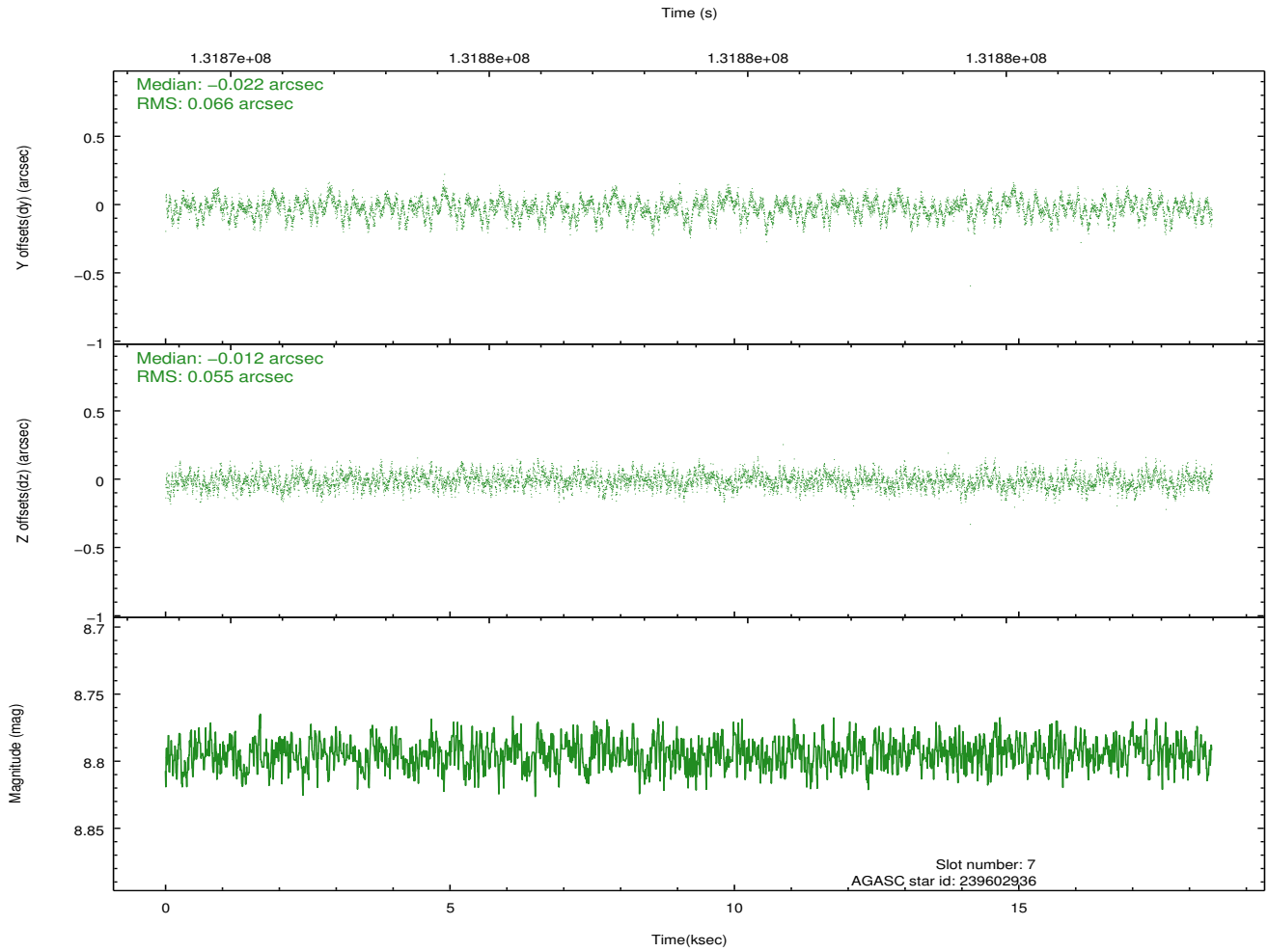
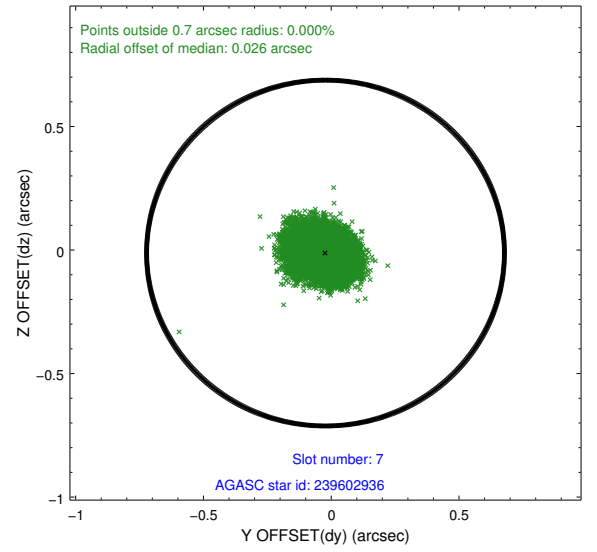
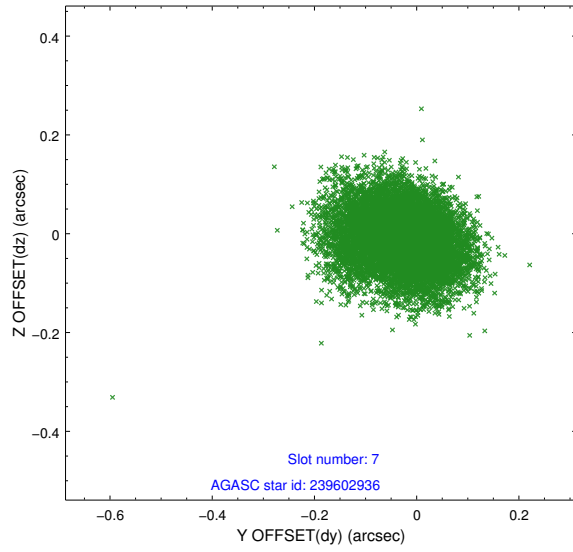
2.4.3 Slot 5



2.4.4 Slot 6

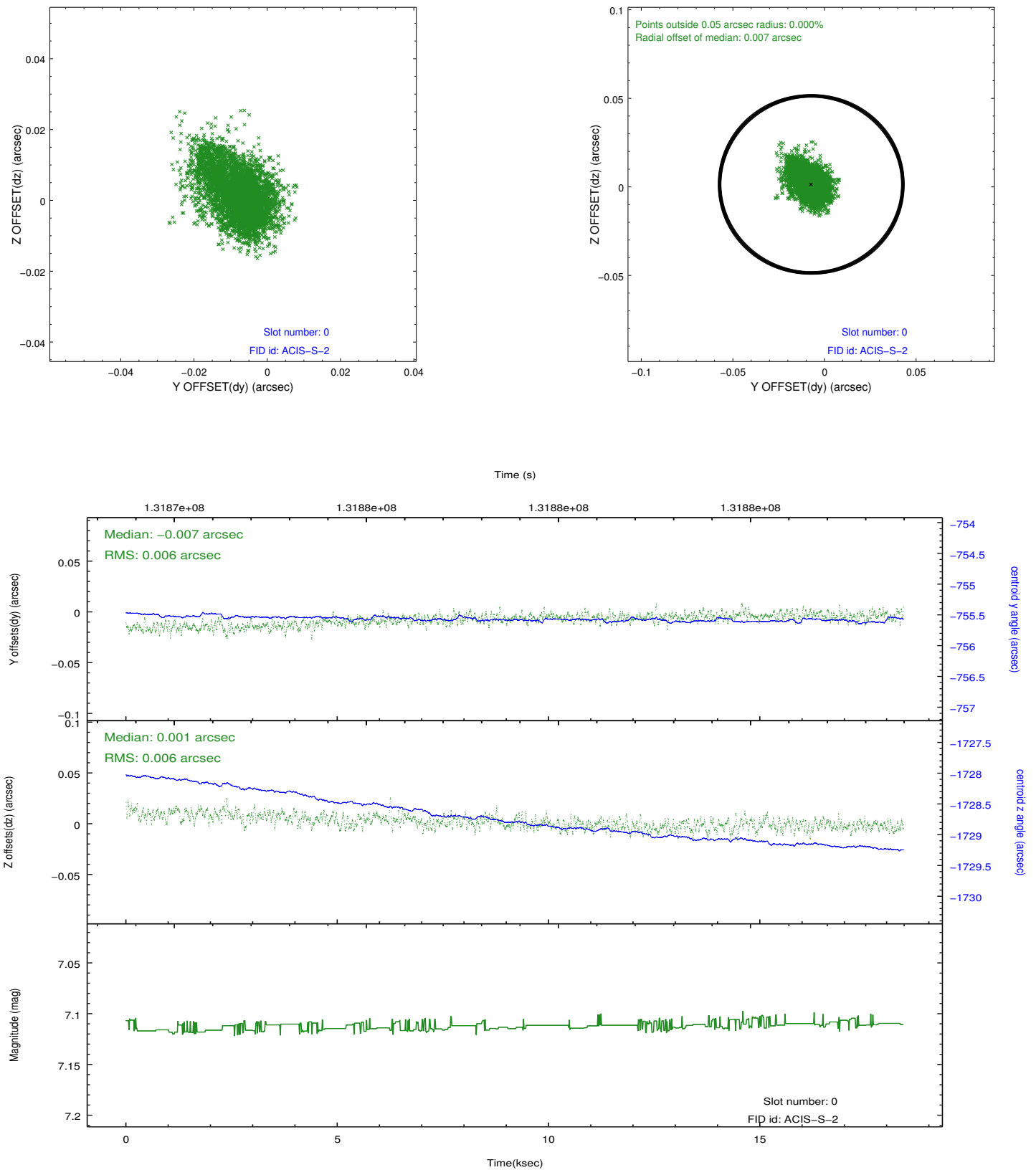


2.4.5 Slot 7

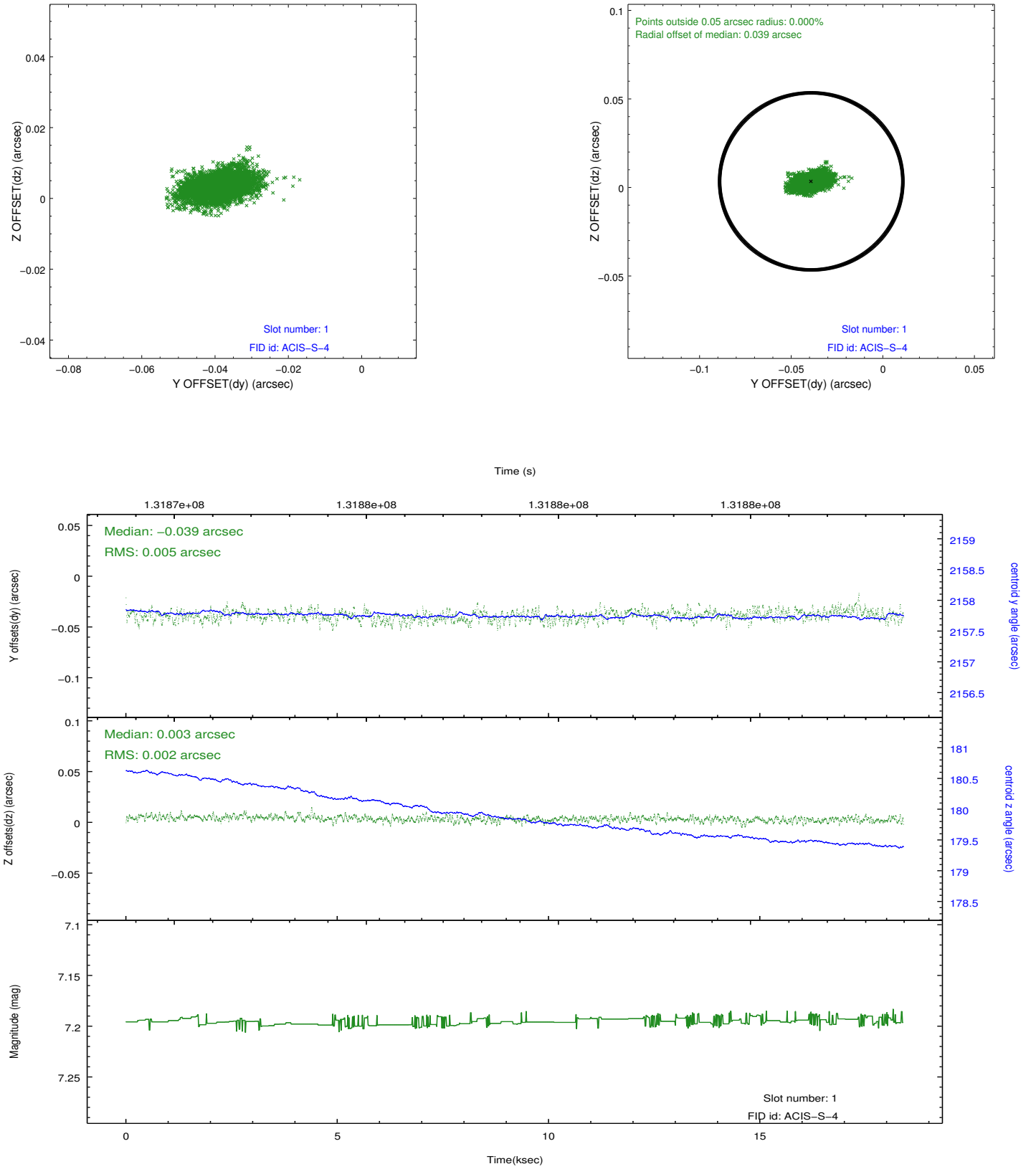


2.5 FID Slots

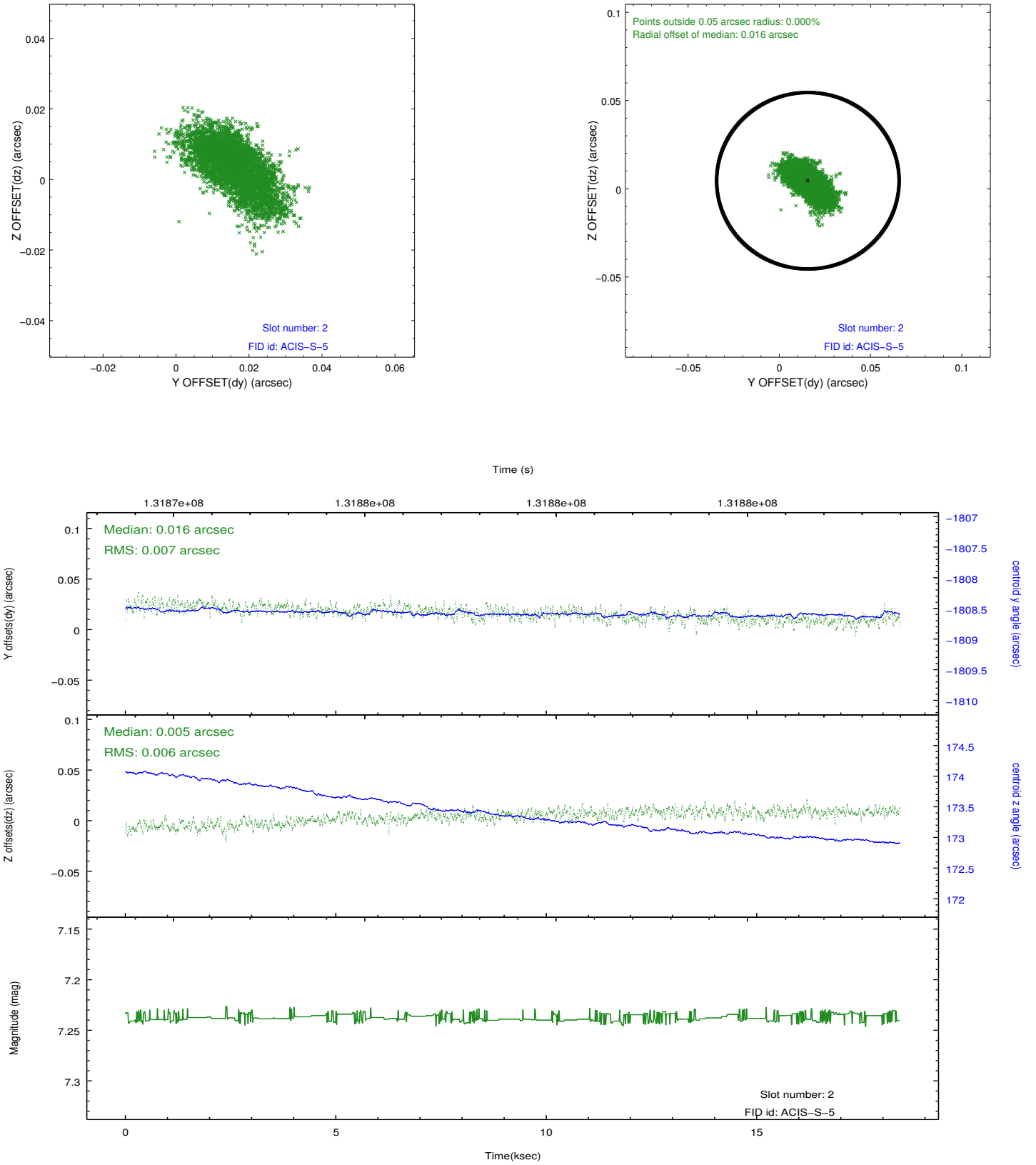
2.5.1 Slot 0



2.5.2 Slot 1



2.5.3 Slot 2



A Summary

A.1 Status

V&V Scientist	Jen Lauer
V&V Date (YYYY-MM-DD)	2012.10.04
V&V Edition	1
V&V Disposition and Status	OK
V&V Charge Time	17.961

A.2 Comments