

V&V Reference Report

L2 ASCDS Version : 7.6.9

Observation 3234 - L2 Version 001
Chandra X-Ray Center

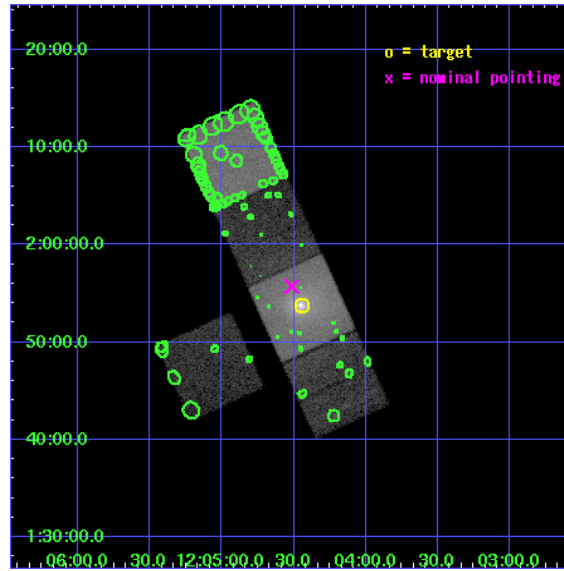
L2 Processing Date : Oct 13 2006

Contents

1	Front	2
2	OBI	3
2.1	OBI	3
2.1.1	Images	3
2.1.2	Bias	3
2.1.3	Parameters	4
2.1.4	Events	4
2.2	Compared Parameters	5
2.3	Aspect	6
2.4	Star Slots	9
2.4.1	Slot 3	9
2.4.2	Slot 4	10
2.4.3	Slot 5	11
2.4.4	Slot 6	12
2.4.5	Slot 7	13
2.5	FID Slots	14
2.5.1	Slot 0	14
2.5.2	Slot 1	15
2.5.3	Slot 2	16
3	Point Sources	17
A	Summary	18
A.1	Status	18
A.2	Comments	18

1 Front

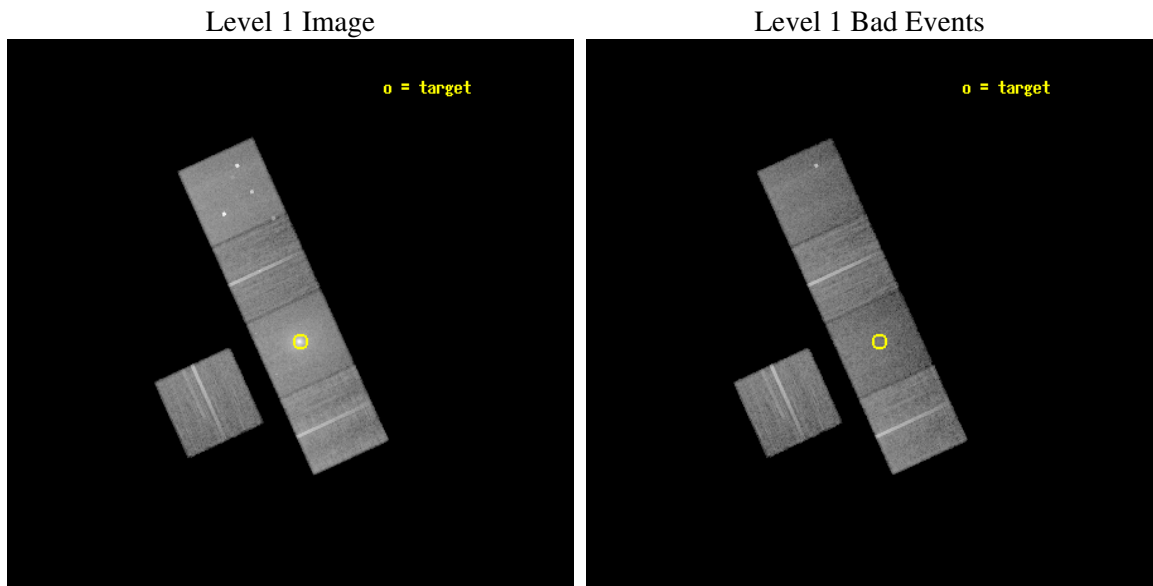
seq_num	800234
obs_id	3234
title	STUDY OF METAL ENRICHMENT PROCESSES AROUND THE CENTRAL GALAXY IN THE MKW4 CLUSTER
observer	DR YASUSHI FUKAZAWA
object	MKW4
dtcycle	0
cycle	P
ra_targ	181.11125
dec_targ	1.895361
ra_nom	181.12838197598
dec_nom	1.9286353505555
roll_nom	65.498053201262
revision	3
ontime	30358.299941629
livetime	29961.646403437
ontime3	30358.299941629
ontime5	30358.299941629
ontime6	30358.299941629
ontime7	30358.299941629
ontime8	30358.299941629
l2events	282667



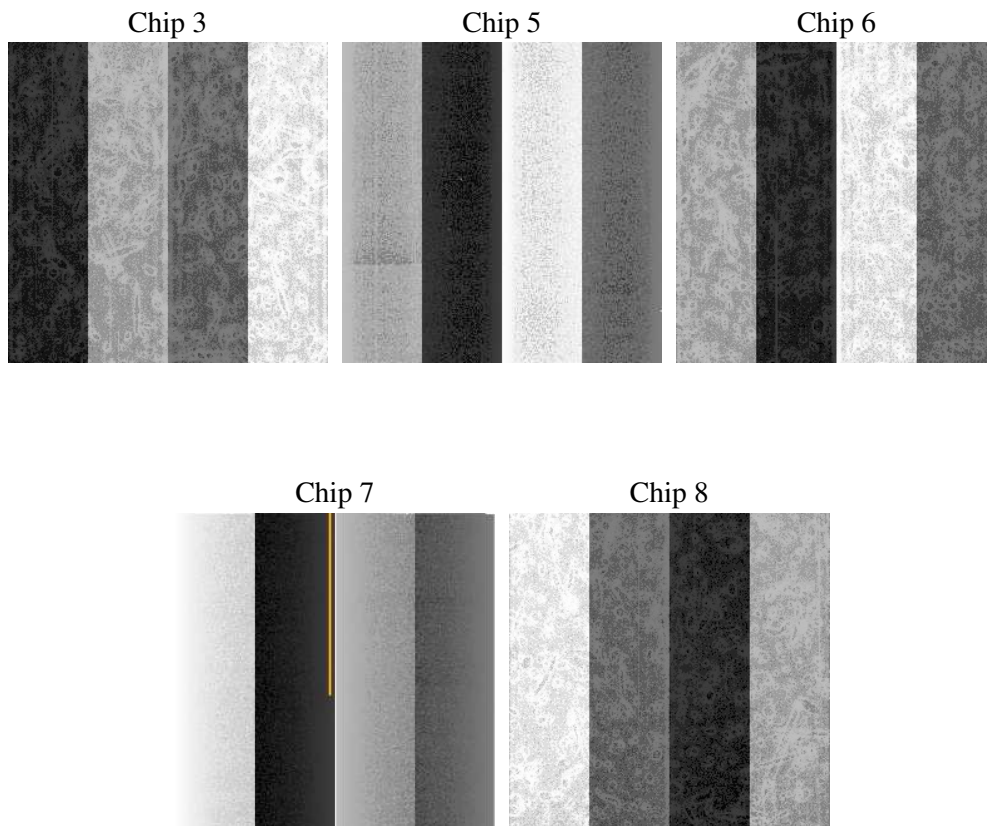
2 OBI

2.1 OBI

2.1.1 Images



2.1.2 Bias



2.1.3 Parameters

obi_num	0
ascdsver	7.6.9
caldbver	3.2.3
date	2006-10-13T15:39:02
revision	3

sched_exp_time	30200.000000
ontime	30439.437617987
ontime3	30439.437617987
ontime5	30439.437617987
ontime6	30439.437617987
ontime7	30439.437617987
ontime8	30439.437617987
l1events	988202

2.1.4 Events

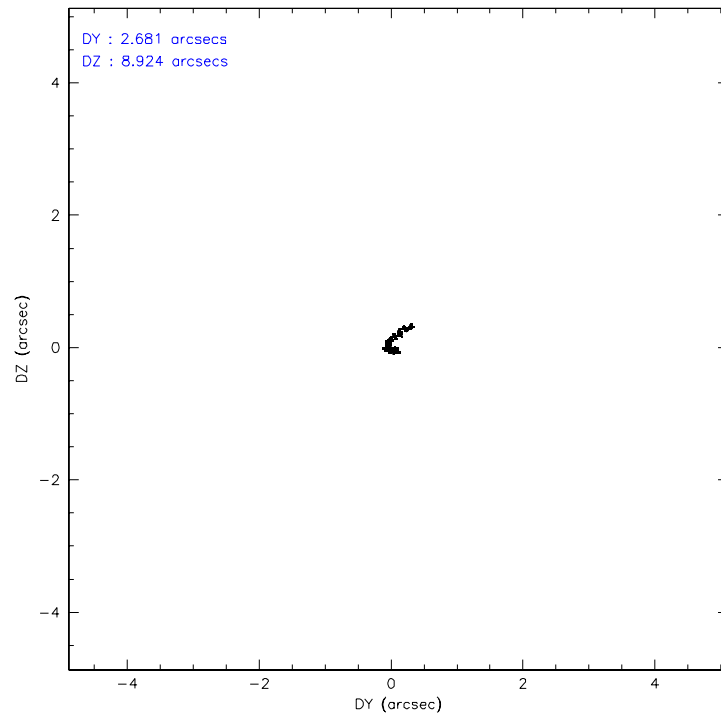
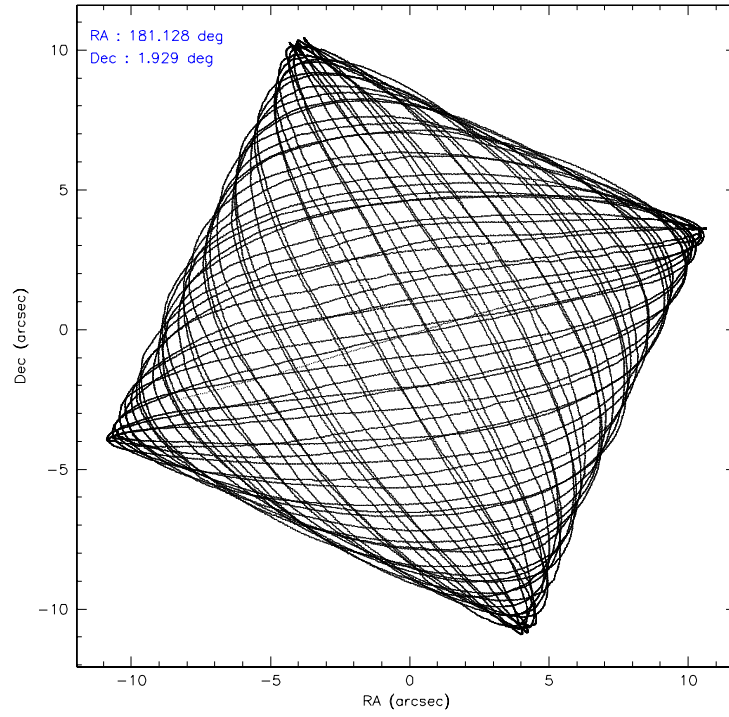
	ccd 3	ccd 5	ccd 6	ccd 7	ccd 8
level 1 events	160963	216401	168038	238873	203927
rejected events	144493	110413	145674	101057	155971
rejected %	89%	51%	86%	42%	76%

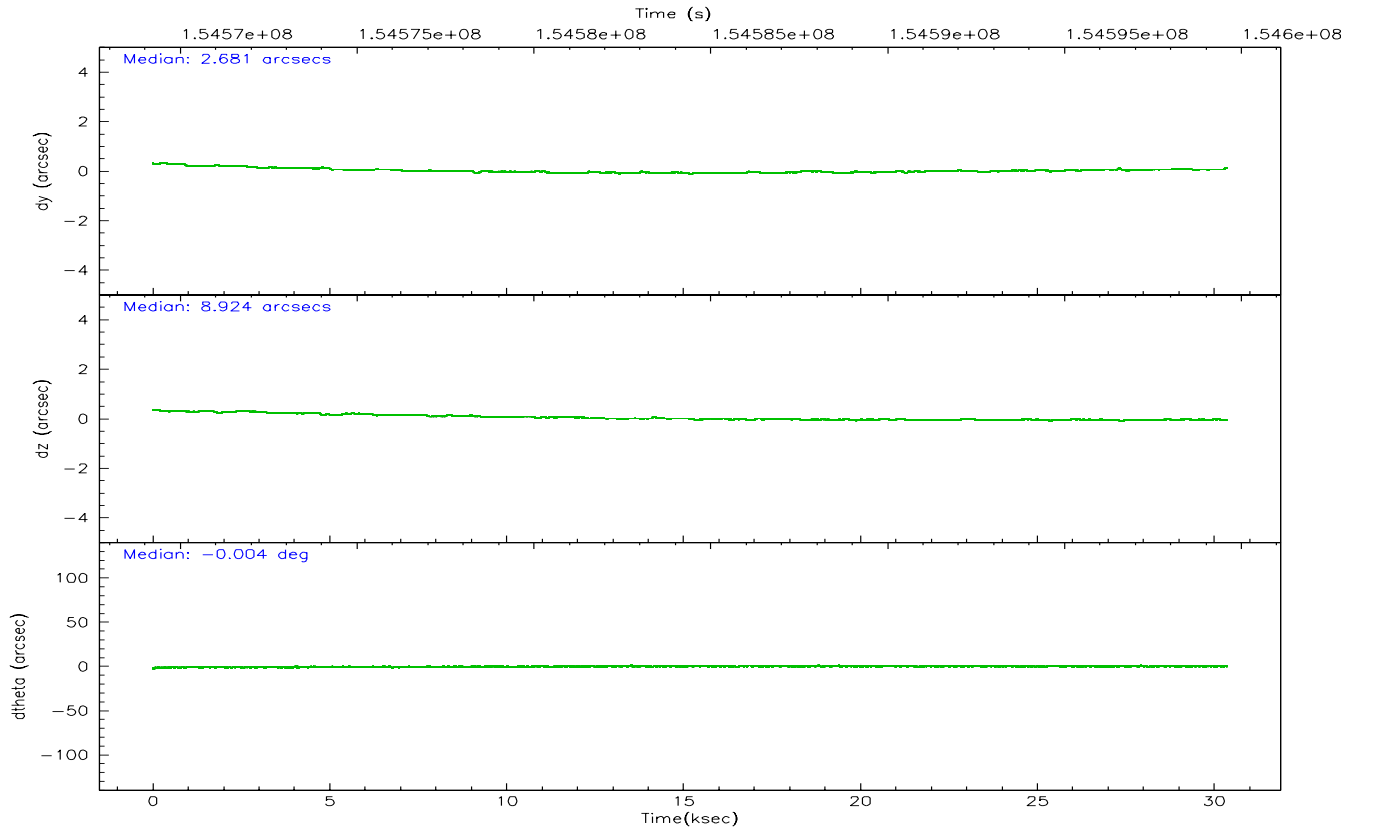
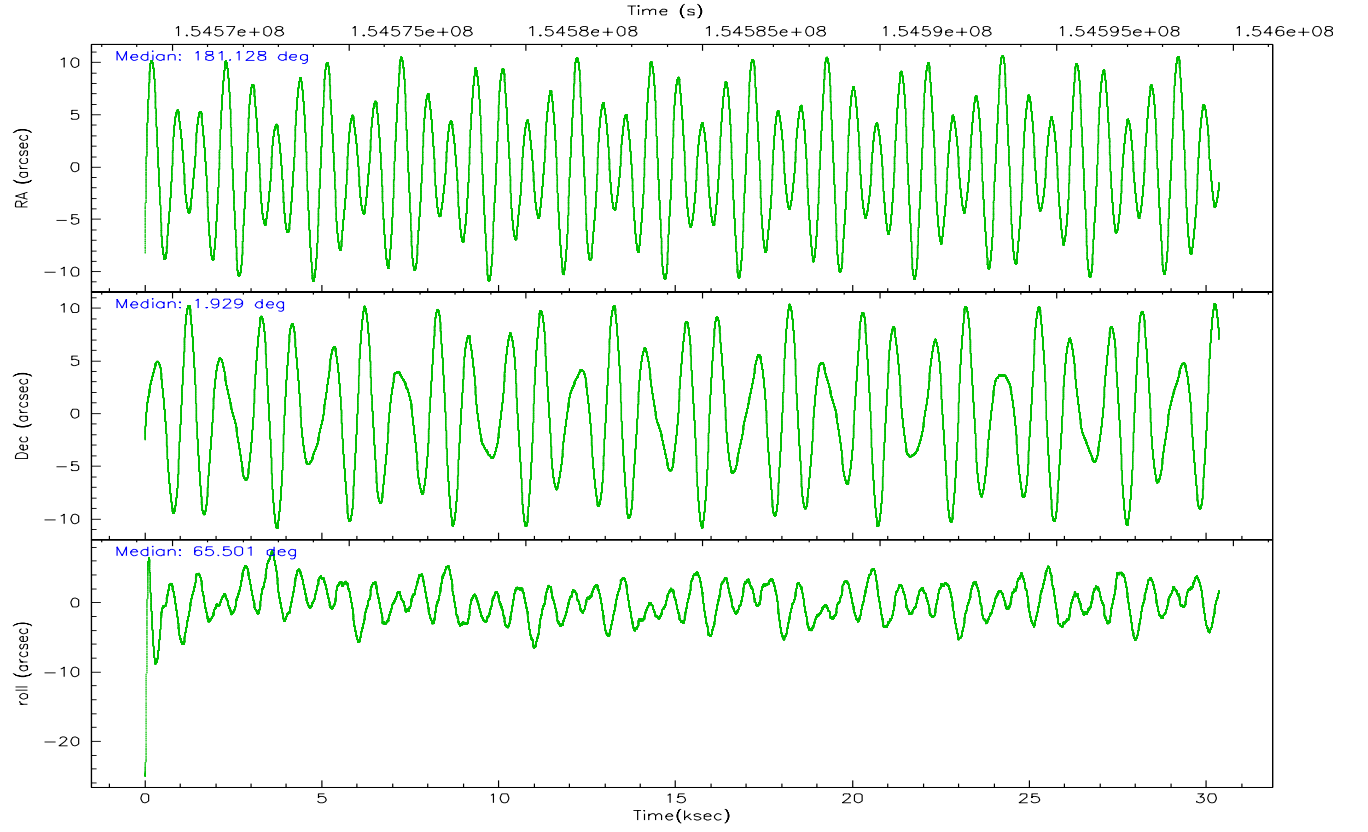
	ccd 3	ccd 5	ccd 6	ccd 7	ccd 8
grade 0 events	6856	12800	10974	24922	16917
	4%	5%	6%	10%	8%
grade 1 events	70	77	78	95	145
	0%	0%	0%	0%	0%
grade 2 events	3207	32598	4106	36465	9803
	1%	15%	2%	15%	4%
grade 3 events	1790	2714	1953	11455	5073
	1%	1%	1%	4%	2%
grade 4 events	1779	2511	1942	11494	4630
	1%	1%	1%	4%	2%
grade 5 events	5959	11436	6113	13451	8648
	3%	5%	3%	5%	4%
grade 6 events	2882	55689	3448	53853	11628
	1%	25%	2%	22%	5%
grade 7 events	138420	98576	139424	87138	147083
	85%	45%	82%	36%	72%

2.2 Compared Parameters

Parameter	Planned	Actual	Parameter	Planned	Actual
Instrument	ACIS	ACIS	Obspar format version number	6	6
Detector	ACIS-35678	ACIS-35678	Obspar file type	PREDICTED	ACTUAL
Grating	NONE	NONE	Obspar update status	NONE	UPDATED
Data mode	VFAINT	VFAINT	Number of optional ACIS chips dropped	0	0
Observation mode	POINTING	POINTING	On-chip summing requested	N	N
Pointing RA	181.131335	181.1283819759816	Subarray requested	NONE	NONE
Pointing Dec	1.901546	1.928635350555477	Alternating exposures requested	N	N
Pointing Roll	65.341343	65.49805320126229	Primary exposure time	0.000000	3.1
SIM focus pos (mm)	-0.684267	-0.6828225247311905			
SIM defocus (mm)	0	0.001444936568705701			
SIM translation stage pos (mm)	-190.132523	-190.1425803651734			
SIM translation stage offset (mm)	0	0.01005778216563158			
Observation start time	154569398.184000	154568371.82134			
Observation start date	2002-11-24T23:55:34	2002-11-24T23:39:31			
Observation end time	154599598.184000	154600662.91018			
Observation end date	2002-11-25T08:18:54	2002-11-25T08:37:42			
Read mode	TIMED	TIMED			

2.3 Aspect



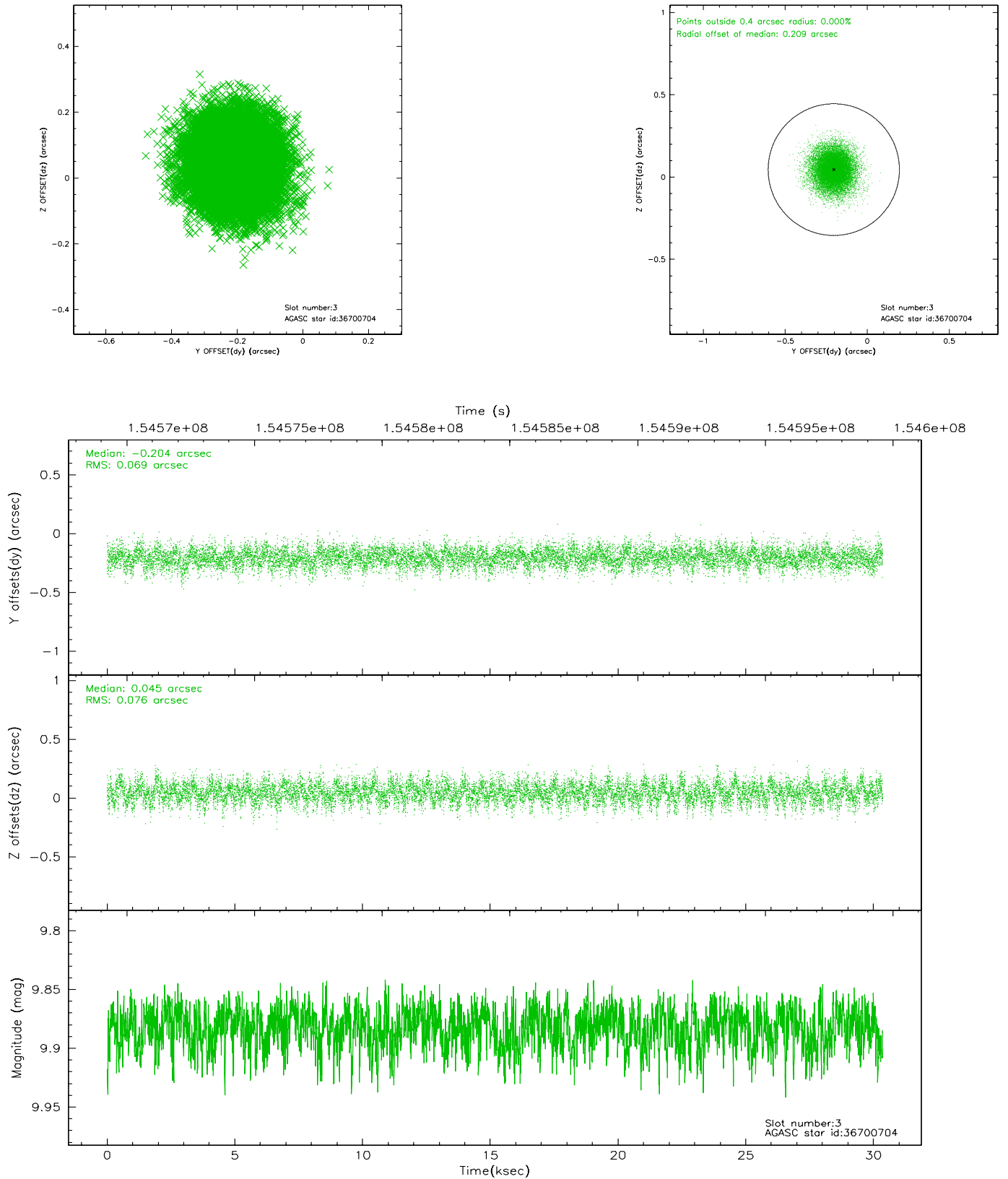


Slot Statistics

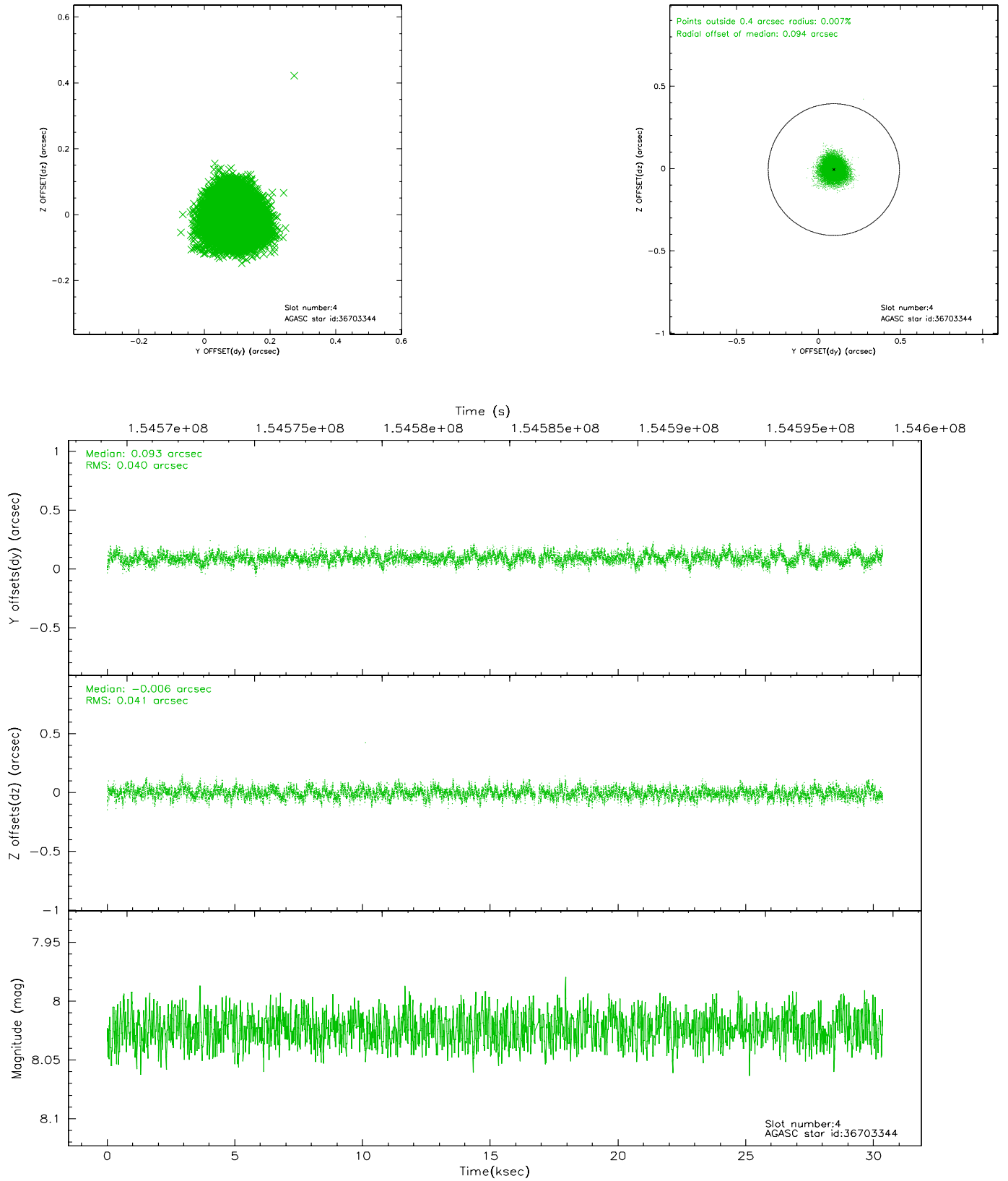
slot	status	id	mag	n_pts	med_dy	med_dz	dr1	dr2	ra	dec	mean_y	mean_z
0	FID	ACIS-S-2	7.11	7406	-0.013	0.019	0.007	0.012	0.000000	0.000000	-755.35	-1730.13
1	FID	ACIS-S-4	7.20	7404	-0.051	0.001	0.007	0.016	0.000000	0.000000	2157.85	178.27
2	FID	ACIS-S-5	7.24	7404	0.032	-0.011	0.007	0.012	0.000000	0.000000	-1808.06	172.00
3	GUIDE	36700704	9.88	14789	-0.204	0.045	0.109	0.177	181.490734	2.322169	1915.43	-543.32
4	GUIDE	36703344	8.02	14744	0.093	-0.006	0.061	0.099	181.053552	1.462035	-1554.70	-405.56
5	GUIDE	36704712	10.31	14621	-0.005	-0.018	0.164	0.283	181.473769	1.987329	794.60	-991.14
6	GUIDE	36705344	9.19	14805	-0.006	0.094	0.120	0.201	181.461691	1.305507	-1453.97	-1975.59
7	GUIDE	36706960	9.87	14632	0.125	-0.128	0.151	0.245	181.319374	1.706880	-354.68	-907.46

2.4 Star Slots

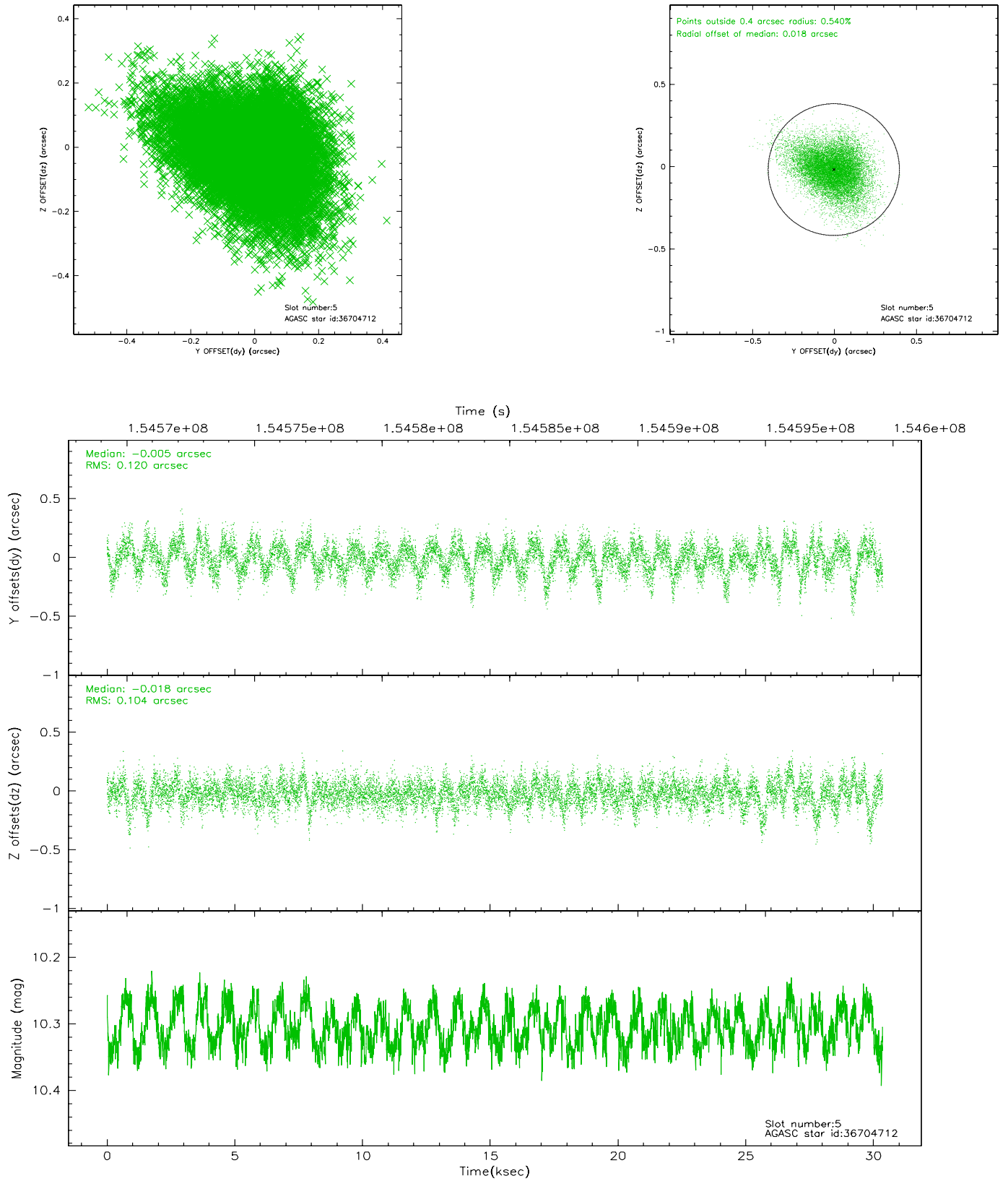
2.4.1 Slot 3



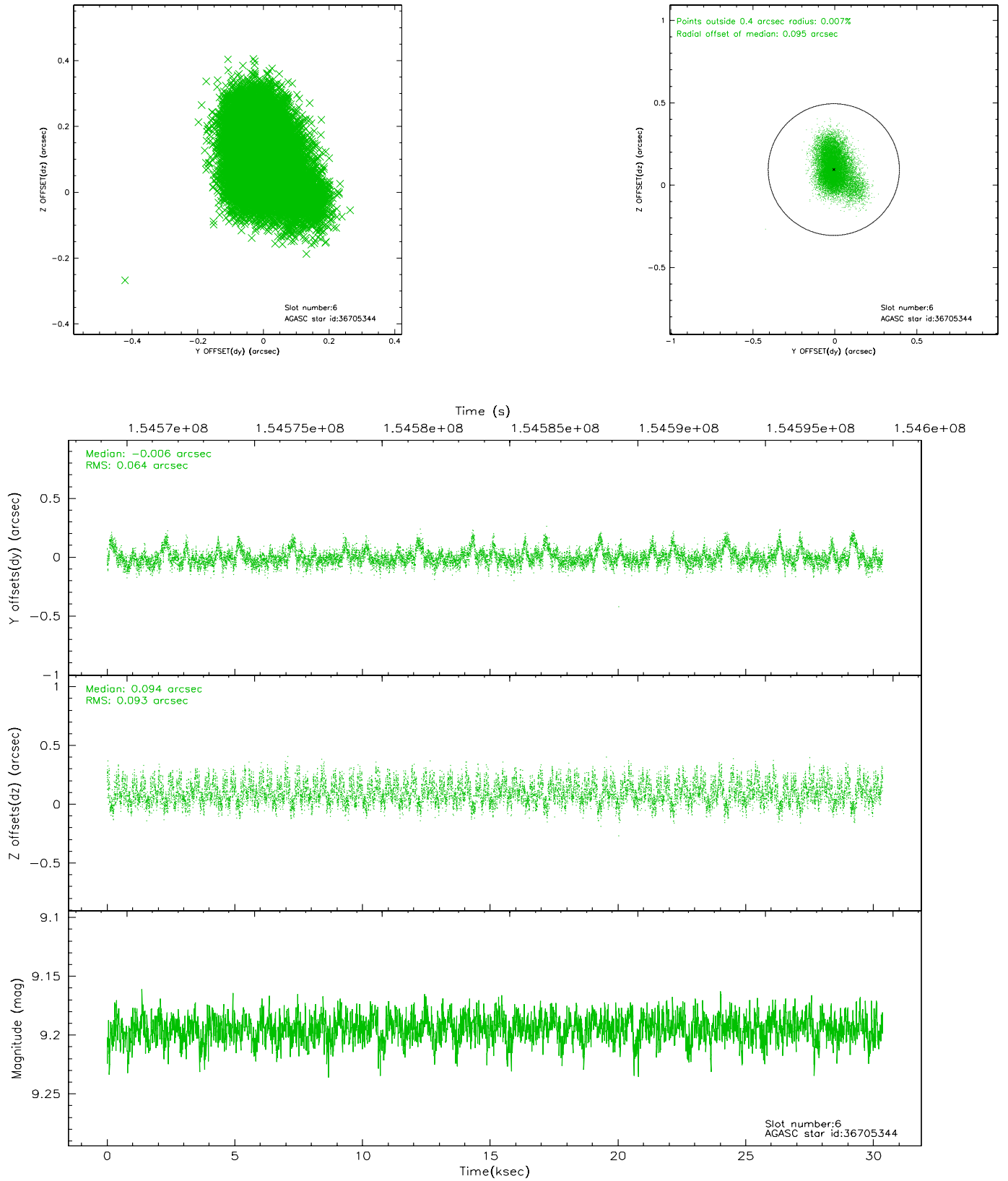
2.4.2 Slot 4



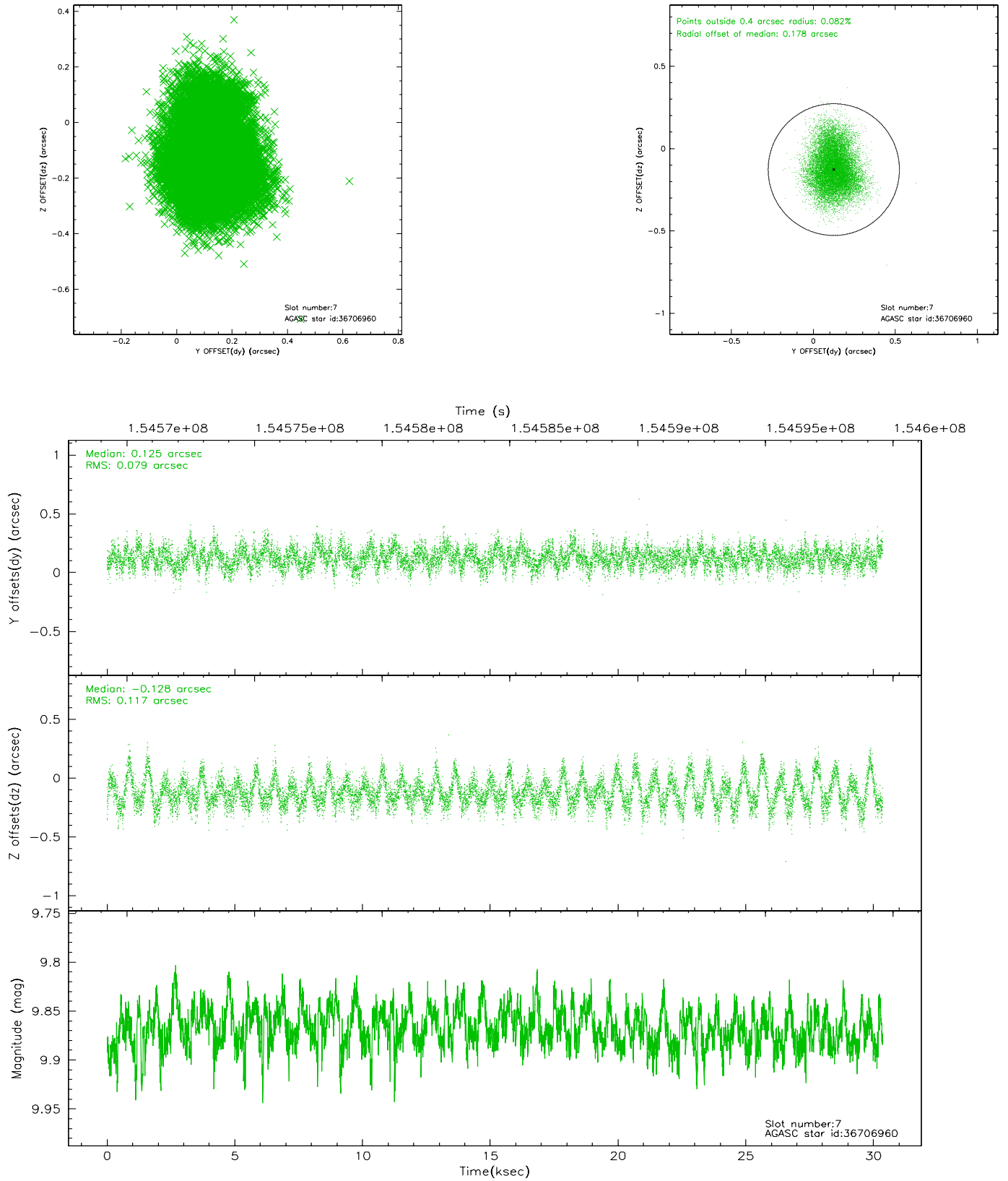
2.4.3 Slot 5



2.4.4 Slot 6

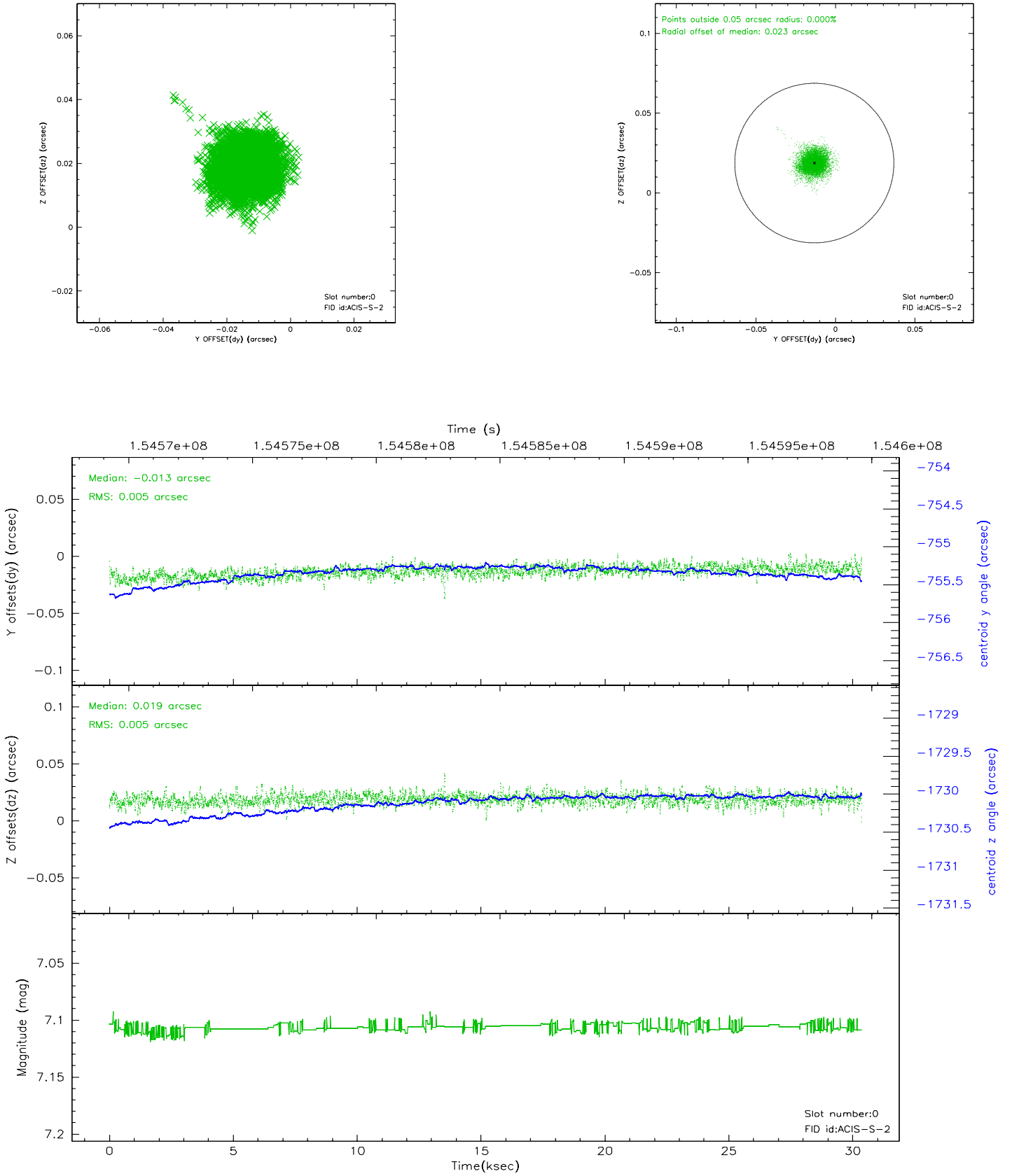


2.4.5 Slot 7

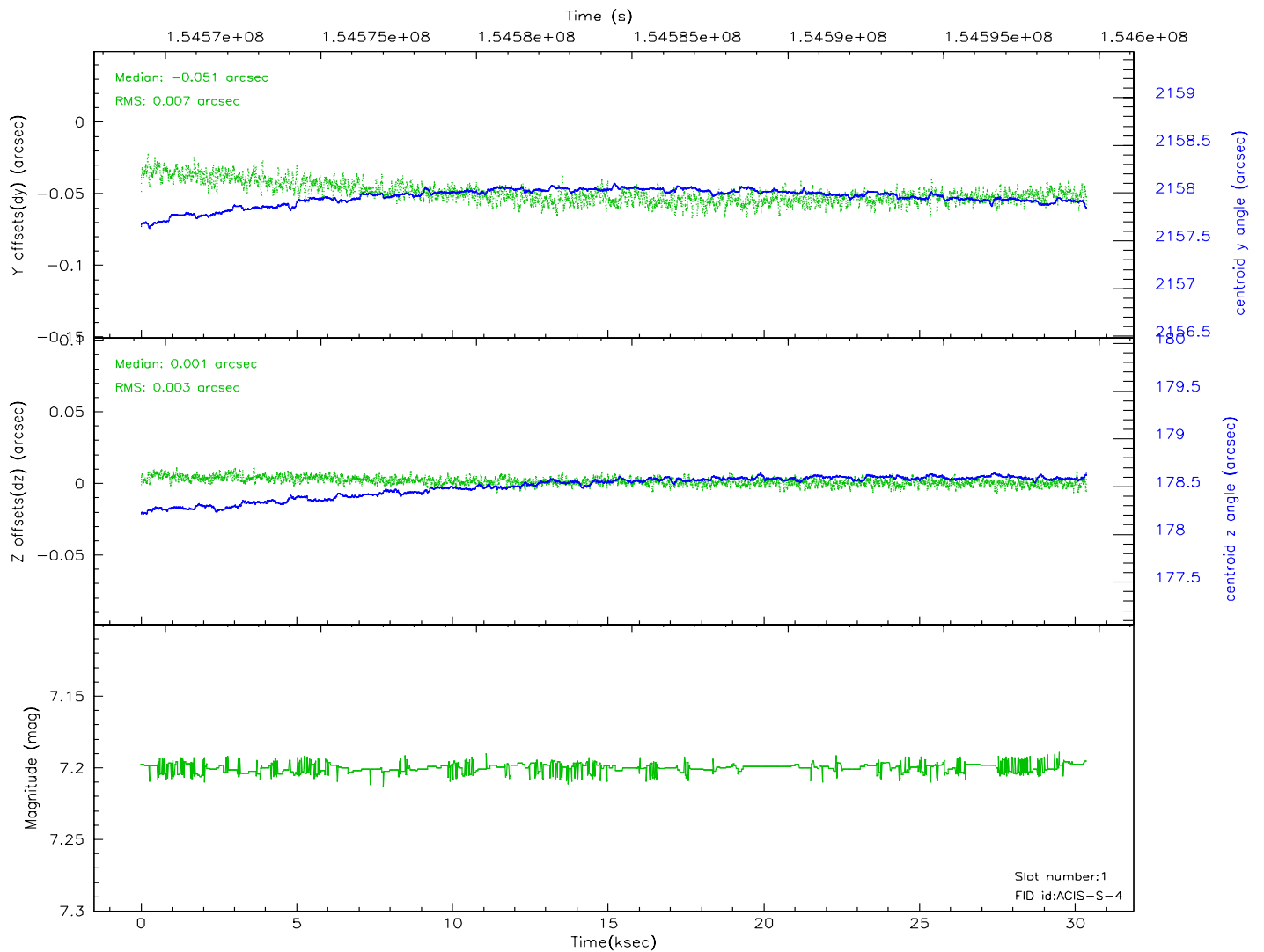
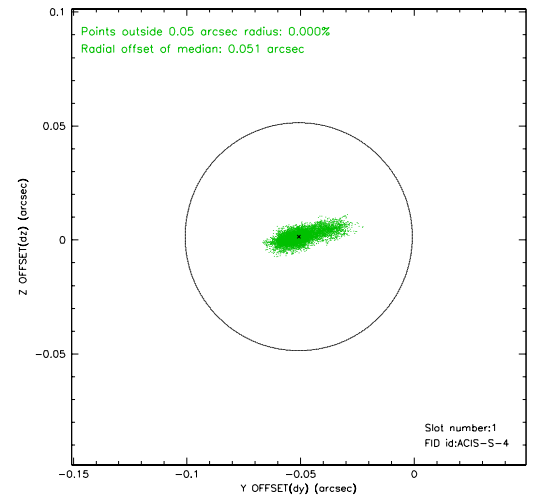
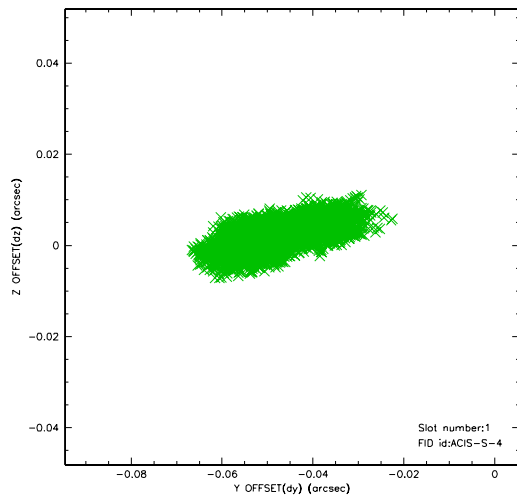


2.5 FID Slots

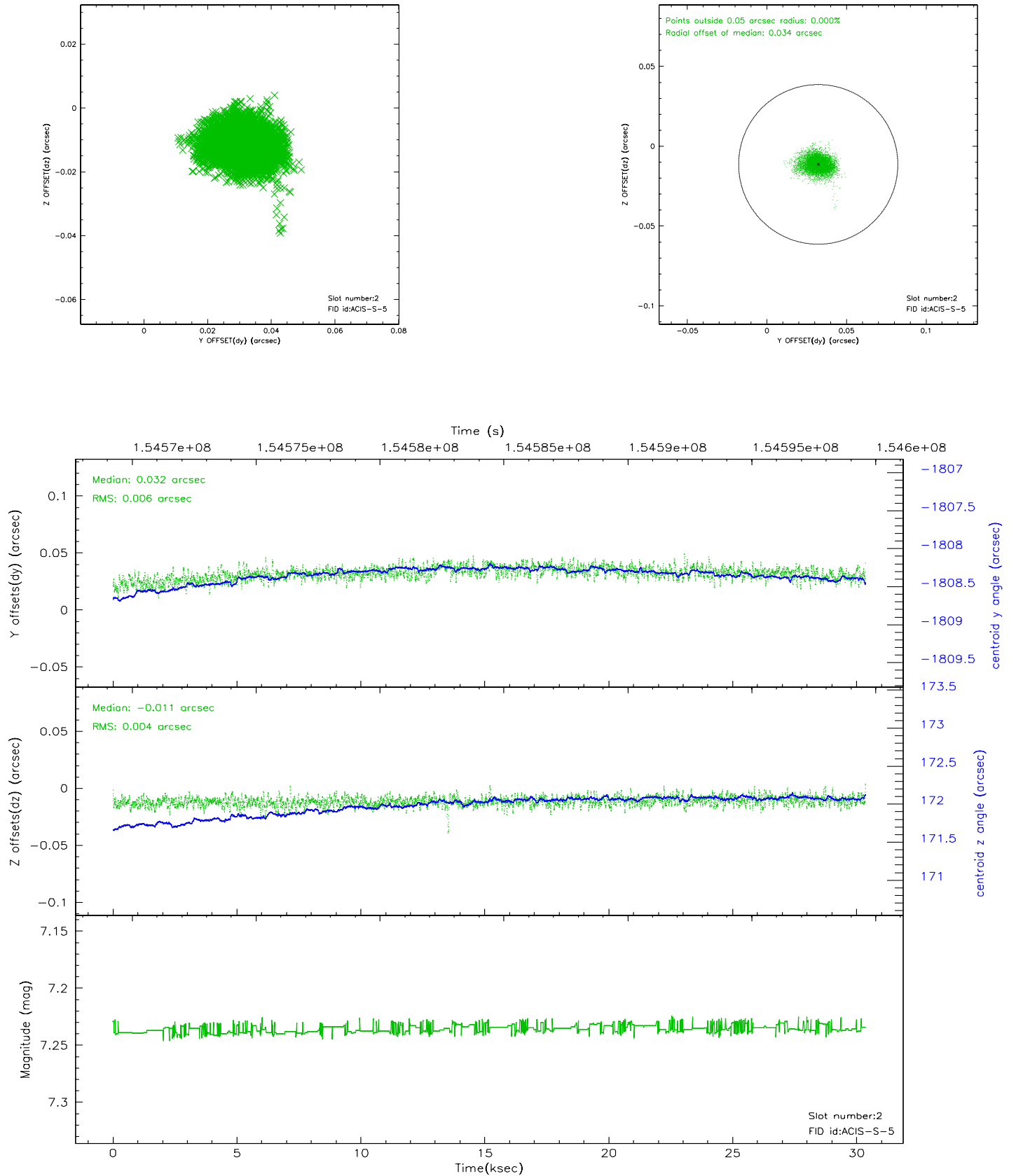
2.5.1 Slot 0



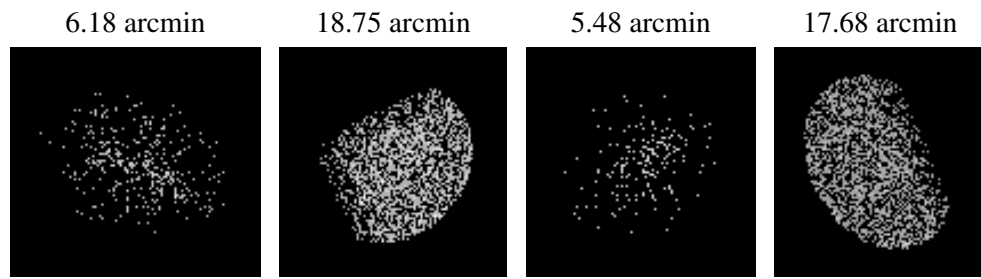
2.5.2 Slot 1



2.5.3 Slot 2



3 Point Sources



A Summary

A.1 Status

V&V Scientist	Beth Sundheim
V&V Date (YYYY-MM-DD)	2006.10.13
V&V Edition	1
V&V Disposition and Status	OK
V&V Charge Time	30.358

A.2 Comments