

# V&V Reference Report

## L2 ASCDS Version : 8.4.5

Observation 3224 - L2 Version 3  
Chandra X-Ray Center

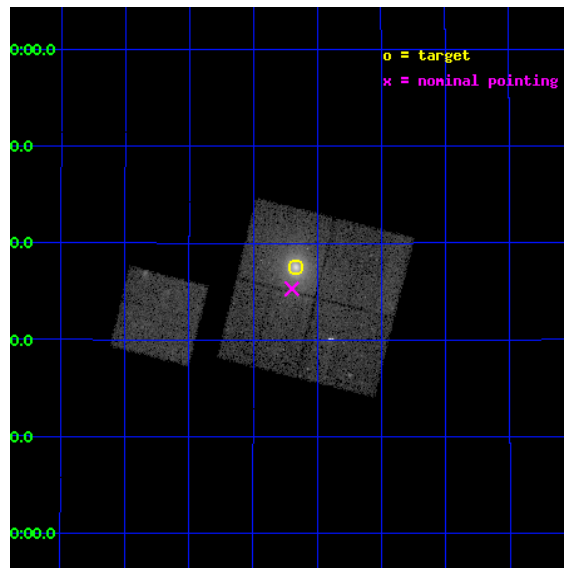
L2 Processing Date : Oct 15 2012

## Contents

<b>1</b>	<b>Front</b>	<b>2</b>
<b>2</b>	<b>OBI</b>	<b>3</b>
2.1	OBI . . . . .	3
2.1.1	Images . . . . .	3
2.1.2	Bias . . . . .	3
2.1.3	Parameters . . . . .	4
2.1.4	Events . . . . .	4
2.2	Compared Parameters . . . . .	5
2.3	Aspect . . . . .	6
2.4	Star Slots . . . . .	9
2.4.1	Slot 3 . . . . .	9
2.4.2	Slot 4 . . . . .	10
2.4.3	Slot 5 . . . . .	11
2.4.4	Slot 6 . . . . .	12
2.4.5	Slot 7 . . . . .	13
2.5	FID Slots . . . . .	14
2.5.1	Slot 0 . . . . .	14
2.5.2	Slot 1 . . . . .	15
2.5.3	Slot 2 . . . . .	16
<b>A</b>	<b>Summary</b>	<b>17</b>
A.1	Status . . . . .	17
A.2	Comments . . . . .	17

# 1 Front

seq_num	800224	Sequence number
obs_id	3224	Observation id
title	RXJ1720.1+2638: A NEARLY RELAXED CLUSTER WITH A FAST MOVING CORE?	&#160
observer	Dr. Pasquale Mazzotta	Principal investigator
object	RXJ1720.1+2638	Source name
dtcycle	0	&#160
cycle	P	events from which exps? Prim/Second/Both
ra_targ	260.0413	Observer's specified target RA [deg]
dec_targ	26.625	Observer's specified target Dec [deg]
ra_nom	260.04942684541	Nominal RA [deg]
dec_nom	26.588045121066	Nominal Dec [deg]
roll_nom	284.09227044347	Nominal Roll [deg]
revision	3	Processing version of data
ontime	24133.376973093	Sum of GTIs [s]
livetime	23818.056636205	Livetime [s]
ontime0	24142.79995355	Sum of GTIs [s]
ontime1	24139.658963412	Sum of GTIs [s]
ontime2	24136.518023133	Sum of GTIs [s]
ontime3	24133.376973093	Sum of GTIs [s]
ontime6	24142.79995355	Sum of GTIs [s]
l2events	119221	Number of level 2 events

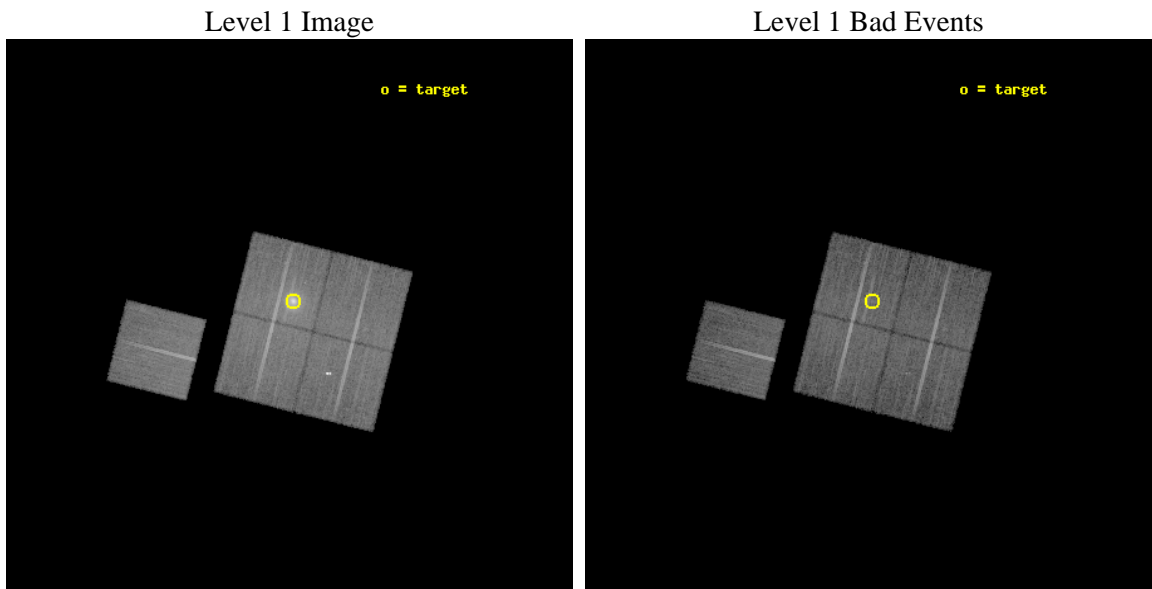




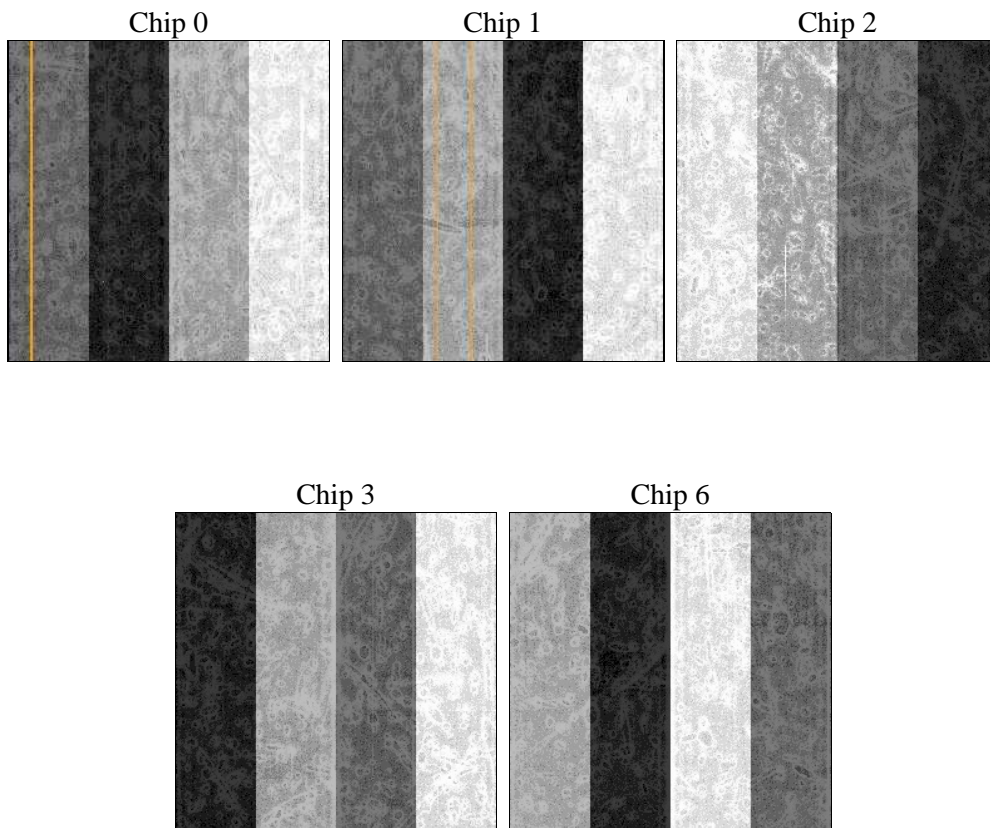
## 2 OBI

### 2.1 OBI

#### 2.1.1 Images



#### 2.1.2 Bias



### 2.1.3 Parameters

obi_num	1	Obi number	sched_exp_time	24000.000000	[s] Scheduled observation exposure time
ascdsver	8.4.5	Processing system revision	ontime	24133.376973093	Sum of GTIs [s]
caldsver	4.5.2	&#160	ontime0	24142.79995355	Sum of GTIs [s]
date	2012-10-15T13:04:17	Date and time of file creation	ontime1	24139.658963412	Sum of GTIs [s]
revision	3	Processing version of data	ontime2	24136.518023133	Sum of GTIs [s]
			ontime3	24133.376973093	Sum of GTIs [s]
			ontime6	24142.79995355	Sum of GTIs [s]
			l1events	717378	Number of level 1 events

### 2.1.4 Events

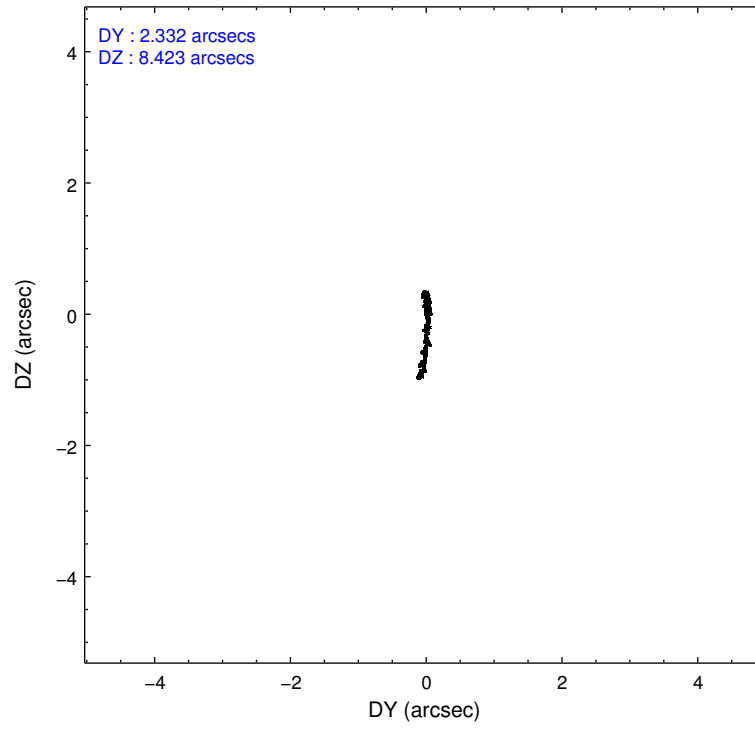
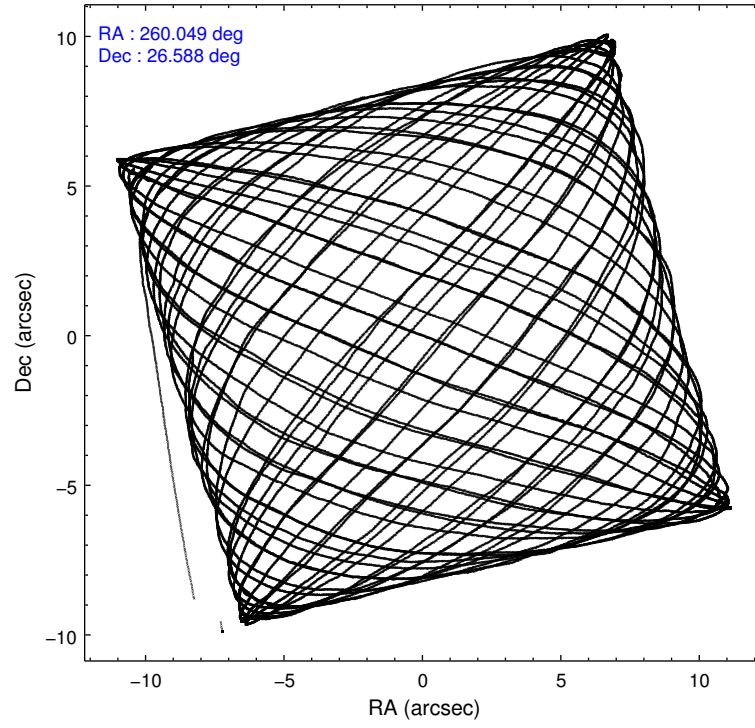
	ccd 0	ccd 1	ccd 2	ccd 3	ccd 6
level 1 events	136224	126401	139672	179766	135315
rejected events	111081	109409	123742	122416	118596
rejected %	81%	86%	88%	68%	87%

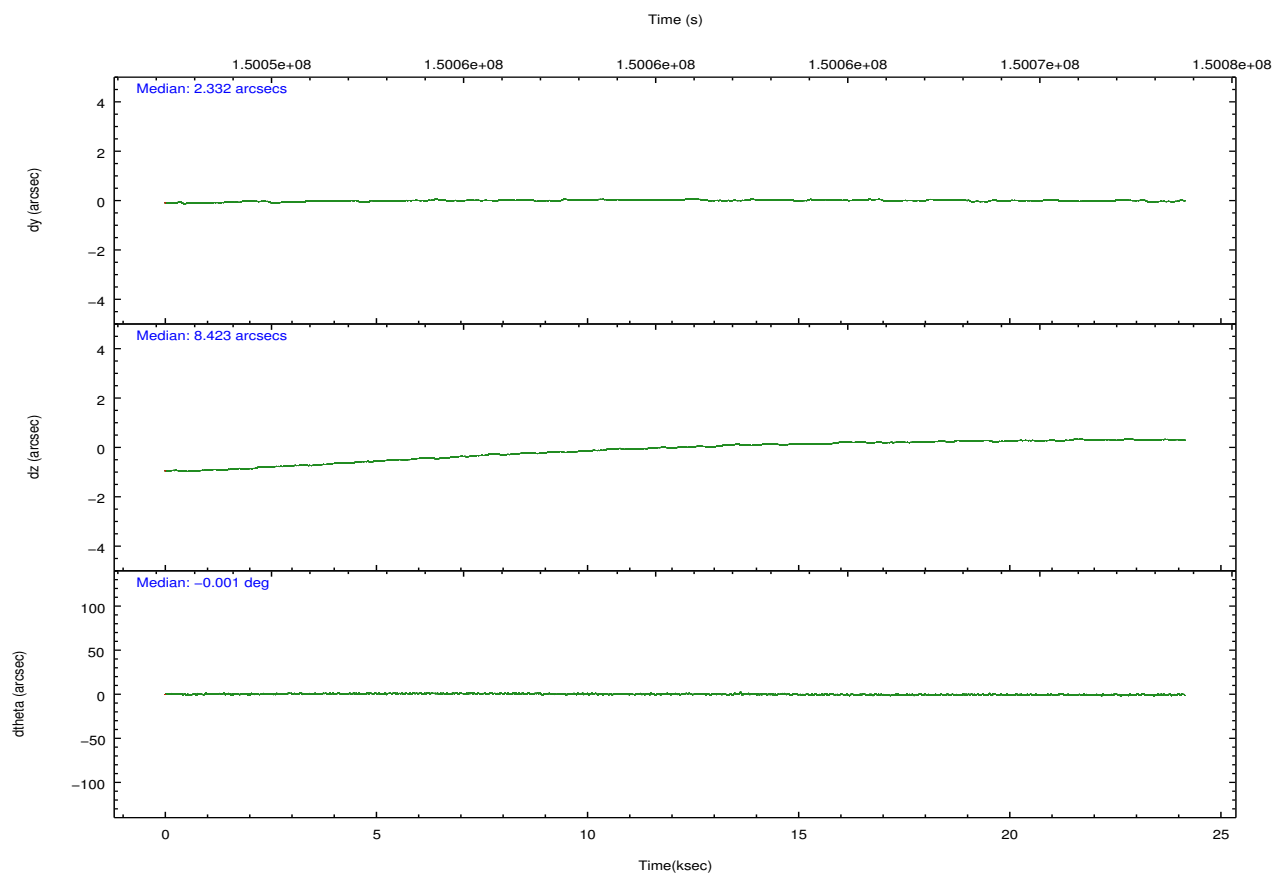
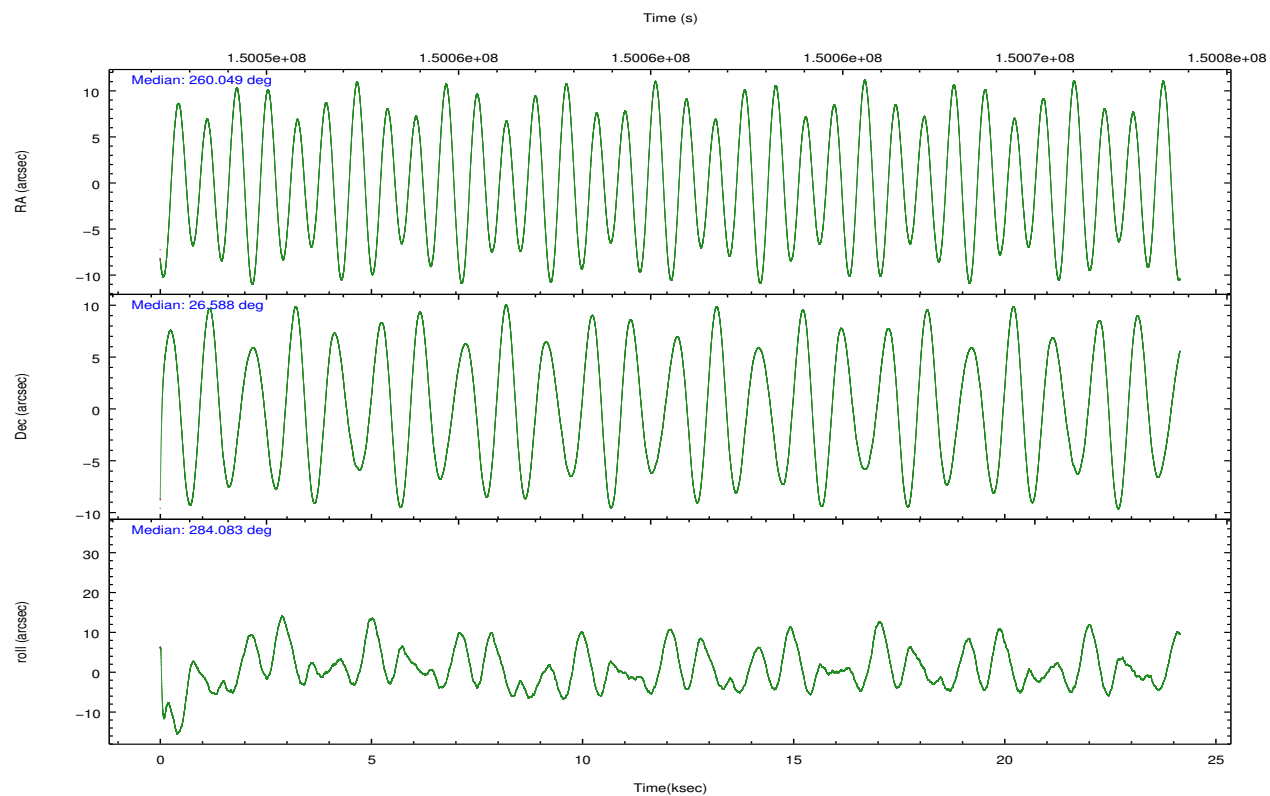
	ccd 0	ccd 1	ccd 2	ccd 3	ccd 6
grade 0 events	15637	7758	7692	42395	8254
	11%	6%	5%	23%	6%
grade 1 events	220	81	82	250	61
	0%	0%	0%	0%	0%
grade 2 events	4064	3331	3348	6833	3029
	2%	2%	2%	3%	2%
grade 3 events	1826	1739	1516	2739	1624
	1%	1%	1%	1%	1%
grade 4 events	1553	1758	1543	2712	1494
	1%	1%	1%	1%	1%
grade 5 events	4503	4824	4064	5185	4872
	3%	3%	2%	2%	3%
grade 6 events	2566	2877	2258	3424	2795
	1%	2%	1%	1%	2%
grade 7 events	105855	104033	119169	116228	113186
	77%	82%	85%	64%	83%

## 2.2 Compared Parameters

Parameter	Planned	Actual	Parameter	Planned	Actual
Instrument	ACIS	ACIS	Obspar format version number	7	7
Detector	ACIS-01236	ACIS-01236	Obspar file type	PREDICTED	ACTUAL
Grating	NONE	NONE	Obspar update status	NONE	UPDATED
Data mode	VFAINT	VFAINT	Number of optional ACIS chips dropped	0	0
Observation mode	POINTING	POINTING	On-chip summing requested	N	N
[deg] Pointing RA	260.028048	260.0494268454068	Subarray requested	NONE	NONE
[deg] Pointing Dec	26.607648	26.58804512106559	Alternating exposures requested	N	N
[deg] Pointing Roll	283.893147	284.0922704434744	[s] Primary exposure time	0.000000	3.1
[mm] SIM focus pos	-0.782348	-0.7809083437167272			
[mm] SIM defocus	0	0.001439871863259334			
[mm] SIM translation stage pos	-227.592463	-227.5933067819097			
[mm] SIM translation stage offset	-6	-5.999146221020027			
[s] Observation start time (MET)	150048580.184000	150047192.47101			
Observation start date	2002-10-03T16:08:36	2002-10-03T15:46:32			
[s] Observation end time (MET)	150072580.184000	150073133.68459			
Observation end date	2002-10-03T22:48:36	2002-10-03T22:58:53			
Read mode	TIMED	TIMED			

## 2.3 Aspect



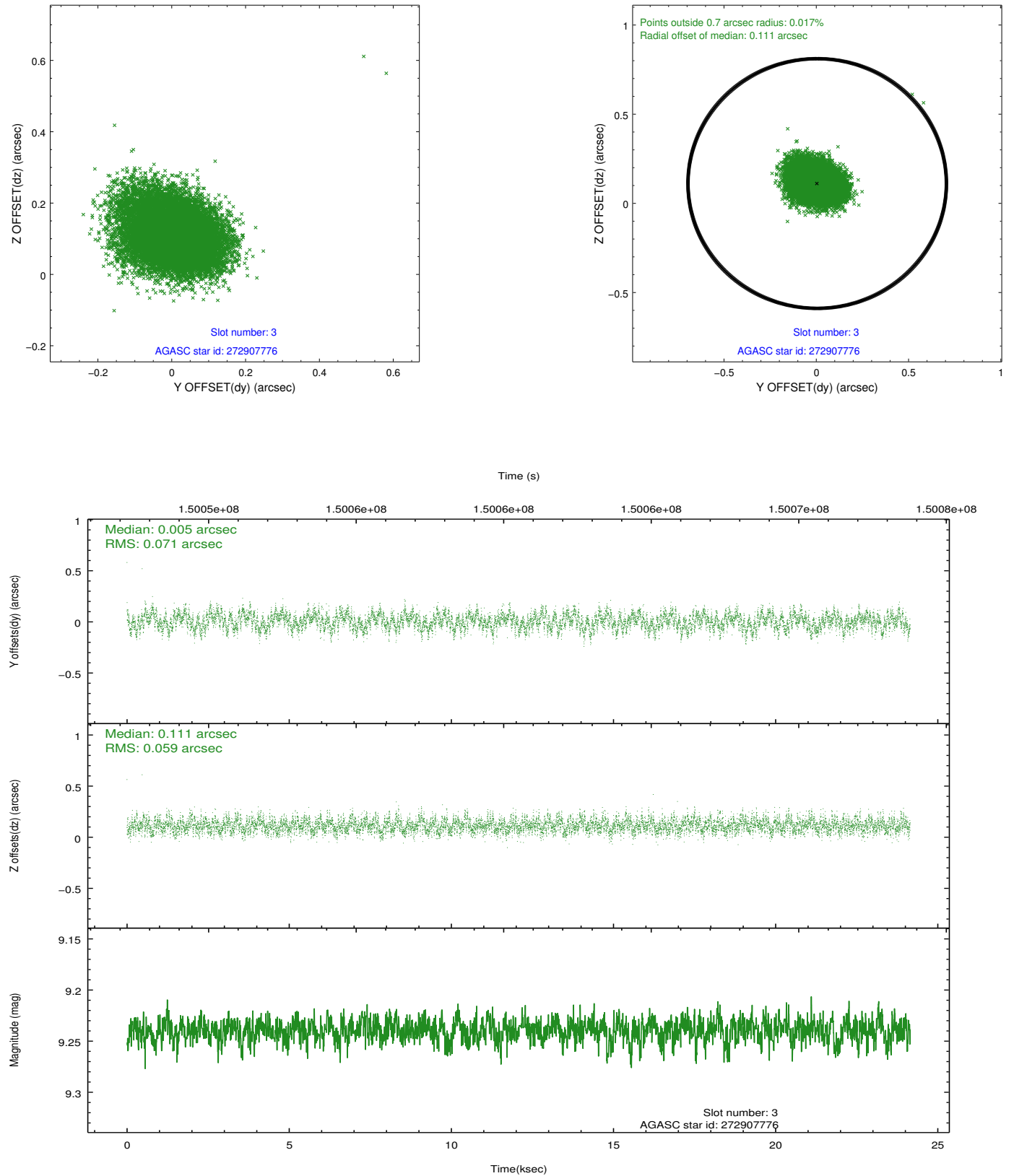


### Slot Statistics

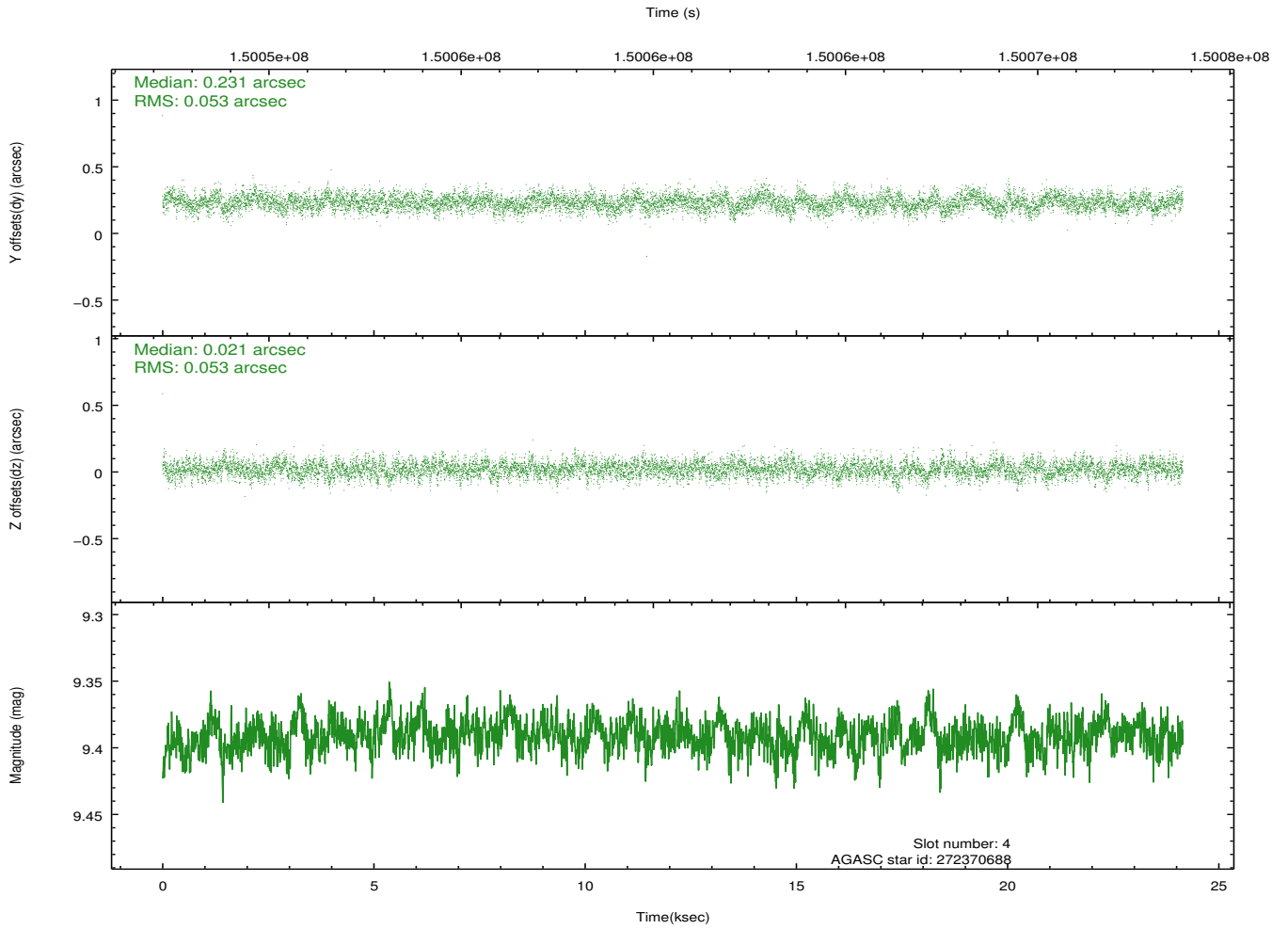
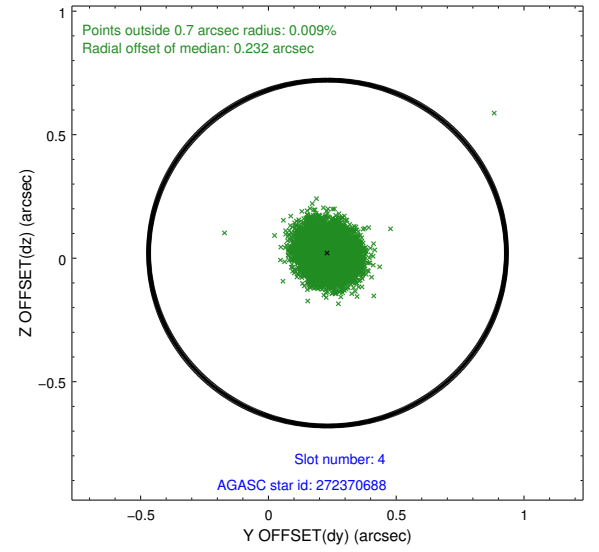
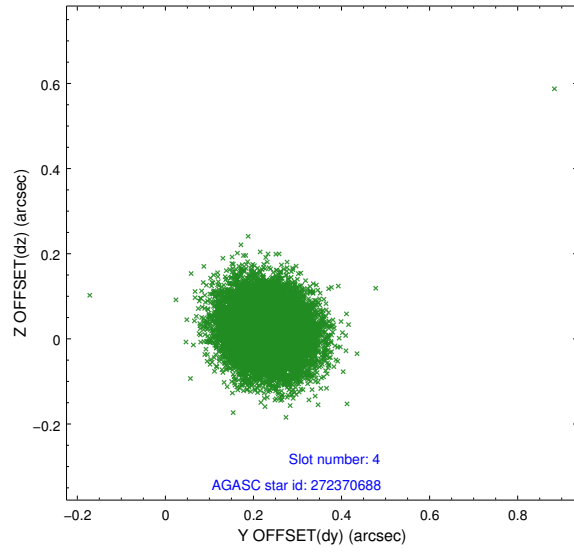
slot	status	id	mag	n_pts	med_dy	med_dz	dr1	dr2	ra	dec	mean_y	mean_z
0	FID	ACIS-I-1	7.23	5891	0.074	-0.056	0.011	0.018	0.000000	0.000000	937.42	-954.93
1	FID	ACIS-I-5	7.24	5891	-0.142	0.093	0.008	0.014	0.000000	0.000000	-1810.78	942.69
2	FID	ACIS-I-6	7.25	5891	-0.024	0.033	0.010	0.017	0.000000	0.000000	402.79	1587.23
3	GUIDE	272907776	9.24	11776	0.005	0.111	0.098	0.160	260.539378	26.537075	639.51	1539.11
4	GUIDE	272370688	9.39	11743	0.231	0.021	0.079	0.129	260.078386	26.214743	1413.28	-180.99
5	GUIDE	270670080	9.99	11769	-0.141	0.006	0.119	0.198	259.409831	26.233523	824.71	-2259.67
6	GUIDE	271193792	9.98	11760	-0.024	-0.100	0.108	0.175	259.456077	26.785272	-1064.91	-1629.92
7	GUIDE	272911104	8.60	11780	-0.069	-0.042	0.071	0.117	260.699049	26.523786	806.96	2027.35

## 2.4 Star Slots

### 2.4.1 Slot 3

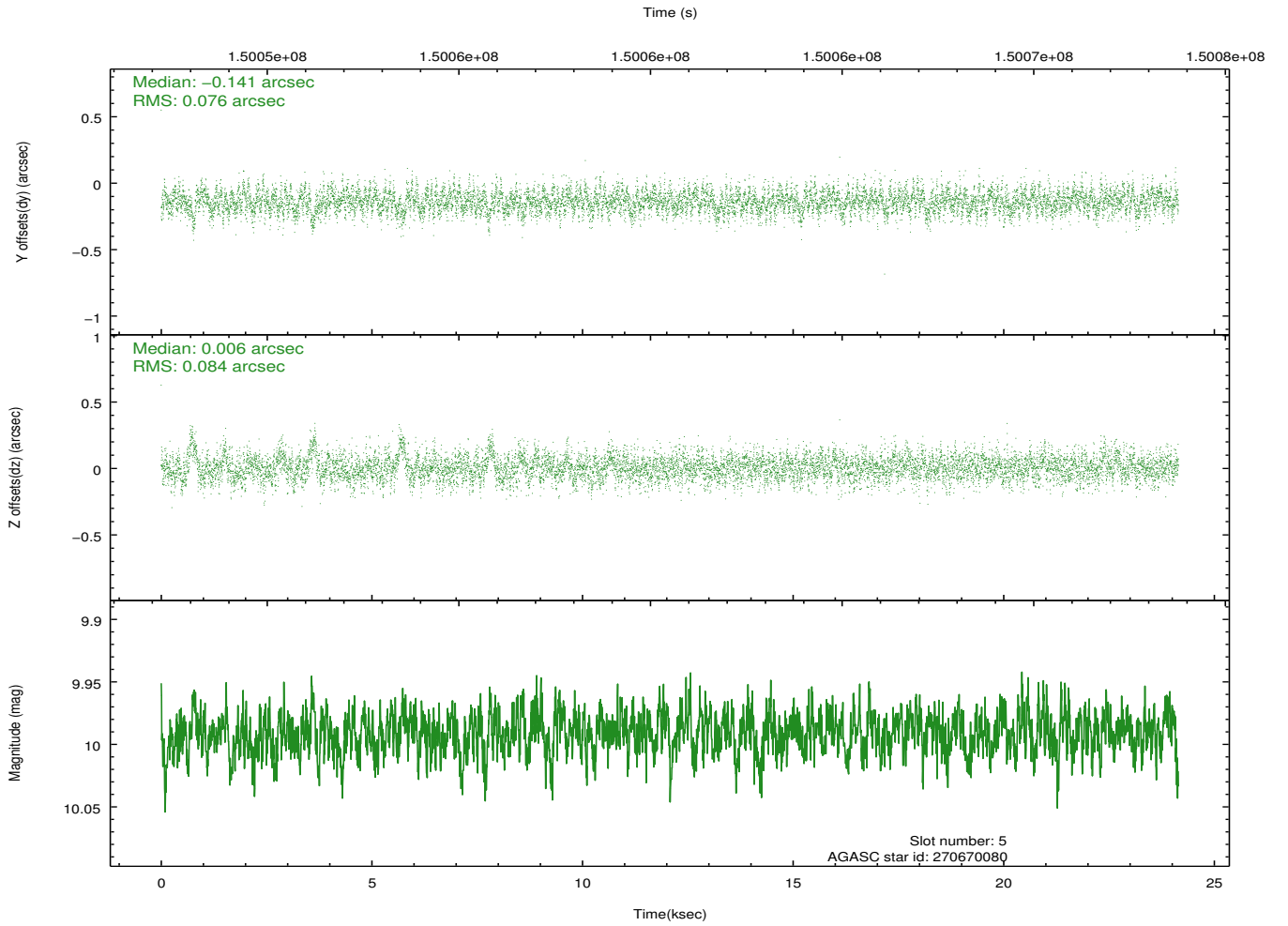
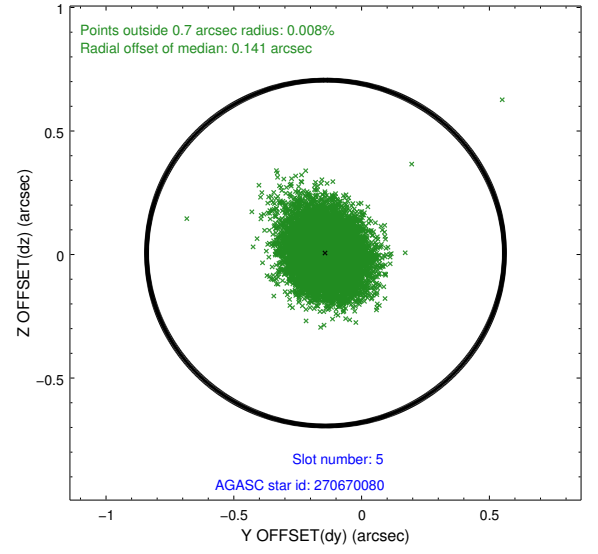
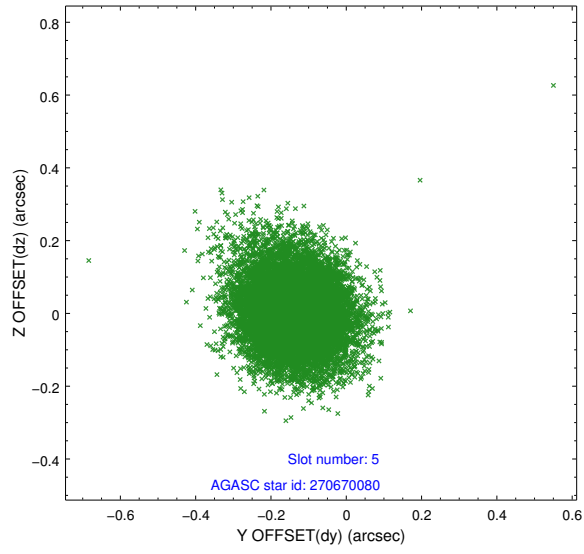


## 2.4.2 Slot 4

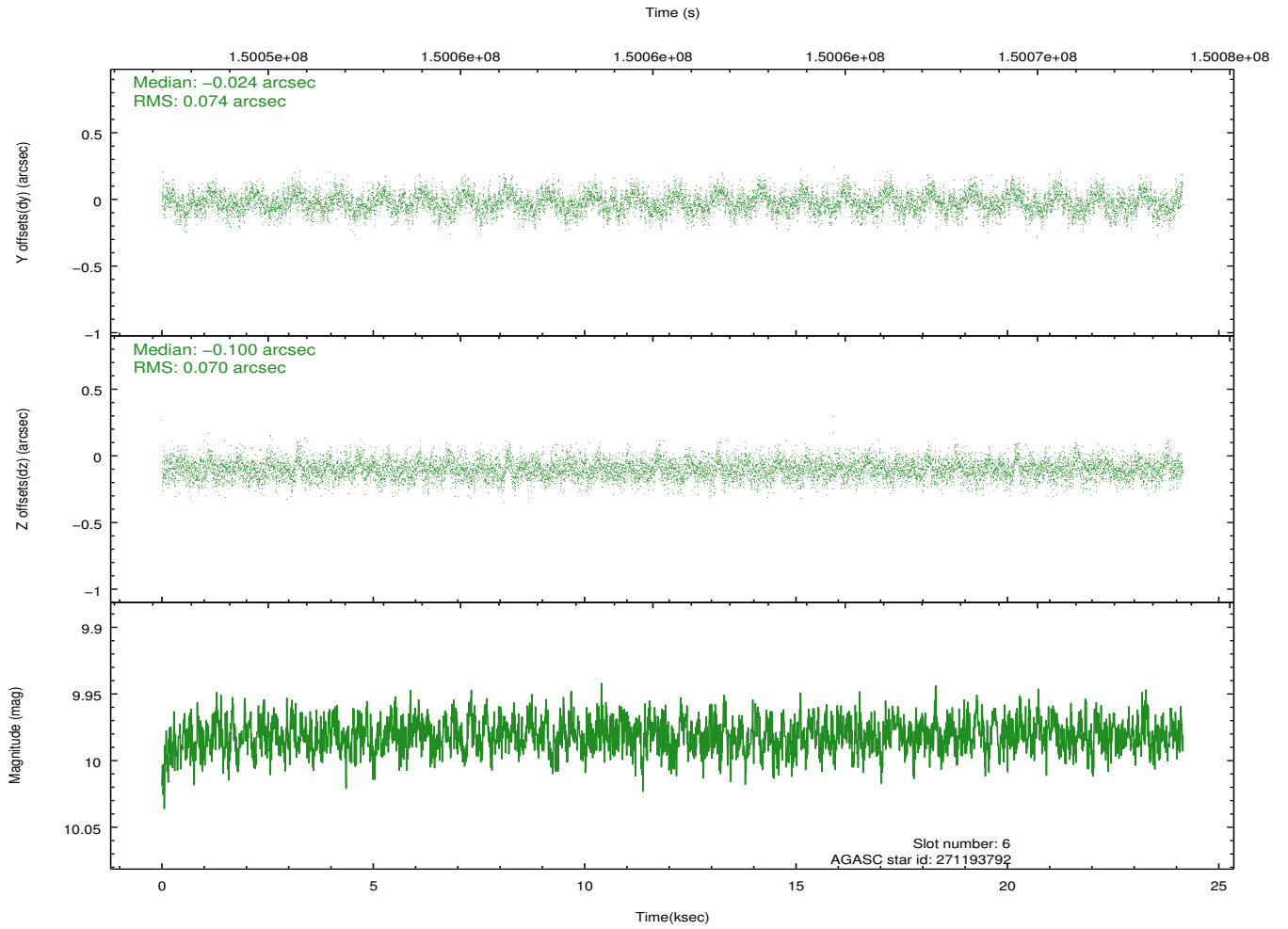
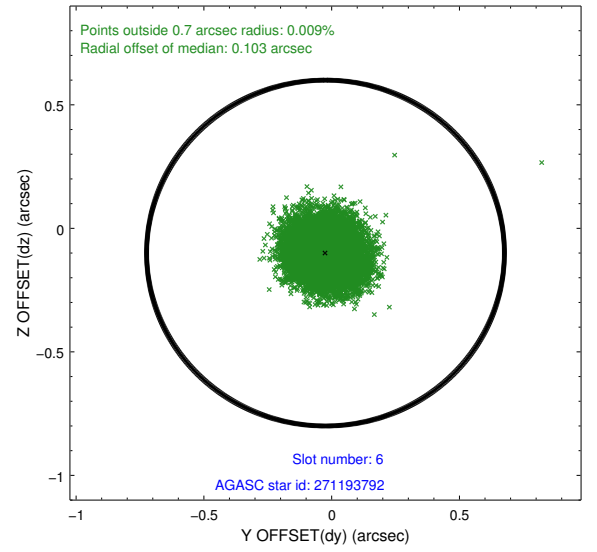
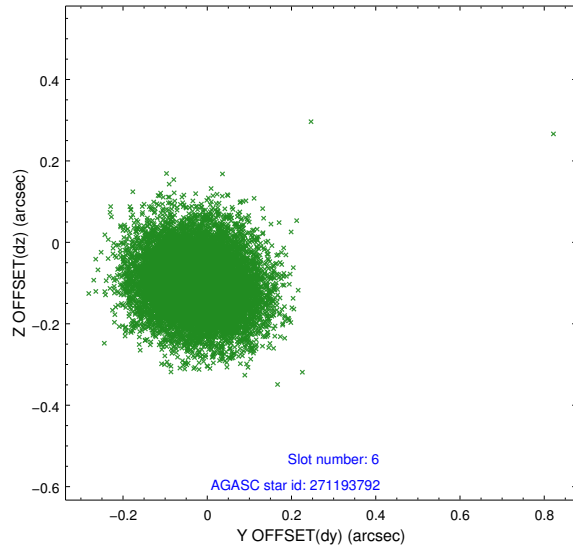




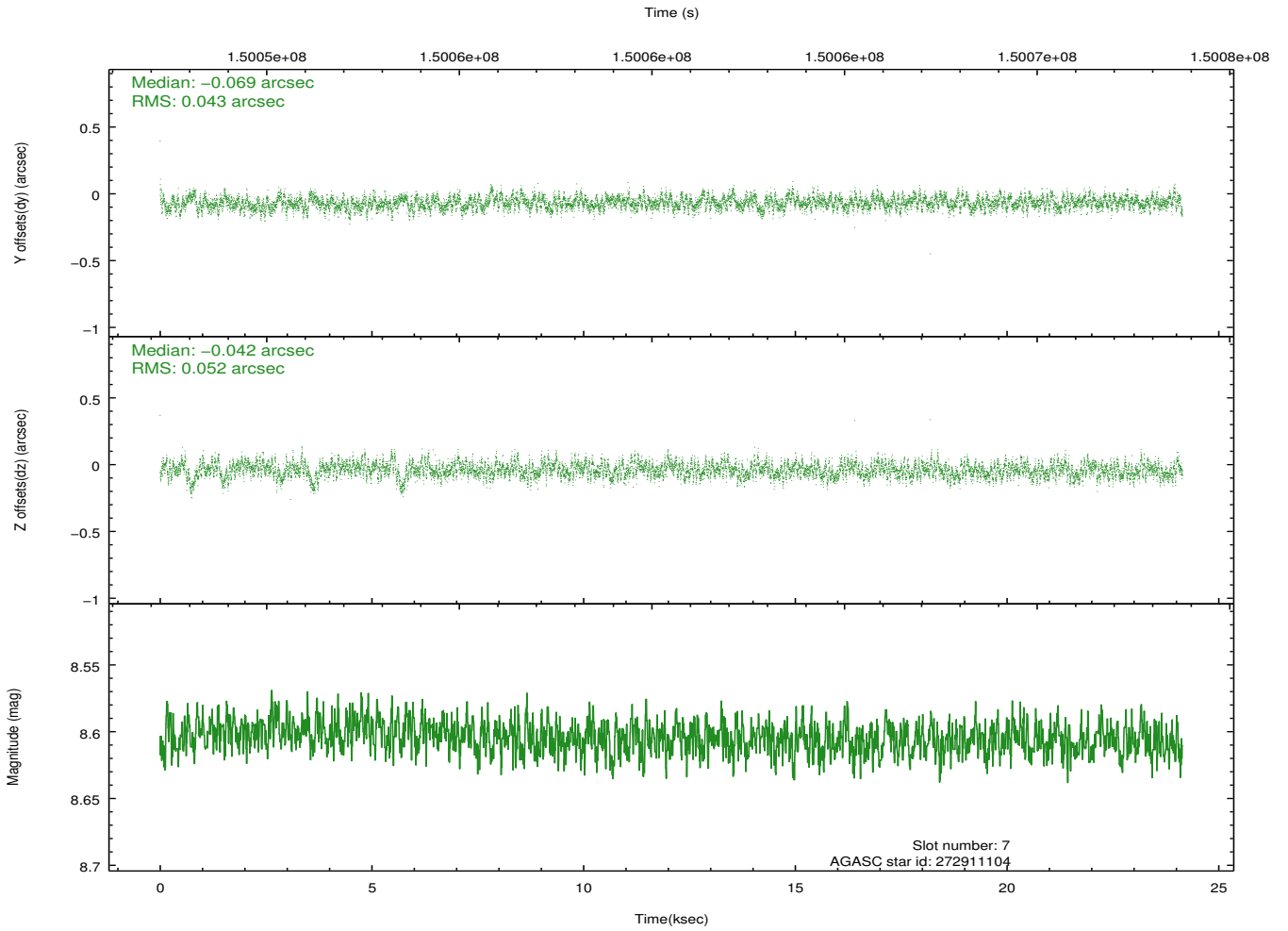
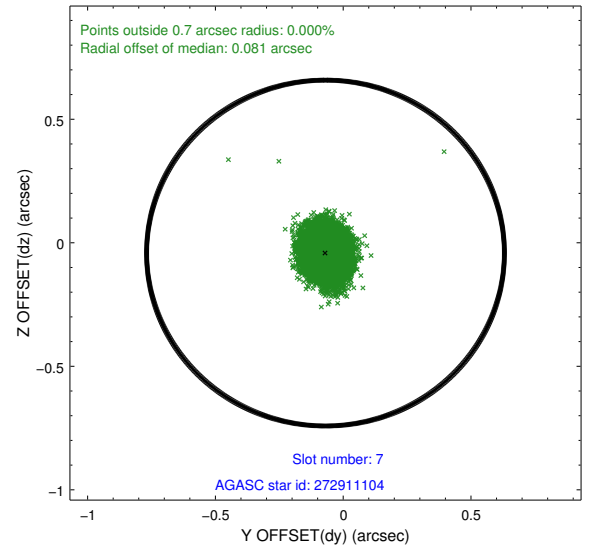
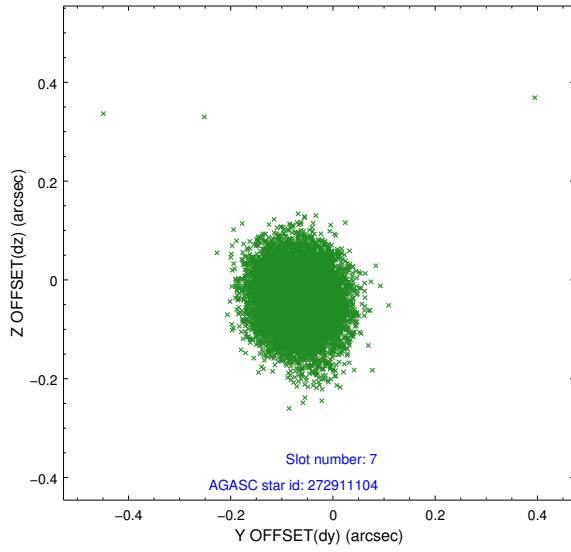
### 2.4.3 Slot 5



## 2.4.4 Slot 6

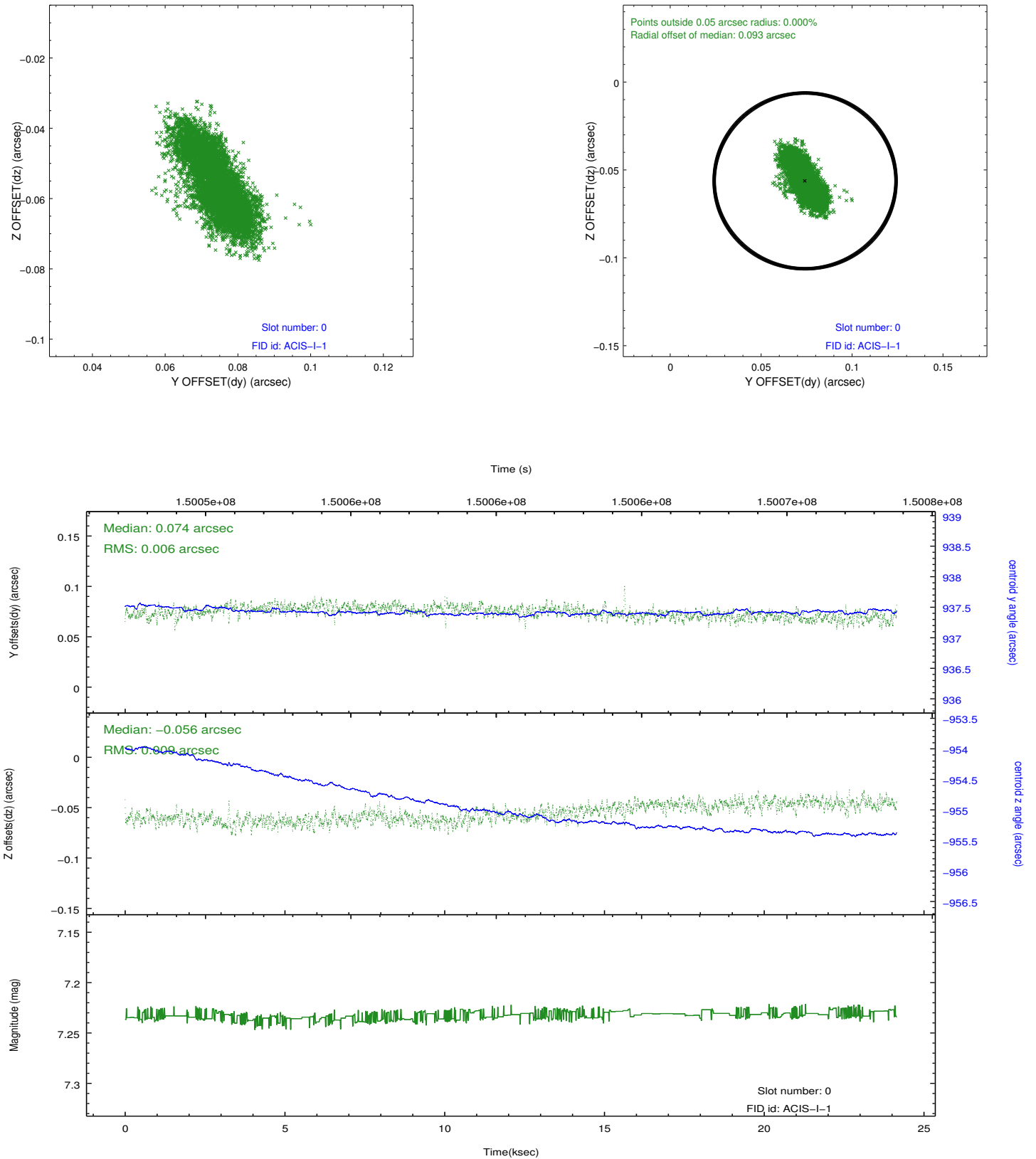


## 2.4.5 Slot 7

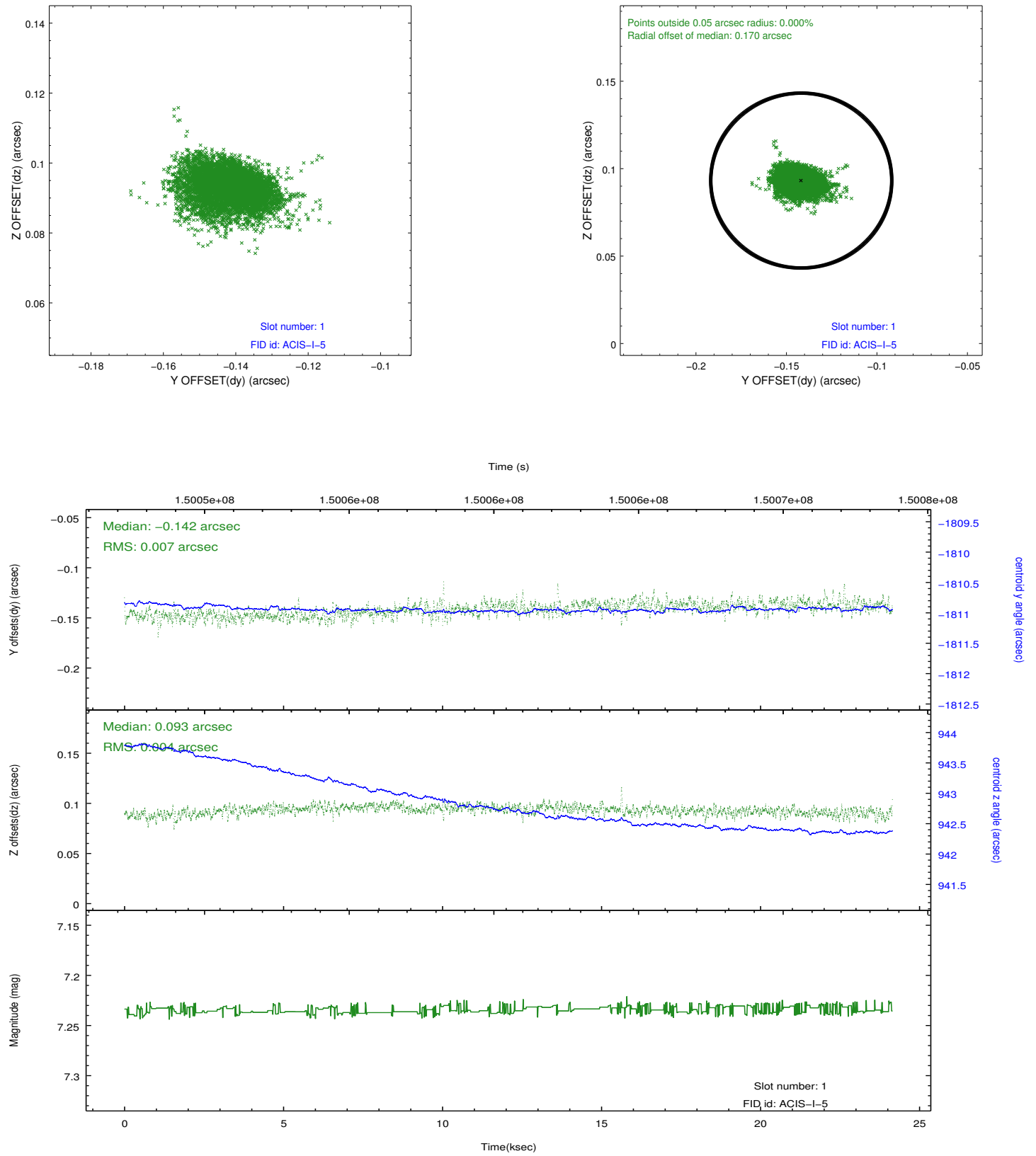


## 2.5 FID Slots

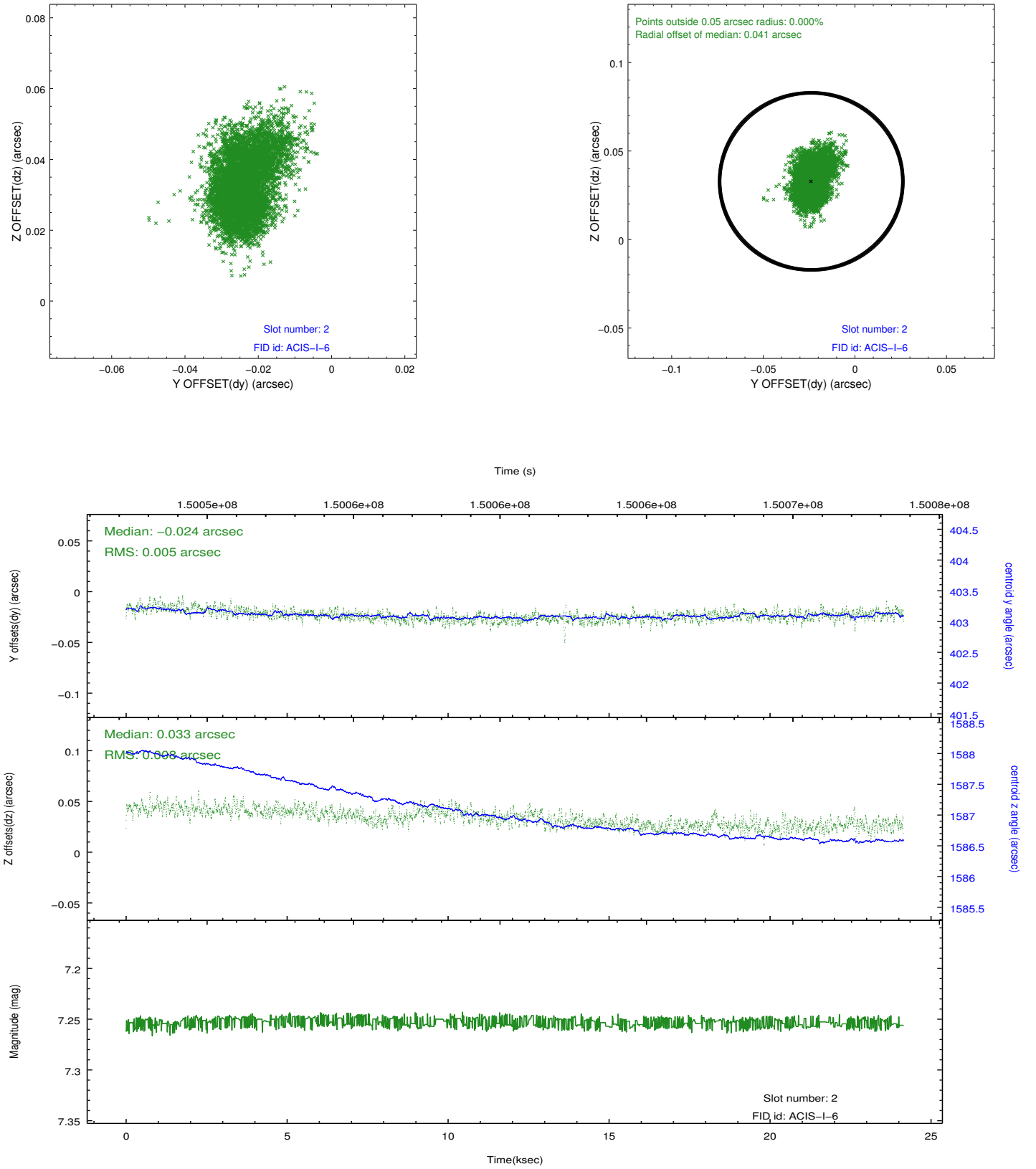
### 2.5.1 Slot 0



## 2.5.2 Slot 1



### 2.5.3 Slot 2



## **A Summary**

### **A.1 Status**

V&V Scientist	Jen Lauer
V&V Date (YYYY-MM-DD)	2012.10.25
V&V Edition	1
V&V Disposition and Status	OK
V&V Charge Time	24.133

### **A.2 Comments**