

V&V Reference Report

L2 ASCDS Version : 7.6.9

Observation 3044 - L2 Version 001
Chandra X-Ray Center

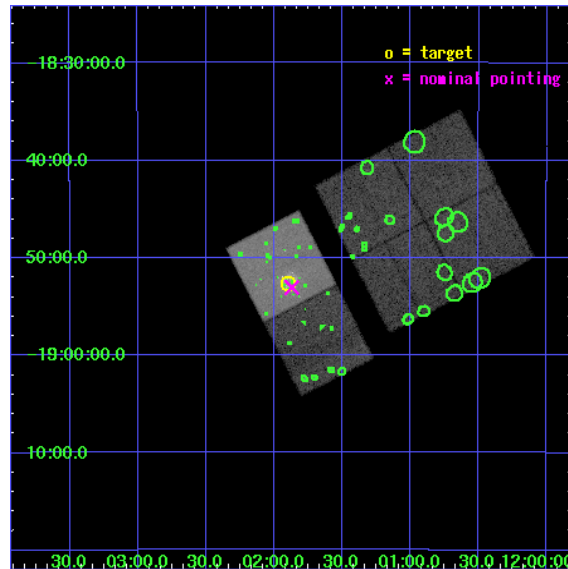
L2 Processing Date : Sep 22 2006

Contents

1	Front	2
2	OBI	3
2.1	OBI	3
2.1.1	Images	3
2.1.2	Bias	3
2.1.3	Parameters	4
2.1.4	Events	4
2.2	Compared Parameters	5
2.3	Aspect	6
2.4	Star Slots	9
2.4.1	Slot 3	9
2.4.2	Slot 4	10
2.4.3	Slot 5	11
2.4.4	Slot 6	12
2.4.5	Slot 7	13
2.5	FID Slots	14
2.5.1	Slot 0	14
2.5.2	Slot 1	15
2.5.3	Slot 2	16
3	Point Sources	17
A	Summary	18
A.1	Status	18
A.2	Comments	18

1 Front

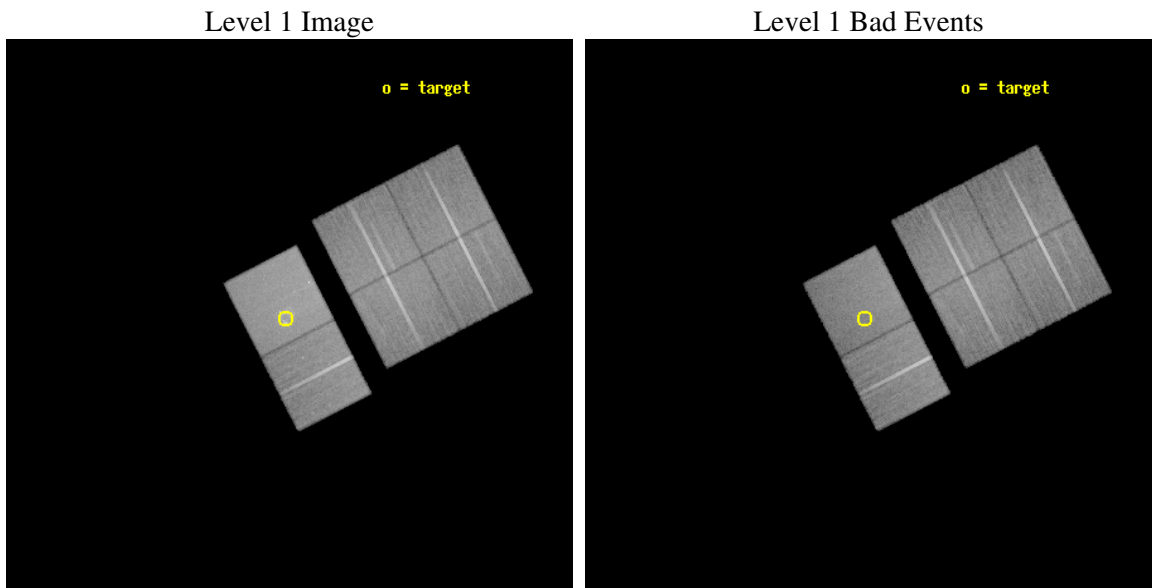
seq_num	700483
obs_id	3044
title	AN IN-DEPTH STUDY OF THE X-RAY SOURCE POPULATION AND HOT ISM OF THE ANTENNAE GALAXIES
observer	Dr Giuseppina Fabbiano
object	NGC 4038/NGC 4039
dtcycle	0
cycle	P
ra_targ	180.47375
dec_targ	-18.876528
ra_nom	180.46752523927
dec_nom	-18.884239555539
roll_nom	242.82461389181
revision	2
ontime	36963.199862301
livetime	36495.149569078
ontime0	36963.199862301
ontime1	36963.199862301
ontime2	36963.199862301
ontime3	36963.199862301
ontime6	36963.199862301
ontime7	36963.199862301
l2events	258246



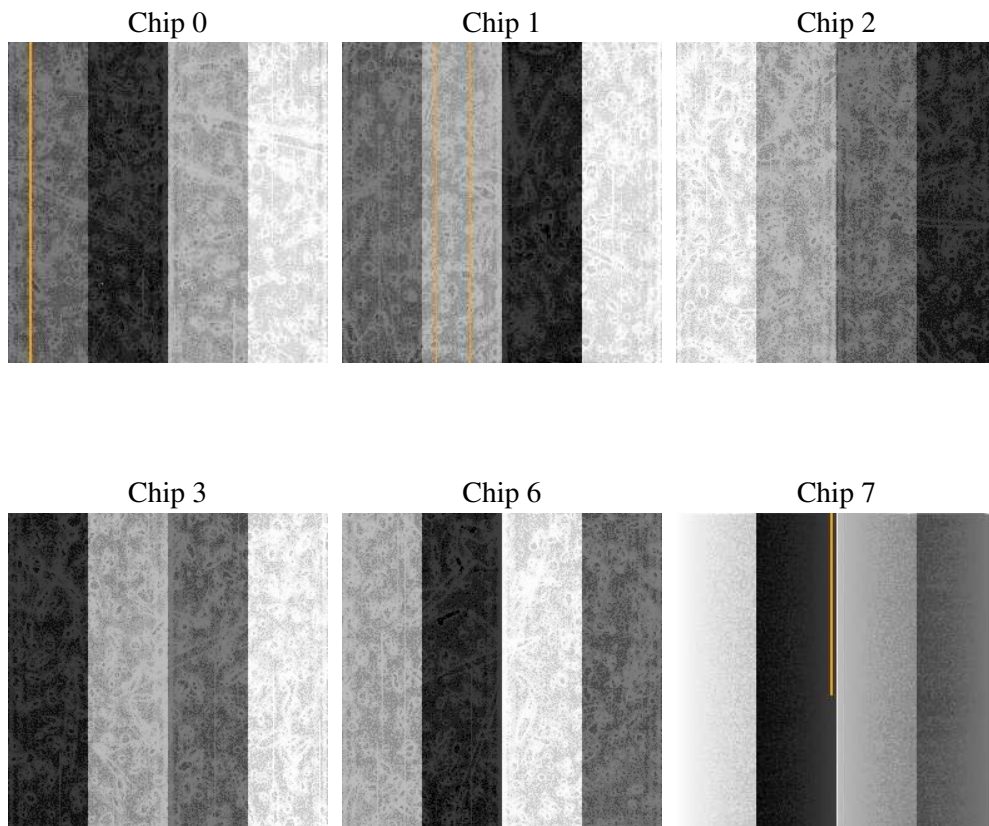
2 OBI

2.1 OBI

2.1.1 Images



2.1.2 Bias



2.1.3 Parameters

obi_num	0
ascdsver	7.6.9
caldbver	3.2.3
date	2006-09-22T20:37:08
revision	2

sched_exp_time	37000.000000
ontime	36966.841647565
ontime0	36966.841647565
ontime1	36966.841647565
ontime2	36966.841647565
ontime3	36966.841647565
ontime6	36966.841647565
ontime7	36966.841647565
l1events	1509423

2.1.4 Events

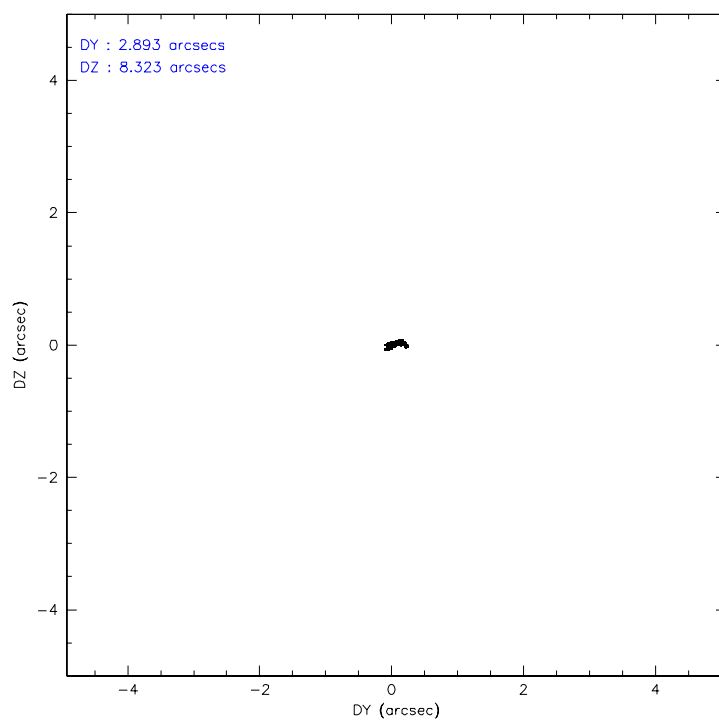
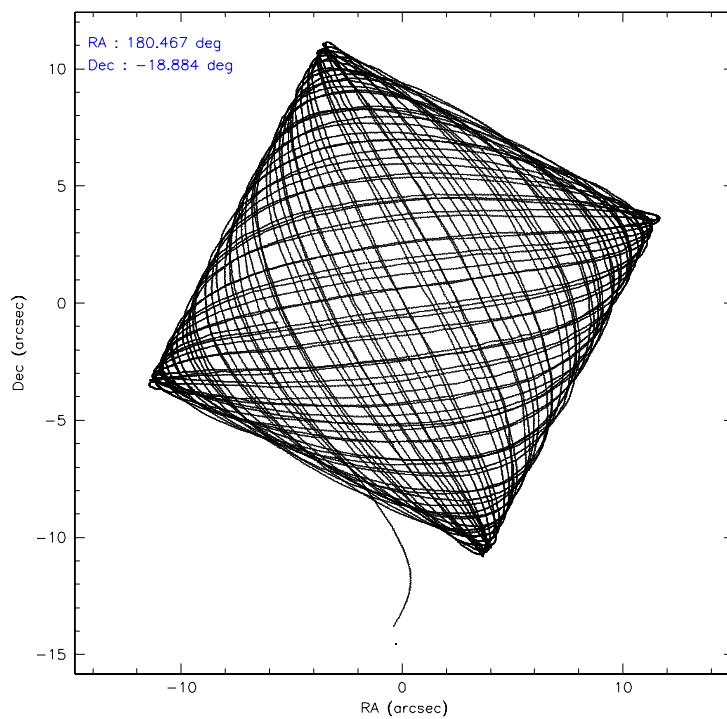
	ccd 0	ccd 1	ccd 2	ccd 3	ccd 6	ccd 7
level 1 events	230418	217028	242312	239888	248179	331598
rejected events	201344	187674	213862	211523	218886	194607
rejected %	87%	86%	88%	88%	88%	58%

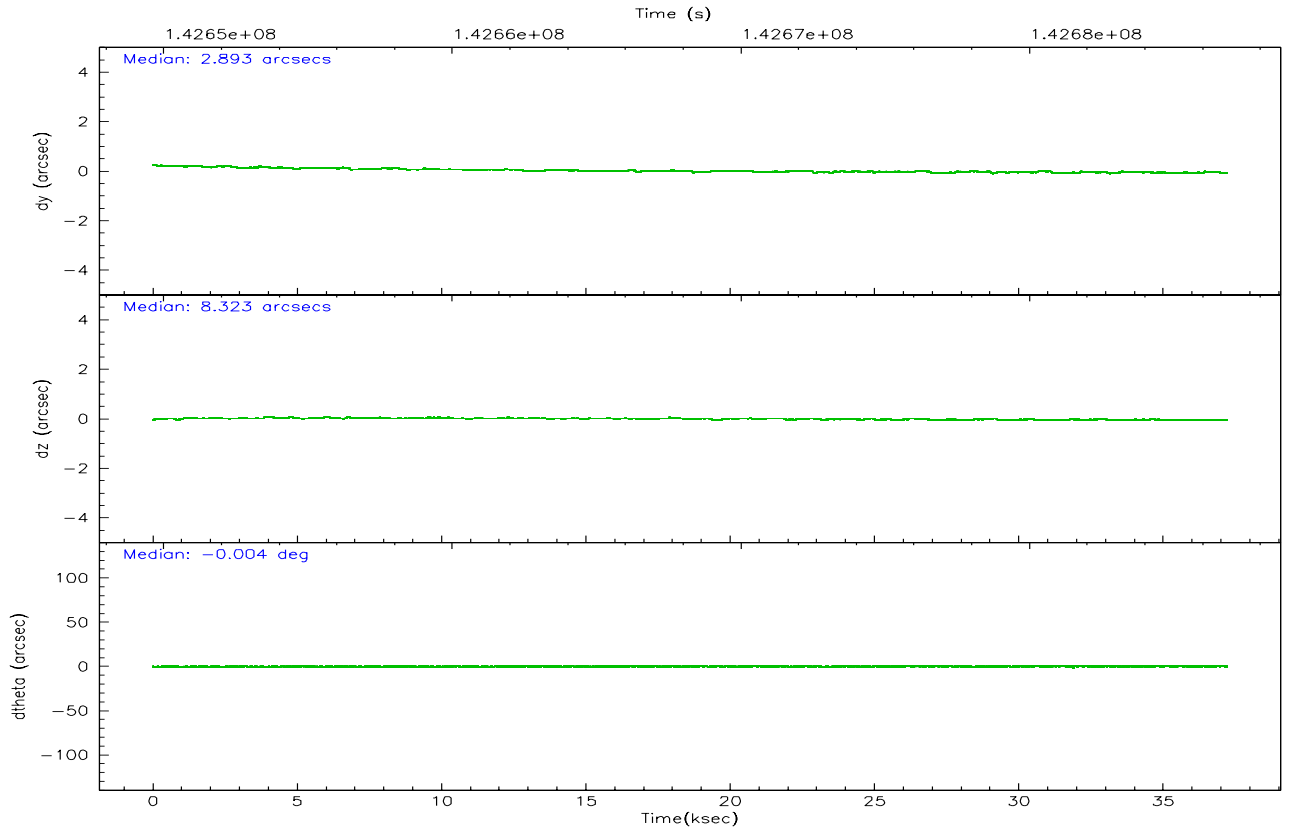
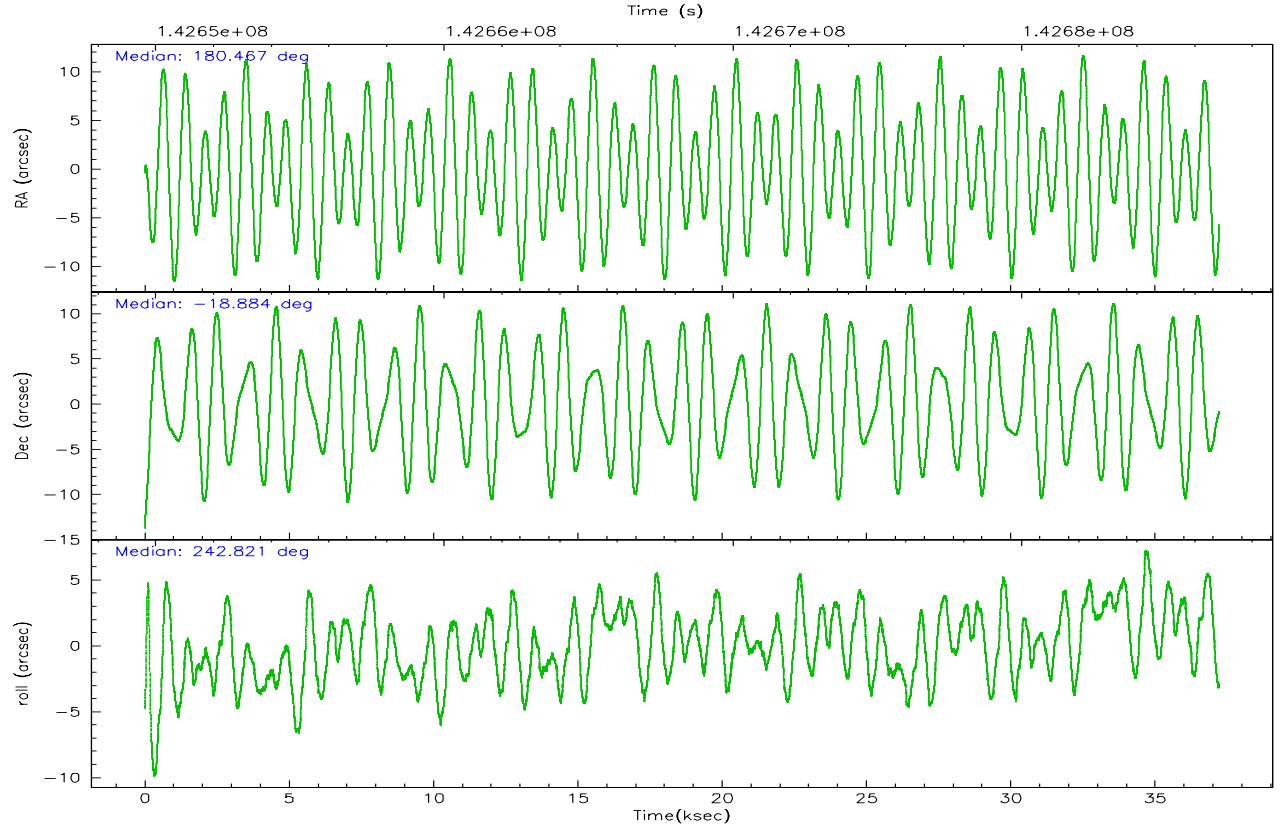
	ccd 0	ccd 1	ccd 2	ccd 3	ccd 6	ccd 7
grade 0 events	12005	11749	12111	12104	11822	12092
	5%	5%	4%	5%	4%	3%
grade 1 events	140	97	118	107	127	208
	0%	0%	0%	0%	0%	0%
grade 2 events	6359	6033	6320	5697	6022	34246
	2%	2%	2%	2%	2%	10%
grade 3 events	2839	3003	2631	2756	2895	8189
	1%	1%	1%	1%	1%	2%
grade 4 events	2614	2987	2587	2694	2718	7993
	1%	1%	1%	1%	1%	2%
grade 5 events	9404	9709	8406	10084	10719	21754
	4%	4%	3%	4%	4%	6%
grade 6 events	5267	5584	4803	5119	5846	74491
	2%	2%	1%	2%	2%	22%
grade 7 events	191790	177866	205336	201327	208030	172625
	83%	81%	84%	83%	83%	52%

2.2 Compared Parameters

Parameter	Planned	Actual	Parameter	Planned	Actual
Instrument	ACIS	ACIS	Obspar format version number	6	6
Detector	ACIS-012367	ACIS-012367	Obspar file type	PREDICTED	ACTUAL
Grating	NONE	NONE	Obspar update status	NONE	UPDATED
Data mode	FAINT	FAINT	Number of optional ACIS chips dropped	0	0
Observation mode	POINTING	POINTING	On-chip summing requested	N	N
Pointing RA	180.465752	180.4675252392702	Subarray requested	NONE	NONE
Pointing Dec	-18.857054	-18.88423955553887	Alternating exposures requested	N	N
Pointing Roll	242.667408	242.8246138918095	Primary exposure time	0.000000	3.2
SIM focus pos (mm)	-0.684267	-0.6828225247311905			
SIM defocus (mm)	0	0.001444936568705701			
SIM translation stage pos (mm)	-190.132523	-190.1425803651734			
SIM translation stage offset (mm)	0	0.01005778216563158			
Observation start time	142649852.184000	142648881.05347			
Observation start date	2002-07-10T00:56:28	2002-07-10T00:41:21			
Observation end time	142686852.184000	142687662.95506			
Observation end date	2002-07-10T11:13:08	2002-07-10T11:27:42			
Read mode	TIMED	TIMED			

2.3 Aspect



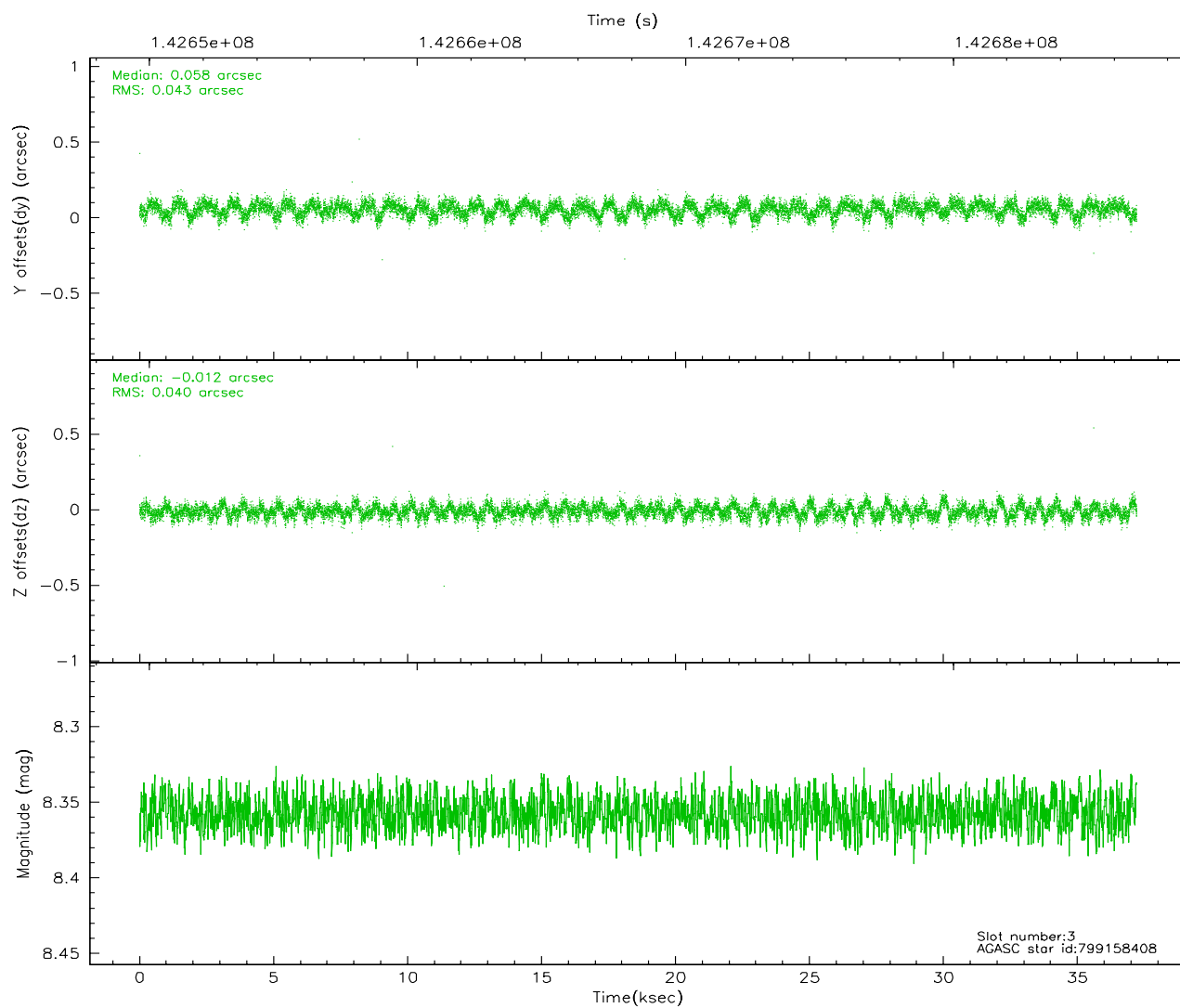
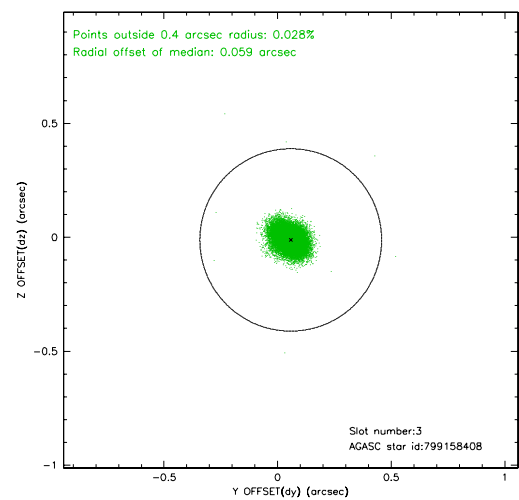
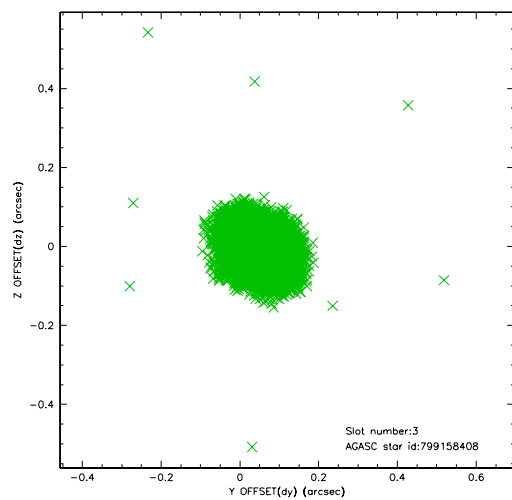


Slot Statistics

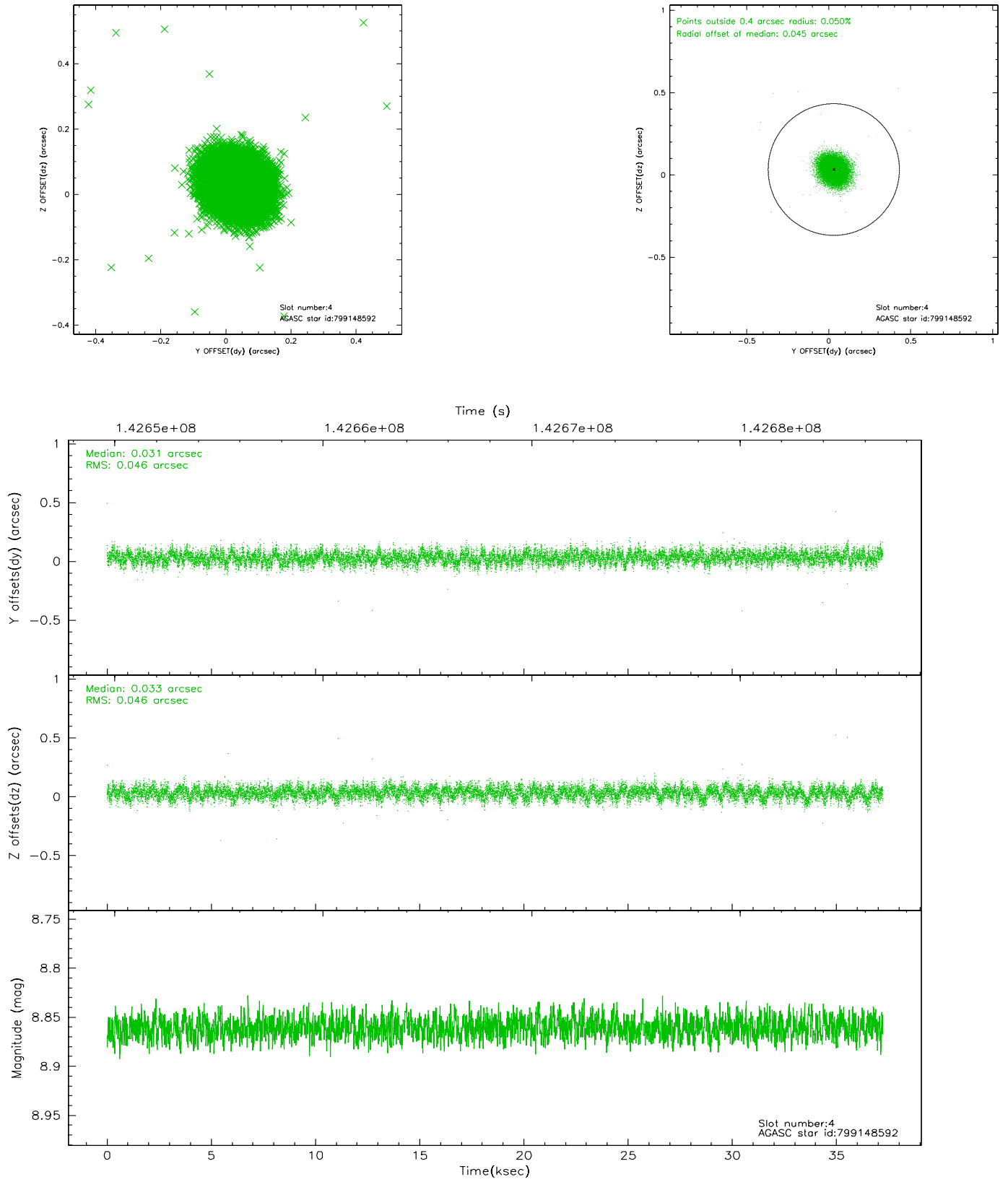
slot	status	id	mag	n_pts	med_dy	med_dz	dr1	dr2	ra	dec	mean_y	mean_z
0	FID	ACIS-S-2	7.11	9076	0.003	0.017	0.006	0.010	0.000000	0.000000	-755.57	-1729.45
1	FID	ACIS-S-4	7.20	9075	-0.060	-0.006	0.006	0.012	0.000000	0.000000	2157.65	178.96
2	FID	ACIS-S-5	7.24	9076	0.026	-0.002	0.008	0.013	0.000000	0.000000	-1808.34	172.70
3	GUIDE	799158408	8.36	18147	0.058	-0.012	0.062	0.099	180.413548	-19.338934	1622.73	639.88
4	GUIDE	799148592	8.86	18148	0.031	0.033	0.068	0.111	180.422651	-18.791183	-142.94	-238.68
5	GUIDE	799156912	9.57	18142	0.149	0.265	0.098	0.158	180.669836	-19.643386	2197.69	1915.99
6	GUIDE	799149552	9.62	18137	-0.089	-0.091	0.112	0.181	179.918855	-18.889841	963.04	-1598.45
7	GUIDE	799152736	9.10	18143	-0.141	-0.196	0.091	0.144	180.259335	-18.516494	-765.10	-1188.27

2.4 Star Slots

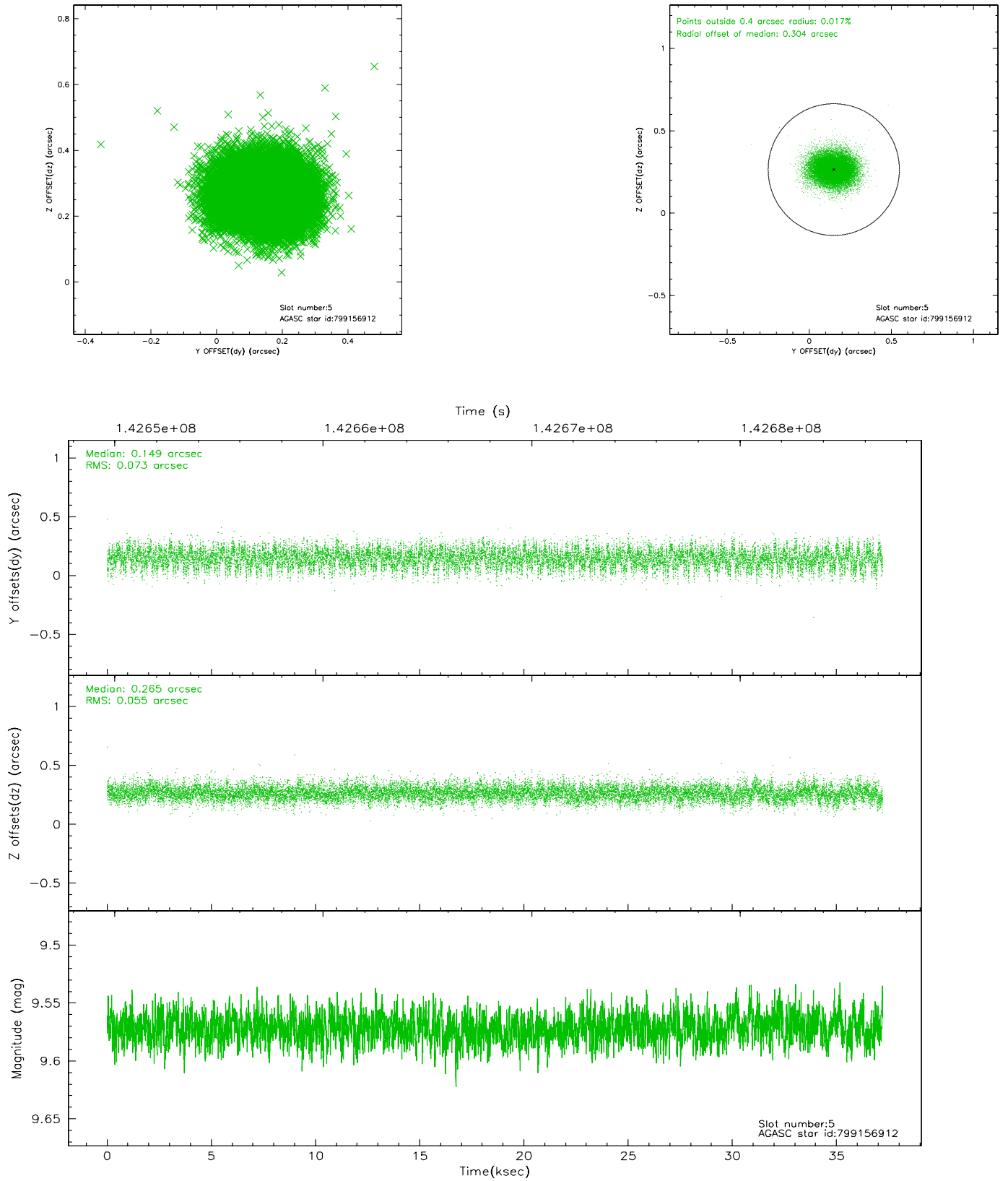
2.4.1 Slot 3



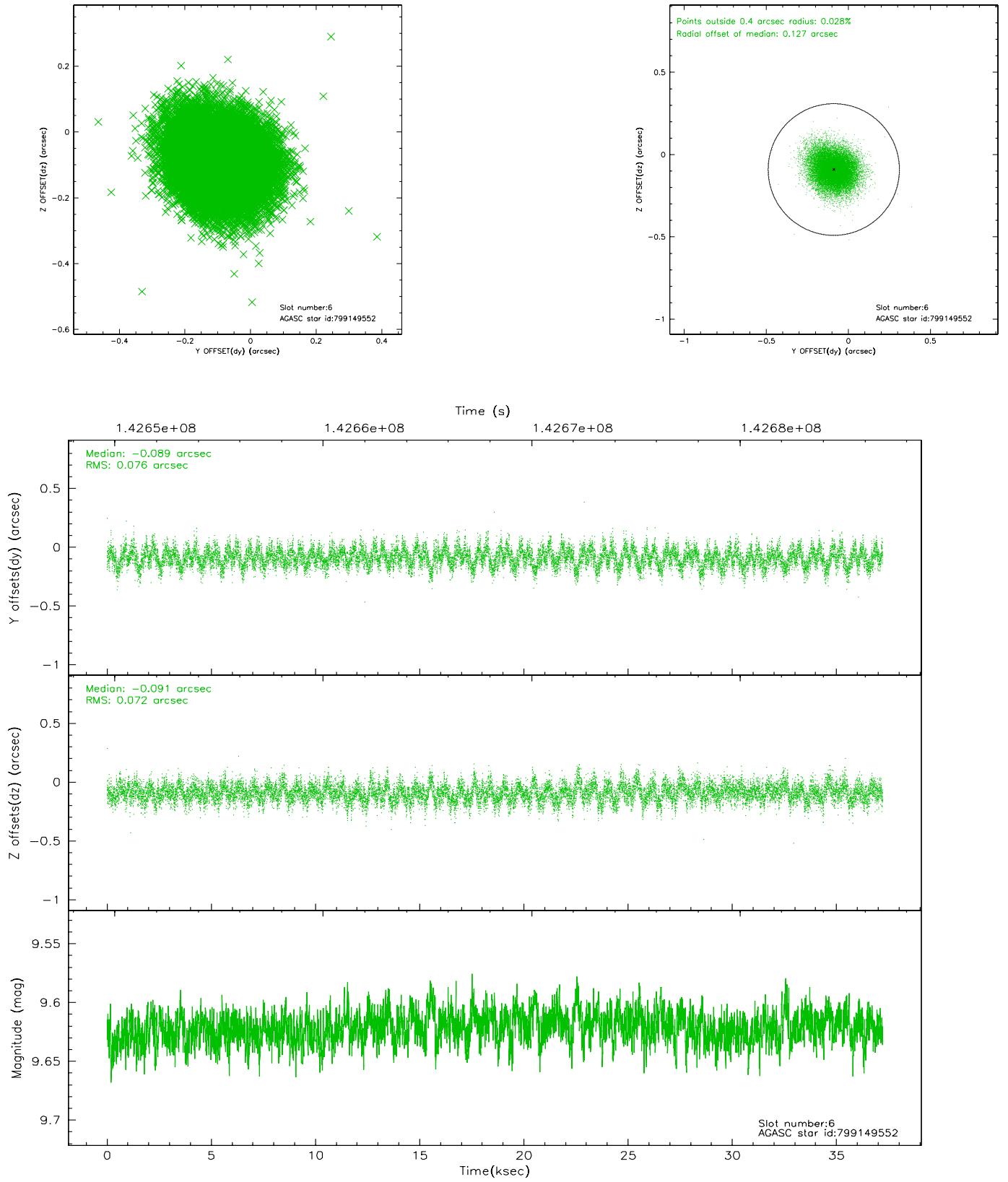
2.4.2 Slot 4



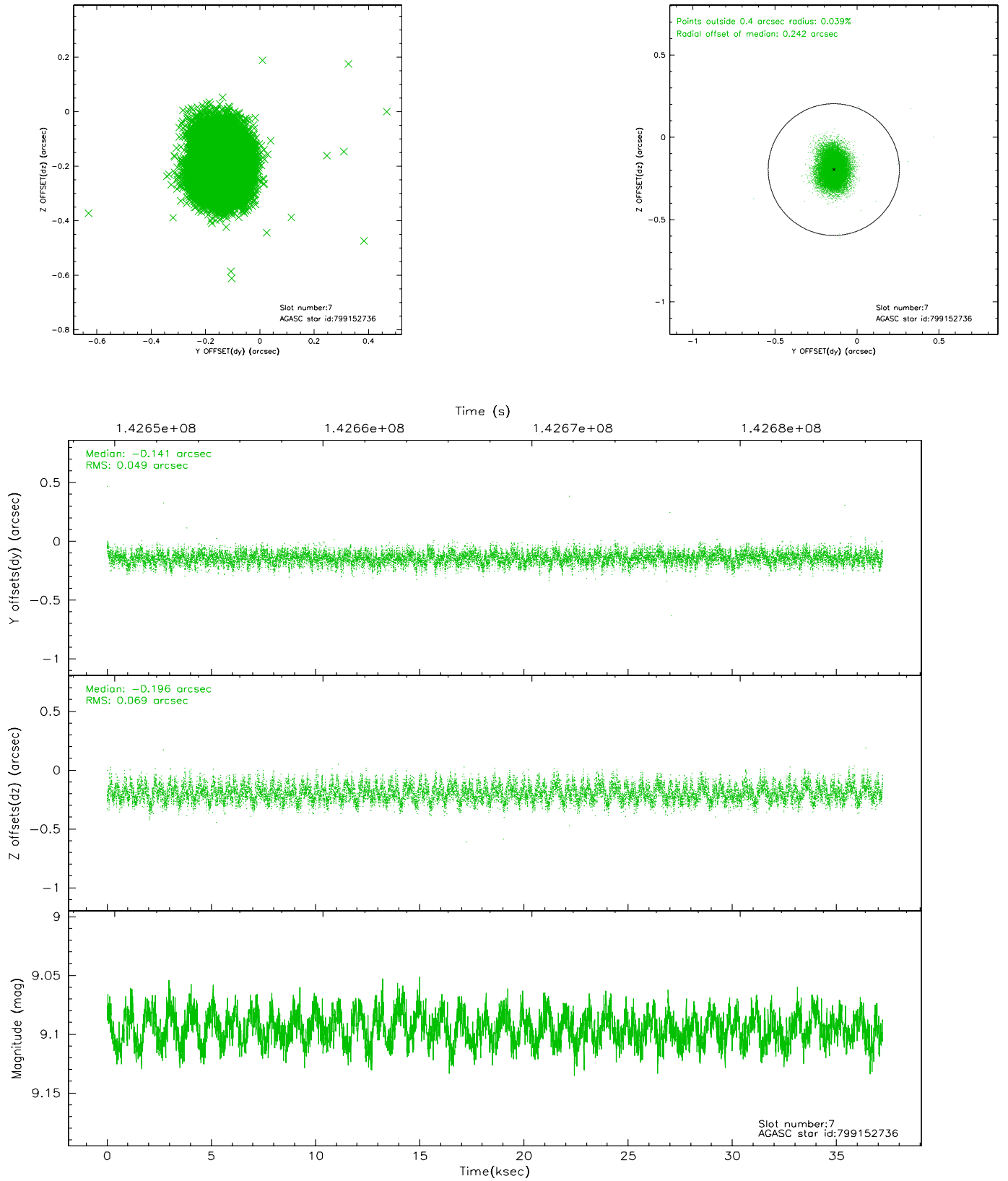
2.4.3 Slot 5



2.4.4 Slot 6

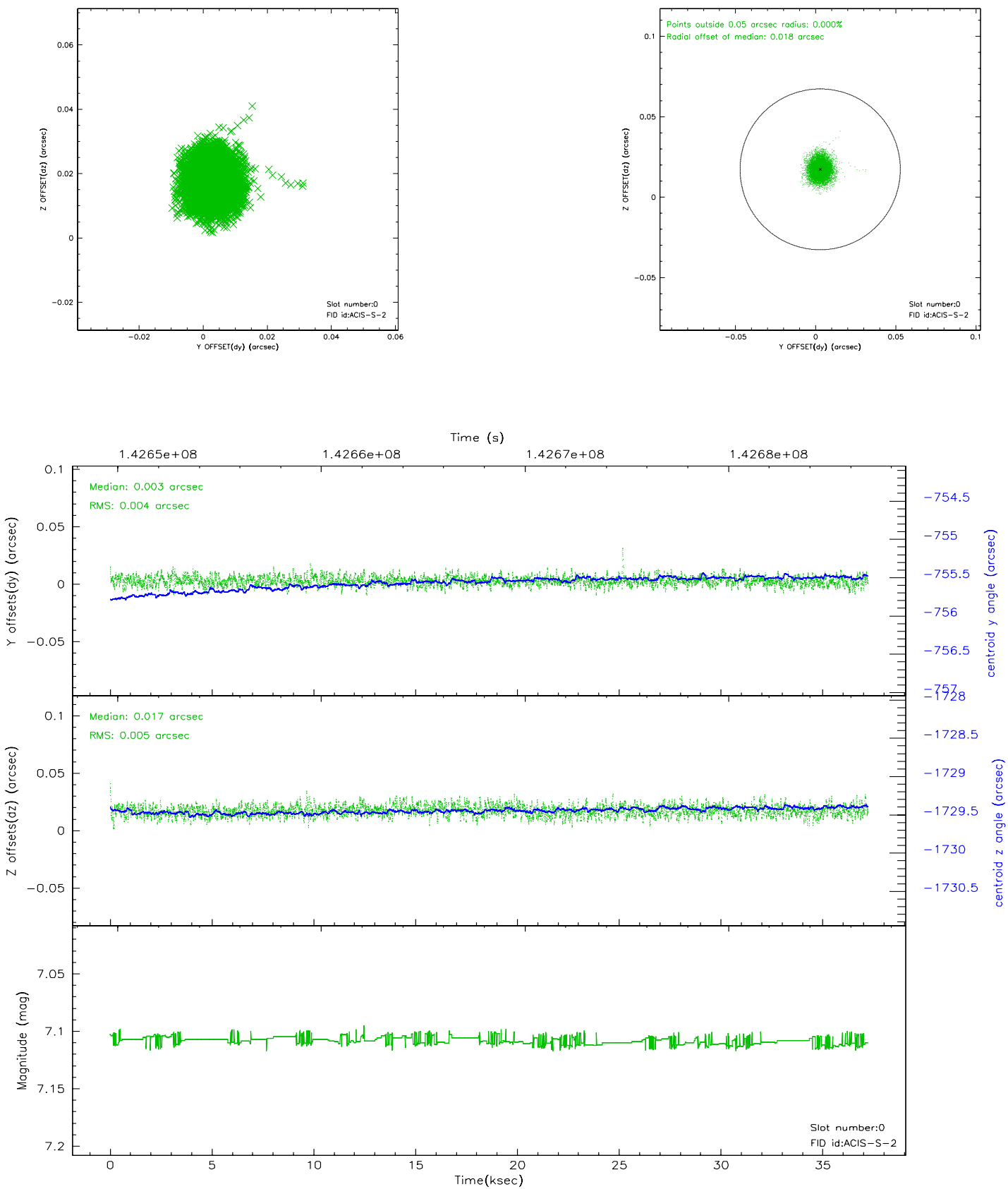


2.4.5 Slot 7

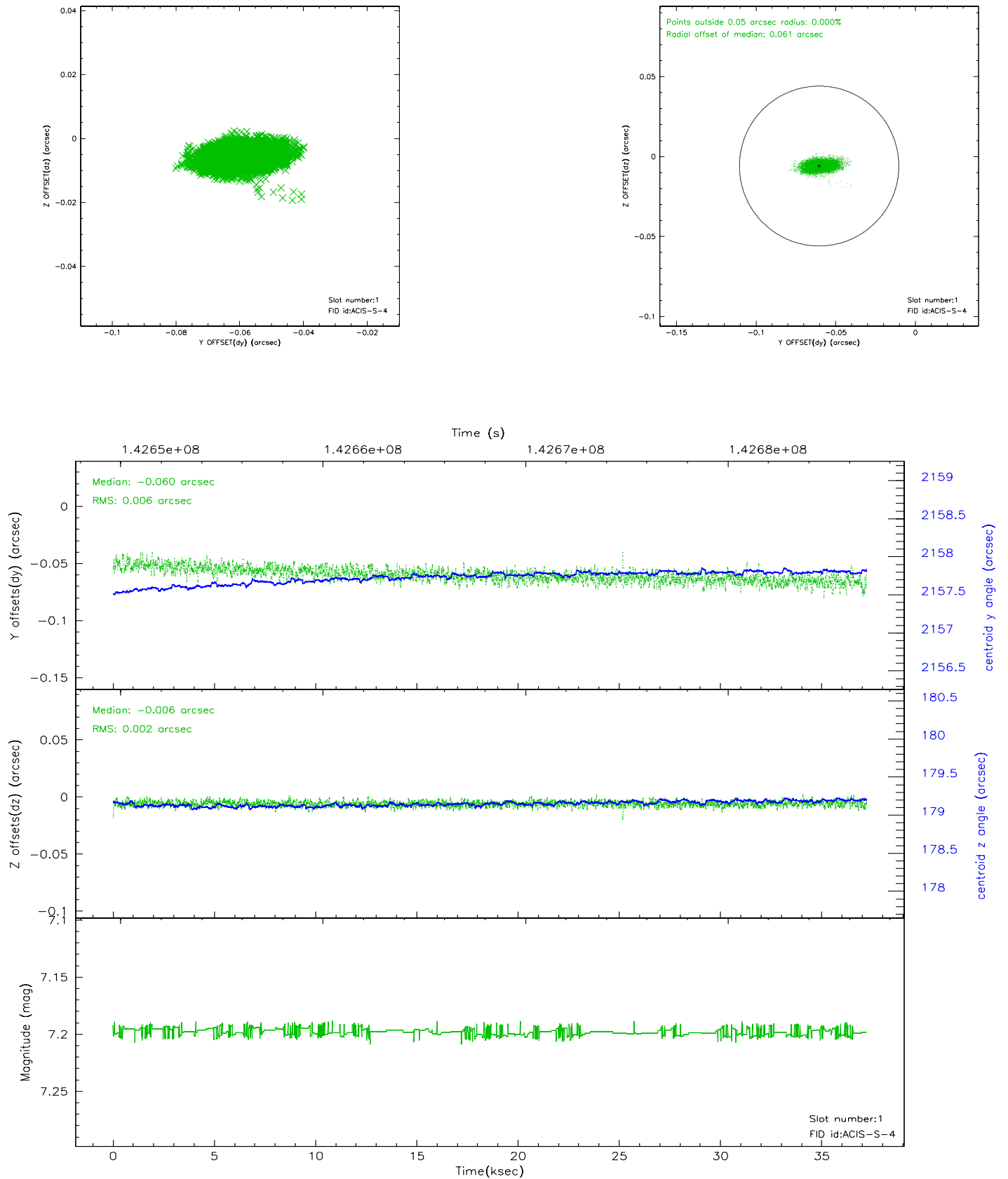


2.5 FID Slots

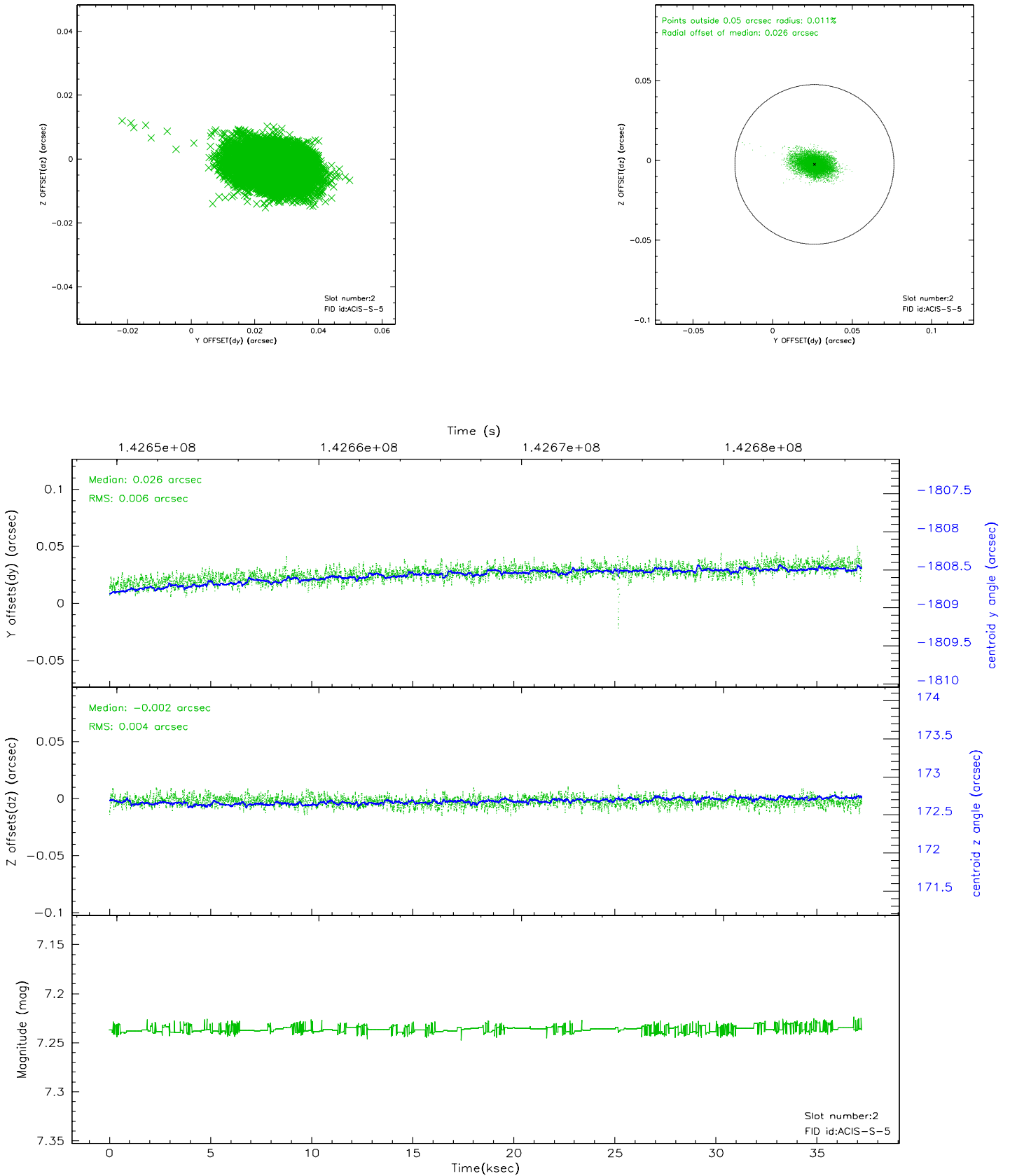
2.5.1 Slot 0



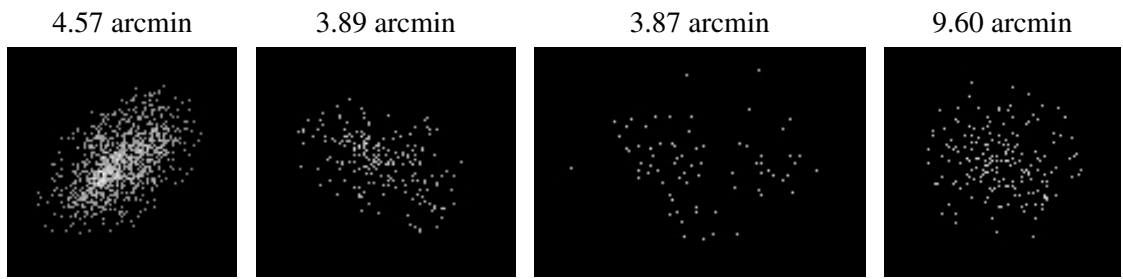
2.5.2 Slot 1



2.5.3 Slot 2



3 Point Sources



A Summary

A.1 Status

V&V Scientist	Beth Sundheim
V&V Date (YYYY-MM-DD)	2006.09.24
V&V Edition	1
V&V Disposition and Status	OK
V&V Charge Time	36.966

A.2 Comments